



31D16NW0056 47 MONMOUTH

Diamond Drill

010

Township of MONMOUTH

Report NO 47

Work performed by: Imperial Oil Limited

Claim NO	Hole NO	Footage	Date	Note
EO 401981	9	87.0	Aug/78	(1)
	10	101.0	Aug/78	(1)
EO 401980	11	266.0	Aug/78	(2)
	12	127.0	Aug/78	(2)
	13	100.0	Sept/78	(2)
	14	101.0	Sept/78	(2)
	15	100.0	Sept/78	(2)
	16	100.0	Sept/78	(2)

Notes:

(1) #83-78

(2) From cancelled claims

IMPERIAL OIL LIMITED - DIAMOND DRILL HOLE LOG

#83

PROPERTY M^cCUE LAKE

LOCATION CLAIM 401981, CONC. X LOT 11
MONMOUTH TWP., ONT.

NTS CODE 31D-16F

HOLE NO. 9

LATITUDE AZIMUTH 340° PURPOSE TEST SKARN

DEPARTURE DIP -45° STARTED AUG. 9, '78

ELEVATION CORE BQ COMPLETED AUG. 11, '78

SECTION LOGGED BY S. WATTERS

REF. GRID 13+00E...7+00S

FINAL DEPTH: 87 ft.

DIP TESTS

TEST	FOOTAGE			DIP		LATITUDE		DEPARTURE	
	FROM	TO	TOTAL		CORR.		CUM.		CUM.

August 21, '78

Sheila Watters

FOOTAGE		DESCRIPTION	CORE SAMPLES							
FROM	TO		NO.	FROM	TO	WIDTH				AVERAGES
0	7.3	OVERBURDEN								
7.3	20.1	medium grained light grey quartz feldspar hornblende biotite GRANULITE foliation at 50° to CA. several limonite-stained fractures both parallel to and cross-cutting foliation core breaks in .1-1.1 ft. lengths								
20.1	21.2	coarse calcite and phlogopite cutting across foliation of granulite (vein?) RA. 20.1-20.9—5000 cpm								

radiometric readings using McPhar TV-1 scintillometer measuring total counts

SSW

FOOTAGE		DESCRIPTION	CORE SAMPLES								
FROM	TO		NO.	FROM	TO	WIDTH				AVERAGES	
21.2	23.2	medium grained light grey quartz feldspar hornblende biotite GRANULITE									
23.2	28.4	coarse calcite, phlogopite, diopside and minor apatite (?), bottom 1.5 ft. is almost wholly diopside R.A. 23.2 - 23.8 — 6000 cpm 24.5 - 25.4 — 4000 cpm 26.6 - 26.7 — 6000 cpm 27.2 - 27.6 — 4000 cpm									
28.4	29.8	fine to medium grained light grey quartz feldspar biotite hornblende GRANULITE, minor pyrite along fractures cross-									

SEW

FOOTAGE		DESCRIPTION	CORE SAMPLES							
FROM	TO		NO.	FROM	TO	WIDTH				AVERAGES
		cutting foliation								
29.8	64.6	<p>fine to very coarse grained grey QUARTZITE with diopside-rich sections 40.9 - 44.0' and 45.4 - 47.6 ft. - abundant diopside, core breaks in .05 - 1.8 ft. lengths R.A. 40.9 - 41.2 — 4000 cpm 41.4 - 41.7 — 4000 cpm 41.7 - 42.0 — 5000 cpm 42.3 - 43.2 — 5000 cpm 43.2 - 43.4 — 7000 cpm 43.4 - 43.9 — 5000 cpm 46.4 - 46.6 — 7000 cpm 46.6 - 46.8 — 5000 cpm</p>								

SEW

FOOTAGE		DESCRIPTION	CORE SAMPLES							
FROM	TO		NO.	FROM	TO	WIDTH				AVERAGES
64.6	66.8	coarse diopside and actinolite, minor calcite								
66.8	81.2	medium grained light grey calc-silicate MARBLE with phlogopite wollastonite, actinolite and minor diopside, pyrite and pyrrhotite(?) core breaks in .1 to 1.5 ft. lengths R.A. 67.4 - 67.9 — 4000 cpm 67.9 - 68.1 — 5000 68.1 - 68.3 — 6000 68.3 - 68.7 — 5000 68.7 - 69.0 — 4000 69.0 - 69.3 — 6000 69.3 - 70.1 — 4000 70.2 - 70.8 — 5000								

SEW

FOOTAGE		DESCRIPTION	CORE SAMPLES							
FROM	TO		NO.	FROM	TO	WIDTH				AVERAGES
		71.6 - 73.4 — 4000 cpm								
		73.4 - 75.8 — 5000 cpm								
		75.8 - 76.3 — 4000								
		76.3 - 76.8 — 5000								
		76.8 - 77.0 — 7000								
		77.0 - 77.3 — 6000								
		77.3 - 77.5 — 6500								
		77.5 - 79.1 — 5000								
		79.1 - 80.4 — 4000								
81.2	87.0	fine grained grey QUARTZITE with several hematite-stained fractures both along foliation and cross-cutting foliation at low angle to CA. cone breaks in .05-1.3 ft. lengths END of HOLE 87.0 ft.								

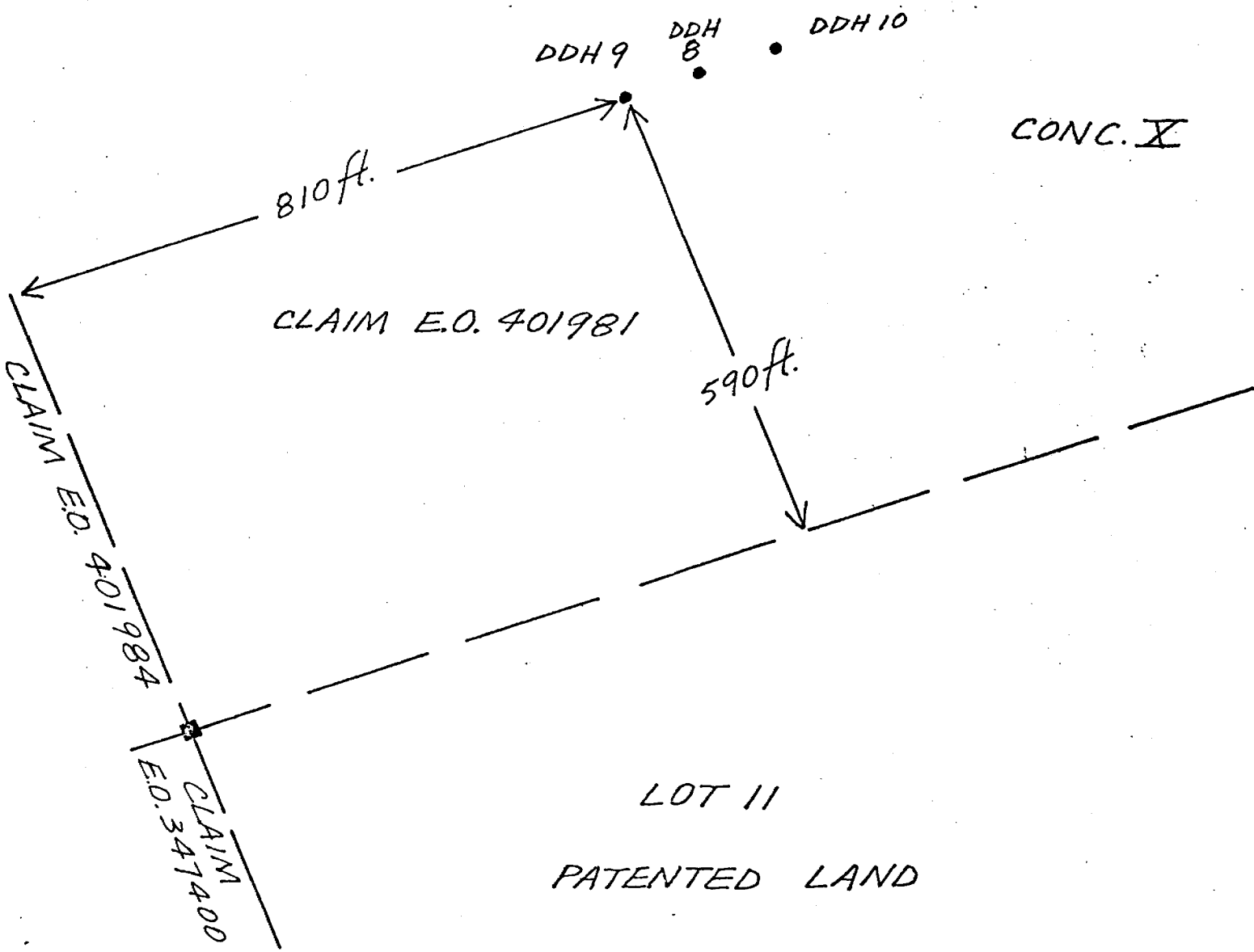
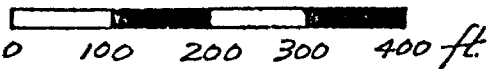
SEW.

MSB

ESSO MINERALS CANADA
a Div. of IMPERIAL OIL LIMITED
M^cCUE LAKE PROSPECT
MONMOUTH TOWNSHIP

DDH NO. 9

scale : 1 in. = 200 ft.



IMPERIAL OIL LIMITED - DIAMOND DRILL HOLE LOG

PROPERTY *MCCUE LAKE*.....

LOCATION *CLAIM 401981, CONC. 10 LOT 11
MONMOUTH TWP. ONTARIO*

NTS CODE *31D-16F*.....

HOLE NO. *10*.....

LATITUDE AZIMUTH *340°*.....

PURPOSE *TEST SKARN*

DEPARTURE DIP *45°*.....

STARTED *AUG. 12, '78*

ELEVATION CORE *BQ*.....

COMPLETED *AUG. 15, '78*

SECTION

LOGGED BY *J. WATTERS*

REF. GRID *15+00E 7+00S*

FINAL DEPTH: 101 ft.

DIP TESTS

TEST	FOOTAGE			DIP		LATITUDE		DEPARTURE	
	FROM	TO	TOTAL		CORR.		CUM.		CUM.

Sheila Watters August 21, '78

FOOTAGE		DESCRIPTION	CORE SAMPLES							
FROM	TO		NO.	FROM	TO	WIDTH				AVERAGES
0	8.0	OVERBURDEN								
8.0	24.4	medium grained grey quartz feldspar hornblende biotite GRANULITE imperfectly foliated at 70° to CA, minor sections (.1 to .2 ft.) of coarse phlogopite, calcite, and minor pyrite, 20000 cpm. in one of these sections several limonite-stained fractures cutting across foliation core breaks in .1-1 ft. lengths RA. 22.2-22.4 — 20000 cpm								total count radiometric readings using McPhar TV-1 (counts per minute)

SEM.

FOOTAGE		DESCRIPTION	CORE SAMPLES							
FROM	TO		NO.	FROM	TO	WIDTH				AVERAGES
24.4	26.1	coarse biotite and calcite with minor granulite R.A. 25.3 - 25.6 — 4000 cpm								
26.1	36.6	medium grained grey quartz feldspar hornblende biotite GRANULITE imperfectly foliated at 50° to CA. R.A. in zone of massive biotite core breaks in 2-1.4 ft. lengths R.A. 27.4 - 27.6 — 7000 cpm								
36.6	37.4	coarse phlogopite calcite and diopside								

FOOTAGE		DESCRIPTION	CORE SAMPLES							
FROM	TO		NO.	FROM	TO	WIDTH				AVERAGES
		RA. 36.6-36.8 — 4000 cpm 36.8-37.1 — 8000 37.1-37.4 — 5000								
37.4	42.5	medium grained grey quartz feldspar biotite hornblende GRANULITE fractures at 45° to CA. (across foliation) at 42 ft.								
42.5	44.1	coarse and medium grained diopside-rich SKARN RA. 42.5-42.7 — 4000 cpm 43.8-44.1 — 7000 cpm								
44.1	48.4	fine grained grey QUARTZITE with diopside- rich bands (RA in these								

SEW.

FOOTAGE		DESCRIPTION	CORE SAMPLES								
FROM	TO		NO.	FROM	TO	WIDTH				AVERAGES	
		sections.) R.A. 45.1 - 45.4 — 6000 cpm 45.4 - 45.5 — 4000 cpm									
48.4	51.4	coarse diopside, actinolite and calcite, cuts across foliation of quartzite core breaks in .05 to .8 ft. lengths									
51.4	73.6	medium to very coarse grained grey QUARTZITE with several small sections having abundant coarse diopside fractures at 45° to CA, core breaks in .05 to 2 ft. lengths R.A.									

SEU

FOOTAGE		DESCRIPTION	CORE SAMPLES							
FROM	TO		NO.	FROM	TO	WIDTH				AVERAGES
		R.A. 53.9-54.9 — 4000 cpm 55.4-55.6 — 5000 cpm								
73.6	86.8	medium grained light grey and buff SKARN with tremolite, phlogopite, actinolite, talc and calcite tiny uraninite (?) crystals in skarn at R.A. of 20000. several small sections of massive phlogopite and of diopside .5 ft. section of quartzite at 84.5 ft. core breaks in .1 to 1.2 ft. lengths R.A. 76.8-77.0 — 6000 cpm 77.0-77.4 — 20000								

DEW

FOOTAGE		DESCRIPTION	CORE SAMPLES							
FROM	TO		NO.	FROM	TO	WIDTH				AVERAGES
86.8	101.0	<p>medium grained light grey QUARTZITE with diopside(?) and minor magnetite or pyrrhotite core breaks in .1 to 1.4 ft. lengths</p> <p>END of HOLE 101.0 ft.</p>								

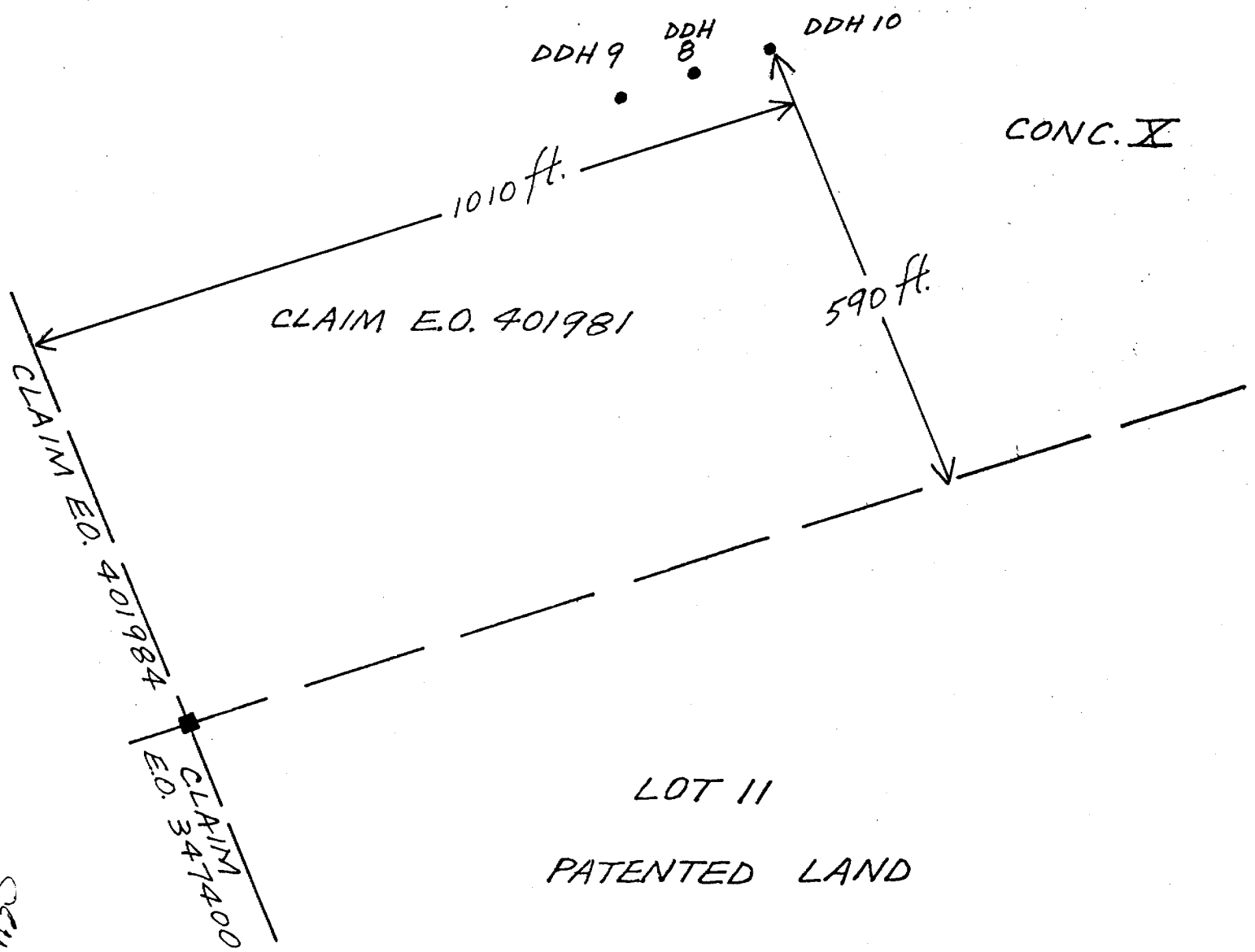
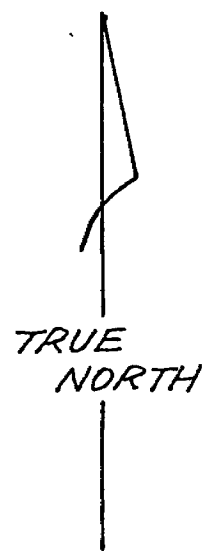
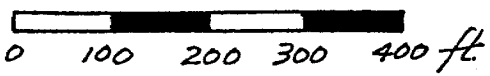
SEW.

MBS

ESSO MINERALS CANADA
a Div. of IMPERIAL OIL LIMITED
M^cCUE LAKE PROSPECT
MONMOUTH TOWNSHIP

DDH NO. 10

scale : 1 in. = 200 ft.



SEW.

IMPERIAL OIL LIMITED - DIAMOND DRILL HOLE LOG

PROPERTY M. CUE LAKE LOCATION CLAIM 401980
MONMOUTH TWP., ONTARIO
 NTS CODE 31D-16F HOLE NO. 11

LATITUDE AZIMUTH 340° PURPOSE TEST SKARN
 DEPARTURE DIP -45° STARTED AUG. 21, '78
 ELEVATION CORE BQ COMPLETED AUG. 26, '78
 SECTION LOGGED BY S. WATTERS
 REF. GRID 29+70E 1+58.S FINAL DEPTH: 266 ft.

DIP TESTS

FOOTAGE				DIP		LATITUDE		DEPARTURE	
TEST	FROM	TO	TOTAL		CORR.		CUM.		CUM.

Jan. 24, '79 Sheila Watters

FOOTAGE		DESCRIPTION	CORE SAMPLES								
FROM	TO		NO.	FROM	TO	WIDTH					AVERAGES
0	6	OVERBURDEN									
6	7.3	medium grained light grey QUARTZITE with diopside and minor chalcopyrite fracture along core axis									
7.3	9.4	medium grained pink quartz feldspar diopside GRANULITE with minor medium grained pegmatite									
9.4	41.5	medium and coarse grained light grey and light greenish grey QUARTZITE with fine grained diopside very minor feldspathic sections and small biotite-rich layers and concentrations of diopside minor pyrite and hematite in places a few .02 ft. wide stringers cutting across									

●
 SEW

FOOTAGE		DESCRIPTION	CORE SAMPLES							
FROM	TO		NO.	FROM	TO	WIDTH				AVERAGES
		foliation imperfect foliation at W 55° to CA. numerous fractures cutting foliation at low angles to CA. in lower half of section, some fractures are hematite stained highly fractured core at contact with lower section core breaks in .05-1ft. lengths R.A. total count readings in counts per minute using McPhar TV-1 scintillometer background is 3500 cpm 33.8-34.0 — off scale 34.0-34.1 — 20000 cpm								
41.5	44.2	medium grained pink quartz feldspar PEGMATITE with minor pyrite								

SEW

FOOTAGE		DESCRIPTION	CORE SAMPLES							AVERAGES
FROM	TO		NO.	FROM	TO	WIDTH				
44.2	46.5	medium grained pink quartz feldspar GRANULITE with minor diopside core breaks in .1 to .8 ft. lengths, highly fractured at upper contact R.A. 45.8 - 46.1 ——— 4000 cpm 46.1 - 46.4 ——— 5000								
46.5	48.0	massive medium grained phlogopite with minor calc silicate gneiss R.A. 47.0 - 48.0 ——— 5000 cpm								
48.0	49.0	CALC SILICATE GNEISS R.A. 48.0 - 48.5 ——— 7000 cpm 48.8 - 49.0								
49.0	56.0	medium grained pink quartz feldspar GRANULITE with minor diopside medium grained light greenish grey QUARTZITE								

SEW

FOOTAGE		DESCRIPTION	CORE SAMPLES							
FROM	TO		NO.	FROM	TO	WIDTH				AVERAGES
		with dipside and .8 ft. calc silicate gneiss at 54.5 ft. core quite fractured at 53 ft core breaks in .05-.9 ft. lengths R.A. in and near calc- silicate gneiss R.A. 50.6 - 51.0 ——— 5000 cpm 51.0 - 51.9 ——— 7000 54.5 - 54.7 ——— 4000 54.9 - 55.1 ——— 10000 55.1 - 55.5 ——— 8000 55.5 - 55.9 ——— 4000 55.9 - 56.1 ——— 10000								
56.0	58.2	medium grained grey- green CALC SILICATE MARBLE calcite-filled fracture along core axis R.A. 56.1' - 56.3' ——— 20000 cpm 56.3 - 58.2 ——— 4000								

SEW

FOOTAGE		DESCRIPTION	CORE SAMPLES							
FROM	TO		NO.	FROM	TO	WIDTH				AVERAGES
58.2	60.4	.7 ft. massive phlogopite .7 ft. buff-pink calcite with pyrite and chalco- pyrite blebs near centre .8' massive phlogopite (vein?)								
60.4	65.3	medium grained CALC- SILICATE MARBLE with abundant phlogopite and actinolite last .5 ft. is coarse pink wollastonite skarn vein(?) core breaks in .1-1.5 ft. lengths								
65.3	67.0	medium grained massive phlogopite with minor actinolite (?) vein?								
67.0	70.2	coarse grained buff wollastonite MARBLE one fracture at 40° to CA. vein?								

SEW

FOOTAGE		DESCRIPTION	CORE SAMPLES							
FROM	TO		NO.	FROM	TO	WIDTH				AVERAGES
70.2	90.9	<p>CALC SILICATE MARBLE with phlogopite, actinolite and serpentine in places several skarn sections and minor chondrodite in .6 ft. section uranium mineral in R.A. section is black, adamantine to resinous lustre with yellowish- brown streak (reddish stain around crystals) host rock is actinolite calcite diopside skarn. one serpentine-lined fracture R.A. 71.1'-71.3' ——— 8000 cpm 71.3-71.4 ——— 5000 74.3-74.8 ——— 4000 79.0-79.5 ——— 4000 79.9-80.2 ——— 30000 80.4-80.5 ——— 6000 80.5-80.9 ——— 5000 80.9-81.1 ——— 50000</p>								

SEW

FOOTAGE		DESCRIPTION	CORE SAMPLES							
FROM	TO		NO.	FROM	TO	WIDTH				AVERAGES
90.9	92.3	massive phlogopite, serpentine and minor calcite 2 fractures lined with serpentine								
92.3	110.3	medium grained light grey and light green- grey CALC/SILICATE MARBLE with variable amounts of phlogopite, serpentine, actinolite and talc with minor sections of pure marble ~10 fractures, most lined with serpentine core breaks in .2-1.3 ft. lengths								
110.3	117.0	medium grained off white MARBLE with minor serpentine(?) core breaks in .2-1.3 ft. lengths								

SEW

FOOTAGE		DESCRIPTION	CORE SAMPLES							
FROM	TO		NO.	FROM	TO	WIDTH				AVERAGES
117.0	176.5	<p>fine, medium and minor coarse grained light grey QUARTZITE with diopside.</p> <p>lft. of fine grained pink feldspar with concentrations of diopside and with pyrite in talc-lined fractures</p> <p>core highly and irregularly fractured both along C.A. and at high angles from various directions, some calcite-lined, a few lined with talc.</p>								
176.5	179.1	<p>SKARN with actinolite, diopside and serpentine(?) blebs of pyrite</p>								
179.1	181.3	<p>CALC SILICATE MARBLE and coarse white calcite R.A.</p> <p>179.0' - 179.3' — 6000 cpm</p>								

SEW

FOOTAGE		DESCRIPTION	CORE SAMPLES							
FROM	TO		NO.	FROM	TO	WIDTH				AVERAGES
181.3	208.7	<p>medium grained grey-green CALC SILICATE MARBLE and CALC SILICATE GNEISS with abundant phlogopite, actinolite, diopside, serpentine and talc</p> <p>core breaks in .1 to 1 ft lengths, several fractures - some calcite lined</p> <p>previously described uranium mineral found associated with fracture in R.A. section</p> <p>R.A.</p> <p>182.4' - 183.2' — 4000 cpm</p> <p>184.0 - 185.1 — 4000</p> <p>186.0 - 186.3 — 20000</p> <p>186.3 - 186.5 — 5000</p> <p>186.5 - 186.8 — 25000</p> <p>186.8 - 187.0 — 10000</p> <p>187.0 - 187.2 — 5000</p> <p>187.2 - 187.3 — 20000</p> <p>187.3 - 187.6 — 8000</p>								



SEW

FOOTAGE		DESCRIPTION	CORE SAMPLES								
FROM	TO		NO.	FROM	TO	WIDTH				AVERAGES	
208.7	209.7	fine to medium grained dark grey to black talc and phlogopite (vein?)									
209.7	222.0	light grey and green SKARN with tremolite, actinolite, phlogopite, wollastonite and calcite, core breaks in .2-1.3 ft. lengths									
222.0	254	light grey and light green CALC SILICATE MARBLE with variable amounts of phlogopite, tremolite, wollastonite, diopside, talc and serpentine 239-240' and 247.7-249.5' abundant serpentine and talc coarse graphite and minor pyrite in serpentine at 249.2 ft. core breaks in .3-1.5 ft. lengths									

SEW

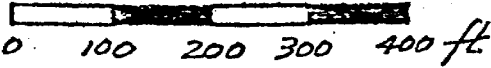
FOOTAGE		DESCRIPTION	CORE SAMPLES							
FROM	TO		NO.	FROM	TO	WIDTH				AVERAGES
254.0	266.0	<p>~ pure white medium grained marble SKARN mostly wollastonite with minor calcite</p> <p>END of HOLE 266 ft.</p>								

SEW

ESSO MINERALS CANADA
a Div. of IMPERIAL OIL LIMITED
M^cCUE LAKE PROSPECT
MONMOUTH TOWNSHIP

DDH-A10. 11,12

scale : 1 in. = 200 ft.



TRUE
NORTH

LOT 12 CONC. X, S. HALF

CLAIM 401980

1140 ft.

DDH
11,12

DDH 17,18

DDH
13,14

DDH
15,16

1100 ft.

MS

IMPERIAL OIL LIMITED - DIAMOND DRILL HOLE LOG

PROPERTY *M. CUE LAKE* ... LOCATION *CLAIM 401980*
MONMOUTH TWP., ONTARIO
 NTS CODE *31D-16F* ... HOLE NO. *12*

LATITUDE AZIMUTH PURPOSE *TEST SKARN*
 DEPARTURE DIP *-90°* STARTED *AUG. 26, '78*
 ELEVATION CORE *BQ* COMPLETED *AUG. 31, '78*
 SECTION LOGGED BY *S. WATTERS*
 REF. GRID *29+70E 1+58S* *FINAL DEPTH 127 ft.*

DIP TESTS

FOOTAGE				DIP		LATITUDE		DEPARTURE	
TEST	FROM	TO	TOTAL		CORR.		CUM.		CUM.

Jan. 24, '79 Sheila Watters

FOOTAGE		DESCRIPTION	CORE SAMPLES							
FROM	TO		NO.	FROM	TO	WIDTH				AVERAGES
0	4	OVERBURDEN								
4	57.9	<p>fine medium and coarse grained light grey and greenish grey QUARTZITE with diopside. interlayered fine and medium grained quartzite from 4-49 ft. with predominantly coarse grain size below several small (.1-.5 ft) sections of fine grained syenite with minor diopside minor diopside concentrations in quartzite, minor pyrite. foliation 10-20° to C.A. core breaks in .01-1 ft. lengths ~ 11 fracture per foot at various angles to C.A., some hematite stained, some thinly lined with talc</p> <p>R.A. / total count readings in counts per minute using McPhar TV-1 scintillometer 34.3'-34.5' — 9000 cpm</p>								

SEU

FOOTAGE		DESCRIPTION	CORE SAMPLES							
FROM	TO		NO.	FROM	TO	WIDTH				AVERAGES
		52.2' - 52.7' — 6000 cpm								
		55.2 - 55.6 — 4000								
		55.6 - 56.4 — 5000								
		57.5 - 57.8 — 10000								
		background is 3500 c.p.m.								
57.9	59.5	coarse diopside and actinolite with minor quartzite sections R.A.								
		57.8 - 58.1 — 4000								
		58.1 - 58.5 — 6000								
		59.1 - 59.5 — 4000								
59.5	64.1	coarse and medium grained actinolite and diopside with finer grained diopside (darker green) or forsterite at top and bottom of section core breaks in .2 - .8 ft. lengths R.A.								
		63.8' - 64.1' — 15000 cpm								
64.1	84.5	medium and coarse grained light grey QUARTZITE with diopside, very minor sections								



SED

FOOTAGE		DESCRIPTION	CORE SAMPLES								
FROM	TO		NO.	FROM	TO	WIDTH				AVERAGES	
		of fine grained pink quartz feldspar pegmatite (.05-.5 ft. long) minor pyrite .8 ft. calc silicate gneiss at 79 ft. irregular fractures along and at ~60° to CA., some calcite lined									
84.5	85.5	coarse actinolite diopside and calcite									
85.5	87.1	85.5-86 - medium grained grey QUARTZITE with diopside, 86-87.1 pink quartz feldspar PEGMATITE fractures in both									
87.1	90.0	medium to coarse grained CALC SILICATE MARBLE with phlogopite and actinolite and 1 ft. of massive phlogopite in centre of section									

slw

FOOTAGE		DESCRIPTION	CORE SAMPLES								
FROM	TO		NO.	FROM	TO	WIDTH				AVERAGES	
90.0	92.0	light green SKARN with tremolite, actinolite and forsterite(?)									
92.0	101.5	coarse grained CALC SILICATE MARBLE with actinolite, tremolite, and light green diopside. minor phlogopite near base of section one calcite-lined fracture and minor concentrations of talc near base of section									
101.5	103.9	medium grained buff wollastonite SKARN with calcite and minor phlogopite and chondrodite near base of section									
103.9	105.3	massive coarse grained light green diopside and medium grained phlogopite									

MSW

FOOTAGE		DESCRIPTION	CORE SAMPLES							
FROM	TO		NO.	FROM	TO	WIDTH				AVERAGES
105.3	108	coarse grained light grey WOLLASTONITE SKARN with minor light green diopside several talc-lined fractures near base R.A. 107.8' - 108.2' — 6500 cpm								
108	111	fine grained pink quartz feldspar PEGMATITE with diopside								
111	112.4	coarse actinolite, phlogopite, diopside and feldspar with blebs of chalcopyrite and crystals of uranium mineral with yellowish brown streak — betafite? R.A. 111.2 - 111.5 — 4000 cpm 111.5 - 111.9 — 15000 111.9 - 112.1 — 10000 112.1 - 112.5 — 22500								
112.4	116.5	fine grained pinkish grey								

SEW

FOOTAGE		DESCRIPTION	CORE SAMPLES								
FROM	TO		NO.	FROM	TO	WIDTH				AVERAGES	
		quartz feldspar PEGMATITE, grades into quartzite at base R.A. 112.5 - 112.7 — 10000 cpm									
116.5	125.2	interlayered fine grained grey quartz feldspar PEGMATITE with diopside- rich QUARTZITE core breaks in .4-1.5 ft. lengths									
125.2	127.0	fine grained QUARTZITE with diopside END of HOLE 127 ft.									



SEW

ESSO MINERALS CANADA
a Div. of IMPERIAL OIL LIMITED
M^cCUE LAKE PROSPECT
MONMOUTH TOWNSHIP

DDH-NO. 11, 12

scale : 1 in. = 200 ft.



TRUE
NORTH

LOT 12 CONC. X, S. HALF

CLAIM 401980

1140 ft.

DDH
11, 12

DDH 17, 18

DDH
13, 14

DDH
15, 16

1100 ft.

MBC

IMPERIAL OIL LIMITED - DIAMOND DRILL HOLE LOG

PROPERTY *MCCUE LAKE* LOCATION *CLAIM 401980*
MONMOUTH TWP., ONTARIO
 NTS CODE *31D-16F* HOLE NO. *13*

LATITUDE AZIMUTH *340°* PURPOSE *TEST SKARN*
 DEPARTURE DIP *-45°* STARTED *SEPT. 1, '78*
 ELEVATION CORE *89* COMPLETED *SEPT. 5, '78*
 SECTION LOGGED BY *S. WATERS*
 REF. GRID *22400E 5473S* FINAL DEPTH: *100 ft.*

DIP TESTS

FOOTAGE				DIP		LATITUDE		DEPARTURE	
TEST	FROM	TO	TOTAL		CORR.		CUM.		CUM.

Jan. 24, '79 Sheila Waters

FOOTAGE		DESCRIPTION	CORE SAMPLES					
FROM	TO		NO.	FROM	TO	WIDTH		AVERAGES
0	10	OVERBURDEN						
10	11.8	medium grained white siliceous MARBLE						
11.8	22.5	<p>medium grained buff to grey SKARN with wollastonite, light green diopside, minor phlogopite and actinolite and some calcite, minor apatite and pyrite</p> <p>tiny betafite? crystals in diopside rich section with minor pink calcite some crystals have midnight blue coating, one crystal appears to be 6 sided, -yellowish brown streak</p> <p>R.A.</p> <p>12.2 - 13.1 ——— 8000 cpm</p> <p>13.1 - 13.4 ——— 10000</p> <p>13.4 - 13.7 ——— 12500</p> <p>13.7 - 14.0 ——— 8000</p> <p>14.0 - 14.1 ——— 40000</p> <p>14.1 - 14.4 ——— 30000</p>						

total count readings in counts per minute using McPhar TV-1 scintillometer background is 3500 cpm.

SEW

FOOTAGE		DESCRIPTION	CORE SAMPLES							
FROM	TO		NO.	FROM	TO	WIDTH				AVERAGES
		14.4' - 14.8' ————— 20000 cpm 14.9 - 15.0 ————— 17500 15.0 - 15.2 ————— 10000								
22.5	26.3	medium grained buff CALC SILICATE MARBLE with phlogopite, minor actinolite and very minor chondrodite and chalcopyrite core breaks in .2-1 ft. lengths								
26.3	35.8	fine grained light brownish grey CALC SILICATE GNEISS with abundant phlogopite and minor chalcopyrite and pyrrhotite R.A. 31.4 - 31.6 ————— 10000 cpm 31.6 - 31.7 ————— 35000 31.7 - 31.9 ————— 37500 31.9 - 32.4 ————— 5000								
35.8	38.7	medium grained light grey CALC SILICATE MARBLE with minor actinolite,								

SEW

FOOTAGE		DESCRIPTION	CORE SAMPLES							
FROM	TO		NO.	FROM	TO	WIDTH				AVERAGES
		wollastonite, chondrodite								
38.7	42.6	medium grained light brownish grey CALC SILICATE GNEISS with .8 ft coarser, light diopside vein(?) at 42 ft.								
42.6	46.2	coarse calcite and actinolite, minor phlogopite large blebs of chalcopyrite at 46 ft. (vein?)								
46.2	48.5	medium grained buff CALC SILICATE MARBLE with chondrodite								
48.5	52.4	coarse calcite and actinolite minor phlogopite, pyrrhotite								
52.4	55.0	fine grained pink quartz feldspar granite top 1.5 ft. very fine grained light grey QUARTZITE at base								

SEW

FOOTAGE		DESCRIPTION	CORE SAMPLES							
FROM	TO		NO.	FROM	TO	WIDTH				AVERAGES
55.0	63.5	coarse and medium grained phlogopite, diopside, actinolite, calcite SKARN with minor pyrite and abundant blebs of pyrrhotite in bottom half of section core breaks in .1-1 ft. lengths RA! 62.2 - 62.5 ——— 10000 cpm 62.7 - 63.1 ——— 6000 63.1 - 63.4 ——— 8000								
63.5	70.4	DIOPSIDE SKARN with minor calcite, phlogopite, and very minor small quartzite section core breaks in .1-.4 ft. lengths								
70.4	72.4	coarse calcite actinolite vein								
72.4	89.8	interlayered fine grained grey diopside-rich QUARTZITE								

SKW

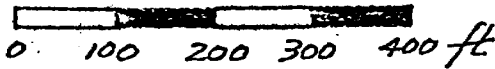
FOOTAGE		DESCRIPTION	CORE SAMPLES								
FROM	TO		NO.	FROM	TO	WIDTH				AVERAGES	
		<p>and green DIOPSIDE SKARN coarse actinolite abundant from 86.8-89.4 ft fractures ~ 1 per ft. at various angles to C.A. R.A.</p> <p>73.1-73.5' ——— 8000 cpm 77.9-78.0 ——— 5000 78.9-79.1 ——— 8000</p>									
89.8	98.3	medium grained grey QUARTZITE with diopside									
98.3	100	medium grained pinkish grey biotite feldspar GNEISS with minor quartzite foliation 20° to C.A.									
		END of HOLE 100 ft.									

SEW

ESSO MINERALS CANADA
a Div. of IMPERIAL OIL LIMITED
M^cCUE LAKE PROSPECT
MONMOUTH TOWNSHIP

DDH-NO. 13, 14

scale : 1 in. = 200 ft.



TRUE
NORTH

LOT 12 CONC. X, S. HALF
CLAIM 401980

DDH
11, 12

DDH 17, 18

DDH
13, 14

DDH
15, 16

360 ft.

675 ft.

MBS

IMPERIAL OIL LIMITED - DIAMOND DRILL HOLE LOG

CLAIM 401980

PROPERTY M^CQUE LAKE

LOCATION MONMOUTH TWP., ONTARIO

NTS CODE 31D-16 F

HOLE NO. 1A

LATITUDE AZIMUTH PURPOSE TEST SKARN

DEPARTURE DIP -90° STARTED SEPT. 6, '78

ELEVATION CORE BQ COMPLETED SEPT. 7, '78

SECTION LOGGED BY S. WATTERS

REF. GRID 22+00E 54735

FINAL DEPTH: 101 ft.

DIP TESTS

TEST	FOOTAGE			DIP		LATITUDE		DEPARTURE	
	FROM	TO	TOTAL		CORR.		CUM.		CUM.

Jan. 24, '79 Sheila Watters

FOOTAGE		DESCRIPTION	CORE SAMPLES							
FROM	TO		NO.	FROM	TO	WIDTH				AVERAGES
0	6.7	OVERBURDEN								
6.7	8.5	medium grained light grey QUARTZITE .3 ft. of massive medium grained diopside at base of section								
8.5	11.3	medium grained white MARBLE with small phlogopite section 1 fracture at 60° to c.A. lined with calcite crystals								
11.3	18.6	medium grained light buff and grey CALC SILICATE MARBLE with phlogopite, chondrodite and light green diopside and tremolite, minor siliceous marble sections								
18.6	36.2	fine and medium grained brownish grey CALC SILICATE GNEISS with calcite, diopside and								

SEW

FOREGAGE		DESCRIPTION	CORE SAMPLES								
FROM	TO		NO.	FROM	TO	WIDTH				AVERAGES	
		abundant phlogopite and minor concentrations of massive phlogopite. foliation variable, generally ~ 65° to C.A. several sections .4-.8 ft. long of quartzite with sphene core breaks in .1 to .5 ft. lengths									
36.2	47.0	medium and coarse grained light wollastonite diopside SKARN with abundant blebs of pyrrhotite in upper half of section first 3 ft. mostly very coarse grained scapolite diopside and massive phlogopite with chalcopyrite and pyrrhotite minor talc-lined fractures core breaks in .1-1 ft lengths R.A. 37.1' - 37.3' ——— 4000 cpm 37.9 - 38.1 ——— 6000									

SEW

FOOTAGE		DESCRIPTION	CORE SAMPLES							
FROM	TO		NO.	FROM	TO	WIDTH				AVERAGES
		38.3' - 38.6' ——— 4000 cpm 38.6 - 39.1 ——— 15000								
47.0	57.0	medium grained grey to green diopside, actinolite, calcite, phlogopite SKARN with minor wollastonite and section of calc silicate marble, core breaks .2-1.3 ft. minor pyrite R.A. in diopside-rich sections and calc-silicate marble R.A., 47.8' - 49.2' ——— 5000 cpm 49.2 - 50.1 ——— 4000 55.1 - 55.3 ——— 10000 55.3 - 55.6 ——— 5000 56.1 - 56.3 ——— 4000 56.3 - 56.7 ——— 6000								
57.0	59.0	coarse calcite and minor actinolite and diopside with blebs of chalcopyrite								

SEW

FOTAGE		DESCRIPTION	CORE SAMPLES							
FROM	TO		NO.	FROM	TO	WIDTH				AVERAGES
59.0	69.4	medium grained greenish grey CALC SILICATE MARBLE abundant diopside and less abundant calcite, actinolite, and phlogopite minor chalcopryrite and pyrrhotite a few irregular fractures R.A. 60.5-61.4 ——— 4000 cpm 61.4-61.8 ——— 6000								
64.4	67.5	coarse calcite with some coarse phlogopite and diopside concentrations								
67.5	70.3	DIOPSIDE ACTINOLITE SKARN with minor calcite betafite crystals? R.A. 69.2-69.9 ——— 6000 cpm								
70.3	74.5	coarse calcite with minor coarse actinolite and i.3								

SEW

FOOTAGE		DESCRIPTION	CORE SAMPLES								
FROM	TO		NO.	FROM	TO	WIDTH				AVERAGES	
		ft. of coarse actinolite and diopside at 73 ft. beta fite? crystals at bottom of section vein? R.A. 74.3-74.5 — off scale									
74.5	76.5	DIOPSIDE SKARN with minor pink feldspar gneiss 75.5-75.7 — 4000 cpm 76.3-76.5 — 10000									
76.5	81.2	coarse calcite with coarse actinolite and diopside a few large pink feldspar crystals minor irregular fractures at high angles to C.A. beta fite crystal? R.A. 76.5-76.8 — 6000 cpm									
81.2	84.8	medium grained grey-green CALC SILICATE GNEISS with minor									

SEW

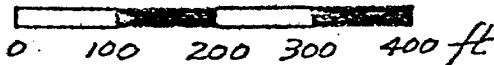
FOOTAGE		DESCRIPTION	CORE SAMPLES							
FROM	TO		NO.	FROM	TO	WIDTH				AVERAGES
		section of grey quartzite irregular fractures at various angles to C.A. core breaks in 1-.8 ft. lengths RA. 83.0' - 83.4' — 5000cpm								
84.8	93.7	fine grained grey QUARTZITE with diopside and reddish brown garnet in places foliation at high angle to C.A.								
93.7	96.0	medium grained pinkish grey quartz feldspar GRANULITE with diopside and minor hornblende imperfect foliation at 65° to C.A.								
96.0	101	fine and medium grained grey QUARTZITE with diopside, core breaks in .3-1ft. lengths. END of HOLE 101ft.								

SEW

ESSO MINERALS CANADA
a Div. of IMPERIAL OIL LIMITED
M^cCUE LAKE PROSPECT
MONMOUTH TOWNSHIP

DDH-NO. 13, 14

scale : 1 in. = 200 ft.



TRUE
NORTH

LOT 12 CONC. X, S. HALF
CLAIM 401980

DDH
11, 12

DDH 17, 18

DDH
13, 14

DDH
15, 16

360 ft.

675 ft.

MSW

IMPERIAL OIL LIMITED - DIAMOND DRILL HOLE LOG

PROPERTY M. CUE LAKE LOCATION CLAIM 401980
MONMOUTH TWP., ONTARIO
 NTS CODE 31D-16F HOLE NO. 15

LATITUDE AZIMUTH 340° PURPOSE TEST SKARN
 DEPARTURE DIP -45° STARTED SEPT. 8, '78
 ELEVATION CORE BQ COMPLETED SEPT. 13, '78
 SECTION LOGGED BY S. WATTERS
 REF. GRID 22+84E 5+70S FINAL DEPTH: 100 ft.

DIP TESTS

FOOTAGE				DIP		LATITUDE		DEPARTURE	
TEST	FROM	TO	TOTAL		CORR.		CUM.		CUM.

Jan. 24, '79 Sheila Watters

FOOTAGE		DESCRIPTION	CORE SAMPLES							
FROM	TO		NO.	FROM	TO	WIDTH				AVERAGES
0	4	OVERBURDEN	total count radiometric readings in counts per minute using M ^c Phar TV-1 scintillometer back ground is 3500 cpm							
4	34.2	medium and coarse grained light grey QUARTZITE with diopside and very minor pink quartz feldspar granulite. limonite stained fractures (with pyrite) at various angles to c.A., ~1 fracture per foot.								
34.2	46.4	medium grained light buff wollastonite SKARN with minor calcite, massive phlogopite, and chondrodite at 34.5 ft. minor calc silicate marble core breaks in .7-1.5 ft. lengths								
46.4	53.5	medium grained brownish grey CALC SILICATE GNEISS with calcite, phlogopite, and diopside foliation ~60° to c.A.								

SEW

FOOTAGE		DESCRIPTION	CORE SAMPLES							
FROM	TO		NO.	FROM	TO	WIDTH				AVERAGES
53.5	55.0	light green medium grained wollastonite diopside SKARN								
55.0	56.6	massive phlogopite and calcite with finer grained diopside								
56.6	67.0	medium grained light grey to light green MARBLE with minor phlogopite, diopside, and chondrodite. minor skarn section and one section rich in light green diopside. a few talc-lined fractures at high angles to C.A. RA. in light green diopside marble RA. 64.9' - 65.2' — 8000 cpm 65.2 - 65.5 — 10000 65.5 - 65.7 — 8000								

SLW

FOOTAGE		DESCRIPTION	CORE SAMPLES							
FROM	TO		NO.	FROM	TO	WIDTH				AVERAGES
67.0	73.0	coarse calcite diopside and actinolite with finer grained green diopside rich sections R.A. with diopside R.A. 70.6 - 70.8 — 5000 cpm 71.1 - 71.4 — 10000 71.7 - 71.7 — 20000 71.7 - 71.8 — 10000 core breaks in .1-.6 ft. lengths								
73.0	100.	fine and medium grained light grey QUARTZITE with diopside. foliation 65° to C.A. .4 ft. diopside concentra- tion with R.A. at 87 ft. ~ 2 limonite stained fractures per foot at various angles to C.A. core highly fractured at 89 ft. R.A. END of HOLE 100 ft. 86.8 - 87.0 — 10000 cpm 87.0 - 87.2 — 40000								

SEW

ESSO MINERALS CANADA
a Div. of IMPERIAL OIL LIMITED
M^cCUE LAKE PROSPECT
MONMOUTH TOWNSHIP

DDH-NO. 15, 16

scale : 1 in. = 200 ft.



TRUE
NORTH

LOT 12 CONC. X, S. HALF
CLAIM 401980

DDH
11, 12

DDH 17, 18

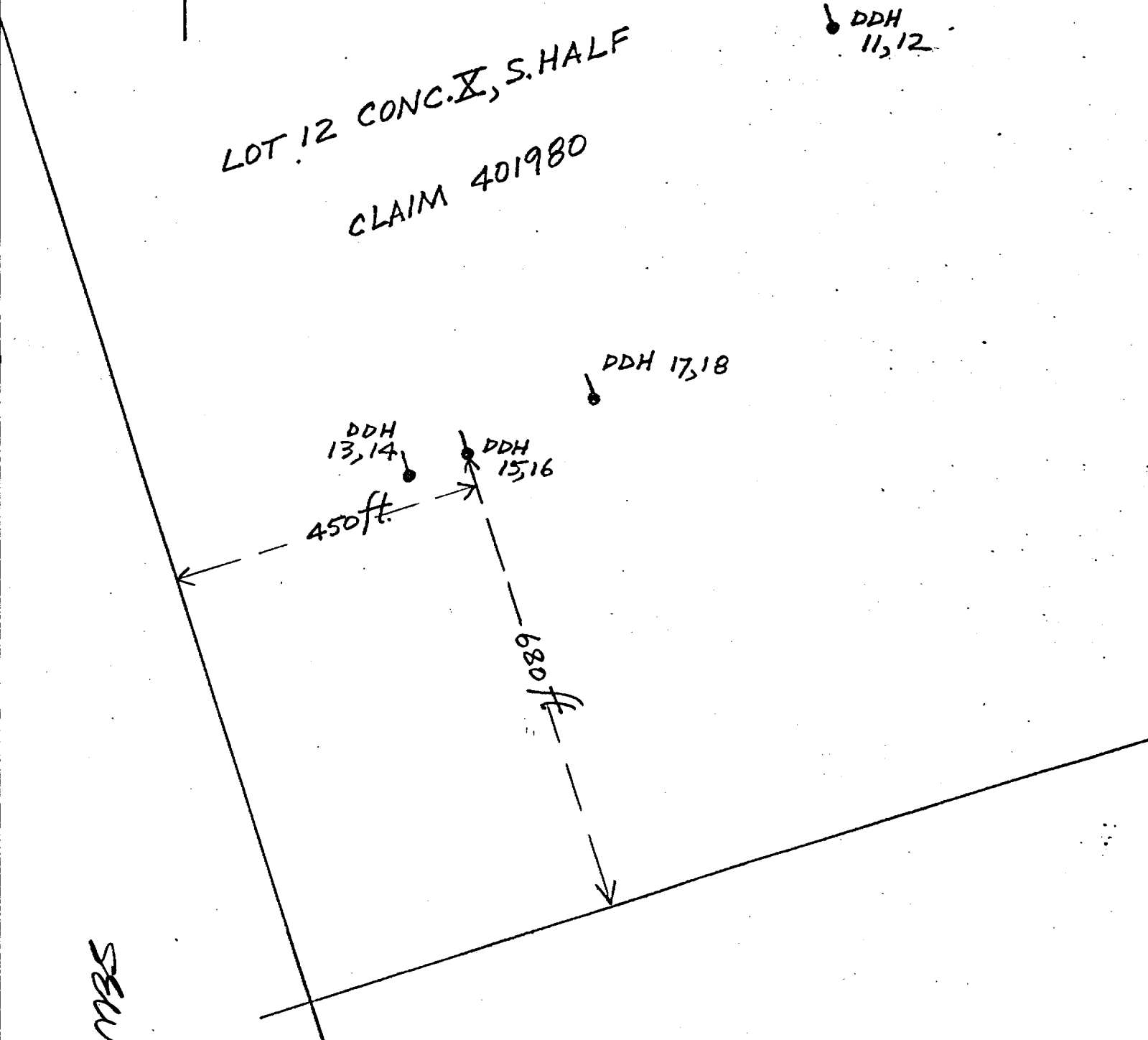
DDH
13, 14

DDH
15, 16

450 ft.

680 ft.

MBS



IMPERIAL OIL LIMITED - DIAMOND DRILL HOLE LOG

PROPERTY *MCCUE LAKE* LOCATION *CLAIM 401980*
MONMOUTH TWP, ONTARIO
 NTS CODE *31D-16F* HOLE NO. *16*

LATITUDE AZIMUTH PURPOSE *TEST SKARN*
 DEPARTURE DIP *-90°* STARTED *SEPT. 13, '78*
 ELEVATION CORE *BQ* COMPLETED *SEPT. 14, '78*
 SECTION LOGGED BY *S. WATERS*
 REF. GRID *22+84E 5+70S* FINAL DEPTH: *100 ft.*

DIP TESTS

TEST	FOOTAGE			DIP		LATITUDE		DEPARTURE	
	FROM	TO	TOTAL		CORR.		CUM.		CUM.

Jan, 24, '79 Sheila Waters

FOOTAGE		DESCRIPTION	CORE SAMPLES							
FROM	TO		NO.	FROM	TO	WIDTH				AVERAGES
0	3	OVERBURDEN								
3	32	<p>fine medium and coarse grained grey QUARTZITE with diopside and minor actinolite</p> <p>.8 ft. of biotite-rich calc silicate gneiss</p> <p>minor pink feldspar granulite sections</p> <p>a few irregular hematite and limonite stained fractures at various angles to c.A.</p> <p>core breaks in .1-1 ft. lengths</p>								
32	36.1	<p>medium and coarse grained green diopside SKARN (with forsterite?)</p> <p>RA. in medium grained section</p> <p>RA.</p> <p>total count readings in counts per minute using McPhar TV-1 scintillometer</p>								

Jan 24, '79 JEW.

FOOTAGE		DESCRIPTION	CORE SAMPLES							
FROM	TO		NO.	FROM	TO	WIDTH				AVERAGES
		background, is 3500 c.p.m. 34.4' - 34.6' ——— 4000 cpm 34.6 - 34.9 ——— 8000 34.9 - 35.0 ——— 10000 35.0 - 35.6 ——— 15000								
36.1	38.7	medium grained light grey QUARTZITE several fractures at both low and steep angles to C.A.								
38.7	41.0	medium to coarse grained green diopside, SKARN with minor chalcopyrite and graphite								
41.0	52.3	medium grained off white to buff to grey MARBLE and minor calc silicate marble with phlogopite and minor diopside and chondrodite R.A. 51.3 - 51.4 ——— 4000 cpm 51.4 - 51.7 ——— 20000								

SEW

FOOTAGE		DESCRIPTION	CORE SAMPLES								
FROM	TO		NO.	FROM	TO	WIDTH				AVERAGES	
		51.7' - 52.0' — 10000 cpm. 52.0 - 52.3 — 7000									
52.3'	57.1	<p>fine grained brownish grey CALC SILICATE GNEISS with phlogopite calcite, diopside, minor pyrite</p> <p>53 - 54.2 medium grained grey tremolite actinolite skarn</p> <p>52.3 - 53 and bottom .4 ft. is massive phlogopite and diopside, minor pyrite</p> <p>betafite? crystals in upper part of section</p> <p>R.A. in skarn and with massive phlogopite and diopside.</p> <p>R.A.</p> <p>52.8' - 53.2' — 4000 cpm 56.6 - 56.8 — 7000</p>									
57.1	62.3	medium grained light grey CALC SILICATE MARBLE with phlogopite									

SEW

FOSSAGE		DESCRIPTION	CORE SAMPLES							
FROM	TO		NO.	FROM	TO	WIDTH				AVERAGES
		diopside, actinolite, and minor chondrodite. core breaks in .4-1.3 ft. lengths								
62.3	66.8	medium grained off white MARBLE with phlogopite and very minor graphite and chondrodite core breaks in .1-1.2 ft. lengths								
66.8	69.5	coarse grained DIOPSIDE SKARN with actinolite .4 ft. coarse calcite above the bottom .8 ft. of fine to medium grained DIOPSIDE skarn which contains R.A. R.A. 68.8-69.0 ——— 5000 cpm 69.2-69.4 ——— 9000 69.4-69.5 ——— 5000								

SEW

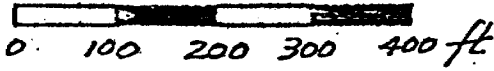
FOOTAGE		DESCRIPTION	CORE SAMPLES							
FROM	TO		NO.	FROM	TO	WIDTH				AVERAGES
69.5	100	<p>fine and medium grained grey QUARTZITE with minor diopside 1 ft. of biotite gneiss at 89-90 ft. two .6 ft. sections of fine grained pink quartz feldspar pegmatite near base foliation ~ 70° to C.A. several calcite-lined fractures at low angle to C.A., core breaks in 1-1.5 ft. lengths</p> <p>END of HOLE 100 ft.</p>								

SEW

ESSO MINERALS CANADA
a Div. of IMPERIAL OIL LIMITED
M^cCUE LAKE PROSPECT
MONMOUTH TOWNSHIP

DDH-NO. 15, 16

scale : 1 in. = 200 ft.



TRUE
NORTH

LOT 12 CONC. X, S. HALF
CLAIM 401980

DDH
11, 12

DDH 17, 18

DDH
13, 14

DDH
15, 16

450 ft.

680 ft.

MBS