

Diamond Drilling



31D16SW0006 18 GLAMORGAN

010

Township GLAMORGAN

Report NO 18

Work performed by: ST. JOSEPH EXPLORATIONS LIMITED

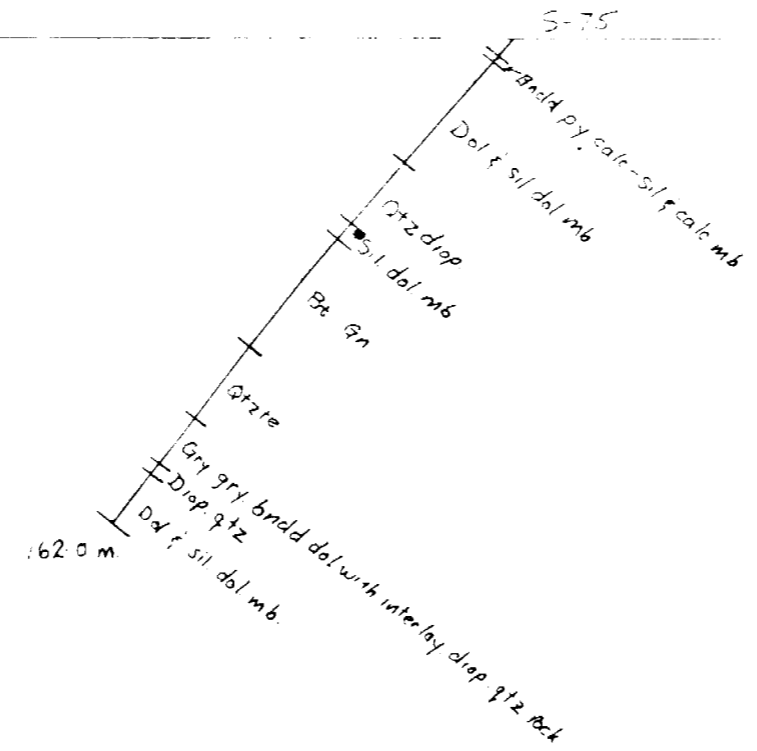
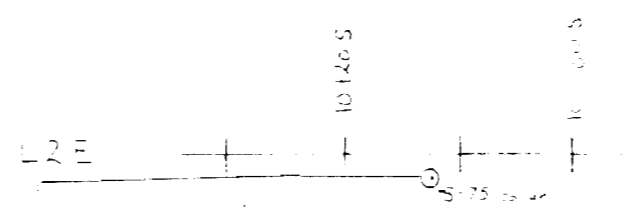
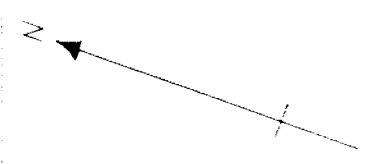
Claim NO	Hole NO	Footage	Date	Note
EO 469946	S-75	162 m	Feb/79	(1)
EO 469954	S-76	99 m	Feb/79	(2)
EO 469958	S-77	102 m	Feb/79	(3)

363 m

Notes: (1) # 65-79  
(2) # 66-79  
(3) # 67-79

HOLE NO. S-75

SECTION East 1/2 sec



ST. JOSEPH EXPLORATIONS LIMITED  
PROPERTY SALERNO LAKE  
GRID EAST GRID  
CO-ORD. 10+43 S 1+94 E  
SCALE 1:2000









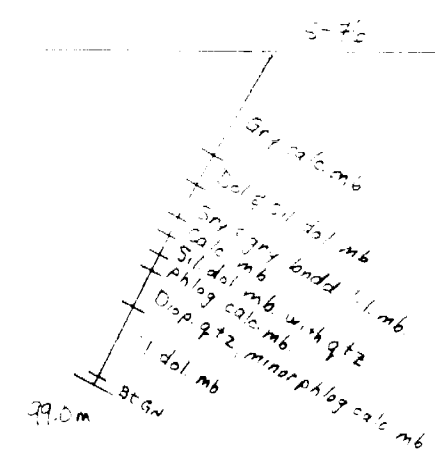
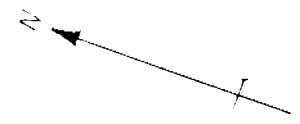
HOLE NO. S-76

SECTION PLAN OF HOLE

S-76

4150 S  
5110 S

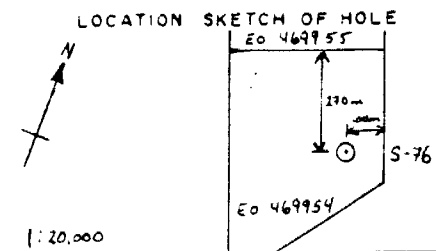
115 M



ST. JOSEPH EXPLORATIONS LIMITED  
PROPERTY SALERNO LAKE  
GRID EAST GRID  
CO-ORD. 15+59 E 4+87 S  
SCALE 1:2000

Tropari

PROPERTY SALERNO LAKE	TP OR AREA GLAMORGAN TWP.	AZIMUTH 340	DATE STARTED February 23, 1979	CORRECTED <del>X</del> TESTS			
PROJECT 3188	LOT & CONC. Conc. I, Lot 8	DIP -60°	DATE COMPLETED February 26, 1979	Depth	MBrg	TBrg	Dip
CLAIM NO. EO 469954	CO-ORDINATES. 15+59E	LENGTH 99m	DRILLED BY St. Lambert Drilling	99m	-64	351	341
GRID NO. EAST GRID	4+87S	COLLAR ELEV.	LOGGED BY Alar Soever				



#79-66

METRES		SECTION 1" =	DESCRIPTION	CORRECTED <del>X</del> TESTS				ASSAYS
FROM	TO			SAMPLE NO	FROM	TO	LENGTH	
			OBJECTIVE: TO TEST SOIL GEOCHEMICAL ANOMALY AND WEAK I.P. ANOMALY					
0.0	2.9		OVERBURDEN					
2.9	20.0		Mottled Light Grey Calcitic Marble - lt. grey, c.g. to m.g. towards base, mottled to weakly banded, minor f.g. diss graphite, py. Locally highly phlogopitic patches with minor quartz, f.g. py, calc. sil. C.A. ~60° 15.5 - small patch of granitic material, quartz, pink feldspar and bio., po. 18.8-19.1 - patch of black f.g. pyritic calc. silicate, large books of mica.					
20.0	21.7		Pale Green to Buff Calcitic Marble with Quartz (~10%) c.g. w/minor f.g. diss phlogopite and small patches of quartz, minor diss py. 20.4-21.0 - quartz-rich section up to 15% quartz					
21.7	24.1		Calcitic Marble w/Bands of Pyritic Calc. Silicate & Banded Diopside-Quartz. White to pale grey c.g. calcitic marble, phlogopitic w/minor f.g. diss py. 22.4-22.6 - bands of f.g. pyritic calc. silicate. 23.0-23.4 - banded quartz-diopside w/large patches of py-po, ~10% combined py-po, f.g. pyritic calc. silicate @ 23.4.					

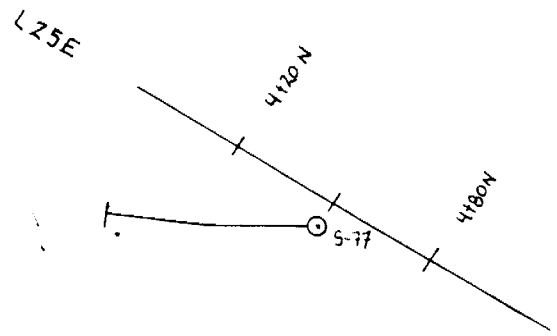
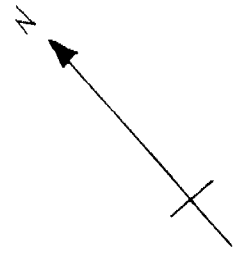




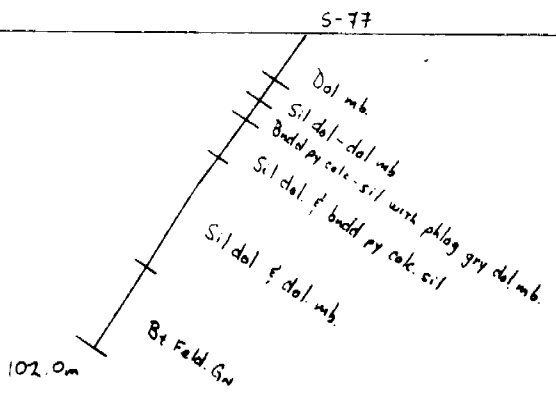




GLAMORGAN 67-79

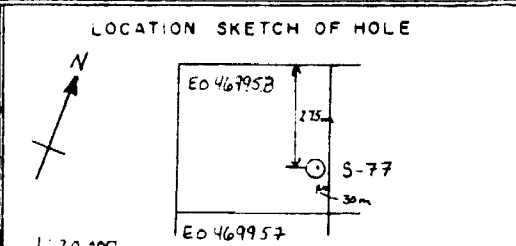


HOLE NO. S-77  
SECTION PLAN OF HOLE



ST. JOSEPH EXPLORATIONS LIMITED  
PROPERTY SALERNO LAKE  
GRID EAST GRID  
CO-ORD. 4+50N 24+93E  
SCALE 1:2000

Tropari

PROPERTY SALERNO LAKE	TP OR AREA GLAMORGAN TWP.	AZIMUTH 310°	DATE STARTED February 27, 1979	CORRECTED <del>RX</del> TESTS				LOCATION SKETCH OF HOLE 
PROJECT 3188	LOT & CONC.	DIP -55°	DATE COMPLETED February 28, 1979	Depth	MBr	TBr	Dip	
CLAIM NO. EO 469958	CO-ORDINATES 4+50N	LENGTH 102m	DRILLED BY St. Lambert Drilling	102m	326°	316°	-58°	
GRID NO. EAST	24+93E	COLLAR ELEV.	LOGGED BY D. Robertson					

METRES		SECTION	DESCRIPTION	SAMPLE NO.			ASSAYS
FROM	TO	1"=		FROM	TO	LENGTH	
			OBJECTIVE: TEST SOIL GEOCHEMISTRY ANOMALY AND I.P. ANOMALY				
0.0	1.6		Overburden				
1.6	14.6		Dolomitic Marble - buff-white to pale grey, f.to m.g. Calcitic. Minor diopside-quartz, v.f.g. Finely dissem phlogopite & patches of phlogopite. Traces of dissem py-po. 2.3-4.8 - section of micaceous dolomitic marble - mica - both biotite and phlogopite (2-7%) Serp. patches & dissem Fe sulphides. Minor f.g. diop. w/local quartz knots. 9.4-10.0 - short section of calcitic marble and short intervals of calcitic marble thru section, 12.0-14.6.				
14.6	15.7		Calcitic Marble - salmon pink to brick red, f.to m.g. Oxidized section of phlogopitic calcitic marble. Minor serp. patches & traces of oxidized Fe sulphides.				
15.7	16.5		Silicated Dolomitic Marble - off-white, f.to m.g., fetid. Minor serpentinization of entire section with large patches of greasy serp. alter'n. Dissem py-po 2%. Minor phlogopite.				
16.5	17.6		Micaceous Altered Dolomitic Marble - dark greenish brown, f.to m.g., swirled texture. Rock is pred. biotite & phlogopite 70% w/m.g. dolomite xls. Serp. alter'n patches. Dissem py-po 1%. M to a				



