



31D16SW0017 10 GLAMORGAN

010

## Diamond Drilling

Township of Glamorgan

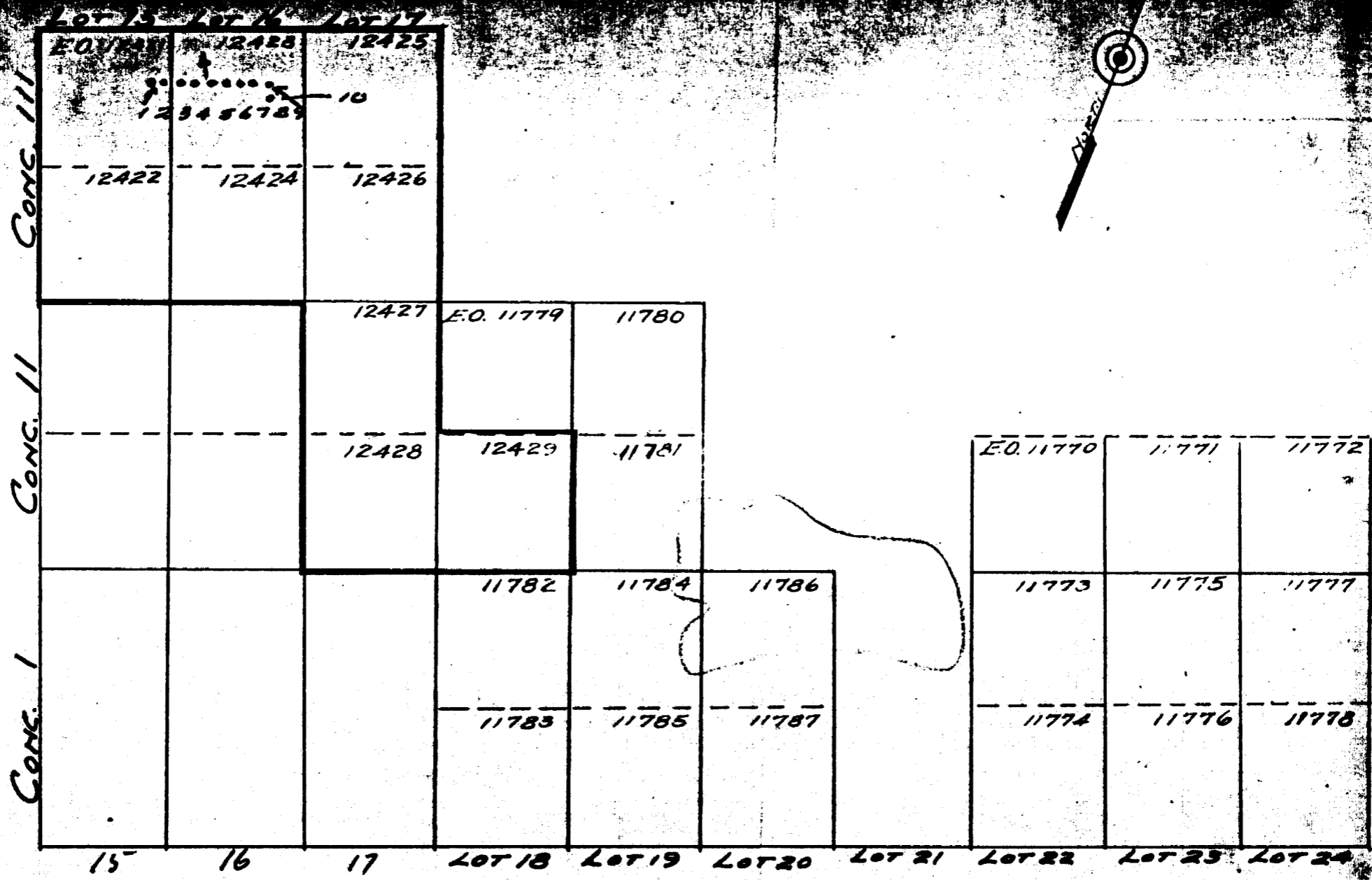
Report N<sup>o</sup>: 10

Work performed by: Nu-World Uranium Mines Ltd

Claim N <sup>o</sup>	Hole N <sup>o</sup>	Footage	Date	Note
EO 12421	1	40'		(1)
	2	45'		
EO 12423	3	40'		
	4	40'		
	5	42'		
	6	41'		
	7	44'		
	8	40'		
	9	40'		
	10	47'		

### Notes:

- (1) Drilling dates for holes 1-10 are unknown; location map is dated November 17, 1955.



NU-WORLD URANIUM MINES LTD.

HALIBURTON COUNTY GLAMORGAN TWP.

SCALE 1" = 20 CHAINS  
 WILBERFORCE, ONT.

NOV. 17-1955  
 J.W. Swanson

Twp. Glamorgan

1450 E. of No. 4 Post

E.O. 12421

PROPERTY NU-WORLD Uranium Mines Ltd.

HOLE NO. 1

SHEET NO.

File 29129

FOOTAGE		DESCRIPTION	CORE #U308					
FROM	TO		SPL. NO.	FROM	TO	WIDTH	OZ. GRADE	AV. GRADE
0	9	ALT. SYENITIC MAT. - Some Coarse Grained Hornblende Mica						
9	11	Fine Grained Basic (DYKE?)						
11	24	Highly ALT. SYENITE- with considerable Hornblende in large Crystals.	1744	14	15	1'		
24	40	ALT. DIORITE -- With AB. of Lime. - Cons. Basic Inc. Hornblende Mica etc.						



U.S.P. - 4000

PROPERTY NU-WORLD

HOLE No. 2

SHEET No. \_\_\_\_\_

FOOTAGE		DESCRIPTION	CORE #U308					
FROM	TO		SPL. NO.	FROM	TO	WIDTH	OZ. GRADE	AV. GRADE
0	2	2' of Coarse Limey Mat.						
2	6	Coarse Hi.-- ALT. SYENITIC						
6	17	PEGMATIZED SYENITE with Typical Coarsely Crystallized ..... Structure.	1742	10'	11.5'	1.5'		
17	35.5	Peg. Syenite.						
35.5	39	Coarsely Crystallized Structure Syenite Mottled Apd.						
39	45	Syenite Peg. Mix Coarse & Fine Grain.						

UNWANTED



U.S. GEOLOGICAL SURVEY

WASHINGTON, D.C.

EO 12423

100 E. of Hole  
No.1

N 10° W  
500

N.M.P.—H399

HOLE No. 3

PROPERTY NU-WORLD

SHEET No. \_\_\_\_\_

FOOTAGE		DESCRIPTION	CORE SUBS					
FROM	TO		SPL. NO.	FROM	TO	WIDTH	OZ. GRADE	AV. GRADE
0	15.5	<u>PEGMATIZED</u> SYENITIC MATERIAL COMPOSED OF HORNBLENDE CRYSTALS. CONS MICA. FELDSPARS & CALCITE.						
15.5	40	DIOFITE in APP. but has CONS. LINE & Short Sections of MICACEOUS MAT. -	1743	23'	24.5'	1.5'		

PROPERTY NU-WORLD

HOLE No. 4

SHEET No. 1

FOOTAGE		DESCRIPTION	CORE #U308					
FROM	TO		SPL. NO.	FROM	TO	WIDTH	OZ. GRADE	AV. GRADE
0	2	COARSE GRAINED CONS. MICA. & ACTIVITY (DAFR)						
2	8.5'	LITE COLORED LIMY / MICACEOUS ROCK WITH CONS. HORNBLENDE IN PLACES	1749	0	2	2'	.013	
8.5	17	FINE GRAINED LITE COLORED METAMORPHOSED.						
17	31	GREENISH COLORED (BASK) DIORITIC PHASE						
31	40	MIXTURE OF DIORITE & LITE COLORED ROCK / LIMY DENCE - (VERY LITTLE MICA)						

260' E of HOLE  
No.1

N 10° W  
50°

N.M.P.—H399

HOLE No. 5

PROPERTY NU-WORLD

SHEET No. \_\_\_\_\_

FOOTAGE		DESCRIPTION	CORE					
FROM	TO		SPL. NO.	FROM	TO	WIDTH	OZ. GRADE	AV. GRADE
0	14	SYENITIC MAT. MED. GRAIN 2' GROUND CORE	1745	5	6	1'		
14'	42'	MIXTURE OF HIGH LIMEY ROCK WITH SOME INC. & SECTIONS OF AMPHIBOLITE SCHIST						

250' E of Hole  
No.1

N 10° W  
50°

N.M.P.—H399

HOLE No. 6

PROPERTY NU-WORLD

SHEET No. \_\_\_\_\_

FOOTAGE		DESCRIPTION	CORE					
FROM	TO		SPL. NO.	FROM	TO	WIDTH	OZ. GRADE	AV. GRADE
0	41	FINE GRAINED DENSE ALT. ROCK WITH HIGH LIME CONTENT.-- AT 32' -- $\frac{1}{2}$ " STRNGR OF PYRRHDTITE & 2" of SOLID <u>CALCITE</u>						



300' E of Hole  
No.1

N 10° W  
50°

N.M.P.—H300

HOLE No. 7

PROPERTY NU-WORLD

SHEET No. \_\_\_\_\_

FOOTAGE		DESCRIPTION	CORE <sup>U308</sup>					
FROM	TO		SPL. NO.	FROM	TO	WIDTH	OZ. GRADE	AV. GRADE
0	8.5	MED. GR DIORITE	1748	0'	1.5'	.01		
8.5	10	LITE COLORED LIMY MAT.						
10	12.5	GROUND CORE						
12.5	18	LITE COLORED LIMY MAT. AT 16.5 - 8" SOLID CACCZ.						
18	44	LIMESTONE --- <u>INC.</u> OF --- MICA FERROMASS.						

350' E of Hole  
No.1

N 10° W  
50°

N.M.P.—H388

HOLE No. 8

PROPERTY NU-WORLD

SHEET No. \_\_\_\_\_

FOOTAGE		DESCRIPTION	CORE #U308					
FROM	TO		SPL. NO.	FROM	TO	WIDTH	OZ. GRADE	AV. GRADE
0	23	HIGHLY ALT. PEGMATIZED SYENITE WITH LARGE H.B. CRYSTALS.	1747	9	10	1'	TR.	
23	40	DIOPIRE WITH CONS LIME & SPLOTCHES OF <u>BASIC INC.</u>						

400' E of HOLE  
No.1

N 10°W  
50°

N.M.P.-4399

PROPERTY NU-WORLD

HOLE No. 9

SHEET No. \_\_\_\_\_

FOOTAGE		DESCRIPTION	CORE					
FROM	TO		SPL. NO.	FROM	TO	WIDTH	OZ. GRADE	AV. GRADE
0	11	LINEY / ALT. DIORITE	1746	5	6.2	1.2'	.012	
11	40	ALT. WYENIE MATERIAL <u>MED. GRAIN</u>						

N.M.P.—H399

E. of Hole #1  
~~400' E of HOLE No. 1~~  
~~50' " " " "~~  
 S of Hole #9  
 N 10° W  
 50°

PROPERTY NU-WORLD

HOLE No. 10

SHEET No. \_\_\_\_\_

FOOTAGE		DESCRIPTION	CORE					
FROM	TO		SPL. NO.	FROM	TO	WIDTH	OZ. GRADE	AV. GRADE
0	19	HIGHLY ALT. fragmental <u>SYENITIC MAT.</u> <u>2' Ground Core</u> at 3'-5'						
19	47	HIGHLY MICACEOUS ALT. <u>PEG</u> Syenite . 23' - 25' Ground Core 45' - 47' ( 2' ground core)	1750	0	1.2	12	TR	