



31E01SE0162 18 MONMOUTH

010

Diamond Drilling

Township of Monmouth

Report No: 18

Work performed by: Molybdenum Corp. of America /
New Far North Exploration Ltd.

Claim No	Hole No	Footage	Date	Note
EO 31767	Z-2-1	330'	Sept./65	(1)
	Z-2-2	263'	Sept./65	(1)
	Z-2-2A	255'	Sept./65	(1)
	Z-2-4	260.8'	Oct./65	(1)
	Z-2-5	354'	Oct./65	(1)
	Z-2-6	237'	Oct./65	(1)
	Z-2-7	72.4'	Oct./65	(1)
	Z-2-8	53'	Oct./65	(1)
	Z-2-9	51.6'	Oct./65	(1)
	Z-2-10	155.6'	Oct./65	(1)
	Z-2-11	177'	Oct./65	(1)
	Z-2-12	68.8'	Oct./65	(1)
EO 31517	Z-2-3	438'	Sept./65	(1)

1715.2

Notes:

(1) 34/70 (Sam Taylor)

DIAMOND DRILL RECORD

PROPERTY N.F.N. HOLE NO. D.D.H. Z-2-2-A DIP 30° LOCATION ZONE-2 Monmouth Twp. SHEET NO. 1
New Fair North Exp. Ltd. Wilber Force ONT. CI. 31767

LOG		
FROM	TO	DESCRIPTION
0.0	5.5	Casing
5.5	23.5	Diopside (80%) with calcite (albite?) pyrite - Banding: 50°. Some moly observed.
23.5	26.2	Diopside (albite?)
26.2	49.0	Diopside 50% calcite 40% (albite?) plus pyrite-pyrrhotite with pink crystalline limestone from 29.0 - 29.4 40.6 - 41.2 41.6 - 41.9 44.5 - 45.6 45.8 - 46.3 47.1 - 49.0 Very few moly flakes.
49.0	69.3	Massive fine-grained diopside (albite) calcite with 2 narrow crystalline limestone sections ^{some} moly flakes at .65.3
69.3	70.8	Granit dike with diopside patches, some moly in the diopside patches (at 70.4°) contact rock at 60°.
70.8	81.6	Crystalline limestone (white) with pyrite-pyrrhotite-graphite-muscovite, moly flakes at 79.6

ASSAYS						
SAMPLE No.	FROM	TO	WIDTH	VALUES		
				g	kg	lb
2-2-1	5.5	9.5	4.0	Trace		
2-2-2	9.5	11.7	2.2	0.05		
2-2-3	11.7	17.0	5.3	Trace		
2-2-4	17.0	19.0	2.0	0.07		
2-2-5	19.0	23.5	4.5	0.225		
2-2-6	23.5	30.0	6.5	Trace		
2-2-7	30.0	45.0	15.0	Trace		
2-2-7A	45.0	50.0	5.0	0.025		
2-2-29	50.0	55.0	5.0	Trace		
2-2-30	55.0	60.0	5.0	Trace		
2-2-31	60.0	65.0	5.0	Trace		
2-2-32	65.0	69.0	4.0	Trace		
2-2-33	69.0	71.0	2.0	Trace		
2-2-34	71.0	75.0	4.0	nil		
2-2-35	75.0	81.6	6.5	Trace		

LEGEND

Collar Lat. Dep.

Collar Elevation

Azimuth at Start 249°

Azimuth at End

DIPS:

35° Ft. 0.0 Ft. 255°

..... Ft. Ft.

..... Ft. Ft.

..... Ft. Ft.

Logged By

Sampling By

Assaying By

SCALE inch

SECTIONS			
Started	Completed	Depth of Hole	Pr. used Depth
<i>Sledge Assays</i>	<i>0.11052</i>		
15 -	20	0.175	<i>But sledge samples taken 5 ft. continuous intersections.</i>
20 -	25	0.03	
25 -	45	Trace	
45 -	58	0.04	
55 -	60	0.02	
60 -	65	Trace	
65 -	70	0.02	
70 -	80	Trace	
80 -	85	0.15	
85 -	90	0.10	
90 -	95	0.135	
95 -	100	0.04	
100 -	105	0.03	

MOLYBDENUM CORPORATION of AMERICA
 OKA, P.Q.
 CANADA

DIAMOND DRILL RECORD

PROPERTY N.F.N. HOLE NO. D.D.H. Z-2-2-A DIP 30° LOCATION ZONE-2 Manmouth Twp. SHEET NO. 2
New Fair North Exp. Ltd. Wilberforce, ONT. Cl. B1767

LOG		
FROM	TO	DESCRIPTION
81.6	91.2	Medium grained diopside (albite?) rock with some crystalline calcite veinlets 2% sulphides (pyrite-pyrrhotite)
91.2	100.4	Coarse grained pink to white limestone with pyrite-pyrrhotite apatite?. Some moly.
100.4	125.0	White crystalline limestone with pyrite-pyrrhotite (1%) muscovite-graphite. Banding: 45° - 55° at 101.0 a brown mineral to be indified at 121.6 a black " " "
125.0	141.2	White crystalline limestone with graphite-pyrite-pyrrhotite. The graphite flakes and the light banding at between 40° - 60°
141.2	145.6	Medium grained diopside (albite?) calcite, some moly.
145.6	157.3	White crystalline limestone with pyrite-pyrrhotite graphite.
157.3	171.8	White crystalline limestone with diopside 20% - 40%. Some sections are pure white crystalline limestone, some are pure pink crystalline limestone.

ASSAYS					
SAMPLE No.	FROM	TO	WIDTH	VALUES	
				%	
Z-2-8	81.6	85.0	3.4	0.225	
Z-2-9	85.0	91.2	6.2	0.20	
Z-2-10	91.2	96.0	4.8	0.35	
Z-2-3b	96.0	100.0	4.0	nil	
Z-2-11	110.0	115.0	5.0	nil	
Z-2-12	141.2	145.0	3.8	Trace	

LEGEND	
<input type="checkbox"/> <input type="checkbox"/> <input type="checkbox"/> <input type="checkbox"/> <input type="checkbox"/> <input type="checkbox"/> <input type="checkbox"/> <input type="checkbox"/>	Collar Lat. Dep. Collar Elevation Azimuth of Start <u>249°</u> Azimuth of End DIPS: <u>35°</u> Ft. 0' Ft. 255.0' Ft. Ft. Ft. Logged By Sampling By Assaying By

SCALE Inch

SECTIONS			
Started	Completed	Depth of Hole	Pro. used Depth
<i>Sledge Assays</i>	% MoS ₂		
80 - 85	0.15		<i>Auto Sledge samples taken off. Contiguous intersections.</i>
85 - 90	0.10		
90 - 95	0.135		
95 - 100	0.04		
100 - 105	0.03		
105 - 120	Trace		
120 - 135	nil		
135 - 155	Trace		
155 - 216	no samples		

MOLYBDENUM CORPORATION OF AMERICA
 OKA, P.Q. CANADA

DIAMOND DRILL RECORD

PROPERTY N. F. N. HOLE NO. Z-2-3 DIP 35° LOCATION ZONE-2 Monmouth Twp. SHEET NO. 1
New Fair North Exp. Ltd. Wilberforce Ont.
C.I. 31767

LOG		
FROM	TO	DESCRIPTION
0	15.0	Casing (0'-4" soft - 4"-18" decomposed)
15.0	20.0	Diopside 18" to 19" decomposed - 1 foot recovered
20.0	25.0	Diopside rich biotite schist
25.0	30.0	Biotite gneiss
30.0	33.5	Biotite gneiss & schist
33.5	41.0	Diopside rich biotite gneiss & schist with bands of pyroxene (diopside)
41.0	47.0	Granite
47.0	60.0	Diopside with bands of granite gneiss from 2" to 1."
60.0	81.3	Biotite gneiss with narrow bands of mica schist (diopside) & pyroxene
81.3	98.2	White crystalline limestone with muscovite (up to 30%) some diopside
98.2	106.5	Mixture of diopside-limestone zones coarse grained zone from 103.0-105.0
106.5	112.7	Grey granite dyke
112.7	117.3	Alteration zone (chloritized) in the contact between the limestone and the granite (contact C.B. 75°)
117.3	147.5	Mostly "light pink" crystalline limestone with some diopside and muscovite.

ASSAYS					
SAMPLE No.	FROM	TO	WIDTH	VALUES	
				M.S.	%
Z-2-40	15.0	20.0	5.0	0.04	
Z-2-49	20.0	25.0	5.0	0.035	
Z-2-50	25.0	30.0	5.0	0.02	
Z-2-51	30.0	33.5	3.5	0.04	
Z-2-52	33.5	41.0	7.5	Trace	
Z-2-53	41.0	47.0	6.0	0.04	
Z-2-54	47.0	55.2	8.2	Trace	

LEGEND	
<input type="checkbox"/> <input type="checkbox"/> <input type="checkbox"/> <input type="checkbox"/> <input type="checkbox"/> <input type="checkbox"/> <input type="checkbox"/> <input type="checkbox"/> <input type="checkbox"/> <input type="checkbox"/>	Collar Lat. Dep. Collar Elevation Azimuth at Start <u>249°</u> Azimuth at End DIPS: <u>35°</u> Ft. <u>438.0</u> Ft. Ft. Ft. Ft. Ft. Ft. Ft. Logged By Sampling By Assaying By

SECTIONS			
Started	Completed	Depth of Hole	Proposed Depth
Sludge Assays % MoS ₂			
20 - 25	0.04	Auto sludge sampler takes 5 ft. Contiguous intersections.	
25 - 35	0.04		
35 - 40	0.02		
40 - 45	Trace		
45 - 65	nil		
65 - 85	Trace		
85 - 105	nil		
105 - 118	Trace		
115 - 135	nil		
135 - 140	Trace		
140 - 145	nil		
145 - 150	Trace		

NORTHERN MINER FORM NO. 504

MOLYBDENUM CORPORATION OF AMERICA
 OKA, P.Q.
 CANADA

DIAMOND DRILL RECORD

PROPERTY N.F.N. HOLE NO. Z-2-3 DIP 35° LOCATION ZONE-2 Monmouth Twp. SHEET NO. 2
 New Fair North Exp. Ltd. Wilberforce, ONT. Cl. 81767

LOG		
FROM	TO	DESCRIPTION
147.5	173.2	Diopside - limestone rock with epidote & pyrrhotite (2%) Pink crystalline limestone from: 159.5 - 161.3 164.0 - 166.6
173.2	178.5	White crystalline limestone with 10% diopside and 20% muscovite.
178.5	203.3	White crystalline limestone with graphite and muscovite.
203.0	204.1	Rich biotite zone.
204.1	213.0	Mixture of diopside - limestone 50% - 50%
213.0	213.3	Granite dyke.
213.3	226.3	White crystalline limestone + muscovite
226.3	241.0	Grey granite with some diopside (narrow) sections.
241.0	259.0	White crystalline limestone with sections of diopside - limestone.
259.0	438.0	Biotite quartz. The banding is running from 45° to 60°

ASSAYS						
SAMPLE No.	FROM	TO	WIDTH	VALUES		
				MoS ₂		
Z-2-37	147.5	151.0	3.5	Trace		
Z-2-38	151.0	159.5	8.5	0.07		
Z-2-39	159.5	161.3	1.7	0.12		
Z-2-40	161.3	164.0	2.8	0.09		
Z-2-41	164.0	166.5	2.5	0.32		
Z-2-42	166.5	170.5	4.0	0.08		
Z-2-43	170.5	173.2	2.7	0.18		
Z-2-44	173.2	175.0	1.8	Trace		

LEGEND	
<input type="checkbox"/> <input type="checkbox"/> <input type="checkbox"/> <input type="checkbox"/> <input type="checkbox"/> <input type="checkbox"/> <input type="checkbox"/> <input type="checkbox"/> <input type="checkbox"/> <input type="checkbox"/>	Collar Lat. Dep. Collar Elevation Azimuth at Start <u>249°</u> Azimuth at End DIPS: <u>35°</u> Ft. <u>0</u> Ft. <u>438.0</u> Ft. Ft. Ft. Logged By Sampling By Assaying By SCALE Inch

SECTIONS			
Started	Completed	Depth of Hole	Processed Depth
Sludge Core	% MoS ₂		
145 - 150	Trace		Auto Sludge samples taken 5 ft.
150 - 155	0.04		Contiguous intersections
155 - 160	0.06		
160 - 165	0.075		
165 - 170	0.14		
170 - 175	0.06		
175 - 195	Trace		
195 - 200	nil		
200 - 205	Trace		
205 - 210	nil		
210 - 215	0.04		
215 - 220	Trace		
220 - 225	nil		
225 - 250	Trace		
250 - 255	0.02		
255 - 345	Trace		
345 - 350	0.03		
350 - 390	Trace		
390 - 395	0.04		
395 - 440	Trace		

MOLYBDENUM CORPORATION OF AMERICA
 OKA, P.Q.
 CANADA

Dudley Twp. (M-84)

THE TOWNSHIP
OF
MONMOUTH
COUNTY OF
HALIBURTON

EASTERN ONTARIO
MINING DIVISION

SCALE: 1-INCH = 40 CHAINS

LEGEND

- | | |
|-----------------------|----------|
| PATENTED LAND | (P) |
| CROWN LAND SALE | (CS) |
| LEASES | (L) |
| LOCATED LAND | (LOC) |
| LICENSE OF OCCUPATION | (L.O.) |
| MINING RIGHTS ONLY | (M.R.O.) |
| SURFACE RIGHTS ONLY | (S.R.O.) |
| ROADS | (—) |
| IMPROVED ROADS | (—) |
| KINGS HIGHWAYS | (—) |
| RAILWAYS | (—) |
| POWER LINES | (—) |
| MARSH OR MUSKEG | (—) |
| MINES | (—) |

NOTES

This Map Is Not To Be Used
FOR SURVEY PURPOSES—

400' Surface rights reservation around all lakes and rivers.

Original shoreline shown thus: (—)
F.R.I. shoreline shown thus: (—)
Patents Map shoreline shown thus: (—)

For status of summer resort locations shown thus: (—)
Please contact Dept. of Lands & Forests.

ONT. DEPT. OF MINES
MINING LANDS BR.
THIS MAP FOR CHECKING
PURPOSES ONLY — MUST
NOT BE SOLD.

DATE OF ISSUE
JUL 24 1968
ONTARIO DEPT. OF MINES

PLAN NO.-M.164

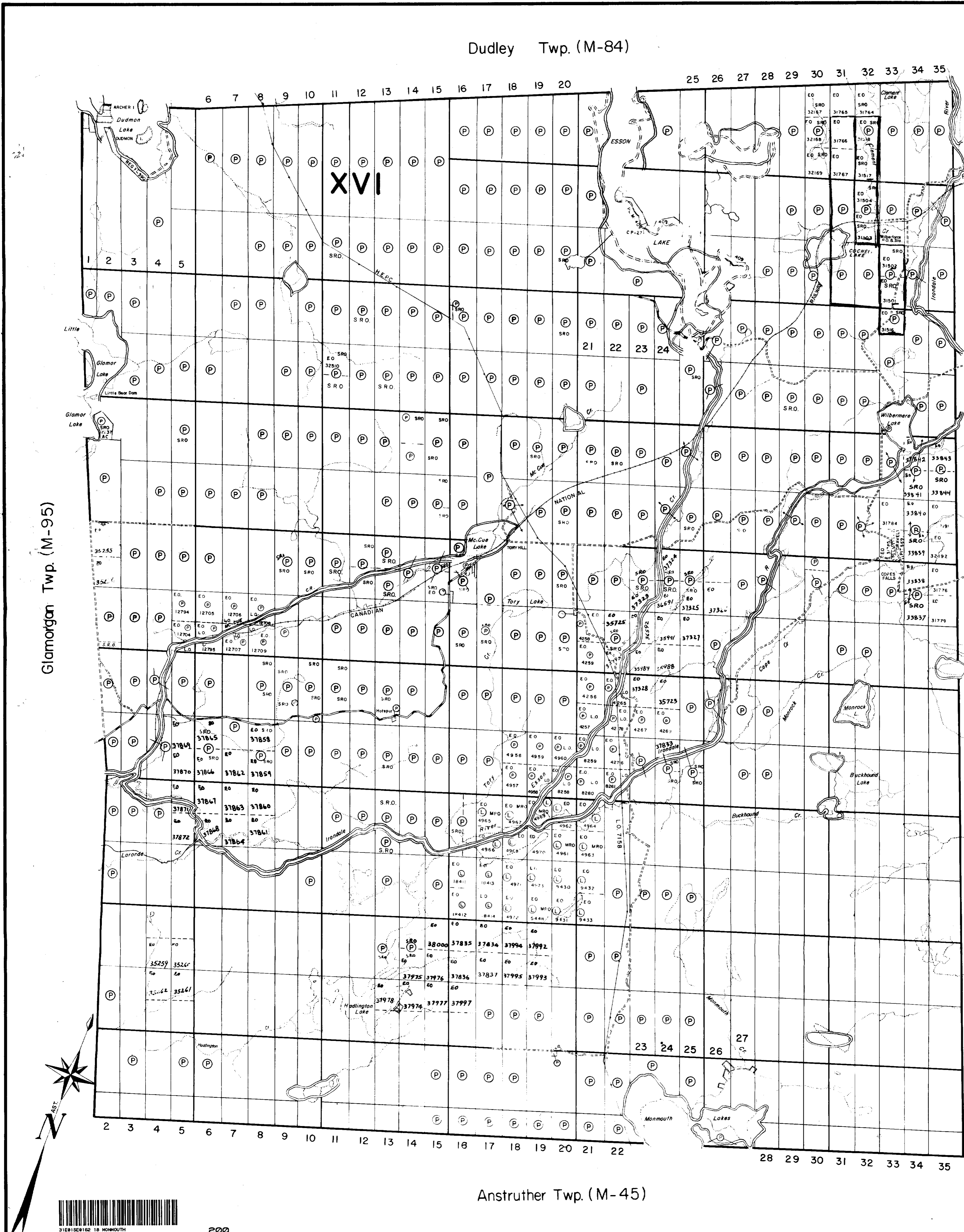
DEPARTMENT OF MINES
— ONTARIO —

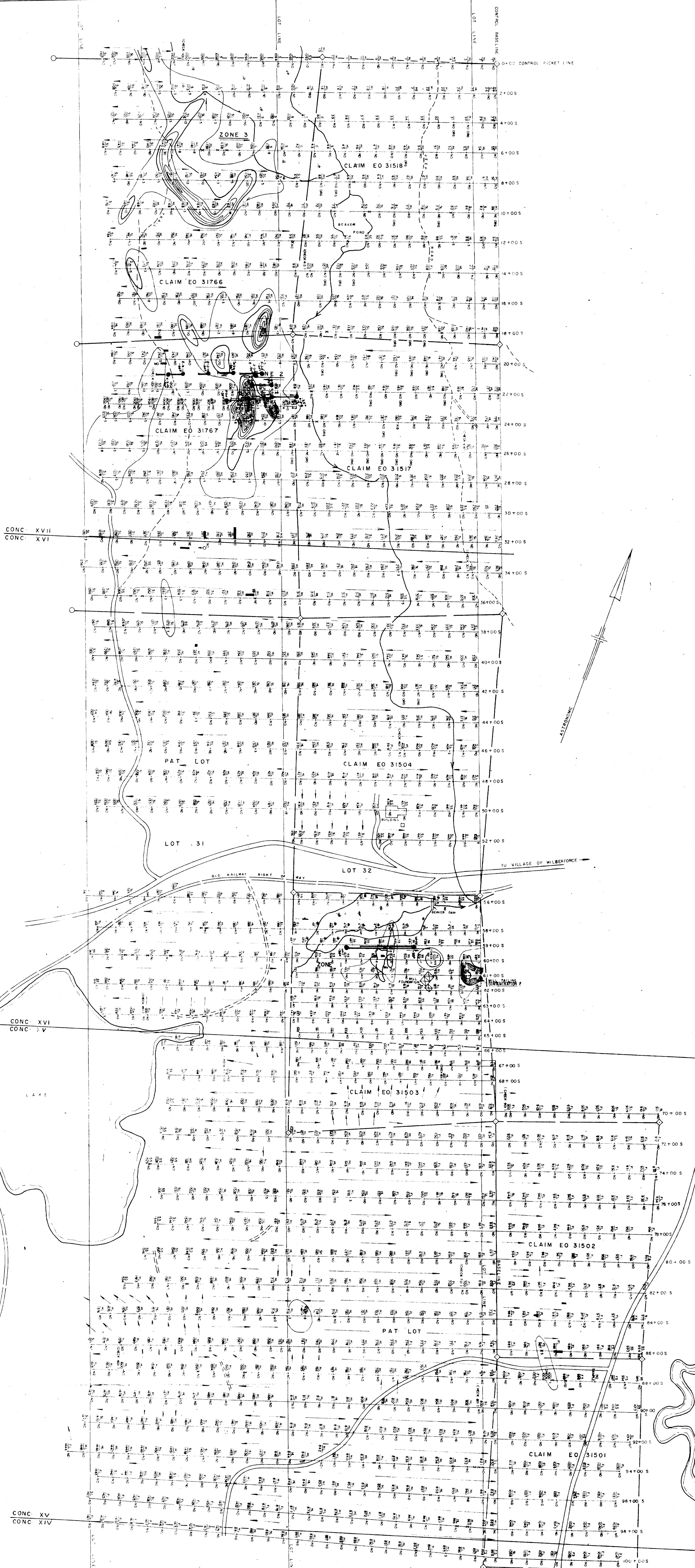
Glamorgan Twp. (M-95)

Cardiff Twp. (M-69)

Anstruther Twp. (M-45)

XVII
XVI
XV
XIV
XIII
XII
XI
X
IX
VIII
VII
VI
V
IV
III
II
I





- LEGEND**
- CLAIM POST LOCATED
 - CLAIM POST NOT LOCATED
 - ▣ TRENCH OR EMBANK. MO.
 - ⊠ PIT
 - ⊠ ROCK OUTCROP
 - ⊠ OLD FOUNDATION
 - ▭ BUILDING
 - DIRECTION OF DOWN SLOPE
 - ~ STREAM
 - ⊠ SWAMP AREA
 - ▨ GRAVEL ROAD
 - ▨ DIRT ROAD

- KEY TO PREFIXES**
- | | |
|---------------------|-------------|
| VEGETATION | SOIL |
| H HARDWOOD DOMINANT | L LOAM |
| S SOFTWOOD DOMINANT | C CLAY |
| M MIXED | S SAND |
| F FIELD CULTIVATION | H HUMUS |
| | R RESIDUAL |

CONTOUR KEY

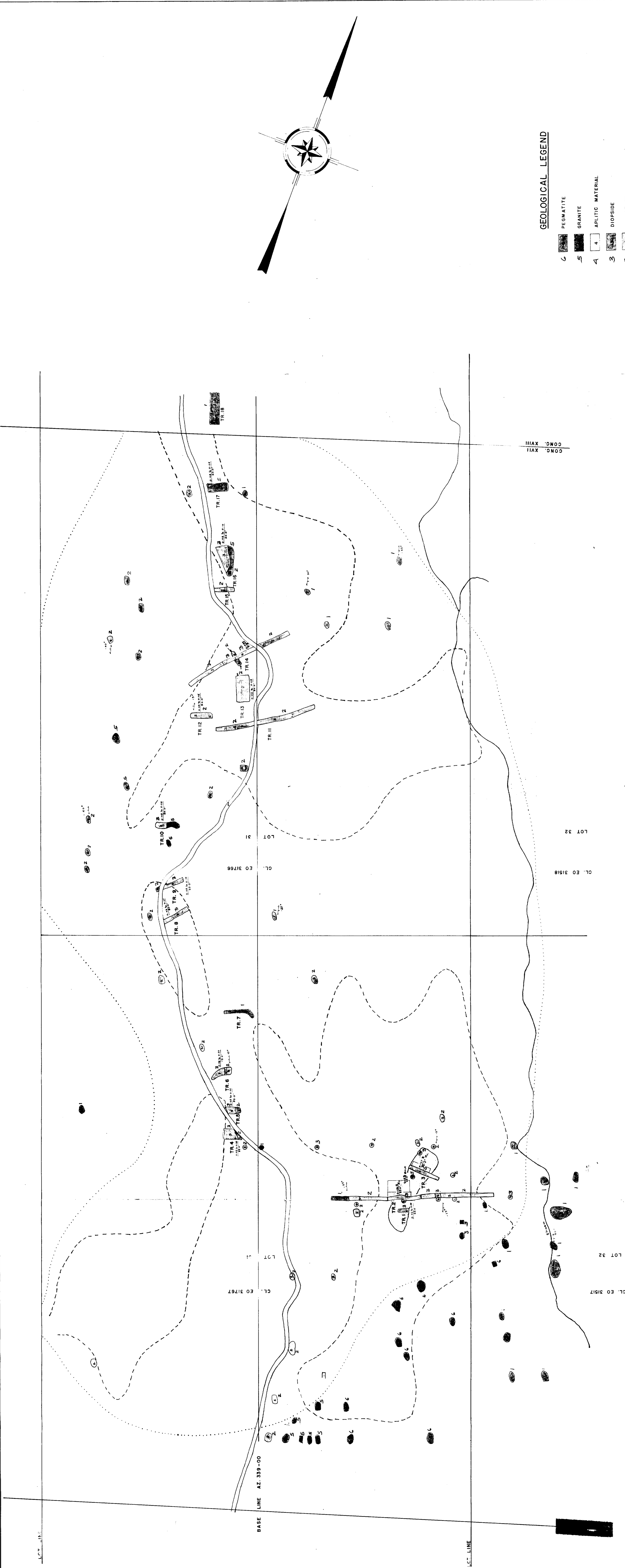
LOCATIONS 1965 DIAMOND DRILL HOLES

MOLYBDENUM CORP. OF AMERICA
 MONMOUTH TWP., ONTARIO
 PLAN OF SOIL SAMPLE RESULTS
 MOLYBDENUM in ppm
 LOTS 31, 32 & 33

DATE: AUG 1965	J.R. MOWAT	SAMPLED: A.L.	CHECKED:
SCALE: 1" = 200'	B. ASSOCIATES OTTAWA, CANADA	DRAWN: R.T. WILLIS	COMPILED: J.R.M.

210

NO - BACKGROUND VALUE (K5 TO 3 ppm)
 SUB - ANOMALOUS AREA 3 ppm - 10 ppm (ZONED)
 MINIMUM ANOMALOUS CONTOUR 10 ppm PLUS
 CONTOUR INTERVAL 10 ppm



GEOLOGICAL LEGEND

- 4 PEGMATITE
- 5 GRANITE
- 4 APLITIC MATERIAL
- 3 DIOPSIDE
- 2 LIMESTONE
- 1 PARAGNEISS

SYMBOLS

- BUSH ROAD
- OUTCROP
- TRENCH OR STRIPPED AREA
- D.D.H.
- ESTIMATED STRIKE AND DIP
- OUTLINE OF GEOCHEM ANOMALIES

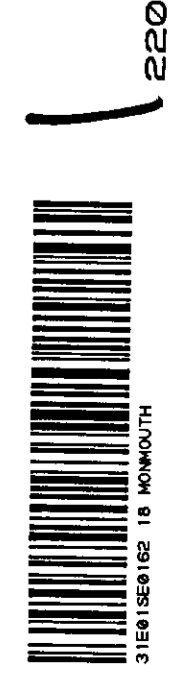
PROBABLE CRYSTALLINE LIMESTONE ZONE 0'-30' THICK WITH SOME
 SCATTERED GNESSIC BANDS CAPPING FLAT LYING MOLYBDENITE -
 BEARING DIOPSIDE 15'-60' THICK
 0.03% MOSS
 8.8' FOULAGE

MOLYBDENUM CORP. OF AMERICA
 PROPERTIES
 OF

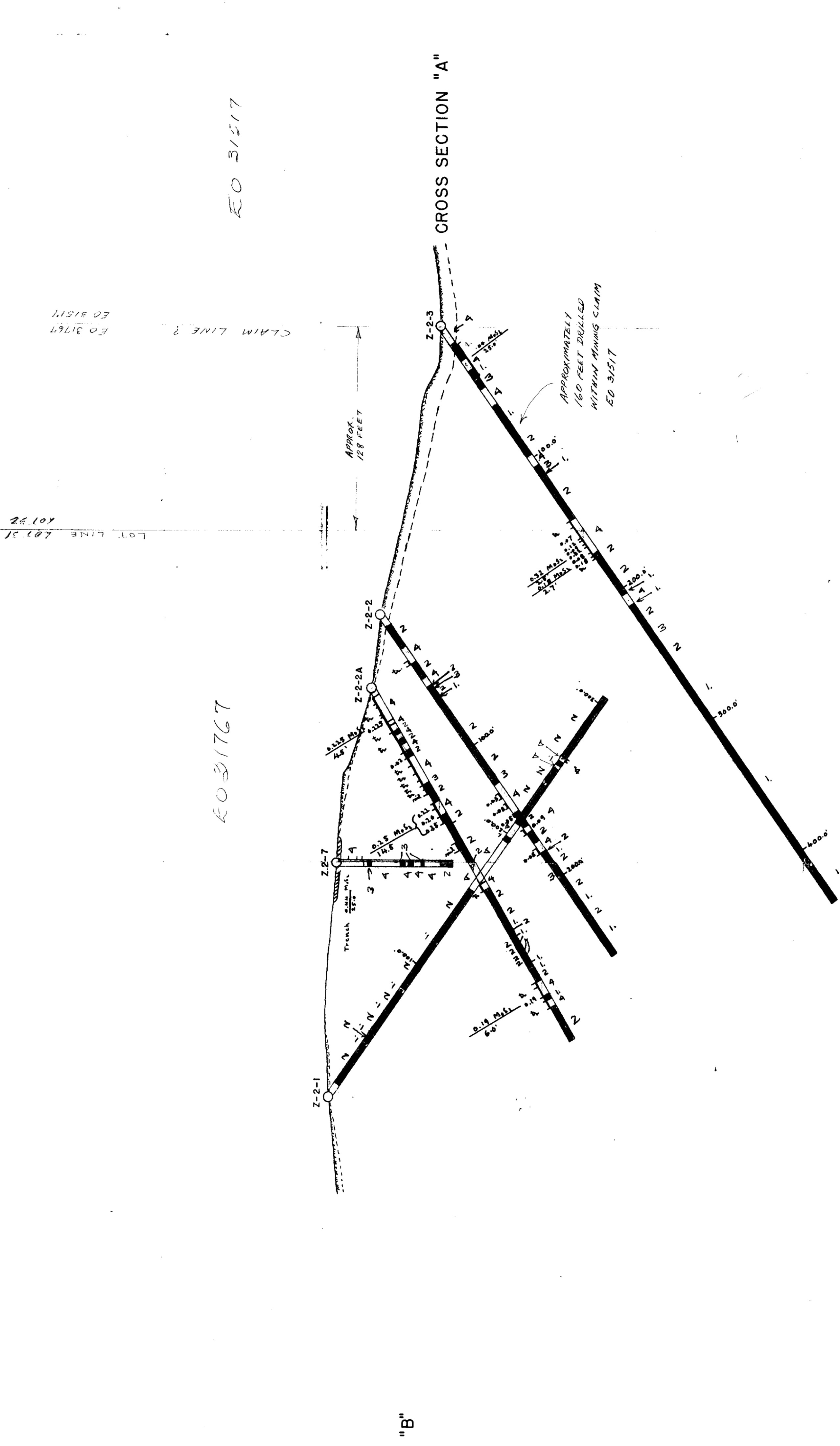
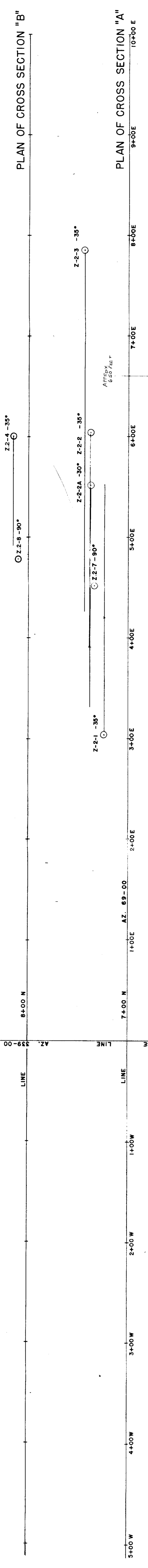
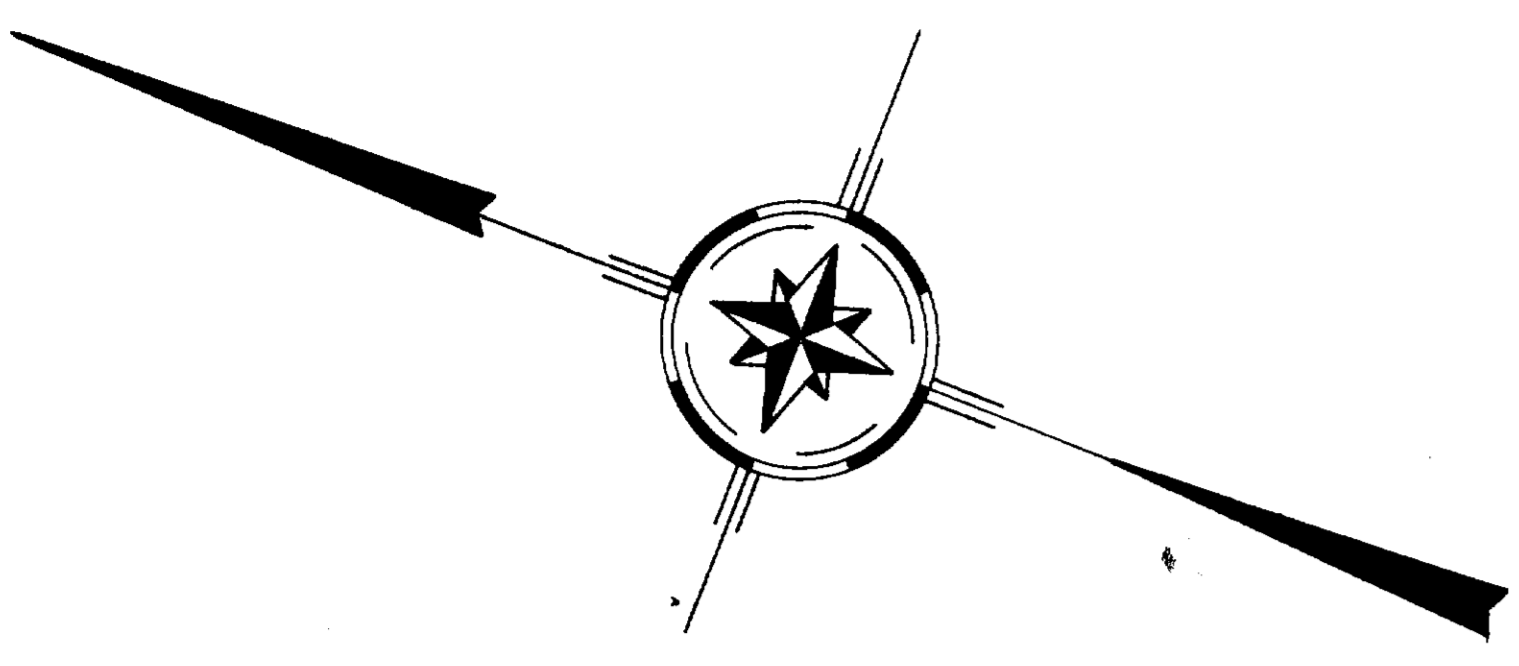
NEW FAR NORTH EXPLORATION LTD.

MONMOUTH TWP. HALIBURTON COUNTY, ONTARIO

SCALE 1" = 100' DEC. 1966



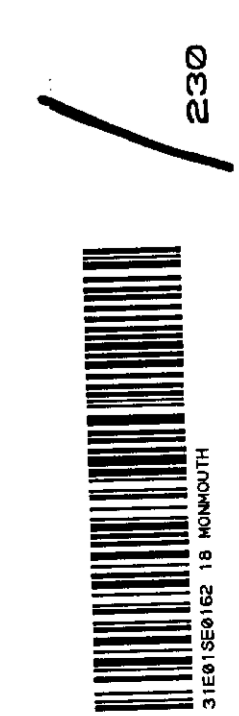
220



LEGEND

- INTRUSIVES**
- DIABASE
 - NEPHELINE SYENITE
 - NEPHELINE PEGMATITE
 - DIOPSIDE-ALBITE
 - GRANITE, GRANITE GNEISS
 - DIORITE, GABBRO
- SEDIMENTS**
- GRENVILLE LIMESTONE
 - BIOTITE OR HORNBLENDE GNEISSES
 - QUARTZITE

MOLYBDENUM CORP. OF AMERICA
 PROPERTIES
 OF
NEW FAR NORTH EXPLORATION LTD.
 MONMOUTH TWP. HALIBURTON COUNTY, ONTARIO
 SCALE 1" = 40' SEPT. 1965



(072, 5-115)

EO 317

1-15