



31E11NE2002 2.20573 BUTT

010

Compilation Report
On

Mining Claims

SO 1077365, SO 1077366, SO 1077367, SO 1077370

Butt Township

District Of Nipissing

Southern Ontario Mining Division

Submitted By:

Don K.D. Baxter, P.Eng.

Huntsville, Ontario

2 . 20573

EXECUTIVE SUMMARY

Vinecrest Management Services Limited holds four active mining claims in east central Butt Township, Kearney, Ontario. The claims cover a crystalline flake graphite occurrence, referred to as the McGuire East Zone.

A graphitic gneiss unit was identified along the north shore of McGuire Lake. The unit strikes northeast and dips east to southeast and was traced northeasterly along strike in Claims 1077366, 1077367, for 400 metres and across a width of 90 to 155 metres.

A considerable amount of work has been done on the claims. Mapping, Geophysics and diamond drilling have been undertaken by previous claim holders, and not reported.

The report serves to compile all previous, none reported work performed on the Vinecrest claim unit.

1. INTRODUCTION

This report, prepared for Vinecrest Management Services complies previously performed work within the boundaries of Mining Claims SO 1077365, SO 1077366, SO 1077367 and SO 1077370, Butt Township (Kearney), Ontario. The work included mapping, geophysics, and diamond drilling. The work has not been previously reported.

The report is submitted in compliance with the requirements for assessment work credits under the Mining Act of Ontario.

2. PROPERTY DESCRIPTION, LOCATION AND ACCESS

The claim group is located in the north-central part of the annulled portion of Butt Township, Ontario. Access to the property is via highway 518 east through Kearney Ontario to Forestry Tower Road. The site is at approximately the fourteen-kilometre point on Forestry Tower Road at the north shore of McGuire Lake.

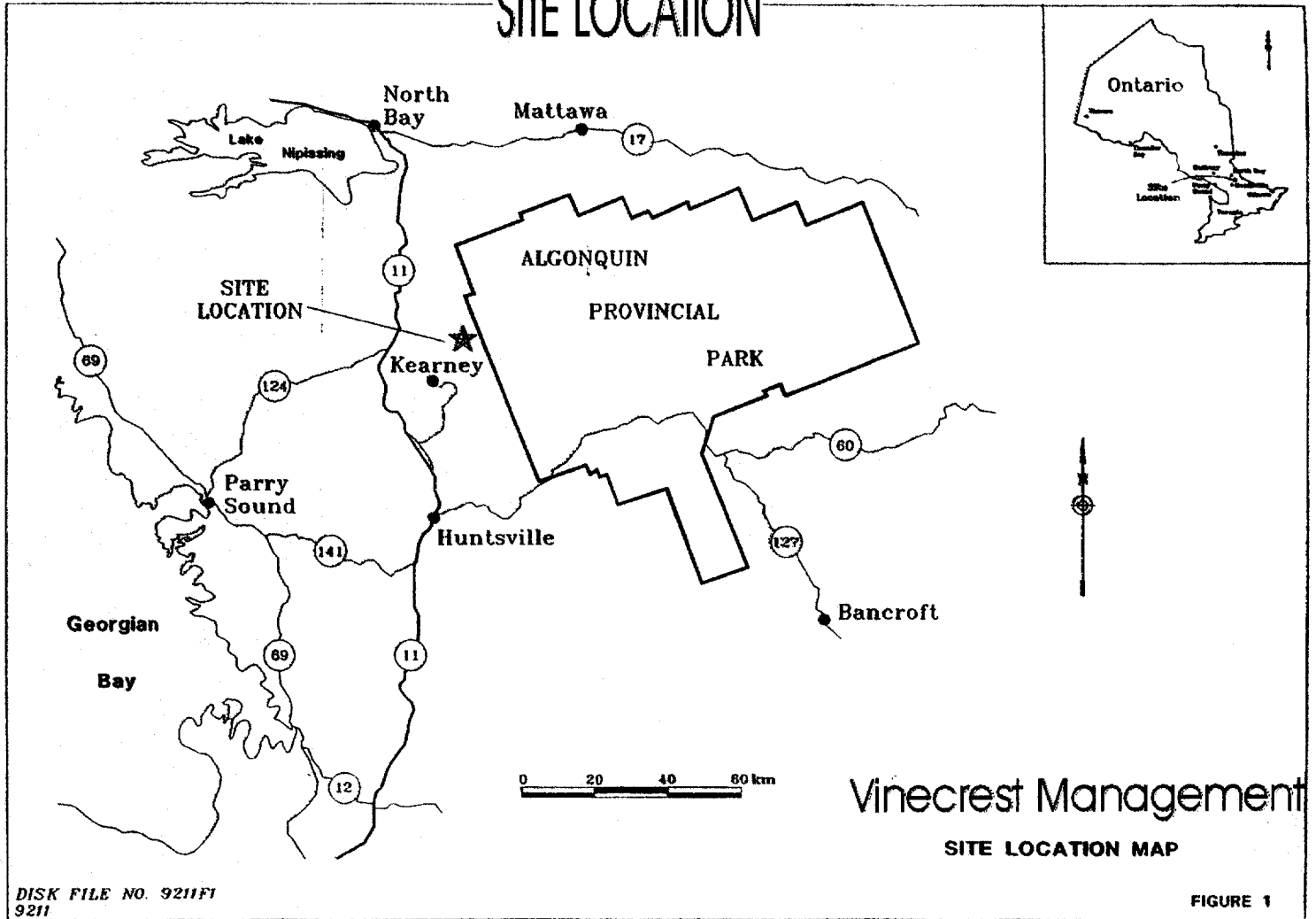
The topography of the claim group area is dominated by steep hillsides approximately 100 – 200 feet high, sharp valleys, and bogs. Overburden ranges from several metres in some low marsh areas, to a few centimetres. The low ground is covered by mixed bush, consisting of maple, birch, spruce, and alders. The tops of cliffs are covered with white pine. The high ground is covered with maple, and some birch.

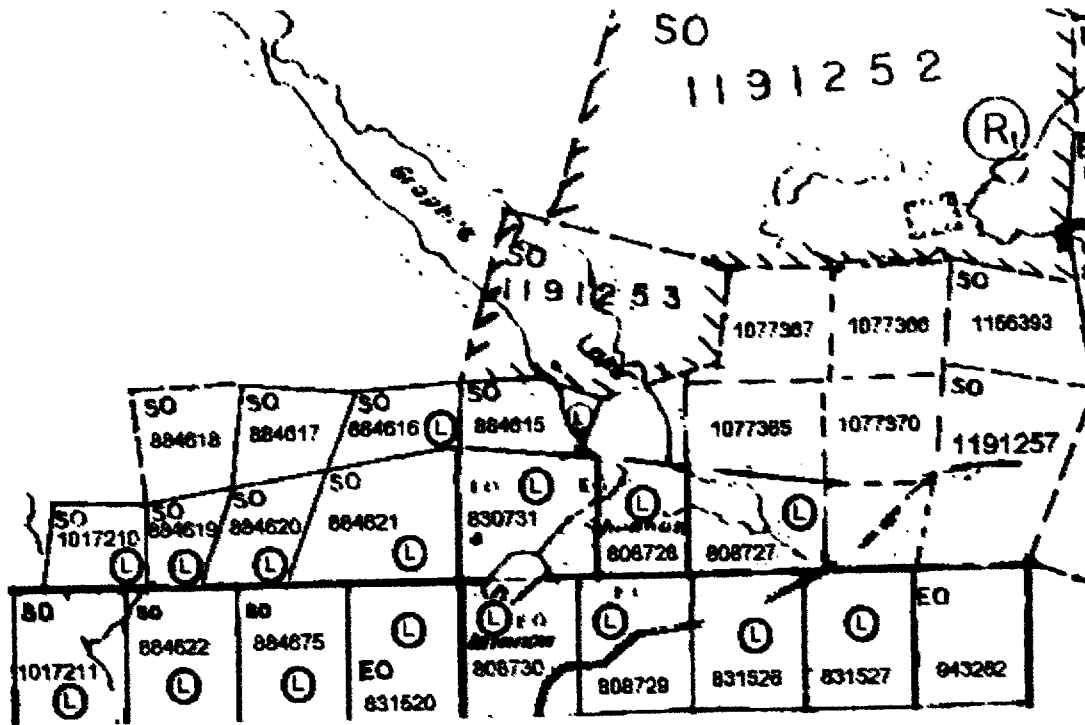
The claim group is directly adjacent to an open pit mine currently owned by International Graphite Inc. (IGI). The mine is currently idle, however IGI has indicated their intention to re-start operations.

3. GEOLOGY

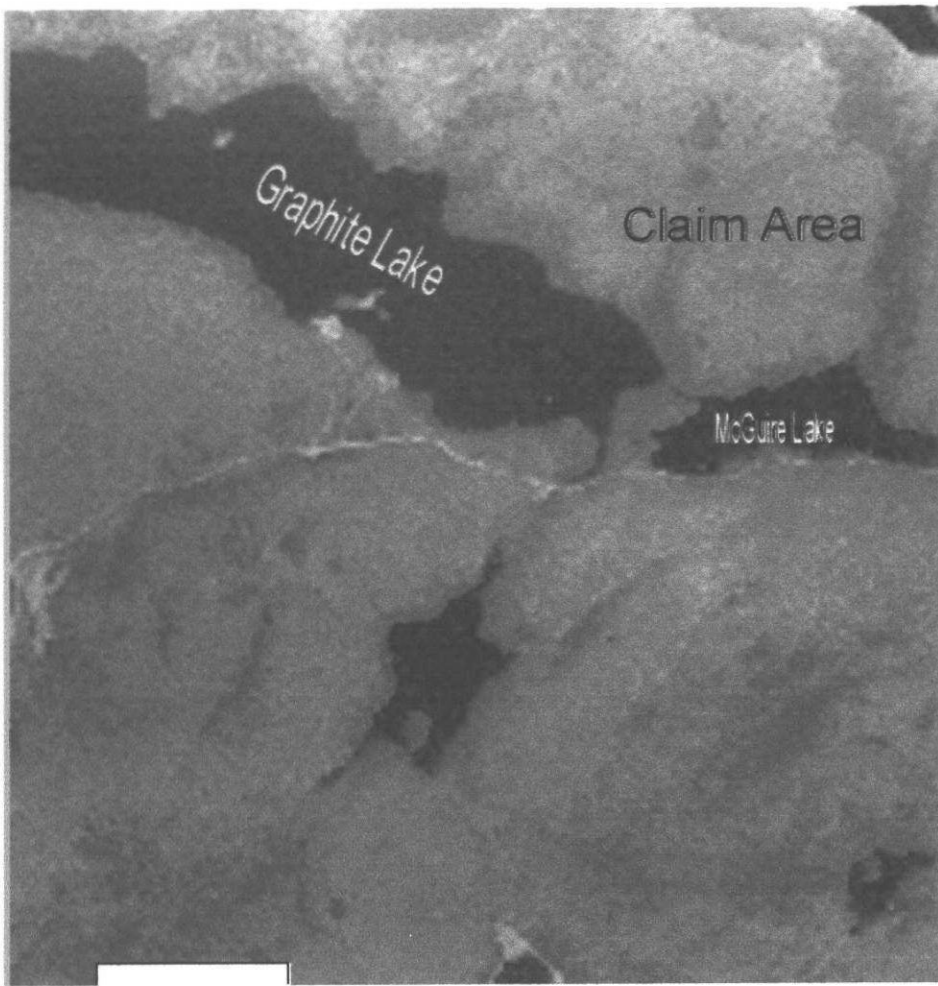
The Graphite deposit lies within the Grenville Structural Province of the Canadian Precambrian Shield. More specifically, it is located in the Perry Sound Domain, an assemblage of layered paragneiss and minor amounts of marble formed between 1,800 million to 2,500 years ago. Metamorphism has reached granulite facies and heat and pressure have transformed carbon into crystalline graphite flake – rich horizons. The deposit outcrops in moderately hilly topography and dips to the south east at approximately 40 degrees. The quartz-feldspar-crystalline graphite gneiss varies in thickness from 100 to 200 feet. The waste rock is a garnet-biotite-quartz-feldspar gneiss.

SITE LOCATION





CLAIM MAP: 1077365, 1077366, 1077367, 1077370



Aerial Photo Of Claim Area : Claims 1077365, 1077366, 1077367, 1077370
Butt Township, Southern Ontario Mining Division

4. PREVIOUS WORK

Noranda Exploration Co. Ltd performed an induced polarization survey in the area in 1975. The survey identified an anomalous I.P. zone extending for approximately 6200 feet in length. Although the survey touched on the Vinecrest claim group, it was mainly concentrated on the area to the south of the claim group. This report will concentrate on work performed during 1992 and 1993, as this was the most significant.

VLF SURVEY

A VLF Survey was conducted during the fall of 1992. The survey revealed an anomalous zone extending for a strike length of approximately 2000 feet. and a width of approximately 900 feet. As the claims to the south contain a drill proven graphitic zone, the VLF survey indicated an extension of the southern zone. The VLF survey provided drill targets for the fall 1999 diamond drilling program. Survey attached.

DIAMOND DRILLING

The VLF survey conducted during the fall of 1999 provided drill targets for a drilling program that commenced in October 1992. Eight diamond drill holes, totalling 3094 feet were completed by mid December 1992. Table one is a summary of the assay results from the East McGuire exploration program. Drill logs and sections attached.

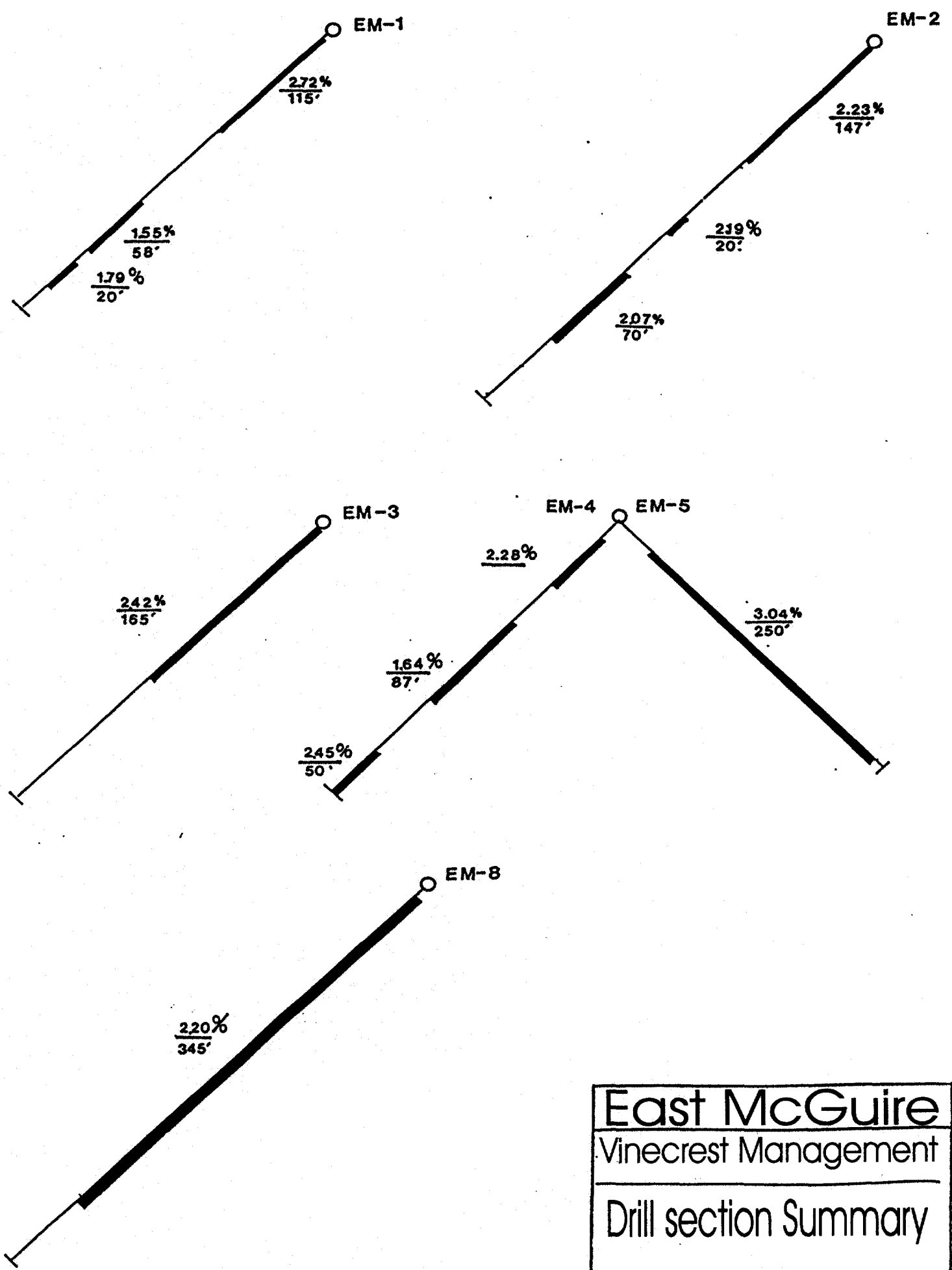
Graphitic mineralization in excess of 1.5% Cg with 60-70% medium to coarse flake was intersected over a strike length of 1100 feet. The width of the graphitic zone, as indicated from step-out hole EM-08, is approximately 600 feet. The estimated true thickness of the graphitic zone is 150 feet. The graphitic zone remains open along strike, across width and down dip.

Table One: Summary of the assay results from East McGuire exploration program

Drill Hole	From (ft)	To (ft)	Length (ft)	%Cg
EM-01	6.0	121.0	115.0	2.72%
	192.0	252.0	58.0	1.55%
	272.0	292.0	20.0	1.79%
EM-02	10.0	157.0	147.0	2.23%
	200.0	220.0	20.0	2.19%
	260.0	330.0	70.0	2.07%
	370.0	380.0	10.0	1.72%
EM-03	20.0	185.0	165.0	2.42%
EM-04	30.0	300.0	270.0	1.6%
EM-05	35.0	285.0	250.0	3.04%
EM-06	no sample	perimeter hole		
EM-07	no sample	perimeter hole		
EM-08	5.0	350.0	345.0	2.22%

Don K.D. Baxter, P.Eng., Mining Engineer

48-3 King William St. • Huntsville, Ontario • Canada , P1H 1G3 • Tel (705) 789-9706



East McGuire
Vinecrest Management
Drill section Summary

The writer conducted fieldwork on August 3rd and 4th 2000. The purpose of the work was to confirm diamond drilling performed in 1992. Diamond drill core is stored at the nearby International Graphite Mine site. The writer inspected the core and confirmed the attached drill logs. The drill logs were checked against the assay certificates that were sourced in the files. The writer also surveyed the claim area to confirm drill collars. Drill hole collars are located on the attached compilation map. Also included on the map are the VLF anomalies, the adjacent open pit mine owned by IGI and approximate claim boundaries. The map illustrates the continuity of the IGI ore zone.

5. ECONOMIC GEOLOGY

The Vinecrest Claim group contains a potentially economic flake graphite deposit. The exploration work carried out to date confirms that the graphite zone contained within the claim boundaries is an extension of the International Graphite deposit to the south (see compilation map). The flakes of Graphite are moderately to strongly oriented, and range in size from 1.0 to 3.0 mm (Menard/99). The coarseness of the flake is critical to the economic potential, as is the ability to liberate the flake from the matrix without it breaking. Assuming the extension, the compressive strength of the rock should be compatible with the IGI deposit, allowing for a high percentage of coarse flake recovery.

Insufficient drilling density exists to conduct proper tonnage estimation, but the drilling does prove an extension of the reserves to the south that strikes through the claim boundary (1077365). Therefore, it is possible to calculate a rough tonnage estimate. The drilling indicated a strike length of 1100 feet, 150 feet true thickness, and a width of 600 feet. Using the ore density of the IGI deposit (11.7 cubic feet /ton) the claims contain an approximate geologic inventory of 8.4 million tons grading at approximately 2.20% Cg. If the adjacent IGI mill were used to process the graphite ore the tonnage would translate into eight years of mining (this assumption can only be confirmed by additional drilling and mine design to determine a mineable tonnage).

6. RECOMMENDATIONS

The work performed on the claim group to date fully justifies a continued drilling program. The writer recommends a 21,000' program in 105 holes. At \$20.00 per foot the program would cost \$300,000.00.

7. CONCLUSIONS

The geoscientific evaluation of the Vinecrest claim group and surrounding area has revealed its excellent geologic context and favourable potential for economic graphite mineralization. Economic graphite grades were previously mined on the adjacent claim group leased by International Graphite.



DRILL LOGS
&
ASSAY CERTIFICATES

Cal Graphite Corporation

SECTIONS
11,600 E

Drill Hole Record : MLE-01.....

Property : McGUIRE LAKE EAST ZONE: CLAIM EO 831518

Latitude : 10.630.96 N Bearing : 300°

Started : October 26, 1992

Departure : 11.597.80 E Inclination : -45°

Completed : October 27, 1992

Elevation : 1164.05 Final Depth : 324.0'

Logged By : A. MENARD

INTERVAL		DESCRIPTION	SAMPLE					
From	To		No.	INTERVAL			% Cg	Flake Size
				From	To	Total		
0.0	6.0	<u>CASING</u>						
6.0	118.0	<u>GRAPHITE GNEISS</u> fin. fine-grained, quartz-feldspar graphite gneiss. Foliation @ 70-90° T.R.A.	001	6.0	16.0	10.0'	2.61	Mg-cg
			002	16.0	26.0	10.0'	1.64	Mg-cg
118.0	192.0	<u>Garnet Gneiss</u> Red, medium grained garnet-biotite gneiss	003	26.0	36.0	10.0'	2.60	Mg-cg
		143.0-148.0 graphite band 70° tea.	004	36.0	46.0	10.0'	2.22	Mg-cg
		148.0-192.0 garnet-quartz gneiss	005	46.0	56.0	10.0'	2.59	Mg
192.0	223.0	<u>Interlayered Quartz-Feldspar-Biotite Garnet-Graphite Gneiss</u>	006	56.0	66.0	10.0'	2.44	Mg
		Uniformly banded sequence @ 70% core axis 192.0-214.0'	007	66.0	76.0	10.0'	2.10	Mg-cg
		214.0-219.0 garnetiferous unit	008	76.0	86.0	10.0'	2.03	Cg
		219.0-223.0 as above 192.0-214.0'	009	86.0	96.0	10.0'	2.70	Cg
223.0	241.0	<u>Garnet Gneiss</u>	010	96.0	106.0	10.0'	3.19	Cg
		Garnet-quartz-biotite-feldspar gneiss with finely distributed graphite and sulphides	011	106.0	111.0	5.0'	2.72	13.6 Cg
			012	111.0	116.0	5.0'	1.45	2.25 Cg
241.0	286.0	<u>Interlayered Quartz-Feldspar-Biotite Garnet-Graphite</u>	013	116.0	121.0	5.0'	3.08	15.4 2.72 115.0
		241-248.0 interlayered sequence					2.13	
		248.0-253.0 massive garnet gneiss						
		253.0-269.0 interlayered graphite garnet gneiss	014	192.0	202.0	10.0'	2.51	Mg-cg
		269.0-277.0 garnet gneiss band	015	202.0	214.0	10.0'	1.53	10.3 ✓
		277.0-286.0 interlayered graphite- garnet gneiss	016	214.0	222.0	8.0'	1.03	3.24 ✓
286.0	324.0	<u>Garnet Gneiss</u>	017	222.0	232.0	10.0'	1.01	Mg
		Coarse-grained red. grey-garnet feldspar-biotite gneiss with minor <1% graphite	018	232.0	242.0	10.0	1.64	Mg
			019	242.0	252.0	10.0	1.48	8.94 1.55
			020	252.0	262.0	10.0	.48	fg
			021	262.0	272.0	10.0	.80	-
			022	272.0	282.0	10.0	1.79	Mg
			023	282.0	292.0	10.0	1.80	1.79 Mg
		END OF HOLE MLE-01 324.0'						

Drill Hole Record : MLE-02

Property : McGuire LAKE EAST : CLAIM EO 831518

Latitude : 10,403.02 N Bearing : 290°

Started : Oct 28, 1992

Departure : 11,261.36 E Inclination : 45°

Completed : October 29, 1992

Elevation : 1124.53 Final Depth : 415.0

Logged By : A.M.

INTERVAL		DESCRIPTION	SAMPLE					
From	To		No.	INTERVAL			%	Flake
				From	To	Total		
0.0	10.0	CASING						
10.0	157.0	<u>GRAPHITE GNEISS</u>						
		Grey, fine-medium grained, quartz, feldspar	024	10.0	20.0	10.0	2.47	Cg
		biotite-graphite greiss. <u>Thole side averages</u>	025	20.0	30.0	10.0	2.57	Cg
		± 1mm. Foliation measured @ 20° TCA	026	30.0	40.0	10.0	2.11	Cg
		69.0-73.0 interbanded garnet-graphite	027	40.0	50.0	10.0	2.21	Mg
		greiss @ 75° TCA	028	50.0	60.0	10.0	1.51	Mg
		92.0-94.0 garnet greiss band	029	60.0	70.0	10.0	2.48	Mg
		104.0-112.0 garnet-plagioclase, biotite	030	70.0	80.0	10.0	1.92	Mg
		Sulphide band @ 70° TCA	031	80.0	90.0	10.0	2.66	Mg
		140-143.0 garnet-quartz-feldspar	032	90.0	100.0	10.0	1.73	Fg-Mg
		graphite band @ 65° TCA	033	100.0	110.0	10.0	0.21	Fg-Mg
157.0	200.0	<u>GARNET GNEISS</u>	034	110.0	120.0	10.0	1.73	Fg-Mg
		Grey, fine-grained garnet-quartz	035	120.0	130.0	10.0	1.99	Mg
		hornblende biotite greiss with	036	130.0	140.0	10.0	2.86	Mg
		local 1.0' phases of graphitic	037	140.0	150.0	10.0	2.92	Mg 23
		metasomatism	038	150.0	157.0	7.0	3.46	328.3
200.0	219.0	<u>Graphite Greiss</u>						
		Fine to medium-grained siliceous-feldspar	039	200.0	210.0	10.0	3.18	Mg-Cg
		graphite greiss with marked decrease	040	210.0	220.0	10.0	1.20	Mg-Cg
		from above garnet unit (garnets < 10%)						
		In contact @ 40° TCA						
		218-219.0 sulphide-quartz filled						
		fracture @ 5° TCA 1cm width						
219.0	275.0	<u>Garnet GNEISS</u>						
		Banded, garnet greiss unit with	041	260.0	270.0	10.0	1.19	Fg-Mg
		frequent interlayers of graphitic	042	270.0	280.0	10.0	1.39	Fg-Mg
		metasomatism, 260-267.0 interlayered	043	280.0	290.0	10.0	2.53	Fg-Mg
		garnet-graphite greiss	044	290.0	300.0	10.0	2.10	Fg-Mg
275.0	334.0	<u>Graphite Greiss</u>	045	300.0	310.0	10.0	2.70	Fg-Mg
		Fine to medium grained graphitic unit	046	310.0	320.0	10.0	3.04	Cg
		@ 45° to 55° TCA	047	320.0	330.0	10.0	1.59	Cg
334.0	372.0	<u>Garnet Greiss</u>	048	330.0	340.0	10.0	7.09	Fg.
		Garnetiferous unit with quartz	049	370.0	380.0	10.0	1.72	Fg-Mg
		feldspar-biotite-graphite bands	050	380.0	390.0	10.0	0.95	Fg
		see over	051	390.0	400.0	10.0	0.33	Fg.

MLE-02

372-395.0 Biophte Gneiss
 Fine-grained, foliated, quartz-feldspar
 biotite-graphite gneiss In contact
 @ 30° TCA, Out contact 80° TCA

395.0-415.0 Garnet Gneiss
 Medium-grained garnet-quartz hornblende
 biotite gneiss

EOH
 415.0'

END OF HOLE MLE-02 415.0'

FROM	TO	LENGTH	%G ₂
10.0	- 157.0	147.0'	2.23 %
200.0	- 220.0	20.0'	2.19 %
260.0	- 330.0	70.0'	2.07 %
370.0	- 380.0	10.0'	1.72 %

Cal Graphite Corporation

Page 1 of

Drill Hole Record: MLE-03

SECTION
11, 100E

Property: McGuire Lake East CLAIM 808727

Latitude: 10.263.12 N Bearing: 300°

Started: October 29, 1992

Departure: 11,129.67 E Inclination: -45°

Completed: October 30, 1992

Elevation: 1113.38 Final Depth: 303.0

Logged By: A MENARD

INTERVAL		DESCRIPTION	SAMPLE					
From	To		No.	INTERVAL		% Cg	Flake Size	
				From	To			Total
0.0	20.0	CASING						
20.0	117.0	<u>GRAPHITE GNEISS</u> 6xy, medium-grained, quartz (30-40%) - plagioclase (20%) - biotite 5-10% - hornblende (5%) graphite gneiss. Foliation at 60° TCA Sulphides associated with flake graphite up to 5% along foliation planes. Graphite visually estimated @ ± 2-3% Cg.	052	20.0	30.0	10.0	2.90	
			053	30.0	40.0	10.0	2.33	
			054	40.0	50.0	10.0	3.04	
			055	50.0	60.0	10.0	2.50	
			056	60.0	70.0	10.0	1.86	
			057	70.0	80.0	10.0	2.28	
			058	80.0	90.0	10.0	2.89	
			059	90.0	100.0	10.0	2.78	
			060	100.0	110.0	10.0	2.13	
			061	110.0	120.0	10.0	2.35	
			062	120.0	130.0	10.0	2.15	
			063	130.0	140.0	10.0	2.49	
			064	140.0	150.0	10.0	1.95	
			065	150.0	160.0	10.0	1.91	
			066	160.0	170.0	10.0	2.89	
			067	170.0	180.0	10.0	2.33	
			068	180.0	185.0	5.0	2.58	12.9
			069	185.0	190.0	5.0	2.65	
117.0	125.0	<u>GARNET GNEISS</u> 6xy to greyish wh, weakly foliated garnet-quartz-biotite-hornblende gneiss In contact @ 45° TCA 104.0-104.2' near gorge with chloritic infilling and 1cm wide fracture over 3" @ 10° TCA - near disseminated graphite, very fine grained in local 1.0' sections 117.0-119.0 garnetiferous graphite band						
125.0	184.0	<u>GRAPHITE GNEISS</u> Fine to medium-grained, grey interbedded graphite gneiss and garnet-quartz-feldspar gneiss 125.0-141.0 interlayered graphite-garnet gneiss with ± 5% pyrite, feldspar garnet 143.0-154.0 finely banded (1cm) sequence of graphite-quartz-biotite-garnet gneiss 154.0-164.0 uniform graphite sequence 164.0-184.0 graphite-garnet gneiss with controlled layering @ 166-168.0' mainly @ 0°-5° to core axis - local 1-2.0' bands of garnet gneiss						
184.0	303.0	<u>DANIEL GNEISS</u> Medium-grained, quartz-garnet-biotite gneiss 20-30% quartz, 20% fine, red garnets, 25% fine biotite flakes @ 40° TCA 245-246 quartz band with cg biotite 247-251 " " @ 80° TCA						

Summary:

From	To	Length	%C
20.0	185.0	165.0	2.42

END OF HOLE MLE-03

Cal Graphite Corporation

Page 1 of 1

Drill Hole Record : MLE-04

SECTION
11,850E

Property : McGUIRE LAKE EAST ZONE CLAIM E0831518

Latitude : 10.762.44 N Bearing : 300°

Started : November 1, 1992

Departure : 11.847.43 E Inclination : -45°

Completed : November 2, 1992

Elevation : 1174.51 Final Depth : 307.3'

Logged By : A. MENARD

INTERVAL		DESCRIPTION	SAMPLE					
From	To		No.	INTERVAL			% Cg	Flake Size
				From	To	Total		
0.0	5.0	<u>CASING</u>						
5.0		<u>Quartz-feldspathic GNEISS</u> grey, fine to medium grained, quartz, feldspar, garnet gneiss @ 70° TCA (25.0')						
		33.0- 43.0 ^{58.3} graphitic gneiss, 1-2% Cg 70° TCA (33.0')	✓ D70	30.0	40.0	10.0	2.43 Mg	
		Fracture @ 0° TCA 70.0'-80.6"	✓ O71	40.0	50.0	10.0	2.37 Mg	
		Red, porphyroblasts of garnet @ 83.1-84.0'	✓ O72	50.0	60.0	10.0	2.05 Mg	
		Dip of core intersection steepers @ 89.0' to 9-10° TCA	150	60.0	70.0	10.0	2.39 Fg	
		94-95.0' chlorite-f. bed fracture @ 10°	151	70.0	80.0	10.0	1.55 Fg	
		99.0-100.0' " " @ 15° TCA	152	80.0	90.0	10.0	1.85 Mg	
		100-112.0 white, feldspathic vein	153	90.0	100.0	10.0	1.70 Fg	
		113.0-122.0 fine-grained graphitic band ✓	154	100.0	110.0	10.0	1.25 Fg	
		Contact @ 65-70° TCA, folded band,	155	110.0	113.0	3.0	1.32 Fg	
		122.0-128.0 white, amorphous band, neglig. ble graphite ± 1% Cg ✓	O73	110.0	120.0	10.0	2.85 Fg-Mg	
		128.0-135.0 garnet gneiss @ 45° TCA ✓	O74	123.0	133.0	10.0	2.38 Mg	
		135-137.0 interbanded garnet, quartz and graphite gneiss @ 40° TCA ✓	O75	133.0	143.0	10.0	1.59 ✓	
		143.0-153.0 Strongly foliated phase with increased graphite to 1-2% ✓	O76	143.0	153.0	10.0	1.15 Mg	
		154.0-180.0 Pronounced folding with closures ✓	O77	153.0	163.0	10.0	1.62 Fg-Mg	
		160.0-177.0 Banded garnet, quartz, feldspar, graphite gneiss ✓	O78	163.0	173.0	10.0	1.33 Fg	
		177-200.0 banded graphitic phase, fine to medium grained unit 1-2% Cg ✓	O79	173.0	183.0	10.0	1.69 Fg	
		200.0-243.0 foliated garnet-quartz unit with 2.1% Cg ✓	O80	183.0	193.0	10.0	2.31 Mg	
		243.0-290.0 Alternating bands of graphitic gneiss and garnet gneiss ✓	O81	193.0	200.0	7.0	2.01 14.0 Mg	
		290.0-307.3 garnet gneiss with 1.5-1.8% 1% graphitic gneiss ✓	O82	200.0	205.0	5.0	1.19 5.0 Mg	
			O83	240.0	250.0	10.0	1.69	
			✓ O84	250.0	260.0	10.0	2.67 Mg	
			✓ O85	260.0	270.0	10.0	2.00 Mg	
			✓ O86	270.0	280.0	10.0	2.18 Mg	
			✓ O87	280.0	290.0	10.0	3.24 Mg	
			✓ O88	290.0	300.0	10.0	2.19 Mg	
END OF HOLE MLE-04 307.0'								

M.H.F. 05

0-6 CASING

6-46.0 Hard Gneiss

Very fine grained, fractured, blocky, rusty weathered
not for first 10.0' of core recovery

46.0-56.0 Graphitic Gneiss

Very fine to medium grained graphitic gneiss,
46.0-56.0 interlayered faint-graphitic gneiss
@ 10° to core axis

56.0-60.0 Hard Gneiss

35-40

40-50

50-60

60-70

70-80

80-90

90-100

100-110

110-120

120-130

130-140

140-150

Graphitic Hard Gneiss interlayered
interlayered

86.0-96.0 10° to C.A.

100.0' graphitic gneiss, fine grained
matrix $\pm 1.52\% \text{ Co}$

110.0 matrix, siliceous matrix is finely
disseminated flake graphite

116.0 101° to C.A. (down dip dully)

120-123.0 alter quartzite dyke, sharp
in core Out contacts @ 0° to C.A.

Fold closures @ 0° to C.A. 136.0'

136.2 - fine to medium flake's, 140.0 low end
grade 1.0-1.5% Co, Inconsistency remains in
5-10° to C.A.

153-154, 155-156 qtz vein

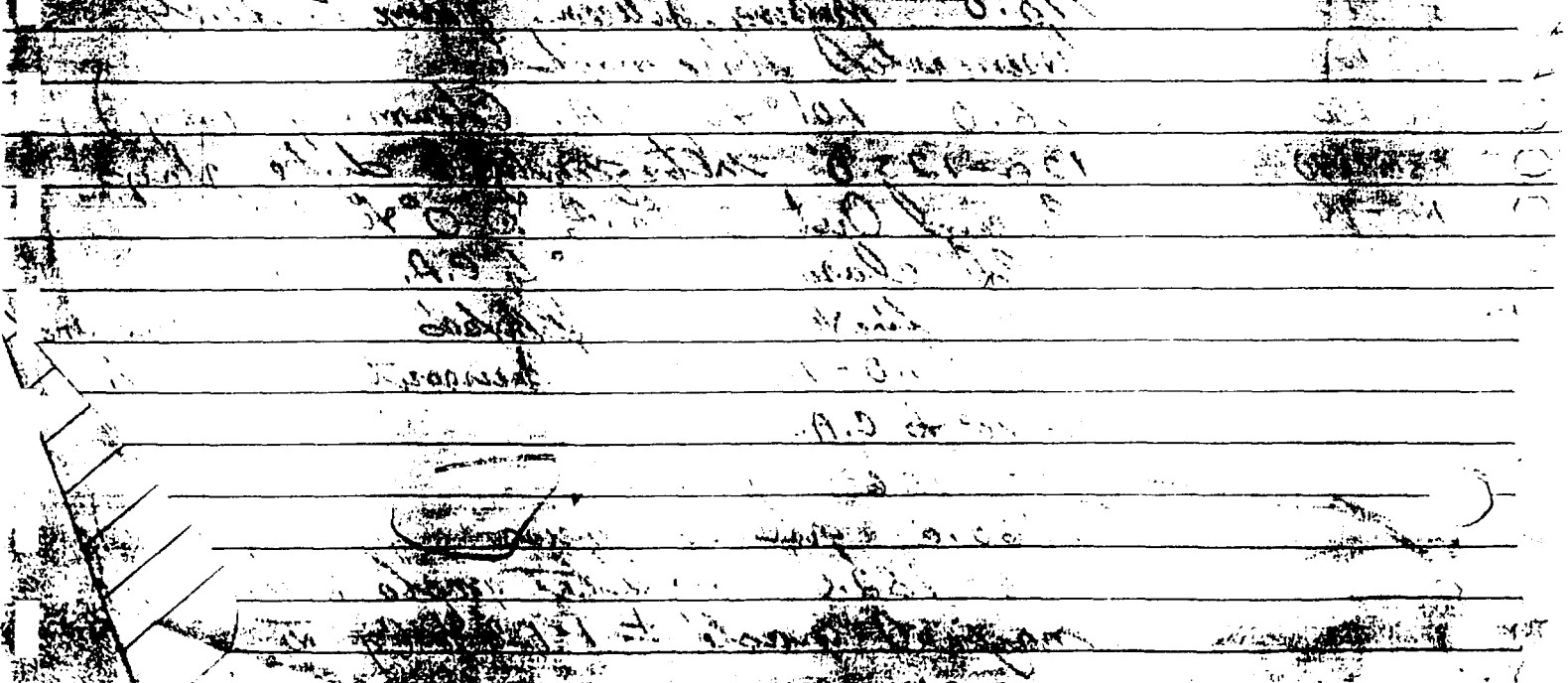
160.0' graphitic gneiss

166-182.0 graphitic, not sediment
marginal grade $\pm 1.1.8\% \text{ Co}$ w fine

flake
182-200.0 marginal ore grade section
200.0 ... textural change over 1-2.0' to
medium flake in medium grained
Silicified matrix, flake, locally remobilized
graphite 202.0-203.0 hematized section, minor
fault, ...
Core cores present @ 30° TCA (216.0)
10-15° TCA (220'), whitish grey
feldspathic layering
minor graphite 221.0

226.0 - 237-238 polymorphic
241-261 white, interbedded feldspathic
graphitic sediments, 10° to CA., locally
granitic 260-265 granitic
277

279.0-306.0 - Granite Gneiss
EOH Pink, fine-grained, massive granite
MLF-05 gneiss, ± 25-30% SiO₂, 30% ortho
close, minor biotite lamellae



General Geology:

Long Meadow

MLF-08

Dec 11, 1992

0-5 CASING

SAMPLE

	FROM	TO
5.0-59.0 <u>Graphite Gneiss</u>	5.0	10.0
key , fine-grained, thin	10.0	20.0
bedded	20.0	30.0
	30.0	40.0
44.0-46.0 garnet gneiss	40.0	50.0
(waste) 30° TCA, 0°	50.0	60.0
Out. Contact 80° TCA	60.0	70.0
Contact layers 55-59.0	70.0	80.0
59.0-63.0 Garnet Gneiss	80.0	90.0
75° TCA	90.0	100.0
	100.0	110.0
63.0-65.8 Graphite	110.0	120.0
	120.0	130.0
65.8-66.8 Hornet	130.0	140.0
	140.0	150.0
66.8-	150.0	160.0
locally remobilized 0° TCA (70.0')		
80.0-85.8 highly graphitic ± 6-8%		
85.8-95.0 finer grained graphite		
97.8-100.0 (waste) garnet		
103-106.0 interlayered		
105-107.0 waste		
107-120 fg, sil, diss graphite @ 75-80° TCA (116')		
120-124 waste band		
132-140.0 grades to waste		
140- low grade graphite, boudin		
85° TCA		

CHAUNCEY ASSAY LABORATORIES LTD.

33 Chauncey Avenue, Toronto, Ontario M8Z 2Z2
Tel: (416) 239-3527 FAX: (416) 239-4012

CERTIFICATE OF ANALYSIS

SUBMITTED BY: CAL GRAPHITE LTD

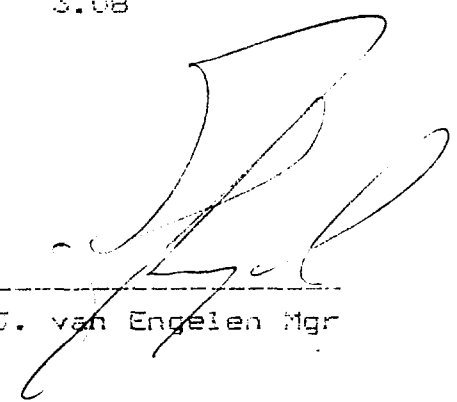
CERTIFICATE NO: CAL-01 DATE: NOVEMBER 11, 1992

ATTENTION: MR. TONY MENARD

DATE RECEIVED: NOVEMBER 6, 1992 SAMPLES OF: ROCKS

SAMPLE NO.: GRAPHITIC CARBON %

001	2.61
002	1.64
003	2.60
004	2.22
005	2.59
006	2.44
007	2.10
008	2.03
009	2.70
010	3.19
011	2.72
012	1.45
013	3.08



J. van Engelen Mgr

CHAUNCEY ASSAY LABORATORIES LTD.

33 Chauncey Avenue, Toronto, Ontario M8Z 2Z2
Tel: (416) 239-3527 FAX: (416) 239-4012

CERTIFICATE OF ANALYSIS

SUBMITTED BY: CAL GRAPHITE LTD
CERTIFICATE NO: CAL-04-1 DATE: NOVEMBER 25, 1992
ATTENTION: MR. TONY MENARD
DATE RECEIVED: NOVEMBER 19, 1992 SAMPLES OF: ROCKS

SAMPLE NO.: GRAPHITIC CARBON %

014	2.51
015	1.53
016	1.03
017	1.01
018	1.64
019	1.48
020	.48
021	.80
022	1.79
023	1.80
024	2.47
025	2.57
026	2.11
027	2.21
028	1.51
029	2.48
030	1.72
031	2.66
032	1.73

MLE-01

MLE-02



J. van Engelen Mgr

CHAUNCEY ASSAY LABORATORIES LTD.

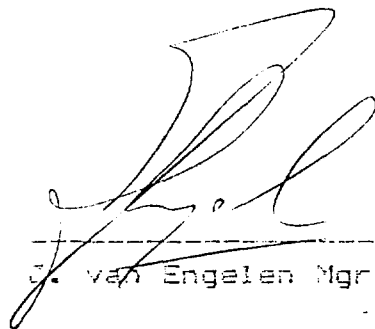
33 Chauncey Avenue, Toronto, Ontario M8Z 2Z2
Tel: (416) 239-3527 FAX: (416) 239-4012

CERTIFICATE OF ANALYSIS

SUBMITTED BY: CAL GRAPHITE LTD
CERTIFICATE NO: CAL-04-2 DATE: NOVEMBER 25, 1992
ATTENTION: MR. TONY MENARD
DATE RECEIVED: NOVEMBER 19, 1992 SAMPLES OF: ROCKS

SAMPLE NO.: GRAPHITIC CARBON %

033	.21
034	1.73
035	1.99
036	2.86
037	2.92
038	3.46
039	3.18
040	1.20
041	1.19
042	1.39
043	2.53
044	2.10
045	2.70
046	3.04
047	1.59
048	1.09
049	1.72
050	.95
051	.33



J. van Engelen Mgr

CHAUNCEY ASSAY LABORATORIES LTD.

33 Chauncey Avenue, Toronto, Ontario M8Z 2Z2
Tel: (416) 239-3527 FAX: (416) 239-4012

RECEIVED JAN 22 1993
CERTIFICATE OF ANALYSIS

SUBMITTED BY: CAL GRAPHITE LTD

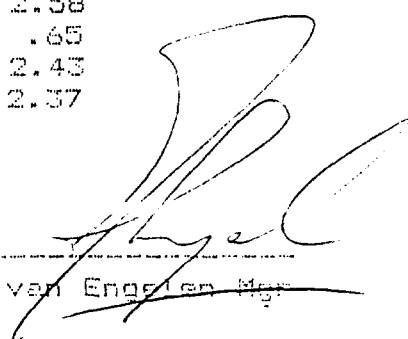
CERTIFICATE NO: CAL-05-1 DATE: DECEMBER 29, 1992

ATTENTION: MR. TONY MENARD

DATE RECEIVED: DECEMBER 07, 1992 SAMPLES OF: ROCKS

SAMPLE NO. : GRAPHITIC CARBON %

052	2.90
053	2.33
054	3.04
055	2.50
056	1.86
057	2.28
058	2.89
059	2.78
060	2.13
061	2.35
062	2.15
063	2.49
064	1.95
065	1.91
066	2.89
067	2.33
068	2.58
069	.65
070	2.43
071	2.37



J. van Engelen Mgr

CHAUNCEY ASSAY LABORATORIES LTD.

33 Chauncey Avenue, Toronto, Ontario M8Z 2Z2
Tel: (416) 239-3527 FAX: (416) 239-4012

CERTIFICATE OF ANALYSIS

SUBMITTED BY: CAL GRAPHITE LTD

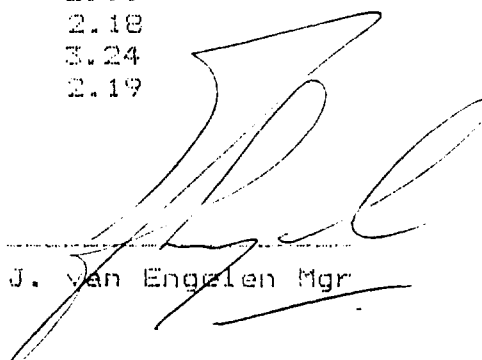
CERTIFICATE NO: CAL-05-2 DATE: DECEMBER 29, 1992

ATTENTION: MR. TONY MENARD

DATE RECEIVED: DECEMBER 07, 1992 SAMPLES OF: ROCKS

SAMPLE NO.: GRAPHITIC CARBON %

072	2.05
073	2.85
074	.38
075	1.59
076	1.15
077	1.62
078	1.33
079	1.69
080	2.31
081	2.01
082	.19
083	.59
084	2.67
085	2.00
086	2.18
087	3.24
088	2.19



J. van Engelen Mgr

CHAUNCEY ASSAY LABORATORIES LTD.

33 Chauncey Avenue, Toronto, Ontario M8Z 2Z2
Tel: (416) 239-3527 FAX: (416) 239-4012

CERTIFICATE OF ANALYSIS

SUBMITTED BY: CAL GRAPHITE LTD

CERTIFICATE NO: CAL-06-01 DATE: JANUARY 22, 1993

ATTENTION: MR. TONY MENARD

DATE RECEIVED: JANUARY 15, 1993 SAMPLES OF: ROCKS

SAMPLE NO.: GRAPHITIC CARBON %

35-40.0	089	3.08
40-50	090	3.50
	091	2.64
	092	2.58
	093	2.88
	094	2.99
	095	2.49
	096	3.64
	097	3.15
	098	2.00
	099	2.63
	100	3.08
	101	2.34
	102	2.34
	103	2.59
	104	3.98
	105	2.95
	106	3.43
	107	3.03
220-230.0	108	3.16

EM-5

569.4 EM 5 contel....

J. van Engelen Mgr

CHAUNCEY ASSAY LABORATORIES LTD.

33 Chauncey Avenue, Toronto, Ontario M8Z 2Z2
 Tel: (416) 239-3527 FAX: (416) 239-4012

CERTIFICATE OF ANALYSIS

SUBMITTED BY: CAL GRAPHITE LTD

CERTIFICATE NO: CAL-06-02 DATE: JANUARY 22, 1993

ATTENTION: MR. TONY MENARD

DATE RECEIVED: JANUARY 15, 1993 SAMPLES OF: ROCKS

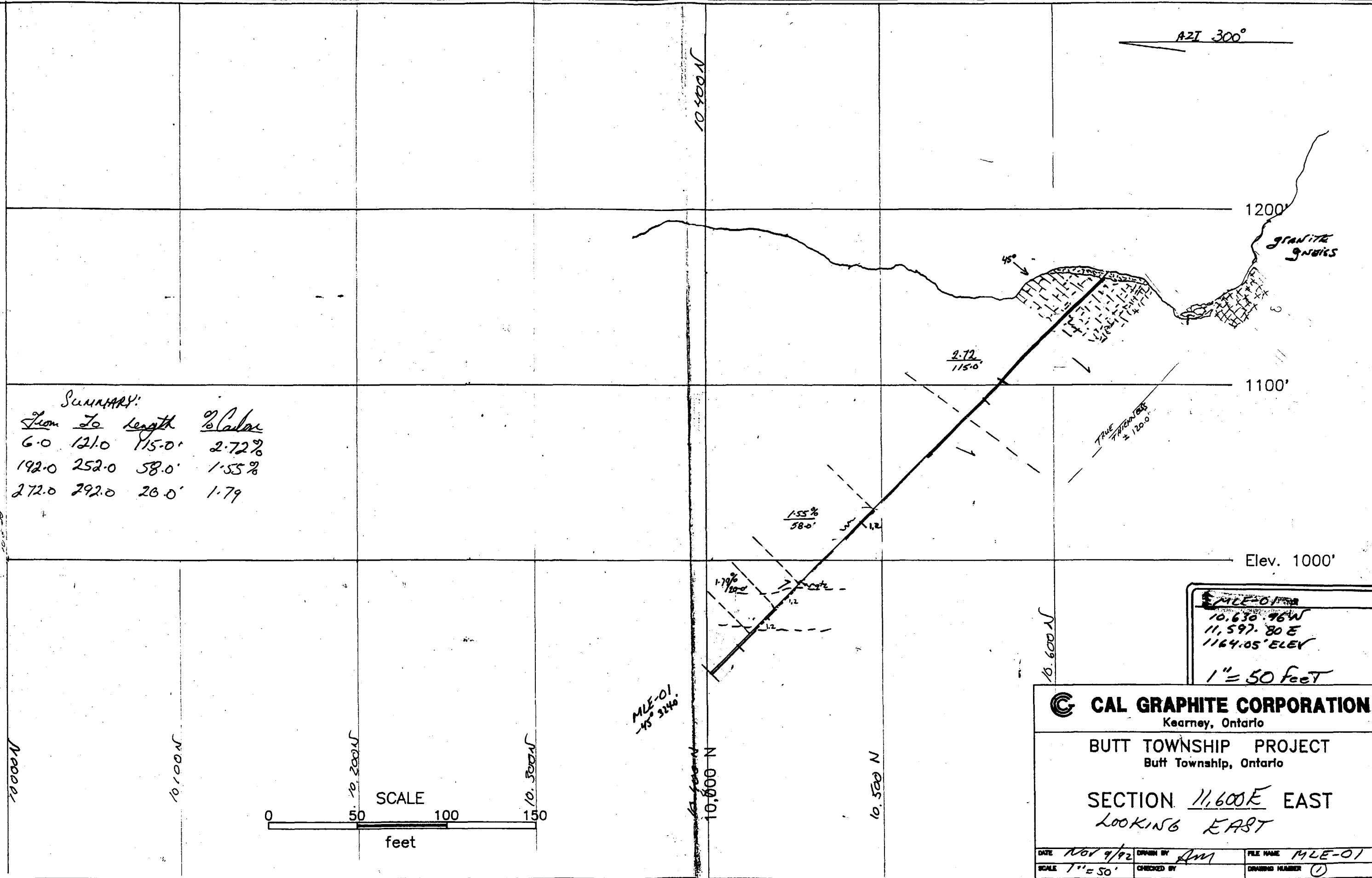
SAMPLE NO.: GRAPHITIC CARBON %

109	2.78	
110	3.40	
111	3.45	
112	3.64	
113	2.69	
280-285	3.09	EM-5
5.0-10.0	2.44	759.9 (760.0) 760.0
115	3.70	122
116	3.94	EM-8
117	3.59	
118	2.94	
119	2.84	
120	3.67	
121	3.90	
122	5.27	
123	3.29	
124	2.74	
125	2.19	
126	2.69	
127	2.65	445.9
128		

J. van Engelen Mgr

DRILL SECTIONS

AZI 300°



SUMMARY:

From	To	Length	% Grade
6.0	121.0	115.0'	2.72%
192.0	252.0	58.0'	1.55%
272.0	292.0	20.0'	1.79%

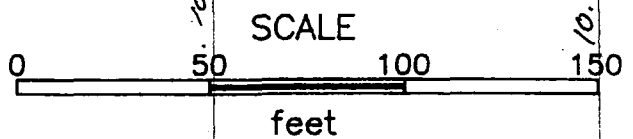
MLE-01
 10,630.96W
 11,597.80E
 1164.05'ELEV
 1" = 50 Feet

CAL GRAPHITE CORPORATION
 Kearney, Ontario

BUTT TOWNSHIP PROJECT
 Butt Township, Ontario

SECTION 11,600E EAST
 LOOKING EAST

DATE	NOV 9/92	DRAWN BY	AM	FILE NAME	MLE-01
SCALE	1" = 50'	CHECKED BY		DRAWING NUMBER	①



MLE-01
 45° 32'40"

10,000 N

10,100 N

10,200 N

10,300 N

10,400 N

10,500 N

10,600 N

10,500 N

1200'

1100'

Elev. 1000'

granite gneiss

TRUE DIP 120°

2.72%
115.0'

1.55%
58.0'

1.79%
100.0'

45°

1.2

1.2

10,600 N

11.250E

Azi 300°

10200N

10300N

10400N

10500N

1200'

MLE-02

1100'

DRILL HOLE SUMMARY

8.20573

Elev. 1000'

DRILL HOLE SUMMARY

10.0 - 157.0	147.0'	2.23 %
200.0 - 220.0	20.0	2.19 %
260.0 - 330.0	70.0'	2.07 %
370.0 - 380.0	10.0'	1.72 %

900'

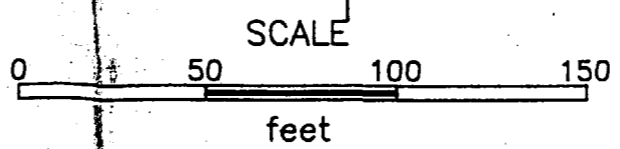
LOOKING EAST

CAL GRAPHITE CORPORATION
Kearney, Ontario

BUTT TOWNSHIP PROJECT
Butt Township, Ontario

SECTION 11.250 EAST

MLE-02 10.403 N
-45° 11.261 E



10,000 N

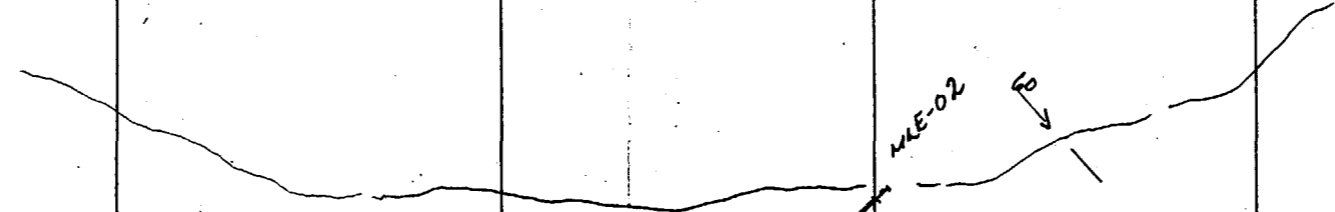
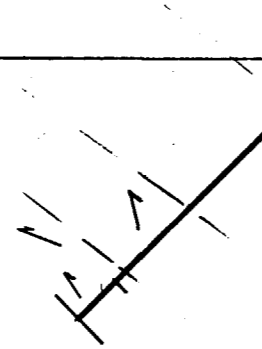
MLE-02
-45° 415.0'

Bands of Graphite

2.23%
147.0'

MLE-02

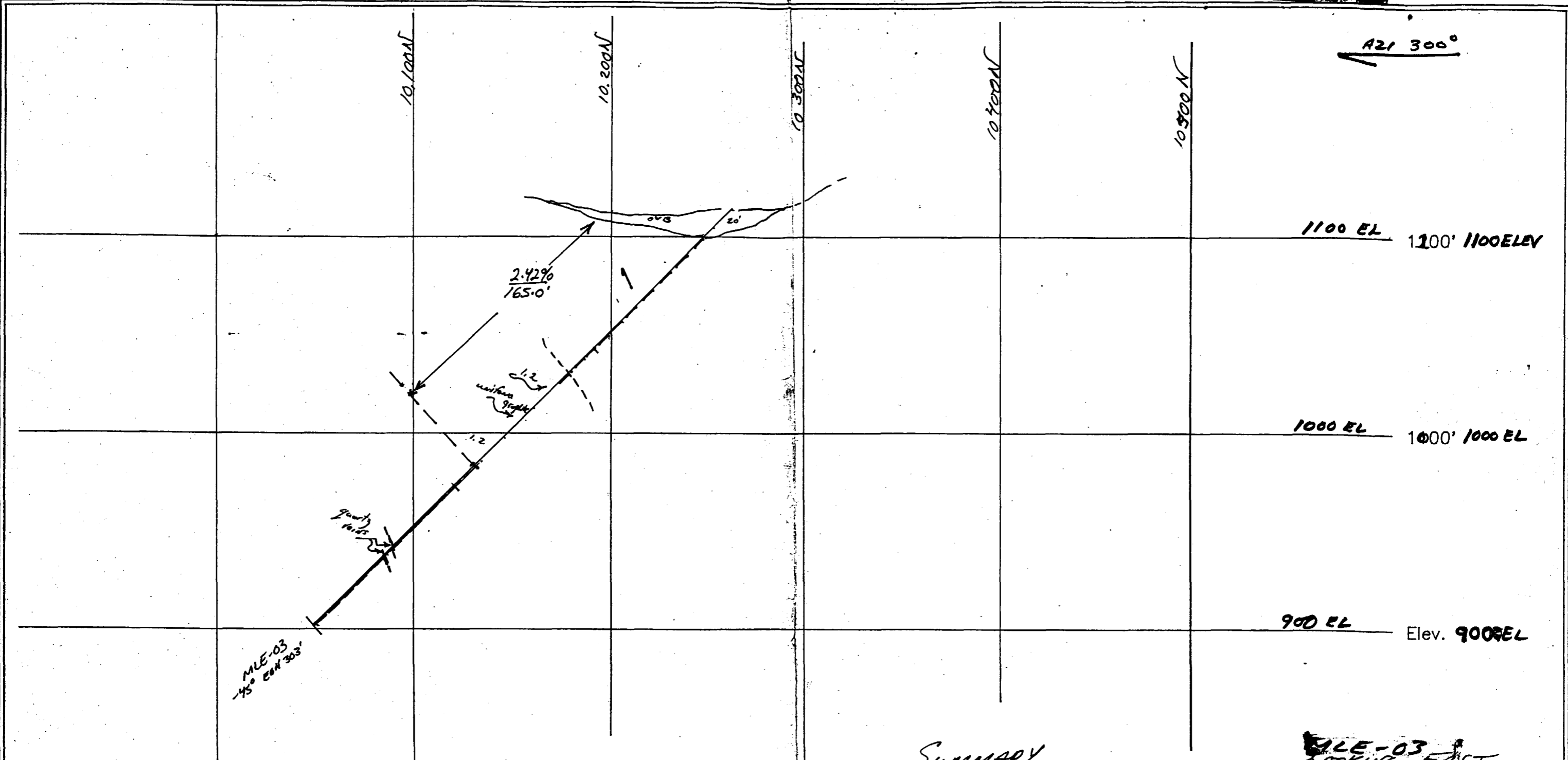
FB



DATE	DRAWN BY	FILE NAME
SCALE	CHECKED BY	DRAWING NUMBER

11,100 E

AZI 300°



MLE-03
45° East 303'

SUMMARY

From: To: %
20.0 - 185.0 165.0 2.42%

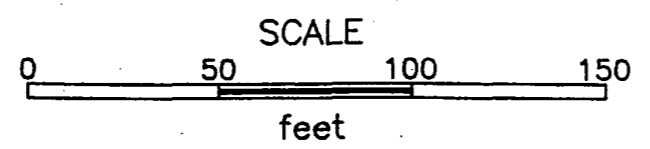
~~MLE-03~~
LOOKING EAST

CAL GRAPHITE CORPORATION
Kearney, Ontario

BUTT TOWNSHIP PROJECT
Butt Township, Ontario

SECTION 11,100E EAST

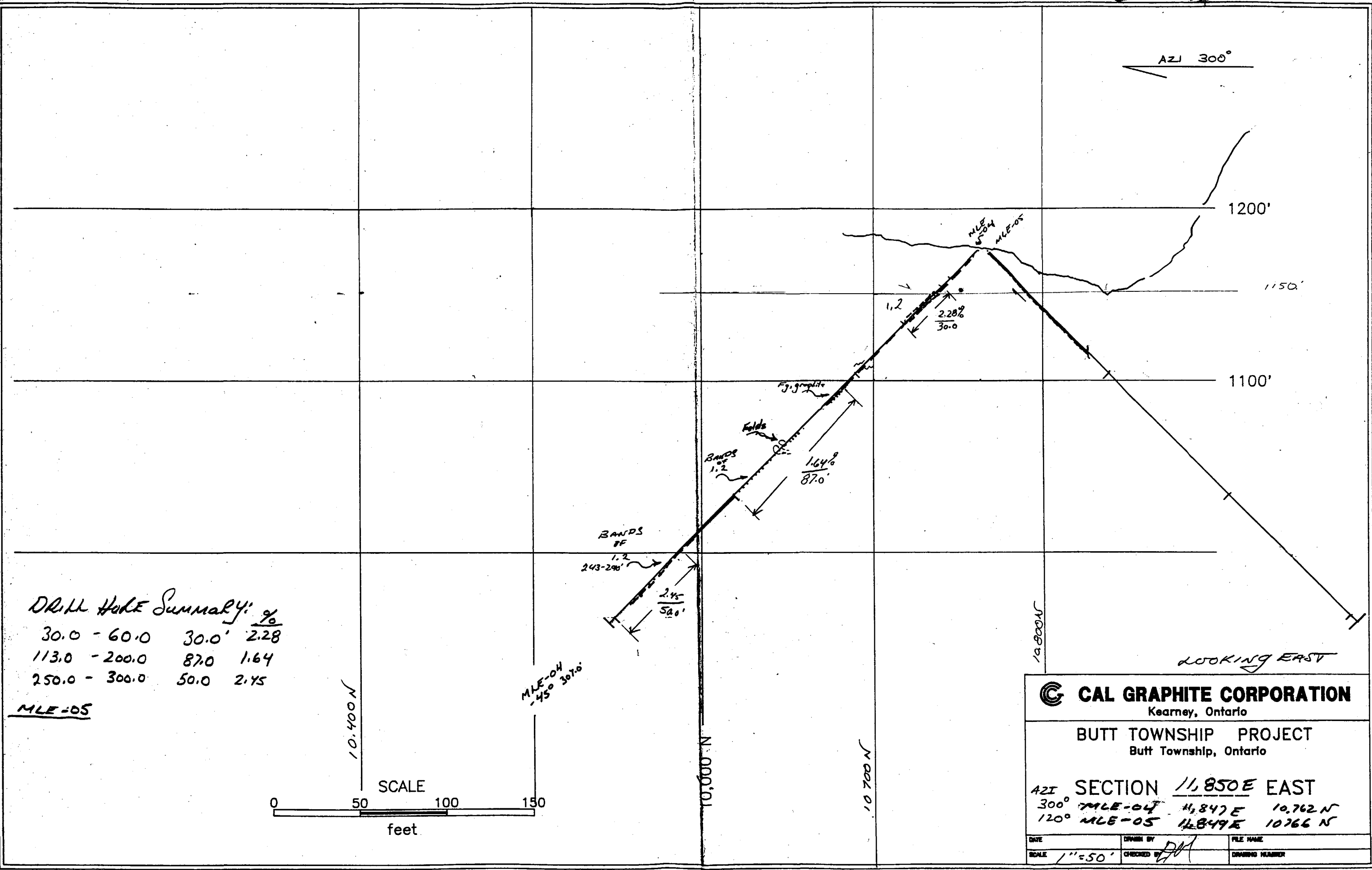
MLE-03
10 263.12 N 11.129.67E



DATE	DRAWN BY	FILE NAME
SCALE	CHECKED BY	DRAWING NUMBER

Wm

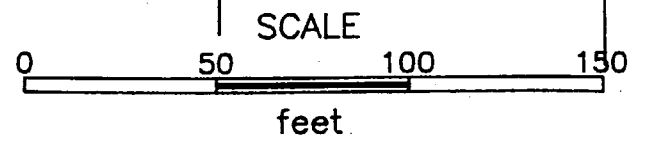
AZI 300°



DRILL HOLE SUMMARY: %

30.0 - 60.0	30.0'	2.28
113.0 - 200.0	87.0	1.64
250.0 - 300.0	50.0	2.45

MLE-05



CAL GRAPHITE CORPORATION
Kearney, Ontario

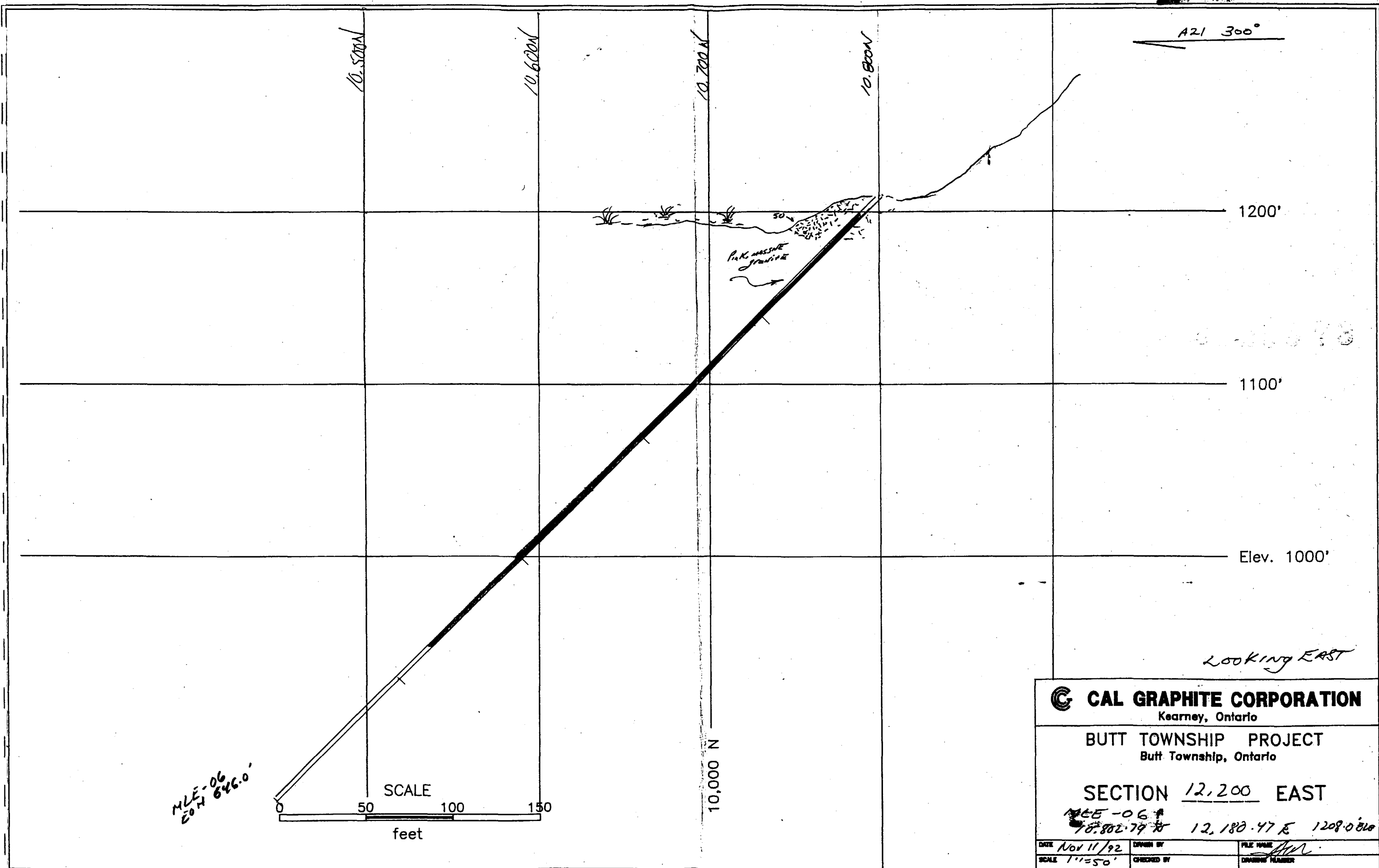
BUTT TOWNSHIP PROJECT
Butt Township, Ontario

SECTION 11, 850 E EAST

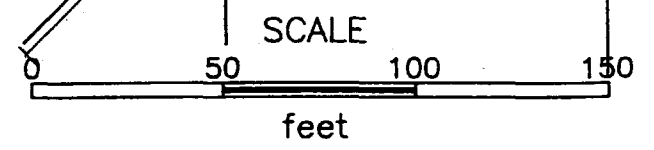
300°	MLE-04	11,847 E	10,762 N
120°	MLE-05	11,849 E	10,766 N

DATE	DRAWN BY	FILE NAME
SCALE 1"=50'	CHECKED BY	DRAWING NUMBER

MLE-06 12,200 E



MLE-06
EON 646.0'



10,000 N

CAL GRAPHITE CORPORATION
Kearney, Ontario

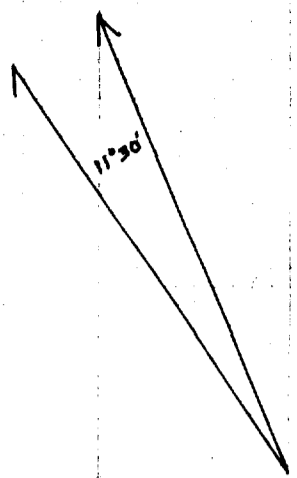
BUTT TOWNSHIP PROJECT
Butt Township, Ontario

SECTION 12,200 EAST

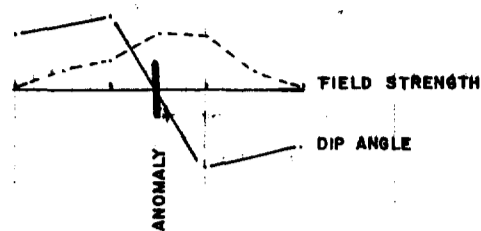
MLE-06
70,802.79 N 12,180.47 E 1208.0810

DATE Nov 11/92	DRAWN BY	FILE NAME
SCALE 1"=50'	CHECKED BY	DRAWING NUMBER

VLf SURVEY

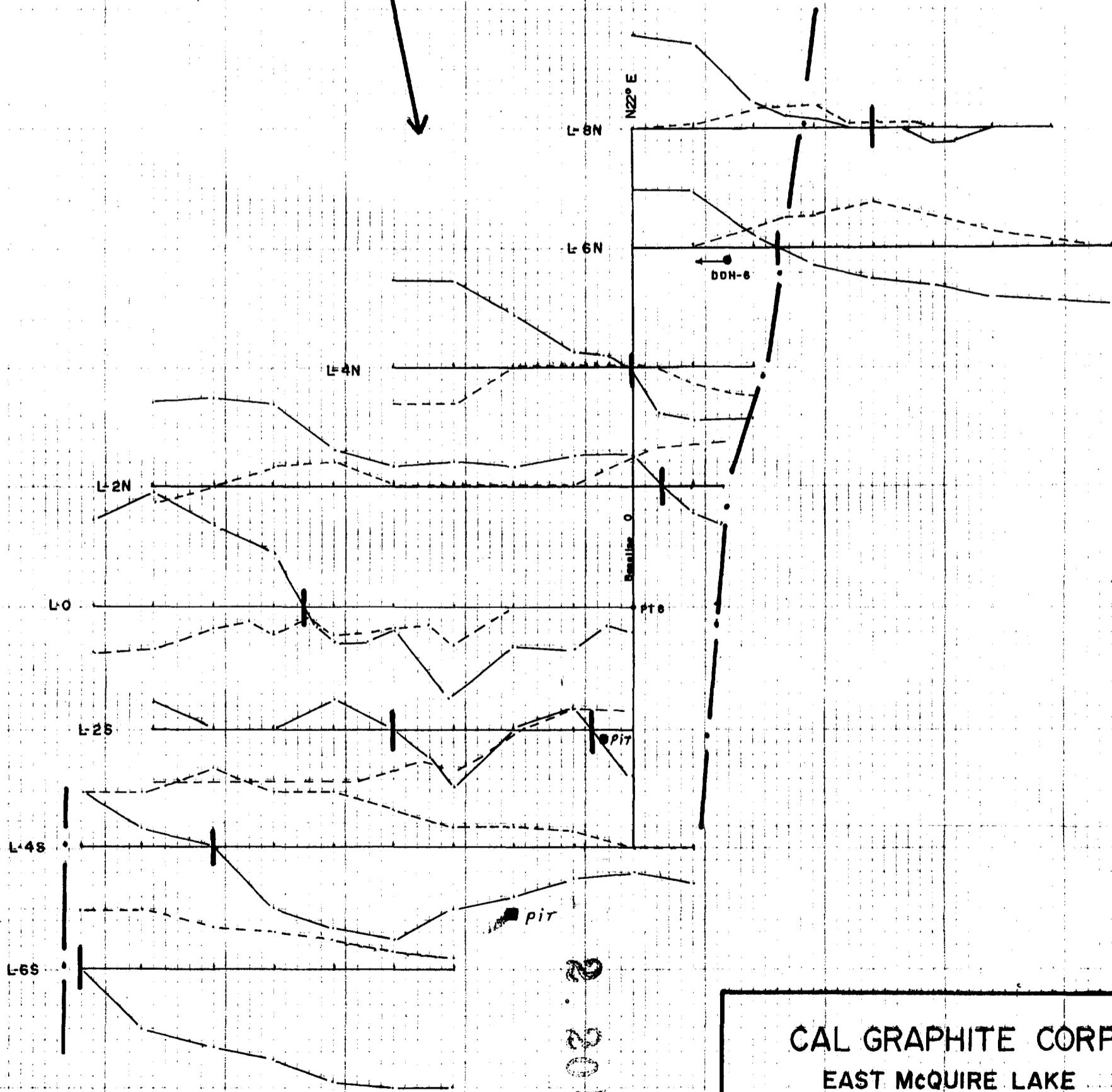


- LEGEND -



INST: PHOENIX VLF-2

ANNAPOLIS STATION



20173
20173

CAL GRAPHITE CORP
EAST McQUIRE LAKE
VLF SURVEY
Scale 1" = 200'

VLF SURVEY 10 3642



Report of Work Conducted After Recording Claim

Transaction Number
W0090.00069

Mining Act

Mining Act. This information will be used for correspondence. Questions about
Ministry of Northern Development and Mines, Fourth Floor, 159 Cedar Street,



31E11NE2002 2.20573 BUTT

900

requirements of filing assessment work or consult the Mining

Recorder.

- A separate copy of this form must be completed for each Work Group.
- Technical reports and maps must accompany this form in duplicate.
- A sketch, showing the claims the work is assigned to, must accompany this form.

Recorded Holder(s) VINECREST MANAGEMENT SERVICES	Client No. 303630
Address 17 VINE CRESCENT BARRIE, ON L4N 2B3	Telephone No. (705) 726-2135
Mining Division SOUTHERN ONTARIO	Township/Area KEARNEY, (BUTT)
M or G Plan No.	
Dates Work Performed From: AUGUST 3, 4, 5, 10, 18, 22, 24 To: AUGUST 26/00	

Work Performed (Check One Work Group Only)

Work Group	Type
Geotechnical Survey	
Physical Work, Including Drilling	
Rehabilitation	
Other Authorized Work	COMPILATION REPORT
Assays	
Assignment from Reserve	

Total Assessment Work Claimed on the Attached Statement of Costs \$ **3200.00**

Note: The Minister may reject for assessment work credit all or part of the assessment work submitted if the recorded holder cannot verify expenditures claimed in the statement of costs within 30 days of a request for verification.

Persons and Survey Company Who Performed the Work (Give Name and Address of Author of Report)

Name	Address
DON K.D. BAXTER, P. ENG.	418-3 KING WILLIAM ST, HUNTSVILLE, ON PIH 1G3 (705) 784-9706

(attach a schedule if necessary)

Certification of Beneficial Interest * See Note No. 1 on reverse side

I certify that at the time the work was performed, the claims covered in this work report were recorded in the current holder's name or held under a beneficial interest by the current recorded holder.	Date	Recorded Holder or Agent (Signature)
--	------	--------------------------------------

Certification of Work Report

I certify that I have a personal knowledge of the facts set forth in this Work report, having performed the work or witnessed same during and/or after its completion and annexed report is true.		
Name and Address of Person Certifying DOANNA BAXTER, PRESIDENT, VINECREST MANAGEMENT SERVICES		
Telephone No. (705) 726-2135	Date AUGUST 28/00	Certified By (Signature) Doanna Baxter

For Office Use Only

Total Value Cr. Recorded	Date Recorded	Mining Recorder	Received Stamp
	Deemed Approval Date	Date Approved	RECEIVED AUG 30 2000 GEOSCIENCE ASSESSMENT OFFICE
	Date Notice for Amendments Sent	Deemed Nov. 28, 2000	

5. Work to be recorded and distributed. Work can only be assigned to claims that are contiguous (adjoining) to the mining land where work was performed, at the time work was performed. A map showing the contiguous link must accompany this form.

Revised W0090.00069

Mining Claim Number, Or if work was done on other eligible mining land, show in this column the location number indicated on the claim map.	Number of Claim Units. For other mining land, list hectare.	Value of work performed on this claim or other mining land.	Value of work applied to this claim.	Value of work assigned to other mining claims.	Bank Value of work to be distributed at a future date
eg TB 7827	18 ha	\$28,825	N/A	\$24,000	\$2,825
eg 1234567	12	0	\$24,000	0	0
eg 1234568	3	\$ 8,892	\$ 4,000	0	4,892
1 1077365	1	3200 ⁰⁰	800 ⁰⁰		
2 1077366	1			800 ⁰⁰	
3 1077367	1			800 ⁰⁰	
4 1077370	1			800 ⁰⁰	
5					
6					
7					
8					
9					
10					
11					
12					
13					
14					
15					
Column Totals	4	3200 ⁰⁰	800 ⁰⁰	2400 ⁰⁰	

I, Donna Baxter do hereby certify that the above work credits are eligible under subsection 7 (1) of the Assessment Work Regulation 6/98 for assignment to contiguous claims or for application to the claim where the work was done.

Signature of Recorded Holder or Agent Authorized in Writing
Donna Baxter

Date August 30/00

6. Instruction for cutting back credits that are not approved.

Some of the credits claimed in this declaration may be cut back. Please check (✓) in the boxes below to show how you wish to prioritize the deletion of credits:

- 1. Credits are to be cut back from the Bank first, followed by option 2 or 3 or 4 as indicated.
- 2. Credits are to be cut back starting with the claims listed last, working backwards; or
- 3. Credits are to be cut back equally over all claims listed in this declaration; or
- 4. Credits are to be cut back as prioritized on the attached appendix or as follows (describe):

Note: If you have not indicated how your credits are to be deleted, credits will be cut back from the Bank first, followed by option number 2 if necessary.

For Office Use Only

Received Stamp

Deemed Approved Date

Date Notification Sent

Date Approved

Total Value of Credit Approved

Approved for Recording by Mining Recorder (Signature)

09-01 (08/97)

RECEIVED
AUG 31 2000
GEOSCIENCE ASSESSMENT
OFFICE

AUG 30 2000
GEOSCIENCE ASSESSMENT
OFFICE

Approved for Recording (signature):

Don K.D. Baxter, P.Eng.
Mining Engineer

48-3 King William St.
Huntsville, Ontario
Canada P1H 1G3
Tel: 705 789- 9706
Fax: 705789- 9706

August 28, 2000

Mrs. D. Baxter
President,
Vinecrest Management Services
17 Vine Crescent
Barrie, Ontario L4N 2B3
(705) 726-2135

VIA FAX

2 . 805 78

RE: Compilation Report for Calims 1077365, 1077366, 1077367, and 1077370

August 3, 4,5	Field work, locate and review daimond drill core survey of claim group to locate and confirm drill collars (2.5 days @ 400/day)	\$1000.00
August 10	Source, review and organize relevant material (1 day @ 400/day)	\$400.00
August 18,22,24,26	Compilation report text, drawings, maps (4 days @ 400/day)	\$1600.00
Travel:	Three trips to the site, round trip from Huntsville (450 km @ \$0.30/km)	\$ 135.00
Rental	Survey Instrument (@100.00	\$ 100.00
TOTAL		\$ 3235.00

If you have any questions, please do not hesitate to contact the writer.

Yours truly,



Don Baxter, P. Eng.

Don K.D. Baxter, Mining Engineer

48-3 King William St. • Huntsville, Ontario • Canada , P1H 1G3 • Tel (705) 789-9706

Geoscience Assessment Office
933 Ramsey Lake Road
6th Floor
Sudbury, Ontario
P3E 6B5

Telephone: (888) 415-9845
Fax: (877) 670-1555

December 11, 2000

Donna Baxter
VINECREST MANAGEMENT SERVICES
17 VINE CRESCENT
BARRIE, ONTARIO
L4N-2B3

Visit our website at:
www.gov.on.ca/MNDM/MINES/LANDS/mlsmnpge.htm

Dear Sir or Madam:

Submission Number: 2.20573

Status

Subject: Transaction Number(s): W0090.00069 Approval After Notice

We have reviewed your Assessment Work submission with the above noted Transaction Number(s). The attached summary page(s) indicate the results of the review. **WE RECOMMEND YOU READ THIS SUMMARY FOR THE DETAILS PERTAINING TO YOUR ASSESSMENT WORK.**

If the status for a transaction is a 45 Day Notice, the summary will outline the reasons for the notice, and any steps you can take to remedy deficiencies. The 90-day deemed approval provision, subsection 6(7) of the Assessment Work Regulation, will no longer be in effect for assessment work which has received a 45 Day Notice. Allowable changes to your credit distribution can be made by contacting the Geoscience Assessment Office within this 45 Day period, otherwise assessment credit will be cut back and distributed as outlined in Section #6 of the Declaration of Assessment work form.

Please note any revisions must be submitted in **DUPLICATE** to the Geoscience Assessment Office, by the response date on the summary.

If you have any questions regarding this correspondence, please contact LUCILLE JEROME by e-mail at lucille.jerome@ndm.gov.on.ca or by telephone at (705) 670-5858.

Yours sincerely,



ORIGINAL SIGNED BY
Lucille Jerome
Acting Supervisor, Geoscience Assessment Office
Mining Lands Section

Work Report Assessment Results

Submission Number: 2.20573

Date Correspondence Sent: December 11, 2000

Assessor: LUCILLE JEROME

Transaction Number	First Claim Number	Township(s) / Area(s)	Status	Approval Date
W0090.00069	1077365	BUTT	Approval After Notice	December 11, 2000

Section:
18 Other DATA

The 45 days outlined in the Notice dated October 23, 2000 have passed.

Assessment work credit has been approved as outlined on the attached Distribution of Assessment Work Credit sheet.

Correspondence to:

Resident Geologist
Tweed, ON

Assessment Files Library
Sudbury, ON

Recorded Holder(s) and/or Agent(s):

Donna Baxter
VINECREST MANAGEMENT SERVICES
BARRIE, ONTARIO

Distribution of Assessment Work Credit

The following credit distribution reflects the value of assessment work performed on the mining land(s).

Date: December 11, 2000

Submission Number: 2.20573

Transaction Number: W0090.00069

<u>Claim Number</u>	<u>Value Of Work Performed</u>
1077365	1,635.00
Total: \$	1,635.00

Paxton Twp.

THE TOWNSHIP OF

BUTT

DISTRICT OF NIPISSING

SOUTHERN ONTARIO MINING DIVISION

SCALE 1-INCH=40 CHAINS

LEGEND

PATENTED LAND	⊙
CROWN LAND SALE	C.S.
LEASES	⊙
LOCATED LAND	Loc.
LICENSE OF OCCUPATION	L.O.
MINING RIGHTS ONLY	M.R.O.
SURFACE RIGHTS ONLY	S.R.O.
ROADS	—
IMPROVED ROADS	—
KING'S HIGHWAYS	—
RAILWAYS	—
POWER LINES	—
MARSH OR MUSKED	—
MINES	—
CANCELLED	—

NOTES

400' Surface Rights Reservation around all lakes and rivers

This Map Is Not To Be Used For Survey Purposes.

Mining Claims in the Subdivided portion of this Township are accepted subject to section 53 of the Mining Act.

AREA WITHIN THE ALGONQUIN PROVINCIAL PARK WITHDRAWN FROM STAKING

SAND AND GRAVEL

(G) QUARRY PERMIT

AREAS WITHDRAWN FROM DISPOSITION

M.R.O. MINING RIGHTS ONLY
S.R.O. SURFACE RIGHTS ONLY
M. B. S. MINING AND SURFACE RIGHTS

DESCRIPTION ORDER NO. DATE DISPOSITION FILE
W 50-104194 NOV. 1994 36MK 2650

Pending Application under the Public Lands Act

Pending Application under the Public Lands Act (2)

THE INFORMATION THAT APPEARS ON THIS MAP HAS BEEN COMPILED FROM VARIOUS SOURCES, AND ACCURACY IS NOT GUARANTEED. THOSE WISHING TO STAKE MINING CLAIMS SHOULD CONSULT WITH THE MINING RECORDS, MINISTRY OF NORTHERN DEVELOPMENT AND MINES, FOR ADDITIONAL INFORMATION ON THE STATUS OF THE LANDS SHOWN HEREON

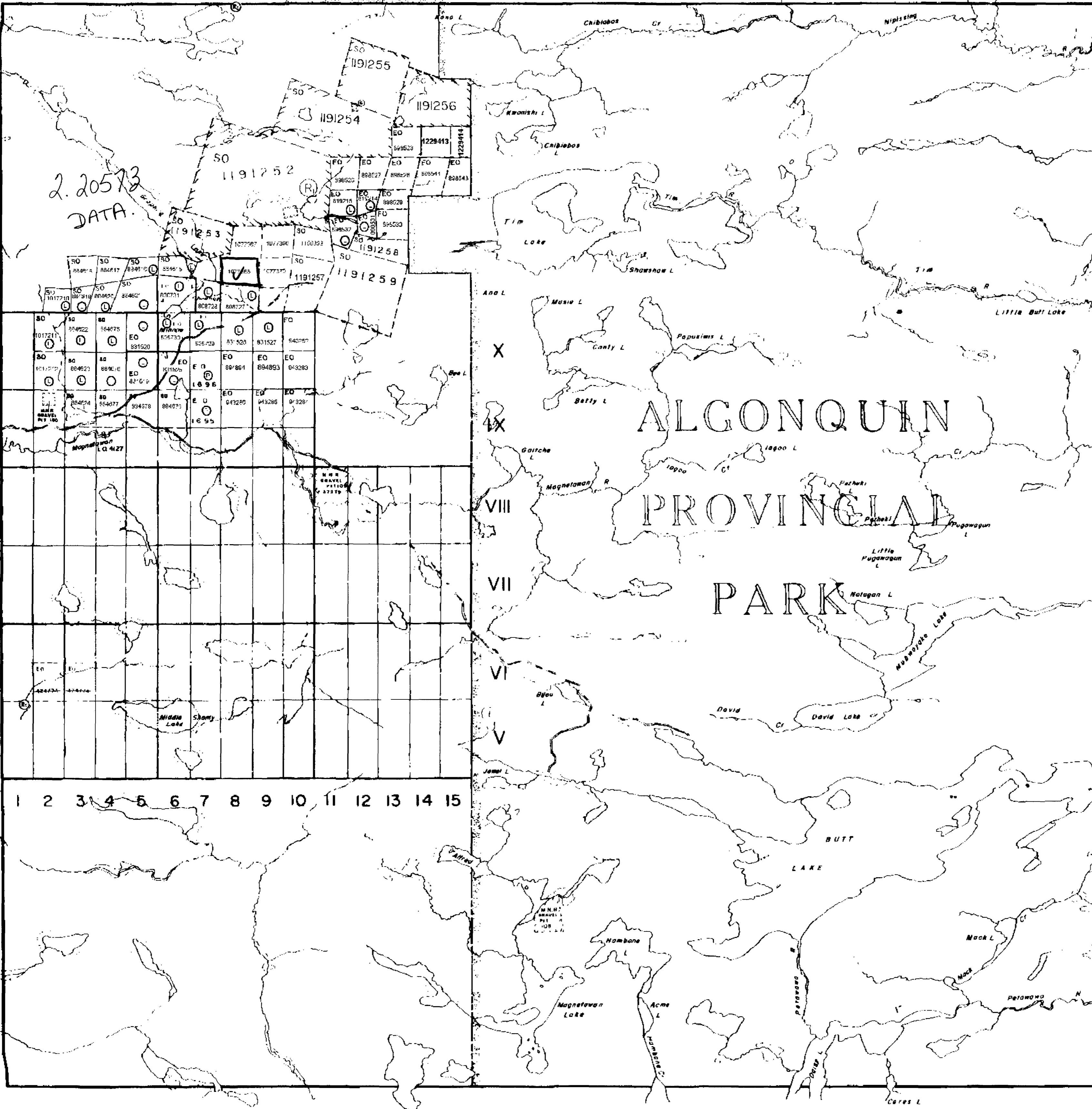
PLAN NO. - M. 64

ONTARIO
MINISTRY OF NATURAL RESOURCES

Proudfoot Twp.

Devine Twp.

Mc Craney Twp.



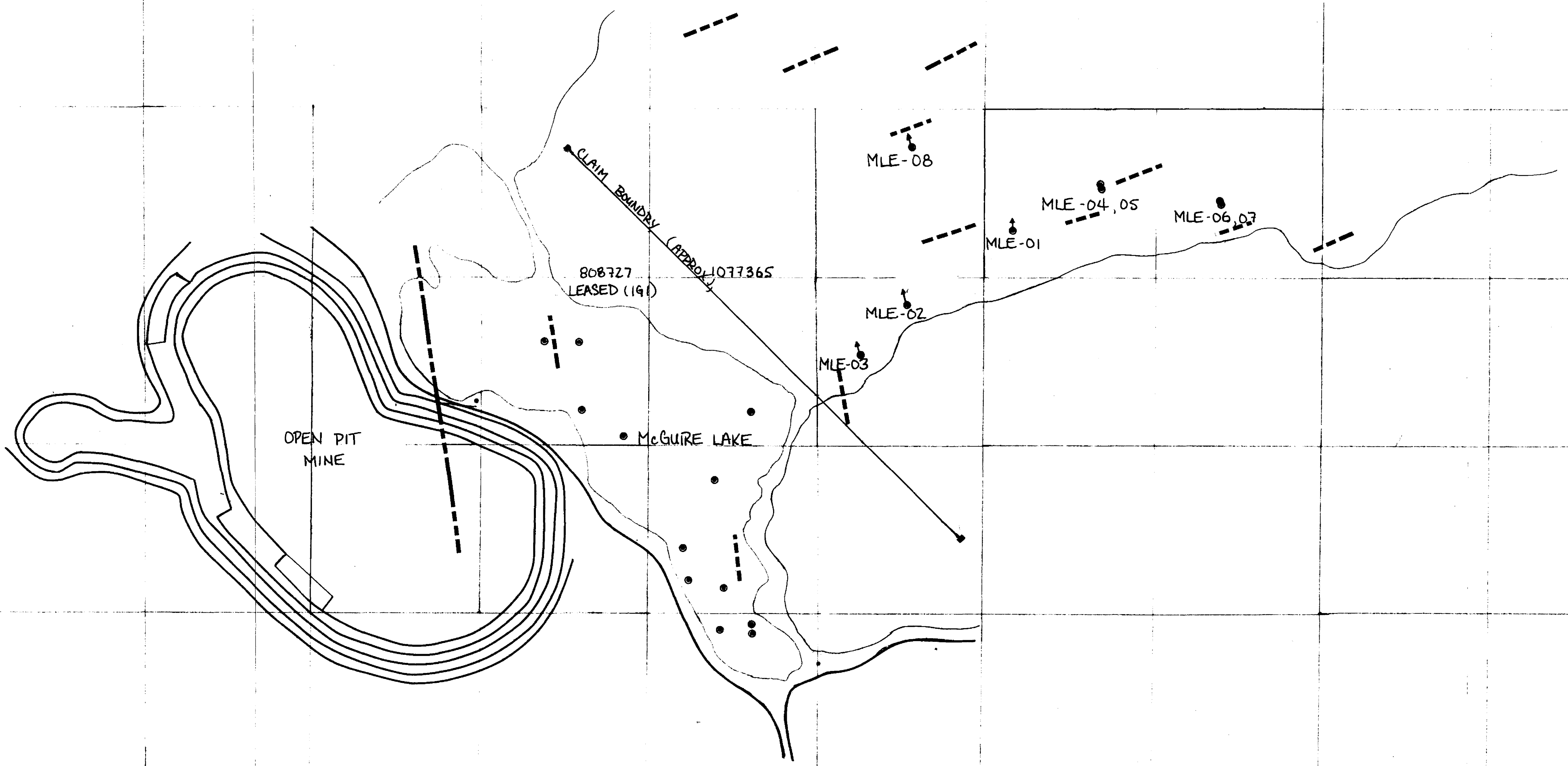
31811N2002 2.20573 BUTT

200

11,000 N

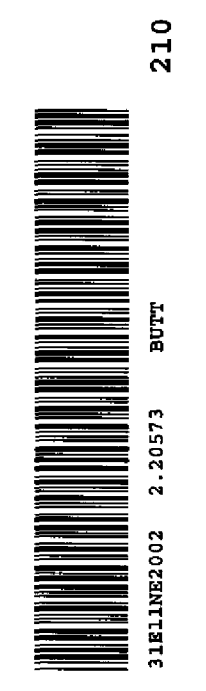
10,000 N

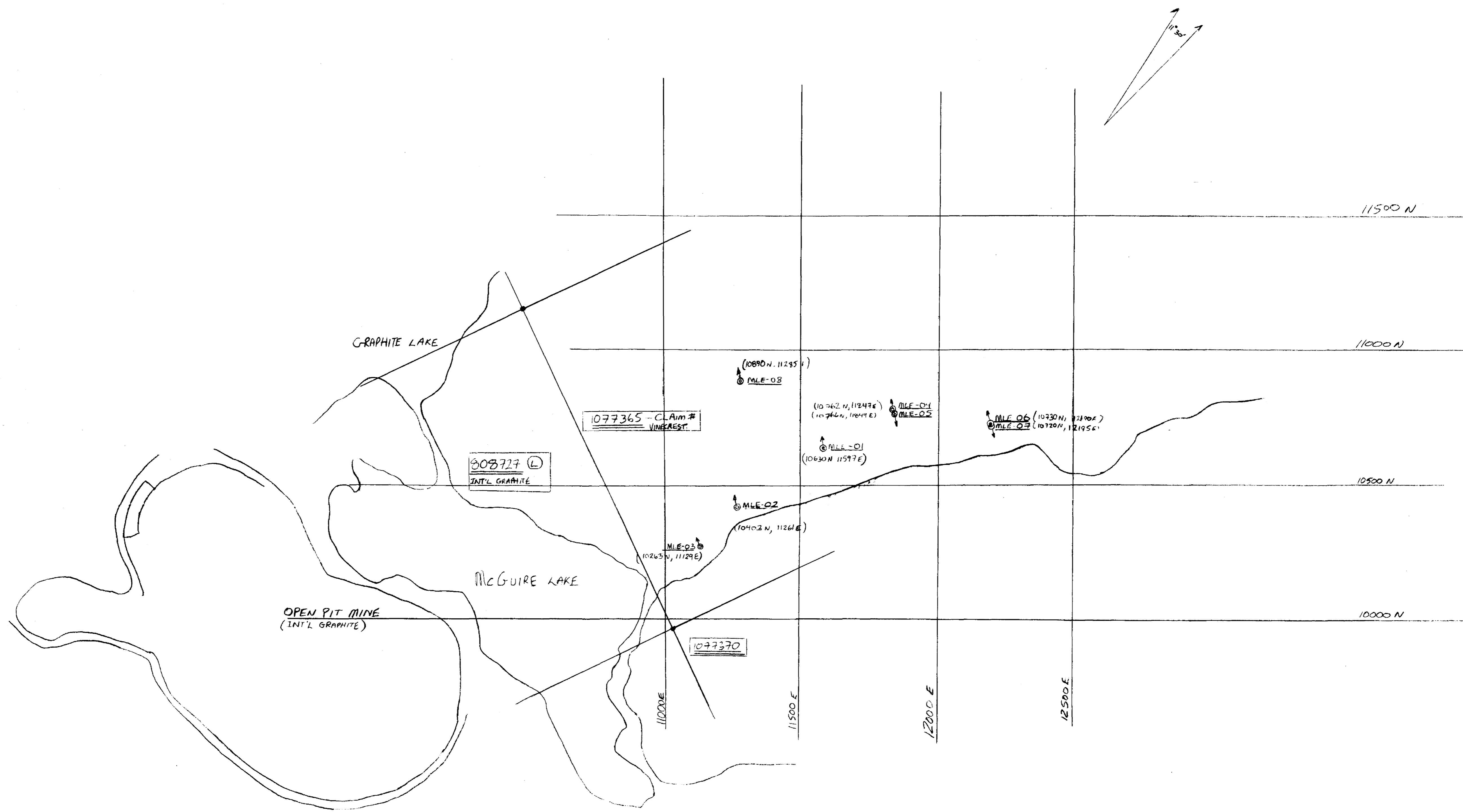
11,000 E



- VLF ANOMALY
- DDH

EAST McGUIRE COMPILATION MAP			
SCALE 1" = 200 FT	APPROVED BY	DATE	DRAWN BY
AUG 2000	DON BAYTER, P.Eng.		DB
VINECREST MANAGEMENT			
			DRAWING NUMBER





VINECREST MANAGEMENT SERVICES LTD		
SCALE: 1" = 200'	APPROVED BY:	DRAWN BY: V.B.
DATE: NOV 27/00	LON BAXTER, P. ENG.	REVISED: MW/10U
DIAMOND DRILL COLLARS - SURVEY		
CLAIM GROUP - 1077365, 1077366, 1077367, 1077370		DRAWING NUMBER