



31F03NW9492 13 RAGLAN

010

Diamond Drilling

Township of RAGLAN

Report No: 13

Work performed by: STEWART HENDERSON

Claim No	Hole No	Footage	Date	Note
EO 31416	# 1	216.7'	June/68	
	# 1A	91'	June/68	
EO 31418	# 6	440.2'	June/68	
	# 9	304'	June/68	
	# 15	293'		
EO 31417	# 10	204'	June/68	
	# 11	309'	June/68	
	# 12	215'		
	# 13	302'		
EO 31419	# 14	441'		
	# 16	273'	July/68	

Notes:

DIAMOND DRILL RECORD

NAME OF PROPERTY Henderson
 HOLE NO. 1 LENGTH 216.7
 LOCATION _____
 LATITUDE 0+00N DEPARTURE 2+35 W
 ELEVATION _____ AZIMUTH 295 DIP 45
 STARTED Jun. 8, 1968 FINISHED Jun. 9

FOOTAGE	DIP	AZIMUTH	FOOTAGE	DIP	AZIMUTH

HOLE NO. 1 SHEET NO. 1/1

REMARKS _____

LOGGED BY M. Morin

FOOTAGE		DESCRIPTION	SAMPLE				ASSAYS			
FROM	TO		NO.	SULPHIDES	FOOTAGE		%	%	OZ/TON	OZ/TON
					FROM	TO				
0	10	Casing								
10	30.4	Medium-grained, grey limestone with thin micaceous layers								
	15	70°								
30.4	189	Biotite-amphibole schist, varying from massive to layered; Few sections with phlogopite. 3 in. disseminated pyrite at 47°; quartzitic layers 4 in. to 1 foot; One speck of MoS ₂ with pyrite at 64° 32°-50°; 47°-75°; 53-60°; 72-85°; 92-87°; 100-85°; 108-90°; 137-60°; 187-65°								
189	198	Micaceous quartzite with disseminated pyrrhotite								
	191	85°								
198	216.7	Biotite-amphibole schist; quartzite layers 210.4-212.1								
	215	80°								
	216	55°								
		End of hole								

Morin & Morin, Eng.
16-8-68

DIAMOND DRILL RECORD

NAME OF PROPERTY Henderson
 HOLE NO. 1A LENGTH 91
 LOCATION _____
 LATITUDE 0+00N DEPARTURE 3+59.6 W
 ELEVATION _____ AZIMUTH _____ DIP 90
 STARTED Jun. 10, 1968 FINISHED Jun. 10

FOOTAGE	DIP	AZIMUTH	FOOTAGE	DIP	AZIMUTH

HOLE NO. 1A SHEET NO. 1/1

REMARKS _____

LOGGED BY M. Morin

FOOTAGE		DESCRIPTION	SAMPLE				ASSAYS			
FROM	TO		NO.	% SULPHIDES	FOOTAGE		%	%	OZ/TON	OZ/TON
		FROM			TO	TOTAL				
0	8	Casing								
8	11	Pegmatite, coarse grained with two patches of biotite; R: background								
11	12.5	Biotite schist with epidote								
	12	60°								
12.5	13	Ground core with one piece of pegmatite remaining								
13	87.5	Biotite schist; schistosity varying from 50°- 55°; Quartzitic layers 4' of ground core								
		End of Hole								
		<i>Marcus Morin, Eng</i> <i>16-8-68</i>								

LANGRIDGE LIMITED, 106 RICHMOND STREET WEST, TORONTO, ONT. EM. 6-1168

MOND DRILL RECORD

NAME OF PROPERTY Henderson
 HOLE NO. 6 LENGTH 440.2
 LOCATION _____
 LATITUDE 10400N DEPARTURE 3425 E
 ELEVATION _____ AZIMUTH 295 DIP 45
 STARTED Jun. 13, 1968 FINISHED Jun. 15

FOOTAGE	DIP	AZIMUTH	FOOTAGE	DIP	AZIMUTH

HOLE NO. 6 SHEET NO. 1/2
 REMARKS _____
 LOGGED BY M. Morin

LANGRIDGE LIMITED, 106 RICHMOND STREET WEST, TORONTO, ONT. EM. 6-1168

FOOTAGE		DESCRIPTION	SAMPLE			ASSAYS			
FROM	TO		NO.	% SULPHIDES	FOOTAGE FROM TO TOTAL	%	%	oz/TON	oz/TON
0	10	Casing							
10	71	Crystalline limestone with sparse graphite flakes; section with diopside and wilsonite 33.7-38.6; 77-78 reaction rim of dark serpentine around a quartzite pocket 27°-85°; 49°-70°; 63°-75°							
71	78.6	Micaceous quartzite; last 2 feet mica schist							
78.6	101	90° Pegmatite coarse grained with occasional biotite flakes and small stringers of biotite schist 92°-65°; 98°-60°							
101	108	Medium-grained, massive, mafic, biotite-amphibole gneiss (met. pyroxenite); pegmatite stringer 105-106							
108	133.1	Fine-grained, biotite schist; Quartz-feldspar pegmatite 115.7-116.7							
133.1	156.7	70° Mottled, biotite schist; 152°-75°							
156.7	183	Medium-grained, dark, biotite-amphibole gneiss. 181-70°							
183	190	Met. pyroxenite							
190	196.5	Mica pegmatite; mica flakes oriented; R: background on 1-foot sections; 192 70°							
196.5	210.3	Biotite schist; layers of quartzite in last 10 feet with coarse pyroxenitic layers; pyrrhotite and chalcopyrite 1/4in. at 200.6.							
210.3	271.2	70° Layered mica quartzite and biotite gneiss; occasional pyrite stringers and coatings; disseminated pyrrhotite with rare specks of chalcopyrite Lost core: 256.3-258.6; 263.1-265; 266.2-267.6 226°-80°; 231°-75°; 252°-75°; 262°-75°							
271.2	296.3	Limestone with few micaceous partings; lost core: 288.1-290; 277°-70°; 282°-90°							
296.3	374	Coarse-grained pegmatite; R: slightly above background to 300. Becomes grey at 320 with lower radioactivity; fine MoS ₂ at 307°; amphibolite 257-361.2 and 343-347. Lost core: 368.6 - 370							

DIAMOND DRILL RECORD

NAME OF PROPERTY Henderson
 HOLE NO. 6 LENGTH _____
 LOCATION _____
 LATITUDE _____ DEPARTURE _____
 ELEVATION _____ AZIMUTH _____ DIP _____
 STARTED _____ FINISHED _____

FOOTAGE	DIP	AZIMUTH	FOOTAGE	DIP	AZIMUTH

HOLE NO. 6 SHEET NO. 2/2

REMARKS _____

LOGGED BY M. Morin

LANGRIDGE LIMITED, 106 RICHMOND STREET WEST, TORONTO, ONT. EM. 6-1168

FOOTAGE		DESCRIPTION	SAMPLE			ASSAYS			
FROM	TO		NO.	SUBS ICES	FOOTAGE FROM TO TOTAL	%	%	OZ/TON	OZ/TON
374	358	65°							
399	399.6	Biotite schist; 377°-75°; 387°-80°; 398°-80°							
404	404	Quartz-feldspar pegmatite							
407	407	Amphibolite							
407	409.5	Pegmatite							
409.5	416.8	Amphibolite							
416.8	417.7	Pink pegmatite R:76-80; <u>uraninite</u> coating							
417.7	440.2	Mixed biotite gneiss and amphibolite; some quartzitic layers 423°-90°; 432°-85°							
		End of hole							
		<i>Marc Morin, Sup</i> <i>16-8-68</i>							

DIAMOND DRILL RECORD

NAME OF PROPERTY Henderson
 HOLE NO. 9 LENGTH 304
 LOCATION _____
 LATITUDE 10+50N DEPARTURE 2+00E
 ELEVATION _____ AZIMUTH 295 DIP 45
 STARTED Jun. 18, 1968 FINISHED Jun. 19

FOOTAGE	DIP	AZIMUTH	FOOTAGE	DIP	AZIMUTH

FILE NO. 9 SHEET NO. 1/2

REMARKS _____

LOGGED BY M. Morin

LANGRIDGE LIMITED, 100 RICHMOND STREET WEST, TORONTO, ONT. EM. 6-1181

FOOTAGE		DESCRIPTION	SAMPLE			ASSAYS			
FROM	TO		NO.	SIZE IN INCHES	FOOTAGE FROM TO TOTAL	%	%	OZ/TON	OZ/TON
0	4	Casing							
4	6	Weathered pegmatite							
6	18	Limestone; core angle 85°-90°							
18	23.8	Grey pegmatite with scattered biotite flakes; 22°-70°							
23.8	29	Limestone and amphibolite; 28°-80°							
29	40	Grey pegmatite with scattered mica flakes							
40	49.5	Limestone							
49.5	59.2	Pegmatite bordered by 2 inches of mica reaction zone Re: 32-40							
59.2	76.3	Limestone with quartzitic layer in contact with pegm.; irregular mica partings; 74°-70°; 68°-75°							
76.3	82.8	Layered micaceous quartzite; some disseminated pyrrhotite 77°-55°; 82°-75°							
82.8	101.5	Metamorphic pyroxenite							
101.5	115	Same; lost core: 108-110; 110.6-111.6							
115	120.5	Micaceous quartzite with narrow pegmatitic stringers							
120.5	131.1	Pyroxenite; lost core: 122.2-123.2; 130-131							
131.1	133.4	Pegmatite							
133.4	139	Pyroxenite							
139	150.2	Pegmatite							
150.2	158	Biotite schist with quartzitic layers; 158°-65°							
158	168.5	Micaceous quartzite recrystallized with coarse grains 80°							
168.5	178.8	Pegmatite with sparse mica flakes; R: 40-50 to 177° and 75-145 177-178°							
178	191	Biotite schist with quartzitic layers; 182°-80°; 192°-75°							
191	260.7	Coarse recrystallized quartzite grading to fine-grained quartzite. Disseminated pyrrhotite with rare specks of chalcopyrite; few massive pyrrhotite stringers with coarse pyrite 203°-85°; 213°-80°; 218°-75°; 223°-90°; 228°-85°; 238°-75°; 248°-75°; 253°-75°; 258°-80°							
260.7	270	Grey, massive limestone							
270	273	Micaceous pyroxenite with disseminated pyrrhotite, less pyrite and traces of chalcopyrite 277.2-277.4							

DIAMOND DRILL RECORD

NAME OF PROPERTY Henderson
 HOLE NO. 9 LENGTH _____
 LOCATION _____
 LATITUDE _____ DEPARTURE _____
 ELEVATION _____ AZIMUTH _____ DIP _____
 STARTED _____ FINISHED _____

FOOTAGE	DIP	AZIMUTH	FOOTAGE	DIP	AZIMUTH

HOLE NO. 9 SHEET NO. 2/2
 REMARKS _____
 LOGGED BY M. Morin

LANGRIDGE LIMITED, 106 RICHMOND STREET WEST, TORONTO, ONT. EM. 6-1188

FOOTAGE		DESCRIPTION	SAMPLE			ASSAYS			
FROM	TO		NO.	SUB- SIZES	FOOTAGE FROM TO TOTAL	%	%	OZ/TON	OZ/TON
273	285	Limestone becoming coarse grained in the last 6 feet; biotite-rich 275-279							
285	304	Permotite							
		End of hole							
		<i>Marcus Morin, Eng 16-8-68</i>							

DIAMOND DRILL RECORD

NAME OF PROPERTY Henderson
 HOLE NO. 10 LENGTH 204
 LOCATION _____
 LATITUDE 30+00N DEPARTURE 4+25W
 ELEVATION _____ AZIMUTH 207 DIP 60
 STARTED Jun. 22, 1968 FINISHED Jun. 23

FOOTAGE	DIP	AZIMUTH	FOOTAGE	DIP	AZIMUTH

HOLE NO. 10 SHEET NO. 1/1

REMARKS _____

LOGGED BY M. Morin

LANGRIDGE LIMITED, 106 RICHMOND STREET WEST, TORONTO, ONT. EM. 6-1168

FOOTAGE		DESCRIPTION	SAMPLE			ASSAYS			
FROM	TO		NO.	SIZE INCHES	FOOTAGE FROM TO TOTAL	%	%	OZ/TON	OZ/TON
0	10	Casing							
10	26.5	Biotite quartzite with disseminated pyrrhotite and occasional pyrite; rare chalcopyrite specks; 16'-85°; 26'-25°							
26.5	43.8	Mixed limestone and alteration calc-silicate rock- less pyrrhotite and pyrite than above; 38'-65°							
43.8	45.8	Pegmatite; R: 60							
45.8	67.4	Micaceous quartzite with few limestone layers; disseminated pyrrhotite and some pyrite; rare chalcopyrite 48'-70°; 53'-55°; 63'-60°							
67.4	68.6	Pegmatite; R: 60							
68.6	83.6	Limestone with micaceous partings; 73'-65°							
83.6	125	Micaceous quartzite with some carbonate layers; minor disseminated pyrrhotite; 83'-80°; 88'-85°; 99'-75°; 104'-80°; 114'-75° 124'-80°							
125	144.6	Limestone and calc-silicate layers							
144.6	155	Biotite schist - layered; 147'-60°; 153'-65°							
155	179	Quartzite with mica-rich layers and limestone; 162'-75°; 174'-80°;							
179	204	Biotite-amphibole schist- layered with small amount of disseminated pyrrhotite and rare specks of chalcopyrite at 199'; 192'-80°; 198'-80°; 203'-80°							
		End of hole							

M. Morin, Eng
16-8-68

DIAMOND DRILL RECORD

NAME OF PROPERTY Henderson
 HOLE NO. 11 LENGTH 309
 LOCATION _____
 LATITUDE 30+00N DEPARTURE 3+00W
 ELEVATION _____ AZIMUTH 295 DIP 45
 STARTED Jun. 25, 1968 FINISHED Jun. 26

FOOTAGE	DIP	AZIMUTH	FOOTAGE	DIP	AZIMUTH

HOLE NO. 11 SHEET NO. 1/1

REMARKS _____

LOGGED BY M. Morin

LANGRIDGE LIMITED, 106 RICHMOND STREET WEST, TORONTO, ONT. EM. 6-1168

FOOTAGE		DESCRIPTION	SAMPLE			ASSAYS			
FROM	TO		NO.	SULPHIDES	FOOTAGE FROM TO TOTAL	%	%	OZ/TON	OZ/TON
0	16	Casing							
16	22.9	Biotite schist; disseminated sulphides and fracture coatings (mainly pyrrhotite)							
22.9	28	Grey limestone; 23°-67°							
28	152.6	Biotite schist with some calc-silicate layers; dip reversals on core; 29°-65°; 32°-60°; 48°-55°(reversal at 47°-65°); 53°-75°; 63°-75°; 73°-70°; 83°-75°; 93°-60° Lost core 77-78; 90.4-91.3 Massive pyrrhotite stringers 95-96.2 with minor chalcopyrite 143.8-146.7 - Pegmatite R:42-60 Coarse quartz with disseminated pyrrhotite 114-119 Disseminated pyrrhotite 120-124 102°-65°; 113°-65°; 122°-60°; 134°-70°; 147°-85°							
152.6	154.4	Grey, medium-grained pegmatite; low radio.							
154.4	159.8	Biotite schist							
159.8	161.2	Pegmatite R:170							
161.2	167.2	Lost core							
167.2	168	Pegmatite R: 120							
168	213	Biotite schist with calcareous zones; disseminated pyrrhotite Pegmatite 203.1 - 203.9 R:45 178°-80°; 188°-75°; 200°-75°; 208°-75°							
213	226	Grey limestone; with few, narrow, mafic stringers; minor pyrrhotite with pyrite							
226	236	Biotite schist; minor sulphides; 227°-70°							
236	238	Grey pegmatite R:32							
238	239	Biotite schist							
239	242	Grey, feldspar pegmatite R:35; Lost core 240-241							
242	248.3	Biotite schist with narrow, grey, pegmatitic stringers 247°-85°							
248.3	263.5	Quartz-rich, grey pegmatite; R 30-36							
263.5	309	Biotite schist; narrow, pegmatitic stringers in upper part of section; pyrrhotite stringers with few chalcopyrite specks at 293°; 268°-85°; 283°-85°; 297°-85°; 301°-85°							

End of hole

16-8-68

Morin

DIAMOND DRILL RECORD

NAME OF PROPERTY Henderson
 HOLE NO. 12 LENGTH 215
 LOCATION _____
 LATITUDE 28°00N DEPARTURE 4400W
 ELEVATION _____ AZIMUTH 295 DIP 45
 STARTED _____ FINISHED _____

FOOTAGE	DIP	AZIMUTH	FOOTAGE	DIP	AZIMUTH

HOLE NO. 12 SHEET NO. 1/1

REMARKS _____

LOGGED BY M. Morin

LANGRIDGE LIMITED, 106 RICHMOND STREET WEST, TORONTO, ONT. EM. 6-1168

FOOTAGE		DESCRIPTION	SAMPLE			ASSAYS					
FROM	TO		NO.	% SULPHIDES	FOOTAGE		%	%	oz/TON	oz/TON	
					FROM	TO	TOTAL				
0	6.3	Casing									
6.3	48.3	Limestone- mainly massive with garnetiferous and micaceous layers; minor pyrrhotite; white coarse-grained pegmatite 21-22; R:40; 33.3-35; R:70; 46.8-48.3; R:30 cps. 55°; 48°-75°									
48.3	59.2	Mica schist; coarse-grained pegmatite 57-57.7; R:32 cps. 60°									
59.2	64.5	Coarse-grained pegmatite with pyrrhotite patches and garnetiferous inclusions; minor chalcopyrite; R:60 cps. for 2 feet and remainder 36-40 cps.									
64.5	121.6	Biotite schist with layers of quartzite; white pegmatite with pyrrhotite clot and traces of chalcopyrite from 98.5-99 and 90.7-91; 71°-70°; 82°-80°; 93°-70°									
121.6	127.6	Coarse-grained pegmatite with mica flakes; R:1° at 44 cps.; 1 1/2 -t 76 cps. and 1° at 44 cps.									
127.6	184	Limestone with narrow biotite schist layers; bottom of section shows quartzitic layers; pyrrhotite with traces of chalcopyrite at 168, 173 and 185.6 137°-90°; 157°75°; 167°-75°									
184	215	Biotite schist with quartzitic layers; minor pyrrhotite 192°-75°; 203°-65°; 214°-90°									
		End of hole									

Morin
16-8-68

DIAMOND DRILL RECORD

NAME OF PROPERTY Henderson
 HOLE NO. 13 LENGTH 302.5
 LOCATION _____
 LATITUDE 31+00N DEPARTURE 2+25W
 ELEVATION _____ AZIMUTH 205 DIP 45
 STARTED _____ FINISHED _____

FOOTAGE	DIP	AZIMUTH	FOOTAGE	DIP	AZIMUTH

HOLE NO. 13 SHEET NO. 1/1

REMARKS _____

LOGGED BY M. Morin

FOOTAGE		DESCRIPTION	SAMPLE				ASSAYS				
FROM	TO		NO.	% SULPHIDES	FOOTAGE			%	%	OZ/TON	OZ/TON
					FROM	TO	TOTAL				
0	14	Casing									
14	74	Biotite schist; disseminated pyrrhotite with traces of chalcopyrite; 25% from 40-50 and 51-52; Calcareous and quartzitic layers 18°-80°; 20°-65°; 57°-80°; 38°-85°									
75	88	Micaceous quartzite with pyrrhotite stringers and disseminated									
	78	70°									
88	103.5	Limestone									
103.5	105.3	Quartz-feldspar pegmatite; R:40cms.									
105.3	141.3	Biotite schist or quartzite with disseminated pyrrhotite, minor pyrite and less chalcopyrite; few sections up to 25% sulphides 123°-35°; 120°-60°									
141.3	143.5	Pegmatite; R:40-50 cms.									
143.5	302.5	Biotite schist or quartzite with disseminated pyrrhotite to 150'; Limestone and quartzite layers; few specks of chalcopyrite at 298'; 147°-65°; 157°-65°; 166°-65°; 178°-70°; 192°-75°; 202°-70°; 212°-75°; 222°-80°; 233°-75°; 247°-80°; 257°-75°; 273°-75°; 283°-75°; 292°-70°									
		End of hole									

LANGRIDGE LIMITED, 106 RICHMOND STREET WEST, TORONTO, ONT. EM. 6-1168

M. Morin, Eng
16-8-68

DIAMOND DRILL RECORD

NAME OF PROPERTY Henderson
 HOLE NO. 14 LENGTH 441
 LOCATION _____
 LATITUDE 28+00N DEPARTURE 0+75E
 ELEVATION _____ AZIMUTH 300 DIP 45
 STARTED _____ FINISHED _____

FOOTAGE	DIP	AZIMUTH	FOOTAGE	DIP	AZIMUTH

HOLE NO. 14 SHEET NO. 1/1

REMARKS _____

LOGGED BY M. Morin

LANGRIDGE LIMITED, 108 RICHMOND STREET WEST, TORONTO, ONT. EM. 6-1188

FOOTAGE		DESCRIPTION	SAMPLE			ASSAYS			
FROM	TO		NO.	SULPHIDES	FOOTAGE FROM TO TOTAL	%	%	OZ/TON	OZ/TON
0	10	Casing							
10	12	Biotite schist							
12	48	Pegmatite with coarse biotite and hornblende; R; 40-50 -12-25° 60-170 from 25-48; 60-300 from 53-75°							
48	55.7	Biotite schist with pegmatite stringers; 53°-70°							
55.7	83.5	Pegmatite R; 56-180							
83.5	90	Fine-grained biotite schist; 88°-30°							
90	93.5	Quartz-feldspar pegmatite; R: 50-60							
93.5	128.6	Biotite schist with disseminated pyrrhotite and stringers; minor quartzitic layers; 50% sulphide (pyrrhotite) for 3 in. at 85°6" 102°-80°; 118°-90°; 128°-80°							
128.6	134.9	Quartz-feldspar pegmatite; R: 30-45							
134.9	158.9	Biotite schist with thin amphibole-biotite layers and quartzitic layers; 143°-90°; 152°-90°							
158.9	170.2	Quartz-feldspar pegmatite; R: 36-40 cps.							
170.2	390	Biotite schist with quartzitic layers and minor pyrrhotite with specks of chalcopryrite; pegmatite 3 in. 233.1; 247.5-248.5; 252.5-253.8; Quartz-feldspar veins with pyrrhotite and chalcopryrite specks 273.-273.2 Lost core 185-186 177°-90°; 187°-80°; 202°-85°; 212°-80°; 222°-85°; 232°-85°; 242°-90°; 252°-75°; 267°-90°; 277°-80°; 292°-80°; 302°-80°; 312°-80°; 322°-80°; 332°-65°; 347°-70°; 357°-65°; 368°-75°; 368°-75°; 377°-75°; 387°-70°							
390	399	Limestone; 398°-85°; pyrrhotite and chalcopryrite in a quartz vein (2 in.) at 390°; minor pyrrhotite in section							
399	403.1	Biotite schist with minor pyrrhotite disseminated; pegmatite stringer (2 in. at 412°)							
403.1	413.6	Quartz-feldspar pegmatite with occasional garnet; low radioactivity							
413.6	441	Biotite schist with narrow limestone layers; pyrrhotite at 430°; Quartz-feldspar pegmatite 419-421; R: 40 cps. Quartz veins at 424° and 436.6. 422°-75°; 436°-70°							
		End of hole							

M. Morin Eng 16-8-68

DIAMOND DRILL RECORD

NAME OF PROPERTY Henderson
 HOLE NO. 15 LENGTH 293
 LOCATION _____
 LATITUDE 22+00N DEPARTURE 0+50E
 ELEVATION _____ AZIMUTH 295 DIP 450
 STARTED July 15, 1968 FINISHED July 17

FOOTAGE	DIP	AZIMUTH	FOOTAGE	DIP	AZIMUTH

HOLE NO. 15 SHEET NO. 1/1

REMARKS _____

LOGGED BY M. Morin

FOOTAGE		DESCRIPTION	SAMPLE			ASSAYS					
FROM	TO		NO.	% SULPHIDES	FOOTAGE		%	%	OZ/TON	OZ/TON	
					FROM	TO	TOTAL				
0	18	Casing									
18	94.5	Pegmatite; mafic zones 18-21.5 - Rad. 70-78 cps. Pyrite at 31.5; Lost core 34-36; 74-75									
94.5	106.3	Biotite schist									
	99	65°									
106.3	179	Coarse pegmatite with variable mica content; narrow sections with pyrite - Biotite schist inclusions 111.2-114; 125.3-127; 129-130 Rad variable: 38 - 88 cps.									
179	198.3	Micaceous quartzite with disseminated pyrrhotite									
198.3	206.6	Coarse pegmatite									
206.6	210	Amphibole-biotite gneiss - Lost core 207.3-208.5; 209-210									
	207	85°									
210	220	Pegmatite with variable mica content - poor recovery Lost core 212-213.2; 213.7-216.2									
	217	90°									
220	226	Amphibole-biotite gneiss - Lost core 223-224.6									
226	229.3	White, coarse pegmatite									
229.3	263.5	Amphibole-biotite gneiss- Lost core: 233.8-235; 240.1-241.6; 247.7-249.5 Core angle: 229-85°; 243-75°; 253-80°; 263-75°									
263.5	270	Coarse, white pegmatite									
270	273	Micaceous quartzite									
	272	90°									
273	293	Biotite schist- 283-75°; 292-80°									
End of hole											
<i>Marc Morin, Eng</i> 16-8-68											

DIAMOND DRILL RECORD

NAME OF PROPERTY Henderson
 HOLE NO. 16 LENGTH 273'
 LOCATION 105° SE of 0+75E - Line 28E
 LATITUDE _____ DEPARTURE _____
 ELEVATION _____ AZIMUTH 300° DIP 45°
 STARTED July 12, 1968 FINISHED July 13, 1968

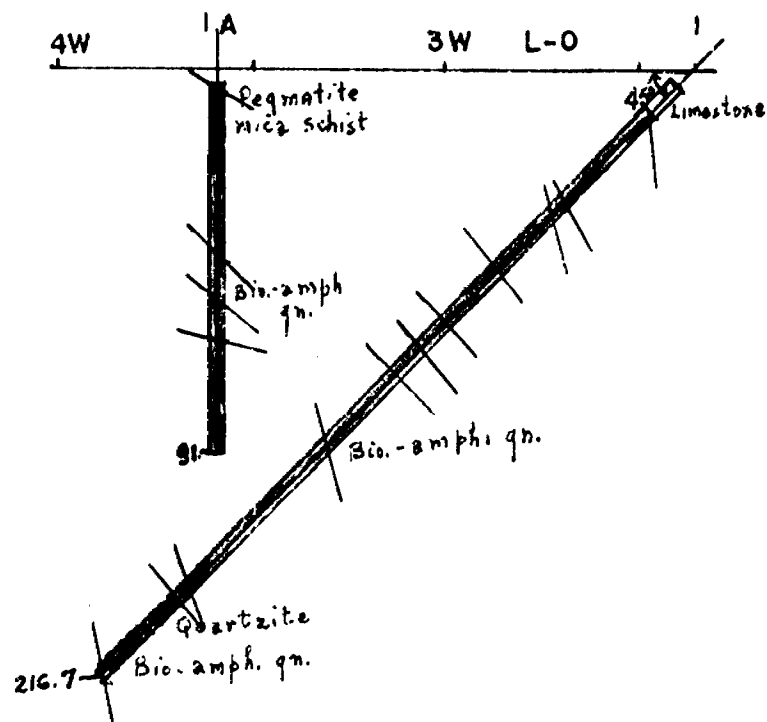
FOOTAGE	DIP	AZIMUTH	FOOTAGE	DIP	AZIMUTH

HOLE NO. 16 SHEET NO. 1/1

REMARKS _____

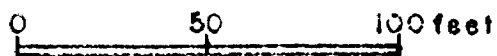
LOGGED BY M. Morin

FOOTAGE		DESCRIPTION	SAMPLE				ASSAYS				
FROM	TO		NO.	% SULPHIDES	FOOTAGE FROM	FOOTAGE TO	FOOTAGE TOTAL	%	%	OZ/TON	OZ/TON
0	9	Casing									
9	22.4	Hornblende-biotite gneiss- last foot injected by pegmatite; some layers with red garnet; Core angle 12°-75°; 21°-70°									
22.4	104	Pegmatite - variable mica content with some amphibole; Lost core 57-58; 59.3-61; 67-68; 70.70.7									
104	273	Biotite schist mixed with amphibole gneiss and layers of quartzite; pyrrhotite stringers at 113, 118, 126.8 and 147-Quartz vein 6" at 188- Calcite veins along core at 199.5. Core angle: 112-90°; 122-75°; 132-85°; 142-80°; 152-90°; 162-80°; 172-90°; 182-85°; 192-85°; 207-85°; 223-60°; 233-70°; 243-70°; 258-75°; 271-80°									
		End of hole									
		<i>Marc Morin, Eng.</i> <i>16-8-68</i>									



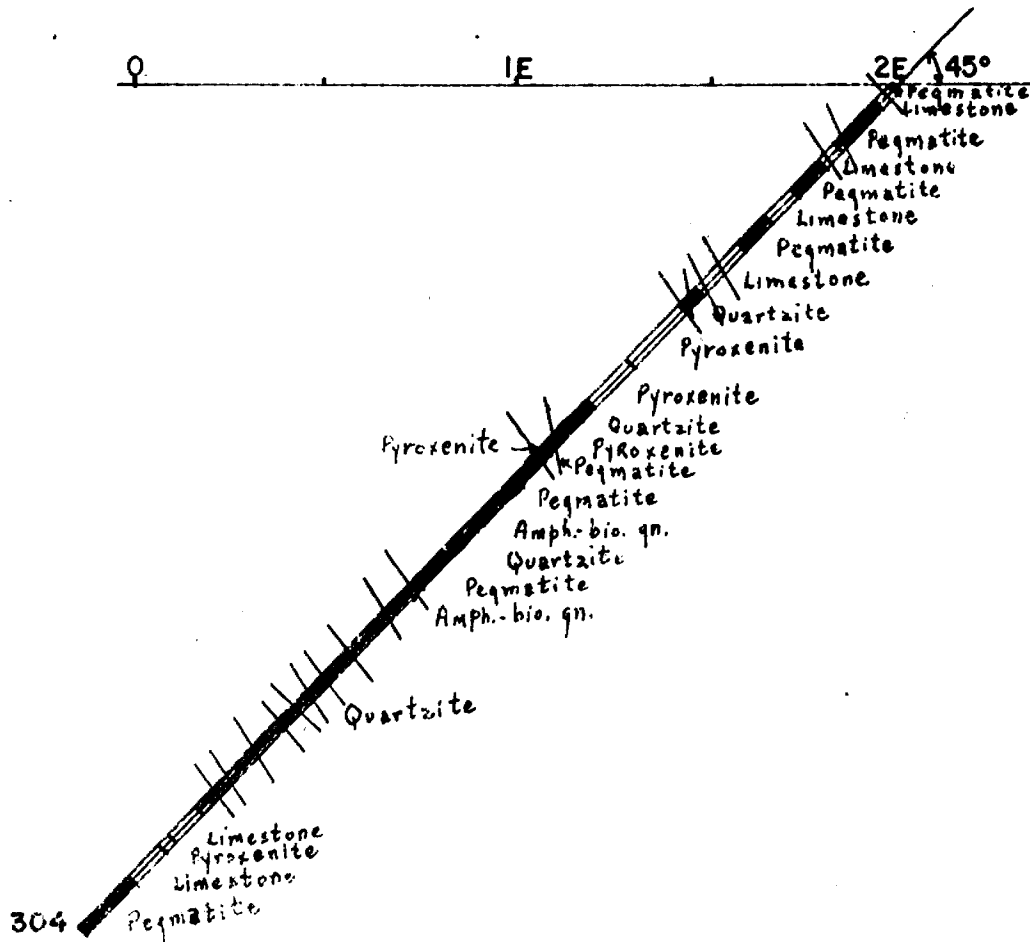
MERLAND OIL CO. OF CANADA LTD.

D.D.H. 1 & 1A



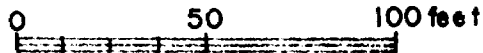
W. J. ...

0 1E 2E 145° L-10+50N



MERLAND OIL CO. OF CANADA LTD.

D.D.H. 9



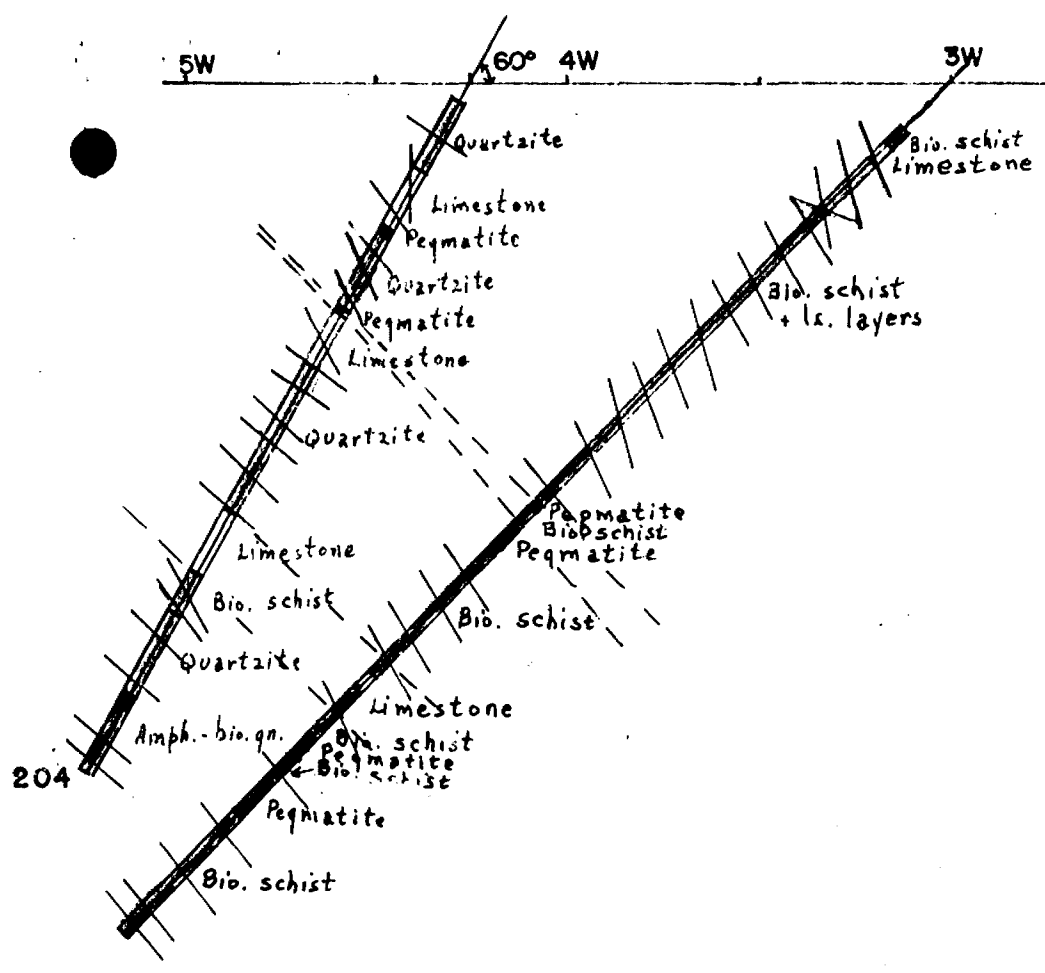
Murray Morrison, Eng.

5W

60° 4W

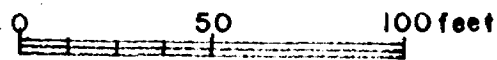
3W

L-30N

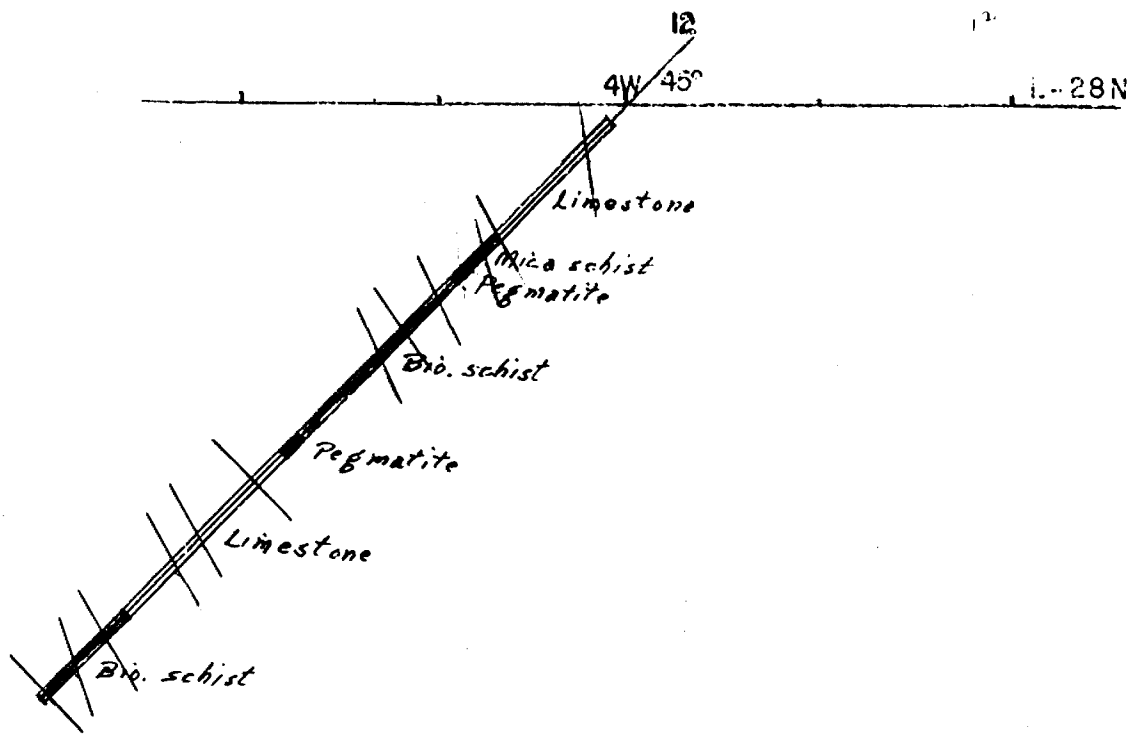


MERLAND OIL CO. OF CANADA LTD.

D.D.H. 10 & 11

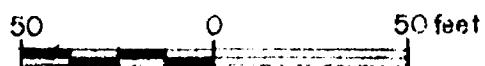


Walter Morris, Eng.

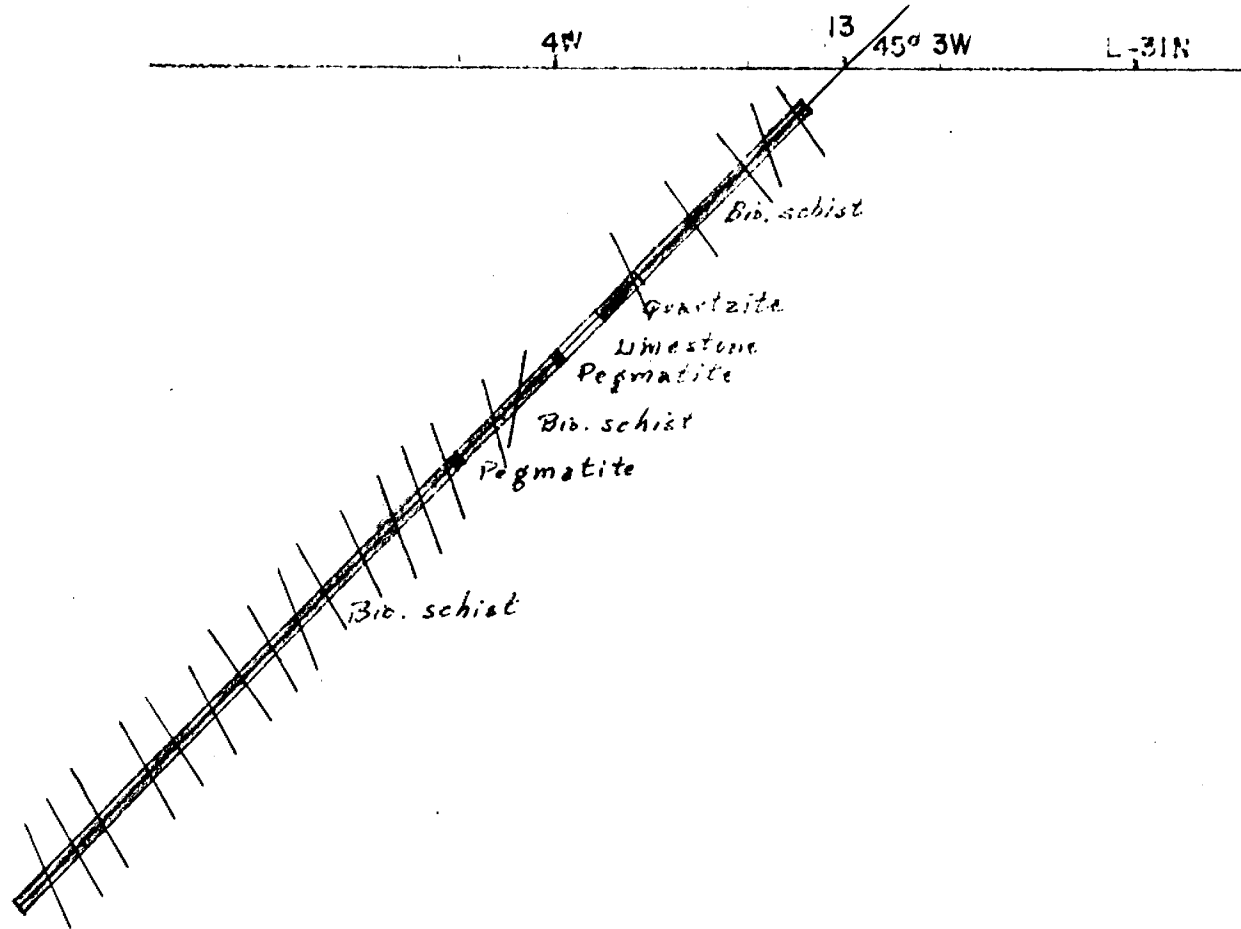


MERLAND OIL CO. OF CANADA LTD.

D. D. H. 12

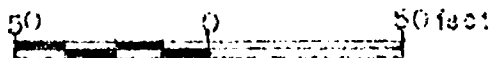


Marcus J. Brown, Eng.

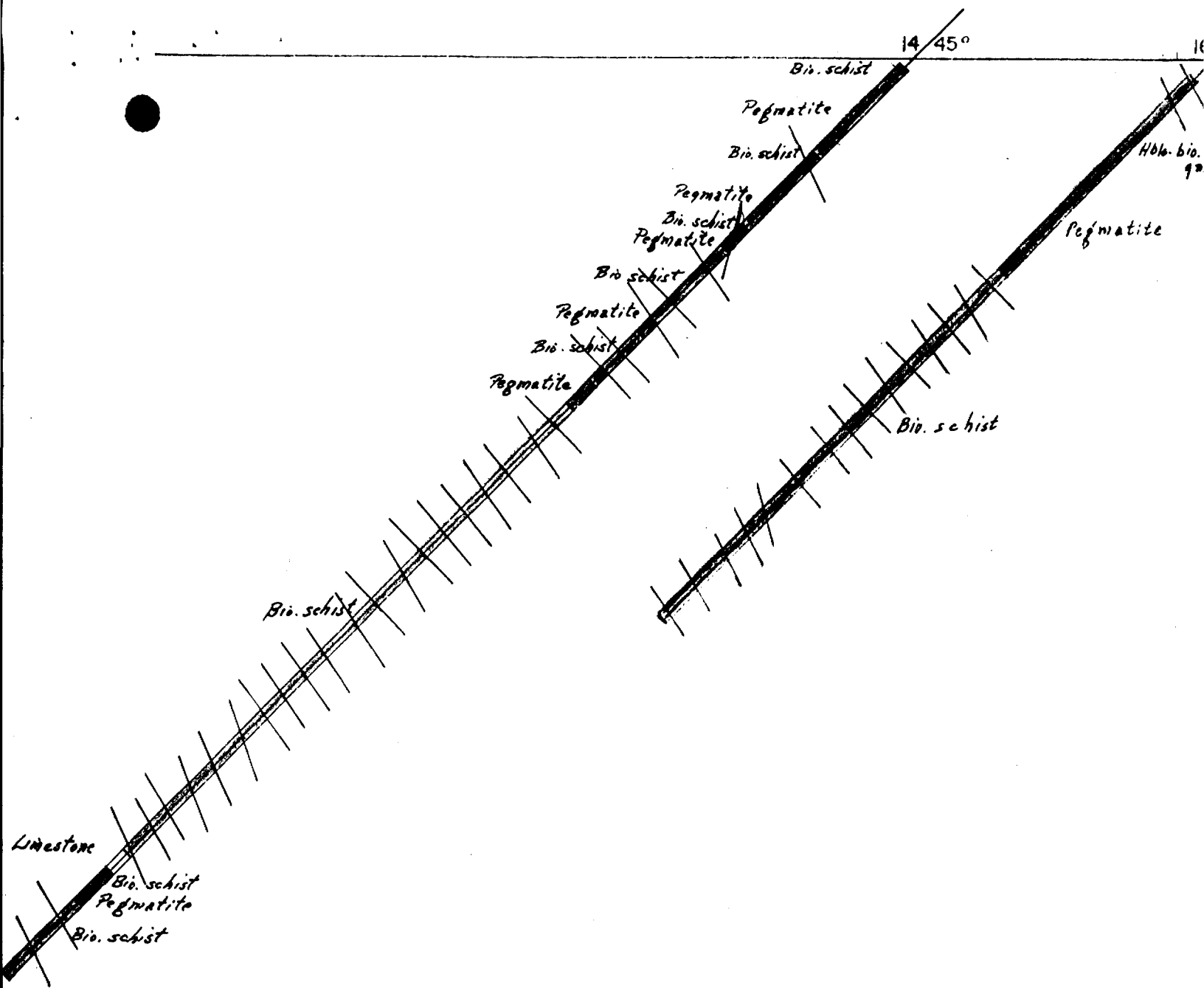


MERLAND OIL CO. OF CANADA LTD.

D.B.H. 13



Mineral Mining Dept

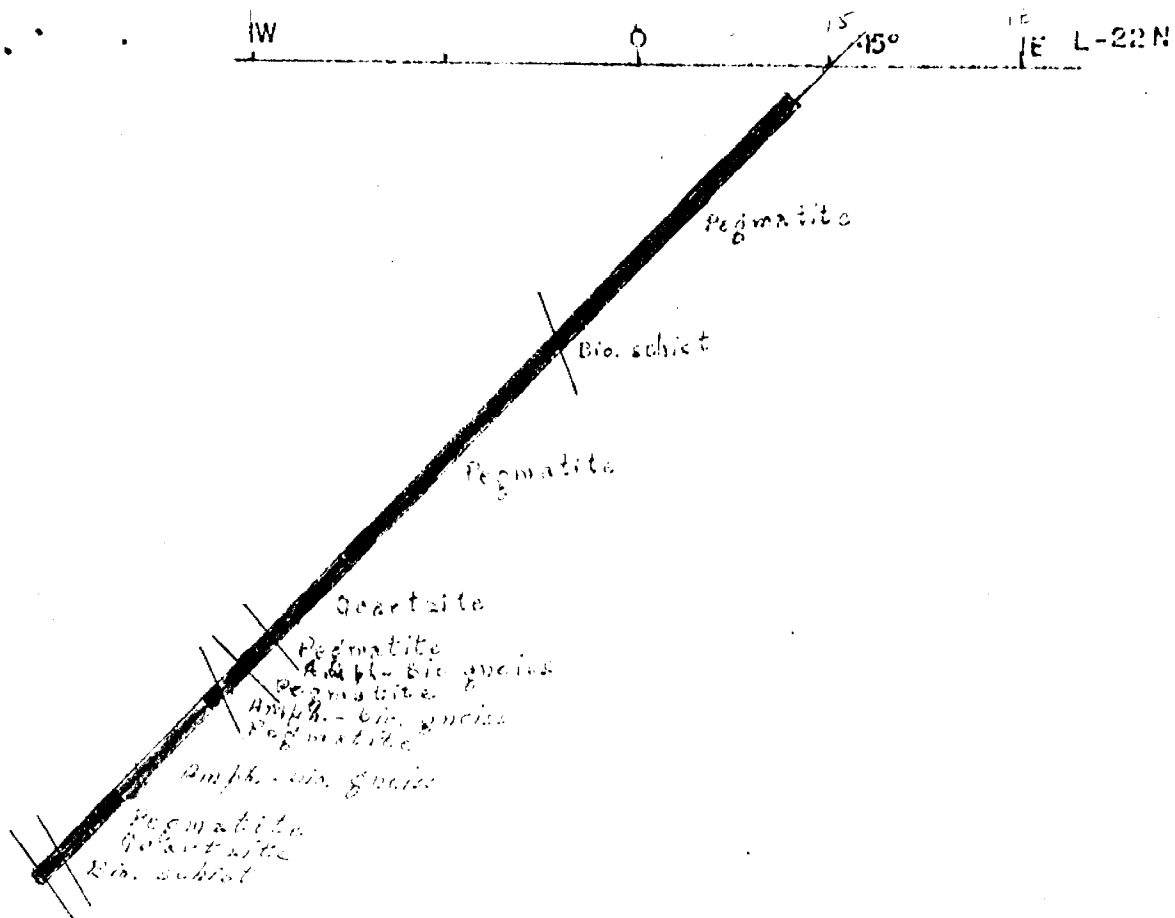


MERLAND OIL CO. OF CANADA LTD.

D.D.H 14 & 16

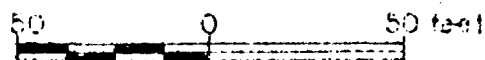


Marcus Morris, Eng



MERLAND OIL CO. OF CANADA LTD.

D.D.H. 15



Merland Oil Co. Ltd., Eng.