

31F03SW0001 2.16038 EFFINGHAM

010

PROSPECTING REPORT

for the year 1994

2.16038

on

**Mining Claim SO 1150872 (two units), Lot 15 South Half and Lot 16 South Half,
Concession XI, Monmouth Township, Haliburton County,
Southern Ontario Mining Division**

for

**Sharpmin Developments Incorporated
Suite 407 - 153 St. George Street, Toronto, Ontario M5R 2L9**

Report Author:



**Scott Harper, Hon. B. Sc., M. Sc. Cand.
Geologist
Toronto, Ontario**

May 1995

Dates and Descriptions of Property Visits

May 24, 1994 1/2 day, myself with E. Gallo, geologist

Oct 25, 1994 1 day, myself with T. Levey and Dr. Van Loon

Oct 30, 1994 1/2 day, myself with M. Harper, used Argo and diamond bladed concrete saw

On the first two visits the geology was examined with other geologists (calcite veins containing amphibole, apatite, biotite, microcline, titanite) within paragneiss (quartzite, marble, amphibolite and quartzo-feldspathic gneiss). Minor sampling was done during both visits. The calcite veins are enigmatic. They are possibly carbonatitic. The large size of the veins (several metres wide) and their coarse grain size (amphiboles up to approximately 1 metre long) are difficult to explain geologically.

On the third visit several selected samples were taken for mineralogical studies. These samples have been submitted to Dept. of Geology, University of Toronto. Results are pending.

All visits were to the south side of the trail that traverses the property in an east-west direction, in the area indicated on the attached map.

List of Personnel

M. Harper, prospector, 1195 Nuforest Drive, Ennismore, Ontario K0L 1T0
Telephone (705) 292-9423

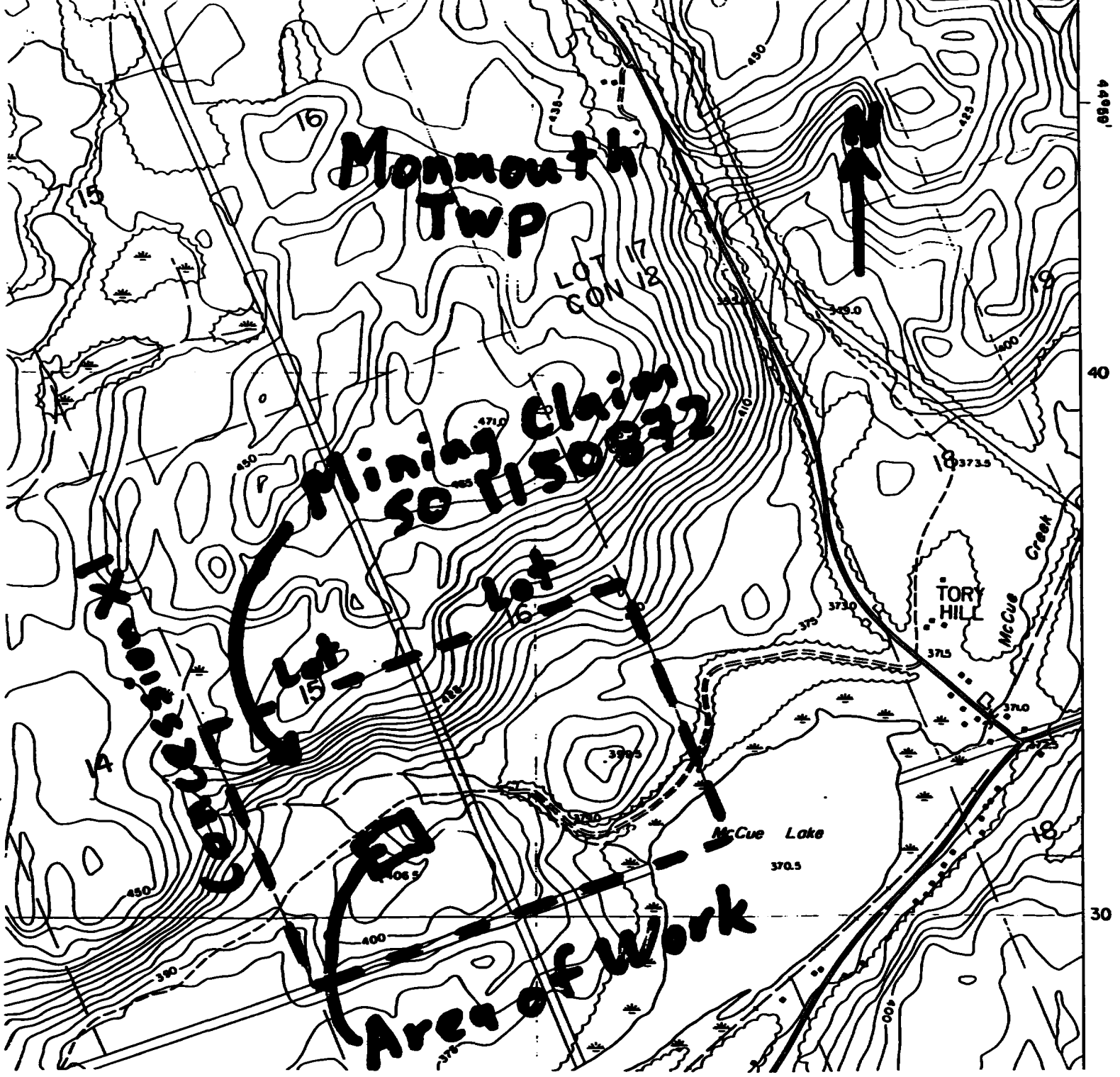
T. Levey, prospector, #278-1027 Davie St., Vancouver, B. C. V6E 4L2

E. Gallo, consulting geologist, Toronto, Ontario

Dr. J. C. Van Loon, geologist, Professor, Department of Geology, University of Toronto,
Toronto, Ontario M5S 3B1 Telephone (416) 978-5612

Statement of Cost

Transporation	
Toronto-Property-Toronto (453.2km X 3trips X \$0.30/km)	\$407.88
Equipment Rental	
ATV + Trailer @ \$125/day each X 1/2 day	250.00
Concrete Saw include diamond blade @45/day	45.00
Wages	
@150/day/person	600.00
Food	45.00
Total	\$1222.88



Scale 1:10 000 Échelle

500 0 500 1000
Mètres

1000 0 1000 2000 3000 4000 5000
Feet

Contour interval 5 metres

Équidistance des courbes 5 mètres

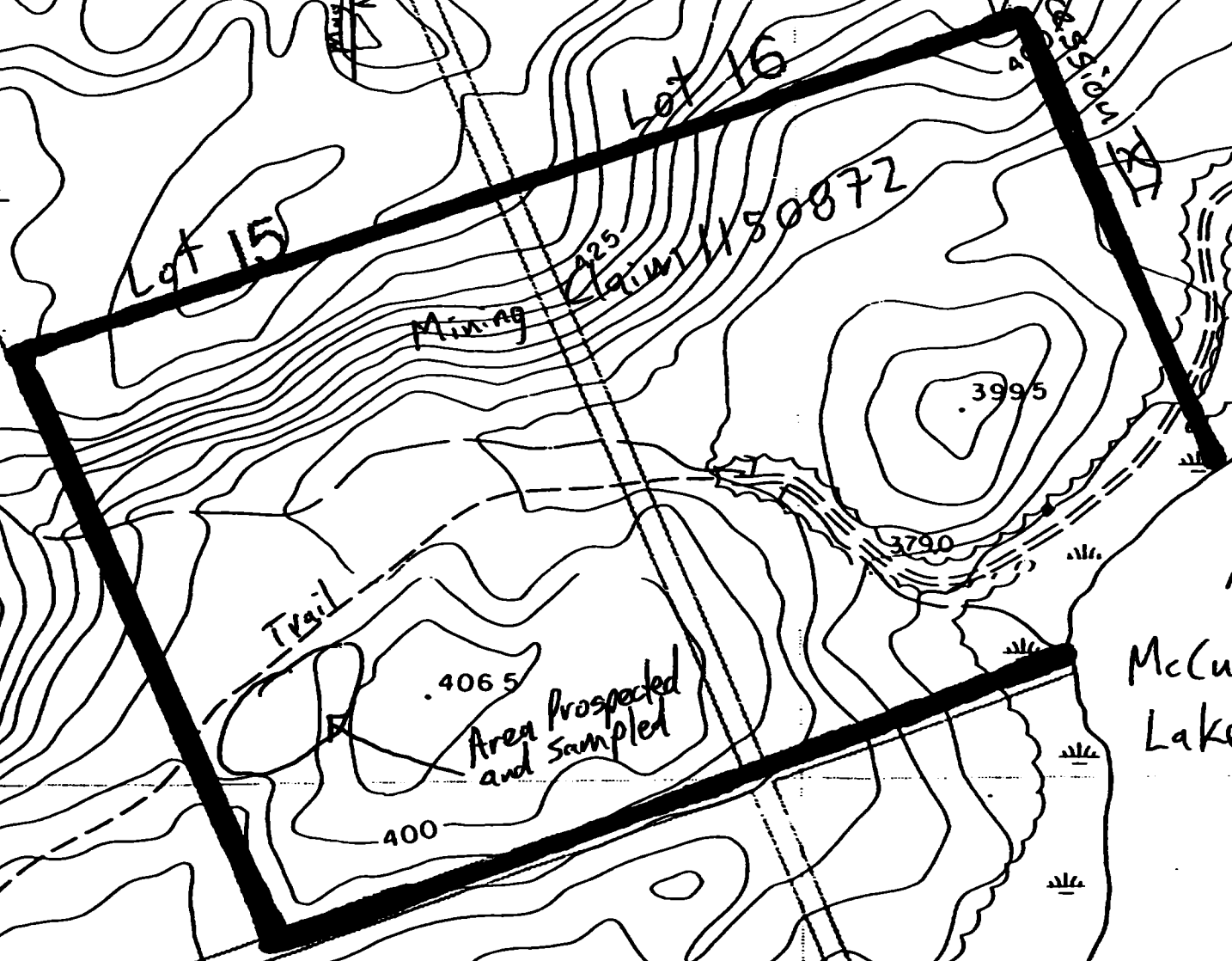
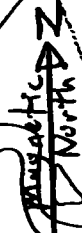
DIGITAL MAPPING

CARTOGRAPHIE NUMÉRIQUE

MNR OBM 10177100 49800

Monmouth Township
Scale 1:5000

2.16038



Lot 15

Lot 16

Mining

Claim 1150872

Trail

Area Prospected
and Sampled

CON
SECTION

McCue
Lake

450

375

3995

3790

400

3730

3830



31F03SW0001 2.16038 EFFINGHAM

020

2.16038

GEOLOGICAL REPORT

on

**Mining Claim SO 1150872 (two units), Lot 15 South Half and
Lot 16 South Half, Concession XI, Monmouth Township,
Haliburton County, Southern Ontario Mining Division**

for

**Sharpmin Developments Incorporated
Suite 407, 153 St. George Street, Toronto, Ontario M5R 2L9**

Report Authors:

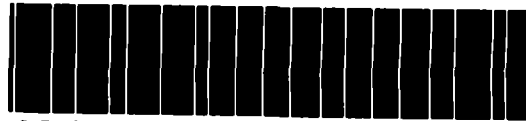
Oliver Bolton

**Oliver B. Bolton, Hon. B. Sc.,
3 Jean Street, Toronto, Ontario M4W 3A6, and**

Scott E. Harper

**Scott E. Harper, Hon. B. Sc., M. Sc. Cand.,
#407-153 St. George Street, Toronto, Ontario M5R 2L9**

August 1994



31F03SW0001 2.16036 EFFINGHAM

TABLE OF CONTENTS

020C

INTRODUCTION	
1.1 LOCATION	4
1.2 ACCESS	4
1.3 PROPERTY	4
1.4 PHYSIOGRAPHY, VEGETATION AND WILDLIFE	7
1.5 HISTORY AND PREVIOUS WORK	7
GEOLOGY AND OBSERVATIONS	
2.1 REGIONAL GEOLOGY	8
2.2 LOCAL GEOLOGY	8
2.3 HAND SAMPLE DESCRIPTIONS	10
CONCLUSIONS AND RECOMMENDATIONS	12
REFERENCES	13
STATEMENT OF COST	14
STATEMENT OF QUALIFICATIONS (S. HARPER)	15
STATEMENT OF QUALIFICATIONS (O. BOLTON)	16

LIST OF FIGURES

Property Location Map	5
Claim Location Map	6
Detailed Geology Map	back pocket

INTRODUCTION

1.1 LOCATION

The property consists of a single mining claim of two units having mining claim number SO 1150872. The mining claim is located on Lot 15 South half, and Lot 16 South half, Concession XI, Monmouth Township (G-1298), Haliburton County, Southern Ontario Mining Division at Latitude 44°58' 40" N and Longitude 78°17' 23" W, UTM 713008mE, 4983003mN, Zone 17, NTS 31 D/16 (Gooderham). Figure 1 shows the mining claim location within southern Ontario.

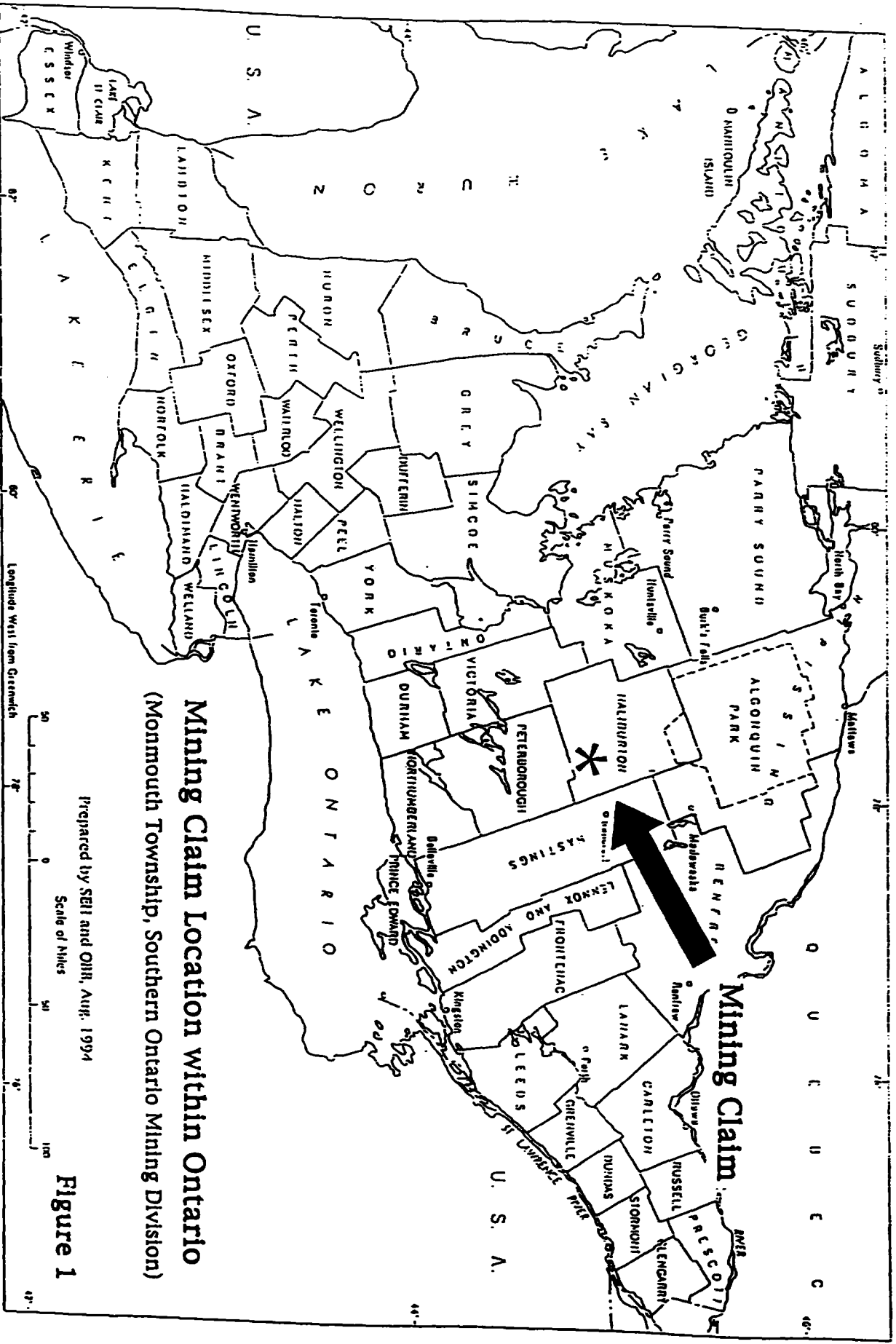
1.2 ACCESS

There is good road access to the mining claim. To reach the property travel north on Highway 121 from the village of Tory Hill for 0.2 km to Gibson Road. Turn left onto Gibson Road and continue for 0.95 km (Sabina, 1986). At this point the road deteriorates and is only suitable for vehicles with high clearance. Continue for another 460 metres. Most of the showings are located to the south (left) of the road.

1.3 PROPERTY

The property consists of a single mining claim SO 1150872 that comprises two mining units (500mN-S X 800m E-W). The mining claim is located on the south halves of Lots 15 and 16, Concession XI, Monmouth Township (G-1298), Haliburton County, Southern Ontario Mining Division (Figure 2). The mining claim was staked by S. Harper and O. Bolton, both of Toronto, on September 2, 1992 and recorded on October 2, 1992 for Sharpmin Developments Incorporated, 153 St. George Street, Suite 407, Toronto, Ontario M5R 2L9, Telephone/FAX (416) 961-5041. The surface rights are privately owned by E. Bradamore, Box 603, Minden, Ontario, K0M 2K0; R. and W. Andrew, 24 Strathy Road, Ajax, Ontario, L1S 2V1; D. Cowle, 309 Elgin Street East, Oshawa, Ontario, L1G 1T5; and P. Madill, Box 136, Londesborough, Ontario, N0M 2H0. The surface rights owners were advised of intention to perform assessment work in the fall of 1992.

During claim staking it was found that the southern boundary of Lots 15 and 16 had been recently surveyed.



Mining Claim Location within Ontario
 (Mornmouth Township, Southern Ontario Mining Division)

Prepared by SEI and OHR, Aug. 1994

Scale of Miles

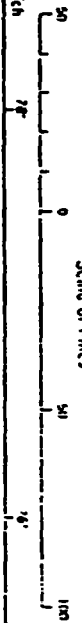
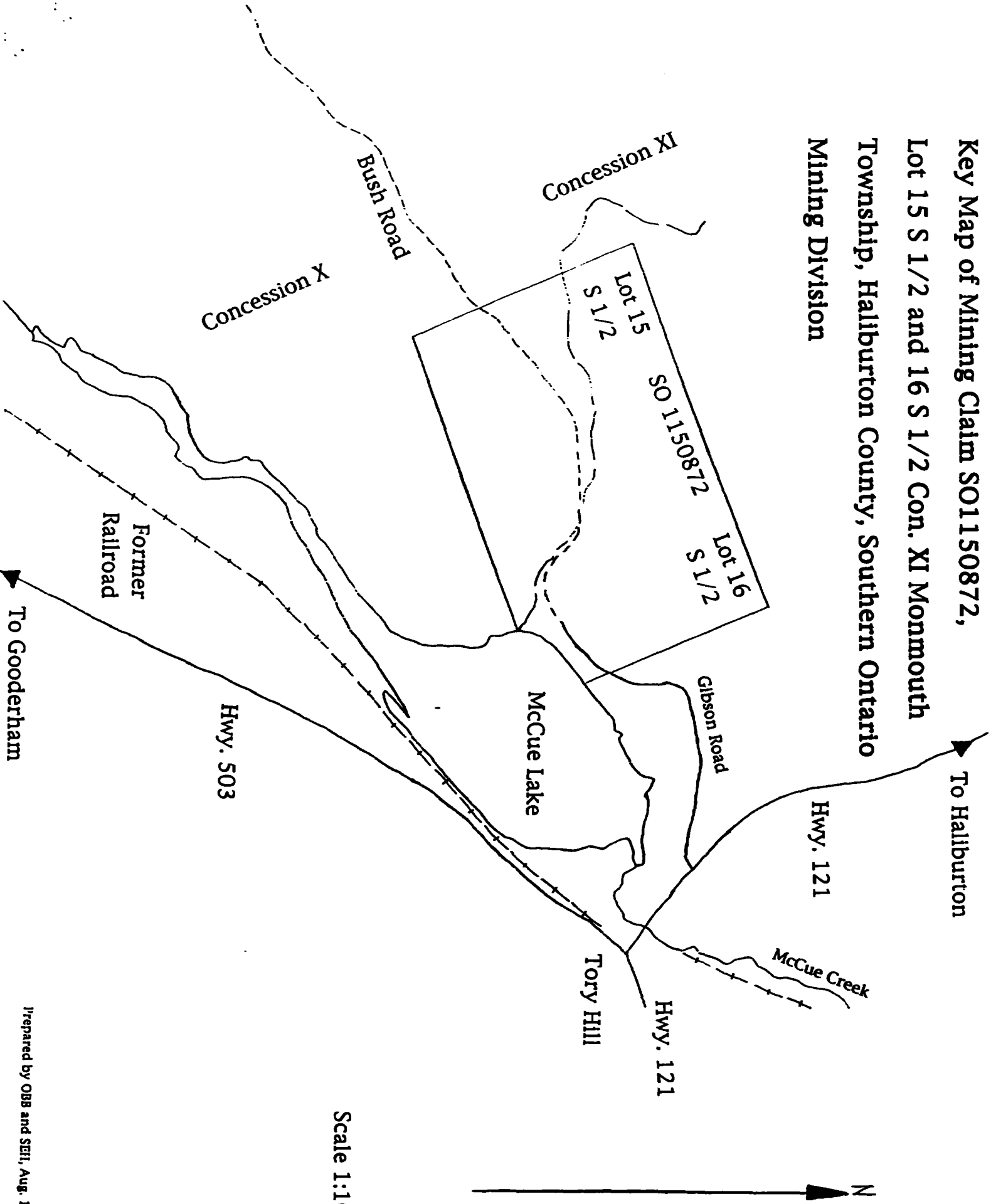


Figure 1

**Key Map of Mining Claim SO1150872,
 Lot 15 S 1/2 and 16 S 1/2 Con. XI Monmouth
 Township, Haliburton County, Southern Ontario
 Mining Division**



Scale 1:10 000

Figure 2
6

Prepared by OBB and SEI, Aug. 1994

1.4 PHYSIOGRAPHY, VEGETATION AND WILDLIFE

The property consists of land with moderate relief. Low areas are swampy and the property borders McCue Lake at the southeastern corner. An intermittent stream crosses the property from the northwest to the southeast corner exiting into McCue Lake. The lowest elevation on the property is along the southeastern corner (approximately 370 metres). The highest elevation is along the northern boundary of the property where an east-northeast trending ridge occurs. This ridge has an elevation of approximately 440 metres.

The property is tree covered. The trees are primarily hardwoods consisting mostly of small to medium sized maple. Spruce and cedar occupy low areas. The spruce are commonly 6 to 10 feet high and very abundant, obscuring the geology, pits, trenches and the adit.

A black bear was encountered during claim staking. A few deer tracks, several ruffed grouse and a few toads were observed during mapping.

The climate is typical of south-central Ontario with warm relatively dry summers and mild accumulations of snow in the winters.

1.5 HISTORY AND PREVIOUS WORK

The mining claim contains several pits and trenches. These were excavated around the turn of the century during exploration for phosphate.

In the southwest corner of the property there are several pits, trenches and an adit. The adit has been driven 30 feet north into the side of a hill (Satterly, 1943, p. 20; Armstrong and Gittins, 1968).

In 1976 Imperial Oil Limited conducted a geological and radiometric survey for uranium which included Lot 15, Concession XI (Lowe, 1977).

Sharpmin Developments Incorporated performed minor assessment work between July 28 and August 8, 1993. This work consisted of minor excavation and geological sampling.

No additional assessment files were found on record at the Ministry of Northern Development and Mines, Mines Library, 2nd floor, MacDonald Block, Toronto.

There has been considerable unrecorded overburden stripping and bedrock trenching (some trenches of considerable size) done by

mineral collectors in recent years. Work done by mineral collectors has included the use of portable drills and explosives.

In addition to the above work, there are several references to the property in published literature which are summarized as follows:

Satterly (1943) describes previous work performed on the property.

Hewitt (1967) summarizes Satterly (1943).

Armstrong and Gittins (1968) reprint Satterly's description.

Hewitt (1969) gives directions to the showing and shows its location on a small, simplified regional geology map.

Bancroft Chamber of Commerce (1982) gives directions and lists minerals.

Sabina (1986) gives directions to the site describes the workings and associated minerals.

Trueman (1993) summarizes the Bancroft Chamber of Commerce (1982) and Sabina (1986).

GEOLOGY AND OBSERVATIONS

2.1 REGIONAL GEOLOGY

The mining claim is located in the Bancroft Terrane of the Central Metasedimentary Belt of the Grenville Structural Province. Most of the Bancroft Terrane has been subjected to middle to upper amphibolite facies metamorphism (Easton, 1992).

2.2 LOCAL GEOLOGY

Rock exposure on the property is poor, with few outcrops which are of small size. In addition, rock exposure at the showings is poor as the showings are overgrown and any exposed rock is generally heavily stained or moss-, lichen-, or soil-covered.

Country rocks exposed at surface on the property consist of quartzite, marble, syenite (possibly a feldspar rich metasedimentary rock or a fenitized rock rather than a true igneous syenite), amphibolite and feldspathic gneiss.

Several coarsely crystalline calcite veins containing large anhedral to euhedral crystals of biotite, hornblende, microcline, apatite and minor quartz occur on the property. In addition to these minerals, Sabina (1986) reports thorite, thorianite, uranophane, serpentine, pyroxene and chondrodite for the property. These minerals weren't found during the present survey and Sabina does

not describe their occurrence so it is unknown if these minerals occur in the calcite veins. The calcite veins strike northwest and dip steeply, crosscutting the foliation of the country rocks. Most of the veins are narrow in width but some are several feet in width.

A very overgrown adit was discovered during prospecting and mapping. The adit is located at the bottom of a hill. The adit is located at the end of a trench. At the south end of the trench, the trench is approximately 2 feet deep. At the north end of the trench at the adit portal, the trench is 25 to 30 feet deep. The adit portal is approximately 10 feet in diameter. The trench and adit portal expose marble consisting of whitish carbonate, abundant anhedral to subhedral medium grained phlogopite and common subhedral tremolite-actinolite grains up to 2-3 cm. The adit is reported to intersect calcite veins. The adit was not entered. However, it appears to be in good condition.

At the trench (Boundary Trench) near the western boundary of the claim there is very coarse grained (10s of cm) anhedral massive black amphibole. In addition there is euhedral coarse amphibole in calcite. Angular pieces of red, massive anhedral apatite were observed in the vicinity of the trench but no apatite was observed *in situ*. There are abundant rock fragments, soil and even trees in the trench obscuring the mineralization. The trench needs to be cleaned and the overburden stripped in the area of the trench to better expose the mineralization.

There is another large trench approximately 100m east of the Boundary Trench. The bottom of this trench is filled with mud. However, the walls of the trench expose abundant massive anhedral very coarse grained black amphibole. There is rare euhedral amphibole and microcline. Some of the wallrock of the trench appears to be syenite but it may be fenite. The trench needs to be cleaned out as it is full of rocks, soil, trees, moss and leaves and the overburden needs to be stripped in the vicinity of the trench

Between the two trenches described above there is a small vein of calcite (>2 feet wide) (Lustrous Trench) cutting quartzite and feldspathic gneiss. This vein is obscured by abundant rock fragment debris. Many of the rock fragments are coated on one side with lustrous small black amphibole crystals and rare milky quartz crystals. The soil and rock debris needs to be removed to expose the calcite vein and overburden stripping done to expose the strike length of the calcite vein.

2.3 HAND SAMPLE DESCRIPTIONS

The following are hand sample descriptions of samples taken during geological mapping of typical or unusual rocks found on the mining claim.

M001 Quartzite

- fine to medium grained
- white to grey (almost smoky) quartz
- contains ≈5% fine grained black unidentified mineral which defines a medium foliation
- sample contains an elongated (in direction of foliation) large grains of pink microcline (3.5 X 1 cm)
- on the weathered surface the sample is whitish grey in color

M002a Quartzo-feldspathic gneiss

- fine to coarse grained white to grey quartz
- medium to coarse grained pink microcline
- weak to medium foliation defined by elongated quartz grains
- no minerals present except quartz and microcline

M002b Quartzite

- fine grained white to smoky quartz
- foliation well defined by gneiss bands (two types)
 - i) gneissic bands consisting of fine to medium grained black amphibole with gneissic bands to 0.5 cm;
 - ii) gneissic bands consisting of medium grained pink microcline with gneissic bands up to 1 cm in width
- one gneissic band is a combination of amphibole and microcline
- the hand sample contains a small calcite veinlet that is approximately 1 cm wide. The strike of the veinlet is perpendicular to the foliation of the hand sample. The veinlet cuts a gneissic band that is a combination of amphibole and microcline, cuts a gneissic band of microcline but stops abruptly at the edge of a gneissic band of amphibole and quartz. The veinlet walls contain medium to coarse grained black amphibole with the amphibole crystals projecting into the calcite 'core'.

M003 Amphibole 'Syenite' (possibly fenite)

- medium foliation
- rock composed of two minerals

- medium grained black amphibole
- fine to medium grained pink microcline

M004 Syenite or Pegmatite

- coarse grained pink microcline
- 5-10% coarse grained opaque white quartz
- possibly a very weak foliation defined by quartz

M005 Micaceous Quartzite

- fine to medium grained opaque white quartz
- very well foliated with foliation defined by narrow bands (<1mm) of medium grained biotite
- sample is unorientated by the biotite bands show define folding

M006a Syenite

- fine to medium grained rock consisting of 90% pink microcline, <5% anhedral white quartz, <5% anhedral to subhedral black amphibole(?).
- the black amphibole(?) and elongated quartz grains define a weak to medium foliation.

M006b Marble

- the hand sample has a whitish-green color
- the rock is fine to medium grained
- the rock appears to consist completely of a carbonate mineral (probably calcite)

M006c Marble

- coarse grained white carbonate mineral (probably calcite)
- medium foliation defined by anhedral grains of a reddish colored mineral (garnet?, chondrodite?, other?)

M007 (H001) Marble

- 4 small samples from same O/C generalized below
- 50-70% fine to coarse grained white to buff carbonate (probably calcite)
- 30-50% green medium to coarse grained subhedral to euhedral tremolite-actinolite occurring in poorly defined bands defining a very weak foliation
- surface of one sample covered with coarse anhedral to subhedral phlogopite

M008 Marble

- yellowish-white colored carbonate (dolomite?)
- unidentified orange-brown grains
- ?colorless tremolite - elongated subhedral grains and radiating grains in a nodule

M009 Marble

- unidentified orange-brown fine to medium anhedral grains forming 10-20% of the rock
- 80-90% white to medium coarse grained carbonate (calcite?)

M010 Marble

- 80% buff colored medium to coarse grained carbonate (probably calcite)
- 20% fine to medium, elongated green colored mineral (tremolite-actinolite?), occur in a large band 4-5 cm wide which defines a weak-medium foliation

CONCLUSIONS AND RECOMMENDATIONS

The trenches, pits and adit on the property are overgrown and obscured by staining, moss and rock and soil debris. They need to be cleaned, brush in the vicinity of the showings needs to be cut, overburden stripped, and bedrock trenching done to allow examination of the mineralization.

The unknown minerals in the hand samples should be identified. This could be done by XRD and/or PTS (microscopy and/or electron microprobe). Some of the marble samples may contain sphalerite so they should be assayed for Zn.

The amphibole should be analyzed to determine its nomenclature.

The carbonate minerals in the marbles should be identified.

REFERENCES

- Armstrong, H.S. and J. Gittins (1968) Geology of Glamorgan and Monmouth Townships, Haliburton County. Ontario Department of Mines, Open File Report No. 5021, p. 111-112
- Bancroft Chamber of Commerce (1982) Bancroft's Guide to Rockhounding, p. 12.
- Easton, R. M. (1992) The Grenville Province and the Proterozoic History of Central and Southern Ontario; *in* Geology of Ontario. Ontario Geological Survey, Special Volume 4, part 2, p. 714-904.
- Hewitt, D. F. (1969) Geology and Scenery, Peterborough, Bancroft and Madoc Area; Ontario Department of Mines, Geology Guide Book 3, p. 56, 61.
- (1967) Phosphate in Canada. Ontario Department of Mines, Mineral Resources Circular No. 6, p. 42.
- Lowe, B. (1977) Geological and Radiometric Surveys of Claims E.O. 460880 to 460883 inclusive E.O. 463209 to 463216 inclusive, Monmouth Township, Ontario. Imperial Oil Limited, Toronto, Ontario
- Sabina, A. P. (1986) Rocks and Minerals for the Collector: Bancroft - Parry Sound area and Southern Ontario. Geological Survey of Canada, Miscellaneous Report 39, p. 57-59.
- Satterly, J. (1943) Mineral Occurences in the Haliburton Area. Ontario Department of Mines, Annual Report Volume LII, Part II, p. 20.
- Trueman, B., (1993) A Rockhound's Paradise 1; Bancroft and Region. WWEC, North York, Ontario.

STATEMENT OF COST

Labour

Oliver B. Bolton, Hon. B. Sc., geologist/geophysicist,
2 days @ \$200/day

Scott E. Harper, Hon. B. Sc., M. Sc. Cand., geologist,
2 days @ \$250/day

J. Harper, assistant
1 day @ \$150/day

1250

Accommodation and Food

2 days @ \$40/day/person

200

Travel

vehicle rental and fuel, 2 days @\$60/day

120

ATV rental 2 days @\$250/day (including Trailer)

500

Report Preparation (incl. library search, report writing,
drafting figures/map, photocopying)

1.5 days (X 2 people) @\$100/day

300

Total Cost of exploration work and travel

2370

Oliver B. Bolton

Scott E Harper

Scott E. Harper

STATEMENT OF QUALIFICATIONS

I, Scott E. Harper, geologist, residing at #407-153 St. George Street, Toronto, Ontario, certify as follows concerning this report:

- 1) I am a graduate of the University of Toronto, Department of Geology, having received the degree of Honours Bachelor of Science (4 year program) in 1992.
- 2) I am a 2nd year M. Sc. student at the University of Toronto, Department of Geology, and expect to complete this degree in 1995.
- 3) I have practised my profession in mineral exploration continuously since 1986, as a prospector until 1992, and as a geologist up to the present.

Scott E. Harper

Scott E. Harper, Hon. B. Sc.
August, 1994
Toronto, Ontario

STATEMENT OF QUALIFICATIONS

I, Oliver B. Bolton, geologist/geophysicist, residing at 3 Jean Street, Toronto, Ontario, certify as follows concerning this report:

- 1) I am a graduate of the University of Toronto, Departments of Physics and Geology, having received the degree of Hon. B. Sc. (4 year program) in 1994.
- 2) I am a 1st year M. Sc. student at the University of Leeds, England, Department of Earth Science, and expect to complete this degree in 1995.
- 3) I have practised my profession in mineral exploration continuously since 1991, as a prospector until 1994, and as a geologist/geophysicist up to the present.

Oliver Bolton

Oliver B. Bolton, Hon. B. Sc.
August, 1994
Toronto, Ontario

2. 16038



030

GEOLOGICAL REPORT

on

**Mining Claims SO 115876 and SO 1191434 (five units),
Lots 7 and 8 Concession VI and Lot 7 South Half,
Concession VII, Effingham Township (M87),
Lennox and Addington County,
Southern Ontario Mining Division**

for

**Sharpmin Developments Incorporated
Suite 407, 153 St. George Street, Toronto, Ontario M5R 2L9**

Report Author:

Scott Harper

Scott Harper, Hon. B. Sc., M. Sc. Cand.,
Geologist
Toronto, Ontario
May 1995



31F03SW0001 2.10038 EFFINGHAM

030C

TABLE OF CONTENTS

INTRODUCTION	4
1.1 LOCATION	4
1.2 ACCESS	4
1.3 PROPERTY	6
1.4 PHYSIOGRAPHY, VEGETATION AND WILDLIFE	6
1.5 HISTORY AND PREVIOUS WORK	6
GEOLOGY AND OBSERVATIONS	
2.1 REGIONAL GEOLOGY	8
2.2 LOCAL GEOLOGY	8
2.3 GEMOLOGY	9
CONCLUSIONS AND RECOMMENDATIONS	10
REFERENCES	11
OTHER USEFUL INFORMATION	11
PERSONNEL	12
STATEMENT OF COST	12
STATEMENT OF QUALIFICATIONS	13

LIST OF FIGURES

Property Location Map 5

Claim Location Map 7

INTRODUCTION

During 1993 and 1994 the old workings of the past-producing Orser and General Electric mines were located. Numerous trails and ways exist to access the site. These were investigated. Two of these routes are described in this report. The second route was the shortest and hence the quickest walking route into the site, although it is still a very long walk (over two miles). However much of that route is impassible by ATV. The first route is passible by ATV as well as one other route (not described). Both of these routes have locked gates. The routes need repaired and improved. Several small excavations made into the mine dumps at regularly spaced intervals to determine the character of the dump material. Specimens of peristerite were cut and polished to evaluate their semi-precious gemstone potential.

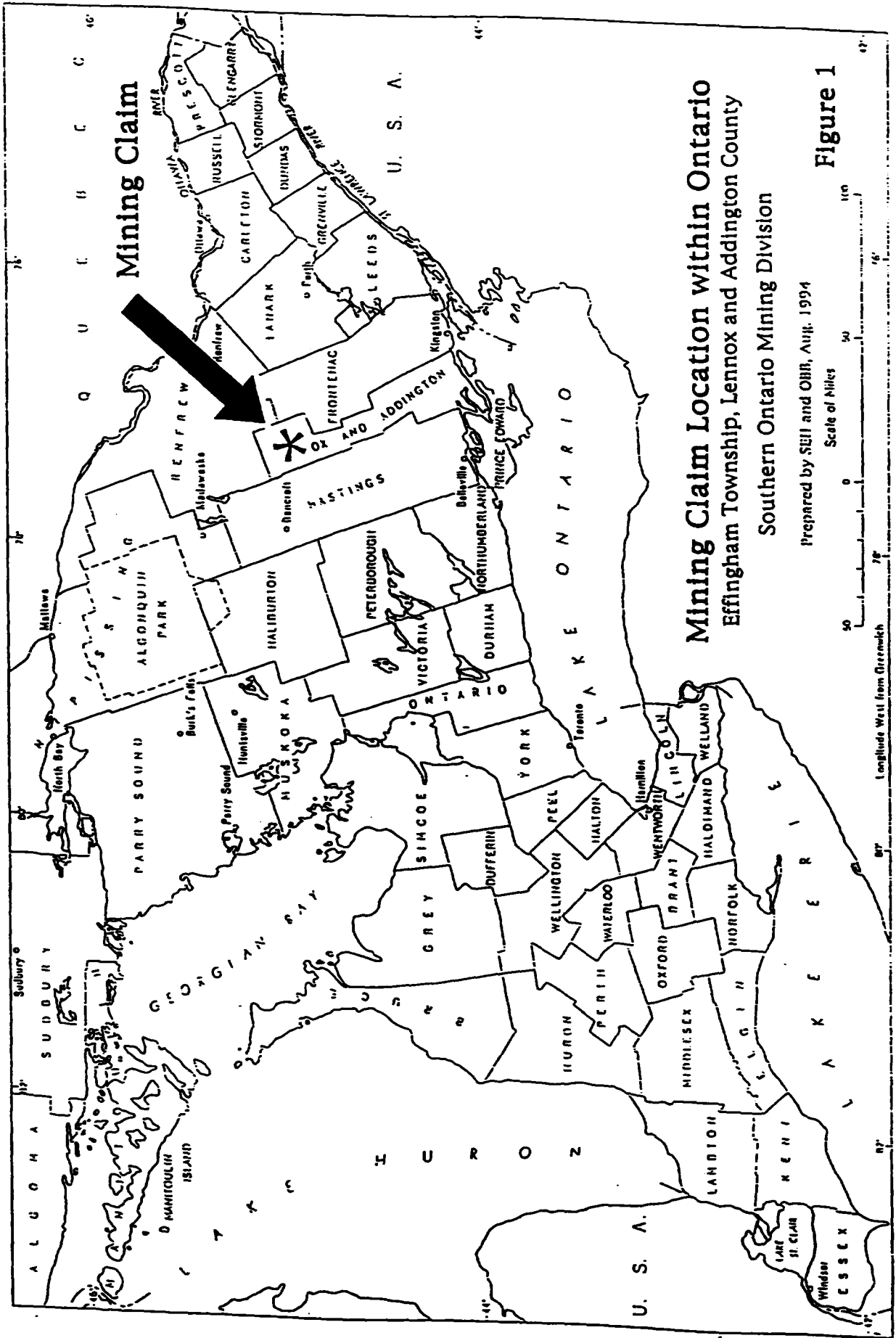
1.1 LOCATION

The property consists of five mining claim units having mining claim numbers SO 1150876 and SO 1191434. The property consists of Lots 7 and 8 Concession VI, and Lot 7 South Half Concession VII, Effingham township (M87), Lennox and Addington County, Southern Ontario Mining District. It is located at Latitude 44° 57' 29" N and Longitude 77° 17' 28" W, UTM Zone 18, 319298mE, 4980620mN, NTS 31C/14NW. The property is located less than a mile north of the northern boundary of Bon Echo Provincial Park and is about two miles west of the north end of Mazinaw Lake. Figure 1 shows the mining claim location within southern Ontario.

1.2 ACCESS

The property can be accessed several ways, two of which are described below:

- 1) From the main entrance of Bon Echo Provincial Park, drive north on Highway 41. Drive 1km past the Addington Road at the north end of Mazinaw Lake. The old mine road is on the left (west) side of the road. There is a gate at the entrance. The road is in poor condition. Walk down the former mine road, past the hunting cabin. Keep left at the fork in the road. This road goes directly to the former mine. It is approximately a 2.5 km walk.
- 2) Drive north on Highway 41 past the old mine road (above) and past Rocky Ridge Cabins (on right). Turn left onto the Ministry of Natural Resources Ranger Camp road. Go past the left turnoff to the Hydro substation. Turn left at the fork in the road (there is a sign 'MNR Junior Camp' to the right). Turn left at the fork in the road. Drive until the lake is on the right and there is a bush road on the left. This road has abundant large glacial rocks in it and goes up a slight hill. It also has a sign 'Mazinaw Power Line Snowmobile Club'. Park and walk up the bush road. Walk approximately 15 minutes along the bush road to the hydro transmission line. Here the bush road turns right and follows the hydro transmission line. Walk along the bush road following the hydro transmission line for approximately 10 minutes. At this point the trail goes south from the hydro transmission line at Hydro post number 268. Walk along the trail for approximately 10 minutes to the former mine (past the hunting cabin).



Mining Claim Location within Ontario
 Effingham Township, Lennox and Addington County
 Southern Ontario Mining Division

Prepared by SEI and OII, Aug. 1994
 Scale of Miles

Figure 1

1.3 PROPERTY

The property consists of two mining claims comprising five mining claim units (each unit is approximately 50 acres):

Table 1:

CLAIM	LOT, CON	SURFACE RIGHTS OWNERSHIP
SO 1150876	7S1/2, VI	O. Foy
"	7N1/2, VI	O. Foy
"	8S1/2, VI	Crown
"	8N1/2, VI	J. Waitson
SO 1191434	7S1/2, VII	Crown

The mining claim is located in Effingham Township (M87), Lennox and Addington County, Southern Ontario Mining Division (Figure 2). The mining claims were staked by S. Harper and O. Bolton, both of Toronto, on May 11, 1993 and recorded on May 13, 1993 for Sharpmin Developments Incorporated, 153 St. George Street, Suite 407 Toronto, Ontario M5R 2L9, Telephone/FAX (416) 961-5041. As outlined in Table 1, some of the surface rights are privately owned by either John Waitson, 41 Sarah Street, Napanee, Ontario, K7R 3J4 or Osmonde Foy, R. R. #1, Cloyne, Ontario, K0H 1K0. The remaining surface rights are crown land. The surface rights owners were notified of intention to perform assessment work by double registered mail on July 16, 1993.

1.4 PHYSIOGRAPHY, VEGETATION AND WILDLIFE

The property consists of land with moderate relief. Low areas are commonly wet and swampy. The property is tree covered, with young hardwoods including maple and minor birch. Spruce and cedar occupy low areas.

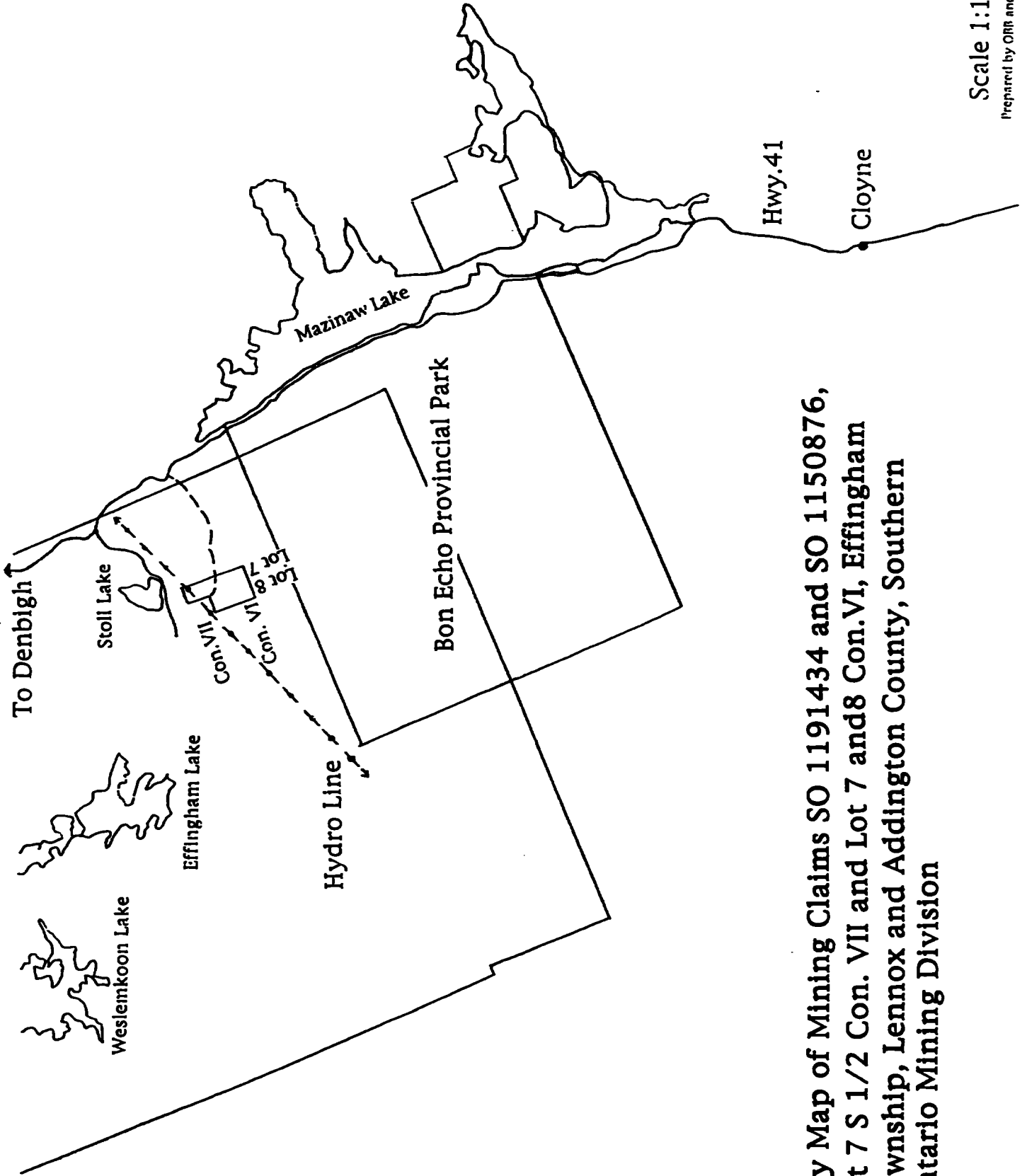
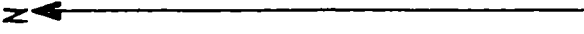
No indigenous wildlife was seen during geological mapping. Deer, moose and bear tracks were seen. Beaver dams were observed at several swamps during claim staking.

The climate is typical of south-central Ontario with warm relatively dry summers and mild accumulations of snow in the winters.

1.5 HISTORY AND PREVIOUS WORK

Two former mines occur on the property. These mines were known as the Orser and General Electric mines. The mines were operated for the production of muscovite mica. Mining took place on a single granitic pegmatite, with the mines located apart from each other but along strike of the same pegmatite (Hewitt, 1967; Hoadley, 1960).

The Orser mine was worked by Sydney Orser from 1938 to 1942, by Marston Minerals Limited in 1943 and 1944, and by C. Orser and son in 1950. At the Orser mine an open pit was excavated that was 100 feet long, 15 feet wide and 15 to 20 feet deep. In 1944, a shaft was sunk by Marston Minerals Limited to a depth of 67 feet. A level was established at 50 feet and 55 feet of drifting was done. Marston Minerals Limited



**Key Map of Mining Claims SO 1191434 and SO 1150876,
Lot 7 S 1/2 Con. VII and Lot 8 Con. VI, Effingham
Township, Lennox and Addington County, Southern
Ontario Mining Division**

Scale 1:126 720
Prepared by ORR and SEI, Aug. 1994

operated from early 1944 until the latter part of May 1944 (Hewitt, 1967; Hoadley, 1960; Tower *et al.*, 1948).

Very little information was found in the literature regarding the General Electric mine. It is uncertain when the mine operated and if it was operated strictly for mica or a combination of mica and feldspar. The two main pits on the former General Electric property are reported to be 80 to 90 feet deep .

The combined length of workings on the former Orser and General Electric mines is at least 1,500 feet (Hewitt, 1967; Hoadley, 1960).

Hewitt (1967) reports that approximately 51 tons of muscovite were produced. Tower *et al.* (1948) report that there were 7,806 pounds of mine-run muscovite mica, 3,346 pounds of trimmed mica, and 18 tons of scrap produced by Marston Minerals Limited in 1944.

It is likely that the granitic pegmatite was explored and possibly mined earlier than 1938 as de Schmid (1916) reports that Loughborough Mining Company Limited owned several lots in Effingham Township including Lot 7 Concession VI.

GEOLOGY AND OBSERVATIONS

2.1 REGIONAL GEOLOGY

The property is located in the Grimsthorpe Domain of the Elzevir Terrane of the Central Metasedimentary Belt of the Grenville Structural Province. It is located at the eastern edge of the Grimsthorpe Domain, just west of the boundary with the Mazinaw Terrane. The Mooroton shear zone, a regional north-south trending shear zone, is located at the eastern margin of the Grimsthorpe Domain marking the margin with the Mazinaw Terrane. Easton (1992) notes that the eastern part of the Grimsthorpe Domain may expose a slightly deeper level of exposure than the western part of the domain. Metamorphism in the domain varies from middle greenschist to upper amphibolite facies (Easton, 1992).

The property is underlain by foliated to gneissic tonalitic to granodioritic rocks of the Weslemkoon tonalite of the Elzevir Suite. Geochemically the Elzevir suite tonalites are alumina rich and it has been suggested that the tonalites were derived from melting of lower crustal material (Easton, 1992).

The Abinger Granite occurs immediately to the east in the Mazinaw Terrane. This granite locally intrudes tonalite intrusion breccias along Highway 41, indicating that this body is younger than the tonalites (Easton, 1992). The granite is more deformed than the intrusion breccia and Easton (1992) suggests that it is perhaps due to syndeformational emplacement.

2.2 LOCAL GEOLOGY

Exposure of the pegmatite and the geology in its vicinity is extremely poor due to flooded workings, overgrowth of vegetation, soil-, debris- and moss-covering the workings, rock dumps and exposures. All surface excavations are water filled. The entrance to the underground workings is caved in and it is believed that they are water-

filled. The rock dumps are covered with several inches of soil and overgrown with trees up to several inches in diameter.

The pegmatite is only exposed on the walls of the water filled pits. The pegmatite dike is approximately 5 metres wide and has been worked over a length of greater than 400 metres.

Several pits were dug by hand in the dumps at approximately 30 metre spacings. This was done to determine the mineralogy of the pegmatite and the character of the dump material. Rock fragments in the dumps range from tiny fragments up to several cubic feet in size.

Minerals found on the dumps include (in order of abundance) quartz, microcline feldspar (including minor pale green amazonite), plagioclase feldspar (including peristerite), muscovite, tourmaline, apatite and fluorite. Goad (1990) reports topaz and spessartine garnets up to 3 cm in diameter. While some garnets were noted in material in the rock dumps, no topaz was found during this investigation. Several specimens were collected that were at first thought to contain topaz. The specimens contained subhedral to anhedral yellowish colored grains up to approximately 1 inch in diameter. However, while examining these grains further, it was determined that they weren't topaz as the grains had a hardness of less than 6 (Moh's scale; topaz is 8). It is believed that these grains are apatite. The identification of these should be verified by XRD or electron microprobe analysis. Small reddish colored garnets were observed by the authors but all were less than 1 cm. Books of muscovite were found ranging up to 4 or 5 inches in diameter. Most of these were very weathered. The feldspars were generally quite stained from the soil and vegetation overlying the rock dumps. However, the peristerite may have some value as a semi-precious gemstone (see Gemology section). The amazonite was whitish green with the largest piece being a few inches in size. The amazonite was quite rare and the pieces found were of poor color. Only masses of amazonite were found, no crystals were observed. The fluorite was also rare and massive. The microcline was massive, with pieces up to several inches in size observed. One small anhedral-subhedral grain was found that may be beryl. The quartz was white to grey, opaque to translucent and often intergrown with feldspar. Rare tourmaline was observed as black anhedral to subhedral crystals up to 1 inch long in microcline.

Hoadley (1960) noted that there is a higher concentration of muscovite within 6 feet of the hanging wall. The muscovite of the deposit was described as large, good quality books, clear and free from mineral staining and up to 12 inches in size. The exposure of the pegmatite was too poor to verify this.

2.3 GEMOLOGY

Sixteen slabs were polished from thirty-six cut slabs to evaluate the peristerite for its semi-precious gemstone potential. The polished slabs averaged sixteen square inches in size (4 X 4" to 4 X 6"). Twenty-five cabochons were cut and polished. Most of the cabochons were cut as 18 X 25 standard ovals.

The slabs and cabochons cut and polished fairly well using standard methods. When the rock was orientated correctly prior to cutting, the finished slab or cabochon displayed a blue opalescent schiller. The base color of the peristerite was white. Problems

encountered during cutting included the material is a feldspar (which has cleavage which is perfect along $c[001]$ and good along $b[010]$, fairly soft being 6 on the Moh's hardness scale, and brittle), there were often inclusions of quartz and/or microcline and/or muscovite, the material sometimes had numerous fractures - possibly due to it having been weathered in the rock dumps or from during the mining process, the material was sometimes stained.

CONCLUSIONS AND RECOMMENDATIONS

The overburden and vegetation covering the dumps, trenches and former workings needs cleared in order to evaluate the quantity and quality of mineralogical material (discussed in greater detail below). The trail(s) are barely adequate for ATV use and they should be improved in order to transport equipment into the site. Topaz has been reported from the site. This needs to be verified. If topaz exists, its content and distribution within the pegmatite and/or dumps needs to be investigated as well as its gem potential. The content, distribution and quality of peristerite and amazonite within the pegmatite and the dumps needs to be investigated further. Goad (1990) produced a good detailed map of the property. This map could be used as a base map for future exploration/development work.

REFERENCES

- de Schmid, H. S. (1916) Feldspar in Canada. Canada Department of Mines, Mines Branch, No. 401, p. 25.
- Easton, R. M. (1992) The Grenville Province and the Proterozoic History of Central and Southern Ontario; *in* Geology of Ontario. Ontario Geological Survey, Special Volume 4, part 2, p. 714-904.
- Goad, B. E. (1990) Granitic Pegmatites of the Bancroft Area, southeastern Ontario. Ontario Geological Survey, Open File Report 5717, 459 p.
- Hewitt, D. F. (1967) Pegmatite Mineral Resources of Ontario. Ontario Department of Mines, Industrial Mineral Report 21, p. 20.
- (1964) Geological Notes for Maps 2053 and 2054, Madoc-Gananoque Area, Ontario. Ontario Department of Mines, Geological Circular 12 (Study 12), p. 29.
- Hoadley, J. W. (1960) Mica Deposits Of Canada. Geological Survey of Canada, Economic Geology Series No. 19, p. 87.
- Tower, W. O., R. L. Smith, W. E. Bawden, D. F. Cooper, J. B. Taylor, E. S. Little, E. B. Weir, D. P. Douglass (1948) Mines of Ontario in 1944. Ontario Department of Mines, Annual Report Volume LIV, Part II, p. 105-106.

OTHER USEFUL INFORMATION:

OBM Maps: 10 18 3150 49800
 10 18 3150 49750
 10 18 3200 49800

GDIF 79 (Effingham Township)

MNR (1981) Orser - Mineral Deposit Inventory Record MDIR SO 1116

PERSONNEL

D. Gratton, P. Eng (Chem), B. Sc. (Geology), #8 - 1000 Dundas St. E., Toronto, Ontario
M4M 1R7 (416) 466-6496

S. Harper, Hon. B. Sc. (Geology), 407-153 St. George Street, Toronto, Ontario
M5R 2L9 (416) 961-5041

R. Koser, prospector, 201 Woodley Drive, Harrisburg, PA USA 17109 (717) 545-1107

D. Redlich, prospector, 48 Kensington Drive, Camp Hill, PA USA 17011 (717) 737-0312

J. Warren, prospector, 511 - 2220 Weston Road, Weston, ON M9M 1Y6 (416) 247-2491

J. Harper, 1195 Nuforest Drive, Ennismore, ON K0L 1T0

STATEMENT OF COST

July 17, 1993 D. Gratton (\$200/day) and S. Harper (\$250/day)	\$450.00
Food and Accomodation	86.50
Transportation (Toronto-property-accom) 274.3 km@\$0.30	82.29
July 18, 1993 D. Gratton and S. Harper	400.00
Food (\$25/person/day)	50.00
Transportation (accom-property-Toronto) 274.3 km@\$0.30	82.29
August 5, 1993 R. Koser (\$150), D. Redlich (\$150) and S. Harper	550.00
Accomodation and Food	120.00
Transportation (Gananoque-Bancroft-property-Bancroft-Gananoque) 531.8 km @\$0.30	159.54
August 21 (?), 1993 S. Harper and J. Harper (\$150)	400.00
Food	50.00
Transportation (Peterborough-property-Peterborough) 388.4 km@\$0.30	116.52
September 16 & 17, 1994	
J. Warren (150/day), S. Harper (250/day)	800.00
Food and Accomodation	136.50
Transportation (Toronto-accom-property-accom-property-Toronto) 594.7km@\$0.30	178.41
Equipment Rental Argo ATV @\$125/day and 6X15'trailer@\$125/day	500.00
Cutting 36 rock slabs (4X4" to 4X6"), polishing 16 faces	672.00
Cutting and Polishing 25 cabochons	431.25
Report Preparation (incl. library search, report writing, drafting figures/map, photocopying) 3 days @\$100/day	300.00
Total	\$5565.30

STATEMENT OF QUALIFICATIONS

I, Scott E. Harper, geologist, residing at #407-153 St. George Street, Toronto, Ontario, certify as follows concerning this report:

- 1) I am a graduate of the University of Toronto, Department of Geology, having received the degree of Honours Bachelor of Science (4 year program) in 1992.
- 2) I am a 2nd year M. Sc. student at the University of Toronto, Department of Geology, and expect to complete this degree in 1995.
- 3) I have practised my profession in mineral exploration continuously since 1986, as a prospector until 1992, and as a geologist up to the present.



Scott Harper, Hon. B. Sc.

Geologist

May, 1995

Toronto, Ontario



Report of Work Conducted After Recording Claim

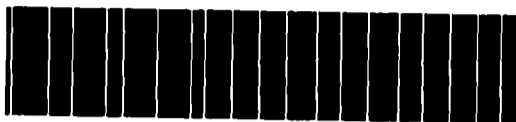
Transaction Number
W9590.00024

Mining Act

Personal information collected on this form is obtained under the authority of the Mining Act. This information will be used for correspondence. Questions about a collection should be directed to the Provincial Manager, Mining Lands, Ministry of Northern Development and Mines, Fourth Floor, 150, Cedar Street, Toronto, Ontario, P3E 8A8, telephone (705) 670-7284.

2.16038

- Instructions:
- Please type or print and submit in duplicate.
 - Refer to the Mining Act and Regulations for re Recorder.
 - A separate copy of this form must be complete.
 - Technical reports and maps must accompany.
 - A sketch, showing the claims the work is assig,



31F03SW0001 2.16038 EFFINGHAM

900

Recorded Holder(s) Shagmin Developments Incorporated	Client No. 294139
Address #407-153 St. George Street Toronto Ontario M5R 2L9	Telephone No. 416-961-5041
Mining Division Southern Ontario	Township/Area Effingham
Date Work Performed From: July 17, 1993	To: May 11, 1995
	M or G Plan No. M87

Work Performed (Check One Work Group Only)

Work Group	Type
<input checked="" type="checkbox"/> Geotechnical Survey	Geological Report
<input type="checkbox"/> Physical Work, Including Drilling	
<input type="checkbox"/> Rehabilitation	
<input type="checkbox"/> Other Authorized Work	
<input type="checkbox"/> Assays	
<input type="checkbox"/> Assignment from Reserve	

RECEIVED
JUN 7 1995
MINING LANDS BRANCH

Total Assessment Work Claimed on the Attached Statement of Costs \$ **5404**

Note: The Minister may reject for assessment work credit all or part of the assessment work submitted if the recorded holder cannot verify expenditures claimed in the statement of costs within 30 days of a request for verification.

Persons and Survey Company Who Performed the Work (Give Name and Address of Author of Report)

Name	Address
S. Harper	#407-153 St. George Street Toronto Ontario M5R 2L9

(attach a schedule if necessary)

Certification of Beneficial Interest - See Note No. 1 on reverse side

I certify that at the time the work was performed, the claims covered in this work report were recorded in the current holder's name or held under a beneficial interest by the current recorded holder.

Date: **May 11, 1995** Recorded Holder or Agent (Signature): **S. Harper**

Certification of Work Report

I certify that I have a personal knowledge of the facts set forth in this Work report, having performed the work or witnessed same during and/or after its completion and annexed report is true.

Name and Address of Person Certifying: **S. Harper - as above**

Telephone No.: **416-961-5041** Date: **May 11, 1995** Certified By (Signature): **S. Harper**

For Office Use Only

Total Value Cr. Recorded \$5404.	Date Recorded May 12/95	Mining Recorder <i>[Signature]</i>	
	Deemed Approval Date Jun 10/95.	Date Approved <i>[Signature]</i>	

Work Report Number for Applying Reserve	Claim Number (see Note 2)	Number of Claim Units
	50115076	4
	501191434	1
Total Number of Claims		2

Value of Assessment Work Done on the Claim	Value Applied to the Claim
5404	5004
0	400
Total Value Work Done	5404
Total Value Work Applied	5404

Value Assigned from this Claim	Reserve: Work to be Claimed at a Future Date
Total Assigned From	Total Reserve

Credits you are claiming in this report may be cut back. In order to minimize the adverse effects of such deletions, please indicate from which claims you wish to prioritize the deletion of credits. Please mark (✓) one of the following:

- Credits are to be cut back starting with the claim listed last, working backwards.
- Credits are to be cut back equally over all claims contained in this report of work.
- Credits are to be cut back as prioritized on the attached appendix.

In the event that you have not specified your choice of priority, option one will be implemented.

Note 1: Examples of beneficial interest are unrecorded transfers, option agreements, memorandum of agreements, etc., with respect to the mining claims.

Note 2: If work has been performed on patented or leased land, please complete the following:

I certify that the recorded holder had a beneficial interest in the patented or leased land at the time the work was performed.	Signature <i>Max S. H. [unclear]</i>	Date Mar 11 195
---	---	--------------------



Ministry of
Northern Development
and Mines

Ministère du
Développement du Nord
et des mines

**Statement of Costs
for Assessment Credit**

**État des coûts aux fins
du crédit d'évaluation**

Mining Act/Loi sur les mines

Transaction No./N° de transaction

W9590.00024

Personal information collected on this form is obtained under the authority of the Mining Act. This information will be used to maintain a record and ongoing status of the mining claim(s). Questions about this collection should be directed to the Provincial Manager, Minings Lands, Ministry of Northern Development and Mines, 4th Floor, 159 Cedar Street, Sudbury, Ontario P3E 6A5, telephone (705) 670-7284.

Les renseignements personnels contenus dans la présente formule sont recueillis en vertu de la Loi sur les mines et serviront à tenir à jour un registre des concessions minières. Adresser toute question sur la collecte de ces renseignements au chef provincial des terrains miniers, ministère du Développement du Nord et des Mines, 159, rue Cedar, 4^e étage, Sudbury (Ontario) P3E 6A5, téléphone (705) 670-7284.

1. Direct Costs/Coûts directs

Type	Description	Amount Montant	Totals Total global
Wages Salaires	Labour Main-d'oeuvre	2600	
	Field Supervision Supervision sur le terrain		2600
Contractor's and Consultant's Fees Droits de l'entrepreneur et de l'expert- conseil	Type Sample Prep.	1103.25	
	Report Writing	300.00	
			1403.25
Supplies Used Fournitures utilisées	Type		
Equipment Rental Location de matériel	Type ATV + Trailer	500	
			500
Total Direct Costs Total des coûts directs			4503.25

2. Indirect Costs/Coûts indirects

** Note: When claiming Rehabilitation work indirect costs are not allowable as assessment work.
Pour le remboursement des travaux de réhabilitation, les coûts indirects ne sont pas admissibles en tant que travaux d'évaluation.

Type	Description	Amount Montant	Totals Total global
Transportation Transport	Type Mileage @ 0.30/km	619.05	
			619.05
Food and Lodging Nourriture et hébergement	Food & Accomodation	443.00	443.00
Mobilization and Demobilization Mobilisation et démobilisation			
Sub Total of Indirect Costs Total partiel des coûts indirects			1062.05
Amount Allowable (not greater than 20% of Direct Costs) Montant admissible (n'excédant pas 20 % des coûts directs)			900.65
Total Value of Assessment Credit (Total of Direct and Allowable indirect costs)			5403.90
Value totale du crédit d'évaluation (Total des coûts directs et indirects admissibles)			

Note: The recorded holder will be required to verify expenditures claimed in this statement of costs within 30 days of a request for verification. If verification is not made, the Minister may reject for assessment work all or part of the assessment work submitted.

Note : Le titulaire enregistré sera tenu de vérifier les dépenses demandées dans le présent état des coûts dans les 30 jours suivant une demande à cet effet. Si la vérification n'est pas effectuée, le ministre peut rejeter tout ou une partie des travaux d'évaluation présentés.

Filing Discounts

1. Work filed within two years of completion is claimed at 100% of the above Total Value of Assessment Credit.
2. Work filed three, four or five years after completion is claimed at 50% of the above Total Value of Assessment Credit. See calculations below:

Total Value of Assessment Credit	Total Assessment Claimed
	x 0.50 =

Remises pour dépôt

1. Les travaux déposés dans les deux ans suivant leur achèvement sont remboursés à 100 % de la valeur totale susmentionnée du crédit d'évaluation.
2. Les travaux déposés trois, quatre ou cinq ans après leur achèvement sont remboursés à 50 % de la valeur totale du crédit d'évaluation susmentionné. Voir les calculs ci-dessous.

Valeur totale du crédit d'évaluation	Evaluation totale demandée
	x 0,50 =

Certification Verifying Statement of Costs

I hereby certify:
that the amounts shown are as accurate as possible and these costs were incurred while conducting assessment work on the lands shown on the accompanying Report of Work form.

that as Agent I am authorized
(Recorded Holder, Agent, Position in Company)

to make this certification

Attestation de l'état des coûts

J'atteste par la présente :
que les montants indiqués sont le plus exact possible et que ces dépenses ont été engagées pour effectuer les travaux d'évaluation sur les terrains indiqués dans la formule de rapport de travail ci-joint.

Et qu'à titre de _____ je suis autorisé
(Titulaire enregistré, représentant, poste occupé dans la compagnie)

à faire cette attestation.

Signature <u>S. Harjot</u>	Date <u>May 11/95</u>
-------------------------------	--------------------------

Ministry of Northern Development and Mines

Report of Work Conducted After Recording Claim

Transaction Number W9590.00025

Mining Act

Information collected on this form is obtained under the authority of the Mining Act. This information will be used for correspondence. Questions about this form should be directed to the Provincial Manager, Mining Lands, Ministry of Northern Development and Mines, Fourth Floor, 150 College Street, Toronto, Ontario, P2E 6A5, telephone (715) 670-7284.

2.16038

- Instructions: - Please type or print and submit in duplicate. - Refer to the Mining Act and Regulations for requirements of filing assessment work or consult the Mining Recorder. - A separate copy of this form must be completed for each Work Group. - Technical reports and maps must accompany this form in duplicate. - A sketch, showing the claims the work is assigned to, must accompany this form.

Holder(s) Sharpen Developments Incorporated, Client No. 29439, Telephone No. 416-961-5041, Division Southern Ontario, Township/Area Monmouth, M or B Plan No. 61298, From: August 1/1994, To: August 31/1994

Performed (Check One Work Group Only)

Table with columns: Work Group, Type. Includes 'Geological Report' and a 'RECEIVED JUN 7 1995 MINING LANDS BRANCH' stamp.

Assessment Work Claimed on the Attached Statement of Costs \$ 2370

The Minister may reject for assessment work credit all or part of the assessment work submitted if the recorded holder cannot verify expenditures claimed in the statement of costs within 90 days of a request for verification.

Name and Survey Company Who Performed the Work (Give Name and Address of Author of Report)

Table with columns: Name, Address. Entry: Sharpen, #407-153 St. George Street Toronto ON M5R 2L9

(Schedule if necessary)

Statement of Beneficial Interest - See Note No. 1 on reverse side

At the time the work was performed, the claims covered in this work were recorded in the current holder's name or held under a beneficial interest with recorded holder. Date: May 11/95, Signature: S. Sharpen

Certification of Work Report

I have a personal knowledge of the facts set forth in this Work report, having performed the work or witnessed same during and/or after the work and annexed report is true.

Signature of Person Certifying: Sharpen - as above, Date: May 11/95, Certified By (Signature): S. Sharpen

Recorded Only

Recorded: 370, Date Recorded: May 12/95, Mining Registrar: [Signature], Date Approved: Aug 10/95, RECEIVED stamp: SOUTHERN ONTARIO MINING DIVISION, MAY 12 1995

Work Report Number for Applying Reserve	Claim Number (see Note 2)	Number of Claim Units
	501150872	2
Total Number of Claims		1

Value of Assessment of Work Done on this Claim	Value Applied to this Claim
2370	2370
Total Value Work Done	
Total Value Work Applied	

Value Assigned from this Claim	Reserve: Work to be Claimed at a Future Date
0	0
Total Assigned From	
Total Reserve	

Credits you are claiming in this report may be cut back. In order to minimize the adverse effects of such deletions, please indicate from which claims you wish to prioritize the deletion of credits. Please mark (✓) one of the following:

- Credits are to be cut back starting with the claim listed last, working backwards.
- Credits are to be cut back equally over all claims contained in this report of work.
- Credits are to be cut back as prioritized on the attached appendix.

In the event that you have not specified your choice of priority, option one will be implemented.

Note 1: Examples of beneficial interest are unrecorded transfers, option agreements, memorandum of agreements, etc., with respect to the mining claims.

Note 2: If work has been performed on patented or leased land, please complete the following:

I certify that the recorded holder had a beneficial interest in the patented or leased land at the time the work was performed.	Signature <i>S. Harper</i>	Date May 11/95
---	-------------------------------	-------------------



Ministry of
Northern Development
and Mines

Ministère du
Développement du Nord
et des mines

**Statement of Costs
for Assessment Credit**

**État des coûts aux fins
du crédit d'évaluation**

Mining Act/Loi sur les mines

Transaction No./N° de transaction

W9590.00025.

Personal information collected on this form is obtained under the authority of the Mining Act. This information will be used to maintain a record and ongoing status of the mining claim(s). Questions about this collection should be directed to the Provincial Manager, Minings Lands, Ministry of Northern Development and Mines, 4th Floor, 159 Cedar Street, Sudbury, Ontario P3E 6A5, telephone (705) 670-7264.

Les renseignements personnels contenus dans la présente formule sont recueillis en vertu de la Loi sur les mines et serviront à tenir à jour un registre des concessions minières. Adresser toute question sur la collecte de ces renseignements au chef provincial des terrains miniers, ministère du Développement du Nord et des Mines, 159, rue Cedar, 4^e étage, Sudbury (Ontario) P3E 6A5, téléphone (705) 670-7264.

1. Direct Costs/Coûts directs

Type	Description	Amount Montant	Totals Total global
Wages Salaires	Labour Main-d'oeuvre	1250	
	Field Supervision Supervision sur le terrain		1250
Contractor's and Consultant's Fees Droits de l'entrepreneur et de l'expert- conseil	Type Report writing	300	
			300
Supplies Used Fournitures utilisées	Type		
Equipment Rental Location de matériel	Type ATV + Trailer	500	
			500
Total Direct Costs Total des coûts directs			2050

2. Indirect Costs/Coûts indirects

** Note: When claiming Rehabilitation work indirect costs are not allowable as assessment work.
Pour le remboursement des travaux de réhabilitation, les coûts indirects ne sont pas admissibles en tant que travaux d'évaluation.

Type	Description	Amount Montant	Totals Total global
Transportation Transport	Type M: leage	120	
			120
Food and Lodging Nourriture et hébergement	Food	200	200
Mobilization and Demobilization Mobilisation et démobilisation			
Sub Total of Indirect Costs Total partiel des coûts indirects			320
Amount Allowable (not greater than 20% of Direct Costs) Montant admissible (n'excédant pas 20 % des coûts directs)			320
Total Value of Assessment Credit (Total of Direct and Allowable indirect costs)			2370
Valeur totale du crédit d'évaluation (Total des coûts directs et indirects admissibles)			2370

Note: The recorded holder will be required to verify expenditures claimed in this statement of costs within 30 days of a request for verification. If verification is not made, the Minister may reject for assessment work all or part of the assessment work submitted.

Note : Le titulaire enregistré sera tenu de vérifier les dépenses demandées dans le présent état des coûts dans les 30 jours suivant une demande à cet effet. Si la vérification n'est pas effectuée, le ministre peut rejeter tout ou une partie des travaux d'évaluation présentés.

Filing Discounts

1. Work filed within two years of completion is claimed at 100% of the above Total Value of Assessment Credit.
2. Work filed three, four or five years after completion is claimed at 50% of the above Total Value of Assessment Credit. See calculations below:

Total Value of Assessment Credit	Total Assessment Claimed
	x 0.50 =

Remises pour dépôt

1. Les travaux déposés dans les deux ans suivant leur achèvement sont remboursés à 100 % de la valeur totale susmentionnée du crédit d'évaluation.
2. Les travaux déposés trois, quatre ou cinq ans après leur achèvement sont remboursés à 50 % de la valeur totale du crédit d'évaluation susmentionné. Voir les calculs ci-dessous.

Valeur totale du crédit d'évaluation	Evaluation totale demandée
	x 0,50 =

Certification Verifying Statement of Costs

I hereby certify:
that the amounts shown are as accurate as possible and these costs were incurred while conducting assessment work on the lands shown on the accompanying Report of Work form.

that as Agent I am authorized
(Recorded Holder, Agent, Position in Company)

to make this certification

Attestation de l'état des coûts

J'atteste par la présente :
que les montants indiqués sont le plus exact possible et que ces dépenses ont été engagées pour effectuer les travaux d'évaluation sur les terrains indiqués dans la formule de rapport de travail ci-joint.

Et qu'à titre de _____ je suis autorisé
(titulaire enregistré, représentant, poste occupé dans la compagnie)

à faire cette attestation.

Signature <u>S. Harper</u>	Date <u>May 11/95</u>
-------------------------------	--------------------------



Report of Work Conducted After Recording Claim

RES. GEO. TWEED
Transaction Number
W9590.00027

Ontario

Mining Act

Personal information collected on this form is obtained under the authority of the Mining Act. This information will be used for correspondence. Questions about this collection should be directed to the Provincial Manager, Mining Lands, Ministry of Northern Development and Mines, Fourth Floor, 159 Cedar Street, Sudbury, Ontario, P3E 8A5, telephone (705) 670-7264.

2.16038

- Instructions:**
- Please type or print and submit in duplicate.
 - Refer to the Mining Act and Regulations for requirements of filing assessment work or consult the Mining Recorder.
 - A separate copy of this form must be completed for each Work Group.
 - Technical reports and maps must accompany this form in duplicate.
 - A sketch, showing the claims the work is assigned to, must accompany this form.

Recorded Holder(s) <i>Sharpmin Developments Incorporated #407-153 St. George Street Toronto ON M5R 2L9</i>	Client No. <i>294139</i>
Address <i>#407-153 St. George Street Toronto ON M5R 2L9</i>	Telephone No. <i>(416) 961-5041</i>
Mining Division <i>Southern Ontario</i>	Township/Area <i>Sebastopol</i>
M or G Plan No. <i>M148</i>	
Dates Work Performed From: <i>May 6, 1995</i> To: <i>May 11, 1995</i>	

Work Performed (Check One Work Group Only)

Work Group	Type
Geotechnical Survey	
Physical Work, Including Drilling	
Rehabilitation	
<input checked="" type="checkbox"/> Other Authorized Work	<i>Mineralogical (Section 18)</i>
Assays	
Assignment from Reserve	

RECEIVED
 JUN 7 1995
 MINING LANDS BRANCH

Total Assessment Work Claimed on the Attached Statement of Costs \$ *1250 113.*

Note: The Minister may reject for assessment work credit all or part of the assessment work submitted if the recorded holder cannot verify expenditures claimed in the statement of costs within 30 days of a request for verification.

Persons and Survey Company Who Performed the Work (Give Name and Address of Author of Report)

Name	Address
<i>S. Harper</i>	<i>#407-153 St. George Street Toronto Ontario M5R 2L9</i>

(attach a schedule if necessary)

Certification of Beneficial Interest * See Note No. 1 on reverse side

I certify that at the time the work was performed, the claims covered in this work report were recorded in the current holder's name or held under a beneficial interest by the current recorded holder.	Date <i>May 11/95</i>	Recorded Holder or Agent (Signature) <i>S. Harper</i>
--	--------------------------	--

Certification of Work Report

I certify that I have a personal knowledge of the facts set forth in this Work report, having performed the work or witnessed same during and/or after its completion and annexed report is true.		
Name and Address of Person Certifying <i>S. Harper - as above</i>		
Telephone No. <i>416-961-5041</i>	Date <i>May 11/95</i>	Certified By (Signature) <i>S. Harper</i>

For Office Use Only

Total Value Cr. Recorded <i>\$ 113</i>	Date Recorded <i>May 12/95</i>	Mining Recorder <i>[Signature]</i>	SOUTHERN ONTARIO MINING DIVISION RECEIVED MAY 12 1995 AM PM 7,8,9,10,11,12,1,2,3,4,5,6
Deemed Approval Date <i>August 10/95</i>	Date Approved		
Date Notice for Amendments Sent			



Ministry of
Northern Development
and Mines

Ministère du
Développement du Nord
et des mines

Statement of Costs
for Assessment Credit

État des coûts aux fins
du crédit d'évaluation

Mining Act/Loi sur les mines

Transaction No./N° de transaction

W9590.00027

Personal information collected on this form is obtained under the authority of the Mining Act. This information will be used to maintain a record and ongoing status of the mining claim(s). Questions about this collection should be directed to the Provincial Manager, Minings Lands, Ministry of Northern Development and Mines, 4th Floor, 159 Cedar Street, Sudbury, Ontario P3E 6A5, telephone (705) 670-7284.

Les renseignements personnels contenus dans la présente formule sont recueillis en vertu de la Loi sur les mines et serviront à tenir à jour un registre des concessions minières. Adresser toute question sur la collecte de ces renseignements au chef provincial des terrains miniers, ministère du Développement du Nord et des Mines, 159, rue Cedar, 4^e étage, Sudbury (Ontario) P3E 6A5, téléphone (705) 670-7284.

1. Direct Costs/Coûts directs

Type	Description	Amount Montant	Totals Total global
Wages Salaires	Labour Main-d'oeuvre	52.50	
	Field Supervision Supervision sur le terrain		52.50
Contractor's and Consultant's Fees Droits de l'entrepreneur et de l'expert- conseil	Type Mineralogy	60.00	
			60.00
Supplies Used Fournitures utilisées	Type		
Equipment Rental Location de matériel	Type		
Total Direct Costs Total des coûts directs			112.50

2. Indirect Costs/Coûts indirects

** Note: When claiming Rehabilitation work Indirect costs are not allowable as assessment work.
Pour le remboursement des travaux de réhabilitation, les coûts indirects ne sont pas admissibles en tant que travaux d'évaluation.

Type	Description	Amount Montant	Totals Total global
Transportation Transport	Type		
Food and Lodging Nourriture et hébergement			
Mobilization and Demobilization Mobilisation et démobilisation			
Sub Total of Indirect Costs Total partiel des coûts indirects			0
Amount Allowable (not greater than 20% of Direct Costs) Montant admissible (n'excédant pas 20 % des coûts directs)			0
Total Value of Assessment Credit (Total of Direct and Allowable Indirect costs)			112.50
Valeur totale du crédit d'évaluation (Total des coûts directs et indirects admissibles)			112.50

Note: The recorded holder will be required to verify expenditures claimed in this statement of costs within 30 days of a request for verification. If verification is not made, the Minister may reject for assessment work all or part of the assessment work submitted.

Note : Le titulaire enregistré sera tenu de vérifier les dépenses demandées dans le présent état des coûts dans les 30 jours suivant une demande à cet effet. Si la vérification n'est pas effectuée, le ministre peut rejeter tout ou une partie des travaux d'évaluation présentés.

Filing Discounts

1. Work filed within two years of completion is claimed at 100% of the above Total Value of Assessment Credit.
2. Work filed three, four or five years after completion is claimed at 50% of the above Total Value of Assessment Credit. See calculations below:

Total Value of Assessment Credit	Total Assessment Claimed
	x 0.50 =

Remises pour dépôt

1. Les travaux déposés dans les deux ans suivant leur achèvement sont remboursés à 100 % de la valeur totale susmentionnée du crédit d'évaluation.
2. Les travaux déposés trois, quatre ou cinq ans après leur achèvement sont remboursés à 50 % de la valeur totale du crédit d'évaluation susmentionné. Voir les calculs ci-dessous.

Valeur totale du crédit d'évaluation	Evaluation totale demandée
	x 0,50 =

Certification Verifying Statement of Costs

hereby certify:
that the amounts shown are as accurate as possible and these costs were incurred while conducting assessment work on the lands shown on the accompanying Report of Work form.

that as Director/Agent I am authorized
(Recorded Holder, Agent, Position in Company)

to make this certification

Attestation de l'état des coûts

J'atteste par la présente :
que les montants indiqués sont le plus exact possible et que ces dépenses ont été engagées pour effectuer les travaux d'évaluation sur les terrains indiqués dans la formule de rapport de travail ci-joint.

Et qu'à titre de _____ je suis autorisé
(titulaire enregistré, représentant, poste occupé dans la compagnie)

à faire cette attestation.

Signature Scott Hayer Date May 11/95



Report of Work Conducted After Recording Claim

Res. No. Tweed
Transaction Number
W9590.00028

Ontario

Mining Act

Personal information collected on this form is obtained under the authority of the Mining Act. This information will be used for correspondence. Questions about this collection should be directed to the Provincial Manager, Mining Lands, Ministry of Northern Development and Mines, Fourth Floor, 159 Cedar Street, Sudbury, Ontario, P3E 6A5, telephone (705) 670-7264.

2.16038

- Instructions:**
- Please type or print and submit in duplicate.
 - Refer to the Mining Act and Regulations for requirements of filing assessment work or consult the Mining Recorder.
 - A separate copy of this form must be completed for each Work Group.
 - Technical reports and maps must accompany this form in duplicate.
 - A sketch, showing the claims the work is assigned to, must accompany this form.

Recorded Holder(s) <i>Sharpmin Developments Incorporated</i>		Client No. <i>294139</i>
Address <i>#407-153 St. George Street Toronto ON M5R 2L9</i>		Telephone No. <i>416-961-5041</i>
Mining Division <i>Southern Ontario</i>	Township/Area <i>Monmouth</i>	M or G Plan No.
Dates Work Performed From: <i>May 24, 1994</i>		To: <i>May 12, 1995</i>

Work Performed (Check One Work Group Only)

Work Group	Type
Geotechnical Survey	
Physical Work, Including Drilling	
Rehabilitation	
<input checked="" type="checkbox"/> Other Authorized Work	<i>Prospecting</i>
Assays	
Assignment from Reserve	

RECEIVED
JUN 7 1995
MINING LANDS BRANCH

Total Assessment Work Claimed on the Attached Statement of Costs \$ *186,107.4*

Note: The Minister may reject for assessment work credit all or part of the assessment work submitted if the recorded holder cannot verify expenditures claimed in the statement of costs within 30 days of a request for verification.

Persons and Survey Company Who Performed the Work (Give Name and Address of Author of Report)

Name	Address
<i>S. Harper</i>	<i>#407-153 St. George Street Toronto ON M5R 2L9</i>

(attach a schedule if necessary)

Certification of Beneficial Interest * See Note No. 1 on reverse side

I certify that at the time the work was performed, the claims covered in this work report were recorded in the current holder's name or held under a beneficial interest by the current recorded holder.	Date <i>May 11/95</i>	Recorded Holder or Agent (Signature) <i>S. Harper</i>
--	--------------------------	--

Certification of Work Report

I certify that I have a personal knowledge of the facts set forth in this Work report, having performed the work or witnessed same during and/or after its completion and annexed report is true.

Name and Address of Person Certifying
S. Harper as above

Telephone No. <i>416-961-5041</i>	Date <i>May 11/95</i>	Certified By (Signature) <i>S. Harper</i>
--------------------------------------	--------------------------	--

For Office Use Only

Total Value Cr. Recorded <i>\$1,074</i>	Date Recorded <i>May 12/95</i>	Mining Recorder <i>[Signature]</i>	Recorded SOUTHERN ONTARIO MINING DIVISION
	Deemed Approval Date <i>August 10/95</i>	Date Approved	RECEIVED
	Date Notice for Amendments Sent		MAY 12 1995
			AM 7,8,9,10,11,12,1,2,3,4,5,6 PM



Statement of Costs
for Assessment Credit

État des coûts aux fins
du crédit d'évaluation

Mining Act/Loi sur les mines

Transaction No./N° de transaction

W9590.00028

Personal information collected on this form is obtained under the authority of the Mining Act. This information will be used to maintain a record and ongoing status of the mining claim(s). Questions about this collection should be directed to the Provincial Manager, Minings Lands, Ministry of Northern Development and Mines, 4th Floor, 159 Cedar Street, Sudbury, Ontario P3E 6A5, telephone (705) 670-7264.

Les renseignements personnels contenus dans la présente formule sont recueillis en vertu de la Loi sur les mines et serviront à tenir à jour un registre des concessions minières. Adresser toute question sur la collecte de ces renseignements au chef provincial des terrains miniers, ministère du Développement du Nord et des Mines, 159, rue Cedar, 4^e étage, Sudbury (Ontario) P3E 6A5, téléphone (705) 670-7264.

1. Direct Costs/Coûts directs

Type	Description	Amount Montant	Totals Total global
Wages Salaires	Labour Main-d'oeuvre	600	
	Field Supervision Supervision sur le terrain		600
Contractor's and Consultant's Fees Droits de l'entrepreneur et de l'expert- conseil	Type		
Supplies Used Fournitures utilisées	Type		
Equipment Rental Location de matériel	Type ATV + Traicre	250	
	Diamond Sun	45	
Total Direct Costs Total des coûts directs			895

2. Indirect Costs/Coûts indirects

** Note: When claiming Rehabilitation work indirect costs are not allowable as assessment work.
Pour le remboursement des travaux de réhabilitation, les coûts indirects ne sont pas admissibles en tant que travaux d'évaluation.

Type	Description	Amount Montant	Totals Total global
Transportation Transport	Type Mileage	407.88	
			407.88
Food and Lodging Nourriture et hébergement	Food	45	45
Mobilization and Demobilization Mobilisation et démobilisation			
Sub Total of Indirect Costs Total partiel des coûts indirects			452.88
Amount Allowable (not greater than 20% of Direct Costs) Montant admissible (n'excédant pas 20 % des coûts directs)			171.00 405.88
Total Value of Assessment Credit (Total of Direct and Allowable indirect costs)			986
Valeur totale du crédit d'évaluation (Total des coûts directs et indirects admissibles)			1074.88

Note: The recorded holder will be required to verify expenditures claimed in this statement of costs within 30 days of a request for verification. If verification is not made, the Minister may reject for assessment work all or part of the assessment work submitted.

Note: Le titulaire enregistré sera tenu de vérifier les dépenses demandées dans le présent état des coûts dans les 30 jours suivant une demande à cet effet. Si la vérification n'est pas effectuée, le ministre peut rejeter tout ou une partie des travaux d'évaluation présentés.

Filing Discounts

1. Work filed within two years of completion is claimed at 100% of the above Total Value of Assessment Credit.
2. Work filed three, four or five years after completion is claimed at 50% of the above Total Value of Assessment Credit. See calculations below:

Total Value of Assessment Credit	Total Assessment Claimed
	x 0.50 =

Remises pour dépôt

1. Les travaux déposés dans les deux ans suivant leur achèvement sont remboursés à 100 % de la valeur totale susmentionnée du crédit d'évaluation.
2. Les travaux déposés trois, quatre ou cinq ans après leur achèvement sont remboursés à 50 % de la valeur totale du crédit d'évaluation susmentionné. Voir les calculs ci-dessous.

Valeur totale du crédit d'évaluation	Evaluation totale demandée
	x 0,50 =

Certification Verifying Statement of Costs

I hereby certify:
that the amounts shown are as accurate as possible and these costs were incurred while conducting assessment work on the lands shown on the accompanying Report of Work form.

that as Agent I am authorized
(Recorded Holder, Agent, Position in Company)
to make this certification

Attestation de l'état des coûts

J'atteste par la présente :
que les montants indiqués sont le plus exact possible et que ces dépenses ont été engagées pour effectuer les travaux d'évaluation sur les terrains indiqués dans la formule de rapport de travail ci-joint.

Et qu'à titre de _____ je suis autorisé
(titulaire enregistré, représentant, poste occupé dans la compagnie)
à faire cette attestation.

Signature S. Hayer Date May 11/95

Ministry of
Northern Development
and Mines

Ministère du
Développement du Nord
et des Mines

Geoscience Approvals Office
933 Ramsey Lake Road
6th Floor
Sudbury, Ontario
P3E 6B5

Telephone: (705) 670-5853
Fax: (705) 670-5863

August 31, 1995

Our File: 2.16038
Transaction #W9590.00024
W9590.00025
W9590.00027
W9590.00028

Mining Recorder
Ministry of Northern
Development and Mines
MacDonald Block, Room M2-17
900 Bay Street
Toronto, Ontario
M7A 1C3

Dear Mr. Denomme:

**Subject: GEOLOGICAL REPORT OVER CLAIM SO1150876 IN EFFINGHAM TOWNSHIP
AND CLAIM SO1150872 IN MONMOUTH TOWNSHIP, MINERALOGICAL
REPORT ON CLAIM SO1150877 IN SEBASTOPOL TOWNSHIP AND
PROSPECTING REPORT OVER CLAIM SO1150872 IN MONMOUTH TOWNSHIP**

The deficiencies associated with work report W9590.00024 and W9590.00025 have been corrected. Accordingly, assessment credits have been approved as outlined on the report of work forms. The credits have been approved under Section 12 (Geology) of the Mining Act Regulations. The approval date is August 22, 1995.

However, the deficiencies associated with work report W9590.00027 and W9590.00028 have not been entirely corrected.

Work Report W9590.00027

As a result of a lack of sample location, this work report will not be subject to assessment credit. Therefore, assessment credit for this work report will be reduced from \$113.00 to \$0.00. The approval date is August 22, 1995.

August 31, 1995

Work Report W9590.00028

This submission will only be allowed 1 day prospecting.

<u>Direct Expenses</u>		<u>Indirect Expenses</u>	
Prospecting (1 day)	\$150.00	Mileage	
ATV & Trailer (1 day)	\$175.00	(453.2km x \$0.30)	\$136.00
Diamond Saw	\$ 45.00	Food	\$ 15.00
	-----		-----
Total	\$370.00	Total	\$151.00
		Amount Allowable	\$ 74.00
		(20% of Direct Costs)	
		Total Value of	
		Assessment Credit	\$444.00

Accordingly, an assessment credit of \$444.00 has been approved on August 22, 1995 for Work Report W9590.00028. The credits have been approved under Section 9 (Prospecting) of the Mining Act Regulations. The credit has been distributed as outlined on the attached report of work form.

If you have any questions regarding this correspondence please contact Steven Beneteau at (705) 670-5855.

ORIGINAL SIGNED BY:
Yours sincerely,

Ron C. Gashinski
Senior Manager, Mining Lands Section
Mining and Land Management Branch
Mines and Minerals Division

SBB
SBB/dl
Encl.

cc: Resident Geologist
Tweed, Ontario

✓ Assessment Files Library
Sudbury, Ontario

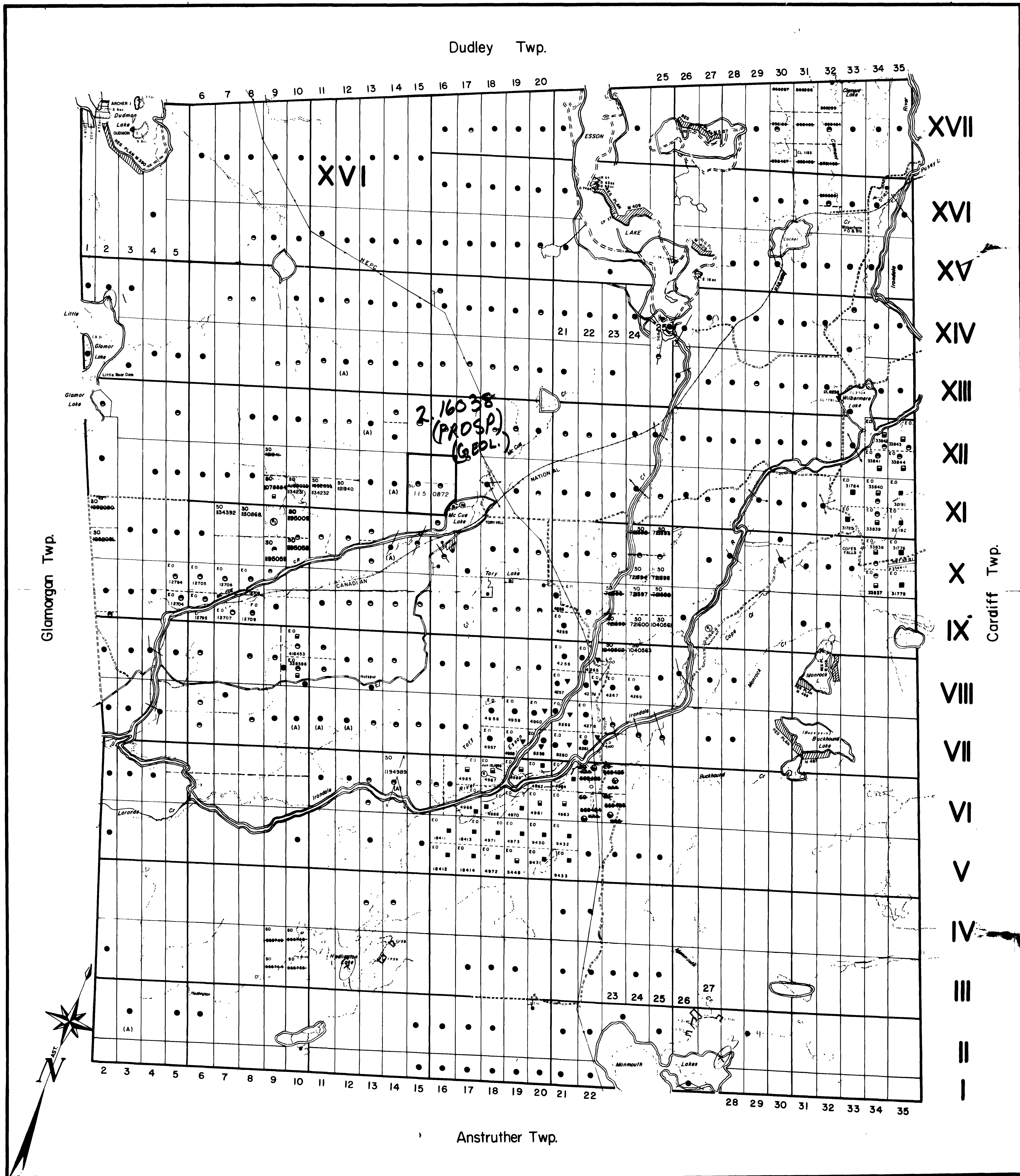
VALUE OF ASSESSMENT WORK PERFORMED ON MINING CLAIMS

August 31, 1995
File 2.16038
Transaction # W9590.00027

CLAIM NUMBER	VALUE OF ASSESSMENT WORK DONE ON THE CLAIM
SO 1150877	\$0.00 -----
TOTAL	\$0.00

File 2.16038
Transaction # W9590.00028

CLAIM NUMBER	VALUE OF ASSESSMENT WORK DONE ON THE CLAIM
SO 1150872	\$444.00 -----
Total	\$444.00



LEGEND

HIGHWAY AND ROUTE No.

OTHER ROADS

TRAILS

SURVEYED LINES

TOWNSHIP, BASE LINES, ETC.

LOTS, MINING CLAIMS, PARCELS, ETC.

UNSURVEYED LINES

LOT LINES

PARCEL BOUNDARY

MINING CLAIMS ETC.

RAILWAY AND RIGHT OF WAY

UTILITY LINES

NON PERENNIAL STREAM

FLOODING OR FLOODING RIGHTS

SUBDIVISION OR COMPOSITE PLAN

RESERVATIONS

ORIGINAL SHORELINE

MARSH OR MUSKEG

MINES

TRAVERSE MONUMENT

DISPOSITION OF CROWN LANDS

TYPE OF DOCUMENT	SYMBOL
PATENT, SURFACE & MINING RIGHTS	●
SURFACE RIGHTS ONLY	○
MINING RIGHTS ONLY	◐
LEASE, SURFACE & MINING RIGHTS	◑
SURFACE RIGHTS ONLY	◒
MINING RIGHTS ONLY	◓
LICENCE OF OCCUPATION	○
ORDER-IN-COUNCIL	OC
RESERVATION	○
CANCELLED	○
SAND & GRAVEL	○
LAND ACQUISITION	(A)

SCALE 1 INCH = 40 CHAINS

0 1000 2000 4000 6000 8000
0 200 1000 2000
MILES KM

NOTES

This Map Is Not To Be Used
FOR SURVEY PURPOSES

Original shoreline shown thus:

F.R.I. shoreline shown thus:

Patents Map shoreline shown thus:

For status of summer resort locations shown thus:

Please contact Ministry of Natural Resources.

GRAVEL AND SAND

① JUNE 12, 1986 File 30003

AREAS WITHDRAWN FROM DISPOSITION

M.R.O. - MINING RIGHTS ONLY
S.R.O. - SURFACE RIGHTS ONLY
M+S - MINING AND SURFACE RIGHTS

Description	Order No.	Date	Disposition	File
① SEC.36/90	W.4/84	21/1/84	M.R.O.	

THE INFORMATION THAT APPEARS ON THIS MAP HAS BEEN COMPILED FROM VARIOUS SOURCES, AND ACCURACY IS NOT GUARANTEED. THOSE WISHING TO STAKE MINING CLAIMS SHOULD CONSULT WITH THE MINING RECORDER, MINISTRY OF NORTHERN DEVELOPMENT AND MINES, FOR ADDITIONAL INFORMATION ON THE STATUS OF THE LANDS SHOWN HEREON.

② SEC.35/90 W.50-B/84 27/05/84 M.R.O. 19510

TOWNSHIP
MONMOUTH

M.N.R. ADMINISTRATIVE DISTRICT
MINDEN
MINING DIVISION
SOUTHERN ONTARIO
LAND TITLES / REGISTRY DIVISION
HALIBURTON

DATE OF ISSUE
MAY 1 1995
SOUTHERN ONTARIO MINING DIVISION

Ministry of Natural Resources and Mines
Ministry of Northern Development and Mines

Date FEBRUARY, 1987 Number **G-1298**

2.16038

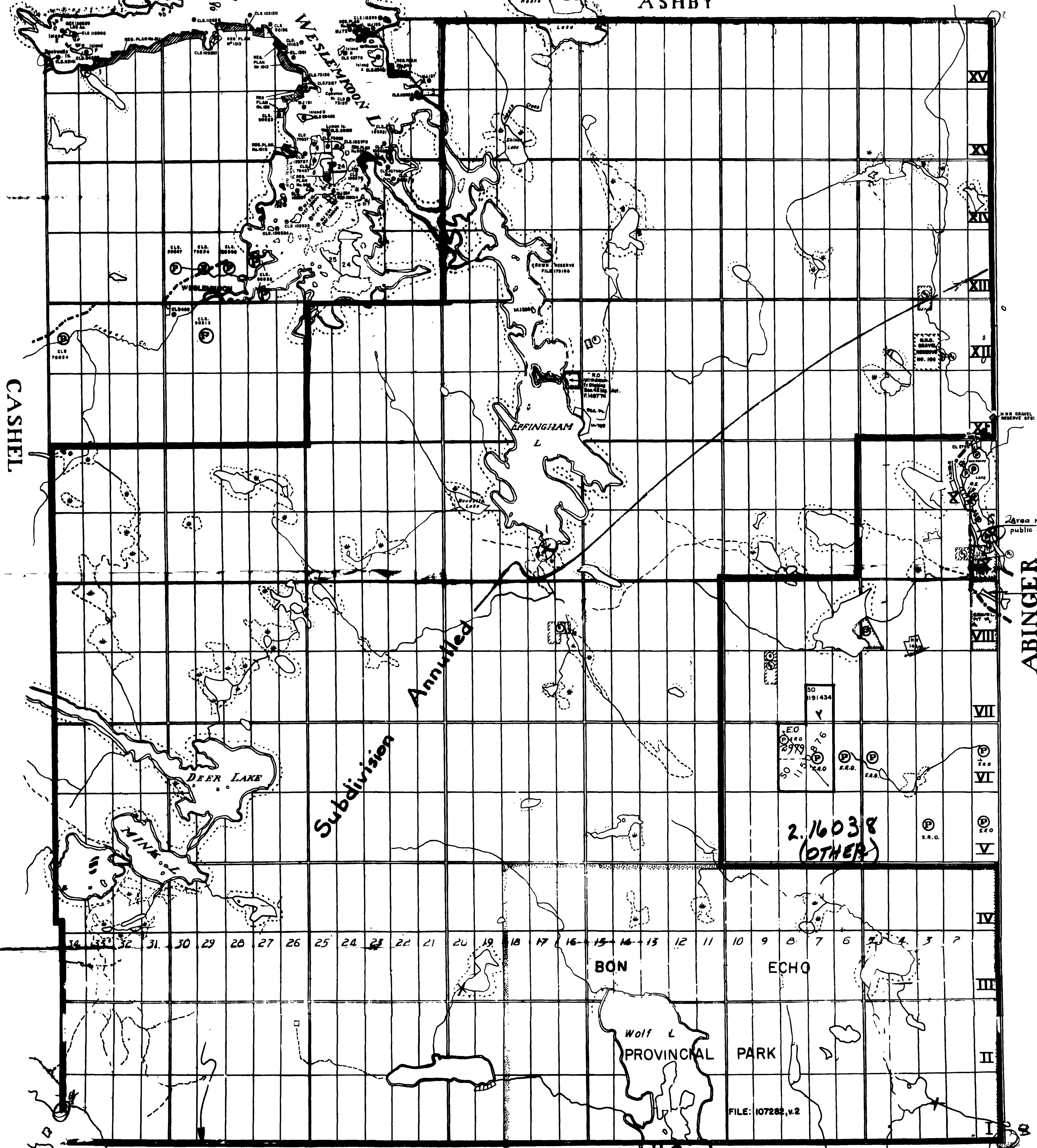


EFFINGHAM M. 87

SOUTHERN ONTARIO

SCALE: 1 INCH = 40 CHAINS (1/2 MILE)

ASHBY



CASHIEL

ABINGER

ANGLESEA TWP.

PLAN M.87

ONTARIO

MINISTRY OF NATURAL RESOURCES

SURVEYS AND MAPPING BRANCH

Note:
400' Surface rights reservation around all lakes and rivers.

SAND and GRAVEL

- ① M.N.R. 671 GRAVEL RESERVE
- ② M.N.R. 672 GRAVEL RESERVE
- ③ M.N.R. 673 GRAVEL RESERVE
- ④ M.N.R. 674 GRAVEL RESERVE
- ⑤ M.N.R. 675 GRAVEL RESERVE

RESERVES

- ⑥ BUFFER ZONE AROUND WASTE DISPOSAL SITE

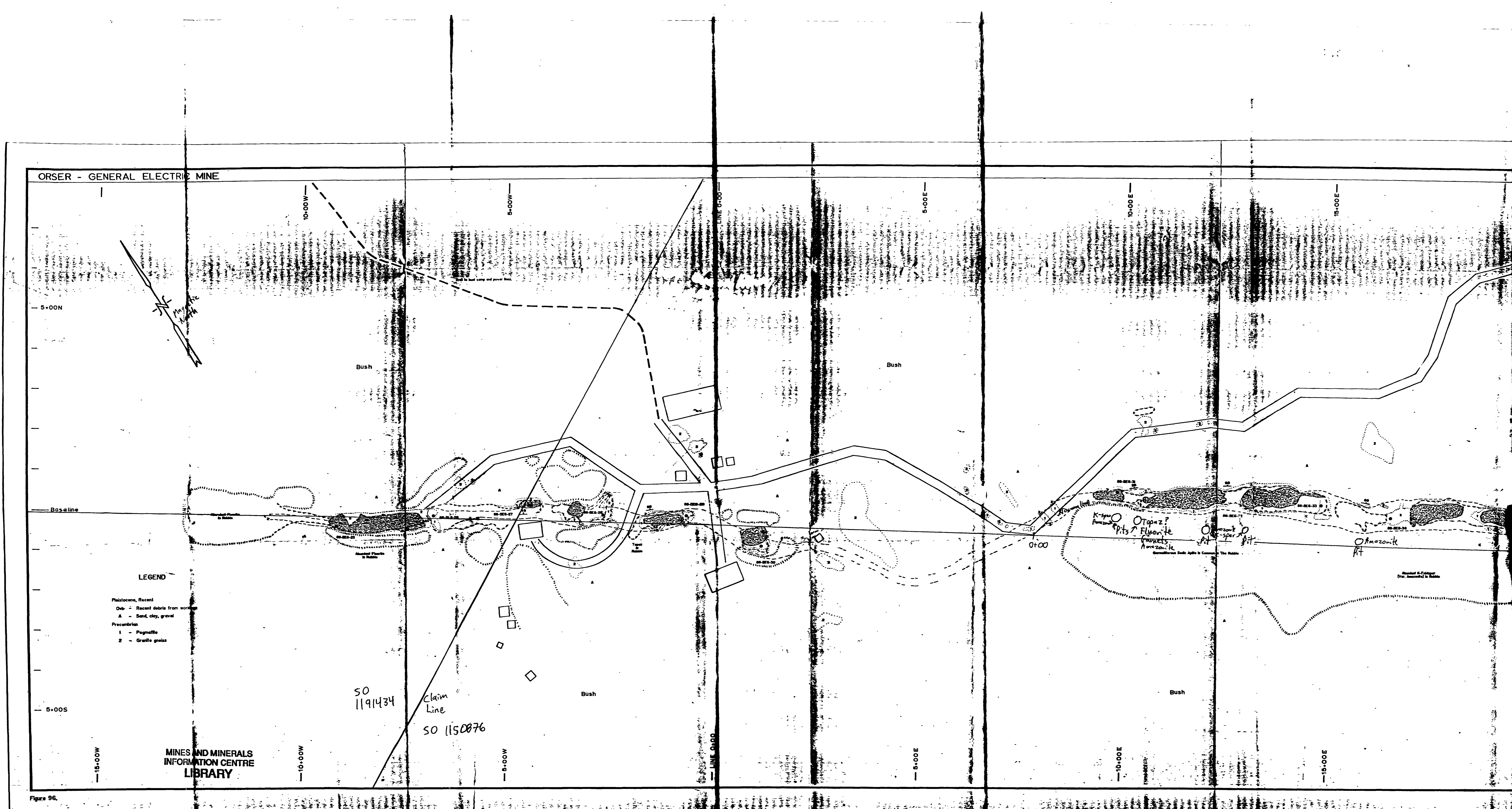
DATE OF ISSUE
MAY 19 1995
SOUTHERN ONTARIO
MINING DIVISION

DATE OF ISSUE
MAY 19 1991
SOUTHERN ONTARIO
MINING DIVISION

PATENTED FOR S.R.O. ... PATENTED FOR S.R. & M.R. ... or ...



THE INFORMATION THAT APPEARS ON THIS MAP HAS BEEN COMPIL FROM VARIOUS SOURCES AND ACCURACY IS NOT GUARANTEED. THOSE WISHING TO STAKE CLAIMS SHOULD CONSULT WITH THE MIN RECORDER, MINISTRY OF NATURAL RESOURCES, NORTHERN DEVELOPMENT AND MINES, FOR ADDITIONAL INFORMATION ON THE STATUS OF LANDS SHOWN HEREON.



A. Fair Ground, B.E. (1940) Ontario Geological Survey, Open File Report 5717
 Polished samples and cabochons were prepared from samples from pits dug into 'mud' (above).



Detailed Geological Map on Part of Mining Claim SO 1150872 (two units)
 Lots 15 S $\frac{1}{2}$, 16 S $\frac{1}{2}$, Concession x1, Monmouth Township, Haliburton County,
 Southern Ontario Mining Division

Legend

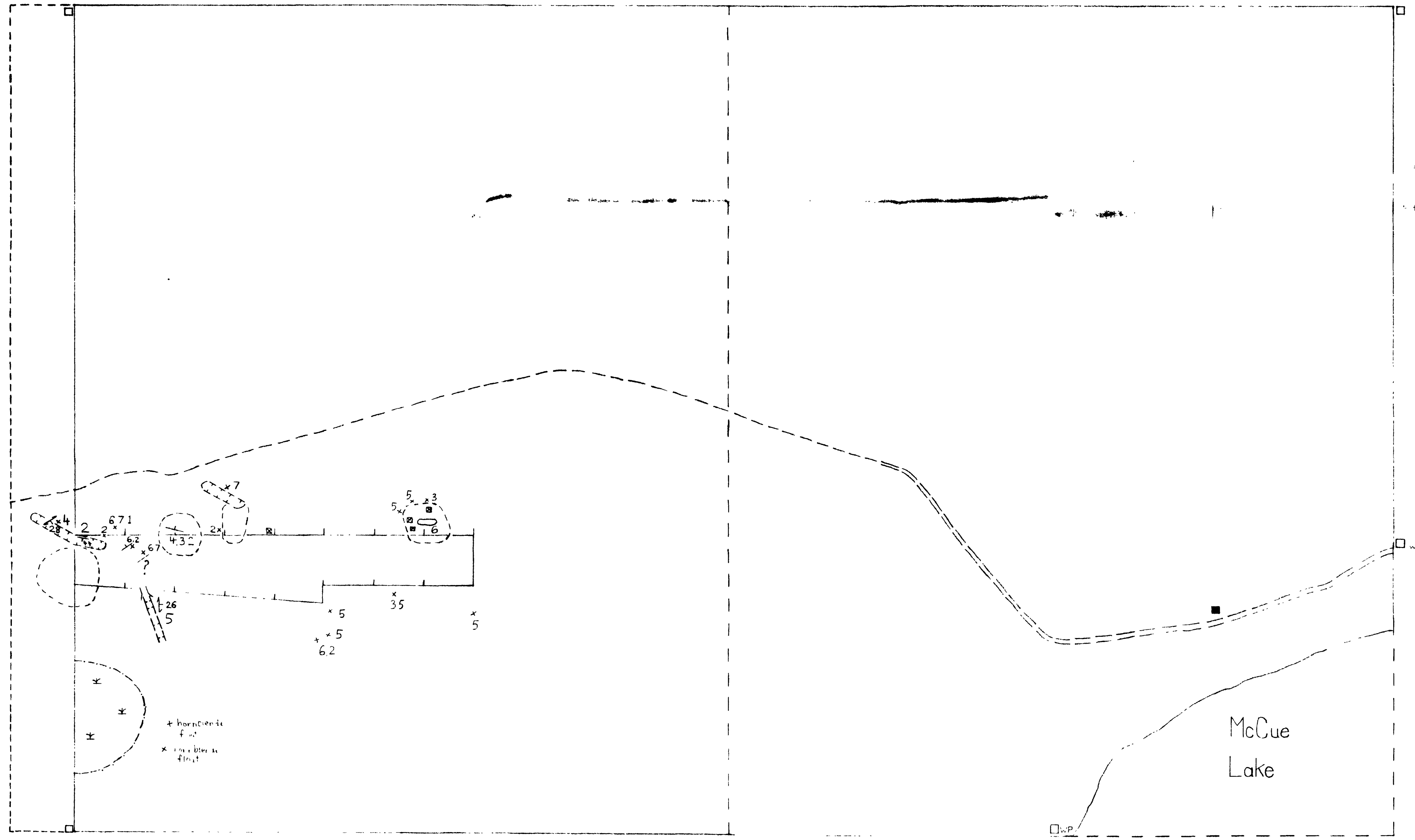
- 1 pegmatite
- 2 calcite vein
- 3 quartzite
- 4 feldspathic gneiss
- 5 marble
- 6 syenite
- 7 amphibolite
- x, O Bedrock Outcrop (small, large)
- H, □ Trench, pit
- */ Foliation
- / ? Orientation of Vein (inclined, dip unknown)
- Road
- - - Trail
- ⊛ Marsh, Swamp
- , □ WP Mining Claim Post, Witness Post
- Dumps
- || Adit
- House
- +— Traverse Line with Flagged Station

0m 100m

1 1500

Note: 1) This is a field legend and is subject to revision as a result of subsequent field or laboratory investigations.
 2) No geochronology is implied by the order of lithologic units.

S. Harper
 Prepared by O Bolton and
 S Harper 1994



GRANVILLE
PT. VI
VII

50
1191434

VII

EO
SRO
2979
50
115
876
SRO

(P)
S.R.O.
VI

(P)
S.R.O.

(P)
S.R.O.
V

IV

16 15 14 13 12 11 10 9 8 7 6 5 4 3 2

BON

ECHO

III

EFFINGHAM TWP.
Wolf L
PROVINCIAL M-87
PARK

II

12, v. 2

I



31F03SW0001 2 18038 EFFINGHAM

240

10000

TWP

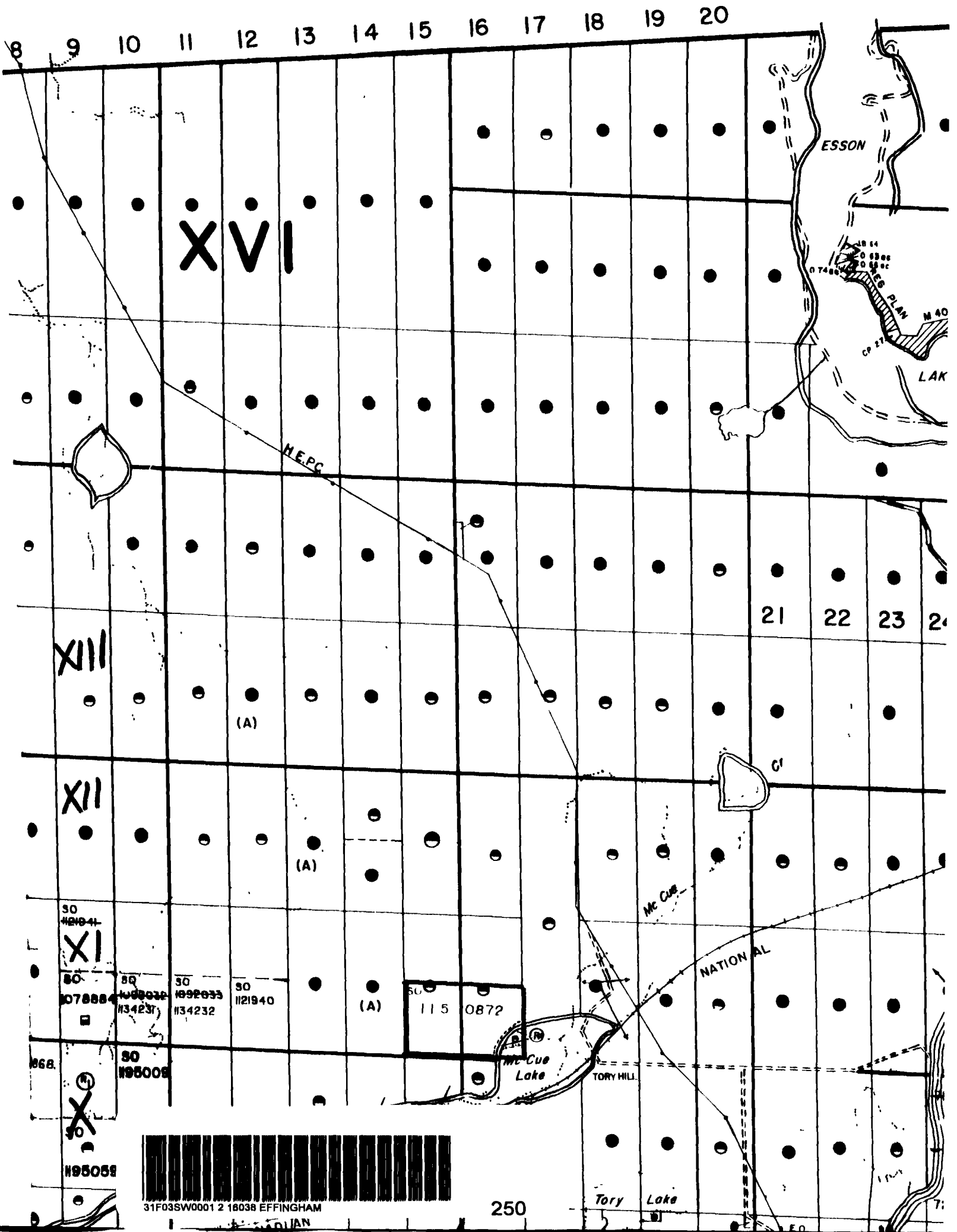
1525

2.16038

MONMOUTH Twp.

G-1298

Dudley Twp.



31F03SW0001 2 16038 EFFINGHAM

250

Tory Lake