



31L01NE0006 11 MARIA

010

DIAMOND DRILLING

Township: Maria

Report No: 11

WORK PERFORMED FOR: Hartford Resources Inc.

RECORDED HOLDER: SAME AS ABOVE [x]

: OTHER []

<u>CLAIM NO.</u>	<u>HOLE NO.</u>	<u>FOOTAGE</u>	<u>DATE</u>	<u>NOTE</u>
EO 608346	84-2	163'	Dec/84	(1)
EO 608347	84-3	138'	Dec/84	(1)
	84-7+85-7	320'	Dec/84-Sept/85	(1) (2)
	85-18	225'	July/85	(1)
	85-19	247'	July-Aug/85	(1)
	85-20	268'	Aug/85	(1)
	85-21	197'	Aug/85	(1)
	85-25	208'	Aug/85	(1)
	85-26	258'	Aug/85	(1)
	85-27	168'	Aug/85	(1)
	85-28	158'	Aug/85	(1)
	85-29	178'	Aug/85	(1)
	85-30	218'	Aug/85	(1)
	85-31	218'	Aug/85	(1)
	85-32	168'	Aug/85	(1)
EO 608347	85-33	268'	Aug/85	(1)
	85-34	308'	Aug-Sept/85	(1)
	85-35	268'	Sept/85	(1)
	85-37	268'	Sept/85	(1)
EO 608348	84-4+85-4	238'	Dec/84, July/85	(1) (3)
	84-5	138'	Dec/84	(1)
	84-6	168'	Dec/84	(1)
	85-15	168'	July/85	(1)
	85-16	150'	July/85	(1)
	85-17	158'	July/85	(1)
EO 608349	85-22	158'	Aug/85	(1)
	85-23	138'	Aug/85	(1)
	85-24	129'	Aug/85	(1)
EO 608367	85-9	123'	July/85	(1)
	85-10	122'	July/85	(1)
EO 608370	85-11	248'	July/85	(1)
	85-14	198'	July/85	(1)
EO 608371	85-12	168'	July/85	(1)
	85-13	118'	July/85	(1)
EO 777273	85-8	123'	July/85	(1)
EO 800881	85-39	238'	Sept/85	(1)
	85-40	258'	Sept/85	(1)

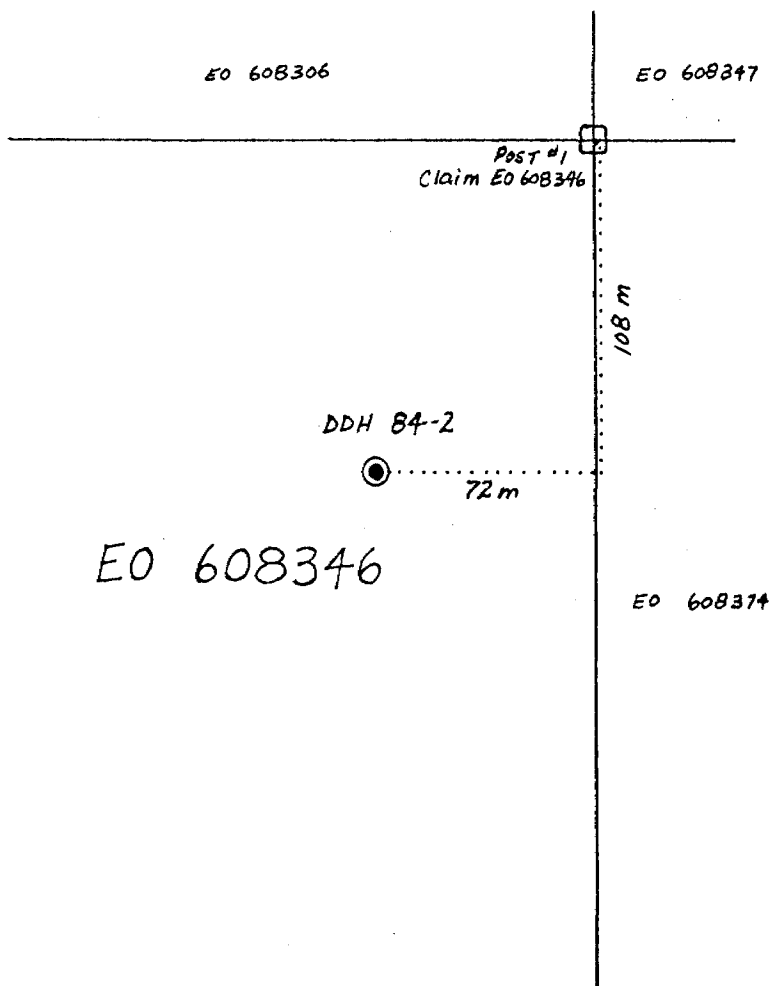
NOTES:

- (1) #66-85
- (2) Hole 85-7 is extension of 84-7
- (3) Hole 85-4 is extension of 84-4

HARTFORD RESOURCES, INC.
MARIA TWP., ONTARIO
CLAIM EO 608346

Sketch of Diamond Drill Holes Drilled on Claim EO 608346
in Relation to the nearest claim post.

SCALE 1:2500



DIAMOND DRILL HOLE NO. BA-2

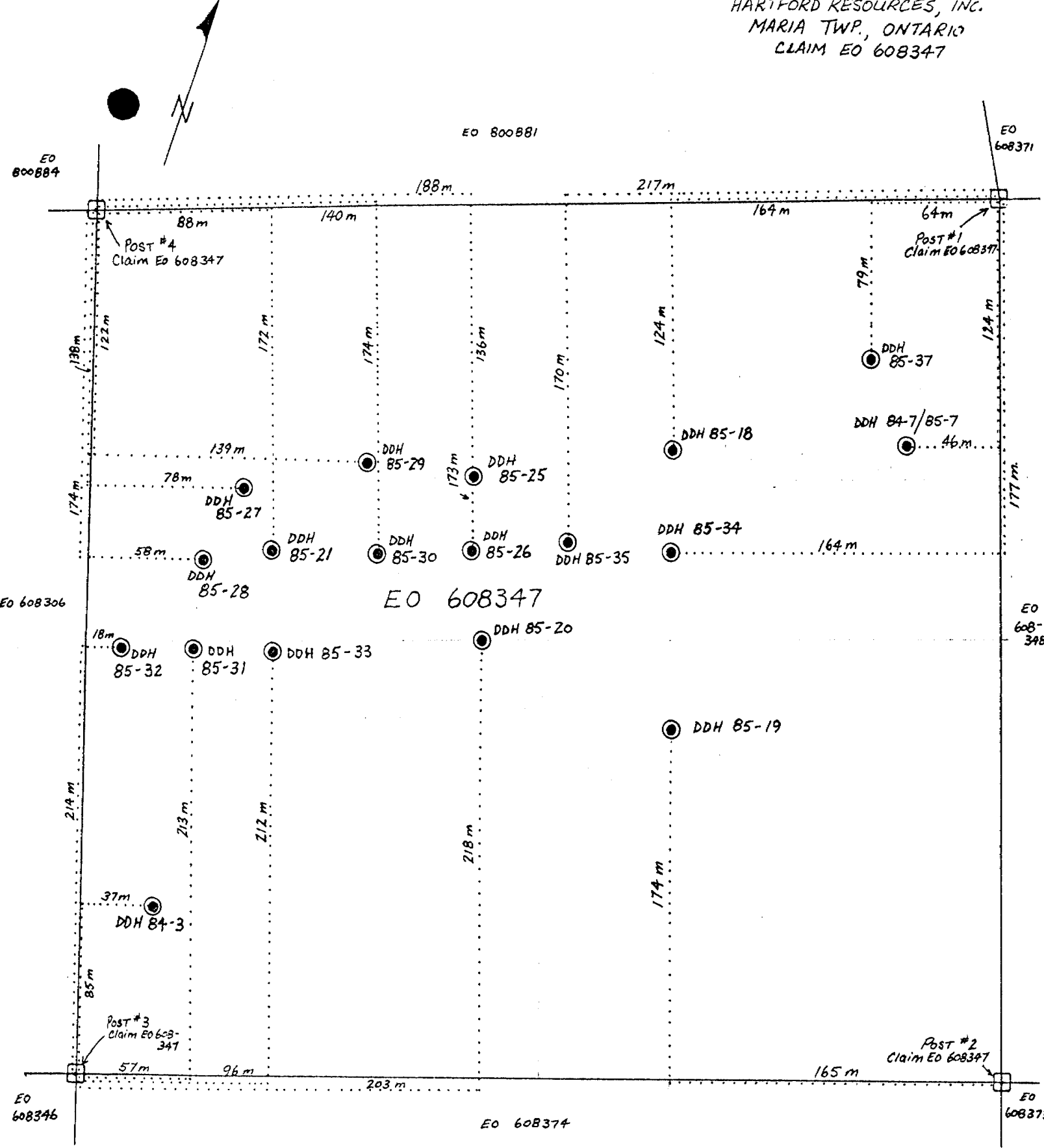
Location: L Lat. _____
 Dep. _____
 Elev. at Collar 1040'
 Dip at Collar -90°
 at _____
 at _____
 at _____

Hole - Started NOV. 30, 1984
 Completed DEC 1, 1984
 Depth 163'
 Logged by U. Schmidt
 Remarks 80 CORE 1 1/2"

Depth		DESCRIPTION	SAMPLE		ASSAY		
From	To		LENGTH	No.	% -	% -	REMARKS
0	4'	Casing - <u>Overburden</u>					
4'	73.5'	<u>Graphitic Gneiss</u> - graphitic and pyritic biotite - feldspar-quartz gneiss; graphite					
73.5'	101.5'	(gradational contacts) <u>Barren Gneiss</u> - biotite-garnet-quartzo-feldspathic gneiss					
101.5'	123'	<u>Graphitic Gneiss</u> - chloritic biotite-quartzo-feldspathic gneiss; graphite					
123'	163'	<u>Barren Gneiss</u> - biotite-garnet-quartzo-feldspathic gneiss.					
		- END OF HOLE -					

U. Schmidt

HARTFORD RESOURCES, INC.
 MARIA TWP., ONTARIO
 CLAIM EO 608347



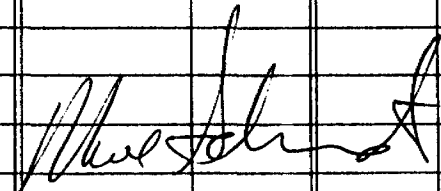
Sketch of Diamond Drill Holes Drilled on Claim EO 608347
 in Relation to the Nearest Claim Post.

SCALE 1:2500

DIAMOND DRILL HOLE NO. 84-3

Location: L Lat. _____
 Dep. _____
 Elev. at Collar 1040'
 Dip at Collar -90°
 at _____
 at _____
 at _____

Hole - Started Dec. 1/84
 Completed Dec. 2/84
 Depth 138'
 Logged by U. Schmidt
 Remarks BO core 1 1/2"

Depth		DESCRIPTION	SAMPLE		ASSAY		
From	To		LENGTH	No.	% -	% -	REMARKS
0	4'	Casing - <u>Overburden</u>					
4'	116'	<u>Graphitic Gneiss</u> - white and grey-green interbanded chloritic, graphitic, pyritic biotite quartzo-feldspathic gneiss					
116'	133'	<u>Barren Gneiss</u> - biotite garnet quartzo-feldspathic gneiss, granular to coarse granitic textured interbands					
133'	138'	<u>Graphitic Gneiss</u> - laminated chloritic-graphitic quartzo-feldspathic gneiss					
		- END OF HOLE -					
							

DIAMOND DRILL HOLE NO. 84-7 + 85-7 (extension of hole 84-7)

Location: L Lat. _____
 Dep. _____
 Elev. at Collar 1020'
 Dip at Collar -90°
 at _____
 at _____
 at _____

Hole - Started 84-7 Dec. 4/84 to Dec. 4/84
 Completed 85-7 Sept. 10/85 to Sept. 11/85
 Depth 153' + 175' = 328'
 Logged by U. Schmidt
 Remarks B@ Core 1 1/2"

Depth		DESCRIPTION	SAMPLE		ASSAY		
From	To		LENGTH	No.	% -	% -	REMARKS
0	6'	Casing - <u>Overburden</u>					
6'	118.5'	<u>Graphitic Gneiss - laminated chloritic - phlogopite - quartz - feldspathic gneiss; pyritic, graphitic</u>					
118.5'	147'	<u>Transitional Gneiss - graphitic biotite - muscovite gneiss.</u>					
147'	158'	<u>Barren Gneiss - biotite - garnet - quartz - feldspathic gneiss</u>					
	* 153'	<u>END OF HOLE 84-7, START OF EXTENSION 85-7</u>					
158'	164'	<u>Graphitic Gneiss and Transitional Gneiss - phlogopite - graphite - amphibole gneiss and biotite - muscovite - amphibole gneiss</u>					
164'	168.5'	<u>Migmatite</u>					
168.5'	171'	<u>Transitional Barren Gneiss - biotite - muscovite gneiss.</u>					
171'	188'	<u>Graphitic Gneiss - finely banded phlogopite - amphibole gneiss; graphite</u>					
188'	215.5'	<u>Barren Gneiss - biotite - garnet - amphibole gneiss.</u>					

U. Schmidt

DIAMOND DRILL HOLE NO. 84-7 # 85-7 extension

Location: L Lat. _____
 Dep. _____
 Elev. at Collar 1020'
 Dip at Collar -90°
 at _____
 at _____
 at _____

Hole - Started 84-7 Dec 4, 1984
 Completed 85-7 Sept 10-11, 1985
 Depth 328'
 Logged by U. Schmidt
 Remarks BQ Core 1 1/2"

Depth		DESCRIPTION	SAMPLE		ASSAY		
From	To		LENGTH	No.	% -	% -	REMARKS
215.5'	235.5'	<u>Graphitic Gneiss - phlogopite-graphite amphibole-garnet gneiss.</u>					
235.5'	239'	<u>Barren Gneiss - leucocratic biotite garnet amphibole gneiss</u>					
239'	241'	<u>Graphitic Gneiss - biotite-graphite - phlogopite - amphibole gneiss</u>					
241'	243.5'	<u>Transitional Gneiss biotite-muscovite-garnet gneiss</u>					
243.5'	285'	<u>Barren Gneiss - leucocratic banded biotite garnet gneiss</u>					
285'	307'	<u>Graphitic Gneiss - banded, graphite phlogopite amphibole gneiss</u>					
307'	309'	<u>Transitional Gneiss - biotite-muscovite-garnet-gneiss</u>					
309'	328'	<u>Barren Gneiss - leucocratic biotite-garnet gneiss</u>					
		<u>- END OF HOLE -</u>					

U. Schmidt

Sheet No...!?!..

DIAMOND DRILL HOLE NO. 85-18

Location: L Lat. _____
 Dep. _____
 Elev. at Collar 1010'
 Dip at Collar - 90°
 at _____
 at _____
 at _____

Hole - Started July 25, 1985
 Completed July 26, 1985
 Depth 225'
 Logged by U. Schmidt
 Remarks 80 Core 1 1/2"

Depth		DESCRIPTION	SAMPLE		ASSAY		
From	To		LENGTH	No.	% -	% -	REMARKS
0	5'	casing - <u>Overburden</u>					
5'	211.5'	<u>Graphitic Gneiss -</u> <u>banded phlogopite-graphite-</u> <u>amphibole-quartzo-feldspathic</u> <u>gneiss -; color gradations</u> <u>from pale grey green to</u> <u>dark grey green.</u>					
211.5'	225'	<u>Barren Gneiss - dark</u> <u>grey and white banded</u> <u>leucocratic biotite-garnet-</u> <u>quartzo-feldspathic gneiss.</u>					
		<u>- END OF HOLE -</u>					

U. Schmidt

DIAMOND DRILL HOLE NO. 85-19

Location: L Lat. _____
 Dep. _____
 Elev. at Collar 980'
 Dip at Collar -90°
 at _____
 at _____
 at _____

Hole - Started July 31, 1985
 Completed Aug 1, 1985
 Depth 247'
 Logged by U. Schmidt
 Remarks BQ core 1 1/2"

Depth		DESCRIPTION	SAMPLE		ASSAY		
From	To		LENGTH	No.	% -	% -	REMARKS
0	4'	Casing - Overburden					
4'	14'	Barren Gneiss - biotite garnet-quartzo-feldspathic gneiss; melanocratic					
14'	17'	Transitional Gneiss - biotite-muscovite-quartzo- feldspathic gneiss.					
17'	35.5'	Barren Gneiss - leucocratic biotite, quartzo-feldspathic gneiss					
35.5'	123'	Graphitic Gneiss - banded phlogopite-amphibole-quartzo- feldspathic gneiss, graphite					
123'	125.5'	Barren Gneiss - banded biotite garnet-sillimanite-gtz-feldspar gneiss					
125.5'	130'	Graphitic Gneiss - phlogopite qtz-feldspar gneiss; graphite					
130'	135'	Barren Gneiss - biotite garnet-sillimanite-quartz- feldspar gneiss.					
135'	140'	Graphitic Gneiss - phlogopite quartz-feldspar gneiss; graphite					
140'	150'	Barren Gneiss - banded biotite-garnet-sillimanite-gtz-					

DIAMOND DRILL HOLE NO. 85-19

Location: L Lat. _____
 Dep. _____
 Elev. at Collar 980'
 Dip at Collar -90°
 at _____
 at _____
 at _____

Hole - Started July 31, 1985
 Completed Aug 1, 1985
 Depth 247'
 Logged by U. Schmidt
 Remarks BD Core 1 1/2"

Depth		DESCRIPTION	SAMPLE		ASSAY		
From	To		LENGTH	No.	% -	% -	REMARKS
		(cont'd.)					
150'	157'	feldspar gneiss Graphitic Gneiss - banded phlogopite - amphibole - quartz feldspar gneiss; graphite					
157'	170'	Transitional Barren Gneiss biotite - garnet - sillimanite - quartz - feldspathic gneiss					
170'	175.5'	Graphitic Gneiss - phlogopite - amphibole - qtz - feldspathic gneiss; finely banded; graphite					
175.5'	183.5'	Transitional Barren Gneiss - banded biotite garnet - sillimanite qtz - feldspathic gneiss.					
183.5'	247'	Graphitic Gneiss - phlogopite - amphibole quartz - feldspathic gneiss - minor garnet, graphite					
		- END OF HOLE -					

U. Schmidt

Sheet No....!..of...!

DIAMOND DRILL HOLE NO. 85-20

Location: L Lat. _____
 Dep. _____
 Elev. at Collar 990'
 Dip at Collar -90°
 at _____
 at _____
 at _____

Hole - Started Aug. 2, 1985
 Completed Aug 3, 1985
 Depth 268'
 Logged by U. Schmidt
 Remarks BC Core 1 1/2"

Depth		DESCRIPTION	SAMPLE		ASSAY		
From	To		LENGTH	No.	% -	% -	REMARKS
0	5'	Casing - Overburden					
5'	43'	Graphitic Gneiss - banded phlogopite - amphibole - quartz feldspar gneiss; graphite					
43'	47'	Biotite - Garnet Amphibolite with Pyrite, pyrrhotite and chalcopyrite					
47'	120'	Graphitic Gneiss - banded phlogopite - amphibole - qtz - feldspar gneiss; graphite					
120'	145'	Transitional Barren Gneiss - biotite - muscovite - garnet - qtz - feldspar gneiss.					
145'	153'	Graphitic Gneiss - phlogopite - graphite - amphibole - quartz - feldspar gneiss					
153'	155'	Transitional Barren Gneiss - biotite - muscovite - qtz - feldspar gneiss					
155'	159.5'	Quartz Vein - fractured.					
159.5'	171'	Barren Gneiss - biotite - garnet muscovite, quartz feldspar gneiss					
171'	250'	Graphitic Gneiss - phlogopite - graphite - amphibole - qtz - feldspar gneiss					
250'	268'	Barren Gneiss - biotite - qtz - feldspar gneiss - END OF HOLE -					

U. Schmidt

DIAMOND DRILL HOLE NO. 85-21

Location: L Lat. _____
 Dep. _____
 Elev. at Collar 1005'
 Dip at Collar -90°
 at _____
 at _____
 at _____

Hole - Started Aug. 3, 1985
 Completed Aug. 4, 1985
 Depth 197'
 Logged by U. Schmidt
 Remarks BQ Core 1 1/2"

Depth		DESCRIPTION	SAMPLE		ASSAY		
From	To		LENGTH	No.	% -	% -	REMARKS
0	3'	Casing-Overburden					
3'	48'	Graphitic Gneiss - banded, graphite- phlogopite-amphibole-quartz- feldspar gneiss					
48'	52'	Lamprophyre dyke					
52'	180'	Graphitic Gneiss - banded, graphite- phlogopite-amphibole-quartz- feldspar gneiss					
180'	184'	Barren Gneiss - biotite- garnet leucocratic gneiss.					
184'	187'	Graphitic Gneiss - banded, graphite- phlogopite-amphibole gneiss.					
187'	197'	Barren Gneiss - banded biotite-quartz-feldspar gneiss.					
		- END OF HOLE -					

U. Schmidt

DIAMOND DRILL HOLE NO. 85-25

Location: L Lat. _____
 Dep. _____
 Elev. at Collar 1000'
 Dip at Collar -90°
 at _____
 at _____
 at _____

Hole - Started Aug. 13, 1985
 Completed Aug. 14, 1985
 Depth 208'
 Logged by U. Schmidt
 Remarks 80 Core 1 1/2"

Depth		DESCRIPTION	SAMPLE		ASSAY		
From	To		LENGTH	No.	% -	% -	REMARKS
0	5'	Casing - broken bedrock					
5'	26'	Graphitic Gneiss - banded graphite-amphibole-phlogopite-quartzofeldspathic gneiss.					
26'	30'	Amphibolite - amphibole-biotite-garnet - pyrrhotite-rich amphibolite.					
30'	91'	Graphitic Gneiss - banded graphite-phlogopite-amphibole gneiss with migmatitic bands (qtz-feldspar)					
91'	100.5'	Barren Gneiss - melanocratic biotite-garnet-sillimanite qtz-feldspar gneiss					
100.5'	105.5'	Graphitic Gneiss - phlogopite-graphite-amphibole - qtz-feldspar gneiss					
105.5'	110'	Transitional Barren Gneiss melanocratic biotite-muscovite quartz-feldspar gneiss					
110'	114'	Quartz vein - milky white					
114'	118.5'	Barren Gneiss - biotite garnet gneiss					
118.5'	183'	Graphitic Gneiss - finely banded phlogopite-sillimanite? garnet quartz-feldspar gneiss graphite.					

Sheet No. 2 of 2

DIAMOND DRILL HOLE NO. 85-25

Location: L Lat. _____
 Dep. _____
 Elev. at Collar 1000'
 Dip at Collar -90°
 at _____
 at _____
 at _____

Hole - Started Aug. 13/85
 Completed Aug. 14/85
 Depth 208'
 Logged by U. Schmidt
 Remarks BQ core 1 1/2"

Depth		DESCRIPTION	SAMPLE		ASSAY		
From	To		LENGTH	No.	% -	% -	REMARKS
<u>183'</u>	<u>208'</u>	<u>Barren Gneiss - leucocratic to melanocratic biotite-quartz feldspar gneiss.</u>					
		<u>- END OF HOLE -</u>					

U. Schmidt

DIAMOND DRILL HOLE NO. 85-26

Location: L Lat. _____
 Dep. _____
 Elev. at Collar 1005'
 Dip at Collar -90°
 at _____
 at _____
 at _____

Hole - Started Aug. 14, 1985
 Completed Aug. 15, 1985
 Depth 258'
 Logged by U. Schmidt
 Remarks BQ Core 1 1/2"

Depth		DESCRIPTION	SAMPLE		ASSAY		
From	To		LENGTH	No.	% -	% -	REMARKS
0	4'	Casing-Overburden					
4	101'	Graphitic Gneiss - phlogopite amphibole garnet gneiss minor migmatitic and amphibolitic bands; graphite.					
101'	105'	Lamprophyre dyke					
105'	126.5'	Graphitic Gneiss - phlogopite -amphibole banded gneiss; graphite					
126.5'	133'	Transitional Barren Gneiss - biotite muscovite w/ pink migmatite bands.					
133'	135'	Graphitic Gneiss - finely banded phlogopite amphibole gneiss; graphite.					
135'	138'	Transitional Barren Gneiss biotite muscovite garnet gneiss					
138'	142'	Graphitic Gneiss - thinly banded biotite ^(phlogopite) amphibole gneiss; graphite					
142'	148'	Transitional Barren Gneiss biotite muscovite garnet gneiss with migmatitic bands					
148'	153'	Barren Gneiss - leucocratic biotite Gneiss					
153'	192'	Graphitic Gneiss					

DIAMOND DRILL HOLE NO. 85-26

Location: L Lat. _____
 Dep. _____
 Elev. at Collar 1005'
 Dip at Collar -90°
 at _____
 at _____
 at _____

Hole - Started Aug. 14/85
 Completed Aug. 15/85
 Depth 258'
 Logged by U. Schmidt
 Remarks 80 Core 1 1/2"

Depth		DESCRIPTION	SAMPLE		ASSAY		
From	To		LENGTH	No.	% -	% -	REMARKS
192'	196.5'	Graphitic Gneiss (cont'd) - phlogopite - amphibole quartz feldspar gneiss; graphite.					
		Transitional Barren Gneiss - biotite - garnet - sillimanite gneiss.					
196.5'	240.5'	Graphitic Gneiss - phlogopite amphibole quartz feldspar gneiss; graphite.					
240.5'	243'	white Pegmatite					
243'	258'	Barren Gneiss - leucocratic biotite quartz-feldspathic gneiss					
		- END OF HOLE -					

U. Schmidt

Sheet No...!...f...!

DIAMOND DRILL HOLE NO. 85-27

Location: L Lat. _____
 Dep. _____
 Elev. at Collar 1000'
 Dip at Collar -90°
 at _____
 at _____
 at _____

Hole - Started Aug. 16, 1985
 Completed Aug. 17, 1985
 Depth 168'
 Logged by U. Schmidt
 Remarks BQ Core 1 1/2"

Depth		DESCRIPTION	SAMPLE		ASSAY		
From	To		LENGTH	No.	% -	% -	REMARKS
0	7'	<u>Casing - Overburden</u>					
7	43'	<u>Graphitic Gneiss - phlogopite amphibole gneiss, banded. - some garnet. ; graphite.</u>					
43'	46'	<u>Transitional Barren Gneiss - biotite-amphibole-muscovite gneiss.</u>					
46'	106'	<u>Graphitic Gneiss - phlogopite-graphite-amphibole - minor garnet gneiss.</u>					
106'	107.5'	<u>Transitional Barren Gneiss - biotite-muscovite-garnet gneiss</u>					
107.5'	136'	<u>Graphitic Gneiss - banded, graphite amphibole-phlogopite gneiss</u>					
136'	140'	<u>Barren Gneiss - leucocratic biotite quartz-feldspar-garnet gneiss</u>					
140'	142'	<u>Graphitic Gneiss - phlogopite amphibole gn.</u>					
142'	149'	<u>Barren Gneiss - melanocratic biotite garnet gneiss.</u>					
149'	155.5	<u>Biotite-Quartz-Feldspar Pegmatite</u>					
155.5'	168'	<u>Barren Gneiss - melanocratic biotite quartz-feldspathic gneiss</u>					
		<u>- END OF HOLE -</u>					

U. Schmidt

DIAMOND DRILL HOLE NO. 85-28

Location: L Lat. _____
 Dep. _____
 Elev. at Collar 1000'
 Dip at Collar -90°
 at _____
 at _____
 at _____

Hole - Started Aug. 17, 1985
 Completed Aug. 18, 1985
 Depth 158'
 Logged by U. Schmidt
 Remarks 80 Core 1 1/2"

Depth		DESCRIPTION	SAMPLE		ASSAY		
From	To		LENGTH	No.	% -	% -	REMARKS
0	20'	Casing - Overburden to 18.5'					
20'	35.5'	Graphitic Gneiss - banded, graphite-biotite-amphibole gneiss					
35.5'	39.5'	Barren Gneiss - biotite gneiss with pink migmatitic bands.					
39.5'	105'	Graphitic Gneiss - phlogopite-graphite-amphibole gneiss with minor garnet.					
105'	107'	Migmatitic biotite garnet Pegmatite.					
107'	114'	Barren Gneiss - leucocratic pink biotite gneiss					
114'	118.5'	Pink Pegmatite with minor inclusions of Barren gneiss					
118.5'	137.5'	Graphitic Gneiss - banded phlogopite-biotite-amphibole gneiss; graphite.					
137.5'	158'	Barren Gneiss - leucocratic biotite-garnet quartz-feldspathic gneiss.					
		- END OF HOLE -					

U. Schmidt

Sheet No...!..of...!

DIAMOND DRILL HOLE NO. 85-29

Location: L Lat. _____
 Dep. _____
 Elev. at Collar 1000'
 Dip at Collar -90°
 at _____
 at _____
 at _____

Hole - Started Aug 18, 1985
 Completed Aug 21, 1985
 Depth 178'
 Logged by W. Schmidt
 Remarks BQ Core 1 1/2"

Depth		DESCRIPTION	SAMPLE		ASSAY		
From	To		LENGTH	No.	% -	% -	REMARKS
0	2'	casing. - <u>Overburden</u>					
2	65.5'	<u>Graphitic Gneiss - banded, graphite- phlogopite - amphibole gneiss</u>					
65.5'	71'	<u>Transitional Barren Gneiss - biotite - muscovite - minor garnet gneiss.</u>					
71'	79'	<u>Migmatite</u>					
79'	99.5'	<u>Transitional Barren Gneiss - banded biotite - muscovite - garnet gneiss</u>					
99.5'	156.5'	<u>Graphitic Gneiss - banded phlogopite - amphibole - graphite - sillimanite - garnet gneiss</u>					
156.5'	178'	<u>Barren Gneiss - biotite garnet quartzo - feldspathic gneiss</u>					
		- END OF HOLE -					

W. Schmidt

Sheet No...!...of!

DIAMOND DRILL HOLE NO. 85-30

Location: L Lat. _____
 Dep. _____
 Elev. at Collar 1005'
 Dip at Collar -90°
 at _____
 at _____
 at _____

Hole - Started Aug. 22, 1985
 Completed Aug. 22, 1985
 Depth 218'
 Logged by U. Schmidt
 Remarks BQ Core 1 1/2"

Depth		DESCRIPTION	SAMPLE		ASSAY		
From	To		LENGTH	No.	% -	% -	REMARKS
0	2'	Casing. - Overburden.					
2	114'	Graphitic Gneiss - phlogopite amphibole - minor garnet - graphite - banded gneiss; minor migmatite bands.					
114'	116'	Transitional Barren Gneiss - banded biotite muscovite garnet gneiss.					
116'	143'	Barren Gneiss - biotite garnet gneiss, some migmatite bands					
143'	153.5'	Graphitic Gneiss - phlogopite - amphibole gneiss, graphite.					
153.5	162'	Graphitic Transitional Gneiss biotite - muscovite garnet gneiss					
162'	165'	Graphitic Gneiss - banded, graphite - phlogopite - amphibole gneiss					
165'	169	Graphitic Transitional Gneiss - biotite - muscovite garnet gneiss					
169'	203.5'	Graphitic Gneiss - phlogopite - graphite - amphibole gneiss - banded					
203.5'	218'	Barren Gneiss - biotite - garnet quartz - feldspathic gneiss.					
		END OF HOLE -					

U. Schmidt

DIAMOND DRILL HOLE NO. B5-31

Location: L Lat. _____
 Dep. _____
 Elev. at Collar 1035'
 Dip at Collar -90°
 at _____
 at _____
 at _____

Hole - Started Aug. 23, 1985
 Completed Aug. 24, 1985
 Depth 218'
 Logged by U. Schmidt
 Remarks BQ core 1 1/2"

Depth		DESCRIPTION	SAMPLE		ASSAY		
From	To		LENGTH	No.	% -	% -	REMARKS
0	7'	Casing - bedrock at surface.					
7'	32'	Graphitic Gneiss - banded, graphite phlogopite - amphibole gneiss					
32'	35'	Lamprophyre Dyke - fractured					
35'	73'	Graphitic Gneiss - phlogopite-graphite amphibole gneiss, minor migmatite and bands of Transitional Barren Gneiss ($< 2'$ thick).					
73'	76'	Transitional Barren Gneiss - biotite-muscovite gneiss					
76'	87'	Graphitic Gneiss - banded phlogo- pite - amphibole gneiss; graphite					
87'	89'	Migmatite					
89'	97'	Graphitic Gneiss - banded phlogo- pite - amphibole gneiss; graphite					
97'	112'	Barren Gneiss - biotite - garnet quartz-feldspathic gneiss.					
112'	114'	Migmatite.					
114'	119'	Transitional Barren Gneiss - biotite-muscovite garnet gneiss.					
119'	163'	Graphitic Gneiss - banded, graphite- phlogopite - amphibole - minor garnet gneiss					

U. Schmidt

DIAMOND DRILL HOLE NO. 85-31

Location: L Lat. _____
 Dep. _____
 Elev. at Collar 1035'
 Dip at Collar -90°
 at _____
 at _____
 at _____

Hole - Started Aug. 23/85
 Completed Aug. 24/85
 Depth 218'
 Logged by U. Schmidt
 Remarks BD core 1 1/2"

Depth		DESCRIPTION	SAMPLE		ASSAY		
From	To		LENGTH	No.	% -	% -	REMARKS
163'	187'	<u>Barren Gneiss - leucocratic pink biotite-garnet-quartzofeldspathic gneiss.</u>					
187'	201'	<u>Graphitic Gneiss - banded, graphite-phi-logopite-amphibole-garnet quartzofeldspathic gneiss.</u>					
201'	218'	<u>Barren Gneiss - pink leucocratic biotite-garnet-gneiss.</u>					
		<u>- END OF HOLE -</u>					

U. Schmidt

DIAMOND DRILL HOLE NO. 85-32

Location: L Lat. _____
 Dep. _____
 Elev. at Collar 1010'
 Dip at Collar -90°
 at _____
 at _____
 at _____

Hole - Started Aug. 27, 1985
 Completed Aug 28, 1985
 Depth 168'
 Logged by U. Schmidt
 Remarks BQ Core 1 1/2"

Depth		DESCRIPTION	SAMPLE		ASSAY		
From	To		LENGTH	No.	% -	% -	REMARKS
0	3'	Casing - Overburden to 2.5'					
3'	20'	Graphitic Gneiss - biotite - graphite - amphibole gneiss, banded.					
20'	28'	Barren Transitional Gneiss - biotite - sillimanite - garnet gneiss					
28'	45.5'	Graphitic Gneiss - banded, graphite biotite - amphibole gneiss					
45.5'	69.5'	Barren Gneiss - biotite - garnet gneiss					
69.5'	89.5'	Graphitic Gneiss - biotite - graphite - amphibole gneiss					
89.5'	95'	Barren Gneiss - leucocratic biotite - quartz - feldspar gneiss					
95'	102.5'	Graphitic Gneiss - thin banded biotite amphibole gneiss; graphite					
102.5'	106'	Migmatite					
106'	130'	Barren Gneiss - biotite - garnet gneiss, leucocratic from 120' - 130'					
130'	145'	Graphitic Gneiss - biotite amphibole - garnet gneiss, graphite. leucocratic from 137' - 145'					

Sheet No. 1 of 1

DIAMOND DRILL HOLE NO. 85-33

Location: L Lat. _____
 Dep. _____
 Elev. at Collar 1030'
 Dip at Collar -90°
 at _____
 at _____
 at _____

Hole - Started Aug. 29, 1985
 Completed Aug. 30, 1985
 Depth 268'
 Logged by U. Schmidt
 Remarks BC Core 1 1/2"

Depth		DESCRIPTION	SAMPLE		ASSAY		
From	To		LENGTH	No.	% -	% -	REMARKS
0	6'	Casing - broken weathered ground to 9.5'					
6'	196.5'	Graphitic Gneiss - banded, graphite- phlogopite - amphibole - minor garnet gneiss.					
196.5'	215'	Barren Gneiss - biotite- garnet - quartzo-feldspathic gneiss					
215'	241'	Graphitic Gneiss - banded, graphite phlogopite amphibole gneiss.					
241'	268'	Barren Gneiss - banded biotite - amphibole gneiss with minor interbands of graphitic gneiss.					
		- END OF HOLE -					

U. Schmidt

DIAMOND DRILL HOLE NO. 85-34

Location: L Lat. _____
 Dep. _____
 Elev. at Collar 1050'
 Dip at Collar -90°
 at _____
 at _____
 at _____

Hole - Started Aug. 30, 1985
 Completed Sept. 6, 1985
 Depth 308'
 Logged by U. Schmidt
 Remarks BQ Core 1 1/2"

Depth		DESCRIPTION	SAMPLE		ASSAY		
From	To		LENGTH	No.	% -	% -	REMARKS
0	2'	Casing - bedrock starts at 0.5'					
2'	97'	Graphitic Gneiss - banded, graphite - phlogopite - amphibole gneiss					
97'	101.5'	Lamprophyre dykes					
101.5'	151.5'	Graphitic Gneiss - banded, graphite - phlogopite - amphibole gneiss					
151.5'	154.5'	Transitional Barren Gneiss - biotite - muscovite garnet gneiss					
154.5'	201'	Graphitic Gneiss - finely banded phlogopite - amphibole gneiss; variable pink garnet content.; graphite.					
201'	204'	Lamprophyre dyke.					
204'	230'	Graphitic Gneiss - banded, graphite - phlogopite - amphibole - gneiss					
230'	237'	Migmatite - pegmatitic; 2' band of Barren biotite gneiss at 234' - 236'.					
237'	255'	Graphitic Gneiss - banded, graphite - phlogopite - amphibole gneiss with variable garnet content					
255'	259'	Barren Gneiss - biotite gneiss					
259'	263'	Barren Transitional Gneiss					

DIAMOND DRILL HOLE NO. 85-34

Location: L Lat. _____
 Dep. _____
 Elev. at Collar 1050'
 Dip at Collar -90°
 at _____
 at _____
 at _____

Hole - Started Aug 30/85
 Completed Sept. 6/85
 Depth 308'
 Logged by U. Schmidt
 Remarks BQ Core 1 1/2"

Depth		DESCRIPTION	SAMPLE		ASSAY		
From	To		LENGTH	No.	% -	% -	REMARKS
		<u>Transitional Barren Gneiss (cont'd)</u>					
		<u>-biotite-muscovite gneiss</u>					
<u>263'</u>	<u>266.5'</u>	<u>Barren Gneiss - biotite -</u>					
		<u>garnet gneiss.</u>					
<u>266.5'</u>	<u>281.5'</u>	<u>Graphitic Gneiss - banded, graphite-</u>					
		<u>phlogopite-amphibole gneiss with</u>					
		<u>variable garnet content.</u>					
<u>281.5'</u>	<u>288'</u>	<u>Migmatite with 1' band</u>					
		<u>of Barren Gneiss at 284'-285'.</u>					
<u>288'</u>	<u>308'</u>	<u>Barren Gneiss - weakly</u>					
		<u>banded, leucocratic biotite</u>					
		<u>amphibole gneiss.</u>					
		<u>- END OF HOLE -</u>					

U. Schmidt

DIAMOND DRILL HOLE NO. 85-35

Location: L Lat. _____
 Dep. _____
 Elev. at Collar 1030'
 Dip at Collar -90°
 at _____
 at _____
 at _____

Hole - Started Sept 6, 1985
 Completed Sept. 8, 1985
 Depth 268'
 Logged by U. Schmidt
 Remarks BQ Core 1 1/2"

Depth		DESCRIPTION	SAMPLE		ASSAY		
From	To		LENGTH	No.	% -	% -	REMARKS
0	2'	Casing - Overburden					
2'	4'	Graphitic Gneiss - banded phlogopite - amphibole gneiss; graphite					
4'	7'	Migmatite - pegmatitic biotite feldspar migmatite.					
7'	14'	Graphitic Gneiss - banded phlogopite - amphibole gneiss; graphite					
14'	18'	Migmatite - biotite - feldspar - quartz - pyrite pegmatitic migmatite					
18'	115'	Graphitic Gneiss - banded phlogopite - amphibole gneiss with variable garnet content; graphite					
115'	125.5'	Transitional Barren Gneiss - biotite - muscovite - garnet gneiss.					
125.5'	129.5'	Graphitic Gneiss banded phlogopite amphibole gneiss with graphite					
129.5'	138'	Transitional Barren Gneiss - banded biotite muscovite gneiss with mauve garnets.					
138'	146'	Barren Gneiss - leucocratic biotite - muscovite - garnet gneiss					
146'	152'	Graphitic Gneiss - banded phlogopite amphibole garnet gneiss - with graphite					

DIAMOND DRILL HOLE NO. 85-35

Location: L Lat. _____
 Dep. _____
 Elev. at Collar 1030'
 Dip at Collar -90°
 at _____
 at _____
 at _____

Hole - Started Sept. 6/85
 Completed Sept. 8/85
 Depth 268'
 Logged by U. Schmidt
 Remarks BQ Core 1 1/2"

Depth		DESCRIPTION	SAMPLE		ASSAY		
From	To		LENGTH	No.	% -	% -	REMARKS
152'	160'	Transitional Barren Gneiss - banded biotite-muscovite-mauve garnet-gneiss					
160'	216'	Graphitic Gneiss - thinly banded phlogopite-amphibole gneiss, graphite -intermittent muscovite.					
216'	223'	Migmatite - feldspar-quartz- biotite migmatite					
223'	229'	Graphitic Gneiss - phlogopite-graphite garnet gneiss; banded.					
229'	235.5'	Barren Gneiss - leucocratic biotite garnet gneiss.					
235.5'	243.5'	Migmatite - coarse biotite feldspar migmatite + biotite gneiss bands.					
243.5'	268'	Barren Gneiss. - biotite and biotite-garnet-amphibole-quartz- feldspathic gneiss.					
		- END OF HOLE -					

U. Schmidt

DIAMOND DRILL HOLE NO. 85-37

Location: L Lat. _____
 Dep. _____
 Elev. at Collar 1020'
 Dip at Collar -90°
 at _____
 at _____
 at _____

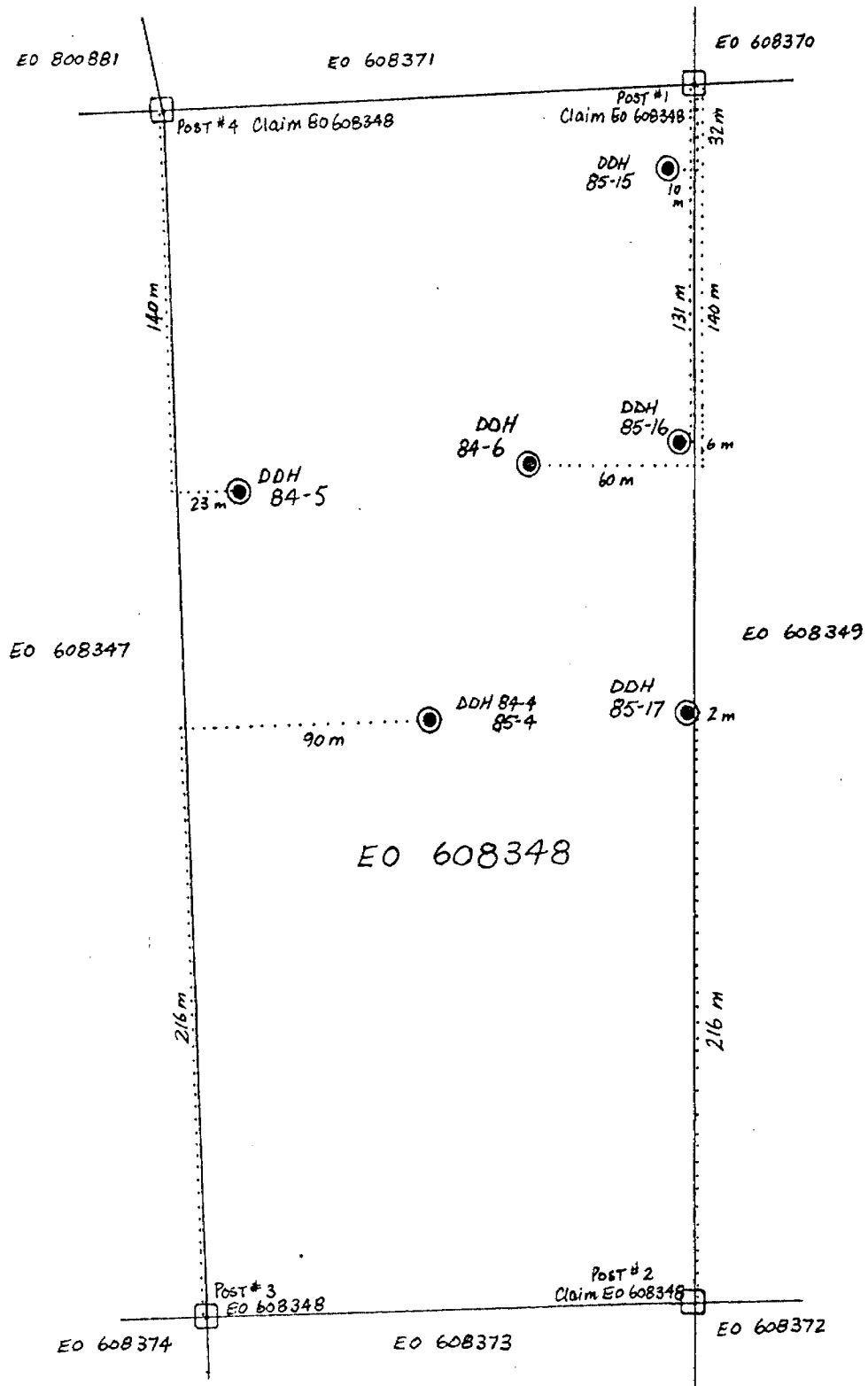
Hole - Started Sept. 12, 1985
 Completed Sept 14, 1985
 Depth 268'
 Logged by U. Schmidt.
 Remarks BC Core 1 1/2"

Depth		DESCRIPTION	SAMPLE		ASSAY		
From	To		LENGTH	No.	% -	% -	REMARKS
0	3'	Casing - bedrock at surface.					
3'	33'	Graphitic Gneiss - banded, graphite phlogopite - amphibole gneiss.					
33'	37'	Migmatite - pegmatitic - migmatite.					
37'	123'	Graphitic Gneiss - banded, graphite - phlogopite - amphibole - gneiss.					
123'	125.5'	Transitional Barren Gneiss - banded biotite - muscovite gneiss					
125.5'	146.5'	Barren Gneiss - banded biotite - garnet gneiss					
146.5'	156.5'	Graphitic Gneiss - altered biotite - phlogopite - amphibole gneiss; graphite.					
156.5'	180'	Barren Gneiss - leucocratic biotite - garnet - amphibole gneiss. - variable amphibole content.					
180'	183'	Migmatite - pink, pegmatitic					
183'	233'	Barren Gneiss - leucocratic biotite gneiss with variable garnet and amphibole content.					
233'	246'	Graphitic Gneiss - banded phlogopite - amph gneiss					
246'	268'	Barren Gneiss - leucocratic biotite gneiss.					
		- END OF HOLE -					

U. Schmidt

HARTFORD RESOURCES, INC.
MARIA TWP, ONTARIO
CLAIM EO 608348

Sketch of Diamond Drill Holes Drilled on Claim EO 608348
in Relation to the nearest claim post.
Scale 1:2500

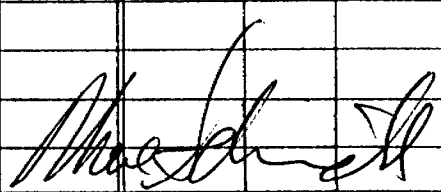


DIAMOND DRILL HOLE NO. 84-4 & 85-4 (extension of 84-4)

Location: L Lat. _____
 Dep. _____
 Elev. at Collar 1000'
 Dip at Collar -90°
 at _____
 at _____
 at _____

Hole - Started 84-4 Dec. 2 to 2, 1984
 Completed 85-4 July 24 to 25, 1985
 Depth 138' + 100' = 238'
 Logged by U. Schmidt
 Remarks BQ Core 1 1/2"
- extension of 84-4 by 100'
in July.

Depth		DESCRIPTION	SAMPLE		ASSAY		
From	To		LENGTH	No.	% -	% -	REMARKS
0	4'	Casing - Overburden					
4'	102'	Graphitic Gneiss - phlogopite - graphite - amphibole qtz - feldspar gneiss, pyritic, trace of garnets.					
102'	106'	Transitional Graphitic Gneiss - graphite - biotite - mauve garnet - sillimanite gneiss					
106'	112'	Lamprophyre dyke.					
112'	143'	Graphitic Gneiss - phlogopite - graphite - quartz - feldspar gneiss, thinly laminated, some migmatite bands. plus amphibole and garnet.					
		* Note 138' end of 84-4 Start of 85-4 extension.					
143	148.5'	Pegmatite - biotite - quartz - feldspar pegmatite.					
148.5'	182'	Graphitic Gneiss - finely banded, graphite - phlogopite - amphibole - quartz - feldspar gneiss					
182'	187'	Barren Gneiss - biotite garnet - quartz feldspar gneiss, minor migmatite					
187'	214'	Graphitic Gneiss - banded phlogopite - graphite - amphibole - quartz - feldspar gneiss					
214'	238'	Barren Gneiss - banded biotite, garnet - quartz - feldspar - gneiss.					
		- END OF HOLE -					

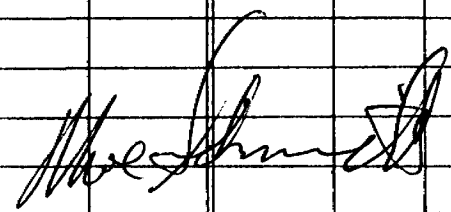


DIAMOND DRILL HOLE NO. 84-5

Location: L Lat. _____
 Dep. _____
 Elev. at Collar 1010'
 Dip at Collar -90°
 at _____
 at _____
 at _____

Hole - Started Dec. 2, 1984
 Completed Dec. 3, 1984
 Depth 138'
 Logged by U. Schmidt
 Remarks BQ core 1 1/2"

Depth		DESCRIPTION	SAMPLE		ASSAY		
From	To		LENGTH	No.	% -	% -	REMARKS
0	4'	Casing - Overburden.					
4'	53'	Graphitic Gneiss - banded, graphite phlogopite-quartz-feldspar gneiss - some intermittent coarse migmatite bands.					
53'	55'	Pegmatite - coarse biotite- quartz-feldspar pegmatite					
55'	129'	Graphitic Gneiss - chloritic-graphitic - pyritic - phlogopite-quartz- feldspar gneiss; - some potassic alteration.					
129'	138'	Transitional Graphitic Gneiss - biotite-garnet-sillimanite- quartz-feldspathic gneiss.					
		- END OF HOLE -					



Sheet No. 1 of 1

DIAMOND DRILL HOLE NO. 84-6

Location: L Lat. _____
 Dep. _____
 Elev. at Collar 1030'
 Dip at Collar -90°
 at _____
 at _____
 at _____

Hole - Started Dec. 3, 1984
 Completed Dec. 4, 1984
 Depth 168'
 Logged by U. Schmidt
 Remarks BD Core 1 1/2"

Depth		DESCRIPTION	SAMPLE		ASSAY		
From	To		LENGTH	No.	% -	% -	REMARKS
0	4'	Casing - Overburden.					
4'	124'	Graphitic Gneiss - chloritic-graphitic - phlogopite - quartz - feldspathic gneiss, accessory garnet					
124'	132'	Pegmatite - biotite - quartz - feldspar pegmatitic gneiss					
132'	158'	Graphitic Gneiss - interbanded graphite - phlogopite - garnet - quartz - feldspar gneiss					
158'	160.5'	biotite - quartz - feldspar Schist					
160.5	166'	Graphitic Gneiss - thinly laminated, phlogopite - quartz feldspar gneiss with graphite					
166'	168'	Barren Gneiss - biotite - garnet - quartz - feldspathic gneiss.					
		- END OF HOLE -					

U. Schmidt

DIAMOND DRILL HOLE NO. 85-15

Location: L Lat. _____
 Dep. _____
 Elev. at Collar 1080'
 Dip at Collar -90°
 at _____
 at _____
 at _____

Hole - Started July 19, 1985
 Completed July 19, 1985
 Depth 168'
 Logged by U. Schmidt
 Remarks 50 Core 1 1/2"

Depth		DESCRIPTION	SAMPLE		ASSAY		
From	To		LENGTH	No.	% -	% -	REMARKS
0	3'	<u>Overburden - casing</u>					
3'	148'	<u>Graphitic Gneiss - banded phlogopite - amphibole - quartzo- feldspathic graphitic gneiss; chloritic alteration in places; some garnet rich bands and some pyrite.</u>					
148'	168'	<u>Transitional Barren Gneiss - banded biotite - garnet - quartzo - feldspathic - " muscovite gneiss; minor pegmatite bands (dykes).</u>					
		<u>- END OF HOLE -</u>					

U. Schmidt

Sheet No. 1 of 1

DIAMOND DRILL HOLE NO. 85-16

Location: L Lat. _____
 Dep. _____
 Elev. at Collar 1060'
 Dip at Collar -90°
 at _____
 at _____
 at _____

Hole - Started July 20, 1985
 Completed July 23, 1985
 Depth 150'
 Logged by U. Schmidt
 Remarks BO Core 1 1/2"

Depth		DESCRIPTION	SAMPLE		ASSAY		
From	To		LENGTH	No.	% -	% -	REMARKS
0	3'	Casing - Overburden					
3'	138'	Graphitic Gneiss - banded to finely banded phlogopite-graphite- amphibole-quartz-feldspathic gneiss with minor garnet and muscovite; some chloritic and potassic alteration.					
138'	142'	Transitional Barren Gneiss -biotite-muscovite-garnet gneiss.					
142'	150'	Barren Gneiss - very siliceous, banded, biotite- muscovite-garnet-quartz- feldspathic gneiss.					
		- END OF HOLE -					

U. Schmidt

DIAMOND DRILL HOLE NO. 85-17

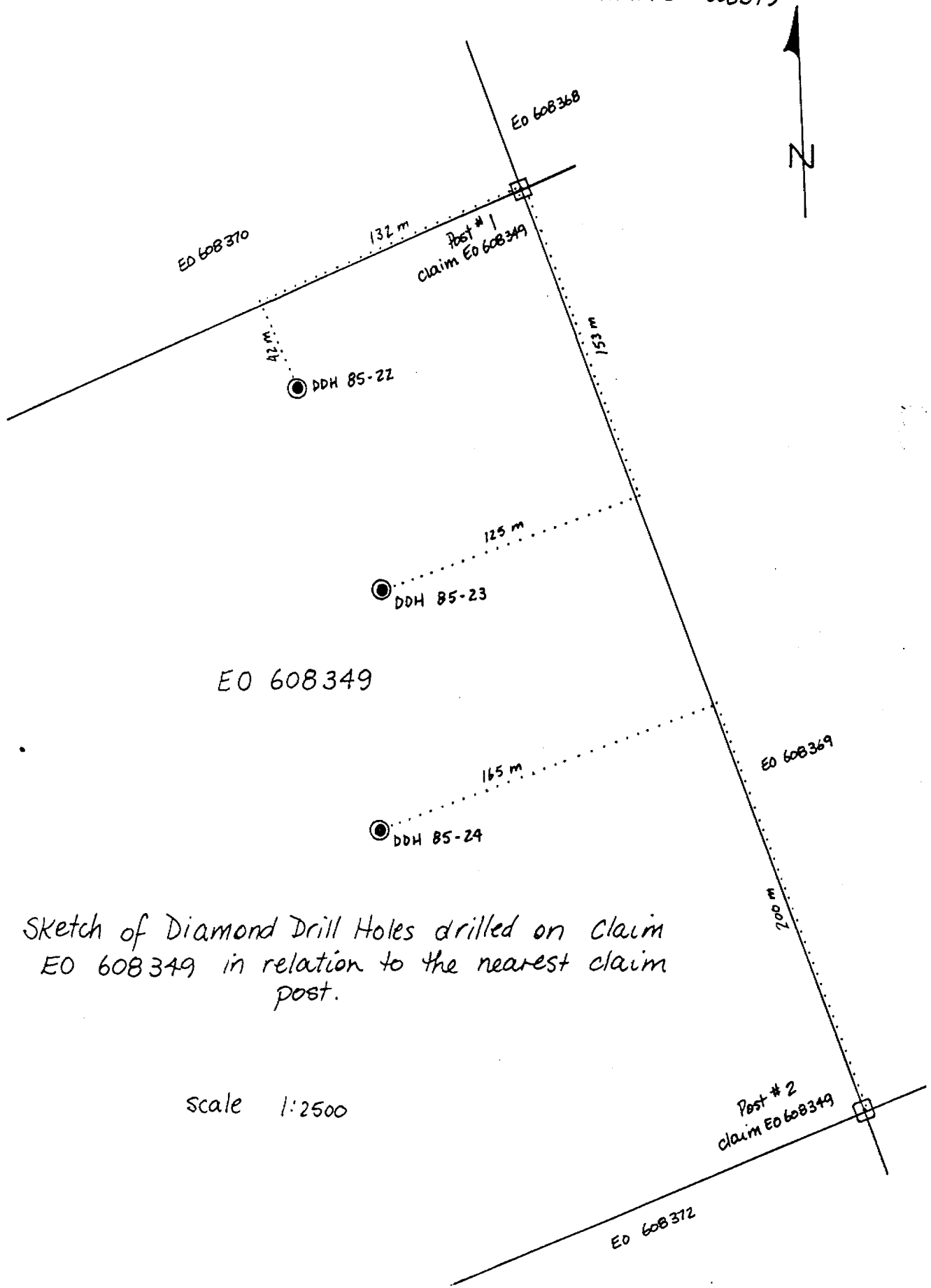
Location: L Lat. _____
 Dep. _____
 Elev. at Collar 1050'
 Dip at Collar -90°
 at _____
 at _____
 at _____

Hole - Started July 24, 1985
 Completed July 24, 1985
 Depth 158'
 Logged by U. Schmidt
 Remarks BQ Core 1 1/2"

Depth		DESCRIPTION	SAMPLE		ASSAY		
From	To		LENGTH	No.	% -	% -	REMARKS
0	3'	Casing - Overburden.					
3'	35.5'	Graphitic Gneiss - banded, graphitic, pyritic, phlogopite-amphibole-quartz-feldspar gneiss					
35.5'	37'	Pegmatite - biotite-quartz Feldspar pegmatite.					
37'	108.5'	Graphitic Gneiss - banded, graphite-phlogopite-amphibole-quartz-feldspar gneiss; minor pegmatite.					
108.5'	115'	Pegmatite - biotite-quartz-feldspar pegmatite.					
115'	146'	Graphitic Gneiss - thinly banded phlogopite-quartz-feldspar-amphibole gneiss; minor garnet; graphite					
146'	151'	Transitional Barren Gneiss - biotite-muscovite-quartz-feldspathic gneiss; low muscovite content.					
151'	158'	Barren Gneiss - biotite-garnet-quartz-feldspar gneiss.					
		- END OF HOLE -					

U. Schmidt

HARTFORD RESOURCES, INC.
MARIA TOWNSHIP, ONTARIO
CLAIM EO 608349



Sketch of Diamond Drill Holes drilled on Claim
EO 608349 in relation to the nearest claim
post.

scale 1:2500

DIAMOND DRILL HOLE NO. 85-22

Location: L Lat. _____
 Dep. _____
 Elev. at Collar 1020'
 Dip at Collar -90°
 at _____
 at _____
 at _____

Hole - Started Aug. 5, 1985
 Completed Aug. 5, 1985
 Depth 158"
 Logged by U. Schmidt
 Remarks BQ Core 1 1/2"

Depth		DESCRIPTION	SAMPLE		ASSAY		
From	To		LENGTH	No.	% -	% -	REMARKS
0	5'	Overburden - casing.					
5'	31'	Graphitic Gneiss - banded phlogopite - amphibole - quartz - feldspar graphitic gneiss, minor garnet.					
31'	39'	Barren Gneiss - banded biotite - garnet gneiss; leucocratic.					
39'	48'	Graphitic Gneiss - fine grained, banded phlogopite - amphibole graphitic gneiss. -siliceous					
48'	63'	Barren Gneiss - leucocratic banded biotite - garnet - quartz - feldspar gneiss.					
63'	152'	Graphitic Gneiss - banded phlogopite - amphibole - garnet - graphitic gneiss.					
152'	157'	Transitional Barren Gneiss -biotite - muscovite - garnet gneiss					
157'	158'	Graphitic Gneiss - phlogopite amphibole graphitic gneiss - END OF HOLE -					

U. Schmidt

Sheet No. 1 of 1

DIAMOND DRILL HOLE NO. 85-23

Location: L Lat. _____
 Dep. _____
 Elev. at Collar 1020'
 Dip at Collar -90°
 at _____
 at _____
 at _____

Hole - Started Aug. 6, 1985
 Completed Aug. 6, 1985
 Depth 138'
 Logged by U. Schmidt
 Remarks BQ Core 1 1/2"

Depth		DESCRIPTION	SAMPLE		ASSAY		
From	To		LENGTH	No.	% -	% -	REMARKS
0	4'	Casing - Overburden					
4'	33'	Graphitic Gneiss - leucocratic phlogopite - amphibole - quartz - feldspar gneiss; minor garnet.					
33'	43'	Barren Gneiss - leucocratic biotite - red garnet - quartz - feldspar gneiss.					
43'	111'	Graphitic Gneiss - banded, graphite - phlogopite - amphibole - quartz - feldspar gneiss; minor garnet; calcareous and siliceous in places.					
111'	122'	Transitional Barren Gneiss - melanocratic biotite - muscovite - quartz - feldspar augen gneiss.					
122'	124'	Graphitic Gneiss - finely banded phlogopite gneiss with graphite.					
124'	127'	Barren Gneiss - leucocratic biotite - garnet - quartz - feldspar gneiss					
127'	138'	Transitional Barren Gneiss - biotite - garnet - muscovite - quartz - feldspar gneiss.					
		- END OF HOLE -					

U. Schmidt

DIAMOND DRILL HOLE NO. 85-24

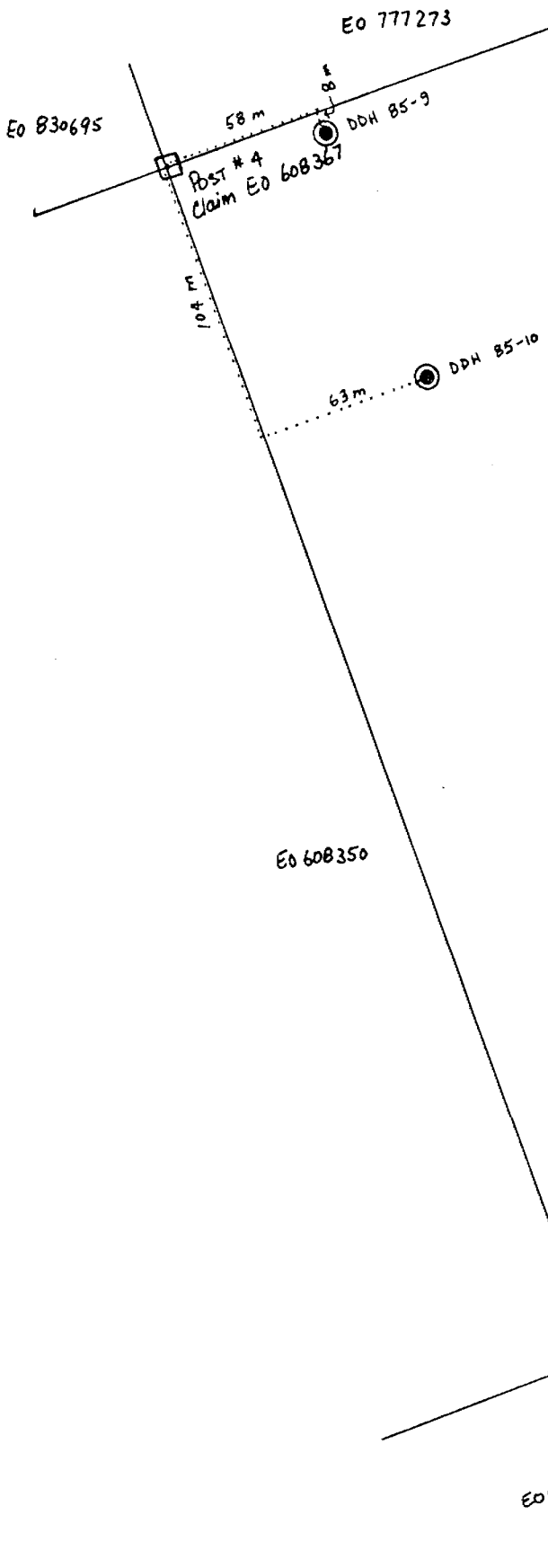
Location: L Lat. _____
 Dep. _____
 Elev. at Collar 980'
 Dip at Collar -90°
 at _____
 at _____
 at _____

Hole - Started Aug. 8, 1985
 Completed Aug. 8, 1985
 Depth 129'
 Logged by U. Schmidt
 Remarks BQ Core 1 1/2"

Depth		DESCRIPTION	SAMPLE		ASSAY		
From	To		LENGTH	No.	% -	% -	REMARKS
0	3'	Casing - Overburden					
3'	43'	Graphitic Gneiss - banded, graphite phlogopite - amphibole - garnet - quartz - feldspar gneiss, graphite					
43'	45'	Pegmatite - migmatitic biotite quartz - feldspar pegmatite					
45'	57'	Barren Gneiss - leucocratic biotite - garnet - quartz - feldspar gneiss					
57'	104'	Graphitic Gneiss - banded phlogopite - amphibole - quartz - feldspar graphitic gneiss.					
104'	106.5'	Transitional Barren Gneiss - melanocratic biotite - muscovite - garnet gneiss					
106.5'	126'	Barren Gneiss - leucocratic, banded biotite - quartz - feldspar gneiss with minor garnet.					
126'	129'	Graphitic Gneiss - Banded phlogopite - amphibole - quartz feldspar graphitic gneiss.					
		- END OF HOLE -					

U. Schmidt

HARTFORD RESOURCES, INC.
MARIA TOWNSHIP, ONTARIO
CLAIM EO 608367



EO 608367

Sketch of Diamond Drill Holes Drilled on
Claim # EO 608367 in relation to the
nearest claim post.

Scale 1:2500

DIAMOND DRILL HOLE NO. 85-9

Location: L Lat. _____
 Dep. _____
 Elev. at Collar 1090'
 Dip at Collar -90"
 at _____
 at _____
 at _____

Hole - Started July 6, 1985
 Completed July 7, 1985
 Depth 123'
 Logged by U. Schmidt
 Remarks BQ Core 1 1/2"

Depth		DESCRIPTION	SAMPLE		ASSAY		
From	To		LENGTH	No.	% -	% -	REMARKS
0	8'	Casing - Overburden					
8	10.5'	Overburden - boulders.					
10.5	108'	Graphitic Gneiss - banded phlogopite-quartz-feldspar graphitic gneiss; chloritic; cut by narrow pegmatite dykes and sills; minor garnet and biotite-phlogopite rich sections; trace muscovite.					
108'	123'	Barren Gneiss - interbanded biotite-garnet-quartz-feldspar gneiss; quartz-feldspar migmatitic bands.					
		- END OF HOLE -					

U. Schmidt

Sheet No. 1 of 1

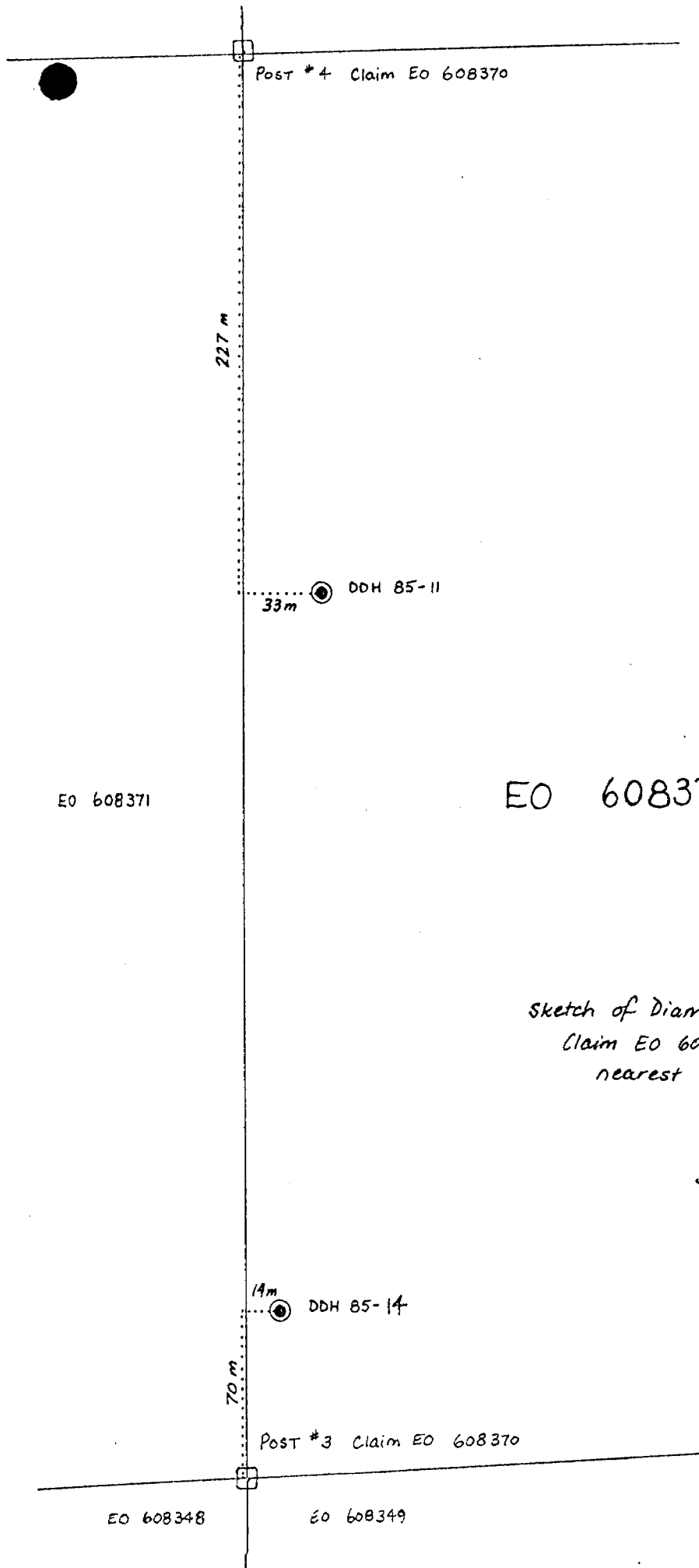
DIAMOND DRILL HOLE NO. 85-10

Location: L Lat. _____
 Dep. _____
 Elev. at Collar 1070'
 Dip at Collar -90°
 at _____
 at _____
 at _____

Hole - Started July 7, 1985
 Completed July 8, 1985
 Depth 122'
 Logged by U. Schmidt
 Remarks BQ Core 1 1/2"

Depth		DESCRIPTION	SAMPLE		ASSAY		
From	To		LENGTH	No.	% -	% -	REMARKS
0	8'	Overburden - Casing.					
8'	94'	Graphitic Gneiss - interbanded phlogopite - chlorite - graphitic - quartzo-feldspathic gneiss - some epidotized amphiboles. - minor occasional pegmatite bands.					
94'	102'	Pegmatite sill - biotite - quartz feldspar pegmatite.					
102'	112.5'	Graphitic Gneiss - finely banded phlogopite - hornblende? - quartzo-feldspathic graphitic gneiss; propylitized amphibole bands.					
112.5'	122'	Barren Gneiss - interbanded biotite - garnet - sillimanite - quartz - feldspar gneiss.					
		- END OF HOLE -					

U. Schmidt



Sketch of Diamond Drill Holes Drilled on
Claim EO 608370 in relation to the
nearest claim post.

SCALE 1:2500

Sheet No. 1 of 1...

DIAMOND DRILL HOLE NO. 85-11

Location: L Lat. _____
 Dep. _____
 Elev. at Collar 1100'
 Dip at Collar -90°
 at _____
 at _____
 at _____

Hole - Started July 8, 1985
 Completed July 10, 1985
 Depth 248'
 Logged by U. Schmidt
 Remarks BQ Core 1 1/2"

Depth		DESCRIPTION	SAMPLE		ASSAY		
From	To		LENGTH	No.	% -	% -	REMARKS
0	8'	<u>Overburden - casing</u>					
8'	171.5'	<u>Graphitic Gneiss - chloritic, pyritic, graphitic, phlogopite-quartz-feldspar gneiss; banded, intermittent biotite-quartz-feldspar pegmatite dykes and sills; minor garnets, trace epidote & muscovite.</u>					
171.5'	175'	<u>Pegmatite - pyritic, chloritic, feldspar-quartz-biotite pegmatite.</u>					
175'	221'	<u>Graphitic Gneiss - chloritic, interbanded phlogopite-garnet-quartz-feldspar graphitic gneiss.</u>					
221'	226.5'	<u>Pegmatite (gradational contacts) feldspar-quartz-biotite-chlorite pegmatite.</u>					
226.5'	248'	<u>Barren Gneiss - biotite-quartz-feldspar gneiss; Some potassic alteration on fractures; minor amphibole concentrations.</u>					
<u>- END OF HOLE -</u>							

U. Schmidt

Sheet No. 1. of 1.

DIAMOND DRILL HOLE NO. 85-14

Location: L Lat. _____
 Dep. _____
 Elev. at Collar 1080'
 Dip at Collar -90°
 at _____
 at _____
 at _____

Hole - Started July 18, 1985
 Completed July 19, 1985
 Depth 198'
 Logged by U. Schmidt
 Remarks BO Core 1 1/2"

Depth		DESCRIPTION	SAMPLE		ASSAY		
From	To		LENGTH	No.	% -	% -	REMARKS
0	14'	<u>Overburden - casing.</u>					
14'	176'	<u>Graphitic Gneiss - phlogopite - amphibole - quartz - feldspar banded graphitic gneiss; some garnet rich bands; minor calcite - pyrite rich bands (veins).</u>					
176'	198'	<u>Transitional Barren Gneiss - biotite - muscovite - quartz - feldspar gneiss; some minor pegmatite bands.</u>					
		<u>- END OF HOLE -</u>					

U. Schmidt

EO 800880

EO 608850

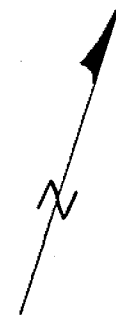
EO 608367

Post #4
Claim EO 608371

Post #1
Claim EO 608371

HARTFORD RESOURCES,
INC
MARIA TWP, ONTARIO
CLAIM EO 608371

EO 608371



SCALE 1:2500

EO 800881

EO 608370

● DDH. 85-12
60 m

● DDH. 85-13
88 m

268 m

168 m

Sketch of Diamond Drill Holes Drilled on
Claim EO 608371 in relation to the
nearest claim post.

Post #3
Claim EO 608371

Post #2
Claim EO 608371

EO 608347

EO 608348

EO 608349

DIAMOND DRILL HOLE NO. 85-12

Location: L Lat. _____
 Dep. _____
 Elev. at Collar 1080'
 Dip at Collar -90°
 at _____
 at _____
 at _____

Hole - Started July 10, 1985
 Completed July 11, 1985
 Depth 168'
 Logged by U. Schmidt
 Remarks BQ core 1 1/2"

Depth		DESCRIPTION	SAMPLE		ASSAY		
From	To		LENGTH	No.	% -	% -	REMARKS
0	5'	Casing - Overburden.					
5	79'	Graphitic Gneiss - interbanded phlogopite-amphibole graphitic gneiss; chlorite and epidote alteration common; pyrite and pyrrhotite throughout. - minor garnet.					
79'	83'	Transitional Barren Gneiss - muscovite - biotite rich quartz-feldspar gneiss.					
83'	168'	Barren Gneiss - coarse grained interbanded biotite quartz-feldspar gneiss - minor garnet; some migmatitic dykes and sills. - minor pegmatitic bands					
		- END OF HOLE -					

U. Schmidt

DIAMOND DRILL HOLE NO. 85-13

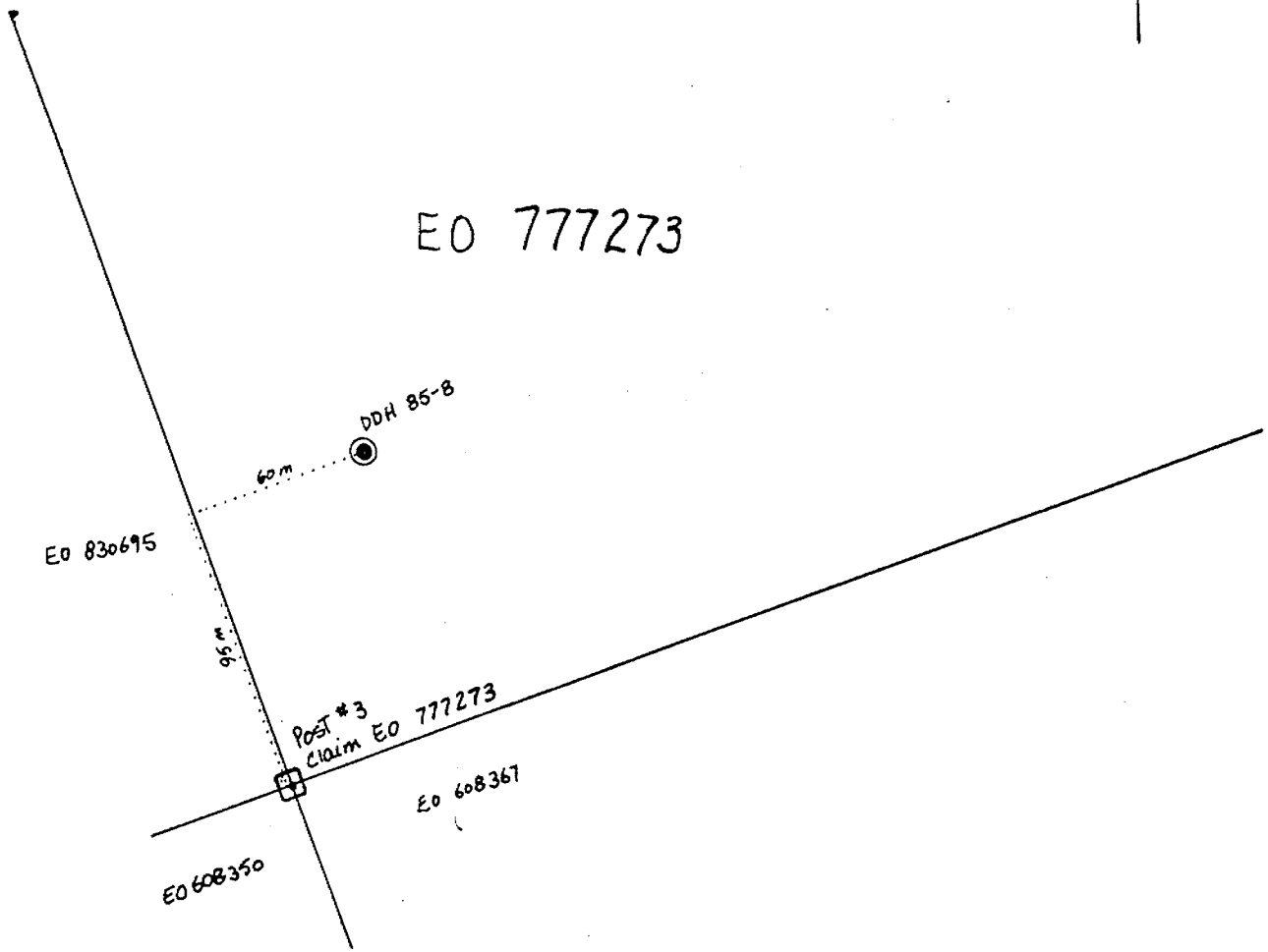
Location: L Lat. _____
 Dep. _____
 Elev. at Collar 1080'
 Dip at Collar -90°
 at _____
 at _____
 at _____

Hole - Started July 17, 1985
 Completed July 17, 1985
 Depth 118'
 Logged by U. Schmidt
 Remarks BQ Core 1 1/2"

Depth		DESCRIPTION	SAMPLE		ASSAY		
From	To		LENGTH	No.	% -	% -	REMARKS
0	3'	Overburden - casing.					
3'	67'	Graphitic Gneiss - interbanded graphitic phlogopite-amphibole quartzo-feldspathic gneiss. - intermittent muscovite - altered amphibole bands.					
67	69.5'	Pegmatite - biotite-quartz- feldspar pegmatite with pyrite and pyrrhotite.					
69.5'	97'	Graphitic Gneiss - banded phlogopite-amphibole-quartz feldspar graphitic gneiss; altered amphiboles. (lower contact gradational)					
97'	109'	Transitional Barren Gneiss banded muscovite - biotite quartz-feldspar gneiss.					
109	118	Barren Gneiss - banded biotite-muscovite-quartz- feldspar gneiss; minor garnets & migmatitic bands - END OF HOLE -					

U. Schmidt

HARTFORD RESOURCES, INC.
MARIA TOWNSHIP, ONTARIO
CLAIM EO 777273



Sketch of Diamond Drill Holes drilled on
Claim # EO 777273 in relation to the nearest
claim post.

Scale 1:2500

DIAMOND DRILL HOLE NO. 85-8

Location: L Lat. _____
 Dep. _____
 Elev. at Collar 1120'
 Dip at Collar -90°
 at _____
 at _____
 at _____

Hole - Started July 5, 1985
 Completed July 6, 1985
 Depth 123'
 Logged by U. Schmidt
 Remarks BQ Core 1 1/2"

Depth		DESCRIPTION	SAMPLE		ASSAY		
From	To		LENGTH	No.	% -	% -	REMARKS
0	4'	Overburden - casing.					
4'	6'	Pegmatite - quartz - feldspar pegmatite					
6'	20.5'	Graphitic Gneiss - banded medium grained, pyritic graphitic, quartz - feldspar gneiss					
20.5'	32.5'	Pegmatite - feldspar - quartz - biotite pegmatite					
32.5'	64.5'	Graphitic Gneiss - banded phlogopite - garnet - graphitic and pyritic gneiss					
64.5'	68.5'	Pegmatite - biotite - quartz - feldspar pegmatite with inclusions of graphitic gneiss					
68.5'	78'	Graphitic Gneiss - banded graphitic phlogopite gneiss.					
78'	80'	Barren Gneiss - biotite quartz - feldspar gneiss.					
80'	100'	Pegmatite - biotite - quartz - feldspar pegmatite with intermittent pyritic and chloritic horizons.					

DIAMOND DRILL HOLE NO. 85-8

Location: L Lat. _____
 Dep. _____
 Elev. at Collar 1120'
 Dip at Collar -90°
 at _____
 at _____
 at _____

Hole - Started July 5/85
 Completed July 6/85
 Depth 123'
 Logged by U. Schmidt
 Remarks BQ Core 1 1/2"

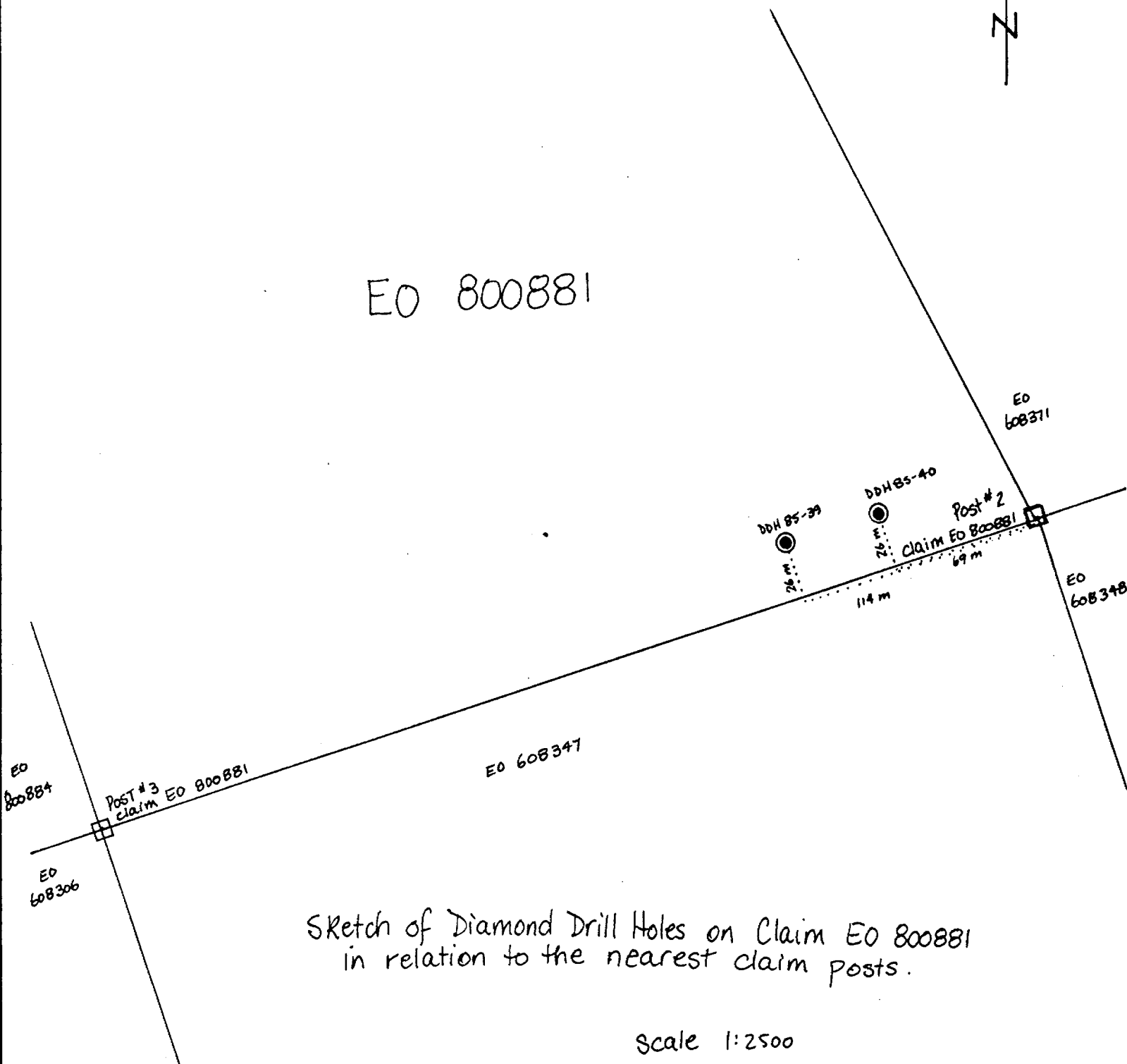
Depth		DESCRIPTION	SAMPLE		ASSAY		
From	To		LENGTH	No.	% -	% -	REMARKS
100'	123'	Graphitic Gneiss - medium grained phlogopite - quartz - feldspar graphitic gneiss; chloritic; minor pegmatite (biotite - quartz - feldspar pegmatite) at 113'; chloritized.					
		- END OF HOLE -					

U. Schmidt

HARTFORD RESOURCES, INC.
MARIA TOWNSHIP, ONTARIO
CLAIM EO 800881



EO 800881



Sketch of Diamond Drill Holes on Claim EO 800881
in relation to the nearest claim posts.

Scale 1:2500

Sheet No. 1 of 1

DIAMOND DRILL HOLE NO. 85-39

Location: L Lat. _____
 Dep. _____
 Elev. at Collar 1090'
 Dip at Collar -90°
 at _____
 at _____
 at _____

Hole - Started Sept. 16, 1985
 Completed Sept. 18, 1985
 Depth 238'
 Logged by U. Schmidt
 Remarks BD core 1 1/2"

Depth		DESCRIPTION	SAMPLE		ASSAY		
From	To		LENGTH	No.	% -	% -	REMARKS
0	4'	Casing - Overburden.					
4'	86'	Graphitic Gneiss - banded phlogopite amphibole ± garnet gneiss; graphite					
86'	93'	Transitional Graphitic Gneiss - banded biotite-muscovite-garnet gneiss ± amphibole (variable)					
93'	104'	Barren Gneiss - leucocratic biotite-garnet gneiss + minor muscovite and amphibole.					
104'	120'	Graphitic Gneiss - banded, graphite phlogopite-amphibole gneiss					
120'	145.5'	Barren Gneiss - leucocratic biotite garnet gneiss, variable amphibole content.					
145.5'	152'	Graphitic Gneiss - phlogopite amphibole gneiss; graphite					
152'	154'	quartz-feldspar-pyrite Migmatite					
154'	193'	Barren Gneiss - biotite-garnet gneiss - minor muscovite.					
193'	206'	Graphitic Gneiss - banded, graphite-phlogopite-amphibole gneiss					
206'	209'	Pegmatite					
209'	211'	Migmatite					
211'	238'	Barren Gneiss - biotite garnet gneiss					
		- END OF HOLE -					

U. Schmidt

Sheet No. 1 of 1

DIAMOND DRILL HOLE NO. 85-40

Location: L Lat. _____
 Dep. _____
 Elev. at Collar 1040'
 Dip at Collar -90°
 at _____
 at _____
 at _____

Hole - Started Sept. 19, 1985
 Completed Sept. 26, 1985
 Depth 258'
 Logged by U. Schmidt
 Remarks BQ Core 1 1/2"

Depth		DESCRIPTION	SAMPLE		ASSAY		
From	To		LENGTH	No.	% -	% -	REMARKS
0	36'	Casing - Overburden					
36'	90'	Graphitic Gneiss - banded, graphitic, siliceous phlogopite-amphibole gneiss					
90'	96.5'	Barren Gneiss - biotite garnet gneiss					
96.5'	100.5'	pink Pegmatite					
100.5'	129'	Barren Gneiss - leucocratic biotite garnet gneiss, minor amphibole bands.					
129'	139.5'	Graphitic Gneiss - banded phlogopite amphibole gneiss; graphite					
139.5'	157.5'	Barren Gneiss - banded biotite garnet gneiss with some amphibole bands					
157.5'	168'	Graphitic Gneiss - banded phlogopite-amphibole gneiss, siliceous; graphite					
168'	217'	Barren Gneiss - leucocratic biotite-garnet gneiss.					
217'	222'	Pegmatite - pink K-feldspar, biotite quartz - pyrite pegmatite.					
222'	235'	Graphitic Gneiss - banded phlogopite amphibole gneiss.; graphite					
235'	258'	Barren Gneiss - banded biotite amphibole-quartz feldspathic gneiss					
		- END OF HOLE -					

U. Schmidt



Report # 85-66 (49)
of Work

(MARIA Twp H 1910)
Mini



31L01NE0006 11 MARIA

900

Name and Postal Address of Recorded Holder: **HARTFORD RESOURCES, INC.**
 1450-625 HOWE ST, VANCOUVER, B.C. V6C 2T6

Prospector's Licence No.: **T 1868**

Summary of Work Performance and Distribution of Credits

Total Work Days Cr. claimed 7260	Mining Claim			Mining Claim			Mining Claim		
	Prefix	Number	Work Days Cr.	Prefix	Number	Work Days Cr.	Prefix	Number	Work Days Cr.
for Performance of the following work. (Check one only)	SEE ATTACHED SCHEDULE 'A'								
<input type="checkbox"/> Manual Work	WORK ASSIGNMENT								
<input type="checkbox"/> Shaft Sinking Drifting or other Lateral Work.	EO 608346		1,000-63			3937 days balance			
<input type="checkbox"/> Compressed Air, other Power driven or mechanical equip.	EO 608347		4,000-3,956			44			
<input type="checkbox"/> Power Stripping	EO 608348		4,000-920			3080			
<input checked="" type="checkbox"/> Diamond or other Core drilling	EO 608349		4,000-325			3675			
<input type="checkbox"/> Land Survey	EO 608367		4,000-145			3865			
	EO 608370		4,000-346			3654			
	EO 608371		4,000-186			3814			
	EO 777273								
	EO 800881		4,000-296			3704			

All the work was performed on Mining Claim(s) EO 608346 (163 d.); EO 608347 (4056 d.); EO 608348 (1020 d.); EO 608349 (425 d.); EO 608367 (245 d.); EO 608370 (446 d.); EO 608371 (286 d.); EO 777273 (123 d.); EO 800881 (496 d.)

Required Information eg: type of equipment, Names, Addresses, etc. (See Table Below)

Diamond Drill JK 300 owned by: Triangle Drilling Co., Ltd. 106 Fielding Rd., R.R. #2, BQ Core 1 1/2" diameter Lively, Ontario POM 2E0

Drilling from: Nov. 30 to Dec. 4, 1984 (DDH's 84-2 to 7) and July 5 - Sept. 26, 1985 (DDH's 85-8 to 85-35, 85-37, 85-39 to 40, 85-4 & 85-7 (extensions of 84-4 and 84-7))

Drill Operated by: Anicet Martel; 3071 Paul St., Val Caron Ontario POM 2A0 (DDH's 84-2 to 7)
 Rejean Fleury; 38 Lawrence St., Chelmsford, Ontario POM 1L0 (DDH's 85-8 to 40)
 Alain Denis; 136 Erington, Chelmsford, Ontario POM 1L0 (DDH 85-40)

37 Holes drilled on 37 claims totalling 7293 feet. ✓
 Claiming 7260 total work days credit.

OCT 30 1985

Date of Report: Oct. 27, 1985
 Recorded Holder or Agent (Signature): Tomi M. Borschneck

Certification Verifying Report of Work

I hereby certify that I have a personal and intimate knowledge of the facts set forth in the Report of Work annexed hereto, having performed the work or witnessed same during and/or after its completion and the annexed report is true.

Name and Postal Address of Person Certifying: **UWE SCHMIDT, 656 FORESTHILL, PORT MOODY, B.C. V3H 3A1**

Date Certified: Oct. 27, 1985
 Certified by (Signature): [Signature]

Table of Information/Attachments Required by the Mining Recorder

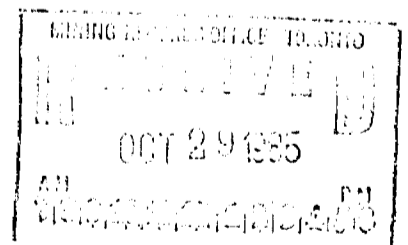
Type of Work	Specific information per type	Other information (Common to 2 or more types)	Attachments
Manual Work	Nil	Names and addresses of men who performed manual work/operated equipment, together with dates and hours of employment.	Work Sketch: these are required to show the location and extent of work in relation to the nearest claim post.
Shaft Sinking, Drifting or other Lateral Work			
Compressed air, other power driven or mechanical equip.	Type of equipment	Names and addresses of owner or operator together with dates when drilling/stripping done.	Work Sketch (as above) in duplicate
Power Stripping	Type of equipment and amount expended. Note: Proof of actual cost must be submitted within 30 days of recording.		
Diamond or other core drilling	Signed core log showing; footage, diameter of core, number and angles of holes.		
Land Survey	Name and address of Ontario land surveyor.	Nil	Nil

SCHEDULE 'A'

DISTRIBUTION OF CREDITS

PREFIX	MINING CLAIM NUMBER	WORK DAYS CREDIT
EO	608302	100
EO	608303	100
EO	608304	100
EO	608305	100
EO	608306	100
EO	608346	100
EO	608347	100
EO	608348	100
EO	608349	100
EO	608350	100
EO	608361	100
EO	608362	100
EO	608363	100
EO	608364	100
EO	608365	100
EO	608366	100
EO	608367	100
EO	608368	100
EO	608369	100
EO	608370	100
EO	608371	100
EO	608372	100
EO	608373	100
EO	608374	100
EO	608376	60
EO	777267	200
EO	777268	200
EO	777269	200
EO	777270	200

Oct. 27, 1985 *Alvin Schmidt*

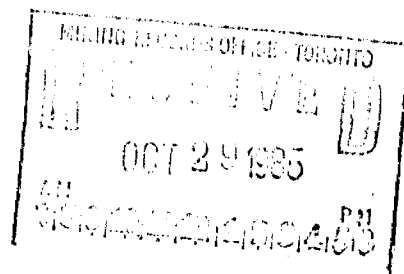


SCHEDULE 'A' CONT'D.
DISTRIBUTION OF CREDITS

PREFIX	MINING CLAIM NUMBER	WORK DAYS CREDIT
EO	777271	200
EO	777272	200
EO	777273	200
EO	777274	200
EO	800880	200
EO	800881	200
EO	800884	200
EO	800885	200
EO	800886	200
EO	800887	200
EO	800888	200
EO	800889	200
EO	830694	200
EO	830695	200
EO	830696	200
EO	830697	200
EO	830698	200
EO	830699	200
EO	830700	200
EO	830701	200

Oct. 27, 1985

M. Schab



MARIA Twp M-1910

M.T.C.
GRAVEL
PIT NO.
5A-24

VIII

Big
Bissett
Lake

EO EO EO

Piglet

EO EO EO EO EO

800885 800886 800887

EO EO EO EO EO

830696 830697 830698 800888

EO EO EO EO

830694 777274 777271 777270 800889

EO EO EO EO EO

830695 777273 777272 777269 830699

EO EO EO EO EO

800880 608350 608352 608356 777268 830700

EO EO EO EO EO EO

800884 800881 608371 608370 608368 777267 830701

EO EO EO EO EO EO

608305 608306 608347 608348 608349 608369

EO EO EO EO EO

608361 608362 608304 608346 608374 608373 608372

EO EO

608364 608365 608303 608302

Cranberry

26

Little
L.

Tigger

FitzGerald Twp.

VII

VI

V

IV

34 33 32 31 30 29 28 27 26 25 24 23 22 21 20 19 18 17



78°04'

Concession
VII

46°08'

VI

V

IV

III

Christopher
Robin
Lake

Blimkie
Lake

Mag
Lake

Bush Road

Creek

Bush Road

Scale: 1:25 000
0 500 1000 m

PRINCETON RESOURCES CORPORATION			
BISSET CREEK PROPERTY		MARIA TWP., ONTARIO	
CLAIM MAP			
SCALE	DATE	NTS.	FIG. N ^o
1:25,000		31L / IE	

