



3105NW0003 0010 PEDLEY

010

Magnetometer and Geiger Survey

EAST BAY GOLD LIMITED

Pedley and Springer Townships

North Bay

by

L.S. Trenholme, M.Sc.

July 14th, 1953.

63.377

L.S. Trenholme, M.Sc..

Report on

EAST BAY GOLD LIMITED

Pedley & Springer Townships

North Bay

July 14th, 1953.

Magnetometer Survey.

The instrument used was a Sharpe Model A, Schmidt Type, Magnetometer (No. 104). It was calibrated to read 15.1 gammas per scale division.

Readings, when converted to gammas, and with appropriate corrections for diurnal variation and strength of auxiliary magnets, represent relative strength of the vertical component of the earth's magnetic field. Readings were taken at 100 foot intervals along north-south picket lines spaced 200 feet apart.

Geiger Survey.

The instrument used was a Model 107 Geiger Counter made by the Precision Radiation Instruments Inc., Los Angeles. It was adjusted in the field so that the standardized specimen marked "2" was held flat against the face of the Geiger tube and registered 0.2 milli-roentgens per hour with the range switch set at XI, the most sensitive.

Method.

With instrument set on the most sensitive range, using the ear phones, the counts per minute were recorded at each station, i.e. every 100 feet along the north-south picket lines.

RESULT of the SURVEYS

A. Pedley Township Group

Magnetometer Results

All readings are shown on the accompanying map on which contour lines join points of equal magnetic intensity. The map area is one of rather low magnetic relief, the difference between the highest and lowest readings being about 700 gammas. A small anomaly area on the north boundary extends south-easterly into the property for about 300 feet.

The main anomalous area covers the southern third of the property. Here a band of moderate intensity about 500 feet wide crosses the surveyed area from east to west. South of this is a magnetic "valley" with symmetrical walls striking southeast and southwest.

Magnetic Interpretation

- 1) The broad plateau of low magnetic values in the north half of the map sheet probably is underlain by granite which outcrops near the extreme northeast corner of the property.
- 2) The small anomaly on the north boundary may be a dike or inclusion of country rock in the granite.
- 3) The magnetic "valley" in the southern part probably represents folded sedimentary strata. Since the contour to the north of the nose of the indicated fold runs generally east-west, this deformation may be caused by the intrusion of a granite mass lying mainly to the south. The values over this assumed granite are comparable to those near the known granite near the northeast corner.

The main anomaly area (about $\frac{1}{2}$ mile north of the south boundary) may represent basic gneissic bands containing hematite and disseminated magnetite since a few outcrops were seen which showed occasional clusters of fine hematite.

In view of the scarcity of rock exposure in the general area and the depth of overburden being generally unknown the foregoing interpretation must be considered as being very tentative.

Geiger Survey Results and Interpretation

The normal background count was between 40 and 50 per minute. The highest counts of 2 (twice background) were obtained near the northeast corner where drift cover over the granite is believed to be shallow. The count dropped rapidly as depth of overburden increased. However, four separate counts of approximately $1\frac{1}{2}$ background were obtained over the main anomaly area where overburden is believed to be fairly deep. Unless these counts were caused by granite boulders (which seems unlikely) they may be of some significance.

Conclusions

The results of the survey are not sufficiently impressive to warrant recommendations for diamond drilling. However, further developments in the Nipissing District, leading to increased knowledge of general geology and ore-structure, may indicate that such results are of interest.

The maps and interpretation may be useful if further assessment work is considered advisable.

B. Springer Township Group.

Magnetometer Results

The average magnetic value is about 300 gammas lower than for the Pedley Group and the maximum magnetic relief is about 300 gammas compared with 700 gammas for the latter.

A small anomalous area of no apparent significance occurs in the northeast corner of the property in a known granite area.

The only other magnetic anomaly is on the shore of Lake Nipissing and probably represents a slight concentration of iron bearing minerals in underlying sandbars.

Geiger Survey Results.

Three irregular areas of approximately twice background count are outlined in red on the map. They occur in partially flooded alder swamps where the overburden is of unknown depth. Except for the most southerly, they are unrelated to magnetic irregularities.

A knowledge of the depth of overburden would be essential to assessing their importance. Along the north boundary the bedrock surface is known to be very flat with a shallow soil covering. If this condition persists southward with some increase in depth of soil cover, the anomalies are more likely due to radioactive minerals in fracture zones in the granite, and less likely due to accumulations of weakly radioactive boulders. The fact that they occur in groups rather than scattered readings lends some weight to this assumption.

Conclusions

- 1) Sounding to determine trenching possibilities may be feasible in parts of the geiger anomaly areas.
- 2) Further prospecting east and west of the map area may locate exposures of radioactive zones traceable onto the East Bay Property.
- 3) Completion of the survey on the remaining four claims of the group appears justified.

Noranda, Quebec.

L. S. Trenholme

L.S. Trenholme,
Geologist.



31L05NW0003 0010 PEDLEY

020

EAST BAY GOLD LIMITED

Assessment Work

Springer and Pedley Twp.

July 17th, 1953.

Magnetometer and Geiger Survey

Work supervised by A. C. Lee, P. Eng. and L. S. Trenholme, M. Sc. the purpose being to prospect these two claim groups for radio-activity and to use the magnetometer results as a guide to interpreting the rock structure in the areas covered by overburden.

The results of these surveys are given in the accompanying report by L. S. Trenholme, M. Sc.

The field work was started on March 10th and continued to April 2nd, 1953 when it was suspended over the break-up period being resumed May 29th and finished June 14th.

The magnetometer and geiger counter are described in the report.

The following are the details of the work performed:-

SPRINGER TOWNSHIP

Claims - 864480, 864481, 2 claims.

Miles of line cut - 4 $\frac{1}{2}$

- a) Men employed - R. Deschaletets - Sturgeon Falls. March 10 to 22 incl. - 10 days
- Chaining by - E. Thompson, Omer Braseau and Don Braseau March 17 to 22 2 days
- b) Magnetometer Operator - A. Thompson E. Thompson 2 days



c) Consultants	1) A. C. Lee employing A. Thompson	1 day
	1) L. S. Trenholme	1 day

d) Draftsman	- O. Croft.	<u>7 days</u>
--------------	-------------	---------------

Magnetometer work Credit ~~4x20 days~~ - 80 days

Geiger Counter - Operator E. Thompson

Magnetometer Work Credit ~~4x20 days~~ - 80 days

Distribution over 2 claims, 40 days per claim.

PEDLEY TOWNSHIP

Claim Nos. 364407 to -14 inclusive -8 claims.

Miles of line cut - 15(including concession lines)

a) Men employed	- D. Faubert, Yvon Vincent, S. Gauthier, R. Vincent, V. Jodouin, V. Brasseur, S. Menard, R. Arcan, March 10 to April 2nd, 1953.	40 days
-----------------	--	---------

Chaining	- E. Thompson, Omer Brasseur, Don Brasseur	16 days
----------	--	---------

b) Magnetometer Operator	- A. Thompson E. Thompson	10 days
--------------------------	------------------------------	---------

c) Consultant	1) A. C. Lee employing A. Thompson	2 days
	1) L. S. Trenholme	4 days

d) Draftsman	O. Croft	<u>8 days</u> 80 days
--------------	----------	--------------------------

Magnetometer Work Credit ~~4x80 days~~ - 320 days

Magnetometer Work Credit ~~4x80 days~~ - 320 days

Distribution over 8 claims, 40 days per claim.

A. C. Lee



Lot 1 Lot 6 Lot 5 Lot 4 Lot 3 Lot 2 Lot 1

6

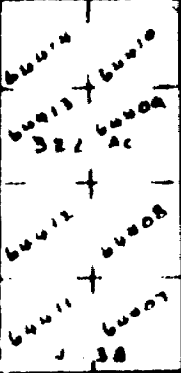
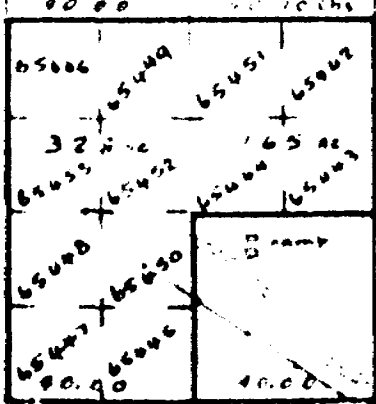
5

4

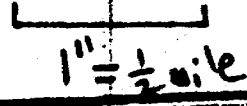
3

2

1



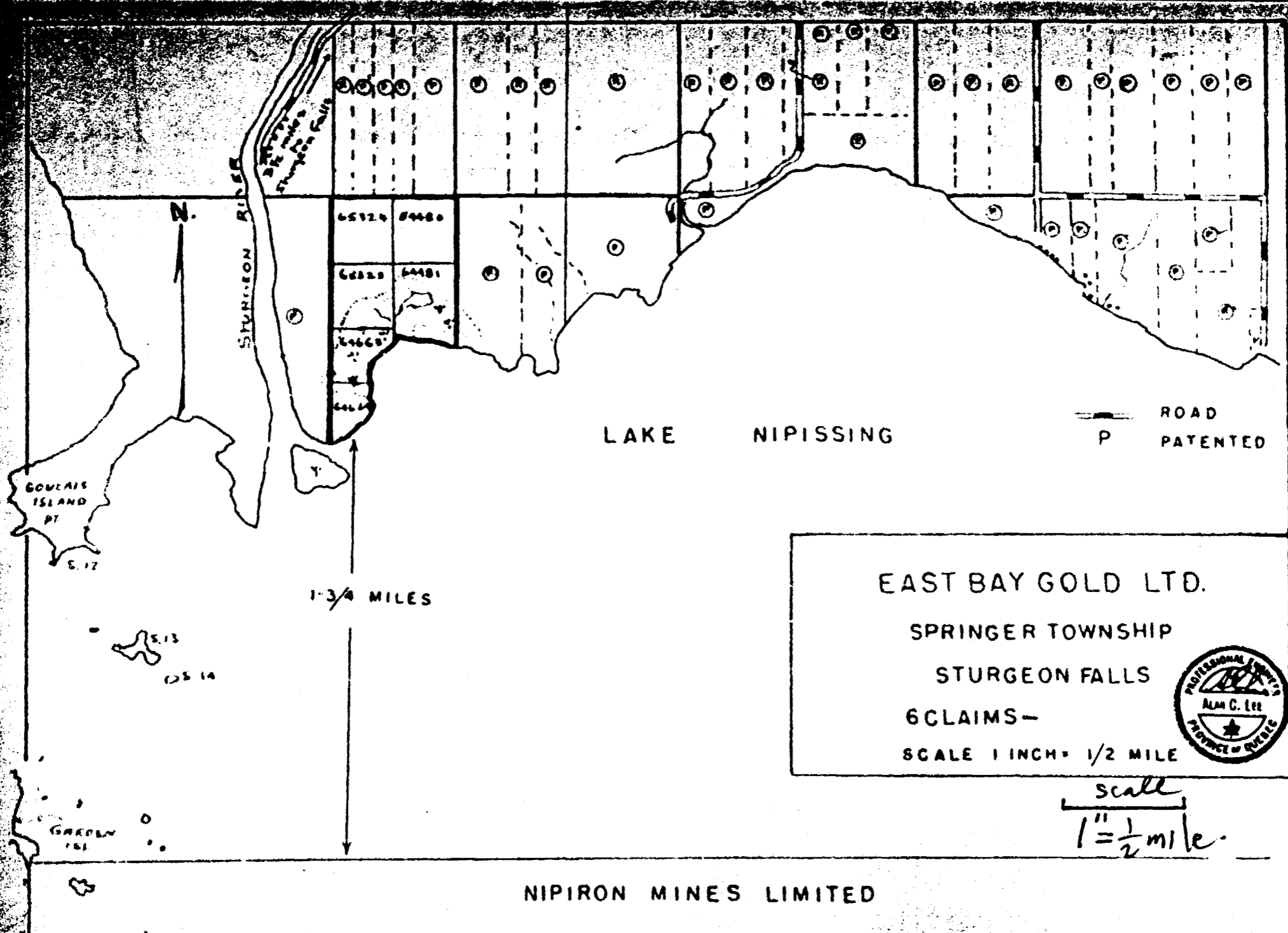
EAST BAY GOLD LTD
 PEDLEY TOWNSHIP
 NORTH BAY.
 20 CLAIMS - 815 ACRES
 SCALE - 1 INCH = 1/2 MILE



C.N.R.
 TO SUDBURY

TO SUDBURY 62 MILES NORTH BAY - 15 MILES
 INDIAN RESERVE

C.P. RY.



GOULAIS ISLAND PT

E. 12

E. 13

E. 14

GREENW 161

STURGEON RIVER

N.

1-3/4 MILES

65124 64480

66228 64481

64668

64444

LAKE NIPISSING

ROAD PATENTED
P

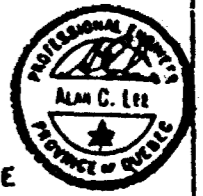
EAST BAY GOLD LTD.

SPRINGER TOWNSHIP

STURGEON FALLS

6 CLAIMS—

SCALE 1 INCH = 1/2 MILE



scale
1" = 1/2 mile.

NIPIRON MINES LIMITED

GRANT TWP

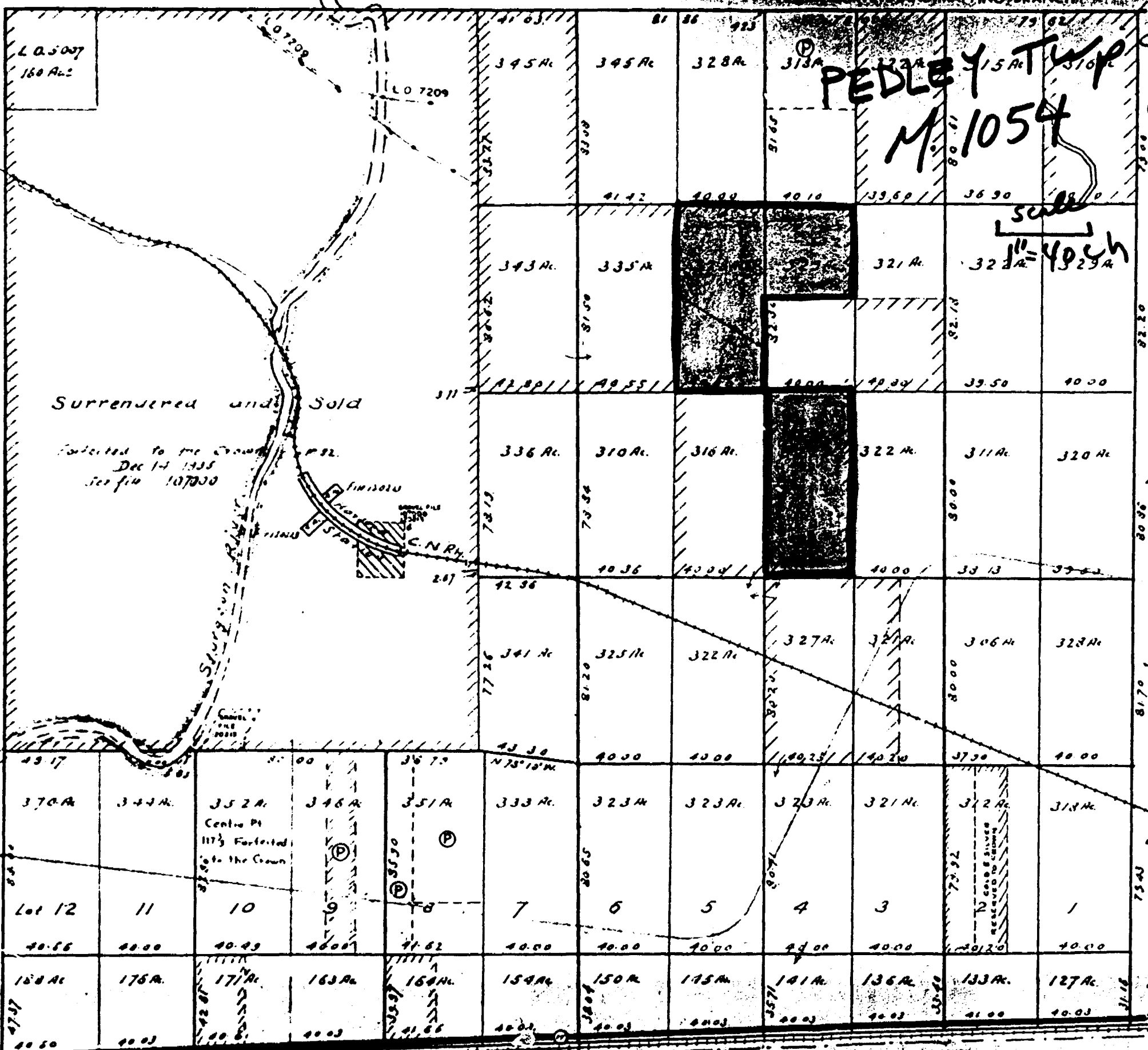
MINISTRY OF NATURAL RESOURCES
SURVEY AND MAPPING BRANCH



SPRINGER TWP

BEAUCAGE TWP

PEDLEY TWP
M. 1054



L.O. 5007
160 Ac.

L.O. 7209

Surrendered and Sold

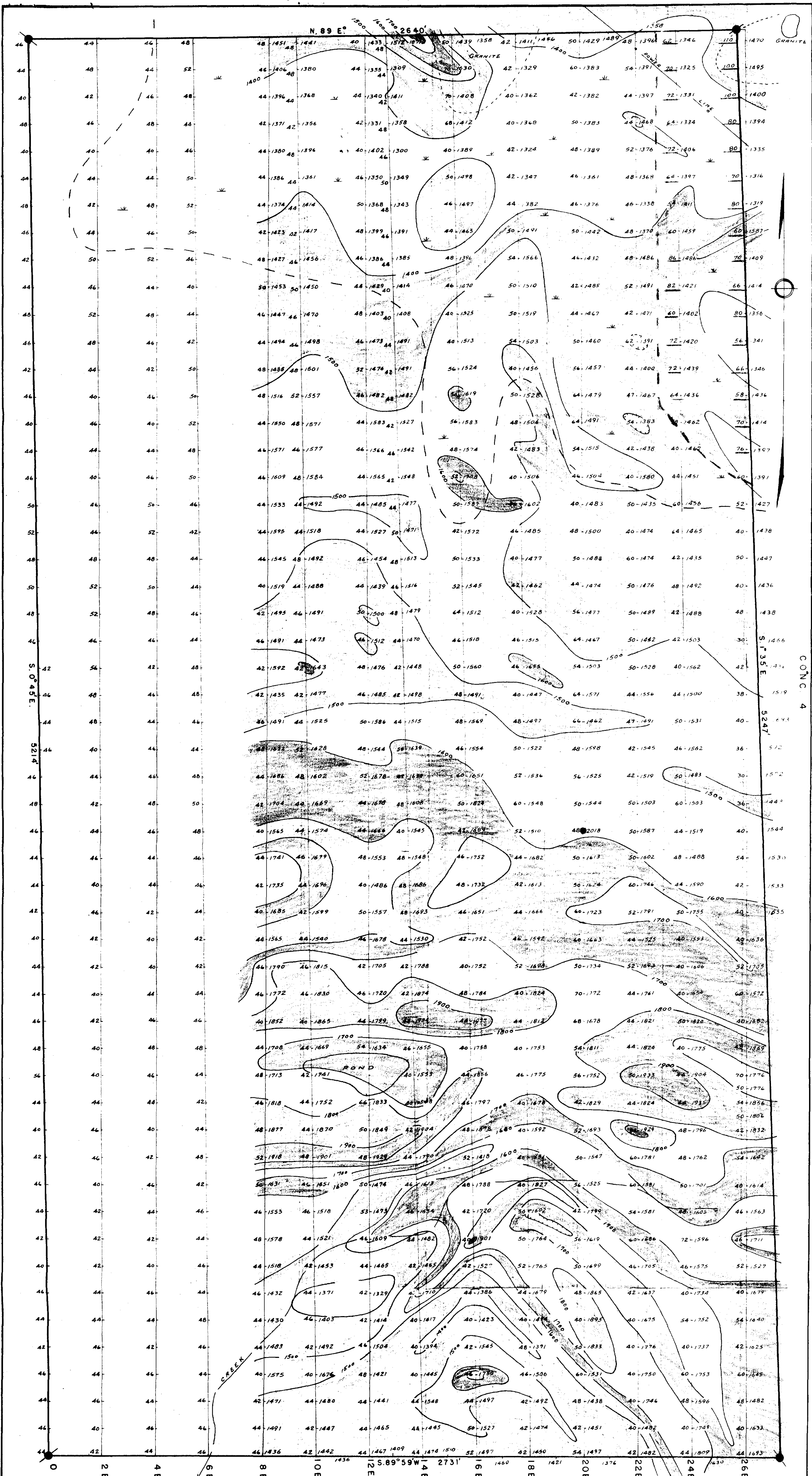
Forfeited to the Crown
Dec 14 1935
See file 10700

Prop. and
regional
drape line

Centre Pt
117 1/2 Forfeited
to the Crown

RECORDED
REGISTERED

INDIAN RESERVE



LOT 4

- 1900+
- 1800-1900
- 1700-1800
- 1600-1700
- 1500-1600
- 1400-1500

- GEIGER COUNTS - NORMAL BACKGROUND 44
- RELATIVE VALUE OF VERTICAL INTENSITY IN GAMMAS
- LOT POSTS LOCATED
- LOT POST LOCATION PLOTTED FROM SURVEY PLAN

EAST BAY GOLD MINES LTD.

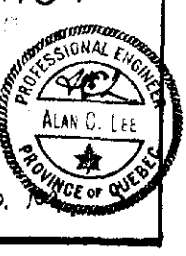
MAGNETOMETER SURVEY

PEDLEY TOWNSHIP NIPISSING DISTRICT

ONTARIO

SCALE 1" = 200'

PEDLEY-0010 #1 63-377



LOT 7

12 W 10 W 8 W 6 W 4 W 2 W 0

65324

64480

65323

64481

64663

64664

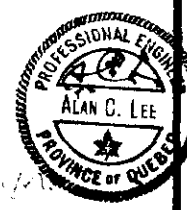
L A K E N I P I S S I N G

- 44 GEIGER COUNTS - NORMAL BACKGROUND 44
- 1234 RELATIVE VALUE OF VERTICAL INTENSITY IN GAMMAS
- CLAIM POSTS LOCATED
- CLAIM POSTS ASSUMED

EAST BAY GOLD MINES LTD.

MAGNETOMETER SURVEY
SPRINGER TOWNSHIP NIPISSING DISTRICT
ONTARIO

SCALE 1"=200'



PEDLEY - 0010 #2



31L85N0883 0010 PEDLEY

Lot 1 Lot 6 Lot 3 Lot 4 Lot 3 Lot 2 Lot 1

6.

Con 5.

N

82.20 CHS

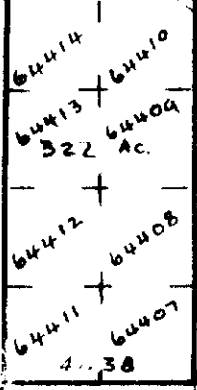
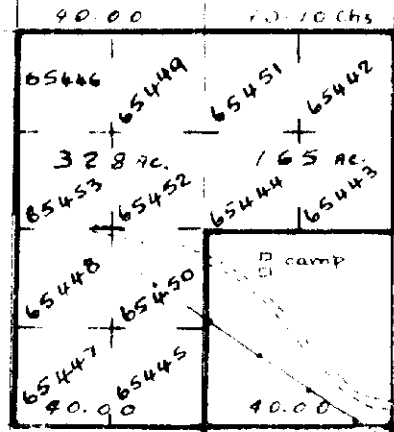
4.

80.85

3.

2.

1/2 Highway



Hydro Line

5.41 miles TO BRUCAGE MINES

7.5 miles TO NIPITON

C.N.R. TO SUDBURY

EAST BAY GOLD LTD.

PEDLEY TOWNSHIP.

NORTH BAY.

20 CLAIMS - 815 ACRES

SCALE - 1 INCH = 1/2 MILE

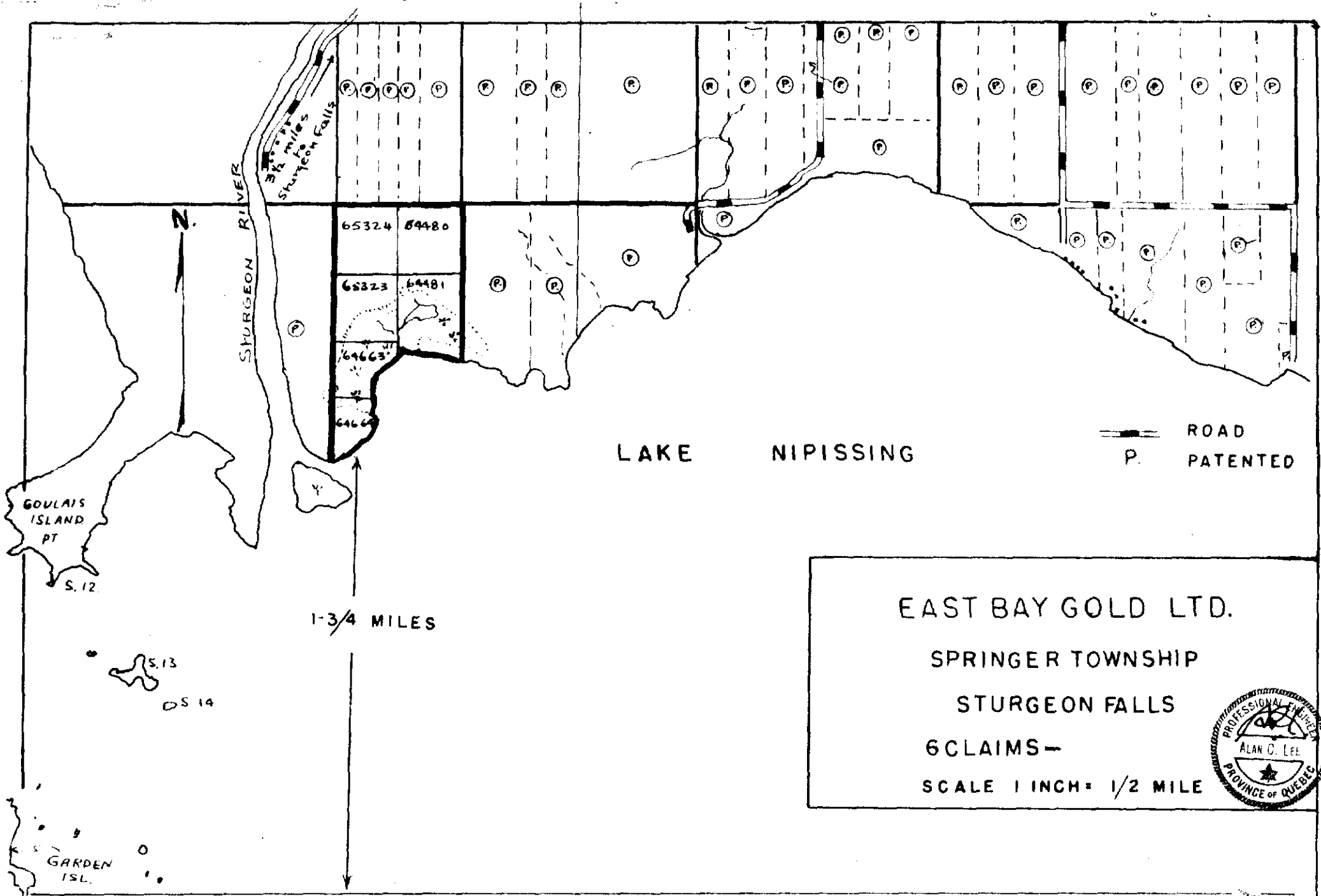


TO SUDBURY 62 MILES NORTH BAY - 15 MILES INDIAN RESERVE

C.P. RY

80.5

78.5

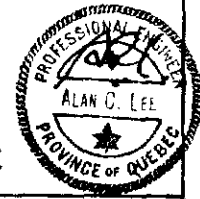


65324 64480
 65323 64481
 64663
 64662

LAKE NIPISSING

ROAD
 P. PATENTED

EAST BAY GOLD LTD.
 SPRINGER TOWNSHIP
 STURGEON FALLS
 6 CLAIMS—
 SCALE 1 INCH = 1/2 MILE



NIPIRON MINES LIMITED