



BESIDES MYSELF HERE IS A SMALL LIST OF THE PEOPLE WHO HELPED ME PERFORM THE PROSPECTING AND SAMPLING OF THIS CLAIM.

	<u>DAY'S</u>
TRACY ROY (MYSELF)	39
BOB ROBSON	8
AMANDA DESCHENE <i>Amanda Deschene</i>	2
MIKE M'ILLON	1
MELISSA FENN <i>Melissa Fenn</i>	5
KYLE ROBSON	1
KELLY ROY	1
HERBERT ROY	2
	<u>69</u>

NONE OF THESE HELPER'S HAVE PROSPECTOR'S LICENCES.

SAMPLES WERE TAKEN FROM ALL OUTCROPS THAT CONTAINED GARNET'S SOME LOOKED AT BY

2.23119

**RECEIVED**

JUN 26 2002

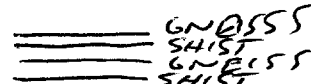
GEOSCIENCE ASSESSMENT  
OFFICE

ALL PROSPECTING AND SAMPLING THAT HAVE TAKEN PLACE, ON PHELPS TWP CLAIM # 1237450, WERE ~~FOR~~ <sup>MAINLY</sup> ~~S~~ FOR GARNET'S ONLY.

ALL GARNET'S FOUND WHERE MOSTLY ON SURFACE, AND, ON THE SOUTHERN END OF ALL EXTREMITIES, WITH LITTLE OR NO OVERBURDEN EXCEPT ON BLOCK'S 7-11-15. BLOCK 7 HAS SLIGHT SAND OVERBURDEN WITH IT'S UPPER MOST EXTREMITIES HAVING 6"=12" OF SANDY GRAVEL MOSS COVERING AND MIXED FOREST.

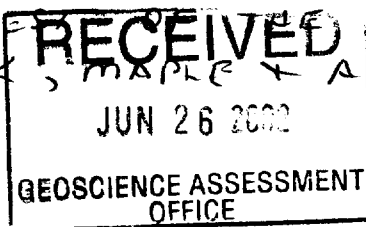
BLOCK'S 11 + 15 HAVE GARNET'S IN A BLACK MICA SHIST IN LAYERS STARTING AT ABOUT  $\frac{1}{2}$  WAY UP ~~THE~~ FROM BOTTOM, ABOUT 50 FEET, TO THE TOP 300 FEET. WITH MIXED TREES ON THE SLOPE & OAK-MAPLE ASH ON THE TOP. ~~THE~~

THE SHIST ROCK IS LAYERED, WITH GNEISS ROCK IN THE MIDDLE

WE.  AND SO ON, ALL THE WAY TO THE TOP, IN DIFFERENT FOOTAGE INTERVAL'S, ~~THE~~

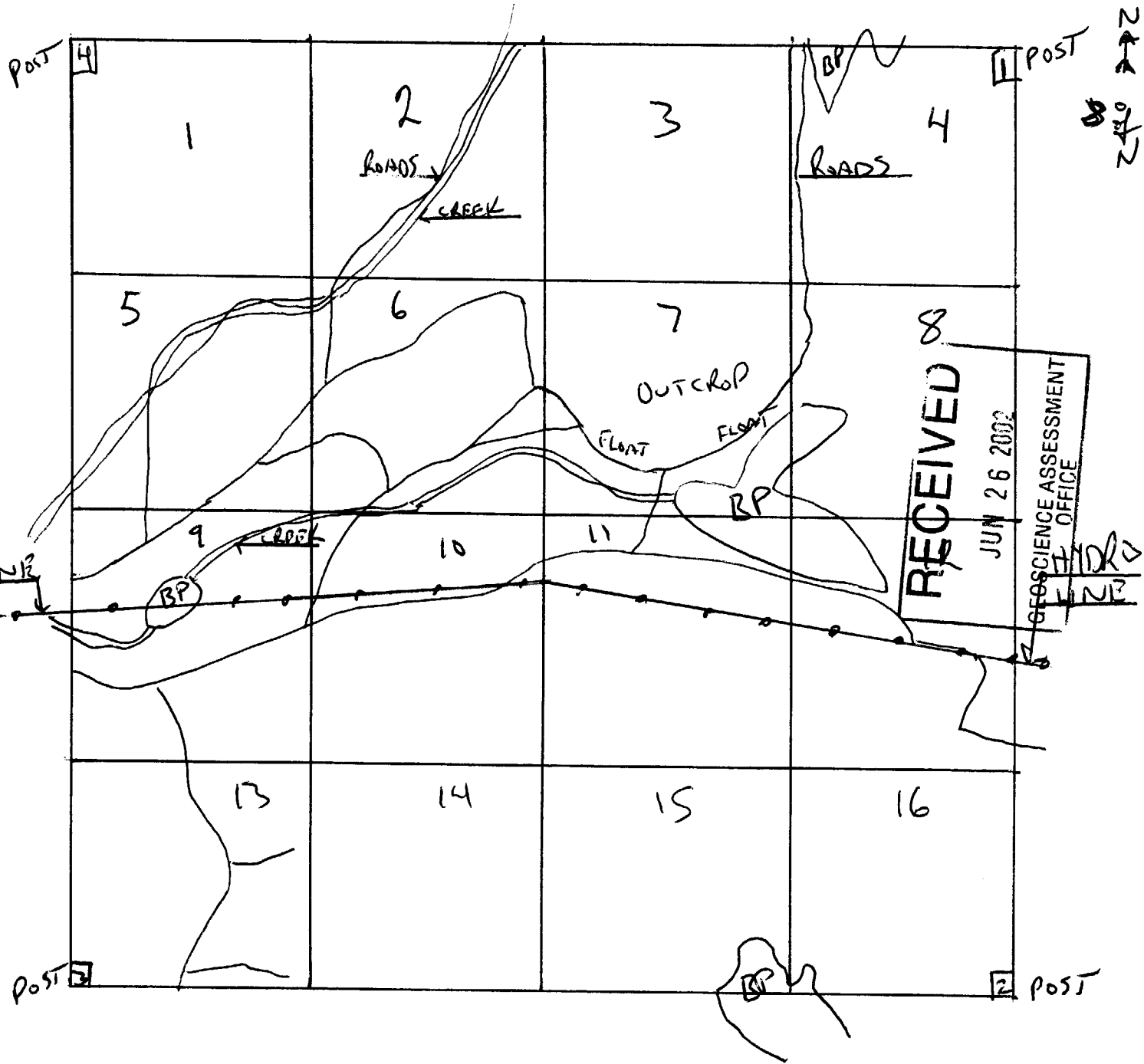
THE ONLY WATER CROSSING TO SPEAK ~~OF~~, IS A SMALL CREEK RUNNING THROUGH CLAIM'S 6-9-10-7, BEING ONLY ABOUT 3' FEET WIDE + 6" INCHES DEEP RUNNING OUT OF A BEAVER POND ON ~~THE~~ BLOCK # 7.

ALL THE ~~RE~~ OF THE CLAIM IS MOSTLY OF AN OAK, MAPLE + ASH FOREST.

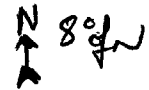


MAPPING  
 GRID KEY  
 FOR  
 PHELPS TWP  
 M-1057  
 ALL BLOCKS =  
 400 M  
 INDIVIDUAL MAPS  
 ALL 400 X 400 =  
 5!!

B.P. = BEAVER  
 POND

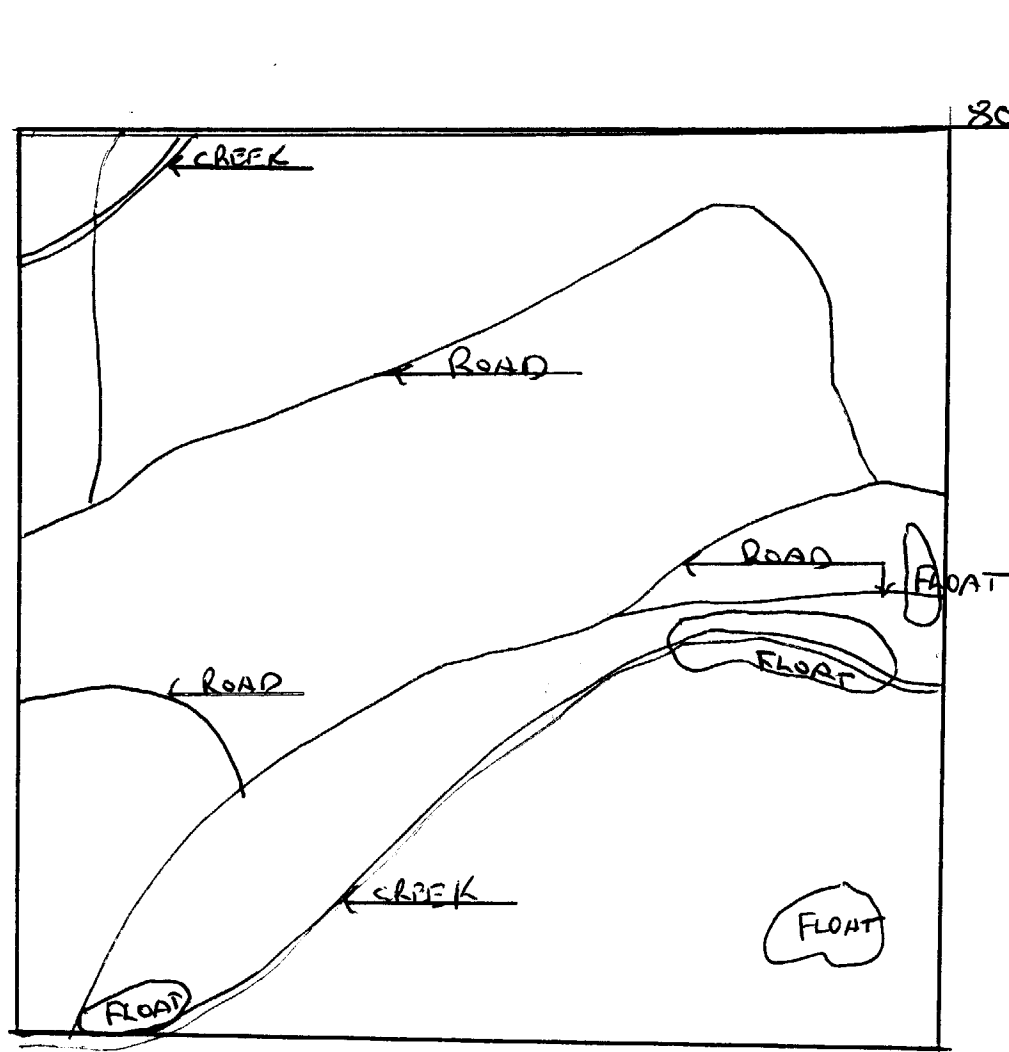


Block 6  
500 x 400 m



PARLPS TWP  
M-1057  
5"=400m

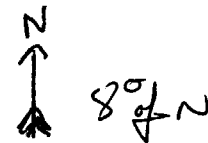
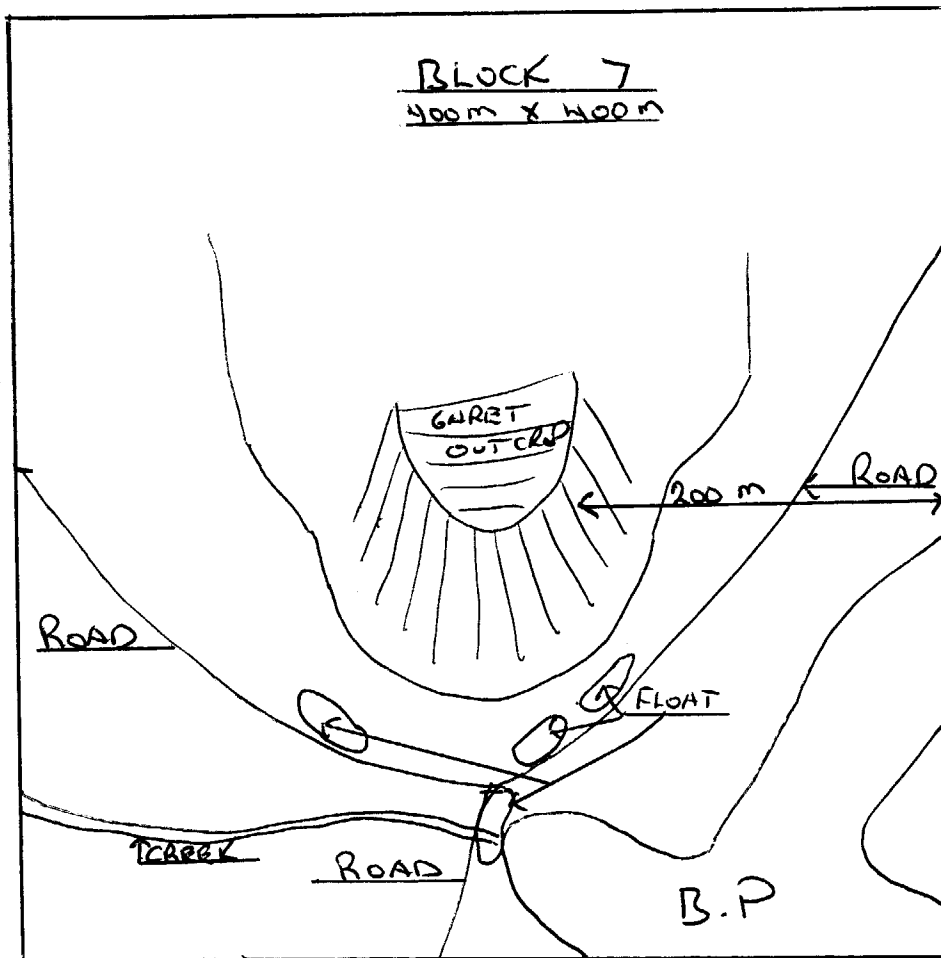
FLOAT IS ALL  
GARNET IN BLACK  
MICA SHIST  
ONLY 1/2 OF BLOCK  
SIX PROSPECTED  
NO NO. OUTCROPPING



800m-N  
TO #1 POST  
800m  
**RECEIVED**  
JUN 26 2002  
GEOSCIENCE ASSESSMENT  
OFFICE

GARNET OUTCROP W  
BLACK MICA SHIST  
WITH LITTLE TO NO  
OVER BURDEN

OVER BURDEN BEING  
LIGHT SAND MOSS  
AND NIGHT MIXED  
VEGETATION SHRUBS  
TREES OAK-MAPLE  
SOME PINE ON  
VERY UPPER EXTREMITYS

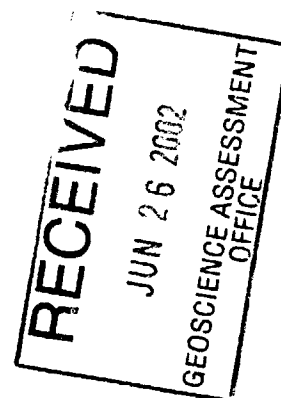


PHILPS TWP

R 1057

5" = 400 m

APPROX 600 m  
N TO #1 POST



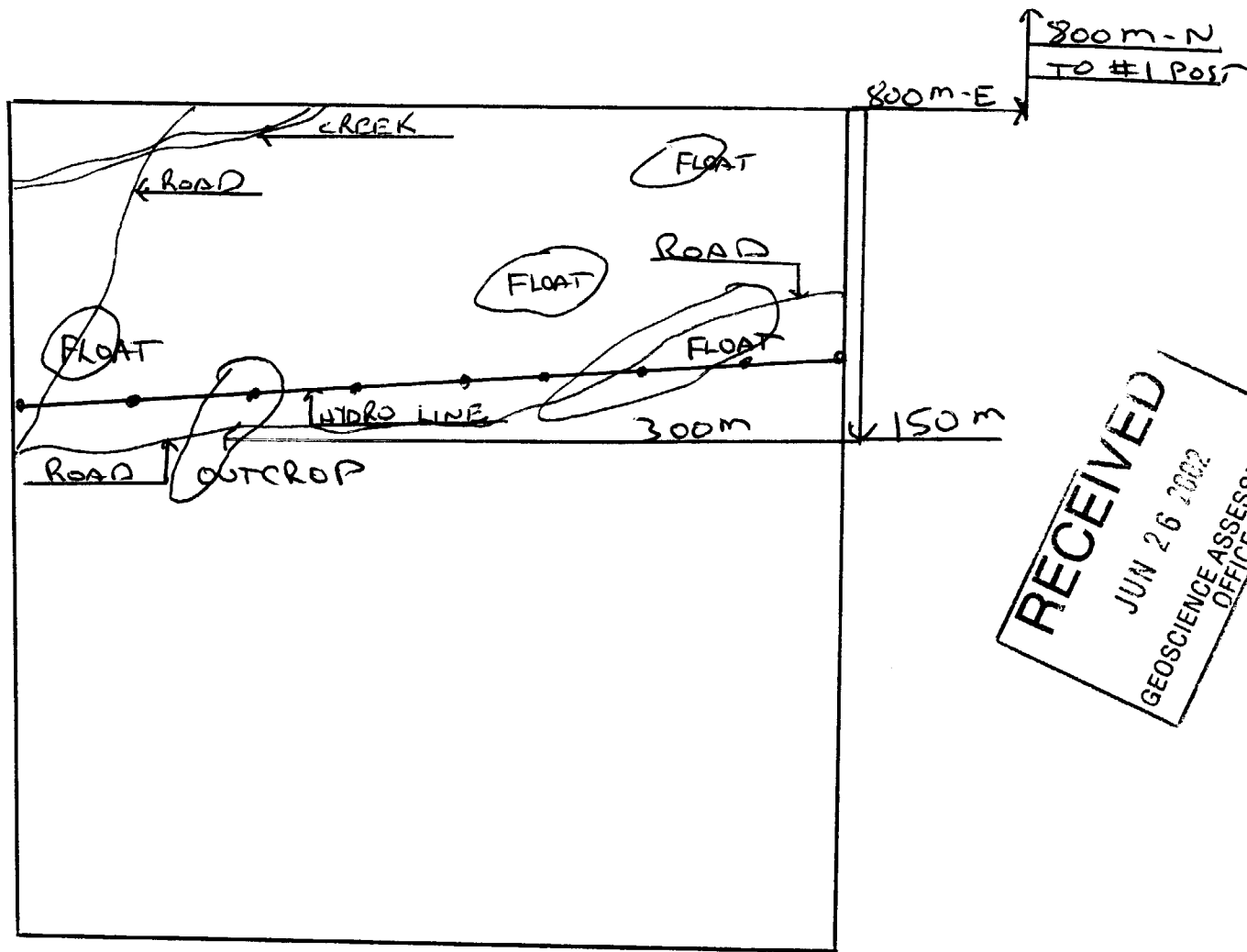


BLOCK 10  
400 m X 400 m

8°N

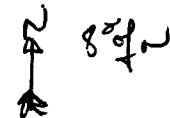
PHELPS TWP  
m-1057  
S"=400m

GARNET OUTCROP  
IN BLACK MICA  
SHIST  
WITH SAND MOSS  
LIGHT SHRUBS AS  
OVERBURDEN

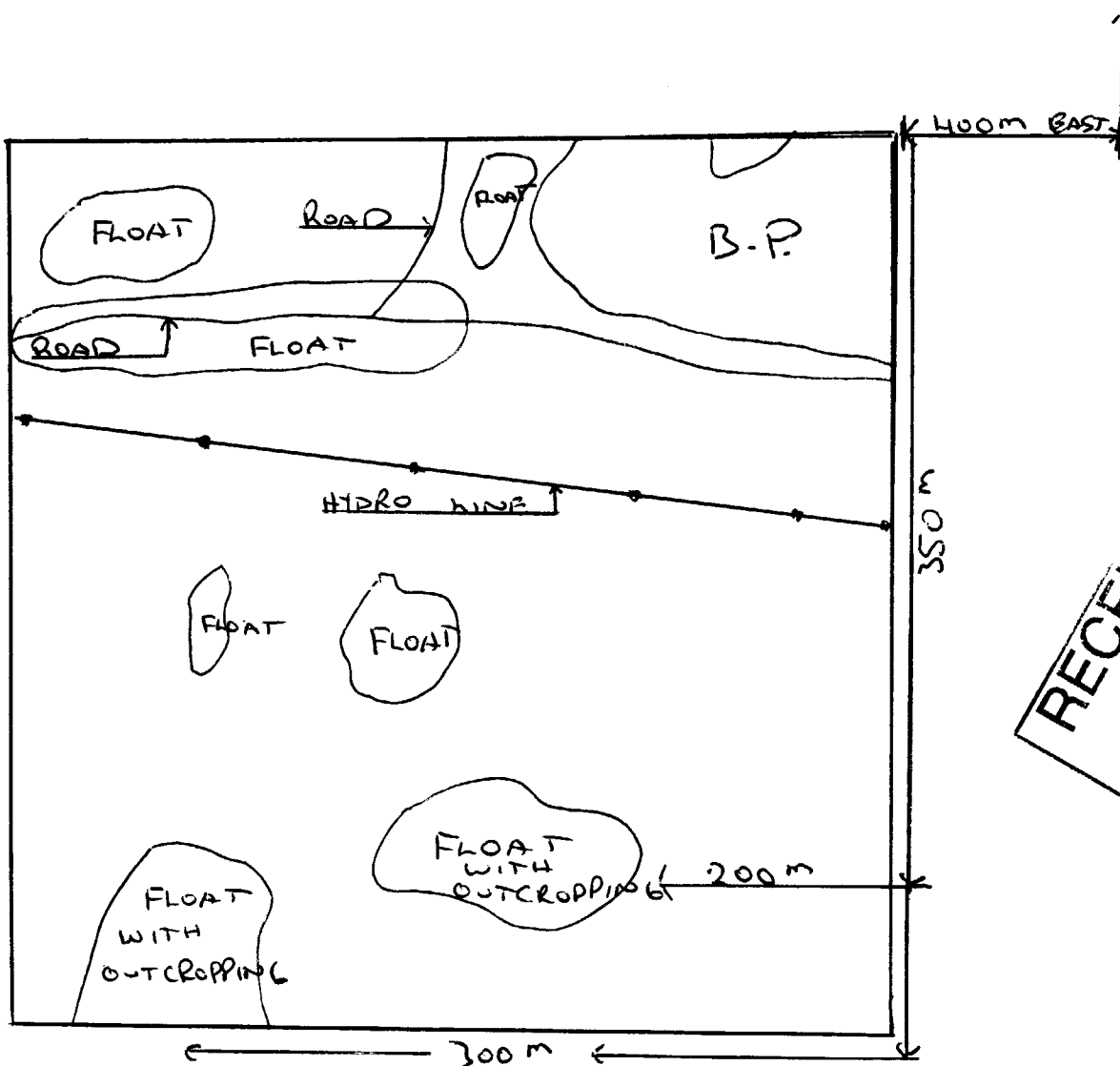


RECEIVED  
JUN 26 2002  
GEO SCIENCE ASSESSMENT  
OFFICE

BLOCK 11  
400 m X 400 m



GARNET OUTCROPPING  
 IN BLACK MICA  
 SHAIST WITH  
 LITTLE TO NO  
 OVERBURDEN  
 OVER BURDEN  
 BEING SAND, MOSS  
 MIXED VEGETATION +  
 SHRUB'S.  
 MAPLE + OAK



800 m N  
TO #1 POST

PHELPS TWP  
m 1057  
5" = 400 m

**RECEIVED**  
 JUN 26 2002  
 GEOSCIENCE ASSESSMENT  
 OFFICE

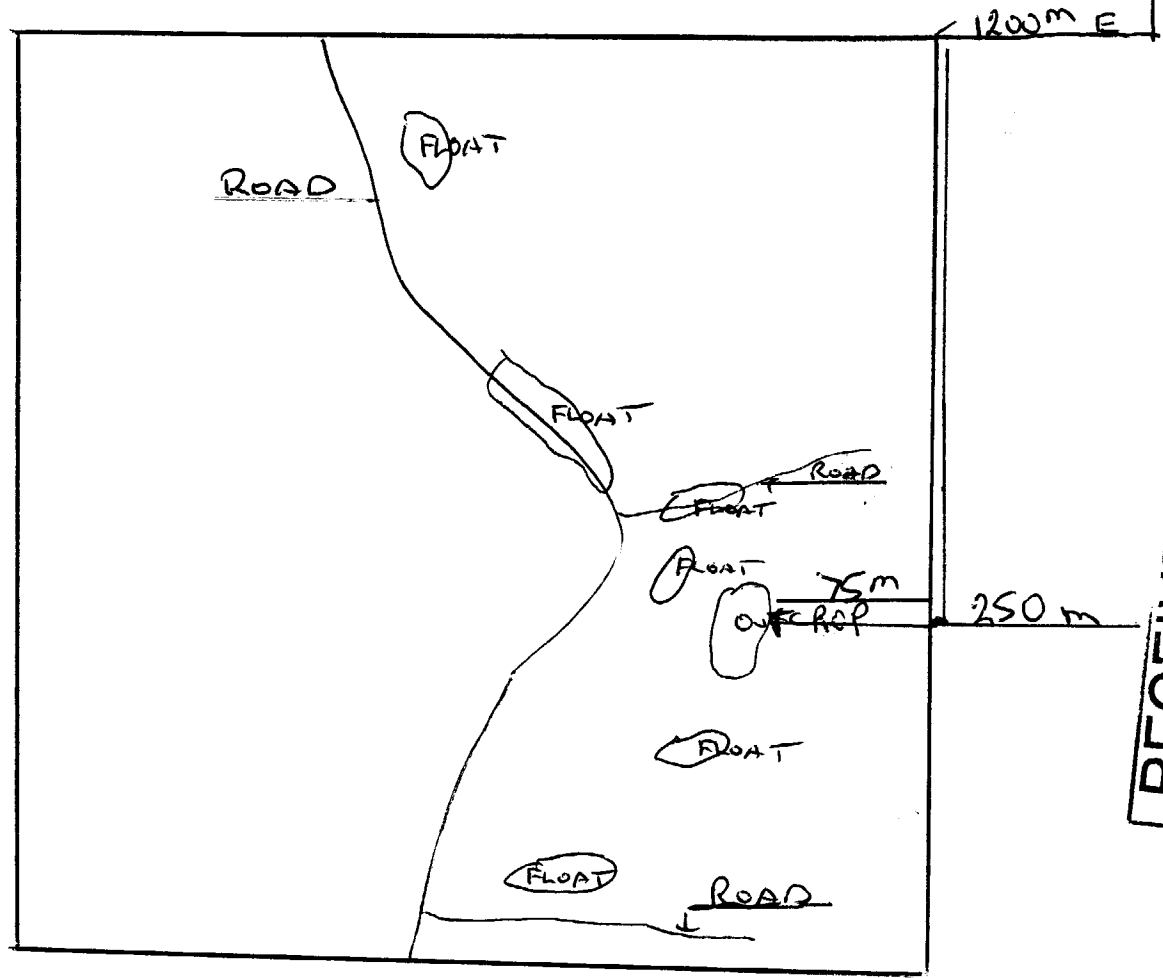


289N

GANGET OJTEROP  
IN BLACK MICA SHIST  
WITH ONLY SAND & MOSS  
AS CURR BURDEN  
SMALL VEGETATION  
OCCASIONAL OAK &  
ELM

BLOCK 13  
400m x 400m

1200m N  
TO #1 POST

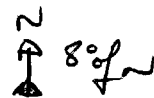


PAWELB TWP  
M-1057  
5" = 400m

RECEIVED  
JUN 26 2002  
GEOSCIENCE ASSESSMENT  
OFFICE

2.23110

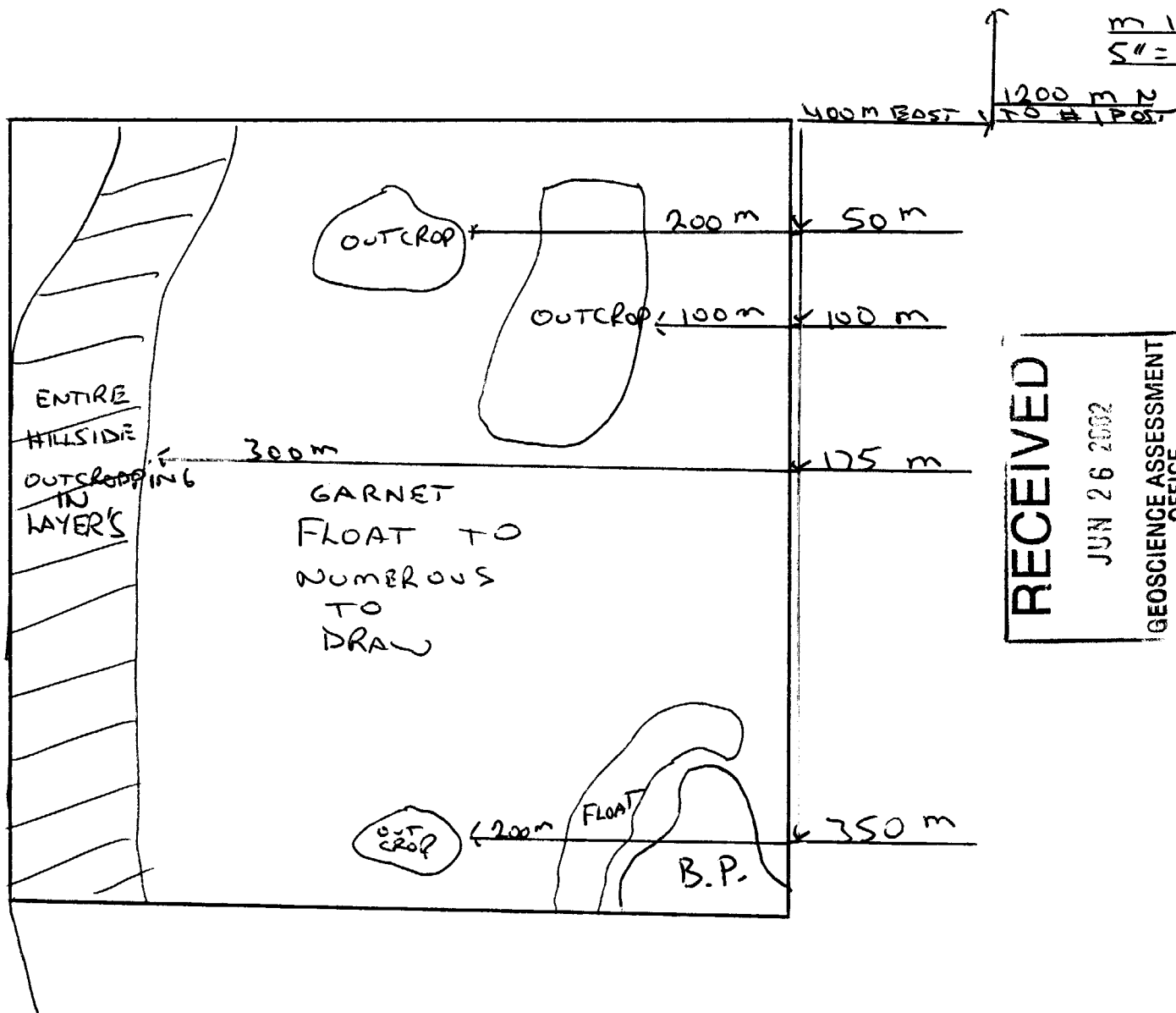
BLOCK 15  
400m x 400m



PAHELPS TWP  
m 1057  
S" = 400m

GARNET OUTCROP  
IN BLACK MICA  
SHAIST WITH  
LITTLE TO NO  
OVER BURDEN  
OVER BURDEN BEING  
LIGHT VEGETATION  
SAND MOSS.

EXCEPT HILLSIDE  
OVER BURDEN BEING  
MIXED ROCK  
GNEISS, <sup>BLACK</sup> MICA SHAIST  
AND ?  
SAND, MIXED  
BUSH  
BAXAM, OAK, MORE  
SHRUBS



**RECEIVED**  
JUN 26 2002  
GEOSCIENCE ASSESSMENT  
OFFICE

PROSPECTED OF CLAIM # 1237450

	# OF PERSON'S	TOTAL
JULY/5/001	TWO	X 150.00 = 300
JULY/9/001	TWO	X 150.00 = 300
JULY/10/001	TWO	X 150.00 = 300
JULY/17/001	TWO	X 150.00 = 300
JULY/18/001	TWO	X 150.00 = 300
AUG/4/001	TWO	X 150.00 = 300
AUG/5/001	TWO	X 150.00 = 300
AUG/6/001	TWO	X 150.00 = 300
AUG/7/001	TWO	X 150.00 = 300
AUG/12/001	TWO	X 150.00 = 300
AUG/13/001	TWO	X 150.00 = 300
AUG/18/001	ONE	X 150.00 = 150
AUG/19/001	ONE	X 150.00 = 150
SEPT/01/001	TWO	X 150.00 = 300
SEPT/4/001	TWO	X 150.00 = 300
SEPT/5/001	TWO	X 150.00 = 300
SEPT/6/001	TWO	X 150.00 = 300
SEPT/15/001	TWO	X 150.00 = 300
SEPT/16/001	TWO	X 150.00 = 300
SEPT/17/001	TWO	X 150.00 = 300
OCT/1/001	ONE	X 150.00 = 150
OCT/2/001	ONE	X 150.00 = 150
NOV/2/001	ONE	X 150.00 = 150
NOV/3/001	TWO	X 150.00 = 300
NOV/4/001	TWO	X 150.00 = 300
NOV/5/001	TWO	X 150.00 = 300
NOV/6/001	TWO	X 150.00 = 300
NOV/7/001	TWO	X 150.00 = 300
NOV/8/001	TWO	X 150.00 = 300
NOV/9/001	TWO	X 150.00 = 300
NOV/10/001	<u>TWO</u>	X 150.00 = 300

# THIS PAGE TOTAL 57 DAY'S

CONTINUE  
NEXT PAGE

# PROSPECTING OF CLAIM # 1237450

	# OF PERSONS	TOTAL
NOV/11/001	TWO	X 150.00 = 300
NOV/12/001	TWO	X 150.00 = 300
NOV/13/001	TWO	X 150.00 = 300
NOV/14/001	TWO	X 150.00 = 300
NOV/15/001	ONE	X 150.00 = 150.00
NOV/16/001	ONE	X 150.00 = 150.
NOV/17/001	ONE	X 150.00 = 150.
NOV/18/001	ONE	X 150.00 = 150
<hr/>		
TOTAL DAYS APPLIED	12 + 57	TOTAL WORK APPLIED \$10,350.00
	TOTAL 69	

PROSPECTED CLAIM # 1237448

	# OF PERSON'S	TOTAL
NOV / 23 / 001	ONE X	150.00 = 150
NOV / 24 / 001	ONE Y	150.00 = 150
NOV / 25 / 001	ONE X	150.00 = 150
DEC / 1 / 001	ONE X	150.00 = 150
DEC / 2 / 001	ONE X	150.00 = 150
DEC / 3 / 001	ONE X	150.00 = 150
DEC / 4 / 001	ONE X	150.00 = 150
DEC / 5 / 001	ONE X	150.00 = 150
DEC / 6 / 001	ONE X	150.00 = 150
TOTAL DAYS APPLIED	9	TOTAL 1,350

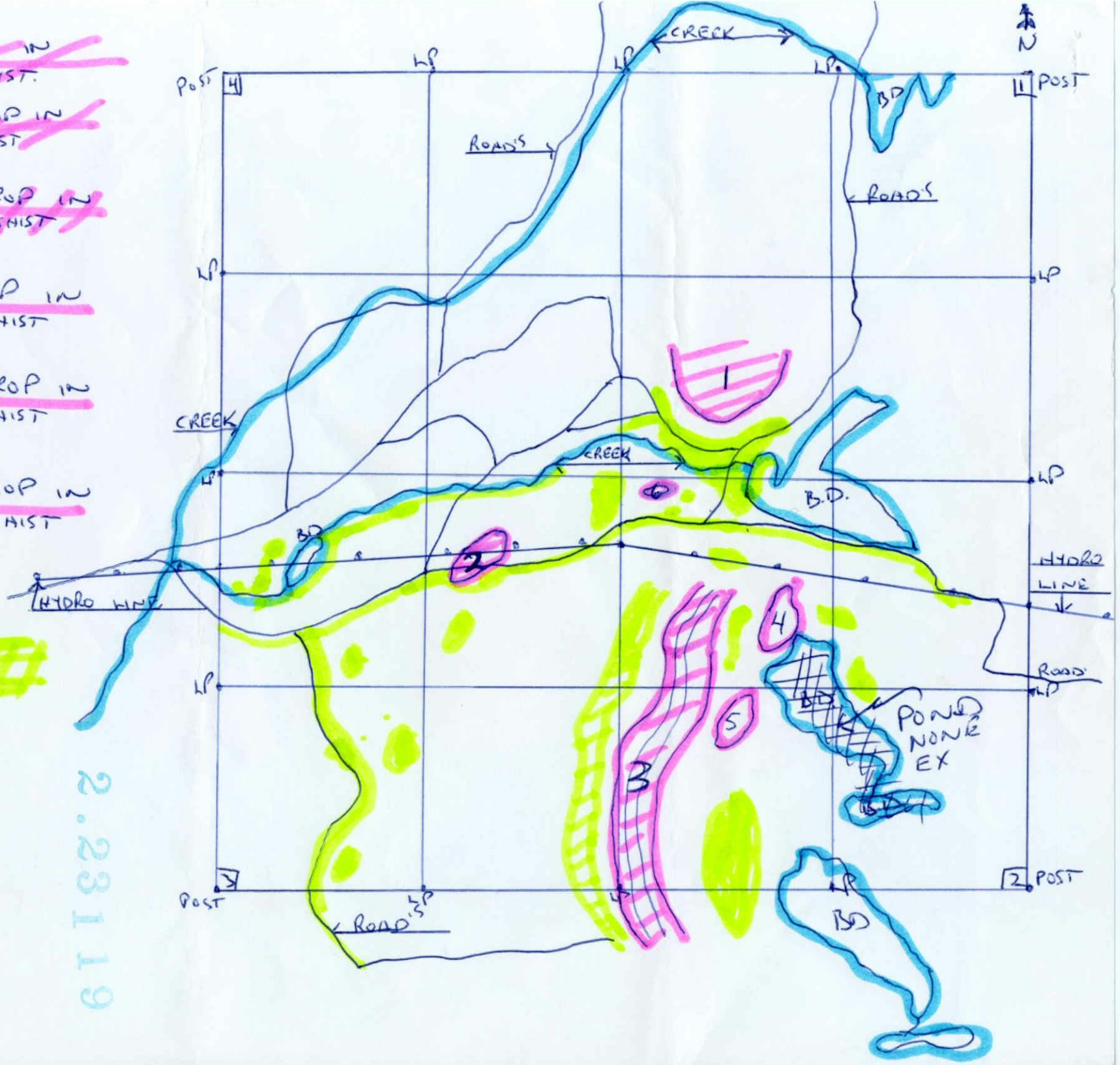
- 1 ~~GARNET OUTCROP IN BLACK MICA SHIST.~~
- 2 ~~GARNET OUTCROP IN BLACK MICA SHIST~~
- 3 ~~GARNET OUTCROP IN BLACK MICA SHIST~~
- 4 GARNET OUTCROP IN BLACK MICA SHIST
- 5 GARNET OUTCROP IN BLACK MICA SHIST
- 6 GARNET OUTCROP IN BLACK MICA SHIST

ALL GREEN IS GARNET HOAT IN BLACK MICA SHIST

CLAIM #  
1237450  
PHELPS TWP  
M-1057

$1\frac{3}{4} = \frac{1}{4}$  MILE  
= 400 m

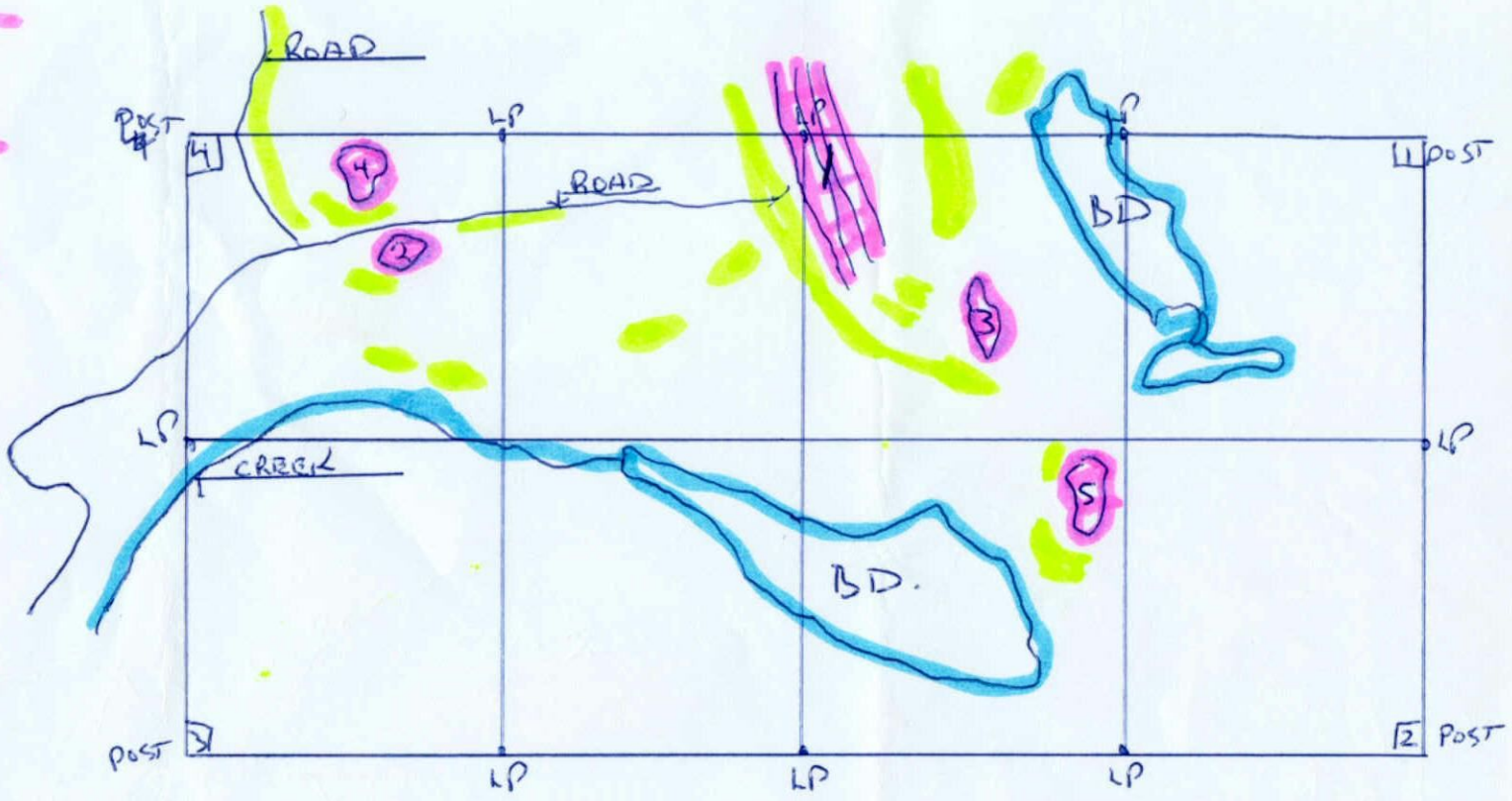
2.23119





- ① GARNET OUTCROP IN BLACK MICA SHIST
- ② GARNET OUTCROP IN BLACK MICA SHIST
- ③ GARNET OUTCROP IN BLACK MICA SHIST
- ④ GARNET OUTCROP IN BLACK MICA SHIST
- ⑤ GARNET OUTCROP IN BLACK MICA SHIST

ALL GREEN IS GARNET FLOAT IN BLACK MICA SHIST



CLAIM # 1237448

PHELDIP TWP  
M-1057

$$1\frac{3}{4} = \frac{1}{4} \text{ MILE} \\ = 400 \text{ m}$$

2.23119

**Work Report Summary**

Transaction No: W0270.00413 Status: APPROVED  
Recording Date: 2002-MAR-04 Work Done from: 2001-JUL-05  
Approval Date: 2002-JUL-25 to: 2001-NOV-18

Client(s):  
189914 ROY, TRACY GORDON

Survey Type(s):  
PROSP

**Work Report Details:**

Claim#	Perform	Perform Approve	Applied	Applied Approve	Assign	Assign Approve	Reserve	Reserve Approve	Due Date
S 1237450	\$10,350	\$10,350	\$10,350	\$10,350	\$0	0	\$0	\$0	2004-JUN-26
	\$10,350	\$10,350	\$10,350	\$10,350	\$0	\$0	\$0	\$0	

External Credits: \$0

Reserve: \$0 Reserve of Work Report#: W0270.00413

\$0 Total Remaining

Status of claim is based on information currently on record.



31L06SE2001 2.23119 PHELPS

900



Date: 2002-JUL-25

GEOSCIENCE ASSESSMENT OFFICE  
933 RAMSEY LAKE ROAD, 6th FLOOR  
SUDBURY, ONTARIO  
P3E 6B5

TRACY GORDON ROY  
2176 TROUT LAKE ROAD  
NORTH BAY, ONTARIO  
P1B 7S2 CANADA

Tel: (888) 415-9845  
Fax: (877) 670-1555

**Submission Number:** 2.23119  
**Transaction Number(s):** W0270.00413

Dear Sir or Madam

**Subject: Approval of Assessment Work**

We have approved your Assessment Work Submission with the above noted Transaction Number(s). The attached Work Report Summary indicates the results of the approval.

At the discretion of the Ministry, the assessment work performed on the mining lands noted in this work report may be subject to inspection and/or investigation at any time.

The revisions outlined in the Notice dated May 27, 2002 have for the most part been corrected. Accordingly, assessment work credit has been approved as outlined on the Amended Declaration of Assessment Work Form that accompanied this submission.

**NOTE:** Future submissions of prospecting will require more details in the report on the nature and content of the work and the observations made.

If you have any question regarding this correspondence, please contact BRUCE GATES by email at [bruce.gates@ndm.gov.on.ca](mailto:bruce.gates@ndm.gov.on.ca) or by phone at (705) 670-5856.

Yours Sincerely,



Ron Gashinski  
Senior Manager, Mining Lands Section

**Cc:** Resident Geologist

Tracy Gordon Roy  
(Claim Holder)

Assessment File Library

Tracy Gordon Roy  
(Assessment Office)

