



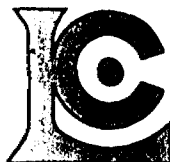
31L11NW0001 2.14047 MCAUSLAN

010

Geotechnical Analysis
Table and Maps.

McAUSLAN TWP.

1991



Chemex Labs Ltd.

Analytical Chemists * Geochemists * Registered Assayers
5175 Timberlea Blvd., Mississauga,
Ontario, Canada L4W 2S3
PHONE: 416-624-2806

To: HOGG, WILLIAM A.

22 MAXOME AVE.
WILLOWDALE, ON
M2M 3J9

A9110403

Comments:

CERTIFICATE

A9110403

HOGG, WILLIAM A.

Project:

P.O.#:

Samples submitted to our lab in Mississauga, ON.
This report was printed on 7-FEB-91.

SAMPLE PREPARATION

CHEMEX CODE	NUMBER SAMPLES	DESCRIPTION
208	40	Assay ring to approx 150 mesh
294	40	Crush and split (0-10 pounds)
232	40	PERCHLORIC-NITRIC-HYDROFLUORIC D

ANALYTICAL PROCEDURES

CHEMEX CODE	NUMBER SAMPLES	DESCRIPTION	METHOD	DETECTION LIMIT	UPPER LIMIT
378	40	SiO2 %: Carbonate fusion	GRAVIMETRIC	0.01	100.00
578	40	Ag ppm: 24 element, rock & core	AAS	0.5	200
573	40	Al %: 24 element, rock & core	ICP-AES	0.01	25.0
565	40	Ba ppm: 24 element, rock & core	ICP-AES	10	10000
575	40	Be ppm: 24 element, rock & core	ICP-AES	0.5	10000
561	40	Bi ppm: 24 element, rock & core	ICP-AES	2	10000
576	40	Ca %: 24 element, rock & core	ICP-AES	0.01	25.0
562	40	Cd ppm: 24 element, rock & core	ICP-AES	0.5	10000
563	40	Co ppm: 24 element, rock & core	ICP-AES	1	10000
569	40	Cr ppm: 24 element, rock & core	ICP-AES	1	10000
577	40	Cu ppm: 24 element, rock & core	ICP-AES	1	10000
566	40	Fe %: 24 element, rock & core	ICP-AES	0.01	25.0
584	40	K %: 24 element, rock & core	ICP-AES	0.01	20.0
570	40	Mg %: 24 element, rock & core	ICP-AES	0.01	20.0
568	40	Mn ppm: 24 element, rock & core	ICP-AES	5	10000
554	40	Mo ppm: 24 element, rock & core	ICP-AES	1	10000
583	40	Na %: 24 element, rock & core	ICP-AES	0.01	5.00
564	40	Ni ppm: 24 element, rock & core	ICP-AES	1	10000
559	40	P ppm: 24 element, rock & core	ICP-AES	10	10000
560	40	Pb ppm: 24 element, rock & core	ICP-AES	2	10000
582	40	Sr ppm: 24 element, rock & core	ICP-AES	1	10000
579	40	Ti %: 24 element, rock & core	ICP-AES	0.01	10.00
572	40	V ppm: 24 element, rock & core	ICP-AES	1	10000
556	40	W ppm: 24 element, rock & core	ICP-AES	10	10000
558	40	Zn ppm: 24 element, rock & core	ICP-AES	2	10000



Chemex Labs Ltd.

Analytical Chemists * Geochemists * Registered Assayers
 5175 Timberlea Blvd., Mississauga,
 Ontario, Canada L4W 2S3
 PHONE: 416-624-2806

To: HOGG, WILLIAM A.

22 MAXOME AVE.
 WILLOWDALE, ON
 M2M 3J9

Project :
 Comments :

Page Number :1-A
 Total Pages :1
 Certificate Date:07-FEB-91
 Invoice No. :19110403
 P.O. Number :

CERTIFICATE OF ANALYSIS A9110403

SAMPLE DESCRIPTION	PRKP CODE	SiO2 % fusion	Ag ppm AAS	Al % (ICP)	Ba ppm (ICP)	Be ppm (ICP)	Bi ppm (ICP)	Ca % (ICP)	Cd ppm (ICP)	Co ppm (ICP)	Cr ppm (ICP)	Cu ppm (ICP)	Fe % (ICP)	K % (ICP)	Mg % (ICP)
294607	208 294	95.74	< 0.5	1.68	140	< 0.5	< 2	0.02	< 0.5	< 1	36	4	0.68	0.65	0.03
294608	208 294	94.14	< 0.5	1.90	80	< 0.5	< 2	< 0.01	< 0.5	< 1	38	5	0.57	0.80	0.03
294609	208 294	89.33	< 0.5	1.66	140	< 0.5	< 2	< 0.01	< 0.5	< 1	39	3	0.69	0.43	0.01
294610	208 294	94.77	< 0.5	0.71	180	< 0.5	< 2	0.01	< 0.5	1	130	44	0.84	0.15	< 0.01
294611	208 294	96.08	< 0.5	0.24	30	< 0.5	< 2	0.01	< 0.5	< 1	9	29	0.59	0.05	< 0.01
294612	208 294	93.67	< 0.5	0.74	10	< 0.5	2	0.01	< 0.5	1	8	16	0.72	0.06	< 0.01
294613	208 294	89.35	< 0.5	1.30	160	< 0.5	4	0.01	< 0.5	2	7	3	0.92	0.37	0.01
294614	208 294	88.91	< 0.5	2.25	140	< 0.5	2	0.01	< 0.5	1	6	3	0.90	0.64	0.01
294615	208 294	89.08	< 0.5	3.05	300	0.5	2	0.01	< 0.5	1	6	3	0.69	0.94	0.01
294616	208 294	89.08	< 0.5	0.97	70	< 0.5	< 2	< 0.01	< 0.5	2	9	4	1.03	0.26	< 0.01
294617	208 294	92.80	< 0.5	0.58	60	< 0.5	2	0.01	< 0.5	< 1	8	5	0.69	0.17	< 0.01
294618	208 294	90.86	< 0.5	0.66	50	< 0.5	2	< 0.01	< 0.5	< 1	9	9	0.69	0.13	< 0.01
294619	208 294	93.80	< 0.5	0.78	70	< 0.5	2	< 0.01	< 0.5	< 1	12	13	0.64	0.22	< 0.01
294620	208 294	95.30	< 0.5	0.51	40	< 0.5	2	< 0.01	< 0.5	< 1	10	6	0.53	0.13	< 0.01
294621	208 294	91.47	< 0.5	0.70	30	< 0.5	< 2	0.02	< 0.5	< 1	10	7	0.79	0.14	0.01
294622	208 294	92.43	< 0.5	0.60	50	< 0.5	< 2	0.02	< 0.5	< 1	11	6	0.51	0.10	< 0.01
294623	208 294	92.33	< 0.5	0.37	20	< 0.5	< 2	0.01	< 0.5	< 1	9	6	0.66	0.08	< 0.01
294624	208 294	90.22	< 0.5	0.57	30	< 0.5	4	0.01	< 0.5	< 1	13	5	1.11	0.13	< 0.01
294625	208 294	93.07	< 0.5	0.51	20	< 0.5	2	0.01	< 0.5	1	10	4	0.65	0.13	< 0.01
294626	208 294	94.23	< 0.5	0.27	10	< 0.5	6	0.01	< 0.5	1	12	5	0.71	0.02	< 0.01
294627	208 294	91.26	< 0.5	0.33	20	< 0.5	4	0.01	< 0.5	< 1	11	6	0.80	0.05	< 0.01
294628	208 294	93.10	< 0.5	0.43	20	< 0.5	4	0.01	< 0.5	< 1	11	5	0.82	0.10	< 0.01
294629	208 294	92.79	< 0.5	0.43	30	< 0.5	2	< 0.01	< 0.5	< 1	10	5	0.96	0.08	< 0.01
294630	208 294	92.16	< 0.5	0.44	20	< 0.5	2	< 0.01	< 0.5	< 1	116	2	0.44	0.07	< 0.01
294631	208 294	93.44	< 0.5	0.36	10	< 0.5	< 2	0.01	< 0.5	< 1	162	3	0.51	0.06	< 0.01
294632	208 294	94.93	< 0.5	0.40	20	< 0.5	2	0.01	< 0.5	< 1	209	3	0.48	0.08	< 0.01
294633	208 294	97.28	< 0.5	0.73	30	< 0.5	< 2	< 0.01	< 0.5	< 1	203	4	0.39	0.24	< 0.01
294634	208 294	96.40	< 0.5	0.37	10	< 0.5	< 2	< 0.01	< 0.5	< 1	292	4	0.40	0.09	< 0.01
294635	208 294	93.13	< 0.5	0.32	10	< 0.5	< 2	< 0.01	< 0.5	< 1	237	3	0.40	0.05	< 0.01
294636	208 294	94.42	< 0.5	0.24	10	< 0.5	< 2	0.01	< 0.5	< 1	230	3	0.45	0.01	< 0.01
294637	208 294	94.97	< 0.5	0.32	30	< 0.5	< 2	< 0.01	< 0.5	< 1	134	2	0.35	0.06	< 0.01
294638	208 294	92.78	< 0.5	0.36	10	< 0.5	< 2	< 0.01	< 0.5	< 1	122	3	0.57	0.05	< 0.01
294639	208 294	94.13	< 0.5	0.32	30	< 0.5	< 2	0.01	< 0.5	< 1	139	2	0.49	0.05	< 0.01
294640	208 294	93.96	< 0.5	0.51	40	< 0.5	< 2	< 0.01	< 0.5	< 1	130	3	0.55	0.09	< 0.01
294641	208 294	85.75	< 0.5	1.35	70	0.5	2	0.0	0.5	1	179	2	0.55	0.41	0.01
294642	208 294	94.44	< 0.5	0.39	20	< 0.5	< 2	< 0.01	< 0.5	< 1	83	2	0.27	0.09	< 0.01
294643	208 294	94.39	< 0.5	0.47	10	< 0.5	< 2	< 0.01	< 0.5	< 1	151	3	0.42	0.13	< 0.01
294644	208 294	96.56	< 0.5	0.30	20	< 0.5	2	< 0.01	< 0.5	< 1	124	3	0.29	0.08	< 0.01
294645	208 294	93.80	< 0.5	2.04	90	< 0.5	< 2	< 0.01	< 0.5	< 1	209	1	0.48	0.79	< 0.01
294647	208 294	86.05	< 0.5	3.15	160	0.5	< 2	0.01	< 0.5	< 1	265	2	0.70	0.86	< 0.01

CERTIFICATION:

B. Coughlin

40 samples



Chemex Labs Ltd.

Analytical Chemists * Geochemists * Registered Assayers
5175 Timberlea Blvd., Mississauga,
Ontario, Canada L4W 2S3
PHONE: 416-624-2806

To: HOGG, WILLIAM A.

22 MAXOME AVE.
WILLOWDALE, ON
M2M 3J9

Page Number :1-B
Total Pages :1
Certificate Date: 07-FEB-91
Invoice No. :18110403
P.O. Number :

Project :
Comments :

CERTIFICATE OF ANALYSIS A9110403

SAMPLE DESCRIPTION	PREP CODE	Mn ppm (ICP)	Mo ppm (ICP)	Cd % (ICP)	Ni ppm (ICP)	P ppm (ICP)	Pb ppm (ICP)	Sr ppm (ICP)	Ti % (ICP)	V ppm (ICP)	W ppm (ICP)	Zn ppm (ICP)			
294607	208 294	40	< 1	0.13	4	50	2	12	0.04	3	< 10	8			
294608	208 294	35	< 1	0.08	6	40	4	12	0.03	4	< 10	4			
294609	208 294	25	< 1	0.06	4	80	2	25	0.03	5	< 10	2			
294610	208 294	45	1	0.04	7	80	2	16	0.02	4	< 10	4			
294611	208 294	45	1	0.02	5	50	< 2	14	< 0.01	1	< 10	2			
294612	208 294	40	< 1	0.02	4	80	< 2	23	0.01	2	< 10	2			
294613	208 294	30	< 1	0.04	5	100	< 2	20	0.05	6	< 10	4			
294614	208 294	20	< 1	0.07	4	90	< 2	23	0.07	9	< 10	4			
294615	208 294	20	< 1	0.11	3	100	4	30	0.05	6	< 10	4			
294616	208 294	35	1	0.03	4	70	2	15	0.03	6	10	2			
294617	208 294	35	< 1	0.02	4	70	< 2	26	0.01	2	< 10	2			
294618	208 294	30	< 1	0.02	4	80	4	22	0.01	3	< 10	4			
294619	208 294	30	< 1	0.03	4	70	4	18	0.02	4	< 10	2			
294620	208 294	35	< 1	0.02	3	50	< 2	30	0.01	2	< 10	< 2			
294621	208 294	40	< 1	0.03	4	350	4	356	0.02	3	< 10	4			
294622	208 294	35	< 1	0.02	4	470	< 2	448	0.01	1	< 10	2			
294623	208 294	45	< 1	0.02	6	60	< 2	26	0.01	1	< 10	2			
294624	208 294	60	< 1	0.02	4	80	4	27	0.03	2	10	4			
294625	208 294	35	< 1	0.02	4	60	4	20	0.01	3	< 10	2			
294626	208 294	50	< 1	0.01	5	70	6	29	< 0.01	< 1	< 10	2			
294627	208 294	55	1	0.01	5	90	2	38	0.01	1	< 10	2			
294628	208 294	50	1	0.01	6	80	2	24	0.01	2	< 10	2			
294629	208 294	60	< 1	0.01	6	70	2	29	0.01	1	< 10	2			
294630	208 294	20	< 1	0.01	2	80	2	21	0.01	2	< 10	2			
294631	208 294	25	< 1	0.01	3	70	4	18	0.01	2	< 10	2			
294632	208 294	20	< 1	0.02	3	70	4	26	0.01	2	< 10	< 4			
294633	208 294	15	< 1	0.03	3	40	4	16	0.01	7	< 10	< 2			
294634	208 294	15	< 1	0.03	4	40	12	16	0.01	4	< 10	< 2			
294635	208 294	20	< 1	0.01	1	60	8	32	0.01	1	< 10	< 2			
294636	208 294	25	< 1	0.01	4	60	6	20	0.01	2	< 10	2			
294637	208 294	15	< 1	0.01	2	50	6	17	0.01	2	< 10	< 2			
294638	208 294	65	< 1	0.01	4	60	6	21	0.01	2	< 10	2			
294639	208 294	30	< 1	0.01	1	60	4	20	0.01	2	< 10	< 2			
294640	208 294	20	< 1	0.01	3	80	4	49	0.01	4	< 10	2			
294641	208 294	35	< 1	0.05	4	170	4	121	0.03	5	< 10	4			
294642	208 294	15	< 1	0.02	2	60	2	30	0.01	2	< 10	< 2			
294643	208 294	15	< 1	0.01	2	50	2	22	0.01	5	< 10	< 2			
294644	208 294	15	< 1	0.01	2	50	< 2	12	< 0.01	3	< 10	< 2			
294645	208 294	15	< 1	0.09	3	60	2	20	0.03	11	< 10	2			
294647	208 294	10	< 1	0.15	4	150	4	76	0.06	12	< 10	4			

CERTIFICATION:

B. Coughlin

40 samples.

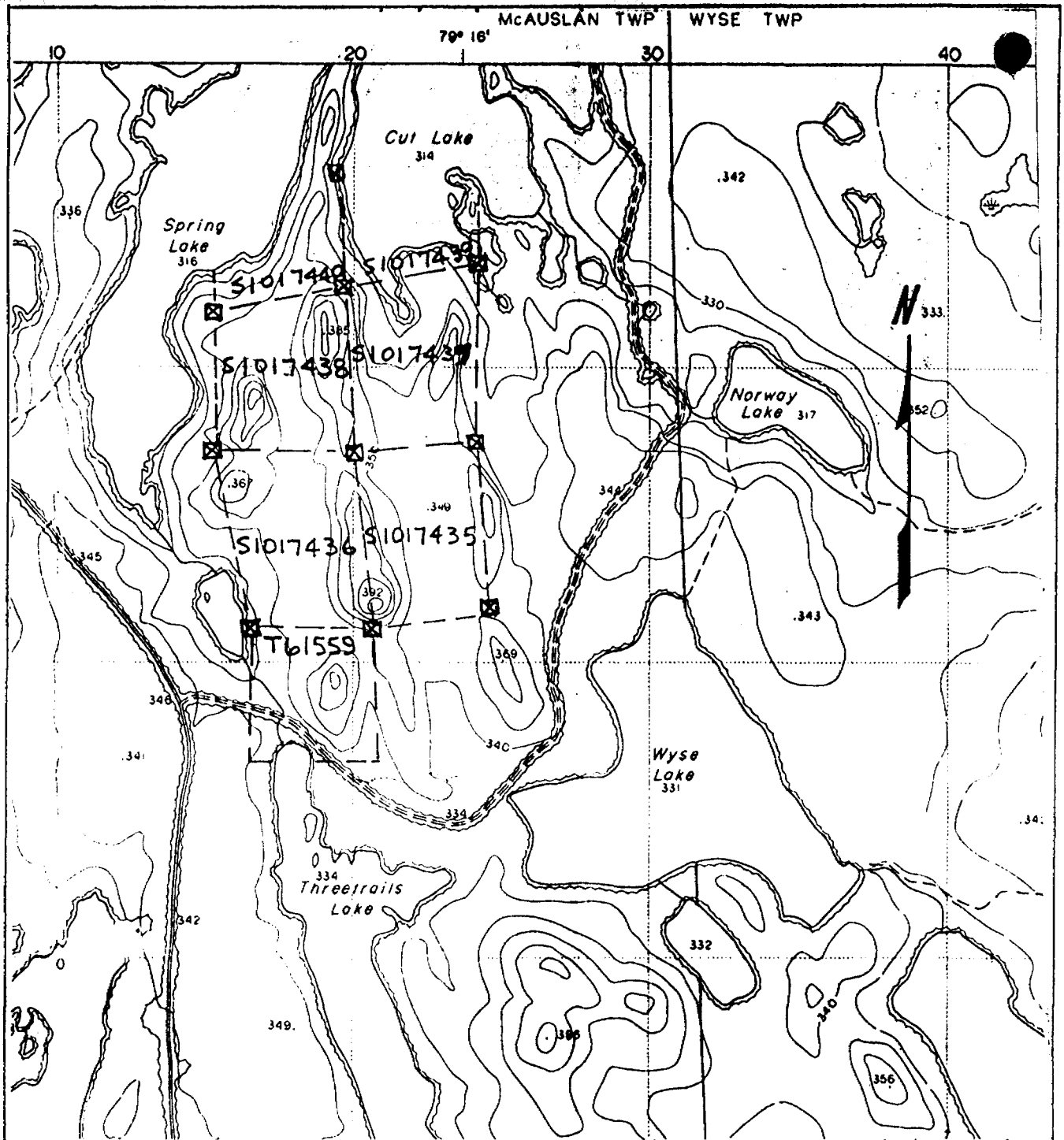


FIGURE II - CLAIMS LOCATION

HOGG SILICA PROSPECT

McAUSLAN TWP., ONT.

SUDBURY MINING DIVISION

SCALE: 1:20,000
or 1" = 1,667 Feet

DATE:

Also see Report
Submitted for
Assessment Oct/90
for further details

S1017440

S1017439



626
x623
624
x625
642
x641

627 x640
x628 x639
x629 x638
x630 x637
x631 x636
x632 x635
x633 x634

x644

S1017437

2.14047



RECEIVED

APR 12 1991

MINING LANDS SECTION

S1017438

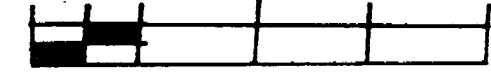
x620 x621 x622
x617 x618 x619
x612 x611
x616 x613 x610
x615
x614 x609

x608
x607

606
x

SAMPLE LOCATION MAP
SILICA PROSPECT
Mc AUSLAN TWP.
SUDBURY MINING DIVISION, ONTARIO

100 50 0 100 200 300



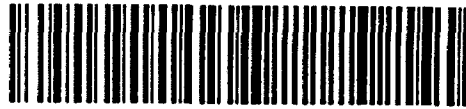
Scale in feet



Ministry of Northern Development and Mines

Mining Lands

W 9170 00072



31L11NW0001 2.14047 MCAUSLAN

900

Mining Act **Report of Work**
(Expenditures, Subsection 77(19))

Type of Work Performed GEOCHEMICAL	Mining Division SUBBURY	Township or Area McAUSLAN (G.1630)
Recorded Holder WILLIAM A HOGG	2.14047	Prospector's Licence No. A-50344
Address 22 MAXOME AVE WILLOWDALE ONT. M2M 3J9		Telephone No. 416-221-7428
Work Performed By WILLIAM A HOGG		
Name and Address of Author (of Submission) 22 MAXOME AVE WILLOWDALE ONT M2M 3J9		Date When Work was Performed From: _____ To: _____ Day: _____ Mo: _____ Yr: _____ Day: _____ Mo: _____ Yr: _____

RECEIVED
 APR 8 1991
 SURVEY
 MINT FILES

All the work was performed on Mining Claim(s). Indicate no. of days performed on each claim. *See Note No. 1 on reverse side				Mining Claim S1017435	No. of Days 78	Mining Claim	No. of Days	Mining Claim	No. of Days	Mining Claim	No. of Days
Mining Claim	No. of Days	Mining Claim	No. of Days	Mining Claim	No. of Days	Mining Claim	No. of Days	Mining Claim	No. of Days	Mining Claim	No. of Days
Mining Claim	No. of Days	Mining Claim	No. of Days	Mining Claim	No. of Days	Mining Claim	No. of Days	Mining Claim	No. of Days	Mining Claim	No. of Days

Instructions Total days credits may be distributed at claim holder's choice. Enter number of days credits per claim in the expenditure days credit column (below).	Calculation of Expenditure Days Credits Total Expenditures \$ 1177.00	Total Number of Mining Claims Covered by this Report of Work 78
--	--	---

Mining Claims (List in numerical sequence). If space is insufficient, attach schedules with required information

Mining Claim Prefix	Mining Claim Number	Expend. Days Cr.	Mining Claim Prefix	Mining Claim Number	Expend. Days Cr.	Mining Claim Prefix	Mining Claim Number	Expend. Days Cr.	Mining Claim Prefix	Mining Claim Number	Expend. Days Cr.
S	1017438	26	21	} maximum							
S	1017436	26	21								
S	1017435	26	21								

RECEIVED
 SEP 24 1991
 MINING LANDS SECTION

Total Number of Days Performed 78	Total Number of Days Claimed 78 63	Total Number of Days to be Claimed at a Future Date _____
---	--	--

Certification of Beneficial Interest *See Note No. 2 on reverse side

I hereby certify that, at the time the work was performed, the claims covered in this report of work were recorded in the current recorded holder's name or held under a beneficial interest by the current recorded holder.

Date: **April 12/91** Recorded Holder or Agent (Signature): **William A. Hogg**

Certification Verifying Report of Work

I hereby certify that I have a personal and intimate knowledge of the facts set forth in the Report of Work annexed hereto, having performed the work or witnessed same during and/or after its completion and the annexed report is true.

Name and Address of Person Certifying
WILLIAM A. HOGG 22 MAXOME AVE. WILLOWDALE, ONT. M2M 3J9

Telephone No: **416-221-7428** Date: **April 12/91** Certified By (Signature): **William A. Hogg**

For Office Use Only

Total Days Cr. Recorded 78	Date Recorded April 12/91	Mining Recorder Robert Bailey
63	Date Approved as Recorded SEPT. 25/91	Provincial Manager, Mining Lands Ross C. Goshinski

Received Stamp

RECEIVED

P. H. K. B.

Chemex Labs Ltd.

Analytical Chemists * Geochemists * Registered Assayers
212 Brooksbank Ave., North Vancouver
British Columbia, Canada V7J 2C1
PHONE: 604-984-0221

To: HOGG, WILLIAM A.

**

12 MAXOME AVE.
WILLOWDALE, ON
M2M 3J9

2.14047

INVOICE NUMBER

19110403 ✓

BILLING INFORMATION

Date: 7-FEB-91
Project:
P.O. No.:
Account: IPN

Comments:

Billing: For analysis performed on
Certificate A9110403

Terms: Payment due on receipt of invoice
1.5% per month (18% per annum)
charged on overdue accounts

Please Remit Payments to:

CHEMEX LABS LTD.
212 Brooksbank Ave.,
North Vancouver, B.C.
Canada V7J-2C1

CHEMEX CODE	ANALYSIS DESCRIPTION	SAMPLES ANALYSED	UNIT PRICE	AMOUNT
378 G24	SiO2 fusion G-24 24 EL. ICP	40	23.50	940.00
Sample preparation and other charges.				
208	- Assay - RING	40	1.75	70.00
294	- Crush and split	40	2.25	90.00

Total Cost \$ 1100.00
(Reg# R100938885) GST \$ 77.00

TOTAL PAYABLE (CDN) \$ 1177.00

RECEIVED

APR 12 1991

MINING LANDS SECTION

PAID

March 18, 1991

Kuana Kunkla



Chemex Labs Ltd.

Analytical Chemists * Geochemists * Registered Assayers
212 Brooksbank Ave., North Vancouver
British Columbia, Canada V7J 2C1
PHONE: 604-984-0221

To: HOGG, WILLIAM A.

**

22 MAXOME AVE.
WILLOWDALE, ON
M2M 3J9

INVOICE NUMBER

I 9 1 1 0 4 0 3 ✓

BILLING INFORMATION

Date: 7-FEB-91
Project:
P.O. No.:
Account: IPN

Comments:

Billing: For analysis performed on
Certificate A9110403

Terms: Payment due on receipt of invoice
1.5% per month (18% per annum)
charged on overdue accounts

Please Remit Payments to:

CHEMEX LABS LTD.
212 Brooksbank Ave.,
North Vancouver, B.C.
Canada V7J-2C1

CHEMEX CODE	ANALYSIS DESCRIPTION	SAMPLES ANALYSED	UNIT PRICE	AMOUNT
378	- SiO2 % fusion			
G24	- G-24 24 EL. ICP	40 ✓	23.50	940.00
Sample preparation and other charges.				
208	- Assay - RING	40 ✓	1.75	70.00
294	- Crush and split	40 ✓	2.25	90.00
				Total Cost \$ 1100.00
(Reg# R100938885)				GST \$ 77.00
TOTAL PAYABLE (CDN) \$				1177.00

William A. Hogg, Ph.D., P.Eng.

CONSULTING GEOLOGIST

22 MAXOME AVENUE • WILLOWDALE, ONTARIO M2M 3J9 • (416) 221-7428

August 9, 1991

Mining ^{LANDS}~~Claims~~
159 Cedar Street, 4th Floor
Sudbury, Ontario
P3E 6A5

Attn. Clive Stephenson

RECEIVED

AUG 16 1991

MINING LANDS SECTION

Re. File 2 . 14047
Samples 643, 645, 647
McAuslan Township

As requested in your telephone call of August 7, 1991, here is a map showing the location of silica samples from McAuslan Township.

Yours very truly



William A. Hogg

RECEIVED

AUG 16 1991

MINING LANDS SECTION

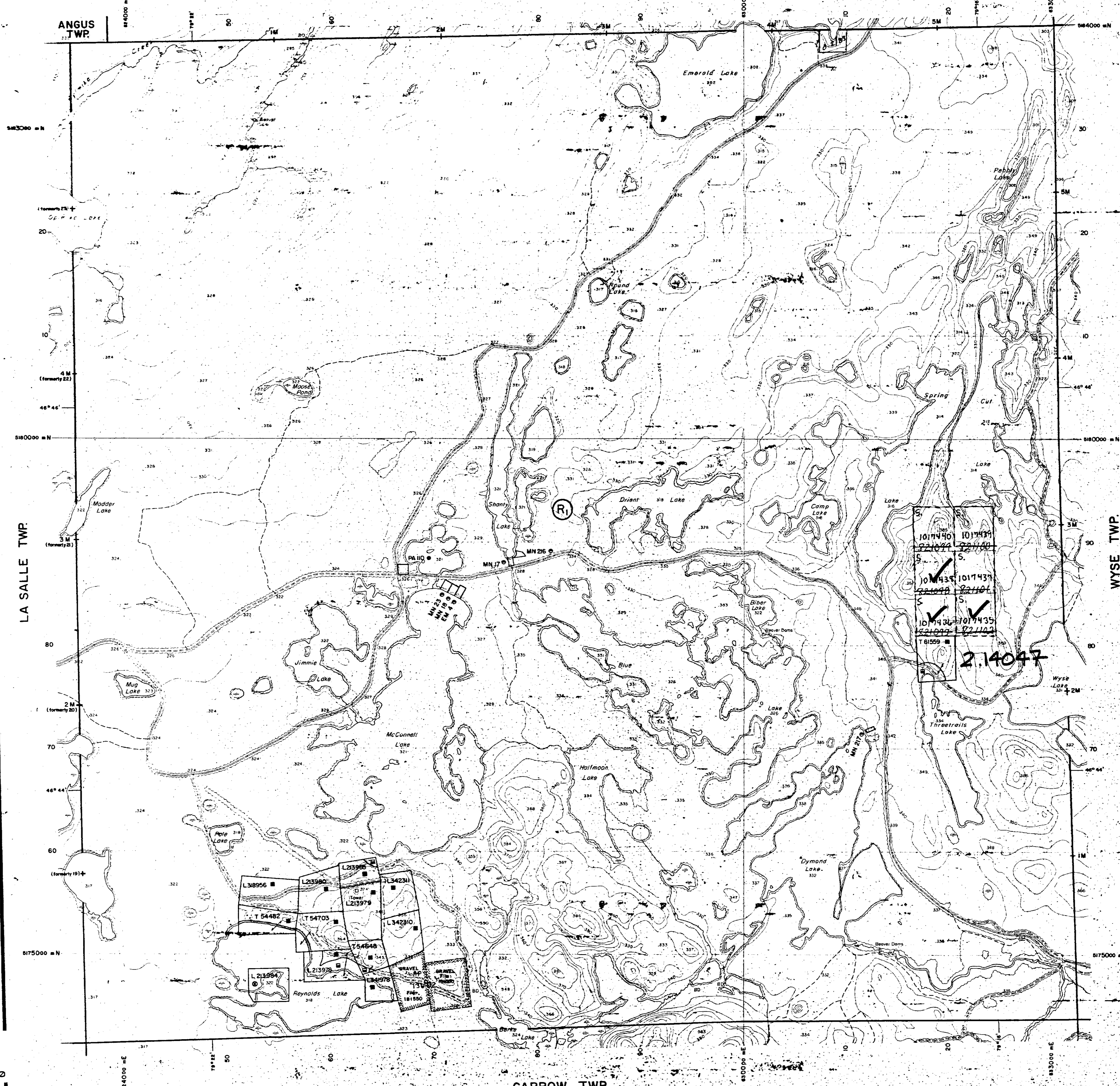
MAP SYMBOLOLOGY

Aerial Cowlancy --- --- --- --- --- --- --- --- --- --- --- ---	Pipeline (above ground) --- --- --- --- --- --- --- --- --- --- --- --- --- ---
Boundary --- --- --- --- --- --- --- --- --- --- --- --- ---	Railroad Single Track --- --- --- --- --- --- --- --- --- --- --- --- ---
Water --- --- --- --- --- --- ---	Road --- --- --- --- --- --- --- --- --- --- --- ---
Other --- --- --- --- --- --- --- --- --- --- --- --- ---	Other --- --- --- --- --- --- --- --- --- --- --- --- ---

AREAS WITHDRAWN FROM DISPOSITION

M.R.O. - MINING RIGHTS ONLY				
S.R.O. - SURFACE RIGHTS ONLY				
M.+S. - MINING AND SURFACE RIGHTS				
Description	Order No.	Date	Disposition	File
SEC. 43 P.L.S.D. '70	W18/74	26/04/74	ENTIRE TWP. S.R.O.	180707 & 4

PARKMAN TWP.



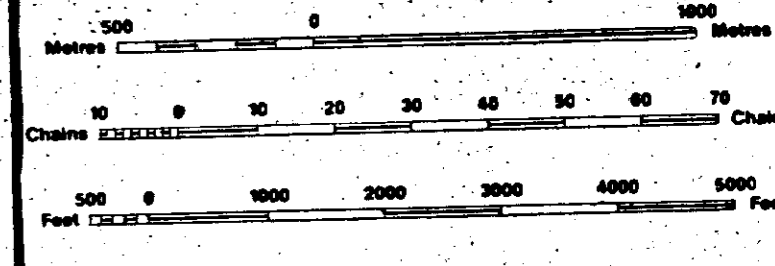
LEGEND

HIGHWAY AND ROUTE No.	---
OTHER ROADS	---
TRAILS	---
SURVEYED LINES	---
TOWNSHIPS, BASE LINES, ETC.	---
LOTS, MINING CLAIMS, PARCELS, ETC.	---
UNSURVEYED LINES	---
PARCEL BOUNDARY	---
MINING CLAIMS ETC.	---
RAILWAY AND RIGHT OF WAY	---
UTILITY LINES	---
NON-PERENNIAL STREAM	---
FLOODING OR FLOODING RIGHTS	---
SUBDIVISION OR COMPOSITE PLAN	---
RESERVATIONS	---
ORIGINAL SHORELINE	---
MARSH OR MUSKEG	---
MINES	---
TRAVERSE MONUMENT	---

DISPOSITION OF CROWN LANDS

TYPE OF DOCUMENT	SYMBOL
PATENT, SURFACE & MINING RIGHTS	●
SURFACE RIGHTS ONLY	○
MINING RIGHTS ONLY	○
LEASE, SURFACE & MINING RIGHTS	■
SURFACE RIGHTS ONLY	■
MINING RIGHTS ONLY	■
LICENCE OF OCCUPATION	○
ORDER-IN-COUNCIL	○
RESERVATION	○
CANCELLED	○
SAND & GRAVEL	○

NOTE: MINING RIGHTS IN PARCELS PATENTED PRIOR TO MAY 6, 1913, VESTED IN ORIGINAL PATENTEES BY THE PUBLIC LANDS ACT, R.S.O. 1970, CHAP. 390, SEC. 63, SUBSEC. 1.



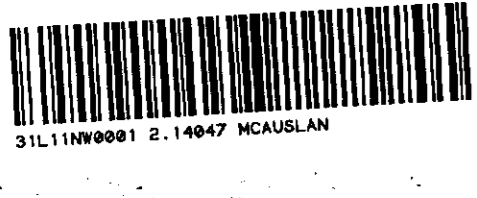
SCALE 1:20 000
GRID ZONE: 17

0.2/83 REOPENED FOR STAKING
83-08-03

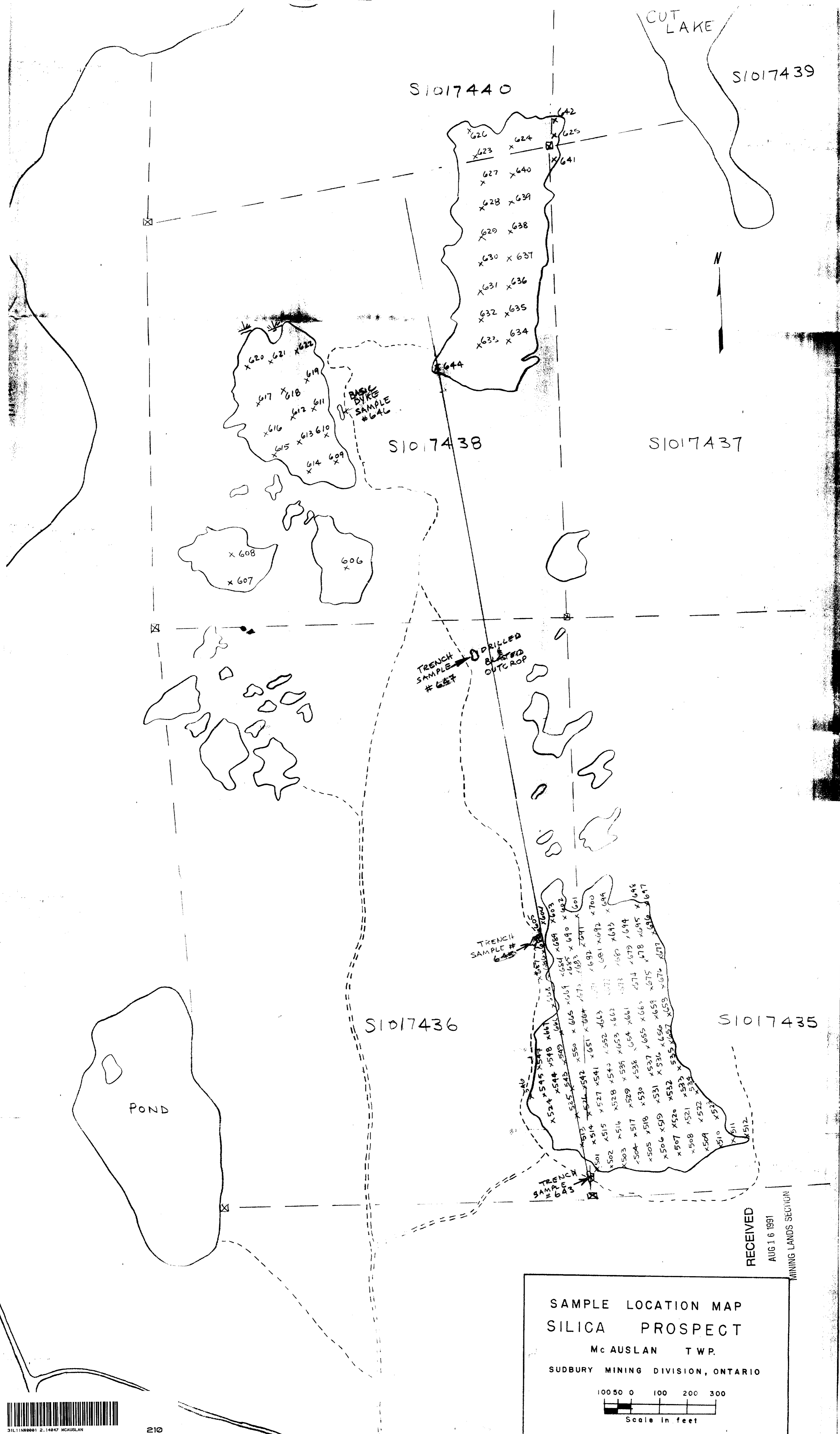
THE INFORMATION THAT APPEARS ON THIS MAP HAS BEEN COMPILED FROM VARIOUS SOURCES, AND ACCURACY IS NOT GUARANTEED. THOSE WISHING TO STAKE MINING CLAIMS SHOULD CONSULT WITH THE MINING RECORDER, DEPARTMENT OF NORTHERN DEVELOPMENT AND MINES, FOR ADDITIONAL INFORMATION ON THE STATUS OF THE LANDS SHOWN HEREON.

TOWNSHIP
MCAUSLAN
M.N.R. ADMINISTRATIVE DISTRICT
NORTH BAY
MINING DIVISION
SUDBURY
LAND TITLES / REGISTRY DIVISION
NIPISSING

Ontario Ministry of Natural Resources Land Management Branch
Original Compilation: NOV. 1984
Number: G-1630



GARROW TWP.



S1017440

S1017439

S1017438

S1017437

S1017436

S1017435

POND

TRENCH SAMPLE # 647
 DRILLED
 BLASTED
 OUTCROP

TRENCH SAMPLE # 648

TRENCH SAMPLE # 649

BASIC DYKE
 SAMPLE # 646

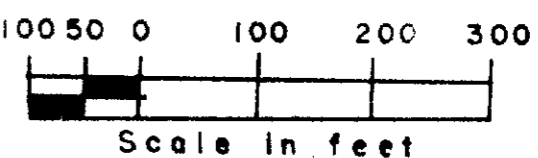
RECEIVED
 AUG 16 1991

MINING LANDS SECTION

SAMPLE LOCATION MAP
 SILICA PROSPECT

Mc AUSLAN TWP.

SUDBURY MINING DIVISION, ONTARIO



William C. Hoag