

This file contains work performed ^{on L.O. claims:} ~~by Foster Mining on claim~~

T # 53847	Hole # 1	November, 1963
(west T46500)	# 2	November, 1963
(west 558028)	# 3	November, 1963
	# 4	Nov.-December, 1963
	# 5	December, 1963



31L11SE0015 14 BUTLER

PROPERTY: FOSTER MINING CLAIMS.

HOLE NO. 3

LATITUDE : 31° 5' of 1-53847

BEARING: East astro.

DIP: 64° 00'

STARTED: Nov 22/63

COMPLETED: Nov 26/63.

DEPARTURE: 275' W of 1-53847

V.D. 90.3'

H.D. 43.6'

DRILLED BY: Inspiration Drilling Company

DEPTH: 101.5'

ELEVATION: —

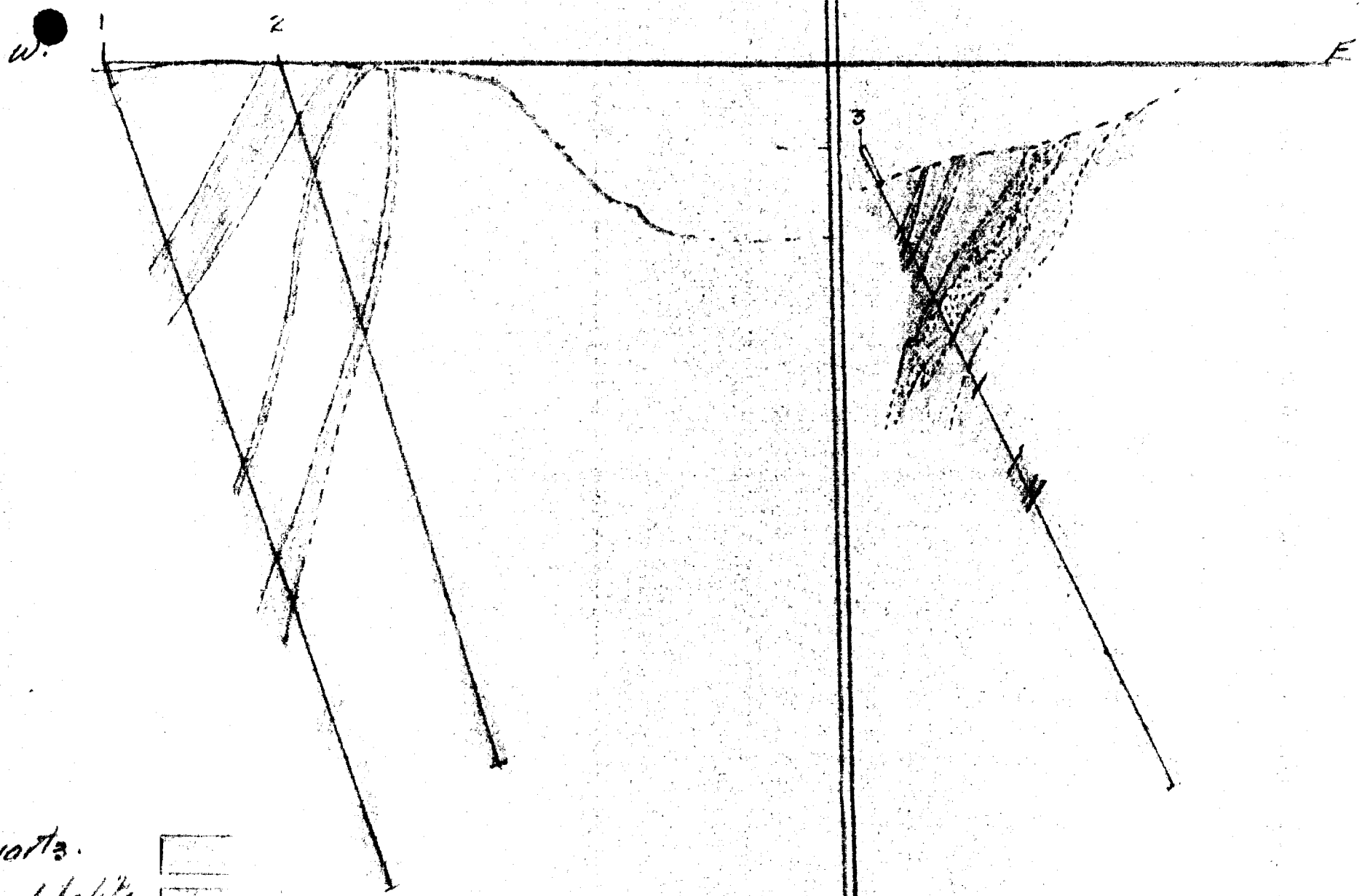
LOCATION: CROCAN LAKE - BUTLER TWP.


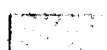
LOGGED BY: [Signature]

FOOTAGE	DESCRIPTION	SAMPLE FOOTAGES	SAMPLE No.	WIDTH FT.	ASSAY DATA			
0 - 13.0	Casios							
15.5 16.8	Quartz - Chalcocite strong - occas. cuprite							
16.8	Amphibolite massive							
19.3	Quartzite & Quartz w/ Chalcocite							
23.0	Amphibolite - schistose							
24.4	Quartzite - w/ Chalcocite							
30.0	Quartzose Amphibolite w/ Chalcoc.							
34.5	Quartz breccia - w/ Chalcoc.							
37.8	Amphibolite - massive							
38.0	Quartz veinlet - strong chalcocite							
50.0	Amphibolite - somewhat schistose							
54.8	Quartz streaks in Amphi. med. Chalcocite							
55.1	Amphibolite - massive							
55.3	Quartz veinlet - strong chalcocite							
101.5	Amphibole - massive with epidote & qtz strks. w/ Chalcocite							

B.H. Sect. 1-2

B.H. Sect. 3



Quartz. 
 Amphibolite 

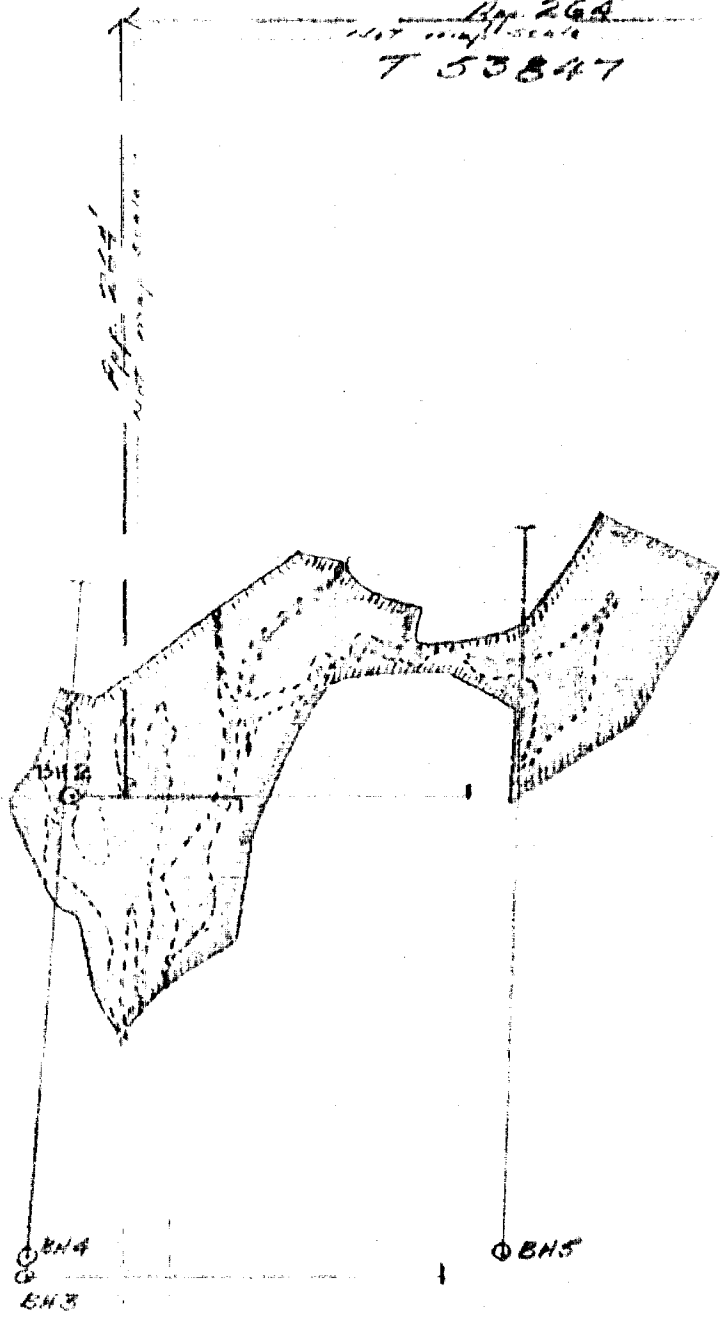
Profiles Drill Holes 1, 2, 3 - FOSTER, Clavis-Butler
Scale 20'-1"

Box 264
1/16" map scale
753847

N
75



BH1
⊙



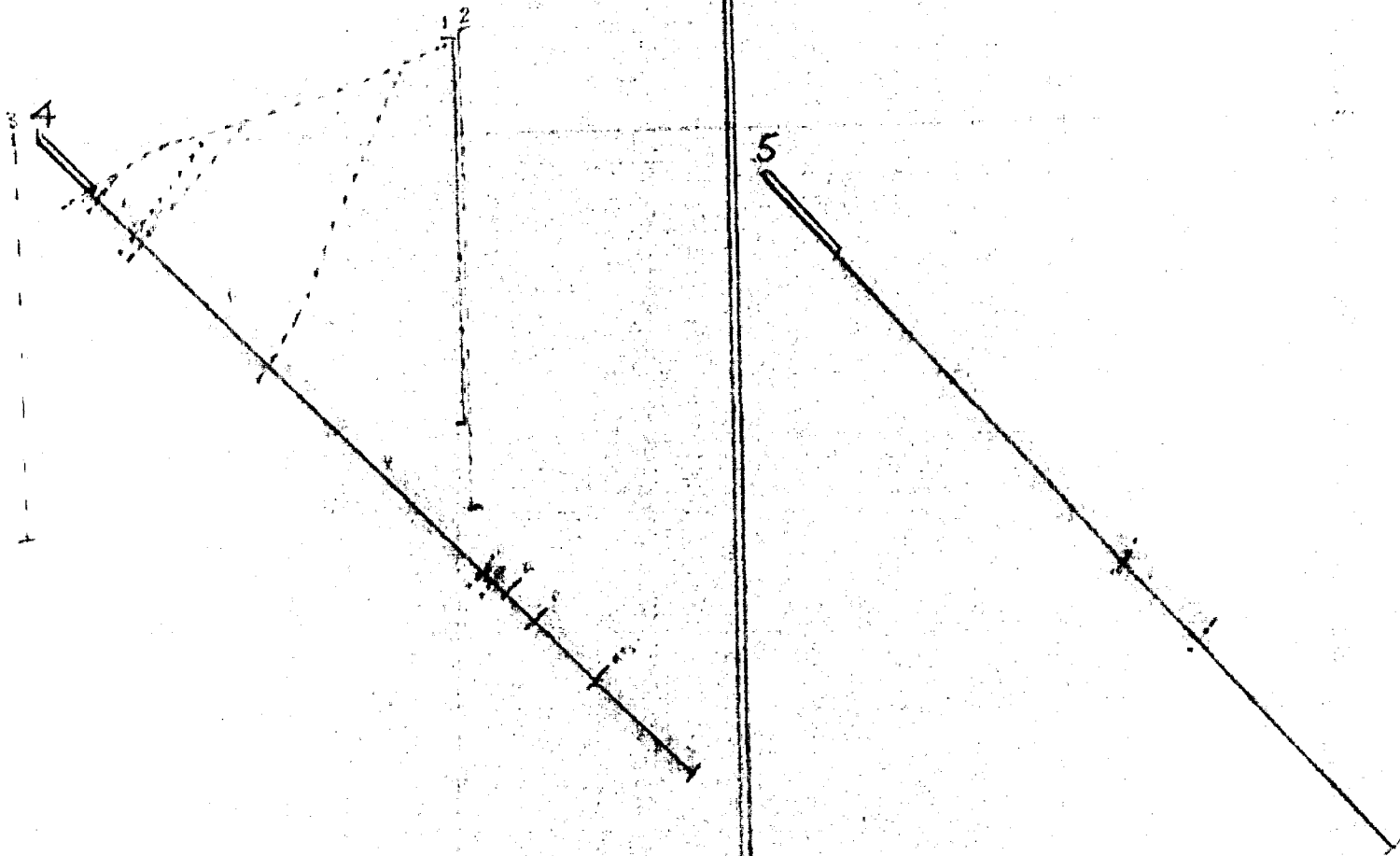
Location of Drill Holes
Drilled by Inspiration Drilling - Nov. & Dec. 1963
BUTLER TWP.
Scale 30'-1"

B.H. Sect. 4.

B.H. Sect. 5.

← S

N →



Quartz
Amphibolite



Profiles Drill Holes A & 5. Foster Census - Diller.


Scale 20' = 1"

PLAN showing location FOSTER CLAIMS

Top of BUTLER


Timiskaming Min. Div.


Location Chalcoite Deposit -


site of drill program. 

also Geology.

Legend.

Pyritized Para Gneiss 

Kyanite-Alcoa Gneiss 

Amphibolite Gneiss 

Scale 10" = 1"

