



31L13NW9732 40 BRIGGS

010

Diamond Drilling

Township of BRIGGS

Report N^o 40

Work performed by: Aladin Minerals Limited (C.M. Hames)

Claim N ^o	Hole N ^o	Footage	Date	Note
S 427491	A-1	195.0'	Aug/76	(1)
S 398740	B-1	306.0'	Sept/76	(1)

Notes:

(1) #116-76

Drill Core Log

Property ALADIN MIN. LTD

Hole No. A-1

Latitude 20° 75' N Bearing 135° Page 1

Departure 18° 50' W Dip -20°

Location S 427491 Length 195' Core Size EXT

Elevation _____ Started Aug 16/76 Completed Aug. 23/76

FROM	TO	FORMATION	SAMPLE NO.	LENGTH FT.		Py
0	+49.8	Volcanics - intermediate				3/100
32.5	48.0	MINOR PY Fractured ~ 5% py				
	38.5	40% py ~ 1.0 foot	B1930	39.0		
	40.5	10% py ~ 1.0 foot		-40.0	1.0ft	Trace
	47.0	15% py ~ 1.0 foot	B1931	46.5		
49.8	148.0	Volcanics - Acid		-47.5	1.0ft	Trace
		fragmental, sil., epidot.	B1932	107.5		
	107.0	py band 0.2'	B1933	-108.5	1.0ft	0.005
	107.5	py band 0.1'		147.0	1.0ft	Trace
	147.5	py band 0.6' 20% py	B1934	148.0		
148.0	148.0	Volcanics - Intermediate		176.8	0.3ft	Trace
		flows.		174.1		
170.4	195.0	Volcanics Acid				
		frequent				
	183.0	fault about 0.5'				
	174.0	py band 0.1' - 5% py				
	195.0	End of hole.				

% CORE RECOVERY

Drilled by International Mining Recovery & Explorations Logged by Tom Skidwell
Tom Skidwell

Drill Core Log

Property ALADIN MIN. LTD.

Hole No. B-1

Latitude 7+50N Bearing 315° Page 1

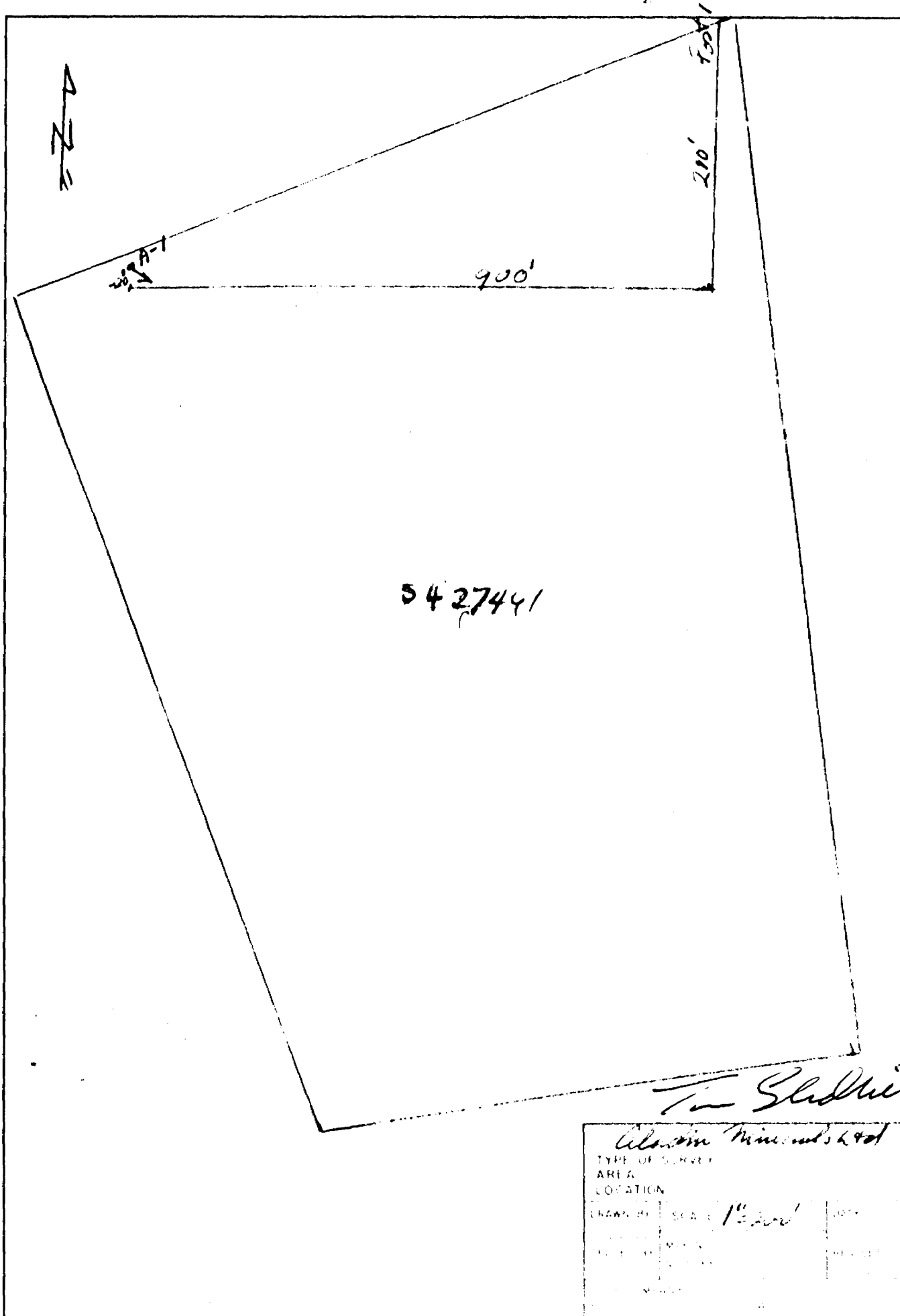
Departure 26 T00E Dip -45°

Location 9 348740 Length 306' Core Size EXT

Elevation _____ Started Sept 1/76 Completed Sept 20/76

FROM	TO	FORMATION	SAMPLE NO.	LENGTH FT.	% Cu	% Au	% Ag
0	142.0	VOLCANICS Intermediate vesicular, fractured					
128.3	129.5	Pink qtz., minor py & calcopyrite	A-2086	1.2'	0.08	Trace	
142.0	214.9	VOLCANICS basic					
152.4	155.0	Pink quartz vein	A2087	1.6'	0.05	Trace 0.03	
214.9	266.0	QUARTZ-DIORITE pink	A2088			0.01	
	223.5	Chaotic Sample					
266.0	283.0	VOLCANICS - Intermediate siliceous, pinkish					
283.0	306.0	VOLCANICS - Intermediate fractured.					
% CORE RECOVERY							

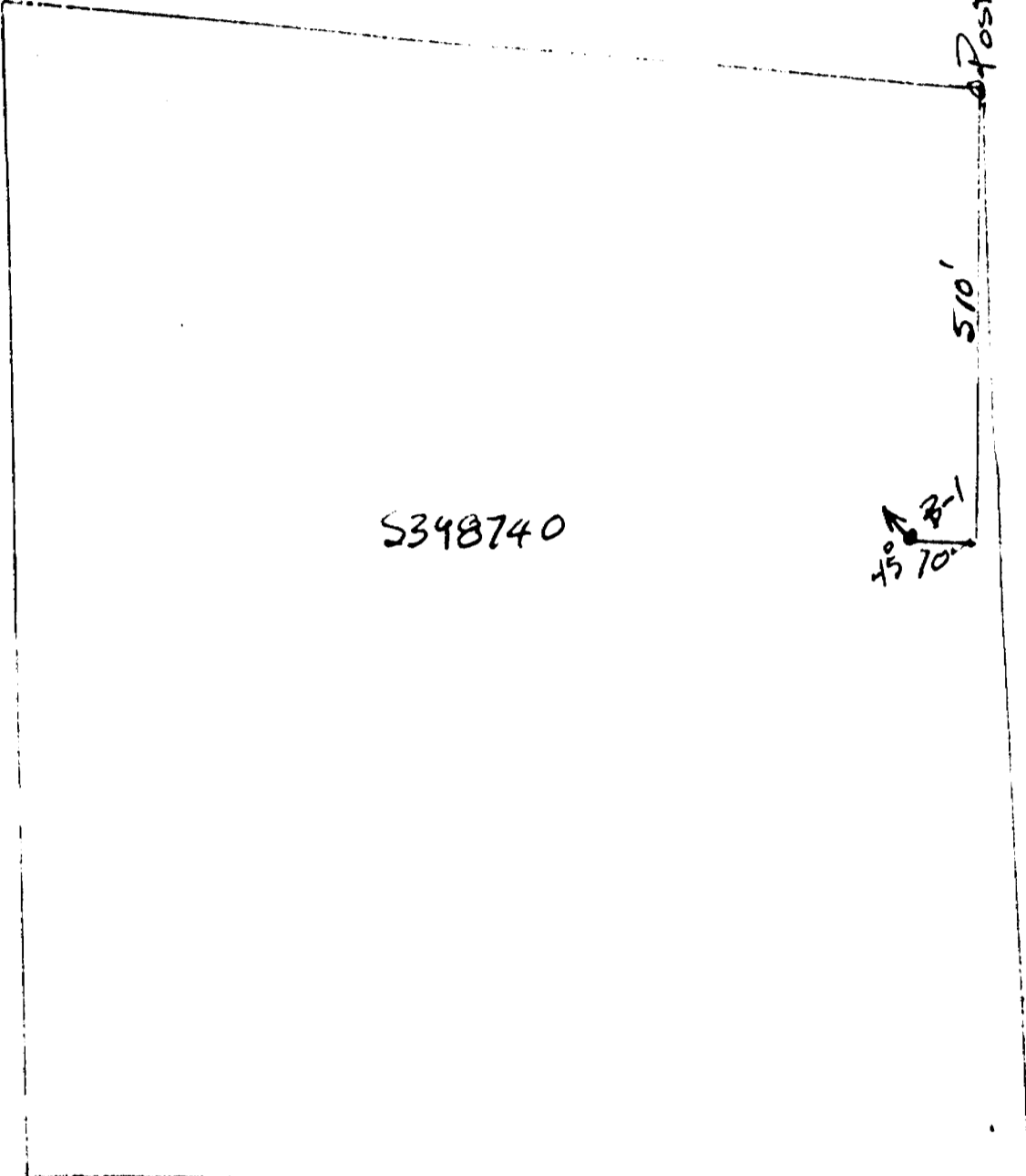
Drilled by International Mining & Recovery Corporation Logged by Tom Sedwell
Tom Sedwell



5427441

Tom Shedd

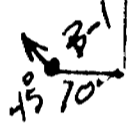
<i>Alaska Minerals 2901</i>	
TYPE OF SURVEY	
AREA	
LOCATION	
DRAWN BY	SCALE <i>1"=200'</i>
DATE	PROJECT
BY	REVISION
DATE	BY



S348740

510'

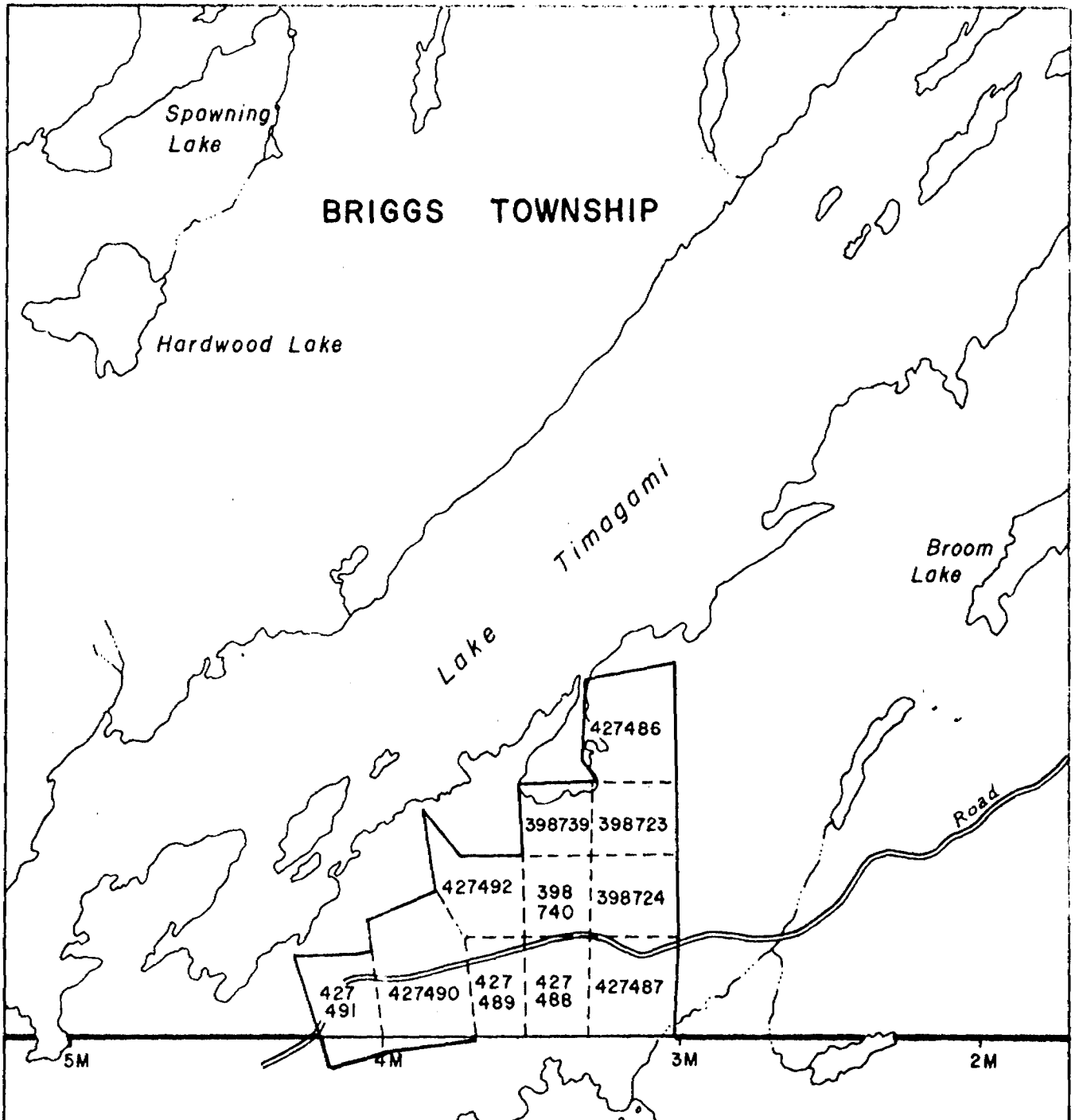
Post 1



Tom Skelton

Clackson Minerals Ltd.

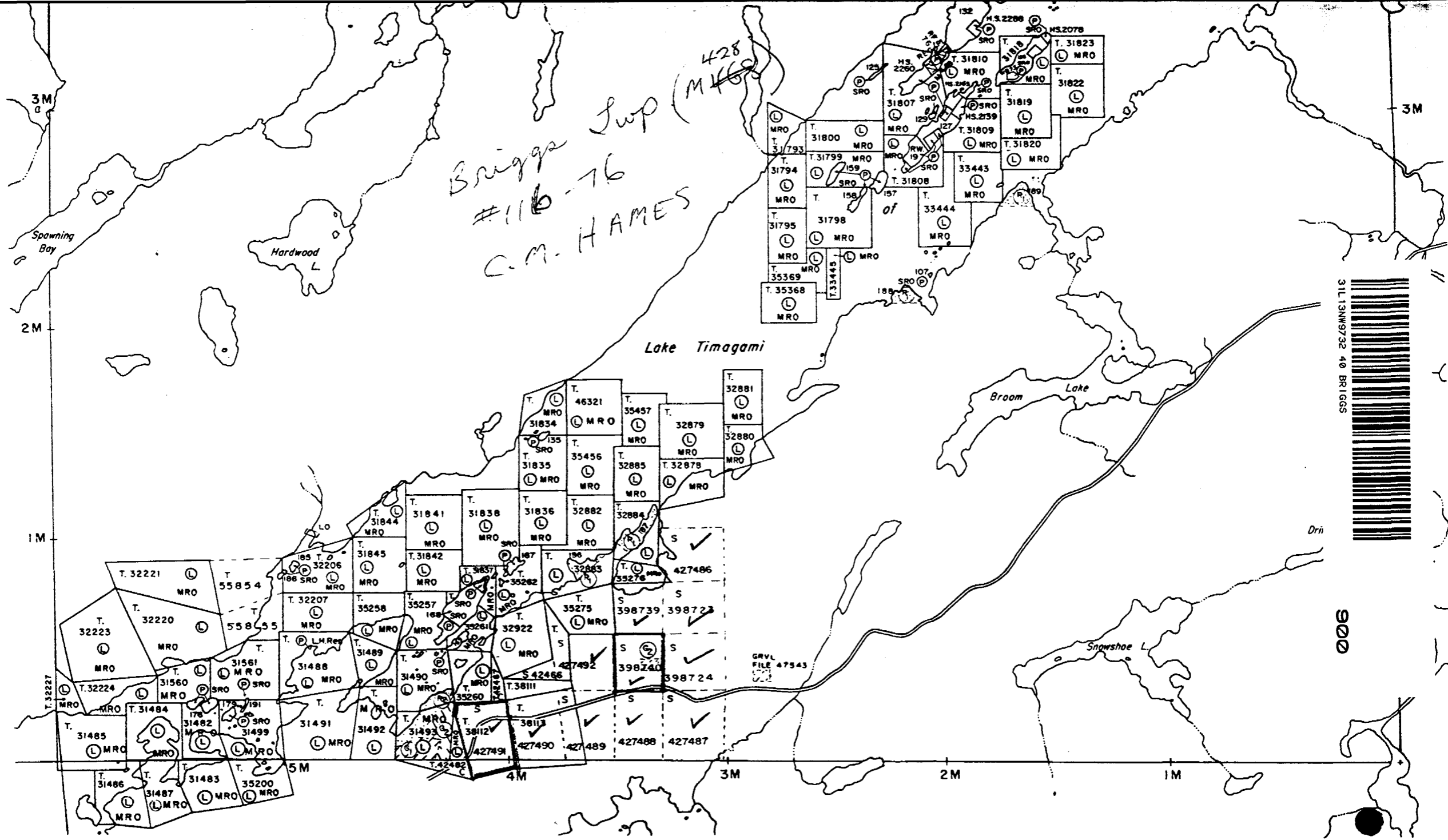
TYPE OF SURVEY		
AREA		
LOCATION		
DRAWN BY	SCALE 1" = 200'	DATE
MADE BY	REVISION	REVISION
TO ALL MEANS		DATE



Stedhill

ALADIN MINERALS LIMITED		
TYPE OF SURVEY CLAIMS LOCATION		
AREA BRIGGS TOWNSHIP		
LOCATION SUDBURY M.D., ONTARIO		
DRAWN BY	SCALE 1" = 2640'	DATE
<i>RM</i>		<i>28/8/75</i>
DRAWN BY	MAP NO. M.N.R.-M428	REVISED
	NTS REF. 31L-13	
TO ACCOMPANY	OSC REPORT	
BY <i>TRF</i>	DATE <i>28/8/75</i>	

JOAN TWP. M.



428
 Briggs Sup
 #116-76
 C.M. HAMES

YATES TWP. M.616



900

GRVL
 FILE 47543