



31L13SE0005 10 FLETT

010

Diamond Drilling

Township of FLETT

Report N^o 10

Work performed by: Murray, Reed et al

Claim N ^o	Hole N ^o	Footage	Date	Note
T 34542	1	41.0'	Feb/55	
T 34541	2	42.0'	Feb/55	
	11	52.0'	Mar/55	
	15	54.0'	Mar/55	
	16	50.0'	Mar/55	
	11-56	45.0'	Jan/56	
	12-56	60.0'	Jan/56	
	13-56	57.0'	Jan/56	
	14-56	42.0'	Jan/56	
	15-56	58.0'	Jan/56	
	16-56	54.0'	Jan/56	
	17-56	55.0'	Jan/56	
	18-56	56.0'	Jan/56	
	19-56	55.0'	Jan/56	
	20-56	57.0'	Jan/56	
	21-56	61.0'	Jan/56	
	22-56	60.0'	Jan/56	
	23-56	61.0'	Jan/56	
	101	60.0'	Mar/57	
	105	50.0'	Apr/57	
	106	72.0'	Apr/57	
	1-59)	125.0'		
	2-59)	140.0'		
	3-59)	130.0'	Rec'd Mar/59	
	4-59)	100.0'		
	5-59)	60.0'		
	B-5)	107.0'	Rec'd Mar/58	
	B-6)	640.0'		
T 34742	3	42.0'	Feb/55	

.....2

29

2486

Diamond Drilling

Township of FLETT (Cont'd)

Report NO

Work performed by:

Claim NO	Hole NO	Footage	Date	Note
T 34741	4	42.0'	Feb/55	
	5	42.0'	Feb/55	
	101	115.0'	Apr/57	
	130	80.0'	Apr/57	
	131	85.0'	Apr/57	
	132	83.0'	Apr/57	
	133	88.0'	Apr/57	
	134	110.0'	Apr/57	
	135	86.0'	Apr/57	
	136	84.0'	Apr/57	
	137	84.0'	Apr/57	
	138	80.0'	Apr/57	
	C-1	105.0'	Apr/57	
	C-2	100.0'	Apr/57	
	C-3	110.0'	Apr/57	
	C-4	100.0'	Apr/57	
	C-5	101.0'	Apr/57	
C-6	100.0'	Apr/57		
C-7	104.0'	Apr/57		
T 34549	6	40.0'	Feb/55	
	7	40.0'	Feb/55	
	8	40.0'	Mar/55	
T 34547	9	40.0'	Mar/55	
	10	47.0'	Mar/55	
	12	40.0'	Mar/55	
	13	50.0'	Mar/55	
	14	60.0'	Mar/55	
	103	98.0'	Apr/57	
	103A	32.0'	Apr/57	
	104	230.0'	Apr/57	
	B1)	110.0'		
	B2)	110.0'	rec'd Mar/58	
B3)	110.0'			
B4)	115.0'			

.....3

Diamond Drilling

Township of FLETT (Cont'd)

Report N^o

Work performed by:

Claim N ^o	Hole N ^o	Footage	Date	Note
T 34545	1	66.0'	Nov-Dec/55	
	2	68.0'	Nov-Dec/55	
	3	72.0'	Nov-Dec/55	
	3A	62.0'	Nov-Dec/55	
	4	68.0'	Nov-Dec/55	
	5	68.0'	Nov-Dec/55	
	6	73.0'	Nov-Dec/55	
	7	72.0'	Nov-Dec/55	
	8	70.0'	Nov-Dec/55	
	9	63.0'	Nov-Dec/55	
	10	50.0'	Nov-Dec/55	
T 34546	24	35.0'	Jan/56	
	25	34.0'	Jan/56	
	26	50.0'	Jan/56	
	27	48.6'	Jan/56	
	28	48.6'	Jan/56	
	29	43.0'	Jan/56	
	30	45.0'	Jan/56	
	31	46.0'	Jan/56	
	32	52.0'	Jan/56	
	33	54.0'	Jan/56	
	34	50.0'	Jan/56	
	35	66.0'	Jan/56	
	36	52.0'	Jan/56	
	37	49.0'	Jan/56	
	38	48.0'	Jan/56	
	A6	105.0'	Rec'd Mar/58	
	A7	86.0'	Rec'd Mar/58	

Notes:

.....4

26

69912

Diamond Drilling

Township of FLETT (Cont'd)

Report N^o

Work performed by:

Claim N ^o	Hole N ^o	Footage	Date	Note
T 34543	39	60.0'	Jan-Feb/56	
	40	62.0'	Jan-Feb/56	
	41	53.0'	Jan-Feb/56	
	42	61.0'	Jan-Feb/56	
	43	50.0'	Jan-Feb/56	
	44	51.0'	Jan-Feb/56	
	45	51.0'	Jan-Feb/56	
	46	53.0'	Jan-Feb/56	
T 35608	1	70.0'	Dec/56	
	2	68.0'	Dec/56	
	3	72.0'	Dec/56	
T 34540	1	85.0'	Jan/57	
	2	50.0'	Jan/57	
	146	51.0'	Apr/57	
	147	31.0'	Apr/57	
	148	45.0'	Apr/57	
T 34735	114	31.0'	Apr/57	
	115	42.0'	Apr/57	
	116	40.0'	Apr/57	
T 34728	117	60.0'	Apr/57	
	118	80.0'	Apr/57	
	119	63.0'	Apr/57	
	120	66.0'	Apr/57	
	121	57.0'	Apr/57	
	122	68.0'	Apr/57	
T 35602	140	42.0'	Apr/57	

Notes:

.....5

Diamond Drilling

Township of FLETT (Cont'd)

Report No

Work performed by:

Claim No	Hole No	Footage	Date	Note
T 35602	141	53.0'	Apr/57	
	142	30.0'	Apr/57	
	143	75.0'	Apr/57	
	144	75.0'	Apr/57	
	145	50.0'	Apr/57	
	150	75.0'	Apr/57	
	151	25.0'	Apr/57	
	152	41.0'	Apr/57	
	153	80.0'	Apr/57	
	154	80.0'	Apr/57	
	155	56.0'	Apr/57	
	156	85.0'	May/57	
	157	80.0'	May/57	
	158	83.0'	May/57	
159	81.0'	May/57		
T 42914	201	65.0'	Dec/57	
	202	70.0'	Dec/57	
	203	64.0'	Dec/57	
	204	66.0'	Dec/57	
	205	72.0'	Dec/57	
	206	73.0'	Dec/57	
	207	70.0'	Dec/57	
	208	66.0'	Dec/57	
	209	53.0'	Dec/57	
	210	41.0'	Dec/57	
T 49351	1	100.0'	Sept/61	
	2	100.0'	Sept/61	
	1	102.0'	Sept/61	
	2	104.0'	Sept/61	

Notes:

.....6

Diamond Drilling

Township of FLETT (Cont'd)

Report N^o

Work performed by:

Claim N ^o	Hole N ^o	Footage	Date	Note
T 34548	A-1	100.0'	Mar/58	
	A-2	76.0'	Mar/58	
	A-3	100.0'	Mar/58	
	A-4	104.0'	Mar/58	
	A-5	109.0'	Mar/58	

5

10957.2'

Notes:

Group 2.
Holes 9-10-12-13-14
1-16-15-2-1



Flett Township
TERRACAMING
READING DIVISION

T₀ No 1

T 34545

T 34542

T 35606

T₀ No 2

T₀ No 16

T 34540

T₀ No 11

T₀ No 15

T 34544

T 35607

T₀ No 14

T₀ No 10

T₀ No 9

T₀ No 13
T₀ No 12

T 34546

T 34547

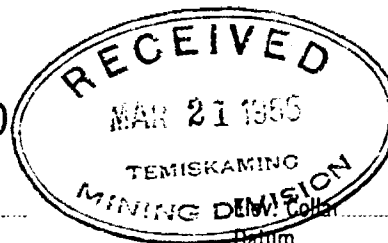
T 35608

SCALE - 4 INS = 20 Chns.

6.7 Morgan

4127

DIAMOND DRILL RECORD



Hole No. 1 to 7 Sheet No. 2

Property Flett Township
 Location 5 miles East of Kenny Siding O.N.R.
Temiskaming Mining Division
 Latitude _____
 Departure _____
 Bearing _____

Hole 1 - 35° SW
 " 2 35° SW
 " 3 30° SW
 " 4 35° SW
 " 5 40° SW
 " 6 29° SW
 Total Footage 289 Feet

Collar _____
 Datum _____
 Date Started Feb 13th - 1955
 Date Completed March 1st - 1955
 Drilled by J. Latawelle
 Logged by G.F. Morgan

	Footage		Formation	Sample Number	Sample Footage	Sample Width	Gold Sample	Gold Sludge	Remarks
	From	To							
Hole 1	0	25	Diabase + Granite banded - magnetite stringers	A1	10' to 25'	3/8" core			Practically all core magnetic
	25	41	Granite Hornblende every three to 4 inches.	A2		" "			
" 2	0	25	Diabase Hornblende admixture + magnetite	B3	7' to 25'	" "			
	25	42	Diabase, bands serpentine + magnetite stringers	B4	25' to 42'	" "			
" 3	0	25	Diabase magnetite banded	C5	0' to 25'	" "			
	25	42	" " " some banded serpentine	C6	25' to 42'	" "			
" 4	0	25	Diabase + Granite	D7	10' to 25'	" "			
	25	42	" " " with Serpentine bands.	D8	25' to 42'	" "			
" 5	0	25	Diabase Hornblende admixture magnetite	E9	12' to 25'	" "			
	25	42	" consistent with magnetite bands	E10	25' to 42'	" "			
" 6	0	25	Diabase magnetite banded in hybrid rocks	F11	0' to 15'	" "			
	25	40	" " " "	F12	25' to 40'	" "			
" 7	0	25	Diabase Granite banded	G13	12' to 25'	" "			
	25	40	" Greenstone + magnetite bands	G14	30' to 40'	" "			

Date of Examination Feb 28th - March 1st 1955

G.F. Morgan

DIAMOND DRILL RECORD



Hole No. 8 to 13 Sheet No. 3

Property: Flett Township
 Location: 5 miles East of Kenney Siding O.N.R.
Temiskaming Mining Division
 Latitude: _____
 Departure: _____
 Bearing: _____

Hole 8 - 25° SW Dip
 Hole 11 - 35° SW
 " 9 - 28° SW " 12 - 25° SW
 " 10 - 32° SW " 13 - 25° SW
 Total Footage 269 Feet

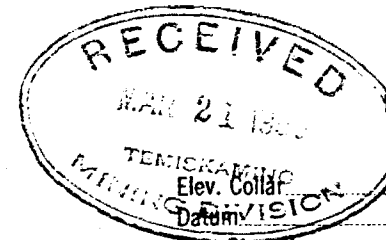
Elev. Collar: no Overburden
 Datum: _____
 Date Started: March 2nd - 1955
 Date Completed: April 6th - 1955
 Drilled by: J. Latourelle
 Logged by: G.F. Morgan

	Footage		Formation	Sample Number	Sample Footage	Sample Width	Gold Sample	Gold Sludge	Remarks
	From	To							
Hole 8	0	25	Diabase mass.	H 15	12' to 25'	7/8" core			Practically all core magnetic
	25	40	Diabase serpentine bands with magnetite	H 16	25' to 40'	" "			
" 9	0	25	Diabase Hornblende admixture	I 17	8' to 25'	" "			
	25	40	" Chlorite + altered diabase	I 18	30' to 40'	" "			
" 10	0	25	Diabase Hornblende admixture	J 19	12' to 25'	" "			
	25	47	" Greenstone banded every few inches	J 20	25' to 47'	" "			
" 11	0	25	Diabase Hornblende + magnetite bands	K 21	10' to 25'	" "			
	25	52	" + Hornblende to 40' - then diabase	K 22	25' to 52'	" "			
" 12	0	25	Diabase Greenite Gneiss banded.	L 23	10' to 25'	" "			
	25	40	Serpentine banded from 30' to 40'	L 24	25' to 40'	" "			
" 13	0	25	Hornblende to 18' then Diabase +	M 25	5' to 25'	" "			
	25	50	Bands of serpentine to 35' - then diabase with magnetite bands	M 26	25' to 50'	" "			

Date of Examination: March 6th - 1955

G.F. Morgan

DIAMOND DRILL RECORD



Hole No. 14 to 16 Sheet No. 1

Property Flett Township
 Location 5 miles East of Kenny siding O.N.R. Timiskaming Mining Division
 Latitude _____
 Departure _____
 Bearing _____

Dip

Hole 14 - 25° SW
 Hole 15 - 25° SW
 Hole 16 - 30° SW
 Total Footage 164 feet

No Overburden
 Date Started March 7th - 1955
 Date Completed March 9th - 1955
 Drilled by J. Latourelle
 Logged by G. F. Morgan

	Footage		Formation	Sample Number	Sample Footage	Sample Width	Gold Sample	Gold Sludge	Remarks
	From	To							
Hole 14	0	25	Hornblende Diabase banded Diabase Greenstone banded to 50' then Diabase + Magnetite bands	N27	10' to 25'	3/8" core			Practically all core Magnetite
	25	60		N28	30' to 60'	" "			
Hole 15	0	25	Diabase and Magnetite banded " " " "	O29	5' to 25'	" "			
	25	54		O30	25' to 54'	" "			
Hole 16	0	25	0' to 6' decomposed - Magnetite bands in Diabase to 50'	P31	0' to 15'	" "			
	25	50		P32	25' to 50'	" "			

Date of Examination March 9th - 1955

G. F. Morgan

34796

34795

34790

34792

34791

34789

34798

34786

34552

34551

34800

34553

34544

34799

34554

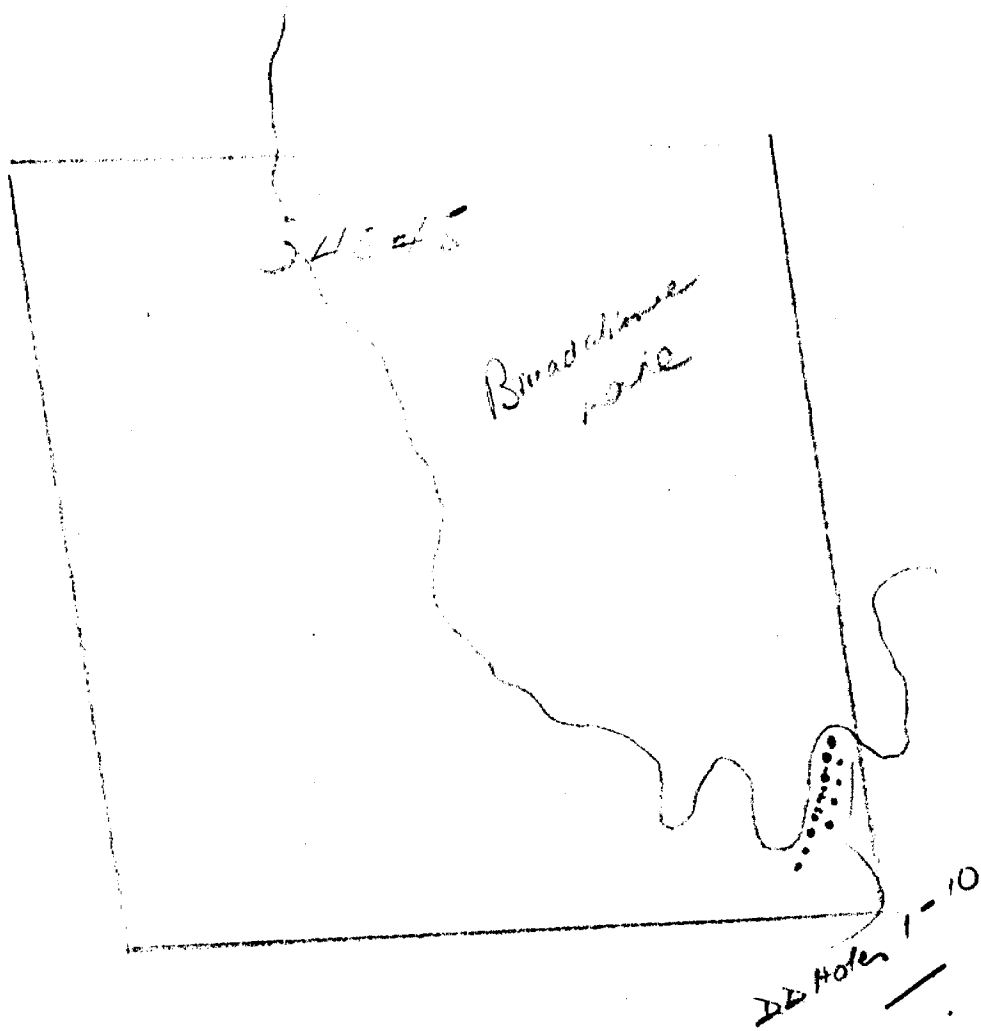
34545

Breadalbane
Lake

34729

34730

Sheet #1
Sketch attach
with group #1



Flett Twp.

T 34545



DIAMOND DRILL RECORD

Hole No. 1 to 10 Sheet No. 1

-56

Property Flett Township
 Location 5 miles east of Kenny, O.N.R.
Nipissing District, Timiskaming Mining Division

Latitude _____
 Departure N. of #2 post start 300 ft and 15 ft
 Bearing West of Line Claim # T34545
South east of Breadalbane Lake

Hole #	Dip
#1-	Vertical
2	85 east
3	65 N.E
3 A-	Vertical
4	Vertical
5 -	Vertical
Total Footage	732

Elev. Collar _____
 Datum _____
 Date Started November 26th-55
 Date Completed December 24th,-55
 Drilled by O.Carron and H.Budery + Wm Hargrave
 Logged by L.H.Reed

36
#4
5
6
7
8
9
10

Footage		Formation	Sample Number	Sample Footage	Sample Width	Gold Sample	Gold Sludge	Remarks
From	To							
0	66	Diabase, Hornblend, scatered pyrite, with greenstone bands also some diorite intrusion						Very little Magnetite
0	68	do as above						Do
0	72	do- with bands of chloride, and fine veinlets of quartz, fine grains of pyrite						Formation more compact 70 to 72 and harder to drill
0	62	Diorite, with bleds of greenstone scatered throughout all cores from 5 to 7 inclusive						Very little in Magnetite
0	68	also with odd stringers of very fine quartz stained pale green		70 N 10 E vertical				Appears to be in a fault zone
0	73	Diorite with a few odd band slightly magnetic		Vertical				Do
0	70	do Trying to get under lake		85 W				Do
0	63	do"		Vertical				
0	50							
<p>Note: Core from all holes drilled have been shipped to C.I. Murray properly marked showing Hole Number and depth of core taken.</p>								
<p>This drilling has been done along a fault zone between Breadalbane lake and McDiarmid Lake Apprxⁿ direction of fault N.E. to S.W.</p>								

Date of Examination January 3rd, 1956

L.H. Reed

SCALE

1" = 20 CHAINS

T 34545
34540

T 34542
34541

#11 - 75° W =

#12 - 85° S
13 - 60° S.E
14 - 65° E

#15 - 70° W
#16 - 35° S.W

20 - 85° W
21 - 90°
22 - 90°

23 - 65° W

18 - 70° W
19 - 75°
17 - 65°

34547

85° W ← 240

34546

DEF.	#	ANGLE
...	25	85° W
...	26	85° E
...	27	85° "
...	28	70° "
...	29	65° "
...	30	60° "

#	31 - 65° E
	32 - 75° "
	33 - 65° "
	34 - 75° "
	35 - 75° E
	36 - 75° E
	37 - 75° E
	38 - 90°

34549

McCormick Lake

34728

34735

34736

34548



DIAMOND DRILL RECORD

Hole No. 11 to 23 Sheet No. 2
-56

Property Flett Township
 Location 5 miles N.E. of Kenny O.N.R.
Nipissing Dist., Timiskaming mining
Division
 Latitude _____
 Departure East of N.S. line on claim # T 34541
 Bearing and south of east W line same claim

		Dip	
#11-	85 W	#17-	90
12	90	18-	90
13	85 S	19-	65 W
14-	85 W	20-	85 W
15-	85 W	21	85 W
16-	90	22-	90
Total Footage	721	23-	65 W

Elev. Collar _____
 Datum Jan 3 To 8 - Jim Byers
 Date Started Jan 8th 56
 Date Completed Jan 16th, 1956
 Drilled by J. Barber and E. Barber Jim Byers
 Logged by L.W. Reed

13

Footage		Formation	Sample Number	Sample Footage	Sample Width	Gold Sample	Gold Sludge	Remarks
From	To							
0	45	Diorite and hybrid rock						appear off contact
0	60	Diabase, and hornblend, structure more heavy than usual						magnetic
0	57	do as # 12 With more pyrite and more visible magnetite						do
0	42	do with little veins ranging from 2 to 6"						part of core very strong magnetite, and unknown color material shipped to Toronto for indentification same in every hole to #23
0	58	Do ² also some very strong magnetite with unidentified material						Very green
0	54	#####						
0	55	#####						
0	56	#####						
0	58	#####						
0	57	#####						
0	61	#####						
0	60	#####						
0	61	#####						
<p>General remark : could be an ore body existing in this area Conforming writer opinion, as the core from #12 to 23 has a stronger magnetic attraction, and probably be an off shoot or part of probable strong mineral concentration . Dip Needle over area on the islands and to the north east where McDiarmid lake emptye into Broadalbane has the same reaction, readings 90 on vertical scale</p>								
<p>samples of All core up to 23 hole was shipped to C.I. Murray Toronto</p>								

Date of Examination January 16th, 1956

L. W. Reed

DIAMOND DRILL RECORD

Hole No. 24 to 38 Sheet No. 1

Property Flett Township
 Location 5 Miles N.E. of Kenny O.N.R.
Nipissing District Temiskaming
Mining Division
 Latitude _____
 Departure West shore of McDiarmid Lake 34540 and
 Bearing and south east of claim 34546 and south east
Bay of McDiarmid Lake

Dip	
# 24 -- 85 deg ⁿ	# 30 - 60 Deg ⁿ
25 -- 85	31 - 65
26 - 85	32 - 75
27 - 70	33 - 65
28 - 65	34 - 75
29 - 65	35 - 75 (#36 - 75 Deg ⁿ)
Total Footage <u>721</u>	37 - 75
	38 - 90

Elev. Collar _____
 Datum _____
 Date Started January 15th 1956
 Date Completed January 26th, 1956
 Drilled by J. Barber - Bob Barber - Jim Buyers
 Logged by L.W. Reed

FLETT TWP

Footage		Formation	Sample Number	Sample Footage	Sample Width	Gold Sample	Gold Sludge	Remarks
From	To							
0	35	Diorite with some crystal of hornblend No visible Mineral						Very hard
0	34	" " " " " and some diabase						
		at 20 to 34 bands varying from $\frac{1}{8}$ to $\frac{1}{2}$ inc strongly Magnetic						
0	50	0 to 25 Diabase with quartz intrusion and 25 to 50 formation appears to change with some greenstone intrusion and magnetic bands, and less quartz						Fairly magnetic
0	48.5	Diabase with fine desiminated quartz also some blueish coloring associated with fine sulphides, and magnetite						Magnetite, and sulphides
0	48.6	0 to 29 Diabase with scatered veinlets through out of magnetite- 29 to 48.6 formation changes to a greenish substance (possibly a greenston impergnated bleeds of sulphides and very stong in magnetite showing in fine veinlets						Strongly magnetic
0	43	0 to 15 Diabase, hornblend faitly magnetic and from 15 to 43 diabase with bands of sulphides, and magnetite						" " "
0	45	0 to 28.6 Diabase with inclusion of (Greenstone) scattered sulphides and small bands of Magnetite						Fairly magnetic through
		28.6 to 45 more diabase and sulphides with magnetite						
0	46	Diabase with intrusion of greenstone with stringers of quartz no minerals visible						
0	52	0 to 40 diabase, hornblend, 40 to 52 greenish material with bands of Magnetite						" " "
0	54	Diabase with bands of bluish and purple scattered sulphides very magnetic						Very Magnetic
0	50	" " " " " " "						" "
0	66	" " less bands of bluish more scattered bands of magnetite						" "
0	52	Diabase with incline bands of Greenish coloring with bands of magnetite with scaterd decomposed bleeds of quartz						" "
0	49	Do " "						
0	48	Diabase with much scattered decomposed quartz and bands of magnetite						

(samples from all holes shipped to Toronto To C.L.Murray)
 for testing purpose

Date of Examination Jan 26 and 27th 1956

L. W. Reed

Sketch
attached with
Group #1.
Group #4

34795		
34788	34794	
34787	34793	
34550	34807	34835
34543	34808	34834

BREADALBANE
LAKE

SCALE 4" = 20 CHAINS

BREDALBANE LAKE

(441#)

(GROUP #4 RED)

46
45
44
43
42
41
40
39
DEG 83
90
90
90
90
90
90
90

WP

34544

T 34543

(GROUP #1 BLUE)

FT	DEG	FT
50	90	
63	85	70
70	90	8
77	90	8
84	76N18	7
91	90	6
98	90	5
105	90	4
112	85	3
119	90	2

CREEK

T 34545

34540

34542

34541

Claims marked in Blue on Main Map are for group #1 18 claims for which 732 ft of drilling was completed on claim T 34545

Claims marked in Red are of group #4, work drilling was completed on claim T 34543

441 #

Flett Twp.
T 34543



DIAMOND DRILL RECORD

#122
46
Hole No. 39 to 44 Sheet No. 4

Property Flett Township
Location SMILE N.E. KENNY ONT
Temiskaming District
Temiskaming Mining Division
Latitude _____
Departure East Shore line Breadalbane Lake
Bearing on claim # 34543

Dip } #45-90°
85° }
90° } #46-83°
80° }
90° }
90° }
90° }
Total Footage 441'

Elev. Collar _____
Datum _____
Date Started January 26th 1956
Date Completed February 3rd - 56
Drilled by Jack Barber, Bob Barber &
Logged by Leo Reed (Jim Byers)

Footage		Formation	Sample Number	Sample Footage	Sample Width	Gold Sample	Gold Sludge	Remarks
From	To							
0'	60'	HYBRID GRANITE						
0'	62'	" "						nothing visible
0'	53'	Altered greenstone						
0'	61'	Red granite (conglomerate)						
0'	50'	Altered greenstone						
0'	51'	Diabase Hornblend with scattered crystals of magnetite						very little magnetic
0'	51'	DIABASE (ALTERED) Hornblend						
0'	53'	do						This section appears to be in some form of contact

Core sample from all holes shipped to C. H. Murray at Toronto.

Date of Examination February 4th 1956

Leo Reed

34541

35609

3560

McDIARMID LAKE

#3 55° NE = 72 FT
#1 90° - 70 FT
#2 CLOSE - 68 FT

34547

35608

FLETT TWP.
Timbering Bureau
Division.

Dec 9/56.

L. Flett.

Scale approx 264' = 1"

135623 2107

DIAMOND DRILL RECORD

Hole No. 1, 2, 3. Sheet No. 1

Property E. L. Inman
 Location T. 11th Twp. T. 11th Range
Mining Division East of
one adjoined lake
 Latitude _____
 Departure 400' E of Post #3 = 35608 and
 Bearing 90° E. and N.E. 200' N

DDH 1 - 90° Dip 90°
 2 - 68° Dip 60° E
 3 - 72° Dip 55° N.E.
 Total Footage 210

Elev. Collar _____
 Datum _____
 Date Started Dec 3/56
 Date Completed Dec 5/56
 Drilled by Carl Hagland
 Logged by Leo Reed

Footage	Formation		Sample Number	Sample Footage	Sample Width	Gold Sample	Gold Sludge	Remarks
	From	To						
1 -	0	2	1	18 to 19.82	8 1/2"			Note
	2	42	2	31.6 to 32.12	8 1/2"			
	42	70	3	42.2 to 42.42	7 1/2"			
			4	45 to 45.5	5"			
			5	48.2 to 48.5	3"			
			6	49 to 49.3	3"			
2	0	68						All samples are being sent to Dr. W. B. Bony at Harlebury
			A2	60 to 60.3	3"			
			A3	61 to 61.1	1"			
3	0	72						Diabase qtz intrusion in block found with odd pieces of carbonate - no mineral visible

Date of Examination Dec 7/56

L. W. Reed

34554

23
14

SCALE
220' = 1" INCH

Breakabone
Lake

CREEK

ODH #2 - 90° 50 ft
ODH #1 - 90° 85 ft

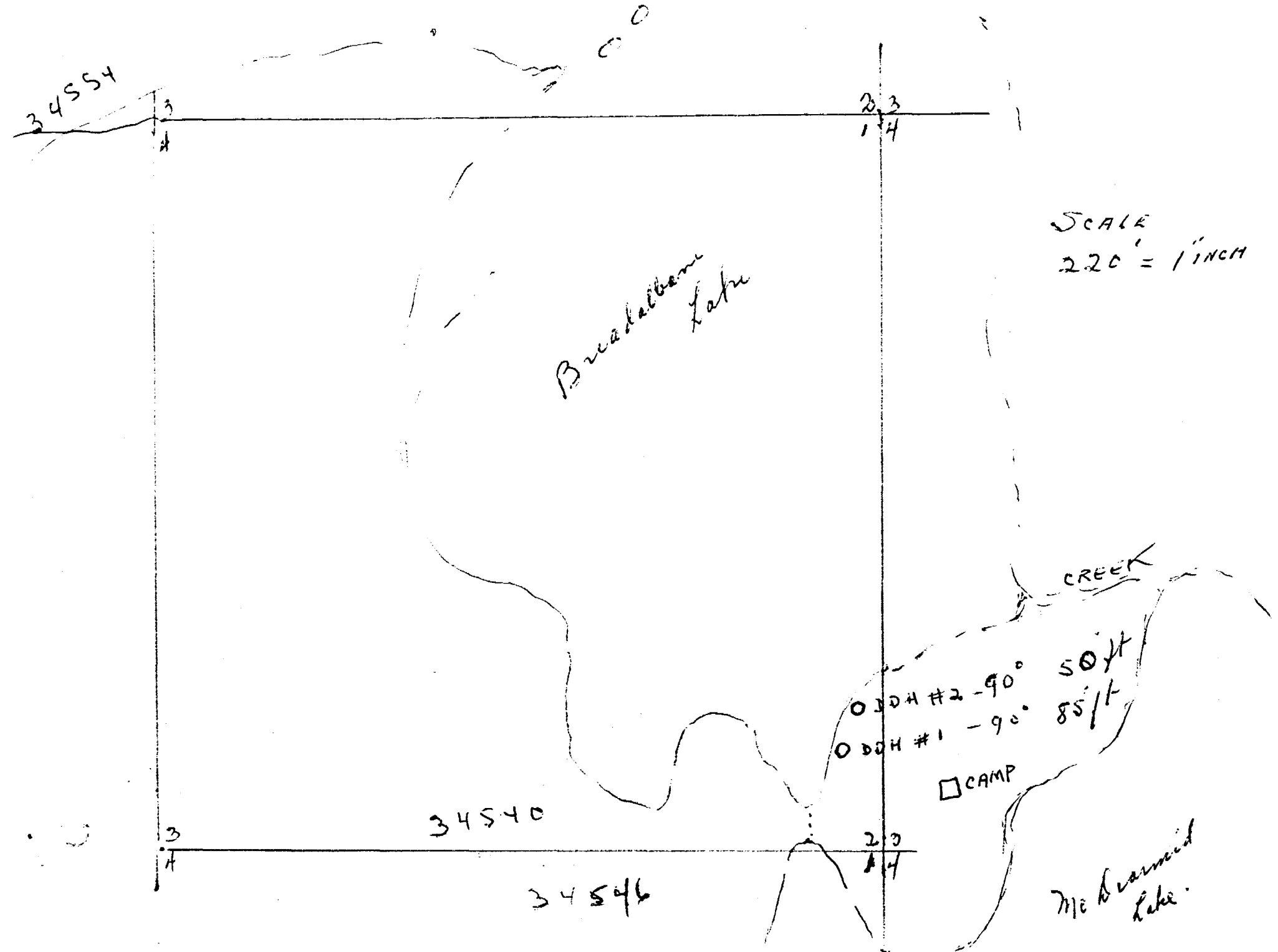
□ CAMP

34540

23
14

34546

Mc Dermitt
Lake



DIAMOND DRILL RECORD

Hole No. 1-2 Sheet No. #1

Property Flett Trwp
 Location One Pierced Lake & Precambrian Lake
Transboundary Mining Division
Claim 34540

# 1 =	90° ^B	95'
# 2 =	90°	50'
Total Footage		135 ft

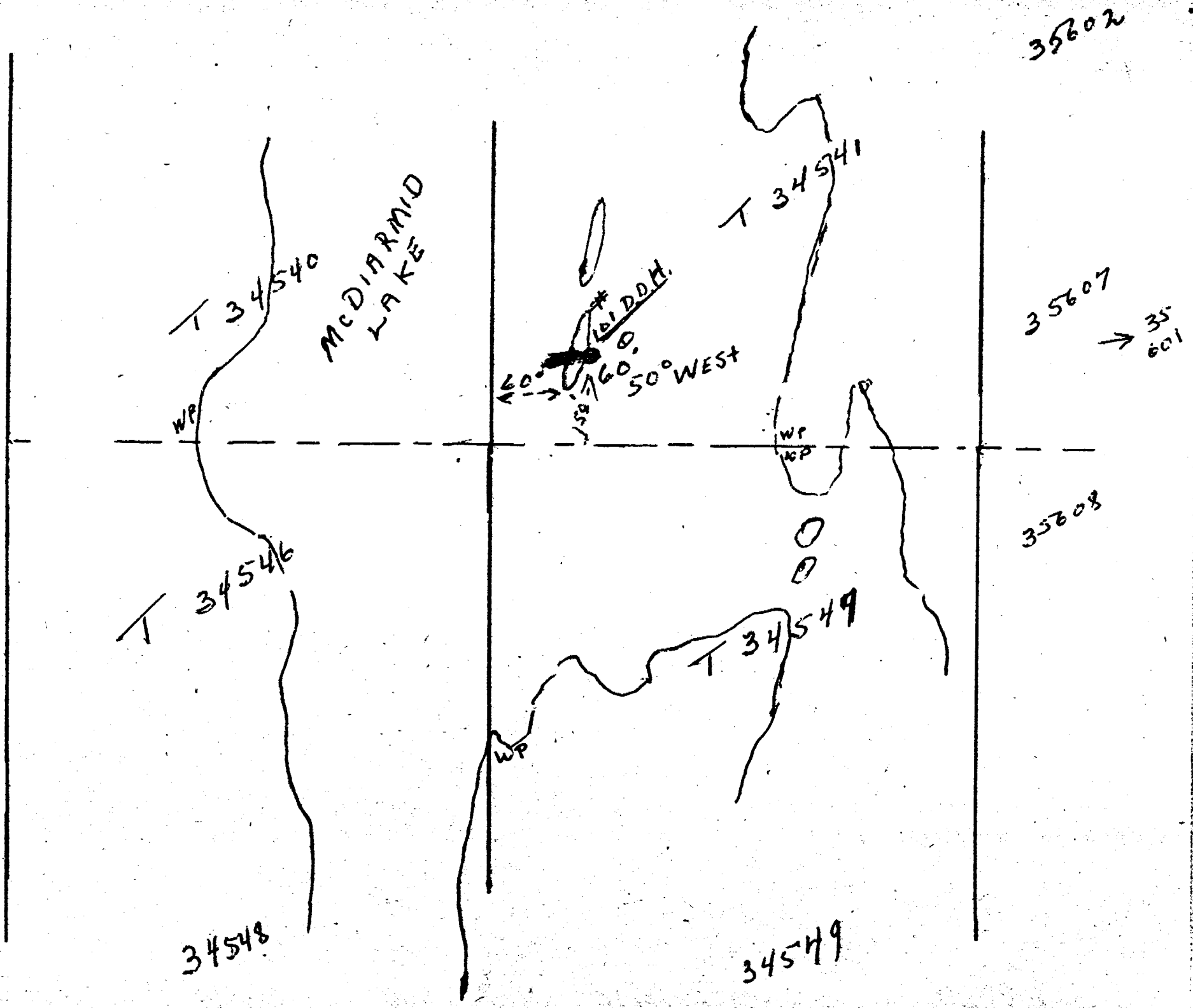
Elev. Collar Show line (Red Rock)
 Datum _____
 Date Started January 13th 1957
 Date Completed 16th 1957
 Drilled by Earl Haglund & Les Reed
 Logged by Les W. Reed

Latitude _____
 Departure Vertical
 Bearing West of East Boundary of Claim 34540
25' 2.50' N of #2 Shaft

	Footage		Formation	Sample Number	Sample Footage	Sample Width	Gold Sample	Gold Sludge	Remarks
	From	To							
# 1	0	20	fine grainy Diabase intruded with small veins of magnetite? ranging in width from 1/16" to less than 1/8"						Very cold pump kept freezing up
	20	50	fine Diabase, with well distributed flakes of (what appears magnetite)?	1	1 ft	3 to 3/16"			Shipped to Toronto for general analysis
	50	85	to coarse grain Diabase with odd fine stringers of (quartz and gray melike) & very magnetic.						
# 2	0	10	Diabase fine grain, slightly magnetic, and broken up						to close to Edge of the start cause of Broken up core
	10	30	fine grain Diabase with very fine stringers of magnetite?						
	30	50	fine to coarse Diabase with bits of epidote, slightly magnetic.						

Date of Examination Jan 17th 1957

Les W. Reed



35602

T 34540

MCDIARMID LAKE

T 34541

161 D.D.H.
60° WEST
50° WEST

35607

→ 35601

T 34546

T 34549

35608

34548

34549

Flett Twp.
T 34541

DIAMOND DRILL RECORD

Hole No. 101 Sheet No. 1

Property G. L. Murray
 Location Flett Twp. on the
C.N.R. Kenny siding
 Latitude _____
 Departure Sec 32 north Lake Island
 Bearing 20° west

101 = 50^{Dip} W - 60 ft

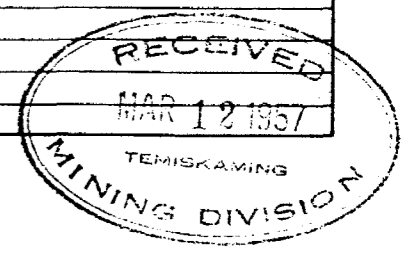
 Total Footage 60 ft

Elev. Collar ground level
 Datum apt 1 ft above water level
 Date Started March 4th 57
 Date Completed March 5th 57
 Drilled by L. W. Reed & F. Rownt
 Logged by L. W. Reed

Footage		Formation	Sample Number	Sample Footage	Sample Width	Gold Sample	Gold Sludge	Remarks
From	To							
0	5	Soft and spongy diabase eroded	—	—	—	—	—	—
5	25	Diabase fine grain with scattered sulphides of lumpy appearance and slightly magnetic						
25	60	Bands to massive sulphides in Diabase fine grain strongly magnetite also some serpentine very green and in banded bands.		25 to 35 50 to 60	10 ft 10 ft			Have ship to Toronto for general test of iron titanium & chrome

Date of Examination March 5th 1957

L. W. Reed



#130

T
34549

35607

Flitt Temp.

Island $\nearrow 90^\circ$
 $\ominus 287^\circ$

Larger Scale

$\frac{0.90}{0.90} \frac{100 \text{ ft}}{\text{DDH-3A} = 32}$
 $\frac{0.55}{0.55} \frac{\text{DDH-3-98 ft}}{\text{DDH-3-98 ft}}$

McSaxmid. L. 0

35608

34740

34746

34747

34748

Diamond Drill Record

15457

Sheet #2

Hole 103

Property Flett Twp
Location North of
Kenny Siding on the O.N.R

103 A
104

Datum; Island on East side
Of McDiarmid Lake

200 ft south of e. and w. north
line and 100 ft east of north
and south line of East Boundary
located on Island, McDiarmid lake

Date started April st 57
Completed april 3st 57
Logged by L.W.Reed

Footage Direction 85 degree East

- 0 to 30'- Coarse grain Diabase well fractured and no mineralization Visible
- 30 to 98 Formation in general to end of hole did not show any mineral, and being a sort of diabase with long shape crystal of hornblend

Hole 3 A 10 ft N.W of D.D.H. 103 to a depth of 32 ft
Vertical

- 0' to 32') 0' to 3 ft broken up ground of coarse grain diabase
3 to 32' formation more solid, Diabase with slight intrusion of small bands of fine sulphides for the last 2 ft.

D.D.H. 104 vertical

on same island and 25 ft east of 103A

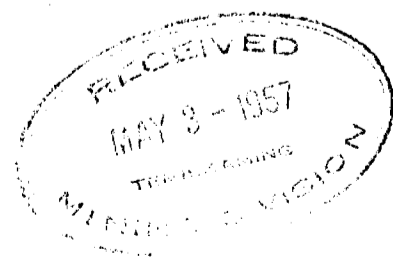
- 0 to 1 ft overburden
- 1 to 20 ft--- Diabase with hornblen very little magnetic attraction
- 20 to 50 Diabase with hornblend formation more corse no mineralization visible
- 50 to 75 Coarse grain diabase with odd fine veinlets of quartz, no mineral visible
- 75 to 100 Formation as above, more broken up and rather bloky ground, appear to be fissure of mud seams.

Total footage 230 ft

Date of examination April 6th, 1957

L. W. Reed

*Note:
No samples
taken from
the above*



T34541

BREDDHARANZ
WHITE

500' old line

90° 30'
50° 42'
70° 30'
39° 11'
52' DUMP

Note this core has not been out but has been out being secured.

TOTAL 154 ft

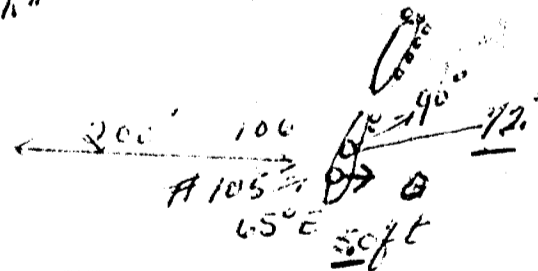
T34545

T34542

23
4

T34541

ARMID
WHITE



TOTAL 122 ft
124



9 feet

Tett Twp

DIAMOND DRILL RECORD

Hole No. 105-106 Sheet No. 1

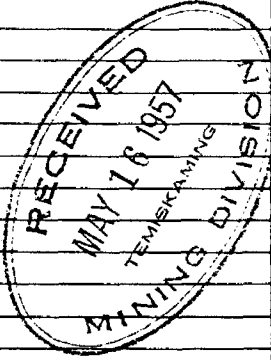
Property E. L. Murray
 Location 7th St. West
Remington Ont. on the C.N.R.
on the Seaward Lake
 Latitude _____
 Departure _____
 Bearing on small island on middle lake.

106 - Dip 72 ft 90°
 105 50 ft 65° E
 Total Footage 122 ft

Elev. Collar _____
 Datum on Island
 Date Started April 27 - 57
 Date Completed April 29 - 57
 Drilled by A. L. Murray & E. Benquette
 Logged by L. W. Reed

Footage	Formation		Sample Number	Sample Footage	Sample Width	Gold Sample	Gold Sludge	Remarks
	From	To						
105	0	50						
								fine grain diabase with inclusion of blebs of peridotite also small blurs of fine sulphides to massive sulphides core also very magnetic probably magnetite
106	0	50						fine to coarse grain diabase appears to be low edge of contact - textured beds of fine sulphide and magnetite occasional green diabase with crystals of hornblende or other feldspar.
	50	72						

Core from
 # 105 from 73 ft
 to 50 ft
 taken by
 A. L. Murray
 & E. Benquette



Date of Examination May 15th 57

L. W. Reed

FLETT
TWP

34540

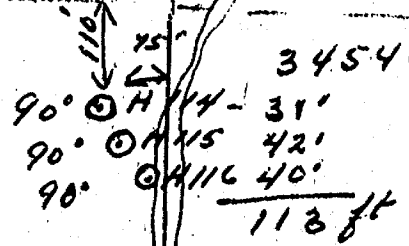
34729

34728

34730

34735

34546



Bush Road

34741

34736

Diamond Drill record

13435

Property
Flett Twp
Location
West of McDiarmid Lake
N.E. of Kenny Siding
on O.N.R. Aprx"
5 Miles from R.R.
Hole 114- 90 deg 31 ft
Hole 115 - 90 " 42 '
Hole 116- 90 " 40'

Hole #114-115-116
Bed Rock
Date started April 22nd
Completed April 26th-57
Drilled by G.Lesvesque
and Ed Ringuette
North Bay
Logged by Leo Reed

Hole 114- 110 ft south of North line and 75 ft west of east line
115 south of 114 -10 ft and 70 ft west of east line
116 10 south of 115 and 65 ft of east line

Footage
from

0 to 31 - Massive diabase, with large crystal of hornblend
no mineral visible, and non magnetic

Hole 115
0 to 42 Massive diabase, hornblend crystal no mineral visible

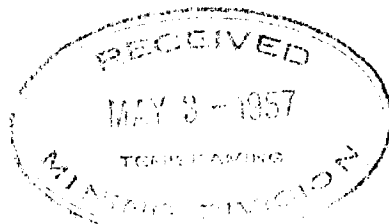
Hole 116
0 to 35 massive diabase, with hornblend, odd speck of pyrite
non magnetic and no other mineral
35 to 40 Broken up formation altered diabase with rusty
seams, non magnetic, possibly altered pyrite

Remark, Formation in general in this locality, consist
chiefly of Massive hard diabase.. ? no dykes intru-
sion, and slightly magnetic at intervals,
and no contact visible in the near by vicinity.

Core examine april 28th 1957

Leo Reed

Leo Reed



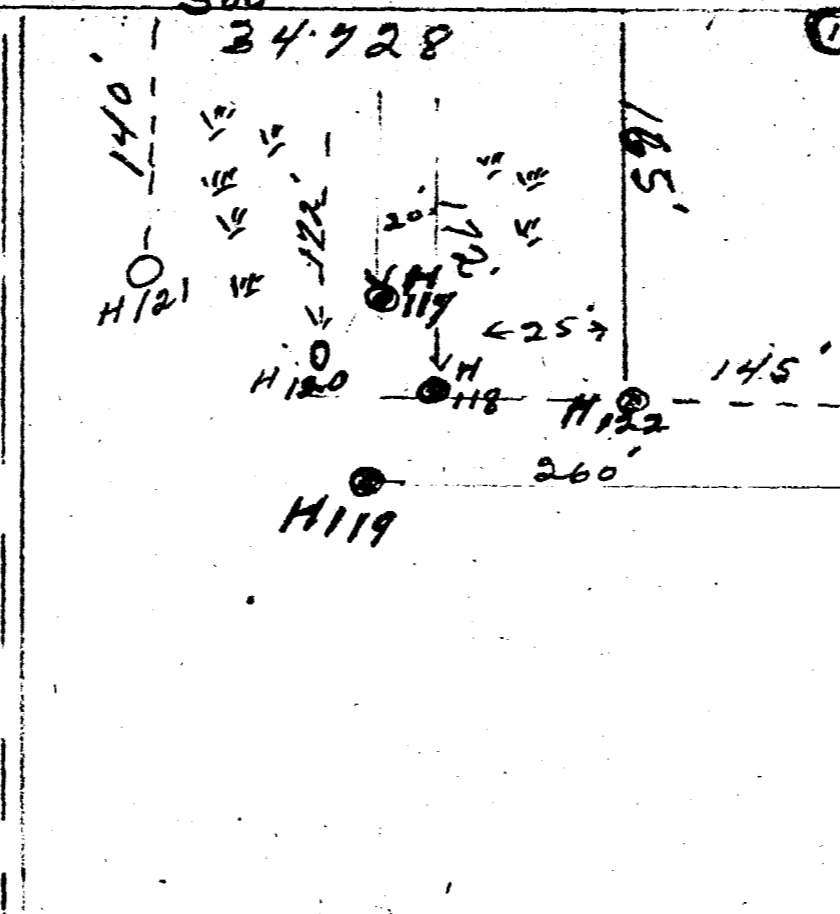


300' 34554

34545

Post

34540



DDM

117 - 90°	60'
118 - 90°	80'
119 - 90°	63'
120 - 90°5'	66'
121 - 90°	57'
122 - 90°	68'
<hr/>	
	394 ft

Claim # 1 34729

1 34730

34735

1 34731

34546

1 732

FLETT Twp

1 733

1 734

Diamond Drill Record

Property Flett Twp
North E, from O.N.R.
Kenny Siding Ontario

Holes 117-118-119-120-
121-122-~~xxxxxxx~~
West of McDiarmid Lake
Drilled on Claim T 34728
Started April 18th, 57
Completed April 22nd-57
Logged By Leo Reed

Hole #	117-90	Deg	60ft	
	118-90	"	80'	
	119-90	"	63'	
	120-70	S	66'	
	121-90		57'	
	122-90		68	
			<u> </u>	total Footage 394

Footage

From
HOLE 117

0 to 50 - Formation coarse grain diabase massive intrude with hornblen with odd speck of pyrite, very littaa magnetite
50 to 60 Broken up formation in diabase, with several sand seams no visible mineralization.

Hole 118

0 to 80 - Massive diabase formation novisible mineral, and non magnetic, hornblend,

Hole 119

0 to 60 - Massive diabase, with hornblend, no other mineral visible,
60 to 63 - Broken up formation and muddy seams.

Hole 120

0 to 20 Massive Diabase intruded with fine stringers of quartz ranging from 1/8 " to 1/4" no visible mineral
20 to 50 Diabase coarse grain with fine speck of pyrite non magnetic.
50 to 66 Diabase , hornblend, several fractures and mud seams.

Hole 121

0 to 57 Hard massive diabase very coarse, with long lenticular crystal of hornblend, no other visible mineral

Hole 122 -

0 to 8 Decomposed diabase, well fractured
8 to 25 Diabase very much altered with several seams of mud no mineral visile
25 to 50 Formation becomes more solid, Diabase with hornblen few odd speck of pyrite, non magnetic.
50 to 68 Massive diabase Hornblen, odd stringers and blocth of quartz, no mineral visible with the quartz, and non magnetic.

Remark, formation in general appears to be away from the finer diabase, containing the magnetite and other mineralization and no dykes are present in the near vicinity to the east or west, it is apparent that the better formation for the presence of bearing mineral lies more to the east Of Breadalbane lake, and in the east, shore of the north part of McDiarmid lake.

No samples taken from this area.

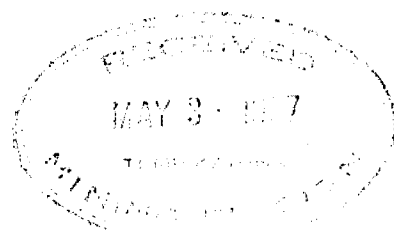
Date of Examination

April 26th, 1957

April 26 1957

Leo Reed

Leo Reed



34921



34737 34741

34738 34742 34743

34739 34745 34744

34803 34802 34801

34804 34805 34806

34809 34810

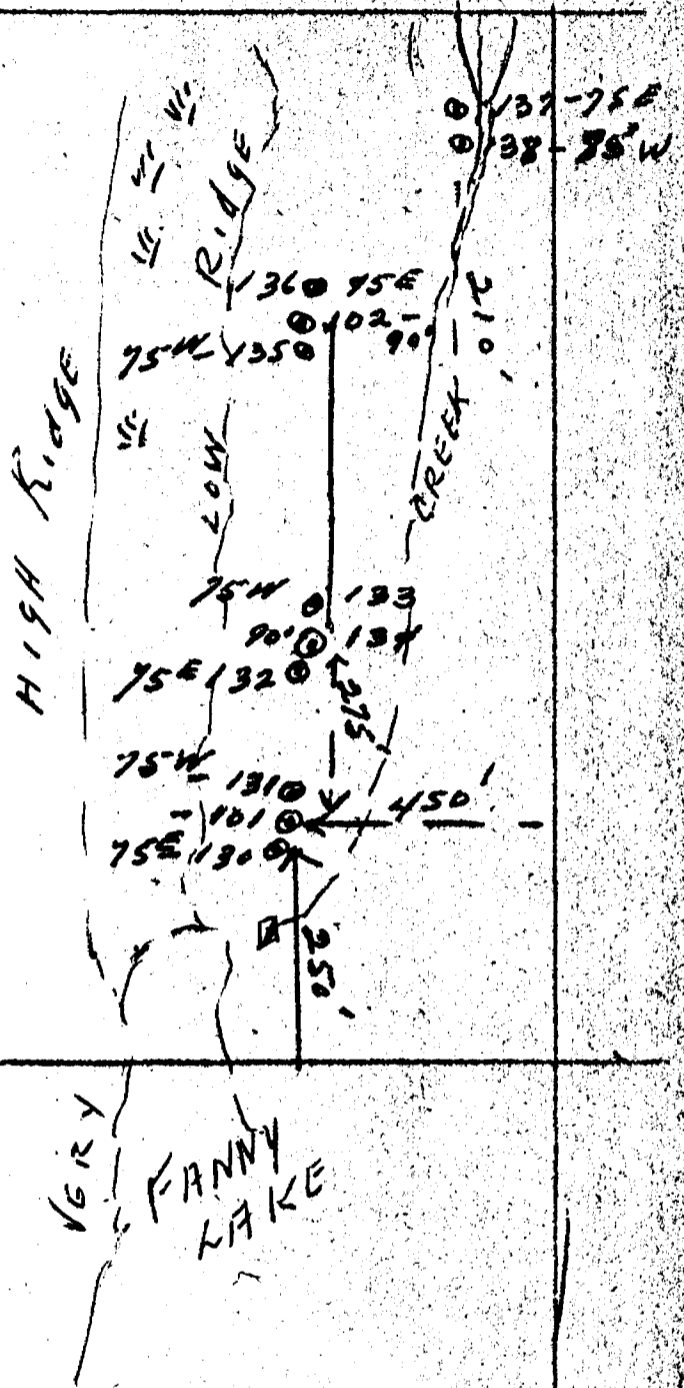
34811 34812

W
R
I
T
E

CS

FLETT
TWP

T
34941



Diamond Drill record

Property Flett Twp
Located N.E. of the O.N.R
Kenny Siding, Ont

Hole # 101- 130-131
All start Bed Rock
Started April 4th, 1957
Completed 17th April
Drilled by, L.Reed
R.Doyle, E.Bovay
R.Ringuette and Ed
Ringuette . R.Lapierre
Logged by Leo.Reed

Hole # 101 vertical
Hole 130 75 East
Hole 131 75 West

Footage
From -- to

0 23 Fine grain diabase with intrusion of fine pyrite and stringers of quartz.
23 50 Diabase with stringers of sulphides ranging from 1/8" to 1/2" and very magnetic.
50 115 Fine grain diabase well mineralized with band of sulphides, with a little chalcopyrite, and very magnetic.

Hole 130

0. 25 Fine grain diabase with band of sulphides, with stringers of pyrite, sulphides are very magnetic
25 80 Diabase with more massive bands of sulphides, and veinlets of serpentine, very magnetic.

Hole 131

0 25 Fine grain diabase with dark to dark yellow band intruded with veinlets of serpentine.,
25 50 Diabase same as above, plus veinlets of sulphides very magnetic, and small dobs of pyrite.
50 70 diabase, bands ranging from 1/2 inc to 3/4 inc of sulphides very magnetic
70 85 formation appears to change to coarser diabase with needles of hornblende, and odd speck of pyrite.

The above holes are 250 ft North of the South claim boundary and 450 west of the north south line of the east boundary

Samples are to be taken from core for general assay, .

Total footage 280

Logged April 17th, 1957

Leo Reed

Leo Reed.

130001

Diamond Drill Record

Flett Twp property
North of C.N.R.
Kenney Siding, Ont
Hole 132- 75 E
Hole 133 75 W
hole 134 90

Hole 132-133-134
Strated April 4th
completed april 17th-57
Drilled by R.Doyle
E.Bovay
R.Ringuette
R.Lapierre
Logged Leo Reed

25 ft north of hole 101-130-131

Footage

From to

0 83 first 2 inches rusty material continuing with
diabase with stringers of pyrite and fine sulphides
intruded with bands of serpentine, in general
the magnetic attraction varies according to
width of the sulphides bands, probably magnetite

Hole 133

0 88 is very similar in structure with no apparant chan
ge in the formation, and correspond very well with
other holes to the south.

Hole 134

0 110 Fine grain diabase, with horizontal to incline
vein and veinlets ranging in with from 1/8 to 1/2
inch of fine sulphide magnetic with some intrusion
of serpentine.

Remark.. The fo mation in general seems to be in a dyke
bordered to the East and west with a coarser formation
diabase, which is much less magnetic than the dyke
itself- Core are to be split for a general assay.

Date of Examination April 17th, 1957

By Leo Reed

Leo Reed.

*Total Footage
281 ft*

Diamond Drill record

Property Flett Twp
Kenny Ont
North East apprx 5 Miles

Hole 135-136-137-138

*Started April 4th 1957
Completed April 17th 57*

Hole 135-75 ~~W~~ 86 ft
Hole 136-75 ~~E~~ 84
102 90 112 ft
Hole 137 75 E 84 ft
Hole 138 75 W 80 ft

Location of Hole 102 -135- and 136 are 150 North of hole #101
Footage

From

0 to 80 Fine diabase with vein and veinlets of sulphides
a little pyrite, magnetic, also some intrusion of
serpentine.
80 to 86 Formation changes to coarser diabase with
horblend crystal, and very little magnetic attraction

Hole 136

0 to 84 Fine grain diabase with quartz strigers in the first
10 ft with odd specks of pyrite, than sulphides
bands appears through out varying in width, with
much magnetic attraction, some bands of sulphides
are intrude with small veinlets of serpentine, and
also some pyrite.

Hole 137 and 138 are 210 ft north of hole #101 and more to the
east, very close to Fanny creek.

0 to 84- The formation is very similar to all other holes
except that the mineralization is more scattered
through out the core, giving an appearance of fine
grey silvery pebbles, or flakes very magnetic,
could be magnetite.

Hole 138

0 to 80 has the same aspect as the other, tho the sulphides
are more massive and are in bands form from
20 to 80, with odd veinlets of serpentine, and pyrite
along the sulphides.

Total footage --344

Remark- all cores are to be split and taken for a general test
it appears that this dyke ? carries much mineral
and lies between a more massive diabase which has
no mineral visible, and the varying width of this Dyke...?
appears to be from 50 ft to up 200 ft. This dyke
runs North to North east and can be traced for a considerable
distance to the north and to the south.

Core examine April 17th, 1957

By Leo Reed

Leo Reed.



Total footage
1011 ft

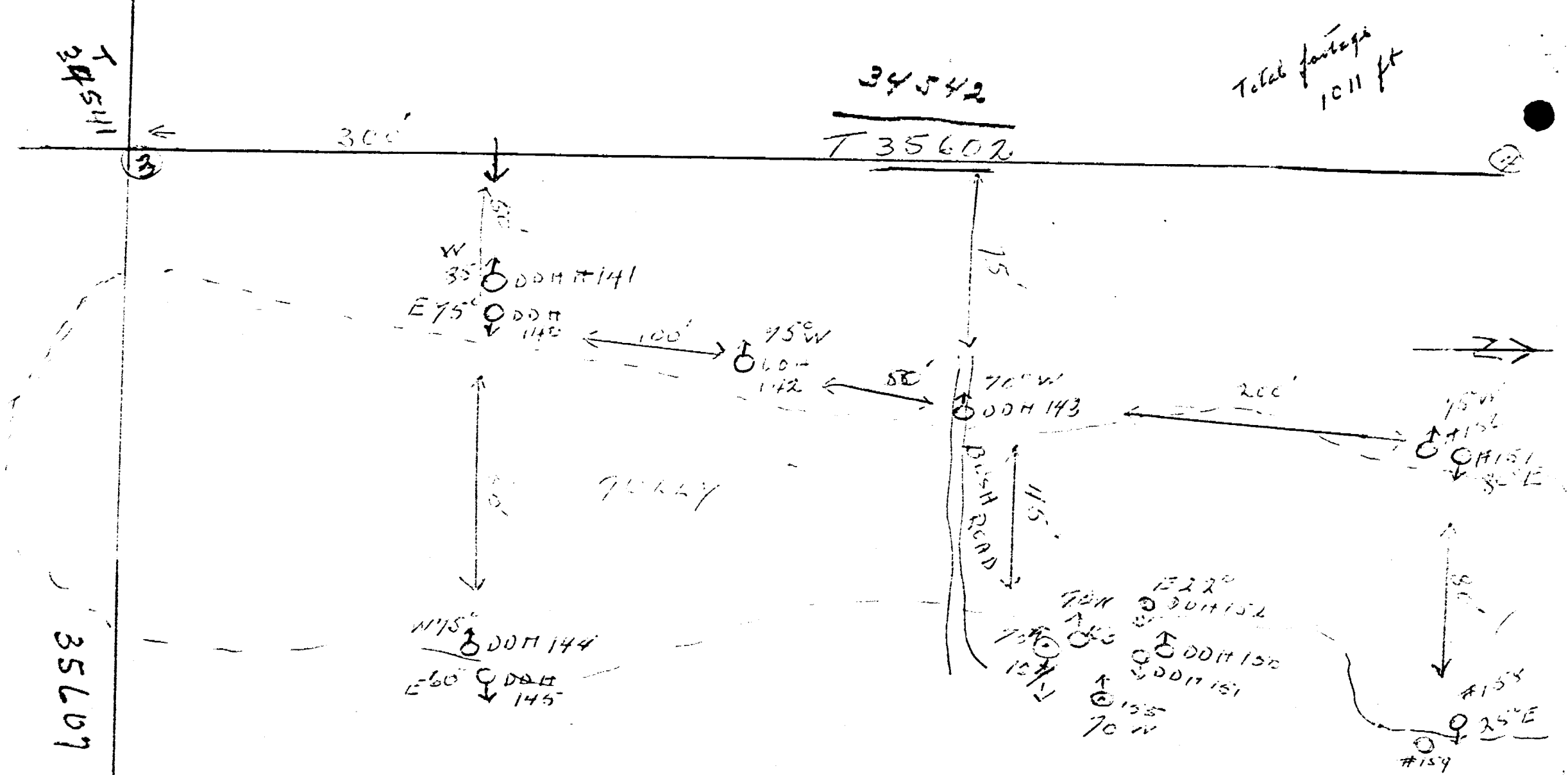
34542

T 35602

11541

300'

3



35609



NOTES
 Holes # 140 to
 # 145 incl *
 325 ft

Holes # 150 to
 # 155 incl = 357 ft
 Logged by al Barry - m.e.

TOTAL 329 ft
 Logged by K. Reed

Total 682 ft

16 holes

#131

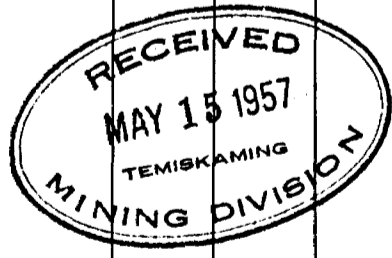
LOCATION: Flett Township Claim No. 735602 Hole No. 140

LAT: _____ DIP 70 degrees

DEP: _____ STRIKE 270 degrees

ELEV: _____ LOGGED BY A. L. Barry, Geologist, Haileybury, Ont.

FOOTAGE	DESCRIPTION	SAMPLE NO.	AG	CO.	NI.
0 - 42'	<p>Fine grained gabbroic rock highly magnetic and cut by stringers of serpentine with some magnetite. Whole of core has some disseminated magnetite throughout.</p> <p>42' end of hole</p> <p>Drilled by Mr. Leo Reed Sunset Park</p>				



LOCATION: Flett Township Claim No.-----

Hole No.-----141-----

LAT:-----DIP 85 deg.-----

DEP:-----STRIKE 90 deg.-----

ELEV:-----LOGGED BY A. L. Barry, Geologist, Haileybury, Ont.

FOOTAGE	DESCRIPTION	SAMPLE NO.	AG	CO.	NI.
0 - 53'	<p>Fine grained gabbroic rock highly magnetic. Cut by stringers of serpentine and magnetite. Whole of core has disseminated magnetite.</p> <p>53' end of hole</p> <p>Drilled by Mr. Leo Reed Sunset Park</p>				



LOCATION: Flett Township Claim No. -----

Hole No. 142 -----

LAT: ----- DIP 75 deg. -----

DEP: ----- STRIKE 270 deg. -----

ELEV: ----- LOGGED BY A. L. Barry, Geologist, Haileybury, Ont. -----

FOOTAGE	DESCRIPTION	SAMPLE NO.	AG	CO.	NI.
0 - 30'	<p>Fine grained gabbroic rock highly magnetic. Cut by stringers of serpentine and magnetite. Whole of core has disseminated magnetite.</p> <p>30' end of hole</p> <p>Drilled by Mr. Leo Reed Sunset Park</p>				



LOCATION: Flett Township Claim No. _____

Hole No. 143 _____

LAT: _____ DIP 75 deg. _____

DEP: _____ STRIKE 270 deg. _____

ELEV: _____ LOGGED BY A. L. Barry, Geologist, Haileybury, Ont. _____

FOOTAGE	DESCRIPTION	SAMPLE NO.	AG	CO.	NI.
0 - 75'	<p>Fine grained gabbroic rock highly magnetic and cut by thin stringers of serpentine and magnetite. Whole of core has disseminated magnetite.</p> <p>75' end of hole</p> <p>Drilled by Mr. Leo Reed Sunset Park</p>				



LOCATION: Flett Township Claim No.

Hole No. 144

DIP 75 deg.

STRIKE 270 deg.

LOGGED BY A. L. Barry, Geologist, Haileybury, Ont.

FOOTAGE	DESCRIPTION	SAMPLE NO.	AG	CO.	NI.
0 - 70'	Fine grained gabbroic rock which is highly magnetic. Cut by stringers of Serpentine and Magnetite. Whole core has disseminated magnetite				
70' - 75'	Coarse Gabbro. Has some magnetite but smaller quantities than fine grained material. Contact between the two is quite distinct.				
	75' end of hole				
	Drilled by Mr. Leo Reed Sunset Park				



LOCATION: Flett Township Claim No. -----

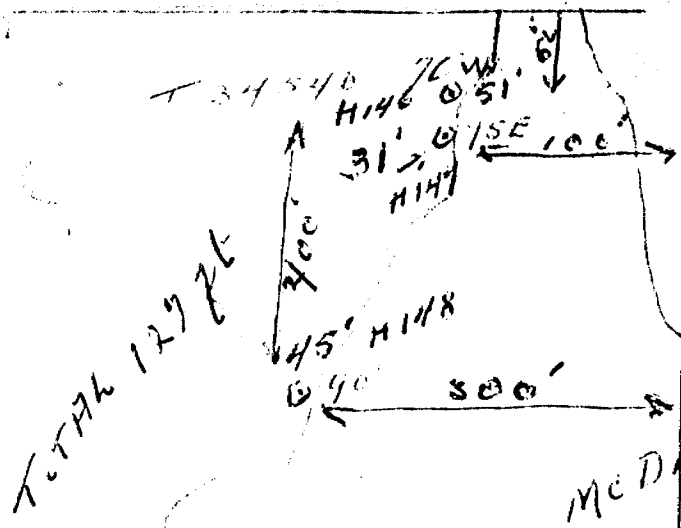
Hole No. 145 -----

LAT: ----- DIP 60 deg. -----

DEP: ----- STRIKE 90 deg. -----

ELEV: ----- LOGGED BY A. L. Barry, Geologist, Haileybury, Ont. -----

FOOTAGE	DESCRIPTION	SAMPLE NO.	AG	CO.	NI.
0 - 42'	Fine grained gabbroic rock cut by stringers of Serpentine and magnetite. Whole of core has disseminated magnetite				
42' - 50'	Coarse Gabbro, some magnetite 50' end of hole				
	Drilled by Mr. Leo Reed SunsetPark				



3 Rods
 127'

Flett
Twp.

T 31550

Diamond drill record

Property C.I. Murray
Flett Twp
North of kenny siding on the
west side of McDiarmid Lake

Holes 146-47-48
Drilled by
L. Fluet and J.L. Cloutier
North Bay
Drilled April 29-and 30th
1957
Logged by I. Reed

146- 70 deg west
147 75 " East
148 90 deg

Elevation above lake
15 to 20 ft

D.D.H. 146

0 to 51 -- Coarse grain diabase with crystal of feldspar
with odd specks of magnetite

H-147

0 to 30 - very black and fine grain of diabase appears to be
part of a dyke banded with serpentine and blebs of
sulphides very magnetic
30 to 31 formation changes to coarser material spotted with
greenish blebs of what may be serpentine and with
very little sulphides showing.

Hole 148

0 to 45 heavy and coarse diabase with long needle like of
shiny crystal (of feldspar) or hornblen no sul
phides visible and very little magnetite.

Examine May 2 nd 1957

Leo Reed

Leo Reed

31
31
45
147
1



LOCATION: Flett Township Claim No.
 LAT: DIP 70 deg.
 DEP: STRIKE 270 deg.
 ELEV: LOGGED BY

Hole No. 150

A. L. Barry, Geologist, Haileybury, Ont.

FOOTAGE	DESCRIPTION	SAMPLE NO.	AG	CO.	NI.
0 - 75'	<p>Fine grained gabbroic rock with stringers of serpentine and magnetite. Whole of core has disseminated magnetite.</p> <p>75' end of hole</p> <p>Drilled by Mr. Leo Reed Sunset Park</p>				



LOCATION: Flett Township Claim No. _____
 LAT: _____ DIP 70 deg. _____
 DEP: _____ STRIKE 90 deg. _____
 ELEV: _____ LOGGED BY _____

Hole No. 151 _____

A. L. Barry, Geologist, Haileybury, Ont.

FOOTAGE	DESCRIPTION	SAMPLE NO.	AG	CO.	NI.
0 - 25'	<p>Fine grained gabbroic rock, highly magnetic. Last 3 feet appear "sandy" and are highly magnetic, may be possible fault structure.</p> <p>25' end of hole</p> <p>Drilled by Mr. Leo Reed Sunset Park</p>				



LOCATION: Flett Township Claim No.-----

Hole No. 152-----

LAT:-----DIP 22 deg.-----

DEP:-----STRIKE 90 deg.-----

ELEV:-----LOGGED BY A. L. Barry, Geologist, Haileybury, Ont.-----

FOOTAGE	DESCRIPTION	SAMPLE NO.	AG	CO.	NI.
0 - 41'	<p>Drilled almost flat into side of outcrop.</p> <p>fine grained gabbroic rock has disseminated magnetite.</p> <p>41' end of hole</p> <p>Drilled by Mr. Leo Reed Sunset Park</p>				

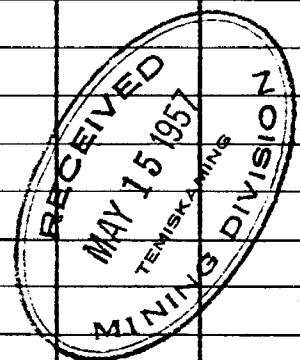


DIAMOND DRILL RECORD

PROPERTY Flett Township HOLE NO. 153

SHEET NUMBER _____ SECTION FROM _____ TO _____ STARTED _____
LATITUDE _____ DATUM Claim No. COMPLETED _____
DEPARTURE _____ BEARING 270 deg. ULTIMATE DEPTH _____
ELEVATION _____ DIP 70 deg. PROPOSED DEPTH _____

DEPTH FEET	FORMATION	SAMPLE No.	WIDTH OF SAMPLE	GOLD \$	SLUDGE GOLD \$
<u>0 - 80'</u>	<u>Fine grained gabbroic rock, Has disseminated magnetite with some stringers of Serpentine and magnetite.</u>				
	<u>80' end of hole</u>				



N.M.P., TORONTO-STOCK FORM NO. 501 REV. 12/51

DRILLED BY Mr. Leo Reed, Sunset Park SIGNED A. L. Barry

DIAMOND DRILL RECORD

PROPERTY Flett Township HOLE NO. 154

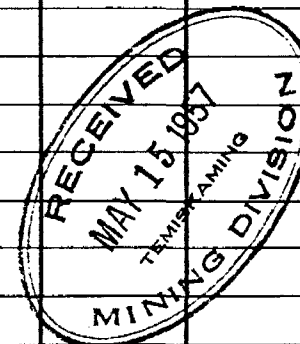
SHEET NUMBER _____ SECTION FROM _____ TO _____ STARTED _____

LATITUDE _____ DATUM Claim No. COMPLETED _____

DEPARTURE _____ BEARING 90 deg. ULTIMATE DEPTH _____

ELEVATION _____ DIP 70 deg. PROPOSED DEPTH _____

DEPTH FEET	FORMATION	SAMPLE NO.	WIDTH OF SAMPLE	GOLD \$	SLUDGE GOLD \$	
0 - 80'	Fine grained gabbroic rock with disseminated magnetite and some stringers of Serpentine and magnetite.					
	80' end of hole					



N.M.P., TORONTO—STOCK FORM No. 501 REV. 12/51

DRILLED BY Mr. Leo Redd, Sunset Park

SIGNED A. L. Barry

DIAMOND DRILL RECORD

PROPERTY Flett Township HOLE NO. 155

SHEET NUMBER _____ SECTION FROM _____ TO _____ STARTED _____
 LATITUDE _____ DATUM Claim No. COMPLETED _____
 DEPARTURE _____ BEARING 270 deg. ULTIMATE DEPTH _____
 ELEVATION _____ DIP 70 deg. PROPOSED DEPTH _____

DEPTH FEET	FORMATION	SAMPLE NO.	WIDTH OF SAMPLE	GOLD \$	SLUDGE GOLD \$
0 - 56'	Fine grained gabbroic rock with stringers of serpentine and magnetite whole of core has disseminated magnetite				

N.M.P., TORONTO—STOCK FORM No. 501 REV. 12/51

DRILLED BY Mr. Leo Reed, Sunset Park

SIGNED A. L. Barry

DIAMOND DRILL RECORD

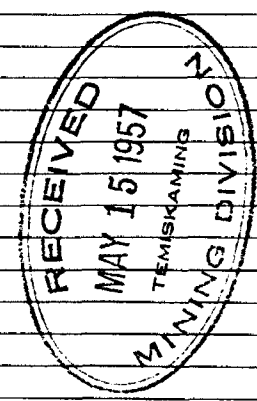
Hole No. 156-57-58-59 Sheet No. 2

Property L. L. Murray
 Location Flint Top - North
of DNR at Murray Subing
East of Suddland Lake
 Latitude _____
 Departure _____
 Bearing _____

	Dip			
156	75 W			85'
157	80 E			80'
158	25 E			43'
159	90			31'
Total Footage		329 ft		

To accompany A Bony m.E
 Elev. Collar previous holes from 140 to 145
 Datum then 33002
 Date Started May 12 1957 (end 156 to 155)
 Date Completed May 13 1957
 Drilled by L. Mc BURNEY - R. LAPIERRE
 Logged by B. CHOUTIER - L. FLUET
29900 Leo Reed

157	Footage		Formation	Sample Number	Sample Footage	Sample Width	Gold Sample	Gold Sludge	Remarks
	From	To							
	C	25	Broken up diabase with interstices of serpentine and sulphides and magnetite						
		25	65 formation more white fine grain diabase with bands of serpentine accompanying with fine sulphides and magnetite						
		65	85 formation changes to coarser grain diabase with magnetite and add streaks of sulphides in very fine bands						
157	C	15	15 fine grain diabase broken up greenish						all these down to the south to other holes - and very continuous body.
		15	80 fine grain diabase with bands of serpentine ranging in width from 1/4 inch to 2 inches along with massive sulphides and very magnetite						
158	C	25	25 very fine grain diabase with fine streaks of sulphides and magnetite						
		25	38 powdered ground base very magnetite						
		28	53 ground more solid fine grain diabase with bands of serpentine - heavy sulphides and magnetite						



Date of Examination May 13th 57

Leo Reed

DIAMOND DRILL RECORD

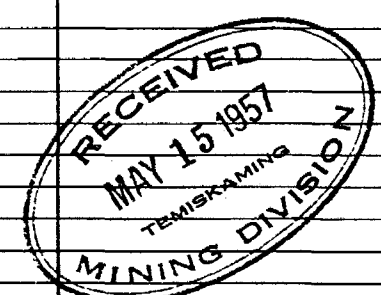
Continued
Hole No. 159 Sheet No. 2

Property
Location
.....
.....
Latitude
Departure
Bearing

159 Dip 91'
.....
.....
.....
.....
.....
Total Footage 1081 ft

Elev. Collar In company previous
Datum Well Log by R. Bennett
Date Started May 1st 57
Date Completed May 13 57
Drilled by R. M. Bennett & Roger Raper
Logged by Lee Reed

Footage	Formation	Sample Number	Sample Footage	Sample Width	Gold Sample	Gold Sludge	Remarks
159 c	81 fine grain diabase with streaks of amphibole dipping east (west) interbedded with bands of serpentine carrying magnetite						



Date of Examination May 13 - 57

Lee Reed

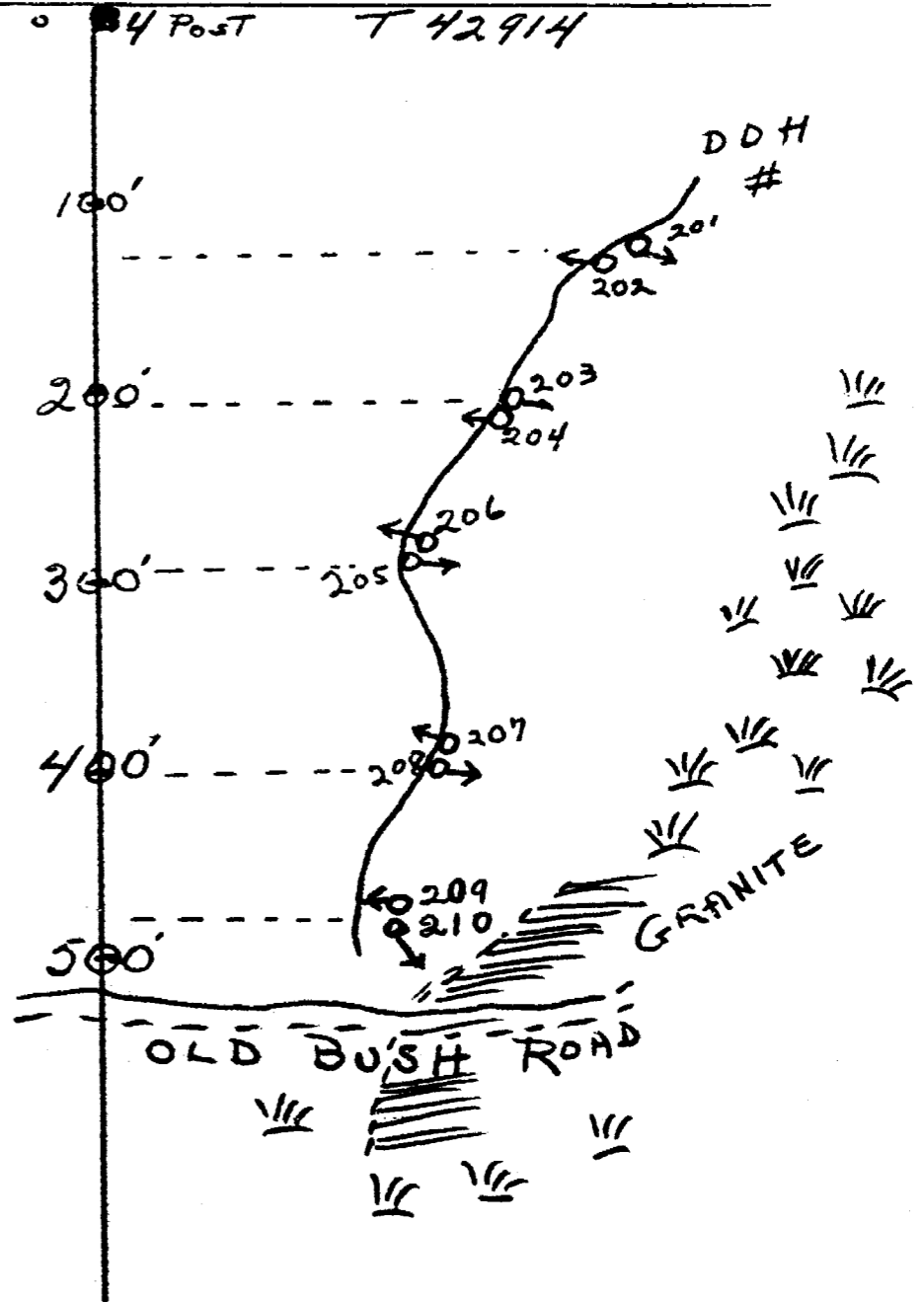
FLETT TWP

N.W

T 34834

# DDH	
201	65' = 50° E
202	70' = 60° W
203	64' = 60° E
204	66' = 60° W
205	72' = 65° E
206	73' = 70° W
207	70' = 70° W
208	66' = 65° E
209	53' = 65° W
210	41' = 50° S.W

TOTAL 640 ft.



Location Frett Township

Claim # 42914 Logged BY Leo Reed North Bay Ontario.

Hole #	Dip	Footage	Description
201	50E	0-65'	Fine to coarser grain diabase with spots of Magnetite throughout all the core, close examination with magnifying glass, shiny lenticular crystal are visible could be hornblend, other very fine and of various colour appears to be garnets, in general the core from all these holes is slightly magnetic, and no other mineralization is visible.
20 2	60 W	0-70'	
203	60 E	0-64'	
204	60 W	0-66'	
205	65 E	0-72'	
206	70 W	0-73'	
207	70 W	0-70'	
208	65 E	0-66'	
209	65 W	0-53'	

Hole 210 dip 50 Deg S.W.

0-41 0 to 20' fine grain diabase with odd streaks, or very small veinlets of what appears to be magnetite, responding strongly to the Magnet also associate to what appears to be serpentine giving a very greenish sludge while drilling. 20 to 41 ' a coarse grain granite, reddish in colour and softer than ordinary granite.

Drilled By Leo Reed
and Roger Lapierre
North Bay, Ont.

Dear Sirs:

I have compiled the above log from #201 to 209 because the core obtained has the same appearance throughout, with no definite change in the formation, except in the last hole #210, I trust that the above will be satisfactory in this matter, Thanking you I remain,

Respectfully yours.



L. Reed

34543

34808

34834



500 FT

#1

110 FT
D.D.H.
100' - 45° W

34542

500'

45° W #2
100 FT

49351

49353

34541

49352

49354

34547

49838

49355

34549

34746

49839

~~135~~
#135

Location ; Flett Twp

Hole #1

Claim # T 49351

Logged By. Leo Reed

Footage

Description

0' - 100'

Fine grain Diabase. No mineral visible
except some odd crystal of hornblend
100.1 end of hole

Hole #2

Claim T 49351

Footage

0' - 100'

Diabase throughout fine in texture, no
mineral visible, tho' slightly magnetic
100 end of hole

L.Reed

Leo Reed





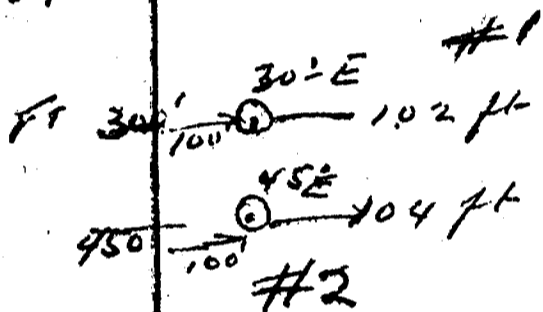
34543

34808

34542

T49351

49353



34541

49352

43384

49355

Location ; Flett Twp

Hole # 1

Claim # T 49351

Dip 30 Deg E

Logged by Leo Reed Temagami, Ont

Footage

0 - 102'

Coarse diabase with spots of
magnetite throughout, no other mineral visible
Core is magnetic.

102' end of hole

Drilled by Leo Reed
Temagami, Ont

Location Flett Twp

Hole # 2

Dip 45 deg E

Logged by Leo Reed Temagami, Ont

Claim # T 49351

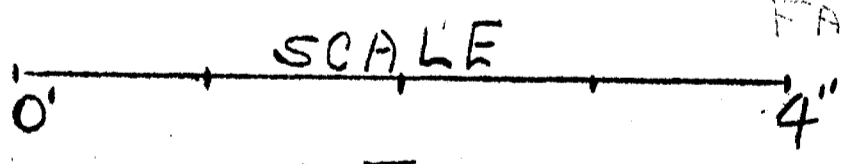
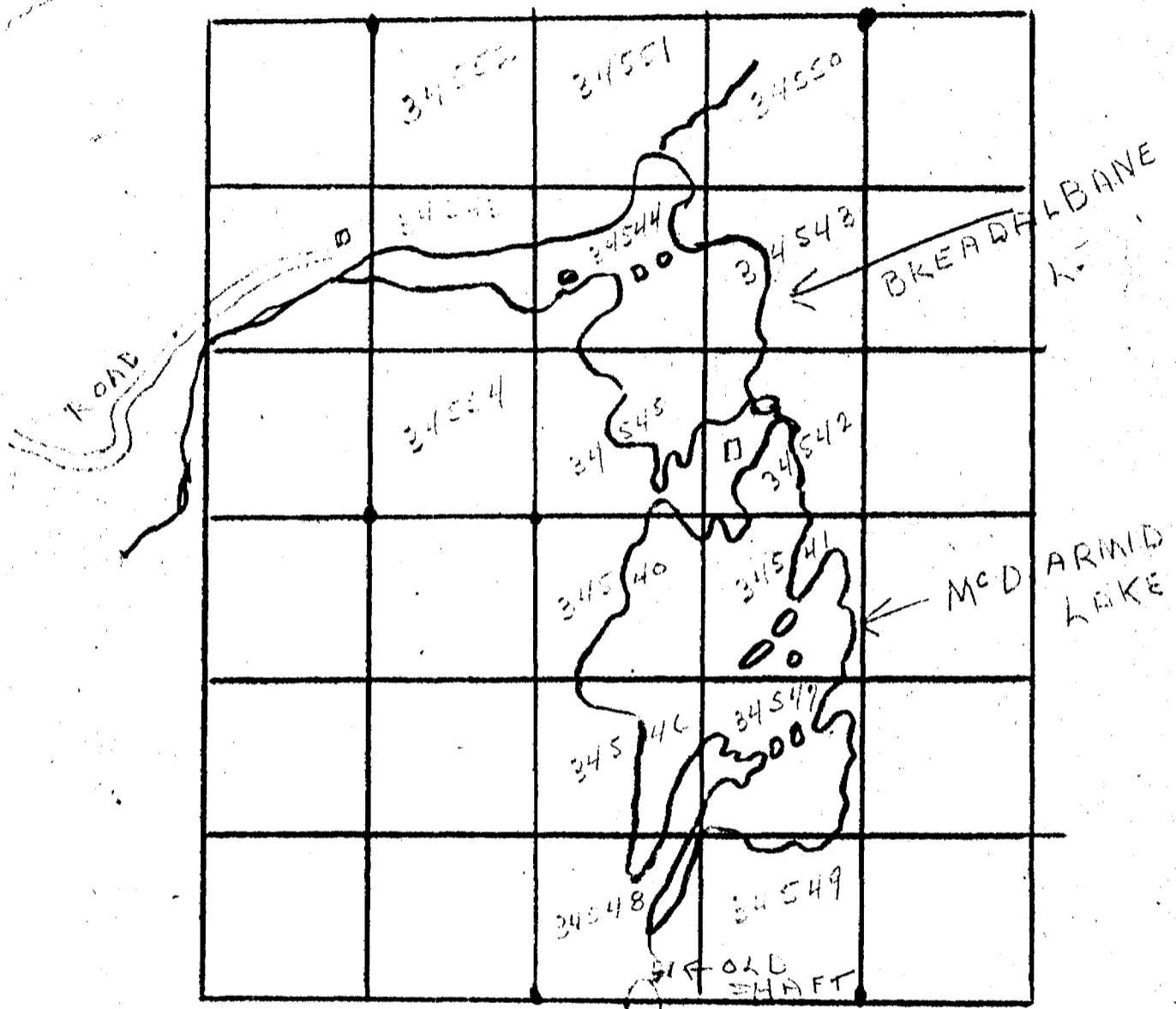
Footage

0 - 104 ' Coarse grain Diabase with grayish to whiteish spots interbedded along the mass, no actual mineral visible, tho' the core is magnetic.

104 ft end of hole

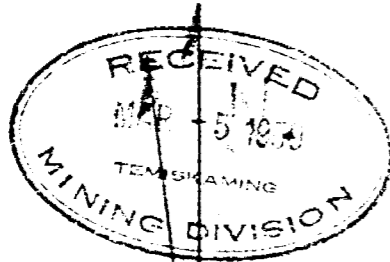
Drilled by Leo Reed

Temagami.



SCALE
= 1 MILE





FLETT TWP

#1 - 100'	125'	FT
#2 - 55'	140'	"
#3 - 25'	130'	"
#4 - 55'	100'	"
#5 - 90'	60'	"

SEE ME

MINING DIVISION

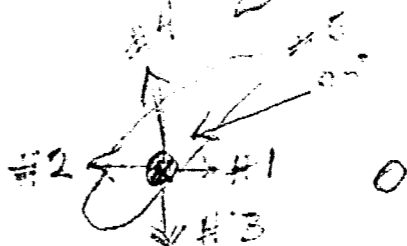
T-34554

T-34545
T-34540

T-34542
T-34541

34546

34547



← 250'
↑ 120'
LOWER RIVER

WP

WP

WP

WP

T 34451

Location ; Flett Township Claims # T 34540 to 34554 Incl"

Hole # 1 55 deg East

Claim # 34541

Logged by Ieo W. Reed Box 207 Temagami

Footage	Description
0 to 12'	Decomposed material broken up and muddy
12 to 80	Diabase fine grain with occasional black band of what appears to be a black carbonate, associated with fine sulphides, the bands vary in width from a half inch, to 3 and 6. inches, same very magnetic.
80 to 125	same as above, with the exception the serpentine intercept or cut's in and rather mix with the sulphides core also very magnetic.

Hole #2 Claim 34541 55 deg west

Footage

0 to 130	Diabase, with band of black and soft material ranging in width from 1 inch to 1 ft, bands of serpentine are more frequent along the sulphides, core through out very magnetic.
130 to 140	formation change to coarser grain, showing hornblend and occasional specks of pyrite, core no so magnetic.

hole #3 55 deg South East

Footage;

0 to 10 ft	Soft decomposed material muddy
10 to 50	Diabase, with band to massive sulphides, with serpentine strong in magnetite.
50 to 130	Diabase fine grain though out, occasional stringers to small veins of magnetite associate with small bands of sulphides varrying in width $\frac{1}{2}$ inch to 1" and occasional splash of pyrite.

I. Reed



Location ; Flett Township Claims 34540 to 34554

Hole # 4 55 Deg North W.

Drilled on Claim 34541

Logged by Leo W. Reed Temagami. Ont

Footage

Description

0 to 100

Diabase fine grain, occasional black band varrying in width $\frac{1}{4}$ " to $\frac{1}{2}$ " with stringers of sulphides running paralell very magnetic. at 60 ft, for 1ft scattered stringers of serpentine intermixed with sulphides also very magnetic. core in general is fairly magnetite.

Hole #5

90 degree

0 to 40

Fine grain Diabase with sulphides showing thorough out also serpentine in bands of $\frac{1}{2}$ inch, core very magnetic.

40 to 41

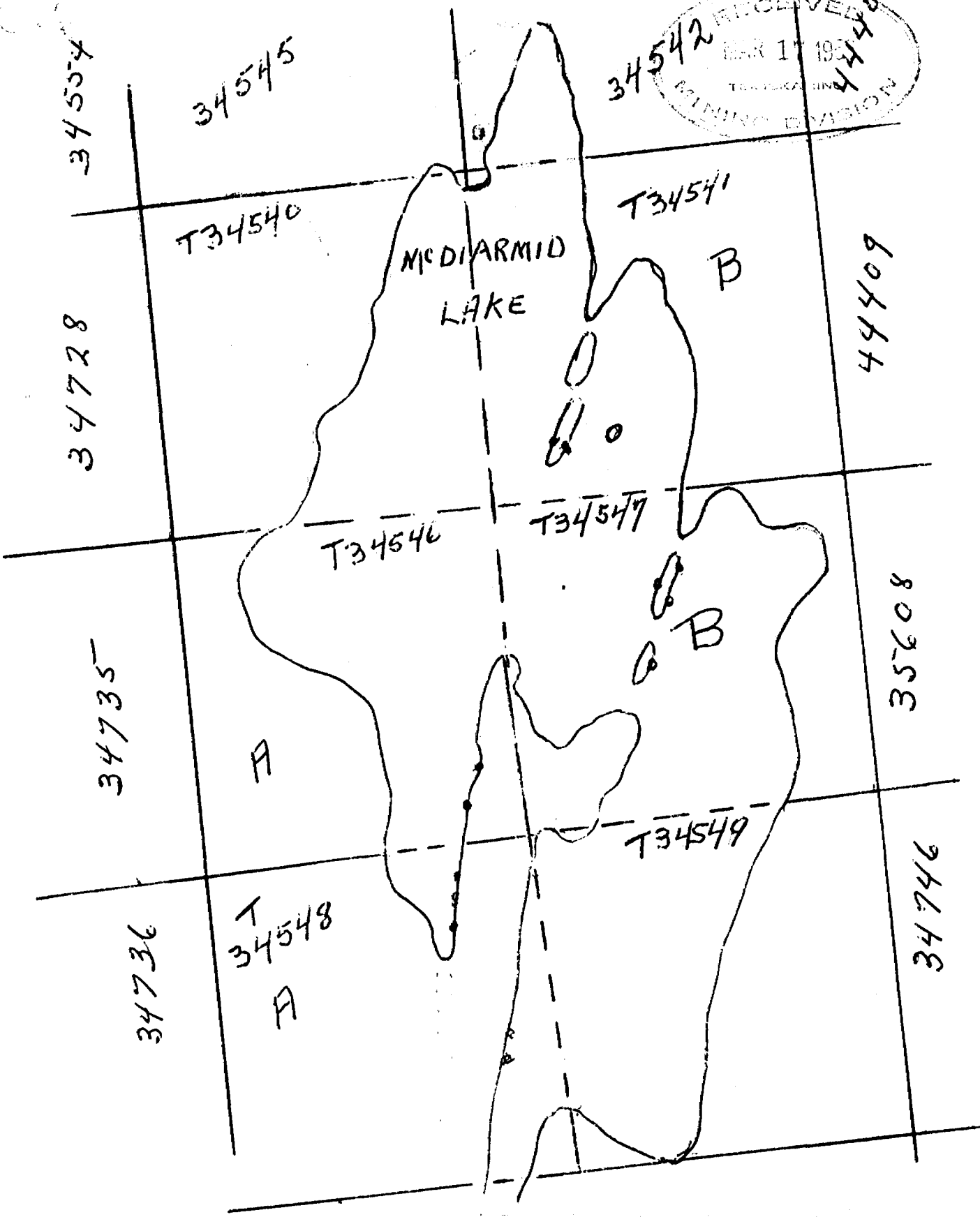
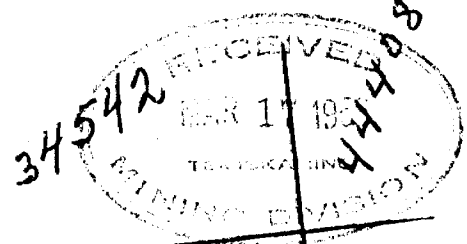
Sulphides intermixed with serpentine, with two small cluster of silver inbedded in a carbonate rather decompose

41 to 60

no other mineral visible except the sulphides and bands of serpentine, the magnetite appears to be with the sulphides, the cluster of silver were noted in a seam of carbonate, with no other mineral visible

J. Reed

FLETT TWP #121



34545

34542

34554

T34540

T34541

34728

McDIARMID LAKE

B

44409

T34546

T34547

34735

A

B

35608

34736

T34548

A

T34549

34746

B group FLETT TWP

T
34540

T34541

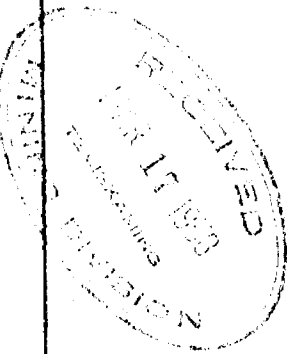
McDIARMID
LAKE

B6
HSE → 45°E B5

400'

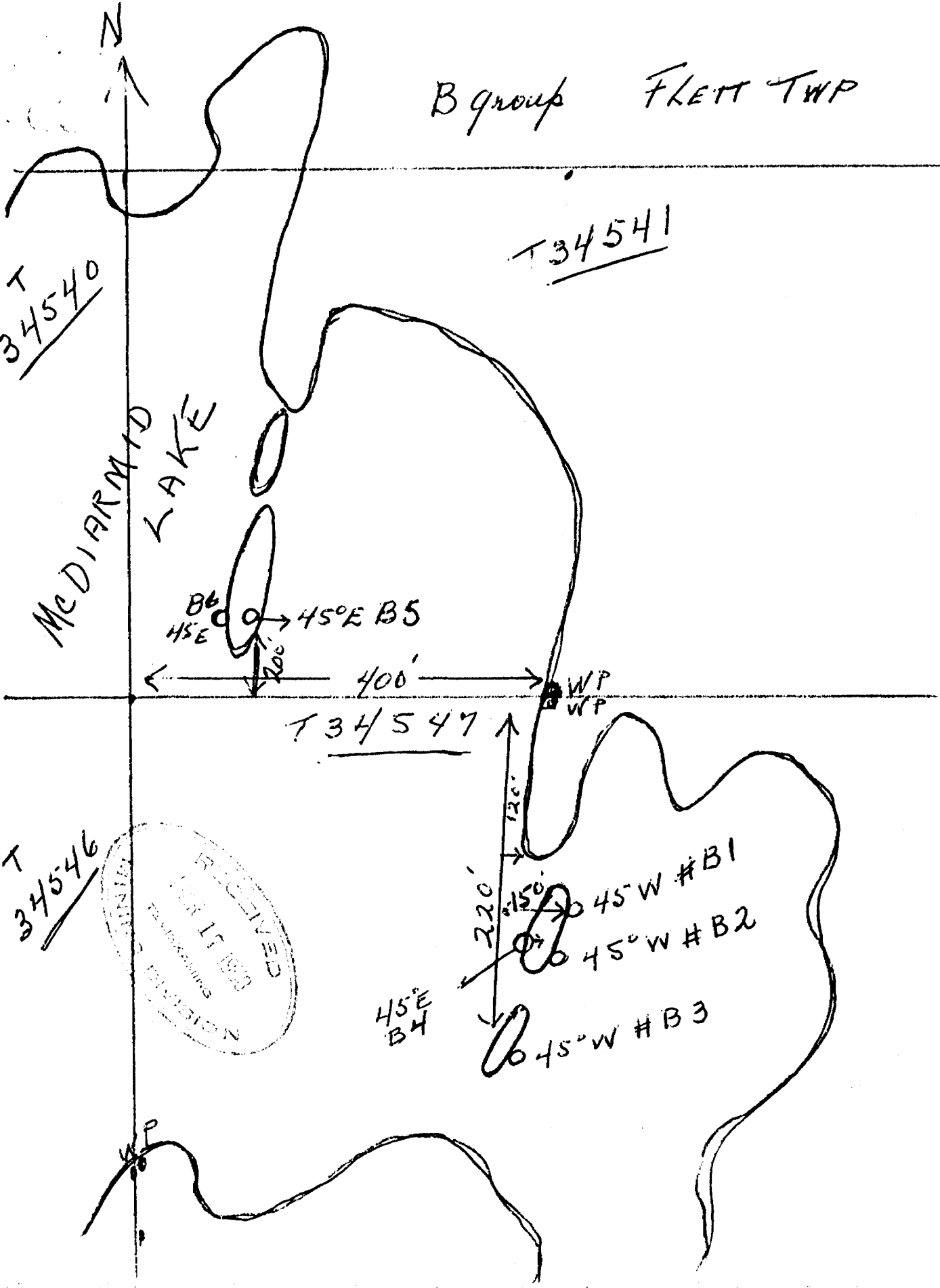
T34547

T
34546



45°E
B4

720'
150'
45°W #B1
45°W #B2
45°W #B3



B.Group

Location Flett Twp

Dip 45 E 45bW

Logged by Leo Reed North Bay, Ont

Description B-1 to B-6

B-1 45 W

0-110 ft Fine grain diabase with bands of fine sulphides
Varying in length from 6 inches to 12 inches also
odd bands of what appears to be serpentine associated
on the edges of the bands with magnetite

B 2 and

B 3

Formation is identical as of B.1

B.4

95 to 115

Formation also identical up to 95ft depth
core has large crystal of hornblend, some mica, and
some small crystal of magnetite, this core is not
strongly magnetic.

B.5

0 to 107

First 12 inches serpentine with bands of sulphides and
magnetite, than diabase fine grain and softer in texture
with bands to massive sulphides and very magnetic

B.6 45 E

0 to 25 ft

Coarse Gabbro ? with spots of Magnetite

25 to 100'

Fine grain diabase banded with sulphides, little pyrite
occasional stringers of quartz and core very magnetic.

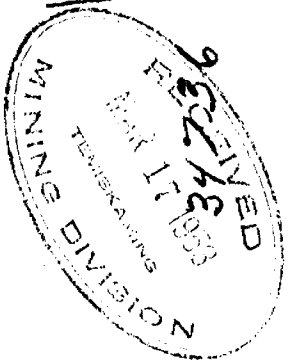
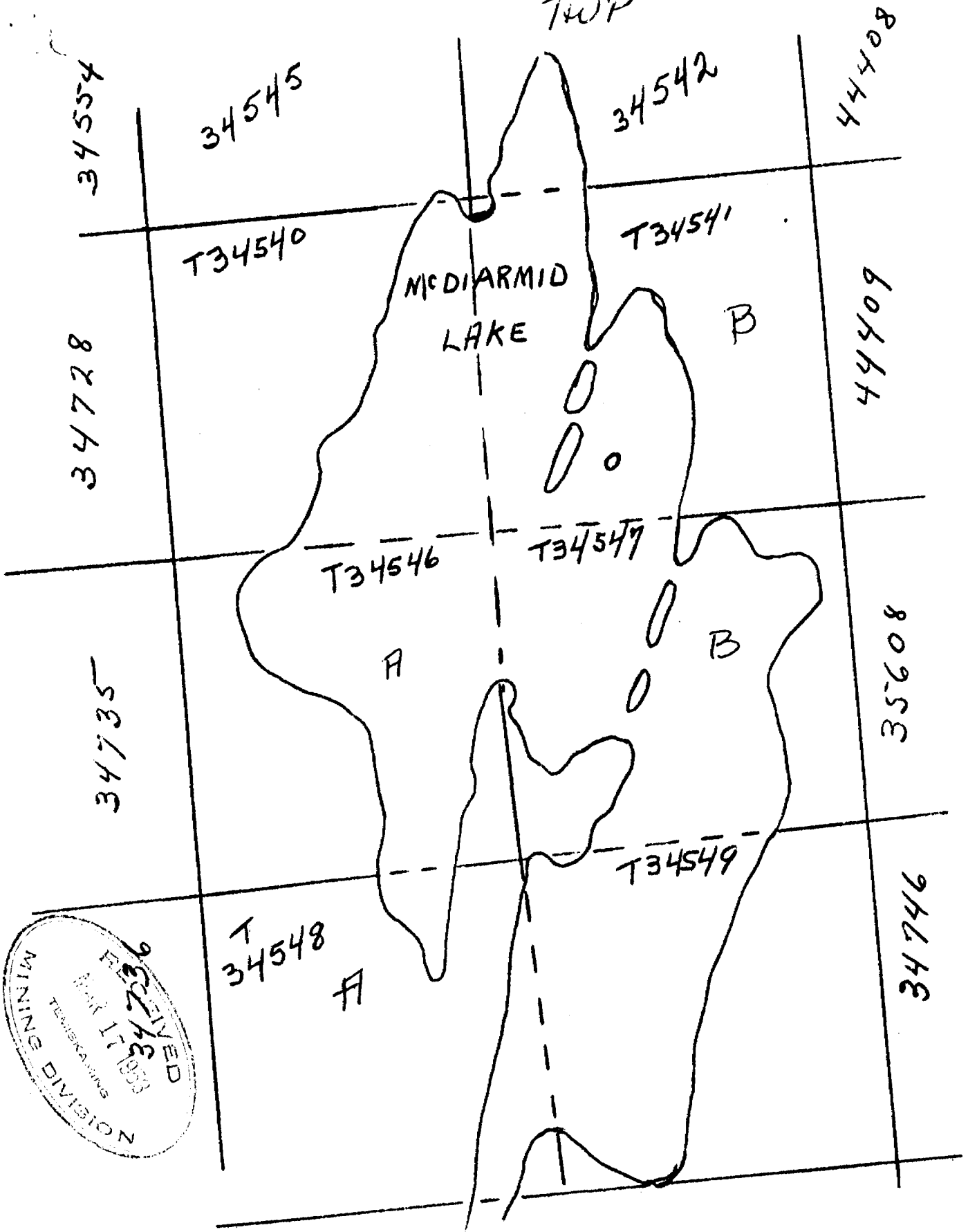
640 ft Note 2 2" pieces of core taken from B 5 for test

Leo Reed



Leo Reed

FLIETT
TWP



A Group.

MCDIARMID LAKE

B
34547

A
T 34546

A

A
T 34548

A

A(34549

200' → A7
100' → A6
200' → A5
100' → A4
300' → A3

POB
S.W.
300'
200'
100'
100'
200'
350'
A2-45W
A1-45E
S.E.



FLETT TWP

Location ; Flett Twp Claim # 34548

Description ; A group

Logged By Leo Reed North Bay Ont

Hole # A- 1 Dip; 45 E



Footage

Description

0' to 95'

Fine grain and massive diabase, banded throughout with stringers of fine sulphides with occasional stringers of serpentine, core is magnetic.

95' to 100'

Formation changes to coarse granular Gabbro,? core appears to have, some Mica, hornblend, and less magnetic.

A-2 45 degree W

0 to 75

Fine grain diabase, also with fine sulphides very magnetic.

75 to 76

Formation changes to coarse material

A-3 - #4 - #5 drilled 45 E

0' to end of holes

100

104

109

The first few inches rock is rather decomposed than back to it's natural colour being a fine grain diabase with stringers of sulphides very magnetic with bands of serpentine impergnated with pyrite and fine sulphides, core in general very magnetic.

Claim 34546

A-6 45 deg E 105 ft

0' to 20'

Rock coarse, with feldspar, hornblend, mica,

20 to 105

fine grain diabase, with bands and stringers of magnetite, and odd splash of pyrite.

A-7 45 E- 86 ft

0.22 ft

Coarse rock with feldspar, hornblen, mica, etc.,

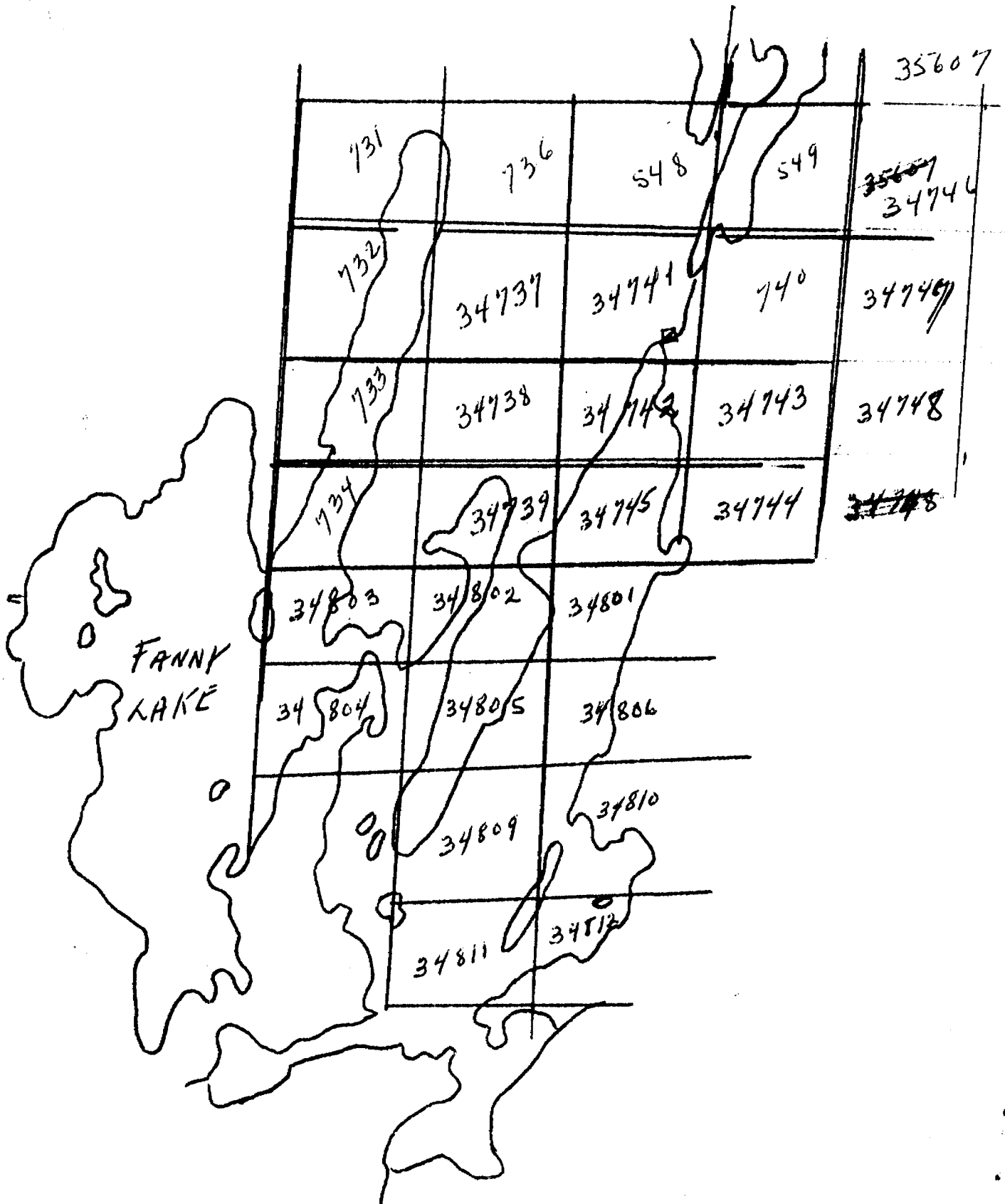
22 to 86'

Fine grain diabase, with stringers and bands of massive sulphides very magnetic.

Total footage A group 680 ft.

Leo L Reed

FLETT TWP.

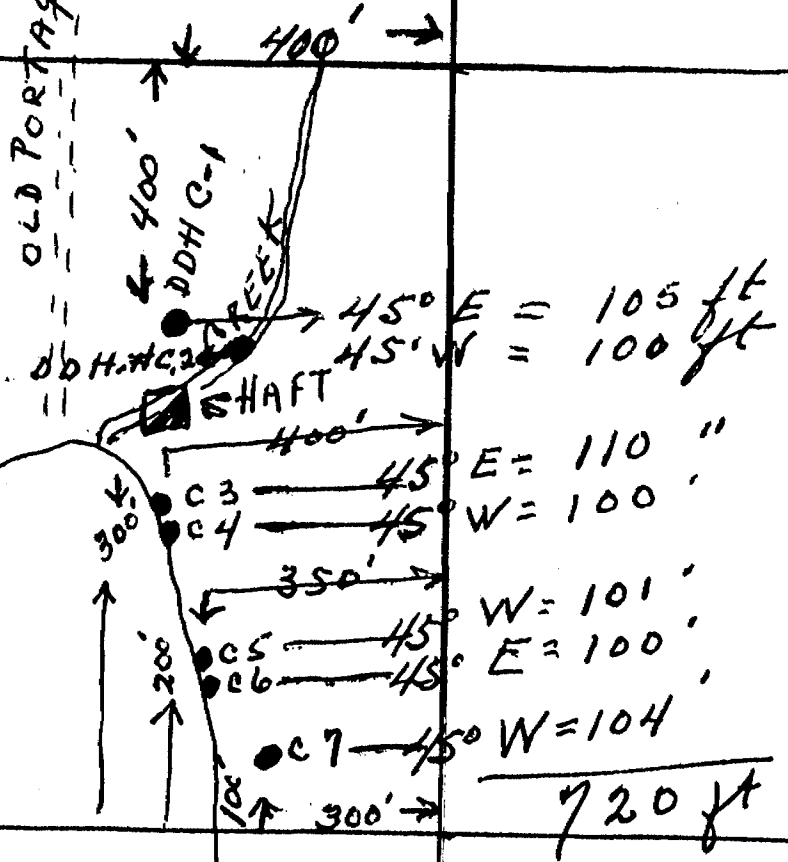


FLETT
TWP.

N. 1st

OLD PORTAGE

34941



34742

N.E. ARM
FANNY LAKE

34743

34745

34744

C Group

Location- Flett Twp
Claim # 34741
Description: C-1-2-3-4-5-6-7
Logged By Leo W. Reed

C-1 = 45 deg E. 105 ft

- 0 to 25 ft Diabase with very fine stringers of magnetite and specks of pyrite
25 to 50 Diabase with fine sulphides and odd stringers of quartz very magnetic.
50 to 75 Diabase very fine grain with splash of qtz, and odd specks of pyrite, magnetic around the pyrite
75 to 105 Coarser grain diabase, with hornblend, mica, and scattered specks of pyrite.

C-2 = 45 deg W- 100 ft

- 0 to 25 Fine Grain diabase with massive sulphides to fine stringers, and very magnetic.
25 to 50 Diabase, and sulphides, and little pyrite, core very magnetic around the sulphides.
50 to 100 Fine to coarser grain diabase, with splash of pyrite and odd stringers of sulphides, not heavily distributed.

C-3= 45 deg E- 110 ft

- 0 to 100 Fine grain diabase with bands of massive sulphides scattered pyrite, very magnetic.
100 to 110 coarse diabase, hornblend, mica. not so magnetic

C-4 = 45 deg W 100 ft

- 0 to 50 Diabase with bands of sulphides, very magnetic
50 to 100 Diabase much coarser, hornblend, mica, and odd specks of pyrite

C-5 = 45 deg W 101 ft

- 0 to 60 Diabase with bands of sulphides and odd splash of pyrite along the sulphides, core very magnetic along the bands of sulphides.
60 to 101 Diabase coarser intruded with splash of quartz and odd specks of pyrite

C-6 = 45 deg E 100 ft

0 to 100 Fine grain diabase with bands of massive to leaner sulphides very magnetic, with occasional spots of pyrite and odd stringers of quartz varying in width 1/16 " no other mineralization visible.

C-7 = 45 W 104 ft

0 to 40 Fine diabase, with bands of sulphides and very magnetic

40 to 104 Formation diabase coarser, with bands of quartz and scattered pyrite, and from 90 to 104 core well fracture and oxidized, (Probably due to hole being ~~taxxi~~ too close to rock surface)

Some of the core containing massive sulphides is being sent to Toronto for a general test.

Leo Reed

Group 1.

Holes. 3-4-5
6-7-8



Flett Township
Temiskaming Mining Division

T 34546

T 34547

T 35608

Handwritten notes:
1090 ft
at 1300 ft

TO No 8
TO No 7
TO No 6

T 34548

T 34549

T 34746

TO No 5
TO No 4
TO No 3

T 34741

T 34740

T 34747

T 34742

T 34743

T 34748

Scale - 4 INS = 20 fms

Signature: G. F. Morgan