



31M03NW0015 32 SOUTH LORRAIN

010

Diamond Drilling

Township of So. Lorrain

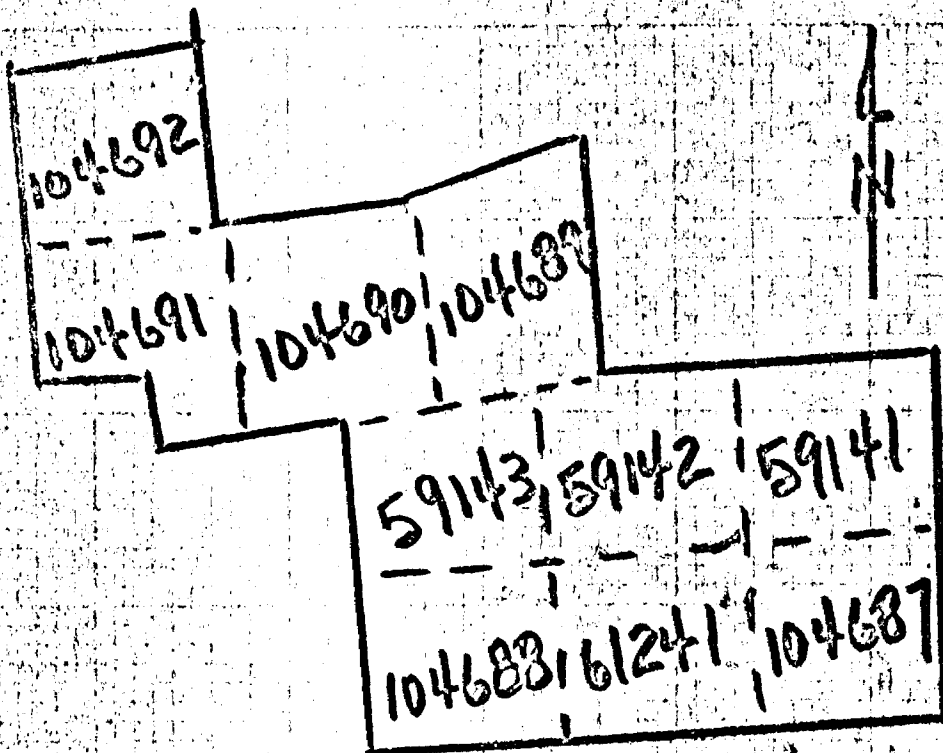
Report No: 32

Work performed by: Price-Bradley

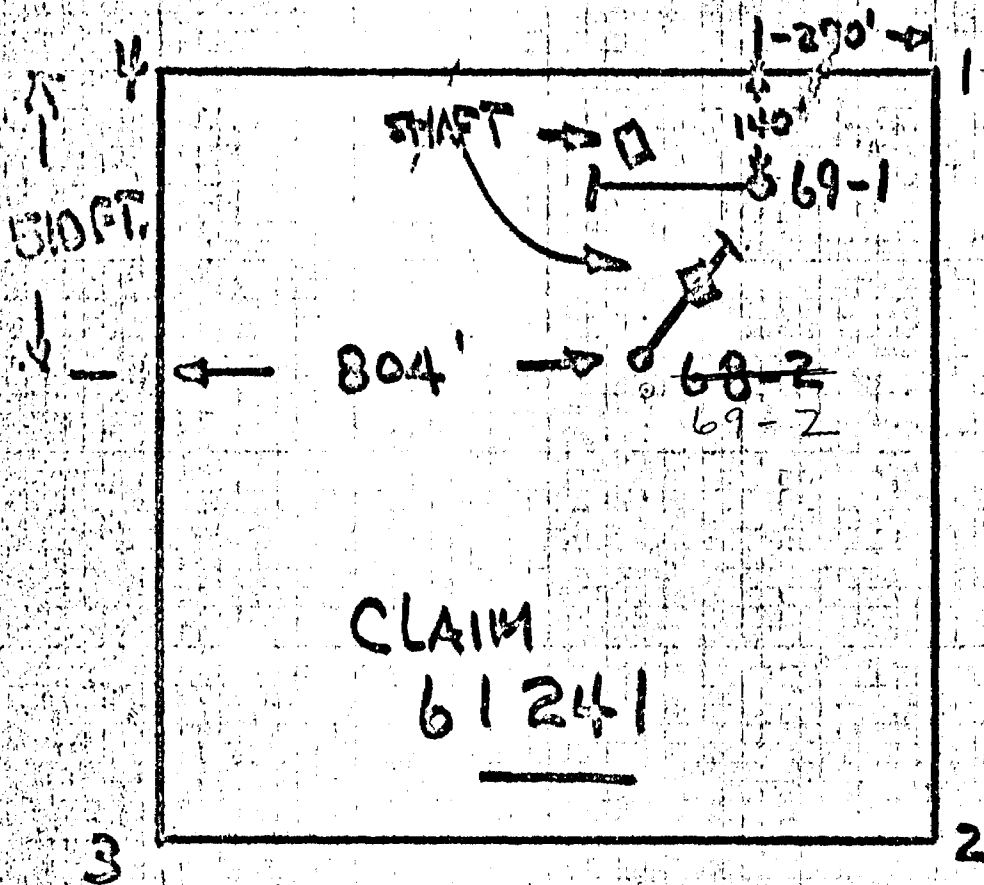
Claim No	Hole No	Footage	Date	Note
T 61241	69-1	796'	Jan/69	(1)
	69-2	1,023'	Feb/69	(1)

Notes:

(1) #31/69



PRICE. BRADLEY
 CLAIMS
 S. LORRAIN TWP
 COBALT
 SHOWING
 DRILL HOLES
 69-1 + 69-2



Claim 61241

PROPERTY Price-Bradley

South Lorrain Twp.

HOLE No. 69-1

290' East and 140' south of #1 Post 61241

LOCATION:

LATITUDE:

STRIKE: West - (270°)

PAGE No. 1

DEPARTURE:

DIP: Collar - 65°

ELEVATION:

DATE DRILLED: 20 Jan. - Feb. '69

PURPOSE: To test Bulldog Fault at depth of 500 ft. near junction with intersecting veins.

FOOTAGE	DESCRIPTION	SAMPLE NO.	WIDTH	ASSAY VALUE
0 - 19	CASING			
19 - 45	KREMATIN VOLCANIC Fragmental feldspar porphyry fragments (grey to buff coloured) in dark green matrix - sparsely mineralized with blebs & clusters of pyrite			
45 - 796	BASIC INTRUSIVE - coarse grained gabbroic-diabasic greenstone (so described by McIlwaine-ODM Map P.289)			
65	1/2" & 1/4" calcite & epidote - 45°/core	53	3"	TR
83	1/4" calcite & fractures - 45°/core	54	3"	TR
*97-102	4 x 1/4" calcite - 45°/core	55	6"	0.1
116-117	3 x 1/4" calcite - 60°/core	56	4"	0.1
* 123	1/2 - qtz. & calcite - 60°/core	57	1"	TR
* 106	1/2" calcite white Xline - 70°/core	58	1/2"	0.2
136	2 x 1/4 calcite - 70°/core white & wall rock inclusions	59	3"	0.4
138	1/4" calcite grey 45°/core and fracturing	60	3"	0.7
145	1/2" calcite white to pink - 60°/core	61	1"	1.7
151	1" irregular grey calcite - 60°/core	62	2"	0.9
165	2 x 1/4 calcite 30° and 45°/core	63	3"	0.6
	Intrusive is light coloured & finer grained near the veins			
188	4" white quartz			
203	6" white quartz - 60°/core			
209	1/4" & 2 x 1/8" calcite - 60°/core	64	3"	0.1
214-220	Numerous 1/8" & 1/4" stringers calcite 45&60°/core	65	6"	TR
248	3/4" irregular grey calcite - 60°/core	66	1"	TR.
265-270	fracture zone - wallrock fine grained 10 x 1/4" calcite 30° - 45°/core	67	12"	TR
	275-355 Variable textured but generally coarse grained colour varying from dark to flesh coloured			
355 - 400	STOCKWORK OF CALCITE VEINS & STRINGERS 1/4" to 1" wide 45°/core to 70°/core			
	355-365 around 355 change from coarse basic	68	12"	NIL
	365-390 intrusive to fine grained hornblende	69	12"	TRACE
	395-400 syenitic believed to be a phase of the same	70	0.1 6"	TRACE
430	1/2" irregular calcite - 60°/core intrusive.	71	2"	1.1
435	1" banded qtz. & calcite - 45°/core	72	4"	0.2
448-450	3" & 2" & 1/2" white calcite - 30°/core	73	8"	TR
455-465	Broken - vugy - leached core 2' ground blocky			
475-480	6 x 1/4" to 1/2" calcite veins 30° to 60°/core	74	8"	TR
503	3/4" irregular calcite	75	4"	TR
	AROUND 465 becoming uniform dark diabasic texture, medium grained cut by numerous calcite stringers ± 1/8"-1/4" at random angle			
528-530	1/2 & 2 x 1/4 white calcite 45 - 60°/core	76	4"	0.3
534 - 542	Vugy - leached - blocky rusty			

DRILLED BY _____

SIGNED

L. J. Cunningham. B.Sc., P.Eng.

Claim 61241
South Lorrain Twp.

PROPERTY Price-Bradley

HOLE No. 69-1

LOCATION: _____
LATITUDE: _____
DEPARTURE: _____
ELEVATION: _____

STRIKE: _____
DIP: _____
DATE DRILLED: _____

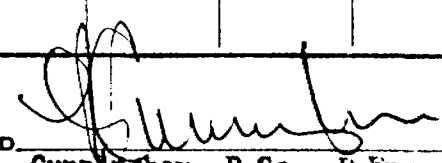
PAGE No. 2

CLAIM _____

PURPOSE: _____

FOOTAGE	DESCRIPTION	SAMPLE NO.	WIDTH	ASSAY VALUE
528-30	1/2 + 2 x 1/4" white calcite 45-60°/core	76	4"	0.3
534 - 545	Vugy, leached, blocky, rusty			
545 - 560	Massive, more competent grey uniform diabasic			
550	1/4" calcite & qtz - 45°/core	77	1"	0.4
560 - 615	Drummed Broken, vugy, leached, blocky zone, rusty, brecciated, contains f.g. dark fragments in light grey diabasic intrusive - 5% ground core			
572	1" qtz. broken appears 5-10°/core			
594-597	3 x 1/4" vugy rusty calcite - 30°/core	78	6"	
607	1/2" irregular calcite - 70°/core a little chalcopryrite	79	1"	0.2
614	Rusty zone with qtz. - 30°/core some carbonate fine pyrite	80	4"	NIL
615 - 629	Massive uniform			
629 - 633	Fine grained dark acidic dike? Lower contact 10°/core			
636	Broken calcite & 1/4 calcite - 60°/core & blebs of pyrite	81	3"	0.2
652-3	6" grey carbonate zone well mineralized with crystalline pyrite & reddish feldspathic alteration plus 2 x 1/4" calcite - 60°/core	82	8"	0.1
654	2" grey banded calcite & quartz - 30°/core good looking vein	83	2"	NIL
655	1/2" pink calcite - 30°/core	84	2"	TR
657	1/4" calcite - 60°/core	85	1"	0.3
660-665	Silicified shear zone - 30-45°/core in part brecciation and scattered light pyrite			
660-663	silicified zone & pyrite - 30°/core	86	18"	0.1
665	1/2" calcite & qtz. - 60°/core	87	4"	0.2
670	1/2" calcite - 60°/core	88	1"	0.3
687	3/4" + 2 x 1/4" calcite - 60°/core white Xline	89	4"	0.2
692	3 x 1/4 calcite - 60°/core around 700 becoming blocky vugy, rusty especially 720-730 rusty, fracturing at low angle to core ± 10°	90	4"	0.6
724-5	2" vugy, rusty calcite & qtz - 10°/core	91	4"	TR
760-772	Broken, rusty rusty fractures 5°-10°/core axis			
775	1/4" irregular calcite - 45°/core	94	4"	TR
780	2 x 1/4" calcite - 45°/core	95	5"	0.1 (TR)
785	1" irregular splash of calcite with seams of pyrite	97	3"	0.4
792	1/4" calcite - 60°/core	96	4"	0.2
794	END OF HOLE			
796				

DRILLED BY: Barron Diamond Drilling

SIGNED: 
L. J. Cunningham, B.Sc., P.Eng.
Mining Engineer

PROPERTY Price-Bradley

350' @ S 35° W of 100' Shaft
 LOCATION (CR) -510' S & 804' E of #4 Post 61241
 LATITUDE: _____ STRIKE: N 35° E (Ant.)
 DEPARTURE: _____ DIP: Collar - 65° 200' 55°
 ELEVATION: _____ DATE DRILLED: 10 Feb. 1969

HOLE NO. PB 69 2

PAGE NO. 1

CLAIM 61241

PURPOSE: To test Bulldog Fault below shaft

FOOTAGE	DESCRIPTION	SAMPLE NO.	WIDTH	ASSAY VALUE
0 - 8	CASING			
8 - 164	VOLCANIC AGGLOMERATE coarse grained whitish fragments in altered tuff			
75	3/4" banded calcite - 45°/core	98	2"	Tr
79	1/2" calcite + 1/4 calcite - 45°/core	99	2"	Nil
82	1/2" " " - 30°/core	100	3"	Nil
116	1/2" + 2" of irregular calcite 30°/core	101	8"	0.2
122	2 x 1/4 calcite - 45°/core	102	2"	Tr
139	1/2" calcite 45°/core	103	2"	Tr
149	1" calcite - 20°/core cemented breccia	104	4"	0.6
161-2	numerous calcite stringers 1/2 to 1/4" wide 20-30°/core	105	8"	0.6
164-173	Rhyolite dike - buff-grey			
173 - 180	VOLCANIC AGGLOMERATE			
175	1" banded calcite - 45°/core	106	2"	0.3
177	3/4" " " - 45°/core	107	2"	0.3
180 - 182	RHYOLITE DIKE buff - grey			
182	1-1/2 brecciated calcite 45°/core	108	3"	Nil
182 - 197	VOLCANIC AGGLOMERATE			
187	4" irregular calcite - 30°/core	109	6"	Tr
197 - 215	VOLCANIC LAVA f.g. basic porphyritic flow			
195	1/8 calcite & stringers 30°/core	110	4"	0.4
215 - 225	F.G. BASIC METAVOLCANIC LAVA			
216	2" calcite - 60°/core	111	4"	Tr
225 - 237	FELDSPAR PORPHYRY INTRUSIVE			
219	irregular white to pink calcite - 30°/core	112	8"	Tr
225	vugy qtz. & calcite + 2" wide broken	113	2"	0.2
229	white qtz & brown silicification plus a little calcite	114	4"	0.1
238-254	BASIC INTRUSIVE dark green fine grained DIABASIC chilled contacts 30°/core			
254 - 262	VOLCANIC AGGLOMERATE			
238	1" irregular banded calcite - 30°/core	115	4"	2.0
260	1/2" banded calcite - 30°/core	116	1"	Tr
262 - 361	FELDSPAR PORPHYRY dark dense f.g.			
289	1/4 calcite - 30°/core	117	1"	Tr
297	1/2" irregular qtz. & calcite	118	3"	Tr
303	3" calcite cemented breccia	119	3"	Tr
361	1/4 brecciated calcite & minor pyrite - 30°/core	120	1"	0.3
361 - 404	VOLCANIC AGGLOMERATE with some tuff grey-green porphyritic basic tuff bed or possible a dike?			
392-4	4" qtz. & calcite - 30°/core with wall rock inclusions	121	6"	Nil
404 - 445	BASIC TUFF HORIZON OR DIKE - dark grey green medium grained diabasic texture 435-445 fine grained and porphyritic			
415-430	Numerous calcite stringers & fractures 30°-60°/core selective sample of fracturing	122	12"	Nil
445 - 487	BASIC VOLCANIC AGGLOMERATE light greenish grey with dark green basic tuff interbedded @ 30°/core			

DRILLED BY: Barron Diamond Drilling

SIGNED: L. J. Cunningham, B.Sc., P.Eng.

PROPERTY Price-Bradley

HOLE No. PB 69 2

LOCATION: _____

LATITUDE: _____

DEPARTURE: _____

ELEVATION: _____

STRIKE: _____

DIP: _____

DATE DRILLED: _____

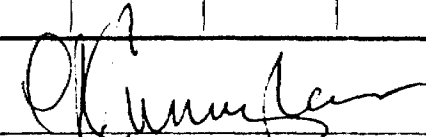
PAGE No. 2

CLAIM 61241

PURPOSE: _____

FOOTAGE	DESCRIPTION	SAMPLE NO.	WIDTH	ASSAY VALUE
454	5" calcite - 45°/core with wallrock inclusions	123	6"	N11
487 - 501	ACID TUFF dark grey porphyritic			
501 - 514	BASIC VOLCANIC AGGLOMERATE with some basic tuff			
487	1/2" + 1/4 banded qtz. & calcite - 30°/core	124	6"	Tr
514 - 533	INTERMEDIATE TO ACID MEDIUM GRAINED DIKE grey-green in part porphyritic			
516	1/2" + 1/4 pink carbonate - 45°/core	125	4"	0.1
533 - 536	LAHITOPHYNE DIKE core soft, broken, earthy			
534	Qtz-calcite stringers 30°/core	126	4"	Tr
536 - 642	BASIC VOLCANIC AGGLOMERATE with minor amounts of dark green basic tuff			
557	3/4 brocciated calcite - 30°/core	128	3"	N11
563	Qtz & calcite irregular banded over 6"	127	7"	Tr
500	1/4 qtz & calcite with few blebs pyrite & galena 20°/core	129	4"	0.9
595	2" banded reddish qtz & calcite - 30°/core	130	3"	Tr
642 - 662	PREDOMINANTLY DARK GREEN BASIC TUFF with minor amounts of coarse grey agglomerate			
644-648	numerous 1/8 - 1/4" calcite & qtz stringers 70°/core	131	8"	Tr
648-649	white vein quartz			
655	2" vein quartz white			
662 - 694	BECOMING F.G. DARK GREEN UNIFORM BASIC POSSIBLE DIKE broken, blocky, core in fragments rusty fractures			
694 - 746	VOLCANIC AGGLOMERATE dark green basic minor interbedded tuff bands - 45°/core			
695	4" white to grey banded calcite - 30°/core	132	6"	
746 - 806	INTERMEDIATE VOLCANIC fine grained light to dark grey colour sheared & carbonatized in parts			
770	6" white hard calcite pink to white - 45°/core	133	8"	
790	6" white banded calcite - 30°/core	134	6"	
806 - 876	VOLCANIC AGGLOMERATE dark green basic coarse grained with acid inclusions minor bands of schist (tuff) - 45°/core			
832	1/8" calcite fractures 10° - 30°/core	135	6"	
836-840	4 x 1/4" calcite - 30° - 60°/core	136	6"	
847	3' ground core			
858	3/4" banded calcite 60°/core	137	1"	
871	1" vugy calcite - 45°/core coarse pyrite	138	1"	
876	Acid intrusive coarse porphyrophyry dike or flow?			
876-1015	RIHYOLITE PORPHYRY flows with narrow sheared basic tuff bands as follows: 918-919; 920-21; 924-25			
	932 - 3 x 1/4" calcite - 45°/core	139	6"	Tr
1015-1017	VOLCANIC AGGLOMERATE			
1017-1023	BASIC SHEARED TUFF - 70°/core			
1016	1" qtz + calcite - 60°/core	140	1"	Tr
1021	1/2" calcite + blebs of bronzy pyrite	141	2"	Tr
1023	END OF HOLE			

DRILLED BY Barron Diamond Drilling

SIGNED 
L. J. Cunningham, B.Sc., P.Eng.