



31M04NE0032 26 SOUTH LORRAIN

010

Diamond Drilling

Township of So Lorrain

Report NO: 26

Work performed by: Keeley-Fronteir Mines

Claim NO	Hole NO	Footage	Date	Note
T 46400	1		Dec/61	

Notes:

T 46400

South
Horrair Twp.

12-1-32

DIAMOND DRILL RECORD



PROPERTY Keeley-Frontier Mines Limited (Claim # T.46400) HOLE No. 1

SHEET NUMBER 1 SECTION FROM TO STARTED December 27, 1961.

LATITUDE 7360' N. DATUM 540' Southerly of post #1 COMPLETED January 13, 1962.

DEPARTURE 4940' E. BEARING S. 69 degrees E. (Ast). ULTIMATE DEPTH 200.0'

ELEVATION 965' (approx). DIP at collar, -45 degrees. PROPOSED DEPTH 200.0'

DEPTH FEET	FORMATION	SAMPLE NO.	FROM	TO	WIDTH	ASSAY VALUES			
0' to 2.5'	Casing:- 0'- 1.0' above surface								
	1.0'-2.0' overburden								
	2.0'-2.5', bedrock.								
2.5' to 200.0'	<u>Keewatin:-Basic Flow Rock</u>								
	Fine to very fine grained. Dark								
	to lighter grayish colors. Locally								
	some irregular epidote alteration								
	and irregular streaky effect at								
	around 45 degrees to core.								
	Few scattered chloritic slips								
	and fractures, some in places								
	showing thin pyrite smears. A								
	few scattered grains of pyrite								
	and pyrrhotite.								

NORTHERN MINER FORM 505 REV./54

DRILLED BY Elmer Parcher - Cobalt, Ontario. SIGNED

H. Hammerstrom

DIAMOND DRILL RECORD

PROPERTY Keeley-Frontier Mines Limited (Claim # T.46400) HOLE No. 1

SHEET NUMBER 2 SECTION FROM _____ TO _____ STARTED _____

LATITUDE _____ DATUM _____ COMPLETED _____

DEPARTURE _____ BEARING _____ ULTIMATE DEPTH _____

ELEVATION _____ DIP _____ PROPOSED DEPTH _____

DEPTH FEET	FORMATION	SAMPLE NO.	FROM	TO	WIDTH	ASSAY VALUES			
2.5' to 200.0'	Keewatin-(Continued): The rock in general is very hard and brittle. A few small patches of light brownish alteration occurs in places. <u>"Sections of Note"</u>								
17.0'	1/16" white calcite veinlet with chalcopyrite at 37 degrees.								
	41.0' to 42.0' lost core.								
45.6'	1/8" to 1/4" chloritic seam with some coarse pyrite								

NORTHERN MINER FORM 505 REV./54

DRILLED BY Elmer Parcher - Cobalt, Ontario.

SIGNED

H. Hammerstrom

DIAMOND DRILL RECORD

PROPERTY Keeley-Frontier Mines Limited (Claim # T.46400) HOLE No. 1

SHEET NUMBER 3 SECTION FROM _____ TO _____ STARTED _____

LATITUDE _____ DATUM _____ COMPLETED _____

DEPARTURE _____ BEARING _____ ULTIMATE DEPTH _____

ELEVATION _____ DIP _____ PROPOSED DEPTH _____

DEPTH FEET	FORMATION	SAMPLE NO.	FROM	TO	WIDTH	ASSAY VALUES			
	<u>Sections of Note: (Continued).</u>								
	<u>47.0' to 48.0' lost core.</u>								
	<u>48' to 49' Fractured Keewatin.</u>								
	<u>114.0' 1/4" white calcite with chlorite at 40 degrees to core.</u>								
	<u>129.5' 1" greyish calcite at 40 degrees to core.</u>								
	<u>133.5' 1/4" light pink calcite with small angular wallrock inclusions at 25 degrees to core.</u>								

NORTHERN MINER FORM 505 REV./54

DRILLED BY Elmer Parcher - Cobalt, Ontario.

SIGNED _____

H. Hammerstrom

DIAMOND DRILL RECORD

PROPERTY Keeley-Frontier Mines Limited (Claim # T.46400) HOLE No. 1

SHEET NUMBER 4 SECTION FROM _____ TO _____ STARTED _____

LATITUDE _____ DATUM _____ COMPLETED _____

DEPARTURE _____ BEARING _____ ULTIMATE DEPTH _____

ELEVATION _____ DIP _____ PROPOSED DEPTH _____

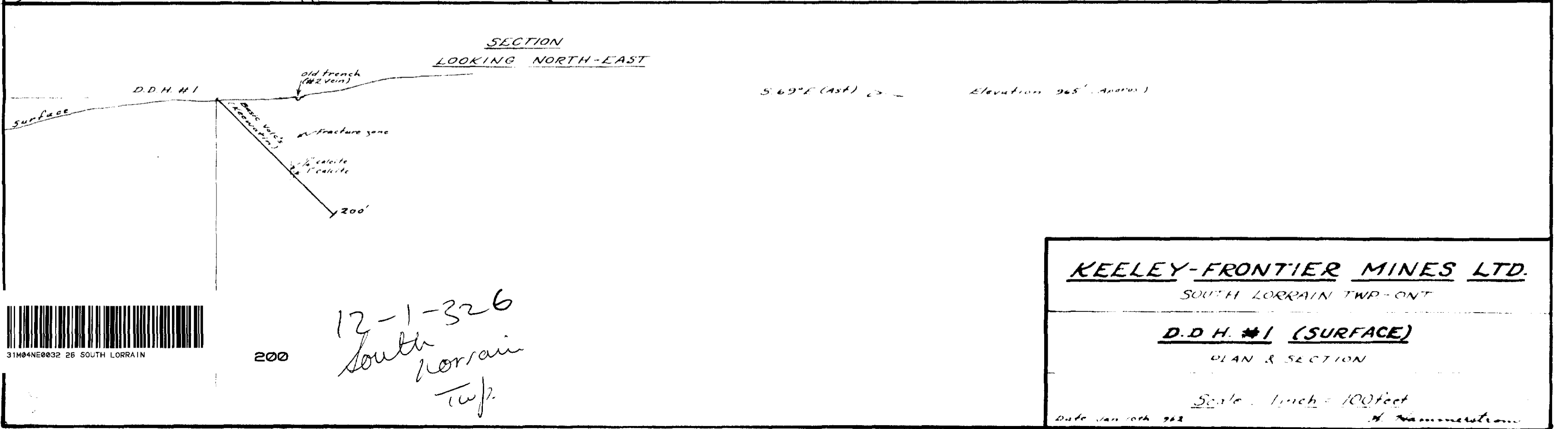
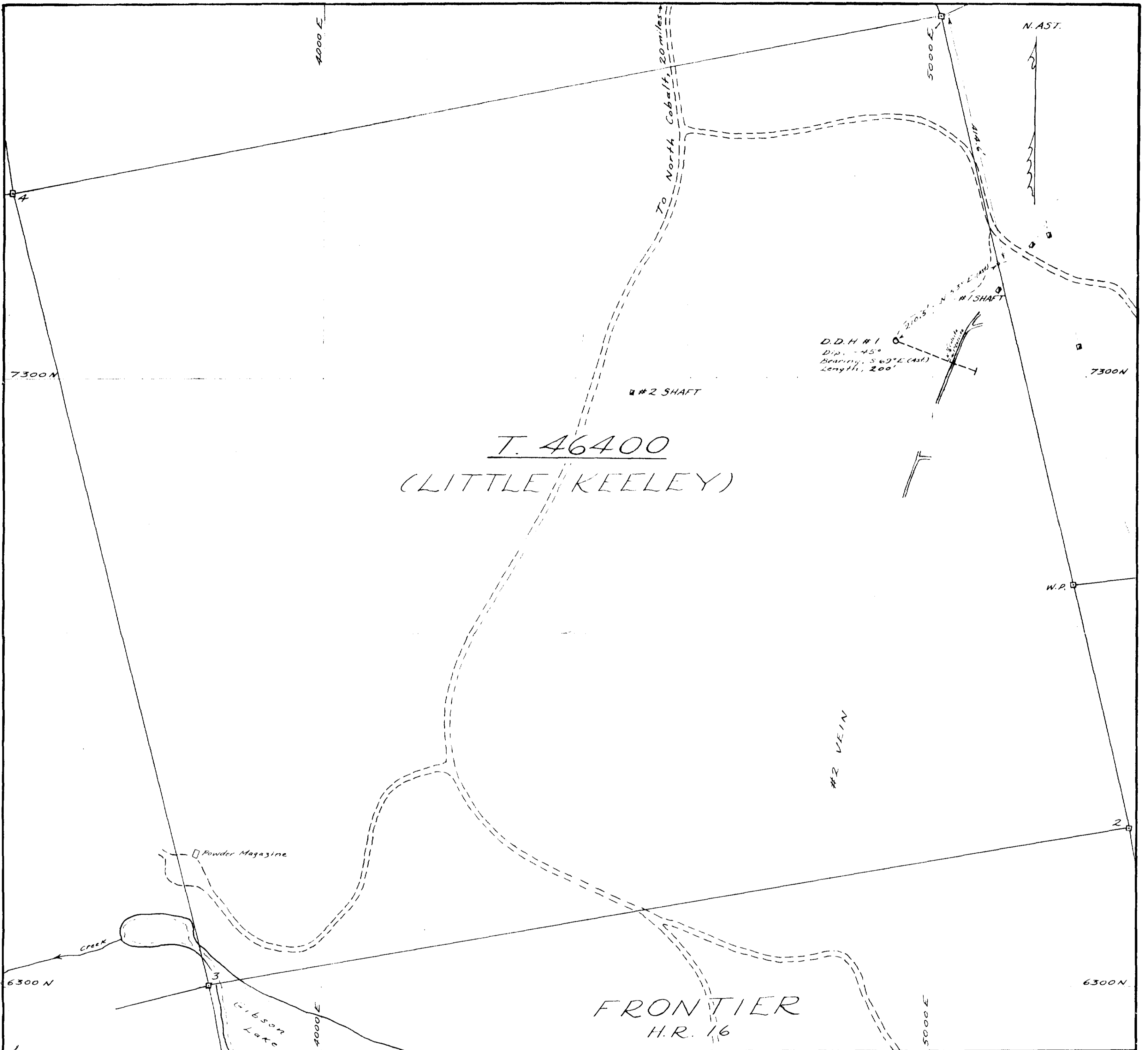
DEPTH FEET	FORMATION	SAMPLE NO.	FROM	TO	WIDTH	ASSAY VALUES			
	<u>Sections of Note: (Continued).</u>								
<u>134.0'</u>	<u>1" crushed, feldspathized Keewatin at about 45 degrees to core. Some whitish calcite and dark green chlorite as breccia filling, a few small grains of cobalt arsenides and some fine pyrite scattered thru.</u>								
<u>178.0'</u>	<u>1/2" glassy, greenish quartz at 60 degrees to core.</u>								
<u>200.0'</u>	<u>End of hole.</u>								

NORTHERN MINER FORM 505 REV./54

DRILLED BY Elmer Parcher - Cobalt, Ontario.

SIGNED _____

W. Hammerstrom



KEELEY-FRONTIER MINES LTD.
 SOUTH LORRAIN TWP - ONT.
D.D.H. #1 (SURFACE)
 PLAN & SECTION
 Scale: 1 inch = 100 feet
 Date: Jan 10th 1922

12-1-326
 South Lorrain
 Twp.



200