



31M04NE0035 34 SOUTH LORRAIN

010

Diamond Drilling

Township of South Lorrain

Report N^o: 34

Work performed by: James Price

Claim N ^o	Hole N ^o	Footage	Date	Note
T 56455	1	106'	Aug/66	(1)
	2	109'	May/68	(1)
	5	103'	Sept/70	(1)(2)

Notes:

(....) date placed on file

(1) (Aug/73)

(2) 237/70

Post # 4

1400'

Post # 1

100'

77' 106'
107°M 90°M

No. 1 D.D.H

1070'

BELLELLER PROPERTY
SOUTH LORRAIN TWP.
ASSESSMENT WORK
Aug. 29th 1966.

1320'

Post # 3

1475'

Post # 2

CLAIM T- 56455

SOUTH LORRAIN TWP.

DIAMOND DRILL HOLE # 1 - 106' IN LENGTH

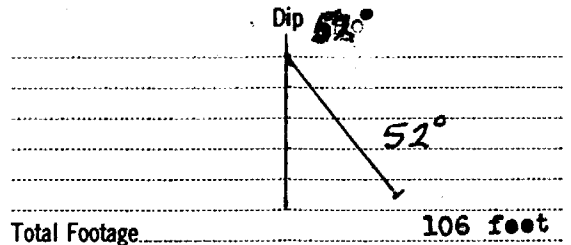
BEARING 90°M DIP. 52°

100 SOUTH & 77' AT 107°M FROM # 4 POST.

DIAMOND DRILL RECORD

Hole No. 1 Sheet No. 1

Property T- 56455
 Location South Lorrain Twp.
 Latitude _____
 Departure 90° M true east
 Bearing _____



Elev. Collar _____
 Datum _____
 Date Started August 5th, 1966
 Date Completed August 11th, 1966.
 Drilled by James. H. Price
 Logged by Sol Waisberg M.A.Sc

Footage		Formation	Sample Number	Sample Footage	Sample Width	Gold Sample	Gold Sludge	Remarks
From	To							
0	106	Andesite - fine grained considerable silicification 0 - 25' 50% of this section silicified and mount along fractures At 28' 1/2" Qz 70% C/A from 26' to 26.8' vein material with arsenopyrite and smeltite 32 to 33 feet silicified section. 36.5 to 37.5 silicified shear 45° C/A 39.2 Qz - vein 2" wide. 44.0 to 45.1 silicified section. 46.5 - 2" test core. 46.6 to 46.9 silicified section. 59.0 to 59.7 with slight smeltite (calcite) At 64.0' - 6" silicified section. 45° C/A 66.2 to 66.5 test core 70.0 to 72.1 silicified 85.0 - 2" test core 86.1 feet 3" test core. Occasional silicified sections to 106 feet. end of hole 106 feet. 106	1	26' to 26.8'	Ag. trace			
			2	59.0 to 59.7	Ag. trace			

TIMISKAMING
MINING DIV.

RECEIVED

AUG 30 1966

AM 7 8 9 10 11 12 1 2 3 4 5 6 PM

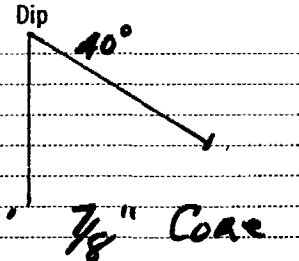
Date of Examination August 27th, 1966.

S. Waisberg M.A.Sc.

DIAMOND DRILL RECORD

Hole No. 2 Sheet No. 1

Property T-56455
 Location 310' South 90' East of #4 Post
CLAIM - T-56455 SOUTH LORRAIN TWP
 Latitude _____
 Departure _____
 Bearing S. 80° W



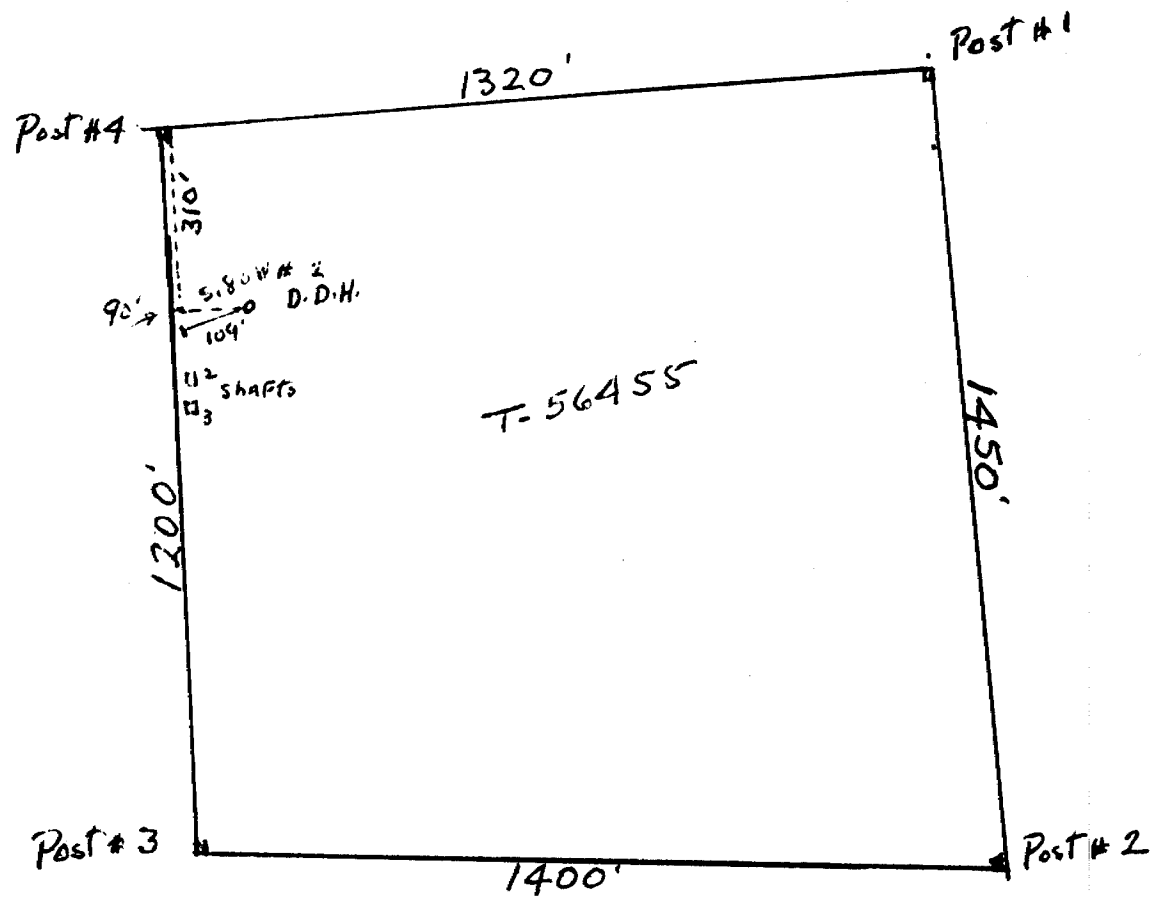
Total Footage 109' 7/8" Core

Elev. Collar _____
 Datum _____
 Date Started MAY 12th 1968
 Date Completed _____
 Drilled by J. H. Price
 Logged by J. H. Price

Footage		Formation	Sample Number	Sample Footage	Sample Width	Gold Sample	Gold Sludge	Remarks
From	To							
0	25	Keewatin BLACK Cherty 2" greyish Calcite between 21'6" - 21'8"						
25	50	Keewatin (3/4" Calcite at 42') 1/4 Calcite at 44'						
50	75	Keewatin. With bands of ALTERATION & QTZ 1" QTZ STRINGER AT 51' 10"						
75	100	" 5" OF COARSE MATERIAL BETWEEN 94'9" - 94'9" 1/4" QTZ AT 96'						
100	109	" 1/4" QTZ AT 106' 1/8" " " 108' END OF hole 109 Feet.						

Date of Examination MAY 22nd 1968

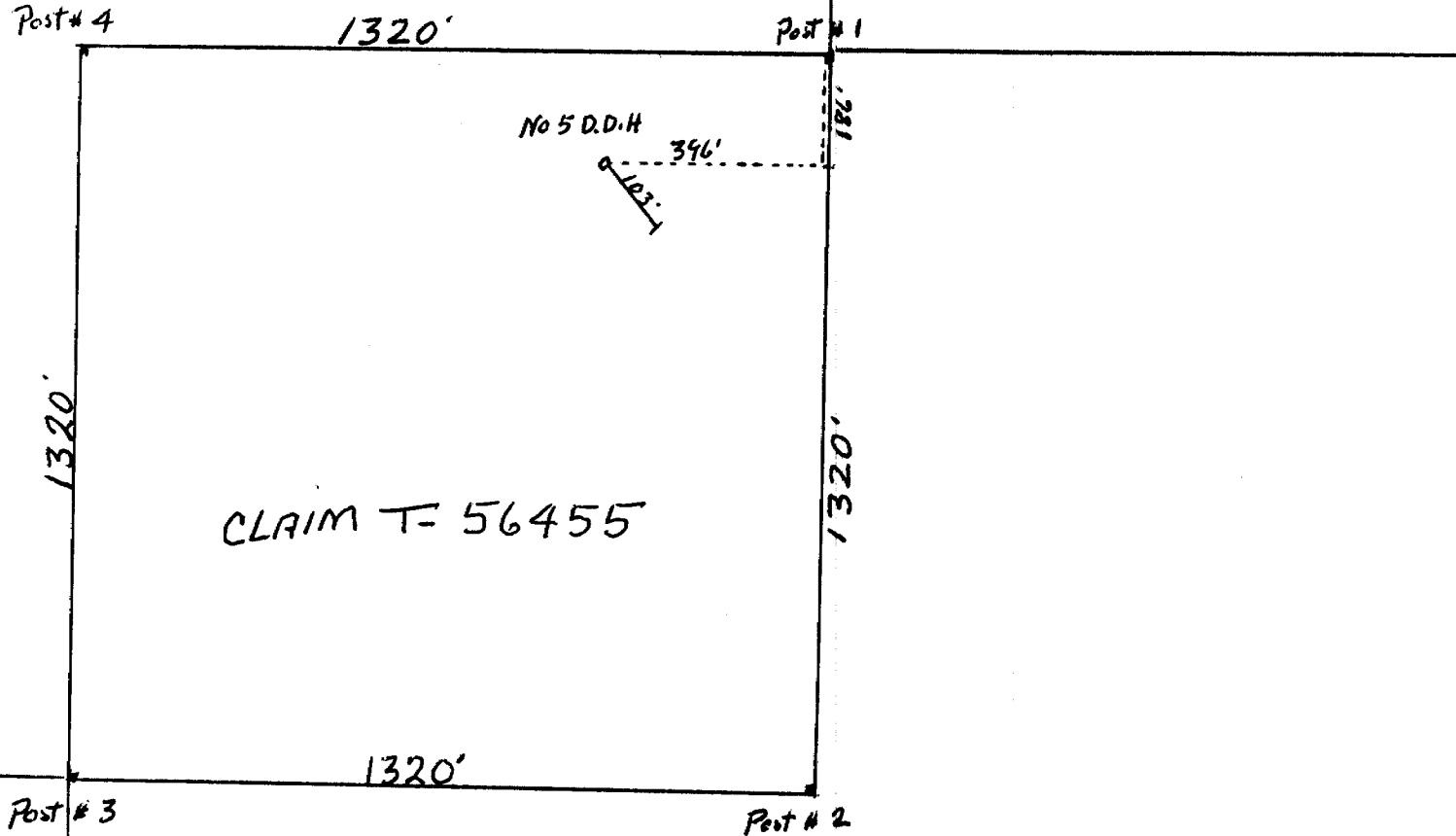
J. H. Price



NUMBER 2 DIAMOND DRILL HOLE
 CLAIM T-56455
 SOUTH LORRAIN TWP.
 ASSESSMENT WORK MAY-1968.

Signed
James J. [Signature]

L-248118



CLAIM T-56455

~~L-248118~~

DIAMOND DRILL HOLE # 5 ON CLAIM # T-56455
FOR ASSESSMENT WORK CREDIT TO CLAIM L-248118

JAMES H. PRICE
A.C. - B-19919

James H. Price

CLAIM #

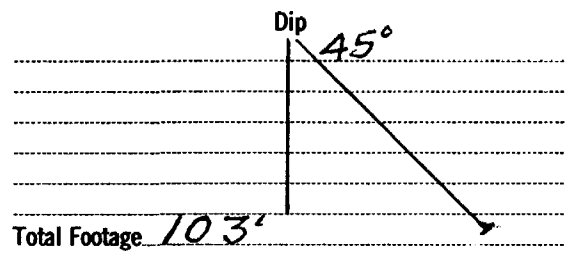
DIAMOND DRILL RECORD

Hole No. 5 Sheet No. 1

Property ~~L-248118~~ T-56455

Location SOUTH LORRAIN TWP

Latitude 186' South 396' West of #1 Post.
 Departure SOUTH - 33° EAST



Elev. Collar _____
 Datum _____
 Date Started Sept. 2nd. 1970
 Date Completed Oct. 3rd. 1970
 Drilled by J. H. Price
 Logged by J. H. Price

Footage		Formation	Sample Number	Sample Footage	Sample Width	Gold Sample	Gold Sludge	Remarks
From	To							
0	25	Keewatin - Broken Material with Hemitite stains						
25	50	Keewatin - black Cherty with Hemitite stains						
50	68	Keewatin - 1/2" Calcite vein at 52' " stringer " 54' 1/2 " " 55'						
68	75	diabase						
75	103	" - Calcite stringers at 77 1/2 77.5' 3/4" " vein " 91.8' 1/2" Aplite dike " 99.5' 1" " " 102' 1/4 " " " 102.8'						
		END OF Hole 103 Feet.						

J. H. Price

Date of Examination October 3rd 1970