



31M04NE9712 16 GILLIES LIMIT

010

### Diamond Drilling

Township of GILLIES LIMIT (S.P.T.)

Report No: 16

Work performed by: Nickel Rim Mines

Claim No	Hole No	Footage	Date	Note
T.52454	1	200'	Dec/63	
	3	306'	Dec/63	
	4	234'	Jan/64	
	5	746'	Jan/64	
	8	726'	Feb/64	
	9	545'	Feb/64	
T.52505	2	409'	Dec/63	
T.52453	6	360'	Jan/64	
	7	480'	Jan/64	
	10	250'	Mar/64	
T.52504	6	800'	July to Aug/65	
	7	750'	Aug/65	
L. 263837	71-3	232'	July/71	
L. 263901	71-4	301'	Aug/71	
	71-9	149'	Sept/71	
T.53537	71-6	165'	Sept/71	
	71-7	103'	Sept/71	
	72-1	150'	Oct/72	(1) (2)
	72-2	125'	Oct/72	(1) (2)
	72-3	125'	Oct/72	(1) (2)
	72-4	137'	Oct/72	(1) (2)
T.263910	71-8	133'	Sept/71	

Notes: (....)date placed on file

(1) Exploration Assistance Program 1972

(2) (Aug/73) 75/73- autositives enclosed

Diamond Drilling

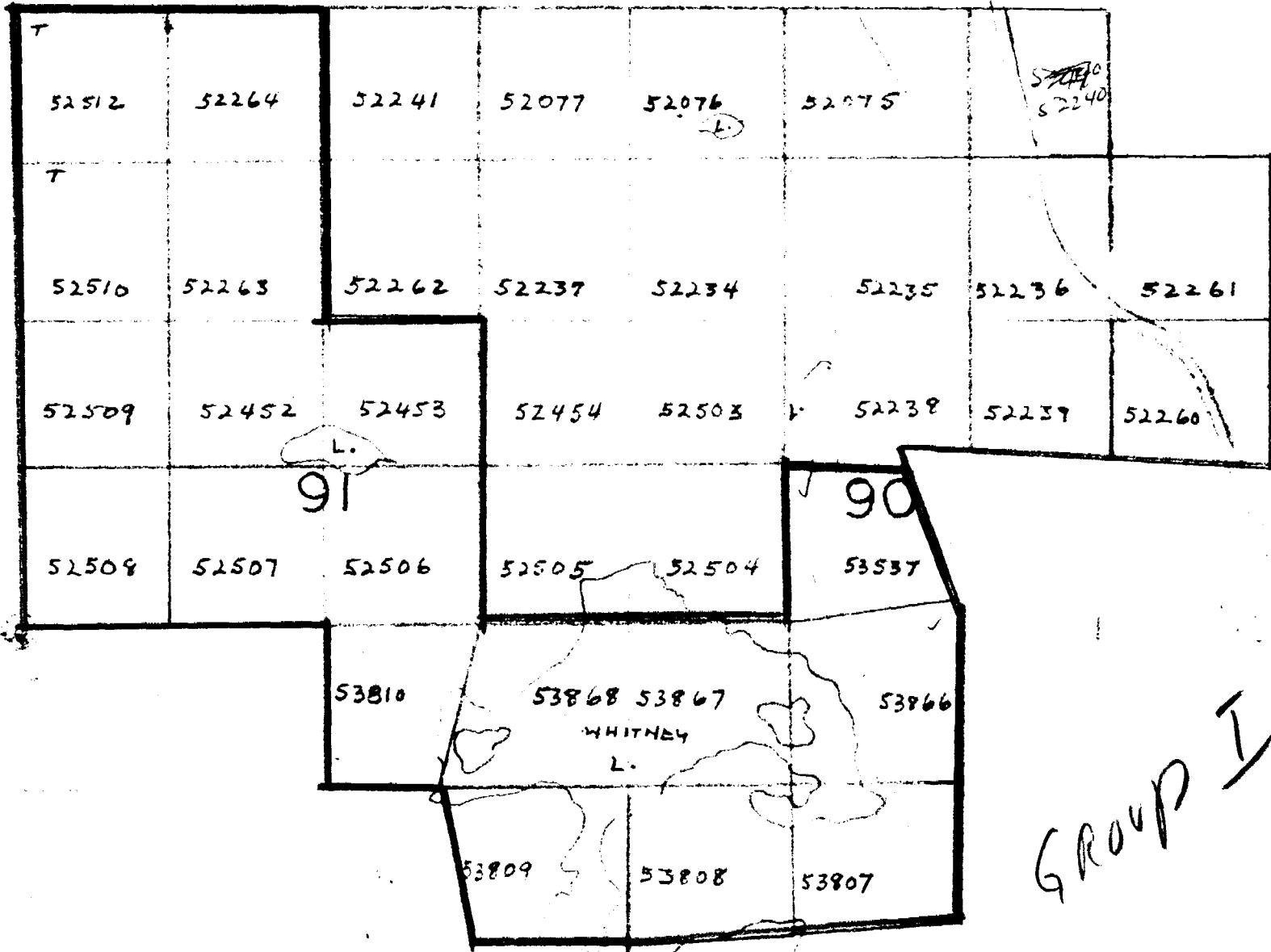
Township of GILLIES LIMITED (SOUTH PART)

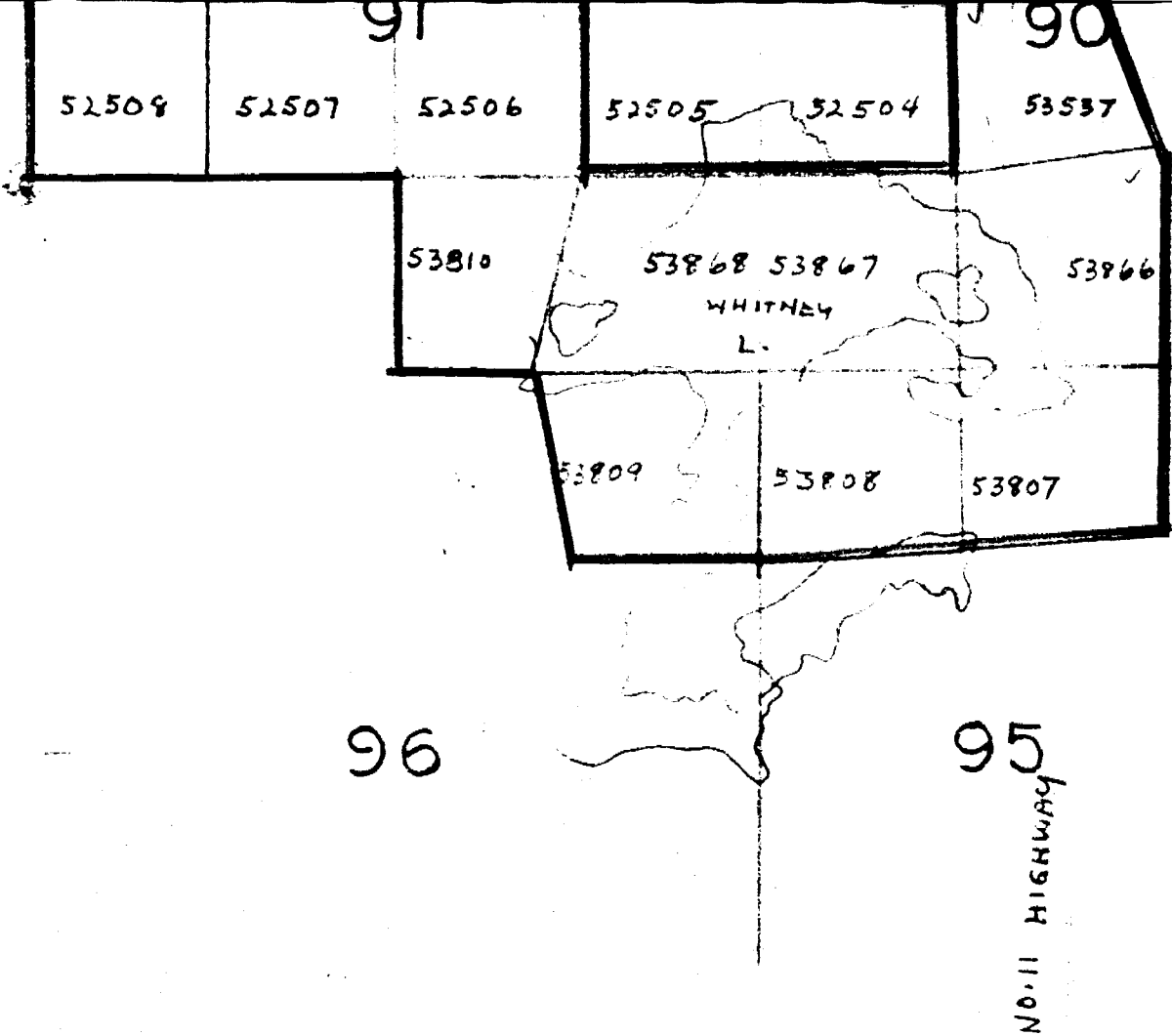
Report NO: 16 (Cont'd.)

Work performed by:

Claim NO	Hole NO	Footage	Date	Note
T 53537	1	297'	Feb/64	
	2	493'	June/65	
	3	556'	July/65	
	4	699'	July/65	
	5	550'	July/65	
	8	279'	Aug/65	
T 53866	9	265'	Aug/65	

Notes:





LOCATION MAP  
MID NORTH CLAIMS  
GILLIES LIMIT  
TEMISKAMING MINING DIVISION

SCALE 1" = 1/4 MILE

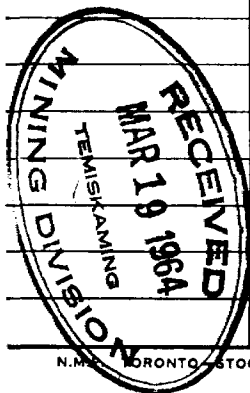


# DIAMOND DRILL RECORD

PROPERTY Nickel Rim Mines Ltd., Niemetz Option HOLE NO. 3

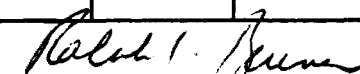
SHEET NUMBER \_\_\_\_\_ SECTION FROM \_\_\_\_\_ TO \_\_\_\_\_ STARTED Dec. 27, 1963  
 LATITUDE 1300 south DATUM \_\_\_\_\_ COMPLETED Dec. 30, 1963  
 DEPARTURE Profile 42 west BEARING 1830 ULTIMATE DEPTH 306-0'  
 ELEVATION \_\_\_\_\_ DIP 450 PROPOSED DEPTH \_\_\_\_\_

DEPTH FEET	FORMATION	SAMPLE NO.	WIDTH OF SAMPLE	GOLD S	<del>AG</del>	CU	NI
0.0 - 20.0	Casing						
306.0	Basic, Altered, Slight <sup>YK</sup> pyr., at 26.5 - Fract'd., Rusten <sup>ON</sup> Slips, well Chloritized up to 100.0'						
77.8 - 79.0	Fract'd., 1-2% pyr., slicks						
142.0 - 152.1	2% <sup>YK</sup> pyr., pyrr.						
152.1 - 155.8	Massive pyrr, sl.pyr & cpy	2759	3.7		0.4	0.380	0.45
155.8 - 161.3	1% pyr & pyrr	2760	5.5		0.7	0.04	TR
161.3 - 164.0	50% pyr, pyrr, cpy	2761	2.7		TR	0.08	0.51
175.0 - 203.5	2-3% pyr, pyrr						
203.5 - 205.1	Massive pyr, pyrr, cpy	2762	1.6	TR	2.8	0.32	1.18
214.0 - 276.0	Schisted						
214.0 - 220.0	very soft, talcy						
	2" mud at 217.3						
226.0 - 226.5	Carbonate Vein, cpy						
at 259.2	1/2" qtz, pyr.						
294.0 - 297.5	Feldspar porphyry						
	End of hole - 306.0						



N.M. TORONTO STOCK FORM NO. 501 REV. 12/51

DRILLED BY \_\_\_\_\_

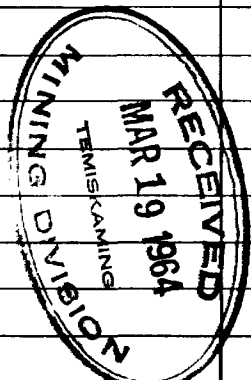
  
 SIGNED Ralph I. Benner

# DIAMOND DRILL RECORD

PROPERTY Nickel Rim Mines Ltd., Niemetz Option HOLE NO. 4

SHEET NUMBER 1 SECTION FROM \_\_\_\_\_ TO \_\_\_\_\_ STARTED Jan. 3, 1964  
 LATITUDE 100 West DATUM \_\_\_\_\_ COMPLETED Jan. 6, 1964  
 DEPARTURE Profile 40 west BEARING 186 ° ULTIMATE DEPTH 234'.0  
 ELEVATION \_\_\_\_\_ DIP 45° PROPOSED DEPTH \_\_\_\_\_

DEPTH FEET	FORMATION	SAMPLE NO.	WIDTH OF SAMPLE	GOLD \$	<del>AG</del>	CU	NI
0.0 - 18.0	Casing						
234.0	Diorite						
37.0 - 43.0	-Fract'd., acude to core pyr. on slips						
57.0 - 71.0	-Fract'd., pyr. in patches and on slips						
87.0 - 88.5	-Fract'd., pyr. on slips						
141.5 - 142.9	-3-4% pyr., pyrr., cpy.						
142.9 - 145.3	-Massive pyr., pyrr., cpy.	2763	2.4	0.01	4.2	0.10	0.48
145.3 - 150.8	-10% pyr., pyrr., cpy.	2764	5.5	0.01	TR	0.07	0.26
150.8 - 155.0	-2-3% pyr., and pyrr.						
200.0 - 234.0	-Talc schist						
	End of hole - 234.0						



DRILLED BY .....

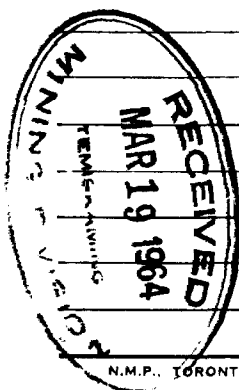
SIGNED Robert L. Hunter

# DIAMOND DRILL RECORD

PROPERTY Nickel Rim Mines Ltd., Niemetz Option HOLE NO. 5

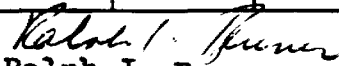
SHEET NUMBER 1 SECTION FROM \_\_\_\_\_ TO \_\_\_\_\_ STARTED Jan. 8, 1964  
 LATITUDE 970 south DATUM \_\_\_\_\_ COMPLETED Jan. 17, 1964  
 DEPARTURE Profile 42 west BEARING 185° ULTIMATE DEPTH 746.0  
 ELEVATION \_\_\_\_\_ DIP 60° PROPOSED DEPTH \_\_\_\_\_

DEPTH FEET	FORMATION	SAMPLE NO.	WIDTH OF SAMPLE	GOLD \$	<del>AG</del>	CU	NI
0.0 - 5.0	Casing						
746.0	Mainly diorite						
12.5 - 20.0	Altered, fine grained acid inclusions						
35.0 - 52.0	Porphyritic						
75.0 - 350.0	Well min. pyr.						
116 - 132.0	Banded appearance, siliceous						
140.8 - 141.6	Fract'd.						
148.0 - 149.0	Scattered epidote						
175.5 - 182.5	Banded appearance						
190.0 - 194.0	Well fract'd., hematite on slip						
199.0 - 210.0	Coarse grained consid., feldspar at 227.0 - 1" Mud						
236.5 - 239.0	Agglomerate (?)						
295.0 - 298.0	5 - 10% pyr.	2765	3.0	Nil	TR	--	0.15
335.0 - 350.0	Possible basic flow						
350.0 - 475.0	1 - 2% pyr.						
388.0 - 388.2	Granite dike						
475.0 - 481.7	2 - 3% pyr., pyrr., cpy.						



N.M.P. TORONTO—STOCK FORM NO. 501 REV. 12/51

DRILLED BY .....

  
 SIGNED Ralph I. Benner

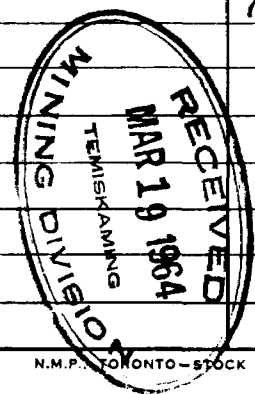


# DIAMOND DRILL RECORD

PROPERTY Nickel Rim Mines Ltd., Niemetz Option HOLE NO. 5

SHEET NUMBER 2 SECTION FROM \_\_\_\_\_ TO \_\_\_\_\_ STARTED \_\_\_\_\_  
 LATITUDE \_\_\_\_\_ DATUM \_\_\_\_\_ COMPLETED \_\_\_\_\_  
 DEPARTURE \_\_\_\_\_ BEARING \_\_\_\_\_ ULTIMATE DEPTH \_\_\_\_\_  
 ELEVATION \_\_\_\_\_ DIP \_\_\_\_\_ PROPOSED DEPTH \_\_\_\_\_

DEPTH FEET	FORMATION	SAMPLE NO.	WIDTH OF SAMPLE	GOLD \$	<del>COBALT</del> AG	CU	NI
481.7 - 486.0	15% pyr., pyrr., cpy., blue qtz.	2767	4.3	0.01	TR.	0.33	0.26
486.0 - 488.4	1-2% pyr., pyrr.	2768	2.4	0.01	---	---	0.10
488.4 - 493.4	20-25% pyr., pyrr., cpy.	2769	5.0	0.01	0.8	0.30	0.33
493.4 - 498.5	5% pyr., pyrr., cpy., blue qtz.	2770	5.0	0.01	---	0.21	0.10
498.5 - 501.8	15% pyr., pyrr., cpy.	2771	3.4	Nil	---	0.36	0.37
501.8 - 510	3 - 5% pyr.						
514.0 - 566.5	Talc schist, sl. pyr., cpy.						
524.0 - 525.0	Mud at 528.7 - $\frac{1}{4}$ " calcite at						
	at 544.3 - $\frac{1}{2}$ " carbonate, cpy.						
566.5 - 700.0	1 - 2% pyr.						
575 - 600	Silicaceous at 666.4 - veinlet pyrr., cpy.						
687.0 - 690.0	1 - 2% pyr., pyrr., cpy.						
700.0 - 730.0	Talc Schist 1 - 2% cpy., pyr.						
	End of hole - 746.0						



N.M.P. TORONTO-STOCK FORM NO. 501 REV. 12/51

DRILLED BY .....

SIGNED Ralph I. Jenner  
Ralph I. Jenner

# DIAMOND DRILL RECORD

PROPERTY Nickel Rim Mines Ltd. (Niemetz)

HOLE NO. 8

SHEET NUMBER 1

SECTION FROM \_\_\_\_\_ TO \_\_\_\_\_

STARTED Feb. 3, 1964

LATITUDE 1020 S

DATUM \_\_\_\_\_

COMPLETED Feb. 11, 1964

DEPARTURE Line 40 plus 40 W

BEARING 185°

ULTIMATE DEPTH 726.0'

ELEVATION \_\_\_\_\_

DIP 60°

PROPOSED DEPTH \_\_\_\_\_

DEPTH FEET	FORMATION	SAMPLE No.	WIDTH OF SAMPLE	GOLD %	SLUDGE GOLD %
0 - 5.0	Casing				
5.0 - 69.0	Diorite, Alternate Sections Altered at 19.0 - 3/4" Vuggy qtz. at 46.7 - 4" Fine light gray siliceous dike 48.7 - 50.8 " " " " "				
69.0 - 124.0	Diorite medium grained, altered 1% pyr. 118.0 - 120.0 - Fract'd. slicks				
124.0 - 174.0	Diorite - Fine grained altered 1-3% pyr. 157.7 - 158.5 - Granite dike				
174.0 - 463.0	Diorite, alternate fine & medium grained 1-3% pyr. at 207.5 - 1/8" vuggy qtz. acute to core at 211.5 - 3/8" qtz., cube pyr., cpy. at 352.0 - 353.5, fract., slicks, acute to core 371.2 - 372.4 - fract'd., slicks 387.0 - 430.0 - numerous calcite stringers 430.0 - 432.0 - fract., acute to core, rust on slip				
8	462.4 - 463.0 - 5% pyrr.				
463.0 - 692.0	Highly altered, talc zone 1-2% pyr., at 528.0 - 3" pink calcite 532.6 - 533.0 - Mud 547.0 - 552.0 - Numerous irreg., calcite str.				



# DIAMOND DRILL RECORD

PROPERTY Nickel Rim Mines Ltd., (Niemetz)

HOLE NO. 9

SHEET NUMBER 1

SECTION FROM \_\_\_\_\_ TO \_\_\_\_\_

STARTED Feb. 13, 1964

LATITUDE 900 S

DATUM \_\_\_\_\_

COMPLETED Feb. 24, 1964

DEPARTURE line 46 W

BEARING 185 °

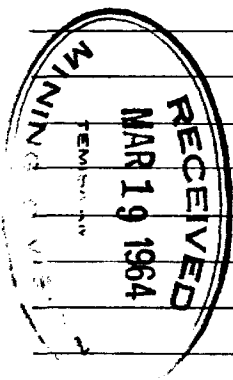
ULTIMATE DEPTH 545.0'

ELEVATION \_\_\_\_\_

DIP 60°

PROPOSED DEPTH \_\_\_\_\_

DEPTH FEET	FORMATION	SAMPLE NO.	WIDTH OF SAMPLE	GOLD %	SLUDGE GOLD
0 - 6.0	Casing				
6.0 - 543.0	Diorite, well altered mainly, some short unaltered sections				
	21.0 - 24.5 - Fine basic dike				
	126.0 - 150.0 - 1 - 2% pyr. in blebs & streaks				
	218.0 - 223.0 - Well developed feldspar crystals				
	234.0 - 235.0 - " " " "				
	245.2 - 246.5 - Fine Basic Dike				
	275.0 - 280.5 - " " "				
	275.0 - 276.5 - Well developed feldspar crystals				
	283.0 pyr. increasing				
	325.0 - 350.0 - Well fract'd., some talcy sections				
	325.0-325.5 - Mud				
	347.5 - 349.2 - qtz., green carb., pyr.				
	349.2 - 355.0 - Fine grained black dike irregularly fract'd. pyr. on fract's.				
	430.5 - 431.0 - Fract'd., talcy at 443.0 - fract'd., acute to core, talcy				
	444.5 - 445.5 - 50% pyr., sl. pyrr.				
	463.0 - 463.5 - Fract'd. talcy				
	474.7 - 476.7 - Well fract'd., slicks, pyr.				



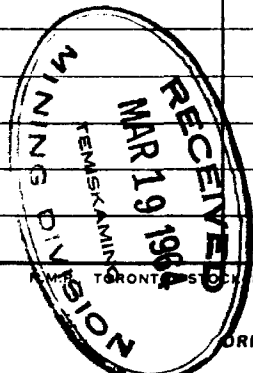


# DIAMOND DRILL RECORD

PROPERTY Nickel Rim Mines Ltd., Niemetz Option HOLE NO. 2

SHEET NUMBER 1 SECTION FROM \_\_\_\_\_ TO \_\_\_\_\_ STARTED December 13, 1963  
 LATITUDE 1510 south DATUM \_\_\_\_\_ COMPLETED December 21, 1963  
 DEPARTURE Profile 44 West BEARING 0040 ULTIMATE DEPTH 409'.0  
 ELEVATION \_\_\_\_\_ DIP 45° PROPOSED DEPTH \_\_\_\_\_

DEPTH FEET	FORMATION	SAMPLE NO.	WIDTH OF SAMPLE	GOLD %	<del>AG</del>	CU	NI
0.0 - 30.0	Casing						
409.0	Altered Basic Rock, Generally						
	Slight pyr. min.						
30.0 - 75.0	Well sheared, broken up, soft talcy, qtz. str. pyr. min						
75.0 - 192.0	Sheared but not as intense as previous, talcy						
115.0 - 115.5	Mud						
125	- Pyr. increasing						
135.4 - 137.2	Fine dark, siliceous, cube pyr. calc. str.						
145.0 - 146.8	" " " " " "						
156.0 - 166.0	Basic Dike, comparatively fresh, calc. str.						
173.0 - 192.5	Well sheared talcy, pyr. in seams						
192.0 - 209.0	Fine Basic dike						
209.0 - 236.0	Sheared, pyr. 2-3%, sl. pyr.						
236.0 - 275.0	Massive (not sheared) 2-3% pyr.						



TORONTO, ONT. FORM NO. 501 REV. 12/51

DRILLED BY \_\_\_\_\_

SIGNED \_\_\_\_\_

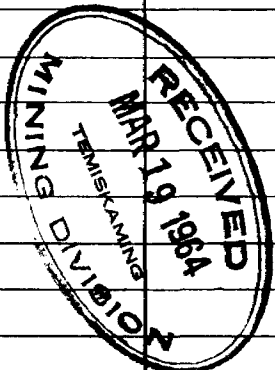
*Ralph I. Jensen*

# DIAMOND DRILL RECORD

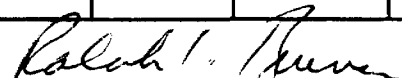
PROPERTY Nickel Rim Mines Ltd., Niamez Option HOLE NO. 2

SHEET NUMBER 2 SECTION FROM \_\_\_\_\_ TO \_\_\_\_\_ STARTED \_\_\_\_\_  
 LATITUDE \_\_\_\_\_ DATUM \_\_\_\_\_ COMPLETED \_\_\_\_\_  
 DEPARTURE \_\_\_\_\_ BEARING \_\_\_\_\_ ULTIMATE DEPTH \_\_\_\_\_  
 ELEVATION \_\_\_\_\_ DIP \_\_\_\_\_ PROPOSED DEPTH \_\_\_\_\_

DEPTH FEET	FORMATION	SAMPLE NO.	WIDTH OF SAMPLE	GOLD \$	<del>AG</del> AG	CU	NI
247 -252	1-3% pyr. sl. cpy.	2751	5.0	TR	N11	--	0.15
252.0-253.5	5% pyr.	2752	1.5	TR	N11	0.07	0.35
253.5-258.5	2-3% pyr., pyrr.	2753	5.0	TR	0.22	--	0.15
275.0-290.0	Fine grained, 1-2% pyr. dissem & in seams						
291.0-296.0	10-15% pyr. & pyrr with some massive sections, sl.cpy.	2754	5.0	N11	TR	0.07	0.40
296.0-301.5	2-3% pyr. & pyrr.	2755	5.5	TR	0.01	0.12	0.20
301.5-310.0	5% pyr. pyrr. sl. cpy.	2756	8.5	TR	5.3		
310.0-315.0	10-15% pyr. pyrr. sl. cpy.	2757	5.0	TR	TR	0.14	0.40
315.0-325.0	2-3% " "						
325.0-409	Fine Basic, 1% pyr.						
End of hole 409.0							



DRILLED BY .....

  
 SIGNED Ralph L. Penner

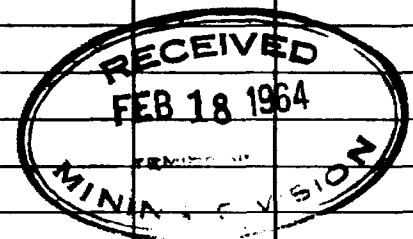
# DIAMOND DRILL RECORD

5-2 45-3  
Block 91  
Profile 58  
PROPERTY

PROPERTY Nickel Rim Mines Ltd., Niemetz Option HOLE NO. 6

SHEET NUMBER 1 SECTION FROM \_\_\_\_\_ TO \_\_\_\_\_ STARTED Jan. 22, 1964  
 LATITUDE 15° West of 760 South DATUM \_\_\_\_\_ COMPLETED Jan. 25, 1964  
 DEPARTURE Profile 58 west BEARING 188° ULTIMATE DEPTH 360°.0  
 ELEVATION \_\_\_\_\_ DIP 55° PROPOSED DEPTH \_\_\_\_\_

DEPTH FEET	FORMATION	SAMPLE NO.	WIDTH OF SAMPLE	GOLD %	<del>AGGREGATE</del>	CU	NI
0.0	14.0 Casing						
	217.0 Diorite, Feldspar Rich, Some Siliceous sections						
	Increase in chlorite from 115.0'.						
	164.0 - 164.5 - 5% qtz., chl., sl. pyr.						
	165.0 - Increase in pyrite						
	185.0 - 186.0 - Fract'd. slicks						
	346.0 Fine grained lava? pyr. 1 - 2%						
	217.0 - 225.0 - Numerous calc. str.						
	290.0 - 296.3 - Massive pyrr., pyr., cpy.,						
	Blue qtz.	2773	6.3	N11	TR	0.11	N11
	308.9 - 309.4 - Qtz., and calc. vein						
	326.4 - 333.0 - 15% pyr., pyrr., cpy.	2774	6.6	N11	TR	0.05	0.06
	blue qtz., (mostly pyr.)						
	335.0 - 339.0 - 15 - 20% pyr., pyrr., cpy.	2775	4.0	N11	TR	0.05	0.06
	blue qtz., (mostly pyr.)						
	339.0 - 343.8 - 5% - pyr., pyrr., cpy.	2776	4.8	N11	TR	0.04	N11
	360.0 Diorite						
	End of hole - 360.0						



SIGNED Ralph I. Benner  
 Ralph I. Benner

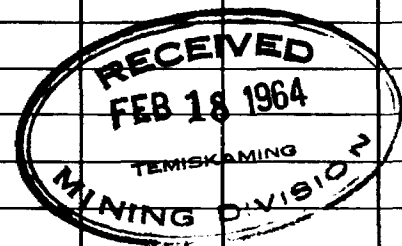


# DIAMOND DRILL RECORD

PROPERTY Nickel Rim Mines Ltd., Niemetz Option HOLE NO. 7

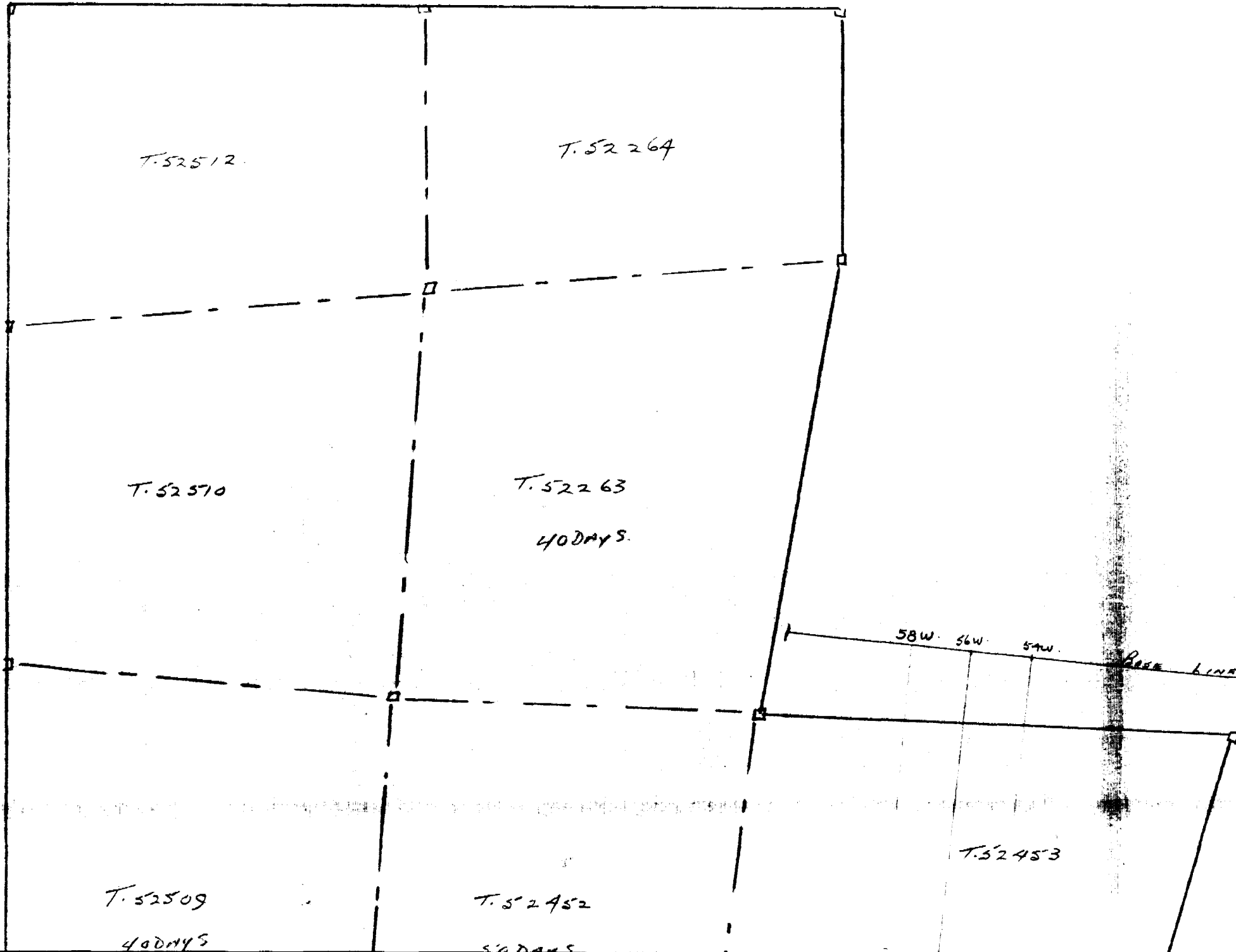
SHEET NUMBER 1 SECTION FROM \_\_\_\_\_ TO \_\_\_\_\_ STARTED Jan. 26, 1964  
 LATITUDE \_\_\_\_\_ DATUM \_\_\_\_\_ COMPLETED Jan. 30, 1964  
 DEPARTURE \_\_\_\_\_ BEARING 188° ULTIMATE DEPTH 480.0  
 ELEVATION \_\_\_\_\_ DIP 75° PROPOSED DEPTH \_\_\_\_\_

DEPTH FEET	FORMATION	SAMPLE NO.	WIDTH OF SAMPLE	GOLD \$	<del>DIAMOND</del> CU	NI
0.0 - 5.0	Casing					
480.0	Basic rock, noticeable feldspar to 122.5, thereafter only dark minerals.					
215.0 - 277.6	Fine grained					
420 - 475	Siliceous (harder)					
5.0 - 15.0	Fract'd. FeO on slips Several Qtz. veinlets					
38.0 - 47.0	Fine grained gray dike rock, Sharp contacts					
79.0 - 81.0	" " " "					
125.0 - 132.5	Fine grained gray dike					
129.6 - 130.5	Aplitic., sl. pyr. at 131.5 - Fract'd. acute to core slicks, 1/4" calcite. at 193.8- $\frac{1}{2}$ " granite					
295.2 - 296.8	Mass. pyrr. (non mag.)	2777		Nil	0.4	0.15 0.13
311.4 - 313.6	40-50% pyrr. (Mag.) pyr.	2778		Nil	0.4	0.13 0.13
350.2 - 352.5	Mass. pyrr. (Mag.) pyr. Blue Qtz.	2779		Nil	0.2	0.05 0.05
378.0 - 402.5	pyr., pyrr., cpy., blue Qtz.					
384.0 - 389.0	25% sulphides	2780		Nil	0.4	0.13 0.11
389.0 - 384.5	" "	2781		Nil	0.4	0.03 0.14



~~XXXXXXXX~~ End of hole 480.0

SIGNED *Ralph I. Benner*  
 Ralph I. Benner



T. 52512

T. 52264

T. 52570

T. 52263

40 DAYS

T. 52509

40 DAYS

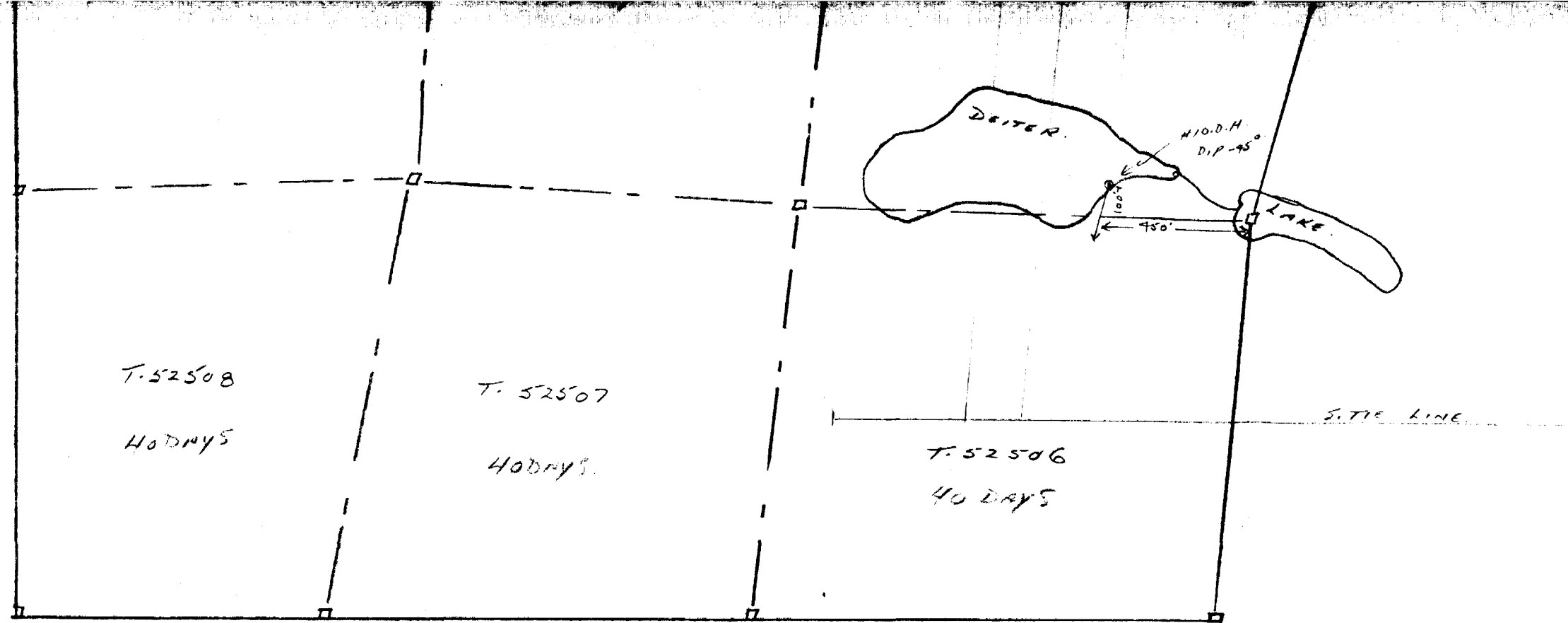
T. 52452

50 DAYS

T. 52453

58W. 56W. 54W.

RAIL LINE



MID-NORTH ENGINEERING SERVICES LTD.

ASSESSMENT DIAMOND DRILL HOLE

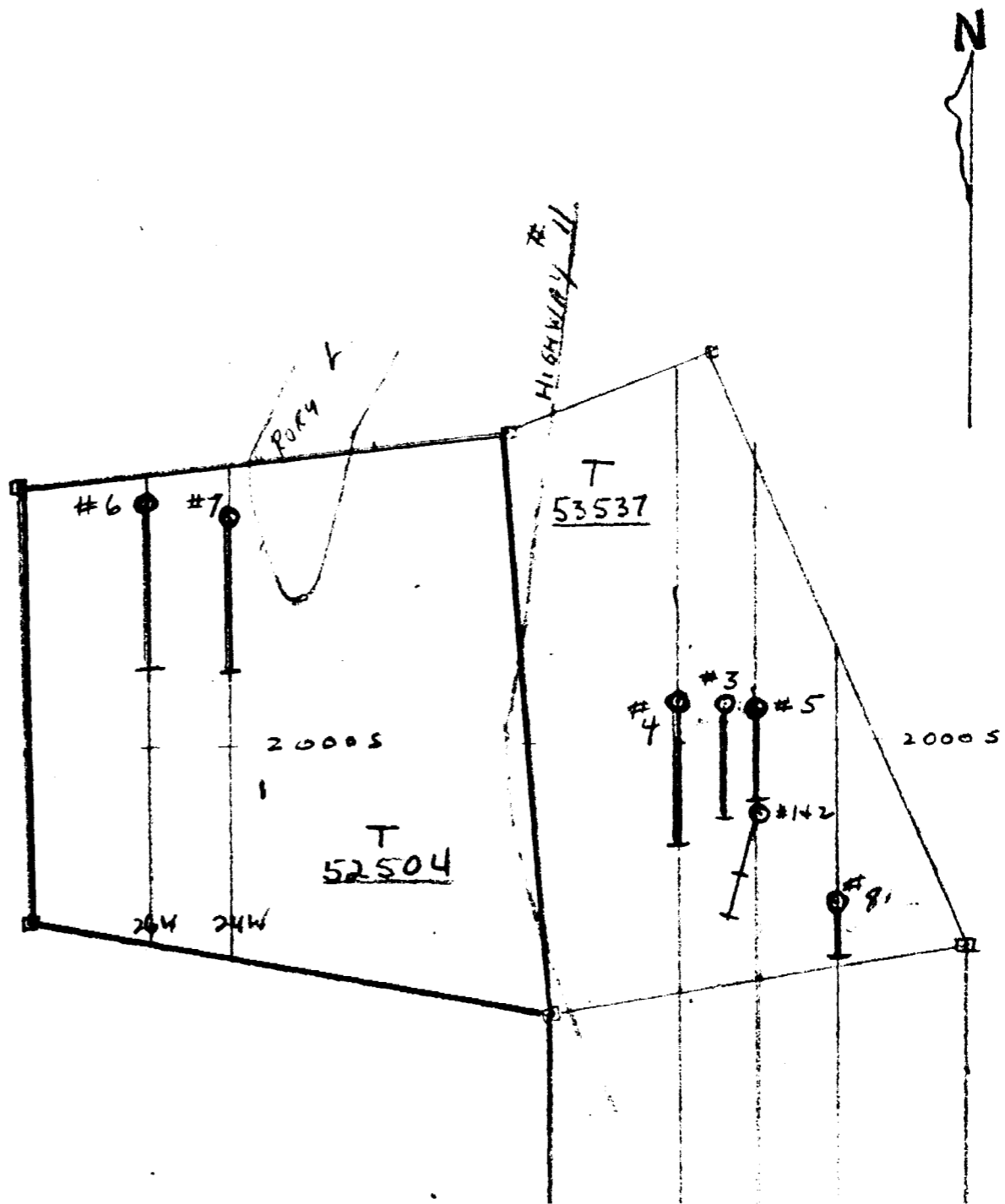
GILLIES LIMIT

SCALE 1 INCH = 400 FEET

M.A. 2/69

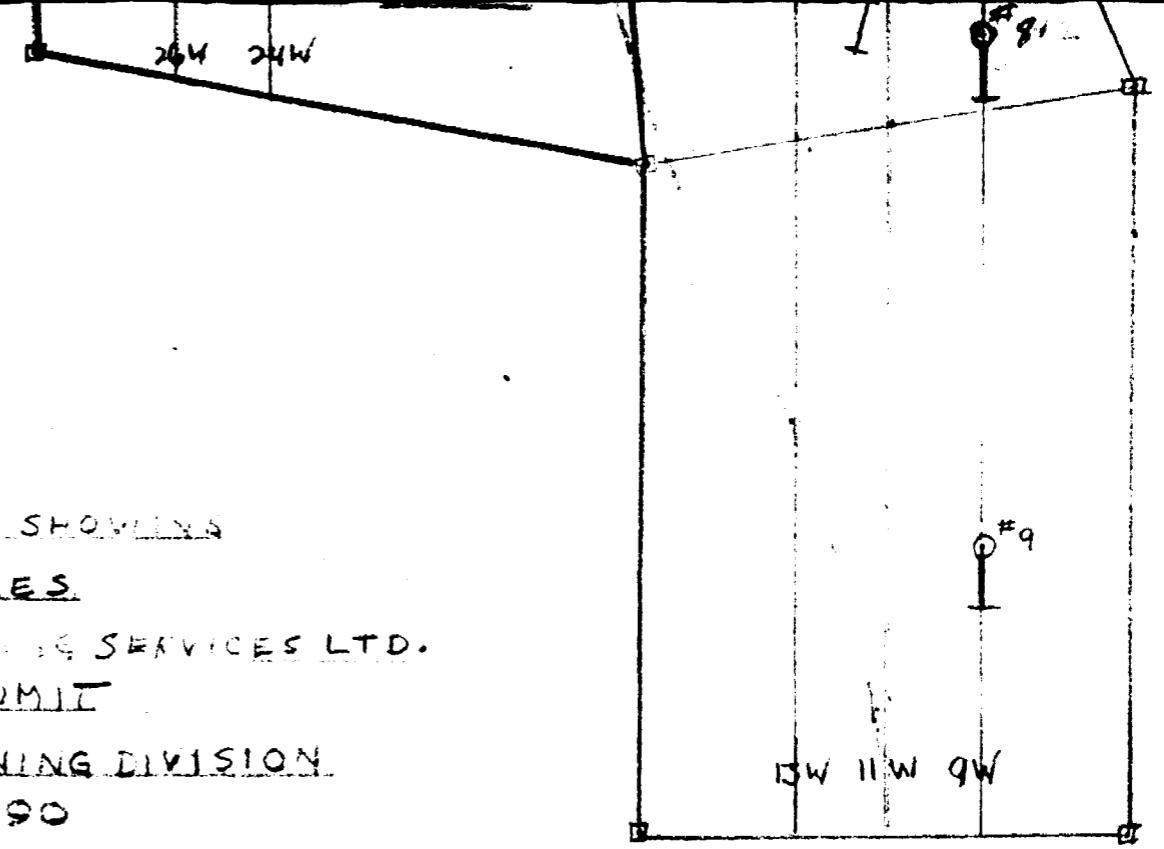


GROUP II



LOCATION MAP SHOWING  
DRILL HOLES  
MIDNORTH ENGINEERING SERVICES LTD.  
GILLIES LMIT  
TEMISKAMING MINING DIVISION  
BLOCK 90

SCALE: 1" = 400 FEET



SEP 23 1965

# DIAMOND DRILL RECORD

PROPERTY Nickel Rim Mines Limited  
(Gillies Limit - Niemetz Group)

HOLE NO. 6

SHEET NUMBER 1 SECTION FROM \_\_\_\_\_ TO \_\_\_\_\_  
 LATITUDE 1440 S DATUM \_\_\_\_\_  
 DEPARTURE 2400 W BEARING South  
 ELEVATION \_\_\_\_\_ DIP 60°

STARTED July 27, 1965  
 COMPLETED Aug. 10, 1965  
 ULTIMATE DEPTH 800.0  
 PROPOSED DEPTH \_\_\_\_\_

DEPTH FEET	FORMATION	SAMPLE NO.	WIDTH OF SAMPLE	GOLD g	SLUDGE GOLD g
0 - 13.6	Casing				
13.6 - 100.0	Mixture altered diorite & lava 1% pyr.				
	61.0 - 62.0 - Fract'd., broken slicks				
	67.0 - 68.0 - Carbonate str.				
	71.0 - 71.6 - Fract'd.				
	96.0 - 97.0 - "				
100.0 - 204.0	Light gray green basic rock, 1% pyrr.				
	143.2 - 144.6 - Fract'd.				
	146.6 - 148.8 - Fine basic dike				
	156.0 - 166.0 - weak shearing				
204.0 - 510.0	Altered diorite, 1% pyrr.				
	418.6 - 510.0 - Sheared, 2% pyrr., pyr.				
	428.0 - 435.0 - Serpentinized, 1% pyrr.				
	445.0 - 469.0 - Sheared, 2% pyr., pyrr.				
510.0 - 581.5	Rhyolite, 1% pyrr.				
581.5 - 686.5	Diorite breccia, siliceous, 1% pyr., pyrr.				
	639.0 - 647.0 - Fine basic dike				
	679.0 - 674.0 - Sample	NR6-1			
686.5 - 696.0	Rhyolite porphyry				
696.0 - 712.5	Basic, dike, scattered pyr. & pyrr.				

N.M.P., TORONTO-STOCK FORM NO. 501 REV. 12/51

DRILLED BY \_\_\_\_\_

SIGNED Calvin A. Ruse

JAN 11 7 52 573





# DIAMOND DRILL RECORD

PROPERTY Nickel Rim Mines Limited  
(Gillies Limit - Niemetz Group)

HOLE NO. 7

SHEET NUMBER 1

SECTION FROM \_\_\_\_\_ TO \_\_\_\_\_

STARTED Aug. 12, 1965

LATITUDE 1470 S

DATUM \_\_\_\_\_

COMPLETED Aug. 20, 1965

DEPARTURE 2400 #

BEARING South

ULTIMATE DEPTH 750.0

ELEVATION \_\_\_\_\_

DIP 60°

PROPOSED DEPTH \_\_\_\_\_

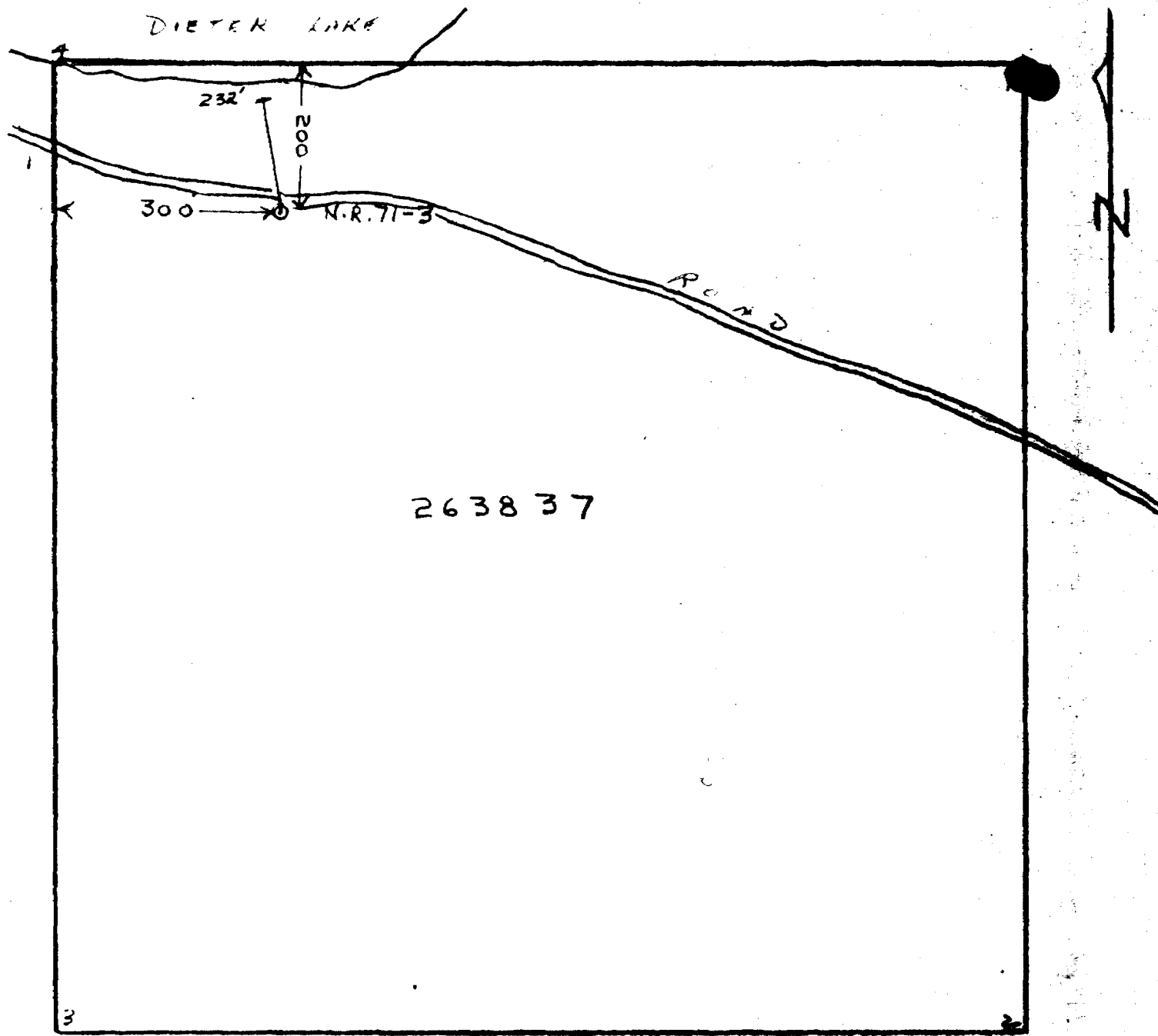
DEPTH FEET	FORMATION	SAMPLE NO.	WIDTH OF SAMPLE	GOLD \$	SLUDGE GOLD \$
0 - 8.0	Casing				
8.0 - 573.5	Diorite				
	26.5 - 30.5 - Fract'd.				
	38.0 - 39.5 - "				
	46.5 - 49.5 - "				
	51.0 - 53.0 - "				
	56.0 - 61.4 - fine basic dike				
	60.0 - 62.5 - Fract'd., splashes calc.				
	102.0 - 153.0 - Altered				
	at 114.6 - 1" calc.				
	129.5 - 132.0 - Fract'd., slicks				
	138.5 - 139.5 - "				
	at 155.0 - splash of cpy.				
	171.0 - 173.6 - Sheared				
	173.6 - 219.0 - light coloured, bleached				
	at 293.0 - 3" qtz.				
	424.5 - 426.0 - Fract'd.				
	431.0 - 433.0 - " muddy slips				
	480.5 - 482.0 - " slicks				
	448.9 - 451.0 - Fract'd.				
573.5 - 584.0	Amphibole porphyry, 1% pyr., pyrr.				

N.M.P., TORONTO—STOCK FORM NO. 501 REV. 12/51

DRILLED BY \_\_\_\_\_

SIGNED Col. I. B. B. B.





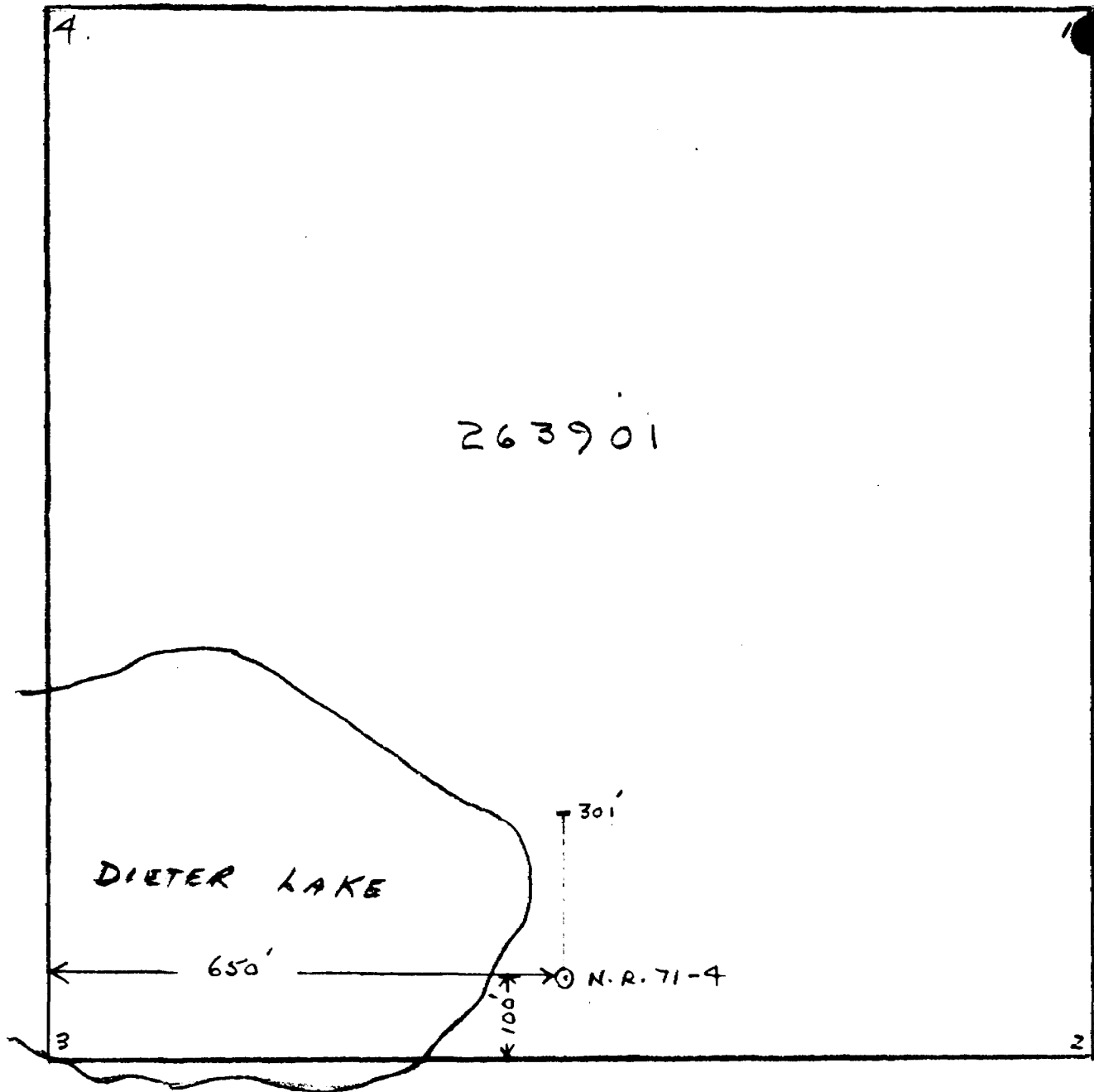
ASSESSMENT WORK  
MID-NORTH ENGINEERING SERVICES LTD.

D. D. H. N.R. 71-3

BLOCK 91 - GILLIES LIMIT

SCALE 1" = 200'





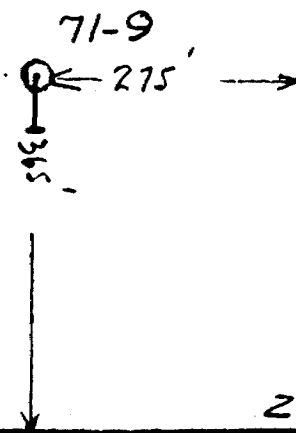
ASSESSMENT WORK  
MID-NORTH ENGINEERING SERVICES LTD  
D.D.H. N.R. 71-4  
BLOCK 91 - GILLIES LIMIT.  
SCALE 1" = 200'



BLOCK 91

263901

DIETER LAKE



ASSISTMENT WORK

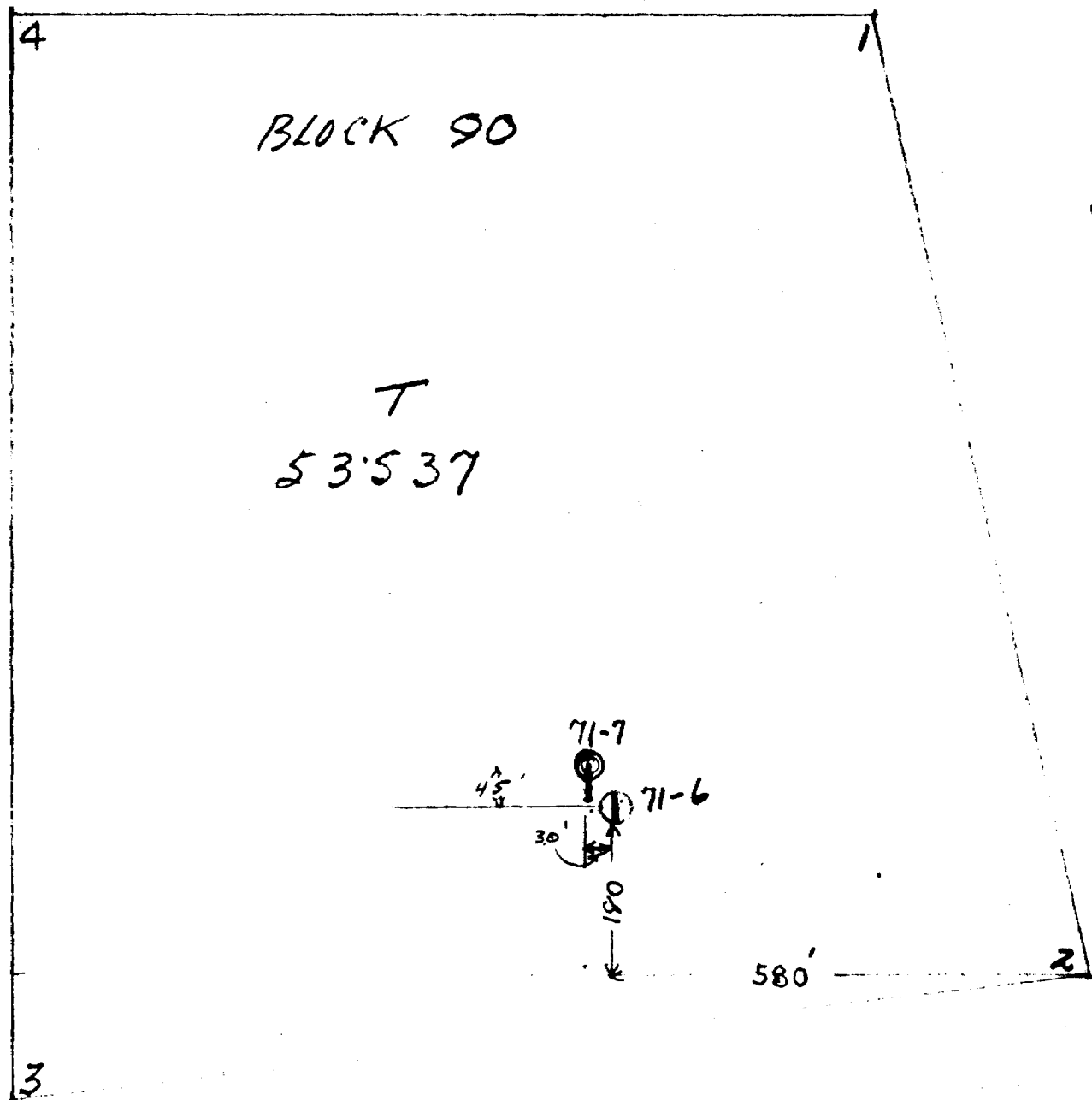
MIDNORTH ENGINEERING SERVICES LTD.

D.D.H. N.R. 71-9 - DIP 50°  
DEPTH 133.0

SCALE 1" = 132.0







ASSESSMENT WORK

MID-NORTH ENGINEERING SERVICES LTD.

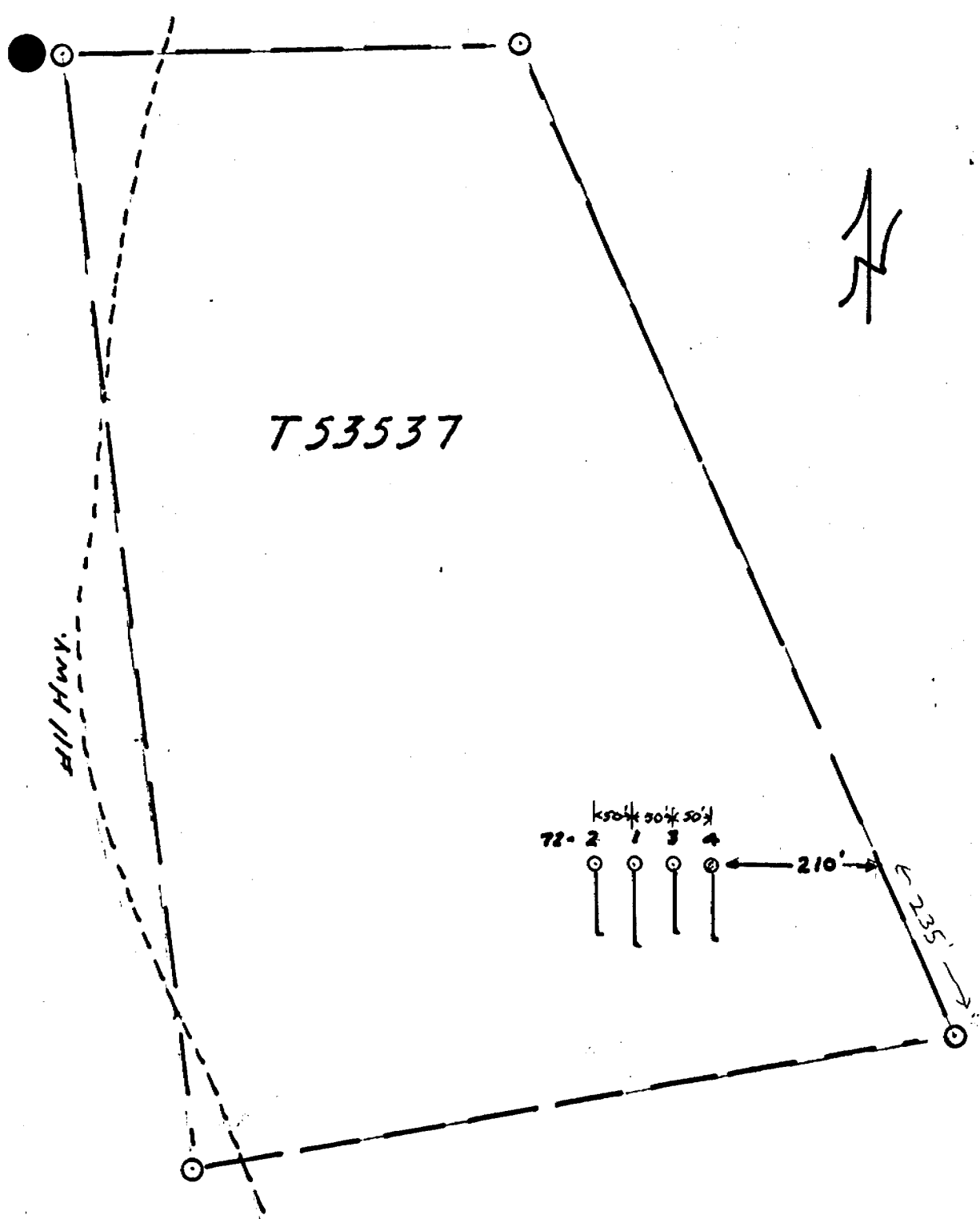
165.0' - D.D.H NR-71-6 - DIP - VERTICAL

103.0' D.D.H NR-71-7 - DIP - 45°

SCALE 1" = 200'







DIAMOND DRILL HOLE LOCATIONS  
 NICKEL RIM MINES LIMITED  
 WHITNEY LAKE PROPERTY  
 GILLIES LIMIT  
 L.L. MINING DIVISION

scale: 1" = 200'

Nov. 18/72

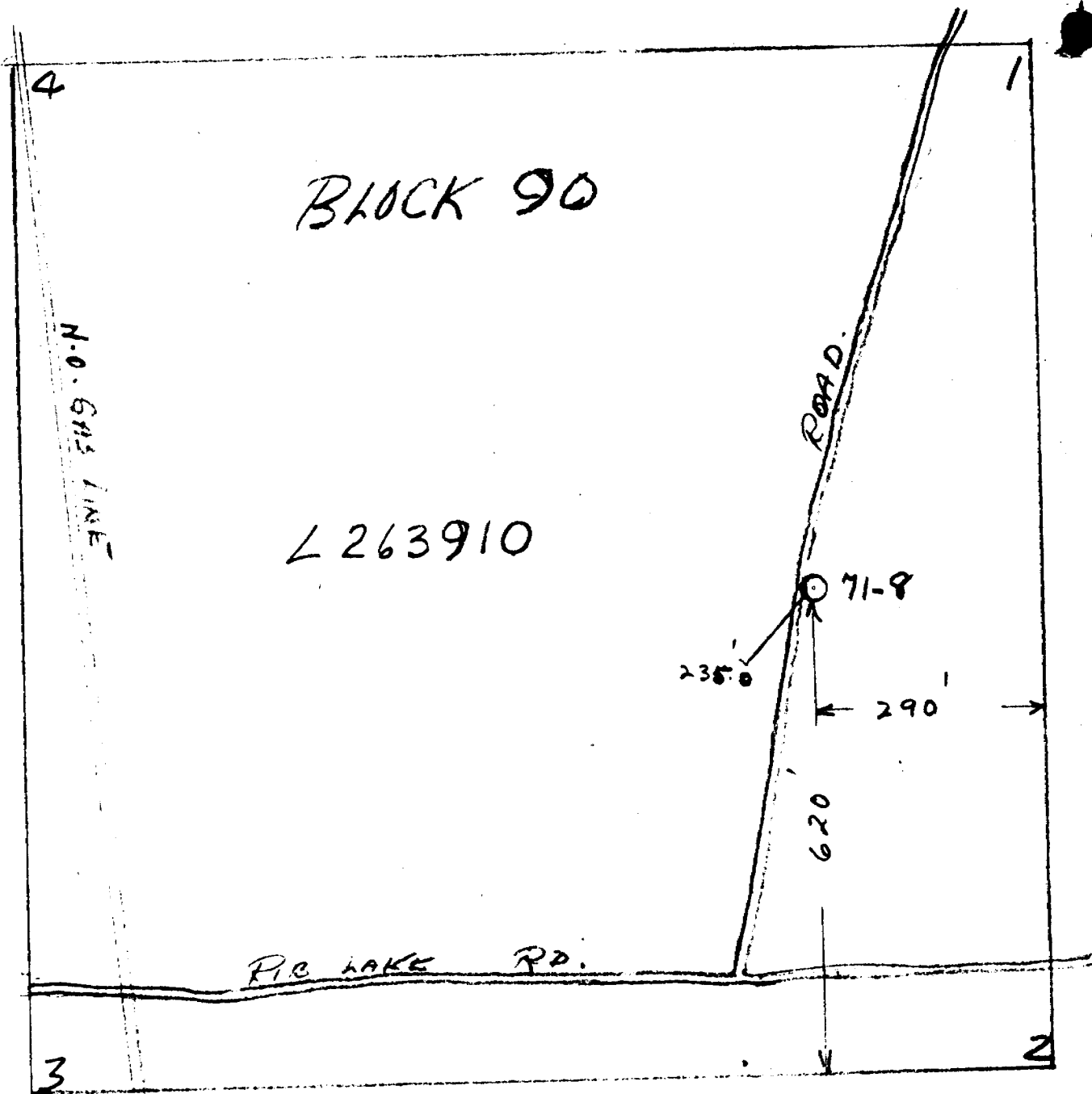












ASSESSMENT WORK.

MID NORTH ENGINEERING SERVICES LTD.

D.D.H. NR-71-8 - DIP 45°

SCALE 1" = 1320'

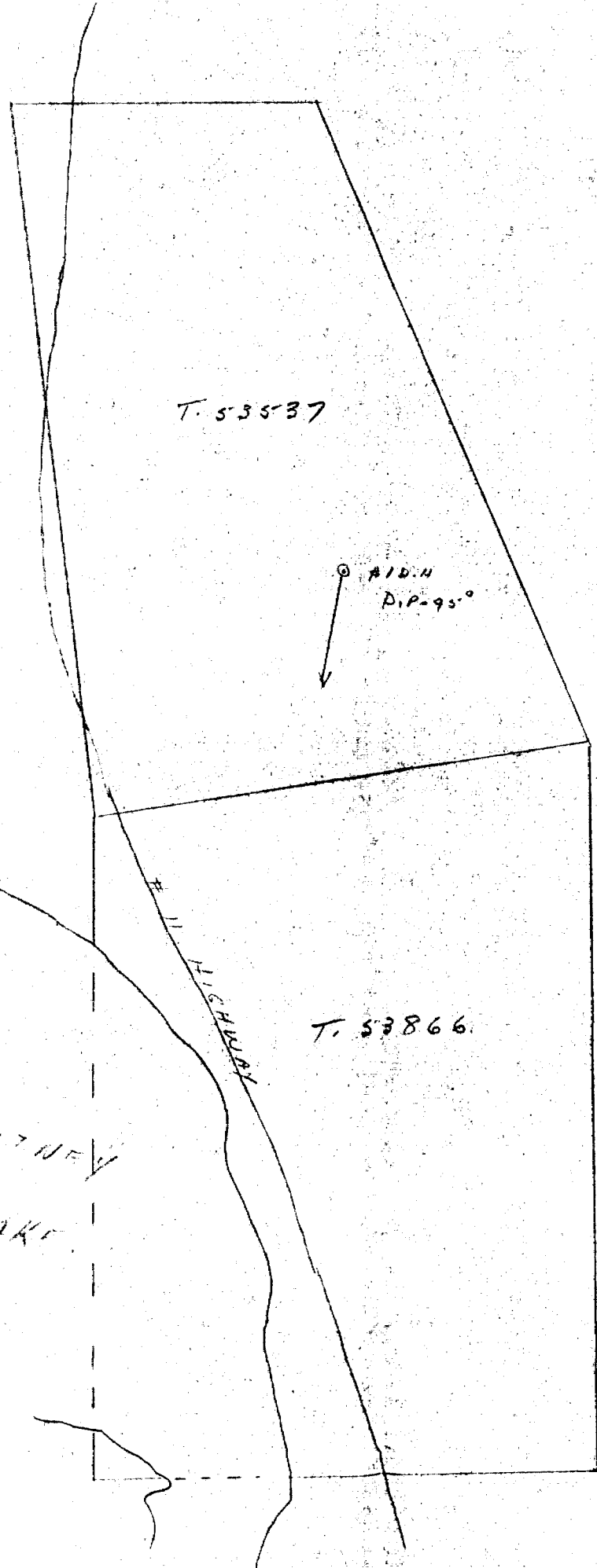


2

RECEIVED  
MAY 16 1944  
MINING DIVISION

RECEIVED  
MAY 16 1944  
MINING DIVISION

RECEIVED  
MAY 16 1944  
MINING DIVISION



T. 53537

A.D.H.  
D.P. = 95°

T. 53866

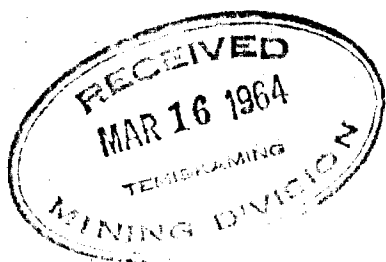
HILL HIGHWAY

WHITNEY  
LAKE

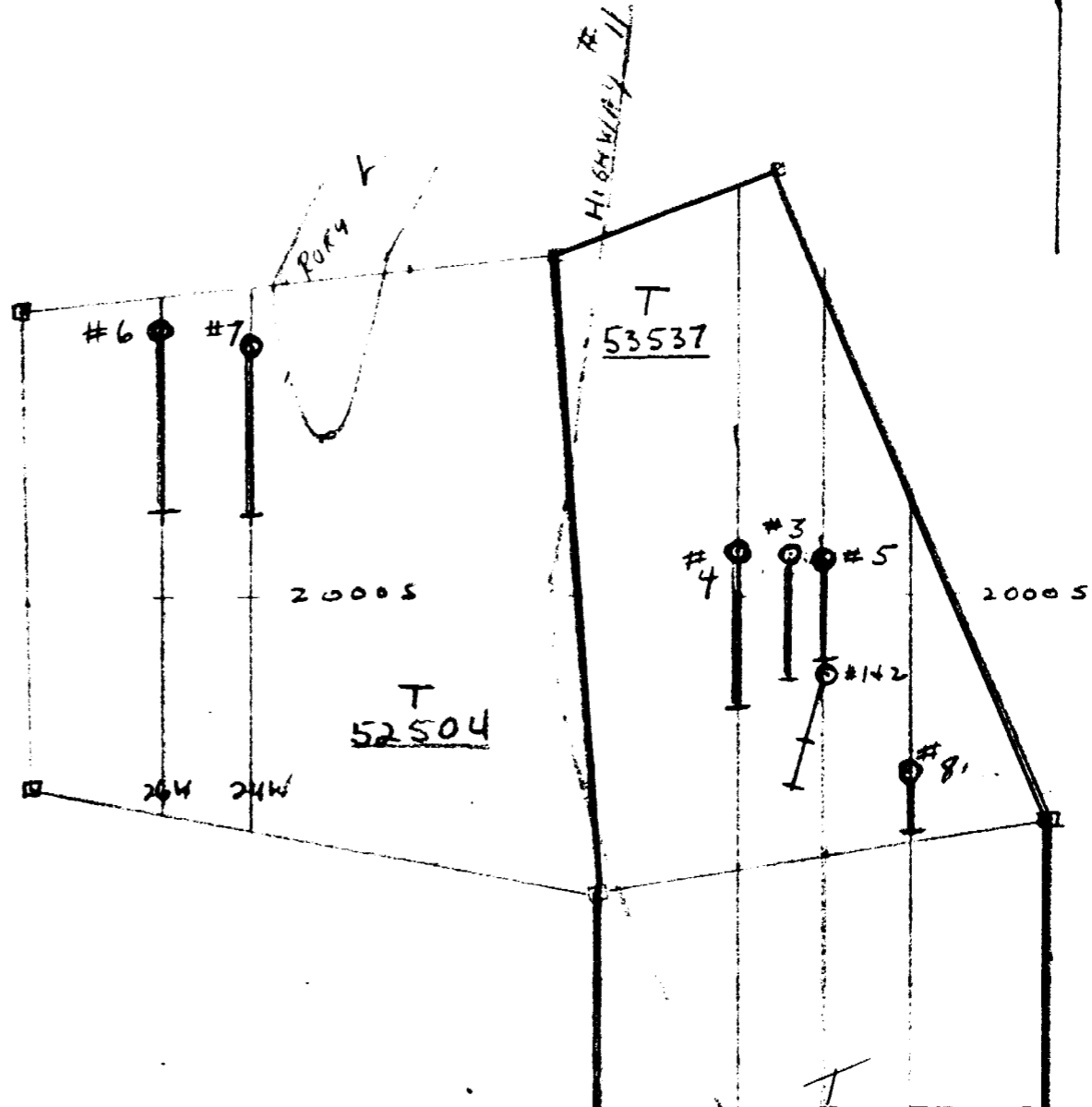
SKETCH  
SHOWING  
CHRON  
GROUP

MID-NORTH  
ENGINEERING  
SERVICES LTD

SCALE 1" = 500'

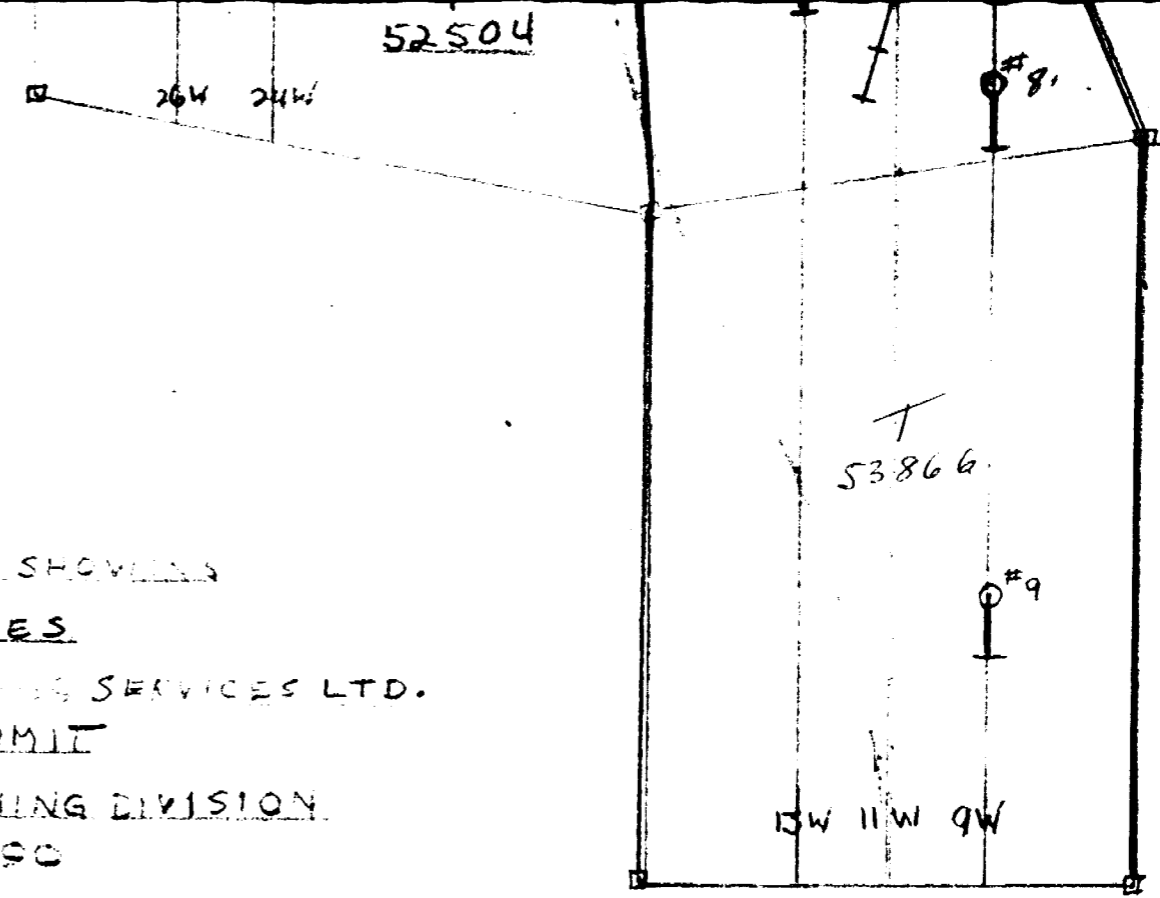


Group I



LOCATION MAP SHOWING  
DRILL HOLES  
MIDNORTH ENGINEERING SERVICES LTD.  
GILLIES UNIT  
TEMISKAMING MINING DIVISION  
BLOCK 90

SCALE: 1" = 400 FEET



SEP 23, 65

# DIAMOND DRILL RECORD

PROPERTY Nickel Rim Mines Limited HOLE NO. 5  
 (Rib Lake)

SHEET NUMBER \_\_\_\_\_ SECTION FROM \_\_\_\_\_ TO \_\_\_\_\_ STARTED July 19, 1965  
 LATITUDE 1920 S DATUM \_\_\_\_\_ COMPLETED July 23, 1965  
 DEPARTURE 1100 W BEARING South ULTIMATE DEPTH 550.  
 ELEVATION \_\_\_\_\_ DIP 60° PROPOSED DEPTH \_\_\_\_\_

DEPTH FEET	FORMATION	SAMPLE NO.	WIDTH OF SAMPLE	PERCENT	SLUDGE PERCENT	CU	NI
0 - 7.0	Casing						
7.0 - 499.0	Diorite, scattered pyr.						
	39.0 - 43.0 - Fract'd. broken						
	42.6 - 47.0 - Granite Dike						
	47.0 - 48.0 - Fract'd. broken						
	200.0 - 205.0 - Fine basic dike						
	263.0 - 408.0 - 2% pyrr., cpy.						
	355.5 - 357.0 - Whole core	NR5-2	1 - 5	Nil	2.2	0.10	0.18
	365.5 - 370.0 - 2-3% pyrr., cpy.	NR5-3	4 - 5			0.06	Nil
	388.5 - 383.7 - 1-2% " "	NR5-4	5 - 2			0.14	0.21
	408.0 - 423.0 - Talcy, serpentized	NR5-1	2 - 8	Nil	TR	0.88	0.74
	465.2 - 468.0 - 5-10% pyrr., cpy.						
499.0 - 525.	Alternate porphyry & Diorite						
525.0 - 550.0	Rhyolite porphyry						
550.0	End of Hole						
	Dip Tests:						
	at 250.0 - 55° true						
	" 550.0 - 55° "						







# DIAMOND DRILL RECORD

PROPERTY Rib Lake-Mid-North Engineering Services Ltd. HOLE No. MN 1  
 LATITUDE 2170 S STARTED Feb. 26, 1964 COMPLETED March 1, 1964  
 DEPARTURE 11 W BEARING 202° ULTIMATE DEPTH 297.0  
 ELEVATION \_\_\_\_\_ DIP 45° PROPOSED DEPTH \_\_\_\_\_

DEPTH FEET		FORMATION	Sample No.	AG	SCORING % AU	% MK OU	% MK NI
General	Economic						
0-10.0		Casing					
0-208.0		Altered Diorite 1% pyr., cpy.					
	at 62.4	4" Breccia, calcite matrix					
	67.0- 71.0	Fine basic dike					
	90.0- 95.0	Talcy					
	95.0-101.3	Fine basic dike					
	112.8-120.0	Sheared, talcose					
	120.0-155.8	Fine grained, basic					
	121.0-125.0	1-2% cpy., & pyrr., in streaks & blebs					
	140.0-142.0	2% cpy., pyrr.					
	142.0-145.0	2-3% cpy., pyrr.	2786	0.6	TR	0.2	0.18
	145.0-150.0	50-75% cpy., pyrr., pyr., blue qtz.	2787	0.4	TR	0.13	0.83
	150.0-155.8	20-30% cpy., pyrr., pyr., blue qtz.	2788	0.4	TR	0.05	0.74
	155.8-208.0	Coarse basic					
208.0-297		Rhyolite; breccia, tuff, massive & porphyritic					
	208.0-211.0	Rhyolite; breccia, 2% cpy., pyrr., pyr., blue qtz.					
297.0		End of hole					

DRILLED BY A. McKnight

SIGNED \_\_\_\_\_

*Ralph I. Benner*  
 Ralph I. Benner



# DIAMOND DRILL RECORD

PROPERTY Nickel Rim Mines Limited

HOLE NO. 3

SHEET NUMBER 1 SECTION FROM \_\_\_\_\_ TO \_\_\_\_\_

STARTED July 7, 1965

LATITUDE 1920 S DATUM \_\_\_\_\_

COMPLETED July 15, 1965

DEPARTURE 1180 W BEARING 180°

ULTIMATE DEPTH 556.0

ELEVATION \_\_\_\_\_ DIP 60°

PROPOSED DEPTH \_\_\_\_\_

DEPTH FEET	FORMATION	SAMPLE NO.	WIDTH OF SAMPLE	AU	AG	NI	CU
0 - 9.0	Casing						
5.0 - 49.0	Diorite						
	at 31.5 - Fract'd., broken						
	" 36.0 - " "						
	" 41.0 - " "						
	" 49.0 - " "						
	" 51.6 - " "						
	" 53.0 - " "						
	" 58.0 - " "						
49.0 - 90.0	Leve						
	74.5 - 79.0 Porphyry Dike						
90.0 - 255.0	Diorite						
	90.0 - 126.0 - Serpentinized						
	126.0 - 138.0 - Fine Basic Dike, Feldspar, str.						
	155.0 - 177.0 - " " " "						
	165.4 - 188.0 - " " " "						
	180.0 - 181.0 - Fract'd.						
255 - 493.0	Leve - 15% pyr., fracturing acute to core						
	425.0 - 430.0 - Sheared						
	464.0 - 487.4 - 15 to 50% pyr., pyrr., cpy.						
	464.0 - 469.0	TR3-1	5.0	Nil	TR	0.3	0.10

DRILLED BY \_\_\_\_\_

SIGNED Robert L. Grew



# DIAMOND DRILL RECORD

**PROPERTY** Nickel Rim Mines Limited **HOLE NO.** 4  
 (Rib Lake)  
**SHEET NUMBER** 1 **SECTION FROM** \_\_\_\_\_ **TO** \_\_\_\_\_ **STARTED** July 3, 1965  
**LATITUDE** 1900 S **DATUM** \_\_\_\_\_ **COMPLETED** July 15, 1965  
**DEPARTURE** 1300 W **BEARING** South **ULTIMATE DEPTH** 699.0  
**ELEVATION** \_\_\_\_\_ **DIP** 60° **PROPOSED DEPTH** \_\_\_\_\_

DEPTH FEET	FORMATION	SAMPLE No.	WIDTH OF SAMPLE	GOLD \$	SLUDGE GOLD \$
0 - 11.0	Casing				
11.0 - 80.0	Diorite				
80.0 - 94.2	Lavas				
94.2 - 145.5	Diorite				
	110.0 - 112.0 - Fract'd. Calcite on slips				
	119.5 - 120.0 - Fract'd. slicks				
145.5 - 168.0	Lavas				
168.0 - 195.0	Diorite				
	169.0 - 174.0 - Fract'd.				
195.0 - 208.0	Lava				
208.0 - 436.5	Diorite				
	347.0 - 348.0 - Streaks & splashes cpy.				
	386.0 - 388.0 - Sheared 3-4% pyrr. cpy.				
	388.0 - 415.0 - 1-3% pyrr., cpy.				
	415.0 - 436.5 - Sheared, serpenitened				
436.5 - 479.5	Lava				
	462.0 - 479.5 - Lava				
	462.0 - 467.0 -	NR4-1	5.0		
	467.0 - 472.0 -	NR4-2	5.0		
	472.0 - 477.0 -	NR4-3	5.0		
	477.0 - 479.5 -	NR-4	2.5		

N.M.P. TORONTO-STOCK FORM NO. 501 REV. 12/51

DRILLED BY .....

SIGNED Carl H. Keenan



RALPH I. BENNER, B.Sc., P.ENG.

GEOLOGIST

BOX 208 PHONE 679-5757 COBALT, ONT.

August 10, 1972

Mr. A.W. White, Pres.  
Nickel Rim Mines Ltd.  
Suite 416  
25 Adelaide St. W.  
Toronto, Ont..



31M04NE9712 16 GILLIES LIMIT

020

Dear Sir:

Re Whitney Lake Property

Stripping and rock excavating operations were carried out on the above property during the months of May, June, and July, of this year. The work, carried out by the Arney Construction Company of North Cobalt, was done at two separate locations; on claims L263836 & L263902 near Deiter Lake on the west part of the property, and on claim T53537 one half mile to the east.

The purpose of this work was to expose and blast into, the copper-nickel sulphide bodies as indicated by geophysical methods and determined by diamond drilling, and if feasible to obtain an overall grade by bulk sampling.

In the Deiter Lake area heavier overburden than anticipated was encountered and as a result this part of the operation was not very successful. A trench was bull-dozed for a length of 550', from 50' to 120' in width, and approximately 12' in depth. The Ultrabasic rocks containing the conductive zone were exposed in only 2 places, 200' apart. The most westerly exposure when blasted into, showed massive and disseminated sulphides (mainly pyrrhotite) over a width of 30'. Nickel and copper values were low.

A hole drilled previously beneath this section gave values of 0.26% copper and 0.24 nickel over 20.1' at the 330' horizon.

On claim T53537, 400' east of Highway no. 11, the overburden was relatively light and the rusty oxidized zone, occurring in the Ultrabasics adjacent to the Rhyolites, was exposed for the full length of the clearing (300'). A new sulphide showing was exposed 20' south of the main zone, in the Rhyolites near the eastern extremity of the clearing.

Trenches were blasted into the main zone in three different locations, and disseminated and massive pyrite and pyrrhotite were encountered in each pit. Selected samples from each pit, although showing higher values than obtained in the west excavation, still could not be considered ore grade. As a result it was decided that bulk sampling would serve no useful purpose.



Whitney Lake

- 2 -

A drill hole put down previously under this area, gave assays of 0.2% Copper and 0.57% nickel over 23.1' at the 330' horizon.

Several blast holes were put into the new showing, exposing massive sulphides, with assays of nickel and copper comparable to the main zone.

It is recommended that the new zone be tested by diamond drilling. One thousand feet should be sufficient for the initial test.

Respectfully yours

  
Ralph I. Benner

THE TOWNSHIP OF  
**GILLIES LIMIT**  
 (SOUTH PART)  
 DISTRICT OF  
 TIMISKAMING

SUBBURY  
 MINING DIVISION  
 SCALE: 1 INCH = 20 CHAINS

- LEGEND**
- PAVED LAND
  - CROWN LAND SALE
  - LOCATED LAND
  - UNLOCATED LAND
  - LICENSE OF OCCUPATION
  - MINING RIGHTS ONLY
  - SURFACE RIGHTS ONLY
  - IMPROVED ROADS
  - KINGS HIGHWAYS
  - RAILWAYS
  - POWER LINES
  - MARSH OF MUSKEE
  - MINES

**NOTES**

The Twp. Lies Within The  
 TIMAGAMI PROVINCIAL FOREST.

400' Surface Rights Reservation Around All  
 Lakes And Rivers

Mining Claims, Accepted - Subject To Sec 33  
 Of The Mining Act.

L.O. 7558 Covers Flooding Rights On Montreal  
 River upstream from The Upper Mouch Power  
 Site To Crown Elevation 788-5.

NOTE: ELEVATION 2031.4 FOR 3'  
 RESERVE FLOODING RIGHTS TO H.E.C. (MONTREAL)  
 TO CONTOUR 900.5.



PLAN NO.-M-483  
 ONTARIO  
 MINISTRY OF NATURAL RESOURCES  
 SURVEYS AND MAPPING BRANCH

North Part Gillies Limit (M.484)

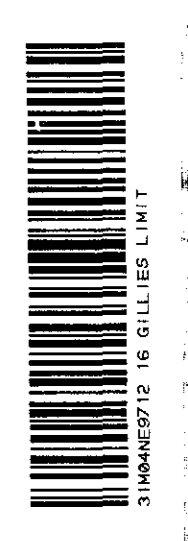
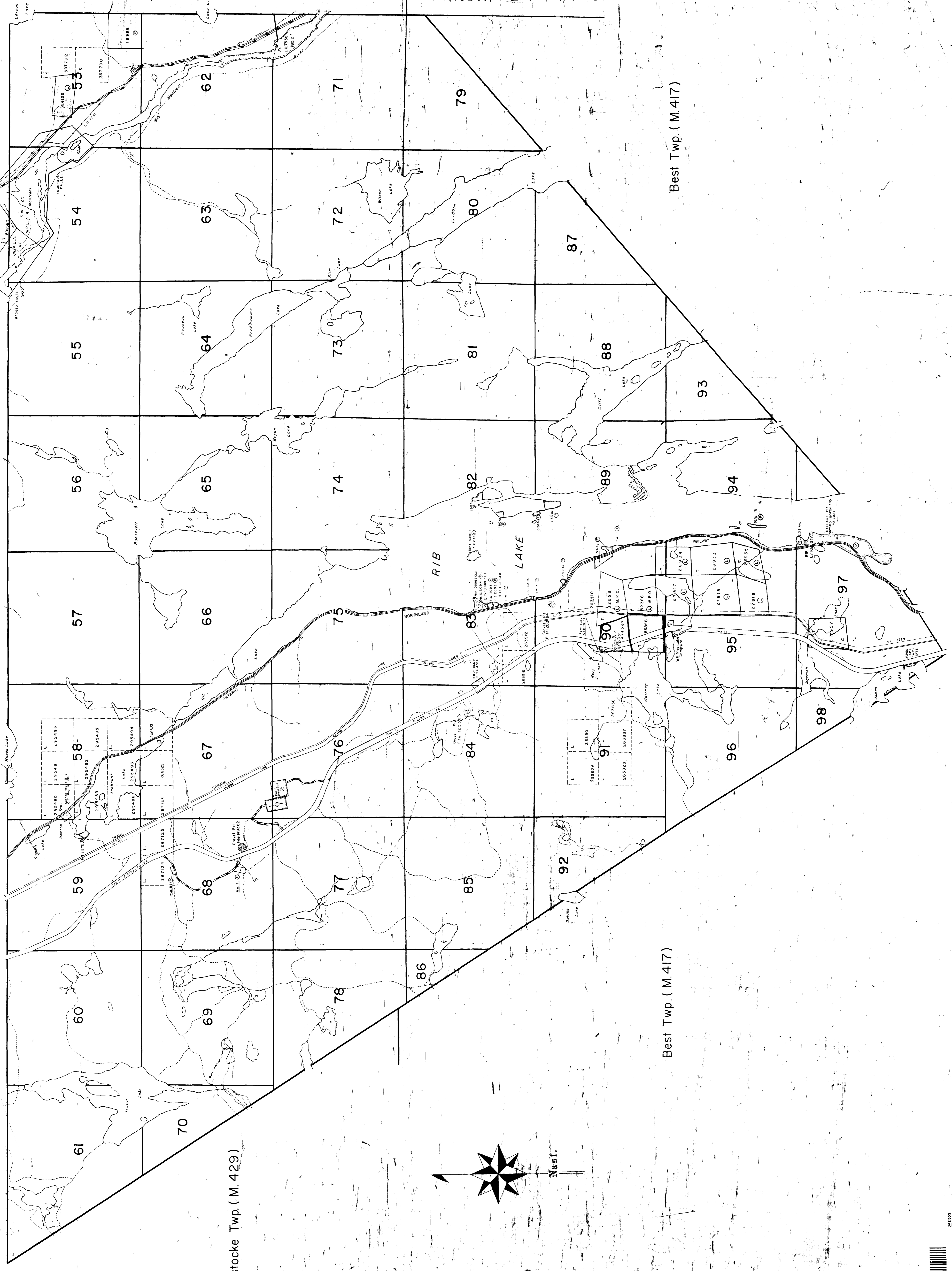
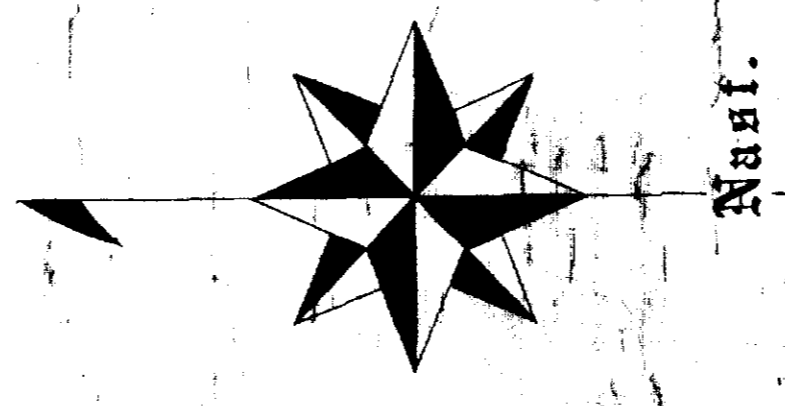
Lorain Twp. (M.536)

South Lorain Twp. (M.591)

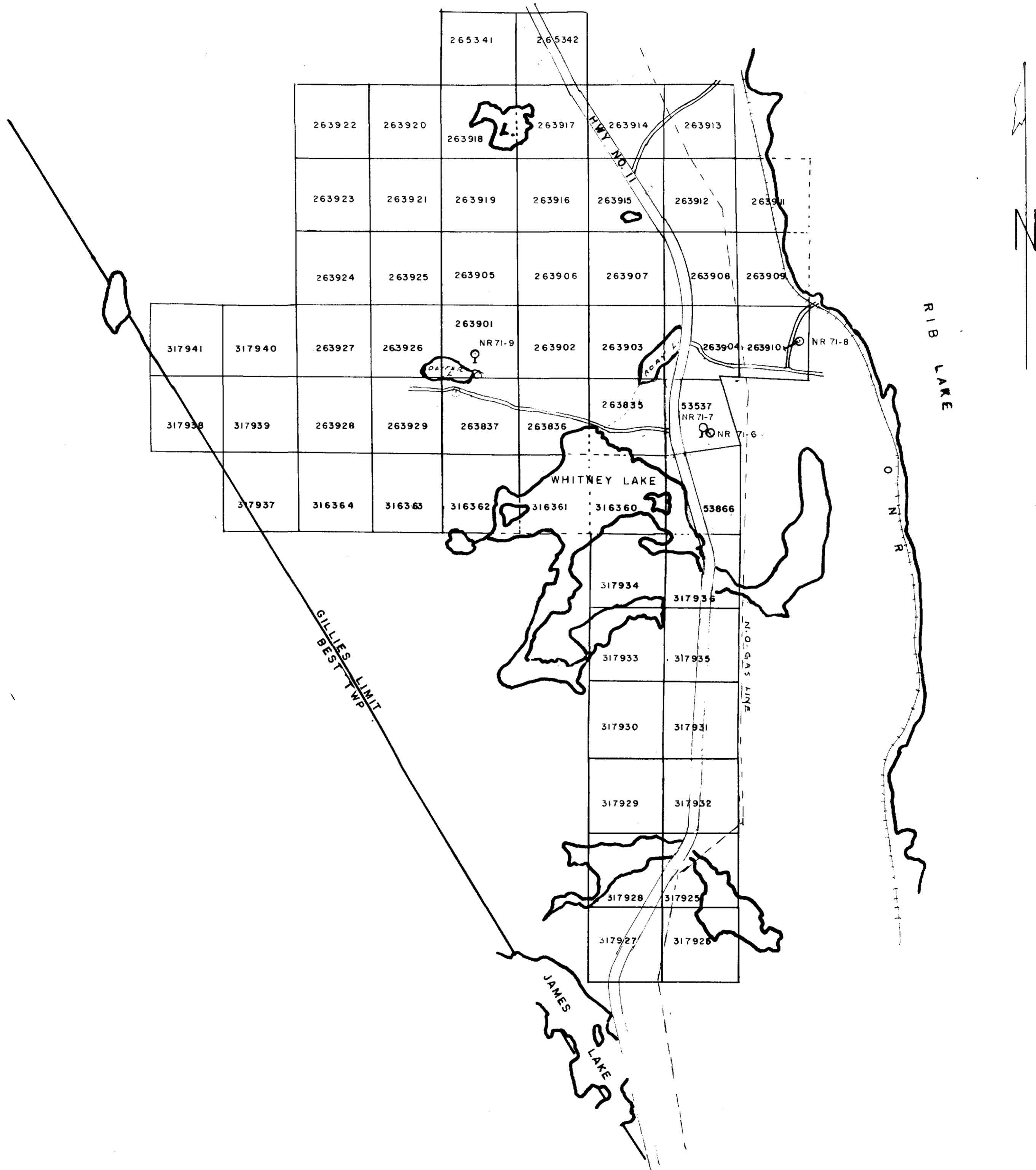
Best Twp. (M.417)

Best Twp. (M.417)

Brigstocke Twp. (M.429)



MID NORTH ENGINEERING SERVICES LIMITED



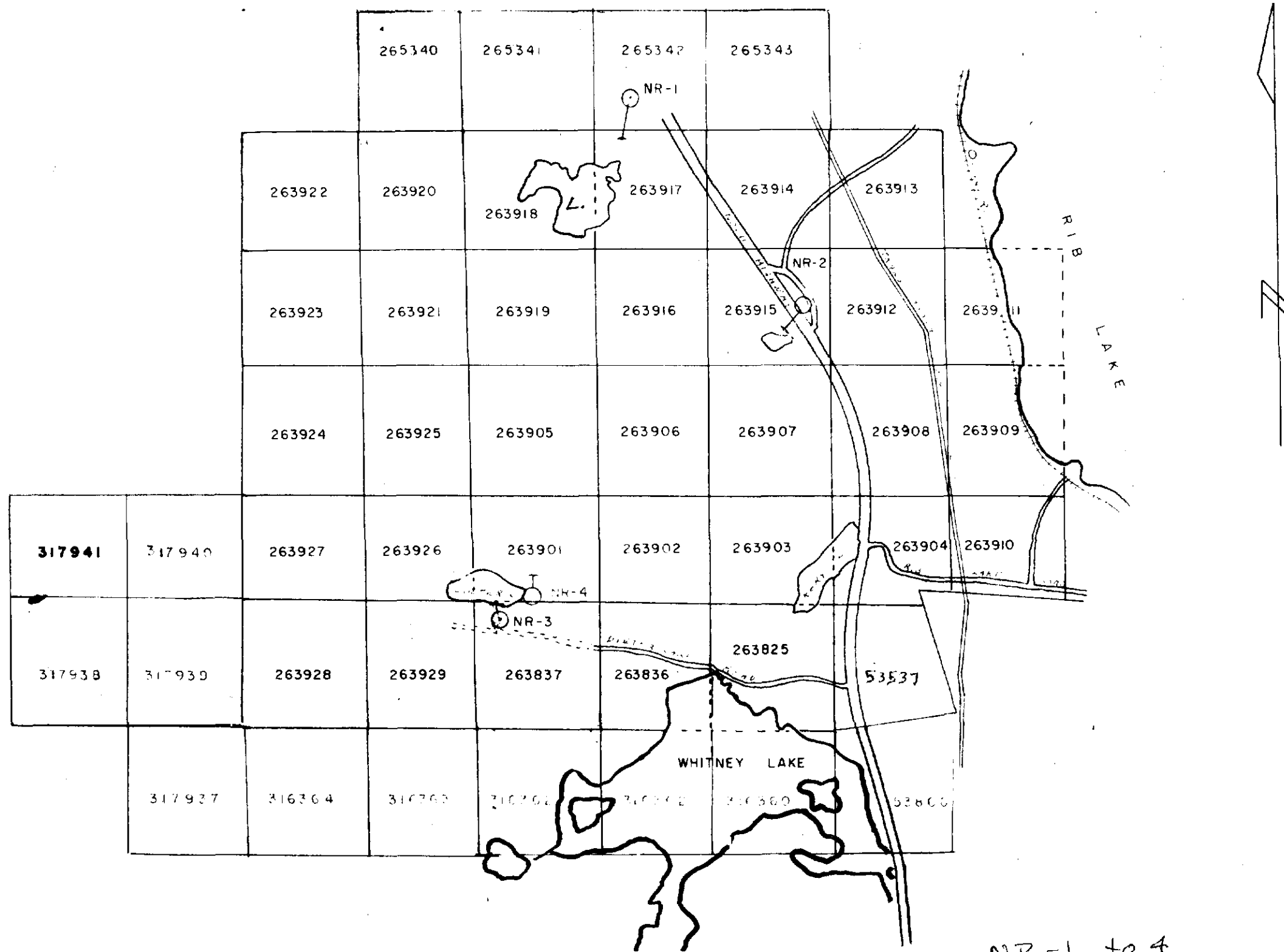
**DRILL HOLE LOCATIONS NR 71-6, 7, 8**  
**NICKEL RIM MINES LTD. — WHITNEY LAKE PROPERTY**  
**LARDER LAKE MINING DIVISION**  
**DISTRICT OF TIMISKAMING**



3184NE9712 16 GILLIES LIMIT

**MID NORTH ENGINEERING SERVICES LIMITED**

#179/71



**DRILL HOLE LOCATIONS**  
**NICKEL RIM MINES LTD. WHITNEY LAKE PROPERTY**  
 LARDER LAKE MINING DIVISION  
 DISTRICT OF TIMISKAMING

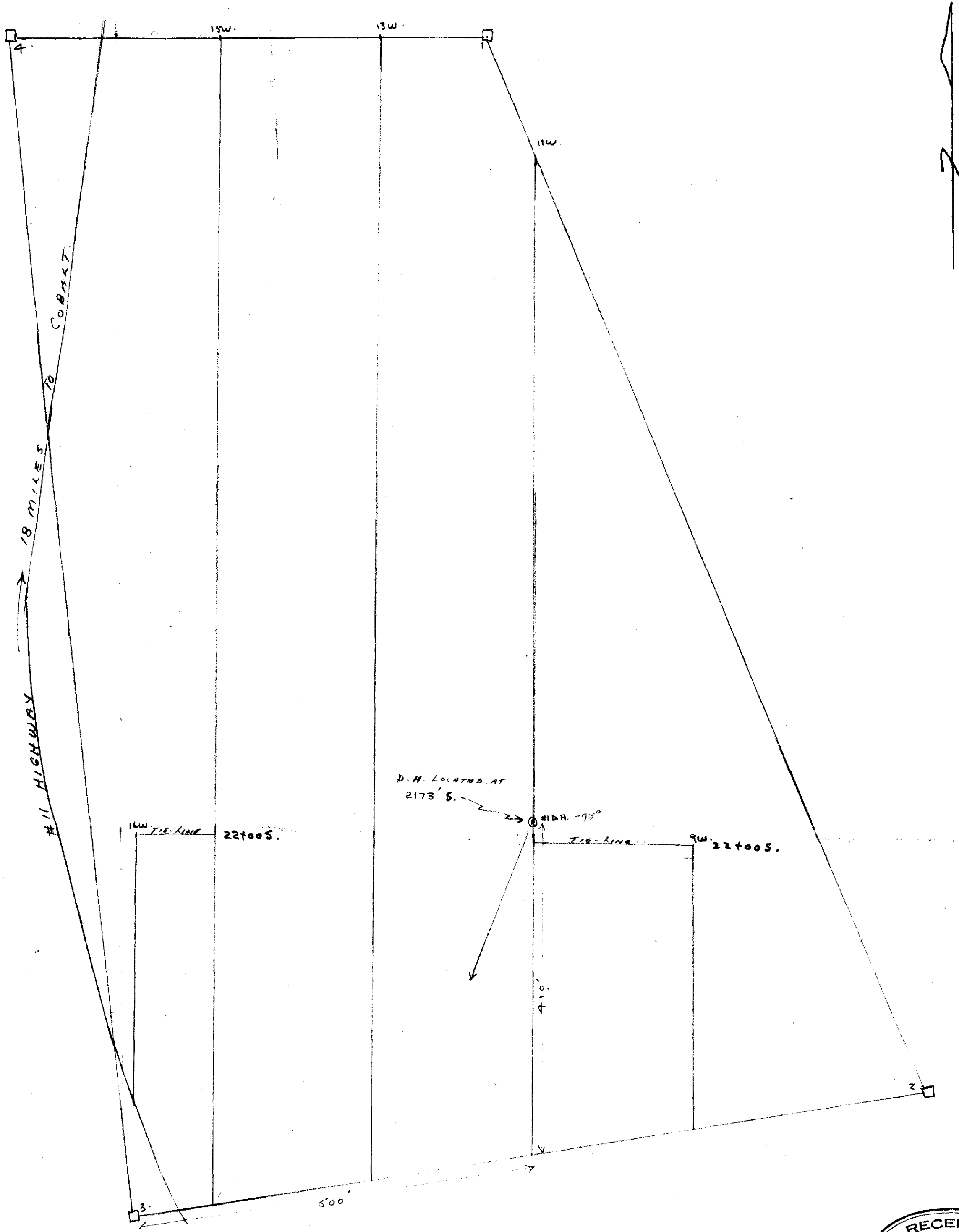
179

SCALE - 1 INCH = 1320 FEET



31M04NE9712 16 GILLIES LIMIT





MID-NORTH ENGINEERING SERVICES LIMITED.  
 ASSESSMENT DIAMOND DRILL HOLE  
 CLAIM NO. T. 53537 GILLIES LIMIT.

SCALE: 1 INCH = 100 FEET

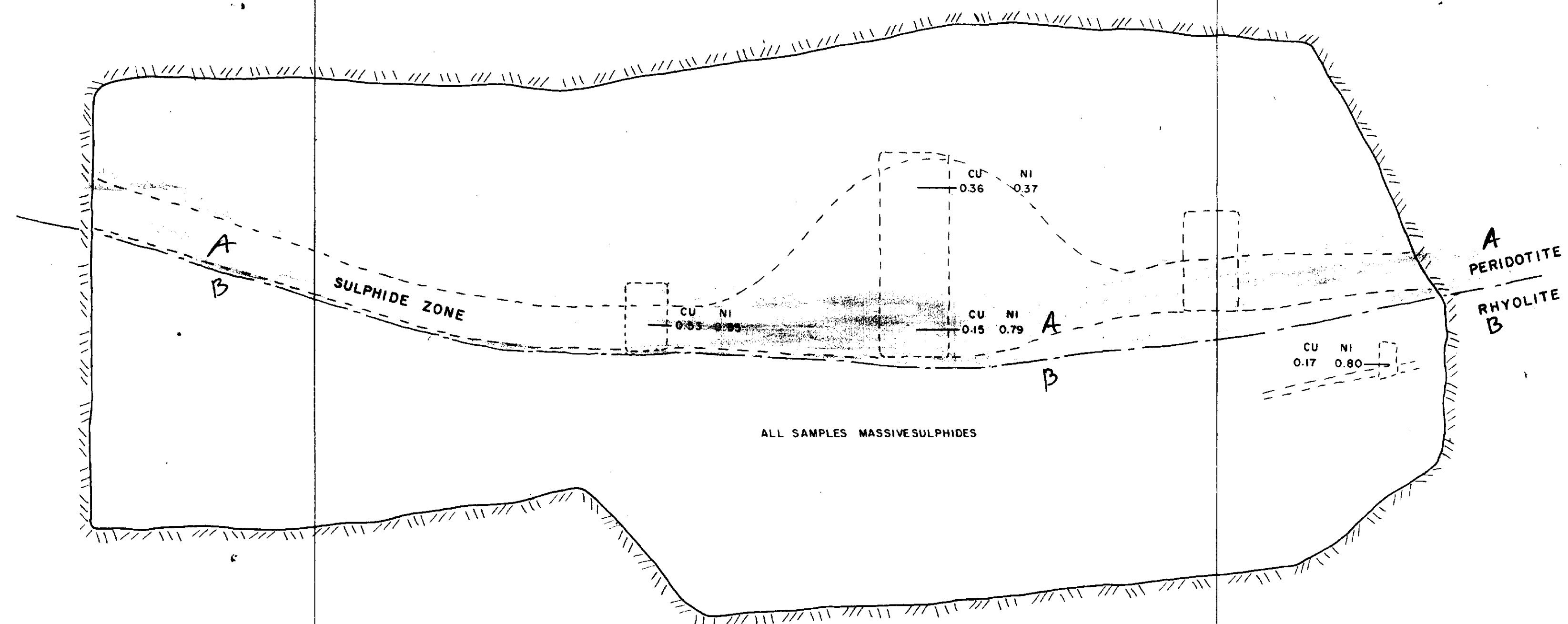
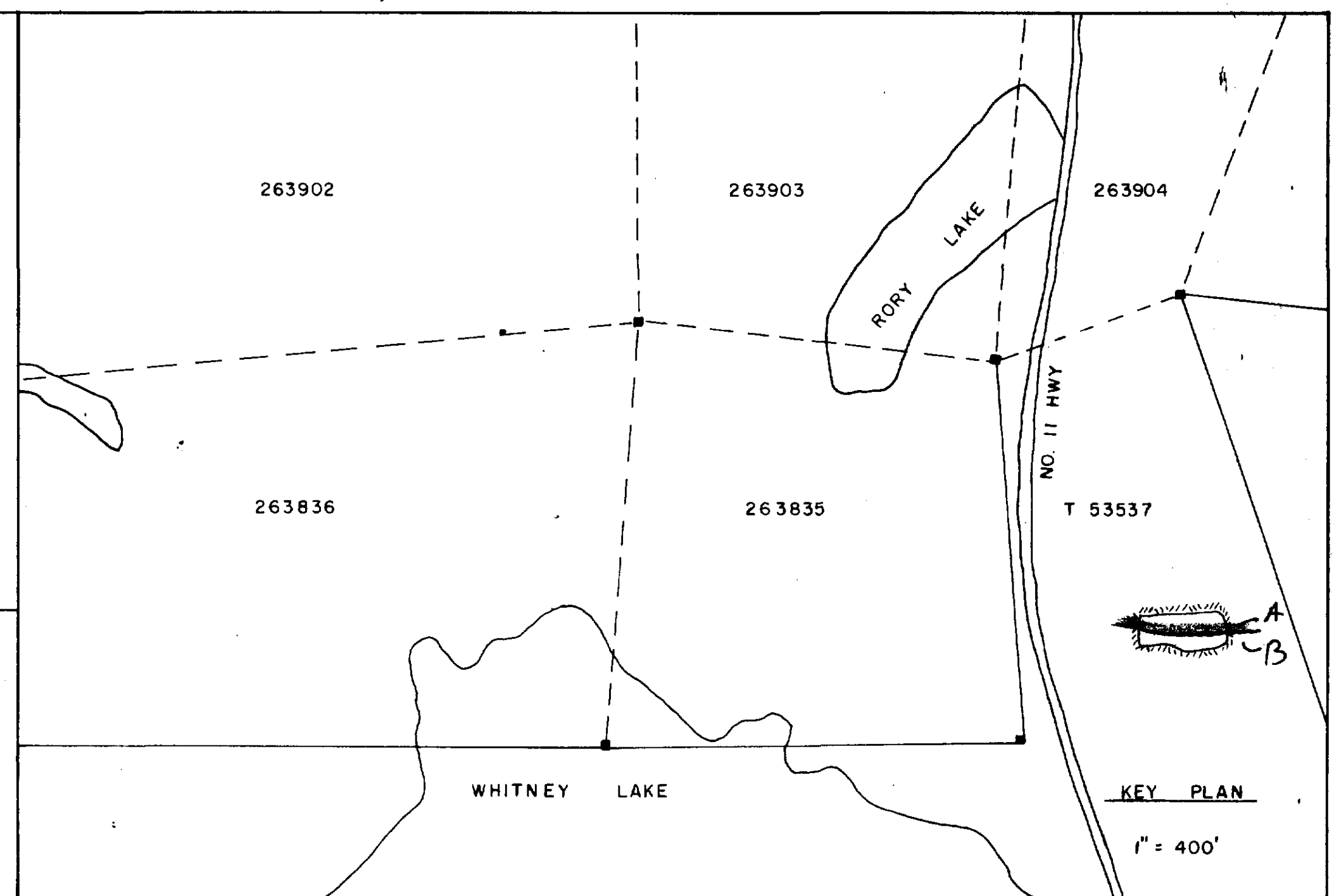


MA 2/64





T.L. 22+00 S

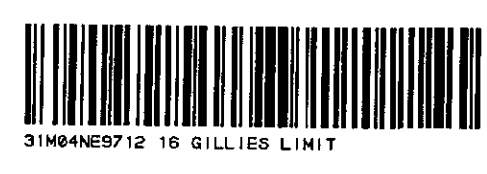


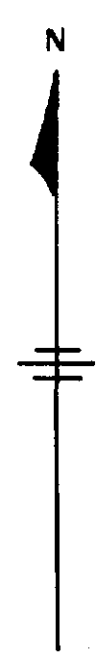
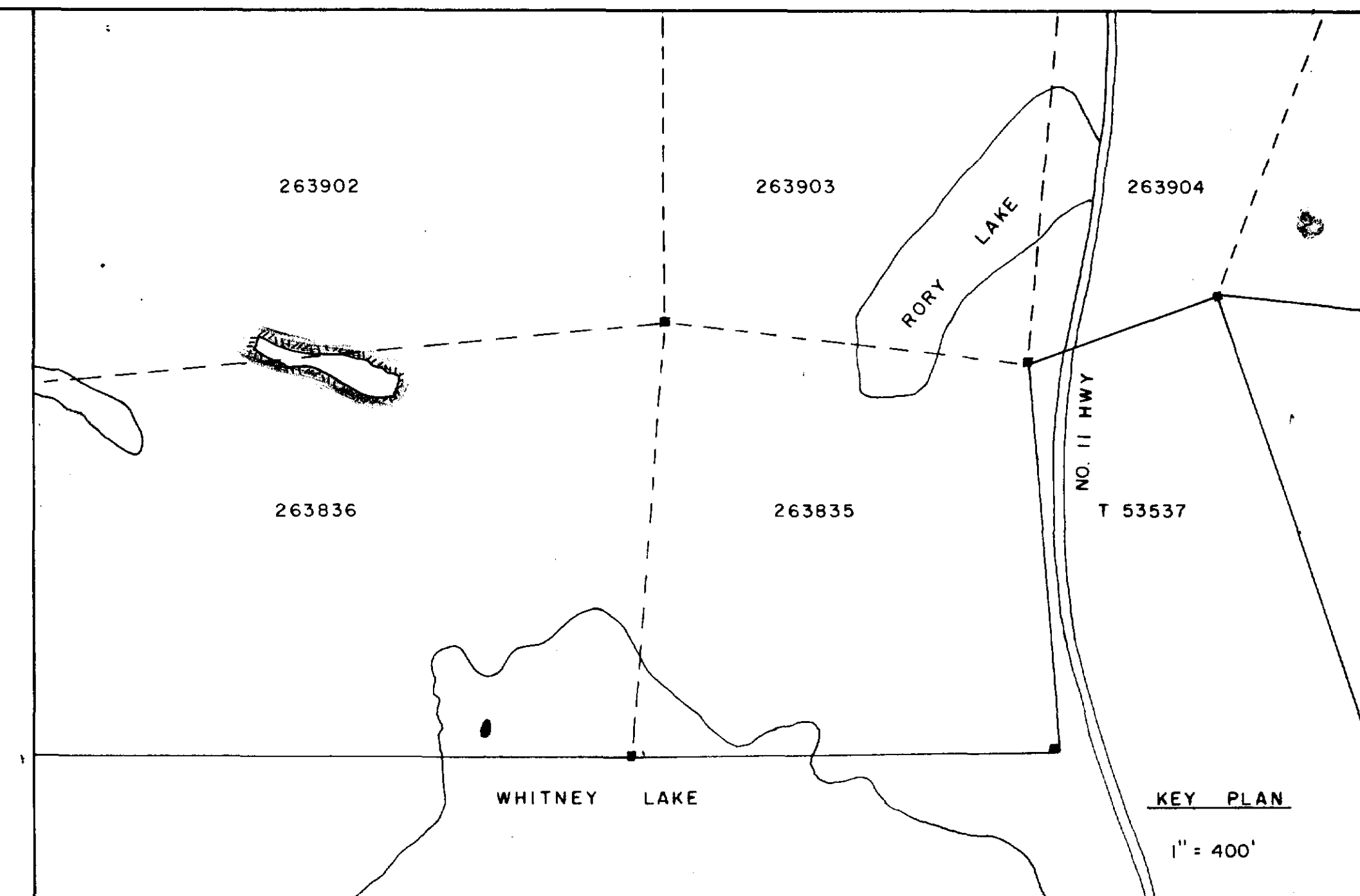
NICKEL RIM MINES LTD.

WHITNEY LAKE PROPERTY  
SURFACE STRIPPING & ROCK PITS  
LARDER LAKE MINING DIVISION  
DISTRICT OF TIMISKAMING

DRAWN: G.M. KENTY	DATE: 12 JULY 72
CHECKED:	SCALE: 1" = 20'
APPROVED:	DRAWING NO.

(20) G.M. Kenty





263902

263836

A

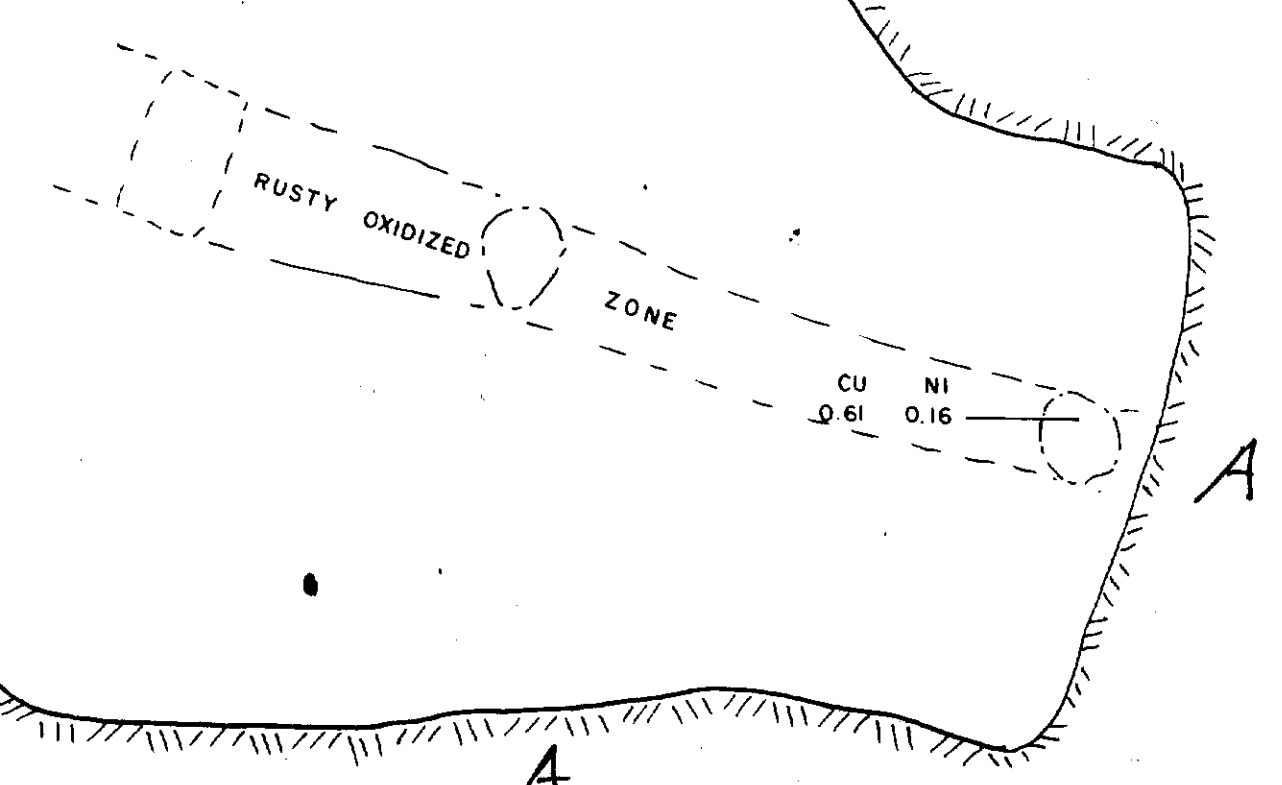
A

A

A

CU	NI
0.03	0.14
CU	NI
0.07	0.10
CU	NI
0.05	0.58

ALL SAMPLES MASSIVE SULPHIDES



A ■ PERIDOTITE

**NICKEL RIM MINES LTD.**

WHITNEY LAKE PROPERTY  
SURFACE STRIPPING & ROCK PITS  
LARDER LAKE MINING DIVISION  
DISTRICT OF TIMISKAMING

DRAWN: G. M. KENTY	DATE: 14 JULY 92
CHECKED:	SCALE: 1" = 20'
APPROVED:	DRAWING NO.



(2X3) 659 ft.