

GILLIES LIMIT TOWNSHIP REPORT #11

This file contains work performed by Coniagas Mines on claims:

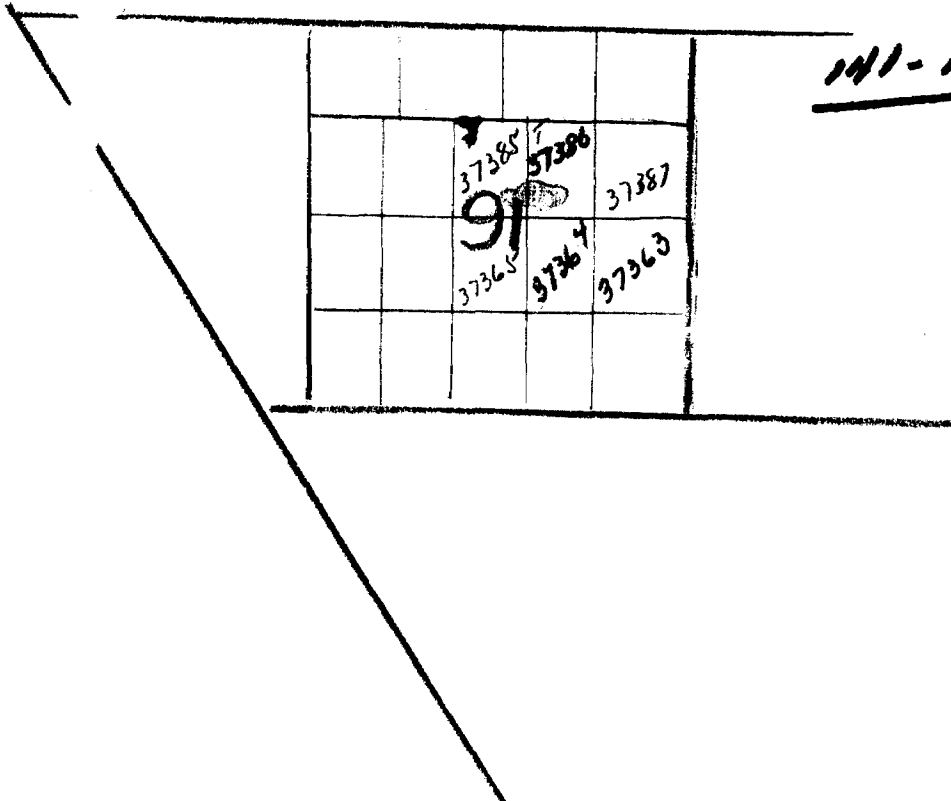
T.37363	300	Hole #1;	1956
T.37386	319	Hole #3;	1956
	304	4;	1956
T.37364	224	Hole #5;	1956

~~1211~~



31M04NE9719 11 GILLIES LIMIT

Diaries Limit South



141-142

PROPERTY

CONIAGAS MINES LIMITED  
GILLIES LIMIT-Onabari

PROJECT 141

PAGE 1

LOCATION 2+00 W - 2+00 S BEARING North 45° HOLE NO. 141-1

LOGGED BY O.A. Seebor ELEVATION \_\_\_\_\_ DIP \_\_\_\_\_ FINAL DEPTH 300.0'

STARTED March 9, 1956 TESTS (CORRECTED) \_\_\_\_\_

FINISHED March 19, 1956

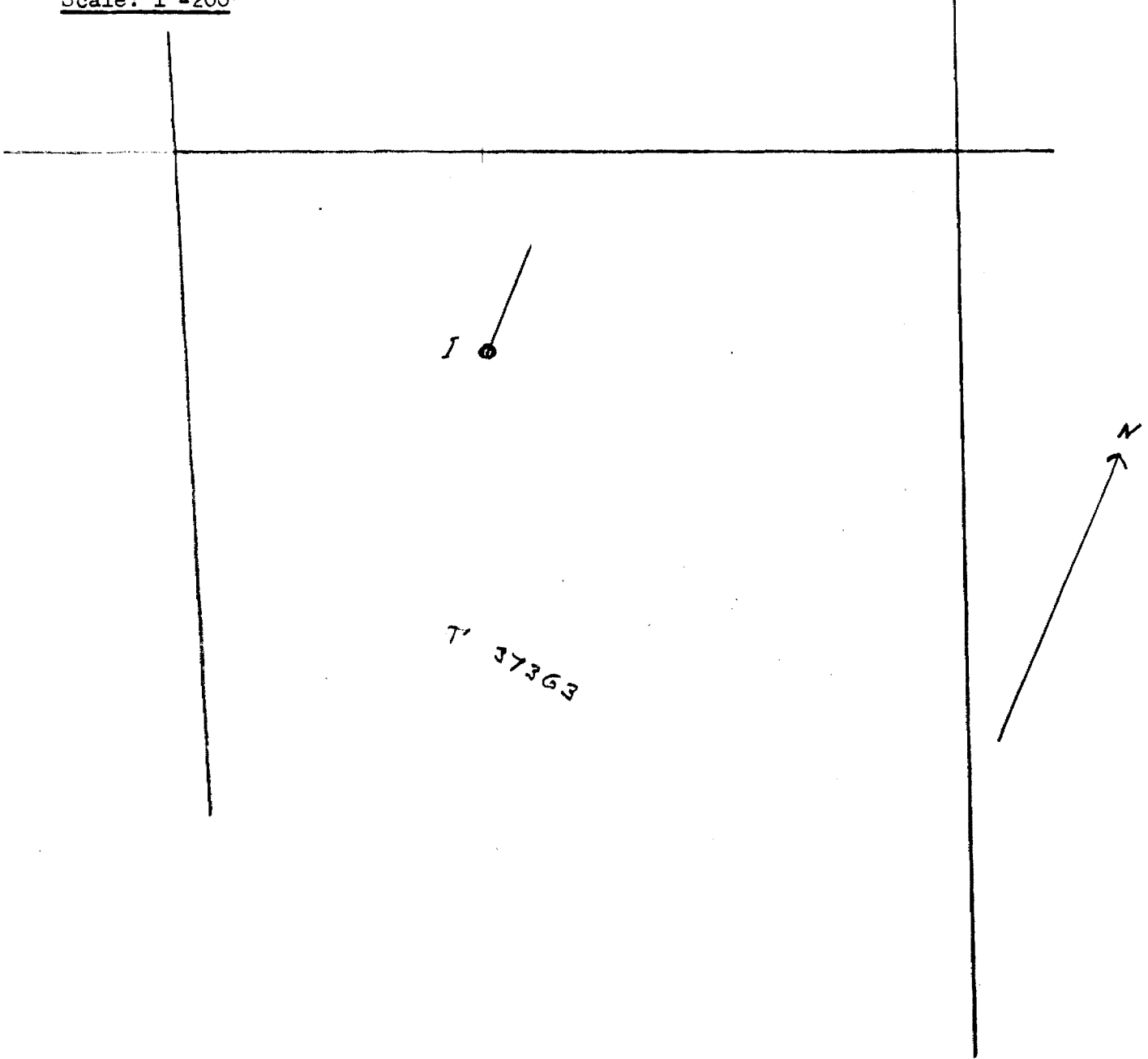
CASING 22.0' (Pulled)

CORE SIZE gyp

FROM	TO	DESCRIPTION
0.0	22.0	CASING: 0.0 - 18.0' Overburden, boulders and clay
22.0	24.5	GREYWACKE:
24.5	27.0	RED GHEERT: impure sediment 27.0' - 2" of quartz, barren
27.0	31.5	DIORITE: for 6" medium grained, no sulphides 27.5-31.5' Core missing
31.5	75.0	GABBRO: Strongly sheared. Serpentine developed in joint planes somewhat talcosed no visible sulphide. 40.5-45.0' - Core missing
75.0	100.0	GABBRO: Medium grained, shearing not as pronounced as in previous entry. 82.5- Disseminated pyrite 87.5' " " 92.0' " " 97.5' " "
100.0	264.5	FINE GRAINED SHEARED GABBRO: Weak scattered pyrite crystals also some very minor and weak chalcopyrite throughout 155.0-264.5' - Strongly sheared at 45° to core. Serpentine and talc with minor weak sulphides. 256.5-258.5' - Pyrrhotite and pyrite stringers in sheared gabbro.
264.5	271.5	TRAP DIKE: Dark and fine grained. Weak pyrite.
271.5	300.0	GABBRO: Ditto above with serpentine and talc.
	300.0	END OF HOLE

Sketch showing location of Drill Hole No. 1 on mining claim T37363

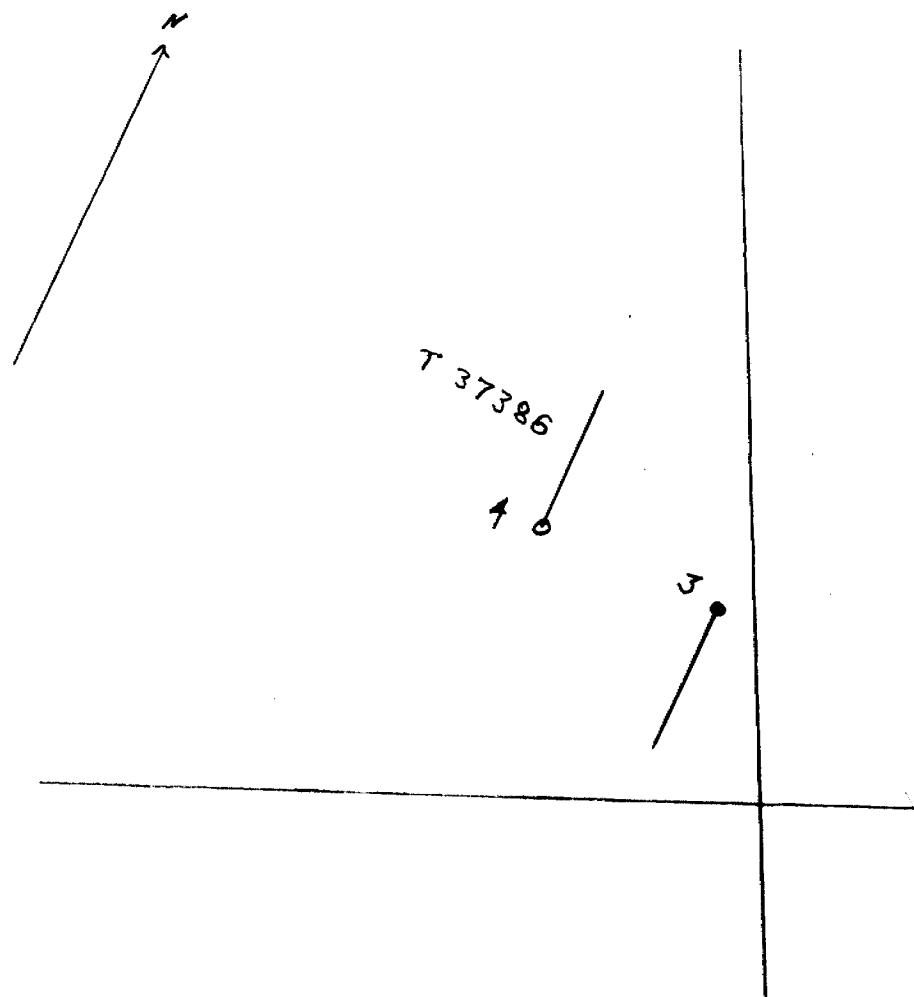
Scale: 1"=200'





Sketch showing location of Drill Hole No. 3 and 4 on mining claim T37386

Scale: 1"=200'



PROPERTY CONIAGAS MINES LIMITED  
GILLIES LIMIT - Ont.

PROJECT 141 PAGE 1

LOCATION 850' W of OY 100 - 100° N BEARING \_\_\_\_\_ HOLE NO. 141-3

LOGGED BY O. A. Seeber ELEVATION \_\_\_\_\_ DIP \_\_\_\_\_ FINAL DEPTH \_\_\_\_\_

STARTED March 27, 1956 TESTS (CORRECTED) 319.0'

FINISHED April 5, 1956

CASING \_\_\_\_\_

CORE SIZE \_\_\_\_\_

T 37 386

FROM	TO	DESCRIPTION
0.0	12.5	CASING;
12.5	35.0	GABBERO: Silicified and altered. Minor disseminated sulphides (2-3%) mostly pyrite, some pyrrhotite. Limonite developed on joint planes.
35.0	50.2	FINE GRAINED SILICEOUS DIORITIC TYPE OF ROCK; No sulphides noted. 40.0-41.0' - sheared material, some pyrite and weak pyrrhotite.
50.2	51.0	DARK FINE GRAINED CHLORITIC
51.0	67.5	FINE GRAINED SILICEOUS INTRUSIVE; Possibly diorite. Weak scattered pyrite. Minor pyrrhotite (disseminated)
67.5	74.0	TUFF: Medium to fine grained. No sulphides.
74.0	154.2	GABBERO: Medium grained, variable disseminated pyrite, minor pyrrhotite associated with weak shearing. 74 - 75' Sheared and fine grained. 95 - 95.8' Massive pyrite stringers, minor pyrrhotite at 45° to core. 125-150' Coarser grained, weaker dissemination. 150-154.2' Becoming finer grained more disseminated sulphides, mostly pyrite.
154.2	176.0	FINE GRAINED INTRUSIVE: Could be diorite, more disseminated sulphides, pyrrhotite content increasing 161 - 163' Sheared, talcose.
176.0	200.0	DITTO ABOVE: Sulphides increasing to 4-5% with increasing pyrrhotite content. Chalcopyrite not noticeable. 190 - 190.8' massive pyrrhotite 199- 199.5' " " "

Cont'd next page

PROPERTY CONIAGAS MINES LIMITED  
GILLIES LIMIT - Ont.

PROJECT 141

PAGE 2

LOCATION \_\_\_\_\_ BEARING \_\_\_\_\_ HOLE NO. 141-3

LOGGED BY \_\_\_\_\_ ELEVATION \_\_\_\_\_ DIP \_\_\_\_\_ FINAL DEPTH \_\_\_\_\_

STARTED \_\_\_\_\_ TESTS (CORRECTED) \_\_\_\_\_

FINISHED \_\_\_\_\_

CASING \_\_\_\_\_

CORE SIZE \_\_\_\_\_

FROM	TO	DESCRIPTION
200.0	222.0	Moderate - strong pyrite disseminated in medium grained gabbro. Weakly sheared with very minor chalcopyrite and pyrrhotite.
222.0	319.0	GABBRO; Weak disseminated pyrite, minor pyrrhotite and chalcopyrite. 235.0- 252.5 - 10% disseminated pyrite. 338.0- 240.0' - Core missing 262.0- 265.0' - Ditto 268.0' - 2" of fault gouge. 275.0-296.0' - Increase in pyrrhotite dissemination over the pyrite content. 296.0 - 300' - Stringers and blebs 10% pyrrhotite with very minor chalcopyrite and pyrite . 300.0-301.0' - Strong pyrite.
	319.0	END OF HOLE

HOLE NO. 141-3



SAMPLE RECORD SHEET

141-3 -HOLE NO.  
1 -PAGE

PROPERTY- CONIAGAS MINES LIMITED - GILLIES LIMIT - PROJECT 141

SAMPLE NO.	FROM	TO	LENGTH	ASSAYS				DESCRIPTIONS
				% Cu	% Ni			
141- 1	15.0	20.0	5.0	.08	.27			Gabbro-tuff, 2% sulphides
141- 2	25.0	30.0	5.0	.13	.11			" " 2 1/2% "
141- 3	30.0	35.0	5.0	.14	.32			Gabbro 2 1/2% sulphides
141- 4	75.0	80.0	5.0	.08	.36			Gabbro 2% Sulphides
141- 5	80.0	85.0	5.0	.15	.40			" 3% "
141- 6	85.0	90.0	5.0	.06	.40			" 3% "
141- 7	90.0	95.0	5.0	.08	N.D.			" 2% "
141- 8	95.0	100.0	5.0	.15	.37			Sheared gabbro 1 1/2% sulphides
141- 9	150.0	155.0	5.0	N.D.	N.D.			Gabbro some tuff 2% sulphides
141-10	170.0	175.0	5.0	N.D.	N.D.			Gabbro 1 1/2% sulphides
141-11	175.0	180.0	5.0	N.D.	N.D.			" 4% "
141-12	180.0	185.0	5.0	N.D.	N.D.			" 1% "
141-13	185.0	190.0	5.0	.10	N.D.			" 1% "
141-14	190.8	195.0	4.4	.07	.12			Gabbro 1% sulphides

SAMPLE RECORD SHEET

141-3 -HOLE NO.  
2 -PAGE

PROPERTY- CONLAGAS MINES LIMITED - GILLIES LIMIT -PROJECT 141

SAMPLE NO.	FROM	TO	LENGTH	ASSAYS				DESCRIPTIONS
				% Cu	% Ni			
141-15	195.0	199.0	4.0	.05	.10			Gabbro 1% Sulphides
141-16	199.0	199.5	.5"	.17	.51			Gabbro 18% Sulphides
141-17	205.0	209.0	4.0	.10	.13			Quartz mixed with gabbro 3% sulphides
141-18	217.6	220.0	2.6	.05	.05			Quartz with greenish rock 16% sulphides
141-19	220.0	222.0	2.0	.07	.03			Quartz with greenish rock 4% sulphides
141-20								
141-20	240.6	245.0	4.6	.15	.13			Tuff 12% sulphides
141-21	295.6	300.0	4.6	.07	.11			Gabbro 4% sulphides
141-22	300.0	303.6	3.6	Tr	.19			" 20% sulphides

PROPERTY CONLAGAS MINES LIMITED

PROJECT 141 PAGE 1  
GILLIES LIMIT-Ont.

LOCATION 10+00 W - 1+00 N BEARING North on Grid MOLE NO. 141-4

LOGGED BY O.A. Seebor ELEVATION \_\_\_\_\_ DIP 45° FINAL DEPTH 304.0'

STARTED April 6, 1956 TESTS (CORRECTED) \_\_\_\_\_

FINISHED April 11, 1956

CASING 20.0' (Pulled)

CORE SIZE EXT

FROM	TO	DESCRIPTION
0.0	20.0	CASING:
20.0	26.0	COARSE GRAINED FELDSPATHIC GABBRO; No apparent sulphides 22.0 - 23.0' - Core missing 24.5' - 3" fine grained trap dike 25.0 - 26.0' - Core missing
26.0	26.5	APALITE DIKE:
26.5	100.0	GABBRO; Medium grained, badly broken and sheared throughout.  Core Missing: 26.5-27.0' 28.5-30.0' 30.5-31.0' 31.5-32.0' 40.0-42.0' 43.0-44.5' 45.0-46.5' 47.5-48.3' 70.0-72.0' 74.5-75.0'
100.0	304.0	GABBRO; Serpentinized and talcosed, sheared throughout in places badly broken. 150.0-175.0' - Very badly broken 156.0-157.5' - Core missing 162.0-164.0' - Core missing
	304.0	END OF HOLE

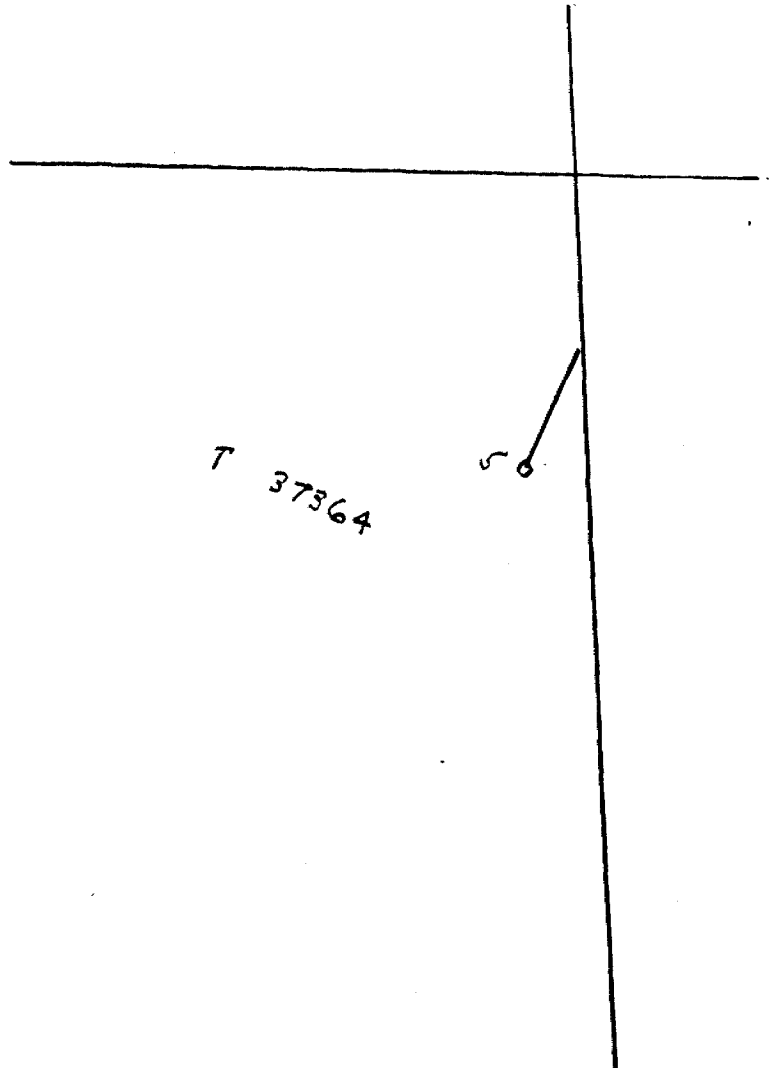
HOLE NO.

141-4

DOCKET NO. 2008

Sketch showing location of Drill Hole No. 5 on mining claim T37364

Scale: 1"=200'



PROPERTY CONIAGAS MINES LIMITED  
PROJECT 141 - GILLIES LIMITED.

LOCATION 6+00 W - 0+50 S BEARING North on Grid HOLE NO. 141-5

LOGGED BY O. A. Seaber ELEVATION \_\_\_\_\_ DIP -60° FINAL DEPTH 288.0'

STARTED April 12, 1956 TESTS (CORRECTED) \_\_\_\_\_

FINISHED April 14, 1956 \_\_\_\_\_

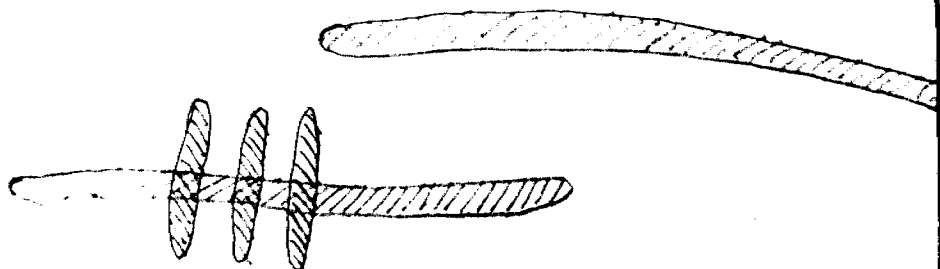
CASING 20.0' (Pulled) \_\_\_\_\_

CORE SIZE KXT

FROM	TO	DESCRIPTION
0.0	20.0	CASING;
20.0	288.0	MEDIUM GRAINED BARREN GABRO; Some minor shearing about 60° to core. 105.0-175.0' - Weak scattered pyrite crystals throughout.
	288.0	END OF HOLE

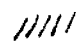
Sketch showing location of stripping and trenching on claims T37386 and T37364.

T37386



T37364



Stripping   
Trenching 