

REPORT ON ELECTRICAL SELF POTENTIAL SURVEY

33.802

PART OF

31M04SE0008 63.802 CASSELS

CASSELS LAKE PROPERTY, CASSELS

010

BYGEOPHYSICAL ENGINEERING & SURVEYS LIMITEDINTRODUCTION

An electrical survey was carried out on a group of 15 claims numbered T40468 to T40475 incl., T40477 to T40481 inclusive, T40483 and T40484 located on the north side of Cassels Lake in Cassels Township, province of Ontario.

The claims may be reached by boat along Snake Lake and Cassels Lake from the village of Temagami.

GENERAL GEOLOGY

The central portion of the claim group is underlain by Keewatin-type volcanic rocks. Cobalt sediments are exposed to the south of these volcanic rocks and Nipissing diabase to the north.

GEOPHYSICAL SURVEY

Readings of electrical self-potential were made using a D.C. potentiometer connected between two non-polarizing electrodes. The readings were reduced to an arbitrary base level and plotted as negative self-potentials in millivolts.

RESULTS OF GEOPHYSICAL SURVEY

An anomaly area extending from line 32+00 to the western boundary of the property was outlined by the survey. Only near the base line at the eastern end of the anomaly area do the readings suggest appreciable sulphide concentration along this anomaly.

CONCLUSIONS & RECOMMENDATIONS

The anomaly area discussed above should be further investigated by detailed geophysical surveying and geological examination.

Respectfully submitted,

A. L. Clark

for

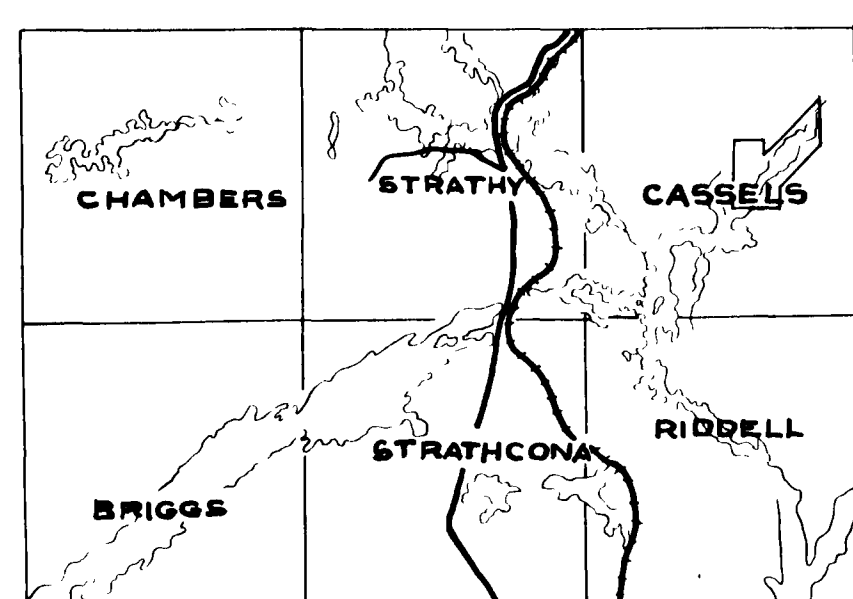
J. C. Frantz

GEOPHYSICAL ENGINEERING & SURVEYS LTD.

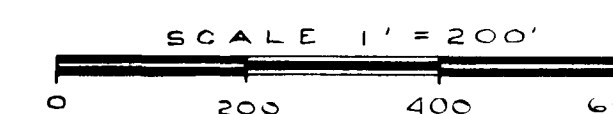
North Bay, Ontario
January 23, 1957



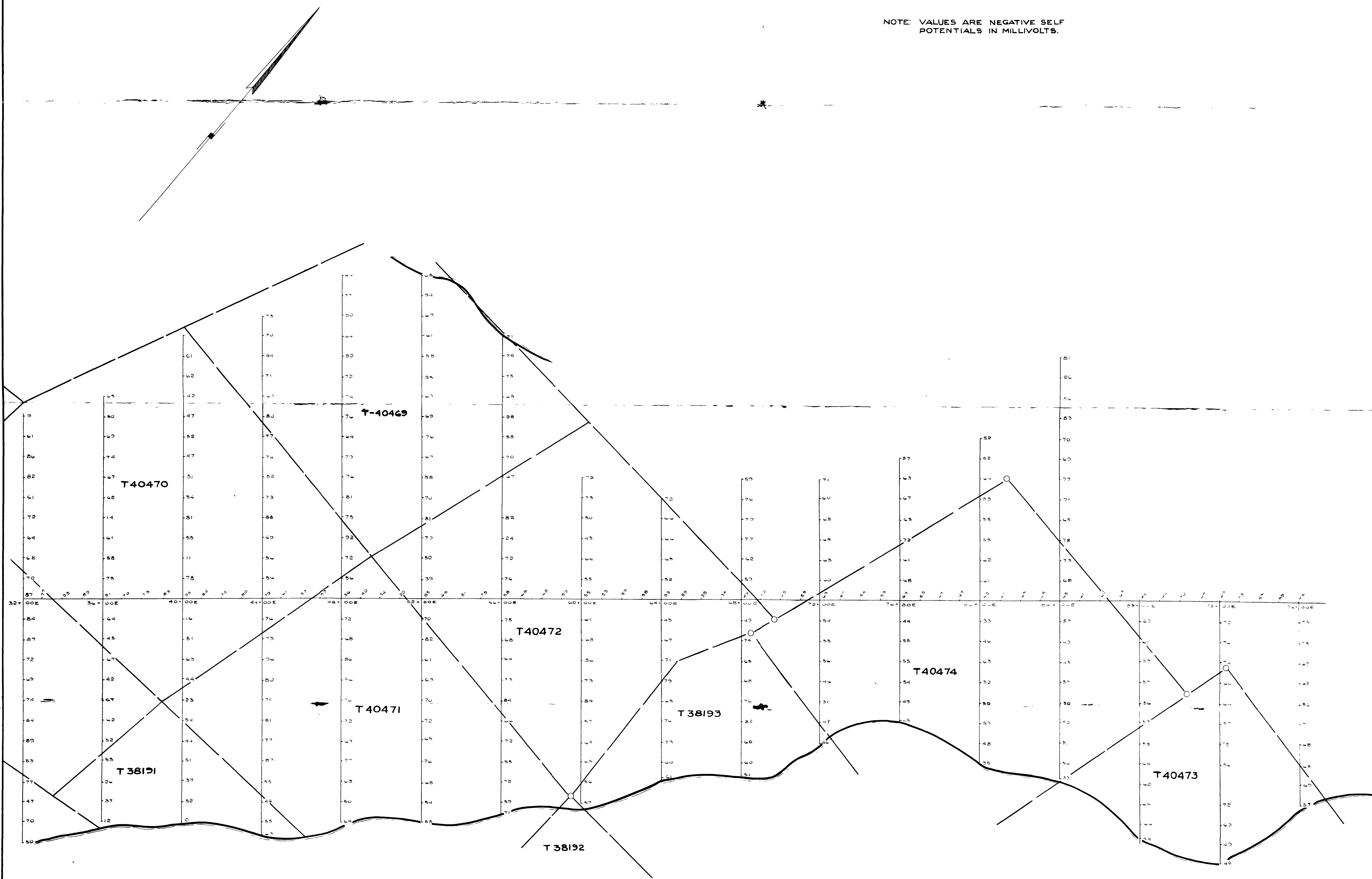
SELF-POTENTIAL SURVEY
 PART OF
CASSELS LAKE PROPERTY
 CASSELS TWP. ONT.
 FOR
GEO-SCIENTIFIC PROSPECTORS LIMITED
 BY
GEOPHYSICAL ENGINEERING & SURVEYS LTD.



LOCATION MAP
 SCALE 1 INCH = 4 MILES



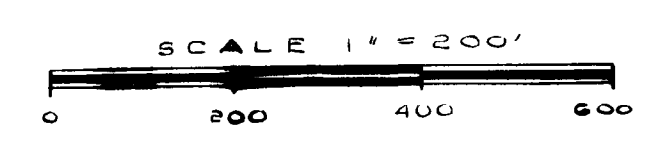
NOTE: VALUES ARE NEGATIVE SELF POTENTIALS IN MILLIVOLTS.



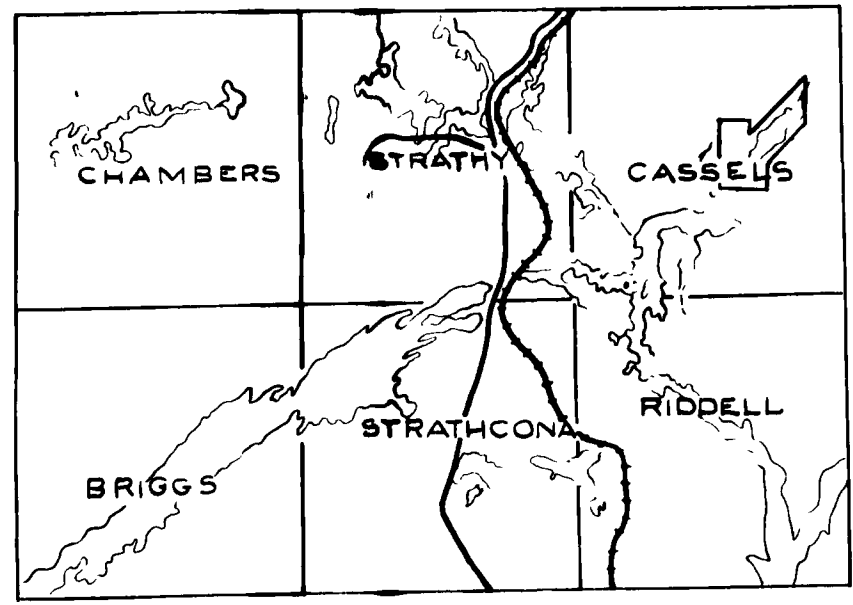
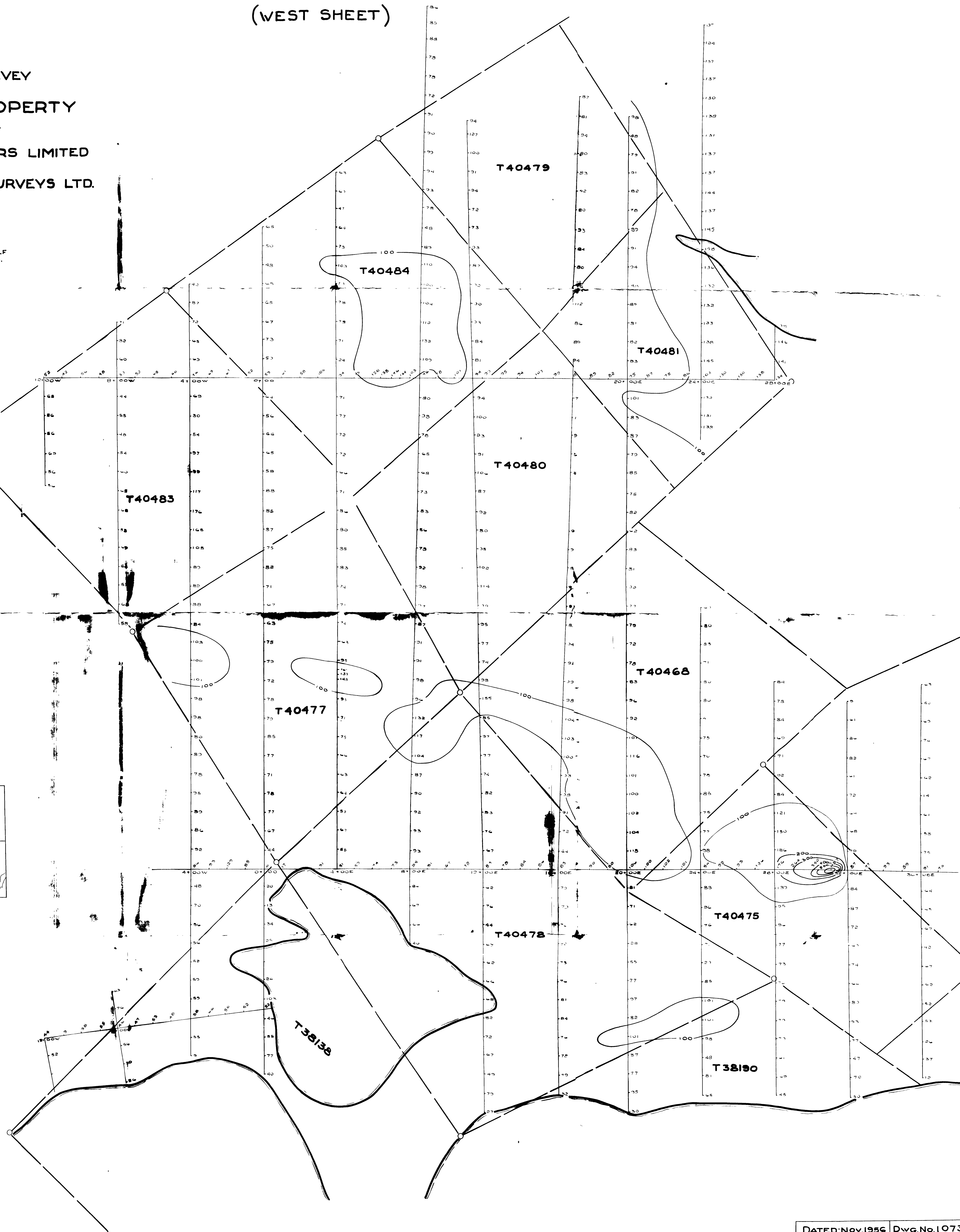
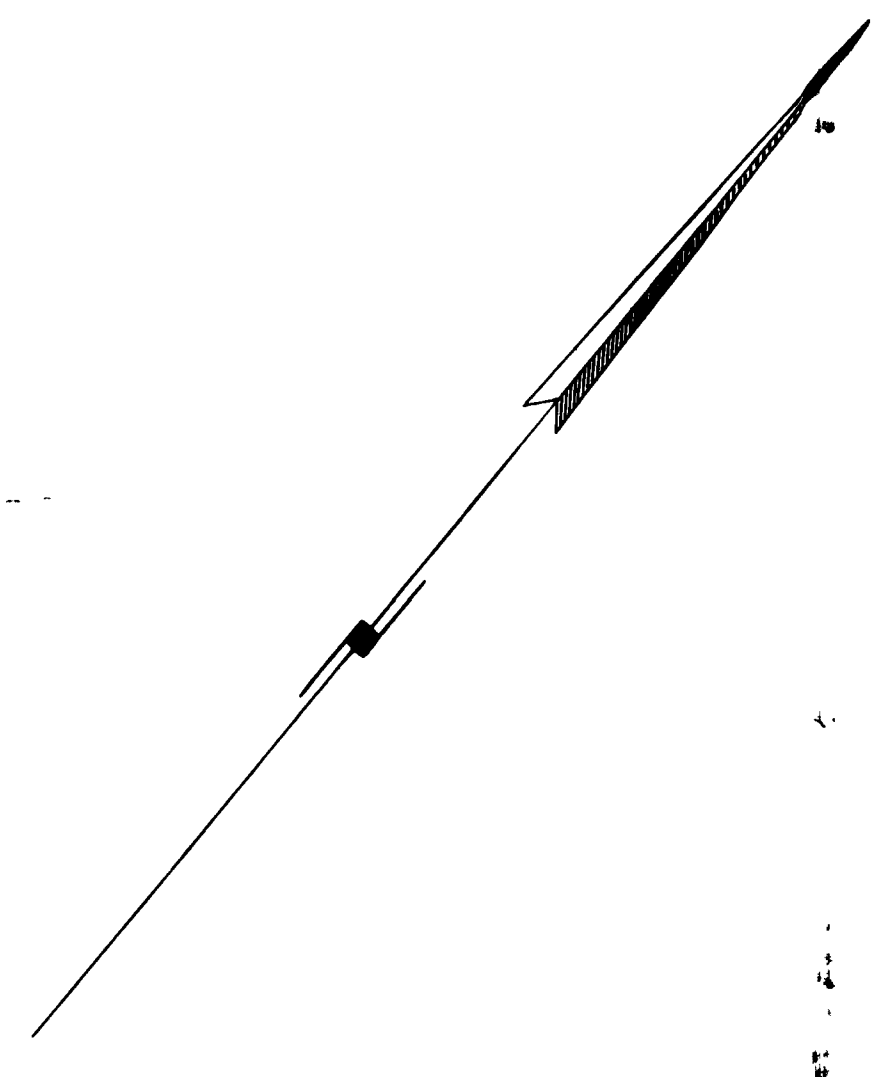
(EAST SHEET)

(WEST SHEET)

SELF-POTENTIAL SURVEY
PART OF
CASSELS LAKE PROPERTY
CASSELS TWP. ONT.
FOR
GEO-SCIENTIFIC PROSPECTORS LIMITED
BY
GEOPHYSICAL ENGINEERING & SURVEYS LTD.



NOTE: VALUES ARE NEGATIVE SELF POTENTIALS IN MILLIVOLTS.



LOCATION MAP
SCALE: 1 INCH = 4 MILES

