

**ASSESSMENT REPORT ON**  
**WILSON LAKE PROJECT PRELIMINARY DRILLING PROGRAM**  
**MILLER LAKE, MANN LAKE AND SAVARD/GAUTHIER GROUP CLAIMS**  
**MILNE, LAW & STRATHCONA TWPS.**  
**G-1668, G-8235 and G-3450**

Prepared For:

**TEMEX RESOURCES CORP.**  
4307 Kerry Road, Unit 100  
Burlington, Ontario  
L7L 1V8



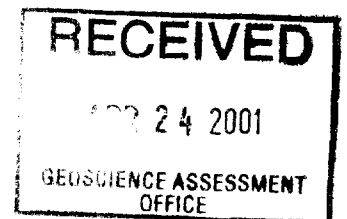
31M04SE2008 2.21077 RIDDELL

010

Distribution:

April, 2001

2 Copies – Ministry of Northern Development & Mines  
3 Copies - Temex Resources Corp.



## TABLE OF CONTENTS

1.0	INTRODUCTION .....	3
2.0	CLAIM GROUP.....	3
3.0	LOCATION AND ACCESS .....	4
4.0	GEOLOGY.....	4
4.1	Regional Geology.....	4
5.0	DRILLING RESULTS .....	5
5.1	Summary of Drilling Completed .....	5
5.2	Summary of Drilled Lithology and Mineralogy.....	5
5.2.1	<i>Diamond Drill Hole (DDH) WLD - 014</i> .....	5
5.2.2	<i>DDH WLD - 30</i> .....	6
5.2.3	<i>DDH WLD - 31</i> .....	6
5.2.4	<i>DDH WLD - 34</i> .....	6
5.2.5	<i>DDH WLD - 39</i> .....	7
5.2.6	<i>DDH WLD - 39B</i> .....	7
6.0	CONCLUSIONS .....	7
7.0	RECOMMENDATIONS.....	8
8.0	STATEMENT OF QUALIFICATIONS .....	9

## LIST OF FIGURES

- Figure 1: Claim Location Map
- Figure 2: Drill Hole Location Map – Savard/Gauthier Group
- Figure 3: Drill Hole Location Map – Mann Lake Claim Group
- Figure 4: Drill Hole Location Map - Miller Lake Claim Group

## LIST OF APPENDICIES

- Appendix A: Reconnaissance Ground Geophysical Survey Results
- Appendix B: Diamond Drill Hole Logs



31M04SE2008 2.21077 RIDDELL

010C

## 1.0 INTRODUCTION

From January 29 to March 24, 2001 a drilling program was completed by Temex Resources Corp. (Temex) on the Miller Lake, Mann Lake and Savard/Gauthier Claim Groups of the Wilson Lake Diamond project (Figure 1). All claims are held in good standing by Temex, of 4307 Kerry Road, Burlington, Ontario, L7L 1V8 (MNDM Client No. 303055). Mr. Duane Parnham of Temex executed the work with the assistance of David Laronde of Meegwich Consultants Inc. (Meegwich). The drilling Contractor was Timmins Metal Corp. of Timmins, Ontario. Logging of drill holes was completed by Mr. Jim Laidlaw between April 15 and April 20, 2001.

A total of six NQ drill holes (WLD – 014, 030, 031, 034, 039 and 039B) were cored for a total of 496.7 m (Figures 2 - 4). The objective of the drilling was to test a broad range of potential kimberlite intrusive targets showing diverse airborne magnetic and electromagnetic geophysical characteristics, with or without down-gradient kimberlitic indicator mineral anomalies being present within previously collected till samples. This program represented an initial drill pass of five of a potential forty drilling targets. It was hoped that the drilling would generate additional information to help prioritize the remaining targets. Prior to drilling reconnaissance ground magnetic and/or EM geophysical surveying was completed to assist in target delineation (Appendix A). That work was completed by Meegwich.

All core samples from the drilling are currently stored at Temex's Field Office in Temagami, Ontario.

## 2.0 CLAIM GROUP

The drilling work was completed on a contiguous block of claims owned by Temex within Milne, Law, Askin, Torrington and Strathcona Townships. In total this contiguous claim block comprises 1,103 claim units or 17,648 hectares. Drilling was completed on three of the claims within the claim groups. These claims were:

<b>Claim Group</b>	<b>Claim Number</b>	<b>Drill Hole</b>
Miller Lake	1230597	WLD - 034
Miller Lake	1230597	WLD – 039
Miller Lake	1230597	WLD – 039B
Mann Lake	1249955	WLD - 031
Mann Lake	1249955	WLD - 030
Savard/Gauthier	1219558	WLD - 014

### 3.0 LOCATION AND ACCESS

The Wilson Lake Project property is located south of the town of Temagami by about 10 km. Temagami is located about 100 km north of the City of North Bay which in turn is about 450 km north of the City of Toronto. The claim groups extends southward by about 18 km from about Lowell and Wagkich Lakes in the north, to Hangstone, Jumping Caribou and Tent Lakes in the south. Highway 11 traverses the north and east portions of the claim groups. The drilling locations were reached via pre-existing forestry roads and/or trails off of the Highway and/or Wilson Lake Road and Lowell Lake Road.

### 4.0 GEOLOGY

The following sections provide a brief description of regional and local lithology present within the drilling area.

#### 4.1 Regional Geology

The following description of the regional geology was obtained from a Report on Airborne Geophysical Target Field Evaluation prepared for Temex by Interbon. The Report is entitled:

- *Report of Airborne Target field Evaluation, Wilson Lake Property, NTS 31M, Interbon Mineral Exploration & Services, September 1, 2000, Rick G. Bonner (Author)*

*"The Wilson Lake Project is located approximately thirty kilometers to the west of the southern end of Lake Timiskaming. It is positioned on the boundary of the Superior and the Grenville Provinces. More locally the northern portion of the project is within the Cobalt Embayment; a Paleoproterozoic sedimentary basin developed as a continuation of the Archean initiated tectonic events. The southern portion of the project is within the Grenville Tectonic Zone (GTZ), a broad zone characterized by variable fabric development, metamorphism and faulting.*

*Lithologically the property is underlain by a bi-modal sequence of metamorphosed ultramafic to felsic volcanics, metasediments and granitic intrusions of Archean age. These are in turn are unconformably overlain by coarse to fine sediments of the Huronian Supergroup; itself subsequently intruded by the Nipissing Diabase event. Several smaller mafic to intermediate intrusive events resulted in dyke arrays trending north/south and northwest. Rocks exposed to the south of the GTZ comprise gneiss, schist, marble and granites with fabric development ranging from intense to moderate.*

*A major crustal feature, the Lake Timiskaming Structural Zone (TSZ), is known to host kimberlites in the Kirkland Lake and Cobalt areas. Sage (2000) observes that northern Ontario kimberlites occur on a trend of 325°, a trend approximately parallel to the TSZ. It is also observed that kimberlites occur in close proximity to the intersections of property scale features, such as contacts and lineaments, and the major northwest trending TSZ structures. Several major northwest trending TSZ structures are observed in magnetic data from the Wilson Lake Project. These structures are oblique to the northwest trending Grenville Front Tectonic Zone crossing the southern portion of the project area."*

## 5.0 DRILLING RESULTS

The following report sections summarize the drilling undertaken and present descriptions of the lithology and mineralization encountered. Diamond Drilling Logs are presented in Appendix B.

### 5.1 Summary of Drilling Completed

As indicated previously five NQ diamond drill holes were cored on the Wilson Lake Project. The coordinates and directional information for each drill hole are summarized below.

#### Summary of Drill Holes

Hole	Depth (m)	Azimuth	Dip	Easting	Northing
WLD - 014	91.4	120°	45°	592149	5207869
WLD - 030	9.1	0°	55°	588254	5195074
WLD - 031	100.6	90°	45°	588184	5194675
WLD - 034	64.0	0°	45°	597234	5189076
WLD - 039	68.6	10°	45°	595945	5188180
WLD - 039B	163.0	18°	45°	595945	5188180

(UTM NAD 27, Zone 17)

The total footage drilled was 496.7 m

### 5.2 Summary of Drilled Lithology and Mineralogy

#### 5.2.1 Diamond Drill Hole (DDH) WLD - 014

DDH WLD - 014 was drilled in order to test the subsurface kimberlitic potential of a low to moderate priority airborne geophysical anomaly characterized by a circular, medium frequency EM response of  $Q = 75$  ppm. The ground geophysical magnetic response was a magnetic low flanked by surrounding magnetic highs. The target was approximately 75

m in diameter and was located in a small swamp and adjacent to a strong northeast to southwest trending structural lineament. The target was also up ice from a kimberlitic indicator mineral (KIM) till sample anomaly comprised of over 750 KIM grains including two subcalcic G10 garnets, and ilmenites with pervoskovite rinds. A target was not intersected down-hole. The magnetic low was interpreted to be pebbly to cobbly metasediments of the Gowganda sediments. The magnetic highs flanking the low remain unexplained as does the high KIM till sample anomaly.

### **5.2.2 DDH WLD - 30**

DDH WLD - 030 was drilled in order to test the subsurface kimberlitic potential of a moderate to high priority airborne geophysical anomaly characterized by a circular, medium frequency (Q = 35 ppm) electromagnetic anomaly coincident with a magnetic high (125 nT). The ground geophysical magnetic response was a magnetic high. The target was approximately 95 m in diameter and was located in a cedar bog. The target was located with a KIM dispersion train with 61 KIMs being present in a down-ice till sample, including 36 pyroxenitic garnets. An economic target was not encountered in the drill hole. The target is interpreted to represent a small diorite intrusive body probably related to a larger parent intrusive body which is nearby.

### **5.2.3 DDH WLD - 31**

DDH WLD - 31 was drilled in order to test the subsurface kimberlitic potential of a moderate priority airborne geophysical anomaly characterized by a circular, medium frequency (Q = 75 ppm) electromagnetic anomaly with no magnetic response. The target was approximately 100 m x 70 m in diameter and was located in a chico swamp. The target was located with a KIM dispersion train with 125 KIMs being present in a down-ice till sample, including 64 pyroxenitic garnets. An economic target was not encountered in the drill hole. The target is interpreted to represent a granodiorite intrusive possibly related to a nearby larger parent intrusive body.

### **5.2.4 DDH WLD - 34**

DDH WLD - 34 was drilled in order to test the subsurface kimberlitic potential of a moderate priority airborne geophysical anomaly characterized by a circular, medium frequency (Q = 120 ppm) electromagnetic anomaly with a coincident magnetic high (65 nT) response. The target was approximately 65 m in diameter and was located in a small, circular lake. The target was located up-ice of anomalous KIMs within till samples including containing, but not limited to, forsteritic olivines and pyroxenitic garnets.

### **5.2.5 DDH WLD - 39**

DDH WLD – 39 was drilled in order to test the subsurface kimberlitic potential of a moderate priority airborne geophysical anomaly characterized by a circular, medium frequency (Q = 50 ppm) electromagnetic anomaly with a coincident magnetic high (50 nT) response. The target was approximately 120 x 80 m in diameter and was located in a small lake. The drill hole was abandoned after 68.6 m as it was determined that the azimuth and dip of the hole were not sufficient to adequately access the target.

### **5.2.6 DDH WLD – 39B**

DDH WLD – 39B was drilled at the same location of WLD – 39 and was intended to test the same geophysical anomaly.

## **6.0 CONCLUSIONS**

Previous till sampling results (KIM dispersion trains, G10 subcalcic garnets, pervoskovite rinds and kimberlite fragments) and airborne geophysics has indicated that the Wilson lake Project area is highly prospective to find kimberlite. This drilling program was completed in order to assess the characteristics of a variety of geophysical anomalies with and/or without associated KIMs in down-ice till samples. Drill target selection was weighted more in favour of geophysical, structural and topographic information rather than KIM till sample data, although anomalous KIM samples were a pre-requisite for the target selection. The intent was to determine assist in discriminating what target signatures might be most prospective on the remainder of the Wilson Lake property.

The drilling did not intersect kimberlite. Mafic to ultramafic intrusive bodies were intersected on the Miller Lake Claim Group. Granitic intrusions, probably related to a much larger granitic batholith to the west of the drilling locations were drilled within the Mann Lake Claim Group and sediments were drilled within a magnetic low within the Savard/Gauthier Claim Group. These findings suggest that future target selection should consider till sampling data to a greater degree than was considered during this program. Further, more till sampling should be completed over favourable targets rather than less

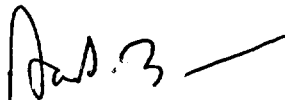
## 7.0 RECOMMENDATIONS

Additional drilling is warranted on the Wilson Lake Project. Prior to selecting targets the following is recommended:

- additional till sampling should be completed down-ice of favourable geophysical anomalies;
- additional till sampling should be completed to further delineate the known existing KIM mineral dispersion trains;
- consideration should be given to completing stream sediment KIM sampling. This recommendation is contingent upon the results of an Ontario Geological Survey Open File Report regarding the same through the Wilson Lake Project area which is scheduled to be released on April 18, 2001;
- the geophysical data should be re-evaluated to further assess the previous priority selections made; and
- magnetic susceptibility readings should be obtained from existing drill core samples and country rocks to assist in future geophysical interpretations.

Respectfully Submitted,

**TEMEX RESOURCES CORP.**



Dan P. Bunner, M.Sc., C.E.T.  
Geologist



## 8.0 STATEMENT OF QUALIFICATIONS

I Dan P. Bunner of Oakville, Ontario hereby certify that:

1. I hold a Master of Science Degree in Geology from Carleton University, Ottawa, Ontario, obtained in February 1989.
2. I have been practicing my profession since 1979 in Newfoundland, Nova Scotia, Quebec, Ontario, Manitoba and the Northwest Territories.
3. I am currently employed as a Geologist/Project Manager for Golder Associates Ltd. and am also currently Senior Geologist of Exploration for Temex Resources Ltd. and as of the date of preparing this report held shares in the company.
4. I am a Registered Professional Geoscientist (P. Geo.) in the Association of Professional Engineers and Geoscientists of the Province of British Columbia.
5. I am a Certified Engineering Technologist (C.E.T.) in the Ontario Association of Certified Engineering Technicians and Technologists.
6. I have based conclusions and recommendations contained in this report on knowledge of the area, my previous experience and on the results of the drilling conducted on the property during 2001.
- 7) I currently reside at 501 Orchard Drive, Oakville, Ontario, L6K 1N9.

Dated this April 20, 2001  
in Mississauga, Ontario

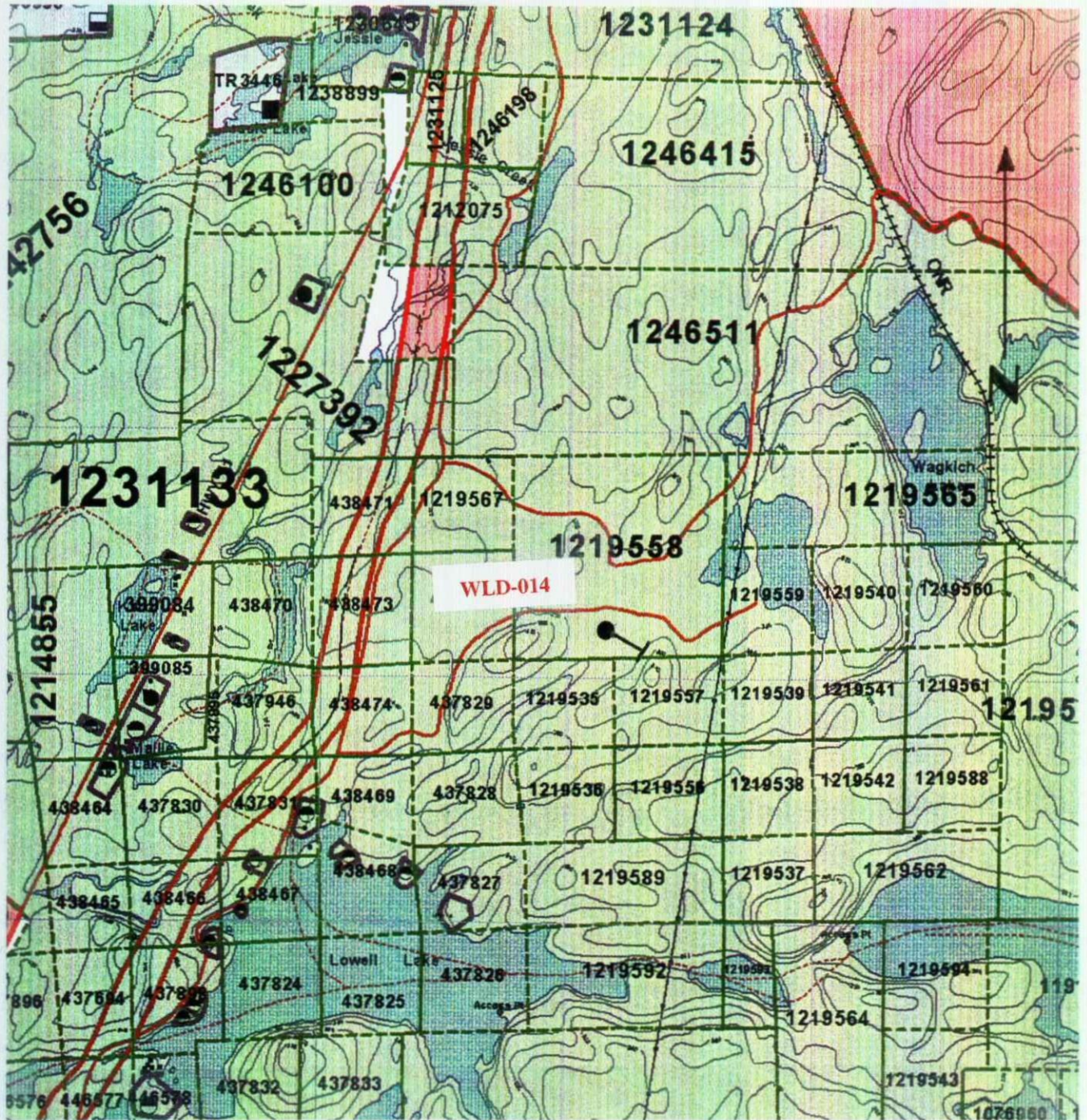


---

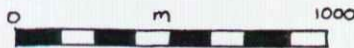
Dan P. Bunner

DRILL HOLE LOCATION MAP  
SAVARD/GAUTHIER CLAIM GROUP  
WLD-014

FIGURE 2



2-21077

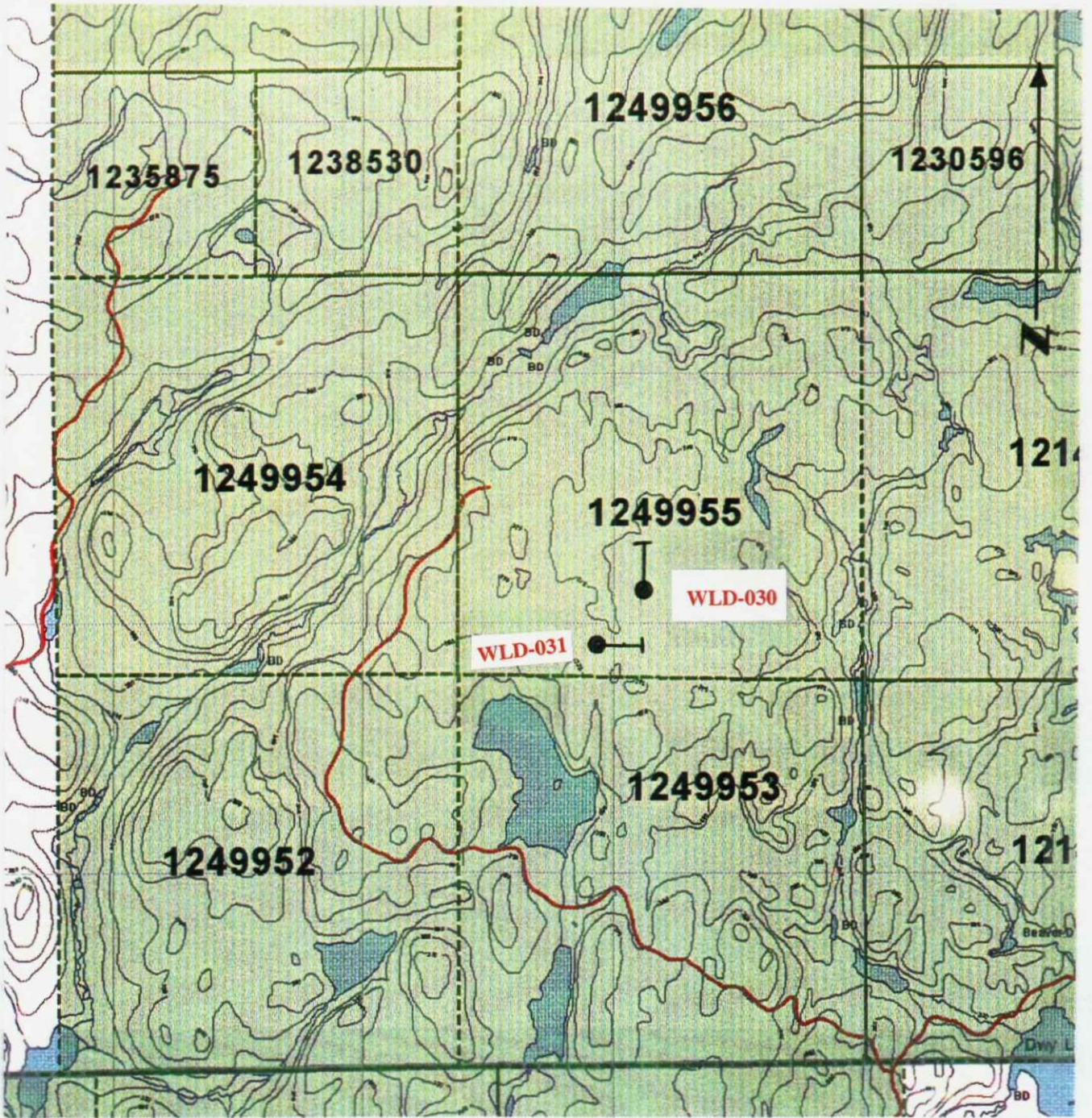


Date \_\_\_\_\_  
Project \_\_\_\_\_

Drawn \_\_\_\_\_  
Chkd. \_\_\_\_\_

DRILL HOLE LOCATION MAP  
MANN LAKE CLAIM GROUP  
WLD-030 AND WLD-031

FIGURE 3



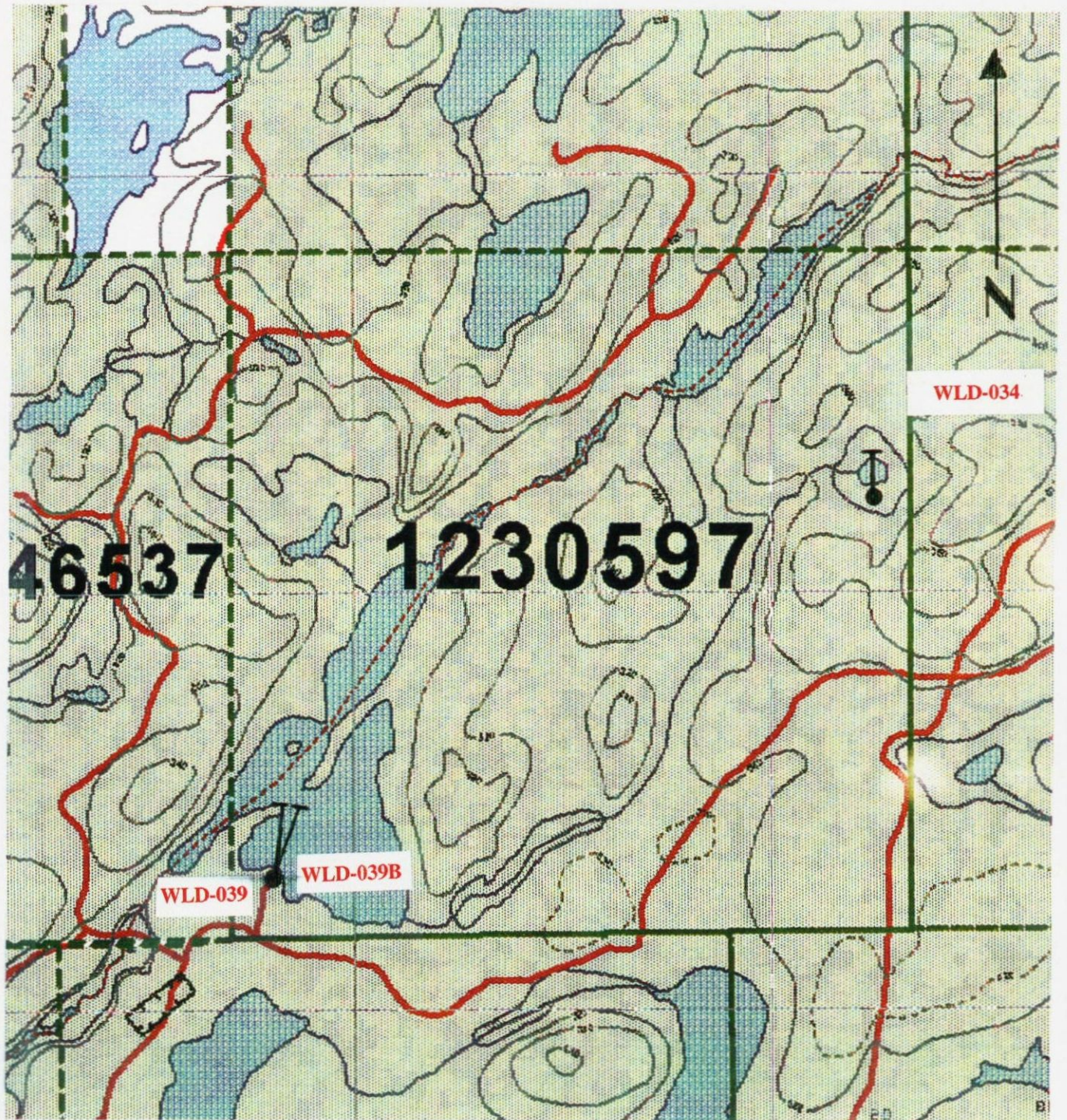
2.21077

Date .....  
Project .....

Drawn .....  
Chkd .....

DRILL HOLE LOCATION MAP  
MILLER LAKE CLAIM GROUP  
WLD-034, WLD-039 AND WLD-039B

FIGURE 4



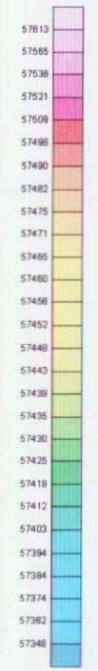
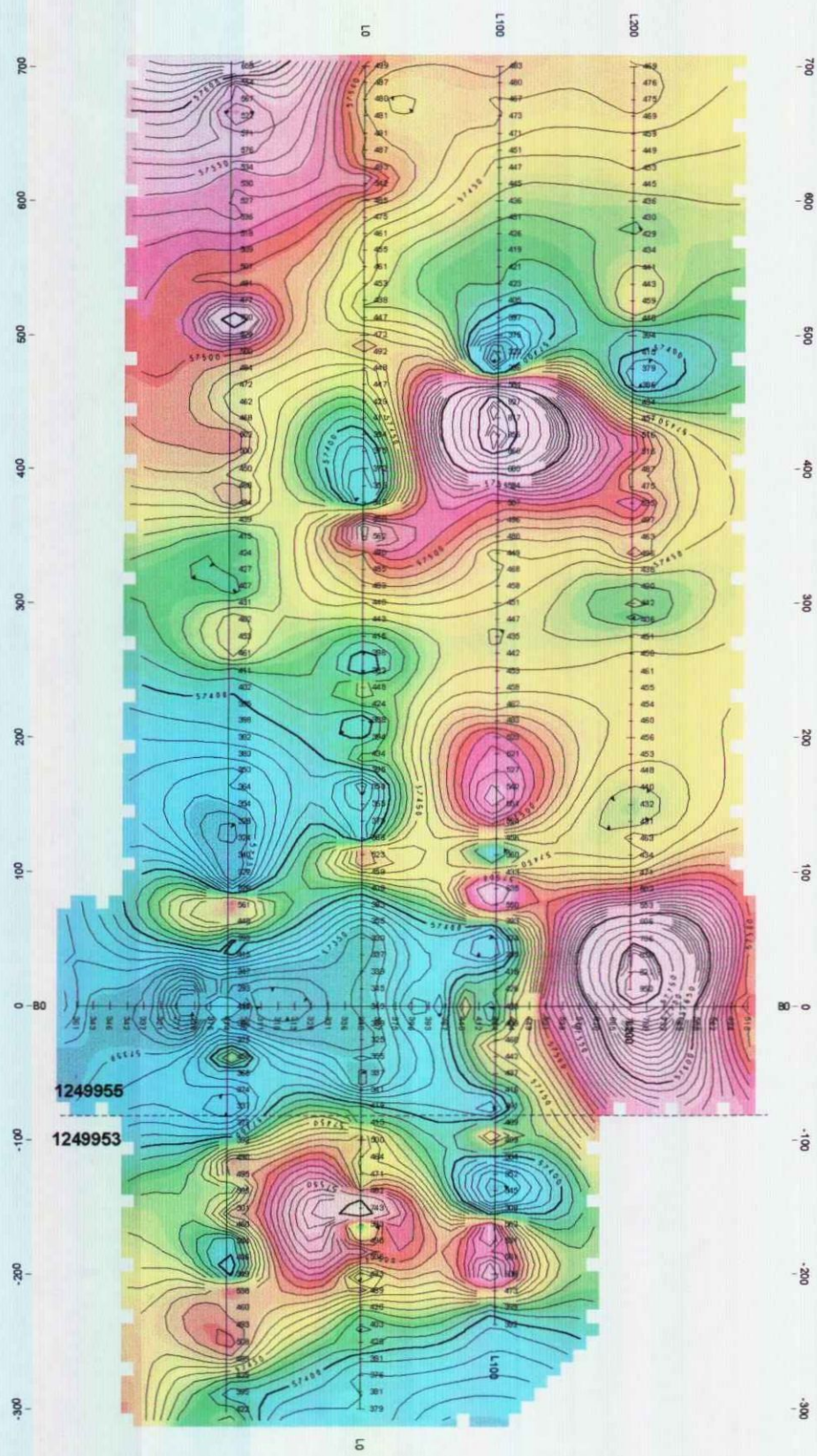
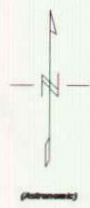
2-21077

Date \_\_\_\_\_  
Project \_\_\_\_\_

Drawn \_\_\_\_\_  
Chkd. \_\_\_\_\_

**APPENDIX A**

**RECONNAISSANCE GROUND GEOPHYSICAL SURVEYING**

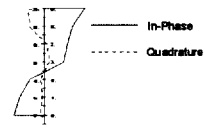
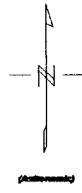
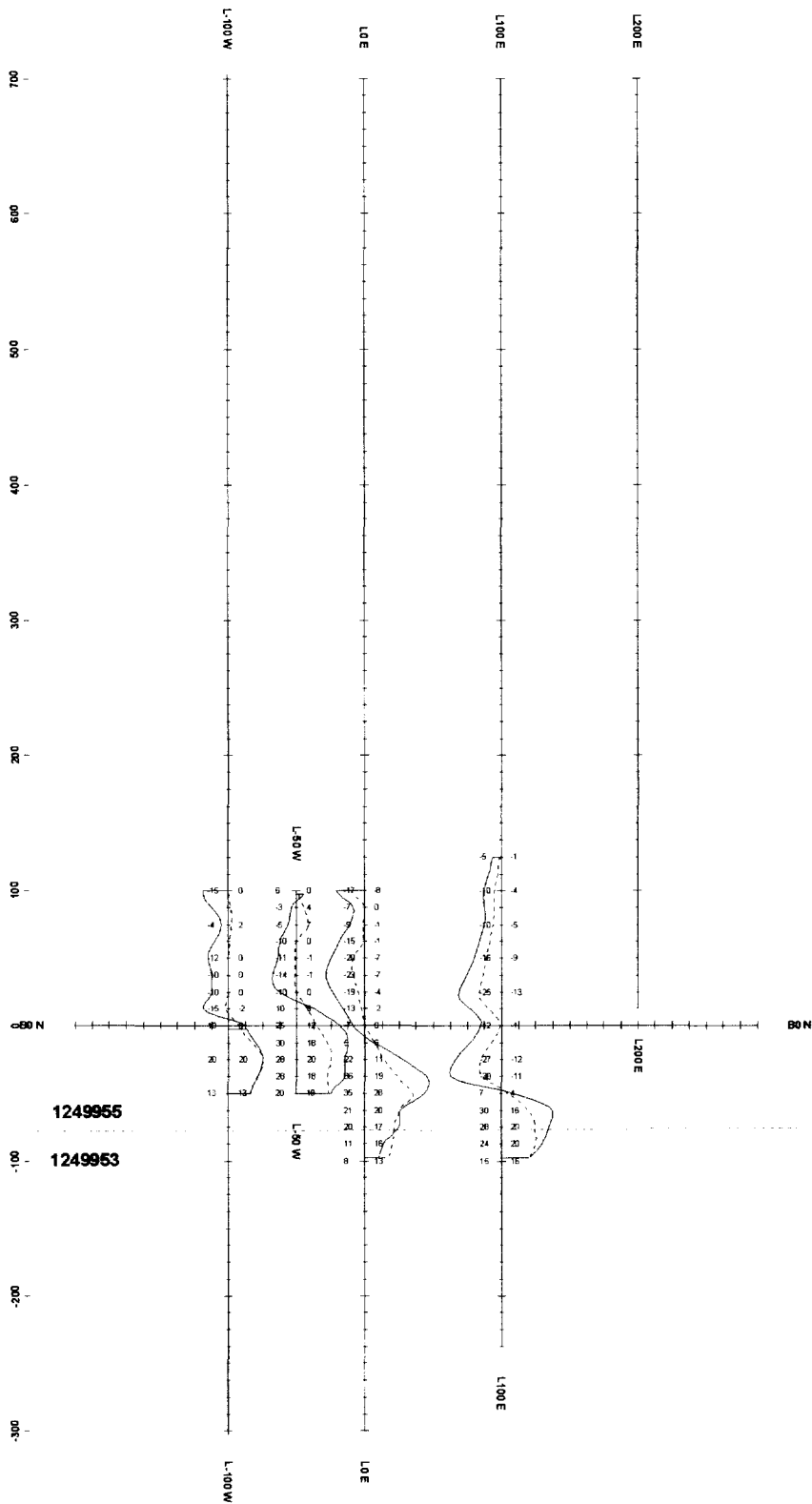


57000 subtracted from all readings



**Instruments:**  
GEM Systems G530-19 Magnetometer Serial #38479  
Scintrex GDA Omni IV Base Station Serial #23223  
Geonics EM-16 VLF Receiver - Serial #10285 - NAA 24.0 Mhz Cutler, Maine

<b>Temex Resources Corp.</b>		
<b>WLD - 030 &amp; 031</b>		
<b>Wilson Lake Project</b>		
<b>Law Township, Ontario</b>		
<b>Sudbury Mining Division</b>		
<b>Total Field Magnetics - Contours</b>		
<b>Reconnaissance Geophysics</b>		
<b>Data Processing and Interpretation by:</b> Meegwich Consultants Inc.	<b>Scale 1:2500</b> February 2001	<b>NTS 31 M4</b> Survey by: D. Laronde

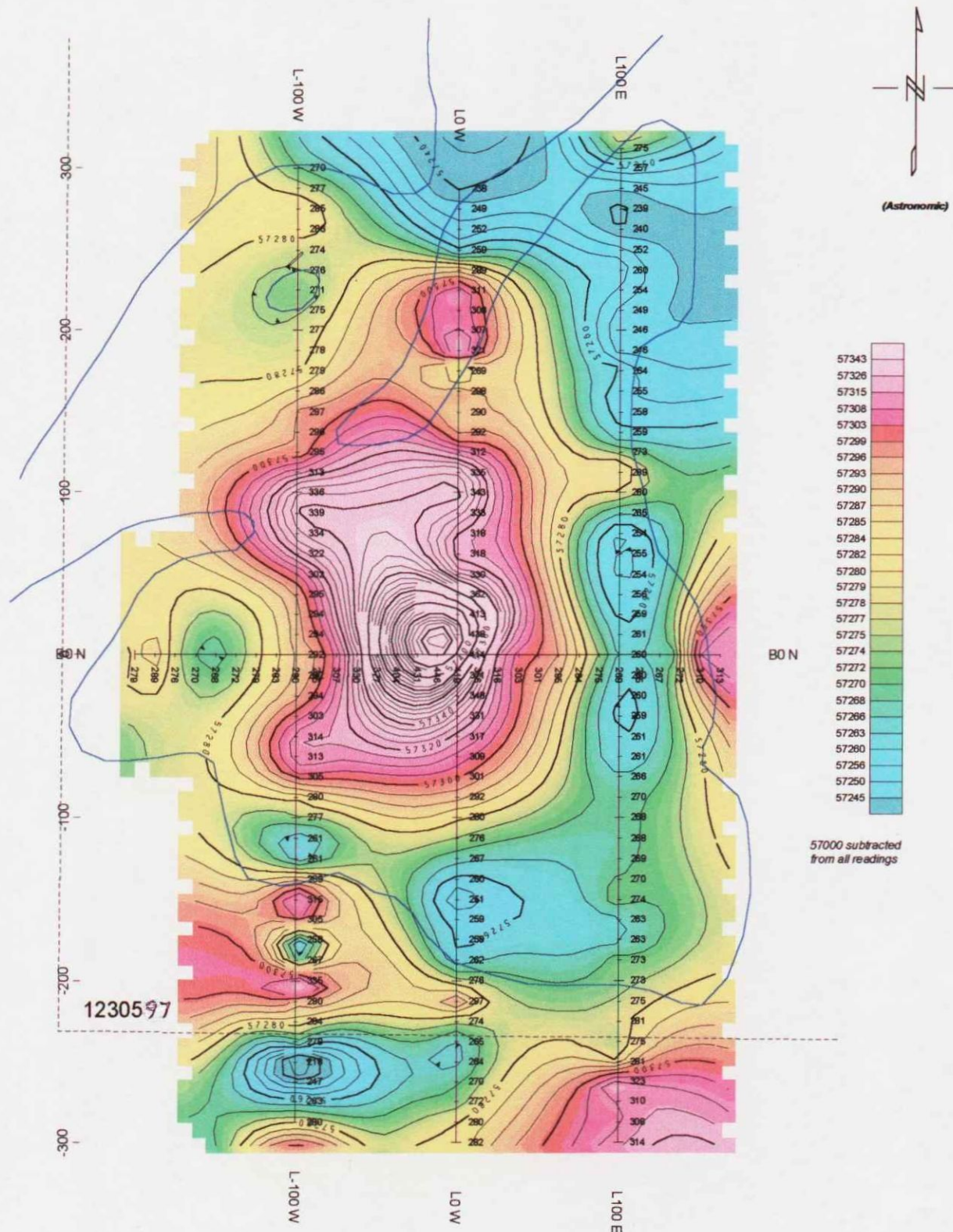


Profile Scale: 1 cm = 20%



Instruments:  
 Geis Systems GDS-19 Magnetometer Serial #28479  
 Sowerb GDA Omni IV Base Station Serial #226225  
 Geometrics EM-16 VLF Receiver - Serial #10283 - MAA 24.0 MHz Cable, Maine

<b>Terrex Resources Corp.</b>		
<b>WLD - 030 &amp; 031</b>		
<b>Wilson Lake Project</b>		
<b>Law Township, Ontario</b>		
<b>Sudbury Mining Division</b>		
<b>VLF - EM Survey</b>		
<b>Reconnaissance Geophysics</b>		
Date Processing and Interpretation by: Mirogwich Consultants Inc.	Scale 1:2500 February 2001	NTS 31 884 Survey No. D. Larocde



Instruments:  
 GEM Systems GSM-19 Magnetometer Serial #58479  
 Scintrex EDA Omni IV Base Station Serial #228225

<b>Temex Resources Corp.</b>		
<b>WLD - 039</b>		
<b>Wilson Lake Project</b>		
Milne Township, Ontario		
Sudbury Mining Division		
<b>Total Field Magnetics - Contours</b>		
<b>Reconnaissance Geophysics</b>		
Data Processing and Interpretation by:	Scale 1:2500	NTS 31 M/4
Meegwich Consultants Inc.	January 2001	Survey by: D. Laronde



**APPENDIX B**  
**DRILL HOLE LOGS**



Ministry of  
Northern Development  
and Mines

Ministère du  
Développement du Nord  
et des Mines

**Diamond Journal de  
Drilling forage au  
Log forage au  
diamant**

*@ Jim Barclaw  
April 15-01*

Complete this form and  
related sketch in duplicate.  
Remplir en deux exemplaires la  
présente formule et le croquis annexé

Fill in on every page  
Remplir ces cases à  
chaque page

Hole No.  
Forage n°  
Page No.  
Page n°  
WLD014 1/4

Drilling Company Compagnie de forage 705-268-7659 Timmins ON P4N7C2	Collar Elevation Élévation du collier 11mmms Metal Co. p. 1340 Delnick Rd. Timmins ON P4N7C2	Bearing of hole from true North/Position du forage par rapport au nord vrai 120°	Total Footage Avancement total du forage 300'	Dip of Hole at Inclinaison du forage au Collar/collier 45	Address/Location where core stored Adresse/endroit où la carotte est stockée Temex Res. Corp Field Office North Temagami ON	Map Reference No. N° de référence sur la carte G-3450	Claim No. N° de concession minière 1219558
Date Hole Started Date de commencement du forage March 20-01	Date Completed Date d'achèvement March 24-01	Date Logged Date d'inscription au journal April 15 01	Logged by Inscrit par C. Jim Barclaw	Submitted by (Signature) Déposé par (signature) Apr 12, 2001 [Signature]	Property Name Nom de la propriété Wilson Lake Project	Location (Twp, Lot, Con. or Lat. and Long.) Emplacement (canton, lot, concession, ou latitude et longitude) Strathcona Twp.	
Exploration Co., Owner or Optionee Compagnie d'exploration, propriétaire ou titulaire d'option Temex Res. Corp							

Footage/Avancement		Rock Type Type de roche	Description (Colour, grain size, texture, minerals, alteration, etc.) Description (Couleur, granulométrie, texture, minéraux, transformation, etc.)	Planar Features Angle/angle des caractéristiques planes	Core Specimen Footage / Longueur en pieds des carottes prélevées	Your Sample No N° d'échantillon du prospecteur	Sample Footage/Niveau de pré- lèvement de l'échantillon (en pieds)	Sample Length Longueur de l'échantillon	Assays †/Analyses minéralurgiques
From/De	To/À						From/De	To/À	
0	11.0	Overburden	Till						
11.0	300.0		Gowganda Formation						
11.0	158.2	pebble-cobble sandstone	• greenish-gray matrix supported argillaceous sandstone with numerous sub-angular to rounded polymictic clasts (quartz, diorite, granite, shale and siltstone) • clast range in size 2mm to 150mm • trace pyrite throughout core length • observed: fractures 15.8 to 17.1 30.7 to 30.9 123.0 to 123.4 124.5 to 124.9 • observed: veining 29.6 to 29.8 41.45 to 41.50	10° 10° 15° 25°					
			5ma to 2mm wide carbonate hematite vein pyrite in wall rock and along fracture faces. Boudinage like structure, maximum 1cm thick	50° 50°					

0204 (03/91)

\* For features such as foliation, bedding, schistosity, measured from the long axis of the core.

\* Exemples de caractéristiques : foliation, schistosité, stratification. L'angle est mesuré par rapport à l'axe longitudinal de la carotte.

† Additional credit available. See Assessment Work Regulation.

† Des crédits supplémentaires sont offerts. Consulter les règlements relatifs aux travaux d'évaluation

Nota : Dans cette formule, lorsqu'il désigne des personnes, le masculin est utilisé au sens neutre.

Continued



Ministry of  
Northern Development  
and Mines

Ministère du  
Développement du Nord  
et des Mines

**Diamond Journal de  
Drilling forage au  
Log diamant**

*Jim Laidlaw*  
April 15-01

Complete this form and  
related sketch in duplicate.  
Remplir en deux exemplaires la  
présente formule et le croquis annexé

Fill in on every page  
Remplir ces cases à  
chaque page

Hole No. Forage n°	Page No. Page n°
WLD014	2/2

Drilling Company Compagnie de forage 7051 268 <sup>th</sup> 7659	Timmins Metal Corp. 1340 Delisle Road Timmins ON P4N 7C2	Collar Elevation Élévation du collier	Bearing of hole from true North/Position du forage par rapport au nord vrai	Total Footage Avancement total du forage	Dip of Hole at Inclinaison du forage au	Address/Location where core stored Adresse/endroit où la carotte est stockée  Temex Res. Corp. Field Office North Temagami ON	Map Reference No. N° de référence sur la carte 5-3450	Claim No. N° de concession minière 1219558	
Date Hole Started Date de commencement du forage	Date Completed Date d'achèvement	Date Logged Date d'inscription au journal	Logged by Inscrit par	Collar/collier	Location (Twp, Lot, Con. or Lat. and Long.) Emplacement (canton, lot, concession, ou latitude et longitude)  Strathcona Twp.				
March 20-01	March 24-01	April 15-01	C. Jim Laidlaw	95					
Exploration Co., Owner or Optionee Compagnie d'exploration, propriétaire ou titulaire d'option	Date Submitted Date de dépôt	Submitted by (Signature) Déposé par (signature)							
Temex Res. Corp	April 23, 2001	RMB							
						Property Name Nom de la propriété		Wilson Lake Project	

Footage/Avancement		Rock Type Type de roche	Description (Colour, grain size, texture, minerals, alteration, etc.) Description (Couleur, granulométrie, texture, minéraux, transformation, etc.)	Placer Feature Angle/Angle des caractéristiques plans	Core Specimen Footage / Longueur en pieds des carottes prélevées	Your Sample No. N° d'échantillon du prospecteur	Sample Footage/Niveau de pré- lèvement de l'échantillon (en pieds)	Sample Length Longueur de l'échantillon	Assays / Analyses minéralurgiques
From/De	To/À						From/De	To/À	
11.0	158.2	continued	Observed blocky fracture zone - severely broken rock material epidote-like green throughout section 93.2 to 94.4	10°					
			Observed blocky fracture zone - severely broken, chloritic, appears moderately weathered - limonitic coatings along broken and fracture faces 103.0 to 110.0	10° 50°					
158.2	179.3	pebble-cobble sandstone	Increase in pebble-cobble content, greenish-grey, clasts polymictic, sub-rounded to rounded, matrix supported						
179.3	186.1	pebble-cobble conglomerate	Layer of polymictic, rounded to sub-rounded pebbles and cobbles, clast supported						

0204 (03/91)

\*For features such as foliation, bedding, schistosity, measured from the long axis of the core.

\*Exemples de caractéristiques : foliation, schistosité, stratification. L'angle est mesuré par rapport à l'axe longitudinal de la carotte.

† Additional credit available. See Assessment Work Regulation.

† Des crédits supplémentaires sont offerts. Consulter les règlements relatifs aux travaux d'évaluation  
Nota : Dans cette formule, lorsqu'il désigne des personnes, le masculin est utilisé au sens neutre.

*Continued*



Ministry of  
Northern Development  
and Mines

Ministère du  
Développement du Nord  
et des Mines

**Diamond Drilling Log** **Journal de forage au diamant**

*C. Sim Laudlaw*  
April 15-01

Complete this form and related sketch in duplicate.  
Remplir en deux exemplaires la présente formule et le croquis annexé

Fill in on every page  
Remplir ces cases à chaque page

Hole No. Forage n°  
WLD014  
Page No. Page n°  
3/5

Drilling Company Compagnie de forage 705-268 7659	Timmins Metal Corp 1340 Delta Road Timmins ON P7N 7C2	Collar Elevation Élévation du collier	Bearing of hole from true North/Position du forage par rapport au nord vrai 120°	Total Footage Avancement total du forage 300'	Dip of Hole at Inclinaison du forage au Collar/collier 45°	Address/Location where core stored Adresse/endroit où la carotte est stockée Temex Res. Corp. Field office North Temagami, Ontario	Map Reference No. N° de référence sur la carte G-3450	Claim No. N° de concession minière 1219558
Date Hole Started Date de commencement du forage March 20-01	Date Completed Date d'achèvement March 24-01	Date Logged Date d'inscription au journal April 15-01	Logged by Inscrit par C. Sim Laudlaw	Date Submitted Date de dépôt April 23, 2001	Submitted by (Signature) Déposé par (signature) <i>D.P.B.</i>	Location (Twp, Lot, Con. or Lat. and Long.) Emplacement (canton, lot, concession, ou latitude et longitude) Strathcona Twp		Property Name Nom de la propriété Wilson Lake Project
Exploration Co., Owner or Optionee Compagnie d'exploration, propriétaire ou titulaire d'option Temex Res. Corp.								

Footage/Avancement		Rock Type Type de roche	Description (Colour, grain size, texture, minerals, alteration, etc.) Description (Couleur, granulométrie, texture, minéraux, transformation, etc.)	Plane Features Angle/Angle des caractéristiques planes	Core Specimen Footage / Longueur en pieds des carottes prélevées	Your Sample No. N° d'échantillon du prospecteur	Sample Footage/Niveau de prélèvement de l'échantillon (en pieds) From/De To/À	Sample Length Longueur de l'échantillon	Assays †/Analyses minéralurgiques
186.1	212.4	pebble-cobble sandstone	• Distinct colour change to green-grey. Coarse sandstone matrix with polymictic well rounded pebble clasts, and subrounded cobble conglomerate deformation of matrix. • Pervasive moderate carbonate reaction in narrow healed fractures and throughout matrix. - Contact at 186.1 - .5 cm wuggy Quartz vein at 186.4 - several healed carbonate filled fractures 204.8 to 205.3	65° 65° 25°					
212.4	235.3	pebble sandstone	• Pervasive carbonate in matrix and in earthy hematite coated fractures. • polymictic pebbles well rounded. - Hematite coated fractures 218.0 to 218.9	25°					
235.3	246.7	pebble-cobble conglomerate	Polymictic rounded to subrounded clast supported conglomerate.						

0204 (03/91)

\*For features such as foliation, bedding, schistosity, measured from the long axis of the core.  
\*Exemples de caractéristiques : foliation, schistosité, stratification. L'angle est mesuré par rapport à l'axe longitudinal de la carotte.

† Additional credit available. See Assessment Work Regulation.  
† Des crédits supplémentaires sont offerts. Consulter les règlements relatifs aux travaux d'évaluation  
Nota : Dans cette formule, lorsqu'il désigne des personnes, le masculin est utilisé au sens neutre.

Continued



Ministry of  
Northern Development  
and Mines

Ministère du  
Développement du Nord  
et des Mines

**Diamond Drilling Log** **Journal de forage au diamant**

*C. Simard*  
April 15-01

Complete this form and related sketch in duplicate.  
Remplir en deux exemplaires la présente formule et le croquis annexé

Fill in on every page  
Remplir ces cases à chaque page

Hole No. Forage n°	Page No. Page n°
WLD 014	4/4

Drilling Company Compagnie de forage	Timmins Nickel Corp. 15400 Delwin Rd. Timmins ON P4N 7C2	Collar Elevation Élévation du collier	Bearing of hole from true North Position du forage par rapport au nord vrai	Total Footage Avancement total du forage	Dip of Hole at Collar Inclinaison du forage au Collier	Address/Location where core stored Adresse/endroit où la carotte est stockée	Map Reference No. N° de référence sur la carte	Claim No. N° de concession minière
Date Hole Started Date de commencement du forage	Date Completed Date d'achèvement	Date Logged Date d'inscription au journal	Logged by Inscrit par					
Exploration Co., Owner or Optionee Compagnie d'exploration, propriétaire ou titulaire d'option	Date Submitted Date de dépôt	Submitted by (Signature) Déposé par (signature)						

Temex Res. Corp.  
March 20-01  
March 24-01  
April 15-01  
C. Simard  
April 12, 2001  
R.R.3

Temex Res. Corp.  
Field Office  
North Temagami  
ON

Wilson Lake Project  
Strathcona Twp.  
G-3450  
1219558

Footage/Avancement		Rock Type Type de roche	Description (Colour, grain size, texture, minerals, alteration, etc.) Description (Couleur, granulométrie, texture, minéraux, transformation, etc.)	Planes Features Angle/Angle des caractéristiques planes	Core Specimen Footage / Longueur en pieds des carottes prélevées	Your Sample No. N° d'échantillon du prospecteur	Sample Footage/Niveau de prélèvement de l'échantillon (en pieds)	Sample Length Longueur de l'échantillon	Assests / Analyses minéralurgiques
246.7	281.1	Pebble Sandstone	Reddish-green, polyminetic pebbles rounded to subrounded. earthy hematite filled fractures Carbonate rock matrix, strong carbonate reaction along fractures. - hematite fractures 254.8 to 255.4 - hematite fractures 267.5 to 268.5'	30° 0° 25° 40°					
281.1	300.0	pebble-cobble-boulders sandstone	Polyminetic rounded to sub rounded clasts Carbonate in matrix and in earthy hematite fractures. - hematite fractures	30°					
			EOH @ 300.0 feet						

0204 (03/91)

\* For features such as foliation, bedding, schistosity, measured from the long axis of the core.

\* Exemples de caractéristiques : foliation, schistosité, stratification. L'angle est mesuré par rapport à l'axe longitudinal de la carotte.

† Additional credit available. See Assessment Work Regulation.

† Des crédits supplémentaires sont offerts. Consulter les règlements relatifs aux travaux d'évaluation

Nota : Dans cette formule, lorsqu'il désigne des personnes, le masculin est utilisé au sens neutre.



Ministry of  
Northern Development  
and Mines

Ministère du  
Développement du Nord  
et des Mines

**Diamond Journal de  
Drilling forage au  
Log diamant**

Complete this form and  
related sketch in duplicate.  
Remplir en deux exemplaires la  
présente formule et le croquis annexé

Fill in on every page  
Remplir ces cases à  
chaque page

Hole No. Forage n°	Page No Page n°
WLD-030	1 of 1

Drilling Company Compagnie de forage 75-282 7652	Timmins Nickel Corp. 1340 DeLoraine Road Timmins ON P4N 7C2	Collar Elevation Élévation du collier	Bearing of hole from true North/Position du forage par rapport au nord vrai	Total Footage Avancement total du forage	Dip of Hole at Inclinaison du forage au	Address/Location where core stored Adresse/endroit où la carotte est stockée  Temex Res. Corp. Field Office North Temagami, ON	Map Reference No. N° de référence sur la carte  Plan G-2835	Claim No. N° de concession minière  124 79 55
Date Hole Started Date de commencement du forage	Date Completed Date d'achèvement	Date Logged Date d'inscription au journal	Logged by Inscrit par	Collar/cotier	Location (Twp, Lot, Con. or Lat. and Long.) Emplacement (canton, lot, concession, ou latitude et longitude)			
Exploration Co., Owner or Optionee Compagnie d'exploration, propriétaire ou titulaire d'option	Date Submitted Date de dépôt	Submitted by (Signature) Déposé par (signature)			Property Name Nom de la propriété			

Footage/Avancement		Rock Type Type de roche	Description (Colour, grain size, texture, minerals, alteration, etc.) Description (Couleur, granulométrie, texture, minéraux, transformation, etc.)	Plane Feature Angle/angle des concordances plans	Core Specimen Footage / Longueur en pieds des carottes prélevées	Your Sample No. N° d'échantillon du prospecteur	Sample Footage/Niveau de pré- lèvement de l'échantillon (en pieds)	Sample Length Longueur de l'échantillon	Assays †/Analyses minéralurgiques
From/De	To/À						From/De	To/À	
0	26.7	Overburden	Till						
26.7	30.0	Diorite	-greenish-gray-black, massive, medium to coarse grained, hypidomorphic textured. -Pyroxene 45% >2mm grain size, subhedral -Plagioclase 45% 2mm to >10mm grain size subhedral -Orthoclase 5% 2mm to >10mm grain size subhedral -Epidote 5% ca. 2mm disseminated anhedral -Quartz trace • Feldspars have rounded crystal faces with pervasive light greenish-tinge  - at 27.35 to 27.50, pyroxene rich band, black, fine-grained euhedral crystals, flow orientated						
			EOH at 30.0 feet						

0204 (03/91)

\* For features such as foliation, bedding, schistosity, measured from the long axis of the core.

\* Exemples de caractéristiques : foliation, schistosité, stratification. L'angle est mesuré par rapport à l'axe longitudinal de la carotte.

† Additional credit available. See Assessment Work Regulation.

† Des crédits supplémentaires sont offerts. Consulter les règlements relatifs aux travaux d'évaluation

Nota : Dans cette formule, lorsqu'il désigne des personnes, le masculin est utilisé au sens neutre.



Ministry of  
Northern Development  
and Mines

Ministère du  
Développement du Nord  
et des Mines

**Diamond Drilling Journal de forage au diamant**

*Jim Lundlan April 16-01  
Timmins ON*

Complete this form and related sketch in duplicate.  
Remplir en deux exemplaires la présente formule et le croquis annexé

Fill in on every page  
Remplir ces cases à chaque page

Hole No. Forage n°	Page No Page n°
WLD-03	117

Drilling Company Compagnie de forage 705-268-7659 Timmins Project Corp 1340 Delink Road Timmins ON P4N 7C2	Collar Elevation Élévation du collier	Bearing of hole from true North/Position du forage par rapport au nord vrai 90°	Total Footage Avancement total du forage 329.95	Dip of Hole at Inclinaison du forage au Collar/collier 75	Address/Location where core stored Adresse/endroit où la carotte est stockée Temex Res Corp Field Office North Timmins ON	Map Reference No. N° de référence sur la carte Plan G-2E35	Claim No. N° de concession minière 1249955
Date Hole Started Date de commencement du forage March 09-2001	Date Completed Date d'achèvement March 13-2001	Date Logged Date d'inscription au journal April 16-01	Logged by Inscrit par C. Jim Lundlan	FI/PI		Location (Twp, Lot, Con. or Lat. and Long.) Emplacement (canton, lot, concession, ou latitude et longitude) Law Twp.	
Exploration Co., Owner or Optionee Compagnie d'exploration, propriétaire ou titulaire d'option Temex Res. Corp.		Date Submitted Date de dépôt April 23, 2001	Submitted by (Signature) Déposé par (signature) DJS	FI/PI		Property Name Nom de la propriété Wilson Lake Project	

Footage/Avancement		Rock Type Type de roche	Description (Colour, grain size, texture, minerals, alteration, etc.) Description (Couleur, granulométrie, texture, minéraux, transformation, etc.)	Plane Feature Angle / Angle des caractéristiques planes	Core Specimen Footage / Longueur en pieds des carottes prélevées	Your Sample No. N° d'échantillon du prospecteur	Sample Footage/Niveau de prélèvement de l'échantillon (en pieds) From/De To/À	Sample Length Longueur de l'échantillon	Assays † / Analyses minéralurgiques
0	51.0	Coverburden	Till						
51.0	74.2	Gneiss/diorite	Dark grey to black with mottled greenish-white spotted appearance. Medium to coarse grained, hypidiomorphic textured, massive - hornblende, pink and white feldspars and quartz. Fractures with epidote Trace blebby pyrite asso. w/ epidote (fractures) 60.85 to 63.30 - fracture w/ pervasive hematite wash and epidote filled (fractures) (breccialike) - minor vigorous carbonate reaction - Fibrous orientation - Contact @ 14.20	5° 60 to 90° 40°					
74.2	95.5	Altered Gneiss/diorite breccia zone	Pink fine to medium-grained porphyroblastic textured, siliceous feldspathic breccia - numerous fractures invaded by epidote-chlorite and black chlorite fragments in feldspathic material - Contact @ 95.5 well defined Planar Contact	20.30 to 60°					Trace Pyrite 15°

0204 (03/91)

\* For features such as foliation, bedding, schistosity, measured from the long axis of the core.

\* Exemples de caractéristiques : foliation, schistosité, stratification. L'angle est mesuré par rapport à l'axe longitudinal de la carotte.

† Additional credit available. See Assessment Work Regulation.

† Des crédits supplémentaires sont offerts. Consulter les règlements relatifs aux travaux d'évaluation.

Note : Dans cette formule, lorsqu'il désigne des personnes, le masculin est utilisé au sens neutre.



Ministry of  
Northern Development  
and Mines

Ministère du  
Développement du Nord  
et des Mines

**Diamond Drilling Log**

**Journal de forage au diamant**

*John Lundholm April 16/01  
Temex Res. Corp.*

Complete this form and related sketch in duplicate.  
Remplir en deux exemplaires la présente formule et le croquis annexé

Fill in on every page  
Remplir ces cases à chaque page

Hole No. Forage n°	Page No. Page n°
WLD-031	2/7

Drilling Company Compagnie de forage 705-268-7659 Timmins Metal Corp 1340 Delnick Road Timmins ON P4N 7C2	Collar Elevation Élévation du collier	Bearing of hole from true North/Position du forage par rapport au nord vrai 70°	Total Footage Avancement total du forage 329.95'	Dip of Hole at Inclinasion du forage au Collar/collier 45°	Address/Location where core stored Adresse/endroit où la carotte est stockée Temex Res. Corp Held Office North Timmins ON.	Map Reference No. N° de référence sur la carte 11A5-2835	Claim No. N° de concession minière 1248955
Date Hole Started Date de commencement du forage March 09-2001	Date Completed Date d'achèvement March 13-2001	Date Logged Date d'inscription au journal April 16/01	Logged by Inscrit par C. J. Lundholm	F1/P1		Location (Twp, Lot, Con. or Lat. and Long.) Emplacement (canton, lot, concession, ou latitude et longitude) Low Twp	Property Name Nom de la propriété Lundholm Lake Project
Exploration Co., Owner or Optionee Compagnie d'exploration, propriétaire ou titulaire d'option Temex Res. Corp.	Date Submitted Date de dépôt April 23, 2001	Submitted by (Signature) Déposé par (signature) [Signature]	F1/P1	F1/P1			

Footage/Avancement		Rock Type Type de roche	Description (Colour, grain size, texture, minerals, alteration, etc.) Description (Couleur, granulométrie, texture, minéraux, transformation, etc.)	Placer Feature Angle / Angle des caractéristiques planes	Core Specimen Footage / Longueur en pieds des carottes prélevées	Your Sample No N° d'échantillon du prospecteur	Sample Footage/Niveau de prélèvement de l'échantillon (en pieds) From/De To/A	Sample Length Longueur de l'échantillon	Assays †/Analyses minéralurgiques
95.5	137.6	Granodiorite	Dark grey to black with mottled greenish-white spotted appearance - Medium to coarse-grained hypidiomorphic textured, massive - hornblende, pink and white feldspar, quartz, trace - blebby pyrite and bands of fine to medium-grained idiomorphic textured hornblende, with schlieren wisps of lighter coloured greenish-white to pinkish-white feldspars - flow orientation at 100.2 to 107.0 60 690° - flow orientation at 107.9 to 114.0 40 80 680°						
	126.6 to 135.8		medium to coarse-grained hypidiomorphic textured diorite, hornblende, pink feldspar, quartz - blocky fracturation					20"	
	135.2 - 135.9		epidote filled brown fractures 1/2" wide - trace pyrite.					40	
			Control at 137.60					70°	

0204 (03/91)

\* For features such as foliation, bedding, schistosity, measured from the long axis of the core.

\* Exemples de caractéristiques : foliation, schistosité, stratification. L'angle est mesuré par rapport à l'axe longitudinal de la carotte.

† Additional credit available. See Assessment Work Regulation.

† Des crédits supplémentaires sont offerts. Consulter les règlements relatifs aux travaux d'évaluation.

Nota : Dans cette formule, lorsqu'il désigne des personnes, le masculin est utilisé au sens neutre.





Ministry of  
Northern Development  
and Mines

Ministère du  
Développement du Nord  
et des Mines

**Diamond Drilling Log** **Journal de forage au diamant**

*Jim Lawlaw April 16-01  
Temagami ON*

Complete this form and related sketch in duplicate.  
Remplir en deux exemplaires la présente formule et le croquis annexé

Fill in on every page  
Remplir ces cases à chaque page

Hole No. Forage n° **WLD-031**  
Page No. Page n° **3/7**

Drilling Company Compagnie de forage <i>705. 268. 7659 Timmins Metal Corp.</i>	Collar Elevation Élévation du collier	Bearing of hole from true North/Position du forage par rapport au nord vrai <i>90°</i>	Total Footage Avancement total du forage <i>329.95</i>	Dip of Hole at Inclinaison du forage au Collar/collier <i>45</i>	Address/Location where core stored Adresse/endroit où la carotte est stockée <i>Temex Res. Corp. Field Office North Temagami ON</i>	Map Reference No. N° de référence sur la carte <i>Plan G-2835</i>	Claim No. N° de concession minière <i>1249955</i>
Date Hole Started Date de commencement du forage <i>March 09-2001</i>	Date Completed Date d'achèvement <i>March 13-2001</i>	Date Logged Date d'inscription au journal <i>April 16 01</i>	Logged by Inscrit par <i>C. Jim Lawlaw</i>	FI/PI		Location (Twp, Lot, Con. or Lat. and Long.) Emplacement (canton, lot, concession, ou latitude et longitude) <i>Law Twp</i>	
Exploration Co., Owner or Optionee Compagnie d'exploration, propriétaire ou titulaire d'option <i>Temex Res. Corp.</i>	Date Submitted Date de dépôt <i>April 23/01</i>	Submitted by (Signature) Déposé par (signature) <i>J.D.B.</i>		FI/PI		Property Name Nom de la propriété <i>Wilson Lake Project</i>	

Footage/Avancement		Rock Type Type de roche	Description (Colour, grain size, texture, minerals, alteration, etc.) Description (Couleur, granulométrie, texture, minéraux, transformation, etc.)	Plane Feature Angle / Angle des caractéristiques planes	Core Specimen Footage / Longueur en pieds des carottes prélevées	Your Sample No. N° d'échantillon du prospecteur	Sample Footage/Niveau de prélèvement de l'échantillon (en pieds) From/De To/A	Sample Length Longueur de l'échantillon	Assays † / Analyses minéralurgiques
137.6	156.4	Granodiorite	Brick red, medium to coarse-grained hypidiomorphic texture, with red feldspar, hornblende and minor quartz and trace blebby disseminated pyrite. Bands of fine-grained idiomorphic textured hornblende w/ epidote, plagioclase feldspar, quartz, and epidote filled veinlets and fractures ± < 2mm wide veinlets and blebs of pyrite. - mafic bands 105 up to 1.3' wide	40°, 45°, 90°					
	137.6 - 139.3		- intense epidote filled fracture from cutting granodiorite and more mafic bands. Carbonate reaction observed in fractures.	25°, 40° 50°					
	154.0 to 155.0		- Carbonate reaction observed in blocky fracture zone						
			Contact @ 156.4. strongly banded upper edge with planar surface lower edge contact	35°					
156.4	178.1	Granodiorite	medium-grey, mottled white to green, medium to coarse grained inequigranular hypidiomorphic textured hornblende feldspar quartz, trace euhedral to disseminated blebby pyrite						

0204 (03/91)

\* For features such as foliation, bedding, schistosity, measured from the long axis of the core.

\* Exemples de caractéristiques : foliation, schistosité, stratification. L'angle est mesuré par rapport à l'axe longitudinal de la carotte.

† Additional credit available. See Assessment Work Regulation.

† Des crédits supplémentaires sont offerts. Consulter les règlements relatifs aux travaux d'évaluation

Note : Dans cette formule, lorsqu'il désigne des personnes, le masculin est utilisé au sens neutre.



Ministry of  
Northern Development  
and Mines

Ministère du  
Développement du Nord  
et des Mines

**Diamond Drilling Log** **Journal de forage au diamant**

*(Jim Ludlow - April 16-01)*  
*Temiskaming ON*

Complete this form and related sketch in duplicate.  
Remplir en deux exemplaires la présente formule et le croquis annexé

Fill in on every page  
Remplir ces cases à chaque page

Hole No. Forage n°	Page No Page n°
WLD-031	4/7

Drilling Company Compagnie de forage	Timmins Metal Corp 1340 Delnute Road Timmins ON P4N 7C2	Collar Elevation Élévation du collier	Bearing of hole from true North/Position du forage par rapport au nord vrai	Total Footage Avancement total du forage	Dip of Hole at Inclinaison du forage au	Address/Location where core stored Adresse/endroit où la carotte est stockée	Map Reference No. N° de référence sur la carte	Claim No. N° de concession minière
Date Hole Started Date de commencement du forage	Date Completed Date d'achèvement	Date Logged Date d'inscription au journal	Logged by Inscrit par		Collar/collier			
March 09 - 2001	March 13 - 2001	April 16 - 01	J. Timbarthau	20°	45	Temex Res. Corp. Field Office North Temiskaming ON	Plan G-2835	1249955
Exploration Co., Owner or Optionee Compagnie d'exploration, propriétaire ou titulaire d'option	Date Submitted Date de dépôt	Submitted by (Signature) Déposé par (signature)					Location (Twp, Lot, Con. or Lat. and Long.) Emplacement (canton, lot, concession, ou latitude et longitude)	Property Name Nom de la propriété
Temex Res. Corp.	April 21/01	R.P.B.					Law Twp	Wilson Lake Project

Footage/Avancement		Rock Type Type de roche	Description (Colour, grain size, texture, minerals, alteration, etc.) Description (Couleur, granulométrie, texture, minéraux, transformation, etc.)	Placer Features Angle (Angle des caractéristiques placées)	Dip Specimen Forage (Longueur en pieds des carottes prélevées)	Your Sample No. N° d'échantillon du prospecteur	Sample Footage/Reveau de prélevement de l'échantillon (en pieds)	Sample Length Longueur de l'échantillon	Assays †/Analyses minéralurgiques
From/De	To/À						From/De	To/À	
			Contact at 178.1 - epidote fracture	35°					
178.1	183.9	Granodiorite	Dark grey medium-grained idiomorphic textured, hornblende, feldspar, quartz, well defined flow orientation.	80°					
	182.1 to 183.9		quartz into a gneissic schistosity unit with strong folia compositionally a granodiorite - terminates at 1' milky white to grey quartz vein	50° 20°					
			Contact 183.9						
183.9	235.3	Granodiorite	Medium-grey mottled whitish green medium to coarse grained inequigranular hypidiomorphic textured - hornblende, feldspar, quartz						
	228.9 to 229.95		- epidote fracture	20°					
	233.0 to 233.6		- epidote fracture in coarse-grained pink feldspar incl vein like band	10°					
			Contact at 235.3	50°					

0204 (03/91)

\* For features such as foliation, bedding, schistosity, measured from the long axis of the core.  
\* Exemples de caractéristiques : foliation, schistosité, stratification. L'angle est mesuré par rapport à l'axe longitudinal de la carotte.

† Additional credit available. See Assessment Work Regulation.  
† Des crédits supplémentaires sont offerts. Consulter les règlements relatifs aux travaux d'évaluation  
Nota : Dans cette formule, lorsqu'il désigne des personnes, le masculin est utilisé au sens neutre.



Ministry of  
Northern Development  
and Mines

Ministère du  
Développement du Nord  
et des Mines

**Diamond Journal de  
Drilling forage au  
Log diamant**

*C. J. Timlanlaw April 16-01  
Timmins ON*

Complete this form and  
related sketch in duplicate.  
Remplir en deux exemplaires la  
présente formule et le croquis annexé

Fill in on every page  
Remplir ces cases à  
chaque page

Hole No. Forage n°	Page No. Page n°
WLD 031	5/7

Drilling Company Compagnie de forage 705-268-7659 Timmins Metal Corp. 1340 Dolnick Road Timmins ON P4N 7C2	Collar Elevation Élévation du collier	Bearing of hole from true North/Position du forage par rapport au nord vrai 90	Total Footage Avancement total du forage 329.85	Dip of Hole at Inclinaison du forage au Collar/collier 45	Address/Location where core stored Adresse/endroit où la carotte est stockée Tamar Res. Corp Field office North Temagami ON	Map Reference No. N° de référence sur la carte Plan S-2835	Claim No. N° de concession minière 1249955
Date Hole Started Date de commencement du forage March 09-2001	Date Completed Date d'achèvement March 13-2001	Date Logged Date d'inscription au journal April 16-01	Logged by Inscrit par C. J. Timlanlaw	F.I./P.I.		Location (Twp, Lot, Con. or Lat. and Long.) Emplacement (canton, lot, concession, ou latitude et longitude) Law Twp	
Exploration Co., Owner or Optionee Compagnie d'exploration, propriétaire ou titulaire d'option Tamar Res. Corp	Date Submitted Date de dépôt April 23/2001	Submitted by (Signature) Déposé par (signature) D.P.S.		F.I./P.I.		Property Name Nom de la propriété Wilson Lake Project	

Footage/Avancement		Rock Type Type de roche	Description (Colour, grain size, texture, minerals, alteration, etc.) Description (Couleur, granulométrie, texture, minéraux, transformation, etc.)	Placer Feature Angle / Angle des caractéristiques planes	Core Specimen Footage / Longueur en pieds des carottes prélevées	Your Sample No N° d'échantillon du prospecteur	Sample Footage/Niveau de pré- levement de l'échantillon (en pieds)	Sample Length Longueur de l'échantillon	Assays † / Analyse minéralurgiques
From/De	To/À						From/De	To/À	
235.3	236.5	Granodiorite	pink to pinkish-grey fine-grained hypidiomorphic textured, feldspar, hornblende, trace quartz, with pervasive epidote and epidote filled fractures - upper contact crosscutting upper rock unit, at - lower contact defined by planar contact with lower rock unit at a pink feldspathic vein, at Contact at 236.5	15° 40° 80° 50° 60°					
236.5	302.5	Granodiorite	medium-grey, mottled whitish-green, medium to coarse-grained inequigranular hypidiomorphic textured, hornblende, feldspar, quartz - flow orientation 40, 50° 70°						
	251.6 to 254.5		pink and white coarse grained feldspathic band with epidote filled fractures, diffuse contact 30 to 50°						
	262.9 to 263.3		pink and white coarse grained feldspathic band, diffuse contact 30 to 50°						
	265.5 to 265.6		.1' wide fine grained pink feldspathic vein 70°						

0204 (03/01)

\* For features such as foliation, bedding, schistosity, measured from the long axis of the core.  
\* Exemples de caractéristiques : foliation, schistosité, stratification. L'angle est mesuré par rapport à l'axe longitudinal de la carotte.

† Additional credit available. See Assessment Work Regulation.  
† Des crédits supplémentaires sont offerts. Consulter les règlements relatifs aux travaux d'évaluation  
Nota : Dans cette formule, lorsqu'il désigne des personnes, le masculin est utilisé au sens neutre.



Ministry of  
Northern Development  
and Mines

Ministère du  
Développement du Nord  
et des Mines

**Diamond Journal de  
Drilling forage au  
Log diamant**

*(Jim Tardieu April 16 01  
Temagami ON)*

Complete this form and  
related sketch in duplicate.  
Remplir en deux exemplaires la  
présente formule et le croquis annexé

Fill in on every page  
Remplir ces cases à  
chaque page

Hole No. Forage n°	Page No. Page n°
WLD 031	6/7

Drilling Company Compagnie de forage 705-268-7659 Timmins Metal Corp. 1370 Delnrite Road Timmins ON P4N7C2	Collar Elevation Élévation du collier	Bearing of hole from true North/Position du forage par rapport au nord vrai 90	Total Footage Avancement total du forage 329.95	Dip of Hole at Inclinaison du forage au Collar/collier 45	Address/Location where core stored Adresse/endroit où la carotte est stockée Temagami Res. Corp Field office North Temagami ON	Map Reference No. N° de référence sur la carte 11A05-2835	Claim No. N° de concession minière 1248955
Date Hole Started Date de commencement du forage March 09-2001	Date Completed Date d'achèvement March 13-2001	Date Logged Date d'inscription au journal April 16-01	Logged by Inscrit par C. J. Tardieu	FI/PI		Location (Twp, Lot, Con. or Lat. and Long.) Emplacement (canton, lot, concession, ou latitude et longitude) Law Twp	
Exploration Co., Owner or Optionee Compagnie d'exploration, propriétaire ou titulaire d'option Temagami Res. Corp.		Date Submitted Date de dépôt April 27, 2001	Submitted by (Signature) Déposé par (signature) N.S.	FI/PI		Property Name Nom de la propriété Wilson Lake Project	

Footage/Avancement		Rock Type	Description (Colour, grain size, texture, minerals, alteration, etc.)	Placer Feature	Core Specimen	Your Sample No.	Sample Footage/ Niveau de pré-	Sample Length	Assays / Analyses minéralurgiques	
From/De	To/A	Type de roche	Description (Couleur, granulométrie, texture, minéraux, transformation, etc.)	Angle / Angle des caractéristiques planes	Footage / Longueur en pieds des carottes prélevées	N° d'échantillon du prospecteur	lèvement de l'échantillon (en pieds)	Longueur de l'échantillon		
236.5	302.5	Granodiorite								
		continued								
		263.6	spotty moderate carbonate reaction in fracture	20°						
		273.0	.05' wide pink feldspathic vein with grey quartz core	20°						
		279.0 to 279.8	Pink feldspathic band, vein-like structure cut by narrow earthy red hematite filled fracture.	15°						
		285.0 to 292.8	Pervasive hematitic wash throughout section, numerous hematite filled fractures with spotty moderate carbonate reaction	15°, 25°, 30°	70°					
		296.35 to 296.70	fracture hematite stained	50°						
			contact at 302.4 at planar hematite filled vein .25' wide	40°						
302.5	317.5	hornblende Granodiorite	Dark grey, green mottled, porphyritic, red hematite wash, fine to coarse-grained, inequigranular, idiomorphic textured, numerous carbonate hematite filled fractures, hornblende, feldspar, with minor quartz and biotite							

0204 (03/91)

\* For features such as foliation, bedding, schistosity, measured from the long axis of the core.

\* Exemples de caractéristiques : foliation, schistosité, stratification. L'angle est mesuré par rapport à l'axe longitudinal de la carotte.

† Additional credit available. See Assessment Work Regulation.

† Des crédits supplémentaires sont offerts. Consulter les règlements relatifs aux travaux d'évaluation

Nota : Dans cette formule, lorsqu'il désigne des personnes, le masculin est utilisé au sens neutre.



Ministry of  
Northern Development  
and Mines

Ministère du  
Développement du Nord  
et des Mines

**Diamond Journal de  
Drilling forage au  
Log diamant**

Complete this form and  
related sketch in duplicate.  
Remplir en deux exemplaires la  
présente formule et le croquis annexé

Fill in on every page  
Remplir ces cases à  
chaque page

Hole No.  
Forage n°  
WLD-031

Page No.  
Page n°  
7/7

Drilling Company Compagnie de forage 705, 268, 7th St. Timmins Timmins Metal Corp 1340 Deloit Road Timmins ON P4N 7C2	Collar Elevation Élévation du collier	Bearing of hole from true North/Position du forage par rapport au nord vrai 40	Total Footage Avancement total du forage 329.95	Dip of Hole at Inclinaison du forage au Collar/collier 45	Address/Location where core stored Adresse/endroit où la carotte est stockée Temex Res. Corp Field Office North Temagami ON	Map Reference No. N° de référence sur la carte Plan G-2835	Claim No. N° de concession minière 1249955
Date Hole Started Date de commencement du forage March 09-2001	Date Completed Date d'achèvement March 13-2001	Date Logged Date d'inscription au journal April 16-01	Logged by Inscrit par C. Simard/Law	F.I./P.I. F.I./P.I. F.I./P.I. F.I./P.I.	Location (Twp, Lot, Con. or Lat. and Long.) Emplacement (canton, lot, concession, ou latitude et longitude) Law Twp	Property Name Nom de la propriété Wilson Lake Project	
Exploration Co., Owner or Optionee Compagnie d'exploration, propriétaire ou titulaire d'option Temex Res. Corp.		Date Submitted Date de dépôt April 27, 2001	Submitted by (Signature) Déposé par (signature) R.S.				

Footage/Avancement		Rock Type	Description	Plane Feature	Core Specimen	Your Sample No.	Sample Footage/Niveau de pré-	Sample Length	Assays †/Analyses minéralurgiques
From/De	To/À	Type de roche	Description (Couleur, granulométrie, texture, minéraux, transformation, etc.)	Angle (Angle des caractéristiques planes)	Footage / Longueur en pieds des carottes prélevées	N° d'échantillon du prospecteur	lèvement de l'échantillon (en pieds)	Longueur de l'échantillon	
302.5	317.5	hornblende Granodiorite continued	313.6 to 315.7 hematized chlorite - quartz - carbonate fault, blocky fractured, earthy, crumbly Core						
317.5	329.95	Granodiorite	Medium - grey, mottled whitish green, medium to coarse-grained, inequigranular hypidiomorphic textured; hornblende, feldspar, quartz.						
		320.1 to 328.5	Epidote filled veins and fractures with spotty carbonate reaction 40°, 50°, 60°						
		EOH	329.95						
				C. Simard/Law April 16 - 01					
				Temagami ON					

0204 (03/01)

\* For features such as foliation, bedding, schistosity, measured from the long axis of the core.

\* Exemples de caractéristiques : foliation, schistosité, stratification. L'angle est mesuré par rapport à l'axe longitudinal de la carotte.

† Additional credit available. See Assessment Work Regulation.

† Des crédits supplémentaires sont offerts. Consulter les règlements relatifs aux travaux d'évaluation.

Nota : Dans cette formule, lorsqu'il désigne des personnes, le masculin est utilisé au sens neutre.



Ministry of  
Northern Development  
and Mines

Ministère du  
Développement du Nord  
et des Mines

**Diamond Journal de  
Drilling forage au  
Log diamant**

Complete this form and  
related sketch in duplicate.  
Remplir en deux exemplaires la  
présente formule et le croquis annexé

Fill in on every page  
Remplir ces cases à  
chaque page

Hole No. Forage n°	Page No. Page n°
W10034	1

Drilling Company Compagnie de forage Timmins Metal Corp. 705-268-7657 1340 Delnick Road Timmins ON P4N 7C2	Collar Elevation Élévation du collier	Bearing of hole from true North/Position du forage par rapport au nord vrai 0°	Total Footage Avancement total du forage 210'	Dip of Hole at Inclinaison du forage au Collar/collier -45°	Address/Location where core stored Adresse/l'endroit où la carotte est stockée Tenor Resources Corp. Field Office North-Temagami ON	Map Reference No. N° de référence sur la carte Plan E-1668	Claim No. N° de concession minière 1230597
Date Hole Started Date de commencement du forage February 18-2001	Date Completed Date d'achèvement February 21-2001	Date Logged Date d'inscription au journal Feb 22, 2001	Logged by Inscrit par Duane Parnham	FL/PI		Location (Twp, Lot, Con. or Lat. and Long.) Emplacement (canton, lot, concession, ou latitude et longitude) Milne Twp.	Property Name Nom de la propriété Miller Lake Group
Exploration Co., Owner or Optionee Compagnie d'exploration, propriétaire ou titulaire d'option Tenor Resources Corp.	Date Submitted Date de dépôt April 23/01	Submitted by (Signature) Déposé par (signature) RPS		FL/PI			

Footage/Avancement		Rock Type Type de roche	Description (Colour, grain size, texture, minerals, alteration, etc.) Description (Couleur, granulométrie, texture, minéraux, transformation, etc.)	Placer Feature Angle/Ange des caractéristiques planes	Core Specimen Footage / Longueur en pieds des carottes prélevées	Your Sample No. N° d'échantillon du prospecteur	Sample Footage/Niveau de pré- lèvement de l'échantillon (en pieds) From/De To/À	Sample Length Longueur de l'échantillon	Assays †/Analyses minéralurgiques
0	33	Overburden	Till.						
33	136	Granite	Pink, coarse grained plagioclase, minor hornblende and quartz, massive.						
136	140	Granite	Red, clay altered fault.						
140	142	Granite	Pink, coarse grained, plagioclase						
142	143	Granodiorite	Pink, banded.						
143	145	Granite	Pink, clayey, breccia and fractured fault.						
145	152	Granite	Pink, coarse grained decussate texture, feldspar, quartz, hornblende, minor biotite.						
			148 to 152 banded layers of hornblende						
152	153.3	Granite	fault, clayey, fractured.						
153.3	210	Granite	Black fine-grained fractured banded hornblende, quartz layers epidote, biotite, disseminated pyrite			N 683257	202 210	8'	Pt Pd Au 32 elements ICP AFS
			EOH 210'						

0204 (03/91)

\* For features such as foliation, bedding, schistosity, measured from the long axis of the core.

\* Exemples de caractéristiques : foliation, schistosité, stratification. L'angle est mesuré par rapport à l'axe longitudinal de la carotte.

† Additional credit available. See Assessment Work Regulation.

† Des crédits supplémentaires sont offerts. Consulter les règlements relatifs aux travaux d'évaluation

Nota : Dans cette formule, lorsqu'il désigne des personnes, le masculin est utilisé au sens neutre.



Ministry of  
Northern Development  
and Mines

Ministère du  
Développement du Nord  
et des Mines

**Diamond Journal de  
Drilling forage au  
Log diamant**

Complete this form and  
related sketch in duplicate.  
Remplir en deux exemplaires la  
présente formule et le croquis annexé

Fill in on every page  
Remplir ces cases à  
chaque page

Hole No.  
Forage n°  
w20039

Page No.  
Page n°  
1/1

Drilling Company  
Compagnie de forage  
765-268 Timmins ON P4N7C2  
7659  
Timmins Metal Corp.

Collar Elevation  
Élévation du collier

Bearing of hole from true  
North/Position du forage  
par rapport au nord vrai  
10°

Total Footage  
Avancement total du  
forage  
225

Dip of Hole at  
Inclinaison du forage au  
Collar/collier -45°

Address/Location where core stored  
Adresse/endroit où la carotte est stockée  
Temex Res. Corp.  
Field of Acc.  
North Temagami  
ON

Map Reference No.  
N° de référence sur la carte  
Plan G-1666

Claim No.  
N° de concession minière  
1230597

Date Hole Started  
Date de commencement du forage  
February 5-2001

Date Completed  
Date d'achèvement  
February 7-2001

Date Logged  
Date d'inscription au  
journal  
Feb 8, 2001

Logged by  
Inscrit par  
Duane Parnham

Exploration Co., Owner or Optionee  
Compagnie d'exploration, propriétaire ou titulaire d'option  
Temex Res. Corp.

Date Submitted  
Date de dépôt  
April 23/2001

Submitted by (Signature)  
Déposé par (signature)  
[Signature]

Location (Twp, Lot, Con. or Lat. and Long.)  
Emplacement (canton, lot, concession, ou latitude et longitude)  
Milne Twp.

Property Name  
Nom de la propriété  
Miller Lakes Group

Footage/Avancement		Rock Type Type de roche	Description (Colour, grain size, texture, minerals, alteration, etc.) Description (Couleur, granulométrie, texture, minéraux, transformation, etc.)	Planar Feature Angle/Degre des caractéristiques planes	Core Specimen Footage/Longueur en pieds des carottes prélevées	Your Sample No. N° d'échantillon du prospecteur	Sample Footage/Niveau de pré- lèvement de l'échantillon (en pieds)	Sample Length Longueur de l'échantillon	Assays †/Analyses minéralurgiques
From/De	To/À						From/De	To/À	
0	10	overburden	Till						
10	105	Granite	Pink and black banded, fine to coarse grained, gneissose texture pink feldspathic quartz rich bands and with medium grained massive to gneissose textured hornblende ± pink feldspar ± quartz ± biotite	60-80°					
			- 59 to 70' strong schistose blocky quartz-hornblende biotite rich fault. trace euhedral disseminated pyrite and hematite coated fractures	15°					
105	112	Diabase	Black fine-grained non-magnetic, with quartz and chlorite, disseminated cpy.						
112	225	Granite	Pink to black banded, gneissose banded feldspar hornblende, quartz, biotite, flow orientation - 121 to 123' fault	90° 20°					
			EOH 225'						

0204 (03/91)

\* For features such as foliation, bedding, schistosity, measured from the long axis of the core.

\* Exemples de caractéristiques : foliation, schistosité, stratification. L'angle est mesuré par rapport à l'axe longitudinal de la carotte.

† Additional credit available. See Assessment Work Regulation.

† Des crédits supplémentaires sont offerts. Consulter les règlements relatifs aux travaux d'évaluation

Nota : Dans cette formule, lorsqu'il désigne des personnes, le masculin est utilisé au sens neutre.



Ministry of  
Northern Development  
and Mines

Ministère du  
Développement du Nord  
et des Mines

**Diamond Drilling Log** **Journal de forage au diamant**

Complete this form and related sketch in duplicate.  
Remplir en deux exemplaires la présente formule et le croquis annexé

Fill in on every page  
Remplir ces cases à chaque page

Hole No. Forage n°  
WLD039B

Page No. Page n°  
1/2

Drilling Company Compagnie de forage 705-268-7659 Timmins Metal Corp. 1340 Delnita Road Timmins ON P4N 7C2	Collar Elevation Élévation du collier	Bearing of hole from true North Position du forage par rapport au nord vrai 18°	Total Footage Avancement total du forage 534'	Dip of Hole at Inclinaison du forage au Collar/collier -45°	Address/Location where core stored Adresse/endroit où la carotte est stockée Tenex Resources Corp. Field Office North-Temagami ON	Map Reference No. N° de référence sur la carte Plan G-1666	Claim No. N° de concession minière 1230597
Date Hole Started Date de commencement du forage February 10-2001	Date Completed Date d'achèvement February 16-2001	Date Logged Date d'inscription au journal Feb 17, 2001	Logged by Inscrit par Duane Parnham	F1, P1	Property Name Nom de la propriété Miller Lake Group	Location (Twp, Lot, Con. or Lat. and Long.) Emplacement (canton, lot, concession, ou latitude et longitude) Milne Twp.	
Exploration Co., Owner or Optionee Compagnie d'exploration, propriétaire ou titulaire d'option Tenex Res. Corp.		Date Submitted Date de dépôt Apr. 12/2001	Submitted by (Signature) Déposé par (signature) [Signature]	F1, P1			
				F1, P1			
				F1, P1			

Footage/Avancement		Rock Type Type de roche	Description (Colour, grain size, texture, minerals, alteration, etc.) Description (Couleur, granulométrie, texture, minéraux, transformation, etc.)	Photo Feature Angle / Angle des caractéristiques plan	Core Specimen Footage † / Longueur en pieds des carottes prélevées	Your Sample No. N° d'échantillon du prospecteur	Sample Footage/Niveau de prélèvement de l'échantillon (en pieds) From/De	Sample Length Longueur de l'échantillon To/A	Assays † / Analyses minéralurgiques
0	12.0	overburden	Till						
12.0	99	Granodiorite	Pink to black banded fine to medium grained, crystalline, hornblende, plagioclase feldspars, biotite, chlorite, fine grained pyrite disseminated in darker bands						
99	255	Granite	Pink with black bands, fine to coarse grained plagioclase feldspar quartz, hornblende, epidote, biotite. Trace chalcopryite - 142' chlorite fractured and sugary texture - 185' fractures with biotite - 203' bluish-green chlorite in fractures - 245' banded coarse grained plagioclase feldspar - 253' biotite-chlorite schistose fault with <1% pyrite						

0204 (03/91)

\* For features such as foliation, bedding, schistosity, measured from the long axis of the core.

\* Exemples de caractéristiques : foliation, schistosité, stratification. L'angle est mesuré par rapport à l'axe longitudinal de la carotte.

† Additional credit available. See Assessment Work Regulation.

† Des crédits supplémentaires sont offerts. Consulter les règlements relatifs aux travaux d'évaluation.  
Nota : Dans cette formule, lorsqu'il désigne des personnes, le masculin est utilisé au sens neutre.





Ministry of  
Northern Development  
and Mines

Ministère du  
Développement du Nord  
et des Mines

**Diamond  
Drilling  
Log** **Journal de  
forage au  
diamant**

Complete this form and  
related sketch in duplicate.  
Remplir en deux exemplaires la  
présente formule et le croquis annexé

Fill in on every page  
Remplir ces cases à  
chaque page

Hole No. Forage n°	Page No. Page n°
WLD0798	2/2

Drilling Company Compagnie de forage 705. 268. 7659	Timmins Metal Corp. 1340 Delnrite Road Timmins ON P4N 7C2	Collar Elevation Élévation du collier	Bearing of hole from true North/Position du forage par rapport au nord vrai 18°	Total Footage Avancement total du forage 534	Dip of Hole at Inclinaison du forage au Collar/collier -45	Address/Location where core stored Adresse/endroit où la carotte est stockée Tenex Resources Corp. North Temagami ON	Map Reference No. N° de référence sur la carte Plan S-1668	Claim No. N° de concession minière 1230597
Date Hole Started Date de commencement du forage February 10 - 2001	Date Completed Date d'achèvement February 16 - 2001	Date Logged Date d'inscription au journal Feb 11/2001	Logged by Inscrit par Duane Parham		FL/PI		Location (Twp, Lot, Con. or Lat. and Long.) Emplacement (canton, lot, concession, ou latitude et longitude) Milne Twp	
Exploration Co., Owner or Optionee Compagnie d'exploration, propriétaire ou titulaire d'option Tenex Res. Corp.	Date Submitted Date de dépôt April 23/2001	Submitted by (Signature) Déposé par (signature) D.P.			FL/PI		Property Name Nom de la propriété Miller Lake Group	

Footage/Avancement		Rock Type Type de roche	Description (Colour, grain size, texture, minerals, alteration, etc.) Description (Couleur, granulométrie, texture, minéraux, transformation, etc.)	Photo Feature Angle / Angle des caractéristiques planes	Core Specimen Footage / Longueur en pieds des carottes prélevées	Your Sample No. N° d'échantillon du prospecteur	Sample Footage/ Niveau de pré- lèvement de l'échantillon (en pieds)		Sample Length Longueur de l'échantillon	Assays † / Analyses minéralurgiques
From/De	To/À						From/De	To/À		
255	513.6	Granodiorite	Pink to black, banded fine to medium grained hornblende, plagioclase feldspar, biotite and chlorite. - 259' biotite - chlorite schistose fault - 425' to 426' fractured clayrich fault							
513.6	534.0	Gabbro	Grey-green fine to medium grained, talcose magnetic, 1-2% fine grained disseminated pyrite			N 683253	520.3	526.9	6.6	
						N 683252	528.0	531.7	3.7	
						N 683254	532.0	534.5	2.5	
			End of Hole 534'							

0204 (03/91)

\*For features such as foliation, bedding, schistosity, measured from the long axis of the core.

\*Exemples de caractéristiques : foliation, schistosité, stratification. L'angle est mesuré par rapport à l'axe longitudinal de la carotte.

† Additional credit available. See Assessment Work Regulation.

† Des crédits supplémentaires sont offerts. Consulter les règlements relatifs aux travaux d'évaluation

Note : Dans cette formule, lorsqu'il désigne des personnes, le masculin est utilisé au sens neutre.

Date: 2001-AUG-31

GEOSCIENCE ASSESSMENT OFFICE  
933 RAMSEY LAKE ROAD, 6th FLOOR  
SUDBURY, ONTARIO  
P3E 6B5

TEMEX RESOURCES LTD.  
4307 KERRY DRIVE, SUITE 100  
BURLINGTON, ONTARIO  
L7L 1V8 CANADA

Tel: (888) 415-9845  
Fax: (877) 670-1555

**Submission Number:** 2.21077  
**Transaction Number(s):** W0170.00083

Dear Sir or Madam

**Subject: Approval of Assessment Work**

We have approved your Assessment Work Submission with the above noted Transaction Number(s). The attached Work Report Summary indicates the results of the approval.

At the discretion of the Ministry, the assessment work performed on the mining lands noted in this work report may be subject to inspection and/or investigation at any time.

The revisions outlined in the Notice dated July 18, 2001 have been corrected. Accordingly, assessment work credit has been approved as outlined on the AMENDED Declaration of Assessment Work Form accompanying this submission.

If you have any question regarding this correspondence, please contact BRUCE GATES by email at [bruce.gates@ndm.gov.on.ca](mailto:bruce.gates@ndm.gov.on.ca) or by phone at (705) 670-5856.

Yours Sincerely,



Ron Gashinski  
Supervisor, Geoscience Assessment Office

**Cc: Resident Geologist**

Dan Peter Bunner  
(Agent)

Douglas Lockhart Goddard  
(Claim Holder)

Temex Resources Ltd.  
(Claim Holder)

**Assessment File Library**

Gino Paul Chitaroni  
(Claim Holder)

David V. Jones  
(Claim Holder)

Temex Resources Ltd.  
(Assessment Office)



31M04SE2008 2.21077 RIDDELL

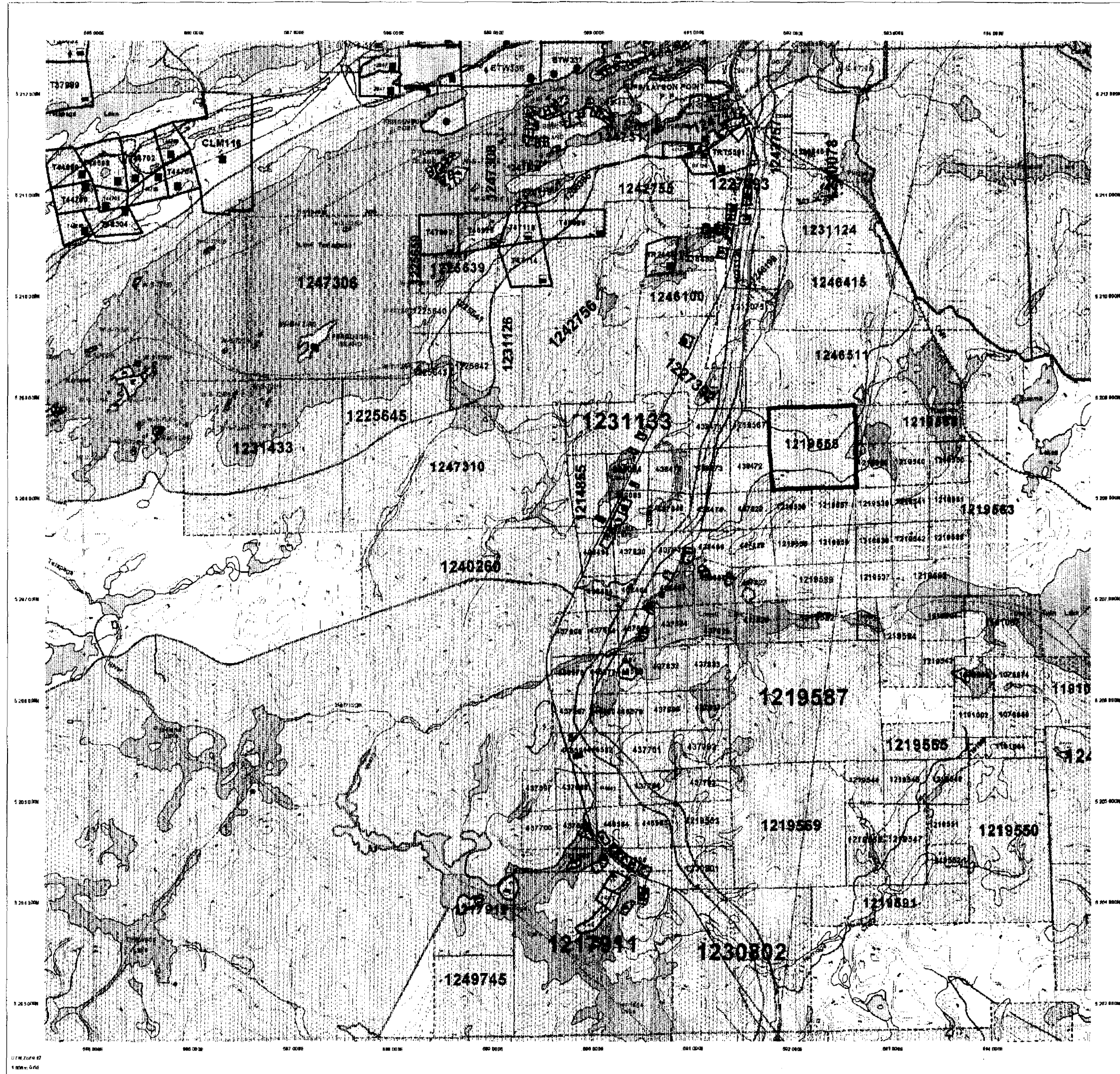
900





MINING LAND TENURE MAP

Date / Time of Issue Jun 22 2001 13:44h Eastern
TOWNSHIP / AREA STRATHCONA PLAN G-3450
ADMINISTRATIVE DISTRICTS / DIVISIONS Mining Division Sudbury Land Titles/Registry Division NIPISSING Ministry of Natural Resources District NORTH BAY



TOPOGRAPHIC and LAND TENURE legend. Includes symbols for Administrative Boundaries, Townships, Concessions, etc. Also includes LAND TENURE WITHDRAWALS and IMPORTANT NOTICES sections.

2.21077 PDRILL

LAND TENURE WITHDRAWAL DESCRIPTIONS table with columns: Section, Type, Date, Description. Lists various withdrawal events with dates from 1901 to 2001.

31M04SR2008 2.21077 RIDDILL 200

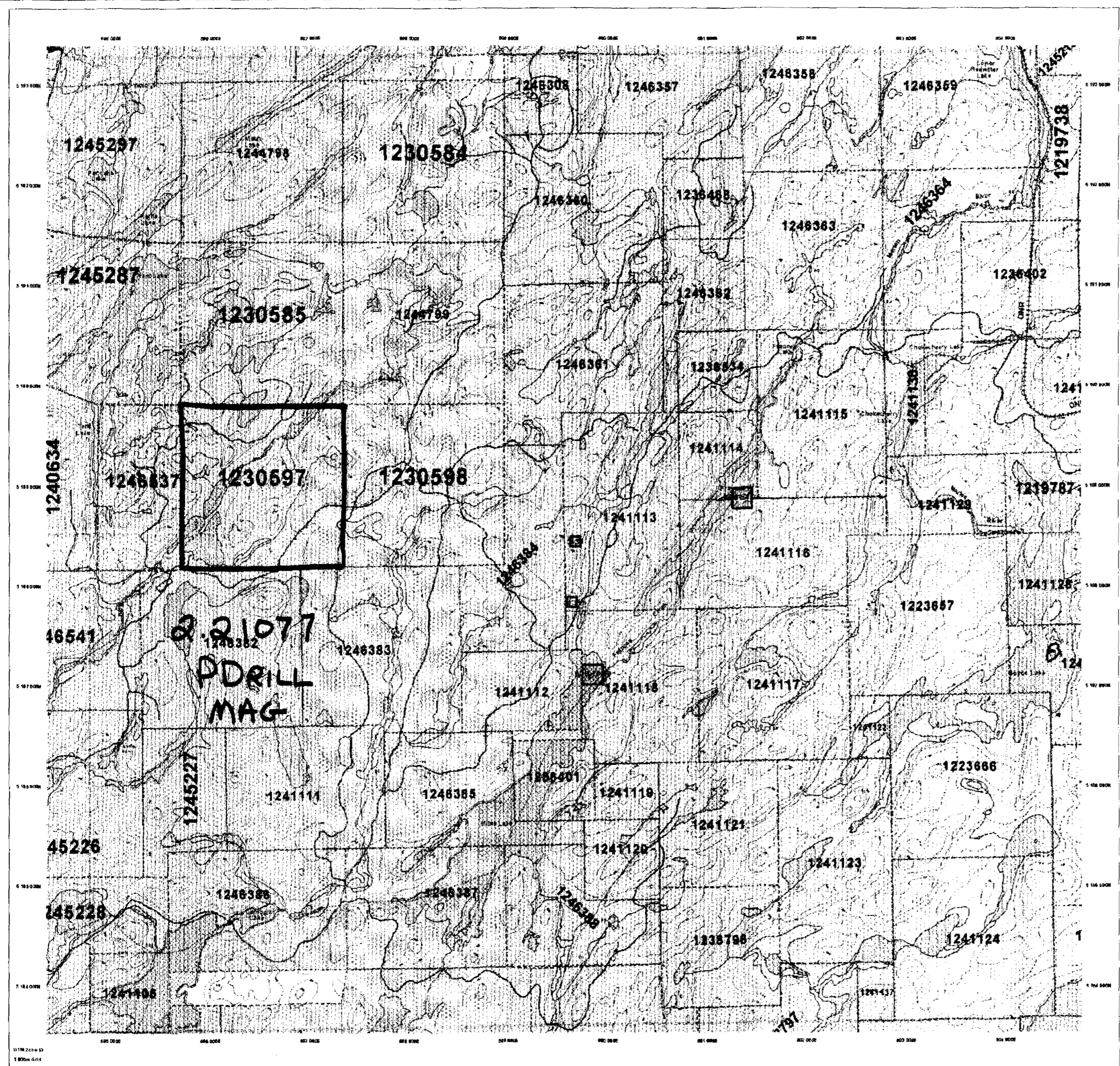


MINING LAND TENURE MAP

Date / Time of Issue Sep 4 2001 13:40h Eastern

TOWNSHIP / AREA MILNE PLAN G-1668

ADMINISTRATIVE DISTRICTS / DIVISIONS Mining Division Sudbury Land Titles/Registry Division NIPISSING Ministry of Natural Resources District NORTH BAY



TOPOGRAPHIC and LAND TENURE legend. Includes symbols for roads, rivers, and various land tenure types like 'Fronteral Patent' and 'Land Tenure Withdrawals'.

LAND TENURE WITHDRAWAL DESCRIPTIONS table with columns for Section, Year, Date, and Description.

IMPORTANT NOTICES section containing text about land tenure regulations and their effects.

3104SE2008 2.21077 RIDDELL 210

