



31M04SW0022 12 STRATHCONA

010

### Diamond Drilling

Township OF STRATHCONA

Report No: 12

Work performed by: STRATHAGAMI MINES INC.

Claim No	Hole No	Footage	Date	Note
T 39581	B-1	363'	June/60	
T 44703	B-2	676'	June/60	
	B-9	228'	Mar/61	
	B-11	236'	Mar/61	
T 43698	B-3	483'	June-July/60	
	B-4	383'	July/60	
	B-5	401'	July/60	
	B-8	248'	Mar/61	
	B-10	342'	Mar/61	
T 47248	B-6	800'	Mar/61	
T 44702	B-7	320'	Mar/61	
T 43710	B-12	229'	Mar/61	
	B-14	197'	Mar/61	
T 37987	D-1	201'	July/61	
	D-2	201'	July/61	
T 37986	D-3	200'	July-Aug/61	

Notes:

DIAMOND DRILL RECORD

Hole No. B-1

PROPERTY TERRANT L.A. 3256-G

Sheet No. 1

Location: Claim No. P. 39581  
 Lat. 14°52' N  
 Dep. 142m 3200N, Base Line "B"

Started June 9, 1960  
 Completed June 11, 1960  
 Ultimate Depth 350'  
 Proposed Depth 350'

Elevation of Collar \_\_\_\_\_

Datum \_\_\_\_\_

Bearing S 27° 30' E

Direction at Start:

Dip 45°

Date	Feet Drilled	Total Depth	Section			Remarks (Log)	Core Rec.	Original Bedding
			From	To	Feet			
June 9/60	60	60	0	12		Overburden		
			12	21.5		Tuff, gray with minor carbonates and disseminated pyrite		15'-45°
			21.5	29		Amphibole, fine banded, looks like iron formation. Local fine quartz in fractures		
			29	41		Tuff, gray with minor sections fine graphite schist (11-22 ground 2' core; 22-41 ground 1')	75%	
			41	50		Graphite schist with disseminated pyrite; 46'-1'	33%	
						massive pyrite (41-46 ground 4' core, 46-50 ground 2')		
			50	59		Tuff, light green, finely fractured with disseminated pyrite		
June 10/60	110	170	59	117		Interbanded tuff with gray and white chert, chert finely banded and brecciated. Minor graphite with		70'-45°

Drilled by Reath & Sherwood

E. R. Mead - R. W. Kiedel  
 Engineer in Charge

PROPERTY

TEMAGAMI

- L. O. 3296-C

Hole No. 11-1

Sheet No. 2

Date	Feet Drilled	Total Depth	Section			Remarks (Log)	Core Rec.	Crossin of Bedding
			From	To	Feet			
						pyrite and minor chalcopyrite.		
			117	128	11	Very lean magnetic cherty iron formation, Thin to thick banded, Fe L 15%, abundant disseminated pyrite		120'-50
			128	150		Interbanded buff with grey and white chert, local weakly magnetic sections.		
			150	163		Argillite with disseminated pyrite; 156'-6" quartz vein, 159'-4" quartz vein.		
June 11/60	116	286	163	175	12	Lean magnetic Jasper Iron formation, thin to medium banded		
			175	233	58	Normal magnetic cherty Jasper iron formation. Thin to medium banded; minor 1"-3" bands of argillite; locally brecciated, general disseminated pyrite.		
			233	269	36	Lean magnetic Jasper iron formation and thin to medium banded, argillaceous.		260'-60
			269	274		Magnetic cherty iron formation and vein quartz, abundant disseminated pyrite.		

J. C. Macdonald, geologist  
in charge

PROPERTY

TENAGANI

L.O. 3295-0

Hole No. (Bul)

Sheet No.

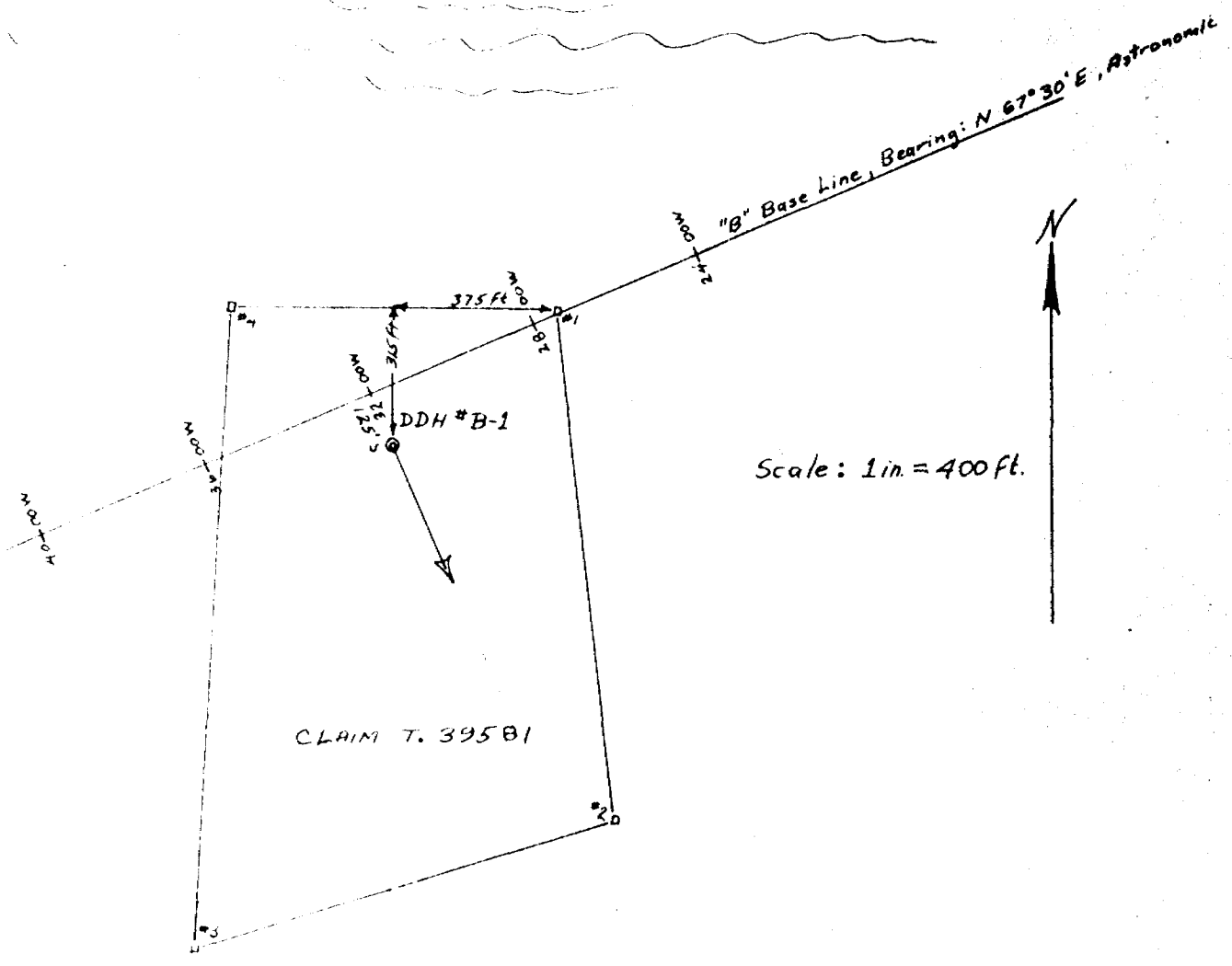
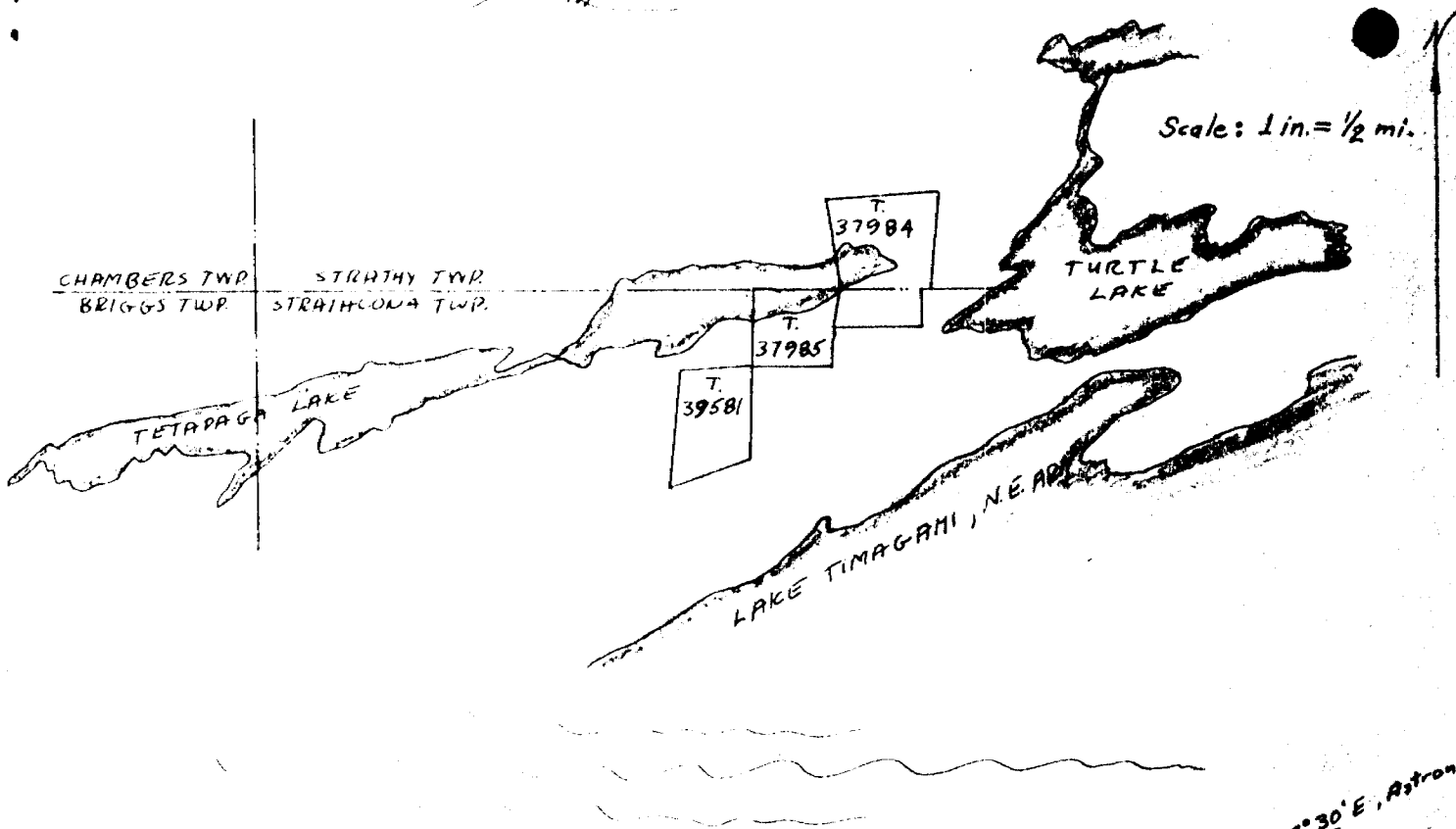
Date	Feet Drilled	Total Depth	Section			Remarks (Log)	Core Rec.	Crossing of Bedding
			From	To	Feet			
June 12/60	77	363	274	325	51	Massive magnetic cherty Jasper iron formation, thin to medium banded. Argillaceous (1.5-3" bands) locally fractured and brecciated. 316'-6" quartz vein with pyrite		320'-60°
			325	344	19	Interbedded normal magnetic cherty iron formation with lean magnetic cherty iron formation, argillaceous (2"-10" bands), brown chert common.		
			344	363		Argillite with interbedded chert containing minor magnetic sections.		360'-60°
						End of hole		
						Diplication Table		
						Depth	Observed	Corrected
						300'	46.5°	42.5°
						330'	47°	43°
						363'	44°	41.5°

E. H. Mead - E. H. Mead

E. H. Mead - E. H. Mead

TIMISKAMING MINING DIVISION  
ONTARIO

(E)



Cliffs of Canada Ltd.  
St. W. Bristol  
1-3296-C

DIAMOND DRILL RECORD

Hole No. E-2

PROPERTY TEMAGAMI - O.E. 1110-0

Sheet No. 1

Location: Claim No. T. 44703

Lat. 2+00N

Dep. Line 68+00W - Base Line "B"

Elevation of Collar

Datum

Bearing  $\approx 22^{\circ} 30'$  E

Direction at Start:

Dip  $-45^{\circ}$

Started June 20, 1960

Completed June 26, 1960

Ultimate Depth 676'

Proposed Depth 925'

Date	Feet Drilled	Total Depth	Section			Remarks (Log)	% Recov.	Crossing of Bedding
			From	To	Feet			
June 20/60	114	114	0	8	8	Overburden		
			8	28	20	Interbedded brown and light chert and tuff; well fractured. Abundant disseminated pyrite and pyrite veinlets and vugs.		
			28	94	66	Interbedded light and dark chert. Well fractured. Abundant chlorite and graphite and pyrite in fractures. (46-48, Ground 2'; 54-58, Ground 1'; 93-94, Ground 1')	88%	38°-45° 53°-35° 60°-50° 68°-38° 84°-50°
			94	108	14	Interbedded light chert and tuff		
June 21/60	79	193	108	154	46	Lean magnetic cherty iron formation; thin to medium bands, interbedded tuff (151-152, Ground 1')		118°-40° 115°-55°

by \_\_\_\_\_

R. C. Hartviksen  
in charge

1957-58

W. A. I. - G. M. 197-0

Hole No. 197-0  
Sheet No.

Date	Feet Drilled	Total Depth	Section		Feet	Remarks (Log)	Recovery	Elevation
			From	To				
June 22/60	87	260	154	251	97	Normal, magnetic, cherty, Jasper iron formation medium banded; minor interbedded tuff (229-230, Ground 1'; 233-235, Ground 2'; 231-239, Ground 2')	95%	270'-58" 240'-60"
			251	260	9	Interbedded andesite tuff and chert. Minor magnetite bands		
			260	272	12	Interbedded rhyolite tuff (grey) and light chert		
June 23/60	125	405	273	293	20	Lean magnetic cherty iron formation medium banded. Some 0-6" bands tuff		
			293	298	5	Andesite tuff (green)		
			298	313	15	Interbedded tuff (green) Normal magnetic cherty iron formation medium banded		
			313	355	42	Interbedded andesitic tuff and light chert		
			355	371	16	Lean to normal magnetic cherty iron formation, medium banded. Interbedded tuff (light green)		370'-70"
			371	388	17	Interbedded andesite tuff (light green) and chert		370'-20"
			388	405	17	Rhyolite tuff, light yellow, quartz eyes		350'-70"
			405	405	0	Interbedded andesitic tuff (light green) and light		

W. A. I. - G. M. 197-0  
Sheet No. 197-0

Date	No. of Drills	Total Depth	Section			Remarks (Log)	No. of Drills	No. of Drills
			From	To	Feet			
June 24/50	118	519	400	420	19	and dark shales, slightly magnesian		
			420	450	30	to white shales, light yellow		
			450	470	20	to dark shales, magnesian, fine grained rock		
			470	480	10	to dark shales, magnesian, fine grained rock		
June 25/50	121	600	480	500	20	to dark shales, magnesian, fine grained rock		
			500	520	20	to dark shales, magnesian, fine grained rock		
			520	540	20	to dark shales, magnesian, fine grained rock		
			540	560	20	to dark shales, magnesian, fine grained rock		
			560	580	20	to dark shales, magnesian, fine grained rock		
June 26/50	122	670	580	600	20	to dark shales, magnesian, fine grained rock		
			600	620	20	to dark shales, magnesian, fine grained rock		
			620	640	20	to dark shales, magnesian, fine grained rock		
			640	660	20	to dark shales, magnesian, fine grained rock		
			660	680	20	to dark shales, magnesian, fine grained rock		

Sheet No. 1

50

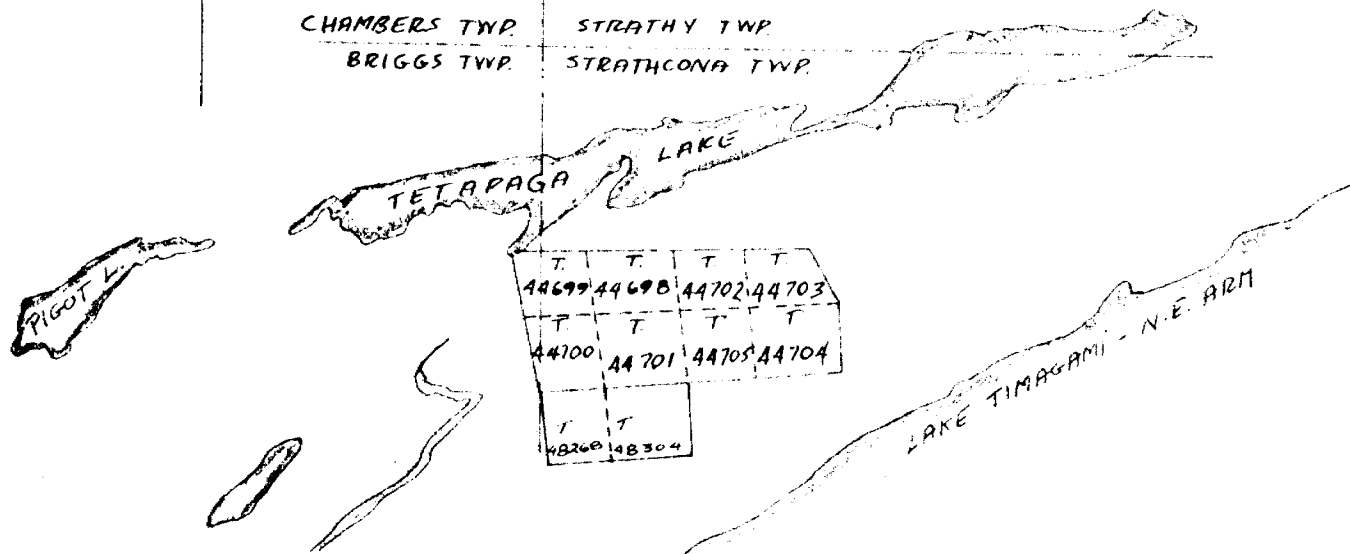
50

50

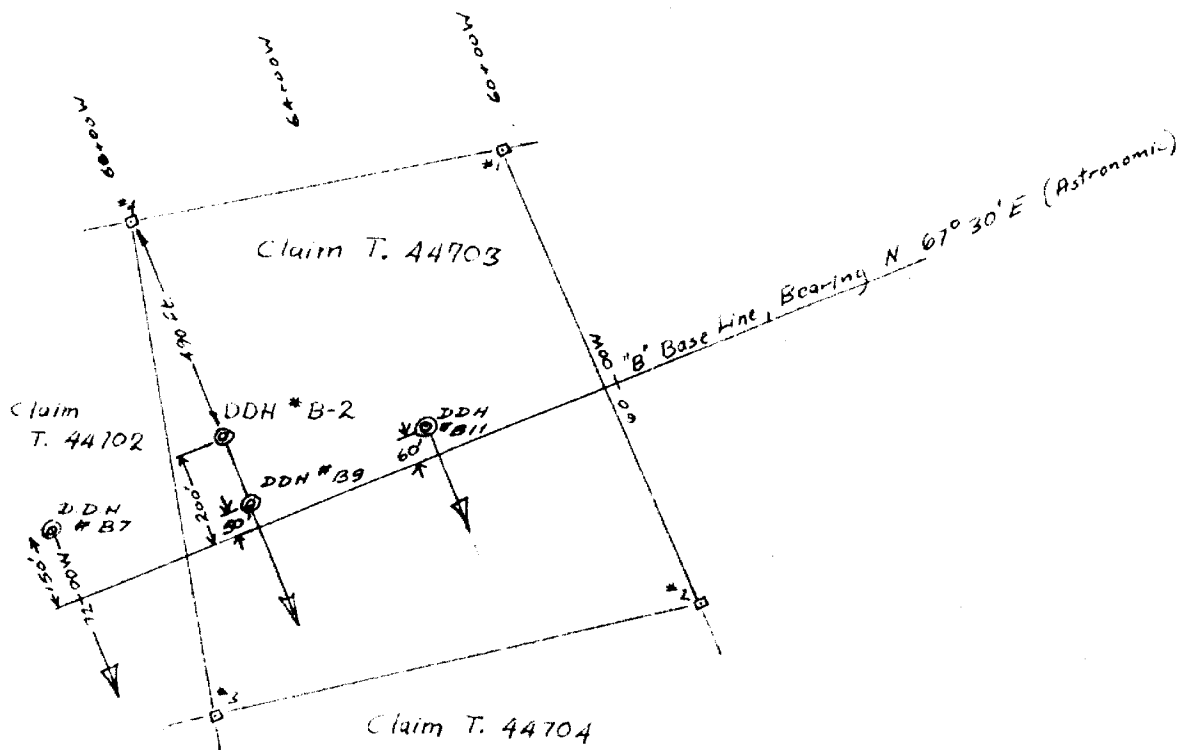


TIMISKAMING MINING DIVISION  
ONTARIO

Scale: 1 in = 1/2 mi.



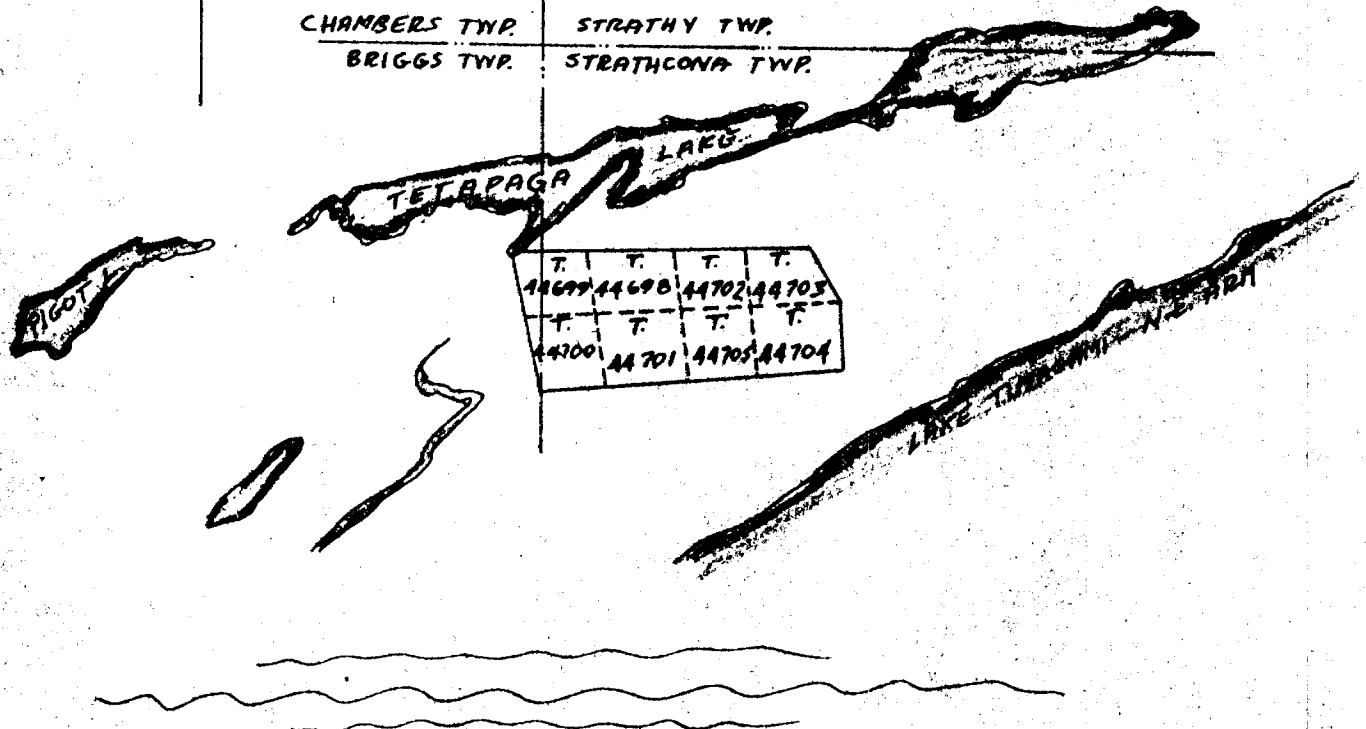
Scale: 1 in. = 400 ft.



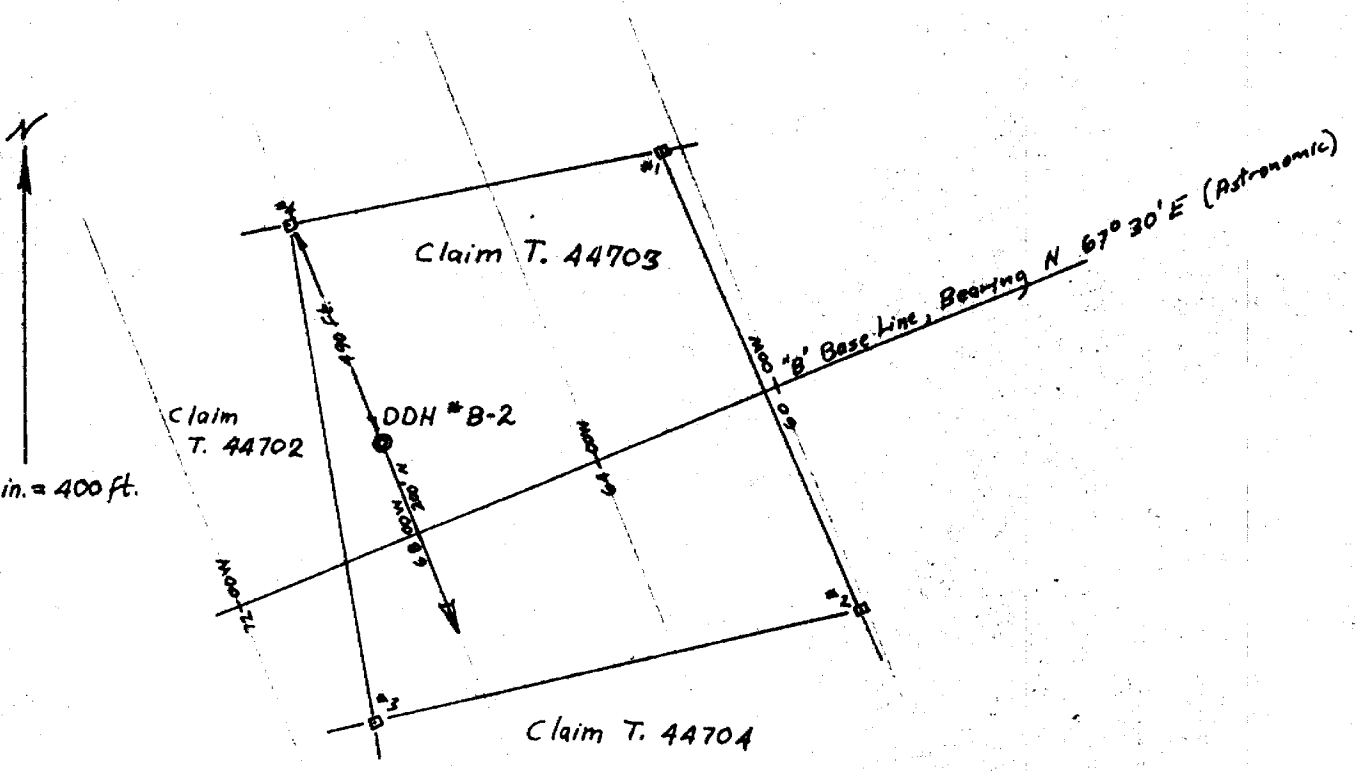
TIMISKAMING MINING DIVISION  
ONTARIO

Scale: 1 in = 1/2 mi.

CHAMBERS TWP.      STRATHY TWP.  
BRIGGS TWP.      STRATHCONA TWP.



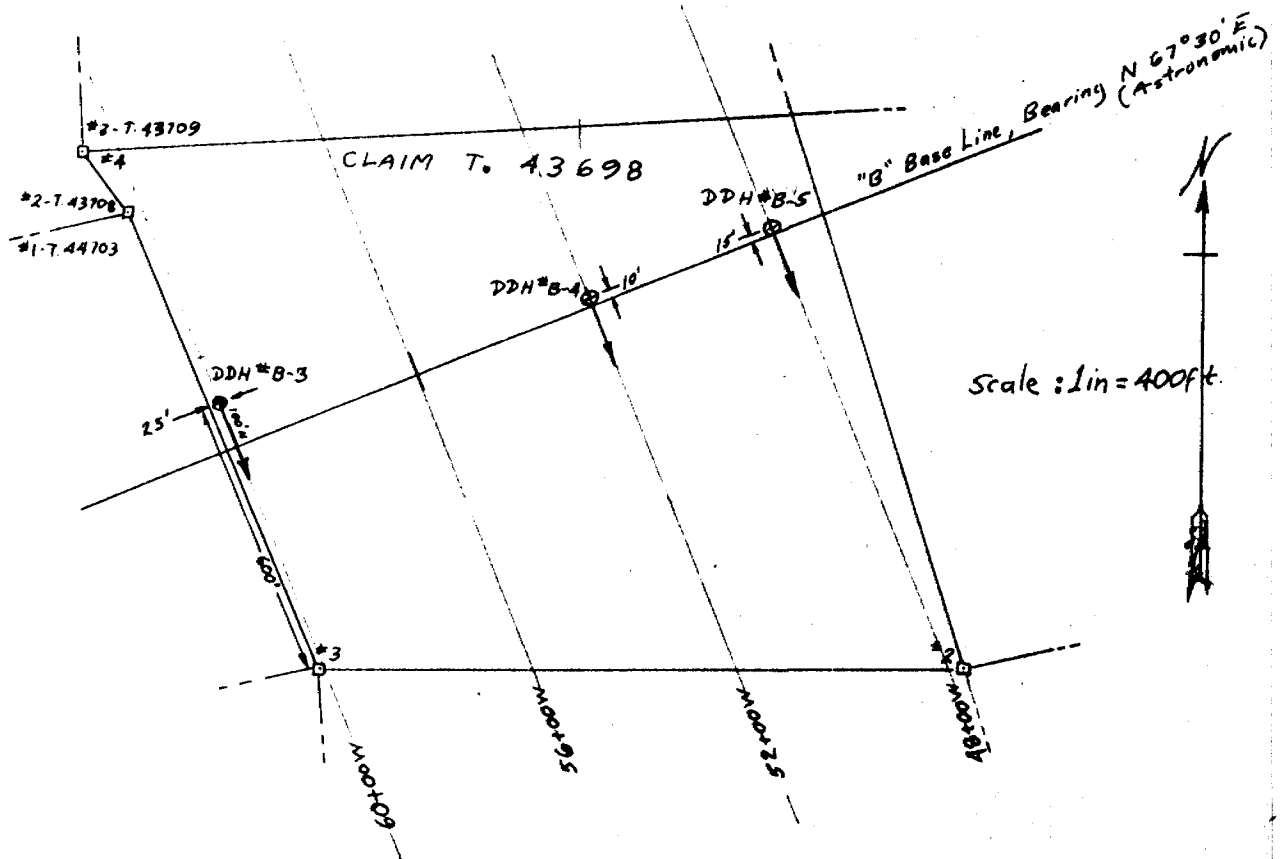
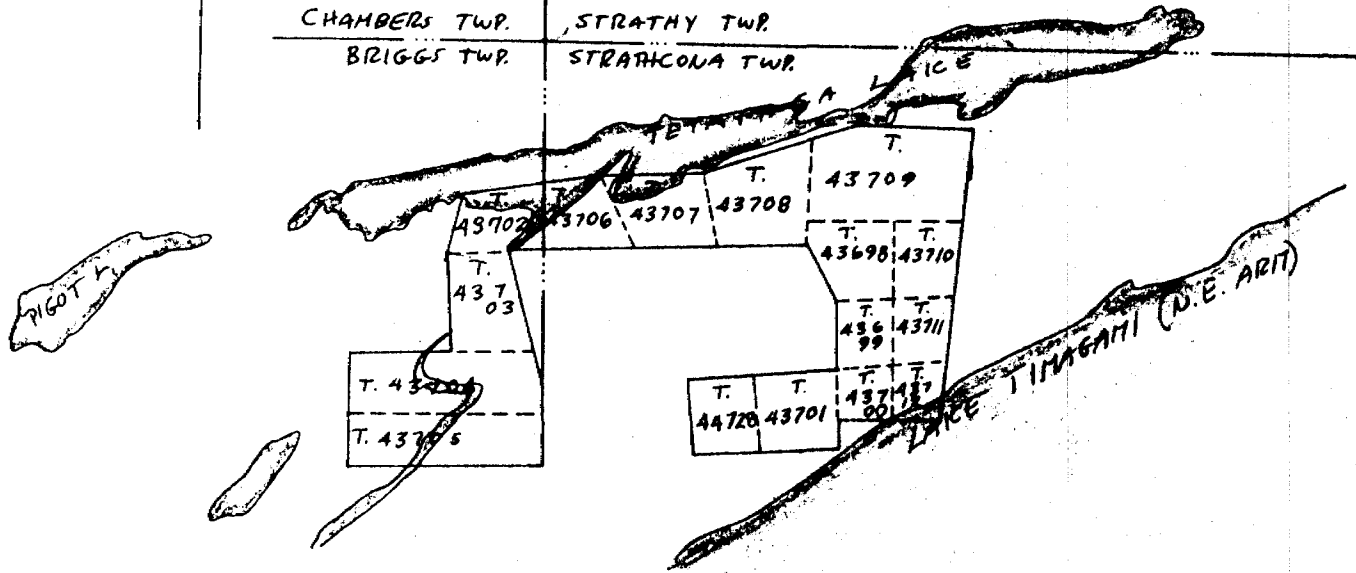
Scale: 1 in. = 400 ft.



Cliffs of Canada Ltd.  
P.W. Riedel  
LO 3298-C

TIMISKAMING MINING DIVISION  
ONTARIO

Scale: 1 in = 1/2 mi



2110

DIAMOND DRILL RECORD

Hole No. B-3

PROPERTY TRACANT - L.O. 3266-C

Sheet No. 1

Location: Claim No. 7.13698  
 Lat. 1400N  
 Dep. Line 60+00' Base Line "B"

Started June 29, 1960  
 Completed July 3, 1960  
 Ultimate Depth 183  
 Proposed Depth 120

Elevation of Collar \_\_\_\_\_  
 Datum \_\_\_\_\_

Bearing S22°30' E

Direction at Start:

Dip 15°

Date	Feet Drilled	Total Depth	Section			Remarks (Log)	* Crossing Rec. Bedding
			From	To	Feet		
June 29/60	70	70	0	10	10	Overburden	
			10	63	53	Interbedded dark and light chert. Some zones of graphitic slate, from 10-11. Abundant pyrite occurring in veins and veinlets. (20-31, Ground 1'; 17-18, Ground 1')	131°-60°
June 30/60	134	204	63	141	78	Less-normal magnetic cherty Jasper iron formation medium bedding. Interbedded andesitic tuff	
			141	209	68	Normal magnetic cherty Jasper iron formation, medium bedding (ground 2', 212-214, Ground 1', 219-220)	162°-65° 187°-65°
July 1/60	159	263	209	224	15	Interbedded light chert and andesitic tuff	199°-77°
			224	250	26	Normal magnetic cherty Jasper iron formation, medium bedding. Inte-bedded tuff (0-6") beds	211°-70° 225°-70°
							215°-55°

Drilled by Heath & Sherwood

R. C. Partviken

Engineer in Charge

PROPERTY TEMAGAMI - L. O. 3266-0

Hole No. 2-3

Sheet No. 2

Date	Feet Drilled	Total Depth	Section			Remarks (Log)	Rec.	Crossing of Bedding
			From	To	Feet			
			250	286	36	Interbedded light chert and chlorite Andesitic tuff. Cherty iron formation 277'-278. (251-253, Ground 2'; 259-261, Ground 2'; 263-269, Ground 6'; 278-279, Ground 1')		
July 2/60	110	173	286	372	86	Andesitic tuff, light grey		
			372	443	71	Lean-normal magnetic cherty iron formation, medium banding. Interbedded andesite tuff (0-6")		
			443	461	18	Andesite tuff		
			461	470	9	Lean magnetic cherty iron formation medium banding Interbedded tuff		
July 3/60	10	183	470	483	13	Andesite pyroclastic		
End of Hole								
Inclination Tests								
						Footage	True I.	Actual I.
						200'	50°	46°
						400'	43°	39°

R. C. Hartviksen

Engineer in Charge

DIAMOND DRILL RECORD

Hole No. 74

PROPERTY TEMAGAMI - L.O. 3266-C

Sheet No. 1

Location: Claim No. T 43698  
 Lat. D:10 N  
 Dep. Line 52+00' Base Line "B"

Elevation of Collar \_\_\_\_\_  
 Datum \_\_\_\_\_

Direction at Start: Bearing S22°30'E  
 Dip 15°

Started July 7, 1960  
 Completed July 11, 1960  
 Ultimate Depth 383'  
 Proposed Depth 420'

Date	Feet Drilled	Total Depth	Section			Remarks (Log)	% Rec.	Crossing Bedding
			From	To	Feet			
July 7/60	50	50	0	8	8	Overburden		
			8	14	6	Crystalline slate, abundant pyrite plus chert (12'14', Ground 2')		
			14	19	5	Chert, white and buff, plus chloritic material (19-20, from 21')		
			19	26		Interbedded tuff and chert, weakly magnetic		
July 8/60	18	68	26	121	95	Normal magnetic cherty Jasper iron formation, medium banded. Interbedded Tuff. Fractured zone 50-52 (Tuff and chert 58-61)		65°-70°
July 9/60	117	185						90°-63°
			121	138	17	Lean-normal magnetic cherty iron formation, medium banding. Interbedded tuff (0-6")		110°-68°
			138	156	18	Andesite tuff, minor bands of iron formation		132°-60°
								153°-65°

Drilled by Heath F. Sherwood

R. C. Hartviksen  
 Engineer in Charge

PROPERTY TEMAGANT - L.O. 3266-0

Hole No. R-4

Sheet No. 2

Date	Feet Drilled	Total Depth	Section			Remarks (Log)	Rec.	Crossing of Banding
			From	To	Feet			
			156	160	4	Interbedded white chert and tuff, medium banding		158°-60°
July 10/60	168	353	160	193	33	Normal magnetic cherty iron formation, medium banding		
						Interbedded tuff (0-6")		
			193	223	30	Interbedded tuff and white and dark chert		
						Iron formation at 213-214		
			223	308	85	Andesite tuff, light green		
			308	328	20	Normal magnetic cherty iron formation medium banding		
			328	335	7	Interbedded tuff and chert		
July 11/60	30	363	335	383	48	Tuff, light yellow, quartz eyes		
						End of Hole		
						Inclination Tests		
						Footage	Stch I	Actual I
						200'	47°	43.5°
						380'	44°	41.5°

R. C. Hartviksen

Engineer in Charge

DIAMOND DRILL RECORD

Hole No. R-5

PROPERTY TEMAGAMI - L.O. 3266-C

Sheet No. 1

Location: Claim No. T 43698  
 Lat. 0+15 N  
 Dep. Line 18+00' Base Line "B"

Started July 13, 1960  
 Completed July 15, 1960  
 Ultimate Depth 101'  
 Proposed Depth 100'

Elevation of Collar \_\_\_\_\_  
 Datum \_\_\_\_\_  
 Bearing S 22° 30' E  
 Direction at Start: Dip -15°

Date	Feet Drilled	Total Depth	Section			Remarks (Log)	Rec.	Crossing Bedding
			From	To	Feet			
July 13/60	121	121	0	11	11	Overburden		
			11	32	18	Light chert and graphitic slate, pyritiferous zone		
			32	119	87	Interbedded light and dark and buff chert; minor interbedded tuff (Ground 32-33, 45-49)		55'-65° 75'-80° 110'-65°
July 14/60	191	312	119	212	123	Normal magnetic cherty iron formation medium banding Interbedded tuff (Ground 158'-159')		130'-65° 161'-55°
			212	261	19	Andesite Tuff, with minor 6" bands of iron formation at 255' and 258'		239'-70°
			261	292	31	Normal magnetic cherty iron formation medium banding Interbedded tuff (0-6"). Fracture zone from 276-278 containing vein quartz and pyrite		270'-70°
			292	295	3	Interbedded tuff and light chert		295'-70°

Drilled by Heath P. Sherwood

R. C. Hartviksen  
 Engineer in Charge



PROPERTY TEMAGAMI - L.D. 3266-G

Hole No. B-5

Sheet No. 2

Date	Feet Drilled	Total Depth	Section			Remarks (Log)	% Rec.	Crossing Bedding
			From	To	Feet			
July 15/60	89	401	295	339	44	Andesite Tuff		
			339	365	26	Normal magnetic cherty iron formation medium banding		
						Interbedded tuff (2-6") minor carbonate		365° - 70°
			365	384	19	Interbedded tuff and chert		
						(Ground 364-365, 366-368, 376-377)		
			384	401	17	Wheylite tuff, light yellow		
						(Ground, 391-393, 394-397)		
						Inclination Tests		
						Footage	High L	Actual L
						200'	45°	41.5°
						400'	43°	38.5°

R. C. Hartviksen

Engineer in Charge

DIAMOND DRILL RECORD

Hole No. 1-6

PROPERTY

STRATHGAMY MINES INC.

Sheet No. 1

Location: Claim No. Th7248  
 Lat. 350' West of 22nd South  
 Dep. Line O, H B Baseline  
 Elevation of Collar Tomayasi Lake level  
 Datum

CANATEENAH L.O. 3266 G

Started Mar. 1, 1961.  
 Completed Mar. 5, 1961.  
 Ultimate Depth 600'  
 Proposed Depth 800'

Direction at Start:

Bearing N 22° 30' W

Dip 45

Date	Feet Drilled	Total Depth	Section			Remarks (log)	Core Recovery	Foliation Inclination
			From	To	Feet			
Mar. 1	107	107	0	2	2	Casings. Rock has a dip of 85° north in andesite agglomerate.		201-72° 381-60° 531-65°
			2	154	152	Andesite agglomerate with tuff beds 1/8" - 1/4" elongated pebbles. 68-71.75 short sections of oxidized rock (carbonate rusted?). 105-125 pink calcite in bands and in nuggets. (?) bedding (normal to core axis is 0)		901-40° 111-60° 131-55° 1621-55°
Mar. 2	153	260	154	544	400	Andesite, fine bedded tuffs. 154-195 abundant pink calcite in bands parallel to beds.		
Mar. 3	220	480				176, 214-216 reddish coloured bands; oxidation of iron? 227-245 blocky rock, 4' of rock ground. 250-305 continuation		

Drilled by Boyles Bros. (Noranda)

Gerald Harker, P. Eng.

Engineer in Charge

Date	Feet Drilled	Total Depth	Section			Remarks (Log)	Core Recovery	Foliation Inclination
			From	To	Feet			
						in bedding; calcite in bands parallel to beds. 305-415 calcite on fractures, generally at 30°.		162'-55° 191'-55° 206'-55° 217'-40° 232'-40° 242'-60° 311'-60° 333'-65° 352'-55°
Mar. 4	201	681				477-480 well bedded gray tuff, (rhyolite?) 503-532 quartz and calcite zones, veins & Beddings		365'-55° 402'-60° 425'-55° 470'-55°
Mar. 5	119	800	554	571	17	Rhyolite tuff, pale green-gray, massive appearance, obscure bedding.		450'-60° 465'-60° 480'-50° 493'-40°
			571	671	100	Andesite tuff, medium green, prominent bedding.		517'-50° 523'-50°
			671	699	28	Andesite tuff, medium green-gray, with 1/8" diameter siderite rhombs (671-687), 1/8" diameter fragments in beds. Pale green-gray, many, quartz eyes (687-699) - rhyolite?		539'-45° 545'-50° 557'-45° 562'-45° 568'-45° 578'-45°
						Beddings		591'-45° 612'-45° 627'-45°
			699	715	16	Andesite tuff with soft, black, shale beds which are 1/8 - 1" thick		637'-45° 646'-45° 652'-45°

Gerald Barker, P. Eng.  
Engineer in Charge

Date	Feet Drilled	Total Depth	Section			Remarks (Log)	Core Recovery	Foliation Inclination
			From	To	Feet			
						Bedding:		675°-25° 680°-25° 25°
			715	792	77	Hyalite tuff, pale yellow-green, waxy, few quartz eyes, well bedded. Bedding:		726°-25° 736°-25° 750°-25°
						Pyrite, small masses (1/2") along bedding planes. at 731, 747, 760, 762.		760°-25° 790°-35°
						Agglomerate at 754-757.		
			792	800	8	Andesite tuff, darker green than above, quartz vein.		
				800		End of Hole.		

DEP TESTS

2001  
6001  
8001  
8001

MEASURED

45  
30  
20  
6

CORRECTED ANGLE TO SURFACE

41  
27  
18  
5

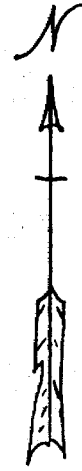
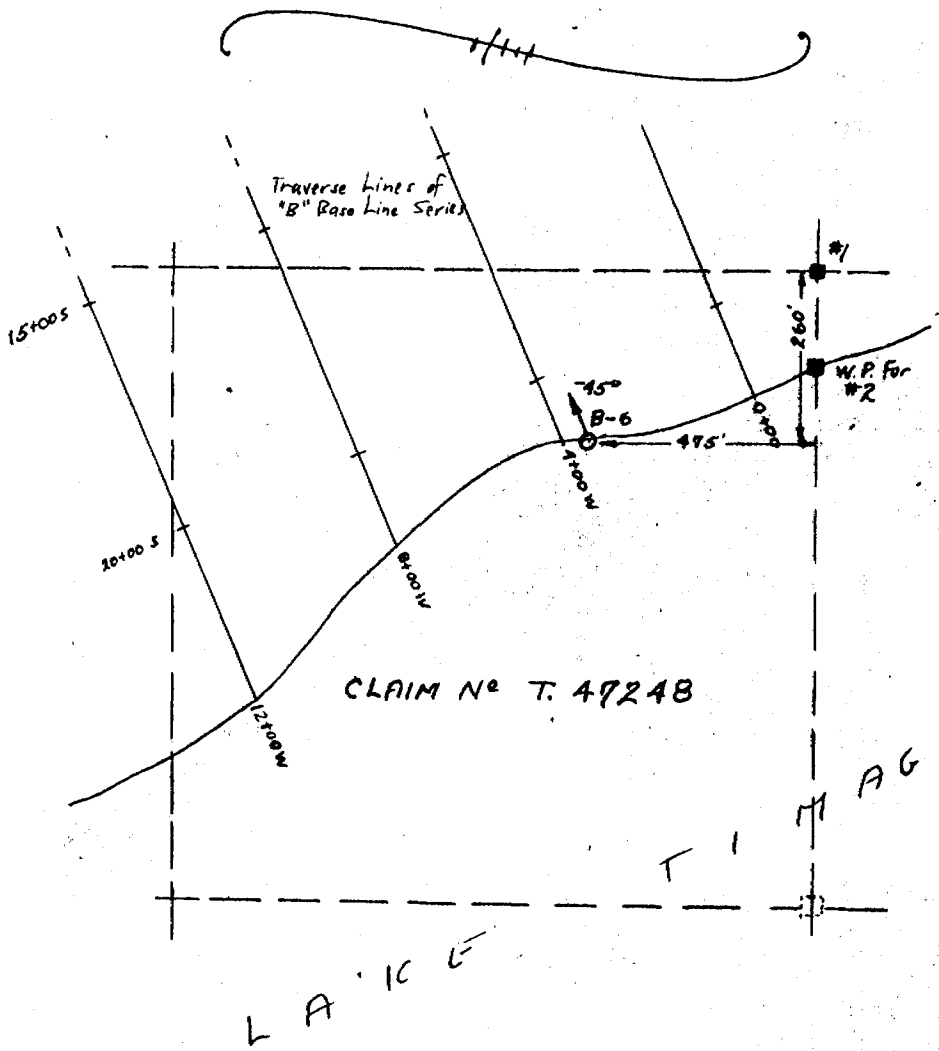
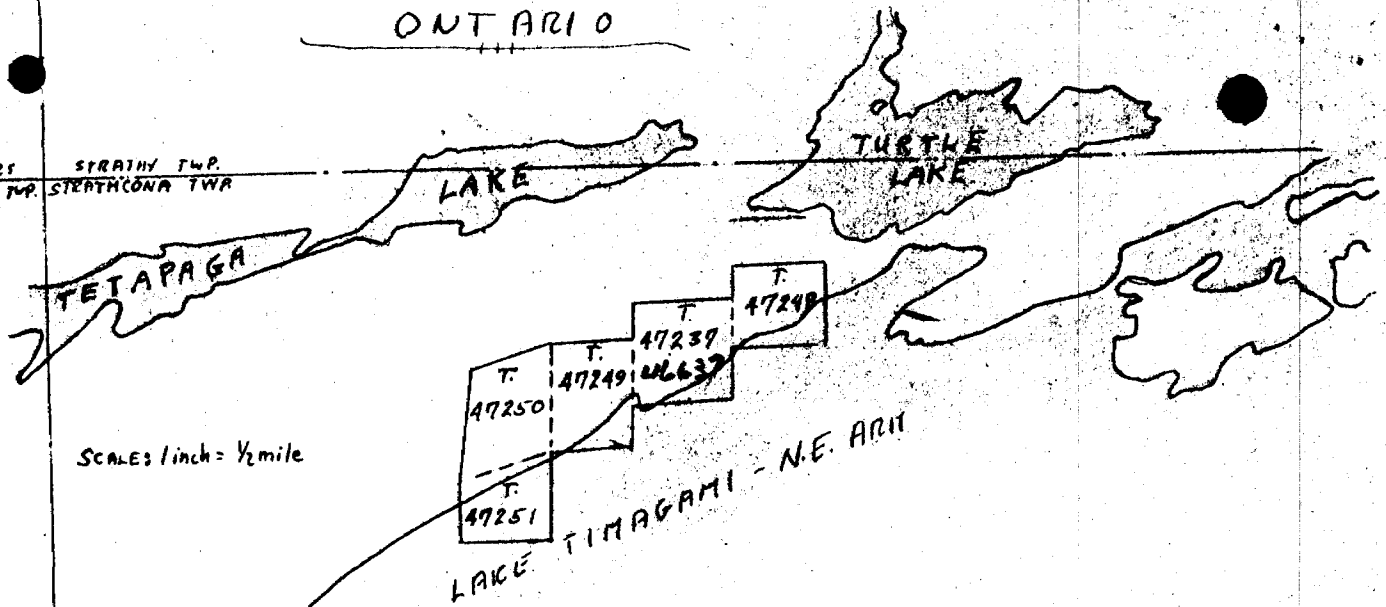
Engineer in Charge

Gerald Barker, P. Eng.

TIMISKAMING MINING DIVISION  
ONTARIO

N

CHAMBERS STRATHY TWP.  
B RIGGS TWP. STRATHCONA TWP



SCALE: 1 inch = 400 Feet

Strathgami Mines Inc.  
G. W. Gindoff  
March 17, 1961

DIAMOND DRILL RECORD

Hole No. B-2

PROPERTY

STRATTON MINE

Sheet No. 1

VOYAGER L.O. 3298 C

Location: Claim No. T 44702

Lat. 150' N

Dep. Line 72 + 00 W, NRP baseline.

Elevation of Collar

Datum

Bearing S. 22° 30' E

Direction at Start:

Dip 45°

Started March 4, 1961

Completed March 6, 1961

Ultimate Depth 320'

Proposed Depth 250'

Date	Feet Drilled	Total Depth	Section			Remarks (log)	Core Recovery	Foliation Inclination
			From	To	Feet			
			0	5	5	Casing		
Mar. 4	17	17	5	47	42	Slate, black, granitic with pyrite and calcite.		20°-30° 35°-45°
Mar. 5	24	111				angular pebbles of chert, some pyrite concretions with radial crystallization and concentric banding of iron oxides.		
			47	65	18	Andesite tuff and interbedded chert; brecciated. 56°-65° local magnetic bands.		
Mar. 6	138	249	65	187	122	Normal Magnetic (cherty) Iron Formation 80°-88° 15% pale yellow bands (carb. silicate chert?) 92°-187° Andesite tuff with quartz eyes, 93°-187° Jasperitic 110°-187° locally, 1"-2" bands of dark		85°-110° 92°-100° 17°-30° 122°-300° 131°-35°

Drilled by Boyles Bros. (Noranda)

Gerald Barker, P. Eng.  
Engineer in Charge

PROPERTY

SETUPATHARANI MINES

Hole No. 42

Sheet No. 1

Date	Feet Drilled	Total Depth	Section			Remarks (Log)	Core Recovery	Foliation Inclination
			From	To	Feet			
						green mineral (neilomalana?).		118'-135'
						150'-170' bands of dark green mineral;		118'-135'
						15% of rock.		163'-170'
						77'-97' contorted and broken L.P. with chert		170'-180'
						(quartz?) filling fractures with		180'-200'
						disseminated pyrite.		200'-210'
			187	223	36	Lean Magnetic Cherty Iron Formation: interbedded		210'-220'
						with pale green (andesite tuff?) and pale		220'-230'
						yellow (carb.-sil.-chert) beds.		230'-240'
						204'-223' Jaegeritic		240'-250'
						190'-204' Hyalite tuff with quartz veins,		250'-260'
						216'-217' greyish, no bedding.		260'-270'
						219'-221' as 216'-217' with silicate beds.		270'-280'
			203	244.5	21.5	Hyalite tuff, pale grey colour		280'-290'
						231'-232' Andesite tuff with chert beds.		290'-300'
			244.5	255	10.5	Andesite tuff and chert beds; few magnetic bands.		300'-310'
Mar. 7	71	320	255	317.5	62.5	Hyalite tuff, yellow-grey, waxy.		310'-320'

Gerald Barker, A. Eng.  
Engineer in Charge

PROPERTY STRATHGAMI MINES

Hole No. 347

Sheet No. 2

Date	Feet Drilled	Total Depth	Section			Remarks (Log)	Core Recovery	Foliation Inclination
			From	To	Feet			
						257'-259' Andesite tuff bands.		
						268'-293' Rhyolite tuff with 1/8" diameter white and dark green fragments; pale grey matrix.		
						293'-317' Rhyolite agglomerate 1/8" - 1/2" diameter white and dark green fragments pale green matrix. Tuff grades to agglomerate. Scattered bits of pyrite in rock.		
			317.5	320	2.5	Andesite tuff dark green, and white chert bands.		
						DIP TEST		
			200'	MEAS. 11'	CORE 11'			

Gerald Barker, P. Eng.  
Engineer in Charge



DIAMOND DRILL RECORD

Hole No. 1

PROPERTY

STRATHGAM I. M. DRES

Sheet No. 1

Location: Claim No. T 43698

Lat. 50' N

Dep. Line 5600 W, Baseline B

Elevation of Collar

Datum N 22° 30' E

Bearing 45°

Direction at Start:

Dip

CANATEENTH, L.O. 3766-C

Started Mar. 9, 1961

Completed Mar. 11, 1961

Ultimate Depth 248

Proposed Depth 300

Date	Feet Drilled	Total Depth	Section			Remarks (log)	Core Recovery	Elevation
			From	To	Feet			
Mar. 9	109	109	0	21		Casing in a swamp		281-300
Mar. 10	132	241	21	35	15	Chert Iron Fm. white chert, Andesite Tuff bands, pyrite throughout chert. 32'-36'		281-270
Mar. 11	7	248				predominantly andesite tuff-- dark green		270-260
			36	97	61	Lean to normal, Magnetite Chert Iron Fm. medium banded, magnetite, white chert, pale green rock (andesite?) (15-20%). Magnetite fractured, chert and green rock fill fractures. 36'-46', 75'-90' minor pyrite. 50'-73' jasperitic--purple chert. 60'-61' Hyalite Tuff.		260-250
			97	159	62	Normal, Magnetite Chert Jasper Iron Fm. -- Medium		250-248

Drilled by

Boyles Bros. (Noranda)

Gerald Parker, P. Eng.

Engineer in Charge

Date	Feet Drilled	Total Depth	Section			Remarks (Log)	Core Recovery	Foliation Inclination
			From	To	Feet			
						banded. Locally contorted. 107'-109'		107'-21° 108'-20°
						ground core 120.5'-121.3' Andesite tuff		120'-20° 121'-11° 122'-20° 123'-25° 124'-20° 125'-20°
						with pyrite. 127'-141' dark green beds		
						(10%) silicates? 141'-150' dark green		
						beds (20%) silicates		
						Dark green beds have very small magnetite		
						crystals. 141'-150' Lean, Magnetite.		
						Chert Jasper Iron Fm.		
			159	185	26	Lean, Magnetite Chert Iron Fm. and interbedded		
						Andesite Tuff (25-30%) — medium banded.		
						tuff is fine grained, green rock.		
						180'-181' Andesite tuff with small		
						fragments		
			185	196	11	Mixed chert sections of Andesite Tuff with white		
						chert and gray Rhyolite Tuff.		
			196	236	40	Normal Magnetite Chert Iron Fm and interbedded		
						Andesite Tuff with 1/8" bands in chert		

Engineer in Charge  
Gerald Barker, M. Eng.

PROPERTY STRATHESAMI MINES

Hole No. 11-1

Sheet No. 3

Date	Feet Drilled	Total Depth	Section			Remarks (Log)	Core Recovery	Orientation Inclination
			From	To	Feet			
						and 4-8 bands with pyrite. Tuff is fine grained, green rock and 30-40% of cuff.		
			136	141	5	Andesite Tuff and white clert,		
			241	248	7	Andesite Tuff gray-green colour, coarser grained than above.		
				248		End of Hole.		
			DIP TEST					
			200'	MEASURED 43	CORRECTED 30'			

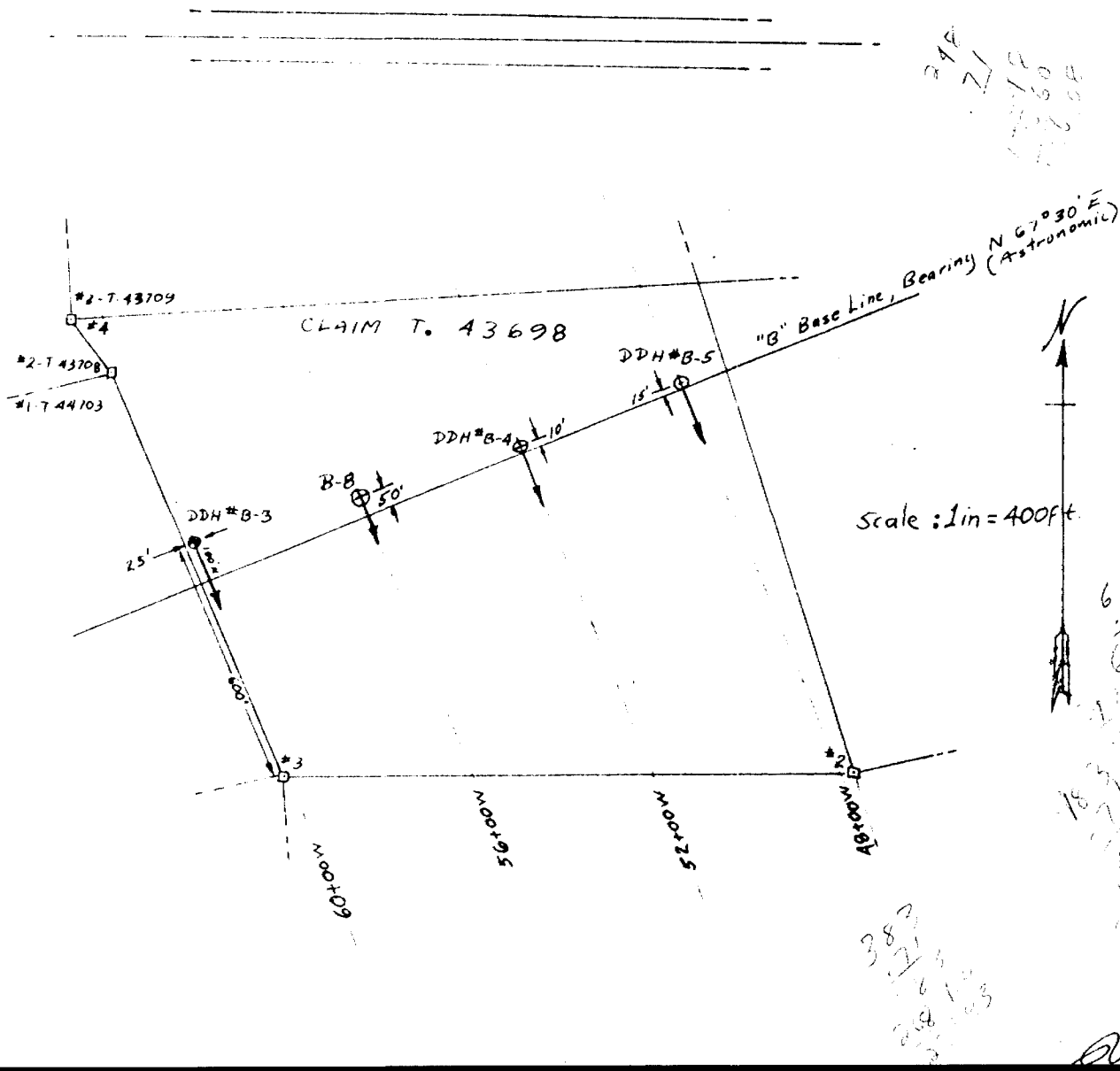
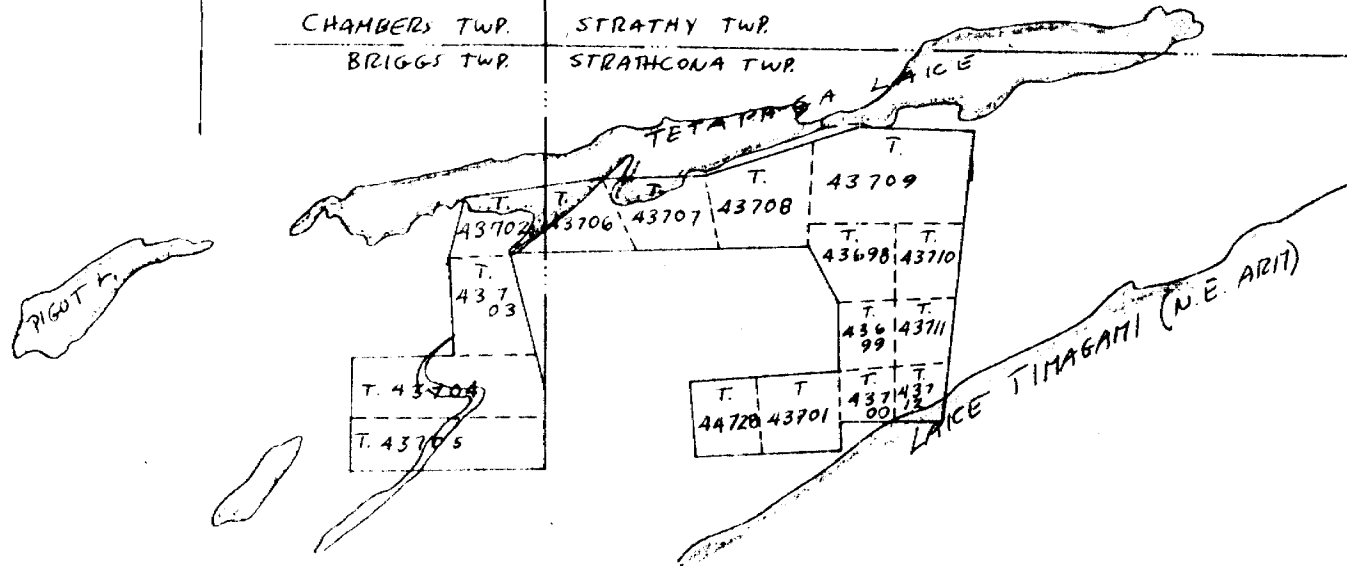
Engineer in Charge

Gerald Barker, P. Eng.

# TIMISKAMING MINING DIVISION ONTARIO

74369

Scale: 1 in = 1/2 mi



# DIAMOND DRILL RECORD

Hole No. 37

PROPERTY SPRATHAGAMI MINES

Sheet No. 1

Location: Claim No. W. 41703  
 Lat. 40° 16'  
 Dep. Dip 68° O. W., Incline 7°

VOYAGER, L.S. 3298-c

Started March 2, 1961  
 Completed March 14, 1961  
 Ultimate Depth 223'  
 Proposed Depth 200'

Elevation of Collar \_\_\_\_\_  
 Datum \_\_\_\_\_

Bearing 272° 30'

Direction at Start: \_\_\_\_\_  
 Dip 41°

Date	Feet Drilled	Total Depth	Section			Remarks (Log)	Core Recovery	Elevation
			From	To	Feet			
Mar.	7	7	0	7	5	Casing in Mag. Cherty Iron Formation.		191-300
" 10	120	228	7	127	120	Lean to Normal, Magnetite Cherty Iron Formation and interbedded Andesite Tuff - medium banded. 20% tuff; broken magnetite beds are chert sealed.		211-230
						22'-25' broken core		481-300
			46	81	35	Normal to rich, magnetite Chert Jasper Iron Fr. - Medium banded.		581-300
						76'-77' Andesite Tuff, coarse grained		681-300
			81	117	36	Normal, Magnetite Chert Jasper Iron Fr. - medium banded. Bands of green rock (10%) with crystals (silicates?), some pyrite		781-300
								881-400
								971-250
								1071-250
								1171-225
								1271-250
								1371-300
								1471-250
								1571-300
								1671-250
								1761-250
								1891-400

Drilled by Boyles Iron. (Noranda)

Gerald Barker, P. Eng.  
 Engineer in Charge

PROPERTY ...

Hole No. ...

Sheet No. ...

Date	Feet Drilled	Total Depth	Section			Remarks (Log)	Core Recovery	Foliation Inclination
			From	To	Feet			
						with the bands: bands are more dominant in chert rich rather than Jasper rich sections. Few 2"-3" bands of course grained andesite tuff.		1921-5 2071-5 2101-3
			117	139.5	22.5	Lean, Magnetite Chert Iron Fm. and Andesite Tuff (30%). Pyrite in tuff less than 1%; few darker green bands (silicated?).		
			139.5	160	20.5	128.5'-129.5' Rhyolite tuff with quartz. Andesite Tuff and Interbedded white chert beds (20%); few magnetic beds, and pale yellow beds (carbonate?) adjacent to the chert.		
			160	199	39	Lean Magnetic Chert Iron Fm. with pale yellow beds (10%) and andesite Tuff beds (10%) interbedded. Locally bedding is contorted. 186'-189' Andesite Tuff. 190'-196' fractured iron formation--		

Engineer in Charge

Copyright 1950, ...

PROPERTY

STRATIGAMI MINES

Hole No. R-9

Sheet No. 3

Date	Feet Drilled	Total Depth	Section			Remarks (log)	Core Recovery	Foliation Inclination
			From	To	Feet			
						chert healed.		
			199	228	29	Andesite Tuff - dark green, well banded with white chert bands (1/4" - 12" thick).		
				228		End of Hole.		
			DIP TEST					
			2001 measured $45^{\circ}$ corrected $41^{\circ}$					

Engineer in Charge

Gerald Parker, C. Eng.

DIAMOND DRILL RECORD

Hole No. B-10

PROPERTY STRATHAGAMI MINES  
CANATEBETH, L.O. 3266-C 5M2

Sheet No. 1

Location: Claim No. T 43698  
 Lat. 0° 85' N or 90° N  
 Dep. Line 52+00' W, Base Line "B"

Started March 13, 1961  
 Completed March 15, 1961  
 Ultimate Depth 342'  
 Proposed Depth 350'

Elevation of Collar \_\_\_\_\_  
 Datum \_\_\_\_\_  
 Bearing S22°30'E  
 Direction at Start: Dip -60°

Date	Feet Drilled	Total Depth	Section			Remarks (Log)	Core Recovery	Foliation Inclination
			From	To	Feet			
Mar. 13	120	120	0	44	44	Casing, 20' of swamp, 24' glacial moraine		46'-35° 60'-30°
" 14	191	311	44	68.5	24.5	Andesite Tuff, pale green, well bedded. 58'-63'	92%	66'-35° 76'-45°
" 15	31	342				Thin black slate beds in tuff.		79'-40° 89'-35°
						63'-68.5' Andesite pyroclastic with pyrite fragments 1/8".	94%	97'-30° 113'-35°
			68.5	102	33.5	Slate, black graphitic with pyrite, in part well banded, in part conglomerate with chert fragments. Pyrite in beds and nodules. 74'-76' ground core		122'-40° 129'-35° 137'-30° 148'-25° 164'-40° 169'-35° 172'-30°
			102	110	8	Chert and Andesite Tuff with a conglomerate of yellow rock fragments in white chert.		182'-35° 192'-35° 195'-30° 205'-30°
			110	122	12	Lean Magnetite Cherty Iron Fm. medium banded;		215'-30°

Drilled by Boyles Bros. (Noranda)

122-124 lost core

Gerald Barker, P. Eng.  
 Engineer in Charge



Date	Feet Drilled	Total Depth	Section			Remarks (Log)	Core Recovery	Foliation Inclination
			From	To	Feet			
						20% pale green beds--andesite. Pyrite in green beds and in fractures through Iron Fm.	87%	225'-30° 238'-30° 248'-30° 258'-30° 262'-35°
			122	137	15	Normal Magnetite Cherty Iron Fm. medium banded; 15% green beds.		268'-40° 278'-30° 288'-30°
			137	194	57	Normal, Magnetite Cherty Jasper Iron Fm, medium banded; 146'-170' Rich-Normal 153'-159', 170-171' strong pyrite mineralization in fracture in I. Fm and near fractures. 146'-170' quartz filling fractures; poor coring in fractured rock. 170'-194' 10% dark green tuff beds with with magnetite.		302'-30°
			194	219	25	Normal, Magnetite Cherty Iron Fm., medium banded; locally jasperitic; 20% dark green tuff beds with magnetite, 1/2-2" thick; one coarse grained tuff bed 8" thick.		

Engineer in Charge

Gerald Barker, P. Eng.

PROPERTY

STRATHGAMM MINES

Hole No. B-10

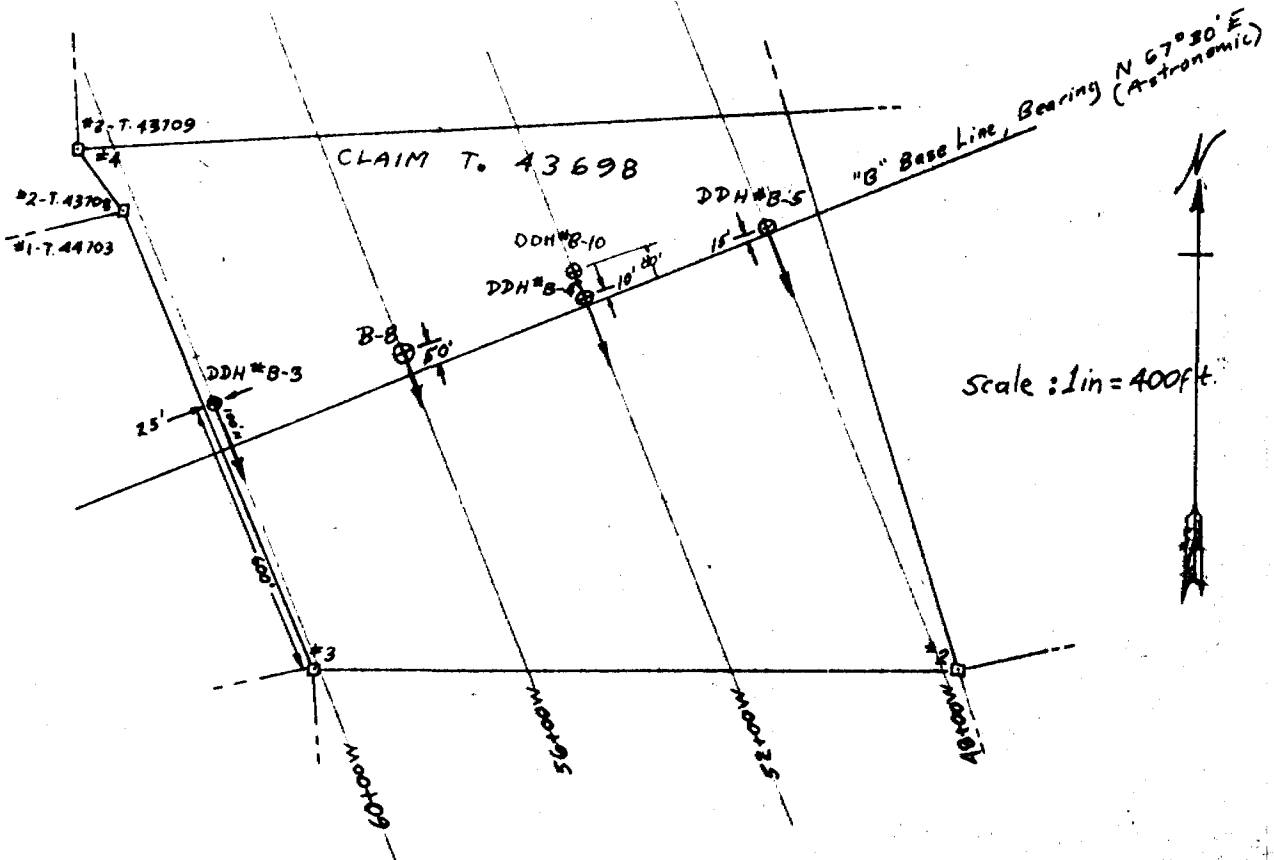
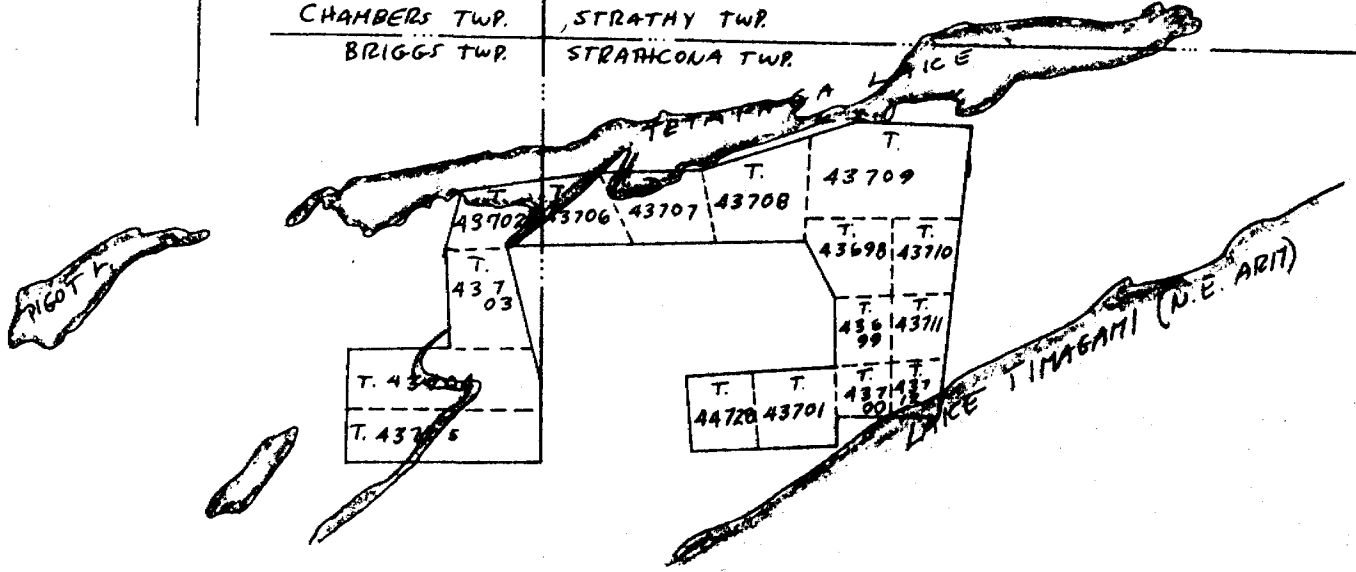
Sheet No. 3

Date	Feet Drilled	Total Depth	Section			Remarks (Log)	Core Recovery	Foliation Inclination
			From	To	Feet			
			219	235	16	Andesite Tuff and Chert 229'-237' 2' core ground	87%	
			235	269	34	Normal, Magnetite Chert Iron Fa., medium banded; 20% Andesite Tuff, some pyrite in tuff.		
			269	295	26	Andesite Tuff with chert beds, well bedded; pyrite in tuff. 283, 289-294 short zones of magnetite chert iron formation in tuff.		
			295	342	47	Andesite Tuff and Agglomerate 295-304 Tuff, fine grained, bedded, 304-342 Agglomerate, unsorted, very fine grained at first, gradually increases in fragment size to 1/8", white fragments in pale green matrix.		
			DIP TEST 200'	Meag. 54	Corrected 50			

Gerald Barker, P. Eng.  
Engineer in Charge

TIMISKAMING MINING DIVISION  
ONTARIO

Scale: 1 in = 1/2 mi



222

DIAMOND DRILL RECORD

Hole No. B-11

PROPERTY STRANAGAMI MINES  
VOYAGER, L.O. 3298-C,

Sheet No. 1

Location: Claim No. T 44703  
Lat. 44° 00' N  
Dep. 044° 00' W, Baseline 12"  
Elevation of Collar \_\_\_\_\_  
Datum \_\_\_\_\_

Started March 13, 1961  
Completed March 14, 1961  
Ultimate Depth 236'  
Proposed Depth 290'

Direction at Start: Bearing S 22° 30' E  
Dip 45°

Date	Feet Drilled	Total Depth	Section			Remarks (Log)	Core Recovery	Elevation
			From	To	Feet			
Mar. 13	7	7	0	7	7	Casing		161-20°
" 13	101	108	7	12	5	Chert and Andesite Tuff-- conglomerate of angular white pebbles in green matrix.		211-20°
" 14	128	236				12" calcite vein		261-20°
			12	40	28	Normal, Magnetite Cherty Iron Pm. medium banded; locally taaperitic.	92%	261-20°
						19'-21' core ground		281-20°
						21'-24.5' andesite tuff		321-20°
						32'-33.5' 20% soft, pale green beds -- andesite tuff?		361-20°
			40	74	34	Lean to Normal Magnetite Cherty Iron Pm. medium banded; 15% pale green beds -- andesite		361-20°

Drilled by Boyles Bros. (Acrona)

Garald Parker, P. Eng.  
Engineer in Charge

PROPERTY

STRATHGAMMI MINES

Hole No. P-11

Sheet No. 2

Date	Feet Drilled	Total Depth	Section			Remarks (Log)	Core Recovery	Foliation Inclination
			From	To	Feet			
						tuff?		208'-20°
						12'-57' 20% pale yellow beds --		218'-20°
						carbonate? 55' quartz vein		227'-20°
						Few pyrite cubes in the green beds.		233'-20°
			74	113	39	Normal Magnetite Cherty Jasper Iron Fm. medium banded; locally contorted, generally uniform, well banded. Few 4" beds of andesite tuff.		
			113	139	26	Normal, Magnetite Chert Jasper Iron Fm. medium banded; 10% pale green beds -- andesite tuff; few dark green beds -- silicate?		
			139	170.5	31.5	Lean to Normal Magnetite Cherty Iron Fm. medium banded; 20% green beds -- andesite tuff?, some are magnetic, others are not.		
						157'-157'15' 30% pyrite in andesite tuff		
						16'-162' rhyolite, pink colour, red		

Gerald Barker, P. Eng.

Engineer in Charge

PROPERTY

STRATHGAMM MINES

Hole No. 11-P

Sheet No. 3

Date	Feet Drilled	Total Depth	Section			Remarks (Log)	Core Recovery	Foliation Inclination
			From	To	Feet			
						feldspar crystals.		
			180.5	189.5	10	Andesite Tuff with white chert beds, pale yellow beds -- carbonate?, and few magnetite beds.		
			189.5	216	35.5	Normal, Magnetite, Chert Iron Fa. medium banded; locally contorted; 10% andesite tuff -- fine grained dark green, with magnetite, and some pyrite, 1" - 10" bands.		
			216	230	14	Andesite Tuff, pale green, fine grained, 216-218 with white chert beds, 228'-230' with white chert beds, 224'-225' rhyolite tuff with quartz eyes, pale grey.		
			230	236	6	Rhyolite tuff with quartz eyes, pale grey. 230-236 broken and ground core.		
				236		End of Hole		

MEASUREMENT

200'

Meas.

17' corrected 430

Engineer in Charge

Gerald Barron, P. Eng.

DIAMOND DRILL RECORD

Hole No. B-12

PROPERTY STRATHGAMI MINES  
CANATEENTH L.O. 3266-C

Sheet No. 1

Location: Claim No. T 43710  
 Lat. 125' S  
 Dep. Line 44+00 W, baseline "B"

Started March 17, 1961  
 Completed March 19, 1961  
 Ultimate Depth 229'  
 Proposed Depth 220'

Elevation of Collar \_\_\_\_\_  
 Datum \_\_\_\_\_  
 Bearing S 22° 30' E  
 Direction at Start:  
 Dip -45°

Casing Pulled.

Date	Feet Drilled	Total Depth	Section			Remarks (Log)	Core Recovery	Foliation Inclination
			From	To	Feet			
Mar. 17	42	42	0	8	8	Casing		10'-30°
" 18	148	190	8	38	30	Normal Magnetite Cherty Jasper Iron Fm. medium banded; 10% dark green, magnetic, Andesite Tuff (1/4-2" bands)		20'-30° 30'-30° 40'-25° 50'-25° 60'-20° 70'-25°
" 19	39	229	38	90	52	Lean-Normal Magnetite Cherty Iron Fm. medium banded; 30% dark green and green-grey bands with pyrite cubes, some dark beds are magnetic. 85-90 20% pale yellow beds (carbonate & chert ?)		80'-25° 90'-20° 100'-25° 110'-20° 121'-25° 133'-25° 141'-20° 150'-20° 160'-20° 170'-20°
			90	121	31	Normal-Rich Magnetite Cherty Jasper Iron Fm, medium banded; locally contorted.		180'-20° 190'-25°

Drilled by Boyles Bros. (Noranda)

Gerald Barker, P. Eng.  
 Engineer in Charge

Date	Feet Drilled	Total Depth	Section			Remarks (Log)	Core Recovery	Foliation Inclination
			From	To	Feet			
			121	160	39	Normal Magnetite Cherty Jasper Iron Fm. medium banded; less jasper than above section; 130-160 10% green, magnetic beds, 1/8-1/2", or grey beds, 2-4" thick. -- Andesite Tuff		200'-15° 210'-25° 223'-25°
			160	181	21	Lean- Normal Magnetite Cherty Iron Fm, medium banded; 2-3% green beds, not magnetic -- Andesite tuff, 171-172 conglomerate with pink pebbles, jasper?		
			181	199	18	Andesite Tuff 181-182, 190-199 interbedded with white chert, pale yellow beds (carbonate-chert), and few magnetite beds.		
			199	215	16	Normal Magnetite Cherty Iron Fm, medium banded; 10% magnetic, green beds-- andesite tuff		

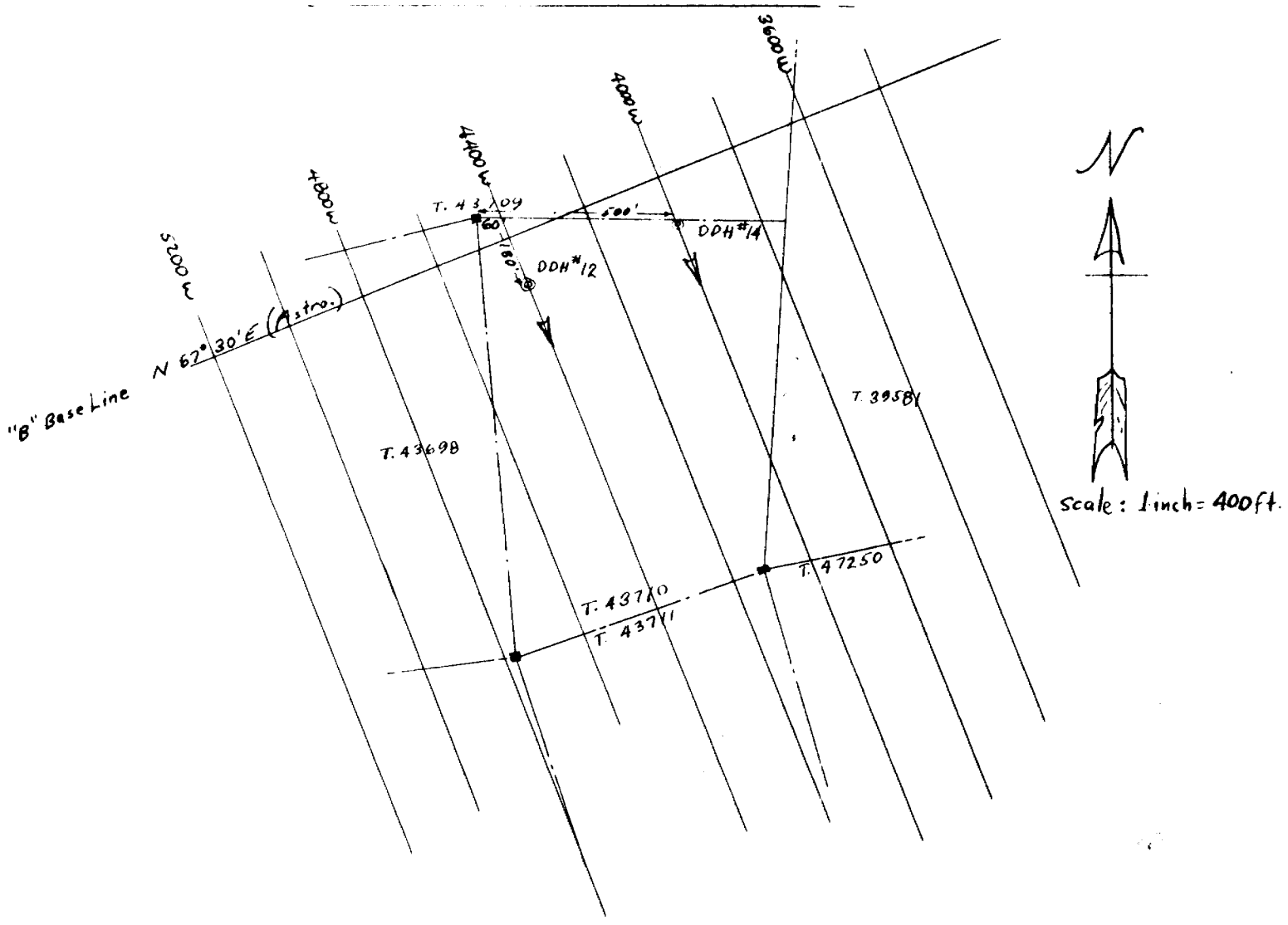
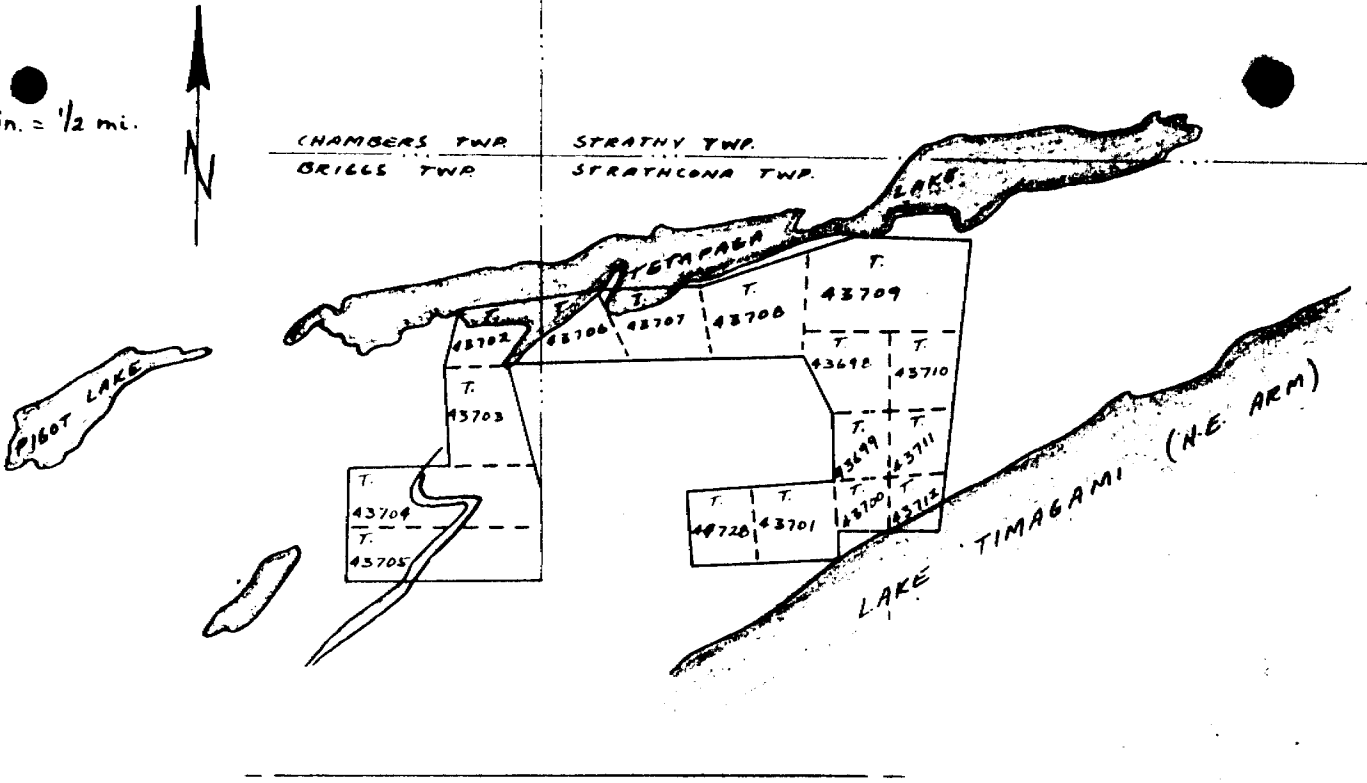
Engineer in Charge  
Gerald Parker, P. Eng.





TIMISKAMING MINING DIVISION  
ONTARIO

Scale: 1 in. = 1/2 mi.



DIAMOND DRILL RECORD

Hole No. B-14

PROPERTY STRAHAGANI MINES INC.

Sheet No. 1

Location: Claim No. T. 43710  
 Lat. 125' S  
 Dep. line 40+00 W., baseline B

CAMPMENT L.O. 3266-C

Started Mar. 20, 1961  
 Completed Mar. 22, 1961  
 Ultimate Depth 197'  
 Proposed Depth 260'

Elevation of Collar  
 Datum

Bearing S 22°

Direction at Start:

Dip -45°

Date	Feet Drilled	Total Depth	Section			Remarks (Log)	Core Recovery	Foliation Inclination
			From	To	Feet			
Mar. 20	68	80	0	16	16	Casings:		30'-35°
21	117	197	16	35	19	White Chert and Andesite Tuff, with pyrite in chert 30'-35' well bedded tuff, chert and pale yellow beds (chert-carbonate?)		40'-35° 50'-25° 60'-25° 70'-30° 80'-25° 90'-25° 100'-20° 107'-30°
			35	42	7	Grey Chert with few magnetite beds; 20% thin green beds (andesite tuff?)		117'-30° 127'-20°
			42	55	13	Lean Magnetite Cherty Iron Fm. medium banded; Andesite Tuff with pyrite cubes; chert-tuff-magnetite: 50-40-10%		145'-20° 155'-20° 165'-20° 175'-30° 185'-25°
						52'-54' white chert and thicker Andesite Tuff beds, similar to 16'-35'.		

Drilled by

Hoyles Bros. (Noranda)

Gerald Barker, P. Eng.

Engineer in Charge

Date	Feet Drilled	Total Depth	Section			Remarks (Log)	Core Recovery	Foliation Inclination
			From	To	Feet			
Mar.-			55	63	8	Normal Magnetite Cherty Jasper Iron Fm, thin bedded; 30% green tuff beds.		
			63	73	10	Normal Magnetite Cherty Iron Fm. medium banded; 30% dark green beds, magnetic, with silicates.		
			73	84	11	Normal Magnetite Cherty Jasper Iron Fm, medium banded, 30% dark green beds, magnetic with silicates; some green beds of Andesite Tuff, magnetic, are 4" thick.		
			84	111	27	Normal-Rich Magnetite Cherty Jasper Iron Fm, medium banded, 5% magnetic, green beds, 1-4" thick; few fractures in rock with pyrite. 108'-111' fractured rock healed, all orientations of fragments. 104'-105', 111'-113' poor recovery	89%	

Gerald Barker, P. Eng.  
Engineer in Charge

Date	Feet Drilled	Total Depth	Section			Remarks (Log)	Core Recovery	Foliation Inclination
			From	To	Feet			
						of core.		
			111	135	24	Normal Magnetite Cherty Iron Fm, medium banded; 40% green beds; many parts are thin bedded green and magnetite beds. 117'-118'.5' pink felsite and white quartz with pyrite -- dike? 123'-135' carbonate rhombs in thicker green beds -- andesite tuff 133'-135' fractured rock, pyrite on fractures.		
			135	170	35	Normal Magnetite Cherty Jasper Iron Fm 135'-143' rock fractured and healed, fragments in all orientations, pyrite along fractures. 143-170 usual well bedded rock, medium banded, with long fractures parallel to core.		

Gerald Barker, P. Eng.  
Engineer in Charge

Date	Feet Drilled	Total Depth	Section			Remarks (Log)	Core Recovery	Foliation Inclination
			From	To	Feet			
			170	197	27	Normal Magnetite Cherty Jasper Iron Fm, medium banded; locally contorted; less jasper than above; 10% green beds, magnetic. 189-197 20% green beds, magnetic, -- andesite tuff. 188' 2" pink felsite and quartz vein.		
					197	End of hole. Bit and shell were burnt in hole; shell from other machine was too large for hole. Hole would have to be reamed to continue drilling. Expected end of iron formation was 222'.		
					DIP TEST 190'	measured 40° corrected 36°		

Gerald Barker, P. Eng.  
Engineer in Charge

DIAMOND DRILL RECORD

Hole No. 1-1  
Sheet No. 1

PROPERTY STRATHGAMMI MINES INCORPORATED

Location: Claim No. T-37987  
Lat. \_\_\_\_\_  
Dep. \_\_\_\_\_  
Elevation of Collar 35° S, 45° W of line 15W  
Datum \_\_\_\_\_

IRSEW L.O. 3296-C

Started July 23, 1961.  
Completed July 25, 1961.  
Ultimate Depth 201  
Proposed Depth \_\_\_\_\_

Direction at Start: Bearing N 00° E  
Dip 45°

Casing Pulled, 118' left in hole.

Date	Feet Drilled	Total Depth	Section			Remarks (Log)	Core Recovery	Foliation Inclination
			From	To	Feet			
July 23	28	28				Assessment drilling on north shore of Tetapaga Lake.		27'-45° 35'-45° 45'-45°
July 24	126	155	0	26	26	Casing		55'-35° 65'-45°
July 25	47	201	26	56	30	Mixed greywacke and slates, dominantly slates. grey and black beds, thick and thin beds respectively. Locally pyrite in rock; 35-40 Mike + aphanitic, grey rock, with chlorite or amphiboles.		85'-40° 101'-40° 120'-35° 140'-35° 150'-45° 156'-40° 170'-45° 176'-45° 186'-45° 199'-50°
			56	117	61	Greywackes and slates, dominantly thick greywacke beds. Zones of thin beds are 2-4" thick. Local pyrite zones.		End.

Drilled by Boyles Bros. (Quebec) Limited.

Gerald Parker, P. Eng.  
Engineer in Charge

Date	Feet Drilled	Total Depth	Section			Remarks (Log)	Core Recovery	Foliation Inclination
			From	To	Feet			
						veins.		
						116-166 pyrrhotite and pyrite 1/2" blebs.		
						180-190 pyrrhotite and pyrite 1/2" blebs.		
						169' calcite vein with pyrite.		
				201		End of Hole		
						Dip Test		
						200' measured 41°, corrected 37 1/2°.		
						Electro-magnetic anomaly or conductor is probably the water seam.		

Gerald Barker, P. Eng.  
Engineer in Charge



DIAMOND DRILL RECORD

Hole No. 1-2

PROPERTY

STRATIAGAMI MINES INCORPORATED

Sheet No. 1

Location: Claim No. T-37987  
 Lat. 62° 18'  
 Dep. line 9 W  
 Elevation of Collar \_\_\_\_\_  
 Datum \_\_\_\_\_

**IRSEN SM-10**

Started \_\_\_\_\_  
 Completed July 26, 1961  
 Ultimate Depth July 28, 1961.  
 Proposed Depth 201

Bearing \_\_\_\_\_  
 Direction at Start: \_\_\_\_\_  
 Dip N 00°  
50°

**Casing Pulled**

Date	Feet Drilled	Total Depth	Section			Remarks (Log)
			From	To	Feet	
July 26	35	35	0	30	30	Casing 32°-55°
July 27	123	158	30	46.5	16.5	Mixed slate and greywacke; thin, black beds, and thicker, grey beds, respectively; with pyrite and pyrrhotite scattered in beds. 43°-60 56°-55 67°-50 77°-50
July 28	43	301	46.5	55	8.5	Rhyolite, dike?, hard, grey, aphanitic, with disseminated pyrite, few quartz eyes; calcite veins cutting. 106°-35 112°-50 125°-40 131°-45 140°-45 150°-45
			55	76.5	21.5	Dominantly black slates, some greywackes. 159°-45 160°-45
			76.5	82	5.5	Rhyolite dike as 46.5-55. 179°-45 188°-35
			82	99	17	Dominantly black slates, some greywackes, pyrite 200°-35 end, and pyrite and pyrrhotite scattered

Drilled by Boyles Bros. (Quebec) Limited

Gerald Parker, P. Eng.  
 Engineer in Charge

Date	Feet Drilled	Total Depth	Section			Remarks (Log)	Core Recovery	Foliation Inclination
			From	To	Feet			
						throughout.		
			99	123	24	Black slates, abundant bedding plane partings, some with graphite. Electrical conductor?		
			123	174	51	Mixed slates and greywackes, locally pyrite cubes. 124', 172' 1/2" calcite veins.		
			174	192	18	Dominantly greywacke, some slates; 178' 1/2" quartz vein. 181', 185' calcite vein with pyrite.		
			192	199	7	Phyolite dikes? hard grey, aphanitic, 195.5' 196 quartz vein with pyrite.		
			199	201	2	Mixed greywackes and slates.		
				201		End of Hole.		
						*Possible electrical conductor at 99'-123'.		
						Some water lost between 40 and 60.		

Water seen at 160' flowing water.

Dip Test 200' measured  $32^{\circ}$ , corrected  $29^{\circ}$

Gerald Barker, P. Eng.  
Engineer in Charge

PROPERTY

STRATHGAMIE MINES INCORPORATED

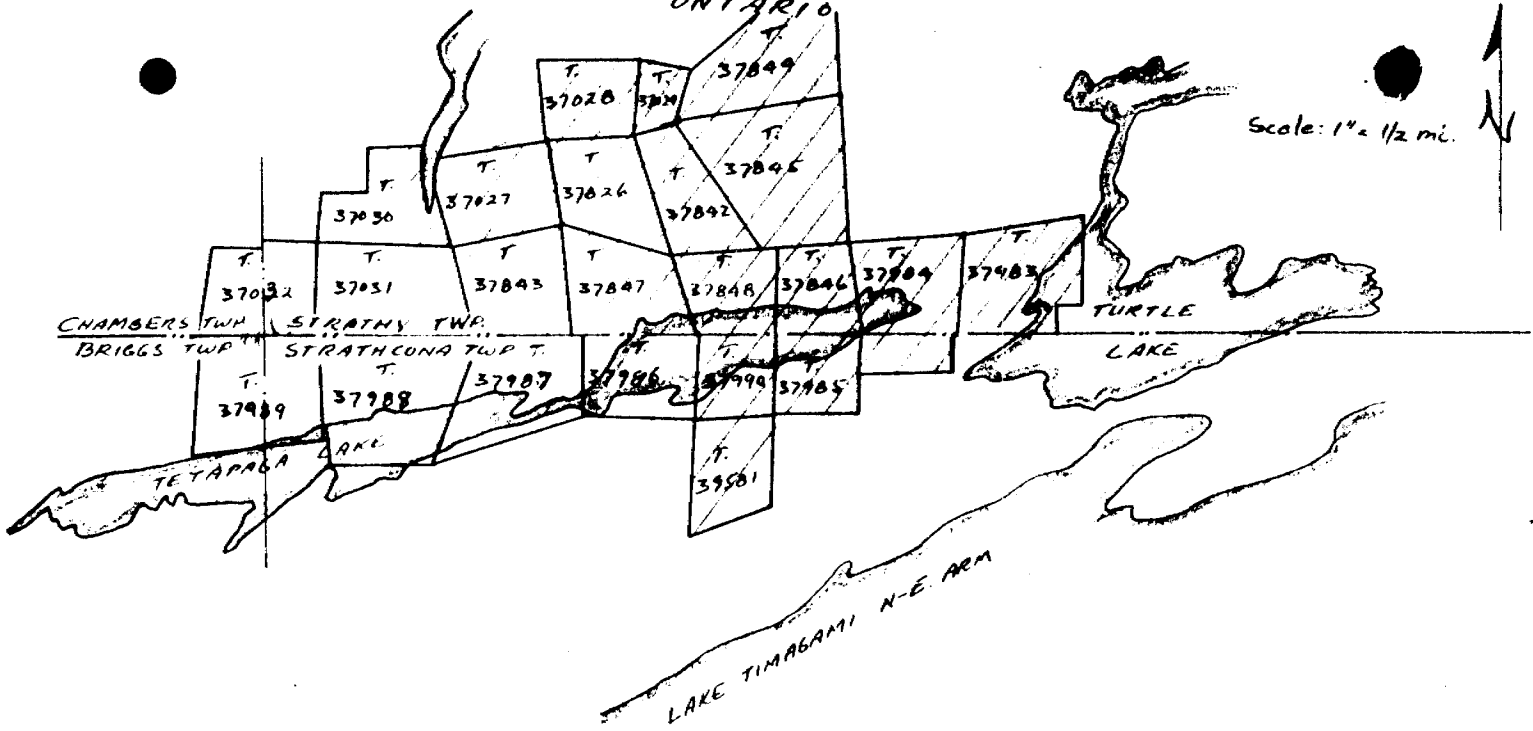
Hole No. D-2Sheet No. 2

Date	Feet Drilled	Total Depth	Section			Remarks (Log)	Core Recovery	Foliation Inclination
			From	To	Feet			
						<p>CURBS, PRIMARY PYRITE.</p> <p>81'-85' thin beds of slate.</p> <p>90' quartz vein with pyrite and pyrrhotite.</p> <p>100' water seeps—flowing.</p> <p>massive rock except for 2" of washers of core, one with pyrite on coated surface.</p> <p>113' several calcite veins.</p> <p>120' pyrite and pyrrhotite along beds. 127'-136', 186'-189' local pyrite and pyrrhotite blebs in rock.</p>		
			127	201	74	<p>Mixed greywacke and slate, or thick and thin beds. 127'-136', local pyrite and pyrrhotite blebs in rock. 135'-140' thin slate beds. 146' quartz</p>		

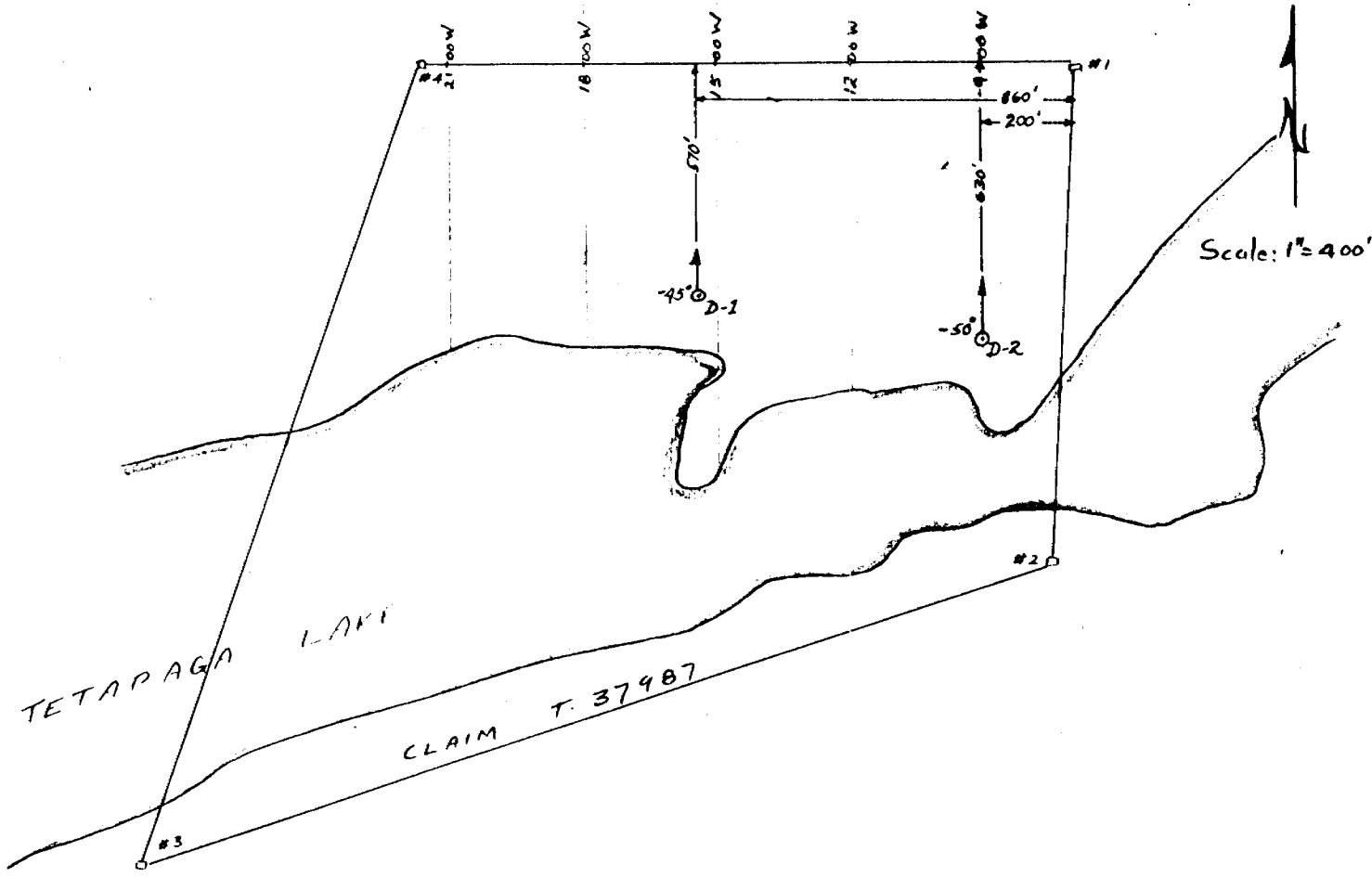
Gerald Barker, P. Eng.  
Engineer in Charge

TIMISKAMING MINING DIVISION

ONTARIO



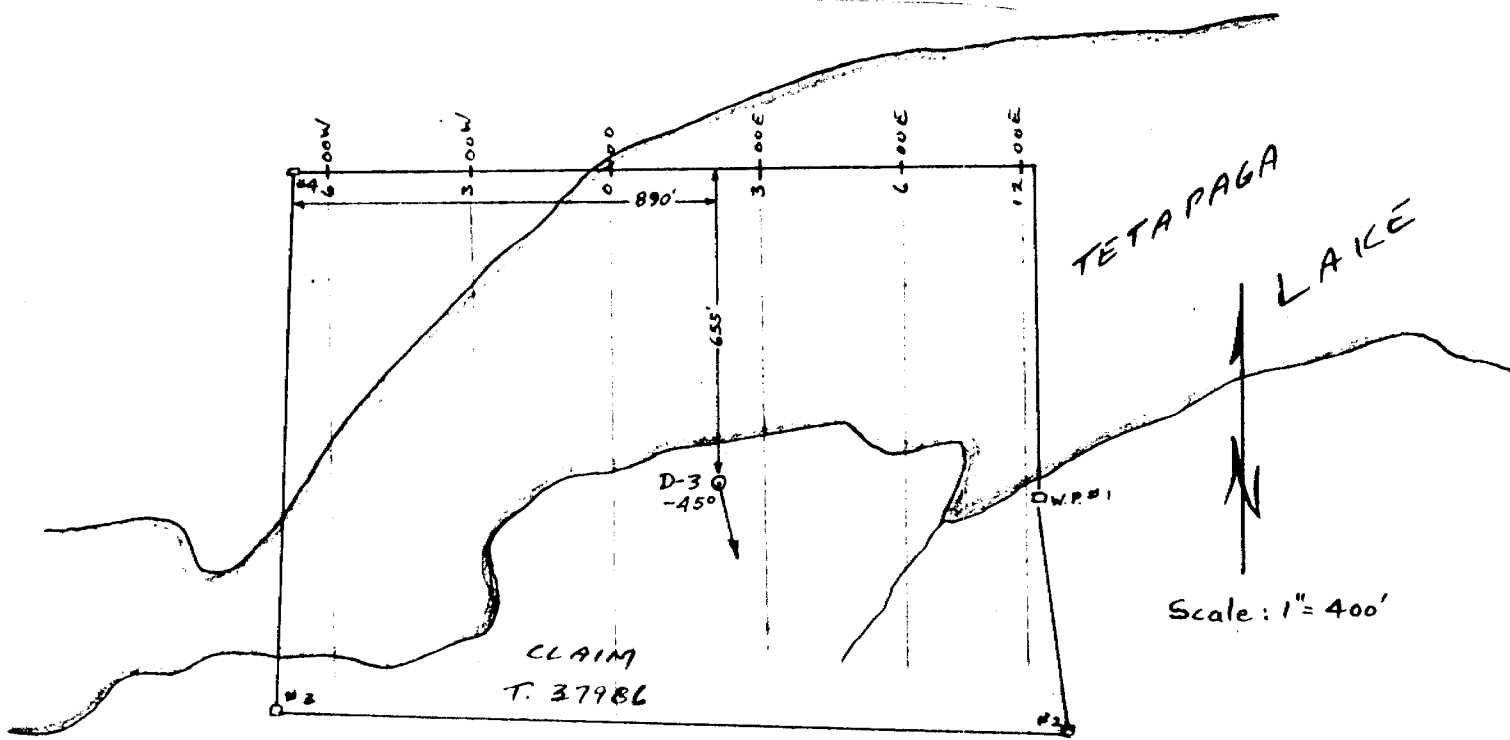
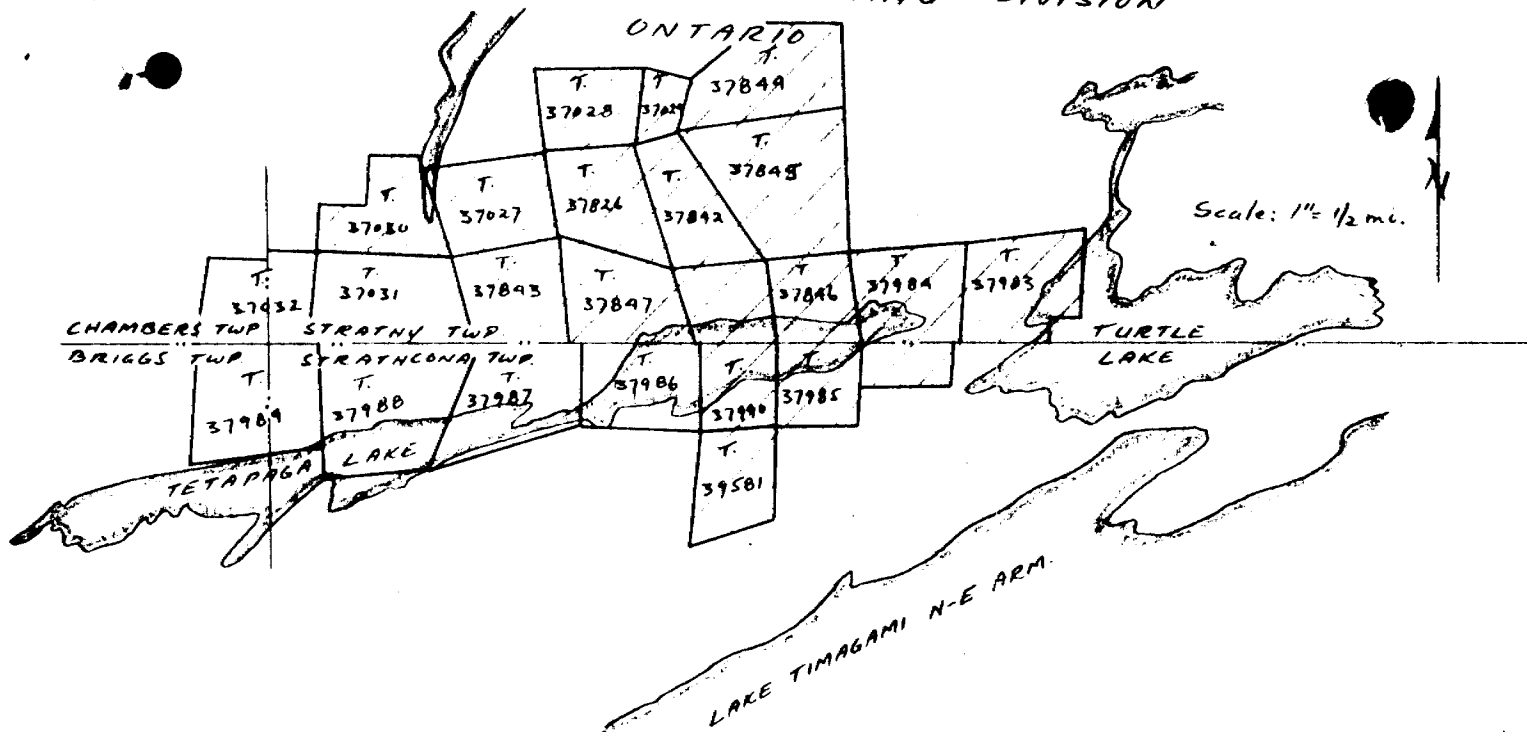
Scale: 1" = 1/2 mi.



Scale: 1" = 400'

CLIFFS OF CANADA LTD.  
R.H. Langille

TIMISKAMING, MINING DIVISION



CLIFFS OF CANADA  
 W. Langille

DIAMOND DRILL RECORD

Hole No. D-3

PROPERTY STRATHGAMI MINES INCORPORATED  
10' FN SM-10

Sheet No. 1

Location: Claim No. T-37 986

Lat. 1225' N

Dep. Baseline R, line 4000W

B. 3 E  
650' S, 100' W

Started July 29, 1961.

Completed Aug. 1, 1961.

Elevation of Collar \_\_\_\_\_

Datum \_\_\_\_\_

Ultimate Depth \_\_\_\_\_

Proposed Depth 200'

Direction at Start: \_\_\_\_\_

Bearing S 22° 30' E

Casing Pulled

Dip 45°

Date	Feet Drilled	Total Depth	Section			Remarks (Log)	Feet
			From	To	Feet		
July 29	73	73	0	3	Casing	3	8'-10
July 30	3	76	3	200	Mixed greywacke and slate; 2-4" grey, massive beds, and 1/4-1/2" black beds, respectively.	197	19'-35 29'-25 34'-40 41'-30 54'-40 64'-30
July 31	94	170			37.5, 87 calcite veins. 41 1" quartz vein. 76- pyrite blebs in rock. 90 1/2" quartz vein with pyrite. 104.5 quartz vein, slip surfaces on core. 124.5 pyrite along beds.		74'-30 84'-25 92'-30 101'-35 111'-30 121'-30 144'-30 158'-30 168'-25 177'-2 188'-15 199'-20
					136-137 ground core.		

Drilled by Boyles Bros. (Quebec) Limited

Gerald Barker, P. Eng.  
Engineer in Charge

PROPERTY

STRATHGAMI MINES INCORPORATED

Hole No. D-3Sheet No. 2

Date	Feet Drilled	Total Depth	Section			Remarks (Log)	Core Recovery	Foliation Inclination
			From	To	Feet			
						124.5-133.5, 153'-157', 162'-167' Mike?		
						rhyolite?		
						soft, pale grey rock, massive;		
						pyrite and pyrrhotite, scattered		
						Sulphides in calcite filled		
						fractures -- pyrrhotite,		
						minor chalcopyrite.		
						127'-129' quartz filled fractures parallel to core.		
			200			End of Hole		
						17' water seam.		
						DIP TEST at 200' measured 35°, corrected 32°		

Gerald Barker, Engineer in Charge