

31M045W0047 2.165 STRATHCONA

010

SUMMARY, CONCLUSIONS & RECOMMENDATIONS

Claim T54899 was explored by geophysical surveys during 1970.

No significant V. L. F. electromagnetic anomalies were delineated, and there was no magnetic relief.

The rocks underlying this claim are fine acid fragmentals, with local disseminations of pyrite.

One diamond drill hole is recommended to satisfy assessment requirements and probe a strong self-potential anomaly.

ACCOMPANYING MAPS

Dwg. 4044 - "Radem Electromagnetic Survey".

Dwg. 4043 - "Magnetometer Survey".

## INTRODUCTION

The claim under investigation, T54899 is owned by Copperfields Mining Corporation Ltd., P. O. Box 49, Toronto Dominion Centre, Toronto, Ontario.

The surveys were carried out by Geophysical Engineering & Surveys Ltd., personnel under the direct supervision of the writer. The instrument operators were A. Mac Donell and G. Andrews of North Bay, Ontario. The work was carried out during the period March 1-5th, 1970.

## LOCATION & ACCESS

Claim T54899 is situated in Strathcona Township, 3 miles west of Highway 11, and 2000' south of the south shore of Temagami Lake.

Easy access is by the bushroad along the south shore of Temagami Lake.

## SURVEY METHODS

Picket lines were cut south from the N65°E baseline which had been previously established just north of the claim under consideration. The lines are at 100' intervals and cover the northwest half of the claims, the south limit of the cut lines being approximately on a line between post 1 and post 3. Stations were established at 100' intervals on these cut lines.

Pace and compass extensions of these lines were made at 200' intervals, and readings were taken at 100' stations to permit a reconnaissance survey of the southeast portion of the claim. These uncut traverse lines terminated at the south claim boundary. All the traverse lines were at approximately 90° to the strike of the rock formations. A total of 2.2 miles of line was cut.

The V. L. F. Electromagnetic survey was done with a Crone Radem very low frequency unit. Readings were taken at 50 foot intervals on the cut lines and 100 ft. intervals on the pace and compass reconnaissance lines. The survey procedure is described in Appendix A.

The magnetometer survey was carried out with a Sharpe Fluxgate Model M. F. 1 magnetometer. Readings were taken at 100 foot intervals both on the cut and uncut lines.

The survey method is described in Appendix B.

#### RESULTS OF SURVEYS

No conductors were indicated by the Radem V. L. F. electromagnetic survey. This suggests the absence of major faults and lack of graphite or related large massive sulphide deposits, within 200' of surface.

The magnetometer survey showed no magnetic relief, suggesting the absence of magnetic dykes located elsewhere on adjoining claims by this method. There were no large areas of low

magnetic intensity, which also indicates the absence of major acid intrusives or exceptionally deep overburden.

RECOMMENDATION

Retain the claim to await developments on the adjoining group. Drill a 250' hole before December 21, 1970 to explore the 200 milivolt self-potential anomaly at 0 + 50S on line 51 + 00E.

It is recommended that the hole be collared on the baseline and drilled south at  $-45^{\circ}$ . The self-potential anomaly lies near the contact between the Metadiorite, and the Rhyolite breccia tuff (RbXt) to the south, and has interesting exploration potential.

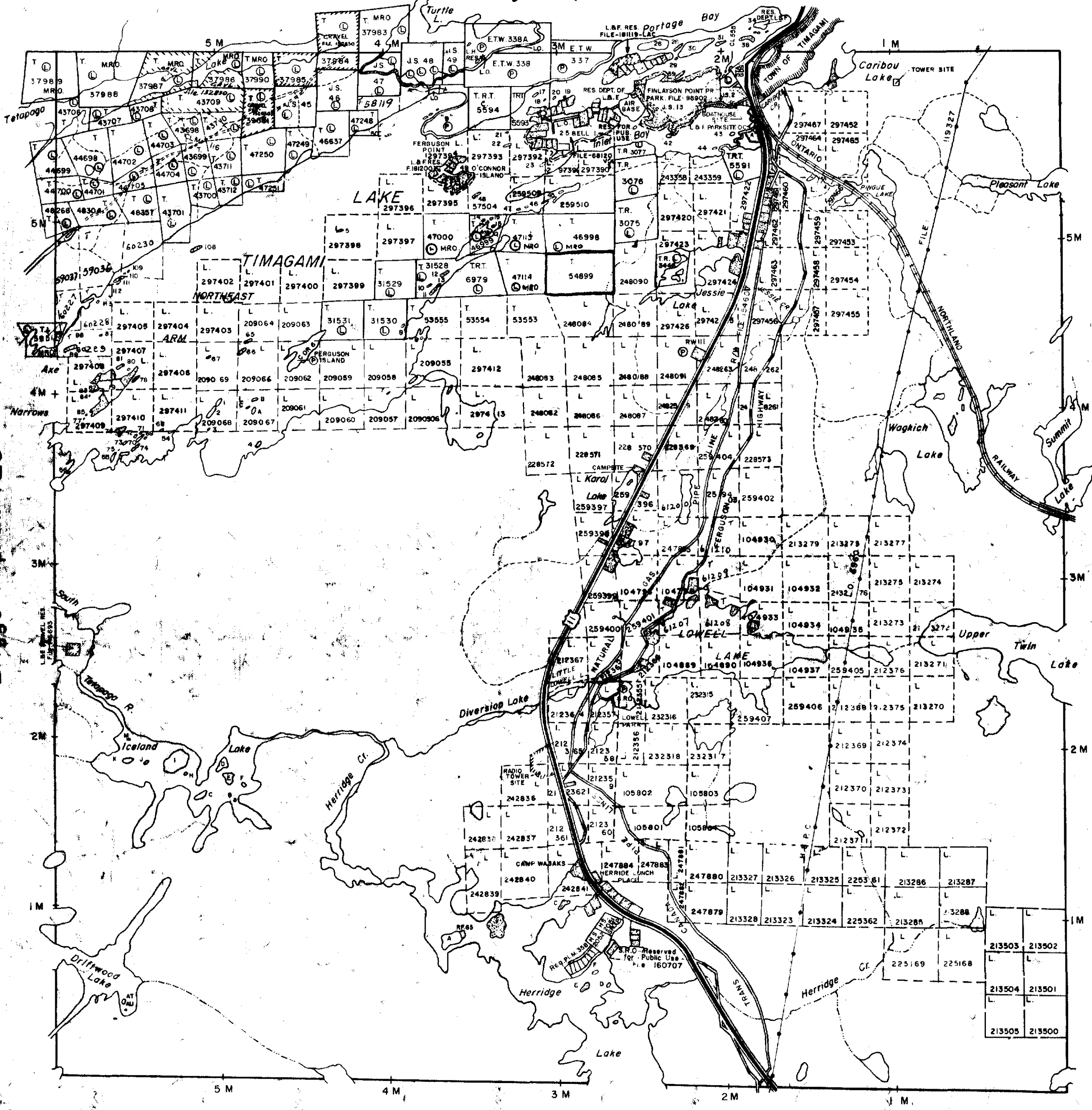
*R. J. Graham*

\_\_\_\_\_  
R. J. Graham, P. Eng.





Strathy Twp. M.596



THE TOWNSHIP  
CLAIM OF MAP  
**STRATHCONA**

DISTRICT OF  
NIPISSING

LARDER LAKE  
MINING DIVISION

SCALE: 1-INCH = 40 CHAINS

**LEGEND**

- PATENTED LAND Ⓟ
- CROWN LAND SALE C.S.
- LEASES Ⓛ
- LOCATED LAND Loc.
- LICENSE OF OCCUPATION L.O.
- MINING RIGHTS ONLY M.R.O.
- SURFACE RIGHTS ONLY S.R.O.
- ROADS —
- IMPROVED ROADS —
- KING'S HIGHWAYS —
- RAILWAYS —
- POWER LINES —
- MARSH OR MUSKEG —
- MINES —
- CANCELLED —

**NOTES**

- 400' Surface Rights Reservation around all Lakes and Rivers.
- Sand and gravel in this township reserved until further notice.
- For status of island in this Twp. and summer resort locations shown thus: please contact Dept. of Lands & Forests.
- Islands in Lake Timagami Not Open for Staking.

DATE OF ISSUE  
**DEC 18 1970**  
ONT. DEPT. OF MINES  
AND NORTHERN AFFAIRS

PLAN NO. **M.595**

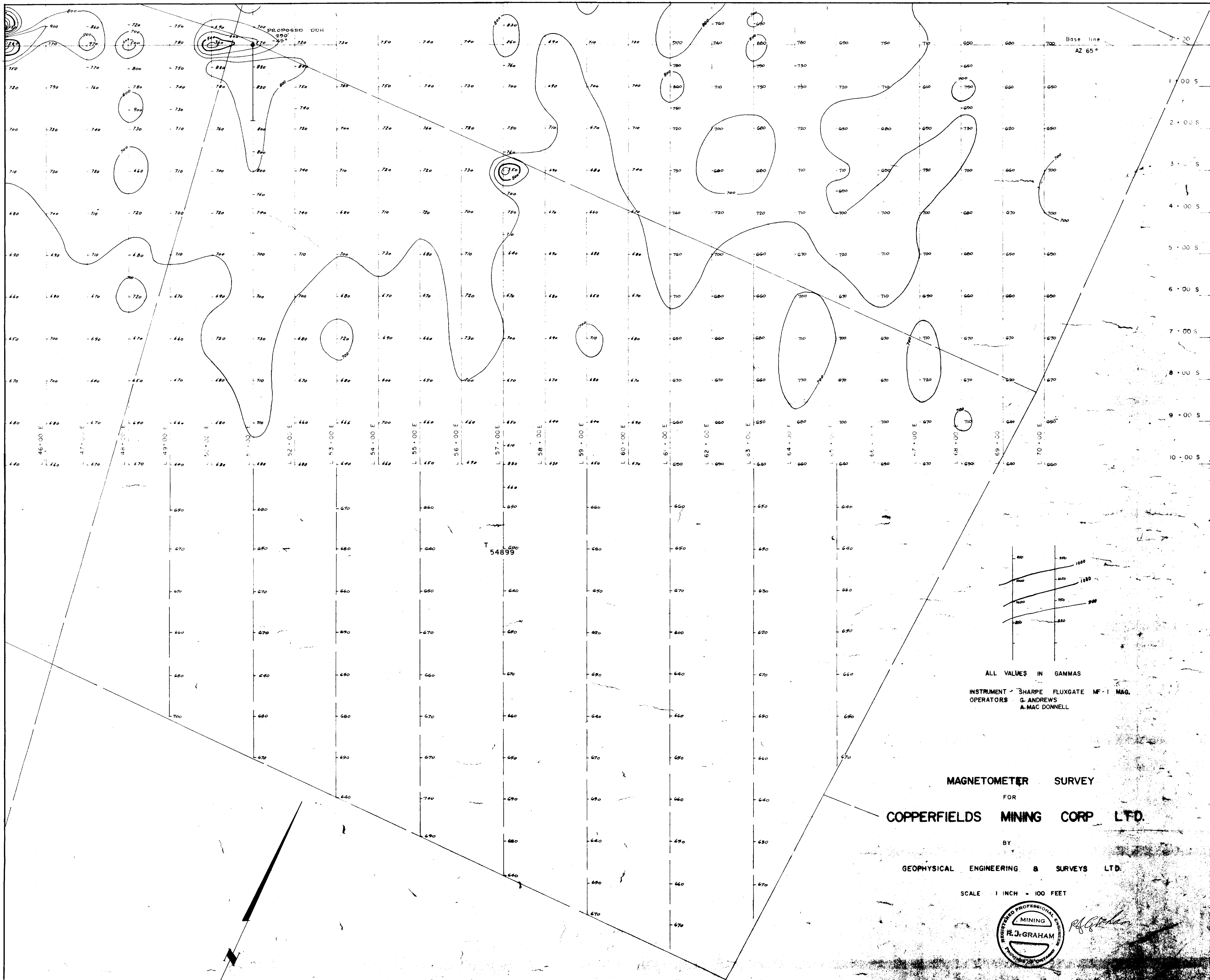
**ONTARIO  
DEPARTMENT OF MINES  
AND NORTHERN AFFAIRS**

Briggs Twp. M.428

Riddell Twp. M.578

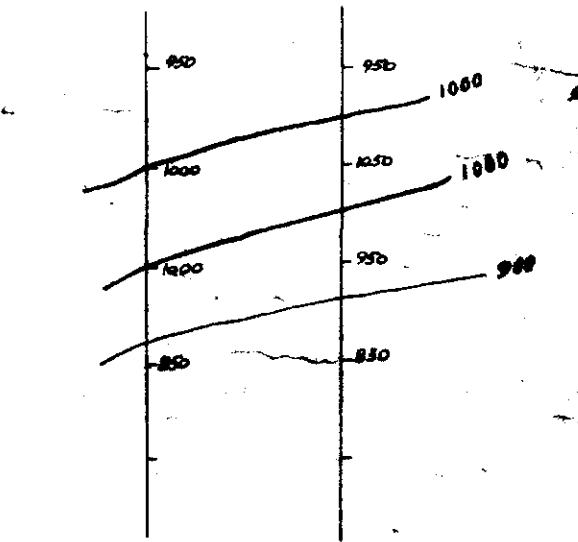
Law Twp. M.529





Base line  
AZ 65°

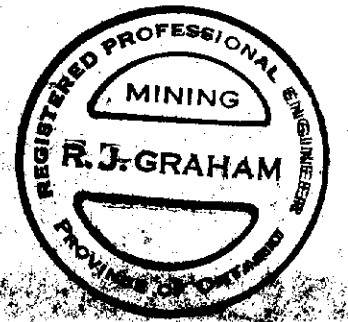
PROPOSED DDDH  
AZ 250°



ALL VALUES IN GAMMAS  
INSTRUMENT - SHARPE FLUXGATE MF-1 MAG.  
OPERATORS - G. ANDREWS  
A. MAC DONNELL

MAGNETOMETER SURVEY  
FOR  
COPPERFIELDS MINING CORP LTD.  
BY  
GEOPHYSICAL ENGINEERING & SURVEYS LTD.

SCALE 1 INCH = 100 FEET

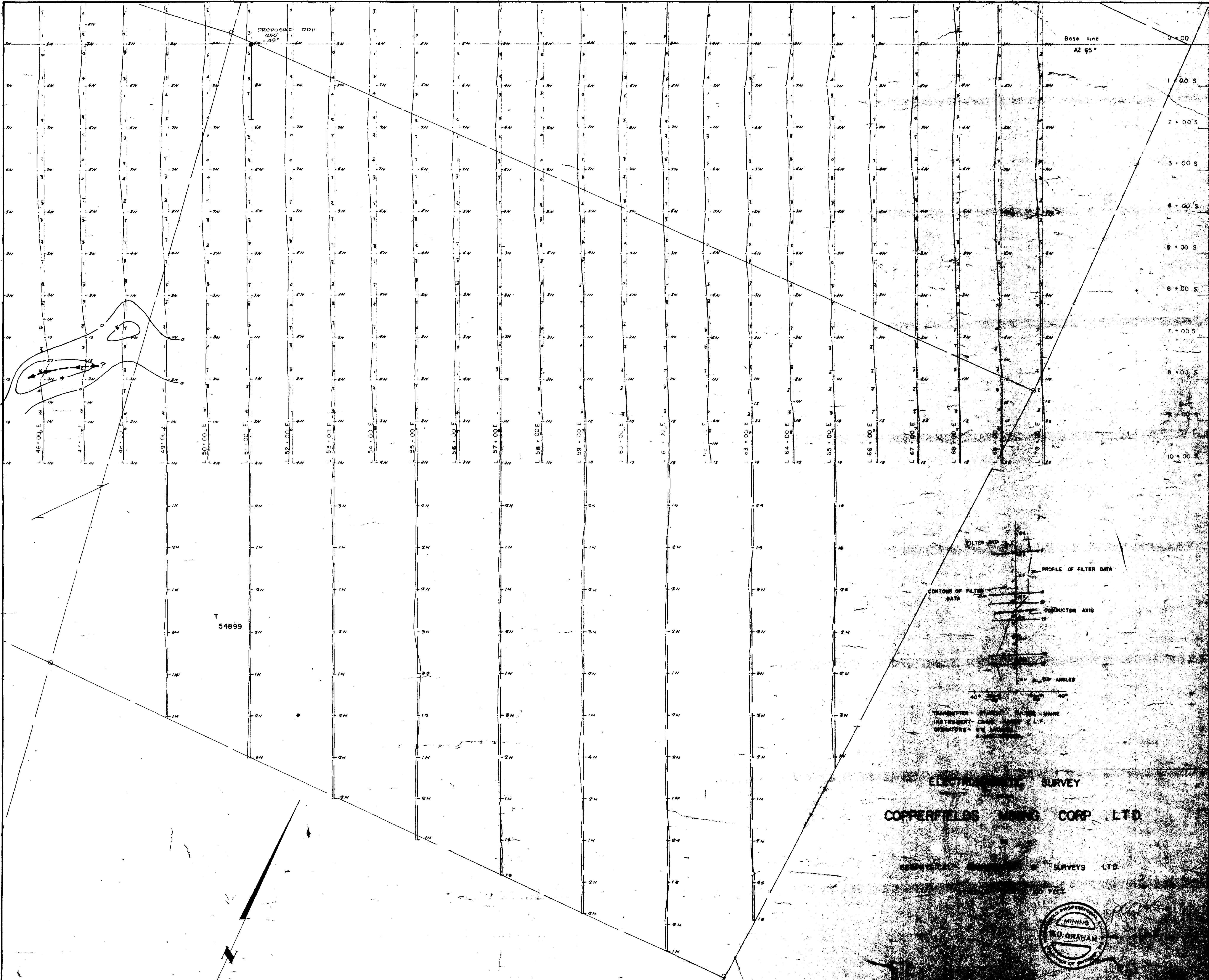


31 M/4 NOV 1964

4043







3198459847 2.165 STRATHCONA