



31M04SW0116 10 RIDDELL

010

# Diamond Drilling

Township of Riddell

Report N<sup>o</sup>: 10

Work performed by: E. W. Burke

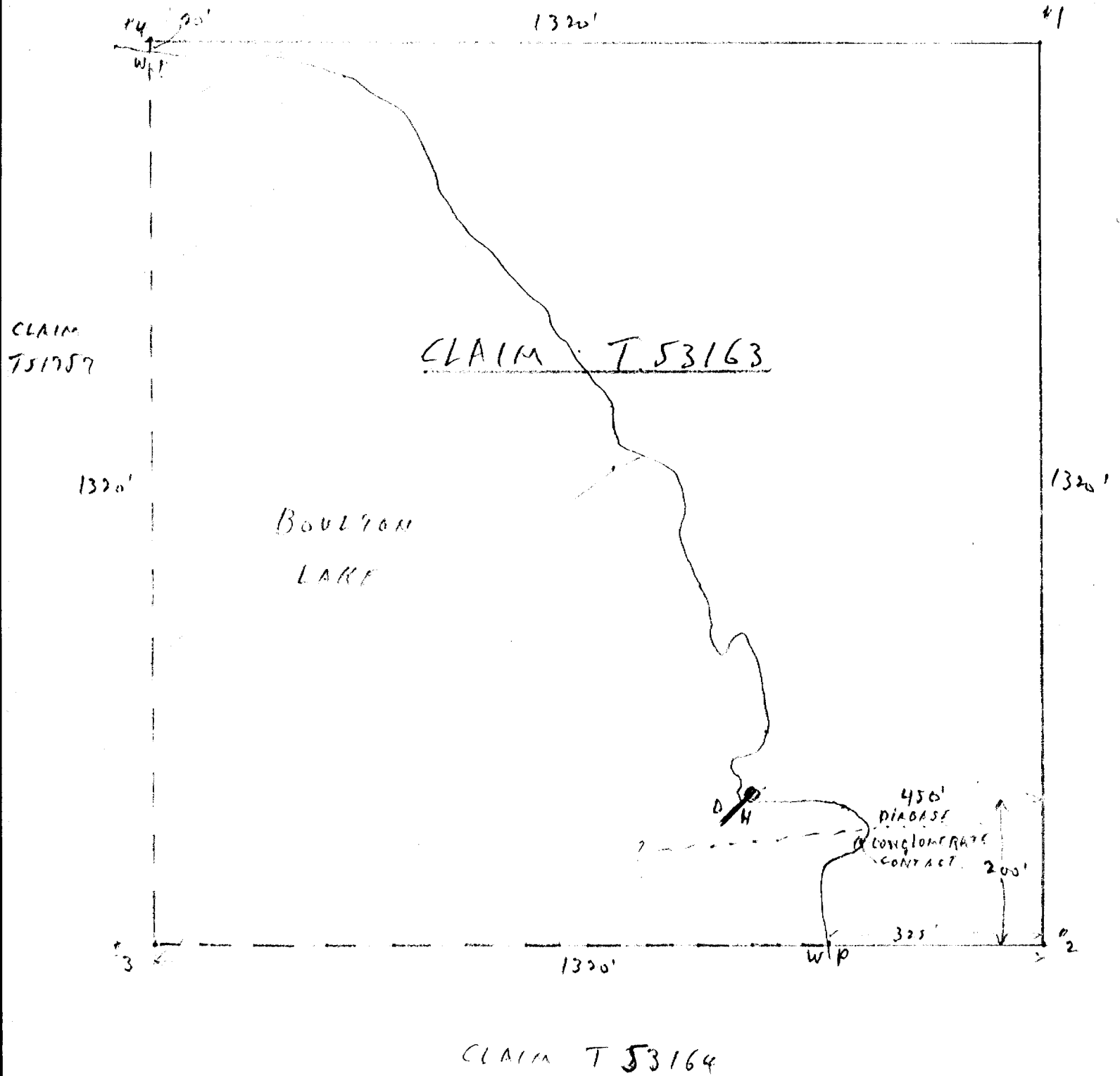
Claim N <sup>o</sup>	Hole N <sup>o</sup>	Footage	Date	Note
T 53163	1	150'	June/64	
	3	100' 2"	Aug/65	
T 53164	6	100' 6"	July/66	

Notes:

DIAMOND DRILLING JUNE SEPTEMBER 1964

E. BURKE

RIDDELL TWP. - TEMISKAMING.



DIAMOND DRILLING

July, Aug. - Sept 1966

E. W. BURKE

CLAIM  
T. 55075

CLAIM 7.53163

CLAIM 7.53164

SOULTON LAKE

BAY

WP.

350'

520'

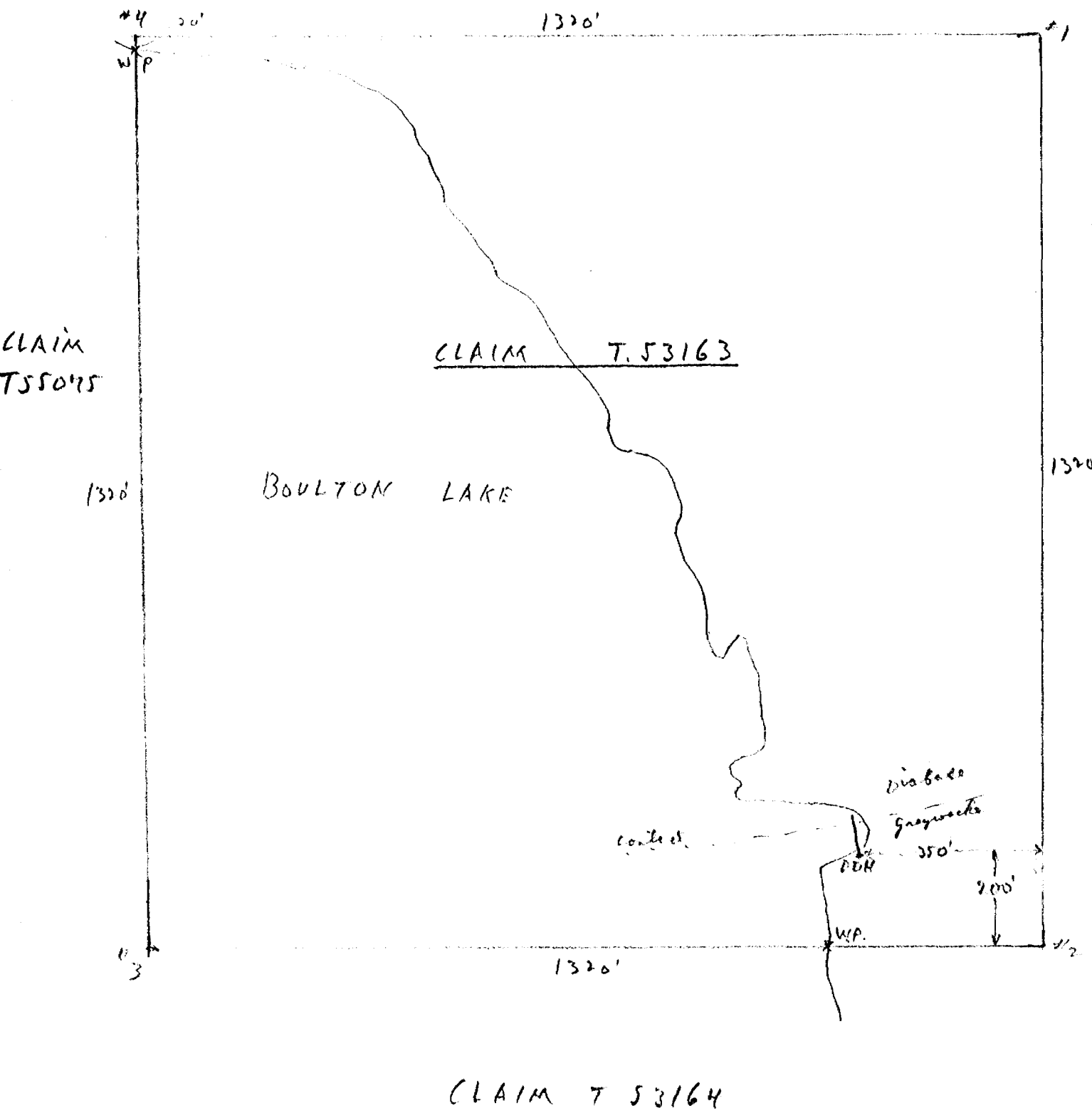
DDH on small islet (low water)  
Shallows at high water  
60' off shore.

E. W. Burke

DIAMOND DRILLING Aug 1965 - May 1966

E. W. BURKE

RIDDELL TWP. TEMISKAMING



# DIAMOND DRILL RECORD

Hole No. 1 Sheet No. 1

Property Claim T.53163  
 Location Riddell Township  
East end Boulton Lake  
Temiskaming Mining Division  
 Latitude \_\_\_\_\_  
 Departure \_\_\_\_\_  
 Bearing South-West under lake.

Dip 53 degrees South-West.  
 \_\_\_\_\_  
 \_\_\_\_\_  
 Total Footage 150 feet

Elev. Collar About 1000 feet  
 Datum \_\_\_\_\_  
 Date Started June 24th, 1964  
 Date Completed Sept 15th, 1964  
 Drilled by E. W. Burke  
 Logged by Same

Footage		Formation	Sample Number	Sample Footage	Sample Width	Gold Sample	Gold Sludge	Remarks
From	To							
0	150'	Quartz diabase with dark iron-rich inclusions						
		There was no change in the formation, which was badly broken, making drilling very slow. I was trying to reach a conglomerate contact under the lake, but did not get that far. At 73 feet I hit about 5 inches of red hematite, but all core was lost. At 139 feet there was about 1/8 inch of galena. There was not enough mineralization to be worth assaying. I am drilling further holes as soon as I can get back, and will probably deepen this one at a later date.						

Date of Examination Sept 15th, 1964

*E. W. Burke*  
 \_\_\_\_\_  
 CLAIM OWNER

## DIAMOND DRILL RECORD

Hole No. 3 Sheet No. 1

Property Claim T.53163  
 Location Boulton Lake, Riddell Twp.  
 Temiskaming Mining Division  
 Latitude \_\_\_\_\_  
 Departure \_\_\_\_\_  
 Bearing North north-west under Bay

Dip

- 40 degrees

Total Footage 100' 2"

Elev. Collar Approx 1000' above sea level  
 Datum Hole commenced a few inches above lake  
 Date Started Aug 21st, 1965 at shoreline.  
 Date Completed May 30th, 1966  
 Drilled by E. W. Burke  
 Logged by Same

Footage		Formation	Sample Number	Sample Footage	Sample Width	Gold Sample	Gold Sludge	Remarks
From	To							
0'	88'	Medium gray, fine grained greywacke, with many small veinlets of white quartz.						
88'	92'	the greywacke became slightly spotted with hornblende, then more and more so, until at 92 feet and beyond, the rock was typical diabase. The intrusive seems to have metamorphosed the greywacke over a considerable distance.						
92'	100' 2"	typical diabase						No assays, as not sufficient mineralization.
		Notes/ I had been expecting a sharp contact between the two types of rock, but this is not so. This hole was drilled to find out where the contact is, and whether there was any sign of mineralization. There was nothing but a very small amount of pyrite in the greywacke, over the entire distance.						

Date of Examination May 30th, 1966*E. W. Burke*

# DIAMOND DRILL RECORD

Hole No. 6 Sheet No. 1

Property Claim T.53164  
 Location South side Boulton Lake  
Riddell Twp. Temiskaming Mining Div.  
 Latitude \_\_\_\_\_  
 Departure \_\_\_\_\_  
 Bearing \_\_\_\_\_

Dip  
 -30 degrees  
 \_\_\_\_\_  
 \_\_\_\_\_  
 \_\_\_\_\_  
 in N.N.W. direction

Elev. Collar Approx 1000 feet above sea level  
 Datum Collar at lake level (Low water)  
 Date Started July 27th, 1966  
 Date Completed Sept. 20th, 1966  
 Drilled by E. W. Burke  
 Logged by Same

Total Footage 100' 6"

Footage		Formation	Sample Number	Sample Footage	Sample Width	Gold Sample	Gold Sludge	Remarks
From	To							
0'	03'	Small pebble conglomerate. Very small quantity of sulphides.						
03'	100' 6"	Fine grained greywacke with a large number of quartz veinlets running in many directions. at 23 feet, a $\frac{1}{2}$ inch white quartz vein and at 54 feet a one-inch quartz vein, showing pyrite in places. It was the same greywacke to the bottom of the hole. Minor flecks of pyrite throughout the core. This hole is headed for the diabase contact, but is still 250' to 400' from it under the lake. I would expect <del>more</del> more mineralization nearer the contact.						From visual examination, there is not sufficient mineralization to justify a regular assay.

Date of Examination September 20th, 1966

*E. W. Burke*