



31M04SW0133 25 STRATHY

010

STRATHY TOWNSHIP REPORT NO. 25

This file contains work performed by Strathagami Mines on claim:

T.37847

Hole # D-4

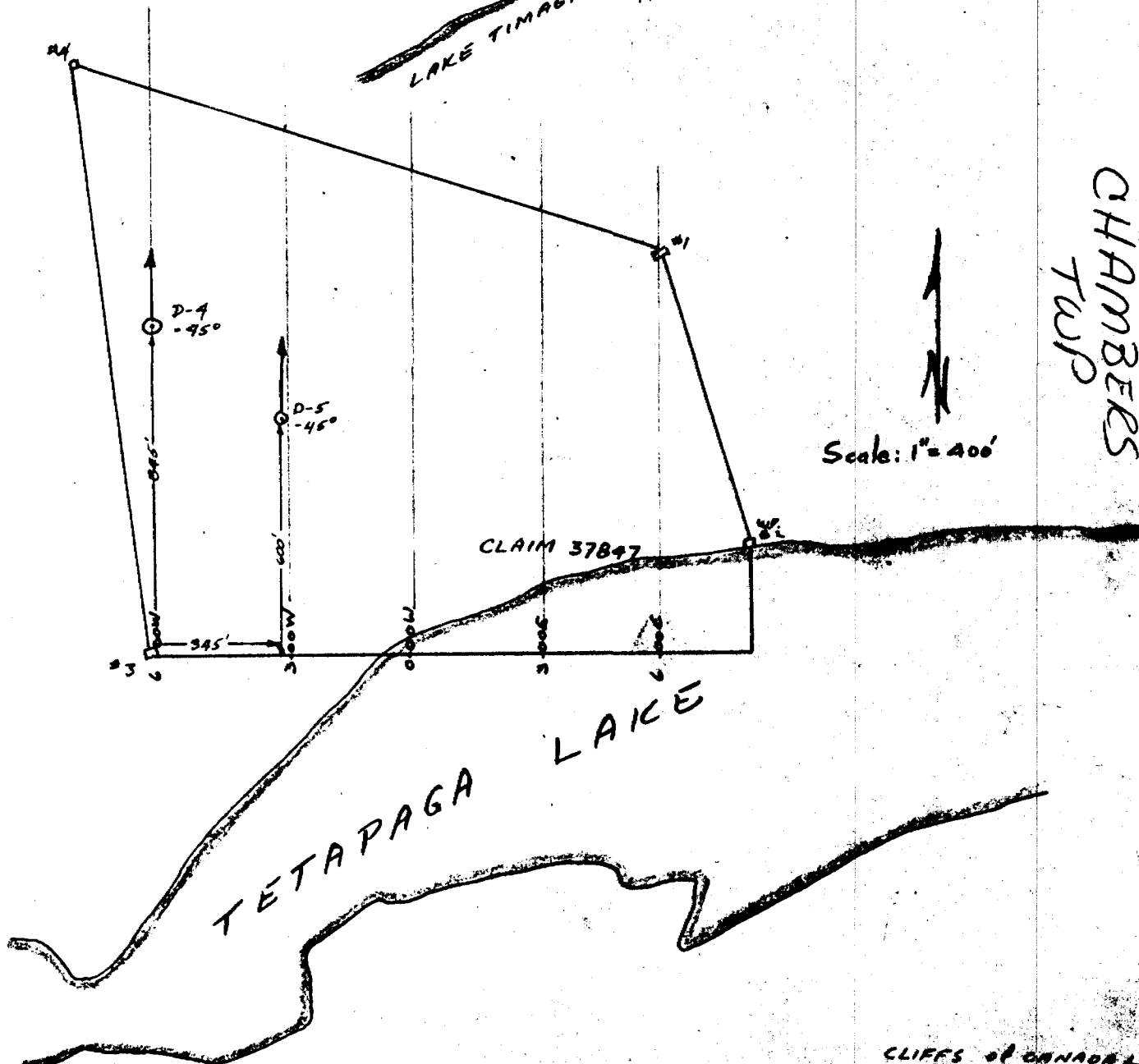
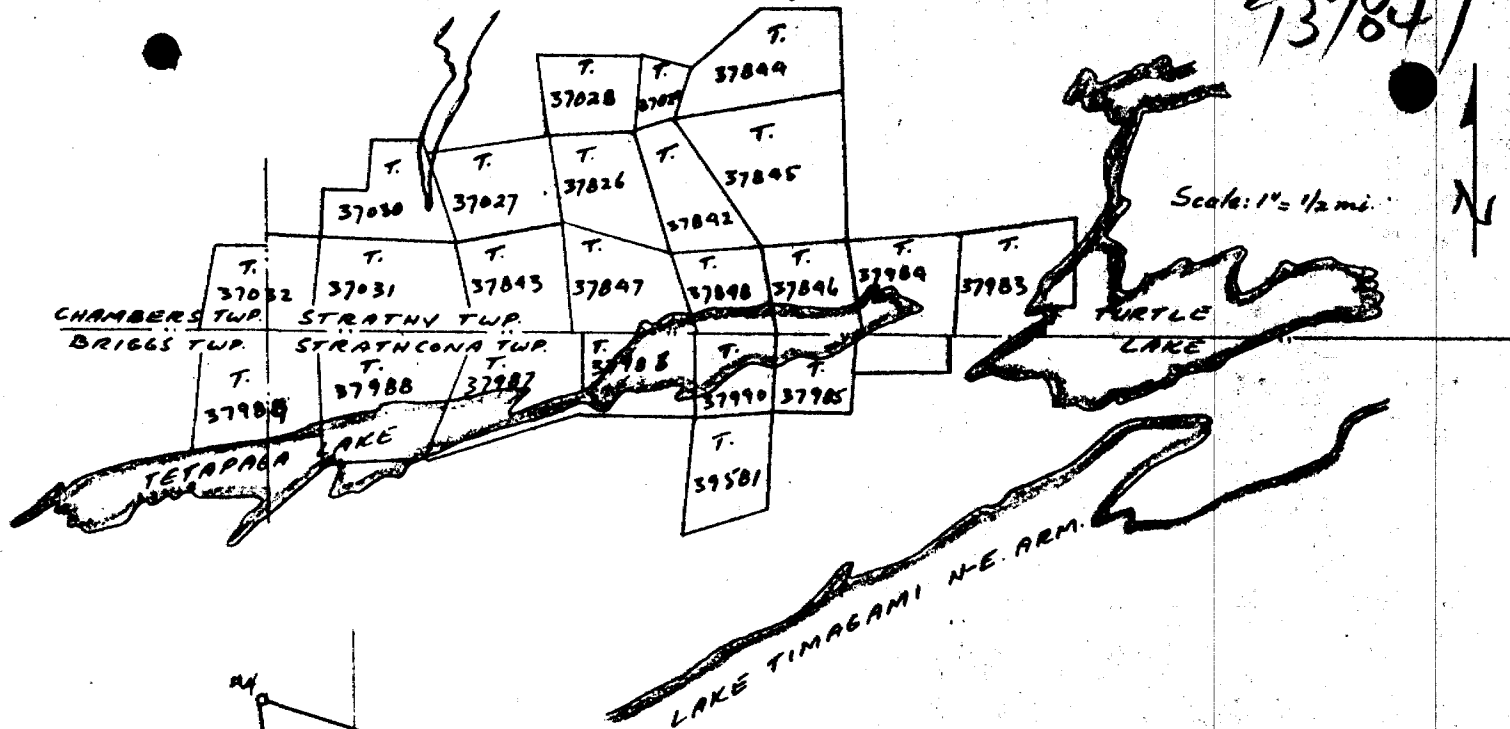
Aug/61

D-5

Aug/61

Strathby Twp TIMISKAMING MINING DIVISION  
ONTARIO

137847



DIAMOND DRILL RECORD

Hole No. D-4

PROPERTY STRATHGAIN WINE INCORPORATED

Sheet No. 1

Location: Claim No. T-37847  
 Lat. 84° 5' N  
 Dep. 1 line CW  
 Elevation of Collar \_\_\_\_\_  
 Datum \_\_\_\_\_  
 Direction at Start: Bearing N 00°  
 Dip 45°

**IRVEN L.O. 3296-0**

Started August 3, 1961.  
 Completed August 5, 1961.  
 Ultimate Depth \_\_\_\_\_  
 Proposed Depth 305'

**Casing Falled**

Date	Feet Drilled	Total Depth	Section			Remarks (Log)	Core Recovery	Foliation Inclination
			From	To	Feet			
Aug. 3			0	4	4	Casing		24°-40°
Aug. 4			4	23	19	Andesite Lava, pale green, massive, calcite veinlets, 10, 14, 2" quartz veins, 15-15.5 white amygdalae, feldspar?	51	24°-30° 44°-35° 51°-30° 64°-35° 74°-40°
			23	74	51	Andesite Tuff, Agglomerate, thin beds of tuff between agglomerate sections. 2 1/8" beds of pyrrhotite. 28'-29' Niyolite tuff and pyrrhotite. 29'-35' Andesite Agglomerate with pyrrhotite in matrix.		111°-30° 121°-25° 132°-30° 142°-30° 152°-30° 168°-30° 172°-30° 200°-30° 300°-40° Fnd.
						70°-74' Agglomerate		

Drilled by **Boyles Bros. Drilling (Quebec) Limited**

**Gerald Parker, P. Eng.**  
 Engineer in Charge

Date	Feet Drilled	Total Depth	Section			Remarks (Log)	Core Recovery	Foliation Inclination
			From	To	Feet			
						74'-75' calcite vein parallel to core axis.		
			74	101	27	Andesite Lava, pale green, 1mm white amygdules throughout; calcite veinlets. 74'-76' 2 mm amygdules.		
			101	277	176	Andesite Agglomerate, and Tuff, 1/4-2" fragments, calcite veinlets. 103'-175' sorted tuff sections, deposited in water/. 175'-199' land deposited agglomerates, poor bedding. 194' quartz vein with pyrite. 199'-230' poorly sorted tuff and agglomerate. 230'-277' land deposited agglomerate, not sorted. 239' calcite vein.		
			277	305	28	Andesite Lava, amygdaloidal, and Andesite		

 Gerald Parker, P. E.  
 Engineer in Charge

PROPERTY STRATHGAMM MINES INCORPORATED

Hole No. D-1

Sheet No. 3

Date	Feet Drilled	Total Depth	Section			Remarks (Log)	Core Recovery	Foliation Inclination
			From	To	Feet			
						Agglomerate mixed in short sections. Fragments of amygdaloidal lava in agglomerate. Calcite veinlets. Unsorted agglomerate, or sand deposited.		
				305		End of Hole		
						No reason for E. N. anomaly.		
						More sulphides in pit than in core below it.		
						E. N. conductor is approximately 100' north of pit.		
						DIP TEST		
						200' measured 25°, corrected 22 1/2°		

Gerald Parker, P. Eng.  
 Engineer in Charge

DIAMOND DRILL RECORD

Hole No. D-5

PROPERTY STRATHGAMI MINES INCORPORATED

Sheet No. 1

Location: Claim No. T-37847  
 Lat. Line 3W  
 Dep. 600' N, 7' W  
 Elevation of Collar \_\_\_\_\_  
 Datum \_\_\_\_\_

TSSEN L.O. 3296-C

Started August 7, 1961.  
 Completed August 8, 1961.  
 Ultimate Depth \_\_\_\_\_  
 Proposed Depth 203'

Bearing N 00°  
 Direction at Start: Dip 45°

Casing Pulled

Date	Feet Drilled	Total Depth	Section			Remarks (Log)	Core Recovery	Foliation Inclination
			From	To	Feet			
Aug. 7	122	122	0	5	5	Casing		6°-40°
Aug. 8	81	203	5	8	3	Andesite Tuff, well bedded.		127°-40°
			8	121	113	Andesite Lava, pale green, with white amygdules.		150°-40°
						8-22 abundant hard white amygdules.		183°-30°
						8-11 abundant calcite veinlets.		197°-30°
						8-50, 60-106 many calcite veins with chlorite along margins, dominantly at 40° to normal to core axis, cut across other calcite veinlets.		202°-40°
						50-57 aphanitic, darker green, no		end

Drilled by Royles Bros. Drilling (Quebec) Limited

Gerald Barker, P. Eng.  
 Engineer in Charge

PROPERTY STRATHGAMMI MINES INCORPORATED

Hole No. D-5

Sheet No. 2

Date	Feet Drilled	Total Depth	Section			Remarks (Log)	Core Recovery	Foliation Inclination
			From	To	Feet			
						white minerals.		
			121	139	18	Andesite Tuff		
						121'-128' thick beds, land deposited?		
						128'-139' very weakly disseminated pyrite and pyrrhotite in tuff and agglomerate.		
						136'-137' quartz vein.		
			139	203	64	Andesite Agglomerate, poorly sorted, calcite stringers.		
						159' quartz vein.		
						182'-203' more distinct beds of tuff.		
				203		End of Hole		
			DIP TEST					
			measured 50°			corrected 46°		

Gerald Parker, P. Eng.  
Engineer in Charge