



31M04SW0134 24 STRATHY

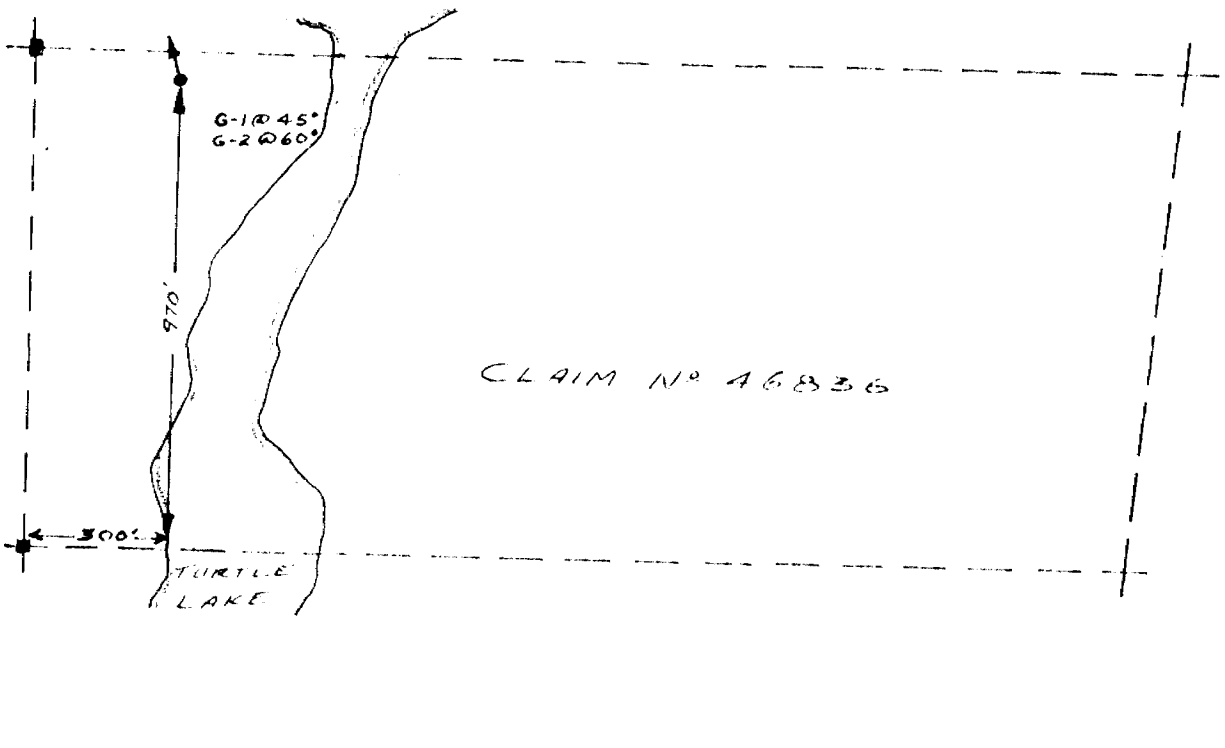
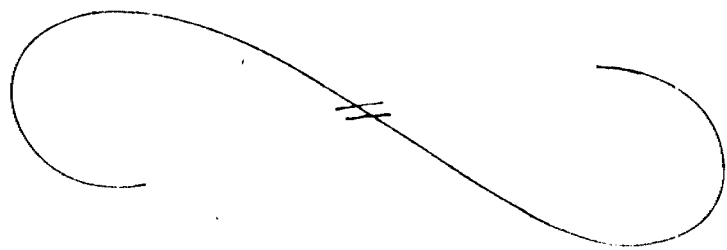
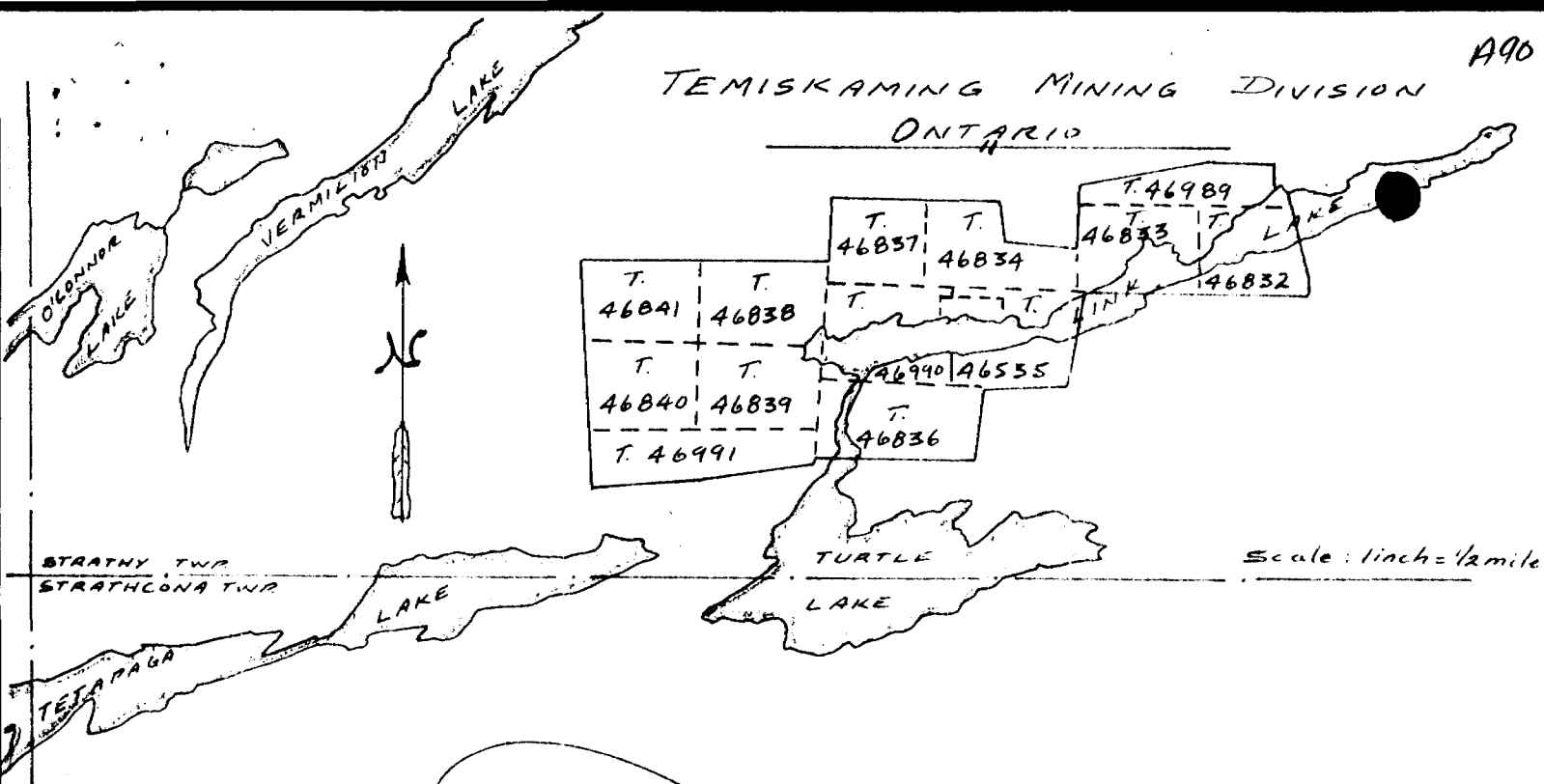
010

STRATHI TOWNSHIP REPORT NO. 24

This file contains work performed by Strathagami Mines on claims:

T.46836	Hole #	G-1	615'	Mar/61
		G-2	428'	Mar/61
T.37845	Hole #	D-6	251	Aug/61
		D-7	257	Aug/61
T.37983	Hole #	D-8	301	Aug/61
		Sdh.	1852'	

TEMISKAMING MINING DIVISION
ONTARIO



L.O. 3301-C
 STRATHGAMI MINES INC.
 D. G. Langille, 7 April 1961

A91

DIAHONDI DRILL LOG

PROPERTY STRATAGEM MINES INC.

Location: Claim No. T 46826 GUPPY L.O. 3301-0
 Lat. 31°E 170'N #3 post T 46836
 Dep. or of #4 post T 39248 (surveyed)

Started March 23, 1961
 Completed March 26, 1961
 Ultimate Depth 615'
 Proposed Depth

Elevation of Collar
 Datum

Bearing N 15°
 Direction at Start: Dip -45°

Ext core

Casing Pulled

Date	Feet Drilled	Total Depth	Section			Remarks (Log)	Core Recovery	Foliation Inclination
			From	To	Feet			
Mar. 23	213	213	0	5	5	Casing in outcrop.		89° 55'
Mar. 24	182	425	5	92	87	Andesite lava, soft, massive, uniform green rock composed of small green and white minerals in pale green matrix.		116° 00'
Mar. 25	106	532				51-70' Abundant calcite filled fractures		
Mar. 26	85	615				83' pink calcite filling fracture.		
						89' lineations - 55°		
						89'-92' top of flow?, fine grained, altered, carbonate rhombs.		
			92	119	57	Rhyolite lava, hard massive.		
						92'-116' pale yellow-gray		
						101'-116' pink calcite filling voids		

Drilled by Charles Brown, (Quebec)

Gerald Barker, P. Eng.
 Engineer in Charge

417

PROPERTY _____

Date	Feet Drilled	Total Depth	Section			Remarks (log)	Core Recovery	Foliation Inclination
			From	To	Feet			
						in rock		
						116' contact at 60°		
						116'-129' reddish, with small quartz eyes, pink calcite filling fractures and voids.		
						129'-149' mixed soft and hard, pale yellow-grey, calcite and quartz filling fractures and voids. 140-144 reddish.		
			149	178	29	Andesite Tuff, medium green, beds difficult to distinguish; some calcite veinlets,		
			178	248	70	Intermediate Tuff, (between andesite and chryolite in composition), pale green- grey, soft		
						198-248 small green mineral--chlorite?, and small white mineral, harder than calcite, 1/16-1/4" diameter in variable shapes. 248 1/4" yellowish		

Gerald Parker, P. Eng.
Engineer in Charge

PROPERTY _____

SECTION _____

DATE _____
 NO. _____

Date	Feet Drilled	Total Depth	Section			Remarks (log)	Core Recovery	Relative Humidity
			From	To	Feet			
						Top edge of core		151.00 100%
			248	251	3	Calcite in fractures.		
						Intermediate Tuff, pale green, calcite in fractures		
			251	258	7	Intermediate Tuff, poor beds in general.		256.00
			258	305	47	Intermediate Tuff, soft, pale gray to pale green, massive.		
						258-270 fine white minerals.		
						270-305 10-20% 1/2" white mineral		
						which increases in quantity with depth, siliceous, apparent banding of particles 20"		
						Locally calcite filling fractures.		290.00
			305	310	5	Intermediate Tuff, similar in appearance to 255-305, but not as uniform in texture		
						black, much softer than above rock.		
			310	330	20	Spallite Tuff, massive, pale gray, softer than above rock (255-305). Rock grinds		

Gerald Parker, P. Eng.
 Engineer in Charge

Date	Feet Drilled	Total Depth	Section			Remarks (log)	Core Recovery	Foliation Inclination
			From	To	Feet			
						very easily. Slippery feeling.		361.5°
						Rock appears to be altered, though some appearance remains.		
						25-35 oxide, 1 mm. grains with calcite in matrix. - Very weak mineralization.		
			328	357	19	Spinelite buff, massive, pale grey, soft (as 328-305), few white minerals 1/8". In general similar to 328-305.		
			357	300	33	Spinelite, agglomerate; very, pale grey matrix 1/8-1/2" white fragments.		
			300	102	12	Spinelite buff, massive, grey rock, soft; with calcite drilling fractures.		
			102	121	19	Spinelite, tan, massive, hard, grey rock; 102, 108, 5-12 pyroxenite, or pyroxenite and oxide along edges of white rock which may be cooled parts of lava.		

Gerald Barker, P. Eng.
 Engineer in Charge

PROPERTY STRATTONS BOND CO.

Hole No. 2

Sheet No. 1

Date	Feet Drilled	Total Depth	Section			Remarks (log)	Core Number	Foliation Indicated
			From	To	Feet			
			421	502	81	<p>Basaltic tuff, hard, gray rock, soft, slippery feeling, blocky con., etc. green.</p> <p>435, 432 disseminated pyrite for few inches, 440-443 soft, green rock.</p>		
			502	523	21	<p>Basaltic Agglomerate, soft, gray rock, 80% 1/8-1/2" fragments.</p> <p>506-507, 511, 512, 518 pyrochloite in rock.</p>		
			523	597.5	74.5	<p>Basaltic tuff, soft gray rock.</p> <p>526 8" andesite band.</p> <p>529-550 small white fragments or mineral in rock; harder than 523-529, but soft. 550-574 as 529-550 but increasingly harder. 574-597 coarse fragments.</p> <p>581-584 white rock with scattered pyrite.</p> <p>597 irregular banding prominent, other parts have irregular banding of white</p>		

Gerald Barker, P. Eng.
 Engineer in Charge

PROPERTY

No. 101

Date

Date	Feet Drilled	Total Depth	Section			Remarks (log)	Core Recovery	Foliation Inclination
			From	To	Feet			
						291-301 pink calcite		
						281-289, 296, 301 abundant pink calcite, softer rock than 290'		
						303-364 few 1/16" white fragments white calcite veinlets softer rock than 290'		
						333-354 banding more prominent.		
						364-405 medium hard, chlorite in rock white calcite veinlets.		
			405	414	9	Hydroxide low, hard, white, with scattered pyrochloite and pyrite.		
						413-414 soft, pyrite mineralization.		
			414	422.5	8.5	Hydroxide Tuff (?), medium hard, grey.		
			422	428	5.5	Hydroxide Tuff, soft, well banded grey and yellow rock, locally contorted. Not similar to any rock in G-1.		
				428		End of Hole.		

DIP TEST
400' measured 56° corrected 52°

Gerald Barker, P. Eng.
Engineer in Charge

DIAMOND DRILL RECORD

Hole No. D-6
 Sheet No. 1

PROPERTY STRATHGAMM MINES INCORPORATED

Location: Claim No. T. 37845
 Lat. 2630'N
 Dep. Line 24+00 N, 115' E
 Elevation of Collar _____
 Datum _____
 Direction at Start: Bearing N 00°
 Dip -50°

TRSEN OPTION 8M-10

Started _____
 Completed August 10, 1961
 Ultimate Depth August 11, 1961
 Proposed Depth 251 feet

Date	Feet Drilled	Total Depth	Section			Remarks (Log)	Foliation Inclination
			From	To	Feet		
Aug. 10			0	2	2	Casing	
			2	123	121	Andesite lava with calcite veinlets and minor disseminated pyrite	25°- 35
			123	131	8	Mixed brecciated lava and granitic schist with abundant disseminated pyrite.	50°- 50 75°- 45 105°- 40 130°- 60 151°- 45
			131	150.5	19.5	Andesite lava with calcite veinlets.	170°- 35 200°- 50
			150.5	153	2.5	Brecciated lava with some graphite in shears.	240°- 55
			153	251	98	Andesite Lava - 159.5' 1 inch massive pyrite. 173'-189' brecciated, 231-233.5' sheared graphitic zone.	
				251		End of Hole	

Dip Test-
 200' corrected 44°

Drilled by Boyles Bros. Drilling (Quebec) Limited

A. R. Mead
 Engineer in Charge

DIAMOND DRILL RECORD

Hole No. 10-7

PROPERTY

Sheet No. 1

STRATHGAMI MINES INCORPORATED

Location: Claim No. T. 37845
 Lat. 2692'N
 Dep. Line 27+00 E, 22' E
 Elevation of Collar Datum

INSIGN OPTION 20-10

Started August 13, 1961
 Completed August 11, 1961
 Ultimate Depth 257'
 Proposed Depth

Bearing N 00°
 Direction at Start: Dip -50°

Date	Feet Drilled	Total Depth	Section			Remarks (Log)	Foliation Inclination
			From	To	Feet		
Aug. 13			0	2	2	Casing	15°-70
			2	161	159	Andesite Lava, in part agglomeratic with minor calcite veinlets, some minor disseminated pyrite.	30°-65 45°-50 60°-50 75°-30 107°-35 140°-60
			161	162	1	Sheared graphite with pyrite	169°-40
			162	166	4	Andesite Lava	182°-50
			166	170	4	Graphite schist with pyrite	210°-55
			170	186	16	Andesite Lava with minor disseminated pyrite in association with calcite veinlets.	245°-50
			186	187	1	Sheared black volcanic with graphite and pyrite.	
			187	257	70	Andesite Lava with calcite veinlets and disseminated pyrite, locally some sericite. 216°-220 abundant	

Drill by _____

_____ Engineer in Charge

Boyles Bros. Drilling (Quebec) Limited

E. R. Mead.

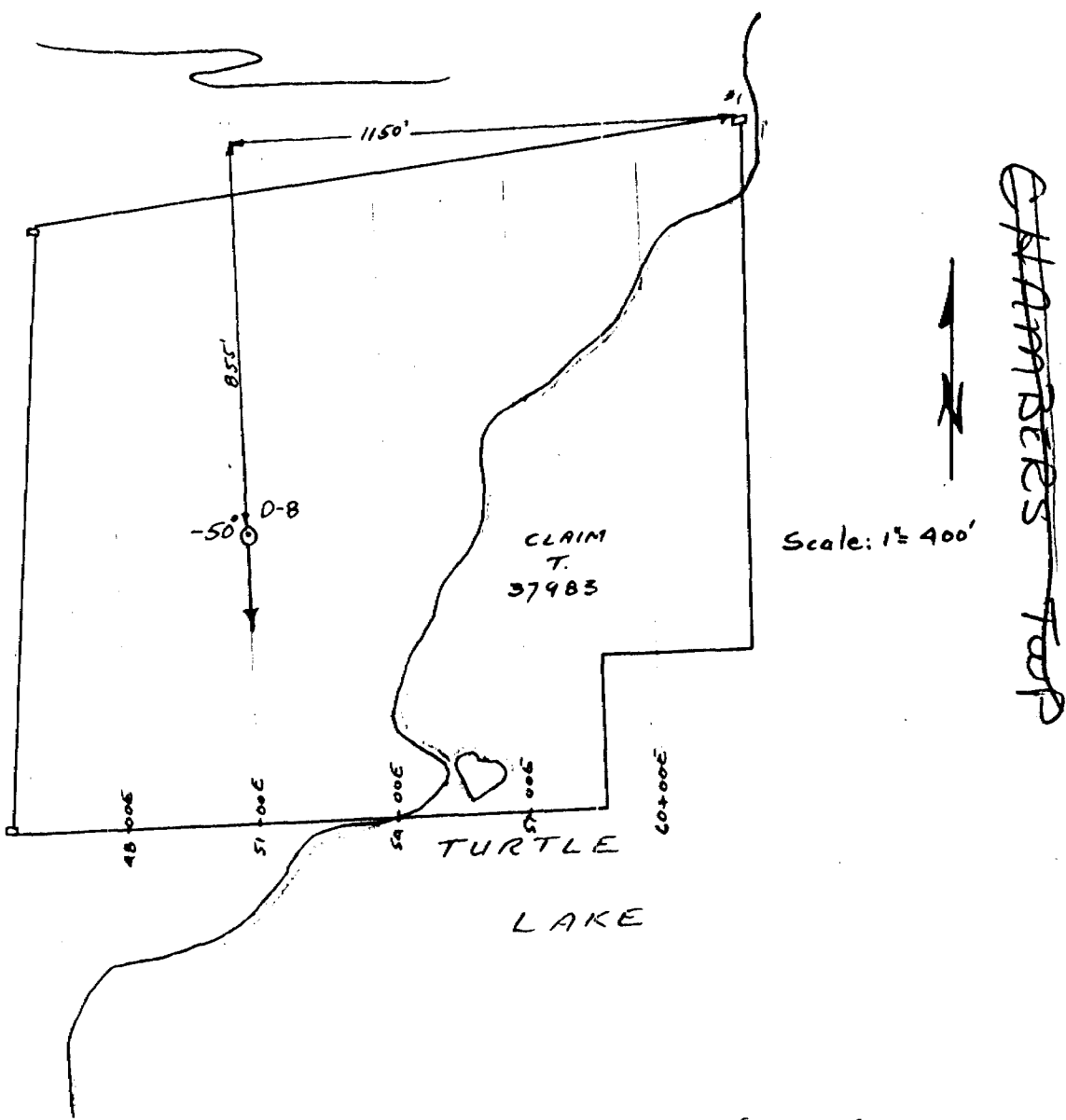
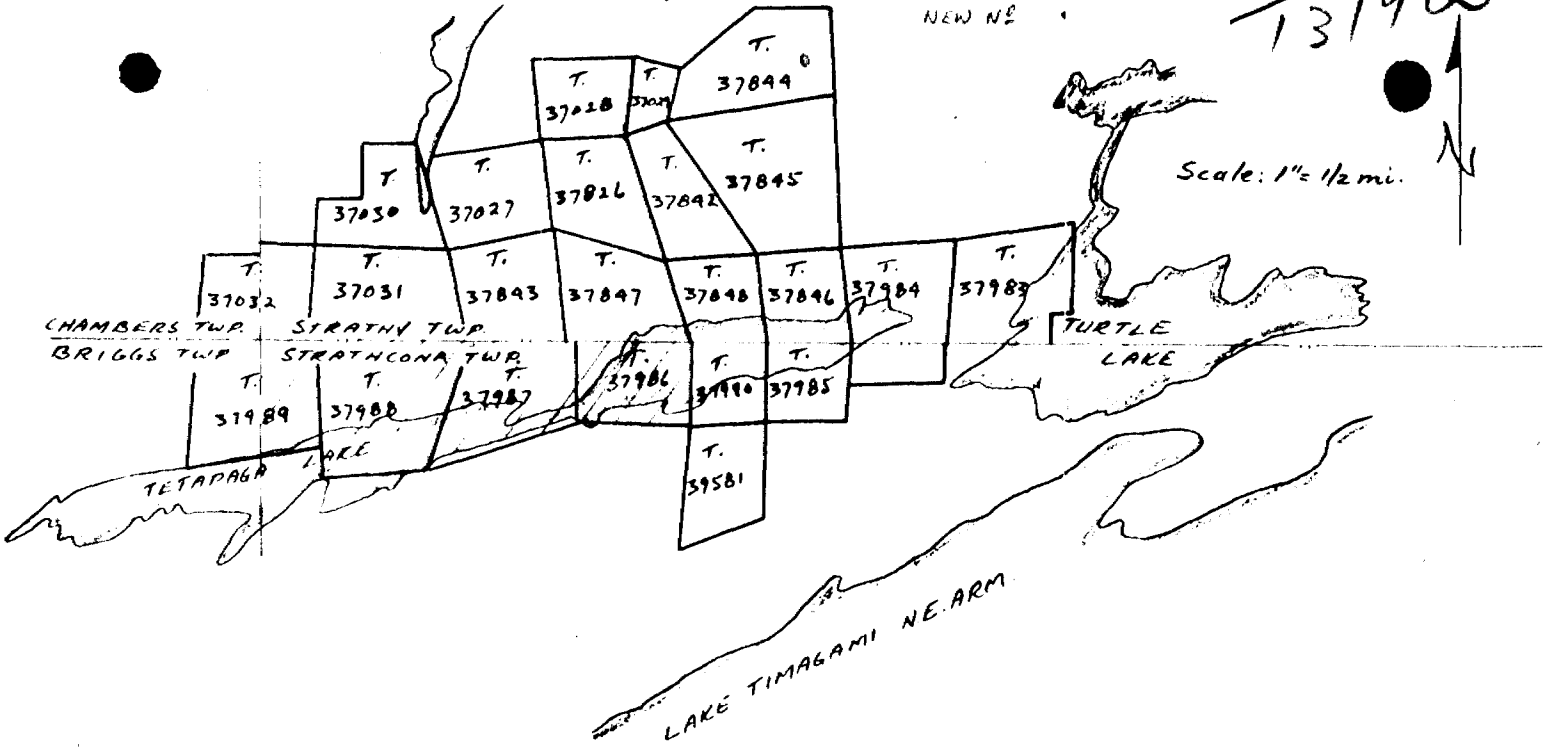
TIMISKAMING MINING DIVISION

STRATHY TWP

ONTARIO

OLD NO 12-1-94
NEW NO

137983



DIAMOND DRILL RECORD

Hole No. **22**

PROPERTY STRATHMORE MINES INCORPORATED
TRINCO Option, SW 10

Sheet No. **1**

Location: Claim No. **T. 37903**
 Lat. **61° 1' N**
 Dep. **14° 55' 00" E**
 Elevation of Collar _____
 Datum _____

Started **August 18, 1961**
 Completed **August 20, 1961**
 Ultimate Depth **301'**
 Proposed Depth _____

Direction at Start: Bearing **800°**
 Dip **-50°**

Date	Feet Drilled	Total Depth	Section			Remarks (Log)	Foliation Inclination	
			From	To	Feet			
18, 1961			0	6	6	Casing	12°-45°	
			6	12	6	Greywacke: grey, massive	41°-45°	
			12	58	46	Mixed black slate and greywacke, locally pyritic	78°-90°	
			58	70	12	Greywacke	92°-95°	
			70	127	57	Mixed black slate and greywacke, locally pyritic	212°-40°	
						85°-108° abundant narrow calcite veins.	130°-90°	
							176°-90°	
							191°-45°	
				127	143	16	Mixed greywacke and minor slate.	222°-90°
				143	154	11	Mixed greywacke and slate.	245°-90°
			154	301	147	Pyritic Yuff: 207°-214° poor core recovery	272°-90°	
				301		End of Hole.	299°-25°	

Drilled by **Boyles Bros. (Quebec) Limited**

E. R. Mead Jr.
 Engineer in Charge

E. R. Mead