

31M04SW0143 15 STRATHY

010

TOWNSHIP OF STRATHY REPORT NO. 15

This file contains work performed by ^{Tenagani} ~~Clenor-Tenagi~~ on claim:

T.50535

Hole # S-29

June/51

S-30

June/51

080' E. + 380' N.

DIAMOND DRILL RECORD

Hole No. 20 Sheet No. 1
 Property CLUBBING - 1901
 Drilled by Am. Dr. Co.
 Date Begun June 25th, 1951
 Date Finished June 30th, 1951
 Contractor's Footage

Co-ordinates Collar
 Lat. Dept.
 Elev. Collar
 Bearing South
 Angle 45°
 Working Place Claim TRT6033

Total Depth 260.0'
 Ft. of Core Recovered
 % Recovery
 Size Bit Used INT.
 Size Core

1964 - Claim T. 50535

| Depth Feet | Formation | Sample No. | Width | Ozs. Au. | Ozs. Ag. | % Cu. | % Ni. | % Zn. |
|----------------|---|------------|-------|----------|----------|-------|-------|-------|
| 0.0 6.0 | <u>CLUBBING</u> | | | | | | | |
| 6.0 21.7 | Gabbro with scattered sulphides - pyrrhotite and chalcopyrite | | | | | | | |
| 21.7 23.4 | Lost core | | | | | | | |
| 23.4 40.0 | Gabbro with disseminated sulphides | | | | | | | |
| 40.0 45.0 | Gabbro with disseminated sulphides | 49 | 5.0' | | | .13 | .04 | |
| 45.0 72.0 | Gabbro with disseminated sulphides | | | | | | | |
| 72.0 74.3 | Gabbro with disseminated sulphides | 50 | 2.3' | | | .18 | tr. | |
| 74.3 170.0 | Gabbro with disseminated sulphides | | | | | | | |
| 170.0 199.2 | Gabbro with disseminated sulphides | | | | | | | |
| 199.2 200.7 | Gabbro with chalcopyrite and pyrrhotite Sample | 51 | 1.5' | | | .15 | .32 | |
| 200.7 224.3 | Chalcopyrite and pyrrhotite in fine grains - gabbro | 52 | 2.6' | | | Nil | .43 | |
| 224.3 245.0 | Gabbro with disseminated sulphides | | | | | | | |
| 245.0 250.0 | Gabbro with disseminated sulphides | 53 | 5.0' | | | .16 | .12 | |
| 250.0 260.0 | Gabbro with disseminated sulphides | | | | | | | |
| | HOLE END - 260.0' | | | | | | | |

Log By *E. L. MacVeigh*
 for E. L. MacVEIGH

980' E. + 280' N.

DIAMOND DRILL RECORD

Hole No. **-30** Sheet No. **1**
 Property **Cleopatra**
 Drilled by **Inspiration**
 Date Begun **June 25th, 1951**
 Date Finished **June 30th, 1951**
 Contractor's Footage **277.0'**

Co-ordinates Collar
 Lat. Dept.
 Elev. Collar
 Bearing **South**
 Angle **45°**
 Working Place **Claim TRT6033**
1964 Claim T. 50535

Total Depth **277.0'**
 Ft. of Core Recovered
 % Recovery
 Size Bit Used **EXT.**
 Size Core

| Depth Feet | Formation | Sample No. | Width | Ozs. Au. | Ozs. Ag. | % Cu. | % Ni. | % Zn. |
|------------|---|------------|-------------|----------|------------|-------------|------------|-------------|
| 0.0 | CASING | | | | | | | |
| 10.0 | | | | | | | | |
| 10.0 | Gabbro with disseminated sulphides. | | | | | | | |
| 50.0 | | | | | | | | |
| 50.0 | Gabbro with disseminated sulphides | 36 | 5.0' | | | tr. | .02 | .10 |
| 55.0 | | | | | | | | |
| 55.0 | | | | | | | | |
| 64.0 | | | | | | | | |
| 64.0 | Well mineralized gabbro chalcopryrite and pyrrhotite | 37 | 3.0' | | | tr. | .23 | .10 |
| 67.0 | | | | | | | | |
| 67.0 | Gabbro with disseminated sulphides | | | | | | | |
| 103.0 | | | | | | | | |
| 103.0 | Gabbro with chalcopryrite and pyrrhotite | 38 | 2.0' | | | .48 | | .10 |
| 105.0 | | | | | | | | |
| 105.0 | Gabbro with pyrrhotite and chalcopryrite - one section massive pyrrhotite 5" long - some calcite | 39 | 5.0' | | | .46 | | nil |
| 110.0 | | | | | | | | |
| 110.0 | serpentinized gabbro with pyrrhotite and chalcopryrite | | | | | | | |
| 115.0 | | 40 | 5.0' | | | .23 | | N11 |
| 115.0 | Serpentinized gabbro - some sulphides | | | | | | | |
| 120.0 | | | | | | | | |
| 120.0 | Serpentinized gabbro with sulphides | | | | | | | |
| 125.0 | | 41 | 5.0' | | | .20 | .14 | N11 |
| 125.0 | Serpentinized gabbro - some sulphides | | | | | | | |
| 131.0 | | | | | | | | |
| 131.0 | Heavily mineralized gabbro, chiefly pyrrhotite | 32 | 4.0' | | .24 | .72 | .37 | 0.21 |
| 135.0 | | | | | | | | |
| 135.0 | Heavily mineralized gabbro with considerable chalcopryrite | 33 | 5.0' | | .64 | 1.96 | .28 | 0.31 |
| 140.0 | | | | | | | | |
| 140.0 | Heavily mineralized gabbro, chiefly pyrrhotite | 34 | 5.0' | | .22 | 0.44 | .40 | tr. |
| 145.0 | | | | | | | | |
| 145.0 | Well mineralized gabbro, pyrrhotite and chalcopryrite - some calcite quartz | 35 | 5.0' | | .56 | 1.88 | .35 | 0.36 |
| 150.0 | | | | | | | | |

Log By.....
 for E. L. MacVEIGH

DIAMOND DRILL RECORD

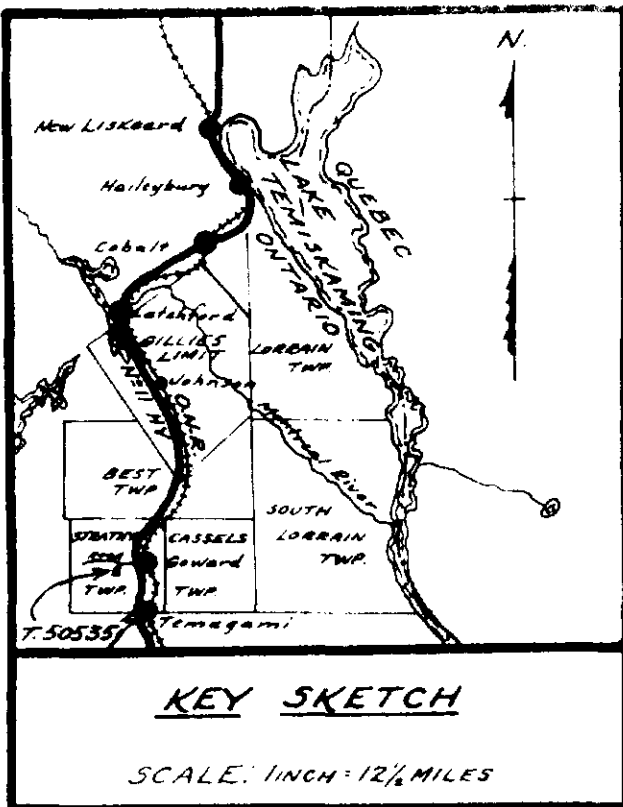
Hole No. 5-30 Sheet No. 2
 Property Clenor-Temagami
 Drilled by _____
 Date Begun _____
 Date Finished _____
 Contractor's Footage _____

Co-ordinates Collar
 Lat. _____ Dept. _____
 Elev. Collar _____
 Bearing _____
 Angle _____
 Working Place _____

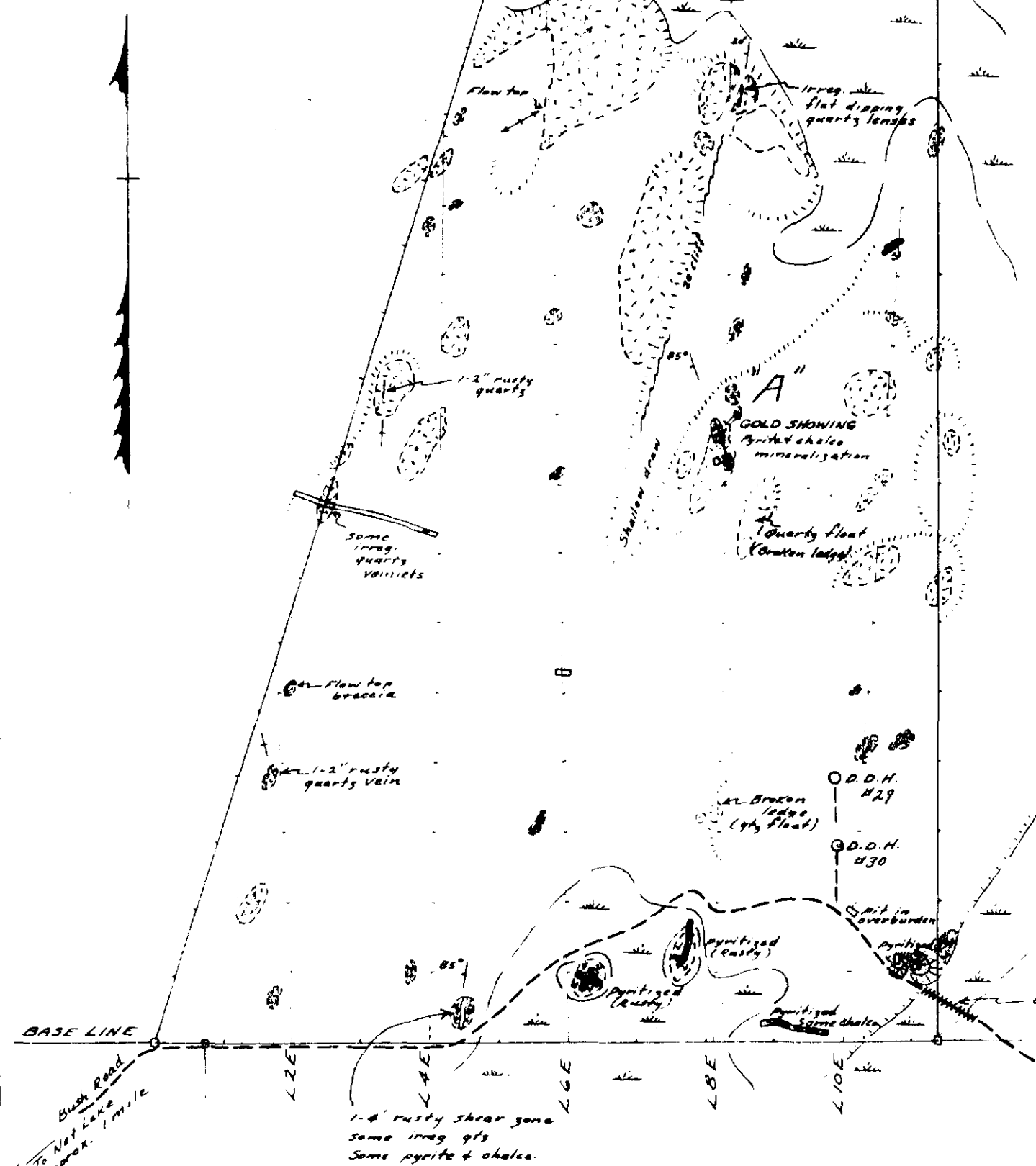
Total Depth _____
 Ft. of Core Recovered _____
 % Recovery _____
 Size Bit Used _____
 Size Core _____

| Depth Feet | Formation | Sample No. | Width | Ozs. Au. | Ozs. Ag. | % Cu. | % Ni. | % Zn. |
|------------------------------------|--|------------|-------|----------|----------|-------|-------|-------|
| 150.0 | Gabbro with disseminated sulphides | 42 | 5.0' | | | .16 | | Nil |
| 155.0 | | | | | | | | |
| 155.0 | Gabbro serpentinized - little sulphides | | | | | | | |
| 189.0 | | | | | | | | |
| 189.0 | Serpentinized gabbro with pyrrhotite and chalcopyrite | 43 | 5.0' | | | .29 | | .51 |
| 195.00 | | | | | | | | |
| 195.0 | Altered gabbro with considerable pyrrhotite and chalcopyrite | 44 | 5.0' | | | .34 | .43 | Nil |
| 200.0 | | | | | | | | |
| 200.0 | Sheared gabbro with chalcopyrite and pyrrhotite | 45 | 5.0' | | | .07 | | .05 |
| 205.0 | | | | | | | | |
| 205.0 | Sheared gabbro with chalcopyrite and pyrrhotite | 46 | 5.0' | | | tr. | | Nil |
| 210.0 | | | | | | | | |
| 210.0 | Sheared gabbro with chalcopyrite and pyrrhotite | 47 | 5.0' | | | .17 | | Nil |
| 215.0 | | | | | | | | |
| 215.0 | Sheared gabbro with chalcopyrite and pyrrhotite | 48 | 7.0' | | | .35 | | Nil |
| 222.0 | | | | | | | | |
| 222.0 | Gabbro - some silicified sections and some scattered sulphides | | | | | | | |
| 277.0 | | | | | | | | |
| HOLE END - 277.0 Feet | | | | | | | | |
| NOTE: Shear zone 200.9' to 222.0'. | | | | | | | | |
| | | | | | | | | |
| | | | | | | | | |
| | | | | | | | | |
| | | | | | | | | |
| | | | | | | | | |
| | | | | | | | | |
| | | | | | | | | |
| | | | | | | | | |
| | | | | | | | | |
| | | | | | | | | |
| | | | | | | | | |
| | | | | | | | | |
| | | | | | | | | |
| | | | | | | | | |
| | | | | | | | | |
| | | | | | | | | |
| | | | | | | | | |
| | | | | | | | | |

Log By. *[Signature]*
 for E. L. MacVEIGH



N.A.S.T.



LEGEND

- Quartz vein
- Mineralized zone
- Quartz porphyry
- Basic intrusive (Haileyburian?)
- Keewatin basic volcanics (Pillow lava, etc.)

Symbols

- Outcrop boundary
- Swamp and low ground boundary
- Swamp
- Trench or pit and dump
- Indicated fault
- Lower edge of rise in topography
- Claim post
- Picket line
- Claim line

GEOLOGY OF

MINING CLAIM T. 50535

STRATHY TOWNSHIP - TIMAGAMI AREA
TIMISKAMING MINING DIVISION - ONTARIO

To accompany report by E.L. MacVeigh B.A. M.S.
Scale: 1 inch = 200 feet



200



E. MacVeigh B.A., M.S.

Drawn by: A. Hammerstrom Nov 1963

1274