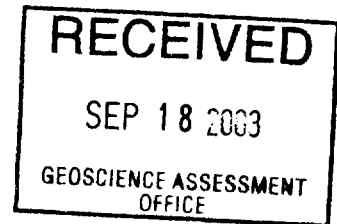


# Lowell Lake Area Prospecting Report

By

Neil Pettigrew, Temex Resources Corp.



September 15<sup>th</sup> 2003



31M04SW2061 2.26317

STRATHCONA

010

## Summary

On July 12<sup>th</sup> and 13<sup>th</sup> of 2003 reconnaissance prospecting was conducted on Temex's claims in the Lowell Lake area. The short program was conducted to confirm a bedrock presence of Au mineralization as indicated by several till samples previously collected by Temex, which were highly anomalous in Au. The program consisted of 16 grab samples collected over a ~1 km<sup>2</sup> area and analyzed for Au, Ag, Cu, and Zn (Map 1, Appendix A). All grab samples consisted of mafic volcanics, mostly pyrite altered +/- cm-scale quartz veining. (Appendix A). Rock exposure was good with most of the area covered by thin basal and/or ablation till. The program was performed by Richard Brett (license # E34096) and supervised by Neil Pettigrew of Temex Resources Corp. The Samples were shipped to Swastika Laboratories Ltd. for analysis on September 2<sup>nd</sup> and results were received on 6<sup>th</sup> (Appendix B). One sample returned 0.61g/t Au confirming the anomalous Au in the till samples is locally derived. All other samples returned negligible Au values. Also of note, is that the samples returned anomalous Cu-Zn values, up to 0.68 Cu and 0.18 Zn, suggesting the potential for VMS mineralization in the area.

## STATEMENT OF QUALIFICATIONS

I, Neil T. Pettigrew, of 409 Dufferin St. Thunder Bay Ontario, do hereby certify that:

- 1) I am a graduate of the University of New Brunswick, Hon. B.Sc. Environmental Geochemistry.
- 2) I am presently registered part time at the University of Ottawa studying for my M.Sc. in Earth Sciences.
- 3) I have worked in the mineral exploration industry during the summer since 1998.
- 4) This report on the Lowell Lake area is based on my personal examination of, and supervision of, the work in the area.

Dated in Gowganda, Ontario this 15<sup>th</sup> day of September, 2003.

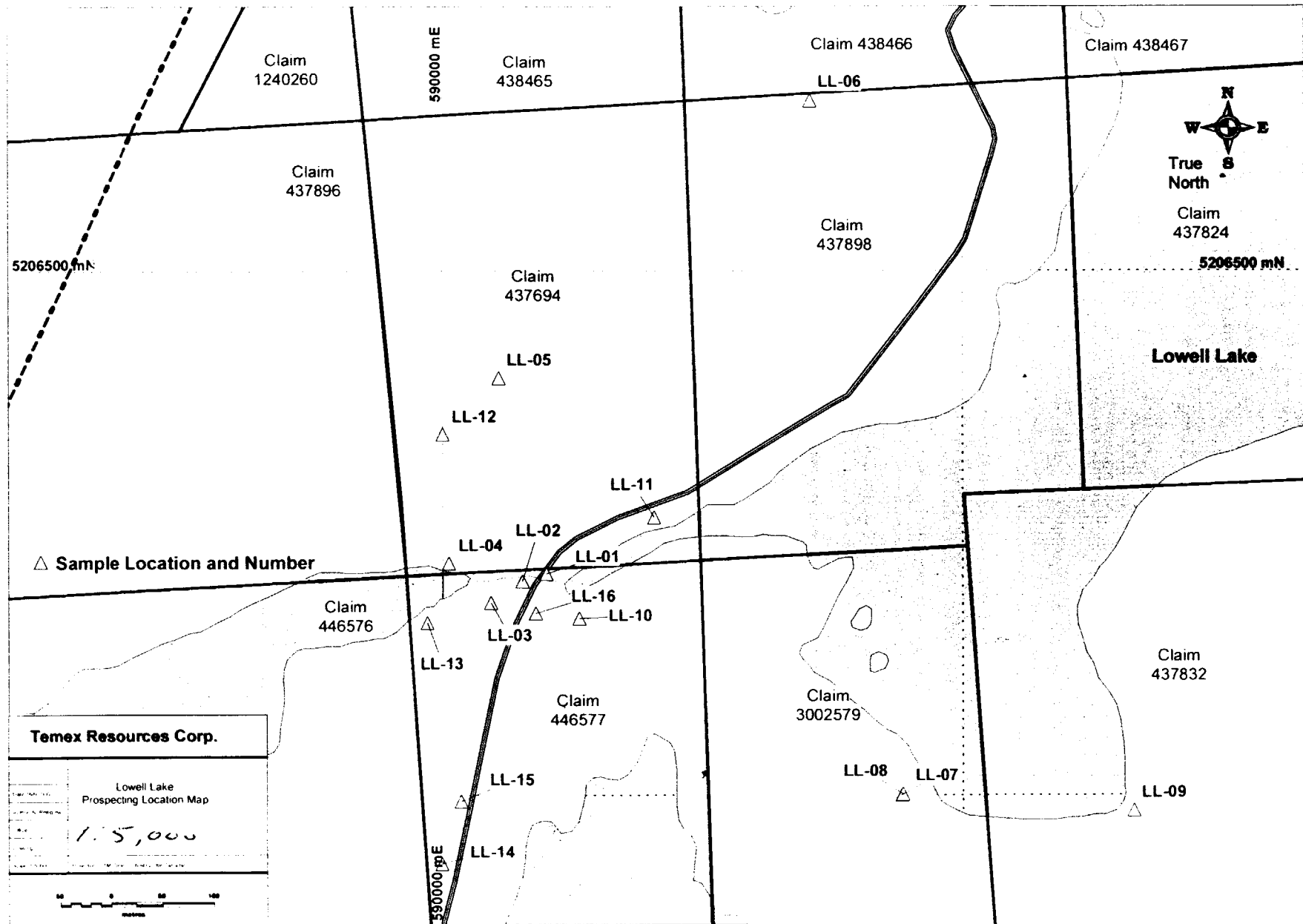


A handwritten signature in cursive script, reading "Neil Pettigrew", is written over a horizontal line.

Neil T. Pettigrew, Hon. B.Sc.

## **Map 1**

Prospecting Sample Location Map



## **Appendix A**

### Prospecting Sample Index

Sample #	NAD 27 Zone 17		Description	1st Assay	2nd Assay	Ag g/t	Cu ppm	Zn ppm
	Easting	Northing		Au g/t	Au g/t			
LL-01	590097.87	5206211.1	old pit calcopyrite puritite py. Qtz.	117	110	2.4	6760	1530
LL-02	590075.37	5206204.1	milky qtz. Flood py.	55-		0.4	77	104
LL-03	590045.66	5206183.4	3cm qtz. Vien calco. Py.	626	602	0.2	871	24
LL-04	590005.59	5206221.3	3cm qtz. vien flat 0/08 deg. North In conglomerate	Nil		0.1	13	33
LL-05	590053.24	5206397.8	aphenitic grey selicicious qtz. Claste py.	3-		0.1	62	77
LL-06	590353.4	5206662.3	mafic vol. Py.	5-		0.7	184	139
LL-07	590440	5206000	mafic vol. Py.	5-		0.3	42	122
LL-08	590441	5206001	mafic vol. Py.	5-		0.4	70	35
LL-09	590664.74	5205985.2	mafic vol. Py.qtz.boulder	7-		0.1	18	51
LL-10	590128.93	5206168.5	mafic vol.old pit py. 10% sulphide	79	93	1.6	1370	685
LL-11	590201.18	5206265	mafic vol.old pit py.	122-		4.9	325	315
LL-12	589999.8	5206344.4	selicified area of conglomerate py.	7-		0.1	41	74
LL-13	589984.56	5206164.5	mafic vol. 1% py.	2-		0.2	50	125
LL-14	589998.5	5205934.8	mafic vol. Py.	12-		0.5	488	48
LL-15	590017.18	5205994.1	mafic vol.selicified area with qtz. Py.	5-		0.3	60	92
LL-16	590087.87	5206173.3	py. Pyritite 10% sulfides qtz. Boulder	45-		2.9	164	1750

## **Appendix B**

Assay Certificate





# Swastika Laboratories Ltd

Assaying - Consulting - Representation

## Geochemical Analysis Certificate

3W-2788-RG1

Company: **TEMEX RESOURCES CORPORATION**

Date: SEP-05-03

Project:

Anal: I. Campbell

We hereby certify the following Geochemical Analysis of 16 Grab samples submitted SEP-03-03 by .

Sample Number	Au PPB	Au Check PPB	Ag PPM	Cu PPM	Zn PPM
LL-01	117	110	2.4	6760	1530
LL-02	57	-	0.4	77	104
LL-03	626	602	0.2	871	24
LL-04	N11	-	0.1	13	33
LL-05	3	-	0.1	62	77
LL-06	5	-	0.7	184	139
LL-07	5	-	0.3	42	122
LL-08	8	-	0.4	70	35
LL-09	7	-	0.1	18	51
LL-10	79	93	1.6	1370	685
LL-11	112	-	4.9	325	315
LL-12	7	-	0.1	41	74
LL-13	2	-	0.2	50	125
LL-14	12	-	0.5	486	48
LL-15	5	-	0.3	60	92
LL-16	48	-	2.9	167	1750
Blank	N11	-	-	-	-
STD TT-13	579	-	-	-	-

Certified by

1 Cameron Ave., P.O. Box 10, Swastika, Ontario P0K 1T0  
Telephone (705) 642-3244 Fax (705) 642-3300

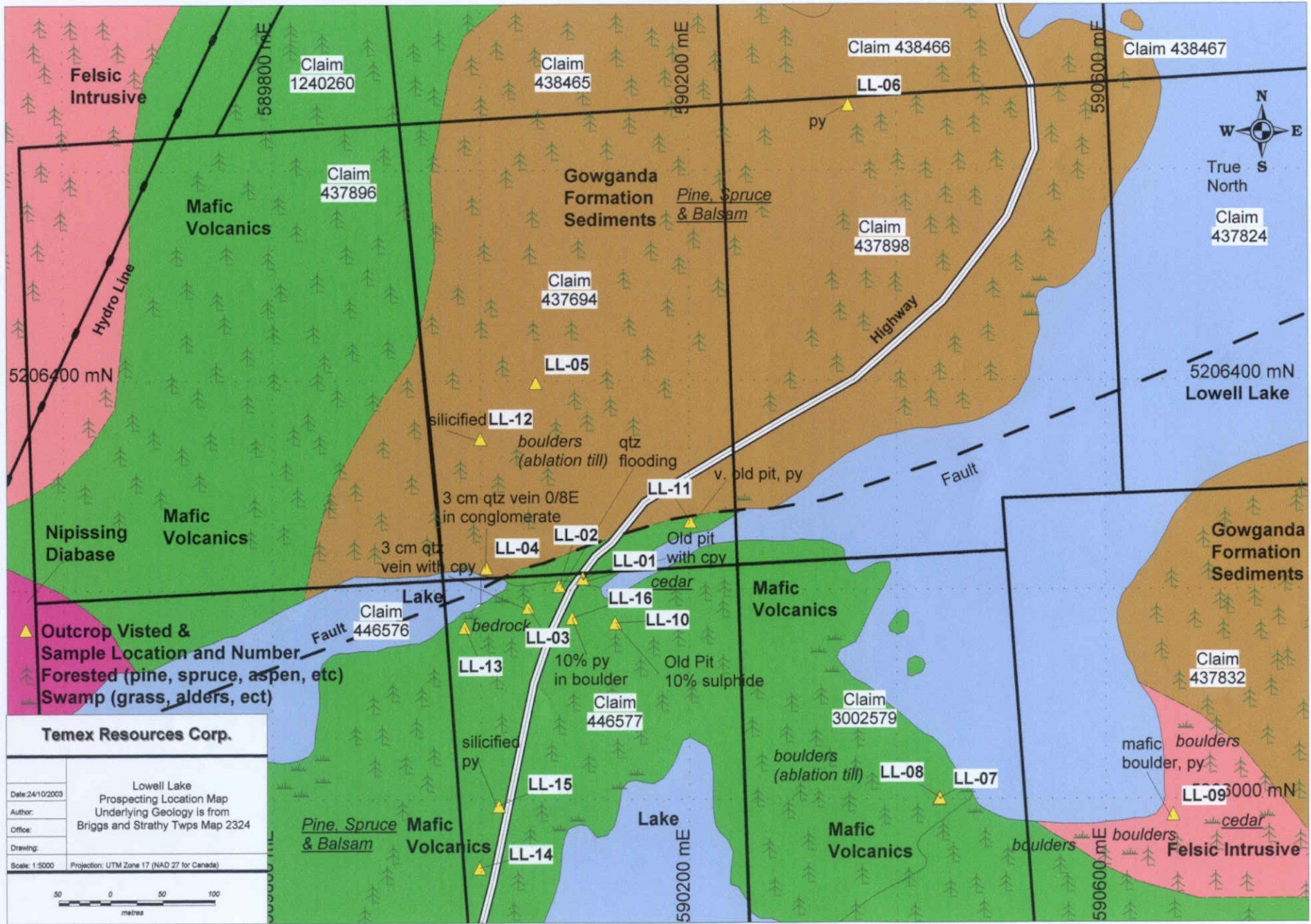
Swastika Laboratories Ltd.  
 P.O. Box 10, 1 Cameron Ave.,  
 Swastika, Ontario P0K 1T0  
 Tel: (705) 642-3244  
 Fax: (705) 642-3300  
 E-Mail: swaslab@nt.net

**Invoice**

DATE	INVOICE #
9/5/2003	5838

To:  
 TEMEX RESOURCES CORP.  
 SUITE 1000  
 141 ADELAIDE STREET WEST  
 TORONTO, ONTARIO  
 M5H 3L5

P.O. NO.		TERMS		PROJECT #	
QTY	DESCRIPTION	CERT#	RATE	AMOUNT	
16	Au	3W-2788-RG1	10.25	164.00T	
16	Ag		1.50	24.00T	
16	Cu		1.50	24.00T	
16	Zn		1.50	24.00T	
	Business Number: RT883022329				
			GST	16.52	
<b>TOTAL</b>				<b>\$252.52</b>	



▲ Outcrop Visted &  
 Sample Location and Number  
 Forested (pine, spruce, aspen, etc)  
 Swamp (grass, alders, ect)

**Temex Resources Corp.**

Lowell Lake  
 Prospecting Location Map  
 Underlying Geology is from  
 Briggs and Strathy Twps Map 2324

Date: 24/10/2003  
 Author:  
 Office:  
 Drawing:  
 Scale: 1:5000 Projection: UTM Zone 17 (NAD 27 for Canada)



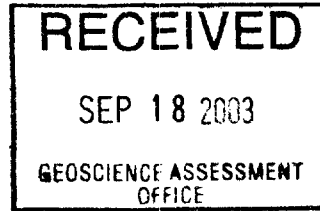
True North  
 Claim 437824

5206400 mN  
 Lowell Lake

52063000 mN  
 cedar

2.26317

NTS 31 M/4



**MAGNETOMETER SURVEY REPORT**  
WITH A REPORT ON RE-CUTTING CLAIM BOUNDARIES

**LOWELL LAKE PROPERTY**

*Strathcona Township*  
**Temex Resources Corp.**  
*Sept. 2003*

(with a

David Laronde 15/09/03

TABLE OF CONTENTS

1.0	Introduction
2.0	Property
3.0	Location and Access
4.0	Magnetometer Survey
4.1	Instrumentation
4.2	Survey Results
5.0	Conclusions and Recommendations

LIST OF FIGURES

Figure 1     Claim and Location Map

LIST OF MAPS

**Magnetometer survey - total field contours**

1:5000

APPENDIX

Recutting claimlines report and map



**1.0 INTRODUCTION:**

On Sept 15 and 16, 2003, a magnetometer survey was conducted over the Lowell Lake Property held by Temex Resources Corp., 141 Adelaide St. West Suite 1000, Toronto, Ontario M5H 3L5. The work was executed by David and Carolyn Laronde and reported on by David Laronde of Meegwich Consultants Inc., P.O. Box 482, Temagami, Ontario P0H 2H0.

The surveying was done to detail significant, controlling structure that relate to the placement of diamond bearing intrusive rock.

**2.0 PROPERTY:**

The property consists of a group of contiguous claims (35 units) that cover Lowell Lake situated in Strathcona Townships. The claims worked on are as follows:

437824	1 unit
437831	"
437832	"
437898	"
438466	"
438467	"
1221583	13 units

1221581	10 units
3002579	2 units
3004581	2 units
3004580	2 units

**3.0 LOCATION AND ACCESS:**

As the crow flies the property is located 6 km south of the town of Temagami. Temagami is 100 km north of the city of North Bay and is 450 km due north of Toronto.

The claims can be accessed by taking the Lowell Lake road for 2 km eastward from Hwy 11.

**4.0 MAGNETOMETER SURVEY:**

A total of 9.15 km was surveyed (450 readings) from a non-magnetic canoe. The magnetometer was used in walking mode where the unit reads at 2 second intervals. The watercraft was kept at a constant speed to allow for station interpolation. A GPS unit was used to track the watercraft on course.

**4.1 Instrumentation:** Gem Systems Overhauser GSM-19 V5.0 magnetometers were used for the survey (ser. No. 712776 and 58479). A base station was set up near the property to monitor and correct for the diurnal variation during the course of the survey. These instruments are



micro-processor based and measure the earth's total magnetic field to an accuracy of one-hundredth of a gamma.

**4.2 Survey Results:** The results are presented in contour format at 1:5000 scale.

The range of values encountered during the survey is 56,464 to 56,838 nT which means that there are no intense responses but rather a gradual increase in readings from south to north.

The most obvious feature, centered on L 591000 E, appears to be a mafic intrusive with a with an intensity of 100 to 300 nT above a background of 56,500 nT. The high continues off to the north and is well defined. The length is 500 meters while the width is 200 meters.

To the south of the aforementioned high is an east west trending area that is forms a magnetic low. As expected, this expression emulates a fault structure called the Lowell Lake Fault. A mapped splay off this fault would enter the surveyed area from the west at 590700 E at 5206850 N.

An isolated high in the extreme southwest corner is noted.

#### **5.0 CONCLUSIONS AND RECOMMENDATIONS:**

The survey was successful in detecting a mafic body that may be occurring along structure. Lowell Lake is at the junction of three interesting faults. Evidence of a mafic intrusive occurring near these

faults is encouraging. This suggests there is a zone of weakness that intrusives may follow.

**Further work:** The mafic high should be drill tested for kimberlite however a resistivity comparison with maxmin should be done prior to drilling.

end

**References**

1966 Geological Map Ontario Department of Mines - Sudbury-Cobalt  
Geological Compilation Series- Map 2361 1 in to 4 miles or 1:250,000

1969 Geological Map Ontario Geologic Survey Briggs and Strathcona  
Twps. Map 2324 1in to ½ mile or 1:31,680

appendix

**RECUTTING CLAIMLINES REPORT**

**Sept. 17, 2003.**

**Lowell Lake Property - Strathcona Twp.**

On Sept 15, 16, 17 2003 claim lines were re-cut on the Lowell Lake Property held by Temex Resources. The purpose of the re-cutting was to re-establish claim boundaries of 27 year old claims that date back to 1976. Evidence of the original staking was very scarce so the majority of the work was done with the aid of GPS units. The staking regulations were followed using blazing and flagging to mark the lines.

The claims are situated in the center of Strathcona Twp. and easily accessed by Hwy 11 and the Lowell Lake Road which cut the claims.

A total of 16 claim lengths were re-cut as indicated on the accompanying map. The re-cut boundaries are on the following claim numbers:

437896	437894	437898	437824	43783
446577	446576	437897	446560	

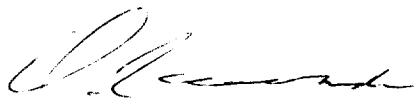
The cost for this work is \$60/claim length X 16 lengths = \$960  
end

**CERTIFICATE OF AUTHOR**

I, David Laronde of the town of Temagami, Ontario hereby certify:

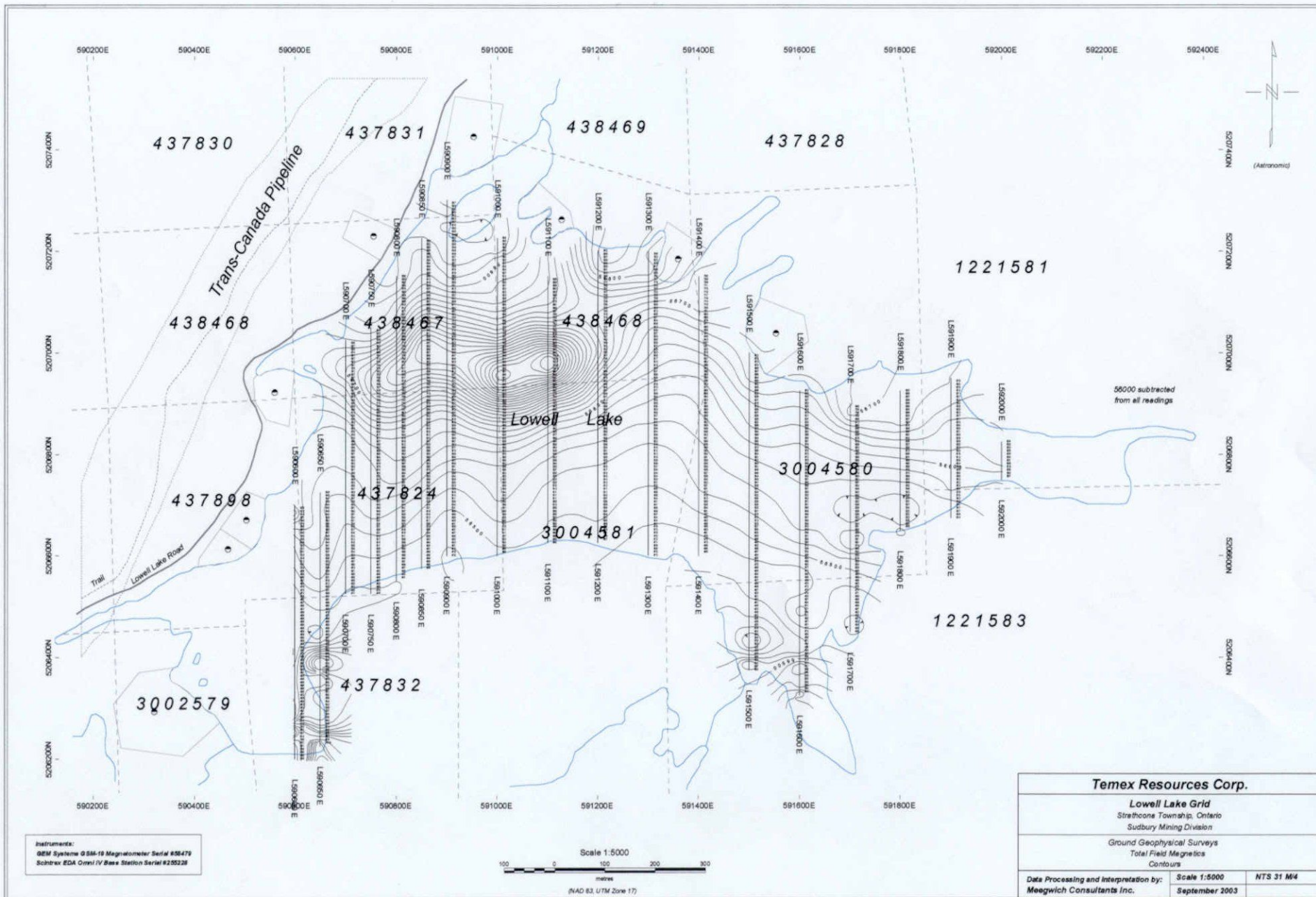
1. That I am a geology technologist and have been engaged in mineral exploration for the past 23 years.
2. That I am a graduate of Cambrian College in Sudbury with a diploma in Geology Engineering Technology 1979.
3. That my knowledge of the property described herein was acquired by field work and documentation.

Dated at Temagami this 16th day of September 2003.



---

David Laronde

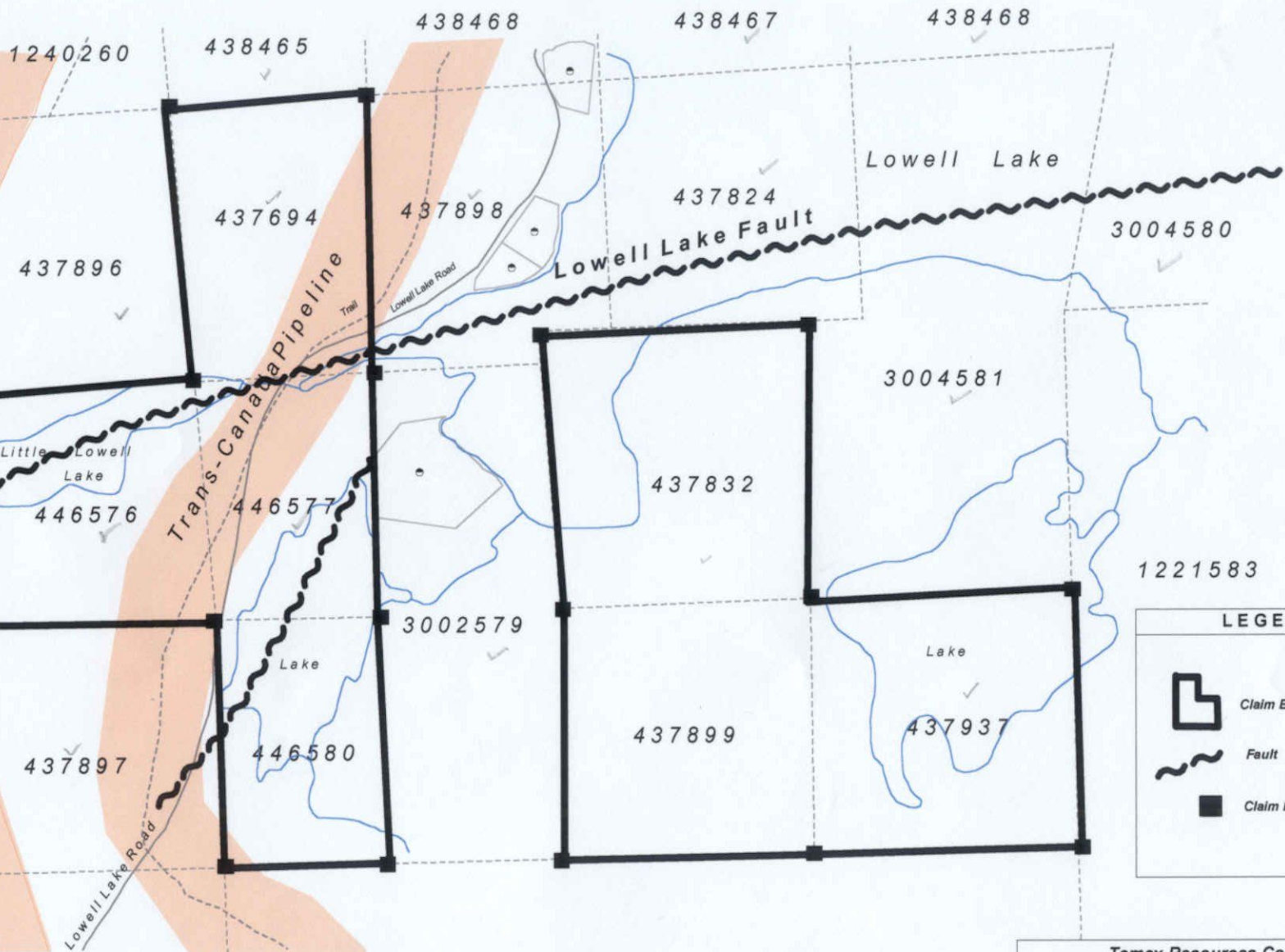


Instruments:  
 GEM Systems Q 586-19 Magnetometer Serial #58479  
 Schlöter EDA Omni IV Base Station Serial #255226




<b>Temex Resources Corp.</b>		
<b>Lowell Lake Grid</b> Strathcove Township, Ontario Sudbury Mining Division		
Ground Geophysical Surveys Total Field Magnetics Contours		
Data Processing and Interpretation by:	Scale 1:5000	NTS 31 M/4
Meegwich Consultants Inc.	September 2003	

5207000N  
5206800N  
5206600N  
5206400N  
5206200N  
5206000N  
5205800N  
5205600N

589600E 589800E 590000E 590200E 590400E 590600E 590800E 591000E



**LEGEND**

-  Claim Boundary (re-cut)
-  Fault
-  Claim Post

**Temex Resources Corp.**

Lowell Lake Grid  
 Strathcona Township, Ontario  
 Sudbury Mining Division

**CLAIM BOUNDARY**

Data Processing and Interpretation by: Meegwich Consultants Inc.	Scale 1:5000 September 2003	NTS 31 M/4
---	--------------------------------	------------





## Work Report Summary

Transaction No: W0370.01480 Status: APPROVED  
 Recording Date: 2003-SEP-17 Work Done from: 2003-JUL-12  
 Approval Date: 2003-NOV-03 to: 2003-SEP-16

Client(s):  
 303055 TEMEX RESOURCES CORP.

Survey Type(s):

ASSAY MAG PRECUT PROSP

**Work Report Details:**

Claim#	Perform	Perform Approve	Applied	Applied Approve	Assign	Assign Approve	Reserve	Reserve Approve	Due Date
S 437694	\$263	\$263	\$0	\$0	\$263	263	\$0	\$0	2003-SEP-17
S 437697	\$0	\$0	\$400	\$400	\$0	0	\$0	\$0	2004-SEP-17
S 437698	\$0	\$0	\$400	\$400	\$0	0	\$0	\$0	2004-SEP-17
S 437699	\$0	\$0	\$400	\$400	\$0	0	\$0	\$0	2004-SEP-17
S 437700	\$0	\$0	\$400	\$400	\$0	0	\$0	\$0	2004-SEP-17
S 437824	\$482	\$482	\$0	\$0	\$78	78	\$404	\$404	2006-SEP-17
S 437832	\$181	\$181	\$0	\$0	\$181	181	\$0	\$0	2003-SEP-17
S 437896	\$120	\$120	\$800	\$800	\$0	0	\$0	\$0	2005-SEP-17
S 437897	\$120	\$120	\$0	\$0	\$120	120	\$0	\$0	2004-SEP-17
S 437898	\$164	\$164	\$0	\$0	\$164	164	\$0	\$0	2006-SEP-17
S 437937	\$120	\$120	\$0	\$0	\$120	120	\$0	\$0	2003-SEP-17
S 438465	\$60	\$60	\$0	\$0	\$60	60	\$0	\$0	2007-SEP-17
S 438467	\$277	\$277	\$0	\$0	\$277	277	\$0	\$0	2007-SEP-17
S 438468	\$192	\$192	\$0	\$0	\$192	192	\$0	\$0	2003-SEP-16
S 446576	\$60	\$60	\$0	\$0	\$60	60	\$0	\$0	2003-SEP-17
S 446577	\$593	\$593	\$0	\$0	\$593	593	\$0	\$0	2003-SEP-17
S 446581	\$0	\$0	\$800	\$800	\$0	0	\$0	\$0	2005-SEP-17
S 1221581	\$57	\$57	\$0	\$0	\$57	57	\$0	\$0	2003-OCT-05
S 1221583	\$95	\$95	\$0	\$0	\$95	95	\$0	\$0	2003-OCT-05
S 3002579	\$246	\$246	\$0	\$0	\$86	86	\$160	\$160	2004-OCT-04
S 3004578	\$120	\$120	\$0	\$0	\$120	120	\$0	\$0	2004-OCT-04
S 3004580	\$363	\$363	\$0	\$0	\$363	363	\$0	\$0	2004-OCT-04
S 3004581	\$251	\$251	\$0	\$0	\$251	251	\$0	\$0	2004-OCT-04
	\$3,764	\$3,764	\$3,200	\$3,200	\$3,080	\$3,080	\$564	\$564	

External Credits: \$0

Reserve: \$564 Reserve of Work Report#: W0370.01480

\$564 Total Remaining

Status of claim is based on information currently on record.



Date: 2003-NOV-03

GEOSCIENCE ASSESSMENT OFFICE  
933 RAMSEY LAKE ROAD, 6th FLOOR  
SUDBURY, ONTARIO  
P3E 6B5

TEMEX RESOURCES CORP.  
1000-141 ADELAIDE ST W  
TORONTO, ONTARIO  
M5H 3L5 CANADA

Tel: (888) 415-9845  
Fax: (877) 670-1555

**Submission Number:** 2.26317  
**Transaction Number(s):** W0370.01480

Dear Sir or Madam

**Subject: Approval of Assessment Work**

We have approved your Assessment Work Submission with the above noted Transaction Number(s). The attached Work Report Summary indicates the results of the approval.

At the discretion of the Ministry, the assessment work performed on the mining lands noted in this work report may be subject to inspection and/or investigation at any time.

The revisions outlined in the Notice dated September 19, 2003 have been corrected. Accordingly, assessment work credit has been approved as outlined on the Declaration of Assessment Work Form that accompanied this submission.

If you have any question regarding this correspondence, please contact BRUCE GATES by email at [bruce.gates@ndm.gov.on.ca](mailto:bruce.gates@ndm.gov.on.ca) or by phone at (705) 670-5856.

Yours Sincerely,



Ron C. Gashinski  
Senior Manager, Mining Lands Section

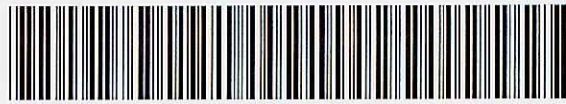
**Cc:** Resident Geologist

David Dennis Laronde  
(Agent)

Temex Resources Corp.  
(Assessment Office)

●  
Assessment File Library

Temex Resources Corp.  
(Claim Holder)



31M04SW2061 2.26317 STRATHCONA

200

ONTARIO  
CANADA

MINISTRY OF NORTHERN  
DEVELOPMENT AND MINES  
PROVINCIAL MINING  
RECORDERS' OFFICE

Mining Land Tenure  
Map

Date / Time of Issue: Thu Nov 06 10:30:59 EST 2003

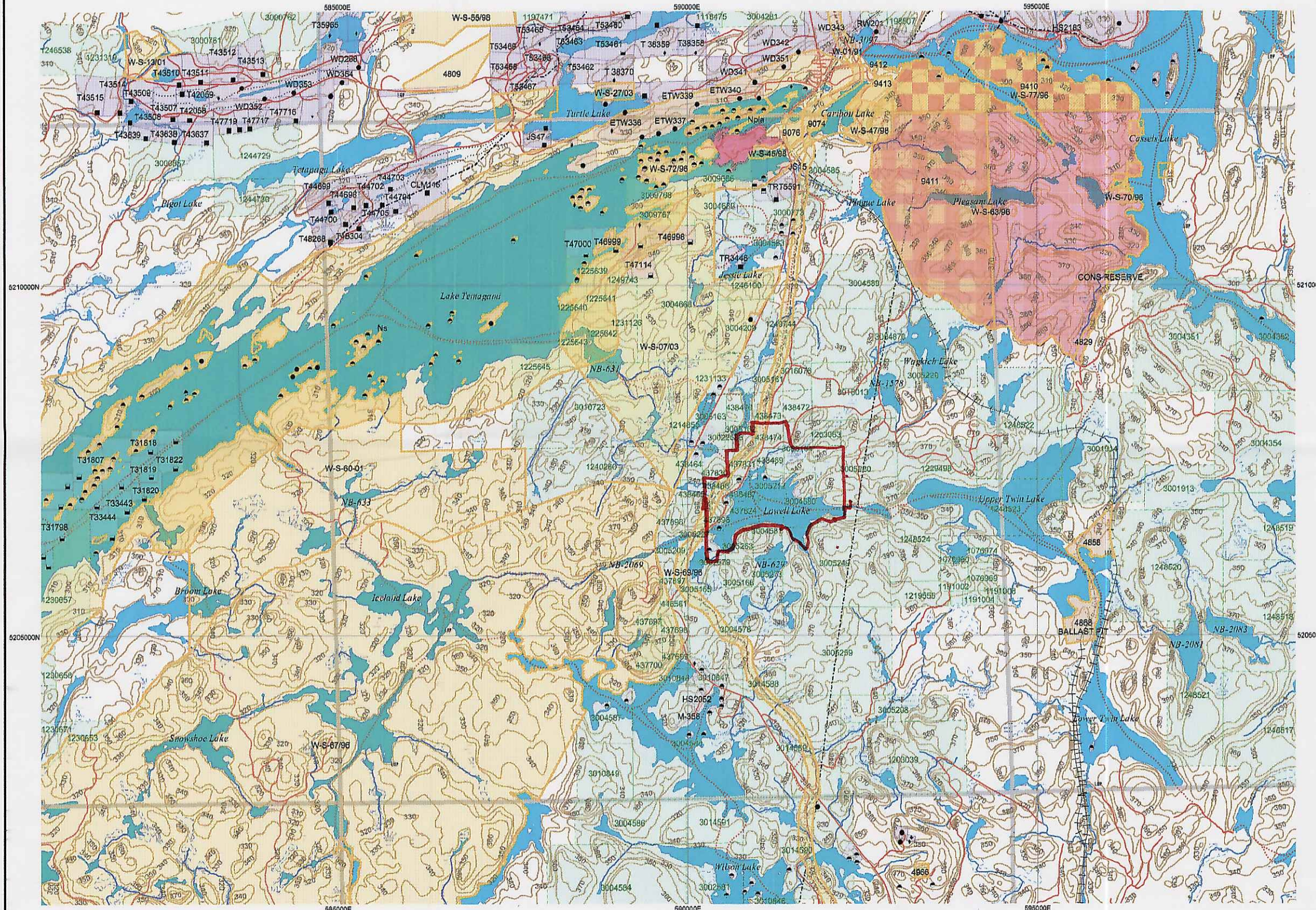
TOWNSHIP / AREA  
STRATHCONA

PLAN  
G-3450

ADMINISTRATIVE DISTRICTS / DIVISIONS

Mining Division  
Land Titles/Registry Division  
Ministry of Natural Resources District

Sudbury  
NIPISSING  
NORTH BAY

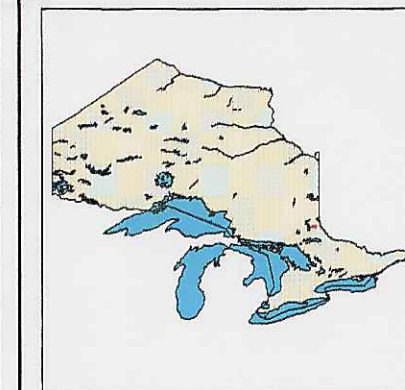


TOPOGRAPHIC

- Administrative Boundaries
- Township
- Concession Lot
- Provincial Park
- Indian Reserve
- Cliff, Pill & Pile
- Contour
- Mine Shafts
- Mine Headframe
- Railway
- Road
- Trail
- Natural Gas Pipeline
- Utilities
- Tower

Land Tenure

- Freehold Patent**
  - Surface And Mining Rights
  - Surface Rights Only
  - Mining Rights Only
- Leasehold Patent**
  - Surface And Mining Rights
  - Surface Rights Only
  - Mining Rights Only
- Licence of Occupation**
  - Uses Not Specified
  - Surface And Mining Rights
  - Surface Rights Only
  - Mining Rights Only
  - Land Use Permit
  - Order In Council (Not open for staking)
  - Water Power Lease Agreement



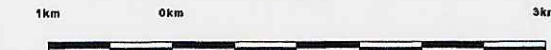
LAND TENURE WITHDRAWALS

- 1234 Areas Withdrawn from Disposition
- Mining Acts Withdrawal Types
  - Wsm Surface And Mining Rights Withdrawn
  - Ws Surface Rights Only Withdrawn
  - Wm Mining Rights Only Withdrawn
- Order In Council Withdrawal Types
  - W'sm Surface And Mining Rights Withdrawn
  - W's Surface Rights Only Withdrawn
  - W'm Mining Rights Only Withdrawn

IMPORTANT NOTICE

Ns

Scale 1:62140



0.26317  
PROSP  
PRECUT  
MAG  
ASSAY

Those wishing to stake mining claims should consult with the Provincial Mining Recorders' Office of the Ministry of Northern Development and Mines for additional information on the status of the lands shown hereon. This map is not intended for navigational, survey, or land title determination purposes as the information shown on this map is compiled from various sources. Completeness and accuracy are not guaranteed. Additional information may also be obtained through the local Land Titles or Registry Office, or the Ministry of Natural Resources.

The information shown is derived from digital data available in the Provincial Mining Recorders' Office at the time of downloading from the Ministry of Northern Development and Mines web site.

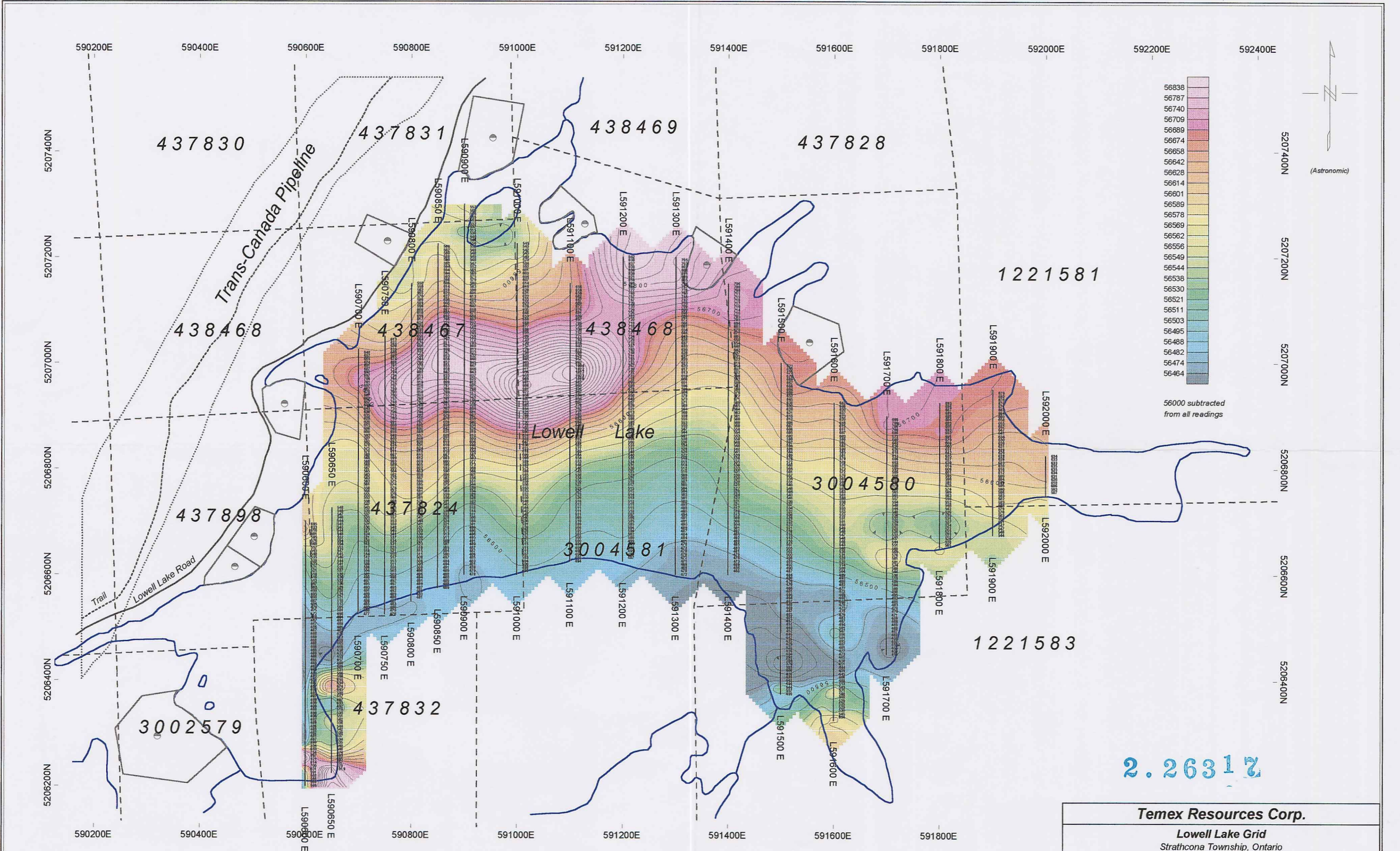
General Information and Limitations

Contact Information:  
Provincial Mining Recorders' Office  
Willet Green Miller Centre 933 Ramsey Lake Road  
Sudbury ON P3E 6S5  
Home Page: [www.mdm.gov.on.ca/MNDMMINES/LANDS/mlsnpnge.htm](http://www.mdm.gov.on.ca/MNDMMINES/LANDS/mlsnpnge.htm)

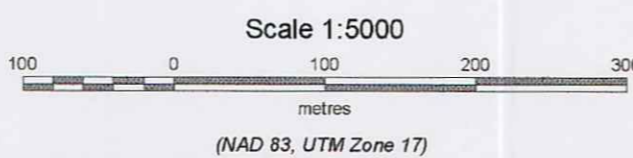
Toll Free  
Tel: 1 (888) 415-9845 ext 578  
Fax: 1 (877) 670-1444

Map Datum: NAD 83  
Projection: UTM (6 degree)  
Topographic Data Source: Land Information Ontario  
Mining Land Tenure Source: Provincial Mining Recorders' Office

This map may not show unregistered land tenure and interests in land including certain patents, leases, easements, right of ways, flooding rights, licences, or other forms of disposition of rights and interest from the Crown. Also certain land tenure and land uses that restrict or prohibit free entry to stake mining claims may not be illustrated.



Instruments:  
 GEM Systems GSM-19 Magnetometer Serial #58479  
 Scintrex EDA Omni IV Base Station Serial #255228

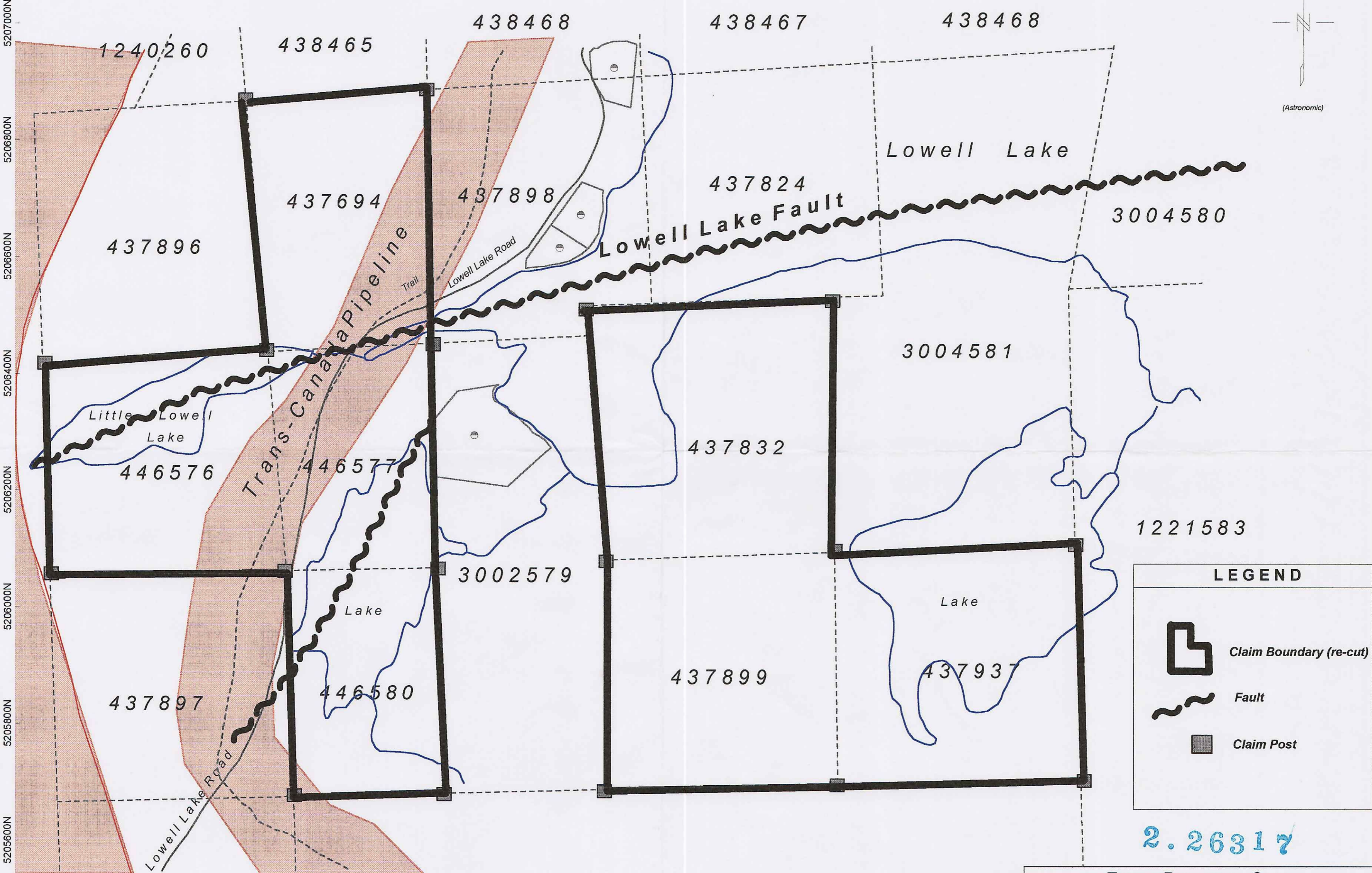
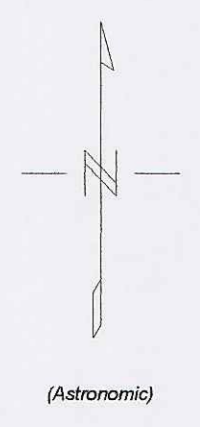


<b>Temex Resources Corp.</b>		
<b>Lowell Lake Grid</b>		
Strathcona Township, Ontario Sudbury Mining Division		
Ground Geophysical Surveys Total Field Magnetics Contours		
Data Processing and Interpretation by: Meegwich Consultants Inc.	Scale 1:5000 September 2003	NTS 31 M/4






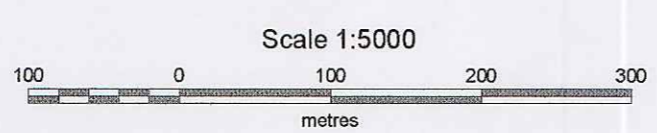
5207000N  
5206800N  
5206600N  
5206400N  
5206200N  
5206000N  
5205800N  
5205600N

589600E 589800E 590000E 590200E 590400E 590600E 590800E 591000E



**LEGEND**

-  Claim Boundary (re-cut)
-  Fault
-  Claim Post



**Temex Resources Corp.**

Lowell Lake Grid  
Strathcona Township, Ontario  
Sudbury Mining Division

**CLAIM BOUNDARY**

Data Processing and Interpretation by: Meegwich Consultants Inc.	Scale 1:5000 September 2003	NTS 31 M/4
---	--------------------------------	------------

