



31M05NE0137 13 LORRAINE

010

Diamond Drilling

Township OF LORRAINE

Report N^o: 13

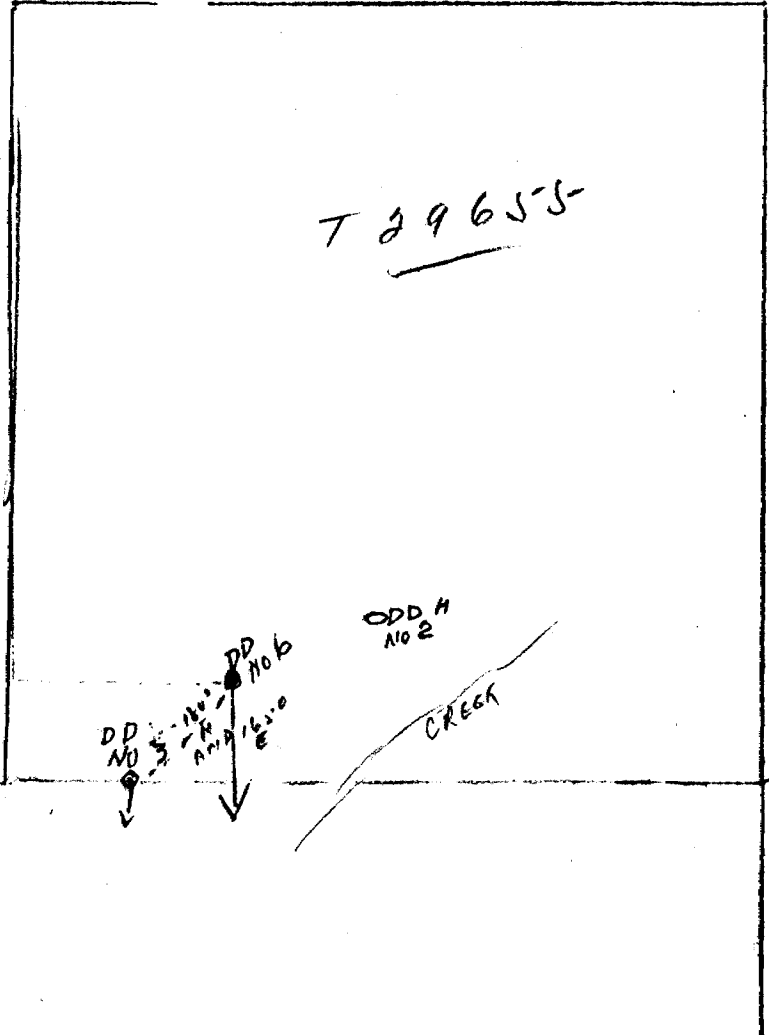
Work performed by: W. E. Brown

Claim N ^o	Hole N ^o	Footage	Date	Note
T.29657	1	160'	July-Aug/51	
T.29655	2	155'	1951	
	4	321'	1952	
	5	229'	1952	
	6	409'	Nov/55	
T.29656	3	112'	1951	

6/1386'

Notes:

T 29655-



DD
NO 5
↓

DD
NO 6
↓

ODD H
NO 2

CREEK

Top of core drilled from Claims of W.E. Brown Licence
No. B19353 Temiskaming Mining Division, Ontario.
July - August 1951.
($\frac{7}{8}$ " core)

Hole No. 1

Claim No. 29657

In S.E. section.

40° Angle - Depth 160 ft. To explore under surface pit.

0' - 160' - Generally coarse Nipissing Diabase
with fine and medium grained phases
throughout hole.

At 79' - 3" pink calcite - No Mineralization.

At 84' - 10" --- 2" pink calcite - some pyrite
mineralization.

At 88' - 4" --- 4" reddish altered diabase
with 1" calcite in centre
containing 10% pyrite.

At 123' - 6" --- 2" mixture of diabase and
calcite - some coarse pyrite.

At 122' - 1" white calcite.

At 142' - 6" --- 2" white calcite with 20% pyrite.

At 143' - 6" --- 2" white calcite 30% pyrite.

143' - 6" to 160' --- Diabase.

Hole No. 2

Claim No. 29657⁵

Approx. 280' North of South line and 625' East of West line
of claim.

Drilled N20°E Mag. at 50° dip to explore
under surface rock trench in
which is a 4" to 6" calcite -
quartz vein. Old work.

Depth - 155 ft.

0' to 8' - Casing.

8' to 48' - Hard fine grained greenstone - several slips
but no significant mineralization. Rock dark
green - hard to drill.

48' - 73' - Hard fine grained greenstone - broken core
70' to 72' = no calcite or mineralization.

73' - 98' - Hard greenstone - no veins or significant
mineralization - broken core at 75' - 6".

98' - 123' - Hard greenstone - some fracturing with
red alteration (probably hematite) on
fracture faces.

At 101' - 12" vein material (101' to 102') quartz
and white calcite - barren looking.
Probably downward extension of vein
in surface trench.

120' to 121' lost core.

123' - 155' - Hard greenstone - some slips with no
mineralization - At 139' - 6" a $\frac{1}{8}$ " calcite
stringer with a little pyrite.

Hole No. 3.

Claim No. 29656.

Started on boundary line between claims 29655
and 29656

Drilled south - started at 40° dip but lost hole
at 38' bit stuck and could not
pull.

Started new hole at 50° dip at same
setup and strike.

Idea was to explore under the possible
westerly extension of a break showing
on edge of hill and on which is an old pit
500' to the east. For possible values
nearer Keewatin contact.

Depth 112'

0'-8'- Casing in overburden.

8'-48'- Hard fractured greenstone

45'-6" - 1" quartz containing calcite - some
hematite (mistaken at first for argentite)

48'-73'- Hard fractured greenstone - slips and fractures.

At 65' - 1" quartz.

At 71' - 4" quartz some chalcopyrite.

At 73' - Ground up quartz (about 1").

73'-98'- Continued in Greenstone - core fractured &
much broken up - no mineralization.

84' to 85' - lost core.

86' to 88' - lost core.

93' to 98' - core altered to whiter colour

98'-103'- Looks like fine grained diabase contact zone
with inclusions (small) of greenstone.

103'-112'- Whitish altered fine diabase.

109' to 112' - Looks like mud seam - 3' of mud
and drill could not continue owing to
caving. Width of mud seam not learned.

This may or may not be the break expected.
No mineralization or vein material noted in
mud.

End of hole 112'.



Log, for recording purposes by Mr. W. Brown - Depth - 321' Dip - ~~Start 33°~~ Average 30°

General Geology

- 0' - 2.5' - Casing
- 2.5' - 321' - Nipissing Diabase
- 2.5' - 6' - Fine gr. probably close to contact.
- 6' - 161' - Varied texture, very minor breakage at 32', 33' and 64'
- 161' - 191' - Varied texture, but brown pyroxene becomes plentiful. Beyond this brown pyrites occurs, but variably--e.g. at 237 and 317.
- 228' - Reddish oplitite - 2" to 4" wide.
- 304' to 307' - in coarse segregations, parallel orientation.
- 321' - end of hole.

Economic Geology

- At 111' - 1/2" white coarse calcite 48° to core.
- 109.5' to 113' - gray alteration in abundance--very minor disseminated chalc--less than 1%.
- At 113' - 1/2" pink calcite 20° to core, contains speck of chalc.
- At 125.5' - 1/2" pink calcite 20° to core, minor pyrite in wall; some minor hematite.
- At 134.5' - minor breakage; in part calcite 20° to core.
- 139.5' - Minor breakage.
- 153' - Minor breakage.
- 177' - 1/2" reddish oplitite 20° to core--1/20" carbonate on sides, epidote, minor pyrite, breakage in core.
- 184.5' - 1/2" fine carbonate, calcite 25° to core.
- 187' - Minor breakage.
- 190.5' - Minor breakage at 10° - 15° to core.
- 210' - 1/20" calcite, 20° to core
- 245' - Minor slips, calcite 25° to core, 1/10" calcite.
- 253' and 257' - very minor breakage, nearly parallel to core.
- 295' - 296' - breaking irregular, not strong.
- 314' - Minor breakage.

Log of Hole No. 5 (see plan) (to accompany log of Hole No. 4 above.)

- 0' - 20' - Casing
- 20' - 229' - Volcanics, felsite--gray, brownish, light green (variable colour) hard, contains quartz and feldspar crystals up to 1/20" (0-30%) in glossy matrix. Mineralization scanty--less than 5% chlorite, patches--irregular mottlings. (#1 Sample)
- 20' - 25' - Minor irregular fracturing through core.
- 48.5' - 49.5' - apparently minor breakage in core.
- 65.5' - 67.5' - Minor breakage.
- 67.5' - 67.7' - Minor breakage.
- 67.7' - 69' - Minor breakage.

- 46.5' - 1/2" pink carbonate, little quartz--38° to core, few specks pyrite and chalcopyrite.
- 41.5' - 1/40" with carbonate 20° to core.
- 51' - 52' - Minor breakage with carbonate films,
- 60.5' - 61.5' - fractures with carbonate films, in part parallel to core.
- 62.5' - 63.5' - Same
- At 70.1' - 1.5" quartz, right angle to core, trace of carbonate.
- At 86' - 1/2" quartz, some magnetite.
- 84.5' - Minor breakage
- 87' - 1/2" quartz.
- 88' - very minor fracture, carbonate film, minor pyrite.
- 93' - 94' - Minor fractures, carbonate film 20° to core.
- 96.5' - 1/2" quartz, minor carbonate, probably magnetite present.

Neogenic Geology

- 97' - film carbonate with chalcopyrite.
- 98' - minor fracture over 2", carbonate and chalcopyrite.
- 99' - 100' - minor fractures, film carbonate and chalcopyrite.
- 100.5' - irregular pink carbonate vein to 1/2" with chalcopyrite.
- 100' - 104' - minor irregular fractures and film of carbonate (minor)
- 105' - 106' - similar to above.
- 106.2' - minor quartz with hematite.
- 110.7' - 111.5' - films of pink carbonate.
- 115' - 119' - minor pink carbonate veinlets, irregular, to 1/8" - 2%
- 120' - 123.5' - some breakage with pink carbonate and minor quartz veinlets, minor pyrite.
- 124.5' - 1 1/2" quartz vein, minor carbonate.
- 125' - 126' - film carbonate along scattered breakage.
- 126.5' - 2 - 1/2" quartz veinlets with hematite, out by small pink carbonate veinlets with chalcopyrite.
- 129.5' - 130' - some breakage in core.
- 135.5' - 1/3" quartz veinlet with minor carbonate, traces of chalc.
- 139' - 1/8" pink carbonate with chalc - 25% to core
- 137.5' - 1/2" pink and white carbonate vein with chalc and minor hematite.
- 145.4' - irregular quartz with minor carbonate 1" pyrite and specularite unassociated.
- 151' - 1/3" quartz vein, minor pink carbonate, probably some hematite.
- 153' - over 6", minor fractures, carbonate films.
- 155.3' - 1/3" quartz, minor pink carbonate.
- 157' - 1/2" pink carbonate with chlorite.
- 157.5' - 1.5" quartz, minor pink carbonate with specularite.
- 161' - 162' - broken core.
- 163' - minor breakage.
- 163.4' - 1-1/3" pink carbonate with quartz next to 1" quartz vein, minor specularite.
- 166' - 167' - some breakage with minor carbonate film
- 167' - 167.5' - core broken.
- 171' - 173' - core broken, some minor red hematite in part.
- 172' - 172.5' - breakage marked.
- 177' - 177.5' - core broken - 1/8" pink carbonate veinlet.
- 178.5' - 179' - minor breakage, 2 - 1/20" pink carbonate veinlets.
- 188' - 188.5' - breakage.
- 189' - 189.5' - irregular pink carbonate (12%) minor quartz and some epidote.
- 189.5' - 191' - abundant epidote.
- 192' - 193' - minor epidote with carbonate veinlets.
- 193' - 194' - some core breakage.
- 210' - 212.5' - minor breakage.
- 218' - 219.5' - minor breakage, with carbonate films
- 220' - 222' - minor breakage.
- 229' - end of hole.

207
5211
1550

COPY to Dr. F.

November 18, 1955.



Brown - Howes Claims - Lorrain Township

Hole No. 6

Claim No. 29655

Log, for recording purposes by Mr. W. Brown
Depth 409', dip 45° at start.

Location of collar - 180' North of and 165' east of Hole No. 3 - drilled parallel to No. 3. See plan of old hole locations already recorded.

- 0' - 3' Overburden.
- 3' - 25' Conglomerate (some coarse granite pebbles)
- 25' - 31' Same.
- 31' - 105' Greywacke.
- 105' - 161' Conglomerate (broken badly in places in this area no pronounced mineralization noted.)
- 161' - 200' Diabase - (contact at 161 ft.) beginning fine grained and gradually grading into coarser grey diabase.
- 200' - 409' Coarse grey diabase.

At 223' - $\frac{1}{8}$ " pink quartz veinlet 20° to hole

225' - 250' - Diabase very coarse generally.

At 320' - $\frac{1}{4}$ " quartz - calcite stringer.

At 347' - broken core may be a fault.

From 360' to 375' the coarse diabase is more broken up than previously. Ground core at 365', 370' and 373'. This area indicates a fracture zone. Some pyrite or marcasite is noted on fractures and near them.

G. A. Howes
Mining Engineer

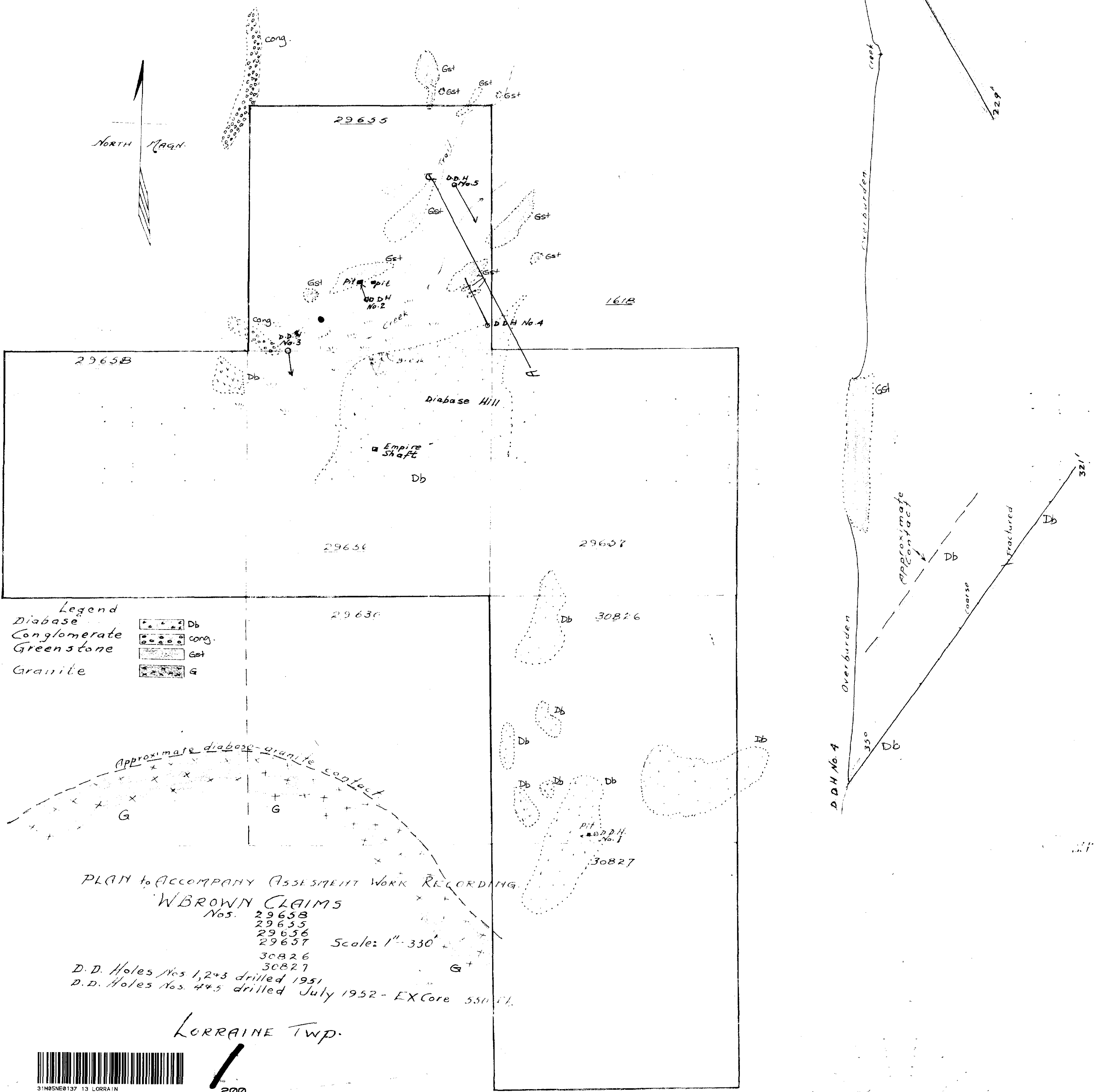
Some epidote along slips.

Any calcite may have been ground up and washed out.

At 384' core broken and at 390.5' is 1" cored mud and broken core again at 396' and 397'.

End of hole 409'.

RECEIVED
 SEP 29 1952
 TEMISKAMING
 MINING DIVISION

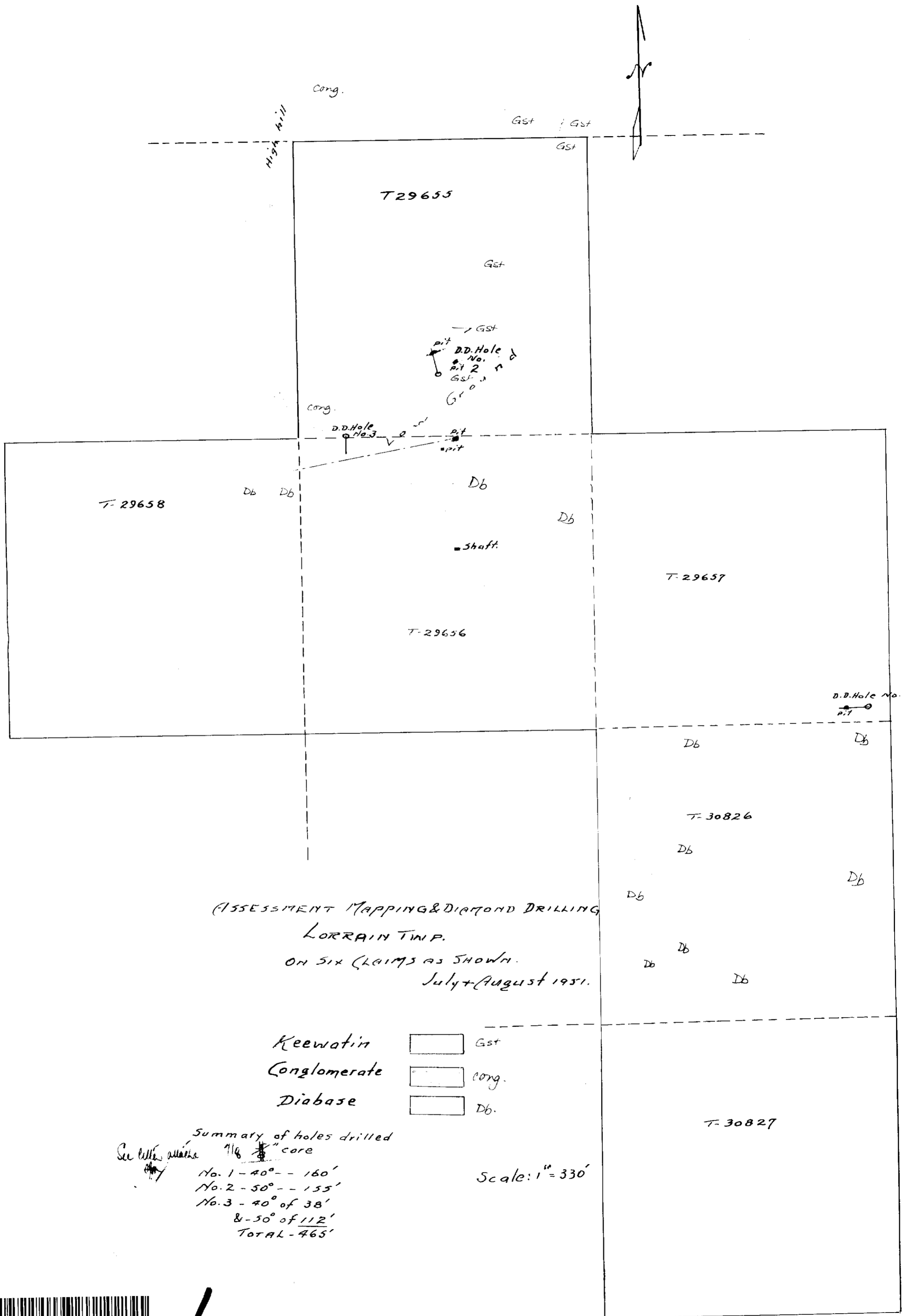


Holes Nos. 4+5 on section A-A.
 Scale: 1" = 50'
 Elevations approximate

PLAN to ACCOMPANY ASSESSMENT WORK RECORDING
 W BROWN CLAIMS
 Nos. 29658
 29655
 29656
 29657
 30826
 30827
 Scale: 1" = 330'
 D.D. Holes Nos. 1, 2+3 drilled 1951
 D.D. Holes Nos. 4+5 drilled July 1952 - EX Core 550 ft.

LORRAINE TWP.





(ASSESSMENT MAPPING & DIAMOND DRILLING)
 LORRAIN TWP.
 ON SIX CLAIMS AS SHOWN.
 July + August 1951.

Keewatin Gst
 Conglomerate Cong.
 Diabase Db.

Summary of holes drilled
 See letter attached 1 1/2" core
 No. 1 - 40° - 160'
 No. 2 - 50° - 155'
 No. 3 - 40° of 38'
 & - 50° of 112'
 TOTAL - 465'

Scale: 1" = 330'

