



31M05NE0157 25 COLEMAN

010

Diamond Drilling

Township of Coleman

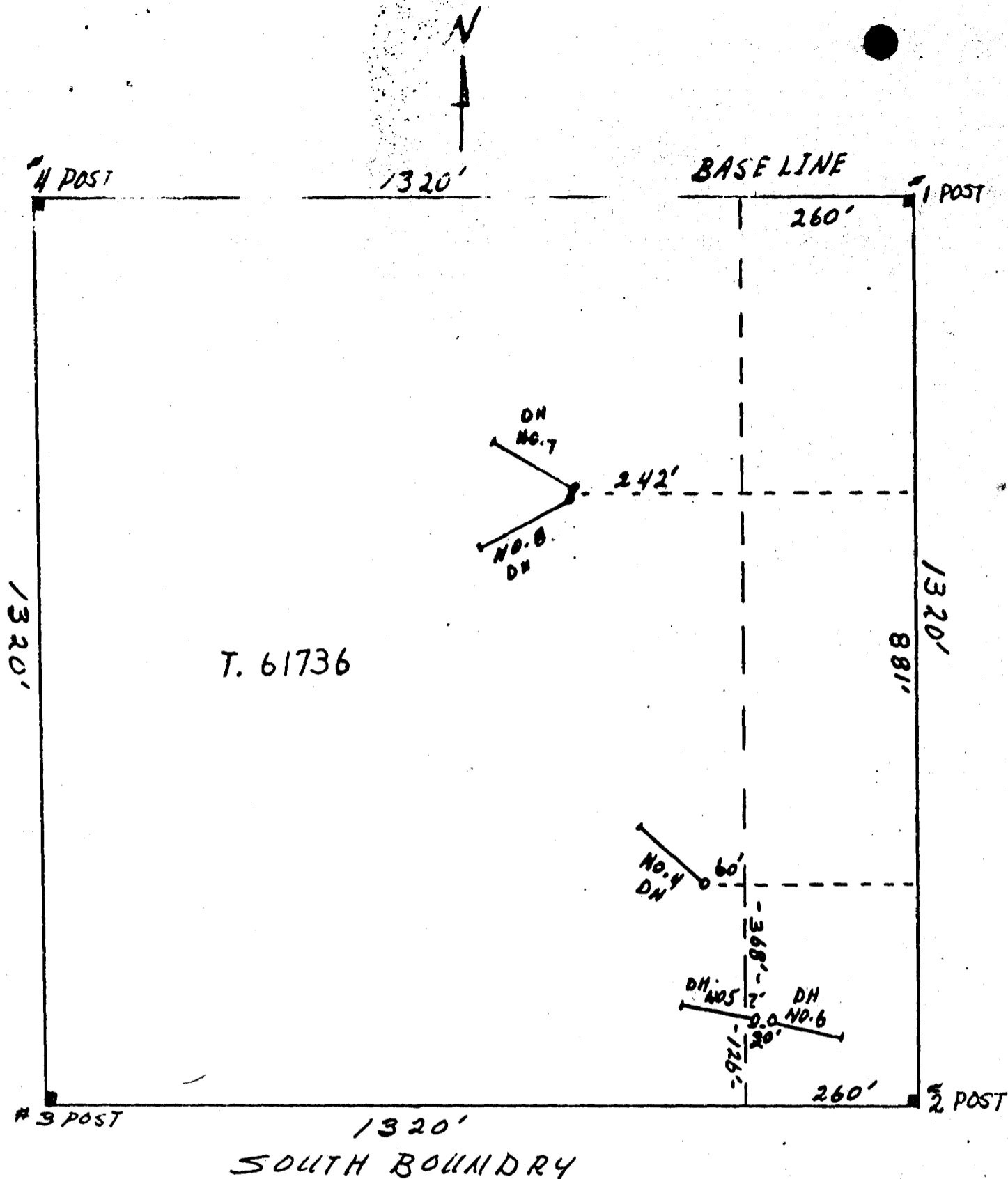
Report NO: 25

Work performed by: McConnell Craig

Claim NO	Hole NO	Footage	Date	Note
T 61736	CR-69-4	125'	July/69	
	CR-69-5	115'	July/69	
	CR-69-6	129'	July/69	
	CR-69-7	152'	July/69	
	CR-69-8	138'	July/69	

5DDH 659'

Notes:



The McConnell Craig Property.
 Coleman Twp., Lot 8, Con. V, Temiskaming District, Larder Lake M. D.

DIAMOND DRILLING	location	bearing	dip	feet	dates
DH. #CR-69-4,	386' N, 320' W, of #2 Post,	N.45° W.,	30°	125'	3/7-10/7/69
#CR-69-5,	126' N, 247' W, of #2 Post,	N.60° W.,	30°	115'	10/7-15/7/69
#CR-69-6,	126' N, 253' W, of #2 Post,	S.60° E.,	30°	129'	15/7-22/7/69
#CR-69-7,	884' N, 502' W, of #2 Post,	N.80° W.,	40°	152'	22/7-30/7/69
#CR-69-8,	881' N, 507' W, of #2 Post,	S.30° W.,	35°	138'	30/7-8/8/69

Core size = 7/8", J.H.Price, Box 274, Cobalt, Ont. Driller

Notes. Feet = core length

dates = from starting day to completion day

The above work began July 3, 1969 and was finished August 8, 1969

DRILL CORE AT DRILL SITE



THE MINING ACT - DEPARTMENT OF MINES
DIAMOND DRILLING LOG

Start a new page for every new hole, but fill in top portion of form only on first page for each hole.

EVERY PAGE CR 69-4 PAGE 1

DRILLING COMPANY J.H. Price, Drilling		COLLAR ELEVATION	BEARING OF HOLE FROM TRUE NORTH N45°W	TOTAL FOOTAGE 125'	DIP OF HOLE AT collar 30°	LOCATION OF HOLE IN RELATION TO A FIXED POINT ON THE CLAIM 386' NORTH 320' WEST OF # 2 Post CLAIM - T-61736	MAP REFERENCE NO	CLAIM NO T-61736
DATE HOLE STARTED JULY 3-1969	DATE COMPLETED JULY 10th 1969	DATE LOGGED JULY 22nd	LOGGED BY J.H. Price		ft -	TOWNSHIP OF COLEMAN LOT-9 CON V	PROPERTY NAME Mac Craig Property	
EXPLORATION CO., OWNER OR OPTIONEE McCONNELL, Craig		DATE SUBMITTED	SUBMITTED BY (Signature)		ft -			
					ft -			

FOOTAGE		ROCK TYPE	DESCRIPTION Colour, grain size, texture, minerals, alteration, etc.	PLANAR FEATURE ANGLE	CORE SPECIMEN FOOTAGE +	YOUR SAMPLE NUMBER	SAMPLE FOOTAGE		SAMPLE LENGTH	ASSAYS +
FROM	TO						FROM	TO		
0	37'6"	Conglomerate	Rebbed. (3" Lost Core between 13'2" - 13'5")							
37'6"	80'3"	Lamprophyre-dike	(3" Lost Core between 76'10" - 77'1") 4" L.C. between 77'3" - 77'7") (3" " " " 78'2" - 78'5") 1/4" Calcite with some Kyrite at 9'							
80'3"	125'	Keewatin	(Calcite Skips at 89' - 98'6" - 114'9") (6" Lost Core between 119' - 119'6") (4" " " " 120'2" - 120'6")							
			End of Hole - 125'							

RECEIVED
DEC 2 1969
AM 7:59 PM 12:12:56



THE MINING ACT - DEPARTMENT OF MINES
DIAMOND DRILLING LOG

Start a new page for every new hole, but fill in top portion of form only on first page for each hole.

FILL IN ON EVERY PAGE

HOLE NO. CR-69-5 PAGE NO. 1

DRILLING COMPANY J. H. Price - Drilling		COLLAR ELEVATION	BEARING OF HOLE FROM TRUE NORTH N 60° W	TOTAL FOOTAGE 115'	DIP OF HOLE AT collar 30°	LOCATION OF HOLE IN RELATION TO A FIXED POINT ON THE CLAIM 126' North 247' West of # 2. Post CLAIM - T-61736	MAP REFERENCE NO.	CLAIM NO. T-61736
DATE HOLE STARTED JULY 10-69	DATE COMPLETED JULY 15-69	DATE LOGGED JULY 22	LOGGED BY J. H. Price				LOCATION (Tp., Lot, Con. OR Lat. and Long.) Township of Coleman Lot 8 Con V	PROPERTY NAME Mac Craig Property
EXPLORATION CO., OWNER OR OPTIONEE McCormick CRAIG. II		DATE SUBMITTED	SUBMITTED BY (Signature)					

FOOTAGE FROM	TO	ROCK TYPE	DESCRIPTION Colour, grain size, texture, minerals, alteration, etc.	PLANAR FEATURE ANGLE	CORE SPECIMEN FOOTAGE †	YOUR SAMPLE NUMBER	SAMPLE FOOTAGE		SAMPLE LENGTH	ASSAYS †
							FROM	TO		
0	34	Conglomerate	Pebbled (Medium GRAINED)							
34	50'6"	Conglomerate (Coleman Type) (No bedding FINE GRAINED) GRIT								
50'6"	100'8"	Conglomerate	(SLIPs with Pyrite AT 72'6" & 85'8")							
100'8"	115'		Keewatin. (broken up & Brecciated with some Pyrite) (Possible FAULT zone)							
			1" Calcite with blub of Calc. AT- 101' 2"							
			1/2" " AT 112' 6"							
			4" Lost Core between 101' 8" - 102'							
		2 "	" " 102' 8" - 102' 10"							
		2 "	" " 104' 2" - 104' 4"							
		3 "	" " 112' - 112' 3"							
		3 "	" " 114' 4" - 114' 7"							
end of Hole <u>115'</u>										

DEC 2 1969
715010115 1123/56

† Additional credit available. See Assessment Work Regulation.



THE MINING ACT - DEPARTMENT OF MINES
DIAMOND DRILLING LOG

Start a new page for every new hole, but fill in top portion of form only on first page for each hole.

FILL IN ON EVERY PAGE

HOLE NO. CR-69-7 PAGE NO. 1

DRILLING COMPANY J. H. Price Drilling		COLLAR ELEVATION	BEARING OF HOLE FROM TRUE NORTH 280°	TOTAL FOOTAGE 152'	DIP OF HOLE AT collar 40°	LOCATION OF HOLE IN RELATION TO A FIXED POINT ON THE CLAIM 884' North 502' West of # 2 Post T-61736	MAP REFERENCE NO.	CLAIM NO. T-61736
DATE HOLE STARTED July 22-69	DATE COMPLETED July 30-69	DATE LOGGED Aug-9-69	LOGGED BY J. H. Price		ft		LOCATION (Tp., Lot, Con. OR Lat. and Long.) TWP OF COLEMAN Lot 8 Con V	PROPERTY NAME Mac Craig Property
EXPLORATION CO., OWNER OR OPTIONEE McConnell CRAIG II		DATE SUBMITTED	SUBMITTED BY (Signature)		ft			
					ft			

FOOTAGE		ROCK TYPE	DESCRIPTION Colour, grain size, texture, minerals, alteration, etc.	PLANAR FEATURE ANGLE	CORE SPECIMEN FOOTAGE +	YOUR SAMPLE NUMBER	SAMPLE FOOTAGE		SAMPLE LENGTH	ASSAYS +
FROM	TO						FROM	TO		
0'	59'	Keewatin	PALE GREEN Keewatin LAYALS WITH NUMEROUS NARROW CALCITE STRINGERS. 1/2" TO 3/4" CALCITE VEINS AT 27'6" - 32'4" 43'6" 44'6"							
59'	74'6"	"	PALE GREEN LAYALS INTERMIXED WITH BANDS OF BLACK CARBONACEOUS MATERIAL + PYRITE (MASSIVE PYRITE IN PLACES)							
74'6"	99'	Keewatin-Sediments	With some MASSIVE PYRITE in black CARBONACEOUS Sediments. 4" Lost Core between 76'8" - 77' (1/2" TO 3/4" VEINS AT 75'4" - 78'6" - 78'8" - 90'2" - 90'4" 94' 1" O/B VEIN AT 92'8"							
99'	106'2"	Keewatin	PALE GREEN Keewatin LAYALS WITH NUMEROUS CALCITE SLIPS 4" Lost Core between 103'2" - 103'4" 1/2" Calcite AT 104'4"							
106'2"	109'	" Sediments	Band of CARBONACEOUS MATERIAL PYRITE IN PLACES							
109'	152'	Keewatin	PALE GREEN Keewatin LAYALS cut with NUMEROUS NARROW bands of black CARBONACEOUS MATERIAL + Calcite MASSIVE PYRITE ASSOCIATED WITH these bands 2" inches of white Calcite + Pyrite in band black CARBONACEOUS MATERIAL between 125'4" - 125'6" End of hole 152'							

DEC 2 1969
7:00 PM '69



THE MINING ACT - DEPARTMENT OF MINES
DIAMOND DRILLING LOG

Start a new page for every new hole, but fill in top portion of form only on first page for each hole.

FILL IN ON EVERY PAGE HOLE NO. CR-69-8 PAGE NO. 1

DRILLING COMPANY J.H. Price, Drillings		COLLAR ELEVATION	BEARING OF HOLE FROM TRUE NORTH 150°	TOTAL FOOTAGE 138	DIP OF HOLE AT COLLAR 35°	LOCATION OF HOLE IN RELATION TO A FIXED POINT ON THE CLAIM 881' North 507' West OF # 2 Post CL-T-61736	MAP REFERENCE NO.	CLAIM NO. T. 61736
DATE HOLE STARTED July 8-69	DATE COMPLETED Aug 8-69	DATE LOGGED Aug-9-69	LOGGED BY J.H. PRICE		ft	LOCATION (Tp., Lot, Con. OR Lat. and Long.) TWP. OF COLEMAN Lot 8. CON V	PROPERTY NAME MAC CRAIG PROPERTY	
EXPLORATION CO., OWNER OR OPTIONEE McConnell CRAIG II		DATE SUBMITTED	SUBMITTED BY (Signature)		ft			
					ft			
					ft			

FOOTAGE		ROCK TYPE	DESCRIPTION Colour, grain size, texture, minerals, alteration, etc.	PLANAR FEATURE ANGLE	CORE SPECIMEN FOOTAGE +	YOUR SAMPLE NUMBER	SAMPLE FOOTAGE		SAMPLE LENGTH	ASSAYS +
FROM	TO						FROM	TO		
0'	52'6"	Keewatin	Pale green Keewatin LAVALS with numerous Calcite stringers 1 1/2" Calcite vein between 20' - 20' 1 1/2" 1" vein of Calcite in band of black Carbonaceous material between 27' 10" - 27' 11" 3" Lost Core between 51' - 51' 3"							
52'6"	73'8"	Keewatin Sediments -	9' 6" Band of black Carbonaceous material with massive Pyrite in places between 59' 6" - 69' 6" of 75% massive Pyrite 69' - 69' 5" 4" Lost Core between 50' 10" - 51' 2" 3" " " " 61' 3" - 61' 8" 2" " " " 61' 9" - 61' 11" 2" " " " 62' 4" - 62' 6"							
73'8"	100'	Keewatin	Pale green Keewatin LAVALS with numerous narrow bands of black Carbonaceous material 3" Lost Core between 76' - 76' 3"							
100'	138'	"	Pale green Keewatin (harder drilling) 6" OT3 Calcite-OT3 - Rock Mixture between 102' 4" - 102' 10" 2 Feet " " " 103 - 105' 1" OT3 " " 105' 10" 10" Cal. - Rock Mixture 108' - 108' 10" 16" Massive Chalky white OT3 between 109' 4" - 110' 8" 8" Cal. OT3 & Rock Mixture " 111' 8" - 112' 4" 2" OT3 & Cal. " 114' 10" - 115'							
End of Hole 138'										

DEC 2 1969
700010111219