



31M05NE0160 21 COLEMAN

010

Diamond Drilling

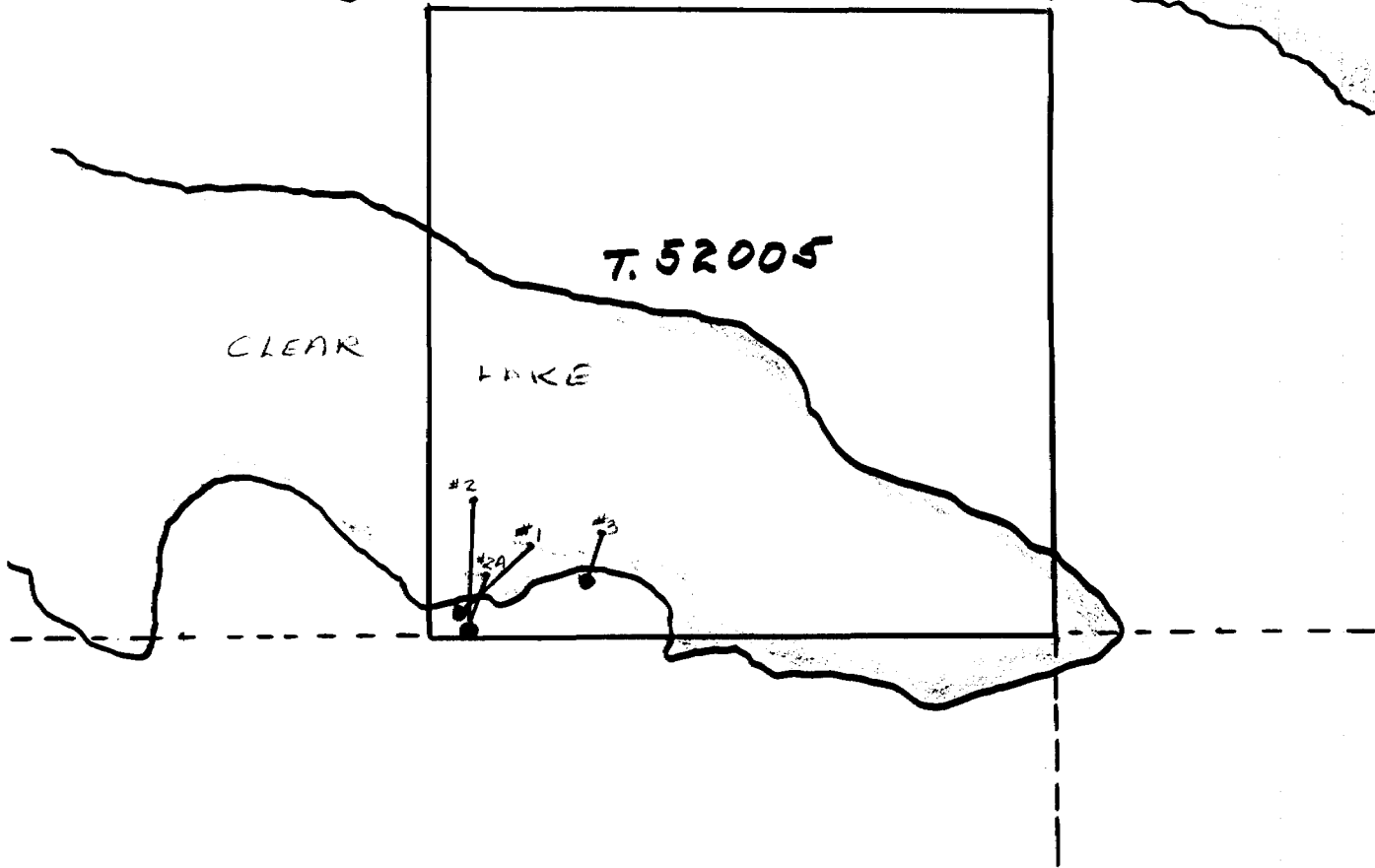
Township of Coleman

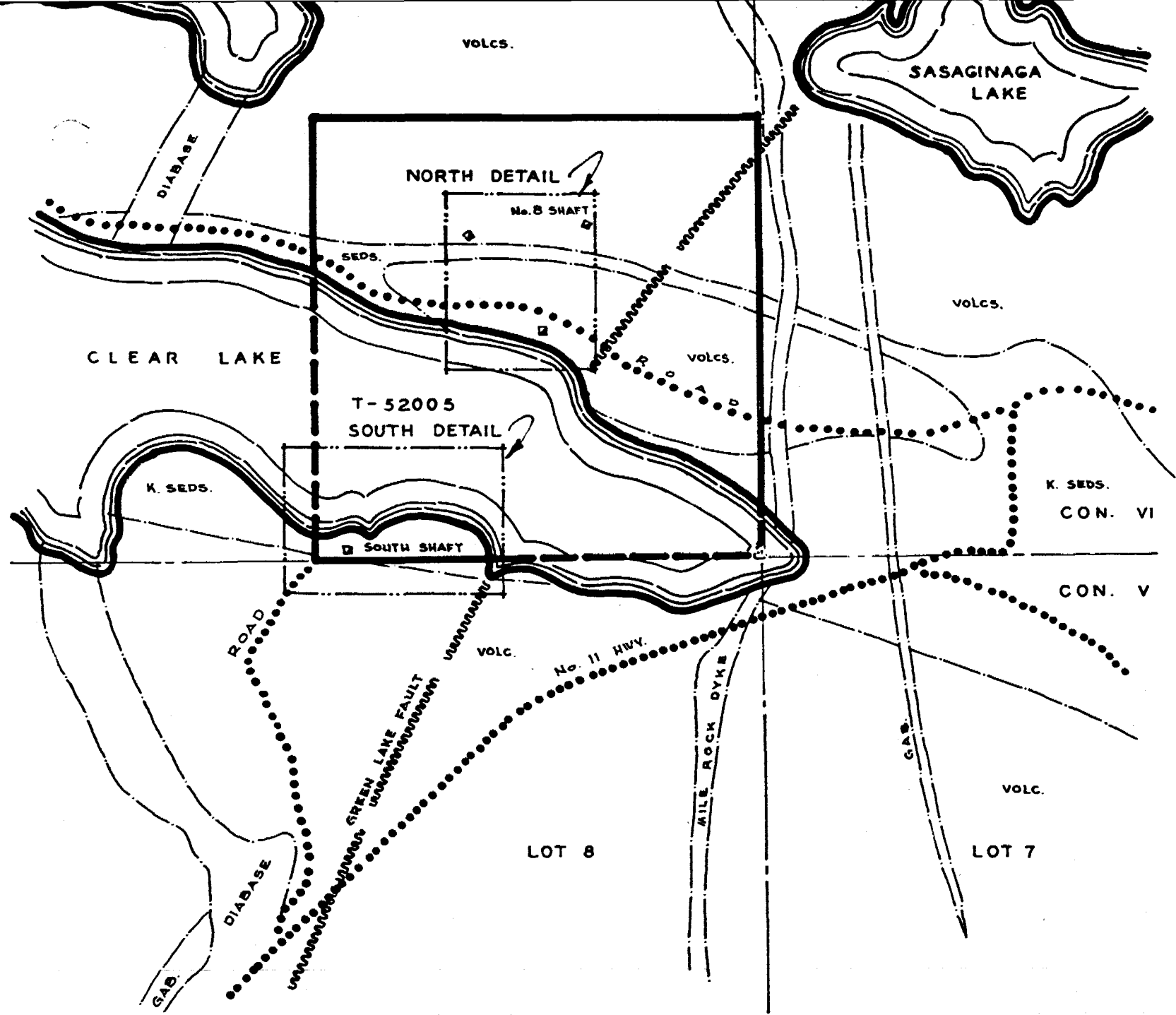
Report NO: 21

Work performed by: Equity Explorations Ltd.

Claim NO	Hole NO	Footage	Date	Note
T 52005	1	140'	Sept/62	
	2	32'	Sept/62	
	2A	127'	Sept/62	
	3	130'	Sept/62	
	1	112'	July/63	
	2	125'	July/63	

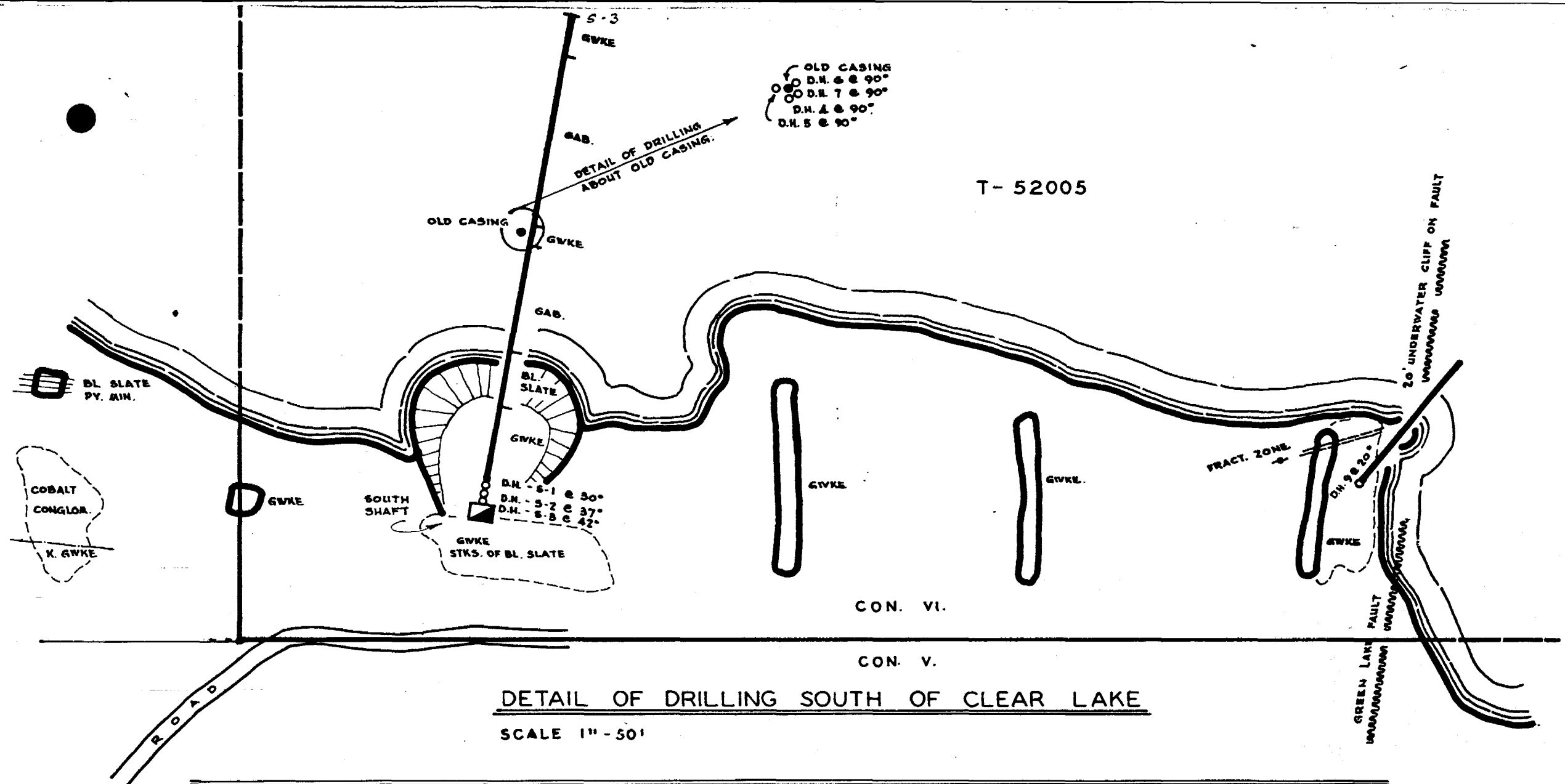
Notes:





PLAN OF PROPERTY

SCALE 1" = 400'



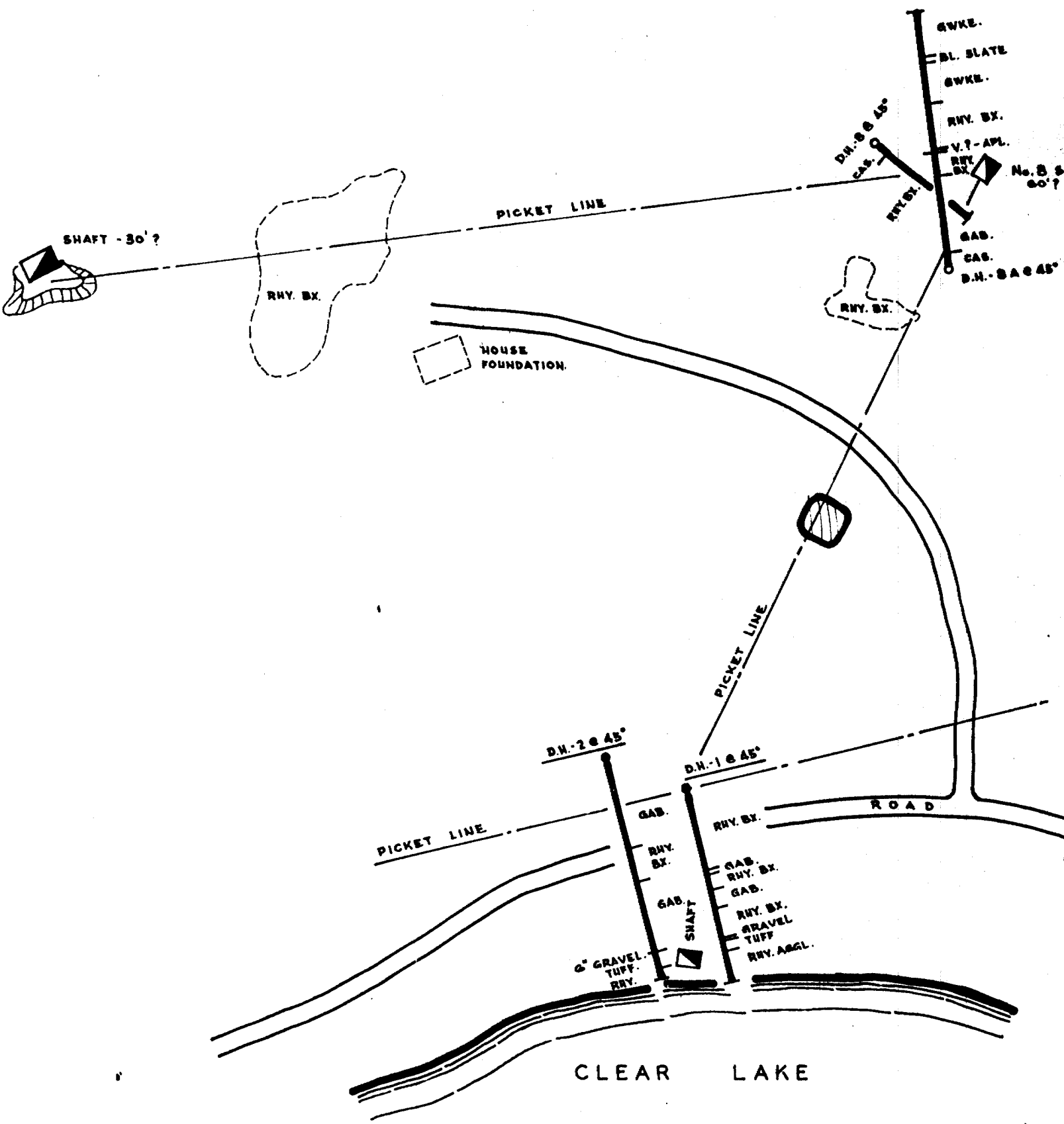
T- 52005

DETAIL OF DRILLING SOUTH OF CLEAR LAKE
 SCALE 1" = 50'

EQUITY EXPLORATIONS LTD.
CLEAR LAKE PROPERTY - COLEMAN TWP.
PLANS & DETAIL OF DIAMOND DRILLING
 SCALE AS SHOWN

PREPARED FOR G.L. HOLBROOKE

DATE Dec 26/63 SIGNED G.L. Holbrooke



DETAIL OF DRILLING NORTH OF CLEAR LAKE

SCALE 1" = 50'

DT #100

PROPERTY: Clear Lake Property		HOLE NO.: 1
UNIVERSITY EXPLORATIONS LIMITED	STARTED: July 9/63	COMPLETED: July 10/63
LATITUDE:	BEARING: S14°E	DIP: 45°
DEPARTURE:	V.D.	H.D.
ELEVATION:	LOCATION: 567' south & 630' west of NE corner claim 52005	DRILLED BY: Groleau Drilling Co. Ltd.
		DEPTH: 112.0
		LOGGED BY: G.L.H.

FOOTAGE	DESCRIPTION	SAMPLE FOOTAGES	SAMPLE No.	WIDTH Ft.	ASSAY		DATA	
					Ag/Cg	Au/Og		
00	Collar							
7.0	Casing							
14.0	Rhyolite - dark grey - fine grained - siliceous - occasional pyrite							
24.5	Breccia - rhyolite as above - yellowish fragments - occasional 1/8" quartz - calcite streaks							
47.7	Rhyolite - as for 14.0 - occasional 1/8" to 1/4" quartz carbonate streaks @ 60°							
49.7	Diabase - dark grey - medium fine grained - contact @ 40°							
50.7	Breccia - rhyolite as for 24.5							
59.0	Rhyolite - as for 14.0 - occasional quartz carbonate stringers @ 80°							
68.4	Diabase - medium fine to coarse grained - dark grey - contact 45°							
70.0	Rhyolite - as for 14.0							
70.4	Breccia - rhyolite as for 24.5							
85.7	Agglomerate - rhyolite - numerous indefinite rhyolite fragments - quartz carbonate veinlets to 1" wide @ 75°							
87.7	Opening - gravel filled - may be old stope of weathered out vein - walls not fractured							
97.6	Luff - andesitic - dark green - medium fine grained - fragments to 1/4"							

G. L. H.

EQUITY EXPLORATIONS LIMITED		PROPERTY: Clear Lake Property		HOLE NO. 1	
LATITUDE:		BEARING: S14°E	DIP: 45°	STARTED: July 9/63	COMPLETED: July 10/63
DEPARTURE:		V.D.	H.D.	DRILLED BY: Groleau Drilling Co. Ltd.	
ELEVATION:		LOCATION: 567' south & 630' west of NE corner claim 52005			DEPTH: 112.0
					LOGGED BY: G.L.H.

FOOTAGE	DESCRIPTION	SAMPLE FOOTAGES	SAMPLE No.	WIDTH Ft.	ASSAY		DATA	
					Ag/Oz	Au/Oz		
99.1	Rhyolite - silicified - light green - irregular quartz veinlets - contact @ 70° - medium wispy fine pyrite	97.9- 99.1	10	1.5	0.06	Nil		
101.9	Rhyolite - silicified - same	99.1-101.9	11	2.8	Nil	Nil		
104.4	Rhyolite - silicified - same	101.9-104.4	12	2.5	Nil	Nil		
112.0	Rhyolite - as for 14.0 - occasional quartz threads @ 60° - rare wisps of pyrite							
	E N D O F H O L E							

G.L.H.

PROPERTY: Equity Explorations Limited - Clear Lake Property				HOLE NO. 2	
LATITUDE:	BEARING: 814°E	DIP: 45°	STARTED: July 12/63	COMPLETED: July 13/63	
DEPARTURE:	V.D.	H.D.	DRILLED BY: Groleau Drilling Co. Ltd.		DEPTH: page 1
ELEVATION:	LOCATION: 554' south & 660' west of NE corner claim 52005			LOGGED BY: J.L.M.	

FOOTAGE	DESCRIPTION	SAMPLE FOOTAGES	SAMPLE No.	WIDTH Ft.	ASSAY DATA				
					Ag/Oz	As/Oz			
00	Collar								
7.0	Casing								
52.0	Gabbro or diabase - dark grey - medium fine grained - occasional quartz - carbonate stringers								
73.0	Rhyolite - medium grey - fine grained - occasional quartz phenocrysts								
74.8	Gabbro - as above - contacts @ 60°								
75.0	Rhyolite - as above								
93.4	Gabbro - as above - contact @ 75°								
93.7	Vein - 3" pink calcite + calcite breccia in gabbro - no mineral	93.4-94.7	13	1.3	Nil	Nil			
98.4	Gabbro - as above								
98.5	Vein - 1/4" pink calcite @ 50°	98.4-98.5	14	0.1	0.08				
100.2	Gabbro - as above								
100.5	Vein - pink calcite breccia	100.2-100.4	15	0.2	Nil				
111.3	Gabbro - as above								
112.2	Vein - 1/16" pink calcite parallel to core	111.3-112.2	16	0.9	Nil				
112.7	Opening filled with gravel - may be corner of drift								
122.5	Tuff - andesitic - dark green - medium grained - fragments to 1/4"								
122.7	Vein - 1/4" pink calcite on contact @ 40°	122.5-122.7	17	0.2	Nil				
125.0	Rhyolite - as above partly brecciated								
E N D O F H O L E									

Handwritten signature: G.L. Holbrook