

DIAMOND DRILLING



31M05NW0032 38 COLEMAN

010

TOWNSHIP: COLEMAN

REPORT No.: 38

WORK PERFORMED BY: JAMES E. ARMSTRONG

<u>CLAIM No.</u>	<u>HOLE No.</u>	<u>FOOTAGE</u>	<u>DATE</u>	<u>NOTE</u>
S 473624	A 80-1	1254.0	June/80	(1)
371	A 80-2	134.0	July/80	(1)
	A 80-3	59.0	July/80	(1)
S 473623	A 80-4	128.0	July/80	(2)
	A 80-5	122.0	July/80	(2)

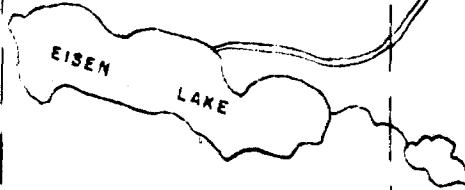
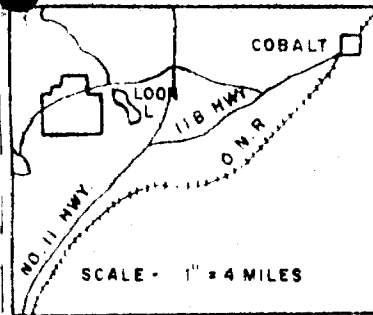
NOTES: (1) # 36-80  
(2) # 35-80

LOT 17

LOT 16

LOT 15

LOT 14



Ndb. Hwy.

COBALT 4 MILES

NO. 11

473623  
short  
CO. H

1436 P	1437 P	371 P	473622 CO.
-----------	-----------	----------	---------------

CON. VI

CON. V

473629

473624

2000  
P

1169  
P

1150  
P

dit  
D  
PYP  
A.

1659  
P

473628

473625  
short  
CO.

473631

1136  
P

473627

473626

473630

← PORTAGE BAY  
APPROX  
1000 W

PROPERTY MAP

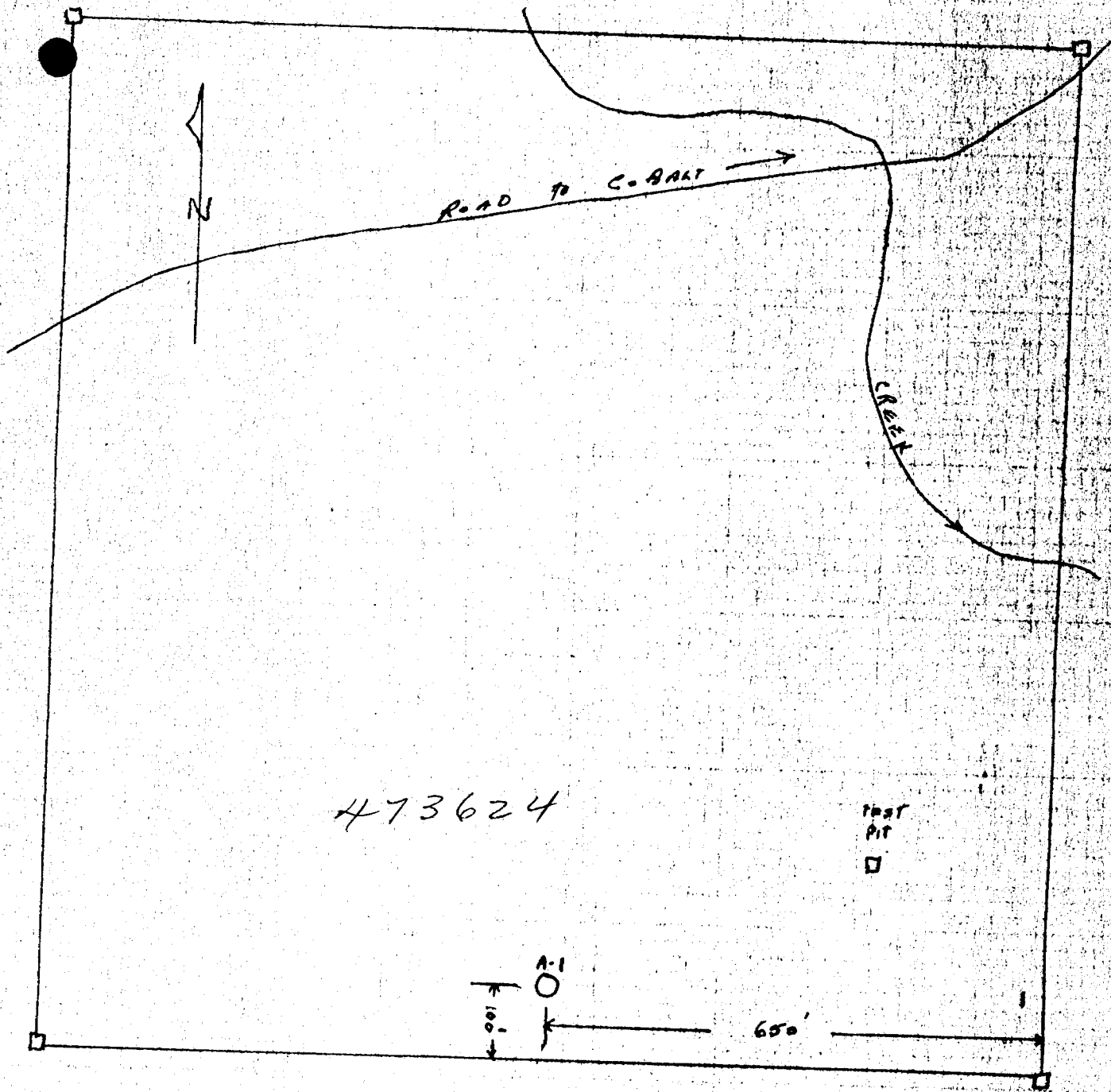
ARMEX LIMITED

PORTAGE BAY AREA

COLEMAN TWP.

DATE

SCALE: 1 INCH = 20 CHAINS



SKETCH SHOWING LOCATION OF DIAMOND DRILL HOLE NO. A-1  
ON CLAIM NO. 473624 IN COLEMAN TWP.

SUD BURY MINING DIVISION

SCALE: 1" = 200'

Company Ranworth Explorations Ltd.

# Drill Hole Log

**Dip Tests**

At 600' Ft. 60°  
 At ..... Ft. ....  
 At ..... Ft. ....  
 At ..... Ft. ....  
 At ..... Ft. ....  
 At ..... Ft. ....

Property Armex  
 At Coleman Twp  
 Claim No. 473624  
 Working Place .....  
 Baseline Footage .....  
 Baseline Offset .....  
 Date Started June 18, 1980  
 Date Completed July 2, 1980

Hole Number A80-1  
 Dip 60°  
 Length 1254  
 Bearing East  
 Elev. Collar .....  
 Horiz. Trace .....  
 Vert. Trace .....  
 Date Logged .....

FROM	TO	DESCRIPTION	1	2	SAMPLE NUMBER
0	22.0	Casing			
22.0	984.5	Nipissing Diabase, Scattered pyrite thruout			
		At 62.5, 1/16" calcite			
		82 - 102, Fract'd broken, red oxide on slips			
		At 91.0, 6" breccia, calcite, cpy			
		At 103.0 12" sand, probably open fault			
		At 105.8, 3/8" calcite & pyrite min.			
		At 145.5, 1/4" calcite			
		At 146.0, 1" gouge			
		207.5 - 208.5, fine-grained, hairline calc. str.			
		At 208, 1" of calcite			
		218 - 219, Fract'd, brecciated, calc. pyr. min.			
		218.2 - 218.8 (Sample)		0.1	A1-1
		At 275, fracturing acute to core, calc. on slips			
		At 283, Fract'd, chlorite min.			
		320.1-325, Fract'd, chloritic			
		At 320.8, 1/2" calc. and chlorite			
		At 324.5, 2" black, fine-grained dike, pyr. min.			
		353 - 354, Fract'd, slicks			
		At 415.3, 1/4" qtz, pyr.			
		458 - 462.5, Siliceous, pink and green coloration, some fracturing with calc. on slips			
		At 483.5, Fract'd ll to core, calc. & chl. on slips			
		555 - 557.2, fine-grained dike rock			
		At 653.0, 1/16" calc.			
		END OF HOLE con'd			

Logged by Robert L. House



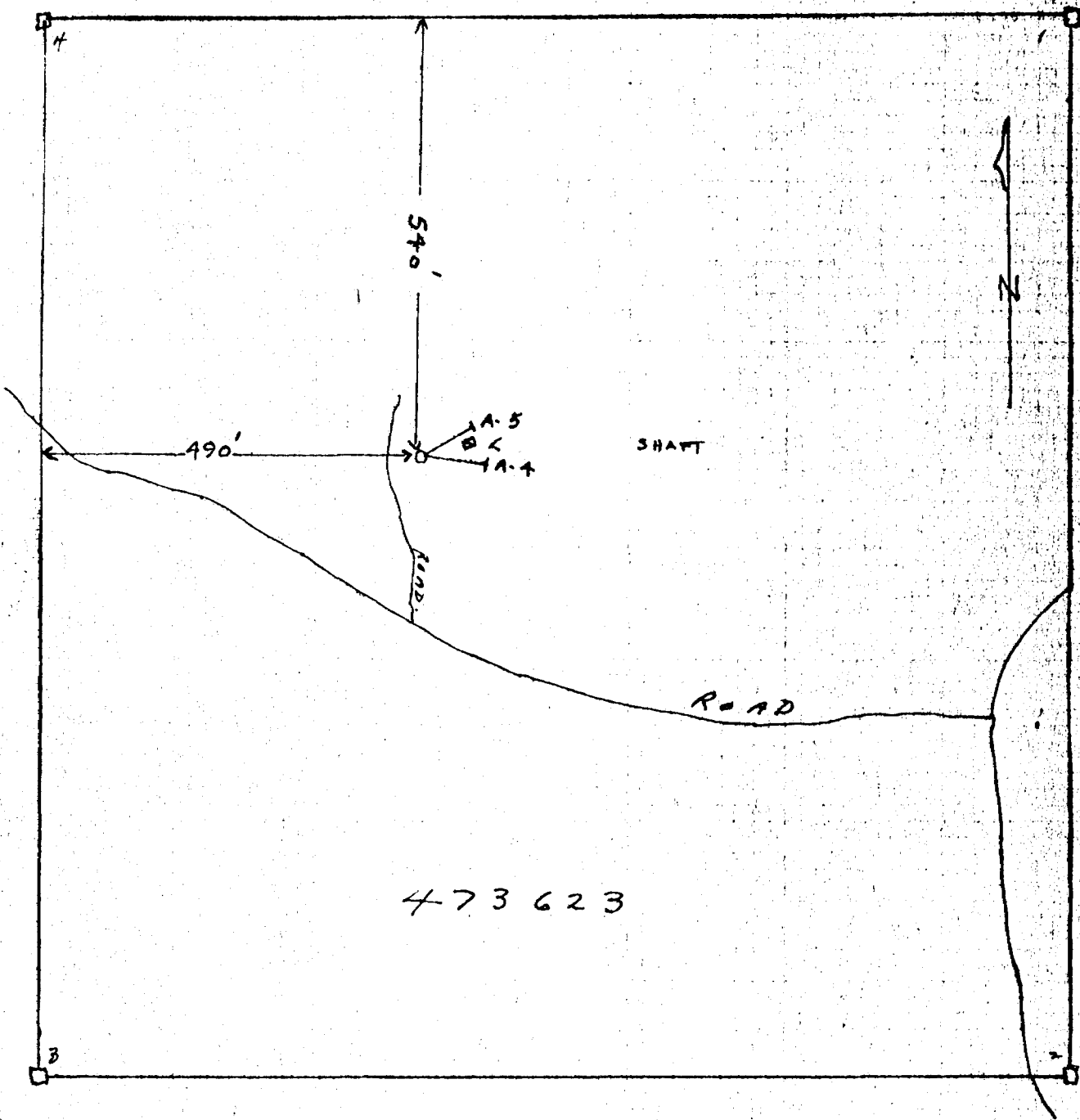












SKETCH SHOWING LOCATION OF DIAMOND DRILL  
 HOLES NOS. A-4 - A-5 ON CLAIM # 473623.  
 IN COLEMAN TWP. SUDBURY MINING DIVISION  
 SCALE: 1" = 200'