



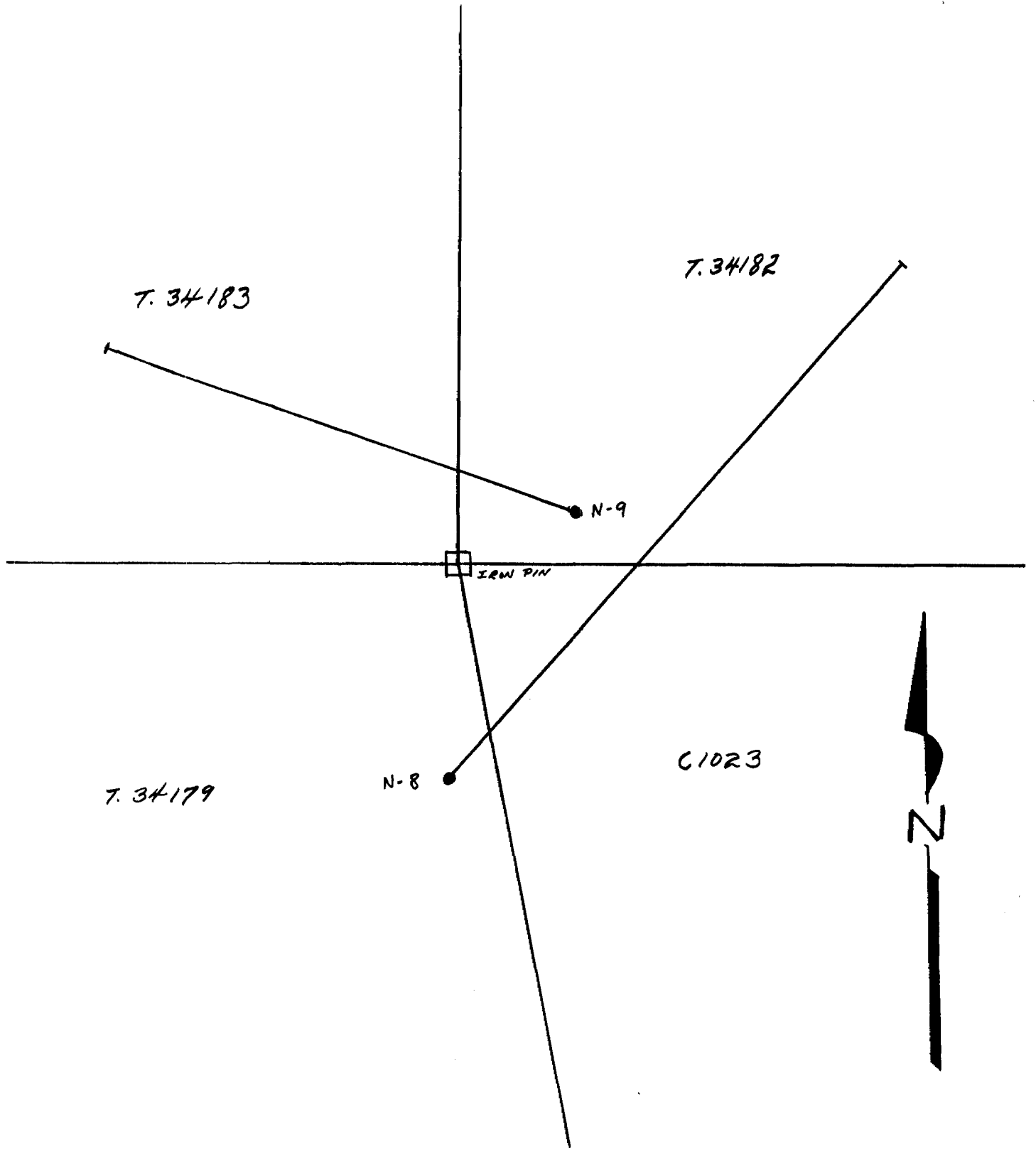
31M05SE0061 17 GILLIES LIMIT

010

GILLIES LIMIT (N. PT.) TOWNSHIP REPORT #17

This file contains work performed by Quebec Metalurgical on claims:

T. 34179	Hole #N-8;	Nov., 1953
T. 34182	Hole #N-9;	Aug., 1955



QUEBEC METALURGICAL INDUSTRIES LTD  
AUG. 1955

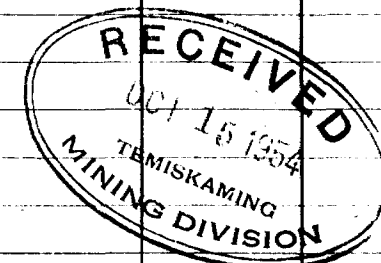
1"=100'

# DIAMOND DRILL RECORD

PROPERTY Wm. J. Newton - Claim T34179 Gillies Limit HOLE NO. WN 8

SHEET NUMBER 1 SECTION FROM 0 TO 503 STARTED 0-153', 13-14 Nov/53  
 LATITUDE See Map DATUM See Map COMPLETED 153-503', 18-23 May/54  
 DEPARTURE " " BEARING " " ULTIMATE DEPTH 503  
 ELEVATION " " DIP 45 degrees PROPOSED DEPTH 500

DEPTH FEET	FORMATION	SAMPLE NO.	WIDTH OF SAMPLE	GOLD \$	SLUDGE GOLD \$
0 - 3.9	Casing				
- 25.7	Tuff - andesitic, bedding 45° to core axis				
- 52.5	" " , carbonaceous shear				
- 53.7	" " , quartz veins 2" at 53.7 and 6" at 53.2				
- 66.9	" "				
- 70.9	Pyrite - Massive, 30% tuff 70% pyrite				
- 72.9	Tuff - andesitic				
- 73.5	Tuff - andesitic streaked with massive pyrite conforming to bedding				
- 503.0	Tuff - andesitic				
	old breaks filled with carbonate				
	177.4 - 177.6, 214.7-214.9, 215.1-215.8,				
	217 - 218.2, 366.8-367.2, 371.5-371.7				
	421.2 - 421.4				
	open shear 421 - 436				
	carbonate vein 443.4 - 444				
	carbonate in old break 456 - 457.2				
	457.9- 458.1				
	shear 477-490, 1" of carbonate at 480				



N.M.P., TORONTO-STOCK FORM NO. 501 REV. 12/51

DRILLED BY Bradville Drilling Company

SIGNED K. M. Brown  
K. M. Brown

# DIAMOND DRILL RECORD

7341823

PROPERTY W. Newton Option - Gillies Limit HOLE NO. N-9

SHE NUMBER 1 SECTION FROM 0.00 TO 258.5 STARTED Aug. 9, 1955  
 LATITUDE 41' N) of #1 post of DATUM \_\_\_\_\_ COMPLETED Aug. 18, 1955  
                   ) Claim T 34179  
 DEPARTURE 84' E) Iron Pin of C-1023 BEARING N 72 -36' W ULTIMATE DEPTH 360'  
 ELEVATION \_\_\_\_\_ DIP 45 PROPOSED DEPTH 360'

DEPTH FEET	FORMATION	SAMPLE NO.	WIDTH OF SAMPLE	GOLD \$	SLUDGE GOLD \$
0.0 - 23.0	Casing collared in overburden				
23.0 - 24.0	Casing collared in rock				
24.0 - 360	Cherty fine grained greenstone with variations from light green to dark green in colour, containing numerous calcite stringers and fracture fillings throughout.				
24.0 - 65	numerous calcite stringers from 20 to 55 to core. Stringers are from 1/8" to 1"				
65 - 92	sheared tuffaceous greenstone				
143.0 - 143.5	calcite filled fracture zone				
148.8 - 149.3	fracture zone healed with calcite with blebs of chalcopyrite				
235 - 249	tuffaceous greenstone				
258 - 258.5	chloritized zone				

