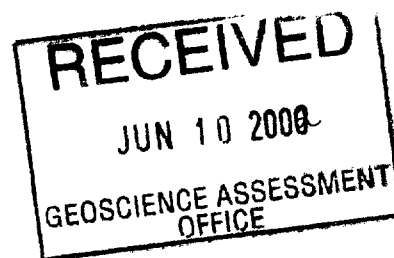


**Cabo Mining Corp.**  
Cobalt Area Project  
Pan Lake Area  
(Lorrain Township, Ontario)

Results from Microdiamond Analysis  
Holes CC-13 & CC-14

June, 2002 - Seymour M. Sears

2.23715



## **Drill Hole Logs & Location Map**

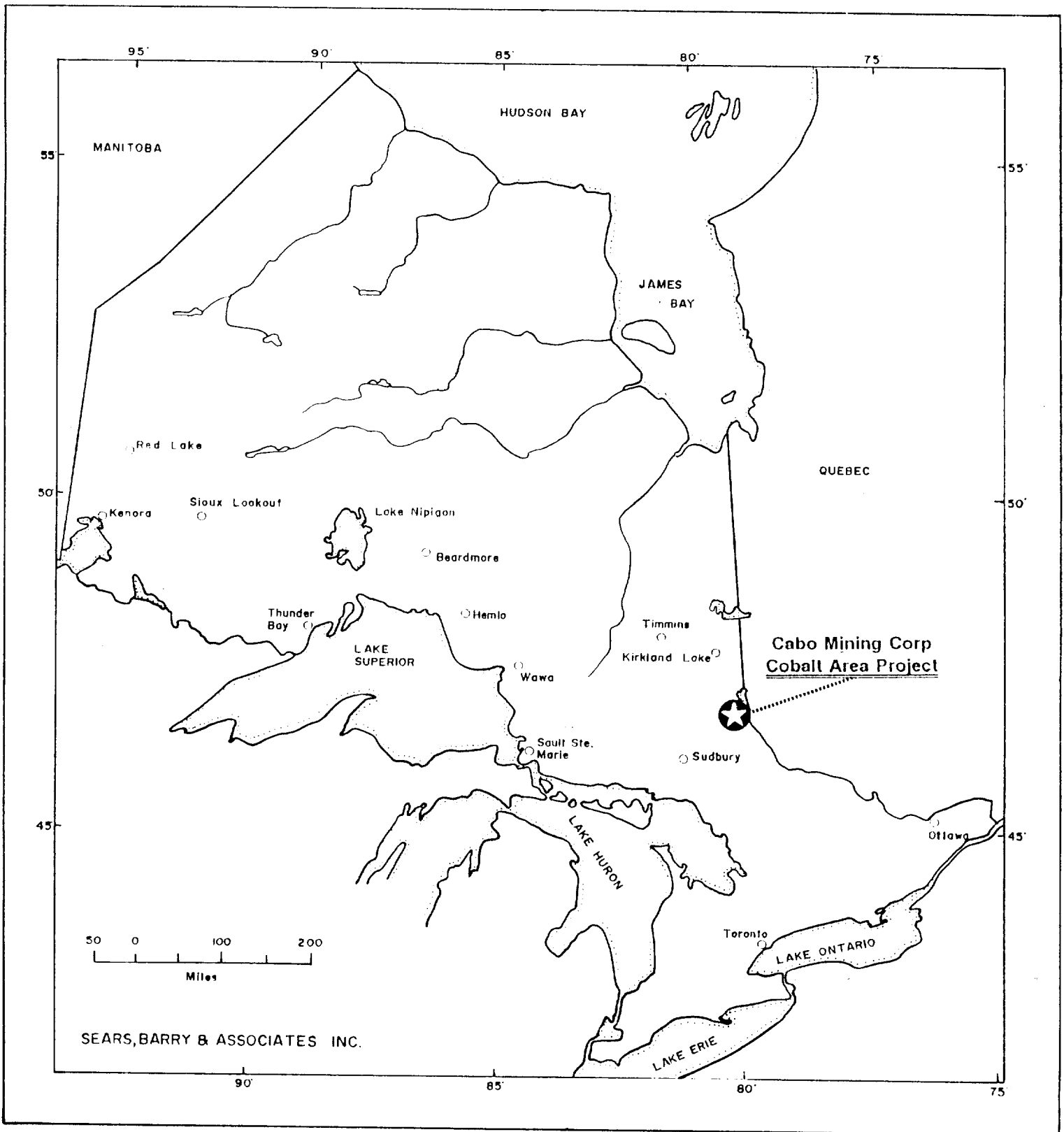
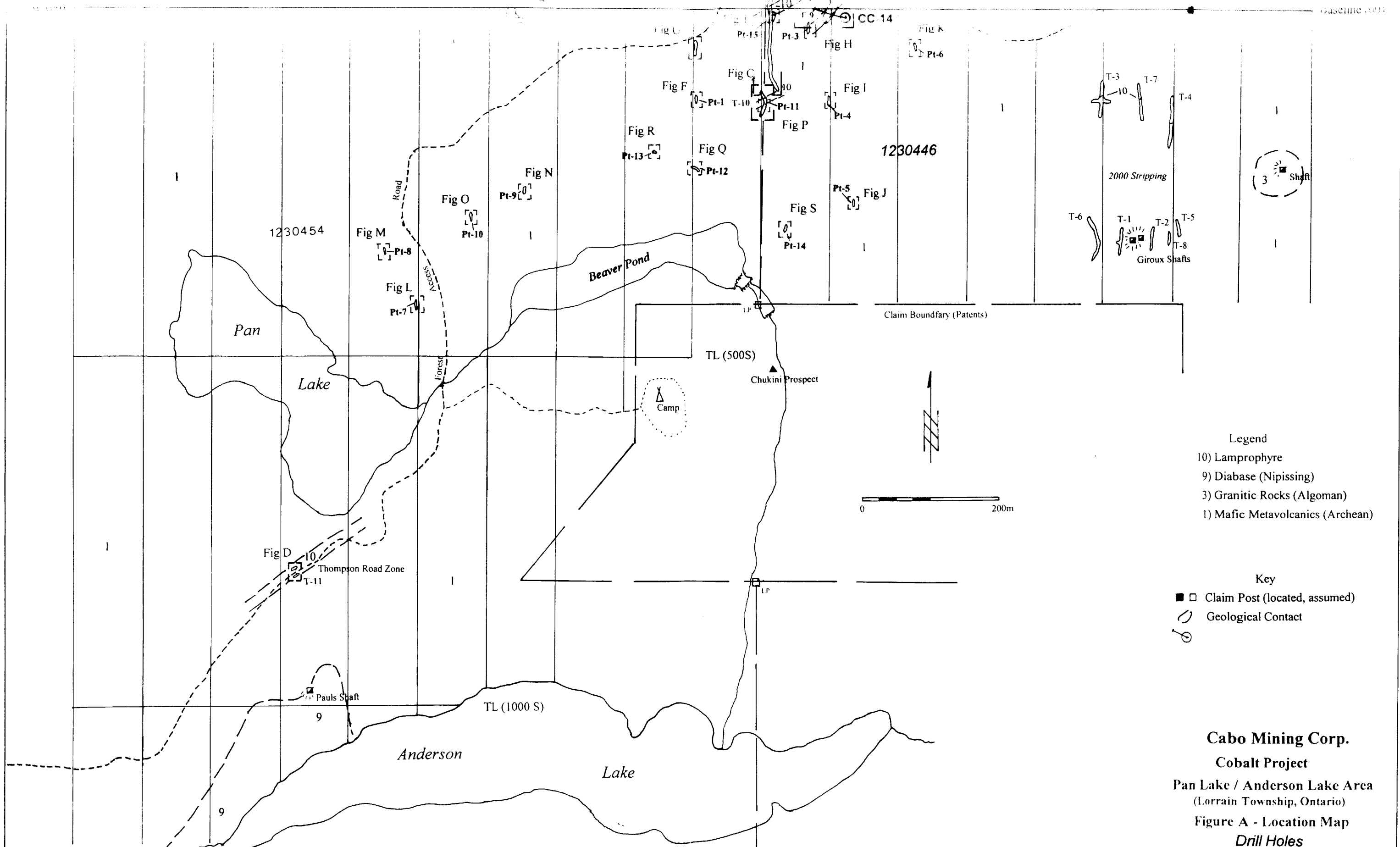


Fig. 1: Regional Location Map of Ontario.



Legend

- 10) Lamprophyre
- 9) Diabase (Nipissing)
- 3) Granitic Rocks (Algonian)
- 1) Mafic Metavolcanics (Archean)

Key

- □ Claim Post (located, assumed)
- Geological Contact

**Cabo Mining Corp.**  
**Cobalt Project**  
 Pan Lake / Anderson Lake Area  
 (Lorrain Township, Ontario)  
 Figure A - Location Map  
 Drill Holes

# CABO MINING CORP.

## DIAMOND DRILL LOG

PROPERTY: Cobalt  
 HOLE No.: CC13  
 Collar Eastings: 1617.00  
 Collar Northings: 54.00  
 Collar Elevation: 340.00  
 Grid: Pan-Anderson  
 Claim# 1225265 Lorrain Twp.

Collar Inclination: -47.00  
 Grid Bearing: 336.00  
 Final Depth: 118.30 metres  
 BQ Core

Logged by: S. Sears (7 May)  
 Date: 10 Feb - 28 March 2002  
 Down-hole Survey: none  
 Frontier Drilling

FROM	TO	LITHOLOGICAL DESCRIPTION	ASSAYS		
			FROM	TO	WIDTH
0	1.7	Casing (Left in place)	0.00	0.00	0.00
1.7	10.8	<p>MAFIC VOLCANIC ROCKS:            Pillowed, variably deformed (weak to highly sheared); medium to dark grey green; local chloritic shears; local epidote stringers and patches; locally amgdaloidal; crude layering, probably shear related, at 45 degrees to the C/A.            Lower contact sharp at 65 degrees to the C/A</p>			
10.8	11.1	<p>LAMPROPHYRE:            Coarse grained; abundant small xenoliths (up to 1 cm.) make up 60 - 80% of rock; heterolithic from feldspar to mafic clasts; lower contact sheared at 20 - 30 degrees to the C/A.</p>			
11.1	11.55	<p>MAFIC VOLCANIC:            As above ( 1.7 - 10.8 metres ).</p>			
11.55	11.68	<p>LAMPROPHYRE:            Biotite is major constituent; medium to</p>			

HOLE No: CC13

# CABO MINING CORP.

## DIAMOND DRILL LOG

PROPERTY: Cobalt  
HOLE No.: CC13

Page 2

---

FROM	TO	LITHOLOGICAL DESCRIPTION	ASSAYS		
			FROM	TO	WIDTH
		coarse crystalline texture.			
11.68	11.92	MAFIC VOLCANIC: As above ( 11.1 - 11.55 metres ) but highly epidotized.			
11.92	12.05	LAMPROPHYRE: Xenolith bearing, biotite matrix; xenoliths highly digested; upper contact 60 - 70 degrees to C/A, lower contact along micro fault at 35 - 40 degrees to C/A.			
12.05	12.4	MAFIC VOLCANIC: As above ( 11.68 - 11.92 metres ).			
12.4	12.9	LAMPROPHYRE: Coarse grained, abundant small xenoliths; heterolithic; xenoliths highly stretched; long axis and shear fabric at 55 - 60 degrees to the C/A. Upper and lower contacts irregular at 35 - 40 degrees to the C/A.			
12.9	13.18	MAFIC VOLCANIC: Layer similar to above.			
13.18	13.3	LAMPROPHYRE: Biotite rich, minor xenoliths; irregular contacts.			

HOLE No: CC13

# CABO MINING CORP.

## DIAMOND DRILL LOG

PROPERTY: Cobalt  
HOLE No.: CC13

Page 3

FROM	TO	LITHOLOGICAL DESCRIPTION	ASSAYS		
			FROM	TO	WIDTH
13.3	15.15	<p>BRECCIA ZONE: Mafic volcanic (50%), Lamprophyre (30%), Quartz and felcite dyke (20%); Lamprophyre is medium grained, biotite rich with rare xenoliths; quartz occurs as irregular veins with felsic (syenite) dyke material and contains pyrite and chalcopyrite. 13.5 - 14.2: Quartz vein with Cpy/Py</p>			
15.15	17.5	<p>LAMPROPHYRE: Coarse grained, abundant, small rounded, partially digested xenoliths; rare calcite stringers.</p>			
17.5	118.3	<p>GABBRO: Dark grey to black; feldspar phyrlic; massive texture, scattered epidote stringers; local narrow syenite dykes; locally sheared and brecciated. 20.4 - 22.4: Sheared and brecciated zone; orangy brown colour; syenite dyke fragments near bottom. 26.5 - 26.7: Syenite dyke, orange, irregular contacts at 40 - 50 degrees to the C/A. 27.15 - 27.5: Syenite dyke similar to</p>			

HOLE No: CC13

# CABO MINING CORP.

## DIAMOND DRILL LOG

PROPERTY: Cobalt  
HOLE No.: CC13

Page 4

FROM	TO	LITHOLOGICAL DESCRIPTION	ASSAYS		
			FROM	TO	WIDTH
		above ( 26.5 - 26.7 ).			
		44.8 - 45.0: Mylonite zone; minor pyrite, quartz and epidote.			
		45.5 - 47.5: Deformed, fractured and epidotized zone.			
		59.55 - 59.7: Quartz vein, scattered Pyrite, Cpy.			
		59.7 - 61.4: Chloritized zone.			
		60.0 - 60.1: Quartz + calcite vein zone.			
		77.5 - 77.8: Mafic dyke, gabbro, fine grained; 35 degrees to C/A.			
		81.4 - 81.5: Quartz-feldspar vein; irregular contacts.			
		81.5 - 82.0: Sheared zone, chlorite, minor lamprophyre, calcite.			
		82.0 - 82.6: Lamprophyre, fine grained, biotite porphyry, no xenoliths.			
		91.7 - 94.3: Fault zone, hematite staining and veinlets, epidote, highly fractured, scattered calcite; slickensided fractures.			
		96.3 - 104.2: Intensely epidotized, local narrow calcite and qtz veinlets with hematite, epidote and minor pyrite; pale green epidote colour over 50% of rock.			
		104.2: Below this point unit becomes finer grained and a pale to medium grey colour overall, probably a contact metamorphic phenomenon (approaching granitic rocks);			

HOLE No: CC13



# CABO MINING CORP.

## DIAMOND DRILL LOG

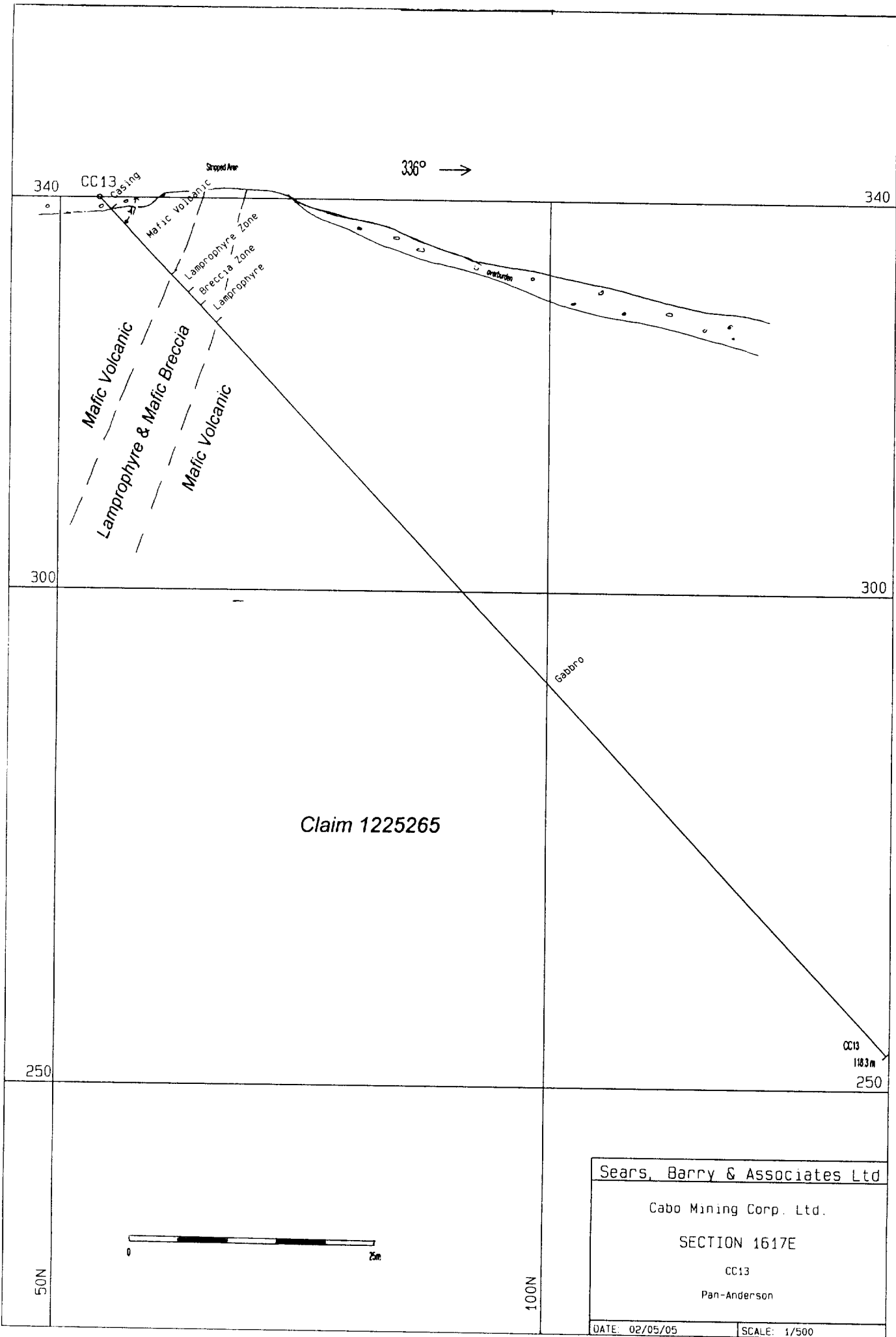
PROPERTY: Cobalt  
HOLE No.: CC13

Page 5

---

FROM	TO	LITHOLOGICAL DESCRIPTION	ASSAYS		
			FROM	TO	WIDTH
		local narrow pale grey to green mylonitized zones with epidote, quartz and minor pyrite; occasional narrow quartz +/- calcite +/- feldspar veinlets and irregular fracture fillings.			
	118.3	E.O.H.			

HOLE No: CC13



340

340

300

300

250

CC13  
118.3m  
250

336° →

Mafic Volcanic

Lamprophyre & Mafic Breccia

Mafic Volcanic

Mafic Volcanic

Lamprophyre Zone

Breccia Zone

Lamprophyre

Preburden

Gabbro

Claim 1225265

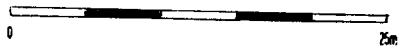
Sears, Barry & Associates Ltd

Cabo Mining Corp. Ltd.

SECTION 1617E

CC13

Pan-Anderson



50N

100N

DATE: 02/05/05

SCALE: 1/500

# CABO MINING CORP.

## DIAMOND DRILL LOG

PROPERTY: Cobalt  
 HOLE No.: CC14  
 Collar Eastings: 1120.00  
 Collar Northings: -15.00  
 Collar Elevation: 340.00  
 Grid: Pan-Anderson  
 Claim# 1230446 Lorrain Twp.

Collar Inclination: -45.00  
 Grid Bearing: 289.00  
 Final Depth: 74.80 metres  
 BQ Core

Logged by: S. Sears (17 April)  
 Date: 28 March - 15 April 2002  
 Down-hole Survey: none  
 Frontier Drilling

FROM	TO	LITHOLOGICAL DESCRIPTION	ASSAYS		
			FROM	TO	WIDTH
0	10.0	OVERBURDEN - (Casing advanced to 12.0 metres)	0.00	0.00	0.00
10.0	10.4	MAFIC VOLCANIC/GABBRO: Dark grey, green; chloritized; scattered angular altered feldspar phenocrysts up to 2 mm; Lower contact vague, 40 degrees to C/A.			
10.4	11.6	VOLCANIC BRECCIA: Heterolithic; mainly granitic clasts up to several cm., mainly less than 1 cm.; rare biotite-lamprophyre as matrix and small clasts; possibly a boulder.			
11.6	11.85	BOULDER TILL: Probably resulting from a deep weathered gully in bedrock.			
11.85	13.8	VOLCANIC BRECCIA: Similar to above (10.4 - 11.6m) except clasts become more clearly defined; clasts mostly granitic (syenite) in composition; one 4 X 6 cm clast of epidotized felsic material at 12.4 m.; scattered lamprophyre clasts or			

HOLE No: CC14

# CABO MINING CORP.

## DIAMOND DRILL LOG

PROPERTY: Cobalt  
HOLE No.: CC14

Page 2

FROM	TO	LITHOLOGICAL DESCRIPTION	ASSAYS		
			FROM	TO	WIDTH
		deformed matrix; scattered epidote stringers.			
13.8	28.6	LAMPROPHYRE BRECCIA (Diatreme?): Similar to the over lying volcanic breccia except lamprophyre content increases, often being the dominant lithology. 17.0 - 18.5: Contains > 50% 19.8 - 22.0: Is 50% lamprophyre 30% overall as large patches and clasts of varying sizes; lamprophyre also appears to occur as matrix, possibly a deformation phenomenon.			
28.6	30.0	MAFIC TO INTERMEDIATE BRECCIA: Less than 10% lamprophyre.			
30.0	34.3	BRECCIA ROCK: Minor lamprophyre. Appears to be sheared syenite (fragmented appearance), small stretched xenoliths, angular to rounded.			
34.4	34.8	COARSE VOLCANIC BRECCIA/DIATREME: Lamprophyre type as above.			
34.8	35.0	LAMPROPHYRE (?): Brownish grey.			

HOLE No: CC14

# CABO MINING CORP.

## DIAMOND DRILL LOG

PROPERTY: Cobalt  
HOLE No.: CC14

Page 3

FROM	TO	LITHOLOGICAL DESCRIPTION	ASSAYS		
			FROM	TO	WIDTH
35.0	35.7	COARSE VOLCANIC BRECCIA/DIATREME: Lamprophyre type as above.			
35.7	36.6	ALTERED LAMPROPHYRE: Chloritized mafic rock with biotite & amphibolite porphyrocrysts.			
36.6	47.5	SYENITE BRECCIA: Brick orange syenite (80%) in a fine grained soft matrix (15%); scattered calcite stringers and hairline fracture filling (5%).			
47.5	50.9	ALTERED LAMPROPHYRE: Soft (like matrix above); biotite lamprophyre? Scattered granitic & "ghost" grey xenoliths. Weak fabric.			
50.9	51.5	SYENITE BRECCIA: (Diatreme) as above 36.6 - 47.5.			
51.5	70.7	BIOTITE LAMPROPHYRE BRECCIA: Dyke (unknown rock) similar to above 47.5 - 50.9, except 5 - 10% syenite fragments of various sizes ( mm to 5 cm ) and shapes ( stretched, angular, rounded, irregular ); Biotite phenocrysts up to 1 cm long.			
70.7	74.8	LAMPROPHYRE BRECCIA:			

HOLE No: CC14

# CABO MINING CORP.

## DIAMOND DRILL LOG

PROPERTY: Cobalt  
HOLE No.: CC14

Page 4

---

FROM	TO	LITHOLOGICAL DESCRIPTION	ASSAYS		
			FROM	TO	WIDTH
		Greenish colour, coarser texture than above, only 10 - 50% xenoliths, xenoliths are increasingly assimilated into matrix.			
		74.8 Hole temporarily abandoned at 74.8 metres.			

HOLE No: CC14

← 289°

340

340

300

300

250

250

74 80 m.  
CC14

Claim 1230446



1100E

Sears, Barry & Associates Ltd

Cabo Mining Corp. Ltd.

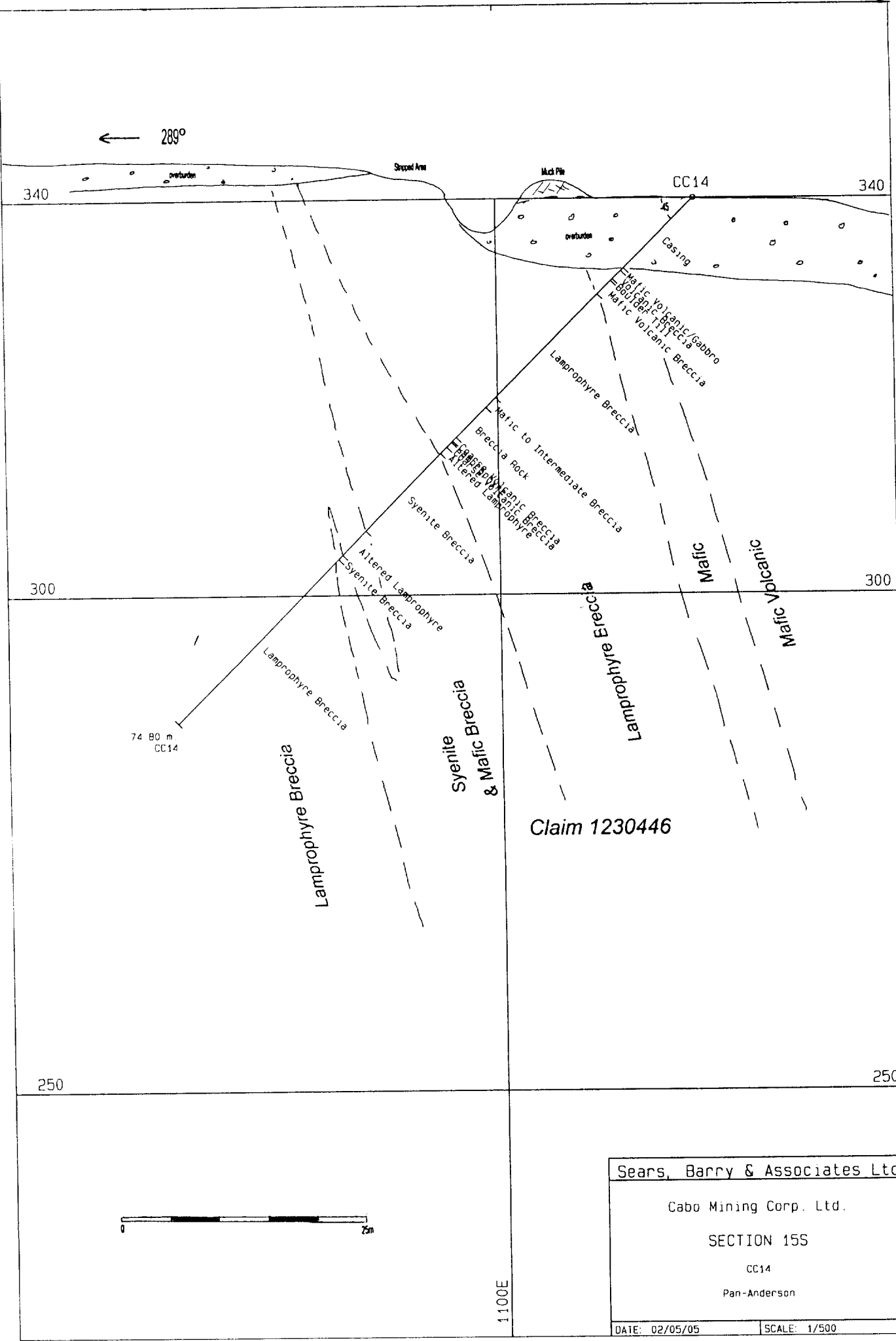
SECTION 15S

CC14

Pan-Anderson

DATE: 02/05/05

SCALE: 1/500



## **Analytical Results**



Cabo Mining Corp.  
Cobalt Area Project  
Pan Lake Area, Lorrain Township  
(Sample Location List)

Sample Locations

Sample #	Hole #	Interval	Length	Weight (Kgs)
02 - 8003	CC-14	13.8m - 22.25m	8.45m	8.0
02 - 8004	CC-14	22.25m - 32.45m	10.2m	8.0
02 - 8005	CC-14	32.45m - 36.6m	4.15m	8.0
02 - 8005(2)	CC-14	(same interval excess sample)	4.15m	1.15
02 - 8007	CC-14	47.5m - 50.9m	3.4m	8
02 - 8009	CC-14	51.5m - 61.1m	9.6m	8
02 - 8010	CC-14	61.1m - 70.7m	9.6m	8
02 - 8012	CC-13	9.69m - 13.47m	2.6m	8
02 - 8014	CC-13	13.47m - 17.5m	4.03m	8

# Geoanalytical Laboratories

Saskatchewan Research Council

125-15 Innovation Blvd.

Saskatoon, Sask.

S7N 2X3

E-mail: [geochemlab@src.sk.ca](mailto:geochemlab@src.sk.ca)

Contact: Allan Holsten

Bernard Gartner

Phone: 306-933-5426

Fax : 306-933-5656

Geoanalytical Laboratories was established in 1972 and provides a wide spectrum of services to the mining industry. We offer standard analytical and mineral processing packages as outlined in our fee schedule. In addition, we also provide cost estimates for customized packages. This customization gives clients flexibility in their exploration programs without any additional costs. We operate 24 hours a day, 7 days a week for your convenience.

All reports are the confidential property of the clients. Publications of statements, conclusions or extracts from these reports are not permitted without the client's written permission.

This copy of results, constitutes the **final official report**. SRC's Geoanalytical Laboratories liability will be limited only to the final official report. It is the client's responsibility to ensure that all interpretation of analysis is done, using data from this report.

The client will not use the name Saskatchewan Research Council in connection with the sale, offer, advertisement or the promotion of any article, product, or company without the prior written consent of SRC.

SRC's Geoanalytical Laboratories liability, if any, will be limited to the cost of performing the analysis.

Reviewed by:

*Penny Miller-Stott*



technology is our business





Saskatchewan Research Council  
125 - 15 Innovation Blvd  
Saskatoon, SK Canada S7N 2X8  
Ph: 306-933-5400 Fax: 306-933-7446  
Internet: <http://www.src.sk.ca>

5-Jun-02

**TO:** Seymour Sears  
Sear, Barry and Associates Ltd.

**FROM:** Al Holsten  
Manager, Geoanalytical Laboratories  
Saskatchewan Research Council  
**PH:** (306)933-5426  
**FAX:** (306)933-5656

**RE:** Results For Sample 02 - 8003

---

KG OF SAMPLE FUSED: 8.00 kg. of sample fused

SIEVE SIZE: 106um

METHOD: Caustic fusion

**RESULTS:**

0 Macrodiamonds, Total weight (mg):, Average weight (mg):  
0 Microdiamonds, Total weight (mg):, Average weight (mg):

QC\QA TRACERS: 10/10 synthetic diamond tracers recovered





Saskatchewan Research Council  
125 - 15 Innovation Blvd.  
Saskatoon, SK Canada S7N 2X8  
Ph: 306-933-5400 Fax: 306-933-7446  
Internet: <http://www.src.sk.ca>

5-Jun-02

**TO:** Seymour Sears  
Sear, Barry and Associates Ltd.

**FROM:** Al Holsten  
Manager, Geoanalytical Laboratories  
Saskatchewan Research Council  
**PH:** (306)933-5426  
**FAX:** (306)933-5656

**RE:** Results For Sample 02 - 8004

---

KG OF SAMPLE FUSED: 8.00 kg. of sample fused

SIEVE SIZE: 106um

METHOD: Caustic fusion

**RESULTS:**

0 Macrodiamonds, Total weight (mg):, Average weight (mg):

0 Microdiamonds, Total weight (mg):, Average weight (mg):

QC/QA TRACERS: 10/10 synthetic diamond tracers recovered





Saskatchewan Research Council  
125 - 15 Innovation Blvd  
Saskatoon, SK Canada S7N 2X8  
Ph: 306-933-5400 Fax: 306-933-7446  
Internet: <http://www.src.sk.ca>

5 Jun-02

**TO:** Seymour Sears  
Sear, Barry and Associates Ltd.

**FROM:** Al Holsten  
Manager, Geoanalytical Laboratories  
Saskatchewan Research Council  
**PH:** (306)933-5426  
**FAX:** (306)933-5656

**RE:** Results For Sample 02 - 8005

---

**KG OF SAMPLE FUSED:** 8.00 kg. of sample fused

**SIEVE SIZE:** 106um

**METHOD:** Caustic fusion

**RESULTS:**

4 Macrodiamonds, Total weight (mg): 4.03

89 Microdiamonds, Total weight (mg): 1.51 , Average weight (mg): 0.02

**QC/QA TRACERS:** 10/10 synthetic diamond tracers recovered

**COMMENTS:** Macrodiamonds are weighed and reported individually. Microdiamonds are collectively weighed and reported. Macrodiamonds are determined by screening through a 500 micron square mesh screen. +500 micron diamonds are designated as macrodiamonds while those below 500 microns are designated as microdiamonds. All diamonds > 212 microns are individually sized and described. Diamonds < 212 microns are counted and the quantity reported in each of the +106 micron and +150 micron fractions.

\* 1 yellow diamond was recovered from +300 micron fraction, 8 from the +150 micron fraction and 2 from the +106 micron fraction. There is a possibility that these diamonds are synthetics. We will be doing cathodoluminescence analysis of these diamonds to determine whether they are synthetic or natural. This process will take several days and therefore we are issuing this preliminary report. A final report will be issued later this week.



Fraction	Diamond Dimensions in mm			Description	Wt. mg
	Microns	L	W		
+1180	1.36	1.20	1.12	White, milky, poly tetrahedroid, etched	2.64
+850	1.20	0.92	0.52	White, milky, broken, stepped face, macle, pitted	0.70
+600	0.80	0.66	0.52	White, milky, stepped face, macle, pitted	0.34
+425	1.00	0.76	0.42	Brown, included, fragment, pitted	0.35
+425	0.56	0.48	0.30	Beige, milky, fragment, rough	
+425	0.56	0.38	0.32	White, milky, fragment, rough	
+300	0.44	0.42	0.20	Yellow, cloudy, fragment, etched *	
+300	0.42	0.40	0.30	White, milky, fragment, pitted (frosted)	
+300	0.34	0.30	0.16	White, milky, macle, pitted (frosted)	
+300	0.46	0.30	0.24	White, milky, fragment, pitted (frosted)	
+212	0.52	0.36	0.14	White, frosted, fragment, pitted	
+212	0.38	0.36	0.22	White, milky, fragment, pitted	
+212	0.46	0.32	0.30	White, milky, broken, twinned, macle, pitted	
+212	0.44	0.32	0.30	White, cloudy, fragment, etched	
+212	0.40	0.28	0.22	White, cloudy, fragment, pitted	
+212	0.32	0.28	0.12	White, cloudy, fragment, pitted	
+212	0.50	0.32	0.22	White, cloudy, fragment, rough	
+212	0.44	0.24	0.12	White, frosted, broken, macle, pitted	
+212	0.34	0.28	0.16	White, milky, fragment, rough	
+212	0.30	0.28	0.26	White, cloudy, fragment, pitted	
+212	0.32	0.30	0.14	White, frosted, fragment, rough	
+212	0.38	0.30	0.20	White, milky, fragment, rough	
+212	0.24	0.22	0.10	White, milky, fragment, rough	
+212	0.40	0.24	0.08	White, milky, fragment, pitted	
+150				34 diamonds recovered *	
+106				33 diamonds recovered *	



Saskatchewan Research Council  
125 - 15 Innovation Blvd.  
Saskatoon, SK Canada S7N 2X8  
Ph: 306-933-5400 Fax: 306-933-7446  
Internet: <http://www.src.sk.ca>

7-Jun-02

**TO:** Seymour Sears  
Sear, Barry and Associates Ltd.

**FROM:** Al Holsten  
Manager, Geoanalytical Laboratories  
Saskatchewan Research Council  
**PH:** (306)933-5426  
**FAX:** (306)933-5656

**RE:** Results For Sample 02 - 8005 (2)

---

KG OF SAMPLE FUSED: 1.30 kg. of sample fused

SIEVE SIZE: 106um

METHOD: Caustic fusion

**RESULTS:**

0 Macrodiamonds, Total weight (mg):, Average weight (mg):  
14 Microdiamonds, Total weight (mg): 0.52, Average weight (mg): 0.037

QC/QA TRACERS: 10/10 synthetic diamond tracers recovered

Comments: Only +0.15mm diamond are documented. + 0.10mm fraction contained 7 diamonds ;  
1 possible corundum found.



Fraction	Diamond Dimensions in mm			Description	Wt. mg
	Microns	L	W		
+425	0.76	0.52	0.40	White, cloudy, fragment, etched	
+300	0.50	0.34	0.28	White, milky, frosted, fragment, pitted	
+300	0.56	0.44	0.40	White, milky, frosted, fragment, rough	
+212	0.50	0.32	0.18	White, milky, fragment, pitted	
+212	0.38	0.36	0.20	White, milky, fragment, pitted	
+150	0.44	0.22	0.12	White, frosted, fragment, pitted	
+150	0.34	0.24	0.08	White, frosted, fragment, pitted	





Saskatchewan Research Council  
125 - 15 Innovation Blvd.  
Saskatoon, SK Canada S7N 2X8  
Ph: 306-933-5400 Fax: 306-933-7446  
Internet: <http://www.src.sk.ca>

5-Jun-02

**TO:** Seymour Sears  
Sear, Barry and Associates Ltd.

**FROM:** Al Holsten  
Manager, Geoanalytical Laboratories  
Saskatchewan Research Council  
**PH:** (306)933-5426  
**FAX:** (306)933-5656

**RE:** Results For Sample 02 - 8007

---

**KG OF SAMPLE FUSED:** 8.00 kg. of sample fused

**SIEVE SIZE:** 106um

**METHOD:** Caustic fusion

**RESULTS:**

0 Macrodiamonds, Total weight (mg):, Average weight (mg):

0 Microdiamonds, Total weight (mg):, Average weight (mg):

**QC/QA TRACERS:** 10/10 synthetic diamond tracers recovered





Saskatchewan Research Council  
125 - 15 Innovation Blvd.  
Saskatoon, SK Canada S7N 2X5  
Ph: 306-933-5400 Fax: 306-933-7446  
Internet: <http://www.srv.sk.ca>

5-Jun-02

**TO:** Seymour Sears  
Sear, Barry and Associates Ltd.

**FROM:** Al Holsten  
Manager, Geoanalytical Laboratories  
Saskatchewan Research Council  
**PH:** (306)933-5426  
**FAX:** (306)933-5656

**RE:** Results For Sample 02 - 8009

---

**KG OF SAMPLE FUSED:** 8.00 kg. of sample fused

**SIEVE SIZE:** 106um

**METHOD:** Caustic fusion

**RESULTS:**

0 Macrodiamonds, Total weight (mg):, Average weight (mg):

0 Microdiamonds, Total weight (mg):, Average weight (mg):

**QC/QA TRACERS:** 9/10 synthetic diamond tracers recovered





technology is our business

Saskatchewan Research Council  
125 - 15 Innovation Blvd.  
Saskatoon, SK Canada S7N 2X8  
Ph: 306-933-5400 Fax: 306-933-7446  
Internet: <http://www.src.sk.ca>

5-Jun-02

**TO:** Seymour Sears  
Sear, Barry and Associates Ltd.

**FROM:** Al Holsten  
Manager, Geoanalytical Laboratories  
Saskatchewan Research Council  
**PH:** (306)933-5426  
**FAX:** (306)933-5656

**RE:** Results For Sample 02 - 8010

---

**KG OF SAMPLE FUSED:** 8.00 kg. of sample fused

**SIEVE SIZE:** 106um

**METHOD:** Caustic fusion

**RESULTS:**

0 Macrodiamonds, Total weight (mg); Average weight (mg):  
0 Microdiamonds, Total weight (mg); Average weight (mg):

**QC/QA TRACERS:** 10/10 synthetic diamond tracers recovered





Saskatchewan Research Council  
 125 - 15 Innovation Blvd  
 Saskatoon, SK Canada S7N 2X8  
 Ph: 306-933-5400 Fax: 306-933-7446  
 Internet: <http://www.src.sk.ca>

5-Jun-02

**TO:** Seymour Sears  
 Sear, Barry and Associates Ltd.

**FROM:** Al Holsten  
 Manager, Geoanalytical Laboratories  
 Saskatchewan Research Council  
 PH: (306)933-5426  
 FAX: (306)933-5656

**RE:** Results For Sample 02 - 8012

KG OF SAMPLE FUSED: 8.00 kg. of sample fused .

SIEVE SIZE: 106um

METHOD: Caustic fusion

**RESULTS:**

0 Macrodiamonds, Total weight (mg):. Average weight (mg):  
 0 Microdiamonds, Total weight (mg):. Average weight (mg):

QC\QA TRACERS: 9/10 synthetic diamond tracers recovered





Saskatchewan Research Council  
125 - 15 Innovation Blvd.  
Saskatoon, SK Canada S7N 2X8  
Ph: 306-933-5400 Fax: 306-933-7446  
Internet: <http://www.src.sk.ca>

5-Jun-02

**TO: Seymour Sears**  
**Sear, Barry and Associates Ltd.**

**FROM: Al Holsten**  
**Manager, Geoanalytical Laboratories**  
**Saskatchewan Research Council**  
**PH: (306)933-5426**  
**FAX: (306)933-5656**

**RE: Results For Sample 02 - 8014**

---

**KG OF SAMPLE FUSED: 8.00 kg. of sample fused**

**SIEVE SIZE: 106um**

**METHOD: Caustic fusion**

**RESULTS:**

**0 Macrodiamonds, Total weight (mg):, Average weight (mg):**

**0 Microdiamonds, Total weight (mg):, Average weight (mg):**

**QC\QA TRACERS: 10/10 synthetic diamond tracers recovered**





Date: 2002-AUG-20

GEOSCIENCE ASSESSMENT OFFICE  
933 RAMSEY LAKE ROAD, 6th FLOOR  
SUDBURY, ONTARIO  
P3E 6B5

OUTCROP EXPLORATIONS LIMITED  
12 MARTIN DRIVE  
COBALT, ONTARIO  
P0J 1C0 CANADA

Tel: (888) 415-9845  
Fax: (877) 670-1555

**Submission Number:** 2.23715  
**Transaction Number(s):** W0280.00990

Dear Sir or Madam

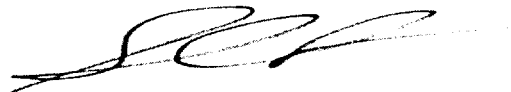
**Subject: Approval of Assessment Work**

We have approved your Assessment Work Submission with the above noted Transaction Number(s). The attached Work Report Summary indicates the results of the approval.

At the discretion of the Ministry, the assessment work performed on the mining lands noted in this work report may be subject to inspection and/or investigation at any time.

If you have any question regarding this correspondence, please contact STEVEN BENETEAU by email at [steve.beneteau@ndm.gov.on.ca](mailto:steve.beneteau@ndm.gov.on.ca) or by phone at (705) 670-5855.

Yours Sincerely,



Sheila Lessard  
Acting Senior Manager, Mining Lands Section

**Cc:** Resident Geologist

Outcrop Explorations Limited  
(Claim Holder)

Seymour M Sears  
(Agent)

Assessment File Library

Outcrop Explorations Limited  
(Assessment Office)

Simon Keith Wareing  
(Claim Holder)



**MINING LAND TENURE  
MAP**

Date / Time of Issue Aug 7 2002 08:50h Eastern

TOWNSHIP / AREA LORRAIN  
PLAN G-3438

ADMINISTRATIVE DISTRICTS / DIVISIONS  
Mining Division Larder Lake  
Land Titles/Registry Division TIMISKAMING  
Ministry of Natural Resources District NORTH BAY

**TOPOGRAPHIC**

- Administrative Boundaries
- Township
- Concession Lot
- Province Park
- Indian Reserve
- CRP, PE and P&E
- Canal
- Canal (Active or Formerly Operational)
- Ship
- Water Head Lake
- Railway
- Road
- Tier
- Natural Gas Pipelines
- Hydro Line
- Communication Lines
- Power Lines
- Minerals and Geological Survey Points - Contour

**LAND TENURE**

**Freehold Patent**

- Surface And Mining Rights
- Surface Rights Only
- Mining Rights Only

**Laboratory Patent**

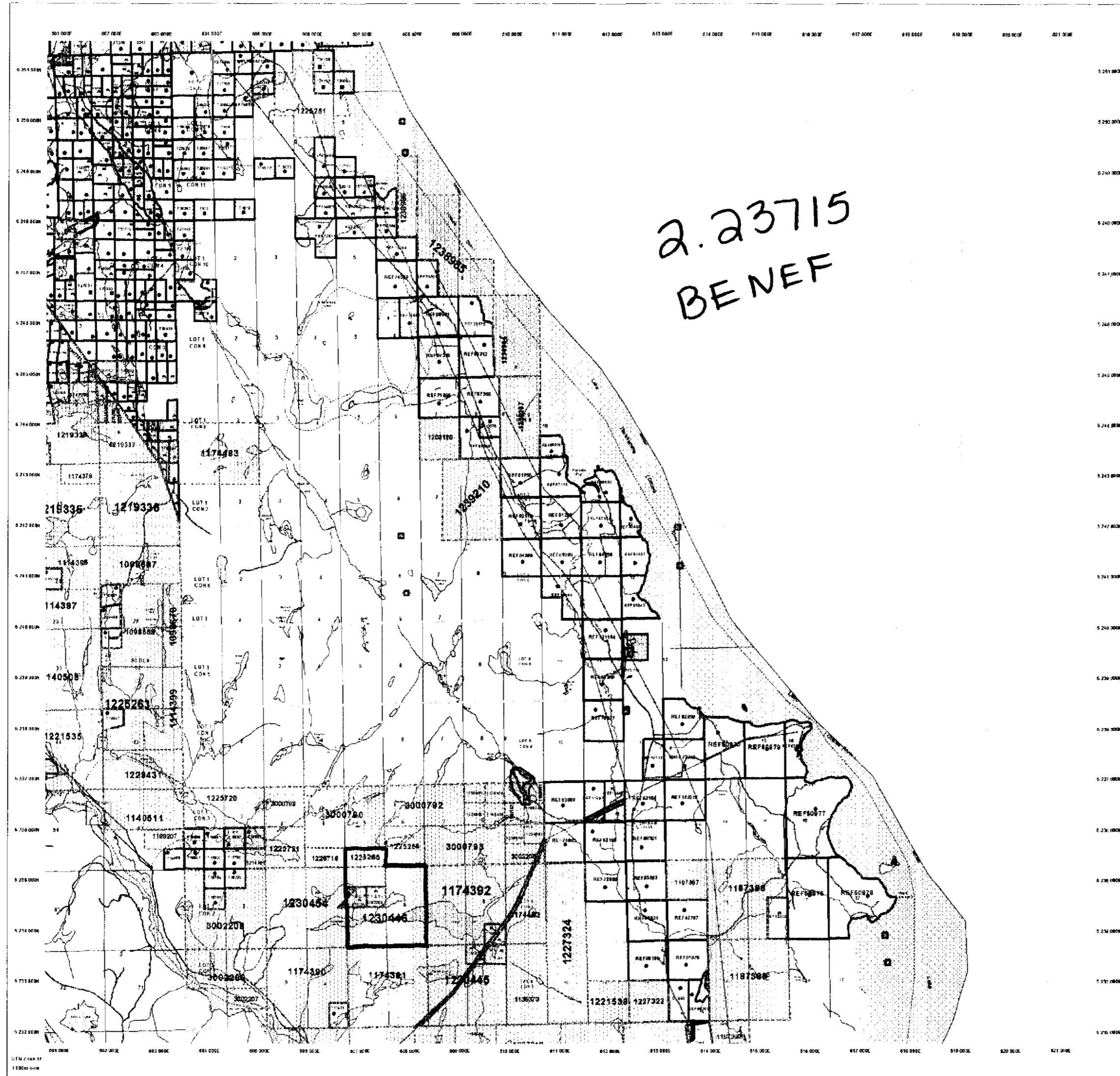
- Surface And Mining Rights
- Surface Rights Only
- Mining Rights Only

**License of Occupation**

- Uses Not Specified
- Surface And Mining Rights
- Surface Rights Only
- Mining Rights Only

**LAND TENURE WITHDRAWALS**

- 1236 - Areas Withdrawn from Disposition Mining Act Withdrawal Types:
  - Wm - Surface and Mining Rights Withdrawal
  - Wc - Surface Rights Only Withdrawal
  - Wm - Mining Rights Only Withdrawal
  - Wm - Other (See Legend for Withdrawal Types)
  - Wm - Surface and Mining Rights Withdrawal
  - Wc - Surface Rights Only Withdrawal
  - Wm - Mining Rights Only Withdrawal
- 1237 - IMPORTANT NOTICES



**LAND TENURE WITHDRAWAL DESCRIPTIONS**

Number	Type	Date	Description
4352	Wm	Jan 9 2001	STARTING OF MINING CLAIMS WITHIN TOWNSHIP ONLY WITH CONSENT OF THE MEMBER
4411	Wm	Jan 9 2001	FLOODING ELEVATION 596.20 FT E.L. 12637
4416	Wm	Jan 5 2001	RESERVATION OF ONE CHAIN FROM HIGH WATER MARK TO BE MADE ON ALL PATENTS OF LANDS BORDERING ON LAKE TIMISKAMING, EFFECTIVE FEBRUARY 13, 1929
4451	Wm	Jan 9 2001	FLOODING ELEVATION: 596.20 FT E.L. 12637
4452	Wm	Jan 5 2001	FLOODING ELEVATION: 596.20 FT E.L. 12637
4456	Wm	Jan 5 2001	RESERVATION OF ONE CHAIN FROM HIGH WATER MARK TO BE MADE ON ALL PATENTS OF LANDS BORDERING ON LAKE TIMISKAMING, EFFECTIVE FEBRUARY 13, 1929
4459	Wm	Jan 5 2001	400 FT SURFACE RIGHTS RESERVATION ALONG THE SHORES OF ALL LAKES & RIVERS
4711	Wm	Jan 9 2001	FLOODING ELEVATION 596.20 FT E.L. 12637
4716	Wm	Jan 5 2001	RESERVATION OF ONE CHAIN FROM HIGH WATER MARK TO BE MADE ON ALL PATENTS OF LANDS BORDERING ON LAKE TIMISKAMING, EFFECTIVE FEBRUARY 13, 1929
W.L. 4303	Wm	Dec 13 1928	SEC. 36, W.L. 4303, R.O. 2000 (2/13/1928)
W.L. 4691	Wm	Nov 17 1928	W.L. 4691, R.F. SEPT. 17 1928, TOWER SITE DUCK HARBOR
W.L. 5076	Wm	Nov 17 1928	W.L. 5076, R.F. SEPT. 17 1928, TOWER SITE DUCK HARBOR
W.L. 5076	Wm	Nov 17 1928	SURFACE RIGHTS WITHDRAWAL FROM STAKING PROSPECTING BY ORDER OF MEMBER'S SEPT. 17 1928 SEARCH
W.L. 5076	Wm	Nov 17 1928	SEC. 36, W.L. 5076, R.F. SEPT. 17 1928, TOWER SITE DUCK HARBOR
W.L. 5076	Wm	Nov 17 1928	W.L. 5076, R.F. SEPT. 17 1928, TOWER SITE DUCK HARBOR
W.L. 4306	Wm	Nov 17 1928	SEC. 36, W.L. 4306, R.F. SEPT. 17 1928 - Notice: this withdrawal area has now been designated as a Conservation Reserve. Contact the Mining Recorder's Office for this regulated boundary as it may go beyond its Withdrawal Order.
Conservation	Wm	Apr 8 2001	Conservation Reserve

**IMPORTANT NOTICES**  
If you are not a party to a withdrawal, you should not be affected by the withdrawal. If you are a party to a withdrawal, you should be notified by the Mining Recorder's Office.

**General Information and Limitations**

This map may not show and apply to land tenure and interests as indicated on certain claims, leases, agreements, rights of way, floating rights, interests of other parties or interests of rights and interests from the Crown, and certain rights reserved and used under the terms of the Mining Act and Regulations.

Contact Information:  
Provincial Mining Recorder's Office 1st Floor  
Waterloo, Ontario  
Tel: 519-885-4155/4665

Map Scale: 1:50,000  
Projection: UTM (NAD 83)

31K0582042 2.23715 LORRAIN  
 200