



31M05SE9710 19 GILLIES LIMIT

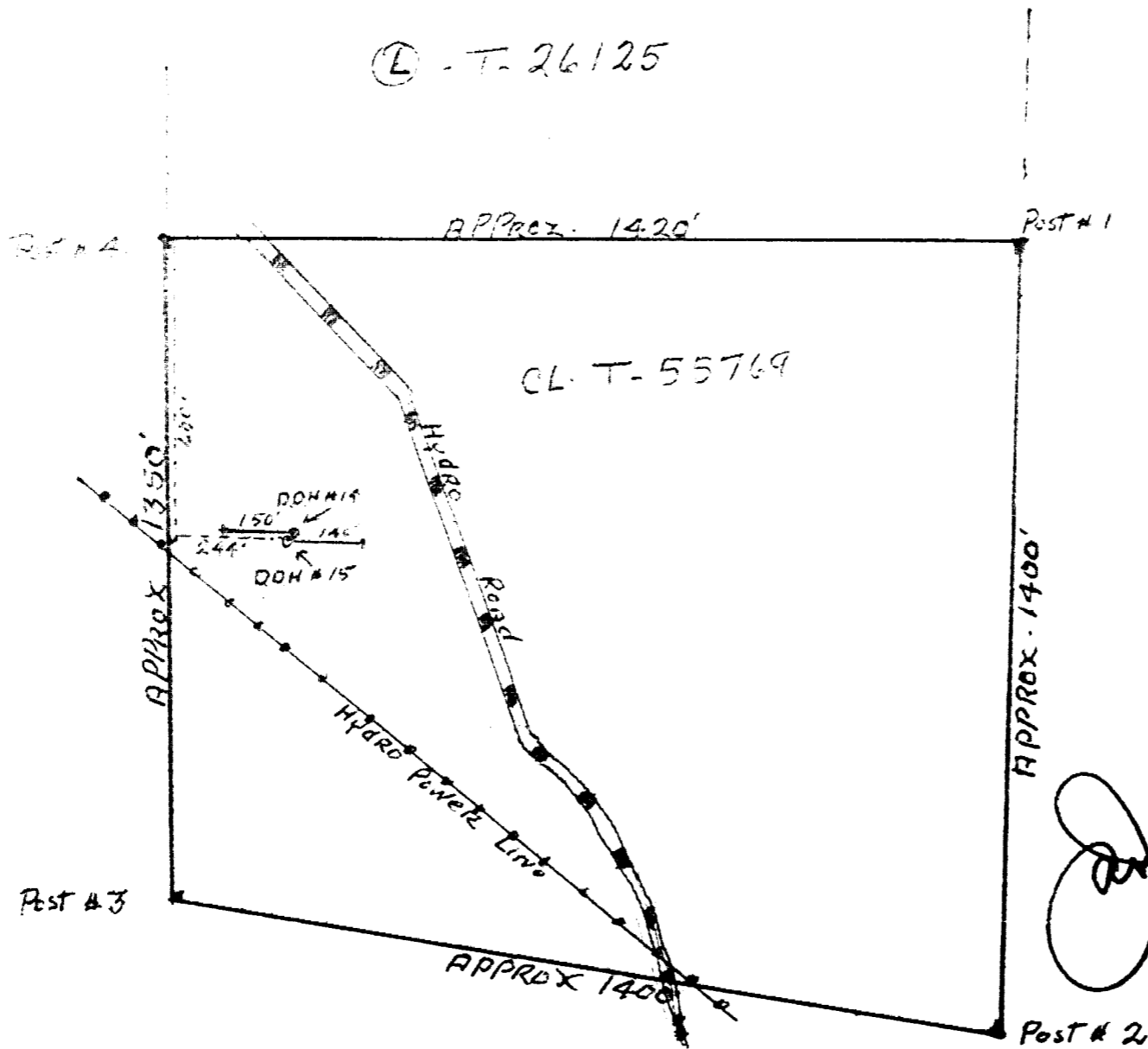
010

This file contains work performed by Ciglen Investments on claims:

T.55769

Hole #C-69-14;	150	1969
C-69-15;	140	1969
	<u>290</u>	

Ⓛ - T-26125



James J. [Signature]

DRILL HOLES No's. 14 & 15 ON CLAIM T-55769
No. 14 " 150' IN LENGTH DIP 30° BEARING Que West
No. 15 " 140 " " " 30° " " East

SCALE - 1" = 330'



THE MINING ACT - DEPARTMENT OF MINES
DIAMOND DRILLING LOG

Start a new page for every new hole, but fill in top portion of form only on first page for each hole.

FILL IN ON EVERY PAGE

HOLE NO. **C-69-14** PAGE NO. **1**

DRILLING COMPANY J.H. Price - Drilling	COLLAR ELEVATION	BEARING OF HOLE FROM TRUE NORTH	TOTAL FOOTAGE 150'	DIP OF HOLE AT COLLAR 30°	LOCATION OF HOLE IN RELATION TO A FIXED POINT ON THE CLAIM 600' South 244' EAST. Post # 4 CLAIM-T-55769	MAP REFERENCE NO. M-483	CLAIM NO. T-55769
DATE COMPLETED Nov. 13th 1969	DATE LOGGED Nov. 14th 1969	LOGGED BY J.H. Price				LOCATION (Tp., Lot, Con. OR Lot. and Long.) Block 53. Gillies Limits	
PROPERTY OR INTEREST Superior Investments		DATE SUBMITTED		SUBMITTED BY (Signature) <i>[Signature]</i>		PROPERTY NAME	

DEPTH	ROCK TYPE	DESCRIPTION Color, grain size, texture, minerals, alteration, etc.	PLANAR FEATURE ANGLE *	CORE SPECIMEN FOOTAGE +	YOUR SAMPLE NUMBER	SAMPLE FOOTAGE		SAMPLE LENGTH	ASSAYS +
						FROM	TO		
10'	Sediments	Fine grained grey wacke							
10'	"	Feldspathic Quartzite							
		2' Broken Core between							
		4" Last " "							
		2' Broken " "							
		5" Last " "							
		1' Broken " "							
		2' 6" " "							
41'	63' 8"	"							
		Fine grained Grey wacke							
		1/4" Pink Calcite stringer at 40' 8"							
		1' Broken Core between							
		1' 4" " "							
		1' 8" " "							
63' 8"	100'	"							
		Feldspathic grey wacke Quartzite							
		5' 8" Broken Core between							
		3" Last Core " "							
		5" " " "							
		5' 2" Broken " "							
		5" Last " "							
		1' 3" Broken " "							
		1' 8" " " "							
100'	150'	"							
		Feldspathic Quartzite							
		10' Broken Core between							
		4' " " "							
		8' " " "							
		1' " " "							
		4' Last Core " "							
		1' 6" Broken " "							
		1' 4" " " "							
		4' " " "							
End of Hole 150 feet.									

* For features such as foliation, bedding, schistosity, measured from the long axis of the core.

+ Additional credit available. See Assessment Work Regulations.



THE MINING ACT - DEPARTMENT OF MINES
DIAMOND DRILLING LOG

Start a new page for every new hole, but fill in top portion of form only on first page for each hole.

FILL IN ON EVERY PAGE

HOLE NO. C-69-15 PAGE NO. 1

DRILLING COMPANY Price-Wellington	COLLAR ELEVATION	BEARING OF HOLE FROM TRUE NORTH Over-East 140	TOTAL FOOTAGE 140	DIP OF HOLE AT COLLAR 30°	LOCATION OF HOLE IN RELATION TO A FIXED POINT ON THE CLAIM 603' South 239' East OF # 4 Post T-55769	MAP REFERENCE NO. M-483	CLAIM NO. T-55769
DATE COMPLETED Nov 13-69	DATE LOGGED Nov 22-69	LOGGED BY T. J. Peck	DATE SUBMITTED Nov 24-69	SUBMITTED BY (Signature) <i>T. J. Peck</i>		LOCATION (Twp., Lot, Con. OR Lat. and Long.) Block 53 Gillics Limits	
PROPERTY NAME Investments							

FROM	TO	ROCK TYPE	DESCRIPTION Colour, grain size, texture, minerals, alteration, etc.	PLANAR FEATURE ANGLE	CORE SPECIMEN FOOTAGE +	YOUR SAMPLE NUMBER	SAMPLE FOOTAGE		ASSAYS +
							FROM	TO	
0	36'8"	Sediments	Greywacke Brecciated with considerable Broken Core + Numerous SLIPs 1/2" Pink Calcite SLIP AT 21'7" 4" Lost Core between 23'8" - 24'						
36'8"	49'	"	Greywacke Calcite SLIPs AT 37'4" - 38' - 39' 1/4" white Calcite stringer AT 45'2"						
49'	60'	"	Feldspathic Quartzite, Considerable Reddish Rock in this section Calcite SLIPs AT 53'4" - 53'7"						
60'	82'	"	Fine grained dark Greywacke 5" Lost Core between 69' - 69'5"						
82'	93'	"	ARKOSE						
93'	101'8"	"	Greywacke Brecciated 4" Broken Core between 75' - 79'						
101'8"	116'10"	"	Greywacke Fine grained badly Broken Core 3" Lost Core between 101'10" - 102'1" 5" " " " 103' - 103'5" 2" " " " 104'4" - 104'6" 6" " " " 105'8" - 106'2" 4" " " " 110'2" - 110'6" 2" Fault gouge Material between 114' - 114'2" Calcite SLIPs AT 114'4"						
116'10"	128'	"	Feldspathic Quartzite Brecciated in sections with Reddish Colored Rock. 3" Lost Core between 119'6" - 119'9" 3" " " " 121'4" - 121'7" Calcite SLIPs AT 122' - 124'6" - 128'						

+ For features such as foliation, bedding, schistosity, measured from the long axis of the core.

+ Additional credit available. See Assessment Work Regulations.

