

Diamond Drilling



31M05SW0006 10 BRIGSTOCKE

010

Township of BRIGSTOCKE

Report No: 10

Work performed by: Cameron Claims

Claim No	Hole No	Footage	Date	Note
37901	1	224.0'	Aug/56	
	2	296.0'	Aug/56	
	3	213.0'	Aug/56	

733

Notes:

DIAMOND DRILL LOG

PROPERTY Cameron Claims, Brigstock Township

D. D. HOLE NO. 23  
PAGE 1

LOCATION ~~710' West 300' North of No. 1 Post~~ 37901

COLLAR: LAT \_\_\_\_\_  
DEP. \_\_\_\_\_  
ELEV. \_\_\_\_\_  
BEARING South 40° West  
DIP -55°

DEPTH OF HOLE \_\_\_\_\_  
STARTED \_\_\_\_\_  
COMPLETED Accep Sept 1936  
DRILLED BY London, Ontario

FROM	TO	DESCRIPTION	SAMPLE NO.	CORE FT.
0	15	Casing		
15	129	DIABASE flesh coloured coarse grained 25' 1" Cu vein with fine dark green basic material 93' 1/2" quartz vein 45°/core		
129	157	DIABASE fine grained dark grey		
157	240	DIABASE light grey becoming coarse grained porphyritic in sections to coarse grained pinkish types		
240	267	DIABASE fine grained grey with some red rock variety		
267	296	DIABASE coarse grained grey to fleshy coloured		
		END OF HOLE		
<b>HOLE NO. 3</b>		located 700' west 310' north of No. 1 Post <sup>37901</sup> — STRIKE - N70W DIP - 55°		
0	12	Casing		
12	105	DIABASE coarse grained colour mixture of green and pink 33' 1" Cu 45°/core 63' 2" fine grained section with 1" blue green Cu 45°/core		
105		DIABASE becoming fine grained with red rock varieties, porphyry types 154 1/2" quartz Cu vein 30°/core with 2' red rock adjoining 190 1/2" quartz vein with breccia 30°/core 195 several narrow quartz fractures		
	213'	END OF HOLE		

SIGNED \_\_\_\_\_  
L. J. CUNNINGHAM B.Sc., P. ENG.

DIAMOND DRILL LOG

D. D. HOLE NO. 1

PROPERTY <sup>South</sup> Cameron Claims, Brigstock Township

PAGE 1

LOCATION 500' W 50' N of No. 1 Post - 37901

COLLAR: LAT. \_\_\_\_\_

DEP. \_\_\_\_\_

ELEV. \_\_\_\_\_

BEARING South 40° W

DIP South 40° W - 55°

DEPTH OF HOLE \_\_\_\_\_

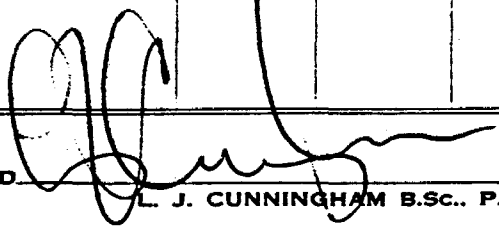
STARTED \_\_\_\_\_

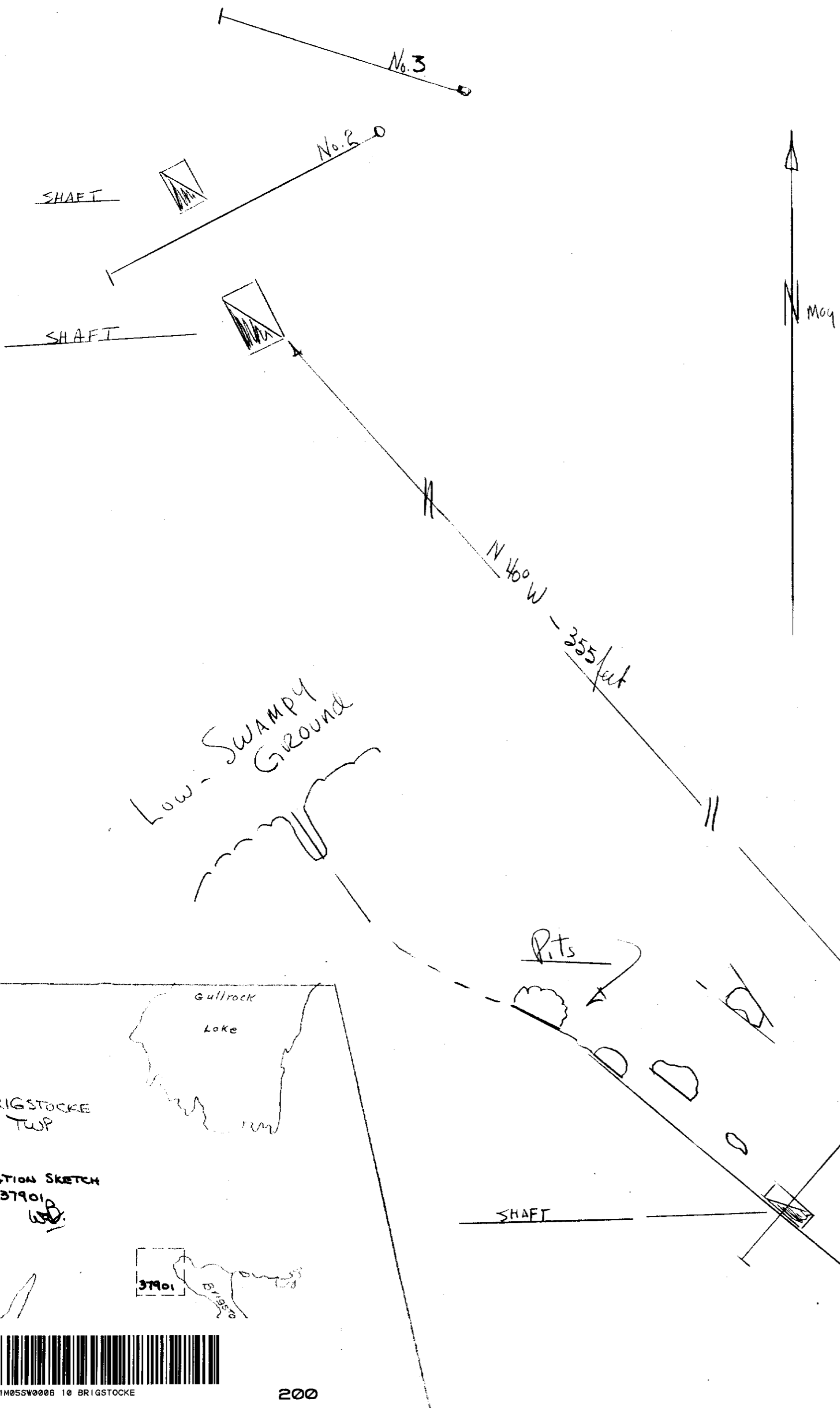
COMPLETED July 1956

DRILLED BY \_\_\_\_\_

FROM	TO	DESCRIPTION	SAMPLE NO.	CORE FT.
0	5	Casing		
5	37	DIABASE Green medium grained spotted with pink feldspar <del>and</del> crystals. 15' 1" Cu 40°/core hematite stain		
37	60	DIABASE altered to red rock fractured light carbonates fractures 30° - 45°/core quartz stringer with chalcopyrite 55' 1" white carbonate 40°/core		
60	88	DIABASE green med. grained 68' leached open vein 40°/core only quartz left.		
88	127	Fine grained diabase sharp contact but no chilled edge 127' considered breakage some red rock variety Hematite stained carbonate fractures 40°/core		
127	152	DIABASE porphyritic dark green with flesh colored phenocrysts		
152	175	DIABASE fine grained grey green fine carbonate fracturing over 25' 152' 1" quartz cu vein 45°/core		
175	225	DIABASE dark green med. grained		
		END OF HOLE		

Core at Cameron's Camp, Anamanipissing Lake

SIGNED  L. J. CUNNINGHAM B.Sc., P. ENG.



SKETCH  
SHOWING  
3 DRILL HOLES  
CAMEKON Group - Brigstocke Twp  
CLAIMS 37898-9 - 37900-01-03  
SCALE 1" = 20'

