

63.4703

SERVICES EXPLORATION SERVICES Enrg.
Reg'd.

TELEPHONE: (819) 742-5498

765, BOUL. QUÉBEC
C.P. 428
ROUYN, P.Q.
J9X 5C4

Dessin et Reproduction
Jalonnement de Claims
Coupage de Lignes
Levés Géophysiques
Levés Géologiques
Programmes d'Exploration
Vente d'articles
d'exploration minière

Drafting and Reproduction Services
Claim Staking
Line Cutting
Geophysical Surveys
Geological Surveys
Exploration Programmes
Sales of mining
exploration articles



31M12NW0001 63.4703 ARMSTRONG

010

NORTARIO LIMESTONE LTD.

SUMMARY EVALUATION
OF
DIAMOND DRILL PROGRAM

Armstrong Twp. Property

85/4/19

OM 84-389

14/4/85



I - INTRODUCTION	P. 1
II - PROPERTY	P. 1
III - LOCATION & ACCESSIBILITY	P. 1
IV - ASSAYS	P. 2
V - RESULTS OF ASSAYS	P. 2
VI - INTERPRETATION OF RESULTS	P. 3
VII - CONCLUSIONS	P. 4
Appendix "A"	Diamond drill program & loggs.
Appendix "B"	Assay results

I - INTRODUCTION:

In order to obtain a summary evaluation of the chemical composition of the limestone beds located on its Armstrong Twp. property, NORTARIO LIMESTONE LTD. has undertaken a diamond drill program, during the month of March, 1985.

Thus, (3) three (100') one hundred foot deep holes were bored north of the old quarry which lies between highway 11 and the Ontario Northland Railway line.

II - PROPERTY:

The NORTARIO LIMESTONE LTD. property includes parcels of land numbered: 12667 S.S.T and 14282 S.S.T. These adjoining parcels are located on lot 6, south half of concession VI, Armstrong Twp., province of Ontario.

III - LOCATION & ACCESSIBILITY:

The NORTARIO LIMESTONE LTD. property lies at a distance of 2 miles north of the town of Earlton and lies within the limits of the Corporation of the Township of Armstrong. It is located immediately east of north-south trending highway 11 and west of the Ontario Northland Railway line.

Access to the property by vehicle or train may be considered as optimum.

IV - ASSAYS:

All of the core obtained from the three diamond drill holes was split: each hole contributed 19 five foot sections; these samples were then sent to Assayers Ltd. in Rouyn, Québec, to be assayed for their content in Calcium oxide (CaO) and Magnesium oxide (MgO).

Subsequent "limestone" composite assays were obtained for the first 20' sections of the three holes and were assayed for the following:

- Loss on ignition (L.O.I.)
- Calcium oxide (CaO)
- Magnesium oxide (MgO)
- Silica oxide (SiO₂)
- Iron oxide (Fe₂O₃)
- Aluminium oxide (Al₂O₃)
- Sulfur oxide (SO₃)
- Phosphurous oxide (P₂O₅)

V - RESULTS OF ASSAYS:

The results of the first series of assays, assays for CaO and MgO, indicate the presence of alternating horizontal beds of Calcium Limestone and Dolomitic Limestone whose thickness vary from 10' to 30'.

The results obtained from the second series of assays, i.e. assays of the "limestone" composite of the first 20' of the three diamond drill holes, confirm the presence of Calcium Limestone but also indicate a relatively high percent of silica, an average of 8.6% SiO₂.

VI - INTERPRETATION OF THE DATA:

NORTARIO LIMESTONE LTD. is presently searching for economic "limestone" deposits amenable for the production of quicklime which would be destined mainly to the gold mining industry of northeastern Ontario and northwestern Québec.


Quicklime is produced by the calcination of "limestone" in rotary kilns. The chemical and physical specifications of quicklime varies according to its use. In the gold mining industry it is used in the flotation process as a "depressant" and as a pH control reagent. About 1.6 pounds of quicklime are required for each ton of ore milled.

Most operations would prefer quicklime containing 85% or more carbonate and silica in the range of 5%.

VII - CONCLUSIONS:

The most important aspect of quicklime is its % of available "lime" as CaO or MgO as it is consumed in the milling process. Impurities such as silica may also be important in determining the quality of quicklime. Metallurgical tests must be completed to evaluate properly the characteristics of any processed "limestone". It shall be possible, only then, to determine if the carbonate and silica contents of the "limestone" located on the Armstrong Twp. property of NORTARIO LIMESTONE LTD. is adaptable to the local gold mining industry.

Respectfully submitted:

E. Chartré, B.A., B. Sc.: 

April 14, 1985.

DIAMOND DRILL PROGRAM:

Three; one hundred foot deep vertical holes were bored on the NORTARIO LIMESTONE LTD. Armstrong Twp. property during the month of March, 1985.

These include holes number: W-1-85, E-2-85 and N-3-85. The holes were located along a surveyed grid: hole no W-1-85 was bored on the base line at 0+00, hole E-2-85 was bored on cross line 0+00 at 1+50E and hole N-3-85 was bored on cross line 3+00N at 1+00E.

The pattern of the above drill program was implemented because it is assumed that assays obtained from vertical bore holes through horizontal "limestone" beds are valid for a radius of 150'.

DIAMOND DRILL RECORD

NORTARIO LIMESTONE LTD.

W-1-85
Hole No.....
Page No.....-1-.....


Footage From - To	Geological & Physical Description	Sample Number	From - To		
0' - 7.5'	OVERBURDEN				
7.5' - 24'	CALCIUM LIMESTONE (grey) Contains 85% nodular grey calcarenite fragments in calcisiltite matrix				
24' - 55-	DOLOMITIC LIMESTONE (beige) Thinly bedded calcisiltite of dolomitic composition, contains occ. fragments of grey calcarenite. 43'-46': numerous mud seams 47'-55': bedding becomes more massive, presence of small white fossils (10%)				
55' - 80'	CALCIUM LIMESTONE (beige) 55'-60': mottled with grey sections of calcarenite 60-68': nodular, beige calcilutite with large nodules of grey chert (10%) 68'-80': nodular grey calcarenite				
80' - 90'	DOLOMITIC LIMESTONE (beige) Varies in color from beige to grey, nodular, fossiliferous				
90' - 100'	CALCIUM LIMESTONE (grey) Nodular calcarenite in silty matrix.				
100'	END OF HOLE W-1-85				
	E. Chartré: <i>E. Chartré</i>				

DIAMOND DRILL RECORD

Hole No. E-2-85

Page No. -1-

NORTARIO LIMESTONE LTD.

Footage From - To	Geological & Physical Description	Sample Number	From - To		
0 - 5'	OVERBURDEN				
5 - 20'	CALCIUM LIMESTONE (grey) Grey, mottled calcarenite fragments in calcisiltite matrix				
20' - 55'	DOLOMITIC LIMESTONE (beige) Thinly bedded calcisiltite of dolomitic composition, contains Occ. fragments of calcarenite 48-53' occ. large fragments				
55' - 80'	CALCIUM LIMESTONE (grey-beige) Mostly grey calcarenite with occ. beige sections of bedded calcisiltite. @ 58' a 6" nodule of grey chert @ 63.5' @ 2" nodule " " 1' of lost core between 75 & 80'				
80' - 90'	DOLOMITIC LIMESTONE (beige) Thinly bedded massive, homogeneous calcisiltite				
90' - 100'	CALCIUM LIMESTONE (grey) Mottled, calcarenite fragments in calcarenite matrix				
100'	END OF HOLE E-2-85				
	E. Chartré: 				
	April 3, 1985				

DIAMOND DRILL RECORD

N-3-85

Hole No.....

Page No..... 1

NORTARIO LIMESTONE LTD.

Footage From - To	Geological & Physical Description	Sample Number	From - To		
0 - 5'	OVERBURDEN				
5 - 21'	CALCIUM LIMESTONE (grey) Mottled calcarenite				
21' - 30'	CALCIUM LIMESTONE (brownish grey) Mottled thinly bedded calcisiltite				
30' - 55'	DOLOMITIC LIMESTONE (beige) Massive calcisiltite with occ grey calcarenite sections				
55' - 87'	CALCIUM LIMESTONE (greyish-brown) Mottled, fossiliferous				
87' - 100'	CALCIUM LIMESTONE (grey) 87'-90': grey mottled calcarenite 90'-95': finely bedded, grey & greyish brown sections with occ. small fossils 95'-100': massive beige calcisiltite interlayered with occ. grey calcarenite & occ. chalk white sections				
100'	END OF HOLE N-3-85				
	E. Chartré: <i>EJC</i>				
	April 3, 1985				

ASSAY RESULTS

Footage	%	Hole number: W-1		E-2		N-3	
		CaO	MgO	CaO	MgO	CaO	MgO
5 - 10"		44.07	2.92	44.68	2.22	48.45	2.02
10 - 15'		46.80	2.30	42.43	2.35	44.86	3.22
15 - 20'		42.73	4.08	44.54	2.74	45.33	3.68
20 - 25'		36.44	9.60	34.11	10.53	34.21	8.41
25 - 30'		26.12	10.61	49.83	1.62	49.55	1.11
30 - 35'		36.06	12.85	36.68	11.27	36.06	15.42
35 - 40'		31.01	17.49	29.94	10.98	30.04	17.99
40 - 45'		34.11	13.26	29.71	17.08	32.30	15.75
45 - 50'		36.06	14.21	33.31	14.46	37.43	12.38
50 - 55'		29.28	17.82	27.17	18.07	34.42	13.26
55 - 60'		45.44	4.97	42.95	6.05	47.35	4.97
60 - 65'		45.99	1.49	43.93	1.33	43.47	1.53
65 - 70'		44.38	0.83	41.85	0.98	46.35	0.65
70 - 75'		46.03	1.03	43.17	1.24	42.73	1.38
75 - 80'		43.03	5.12	36.38	8.39	34.72	11.61
80 - 85'		26.56	17.67	25.96	19.53	26.43	19.41
85 - 90'		26.56	16.02	31.40	11.95	35.02	7.61
90 - 95'		49.55	2.02	45.44	1.96	43.31	1.72
95 - 100'		44.87	3.00	43.17	3.61	43.33	3.13
Average for 19 samples		38.69	8.28	38.24	8.12	39.76	7.64

General average for 57 samples: CaO = 38.90%

MgO = 8.01%

NORTARIO LIMESTONE LTD. - ASSAYS OF LIMESTONE COMPOSITES - ARMSTRONG TWP. PROPERTY - LOT 6 - CON

HOLE NO. W-1-85

<u>Sample Number</u>	<u>Footage</u>	<u>L.O.I.</u>	<u>CaO</u>	<u>MgO</u>	<u>SiO₂</u>	<u>Fe₂O₃</u>	<u>Al₂O₃</u>	<u>SO₃</u>	<u>P₂O₅</u>
E-1-85 - 1	7.5 - 10'	%	%	%	%	%	%	%	%
E-2-85 - 1	10.0 - 15'								
E-3-85 - 1	15.0 - 20'	39.06	44.22	4.14	8.32	0.86	1.81	0.85	0.027
E-4-85 - 1	20.0 - 25'								

HOLE NO. E-2-85

E-1-85 - 2	5.0 - 10'								
E-2-85 - 2	10.0 - 15'								
E-3-85 - 2	15.0 - 20'	38.36	42.56	4.18	10.06	0.60	1.62	0.28	0.020
E-3-85 - 2	20.0 - 25'								

HOLE NO. N-3-85

E-1-85 - 3	5.0 - 10'								
E-2-85 - 3	10.0 - 15'								
E-3-85 - 3	15.0 - 20'	39.90	44.70	4.07	7.45	0.67	1.85	0.37	0.018
E-4-85 - 3	20.0 - 25'								

Lyonsville Twp.
Armstrong Twp.



NORTARIO LIMESTONE LTD.

PLAN INDICATING DIAMOND DRILL HOLE LOCATIONS

HIGHWAY 11 NORTH

Base Line

Surveyed Line

Surveyed Line

— 19+00 N

— 16+00 N

— 13+00 N

— 10+00

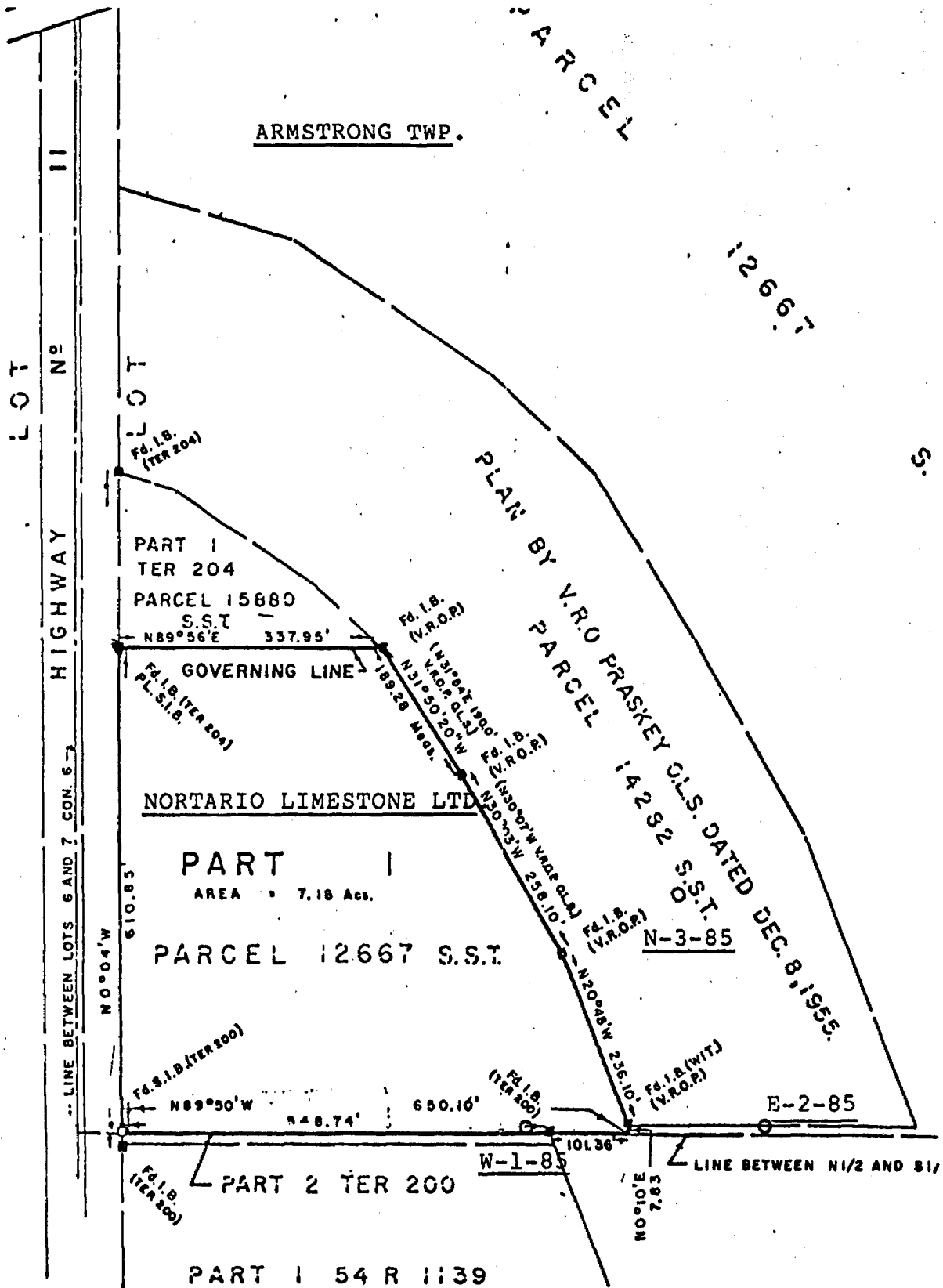
N-3-85

Diamond Drill Hole no W-1-85 Diamond Drill Hole no E-2-85

BUILDINGS

Surveyed post

DATE	November 1984	SCALE	1" = 200'
DRAWN BY		CHECKED BY	



Fd. I.B. (TER 204)

PART I
TER 204
PARCEL 15880
S.S.T.
N89°56'E 337.95'

Fd. I.B. (TER 204)
PL. S.I.B.

Fd. I.B. (V.R.O.P.)
(N33°52'19" E 181.8'
N31°50'20" W 212.0'
N30°53' W 258.10'

NORTARIO LIMESTONE LTD.

PART I
AREA = 7.18 Acs.

PARCEL 12667 S.S.T.

N0°04'W 610.85'

Fd. S.I.B. (TER 200)
N89°50'W 348.74'

Fd. I.B. (TER 200)
650.10'

Fd. I.B. (WIT) (V.R.O.P.)

E-2-85

Fd. I.B. (TER 200)

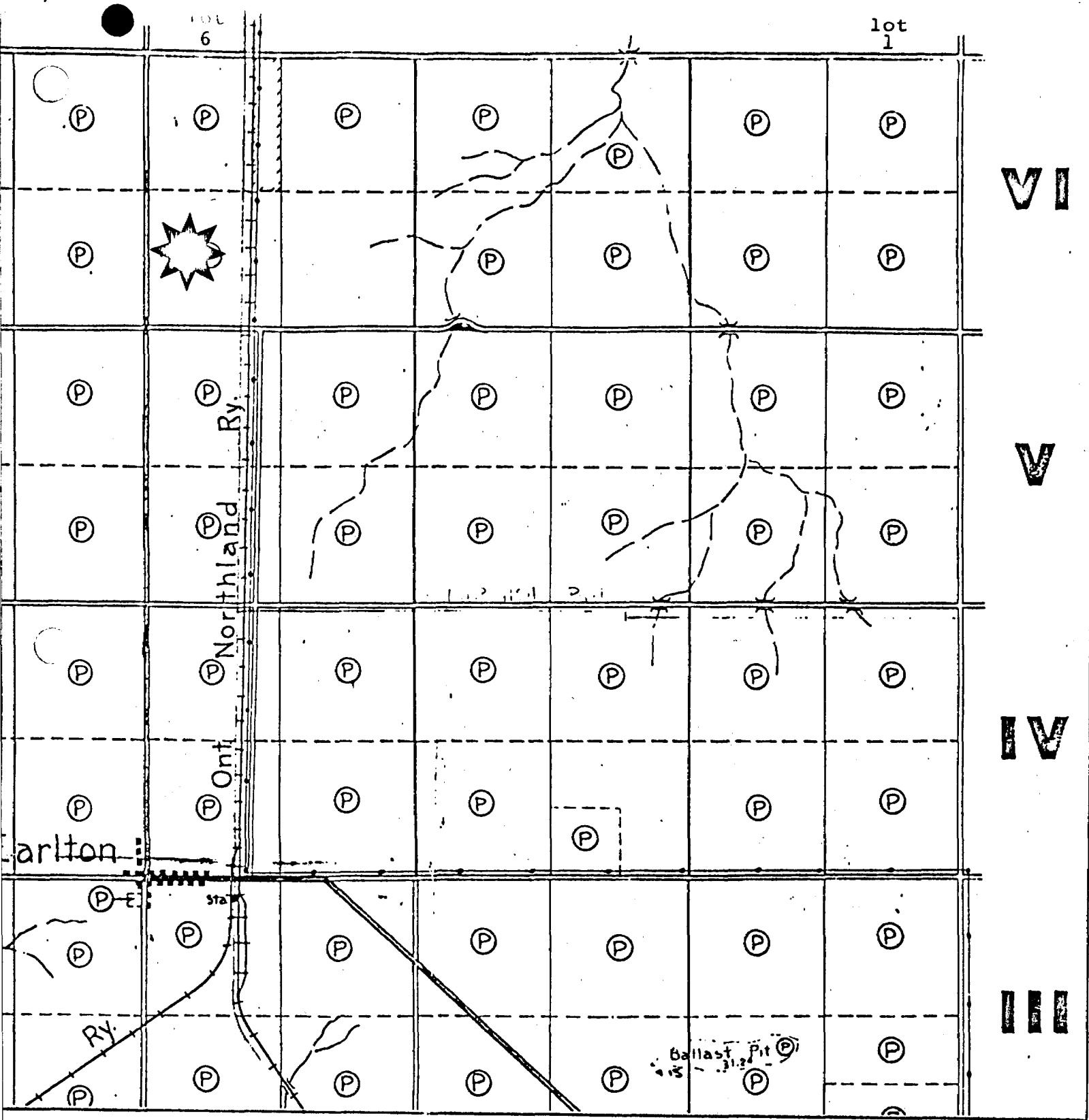
PARCEL 2 TER 200

W-1-85

387.30
N0°10'E

PARCEL 1 54 R 1139

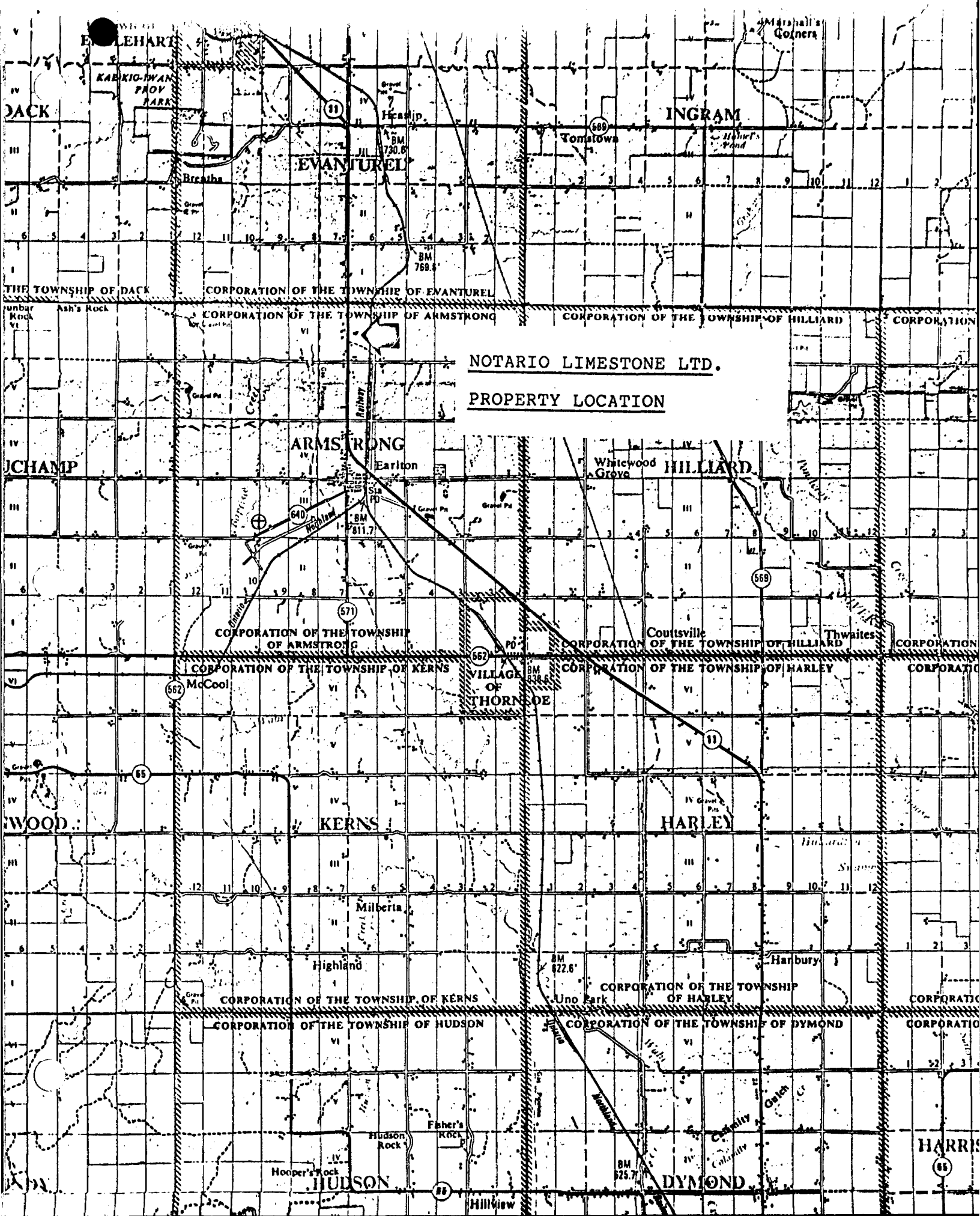
1" = 200'



NORTARIO LIMESTONE LTD.

PROPERTY LOCATION

1" = 1/2 mi.



NOTARIO LIMESTONE LTD.
PROPERTY LOCATION

LEHART
KABKIG-IWAN PAOV PARK

DACK

EVANTUREL

INGRAM

THE TOWNSHIP OF DACK

CORPORATION OF THE TOWNSHIP OF EVANTUREL

CORPORATION OF THE TOWNSHIP OF ARMSTRONG

CORPORATION OF THE TOWNSHIP OF HILLIARD

CORPORATION

CHAMP

ARMSTRONG

HILLIARD

CORPORATION OF THE TOWNSHIP OF ARMSTRONG

CORPORATION OF THE TOWNSHIP OF HILLIARD

CORPORATION

CORPORATION OF THE TOWNSHIP OF KERNS

VILLAGE OF THORNHOLE

CORPORATION OF THE TOWNSHIP OF HARLEY

CORPORATION

WOOD

KERNS

HARLEY

CORPORATION OF THE TOWNSHIP OF KERNS

CORPORATION OF THE TOWNSHIP OF HARLEY

CORPORATION

CORPORATION OF THE TOWNSHIP OF HUDSON

CORPORATION OF THE TOWNSHIP OF DYMOND

CORPORATION

HUDSON

DYMOND

HARRIS



ASSAYERS LIMITED

QUEBEC: 183 RUE GAMBLE O., C.P. 665 - ROUYN, J9X 2R8 - TEL: (819) 762-3010

ONTARIO: 20 VICTORIA STREET, SUITE 506 - TORONTO, M5C 2N8 - TEL: (416) 366-3100

CERTIFICATE OF ANALYSIS

FOR Nortario Limestone Ltd.

E. Bedard

Copy: E. Chartre

LAB NO.	SAMPLE NO.	GOLD OZ. PER TON	SILVER OZ. PER TON	COPPER %	ZINC %	CaO %	MgO %	
10942	E-1-85 1					44.07	2.92	
3	2					44.68	2.22	
4	3					48.45	2.02	
5	E-2-85 1					46.80	2.30	
6	2					42.43	2.35	
7	3					44.86	3.22	
8	E-3-85 1					42.73	4.08	
9	2					44.54	2.74	
10950	3					43.33	3.68	
1	E-4-85 1					36.44	9.60	
2	2					34.11	10.53	
3	3					34.21	8.41	
4	E-5-85 1					26.12	10.61	
5	2					49.83	1.62	
6	3					49.55	1.11	
7	E-6-85 1					36.06	12.85	
8	2					36.68	11.27	
9	3					36.06	15.42	
10960	E-7-85 1					31.01	17.49	
10961	2					29.94	18.98	

DATE

March 29, 1985

CERTIFIED CORRECT

[Handwritten signature]

UNLESS IT IS SPECIFICALLY STATED OTHERWISE GOLD AND SILVER VALUES REPORTED ON THESE SHEETS HAVE NOT BEEN ADJUSTED TO COMPENSATE FOR LOSSES AND GAINS INHERENT IN THE FIRE ASSAY PROCESS.
SAUF MENTION CONTRAIRE, LES ESSAIS POUR L'OR ET L'ARGENT, NE SONT PAS CORRIGES POUR LES PERTES ET GAINS QUI SONT INHERENTS AU PROCÉDÉ D'ANALYSE





ASSAYERS LIMITED

QUEBEC: 183 RUE GAMBLE O., C.P. 665 - ROUYN, J9X 2R8 - TEL: (819) 762-3010

ONTARIO: 20 VICTORIA STREET, SUITE 506 - TORONTO, M5C 2N8 - TEL: (416) 366-3100

CERTIFICATE OF ANALYSIS

FOR Nortario Limestone Ltd.

E. Bedard

Copy: E. Chartre

LAB NO.	SAMPLE NO.	GOLD OZ. PER TON	SILVER OZ. PER TON	COPPER %	ZINC %	CaO %	MgO %	
10962	E-7-85 3					30.04	17.99	
10963	E-8-85 1					34.11	13.26	
4	2					29.71	17.08	
10965	3					32.30	15.75	
11099	E-9-85 1					36.06	14.21	
11101	2					33.31	14.46	
11100	3					37.43	12.38	
11102	E-10-85 1					29.28	17.82	
3	2					27.17	18.07	
4	3					34.42	13.26	
5	E-11-85 1					45.44	4.97	
6	2					42.95	6.05	
7	3					47.35	4.97	
8	E-12-85 1					45.99	1.49	
9	2					43.93	1.33	
11110	3					43.47	1.53	
1	E-13-85 1					44.38	0.83	
2	2					41.85	0.98	
3	3					46.35	0.65	
11114	E-14-85 1					46.03	1.03	

DATE

March 29, 1985

CERTIFIED CORRECT

[Handwritten signature]

UNLESS IT IS SPECIFICALLY STATED OTHERWISE GOLD AND SILVER VALUES REPORTED ON THESE SHEETS HAVE NOT BEEN ADJUSTED TO COMPENSATE FOR LOSSES AND GAINS INHERENT IN THE FIRE ASSAY PROCESS.
SAUF MENTION CONTRAIRE, LES ESSAIS POUR L'OR ET L'ARGENT, NE SONT PAS CORRIGES POUR LES PERTES ET GAINS QUI SONT INHERENTS AU PROCÉDÉ D'ANALYSE.





**ASSAYERS
LIMITED**

QUEBEC: 183 RUE GAMBLE O., C.P. 665 - ROUYN, J9X 2R8 - TEL: (819) 762-3010

ONTARIO: 20 VICTORIA STREET, SUITE 506 - TORONTO, M5C 2N8 - TEL: (416) 366-3100

CERTIFICATE OF ANALYSIS

FOR **Nortario Limestone Ltd.**

E. Bedard

Copy: **E. Chartre**

LAB NO.	SAMPLE NO.	GOLD OZ. PER TON	SILVER OZ. PER TON	COPPER %	ZINC %	CaO %	MgO %
11115	E-14-85 2					43.17	1.24
6	3					42.73	1.38
7	E-15-85 1					43.03	5.12
8	2					36.38	8.39
9	3					34.72	11.61
11120	E-16-85 1					26.56	17.67
1	2					25.96	19.53
2	3					26.43	19.41
3	E-17-85 1					26.56	16.02
4	2					31.40	11.95
5	3					35.02	7.61
6	E-18-85 1					49.55	2.02
7	2					45.44	1.96
8	3					43.31	1.72
9	E-19-85 1					44.87	3.00
11130	2					43.17	3.61
11131	3					43.33	3.13

DATE

March 29, 1985

CERTIFIED CORRECT

[Handwritten signature]

UNLESS IT IS SPECIFICALLY STATED OTHERWISE GOLD AND SILVER VALUES REPORTED ON THESE SHEETS HAVE NOT BEEN ADJUSTED TO COMPENSATE FOR LOSSES AND GAINS INHERENT IN THE FIRE ASSAY PROCESS.
SAUF MENTION CONTRAIRE, LES ESSAIS POUR L'OR ET L'ARGENT, NE SONT PAS CORRIGES POUR LES PERTES ET GAINS QUI SONT INHERENTS AU PROCEDURE D'ANALYSE.





ASSAYERS LIMITED

QUEBEC: 183 RUE GAMBLE O., C.P. 685 - ROUYN, J9X 2R8 - TEL: (819) 762-3010

ONTARIO: 20 VICTORIA STREET, SUITE 506 - TORONTO, M5C 2N8 - TEL: (416) 366-3100

ROUYN, QUE. April 9, 1985

CERTIFICATE OF ANALYSIS

Received from: Nortario Limestone
 Reçu de: _____

Date Received: March/85
 Reçu le: _____

Samples of: Limestone Composites
 Echantillons de: _____

Identification: See below.

LAB NO.	SAMPLE	L. O. I. %	CaO %	MgO %	SiO ₂ %	Fe ₂ O ₃ %	Al ₂ O ₃ %	SO ₃ %	P ₂ O ₅ %
Hole W-1-85									
10942	E-1-85-1								
10945	E-2-85-1								
10948	E-3-85-1								
10951	E-4-85-1	39.06	44.22	4.14	8.32	0.86	1.81	0.85	0.027
Hole E-2-85									
10943	E-1-85-2								
10946	E-2-85-2								
10949	E-3-85-2								
10952	E-4-85-2	38.36	42.56	4.18	10.06	0.60	1.62	0.28	0.020
Hole N-3-85									
10944	E-1-85-3								
10947	E-2-85-3								
10950	E-3-85-3								
10953	E-4-85-3	39.90	44.70	4.07	7.45	0.67	1.85	0.37	0.018

ASSAYERS LIMITED

PER
PAR

ASSAYERS - SHIPPERS' REPRESENTATIVES - CONSULTANTS

"AU SERVICE DE L'INDUSTRIE DEPUIS PLUS DE 40 ANS"

"SERVING INDUSTRY FOR OVER 40 YEARS"



SERVICES EXPLORATION SERVICES Enrg.
Reg'd.

TELEPHONE: (819) 762-5498

765, BOUL. QUÉBEC
C.P. 428
ROUYN, P.Q.
J9X 5C4

Dessin et Reproduction
Jalonement de Claims
Coupage de Lignes
Levés Géophysiques
Levés Géologiques
Programmes d'Exploration
Vente d'articles
d'exploration minière

Drafting and Reproduction Services
Claim Staking
Line Cutting
Geophysical Surveys
Geological Surveys
Exploration Programmes
Sales of mining
exploration articles

NORTARIO LIMESTONE LTD.

SUMMARY EVALUATION
OF
DIAMOND DRILL PROGRAM

Armstrong Twp. Property

85/5/13

13/5/88

SUMMARY

I - INTRODUCTION	P. 1
II - PROPERTY	P. 1
III - LOCATION & ACCESSIBILITY	P. 1
IV - DIAMOND DRILL PROGRAM	P. 2
V - ASSAYS - PHASE 1	P. 3
VI - RESULTS OF ASSAYS - PHASE 1	P. 3
VII - INTERPRETATION OF DATA	P. 4
VIII - RESULTS OF ASSAYS - PHASE 2	P. 5
IX - ESTIMATION OF RESERVES	P. 5
X - CONCLUSIONS & RECOMMENDATIONS	P. 6
Plate I - Sketch of surveyed land parcels	P. 7
Plate II - Sketch of diamond drill hole locations	P. 8
Plate III - Sketch of property location	P. 9
Appendix "A" Diamond drill record and assays - phase 1	
Appendix "B" Diamond drill record and assays - phase 2	
Appendix "C" Summary of assays	

I - INTRODUCTION:

In order to obtain a summary evaluation of the chemical composition and potential reserves of the limestone beds located on its Armstrong Twp. property, NORTARIO LIMESTONE LTD., has undertaken an initial diamond drill program during the month of March, 1985, and a subsequent diamond drill program, during the month of April, 1985.

Thus three (3) one hundred foot deep holes were bored initially, immediately north of the old quarry which lies between highway 11 and the Ontario Northland Railway line. Subsequently, five (5) additional holes were bored to a depth of 28'.

II - PROPERTY:

The NORTARIO LIMESTONE LTD. property includes parcels of land numbered: 12667 S.S.T. and 14282 S.S.T. These adjoining parcels are located on lot 6, south half, concession VI, Armstrong Twp., Ontario.

III - LOCATION & ACCESSIBILITY:

The NORTARIO LIMESTONE LTD. property lies at a distance of 2 miles north of the town of Earleton and within the limits of the Corporation of the township of Armstrong. It is located immediately east of north-south trending highway 11 and west of the Ontario Northland Railway line.

IV - DIAMOND DRILL PROGRAM:

Within the first phase of the diamond drill program, three, one hundred foot deep vertical holes were bored on the NORTARIO LIMESTONE LTD. Armstrong Twp. property during the month of March, 1985.

These include holes number: W-1-85, E-2-85 and N-3-85. The holes were located along a surveyed grid: hole no. W-1-85 was bored on the base line at 0+00, hole E-2-85 was located on cross line 0+00 at 1+50 E and hole no. N-3-85 was bored on cross line 3+00N at 1+00 E.

A second series of 5 diamond drill holes (phase 2), were bored during the month of April, 1985. These are described as follows:

<u>Hole no.</u>	<u>Location</u>	<u>Depth</u>
N-4-85	L 3N - 1+00W	22'
N-5-85	L 6N - 2+00W	27'
N-6-85	L 6N - 0+50E	28'
N-7-85	L 9N - 0+50W	27'
N-8-85	L 9N - 3+00W	24'

V - ASSAYS:

All of the core obtained from the three diamond drill holes was split: each hole contributed 19 five foot sections; these samples were then sent to Assayers Ltd. in Rouyn, Québec, to be assayed for their content in Calcium oxide (CaO) and Magnesium oxide (MgO).

Subsequent "limestone" composite assays were obtained for the first 20' sections of the three holes and were assayed for the following:

Loss on ignition (L.O.I.)
Calcium oxide (CaO) X 1.7
Magnesium oxide (MgO) X 2
Silica oxide (SiO₂)
Iron oxide (Fe₂O₃)
Aluminium oxide (Al₂O₃)
Sulfur oxide (SO₃)
Phosphurous oxide (P₂O₅)

VI - RESULTS OF ASSAYS:

The results of the first series of assays, assays for CaO and MgO, indicate the presence of alternating horizontal beds of Calcium Limestone and Dolomitic Limestone whose thickness vary from 10' to 30'.

The results obtained from the second series of assays, i.e. assays of the "limestone" composite of the first 20' of the three diamond drill holes, confirm the presence of Calcium Limestone but also indicate a relatively high percent of silica, an average of 8.6% SiO₂.

VII - INTERPRETATION OF THE DATA:

NORTARIO LIMESTONE LTD. is presently searching for economic "limestone" deposits amenable for the production of quicklime which would be destined mainly to the gold mining industry of northeastern Ontario and northwestern Québec.

Quicklime is produced by the calcination of "limestone" in rotary kilns. The chemical and physical specifications of quicklime varies according to its use. In the gold mining industry it is used in the flotation process as a "depressant" and as a pH control reagent. About 1.6 pounds of quicklime are required for each ton of ore milled.

Most operations would prefer quicklime containing 85% or more carbonate and silica in the range of 5%.

VIII - RESULTS OF ASSAYS - PHASE II:

All of the core obtained from diamond drill holes N-4-85 to N-8-85 was split and assayed in five foot sections for values of CaO, MgO and SiO₂. An average of 44% CaO, 4% MgO and 9% SiO₂ was obtained from the samples. These results are conformable to the assays obtained from diamond drill holes W-1-85, E-2-85 and N-3-85 from surface to a depth of 25'.

IX - ESTIMATION OF RESERVES:

The first phase of the diamond drill program indicated that the upper 25' of the limestone horizons were the ones containing the maximum percentage of CaO at shallow depths. The second phase of the diamond drill program was thus implemented to obtain information as to the horizontal continuity of these CALCIUM LIMESTONE beds.

The drill pattern infers the presence of CALCIUM LIMESTONE for an approximate length of 1,200', an approximate width of 500' for a depth of 20' thus representing approximately 12 million cubic feet of "limestone".

Assuming a weight in the range of 12 pounds per cubic feet, a total of one million tons of CALCIUM LIMESTONE, is inferred to be present from the two diamond drill programs and from the assays obtained.

X - CONCLUSIONS & RECOMMENDATIONS:

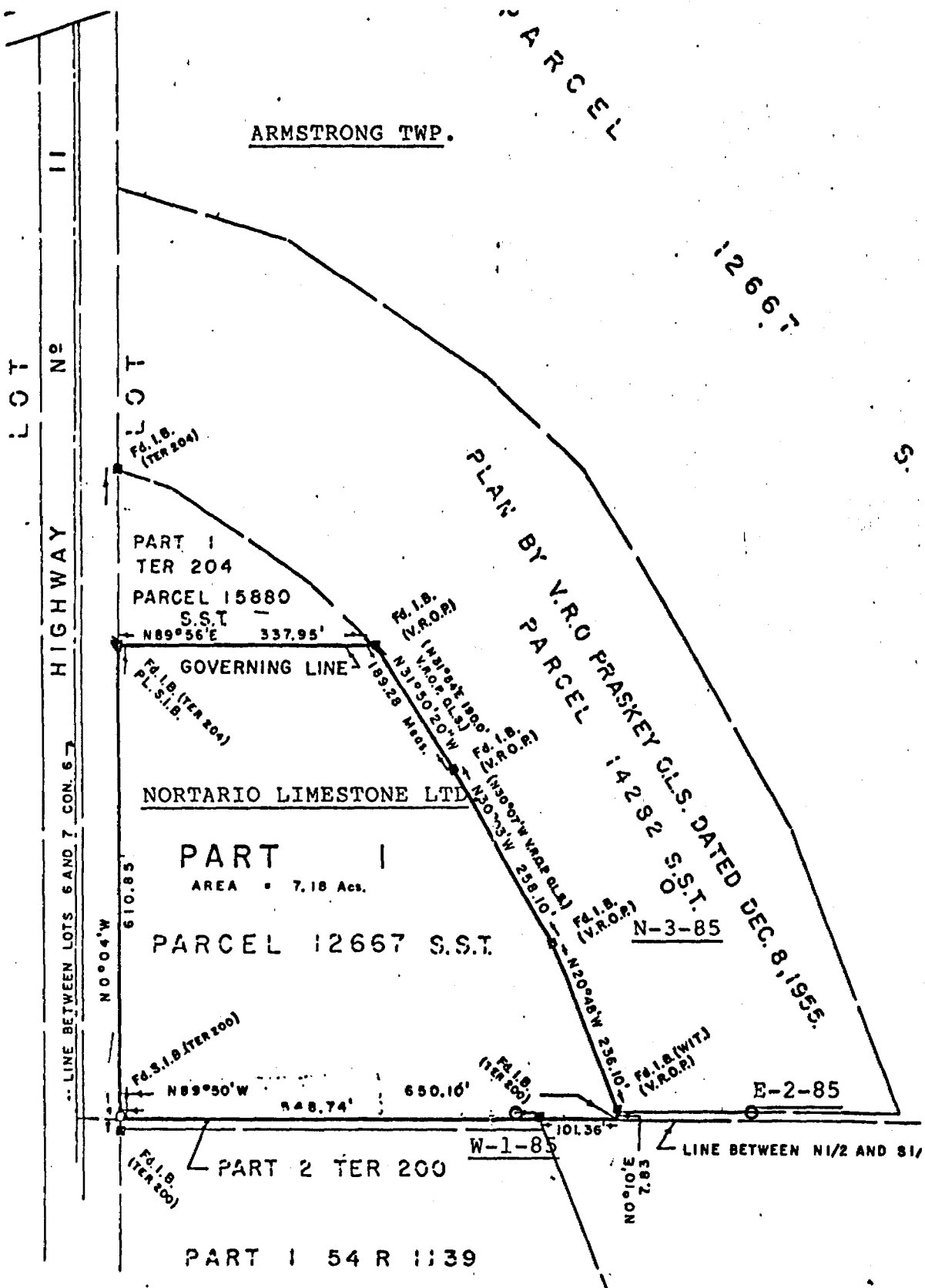
The most important aspect of quicklime is its % of available "lime" as CaO or MgO, as it is consumed in the milling process. Impurities such as silica (SiO) may also be important in determining the quality of quicklime. Metallurgical tests must be completed to evaluate properly the characteristics of any processed "limestone". It shall be possible, only then, to determine if the carbonate and silica contents of the "limestone" located on the Armstrong Twp. property of NORTARIO LIMESTONE LTD. is adaptable to the local mining industry.

Respectfully submitted:

E. Chartré, B.A., B.Sc.:



May 13, 1985.



ARMSTRONG TWP.

PARCEL

12667

LOT
HIGHWAY
N^o

PART 1
TER 204
PARCEL 15880
S.S.T.

GOVERNING LINE

NORTARIO LIMESTONE LTD

PART 1

AREA = 7.18 Acs.

PARCEL 12667 S.S.T.

PLAN BY V.R.O PRASKEY C.L.S. DATED DEC. 8, 1955.

LINE BETWEEN LOTS 6 AND 7 CON. 67

N0°04'W
610.85

N89°56'E 337.95'

E. I.B. (V.R.O.P.)
N31°50'20"W
183.25 Met.

E. I.B. (V.R.O.P.)
N30°55'W 258.10'
N20°48'W 236.10'

N-3-85

Fd. I.B. (TER 200)
N89°50'W
548.74'

650.10'

Fd. I.B. (TER 200)

Fd. I.B. (WIT) (V.R.O.P.)

E-2-85

PART 2 TER 200

W-1-85

LINE BETWEEN N1/2 AND S1/4

PART 1 54 R 1139

1" = 200'

Frontier Twp
Armstrong Twp

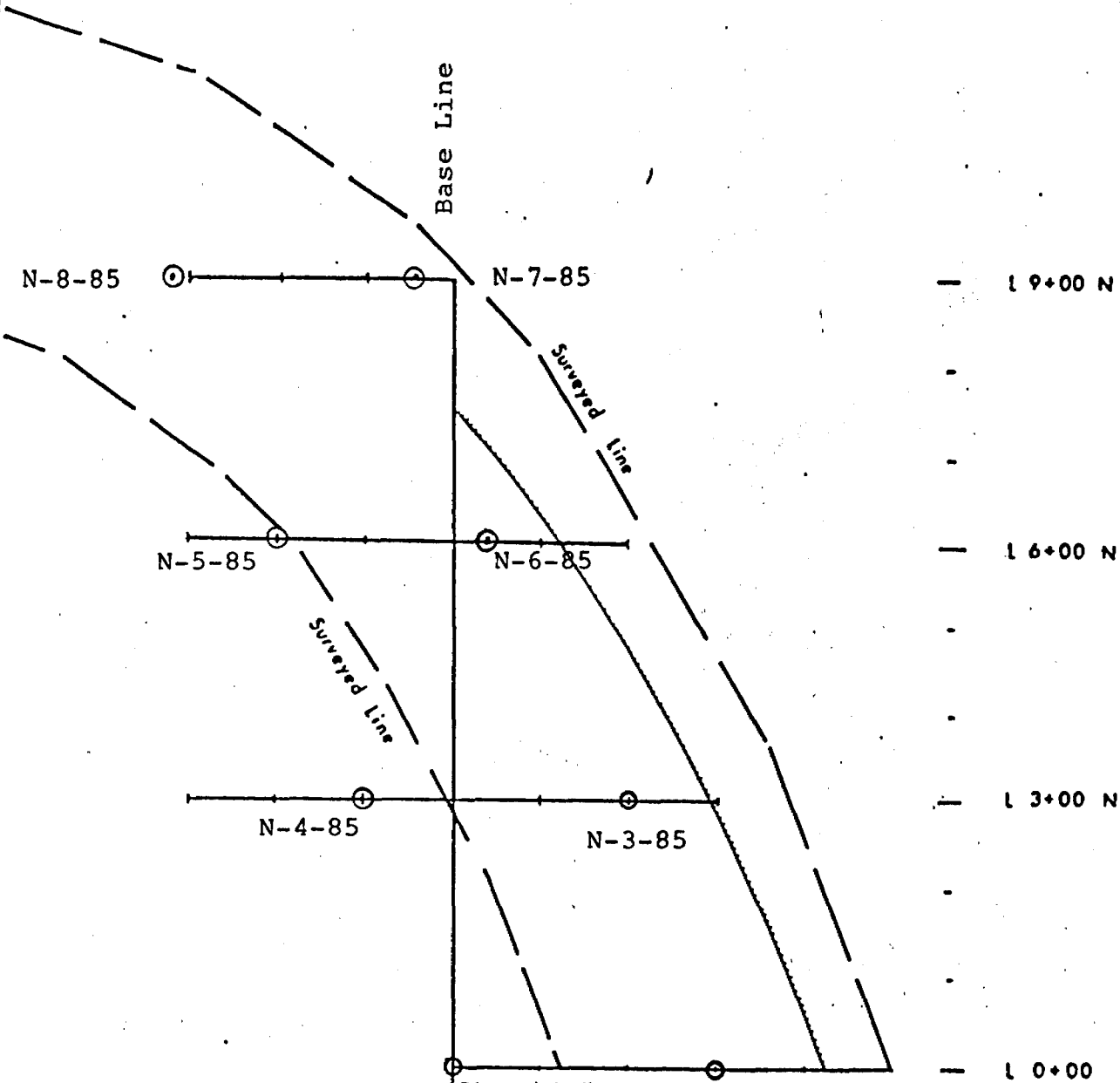


NORTARIO LIMESTONE LTD.

PLAN INDICATING DIAMOND DRILL HOLE LOCATIONS

HIGHWAY 11 NORTH

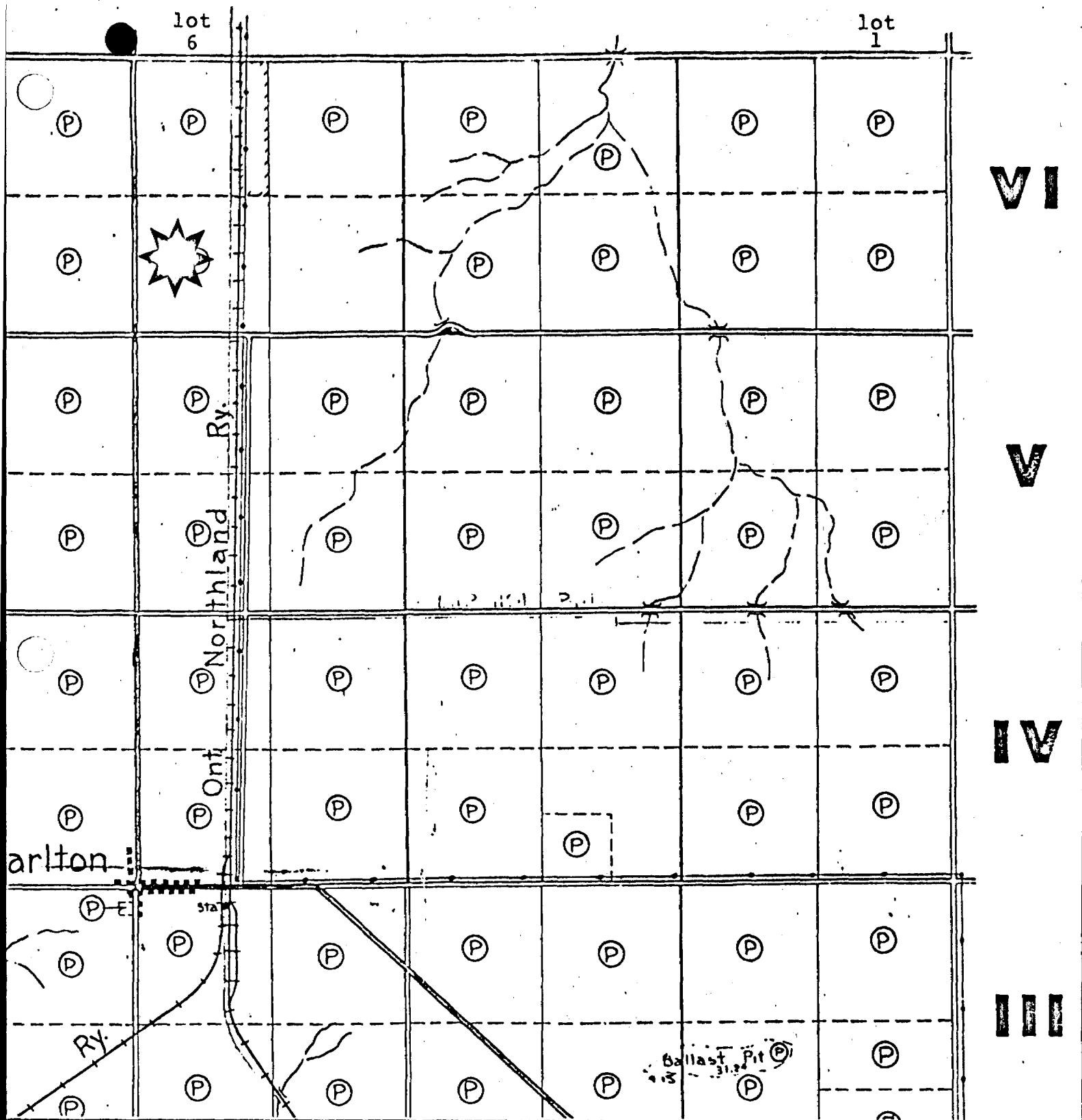
Base Line



BUILDINGS

Quarry

DATE November 1985 SCALE



NORTARIO LIMESTONE LTD.

PROPERTY LOCATION

1" = 1/2 mi.

APPENDIX "A"

DIAMOND DRILL RECORD & ASSAYS - PHASE 1

Footage From - To	Geological & Physical Description	Sample Number	From - To		
0' - 7.5'	OVERBURDEN				
7.5' - 24'	CALCIUM LIMESTONE (grey) Contains 85% nodular grey calcarenite fragments in calcisiltite matrix				
24' - 55-	DOLOMITIC LIMESTONE (beige) Thinly bedded calcisiltite of dolomitic composition, contains occ. fragments of grey calcarenite. 43'-46': numerous mud seams 47'-55': bedding becomes more massive, presence of small white fossils (10%)				
55'-- 80'	CALCIUM LIMESTONE (beige) 55'-60': mottled with grey sections of calcarenite 60-68': nodular, beige calcilutite with large nodules of grey chert (10%) 68'-80': nodular grey calcarenite				
80' - 90'	DOLOMITIC LIMESTONE (beige) Varies in color from beige to grey, nodular, fossiliferous				
90' - 100'	CALCIUM LIMESTONE (grey) Nodular calcarenite in silty matrix.				
100'	END OF HOLE W-1-85				
	E. Chartre:				

DIAMOND DRILL RECORD

Hole No. E-2-85

Page No. -1-

NORTARIO LIMESTONE LTD.

Footage From - To	Geological & Physical Description	Sample Number	From - To		
0 - 5'	OVERBURDEN				
5 - 20'	CALCIUM LIMESTONE (grey) Grey, mottled calcarenite fragments in calcisiltite matrix				
20' - 55'	DOLOMITIC LIMESTONE (beige) Thinly bedded calcisiltite of dolomitic composition, contains occ. fragments of calcarenite 48-53' occ. large fragments				
55' - 80'	CALCIUM LIMESTONE (grey-beige) Mostly grey calcarenite with occ. beige sections of bedded calcisiltite. @ 58' a 6" nodule of grey chert @ 63.5' @ 2" nodule " " 1' of lost core between 75 & 80'				
80' - 90'	DOLOMITIC LIMESTONE (beige) Thinly bedded massive, homogeneous calcisiltite				
90' - 100'	CALCIUM LIMESTONE (grey) Mottled, calcarenite fragments in calcarenite matrix				
100'	END OF HOLE E-2-85				
	E. Chartré: April 3, 1985				

ASSAY RESULTS

Hole number:

W-1

E-2

N-3

Footage

%

5 - 10"
 10 - 15'
 15 - 20'
 20 - 25'
 25 - 30'
 30 - 35'
 35 - 40'
 40 - 45'
 45 - 50'
 50 - 55'
 55 - 60'
 60 - 65'
 65 - 70'
 70 - 75'
 75 - 80'
 80 - 85'
 85 - 90'
 90 - 95'
 95 - 100'

	CaO	MgO	CaO	MgO	CaO	MgO
	44.07	2.92	44.68	2.22	48.45	2.02
	46.80	2.30	42.43	2.35	44.86	3.22
	42.73	4.08	44.54	2.74	45.33	3.68
	36.44	9.60	34.11	10.53	34.21	8.41
	26.12	10.61	49.83	1.62	49.55	1.11
	36.06	12.85	36.68	11.27	36.06	15.42
	31.01	17.49	29.94	10.98	30.04	17.99
	34.11	13.26	29.71	17.08	32.30	15.75
	36.06	14.21	33.31	14.46	37.43	12.38
	29.28	17.82	27.17	18.07	34.42	13.26
	45.44	4.97	42.95	6.05	47.35	4.97
	45.99	1.49	43.93	1.33	43.47	1.53
	44.38	0.83	41.85	0.98	46.35	0.65
	46.03	1.03	43.17	1.24	42.73	1.38
	43.03	5.12	36.38	8.39	34.72	11.61
	26.56	17.67	25.96	19.53	26.43	19.41
	26.56	16.02	31.40	11.95	35.02	7.61
	49.55	2.02	45.44	1.96	43.31	1.72
	44.87	3.00	43.17	3.61	43.33	3.13
Average for 19 samples	38.69	8.28	38.24	8.12	39.76	7.64

General average for 57 samples: CaO = 38.90%

MgO = 8.01%

APPENDIX "B"

DIAMOND DRILL RECORD & ASSAYS - PHASE 2

DIAMOND DRILL RECORD

Hole No.....

Page No. 1. of. 2.....

ONTARIO LIMESTONE LTD.

Footage From - To	Geological & Physical Description	Sample Number	From - To		
Hole No. N-	4-85				
0' - 7'	Overburden				
7' - 20'	CALCIUM LIMESTONE (grey)				
	Contains 85% nodular grey				
	calcarenite fragments in				
	calcisiltite matrix				
20' - 22'	DOLOMITIC LIMESTONE (beige)				
	mottled				
Hole No. N-	5-85				
0' - 7'	Overburden				
7' - 27'	CALCIUM LIMESTONE (grey-beige)				
	7'-10' grey				
	10'-19' beige with grey sections				
	19'-27' beige, thinly bedded				
	occ fossiliferous areas				
Hole No. N-	6-85				
0' - 2'	Overburden				
2' - 17	CALCIUM LIMESTONE (grey)				
	Mottled, fossiliferous				
17' - 20'	DOLOMITIC LIMESTONE (beige)				
	Thinly bedded with occ. fossil				
20' - 28'	CALCIUM LIMESTONE (grey)				



**ASSAYERS
LIMITED**

QUEBEC: 183 RUE GAMBLE O., C.P. 005 · ROUYN, J0X 2R8 · TEL. (819) 762-3010

ONTARIO: 20 VICTORIA STREET, SUITE 506 · TORONTO, M5C 2N8 · TEL. (416) 366-3100

CERTIFICATE OF ANALYSIS

FOR **Nortario Limestone Ltd.**

Copy: Mr. E. Chartre

LAB NO.	SAMPLE NO.	Hole No:	From	to	length	CaO %	MgO %	SiO ₂ %
17863	500	N-4-85	7'	10'	3'	47.67	2.28	9.66
4	1	N-4-85	10'	15'	5'	44.91	3.07	7.80
5	2	N-4-85	15'	20'	5'	41.33	2.97	15.25
6	503	N-4-85	20'	22'	2'	36.40	9.17	5.80
7	505	N-5-85	7'	10'	3'	45.43	2.27	10.00
8	6	N-5-85	10'	15'	5'	43.50	3.55	10.52
9	7	N-5-85	15'	20'	5'	41.26	4.95	13.01
17870	8	N-5-85	20'	25'	5'	49.73	4.20	4.95
1	9	N-5-85	25'	27'	2'	47.17	0.90	8.81
2	510	N-6-85	2'	5'	3'	45.33	2.97	7.45
3	1	N-6-85	5'	10'	5'	47.17	3.00	5.66
4	2	N-6-85	10'	15'	5'	41.27	4.05	13.64
5	3	N-6-85	15'	20'	5'	38.22	9.93	6.77
6	4	N-6-85	20'	25'	5'	48.38	1.03	6.95
7	5	N-6-85	25'	28'	3'	44.31	7.32	4.46
8	6	N-7-85	2'	5'	3'	48.17	1.87	7.11
9	7	N-7-85	5'	10'	5'	46.55	2.20	7.11
17880	8	N-7-85	10'	15'	5'	45.33	3.28	9.92
1	9	N-7-85	15'	20'	5'	43.90	4.42	8.28
382	520	N-7-85	20'	25'	5'	50.20	0.77	7.27

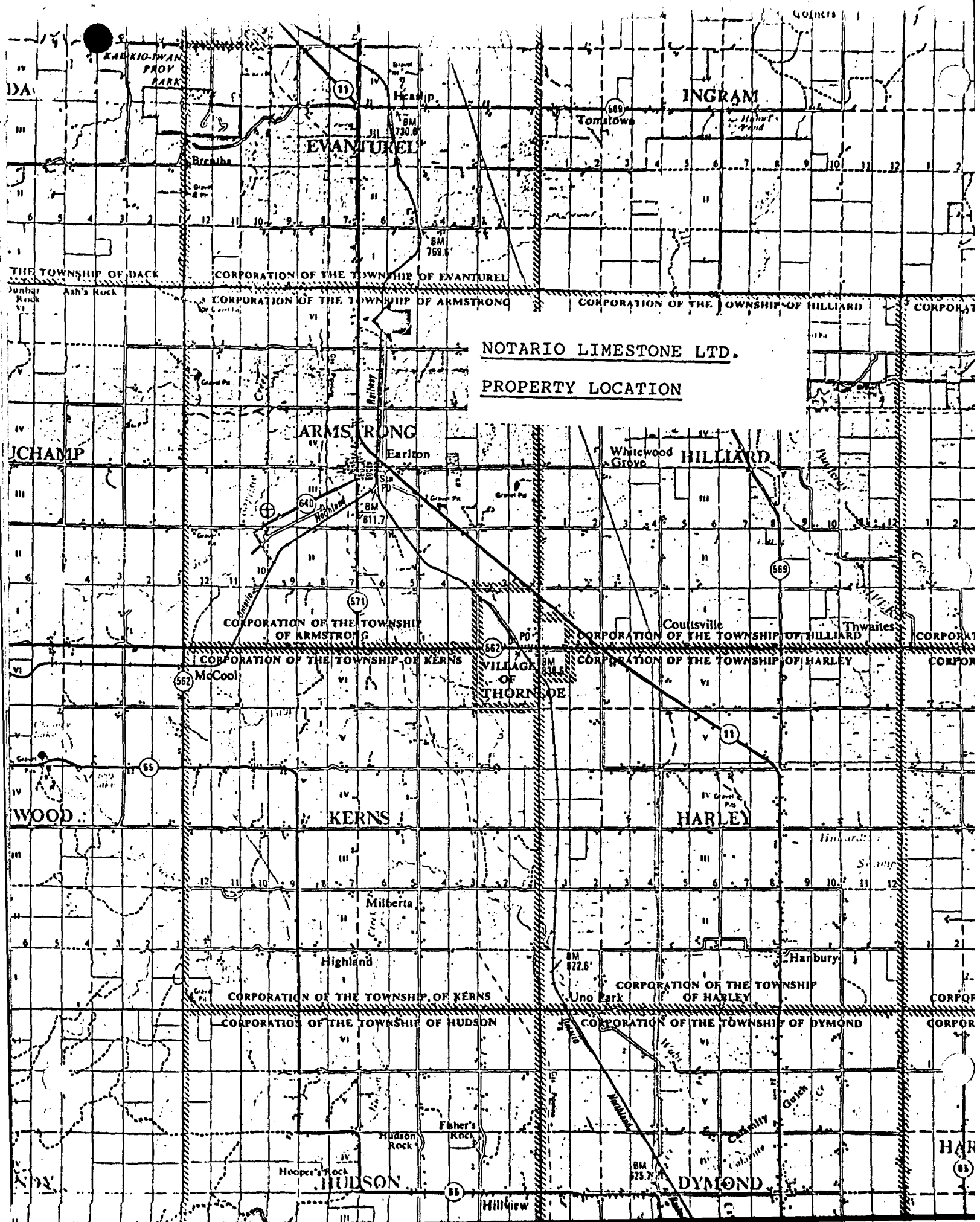
DATE **May 8, 1985**

CERTIFIED CORRECT

Qualitative

NORTARIO LIMESTONE LTD.AVERAGE ASSAYS FOR 8 DIAMOND DRILL HOLES - SECTIONS 5' TO 2

<u>HOLES NO.</u>	<u>CaO %</u>	<u>MgO %</u>	<u>SiO₂ %</u>
W - 1 85	44.22	4.14	8.32
E - 2-85	42.56	4.18	10.06
N - 3-85	44.70	4.07	7.45
N - 4-85	41.82	4.37	9.60
N - 5-85	44.98	3.74	9.62
N - 6-85	43.76	4.50	8.25
N - 7-85	46.49	2.66	8.14
N - 8-85	43.70	3.53	8.74
<hr/>			
Average	44.02	3.89	8.77



NOTARIO LIMESTONE LTD.
PROPERTY LOCATION

DA
KABKIO-WAN
PROV
BARR

EVANTUREL

INGRAM

THE TOWNSHIP OF DACK CORPORATION OF THE TOWNSHIP OF EVANTUREL
CORPORATION OF THE TOWNSHIP OF ARMSTRONG CORPORATION OF THE TOWNSHIP OF HILLIARD

CHAMP

ARMSTRONG

HILLIARD

CORPORATION OF THE TOWNSHIP OF ARMSTRONG CORPORATION OF THE TOWNSHIP OF HILLIARD
CORPORATION OF THE TOWNSHIP OF KERNS CORPORATION OF THE TOWNSHIP OF HARLEY

WOOD

KERNS

HARLEY

CORPORATION OF THE TOWNSHIP OF KERNS CORPORATION OF THE TOWNSHIP OF HARLEY
CORPORATION OF THE TOWNSHIP OF HUDSON CORPORATION OF THE TOWNSHIP OF DYMOND

HULSON

DYMOND

HAR