

Diamond Drilling



31M12SE0015 12 HARRIS

010

Township of HARRIS

Report No 12

Work performed by: Rayrock Mines

Claim No	Hole No	Footage	Date	Note
T 49415	1	352.0'	Oct/60	
	2	228.0'	Oct/60	
	3	233.0'	Nov/60	
	4	481.0'	Nov/60	
	5	304.0'	Nov/60	
	6	175.0'	Nov/60	
	7	448.0'	Nov/60	
	29	403.0'	Sept/61	
		<u>2624'</u>		

Notes:

Drill Hole Log

Dip Tests

At.....Ft.....
 At.....Ft.....
 At.....Ft.....
 At.....Ft.....
 At.....Ft.....
 At.....Ft.....

Property Benner-Harris
 At Cobalt
 Claim No.....
 Working Place Profile 16N
 Baseline Footage 145' East, 45' North
 Baseline Offset.....
 Date Started Oct. 24, 1960
 Date Completed Oct. 28, 1960

Hole Number 1
 Dip 60°
 Length Strike 318°
 Bearing Depth 352.0
 Elev. Collar.....
 Horiz. Trace.....
 Vert. Trace.....
 Date Logged.....

FROM	TO	DESCRIPTION	SAMPLE NUMBER	ASSAY
0	20.0	CASING		
20.0	299.0	COBALT SERIES SEDIMENTS		
		20.0 - 50.0 - Qtzite & Greywacke		
		50.5 - 81.0 Conglomerates, scattered pebbles, well altered,		
		At 120.6 - 1/4" Calc. cpy.		
		81.0 - 195.0 - Conglomerate - Numerous Pebbles.		
		195.0 - 266.0 " Scattered pebbles.		
		At 251.3 - Fract. with slicks, acute to core.		
		266.0 - 285.0 - Congl. Numerous pebbles.		
		285.0 - 299.0 - GREYWACKE		
		At 299.0 - 1" - Fract'd calc.		
299.0	352.0	LAMPORPHYRE		
		At 300.2 - 1/4" Calc.		
		At 302.5 - 1/8" Calc.		
		At 307.8 - 1/4" "		
		At 312.3 - 1/2" "		
		At 318.0 - Fract. Calc. on slip.		
		At 323.0 - 3/8" Calc. & Breccia.		
		At 324.0 - 1/4" " "		
		At 329.2 " " "		
		At 334.4 - " " "		
		At 344.5 " " "		
		345.5 - 350.0 - Highly Carbonated. Numerous calc. str.		
		352.0 END OF HOLE		
		END OF HOLE		

Logged by.....

Ralph I. Benner

Drill Hole Log

Dip Tests

At..... Ft.....
 At..... Ft.....
 At..... Ft.....
 At..... Ft.....
 At..... Ft.....
 At..... Ft.....

Property... Benner-Harris
 At..... Cobalt
 Claim No. Profile 13 North
 Working Place 60' East & 45' North
 Baseline Footage.....
 Baseline Offset.....
 Date Started Oct. 22, 1960
 Date Completed Nov. 2, 1960

Hole Number 2
 Dip..... 45°
 Length..... Strike 145°
 Bearing..... Depth 228.0
 Elev. Collar.....
 Horiz. Trace.....
 Vert. Trace.....
 Date Logged.....

FROM	TO	DESCRIPTION	SAMPLE NUMBER	ASSAY
0	19.0	CASING		
19.0	134.0	COBALT SERIES, CONGLOMERATES Fair Min. Pyr. & Cpy. (19-33) spotted alt.) At 49.5 Fract. acute to core, 1/4" calc. & qtz. At 54.8 - 1/4" qtz. on slip At 94.5 - 1/8" calc. At 93.0 - 1/4" MUD GOUGE ACUTE TO CORE At 99.6 - SEVERAL WHITE CALC. STRS. At 110.2 - 1/4" Qtz. & Calc. At 111.2 - 1/4" Qtz. & Calc. At 125.4 - 1/2" Qtz.		
134.0	228.0	KEEWATIN LAVAS At 134.2 - 1/2" Calc. At 136.5 - 1/2" WHITE CALC. CPY. At 143.5 - 1/2" Calc. ll core, Cpy, Pbs, ZnS. At 148.8 - 1/2" Calc. - cpy, pbs, ZnS, At 150.5 - 1/4" " " " " At 151.5 - " " " " " At 152.5 - 1/2" " " " " At 155.0 - SPLASH OF CALC., Cpy & ZnS. From 175.0 - 228.0 - Numerous Calc. Strs. 1/4 to 1/2" in width, Cpy & Pyr.		
	228.5	END OF HOLE		
		END OF HOLE		

Logged by.....

Ralph I. Benner

DIAMOND DRILL LOG

LOCATION PROVILLE 12 N.
 LAT. 41° EAST & 45° NORTH
 DEP.
 ELEV.

DIP 40°
 STRIKE 145°
 LOGGED BY RAULPH J. BENNETT

HOLE NO. 3
 HOLE STARTED NOV. 3, 1960
 HOLE FINISHED NOV. 5, 1960
 DEPTH 233.0

FOOTAGE	DESCRIPTION	SAMPLE NO.	CORE LENGTH FT.
0-15.0	CASING		
15.0-157.5	COBALT SERIES CONGLOMERATES MIN. PYR. SPERMATOPHYTES 23.0-25.0 - FRACT'D GREEN CARBONATE ON SLIPS 26.5-27.0 - " BROWN " " " 28.7-30.0 - " ACUTE TO CORE, PINK CARB. STRS. 31.5-33.5 - FRACT'D AT 30.3 - 1/8" PINK CALCITE 40.0-42.0 - FRACT'D GREEN CARB. ON SLIPS 70.0-73.0 - PITING AT 93.7 - CALC. STRINGER AT 106.0 - " " ACUTE TO CORE 122.0 - 122.8 - FRACT'D, GREEN CARB. ON SLIPS AT 126.5 - CALCITE ON SLIP 142.0 - 142.8 - FRACT'D, F.C.D. ON SLIPS		
157.5-233.0	KITE WATIN - 157.8-183.0 - NUMEROUS WHITE CALC. STRS. HEAVY IR WITH CALC. 157.8-158.2 - FRACT'D 188.0-200.0 - IRREGULAR CALC. STRS. CONTAINING CPY, PLS, Zn, PYRR. SAMPLE HEAVY MINERAL AT 197.5 735 0.2 3.4 216.0-233.0 - WELL IMP'D, 1/2 VEINS & CARBONATE THROUGH WITH PYR, PYRR.		
233.0	END OF HOLE		

BENNER - HARRIS

DIAMOND DRILL LOG

LOCATION PROFILE 12A
 LAT. 235° EAST
 DEP. _____
 ELEV. _____

DIP 50°
 STRIKE 318°
 LOGGED BY RALPH J. BENNER

HOLE NO. 4
 HOLE STARTED NOV. 7, 60
 HOLE FINISHED NOV. 12, 60
 DEPTH 481.0'

FOOTAGE	DESCRIPTION	SAMPLE NO.	CORE LENGTH FT.		
0-13.0	CASING		99		
13.0-361.0	COBALT SERIES SEDIMENTS		02		
13.0-80.0	GREYWACK, FAIR SPOTTED ALTERATION				
AT 52.0-54.5	BROKEN UP CORE				
AT 72.0	FRACT.				
80.0-250.0	CONGLOMERATE, SPOTTED ALTERATION TO 125.0'				CLOSE PEBBLES
85.0-87.0	FRACT. II CORE, COP. & Fe ON SLIPS				
AT 88.0	" " " " " "				
91.0-98.0	" " " GREEN CARBONATE AND PYRITE ON SLIPS				
AT 101.0	FRACT., COP ON SLIP				
250.0-270.0	CONGLOMERATE, SCATTERED PEBBLES				
AT 259.7	FRACT., 1/4" QTZ.				
AT 264.8	1/4" QTZ, COP				
AT 272.0 & 272.4	1/4" QTZ & COP				
270.0-322.5	GREYWACK, ODD PEBBLE				
319.2-320.0	FINE, IRREGULAR PINK & WHITE CHERT, SPARKLE IN CHERT AND DISSEMINATED IN WALL ROCK				
319.2-319.8	SAMPLE	734A	0.6	12	
320.0-320.5	GALINA DISSEMIN. IN ROCK				
322.5-361.0	CONGLOMERATES, CLOSE PEBBLES				
324.5-324.9	IRREGULAR PINK LIME SLIPS, COP & PH S.				
322.0-353.0	CORE, 1/4" II CORE				
361.0-388.0	KEEWATIN LAVA, BRECCIATED IRREGULAR CHAL. STRS, SCATTERED COP				
388.0-418.0	BANDED CHERT, HONEYCOMB, PYR. IN S.				
418.0-481.0	LAVA, SPLINTERS COP				
465.0-481.0	NUMEROUS IRREG CHAL. STRS				
481.0	END OF HOLE				

BENNETT - HARRIS
 PROFILE 16N

DIAMOND DRILL LOG

LOCATION 330E - 20 SOUTH

HOLE NO. 5

LAT. _____

DIP 45°

HOLE STARTED NOV. 18, 60

DEP. _____

STRIKE 140°

HOLE FINISHED NOV. 18, 60

ELEV. _____

LOGGED BY RALPH J. BENNETT DEPTH 304.0

FOOTAGE	DESCRIPTION	SAMPLE NO.	CORE LENGTH FT.	Ag CZ.
0-11.0	CASING			
11.0-187.0	COBBLE SERIES SEDIMENTS			
	11.0-37.5 - IMPURE QTZITES			
	37.5-107.0 - GAYWOCKE WELL ALTERED WELL FRACT., FO ON SLIPS			
	107.0-187.0 - CONGLOMERATE, WEAK ALTERATION WELL MINERALIZED WITH CPY.			
	AT 114.0 - FRACT.			
	AT 127.0 - " FO ON SLIPS			
	141.0-142.0 - " CALC. STRS. Zn S MIN. SAMPLE AT 141.5	731A	0.2	
	156.5-157.5 - WELL FRACT., SEVERAL CALCITE STRS.			
	174.0-175.0 - FRACTURE // CORE			
	178.0-179.5 - FRACT'D CALCITE STRS DISSEMINATED Pb S.			
	178.0-178.5 - SAMPLE	736A	0.5	
	181.0-183.0 - FRACT'D			
	AT 185.2 - 2" QTZ, CHL. & CPY			
	200.0-209.0 - BLACK KEEWATIN PYRRHOTITE MIN.			
	209.0-304.0 - GREY CARBONATE KEEWATIN WELL MIN. PYR.			
304.0	END OF HOLE			

Drill Hole Log

Dip Tests

At..... Ft.
 At..... Ft.
 At..... Ft.
 At..... Ft.
 At..... Ft.
 At..... Ft.

*14 9/15
 110 5/15*

Property Benner-Harris
 At Profile 18 N 500' E - 50' N
 Claim No.....
 Working Place.....
 Baseline Footage.....
 Baseline Offset.....
 Date Started Nov. 20/60
 Date Completed Nov. 22/60

Hole Number 6
 Dip 45°
 Length Depth 175.0'
 Bearing Strike Due North
 Elev. Collar.....
 Horiz. Trace.....
 Vert. Trace.....
 Date Logged.....

FROM	TO	DESCRIPTION	SAMPLE NUMBER	ASSAY
0	36.0	CASING		
36.0	175.0	COBALT SERIES SEDIMENTS		
		36.0 - 75.0 - Impure quartzites		
		At 59.0 - 1/8" white calcite		
		75 - 118.0 - Greywacke well altered		
		75.0 - 76.0 Well fractured		
		At 75.1 - 1/2" white calcite, FeO		
		118.0 - 175.0 Conglomerates, scattered pebbles altered to 140', scattered pyr. & opy.		
		132.0 - 132.5 - Fract'd, calc. on slips		
		143.2 - 143.8 " " "		
		At 152.0 - Streaky chloritic alteration.		
		At 153.0 Fract'd over 2" irreg. calcite str.		
		At 173.0 - Several calcite str. over a 2" width.		
175.0		END OF HOLE		
		END OF HOLE		

Logged by Ralph I. Benner
 Ralph I. Benner

Drill Hole Log

7

Dip Tests

At Ft. *144 ft's*
 At Ft. *Harris*
 At Ft.
 At Ft.
 At Ft.
 At Ft.

Property: **Benner - Harris** Hole Number
 At: **Profile 18N 500' East, 50' South** 50°
 Claim No. Length: **Depth 448'**
 Working Place. Bearing: **Strike Due North**
 Baseline Footage. Elev. Collar.
 Baseline Offset. Horiz. Trace.
 Date Started: **Nov. 22, 1960** Vert. Trace.
 Date Completed: **Nov. 27, 1960** Date Logged.

FROM	TO	DESCRIPTION	SAMPLE NUMBER	ASSAY
0	4.0	CASING		
4.0	355.0	COBALT SERIES SEDIMENTS		
		4.0 - 75.0 Alternating beds, Qtzite, gray, & Cgl.		
		At 9.5' - 1/2" pink calcite, FeO & Cpy (vuggy)		
		At 17.5 - 1/4" white calc., FeO & Cpy.		
		At 37.0 - Several white calc., Strs. FeO.		
		42.0 - 42.5 - Fract'd 1/8" white calc.		
		75.0 - 140.0 - Greywacke		
		At 78.5 - Fract, irregular calc, strs, chlorite.		
		90.5 - 91.0 - Fract'd.		
		140.0 - 315.0 Conglomerate scattered pebbles.		
		156.0 - 157.0 Irregular calc., strs, splashes cpy.		
		175 - 177.5 - Fine Calc. strs, throughout, cpy.		
		226.5 - 226.9 - Cgl, calc, strs, cpy.		
		SAMPLE NO. 739A 0.4' Oz. Ag. - 0.4		
		236.0 - 236.4 - Fract'd.		
		At 263.5 - 1/4" white calc.		
		312.2 - 312.8 - Fract'd.		
		315.0 - 355.0 - CONGLOMERATE DENSE PEBBLES.		
		At 347.5 - Disse, cpy, ZnS & PbS.		
355.0	448	LEEWATIN		
		355.0 - 405.0 - Very soft, carbonated, numerous calc., strs.		
		END OF HOLE		

Company RAYROCK MINES LTD

WARRANT

Drill Hole Log

29

Dip Tests

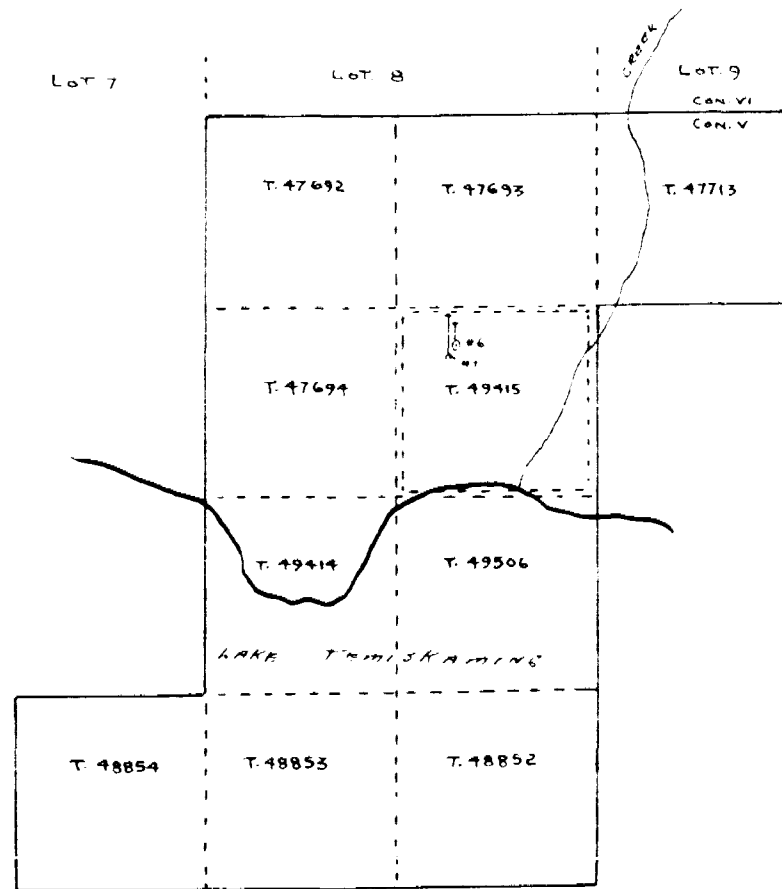
At Ft.
 At Ft.
 At Ft.
 At Ft.
 At Ft.
 At Ft.

Property BANNER - HARRIS
 At HARRIS TOWNSHIP
 Claim No. 11015
 Working Place LOCATION
 Baseline 1600 - 2005
 Baseline Offset.....
 Date Started SEPT. 24, 1961
 Date Completed SEPT. 30, 1961

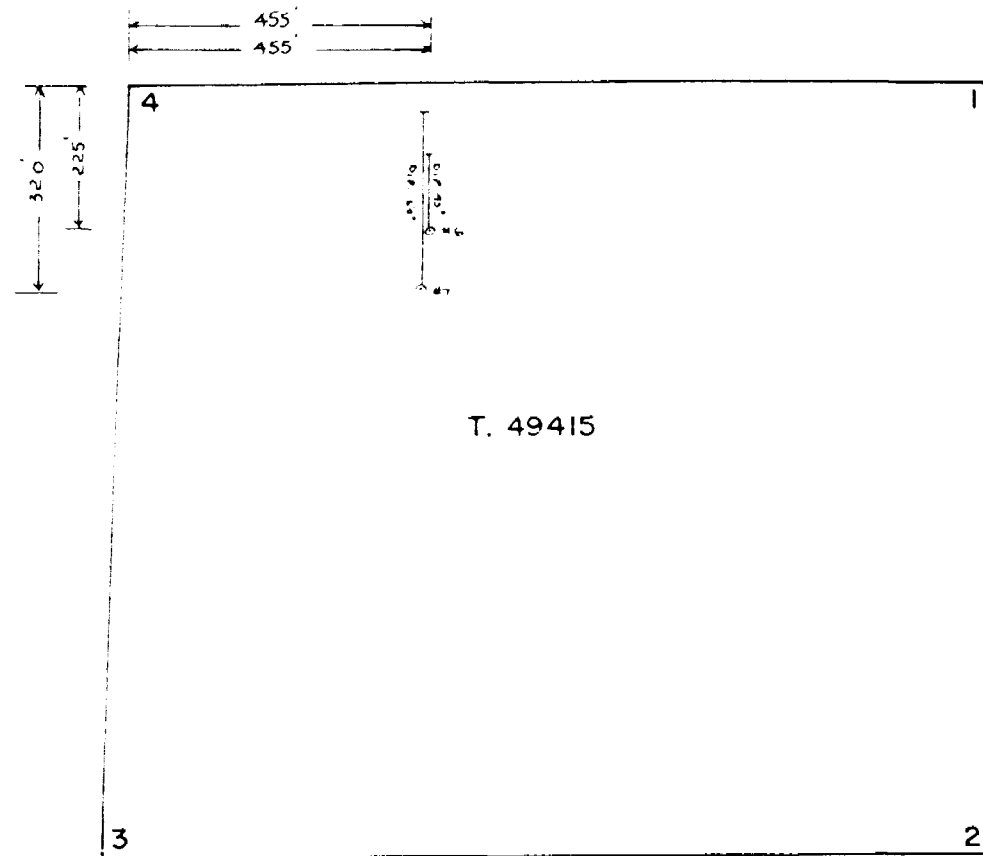
Hole Number.....
 Dip 30°
 Length 403.0
 Az. 92°
 Bearing 126°
 Elev. Collar.....
 Horiz. Trace.....
 Vert. Trace.....
 Date Logged.....

FROM	TO	DESCRIPTION	SAMPLE NUMBER	ASSAY
0	81.0	CASING		
81.0	353.5	COBALT SERIES SEDIMENTS, MIN. COP.		
		810-1570 - CHEYNAQUE, SPARSE PERKLES CHLORITIC SPOTTING VERY WELL MARKED. SMALL FRACTS, CIRCULAR ON SLIPS MOST FRACTURES ACUTE TO CORE		
		1570-353.5 - LOGGERS MADE NEW ALT. COP. MIN.		
		AT 197.6 - FRACT SLICKS		
		" 199.0 - " "		
		206.6 - 209.0 - " (IN ON SLIPS)		
		210.0 - 210.6 - " COP. "		
		221.0 - 222.0 - FRACTURED FRACTURES, IRREG. CALC. FILLING.		
		318.5 - 318.0 - QUARTZITIC, COU DEBBLE		
		318.5 - 318.5 - CALC & COBALT VEIN OPTIC $3/4$ " AT VERY ACUTE ANGLE TO CORE		
		AT 316.5 - 2" CALC & COBALT SAMPLE	477	2.0
		" 317.5 - " " " "	478	2.8
		" 327.5 - 1/4" CALC		
		336.0 - 340.0 IRREG. CALC STRS.		
		AT 338.0 - IRREG. STREAKS COBALT		
		" 344.3 - FRACT		
		344.3 - 347.0 - IRREG. CALCITE, SLICKS, POSSIBLE FRACT		
		AT 352.1 - 3/8" CALC. & BRECCIA		
		352.1 - 353.5 - FRACT D.		
		END OF HOLE		

Logged by.....



SCALE · 1" = 1320'

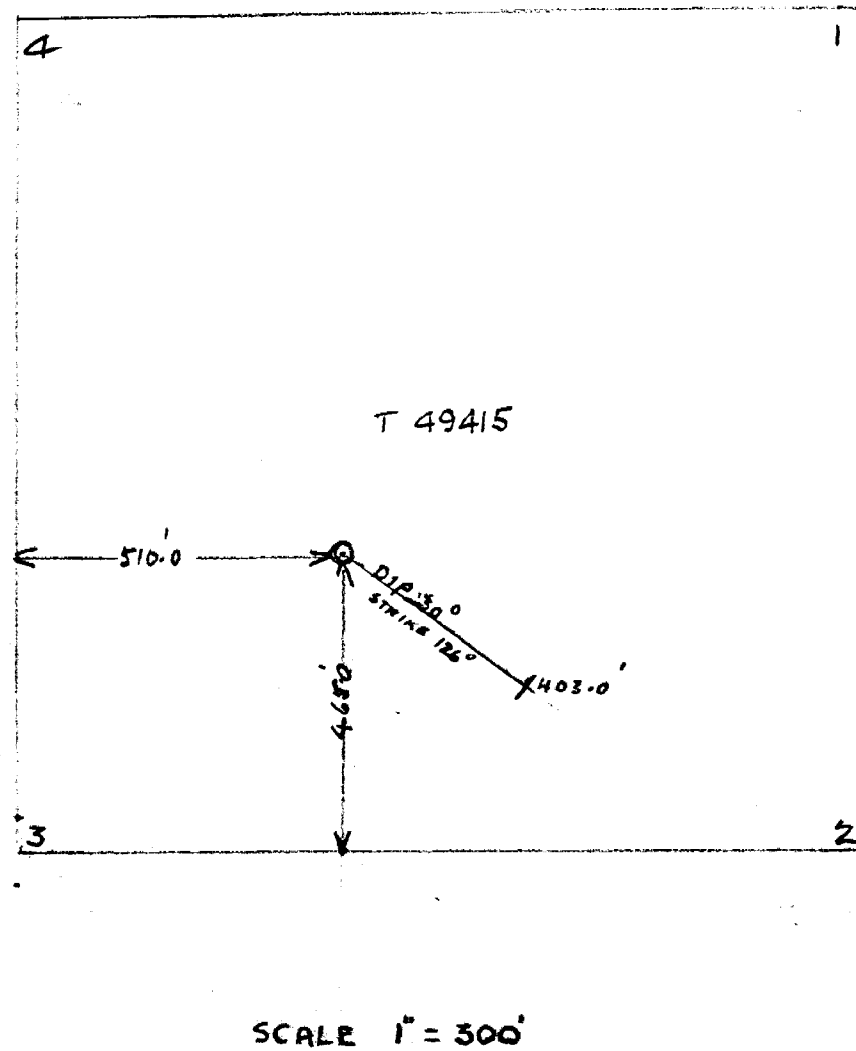
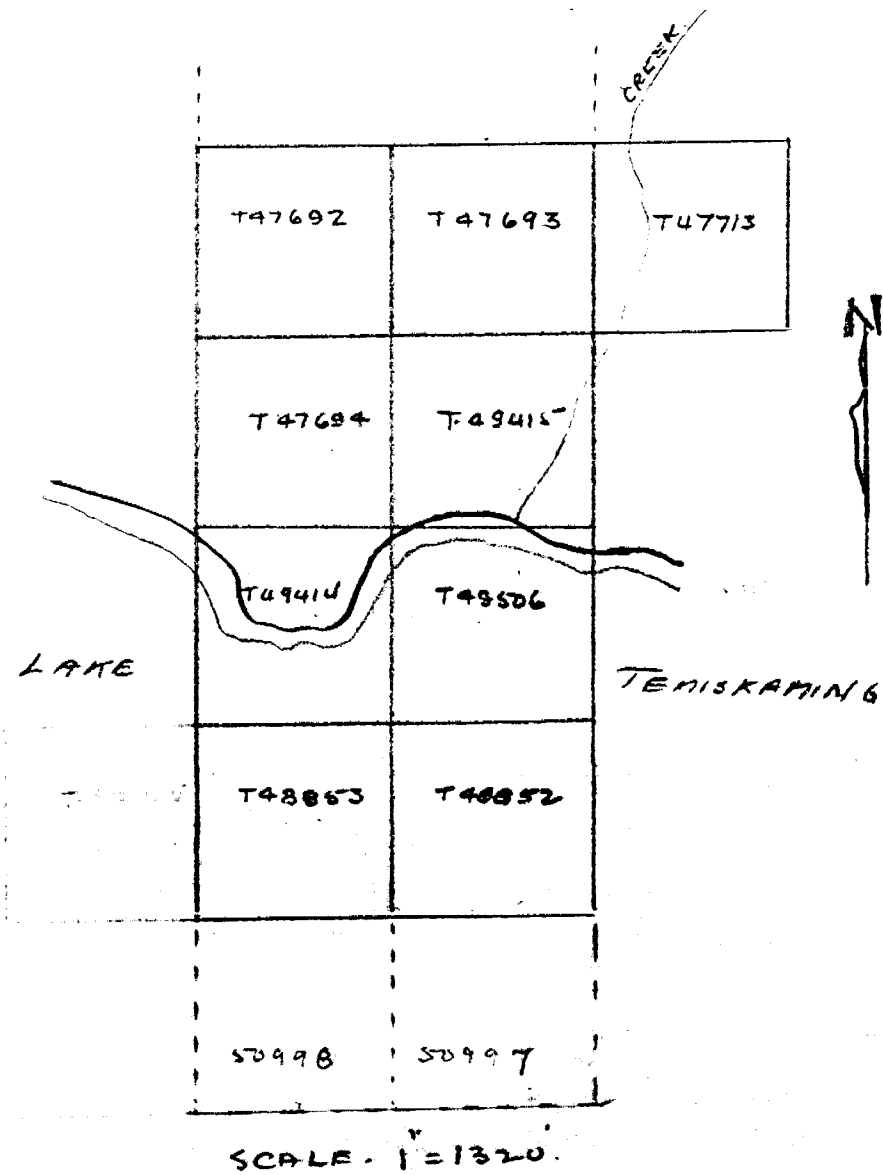


SCALE · 1" = 300'

SKETCH SHOWING ASSESSMENT DRILL HOLE LOCATIONS

RAYROCK MINES PROPERTY

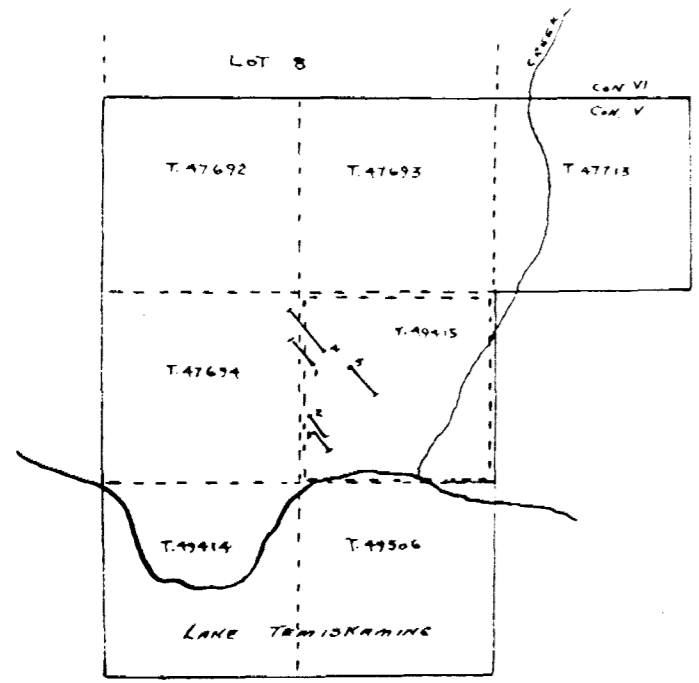
HARRIS TOWNSHIP



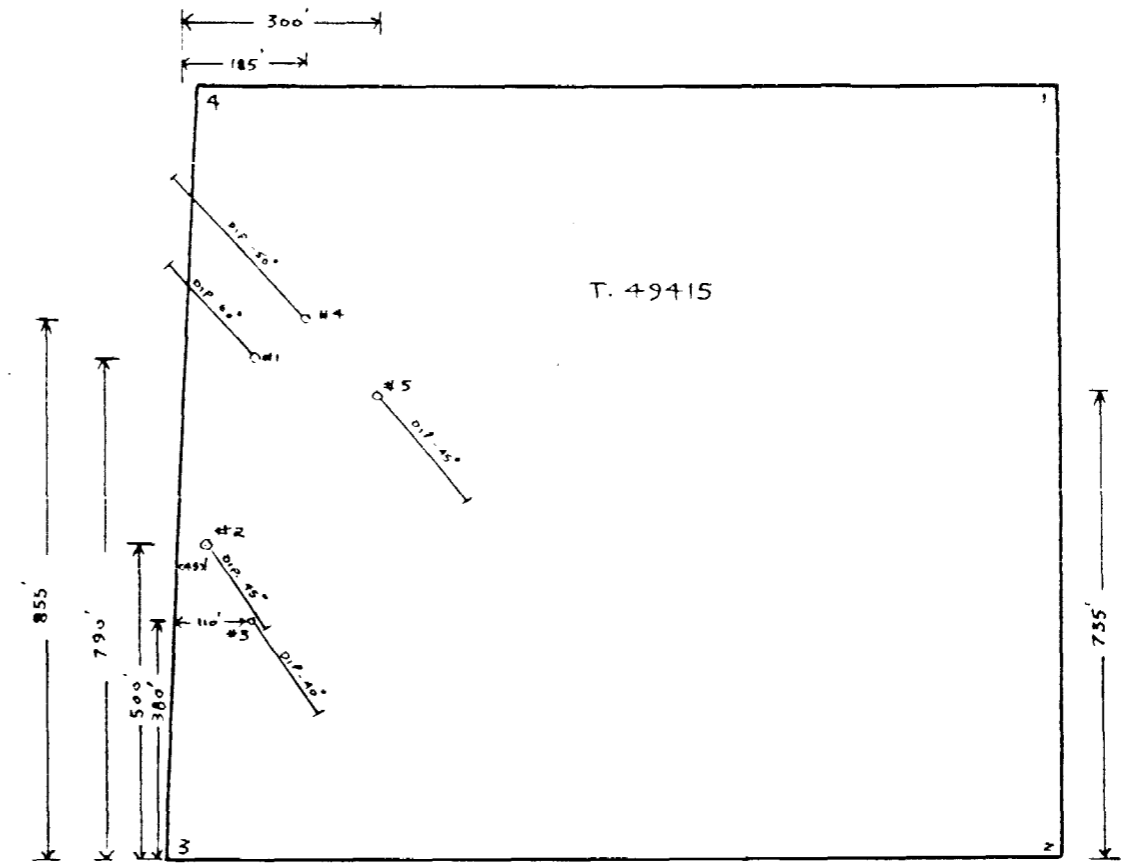
SKETCH SHOWING ASSESSMENT DRILL HOLE LOCATIONS

RE: CLAIMS T 50998

HARRIS TOWNSHIP



SCALE · 1" = 1320'



SCALE · 1" = 300'

SKETCH SHOWING ASSESSMENT DRILL HOLE LOCATIONS

MID NORTH ENGINEERING SERVICES PROPERTY

HARRIS TOWNSHIP