

31M12SW0004 2.9171 LUNDY

010

SILVERSIDE RESOURCES INC.

GEOPHYSICAL SURVEY

LUNDY CLAIM GROUP

LUNDY TOWNSHIP

**RECEIVED**

JUN 9 1986

**MINING LANDS SECTION**



31M12SW0004 2.9171 LUNDY

010C

INDEX

SUMMARY

LOCATION AND ACCESS

PROPERTY DESCRIPTION

PREVIOUS WORK

THE 1985 GEOPHYSICS PROGRAMME

INTERPRETIVE CONCLUSIONS

RECOMMENDATIONS

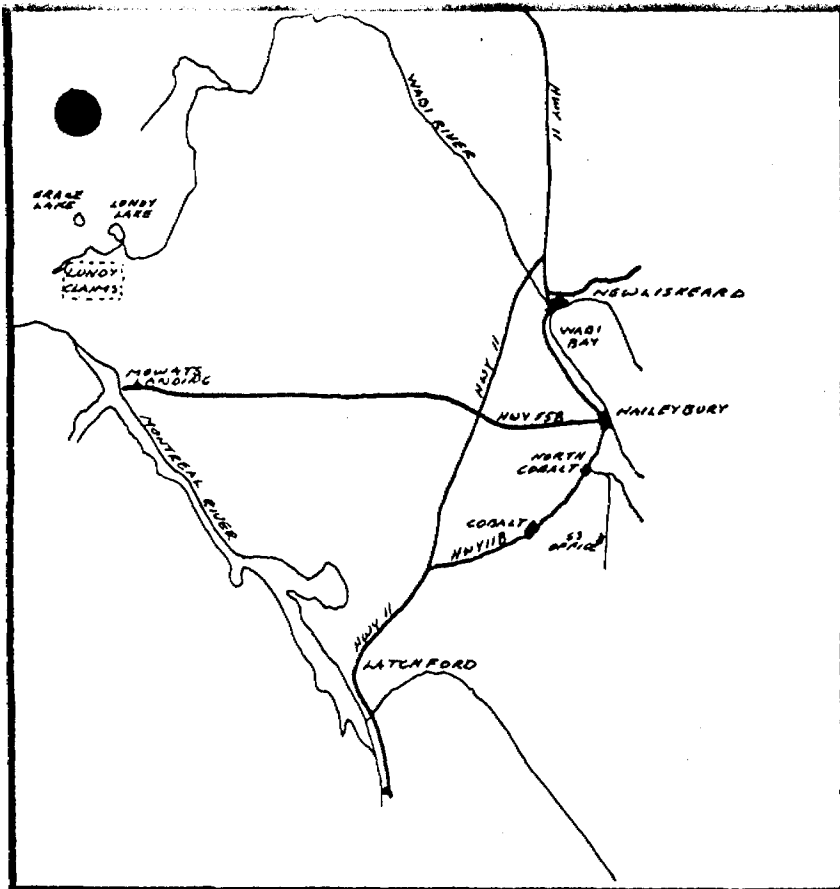
## Summary

From February 1, 1986 to February 14, 1986 about 79 miles of line were cut over Silverside Resources Inc.'s Lundy Township Property. A V.L.F.-E.M., and gradiometer survey was conducted. The geophysical survey continued until February 26, 1986 and the plotting and interpretation of data carried through to the end of the month. Line cutting was done by Native Exploration Services of Chibougamou P.Q. and geophysics by Mertons and MacNeil Geophysics of Guelph Ontario. V.L.F.-E.M., frazer filtered V.L.F.-E.M. and total field magnetometer plots were computer plotted from the data. About 8375 stations were done in all.

Interpretation showed that geological contacts were better defined by the survey. What is interpreted as at least one large north easterly trending fault showed up in the plotted data. A series of minor conductors showed up in the vicinity of the veins discovered during the 1985 diamond drilling. These would make excellent targets for later exploration.

## Location and Access

The 46 claims in Lundy Township, District of Timiskaming, Ontario held by Silverside Resources Inc. are located close to the Montreal River just north of Mowats Landing. Access may best be achieved from highway 11 via highway 558 west to Mowat Landing and north via the Montreal River. (see location map 1).



SILVERSIDE RESOURCES INC.  
GEOPHYSICAL SURVEY  
LUNDY CLAIM GROUP  
LUNDY TWP.

George W. Hill

CON II

AULD TWP. CON I

854309	854310	854311	854312	854313	854278	
854308	854307	854306	854305	854304	854277	
854299	854300	854301	854302	854303	854276	
854298	854297	854296	854295	854294	85429	
854284	789143	789144	789145	791316	854274	
854283	789142	767002	767003	789141	891319	
PATENTED CLAIM		767001	767004	789140	854279	854280
		767005	767006	789139	854282	854281

LOT 12

11

10

9

BARR TWP.

SILVERSIDE RESOURCES INC.  
 LUNDY PROJECT, MAP 2  
 CLAIM GROUP - LUNDY TWP.  
 DISTRICT OF TEMISKAMING  
 SCALE 1"=1320', MAY 16/86

*Henry W. Auld*

## Property Description

The Lundy Township property is comprised of 46 unpatented claims. Silverside Resources Inc. does not own the surface rights to any of the claims. A complete list of claims is shown on map 2.

Tree cover consists mainly of poplar and birch although some spruce may be found on the areas of high ground. Overburden cover varies from extremely light on the ridges to over 100 feet in the swampy areas and consists of clay till to boulder till.

## Previous Work

During the summer of 1985 a two-fold programme was carried out over the Lundy Township Property. The first part of the project involved the mapping of the original 13 claims of the group for geologic contacts and structural features. Special attention was paid to calcite and calcite-quartz veins as well as associated mineralization.

The second part of the programme involved the diamond drilling of an area of interest.

## The 1986 Geophysics Programme

The 1986 geophysics programme, which was carried out during the month of February, involved the cutting of about 79 miles of line and a magnetometer and V.L.F.-E.M. survey. The line cutting was done by Native Explorations Services of Chibougamou P.Q.. Mertons and MacNeil Geophysics of Guelph, Ontario took readings every fifty feet on the cut lines totalling some 8375 stations to complete the geophysics survey. A ~~Contrex~~ <sup>Sintrex</sup> I.G.S. (2) unit which reads both V.L.F.-E.M. and magnetometer-gradometer conductors <sup>and MT3 Record Base Station</sup> were used for the purpose. A set of computer plotted maps was then drawn up and interpreted with reference to known geological data. The ~~Cutter~~ <sup>Cutter</sup> Maine station was used to do V.L.F.-E.M. and the setting for the ~~machine~~ <sup>Fraze Filtered Data</sup> was level 1.

## Interpretive Conclusions

Interpretation of the trend from negative to positive values and supportive research of existing information yielded confirmation of the location of contacts between rock units as well as the more tenuous locations of the transitional contacts of layers in the intrusive "Nipissing" diabase sill. Comparison of the contoured geophysics data with the confirmed and interpreted geological data gathered during the 1985 survey confirms this interpretation (see map 4 "geology composite").

Both V.L.F.-E.M. and total field magnetometer contoured data strongly suggest that the dip of the diabase intrusion (see map 3 right half and V.L.F. data plot) is to the west. Factors which lend credence to this conclusion are the sharp peaks in both the in phase and out of <sup>phase</sup> ~~pahse~~ plotted values of the V.L.F. survey. The consistently close contour <sup>gradients</sup> ~~gradunits~~ of the total field magnetometer plot supports this conclusion.

Ministry of Natural Resources geological map No.P-2733 also shows this trend from geological evidence as does the surface map compiled from the 1985 geological survey by Silverside Resources Inc..

Areas of swamp mask in part the values and limit conclusive separation between the diabase subunits. This factor results in a less well defined although discernable conductive axial trend. Topographic anomalies were also recognized by comparing contour data to topographic maps and air photographs of the area.

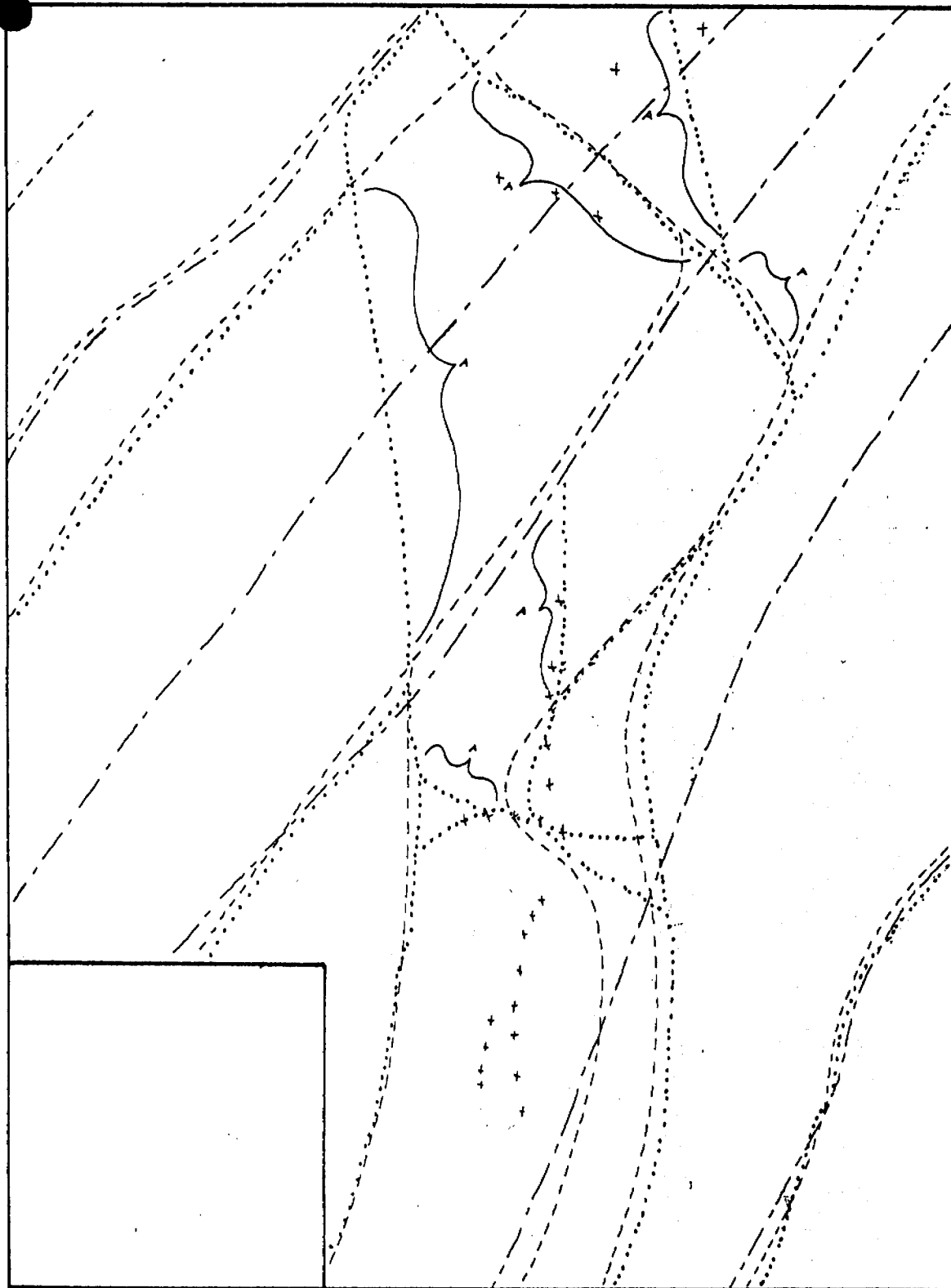
Using the area of the 1985 diamond drilling as a guide, the presence of an anomalous trend independent of geological contact was recognized. The intersections of both geologic units and subunits as well as mineralized vein intersections from the 1985 drilling records were <sup>compared</sup> ~~compared~~ to the geophysical data.

An anomalous trend appears to be striking N 15°E. For the location of this area refer to map 3. It is interesting to note that pits excavated in the early 1900's correspond to the location of the strike of the anomaly. These workings yielded anomalous gold and silver values during the 1985 diamond drilling.

Recommendations:

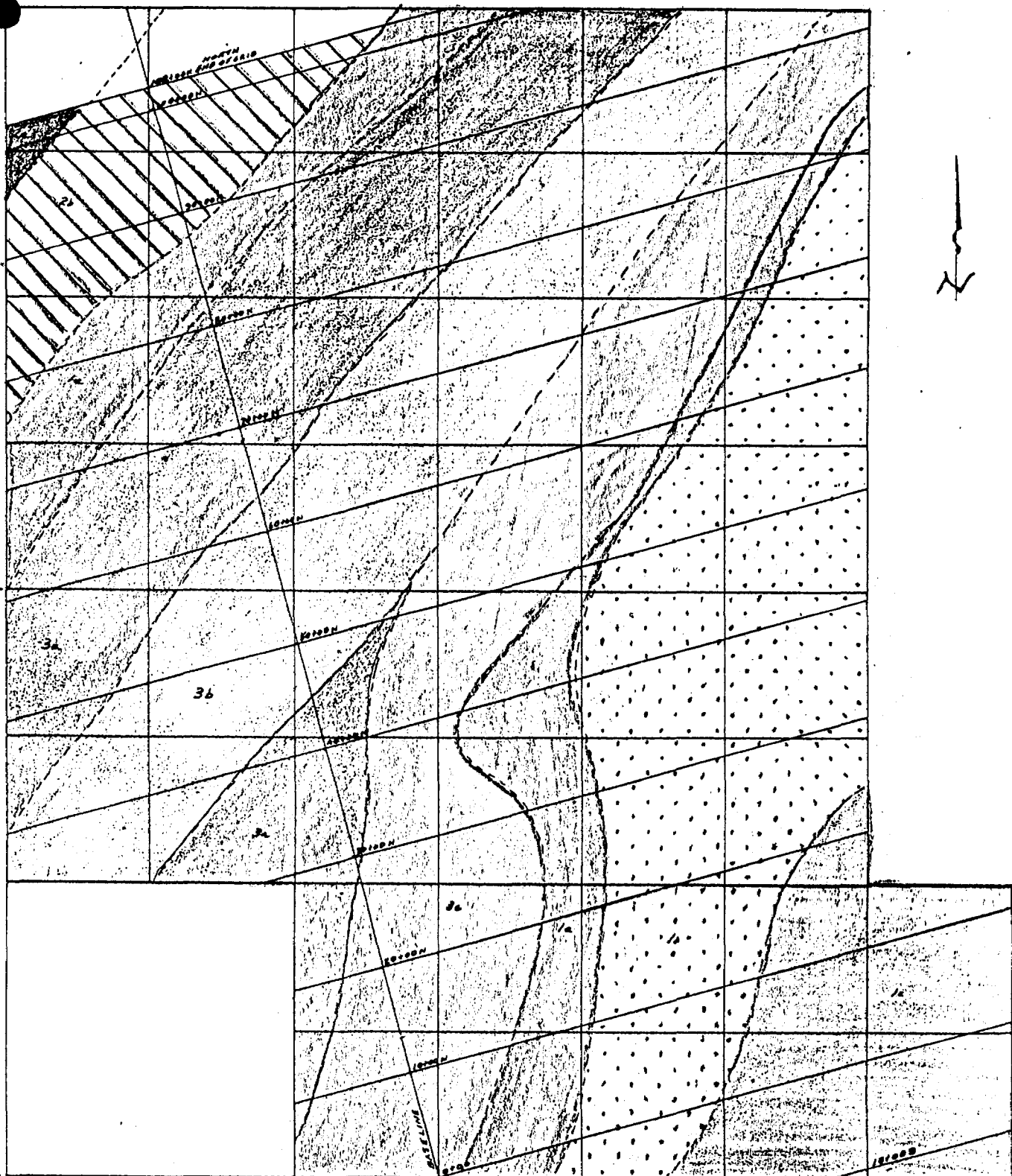
- 1) <sup>Detailed</sup> ~~Detail~~ mapping and sampling of areas along the anomalous trend.
- 2) A small detailed geophysical survey using Turam or shoot back methods.
- 3) If the results of the above methods yield positive results, a small diamond drill programme consisting of a screen of holes across the anomaly.





——— AXES OF CONDUCTOR  
 - - - - - TOTAL FIELD MAGNETOMETER  
 ······ VLF  
 - · - · - · FRASER FILTERED VLF  
 } A TOPOGRAPHICAL ANOMALY  
 x INDEPENDENT ANOMALOUS VALUE

MAP 3  
 George W. Hill



- |                           |   |  |
|---------------------------|---|--|
| NIPISSING DIABASE         | SEDIMENTS<br>COARST GROUP<br>QUARTZOSE<br>ARGILLITE | SEDIMENTS<br>FINEST GRAIN<br>GAY-SRY-RED.<br>SILTSTONE ARGILLITE |
| 36 HYPERSTHENE<br>DIABASE | 26 MARBON-LGN<br>ARGILLITE                          | 76 BLACK-GREY<br>ARGILLITE                                       |
| 34 QUARTZ<br>DIABASE      | 74 MARBOL SILTSTONE<br>ARGILLITE                    |  |

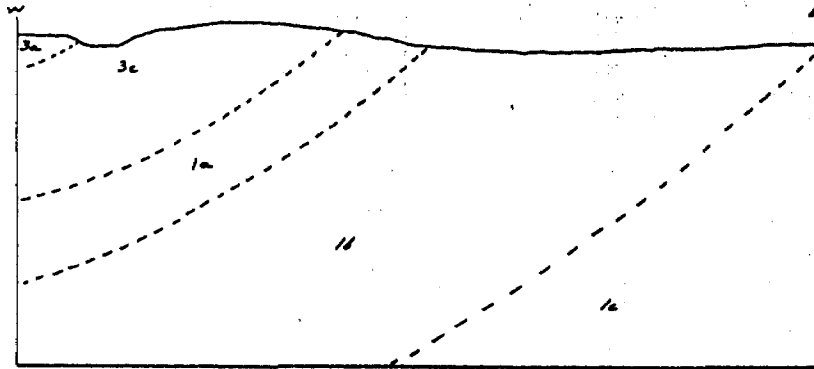
**MAP 4**

NOTE: CLAIM LINES AND GRID LINES,  
GRID LINES WERE CUT EVERY 200', ON MAP ONLY  
EVERY 1000' ARE PLOTTED.

*J. S. W. Hill*

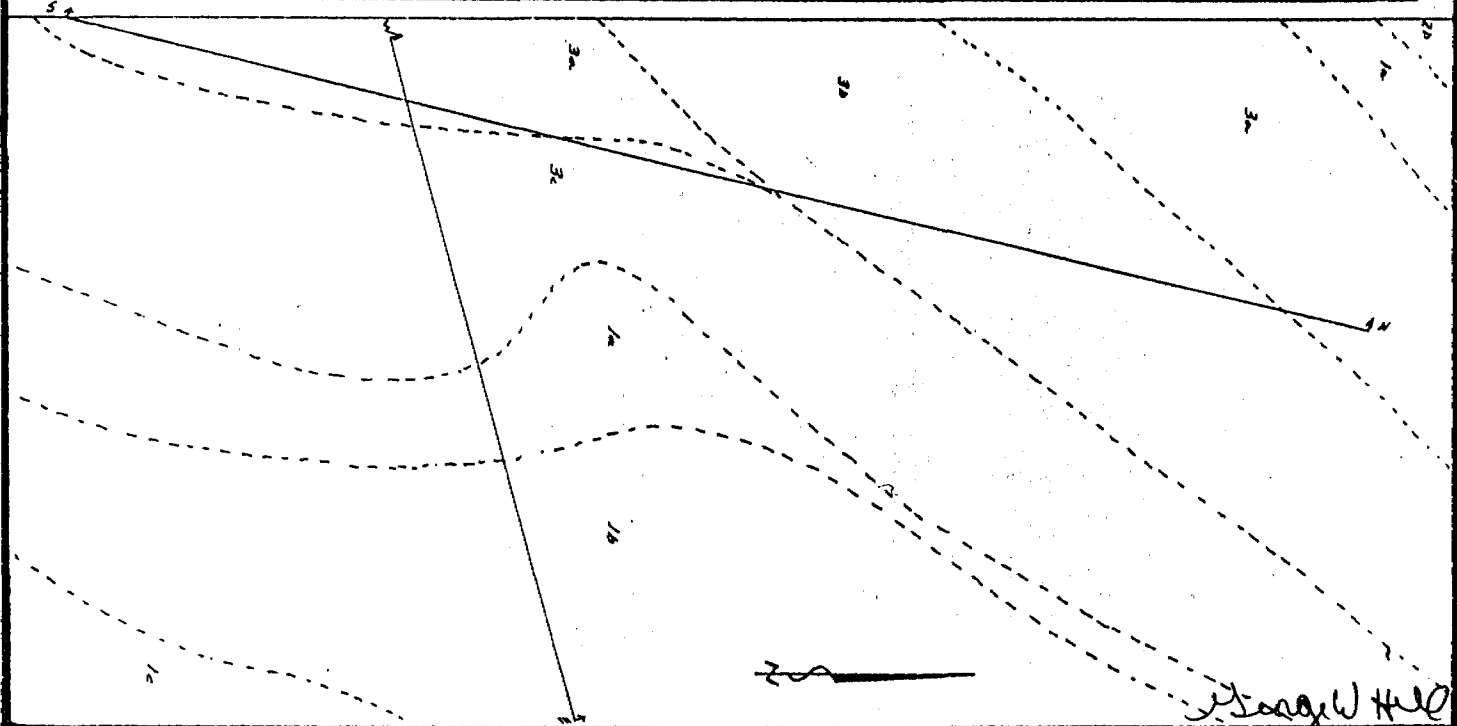
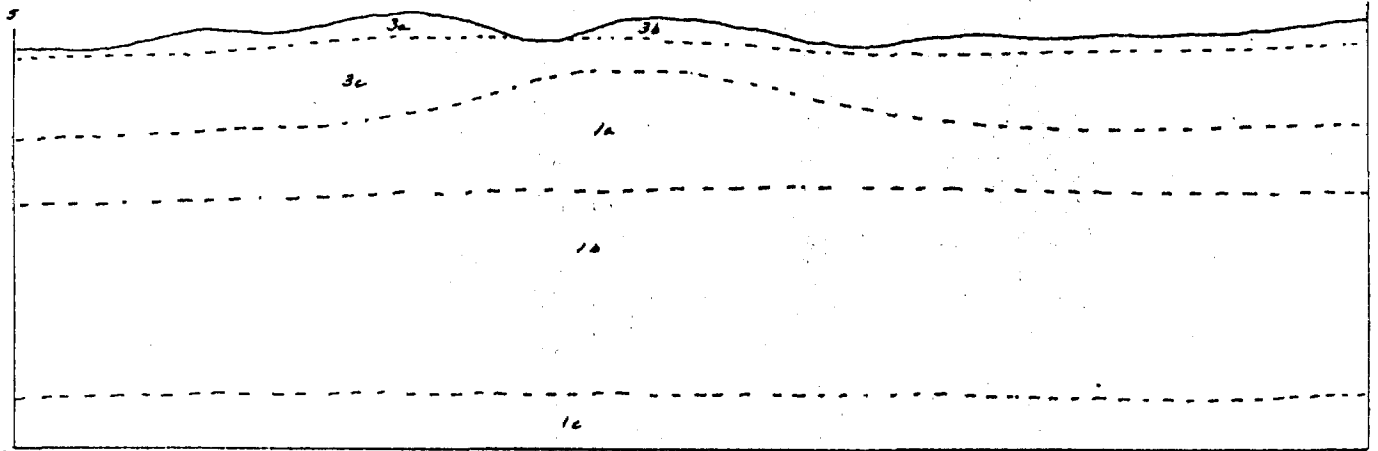
OBSERVER LOOKING  
N 15° W  
CROSS SECTION ON  
2500 N LINE

MAP 5



- 3a MASSIVE DIABASE  
VARIED, TEXTURED
- 3b HYPERSTHENE
- 3c QUARTZ
- 2a SEDIMENTARY ROCK  
COBALT GROUP  
QUARTZOSE  
ARENITE
- 2b MAROON AND GREEN  
ARGILLITE
- 1a FIRST BROOK  
GREEN-BRY - RED  
SILTSTONE ARGILLITE
- 1b BLACK GRAY  
ARGILLITE
- 1c MAROON SILTSTONE  
ARGILLITE

OBSERVER LOOKING  
WEST  
CROSS SECTION  
ALONG ANOMALOUS  
TREND



*J. J. H. H. H.*

CERTIFICATE

I, George W. R. Hill, of 491 Russell Street, Haileybury, Ontario, hereby certify that:

1. I am and have been employed since 1983 as a geologist with Silverside Resources Inc. with Head Offices at Suite 1101, 10 King Street East, Toronto, Ontario M5C 1C3.
2. I am a graduate of Queen's University, Kingston, Ontario, with a Bachelor of Science (1982) degree in Geology.
3. I am a member in good standing with the Canadian Institute of Mining, and a Director of the local Branch (Haileybury) of the Canadian Institute of Mining.
4. This report is based on work done on the Lundy Township property during 1985.

Haileybury, Ontario  
December, 1985

George W. R. Hill  
George W. R. Hill

George W. Hill

## REFERENCES

Hill; G.W.

1985: Report of Work Done in Lundy Township; In house report to  
Silverside Resources Inc.

Owsiaki; Leo

1981; Geology and Mineral Deposits, Lundy Township; O.G.S. preliminary  
map P2733.



900

Type of Survey(s) Geophysical Lundy  
 Claim Holder(s) Silverside Resources Inc. Prospector's Licence No. T-1067  
 Address Suite 1101-10 King St. E Toronto Ontario M5C 1C3  
 Survey Company Mertens and MacNeil Geophysics Date of Survey (from & to) 01 02 86 to 08 02 86 Total Miles of line Cut 7.9  
 Name and Address of Author (of Geo-Technical report) George Hill P.O. Box 180, 491 Russell St. Haileybury Ont

Credits Requested per Each Claim in Columns at right

Mining Claims Traversed (List in numerical sequence)

Special Provisions	Geophysical	Days per Claim
For first survey: Enter 40 days. (This includes line cutting)	- Electromagnetic	40
	- Magnetometer	20
For each additional survey: using the same grid: Enter 20 days (for each)	- Radiometric	
	- Other	
	Geological	
	Geochemical	

Man Days	Geophysical	Days per Claim
Complete reverse side and enter total(s) here	- Electromagnetic	
	- Magnetometer	
	- Radiometric	
	- Other	
	Geochemical	

Mining Claim			Mining Claim		
Prefix	Number	Expend. Days Cr.	Prefix	Number	Expend. Days Cr.
S	854274	60	S	854306	60
	75	60		307	60
	76	60		308	60
	77	60		309	60
	78	60		310	60
	79	60		311	60
	80	60		312	60
	81	60		313	60
	82	60		791316	60
	83	60		891319	60
	84	60		1791319	
	854299	60		* 19860669	
	95	60			
	96	60			
	97	60			
	98	60			
	99	60			
	854300	60			
	301	60			
	302	60			
	303	60			
	304	60			
	305	60			

Expenditures (excludes power stripping)

Type of Work Performed

Performed on Claim(s)

Calculation of Expenditure Days Credits

Total Expenditures \$  + 15 = Total Days Credits

Instructions  
 Total Days Credits may be apportioned at the claim holder's choice. Enter number of days credits per claim selected in columns at right.

For Office Use Only

Total Days Cr. Recorded 1980 Date Recorded June 9/1986 Mining Recorder [Signature]  
 Date Approved 8.7.86 Branch Director [Signature]

Date 05-06-'86 Recorded Holder or Agent (Signature) [Signature]

Certification Verifying Report of Work  
 I hereby certify that I have a personal and intimate knowledge of the facts set forth in the Report of Work annexed hereto, having performed the work or witnessed same during and/or after its completion and the annexed report is true.

Name and Postal Address of Person Certifying  
George W Hill, P.O. Box 180, 491 Russell St Haileybury Ont  
 Date Certified 05-06-1986 Certified by (Signature) [Signature]

JUNE 24, 1986

MINISTRY OF NORTHERN  
DEVELOPMENT AND MINES  
WHITNEY BLOCK, 6TH FLOOR  
QUEEN'S PARK  
TORONTO, ONTARIO  
M7A 1W3

DEAR SIR:

RE: FILE 2.9171

PLEASE FIND ENCLOSED, THE GEOPHYSICAL SURVEY  
MAPS WITH CLAIM LINES AND CLAIM NUMBERS AS  
REQUESTED IN YOUR LETTER OF JUNE 18, 1984

YOURS SINCERELY

*George W. Hill*

GEORGE W. HILL  
SILVERSIDE RES. INC.  
BOX 307 NORTH COBALT ONT.  
P0J-1R0

RECEIVED

JUN 30 1986

MINING LANDS SECTION

June 18, 1986

File: 2.9171

Silverside Resources Inc  
Suite 1101  
10 King Street East  
Toronto, Ontario  
M5C 1C3

Dear Sirs:

RE: Geophysical (Magnetometer and Electromagnetic) Surveys  
submitted on Mining Claims S 854274, et al, in Lundy  
Township

---

Returned herein are the magnetometer plans (in duplicate) for  
the above-described submission. Please show claim lines and  
claim numbers on each set of plans and return them to this  
office quoting file 2.9171.

For further information, please contact (Mrs.) Susan Hurst at  
(416) 965-4888.

Yours sincerely,

J.C. Smith, Supervisor  
Mining Lands Section

Whitney Block, 6th Floor  
Queen's Park  
Toronto, Ontario  
M7A 1W3

Telephone: (416) 965-4888

SH/mc

cc: George W. Hill  
P.O. Box 180  
491 Russell Street  
Halleybury, Ontario  
POJ 1K0

Mining Recorder  
Sudbury, Ontario  
#86-56

Encl.



Mining Lands Section

File No 29171

Control Sheet

TYPE OF SURVEY

GEOPHYSICAL

GEOLOGICAL

GEOCHEMICAL

EXPENDITURE

MINING LANDS COMMENTS:

---

---

---

---

---

---

---

---

---

---

---

---

*J. Stust*

Signature of Assessor

*June 30/16*

Date

*13*



m em

m em

2-9-71

854274

✓ ✓

854300

✓ ✓

75

✓ ✓

1

✓ ✓

76

✓ ✓

2

✓ ✓

77

✓ ✓

3

✓ ✓

78

✓ ✓

4

✓ ✓

79

✓ ✓

5

✓ ✓

80

✓ ✓

6

✓ ✓

81

✓ ✓

7

✓ ✓

82

✓ ✓

8

✓ ✓

83

✓ ✓

9

✓ ✓

84

✓ ✓

10

✓ ✓

854294

✓ ✓

11

✓ ✓

95

✓ ✓

12

✓ ✓

96

✓ ✓

13

✓ ✓

97

✓ ✓

79/316

✓ ✓

98

✓ ✓

19

✓ ✓

99

✓ ✓

§

# LUNDY

DISTRICT OF TIMISKAMING

SUDBURY  
MINING DIVISION  
SCALE: 1 INCH TO 40 CHAINS

## LEGEND

PATENTED LAND	(P)
CROWN LAND SALE	C.S.
LICENCE OF OCCUPATION	L.O.
LOCATED LANDS	Loc
IMPROVED ROADS	—
ROADS	—
RAILWAYS	—
POWER TRANSMISSION LINE	—
LEASES	(L)
MINING RIGHTS ONLY	M.R.
SURFACE RIGHTS ONLY	S.R.
CANCELLED	C.

## NOTES

LANDS MARKED THUS- (O.F.B.)  
RESERVED FOR ONT. FORESTRY BRANCH  
FOR CABIN, TOWER & RESERVE SITES.

400' Surface Rights Reservation around  
all Lakes and Rivers.

### AREAS WITHDRAWN FROM DISPOSITION

- M.R.O. - MINING RIGHTS ONLY
- S.R.O. - SURFACE RIGHTS ONLY
- M+S. - MINING AND SURFACE RIGHTS

Description	Order No.	Date	Disposition	File
(P) SEC. 36/80	M. 2/83	25/8/83	S.R.O.	188840

DATE OF ISSUE  
MAR 20 1986  
SUDBURY  
MINING RECORDER'S OFFICE

PLAN No. — M-538

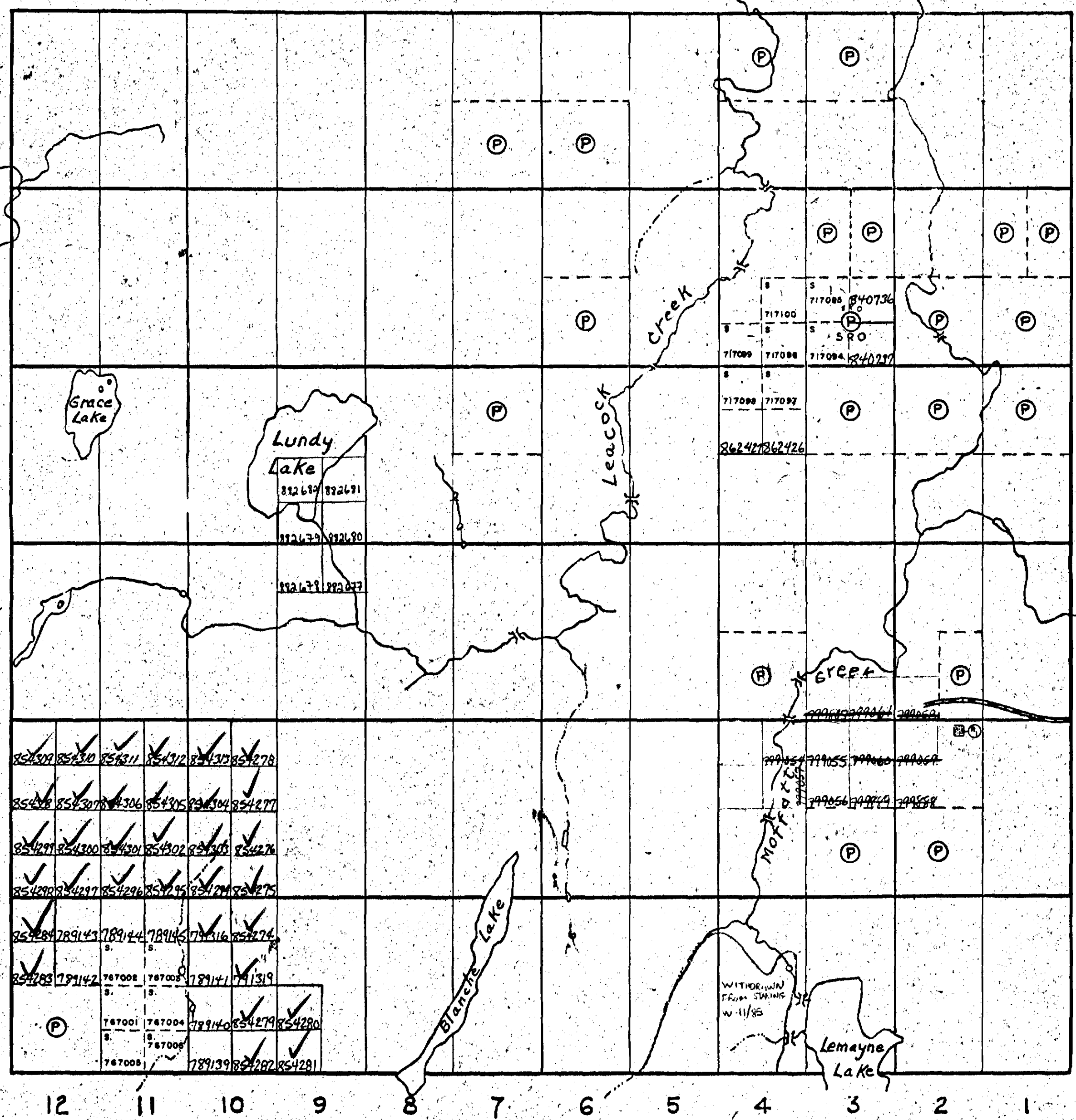
ONTARIO  
MINISTRY OF NATURAL RESOURCES  
SURVEYS AND MAPPING BRANCH

HENWOOD TWP.

VI  
V  
IV  
III  
II  
I

AULD TWP.

HUDSON TWP.



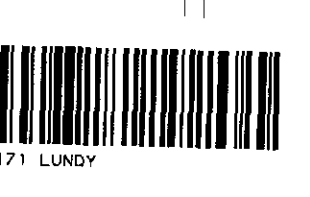
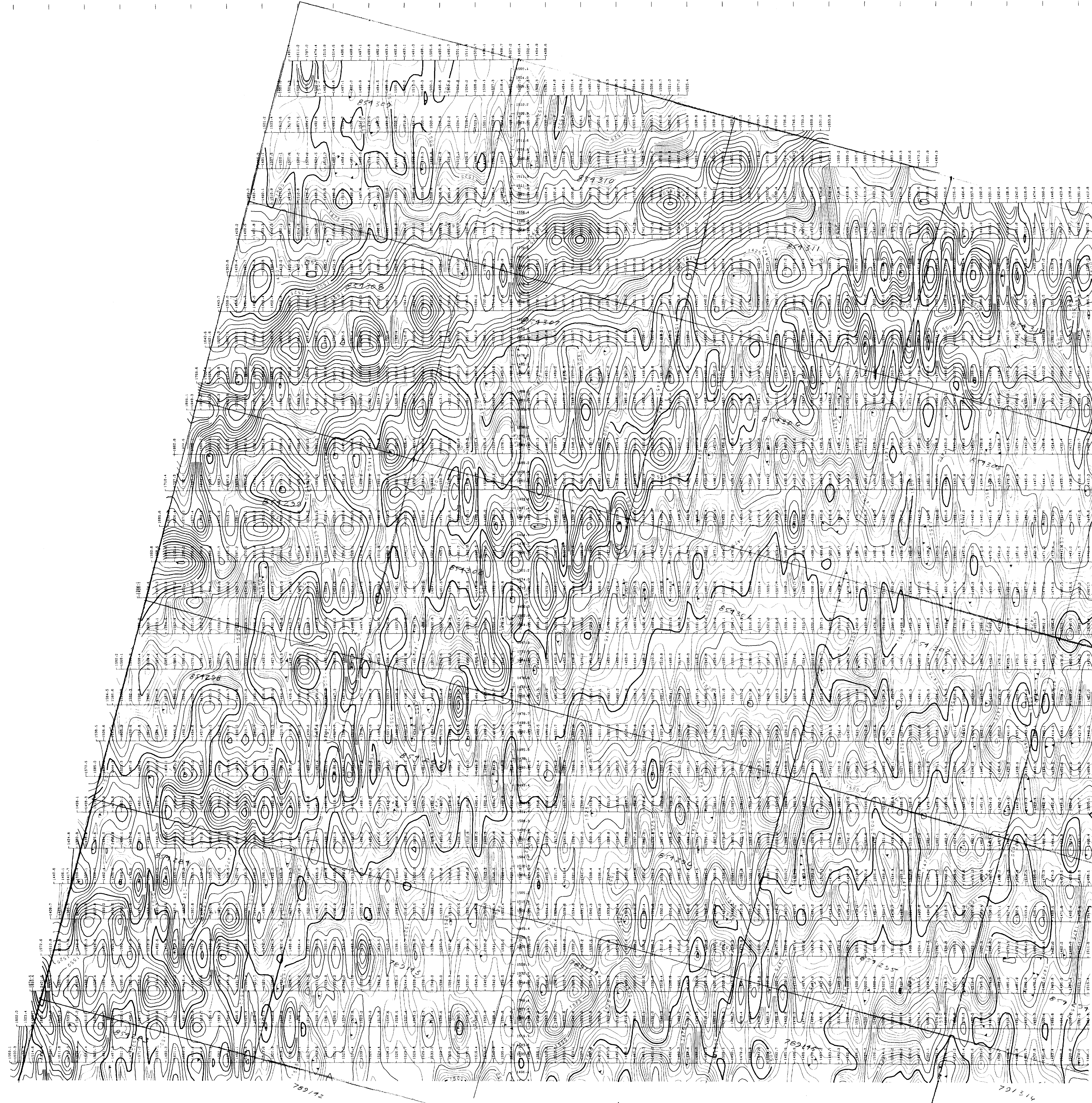
BARR TWP.





- 3000W  
- 2800W  
- 2600W  
- 2400W  
- 2200W  
- 2000W  
- 1800W  
- 1600W  
- 1400W  
- 1200W  
- 1000W  
- 800W  
- 600W  
- 400W  
- 200W  
- BASE LINE  
- 200E  
- 400E  
- 600E  
- 800E  
- 1000E  
- 1200E  
- 1400E  
- 1600E  
- 1800E  
- 2000E  
- 2200E  
- 2400E  
- 2600E  
- 2800E  
- 3000E  
- 3200E

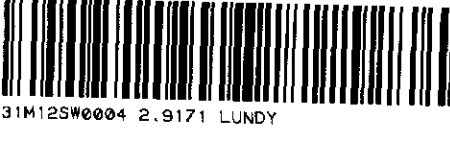
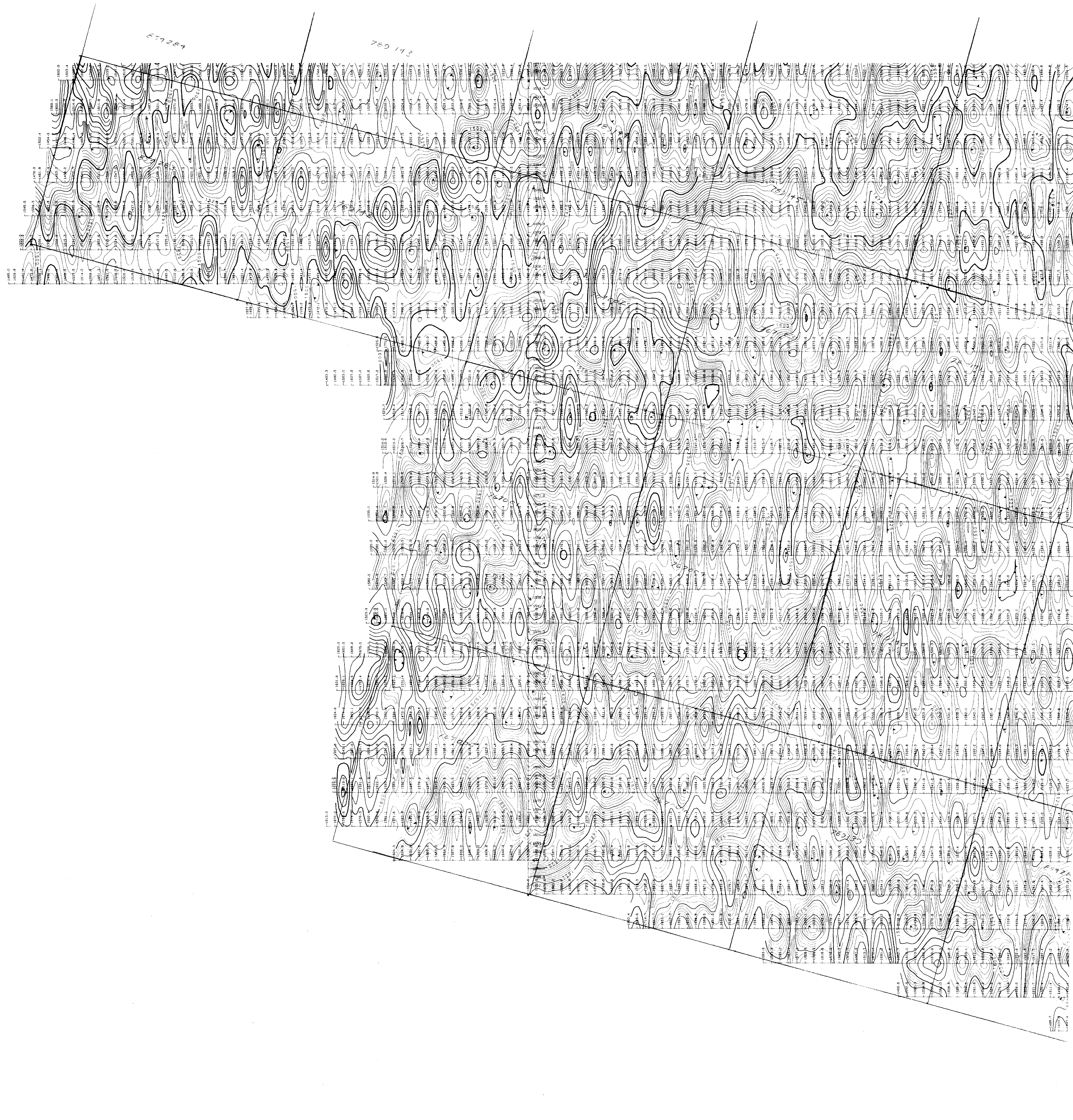
10200N  
10000N  
9800N  
9600N  
9400N  
9200N  
9000N  
8800N  
8600N  
8400N  
8250N  
8200N  
8000N  
7800N  
7600N  
7400N  
7200N  
7000N  
6800N  
6600N  
6400N  
6200N  
6000N  
5800N  
5600N  
5400N  
5200N  
5000N  
4800N  
4600N





4800N  
4600N  
4400N  
4200N  
4000N  
3800N  
3600N  
3400N  
3200N  
3000N  
2800N  
2600N  
2400N  
2200N  
2000N  
1800N  
1600N  
1400N  
1200N  
1000N  
800N  
600N  
400N  
200N  
0N  
200S  
400S  
600S  
800S  
1000S  
1200S

3000W —  
2800W —  
2600W —  
2400W —  
2200W —  
2000W —  
1800W —  
1600W —  
1400W —  
1200W —  
1000W —  
800W —  
600W —  
400W —  
200W —  
BASE LINE —  
200E —  
400E —  
600E —  
800E —  
1000E —  
1200E —  
1400E —  
1600E —  
1800E —  
2000E —  
2200E —  
2400E —  
2600E —  
2800E —  
3000E —

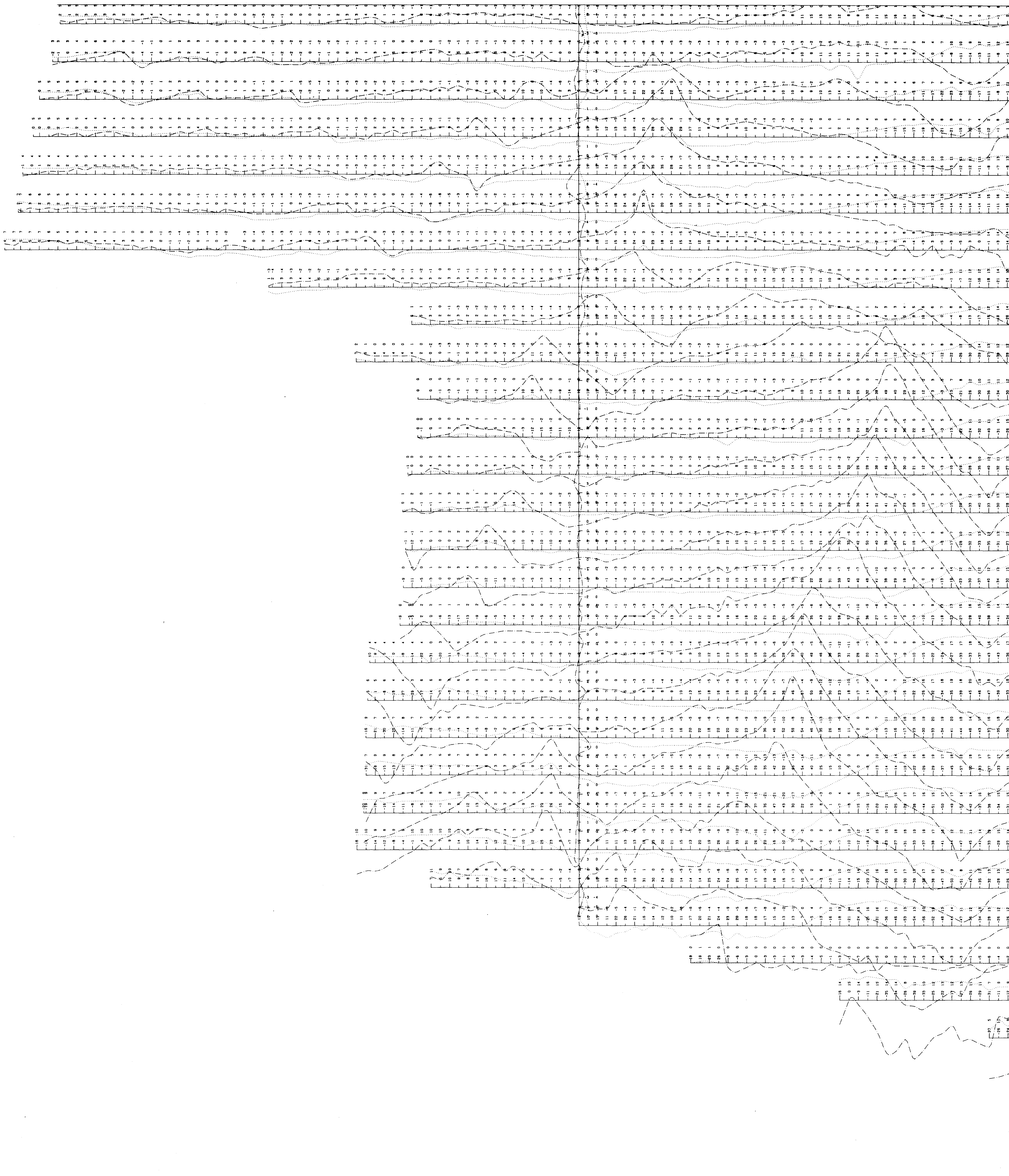






4800N  
4600N  
4400N  
4200N  
4000N  
3800N  
3600N  
3400N  
3200N  
3000N  
2800N  
2600N  
2400N  
2200N  
2000N  
1800N  
1600N  
1400N  
1200N  
1000N  
800N  
600N  
400N  
200N  
ON  
200S  
400S  
600S  
800S  
1000S  
1200S

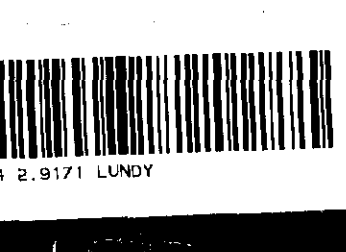
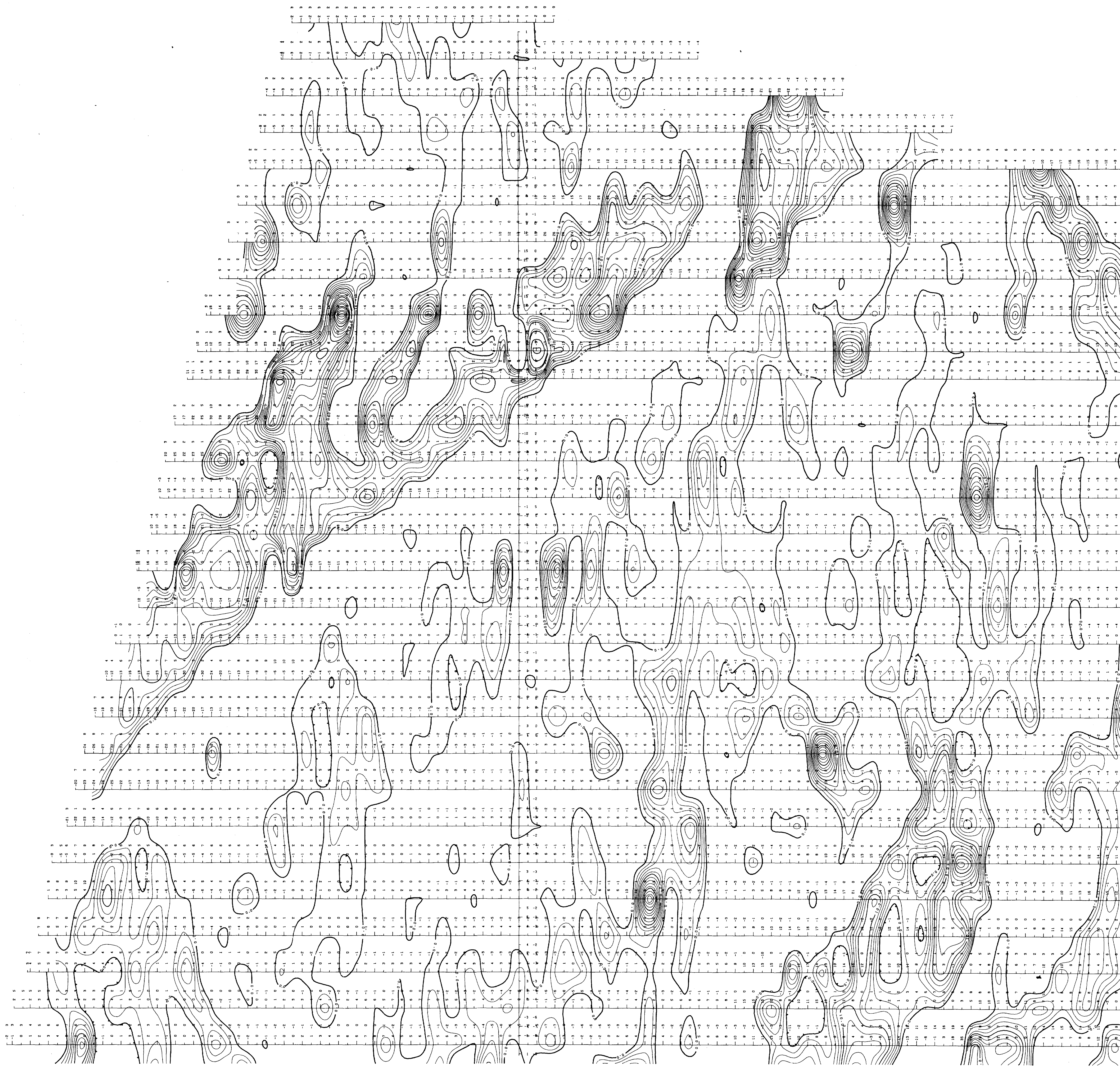
3000W —  
2800W —  
2600W —  
2400W —  
2200W —  
2000W —  
1800W —  
1600W —  
1400W —  
1200W —  
1000W —  
800W —  
600W —  
400W —  
200W —  
BASE LINE —  
200E —  
400E —  
600E —  
800E —  
1000E —  
1200E —  
1400E —  
1600E —  
1800E —  
2000E —  
2200E —





— 3000M — 2800M — 2600M — 2400M — 2200M — 2000M — 1800M — 1600M — 1400M — 1200M — 1000M — 800M — 600M — 400M — 200M — BRSE LINE — 200E — 400E — 600E — 800E — 1000E — 1200E — 1400E — 1600E — 1800E — 2000E — 2200E — 2400E — 2600E — 2800E — 3000E — 3200E

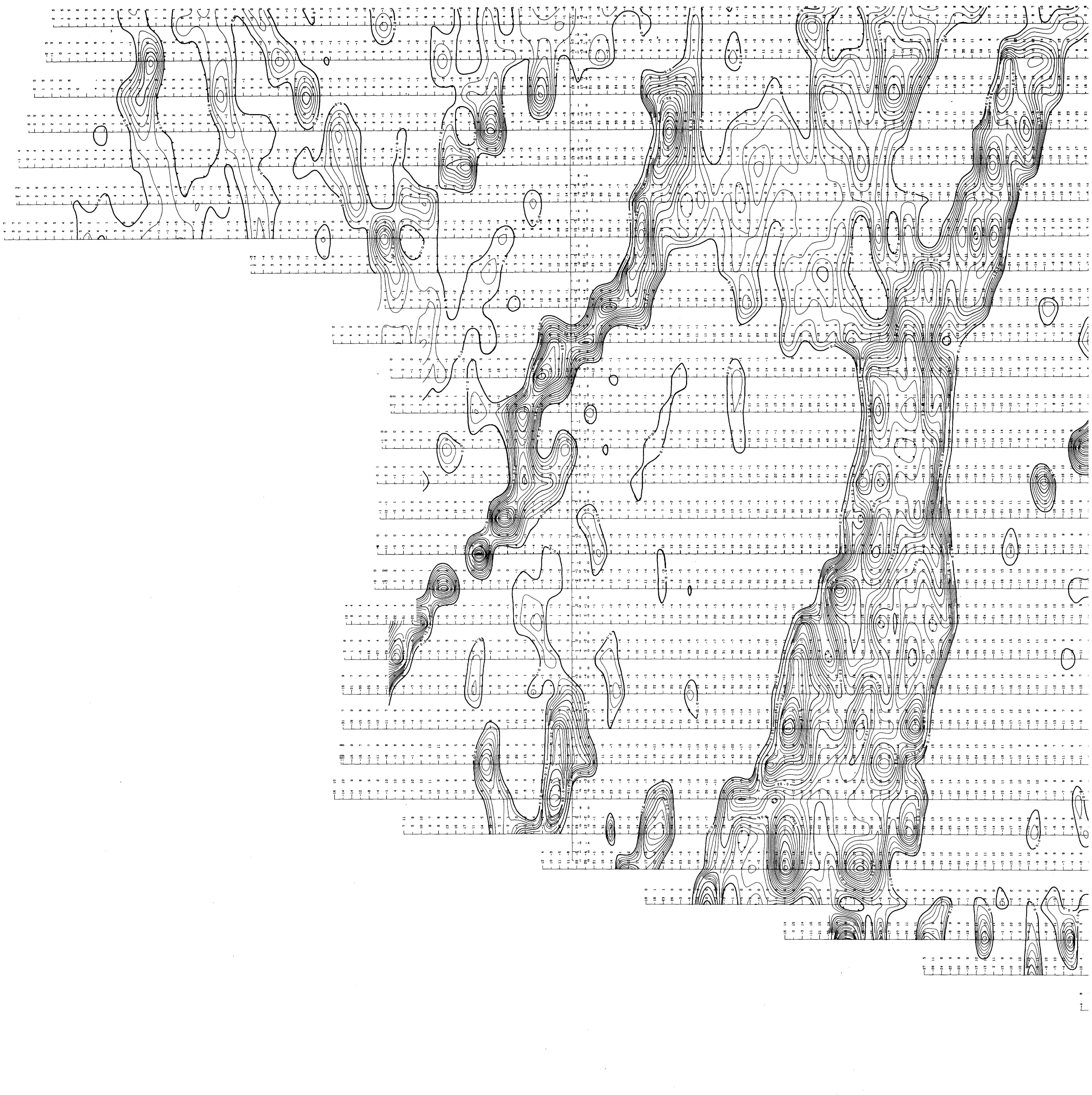
10200N  
10000N  
9800N  
9600N  
9400N  
9200N  
9000N  
8800N  
8600N  
8400N  
8250N  
8200N  
8000N  
7800N  
7600N  
7400N  
7200N  
7000N  
6800N  
6600N  
6400N  
6200N  
6000N  
5800N  
5600N  
5400N  
5200N  
5000N  
4800N  
4600N



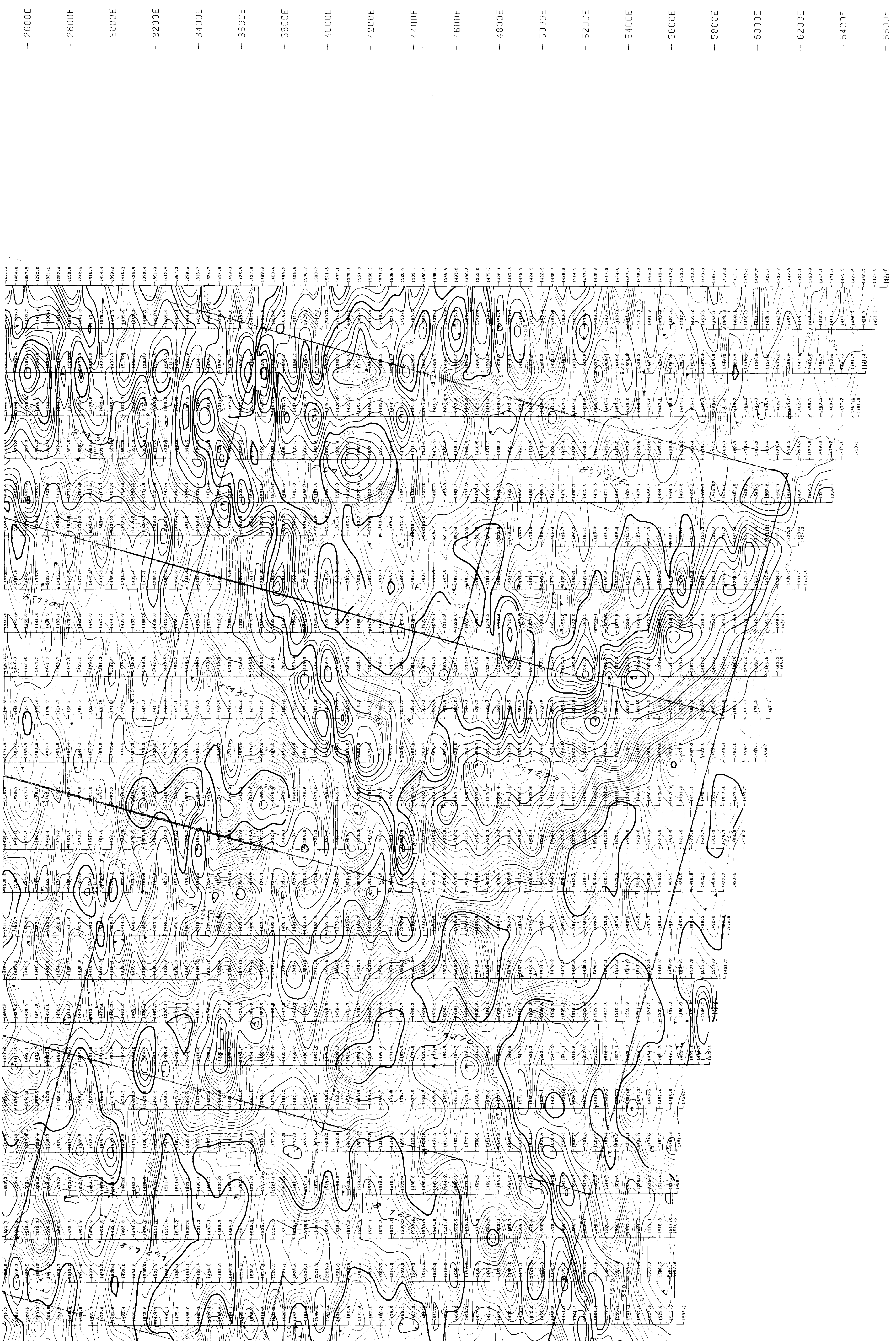


4800N  
4600N  
4400N  
4200N  
4000N  
3800N  
3600N  
3400N  
3200N  
3000N  
2800N  
2600N  
2400N  
2200N  
2000N  
1800N  
1600N  
1400N  
1200N  
1000N  
800N  
600N  
400N  
200N  
0N  
200S  
400S  
600S  
800S  
1000S  
1200S

3000E —  
2800E —  
2600E —  
2400E —  
2200E —  
2000E —  
1800E —  
1600E —  
1400E —  
1200E —  
1000E —  
800E —  
600E —  
400E —  
200E —  
BASE LINE —  
200E —  
400E —  
600E —  
800E —  
1000E —  
1200E —  
1400E —  
1600E —  
1800E —  
2000E —  
2200E —  
2400E —  
2600E —  
2800E —  
3000E —







10200N  
10000N  
9800N  
9600N  
9400N  
9200N  
9000N  
8800N  
8600N  
8400N  
8200N  
8000N  
7800N  
7600N  
7400N  
7200N  
7000N  
6800N  
6600N  
6400N  
6200N  
6000N  
5800N  
5600N  
5400N  
5200N  
5000N  
4800N  
4600N

707514

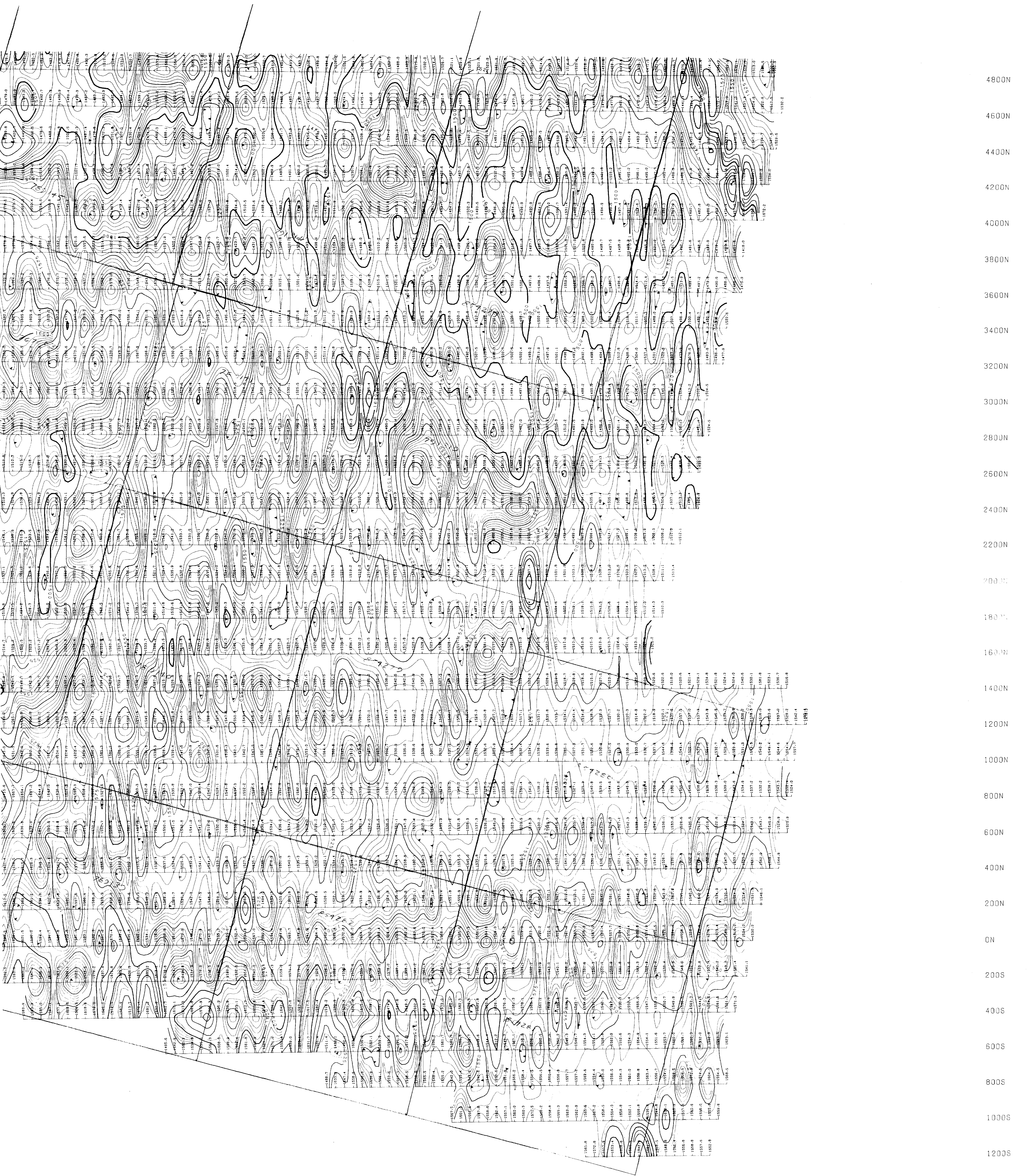
87277

29171

TOTAL FIELD MAGNETOMETER SURVEY  
BY  
MERTENS MACNEIL  
MCWATT LANDING ONT. (NPK11-141)  
CONTOUR INTERVAL: 5 GAMMA  
**LUNDY LAKE GRID**  
DATE: MARCH 1986 1:2400 LATITUDE: 57°00'N  
PROCESSED BY DATAPLOTTING SERVICES INC.

Mertens MacNeil





1400E —  
1600E —  
1800E —  
2000E —  
2200E —  
2400E —  
2600E —  
2800E —  
3000E —  
3200E —  
3400E —  
3600E —  
3800E —  
4000E —  
4200E —  
4400E —  
4600E —  
4800E —  
5000E —  
5200E —  
5400E —  
5600E —  
5800E —  
6000E —  
6200E —  
6400E —

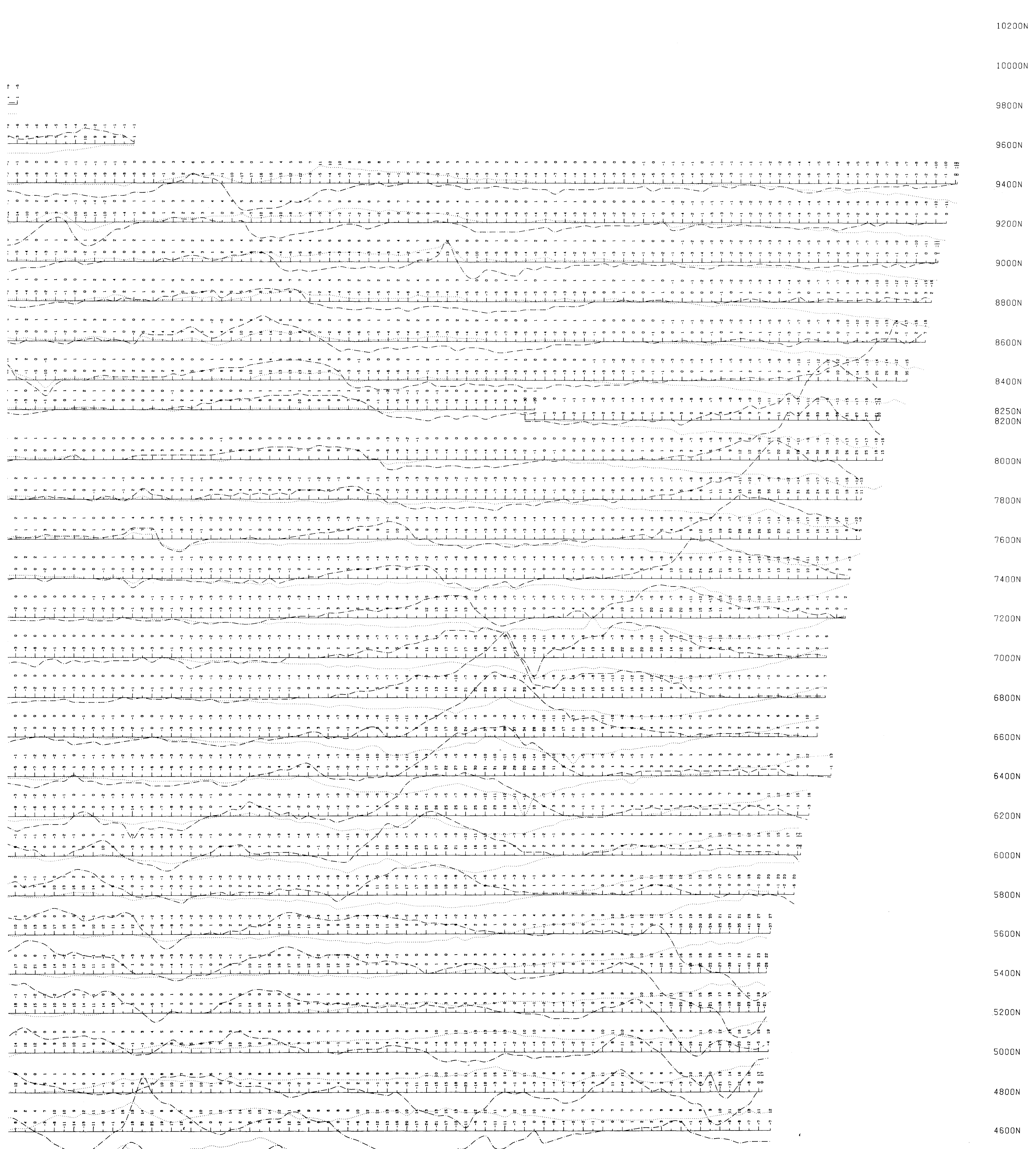
4800N  
4600N  
4400N  
4200N  
4000N  
3800N  
3600N  
3400N  
3200N  
3000N  
2800N  
2600N  
2400N  
2200N  
2000N  
1800N  
1600N  
1400N  
1200N  
1000N  
800N  
600N  
400N  
200N  
0N  
200S  
400S  
600S  
800S  
1000S  
1200S

TOTAL FIELD MAGNETOMETER SURVEY  
BY  
MERTENS MACNEIL 2971  
MOWATT LANDING ONT. (SOUTH HALF)  
CONTOUR INTERVAL 5 GAMMAG  
LUNDY LAKE GRID  
DATE: MARCH 1986 1:2400 DATUM: 57000  
PROCESSED BY DATAPLOTTING SERVICES INC.

*Isengw. Hill*

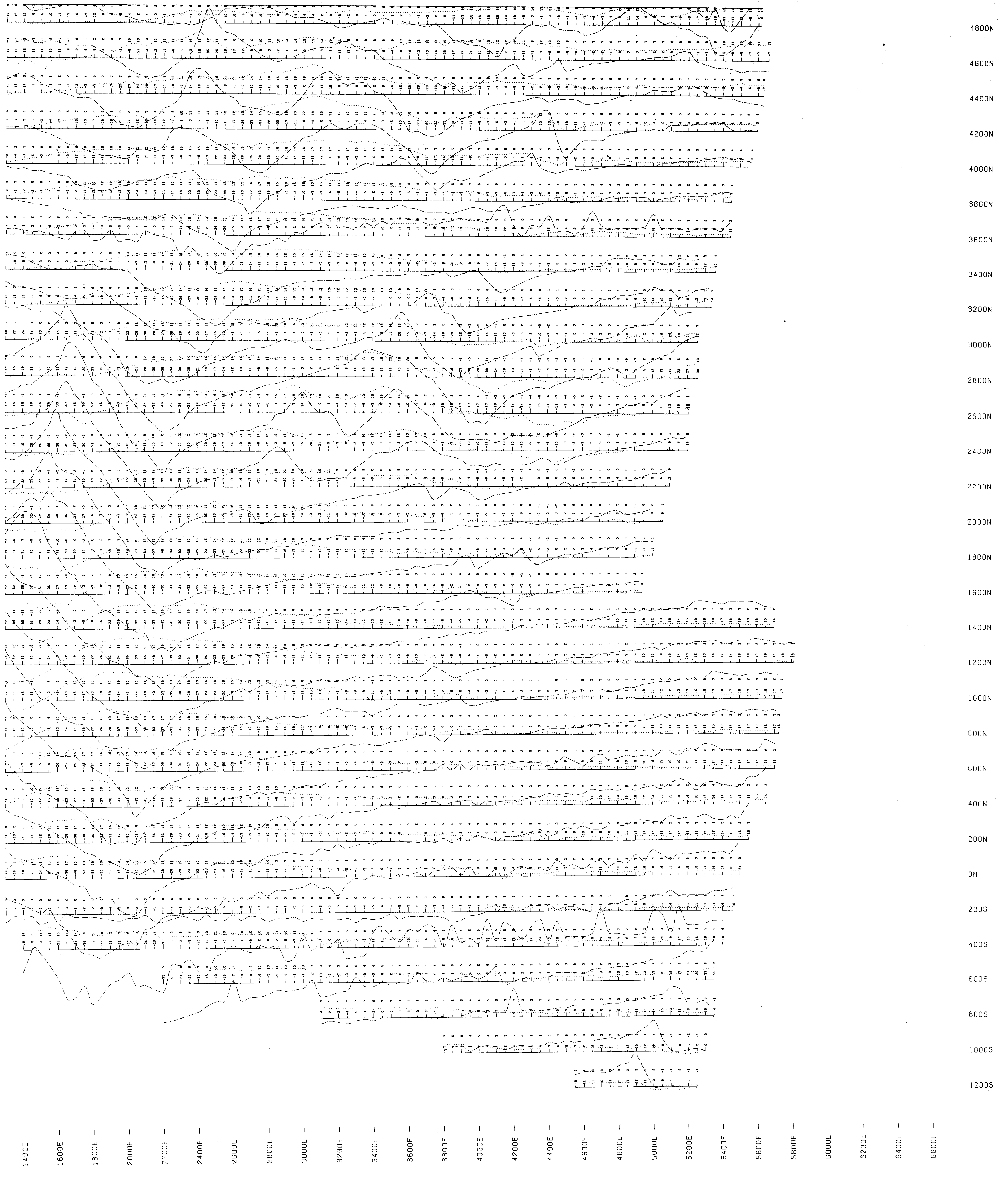


— 1800E — 2000E — 2200E — 2400E — 2600E — 2800E — 3000E — 3200E — 3400E — 3600E — 3800E — 4000E — 4200E — 4400E — 4600E — 4800E — 5000E — 5200E — 5400E — 5600E — 5800E — 6000E — 6200E — 6400E — 6600E



VLF SURVEY 29171  
BY MERTENS MACNEIL  
MOWATT LANDING ONT. (NORTH HALF)  
ONE INCH = TWENTY FIVE PERCENT  
LUNDY LAKE GRID  
DATE: MARCH 1986 1 : 2400  
PROCESSED BY DATAPLOTTING SERVICES INC.

*Murray W. Hill*



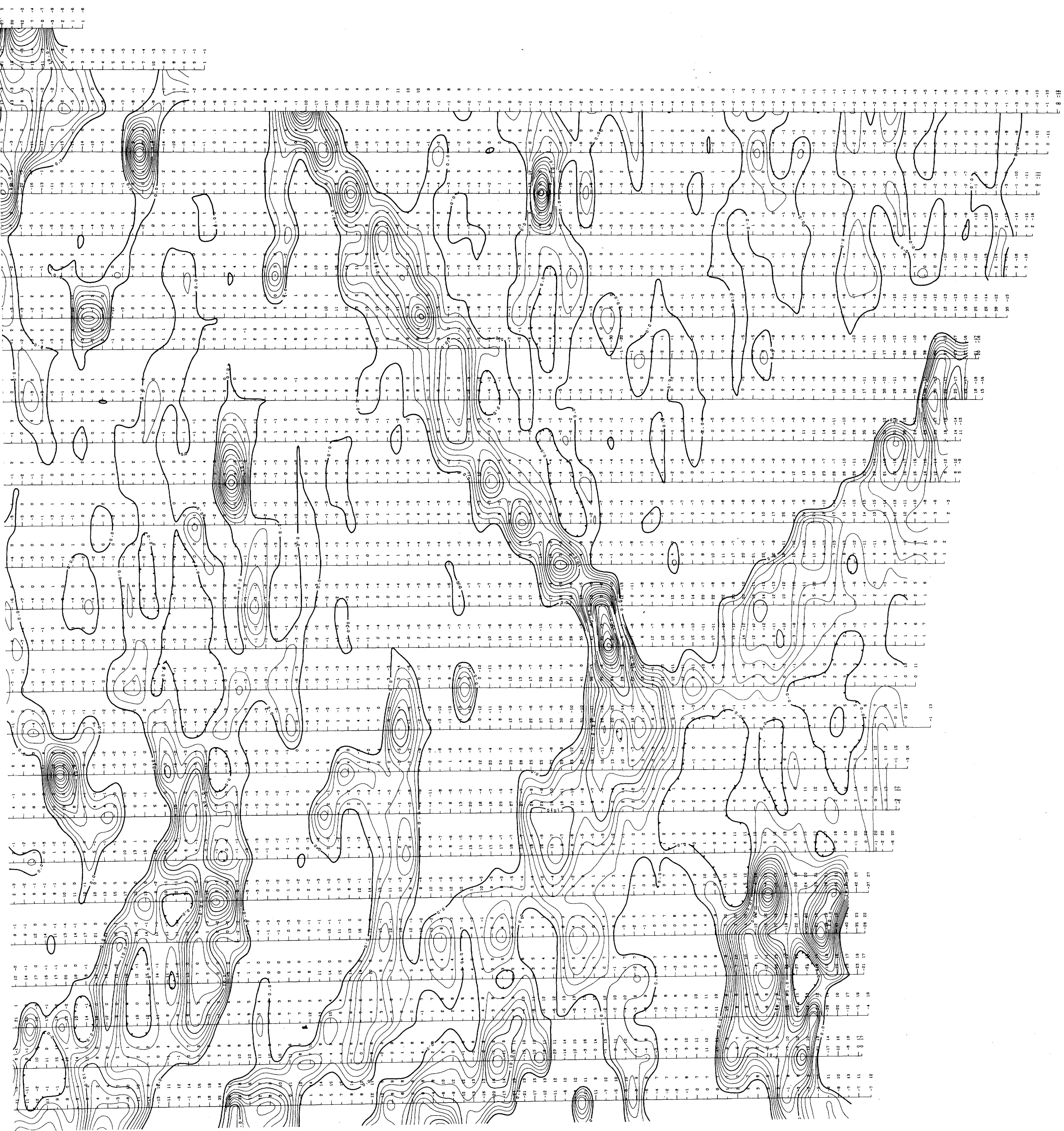
VLF SURVEY  
 BY  
 MERTENS MACNEIL 29171  
 MOWATT LANDING ONT. (SOUTH HALF)  
 ONE INCH = TWENTY FIVE PERCENT  
**LUNDY LAKE GRID**  
 DATE: MARCH 1986 1:2400  
 PROCESSED BY DATAPLOTTING SERVICES INC.

*J. George W. Hill*



1400E  
1600E  
1800E  
2000E  
2200E  
2400E  
2600E  
2800E  
3000E  
3200E  
3400E  
3600E  
3800E  
4000E  
4200E  
4400E  
4600E  
4800E  
5000E  
5200E  
5400E  
5600E  
5800E  
6000E  
6200E  
6400E  
6600E

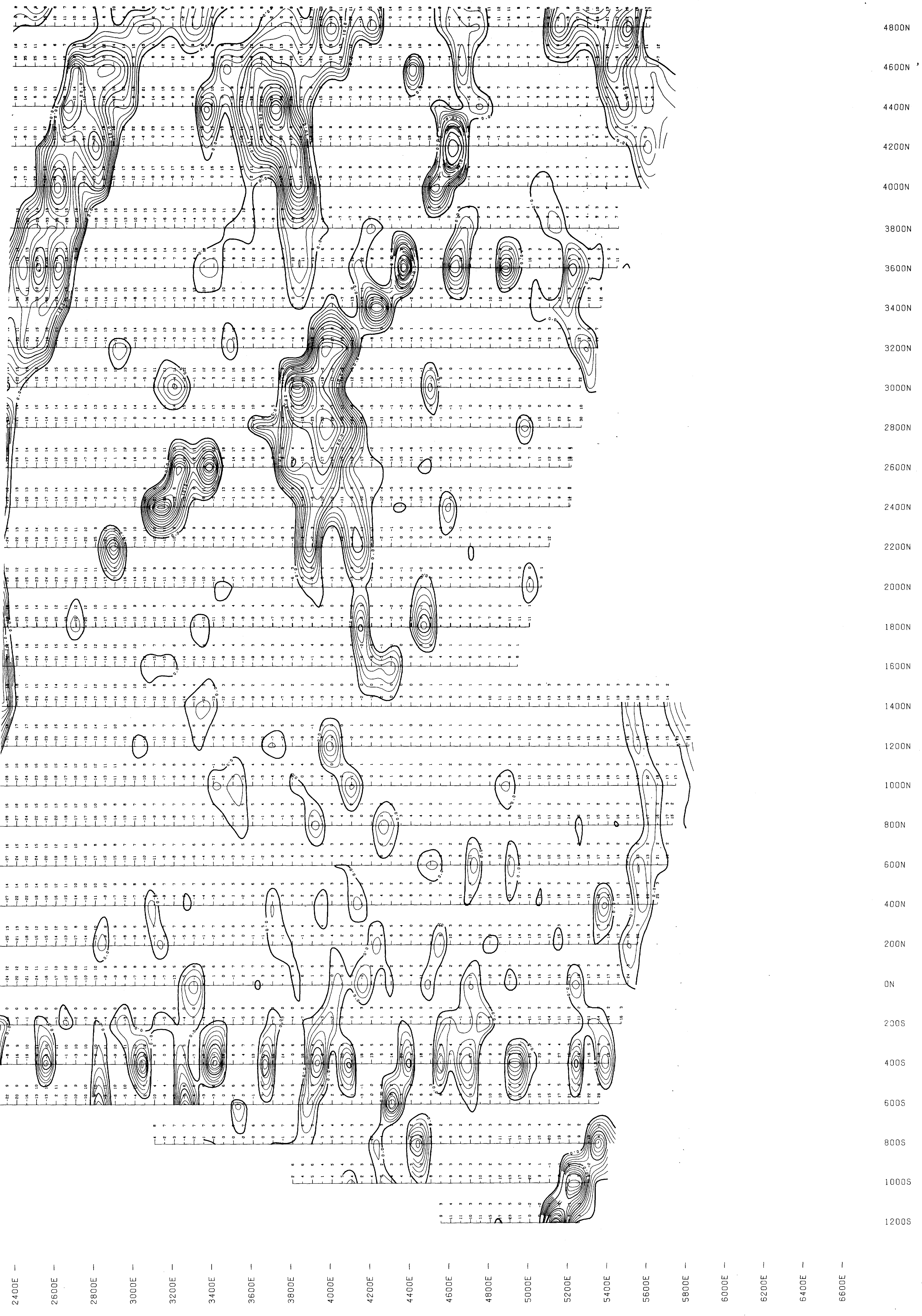
10200N  
10000N  
9800N  
9600N  
9400N  
9200N  
9000N  
8800N  
8600N  
8400N  
8250N  
8200N  
8000N  
7800N  
7600N  
7400N  
7200N  
7000N  
6800N  
6600N  
6400N  
6200N  
6000N  
5800N  
5600N  
5400N  
5200N  
5000N  
4800N  
4600N



FRASER FILTERED VLF CONTOURS  
BY  
MERTENS MACNEIL 29171  
MOWATT LANDING ONT. (NORTH HALF)  
CONTOUR INTERVAL 2 PERCENT  
LUNDY LAKE GRID  
DATE: MARCH 1986 1 : 2400  
PROCESSED BY DATAPLOTTING SERVICES INC.

*Handwritten signature*





4800N  
4600N  
4400N  
4200N  
4000N  
3800N  
3600N  
3400N  
3200N  
3000N  
2800N  
2600N  
2400N  
2200N  
2000N  
1800N  
1600N  
1400N  
1200N  
1000N  
800N  
600N  
400N  
200N  
0N  
200S  
400S  
600S  
800S  
1000S  
1200S

2400E —  
2600E —  
2800E —  
3000E —  
3200E —  
3400E —  
3600E —  
3800E —  
4000E —  
4200E —  
4400E —  
4600E —  
4800E —  
5000E —  
5200E —  
5400E —  
5600E —  
5800E —  
6000E —  
6200E —  
6400E —  
6600E —

FRASER FILTERED VLF CONTOURS		
BY MERTENS MACNEIL 29771		
MOWATT LANDING ONT. (SOUTH HALF) CONTOUR INTERVAL 2 PERCENT		
LUNDY LAKE GRID		
DATE: MARCH 1986	1 : 2400	
PROCESSED BY DATAPLOTTING SERVICES INC.		

*George W. Hill*