



31M13NW0027 63.5918 CATHARINE

3.5918

010 0P90-366

Project Koy Salo Catherine Property.

- 1 Minerals Cu & Au.
- 2 Location 10 miles south of Larder Lake on Hwy #624
- 3 District Temiskaming
Townships Catherine and Larder Larder Lake
Mining Division
- 4 Access via paved Hwy #624 then east for 1000' on logging road.

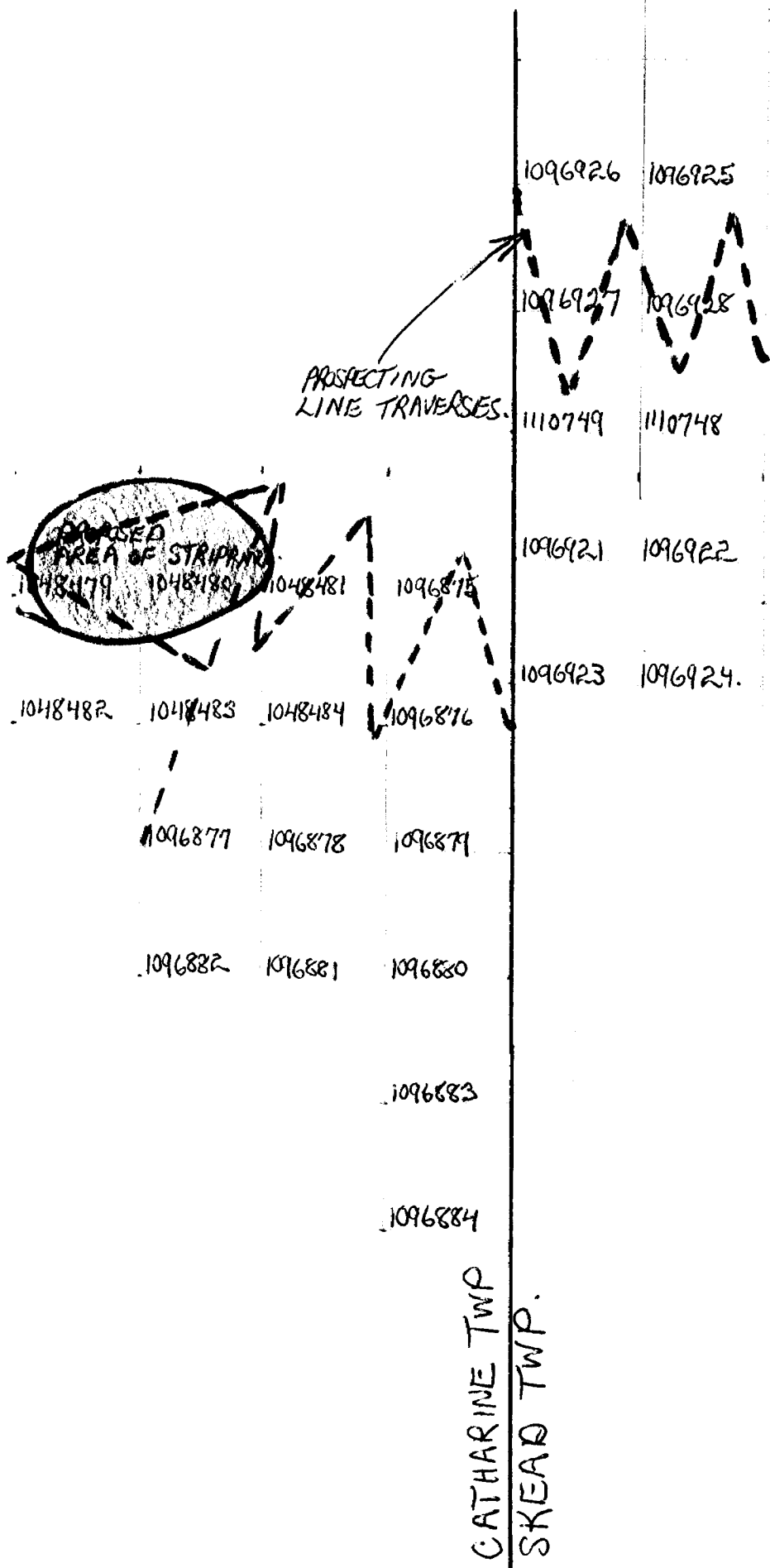
Property Status - A total of 26 ~~contiguous~~ contiguous patented claims 10 in Larder Twp & 16 in Catherine Twp

Geology - The property is thought to be underlain by early Proterozoic volcanics, also sedimentary and intrusive rocks. Most of the property is covered by sand and ~~gravel~~ gravel or swamps. These units are cut by quartz veins with minor associated pyrite + chalcoprite in the stripped out area. There seems to be an association with the shearing and faulting in relationship to the mineralization as it is localized along the faulting and shearing.

Work done - A programme of power stripping, assaying, prospecting and minor localized geophysics (ground) was completed in the spring, summer and fall of 1990. Results were encouraging based on the wide spread values of Au & Cu in the stripped out area. As indicated on the reports the localized geophysics on claim # 1048480 just 200' to 300' north of the stripped area show

an, east-west striking conductor. It is my view that
this conductor has economic potential. It is recommended
to cross-section this conductor with a 129 meter BQ drill
hole as prepared on the geophysics sheets.

LOCATION MAP.



NOTES

400 surface rights apply to the shores of lakes and rivers.

AREAS WITHDRAWN FROM DISPOSITION

- M.R.O. - MINING RIGHTS ONLY
- S.R.O. - SURFACE RIGHTS ONLY
- M.+S. - MINING AND SURFACE RIGHTS

Description Order No. Date Disposition File

NOTICE OF FORESTRY ACTIVITY

THIS TOWNSHIP / AREA FALLS WITHIN THE _____
 TIMISKAMING MANAGEMENT UNIT
 AND MAY BE SUBJECT TO FORESTRY OPERATIONS.
 THE MNR UNIT FORESTER FOR THIS AREA CAN BE
 CONTACTED AT: P.O. BOX 129
 SWASTIKA, ONT.
 POK ITO
 705-642-3222

LEGEND

- PATENTED LAND (P or P)
 - PATENTED FOR SURFACE RIGHTS ONLY (P)
 - LEASE (L)
 - LICENSE OF OCCUPATION (L.O.)
 - CROWN LAND SALES (C.S.)
 - LOCATED LAND (Loc.)
 - CANCELLED (C.)
 - MINING RIGHTS ONLY (M.R.O.)
 - SURFACE RIGHTS ONLY (S.R.O.)
 - HIGHWAY & ROUTE NO. (—)
 - ROADS (—)
 - TRAILS (—)
 - RAILWAYS (—)
 - POWER LINES (—)
 - MARS OR MUSKEG (—)
 - MINES (—)
- *Used only with symbol locations or when space is limited

TOWNSHIP OF

CATHARINE

DISTRICT OF
 TIMISKAMING

LARDER LAKE
 MINING DIVISION

SCALE: 1 INCH = 40 CHAINS (1/2 MILE)

DATE OF ISS

OCT 20 1990

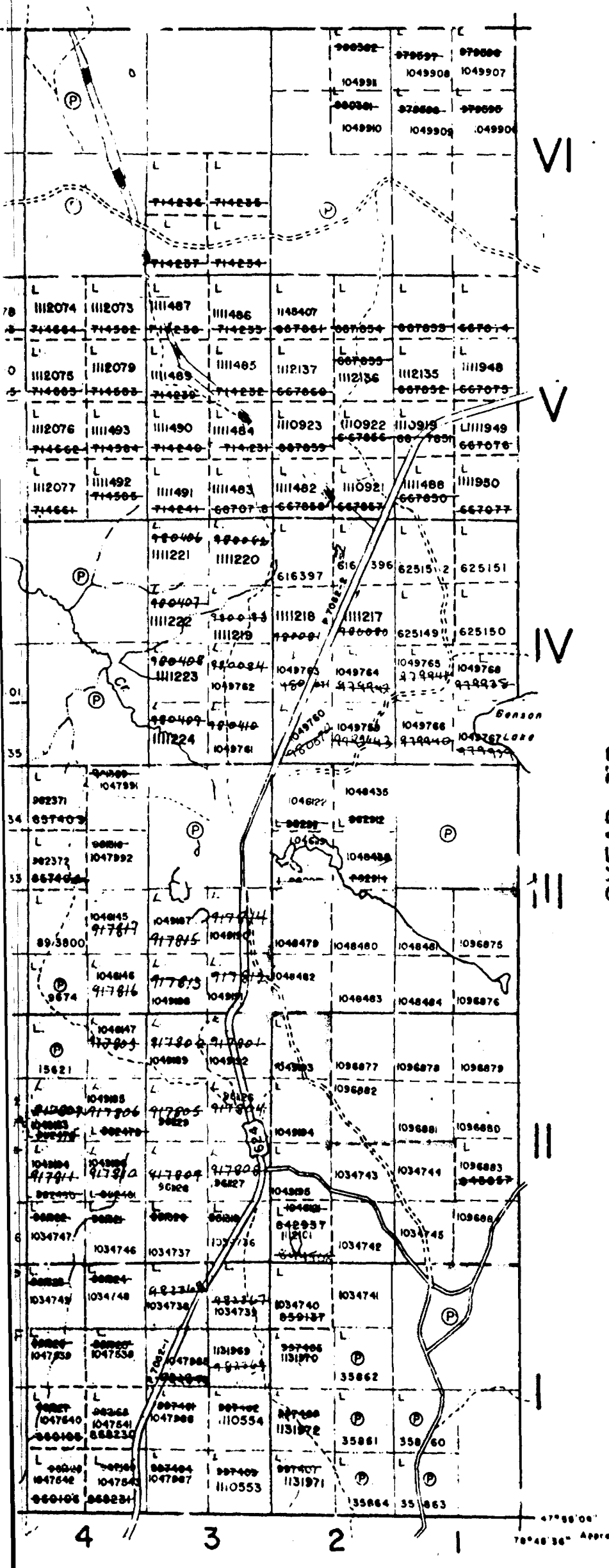
DR. _____
 DATE JULY 1990

PLAN NO. G-3615



Ministry of
 Natural Resources

Ministry of
 Northern Development



VI

V

IV

III

II

I

SKEAD TR.

47°55'00"
 78°48'36" West

NOTES

rights reservation along the shores
and rivers.

D GRAVEL
NO. 27

DATE OF ISSUE
JUL 28 1988
LAGER LANE
MINING RIGHTS OFFICE

APPLICATION UNDER PUBLIC LANDS ACT

WITHDRAWN FROM STAKING

and Mining Rights Withdrawn from
section 36/80 order No. W-83-83

and Mining Rights Withdrawn from
section 36/80 order No. W-8-86

and Mining Rights Withdrawn from
section 36/80 order No. W-7-86

OPENED BY ORDER O-19/84, NOV 30/84
REOPENED BY ORDER NO. O-L10/89 NR
REOPENED BY ORDER O-L11-90NR A
and Mining Rights Withdrawn from
section 36/80 order No. W-8-86
OPENED BY ORDER O-19/84, NOV 30/84

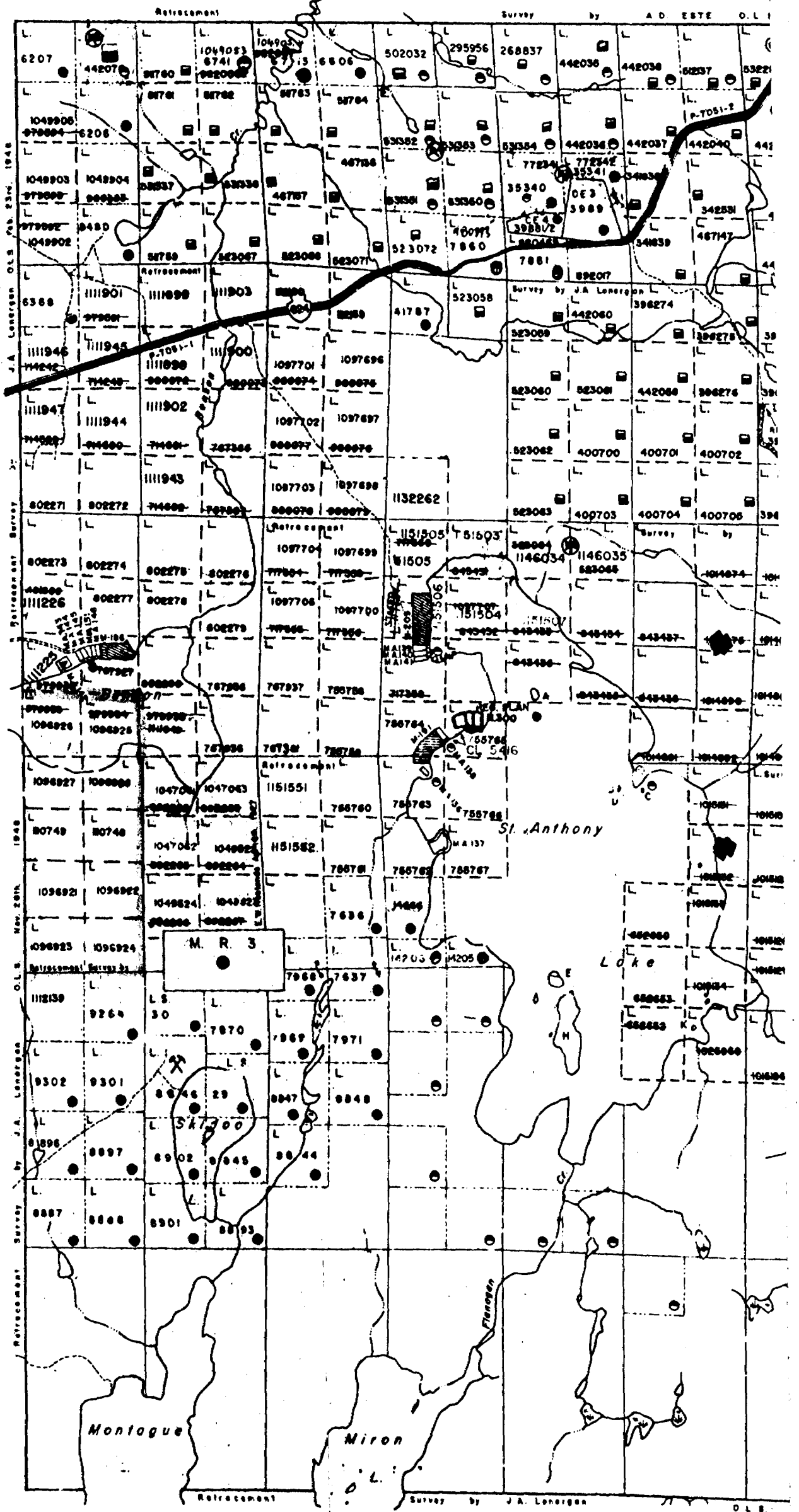
and Mining Rights Withdrawn from
section 36/80 order No. W-9-86

OPENED O34/86, O33/86, O12/87
OPENED BY O 27 86 NR MAR 30/86

and Mining Rights Withdrawn from
section 36/80 order No. W-72-87
O BY O-17/86L NOV 30/86

THE INFORMATION THAT
APPEARS ON THIS MAP
HAS BEEN COMPILED
FROM VARIOUS SOURCES,
AND ACCURACY IS NOT
GUARANTEED. THOSE
WISHING TO STAKE MIN-
ING CLAIMS SHOULD CON-
SULT WITH THE MINING
RECORDER, MINISTRY OF
NORTHERN DEVELOP-
MENT AND MINES, FOR AD-
DITIONAL INFORMATION
ON THE STATUS OF THE
LANDS SHOWN HEREON.

HEARST TP.



CATHARINE TP. M.336

1 2 3 4 5 6

BAYLY TP.



31M13NW0027 63.5918 CATHARINE

900

DM CP 90 - 366

THIS SUBMITTAL CONSISTED OF VARIOUS REPORTS, SOME OF WHICH HAVE BEEN CULLED FROM THIS FILE. THE CULLED MATERIAL HAD BEEN PREVIOUSLY SUBMITTED UNDER THE FOLLOWING RECORD SERIES (THE DOCUMENTS CAN BE VIEWED IN THESE SERIES):

DDH 90-1 102ft length → see ~~file~~ DD Report #43
by Robert Kosy, August 190 for Catharine Twisp

Assay Certificates dated → see file # 2.13892
June 20/90 to Sept 26/90 Row# W9108,00046
for R. Kosy

Map-Mini Maps dated → see file # 63.5887
Oct 10/90 for Kosy -
Salo Property

-ASSAY PLAN + RESULTS
-AND STRIPPING PLAN
-DIAMOND DRILL LOCATION

ACCAYS	AU	CU	ZN	SILVER
1-90	450 PPB	1930 PPM		
2-90	139 PPB	353 PPM		
3-90	26 PPB	306 PPM		
4-90	NIL PPB	18 PPM		
5-90	797 PPB	4100 PPM		
6-90	487 PPB	820 PPM		
7-90	65 PPB		105 PPM	
8-90				
9-90	27 PPB	28 PPM		
10-90	14 PPB			
11-90		13 PPM	151 PPM	
12-90	NIL PPB			
13-90	727-724	6660		
14-90	72 PPB			
15-90	677-910	5780		
16-90	NIL			
17-90	7			
18-90	36			
19-90	NIL			
20-90	NIL PPB			
21-90	367	118		
22-90	73	212		
23-90	3223			
24-90	222	8520		
25-90	105	2230		
26-90	535			
27-90	1101 PPB	9440		
28-90	1186	12400		
29-90	38			
30-90	271	10100		
31-90	219	363		
32-90	14			
33-90	10			
34-90	14			
35-90	NIL			
36-90	NIL			
37-90	247			
38-90	669	52		
39-90	21	2110		
40-90	NIL	34		
41-90	384	639		
42-90	213	578		
43-90	NIL			
44-90	2133			
45-90	10			
46-90	34			
47-90	14			
48-90	987	488		
49-90	898	1180		
50-90	10			
51-90	432			
52-90	323	3240		
53-90	166			
54-90	24			
55-90	71			

1048481

1048483

1048480
NE 1/4 OF S. 1/4 LOT 2 CONT.
CATHARINE TOWNSHIP
LARGER LIME MINING DIVISION.

ANDERSON
ANDERSON ENVIRONMENTAL

FLOAT

FLOAT

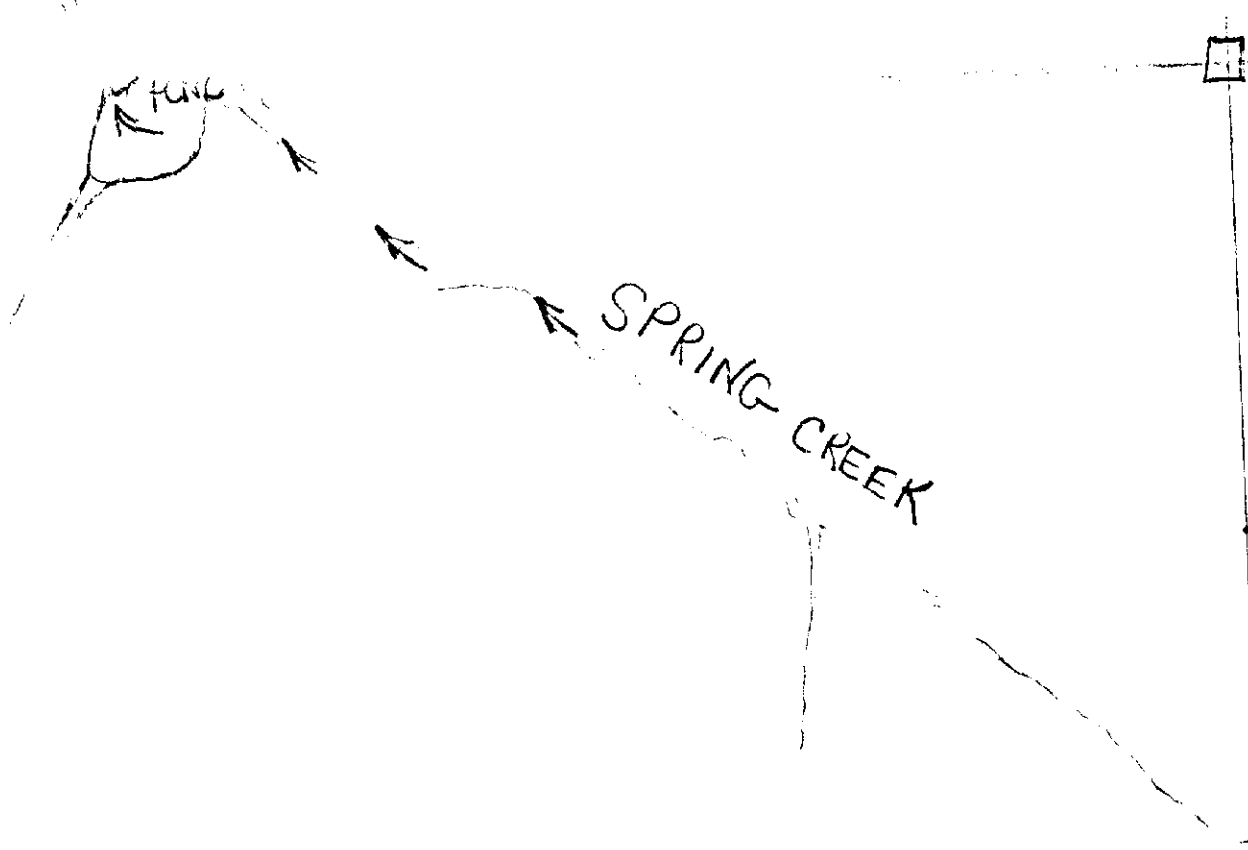
FLOAT

FLOAT

FLOAT

LOGGING ROAD

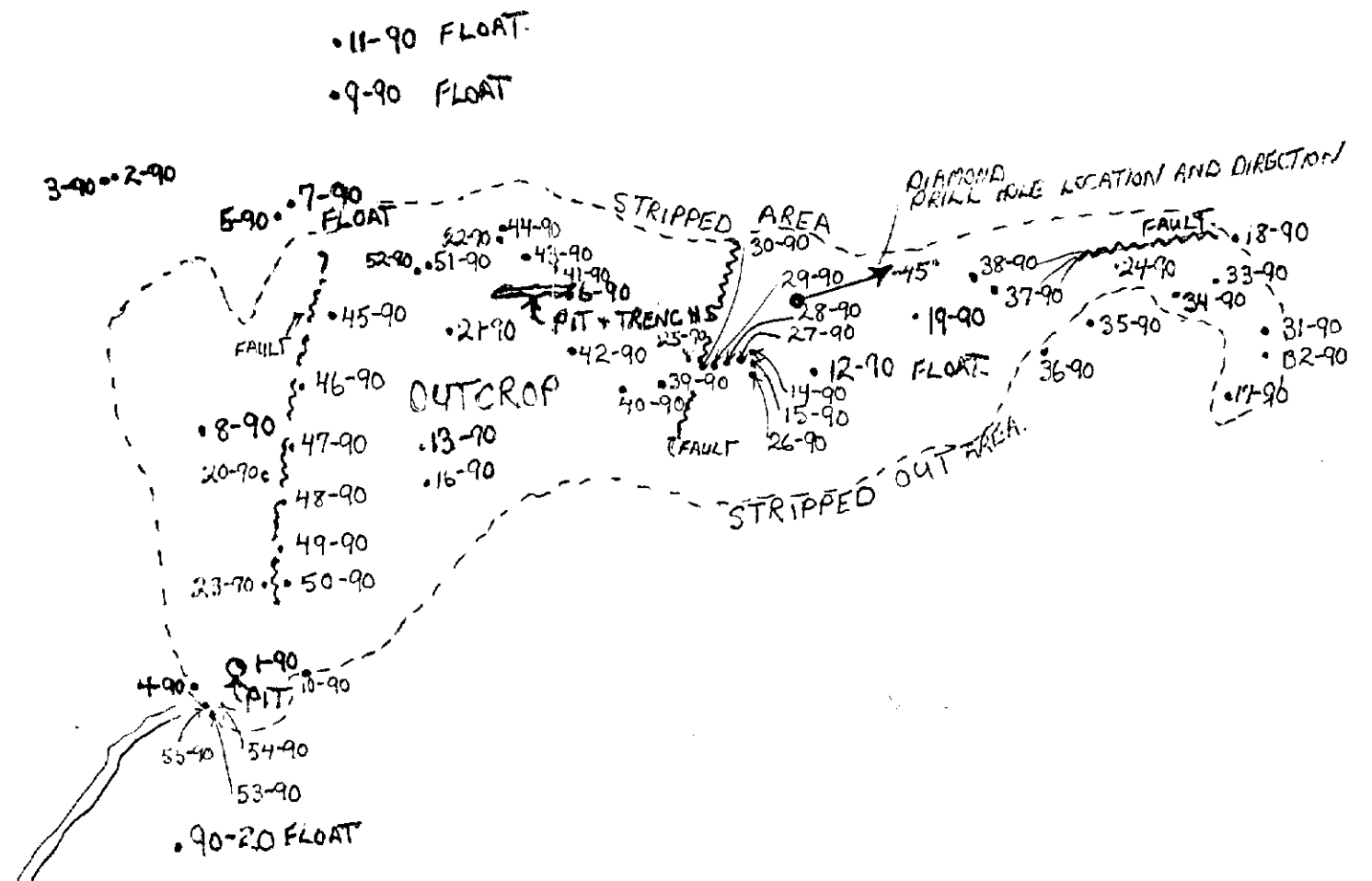
1048482 1048483
To Hwy 624
APPROX 1800' WEST TO HWY 624 ON OLD LOGGING ROAD.
FROM 13 MILES NORTH TO ARBOR LAKE OR 15 MILES SOUTH TO BENDALBERT.



SCALE 1" = 110'



63.5918



ROCK TYPES + SAMPLING

- ① FINE TO COARSE GRAINED LIGHT TO DARK GREEN BASIC VOLCANICS (ANDESITE) MOST FREQUENT ROCK TYPE. SOME ARE FINE.
- ② GABBROS VERY DARK SOME ARE VERY DARK AND FINE GRAINED.
- ③ Rhyolite
- ④ A HORIZON OF STUFF AT THE WEST OF STRIPPED AREA AND ALSO AT THE BASE OF THE STRIPPED AREA

ROCK UNITS ARE STRIPPED WEST AND WEST AND ARE MADE UP OF STRIPPED UNITS. UNITS ARE MADE UP OF STRIPPED UNITS. EMENT FINE GRAINED. STRIPPED UNITS ARE MADE UP OF STRIPPED UNITS. MINERALIZATION IS GENERALLY IN THE UNITS. TYPES

GRAB SAMPLES WERE TAKEN IN THE ROCK TYPES. UNITS ARE MADE TO BE GOLD. BANKS ARE MADE UP OF STRIPPED UNITS. ESPECIALLY WITH ANDESITE.

FLOATS WERE TAKEN AT THE WEST OF STRIPPED AREA AND ALSO AT THE BASE OF THE STRIPPED AREA.

Handwritten signature

1048484

