



31M13NW086 2.3806 CATHARINE

010

March 23, 1981

2.3806

Assessment Report on Mining Claim 532869  
North 1/2, S.W. 1/4, Lot 6, Con.III  
Catharine Township, District of Timiskaming

Introduction

This report contains the results of a ground magnetometer survey carried out on M.C. 532869 on March 17th, 18th, 21st, and 23rd, 1981. Interest in the claim is held equally, by written agreement between S. A. Gamble and B. G. Cook, although the latter is the recorded holder. This report is being submitted for assessment work.

Location and Access (see location map)

The property is reached by traveling north from Englehart on Highway 624, approximately 14 miles, to where a bush road leaves Highway 624 towards the northwest. This road can be followed for approximately 1 1/4 miles by truck to where a bush trail leads directly to the property. During the winter of 1980 - 1981, much lumbering was done in the area, consequently there are now a number of new lumber roads in the area.

History

The property was previously worked on and held by a number of individuals and companies as part of various groups. In 1916 it was part of the " Daley Claims " ( 18066 ). Subsequently it became the " shaft " claim of Ostrom Gold Mines, and later the " shaft " claim of Canora Gold Copper Mines Ltd. ( also Primary Gold Mines Ltd. ) In the early 1970's it was looked at by Moncrieff Uranium Mines Ltd. as part of

March 23, 1981

the J. M. French claims.

Magnetometer Survey

The field work for the magnetometer survey was carried out on March 17th and 18th, 1981 by B. G. Cook, S. A. Gamble, and D. Gamble. An east-west baseline was established on the south boundary of the Mining Claim. A north - south grid was then set up by cutting, flagging, and chaining lines over the claim. Stations were established every 25 meters. Readings were then gathered with a Model MF - 1 Fluxgate Magnetometer ( see attached sheet ).

The resultant map and report were compiled by S. A. Gamble on March 21, and 23, 1981.

Results

The relative magnetic signature varied from -400 gammas to a high of 7900 gammas. Generally the higher magnetic values were obtained on the N. E. half of the claim.

*S. A. Gamble*

S. A. Gamble

October 14, 1981

Appendix to the Assessment Report on Mining Claim 532869  
North 1/2, S.W. 1/4, Lot 6 , Con. III  
Catharine Township, District of Timiskaming

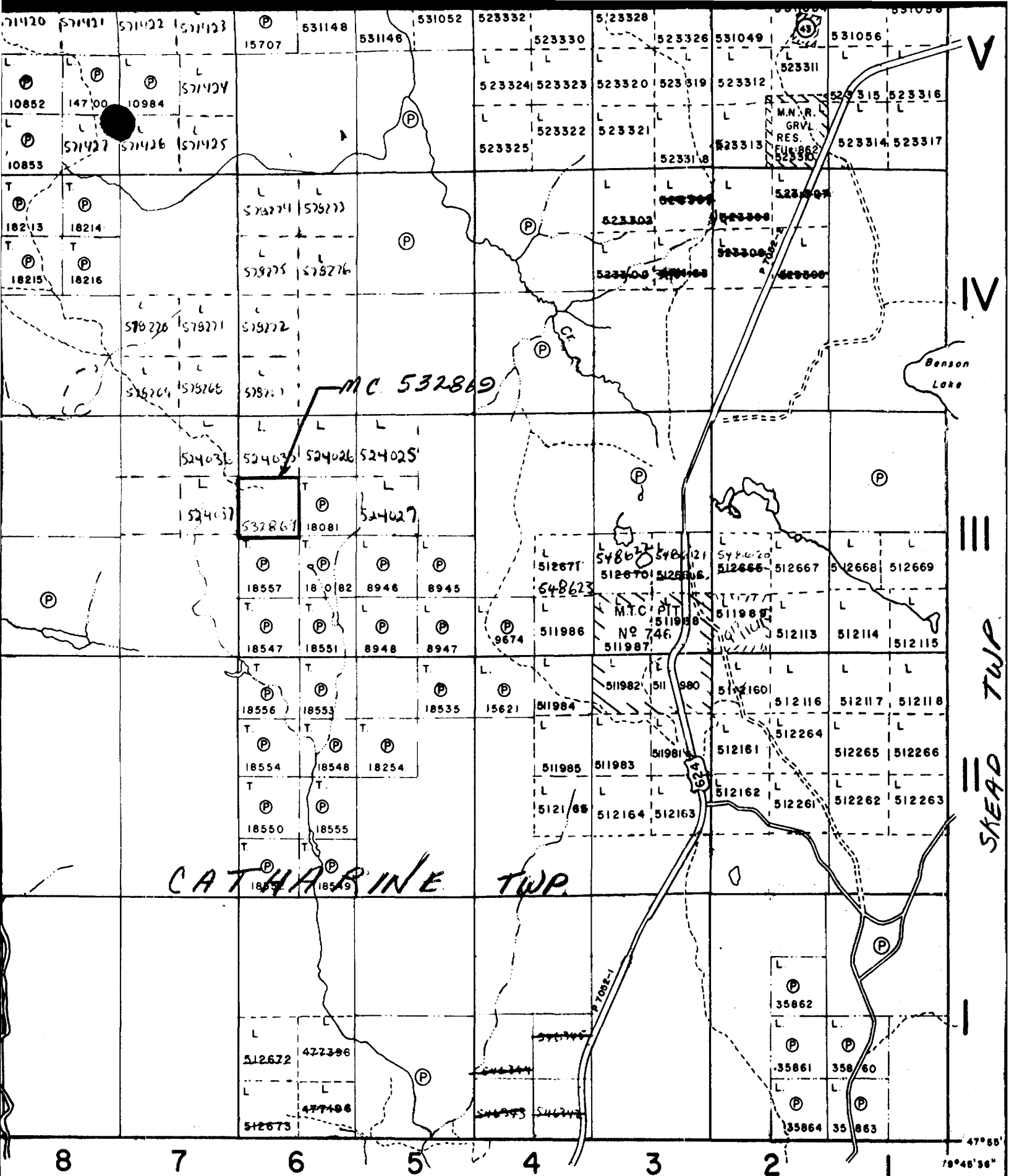
Total number of stations established are as follows:

South limit ( baseline )	19 stations
East limit	18 stations
West limit	11 stations
North limit	11 stations
Interior lines	<u>42 stations</u>
Total	101 stations

Total number of line kilometers cut are as follows:

South limit ( baseline )	.450
East limit	.450
West limit	.275
North limit	.485
Interior lines total	<u>1.04</u>
Total	2.70 line kilometers ( 1.67 line miles)

L.O

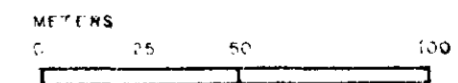
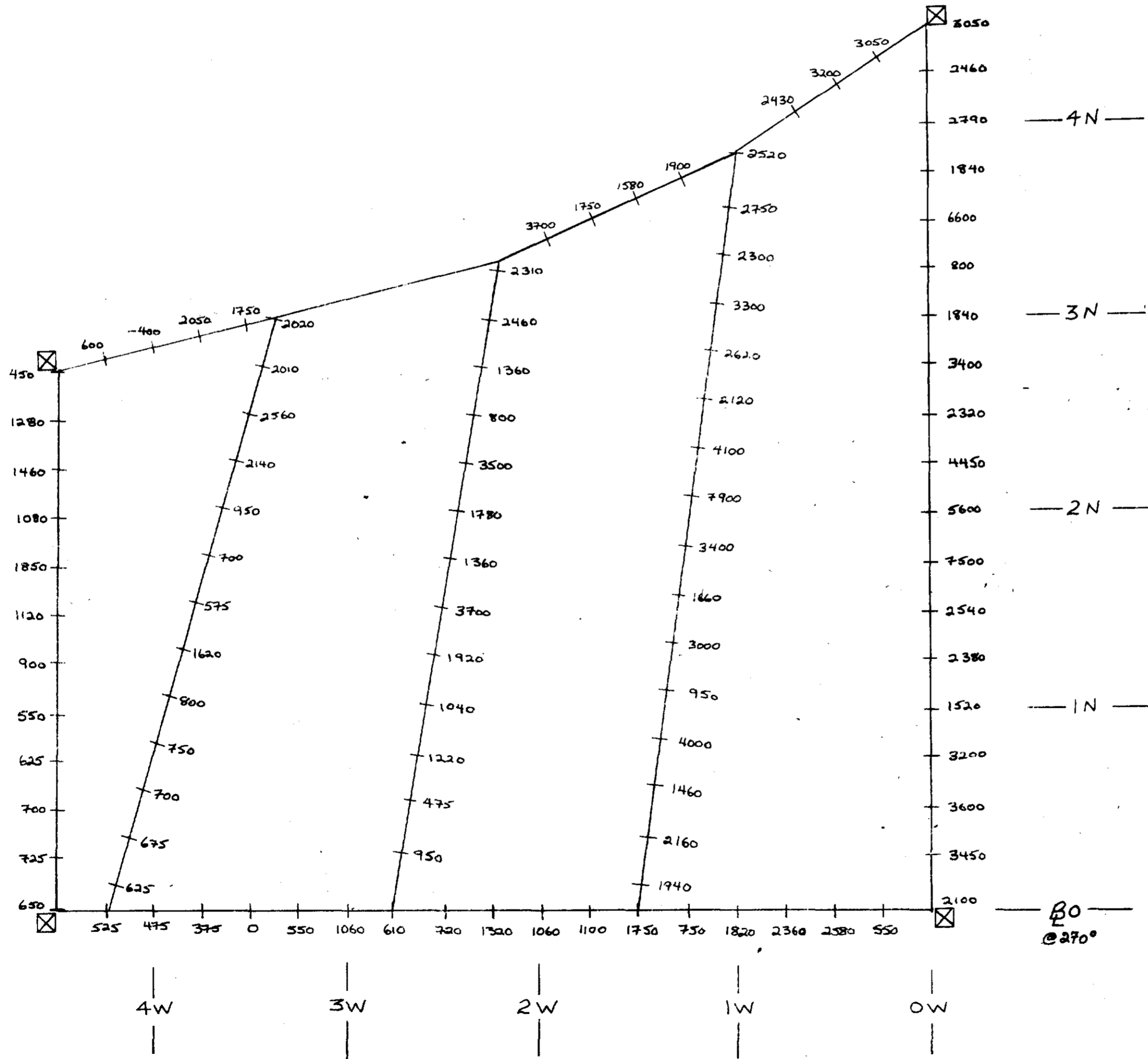


MARTER TP. M. 543

2.3806

GROUND MAGNETOMETER SURVEY  
 MINING CLAIM 532869  
 CATHARINE TOWNSHIP  
 DISTRICT OF TIMISKAMING  
 LARDER LAKE MINING DIVISION

VALUES ONLY



**LEGEND**

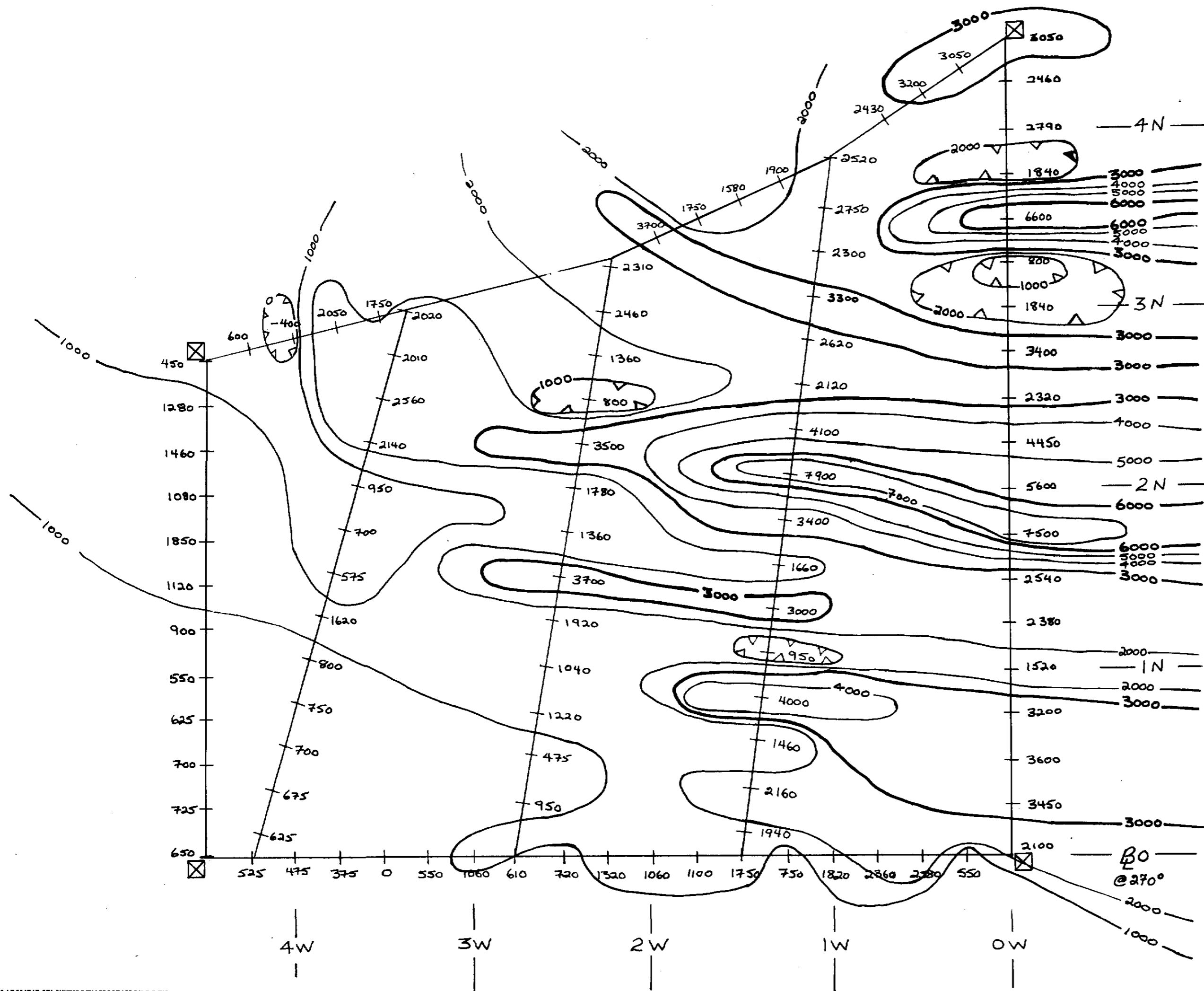
— 1460 — STATUX READINGS IN GAMMAS

⊠ CLAIM POST



GROUND MAGNETOMETER SURVEY  
 MINING CLAIM 532869  
 CATHARINE TOWNSHIP  
 DISTRICT OF TIMISKAMING  
 LARDER LAKE MINING DIVISION

VALUES + CONTOURS



LEGEND

— 1460 — STATION READINGS IN GAMMAS  
 (CONTOUR INTERVAL 1000 GAMMAS)

⊠ CLAIM POST

S. A. GAMBLE

REVISED DATE: OCTOBER 14, 1981



23806 duplicate