



31M13NW0123 17 PACAUD

010

TOWNSHIP: Pacaud

REPORT No.: 17

WORK PERFORMED BY: Hans Laskowski

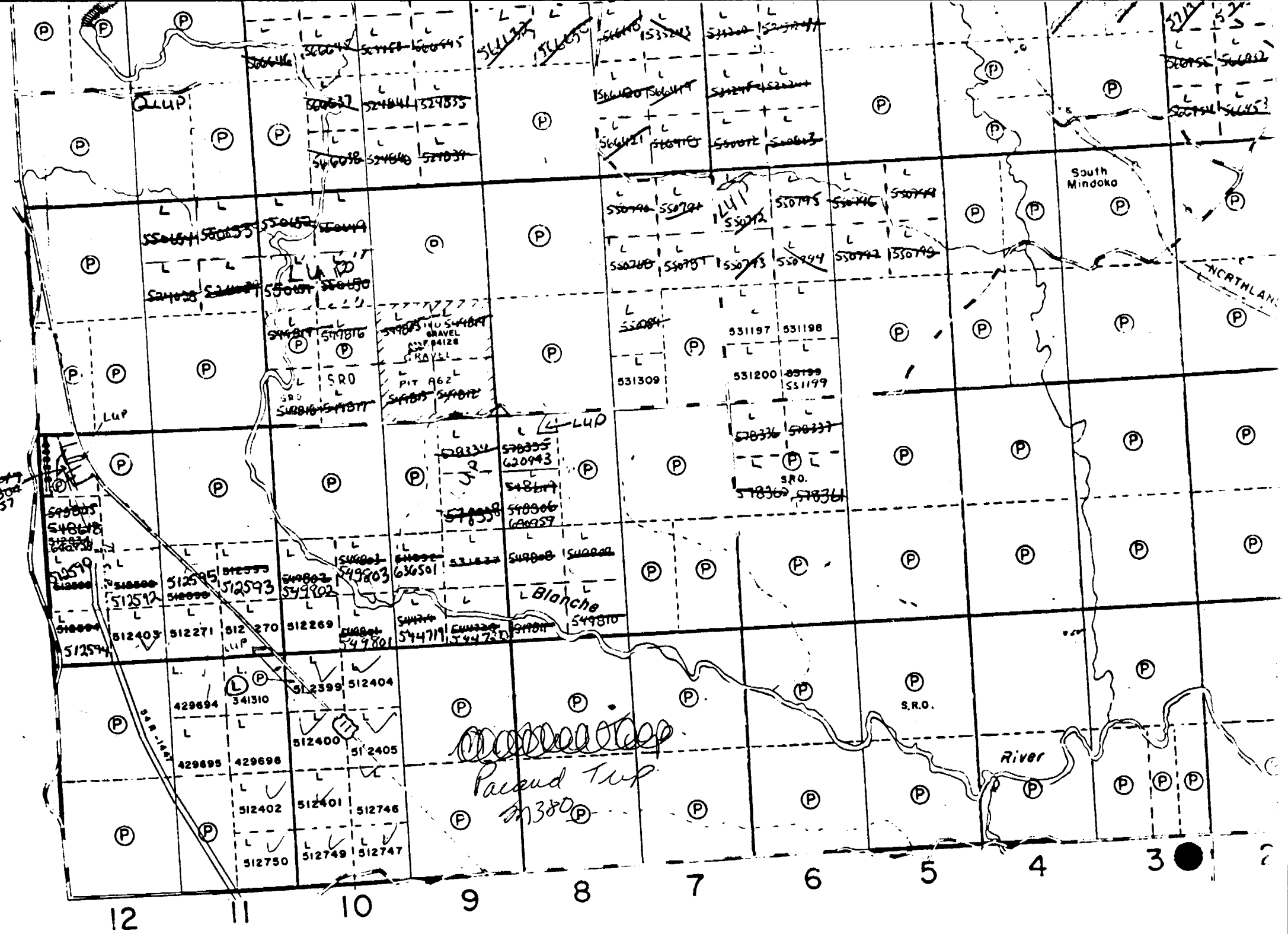
<u>CLAIM No.</u>	<u>HOLE No.</u>	<u>FOOTAGE</u>	<u>DATE</u>	<u>NOTE</u>
L 341310	-	547.0	May/82	(1)

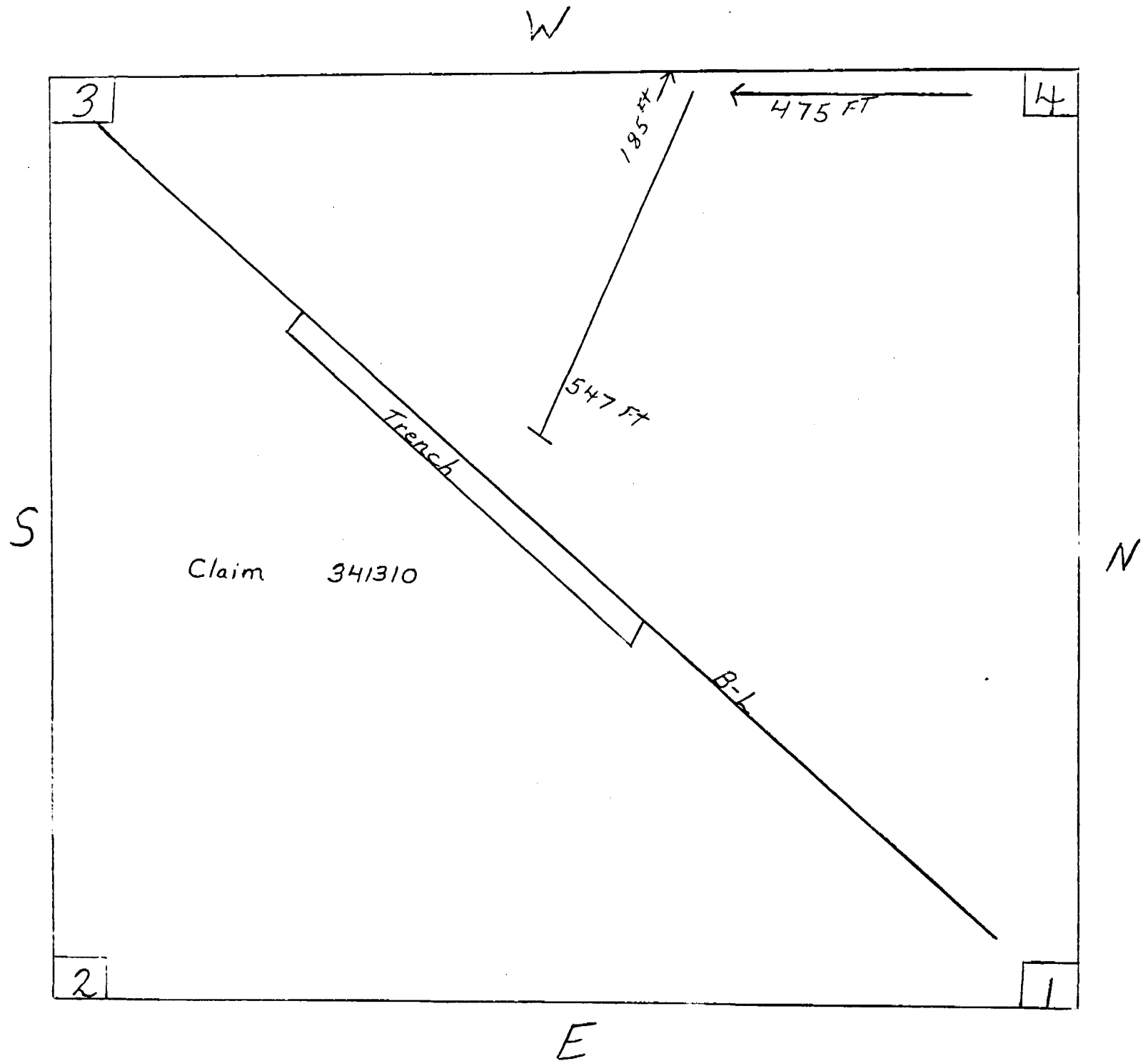
NOTES: (1) #307-82

620010

Pacaid # 307-82

Marquis Twp.





DRILLING COMPANY Hans Laskowski		COLLAR ELEVATION	BEARING OF HOLE FROM TRUE NORTH 145	TOTAL FOOTAGE 547	DIP OF HOLE AT collar 65	LOCATION OF HOLE IN RELATION TO A FIXED POINT ON THE CLAIM 300 ft. West of trench	MAP REFERENCE NO.	CLAIM NO. L 341310
DATE HOLE STARTED May 81	DATE COMPLETED July 82	DATE LOGGED 19 August 82	LOGGED BY David Guindon		ft		LOCATION (Tp., Lot, Con. OR Lot. and Long.) L10-11 C, Pacaud Twp.	PROPERTY NAME Hans Laskowski
EXPLORATION CO., OWNER OR OPTIONEE Hans Laskowski		DATE SUBMITTED	SUBMITTED BY (Signature) <i>David Guindon</i>		ft			
					ft			

FOOTAGE FROM	TO	ROCK TYPE	DESCRIPTION Colour, grain size, texture, minerals, alteration, etc.	PLANAR FEATURE ANGLE	CORE SPECIMEN FOOTAGE +	YOUR SAMPLE NUMBER	SAMPLE FOOTAGE		SAMPLE LENGTH	ASSAYS +		
							FROM	TO				
0	83	Granodiorite	Pinkish in colour - pink feldspar with 0.5 mm anhedral qtz eyes Calcite in fractures Medium grain size									
			54-54.5 barren quartz vein cba=45° 73.5-74.5 coarse grained granodiorite 77 - 82 coarse grained granodiorite									
83	87	Diorite	fine grained dark green - chlorite rich matrix with pinkish feldspars - pervasive carbonate alteration - 1 inch qcv at lower contact									
87	90	Granodiorite	as above									
90	95.5	Diorite	fine grained dark brown - pervasive carbonate alteration. Cut by numerous 0.5mm chlorite seams.									
			94-94.5 Very coarse grained pinkish red granodiorite - 2-3m anhedral qtz and feldspar									
95.5	98	Granodiorite	Coarse grained pink in colour with bluish clear quartz									
98	124	Granodiorite	Medium grained greyish pink in colour									
			99-99.5 very coarse grained pinkish - red granodiorite 119-120 quartz rich grey coloured granodiorite									
124	160	Granodiorite	Coarse grained pink coloured 128 - 2 inch qv - trace of py									
160	201.5	Granodiorite	Coarse grained greyish colour 188.5 - barren qcv 1/2 inch thick cba=45°									

* For features such as foliation, bedding, schistosity, measured from the long axis of the core.



DRILLING COMPANY Hans Laskowski		COLLAR ELEVATION	BEARING OF HOLE FROM TRUE NORTH	TOTAL FOOTAGE	DIP OF HOLE AT collar	LOCATION OF HOLE IN RELATION TO A FIXED POINT ON THE CLAIM	MAP REFERENCE NO.	CLAIM NO.	
DATE HOLE STARTED	DATE COMPLETED	DATE LOGGED	LOGGED BY		ft		LOCATION (Tp., Lot, Con. OR Lat. and Long.)		
EXPLORATION CO., OWNER OR OPTIONEE		DATE SUBMITTED	SUBMITTED BY (Signature)		ft				
					ft		PROPERTY NAME		

FOOTAGE FROM	TO	ROCK TYPE	DESCRIPTION Colour, grain size, texture, minerals, alteration, etc.	PLANAR FEATURE ANGLE *	CORE SPECIMEN FOOTAGE †	YOUR SAMPLE NUMBER	SAMPLE FOOTAGE		SAMPLE LENGTH	ASSAYS †		
							FROM	TO				
201.5	253	Granodiorite	Coarse grained pinkish colour 209.5 - barren qv cba=45°									
253	257.5	Granodiorite	fine grained greyish pink colour - trace of py - upper contact cba = 70° - cut by 5 x 1/2 inch qv									
257.5	300	Granodiorite	Medium grained greyish pink									
300	452	Granodiorite	Reddish medium to coarse grained 318.5-319 Pegmatite? - very coarse grained with 3-5mm qtz & feldspars 382-2 incl. dark grey fine grained diorite dike cab 30° 384-385 - very fine grained green diorite - pervasive carbonate alteration 427.5-428.5 - reddish brown medium grained diorite dike cba=45° - calcite filled fractures									
452	506	Granodiorite	Pinkish to greyish green medium grained 465.5-467 diorite with 1% euhedral py 1-2mm 467- 3 inch qv with white feldspars surrounding 1 1/2 inch long chlorite rich wisp - trace py 485-486 4 - 1/2 inch barren qv 487.5-488 1/2 inch qv cba=70° 5% py 1mm cubes 491-492 1/2 inch qv parallel to core - traces of py along chlorite & calcite rich edge of qv 501-501.5 greyish fine grained zone with 1mm chlorite dots - cut by parallel veinlets of mica cba=45° 505 - qv with 5% 1mm py cubes									

* For features such as foliation, bedding, schistosity, measured from the long axis of the core.

† Additional credit available. See Assessment Work Regular on

