

31M13NW0138 14 MARTER

010

MARTER TOWNSHIP

REPORT 14

This file contains work performed by The Hudson Bay Mines Ltd., on claims:

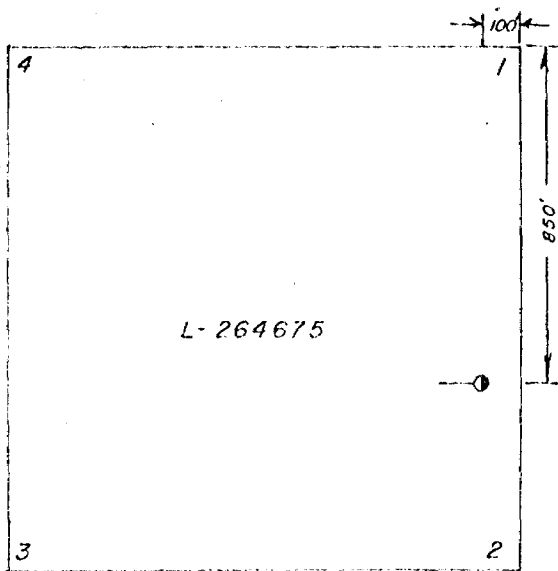
L.264675

Hole #14;

October, 1971

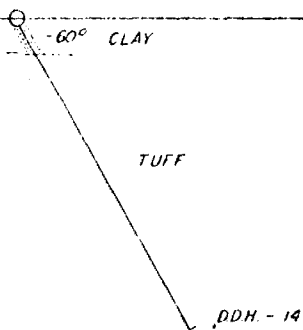
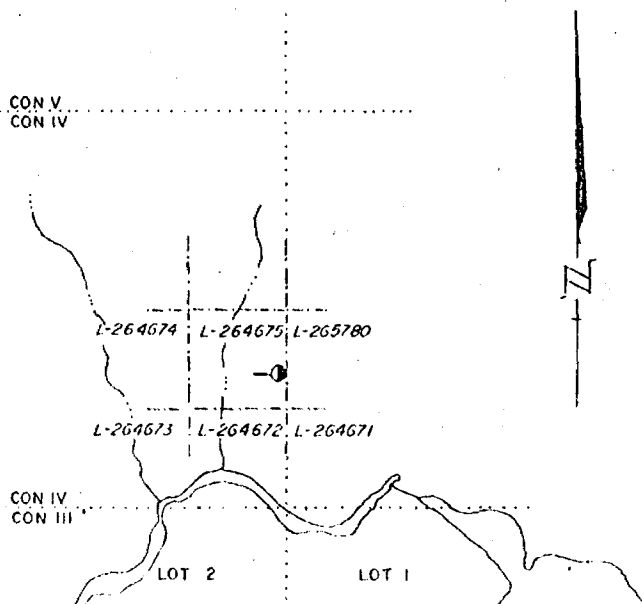
36'

Location of D.D.H.- 14 on claim L-264675



MARTER TWP

SCALE 2" = 1 MILE

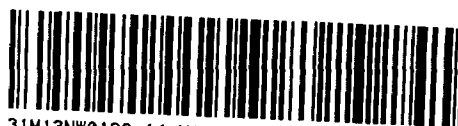


SCALE 1" = 20'

0+00

50'

AREA CODE 416
TELEPHONE 965-1314



31M13NW0138 14 MArTER

900

TORONTO 162. ONT

DEPARTMENT OF MINES AND NORTHERN AFFAIRS
MINES AND TECHNICAL SERVICES BRANCH

March 29th, 1972

The Hudson Bay Mines Ltd.
P.O. Box 700
New Liskeard, Ontario

Attention: Mr. G.A. Stevens

Dear Sir:

Enclosed is a cheque for \$147.93. This amount represents the Department's share of the exploration costs incurred by you while exploring for minerals in Marter Township between the period of October, 1971 and March, 1972.

Yours truly,

A handwritten signature in dark ink, appearing to read "H.G. Matthews".

H.G. Matthews
Chief Accountant

/kc
Enclosure

The Hudson Bay Mines
Limited

HEAD OFFICE - NEW LISKEARD
BOX 700 - ONTARIO

October 22nd, 1971.

The Honourable Leo Bernier, Minister,
Ontario Department of Mines and Northern Affairs,
Parliament Buildings, Queens Park,
Toronto, Ontario.

Dear Mr. Bernier:

RE: EXPLORATION ASSISTANCE PROGRAM
Application By The Hudson Bay Mines Limited,
Box 700, New Liskeard, Ontario.

PROPERTY

The unpatented mining claim group comprises twelve contiguous claims (L-264666 to L-264675, L-265779 and L-265780) recorded in the name of R. T. Hutchinson and held in trust for The Hudson Bay Mines Limited. They are located in north half of north half, concession three and south half of concession four, lots one and two, Marter Township, Larder Lake Mining Division.

MINERAL POTENTIAL

The south half of the property is overlain by Cobalt series sediments, which dip 15° to the southwest. The northeast section consists of intermediate to acid volcanics mainly coarse agglomerate, quite silicious, dipping 60° east. Basic to intermediate volcanics occur at the northwest section of the group. In north-central part of the claims, and within agglomerate, a sulphide showing occurs in banded cherty tuff. The main sulphide is pyrite, but traces of chalcopyrite and sphalerite are also present. To the west and adjacent to this zone the tuff is coarser and contains disseminated chalcopyrite. Since the area is obscured by overburden the extent of this mineralization is not known.

EXPLORATION PROGRAM

In order to investigate the mineralization at depth and also obtain assessment credits, a diamond drill hole approximately 120' in length is proposed to undercut the sulphide showing.

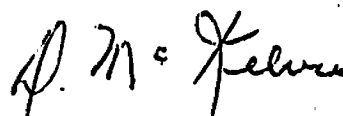
Letter to the Honourable Leo Bernier, Minister
Cont'd.....22/10/71

ANTICIPATED COST

120' at \$10.00 per foot = \$1,200.00.

Yours very truly,

THE HUDSON BAY MINES LIMITED


D. McKelvie,
President.

DMcK/md

Mineral Exploration Assistance Program



Ontario Department of Mines and Northern Affairs
Honourable William G. Davis, Prime Minister
Honourable Leo Bernier, Minister

