



32D04NE0107 11 MCVITTIE

010

Diamond Drilling

Township of McVittie

Report No: 11

Work performed by: Michel Bustræen

Claim No	Hole No	Footage	Date	Note
L 213319	1	249'	June/69	(1) .01/1.0'
		59'	Summer/70	(2)
	<u>308'</u>			
	2	103'	Oct/69	(1)
	3	140'	Summer/70	(2) .02/p.5'
	4	159'	Summer/70	(2)
L 317359	5	102'	Aug/71	(3)
L 103596	6	103'	July/72	(5)
L 319181	7	102'	Sept/72	(4)
		60'	Oct/72	(6)
	10	<u>162'</u> 162.5'	Aug/73	(7)
L 319180	8	125'	July/73	(7)
	9	119'	July/73	(7)

Notes:

- (1) 24/70
- (2) 228/70
- (3) 258/71
- (4) 276/72
- (5) 362/72
- (6) 363/72
- (7) 180/73

DIAMOND DRILL RECORD

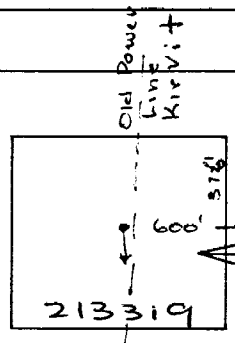
LOGGED BY G. Winse

PROPERTY Mike Bostram's Property - McVittie Township

LATITUDE _____ BEARING OF HOLE S5°W STARTED June 69

DEPARTURE _____ DIP OF HOLE 45 COMPLETED Oct 69

ELEVATION _____ DIP TESTS _____ DEPTH 249.0



D.D.H. No. 1 PAGE 1

CLAIM No. L 213319

DIRECTION AND DISTANCE FROM NE. CLAIM POST

FOOTAGE		DESCRIPTION	SAMPLE No.	FOOTAGE		SAMPLE LENGTH	ASSAY						
FROM	TO			FROM	TO								
0.0	2.0	Casing											
2.0	34.0	Pillowed Basic Lava, massive, med. green-grey, v. f. gr'd, cut by several Q-C and Q-C-chl veins at c.a. 60° with minor associated py. Few hematite-stained slips.											
34.0	42.5	Basic Lava, dark grey, sphenulitic											
42.5	116.0	As 2.0 At 74.0', 2.0' Q-C-chl sheared c.a. 70-90° 101.0-116.0 Massive to slightly sh'd c.a. 50°, with sections up to 1.0' buff brown, carb'd.											
116.0	166.5	Fault zone. low broken up in short lengths, bleached, massive, contains up to 20% grey granular mud, fault gouge. Occasional hematite-stained slips. Barren. 125.0 on, 40% grey-brown granular mud 150.0 as 116.0 Lc. 133.5-134.5, 146.5-149.5											

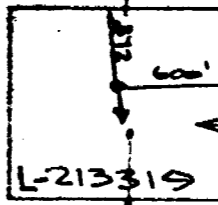
DIAMOND DRILL RECORD

LOGGED BY G. Huise

PROPERTY Mike Bostram's Property - McLittie Twp.

600'
Riser Line to
Kir-Vit

LATITUDE _____ BEARING OF HOLE 35°W STARTED Summer 1970
 DEPARTURE _____ DIP OF HOLE -45° COMPLETED Summer 1970
 ELEVATION _____ DIP TESTS _____ DEPTH 250.0 - 308.0



D.D.H. No. 1 PAGE _____
 Deepening
 CLAIM No. _____
 DIRECTION AND DISTANCE FROM
 NE. CLAIM POST

FOOTAGE		DESCRIPTION	SAMPLE No.	FOOTAGE		SAMPLE LENGTH	ASSAY				
FROM	TO			FROM	TO						
250.0	308.0	Basic volcanic, dark grey-green, massive Few Q and Qc stringers 30 to 60° to core axis Few specks of pyrite locally usually associated with quartz stringers									
	257.5	1 1/2" Q-c-nch 45° to core axis									
	259.0-260.0	Q-c-epidote-nch 30° to core axis									
	302.5-304.5	Q-c-nch 20° to 45° to core axis, traces of pyrite									
	308.0	End of hole									

#228/50 McLittie Twp.
 Mike Bostram

DIAMOND DRILL RECORD

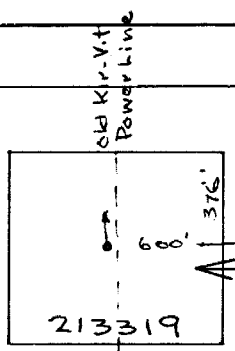
LOGGED BY Guy Kuse

PROPERTY Mike Bushan's Property - McVittie Township

LATITUDE _____ BEARING OF HOLE N10° W STARTED Oct. 69

DEPARTURE _____ DIP OF HOLE 45° COMPLETED Oct. 69

ELEVATION _____ DIP TESTS _____ DEPTH 103.0



D.D.H. No. 2 PAGE 1

CLAIM No. L 213319

DIRECTION AND DISTANCE FROM

NE. CLAIM POST

FOOTAGE		DESCRIPTION	SAMPLE No.	FOOTAGE		SAMPLE LENGTH	ASSAY						
FROM	TO			FROM	TO								
0.0	1.0	Casing											
1.0	103.0	Basal lava. v. fine gr'd, med green-grey, massive, barren, crisscrossed at random angle by few Q-c-chl and Q-c veins, pred. c.a. 60° with minor associated specks of py and hematite At 7.5' 2" wuggy Q-c vein c.a. 45° At 23.5 2.0' dioritic texture At 43.5 1 1/2" broken up core, rusty, limonite-coated fragments At 65.0 1/2" 5% diss'd granular py											
103.0		End of hole											

DIAMOND DRILL RECORD

LOGGED BY G. Weise

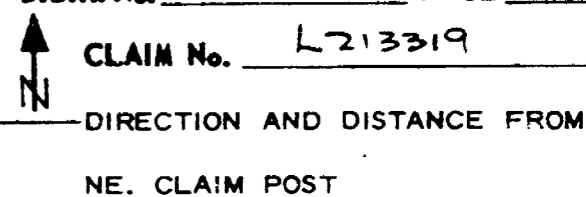
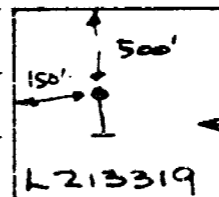
PROPERTY Mike Bostram's Property - McVette Trwp.

D.D.H. No. 4 PAGE 1

LATITUDE _____ BEARING OF HOLE 180° STARTED Summer 1970

DEPARTURE _____ DIP OF HOLE 60° COMPLETED _____

ELEVATION _____ DIP TESTS _____ DEPTH 159.0'



FOOTAGE		DESCRIPTION	SAMPLE No.	FOOTAGE		SAMPLE LENGTH	ASSAY	
FROM	TO			FROM	TO		CU	TR
0.0	10	CASING						
10	152.0	Basic volcanics, dark grey-green, fine grained, massive, spherulitic locally. Cut at random angles by very small Q-C veins, some at 20° to c.a.						
	36.0 - 36.5	Breccia, 60% Q-C, 35° to c.a.						
	29.0 - 29.5	" " " " 25° "						
	49.0 on	Pale grey-green, bleached, carb'd, trace of pyrite locally usually assoc'd with Q and Q-C veins. L.C. 53.5-55.3, 101.5-102.0, 103.0-104.0	2346	78.5	79.0	0.5	TR	
		Rusty slip at 55.3, 78.0, 75.5, 101.5, 103.0						
	82.5 - 83.5	Q-C with 10% epy and 1-2% py, incl 40°	2347	82.5	83.5	1.0	.01	
	99.5 - 100.3	" " " " " "	2348	99.5	100.8	1.3	.02	
	at 105.0	Tr of pyrite						
	at 130.0	Good pyrite over 1 1/2"	2345	130.0	132.5	2.5	.01	
	at 131.5	" " over 2"						
	at 144.0	Two small dykes, 1 1/2" and 6", contacts lost, probably syenite						

3 Post

4 Post

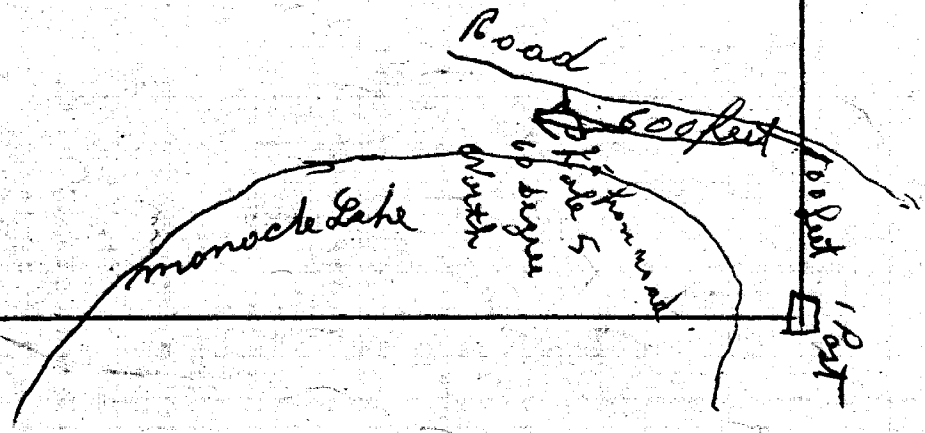
Claim. L 317359

et^c Nettie Township
District of Temiskaming

↑
North

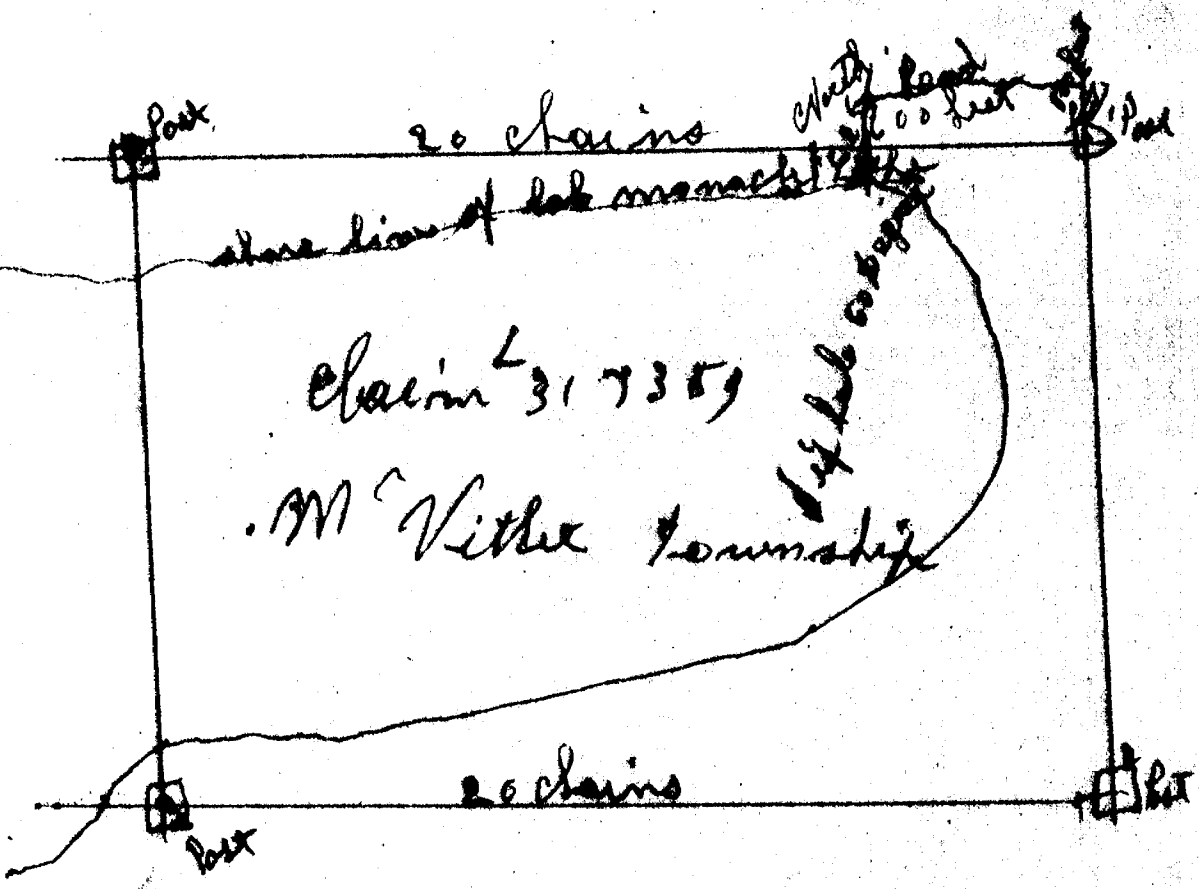
3 Post

1 Post



258/71 McVittie Jp

M. Bustran



Post

20 chains

Cherty land
100 feet

Post

shore line of lake monach

Chain 31735

M^c Viller Township

1/2 of lake or bog

Post

20 chains

Post

Claim
L 314181

Post
1
2
3
4
5
6
7
8
9
10

1 Post
Claim L ~~10359~~
103595

1 Post
1 Post
Claim
L 103596
P.D.H.C.
1 Post
1 Post
1 Post

10 Post
Claim
L 313320

1 Post
Claim
L 103594

1 Post
1 Post
Claim
L 103593

1 Post

1 Post

1 Post
1 Post
1 Post
1 Post

1 Post

1 Post
1 Post

DIAMOND DRILL RECORD

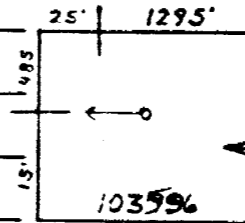
LOGGED BY G. Hinse

PROPERTY Mike Bustream - McVittie Township - Larder Lake Area

LATITUDE _____ BEARING OF HOLE 270° STARTED July 15, 1972

DEPARTURE _____ DIP OF HOLE -60° COMPLETED July 31, 1972

ELEVATION _____ DIP TESTS _____ DEPTH 103.0 feet

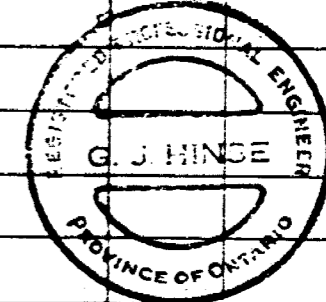


D.D.H. No. # 6 PAGE 1

CLAIM No. 103596 - 5

DIRECTION AND DISTANCE FROM NE. CLAIM POST

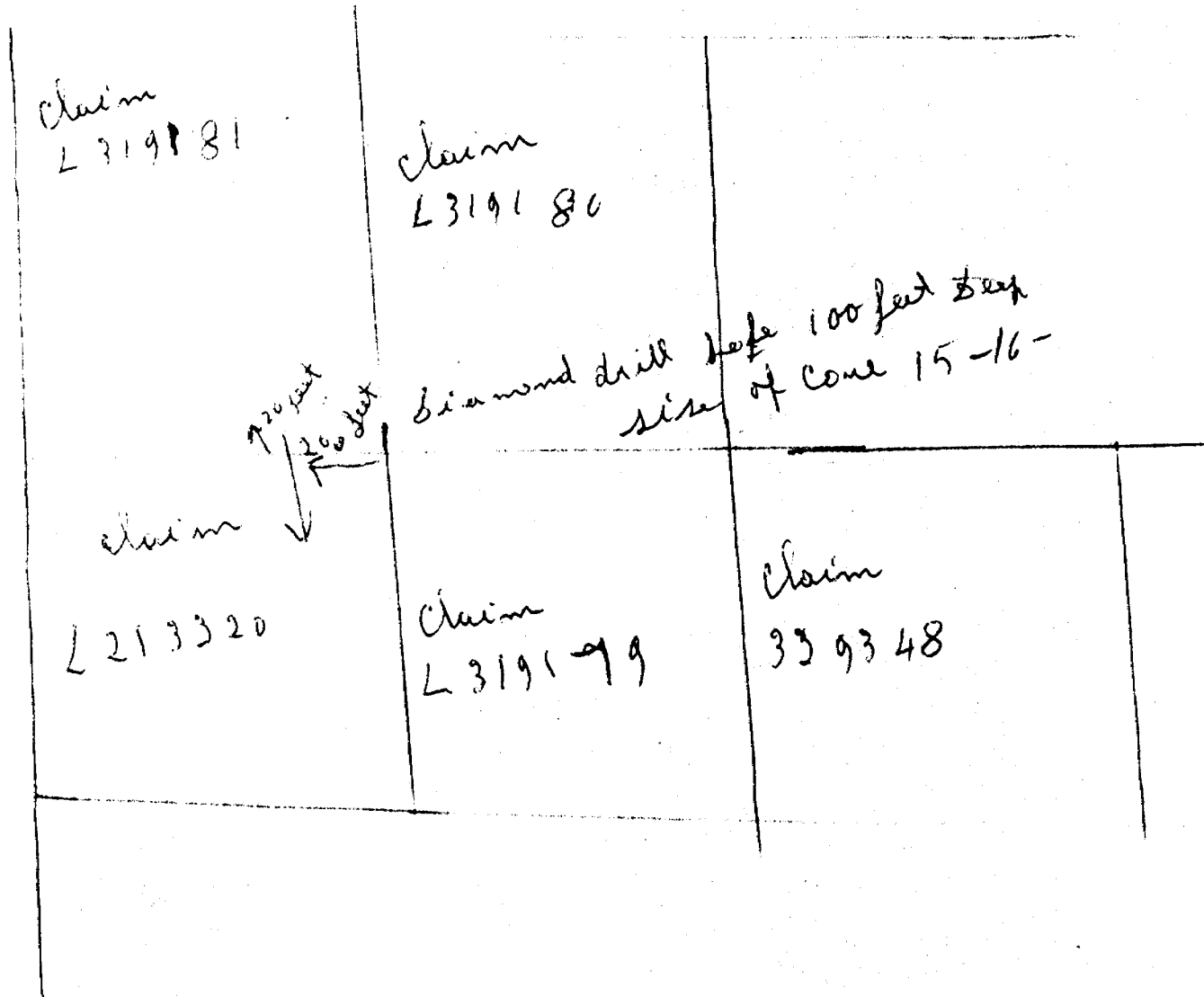
FOOTAGE		DESCRIPTION	SAMPLE No.	FOOTAGE		SAMPLE LENGTH	ASSAY							
FROM	TO			FROM	TO									
0.0	4.0	Casing.												
4.0	103.0	Basic volcanic rock, dark grey-green, fine grained, massive, barren to traces of pyrite locally, unaltered to slightly chloritized and carbonated locally. Several small quartz-calcite veinlets parallel to C.A. and 60° to C.A. 4.0 - 17.0 - core broken up. 84.5 - 93.0 - core broken up, bleached, several quartz-calcite veinlets at 45° to 60° to C.A. and a 4" quartz-calcite vein at 93.0, 45° to C.A. Lost core: 8.5 - 10.0, 13.0 - 15.0, 15.5 - 17.0, 83.0 - 84.5, 85.0 - 87.0. 93.0 - 95.0												
103.0		End of Hole.												



G. Hinse

*# 362/72 McVittie Twp
M. BUSTREAM*

Township of Mc Vittie District of Terrishaming



276/72 Mc Vittie Twp.
Muel Bostraan

DIAMOND DRILL RECORD

LOGGED BY G. Hinse

D.D.H. No. # 7

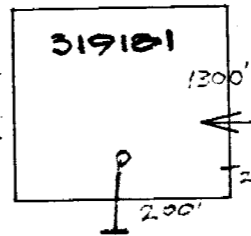
PAGE 1

PROPERTY Mike Bustream - McVittie Township - Larder Lake Area

LATITUDE _____ BEARING OF HOLE 180° STARTED Sept. 5, 1972

DEPARTURE _____ DIP OF HOLE -60° COMPLETED Sept. 22, 1972

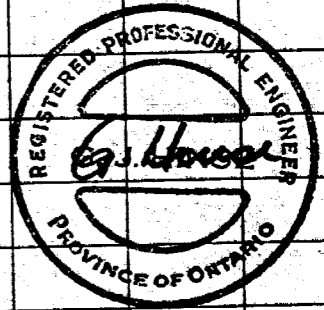
ELEVATION _____ DIP TESTS _____ DEPTH 100.0 feet



CLAIM No. 319181

DIRECTION AND DISTANCE FROM
NE. CLAIM POST

FOOTAGE		DESCRIPTION	SAMPLE No.	FOOTAGE		SAMPLE LENGTH	ASSAY						
FROM	TO			FROM	TO								
0.0	2.0	Casing.											
2.0	100.0	Intermediate volcanic rock, medium grey-green, fine grained, massive, relatively unaltered, barren. Cut by few quartz-calcite veinlets predominantly 30 - 45° to C.A. From 50.0' to 100.0', less than 1% disseminated pyrite and pyrrhotite mostly associated with quartz and quartz calcite veinlets. 75.0 - 100.0 - epidotized locally and brecciated.											
	100.0	End of Hole.											
	102	end of hole on B.											

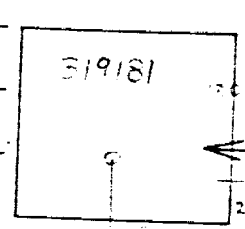


DIAMOND DRILL RECORD

LOGGED BY G. Hinse

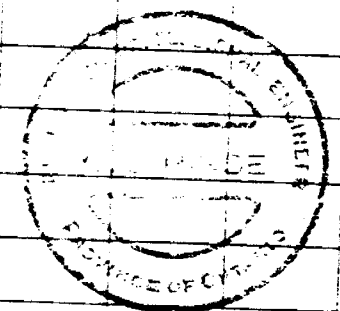
PROPERTY Mike Bustream - McVittie Township - Larder Lake Area

LATITUDE _____ BEARING OF HOLE 180° STARTED October 1972
 DEPARTURE _____ DIP OF HOLE -60° COMPLETED November 1972
 ELEVATION _____ DIP TESTS _____ DEPTH 102.0 - 162.0



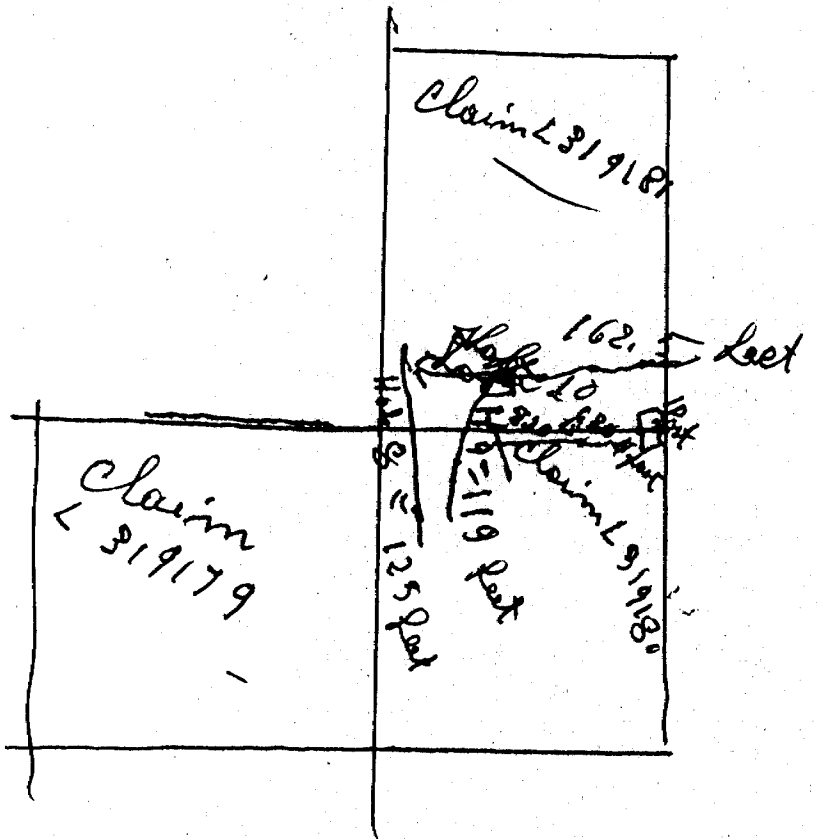
D.D.H. No. # 7 PAGE 1
 CLAIM No. 319181 - 213320
 DIRECTION AND DISTANCE FROM
 NE. CLAIM POST

FOOTAGE		DESCRIPTION	SAMPLE No.	FOOTAGE		SAMPLE LENGTH	ASSAY							
FROM	TO			FROM	TO									
102.0	162.0	Intermediate to basic volcanic rock, medium green, fine grained, hard, bleached, criss-crossed by numerous small quartz-feldspar veinlets and patches. Traces of rutile and chalcopyrite.												
		119.0 - 127.0 - red feldspathization with some of the quartz-feldspar veinlets and patches.												
	162.0	End of Hole.												



G. Hinse

363/72 McVittie Twp
 M Bustream



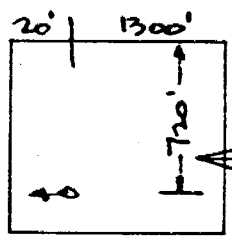
180/73

McVittie Sup

DIAMOND DRILL RECORD

LOGGED BY G. Hinge

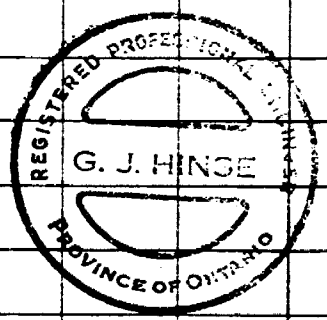
PROPERTY M. Bustran - McVittie Twp



D.D.H. No. 8 PAGE 1
 CLAIM No. 319180
 DIRECTION AND DISTANCE FROM
 NE. CLAIM POST

LATITUDE _____ BEARING OF HOLE NEST STARTED July 1973
 DEPARTURE _____ DIP OF HOLE -50° COMPLETED July 1973
 ELEVATION _____ DIP TESTS _____ DEPTH 125.0'

FOOTAGE		DESCRIPTION	SAMPLE No.	FOOTAGE		SAMPLE LENGTH	ASSAY							
FROM	TO			FROM	TO									
0.0	1.0	CASING												
1.0	31.0	SYENITE, pink grey, fine grained, fractured, traces of pyrite.												
31.0	49.0	BASALT, med grey-green, very fine grained, quartzized, massive, barren.												
49.0	66.0	SYENITE, as 1.0 to 31.0, lighter in color, massive, contacts lost.												
66.0	125.0	BASALT, as 31.0 to 49.0, variegated locally, cut by several quartz and/or carbonate veins and irregular patches, barren.												
		73.5-75.0, 95.0-97.0 lost core												
125.0		End of hole												



DIAMOND DRILL RECORD

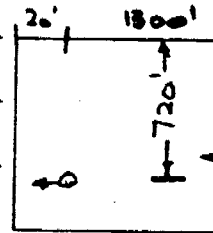
LOGGED BY G. Hinge

PROPERTY M. Bustran - McVittie Trwp.

LATITUDE _____ BEARING OF HOLE N 80° W STARTED JULY 1973

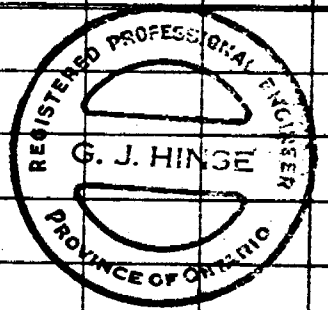
DEPARTURE _____ DIP OF HOLE - 60° COMPLETED JULY 1973

ELEVATION _____ DIP TESTS _____ DEPTH 119.0



D.D.H. No. 9 PAGE 1
 CLAIM No. 319188
 DIRECTION AND DISTANCE FROM
 NE. CLAIM POST

FOOTAGE		DESCRIPTION	SAMPLE No.	FOOTAGE		SAMPLE LENGTH	ASSAY							
FROM	TO			FROM	TO									
0.0	31.5	Syenite, pink grey, very fine grained, fractured locally Traces of pyrite 17.0-18.0, 27.0-28.0 lost core												
31.5	49.5	BASALT, dark grey green, very fine grained, massive, cut by several quartz and/or carbonate veins and irregular patches, granitized locally, barren 37.0-39.5 Diorite dike, contacts 50° to c.a.												
49.5	86.0	SYENITE, pink grey, fine grained, massive, traces of pyrite, cut by several quartz and/or carbonate veins. 45-60° to c.a. Upper contact 60° to c.a., lower contact irregular.												
86.0	119.0	BASALT, as 31.5-49.5 98.5-100.0 lost core.												
119.0		End of hole Hole lost in the south-west corner of the old shaft												



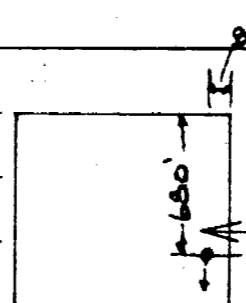
DIAMOND DRILL RECORD

LOGGED BY G. Hinz

D.D.H. No. 10 PAGE 1

CLAIM No. 31918D

DIRECTION AND DISTANCE FROM
NE. CLAIM POST



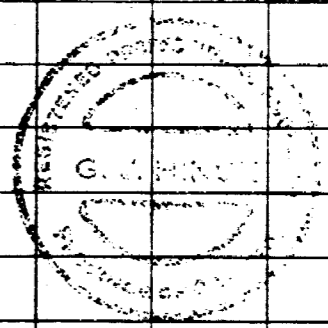
PROPERTY M. Buchraen - McVittie Twp.

LATITUDE _____ BEARING OF HOLE S10°W STARTED Aug. 73

DEPARTURE _____ DIP OF HOLE -60° COMPLETED SEP. 73

ELEVATION _____ DIP TESTS _____ DEPTH 162.5'

FOOTAGE		DESCRIPTION	SAMPLE No.	FOOTAGE		SAMPLE LENGTH	ASSAY							
FROM	TO			FROM	TO									
0.0	4.0	CASING												
4.0	93.0	BASALT, med grey-green, very fine grained, massive, barren, varietic locally, weakly granitized locally. Cut by a few quartz and/or carbonate veinlets and patches 4.0-23.0 several rusty fractures 25.0-38.5 lost core Traces of hematite associated with narrow carbonate veinlets at 52.0, 64.0, 132.5 1" altered syenite dikelet at 91.5, contacts lost												
93.0	94.0	Altered syenite dikes, 1% fine perite, contacts irregular and obscured by carbonate veinlets and patches predominantly 30° to c.a.												
94.0	162.5	BASALT, as 4.0-93.0 159.5-162.5 rusty, oxidized and slightly sheared towards the end of the hole 150.0-152.5 less than 1% hematite associated with												



DIAMOND DRILL RECORD

LOGGED BY _____

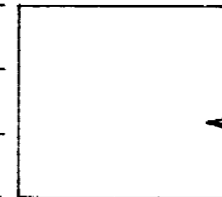
PROPERTY M. Bustraan - McVitie Twp.

D.D.H. No. 10 PAGE 2

LATITUDE _____ BEARING OF HOLE _____ STARTED _____

DEPARTURE _____ DIP OF HOLE _____ COMPLETED _____

ELEVATION _____ DIP TESTS _____ DEPTH _____



CLAIM No. _____

DIRECTION AND DISTANCE FROM

NE. CLAIM POST

FOOTAGE		DESCRIPTION	SAMPLE No.	FOOTAGE		SAMPLE LENGTH	ASSAY						
FROM	TO			FROM	TO								
162.5		End of hole											

