



DIAMOND DRILLING

010

TOWNSHIP: McVITTIE

REPORT No.: 27

WORK PERFORMED BY: LYMAN SMITH

<u>CLAIM No.</u>	<u>HOLE No.</u>	<u>FOOTAGE</u>	<u>DATE</u>	<u>NOTE</u>
L 523449	1	125.0	June/80	(1)
	2	143.0	Aug./80	(1)
		<u>268</u>		

NOTES: (1) #326-80



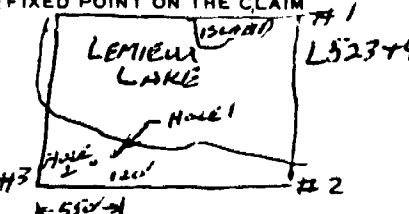
Ontario

THE MINING ACT - MINISTRY OF NATURAL RESOURCES
DIAMOND DRILLING LOG

Start a new page for every new hole, but fill in top portion of form only on first page for each hole.

FILL IN ON EVERY PAGE

HOLE NO. 1 PAGE NO. 1

DRILLING COMPANY GEORGE WALKER		COLLAR ELEVATION 10'	BEARING OF HOLE FROM TRUE NORTH ENE	TOTAL FOOTAGE 128'	DIP OF HOLE AT collar	LOCATION OF HOLE IN RELATION TO A FIXED POINT ON THE CLAIM 	MAP REFERENCE NO.	CLAIM NO. L523449
DATE HOLE STARTED 22 JUNE	DATE COMPLETED 17 AUG	DATE LOGGED 18 AUG	LOGGED BY GARY GRABOWSKI		ft		LOCATION (Tp., Lot, Con. OR Lot. and Long.) MCVITTIE TOWNSHIP	PROPERTY NAME LYMAN SMITH
EXPLORATION CO., OWNER OR OPTIONEE Lyman Smith		DATE SUBMITTED 6 OCT 1980	SUBMITTED BY (Signature) George Walker		ft			
					ft			

FOOTAGE FROM	TO	ROCK TYPE	DESCRIPTION Colour, grain size, texture, minerals, alteration, etc.	PLANAR FEATURE ANGLE	CORE SPECIMEN FOOTAGE +	YOUR SAMPLE NUMBER	SAMPLE FOOTAGE		SAMPLE LENGTH	ASSAYS +	
							FROM	TO			
7'	125'	BASALT	IRON RICH THOLEIITIC (KINDJENIS GROUP) FLOW CUT BY NUMEROUS EPIDOTE CARBONATE STRINGERS UP TO 5MM THICK. MASSIVE - FINE MEDIUM GRAINED (NO FLOW CONTACTS OBSERVED) - CORE IS MAGNETIC THROUGHOUT.		17'	1	0	25'	6"	SUPD	3'-128'
					46'	2	25	50'	5"		
					69'	3	50	75'	6 1/2"		
					53'	4	75	100'	4"		
					119'	5	100	125'	4"		

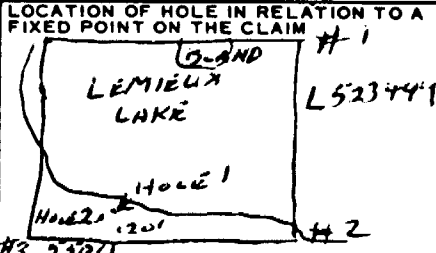
* For features such as foliation, bedding, schistosity, measured from the long axis of the core



Start a new page for every new hole, but fill in top portion of form only on first page for each hole.

FILL IN ON EVERY PAGE

HOLE NO. 2 PAGE NO. 1

DRILLING COMPANY GEORGE WALKER		COLLAR ELEVATION 8'	BEARING OF HOLE FROM TRUE NORTH 55F	TOTAL FOOTAGE 143'	DIP OF HOLE AT collar	LOCATION OF HOLE IN RELATION TO A FIXED POINT ON THE CLAIM 	MAP REFERENCE NO.	CLAIM NO. L523449
DATE HOLE STARTED 31 AUG	DATE COMPLETED 28 SEPT	DATE LOGGED 10 OCT 1980	LOGGED BY GARY GRABOWSKI		ft		LOCATION (Tp., Lot, Con. OR Lot. and Long.) McVITTE TOWNSHIP	PROPERTY NAME LYMAN SMITH
EXPLORATION CO., OWNER OR OPTIONEE Lyman Smith		DATE SUBMITTED 6 OCT 1980	SUBMITTED BY (Signature) <i>George Walker</i>		ft			
				ft				

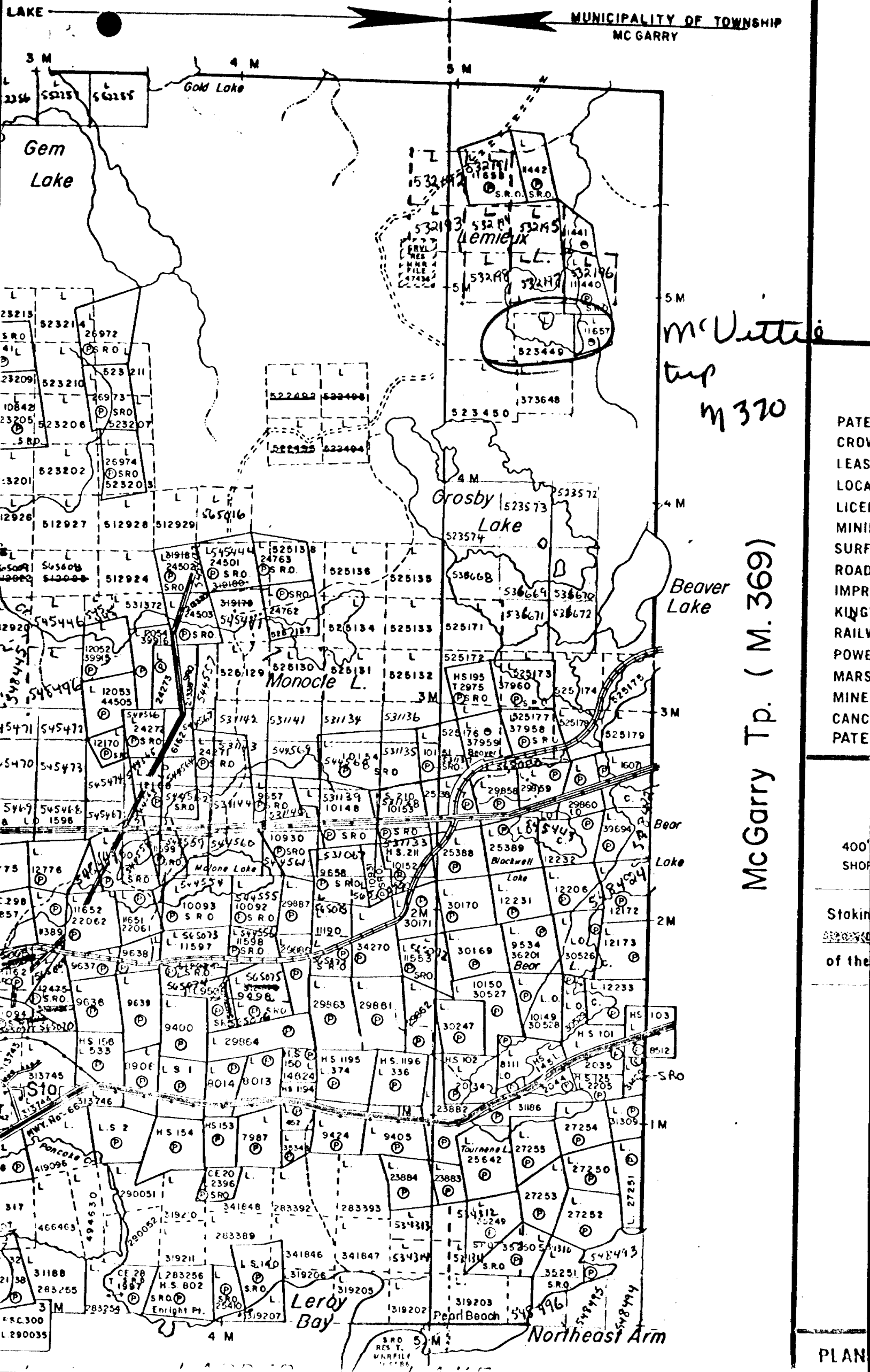
FOOTAGE FROM	TO	ROCK TYPE	DESCRIPTION Colour, grain size, texture, minerals, alteration, etc.	PLANAR FEATURE ANGLE *	CORE SPECIMEN FOOTAGE +	YOUR SAMPLE NUMBER	SAMPLE FOOTAGE		SAMPLE LENGTH	ASSAYS +	
							FROM	TO			
0'	107'	BASALT	IRON THOLEILITE - MAGNETIC CUT BY EPIDOTE STRAINERS AND QUARTZ-CALCITE VEINS UP TO 2 CM WIDE VERY LITTLE MINERALIZATION - AMYGDALOIDAL IN PLACES AMYGDALOIDES AMYGDULES ARE CARBONATE FILLED 100' TO 103' INCREASE IN PYRITE CONTENT OF VOLCANICS TO ABOUT 3%			1	0	25'		SILICA: 100'-133'	
						2	25	50			
						3	50	75		SILICA: 133'-143'	
						4	75	100			
						5	100	125			
						6	125	143			
107'	139'	FELDSPAR PORPHYRY	Euhedral to subhedral FELDSPAR PHENOCRYSTS UP TO 5MM IN A FINE GRAINED REDDISH MATRIX THE PORPHYRY HAS A PERVASIVE WEAK CARBONATE ALTERATION - CONTACTS ARE SHARP - DISSEMINATED PYRITE								
139'	143'	TALC CHLORITE SCHIST	SOFT TALCY - CUT BY FELDSPAR PORPHYRY OFFSHOOTS, FROM ABOVE - 8 CM WIDE AT 141', 5 CM WIDE AT 142' AND 3 CM WIDE AT 143'								

* For features such as foliation, bedding, schistosity, measured from the long axis of the core.

+ Additional credit available. See Assessment Work Regulations.

(M. 357)

MUNICIPALITY OF TOWNSHIP
MC GARRY



McVittie
map
M 370

McGarry Tp. (M. 369)

PATE
CROW
LEAS
LOCA
LICEN
MINI
SURF
ROAD
IMPR
KING
RAILW
POWE
MARS
MINE
CANC
PATE

400'
SHOP
Stakin
of the

PLAN