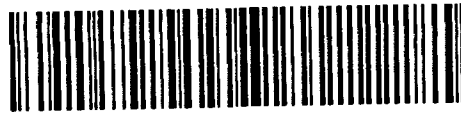


DIAMOND DRILLING



32D04NW0137 19 GAUTHIER

010

TOWNSHIP: Gauthier

REPORT NO.: 19

WORK PERFORMED BY: M. Leahy & C. Forbes

<u>CLAIM No.</u>	<u>HOLE No.</u>	<u>FOOTAGE</u>	<u>DATE</u>	<u>NOTE</u>
L 566409	D-81-1	104.0	Sept.81	(1)

NOTES: (1) #452-81

**Diamond  
 Drilling  
 Log**

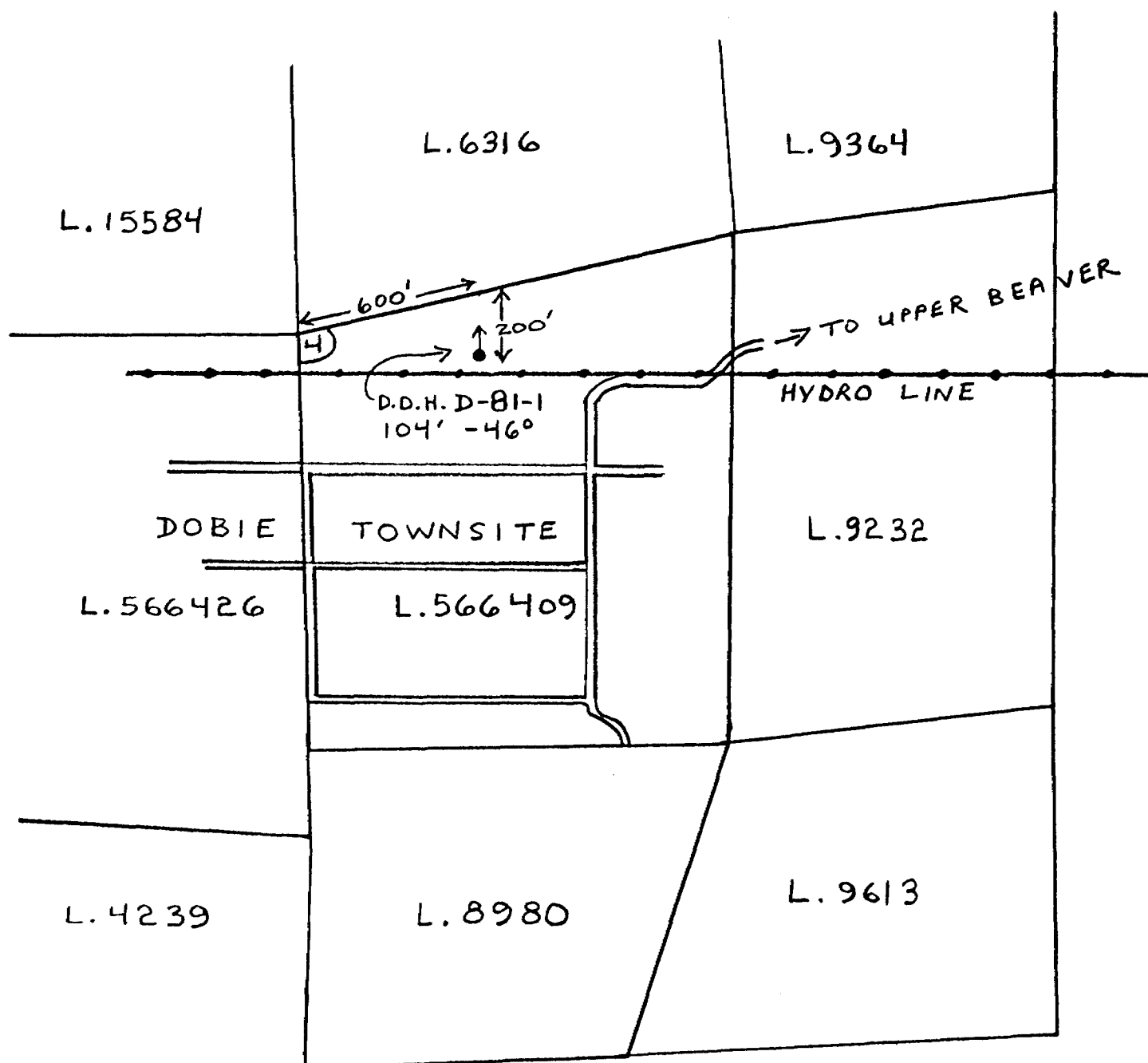
Fill in on every page

Hole No. **D-31-1** Page No. **1**

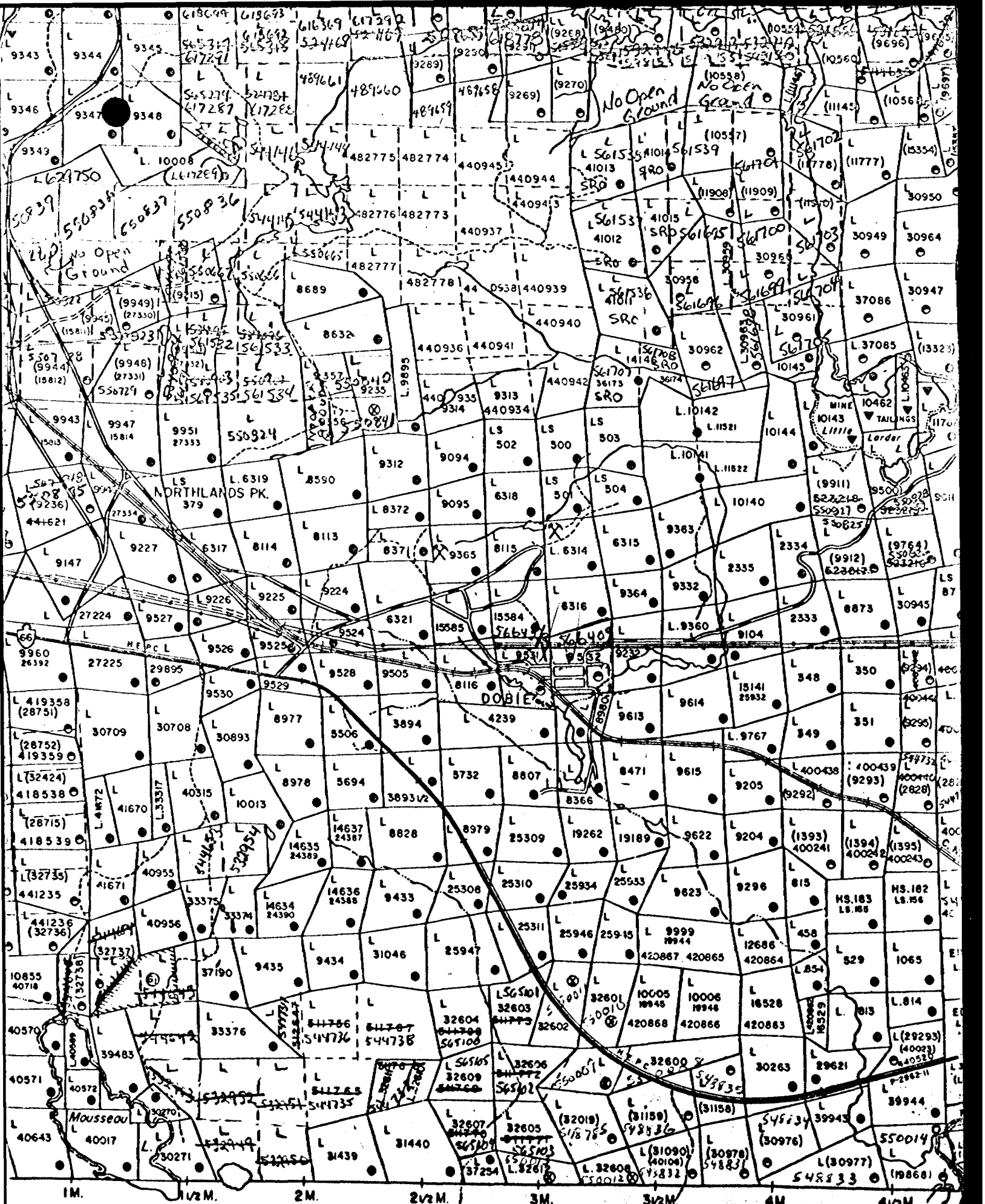
Drilling Company <b>FORBES &amp; LEAHY</b>		Collar Elevation	Bearing of hole from true North <b>0°</b>	Total Footage <b>104'</b>	Dip of Hole at Collar <b>46°</b>	Location of hole in relation to a fixed point on the claim. <b>600' EAST and 200' SOUTH of #4 post of L-566409</b>	Map Reference No. <b>M-350</b>	Claim No. <b>L-566409</b>
Date Hole Started <b>SEPT. 11/81</b>	Date Completed <b>SEPT. 14/81</b>	Date Logged <b>SEPT. 15/81</b>	Logged by <b>C. FORBES</b>		Ft.		Location (Twp., Lot, Con. or Lat. and Long.) <b>GAUTHIER TWP.</b>	Property Name <b>TOBICO GOLD</b>
Exploration Co., Owner or Optionee <b>M. LEAHY C. FORBES</b>		Date Submitted <b>SEPT. 30/81</b>	Submitted by (Signature) <b>Carl P. Forbes</b>		Ft.			
				Ft.				

Footage		Rock Type	Description <small>Colour, grain size, texture, minerals, alteration, etc.</small>	Planar Feature Angle *	Core Specimen Footage †	Your Sample No.	Sample Footage		Sample Length	Assays †		
From	To						From	To				
0	6'9"	CASING										
6'9"	104'	SYENITE	-PORPHYRITIC IN PLACES -HAIRLINE QTZ. CARB. FRACTURES THROUGHOUT -SEVERAL QTZ. STRINGERS UP TO 1" -PYRITIZED - UP TO 10% BETWEEN 34' AND 60'.									

LOCATION SKETCH  
 SHOWING DIAMOND DRILL HOLE D-81-1  
 GAUTHIER TOWNSHIP - LARDER LAKE MINING DIVISION  
 SCALE : 1" = 500'



BY C. P. FORBES  
 SEPT. 28 / 81



McELROY TR. M. 366

Gauthier twp # 452-81

17350