



32D04NW0158 10 GAUTHIER

010

Diamond Drilling

Township of GAUTHIER

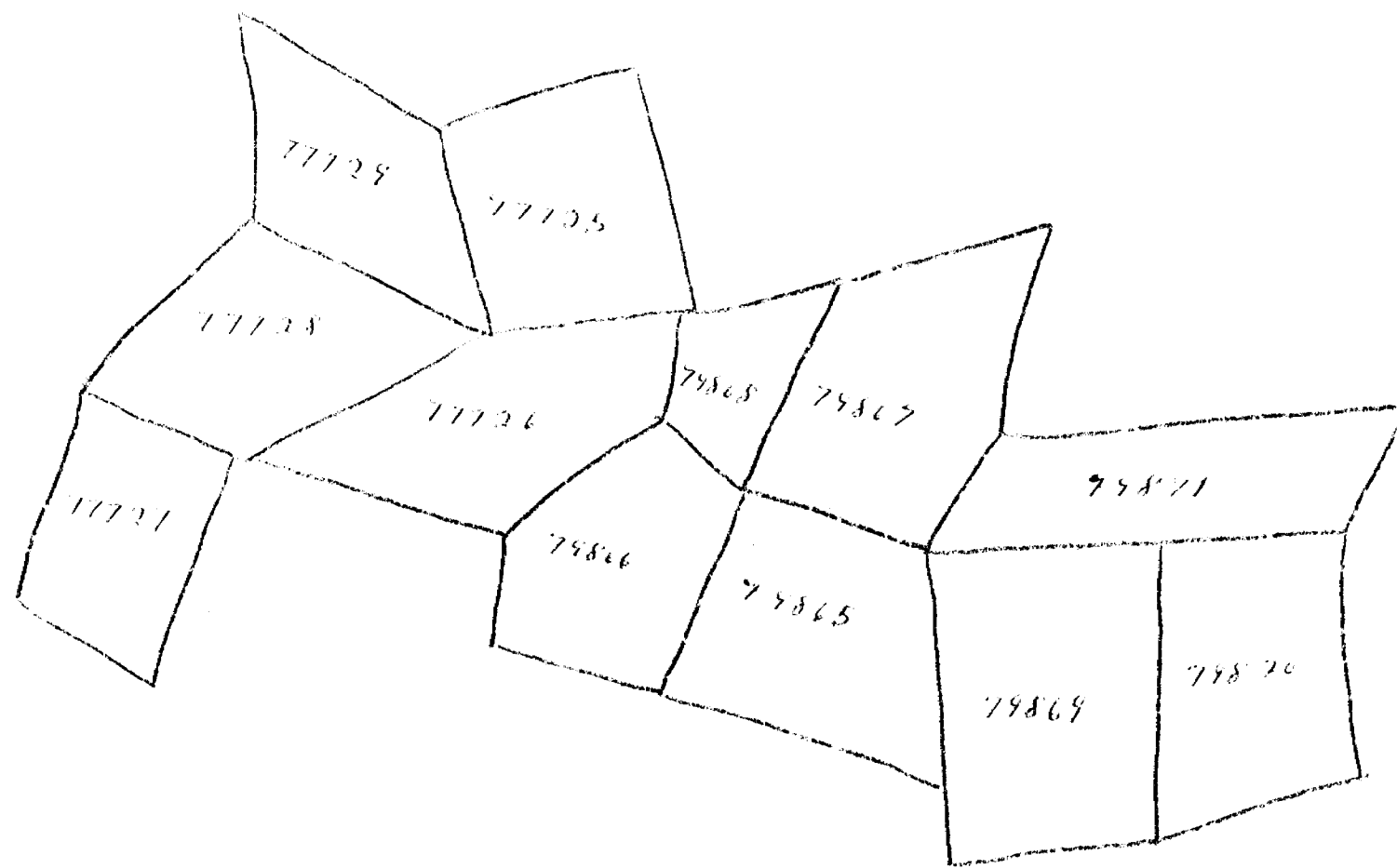
Report No: 10

Work performed by: T.C. Taylor

Claim No	Hole No	Footage	Date	Note
L. 77726	1	336'		
	2	125'		
	3	149'		
	4	360'		
	5	245'		
	8	173'	Nov/67	
	9	142'	Mar/68	
	9 (Reset)	329'		
	10	236'		
	L. 79865	6	148.6'	
L. 79870	7	206'		
		<u>2449.6</u>		

Notes:

N.



S

CANTON TOWNSHIP

BATHILLER TOWNSHIP

NO. 1 HOLE	- 85°	20° N. of E.	to 331 FT.
NO. 2 HOLE	- 65°	55° N. of E.	to 135 FT.
NO. 3 HOLE	- 90°		to 144 FT.
NO. 4 HOLE	- 63°	S.W.	to 216 FT.

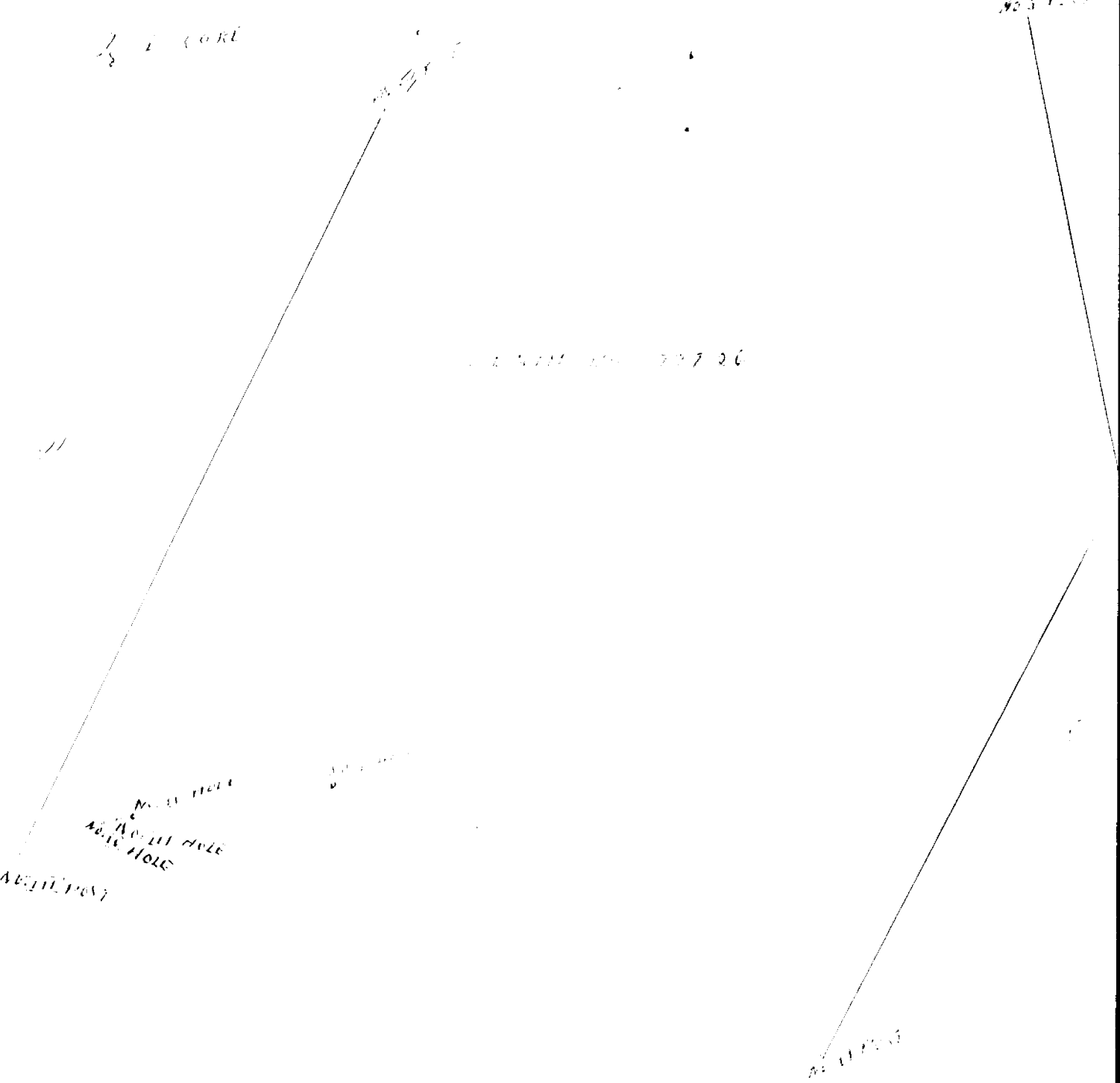
1/2 CORE

NO. 5 HOLE

2 1/2 HOLE TO 727 20

NO. 1 HOLE
 2700 FT. DEEP
 3700 FT. DEEP
 4700 FT. DEEP

NO. 6 HOLE



CORE LOG

HOLE

SANDPIPE

DEPTH

TO SURFACE

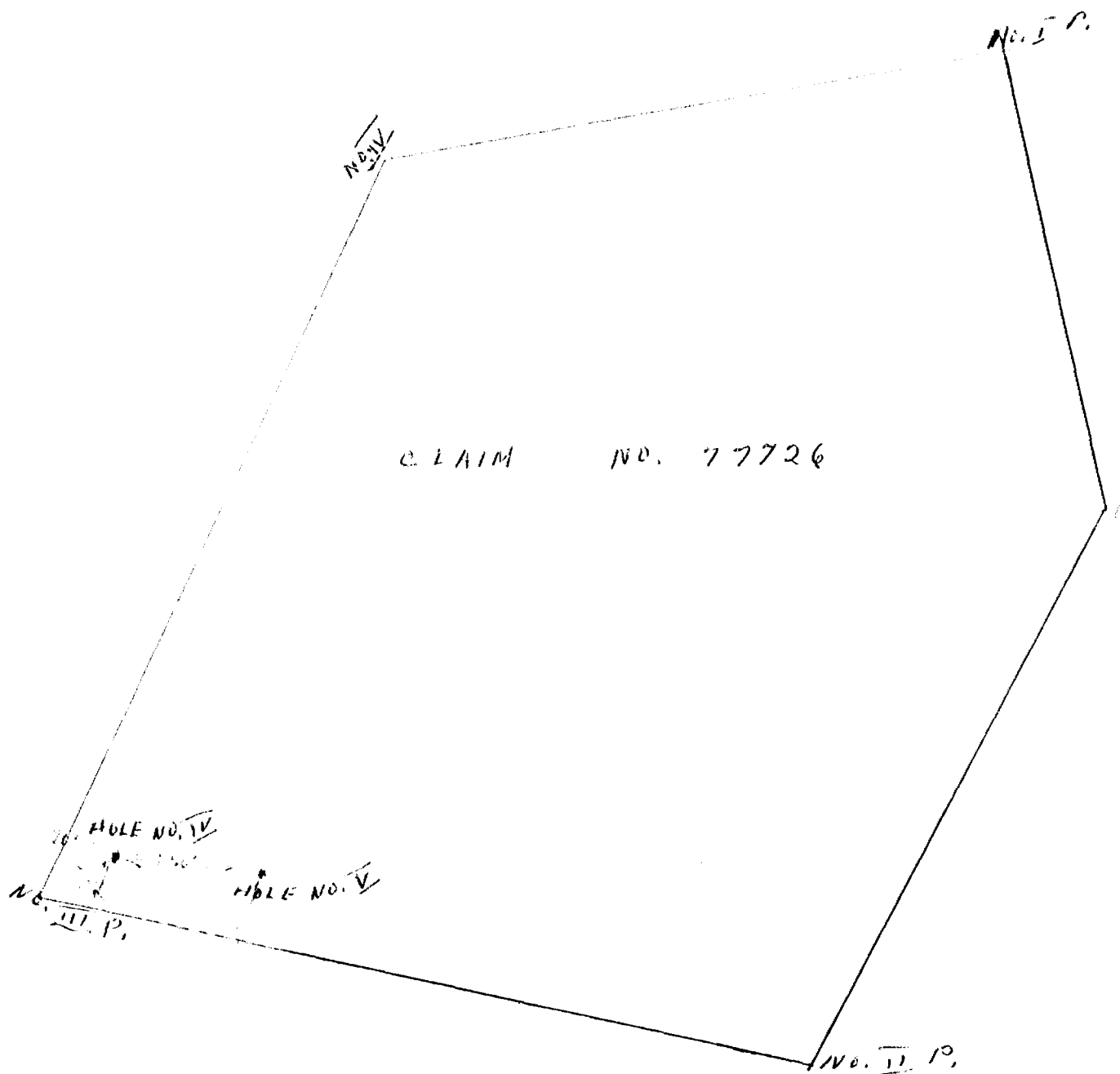
DESCRIPTION OF CORE

OF HOLE

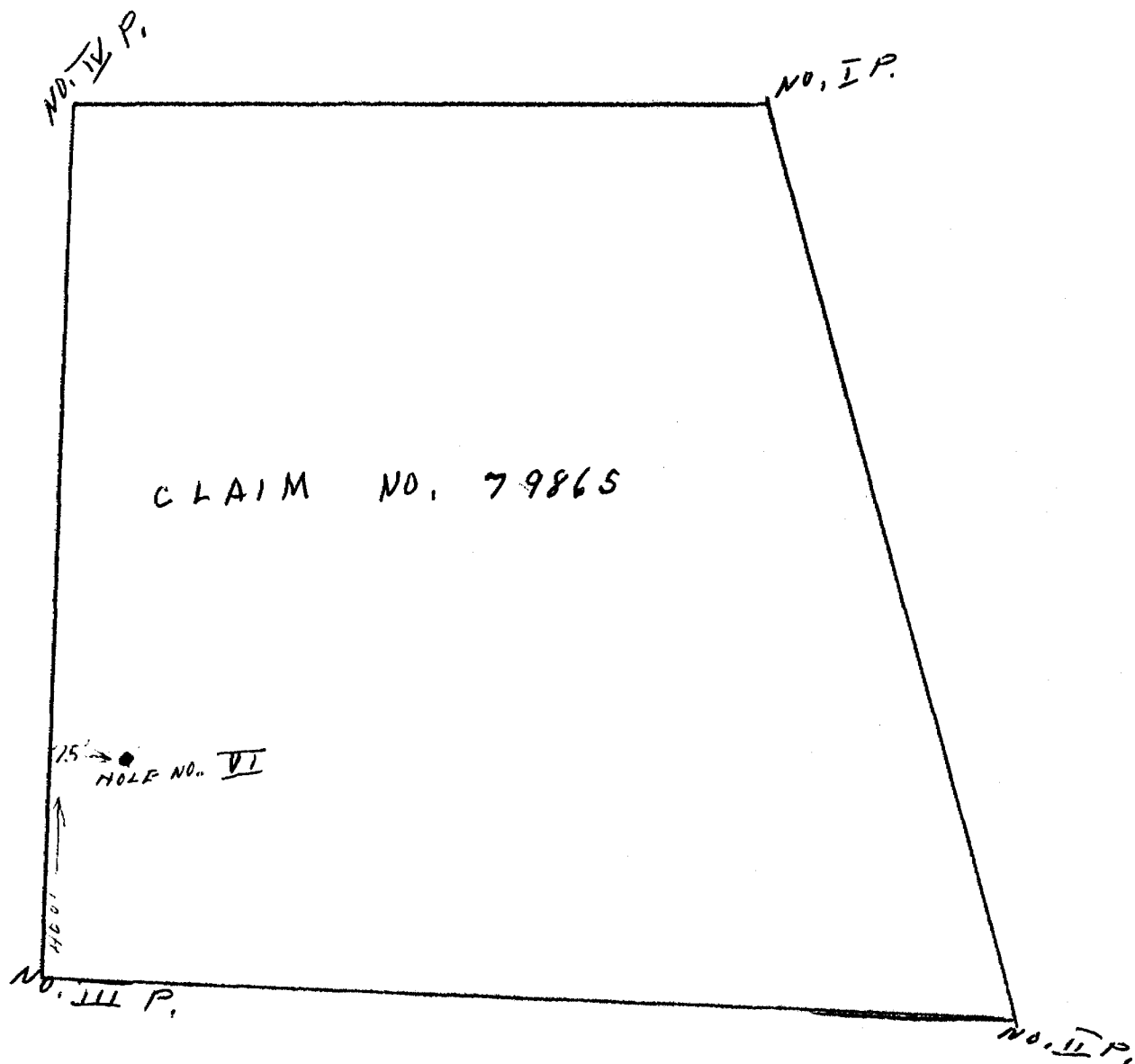
- | | | | |
|-----|--------|---|----------|
| I | 45 FT. | CARBONATE TUFF, A FEW QUARTZ STRINGERS, VERY LITTLE SHOWING OF MINERAL. THE LAST FEW FEET WAS BADLY SOFT & BLOCKY, VERY BARREN. | - 336 |
| II | 60 FT. | MOSTLY CARBONATE TUFF, WITH A 10 FT. SECTION FROM 90 FT. TO 100 FT. OF QUARTZ STRINGERS, VERY LITTLE MINERAL, BLOCKY & VERY SOFT & CHALKY NEAR THE END OF THE HOLE. | - 105-11 |
| III | 63 FT. | THE CORE WAS BADLY BROKEN THE FIRST 25 FT. WITH A FEW BARREN QUARTZ STRINGERS THE REMAINDER OF HOLE WAS CARBONATE TUFF. | |
| IV | 83 FT. | MOSTLY CARBONATE TUFF, SLIGHTLY MINERALIZED IN A FEW PLACES. | - 306 |

Mrs. C. Taylor

NO. IV HOLE - 63° - S.W FROM 300 TO 360 FT. - 34 FT.
NO. V HOLE - 50° - 15° E. OF N. FROM 0 TO 245 FT. - 245 "



HOLE NO. VI - 76° - 30' N. ^W FROM 0 TO 148.6 FT.



HOLE NO. VII - 45° - 20° E 1/4 N. FROM 0 TO 206 FT.

NO. IV P.

NO. I P.

CLAIM NO. 79870

HOLE NO. VII

• 8 CHAINS →

NO. II P.

NO. III P.

CORE LOG

HOLE NO. IV FROM 306' TO 360'

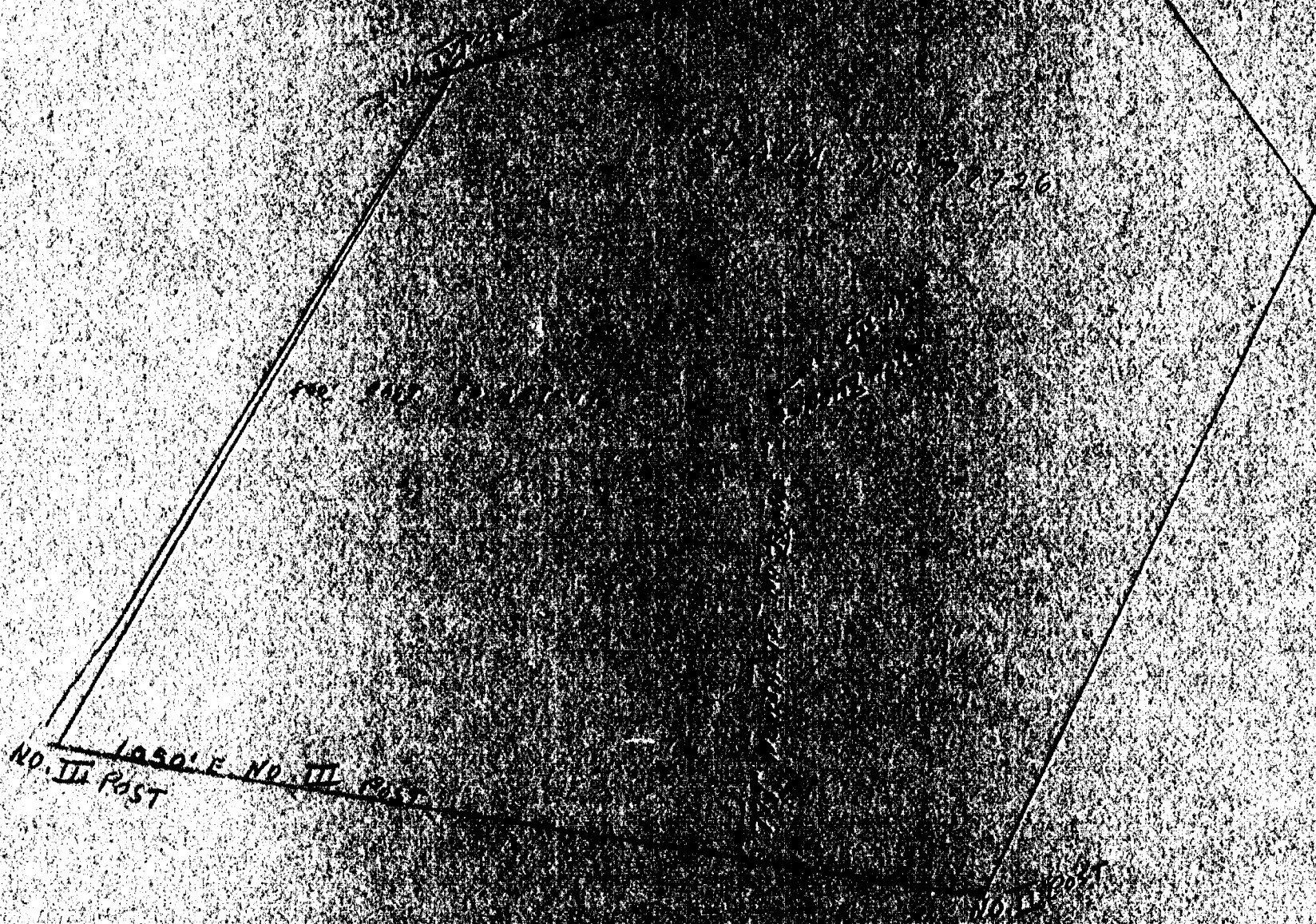
CORE QUITE BARREN, A FEW QUARTZ & CALCITE STRINGERS, SOME VISABLE IRON IN PLACES, OF NO VALUE.

HOLE NO. V FROM 0 TO 245' PUT DOWN 74' OF CASING TO BED ROCK, CORE IS MOSTLY OF CARBONATE TUFF STRUCTURE, WITH SOME RUSTY SCHIST SEAMS, A LITTLE VISABLE MINERAL IN PLACES, SOME BROKEN UP GROUND WITH A FEW STRINGERS OF CALCITE & QUARTZ, QUITE BARREN NEAR END OF HOLE,

HOLE NO. VI FROM 0 TO 148.6' PUT DOWN 132' OF CASING TO BED ROCK, CORE IS MOSTLY DARK GREY CARBONATE, WITH SOME LIGHT COLORED STRINGERS OF SOFTER NATURE. ROCK BADLY BROKEN & CAVING, HAD TO CEMENT HOLE IN ORDER TO DRILL DEEPER AT A LATER DATE.

HOLE NO. VII FROM 0 TO 266'. 15 FT. OF CASING TO BED ROCK, CORE AT BEGINNING OF HOLE OF CARBONATE TUFF NATURE, QUITE SCHISTED IN PLACES, RUSTY, VERY LITTLE VISABLE MINERAL, SOME IRON, QUITE BARREN TOWARD END OF HOLE.

NO. IX - 45° N. 15' W.
CASINGS LEFT IN HOLES



1050' E NO. III EAST

NO. VIII

NO. IV EAST



HOLE No. 8 CLAIM NO 77726 Page

FOOTAGE	GEOLOGY
0-12.0	Casing
12.0-173	to Pink - salmon cast frag sandstone altered shined at 30° to 40° to core thin - locally fragment. C appearance with pinkish ^{frag} cherty quartz 14.5-16.0 ground core. 18.0-18.5 " " From 50' granular appearance with numerous qtz grains highly shined ground from 55' with some lost core 5.60 5.0-8.4 greenish altered siliceous granular appearance - fairly massive from 8.0-9.2 pale with cherty siliceous grains and fragments 9.2-10.3 as 6.0-8.4 with large cherty fragments @ 10.2-3 10.2- pale buff colored shined with cherty patches 5.110 cherty fragments in softer matrix gray quartz 13.6-13.7 greenish altered from 15.8 17.0 END OF HOLE

HOLE No. 8 PAGE 1 ASSAYS

REMARKS	CORE			SLUDGE	
	WIDTH	NUMBER	VALUE	NUMBER	VALUE
met. tal. dyalite					
Commenced drilling Nov. 11, 1867					
Completed Mar. 27, 1868					
J. Taylor					

HOLE No.

Page

9
CLAIM NO. 77726

FOOTAGE	GEOLOGY
0-180	Casing
180-	Acid fragmental - tuff
	with short sphyalite
	bands
	pale grey-buff seriate
	altered -
	sheared at 35° to 55° to
	core axis
	locally coarse arkosic
	texture with generally
	small (1/4") sheared angular
	quartz and other fragments
	scattered dark pyritic
	patches
	22-24 rusty quartz zone
	with "32" mud seam @
	40° to core axis
	92-93 white quartz
	shearing locally flatter
142-	from 100' and crenulated
142-	END OF HOLE

HOLE No. 9

LEVEL _____

LOCATION _____

BEARING South @ -45°

DEPTH 142' EXT
N E

CO-ORDINATES _____

ELEVATION _____

START ~~11/1/67~~ FINISH _____

START 2/22/68 FINISH 2/22/68

TRO-PARI SURVEY

ACID TEST

Depth	Mag. Brg.	Dip	Depth	Dip
_____	_____	_____	_____	_____
_____	_____	_____	_____	_____
_____	_____	_____	_____	_____
_____	_____	_____	_____	_____
_____	_____	_____	_____	_____
_____	_____	_____	_____	_____
_____	_____	_____	_____	_____
_____	_____	_____	_____	_____
_____	_____	_____	_____	_____
_____	_____	_____	_____	_____

SPECIMENS

PLOTTED

Plan

Geol

100 Sc.

Long

50 Sc. x S.

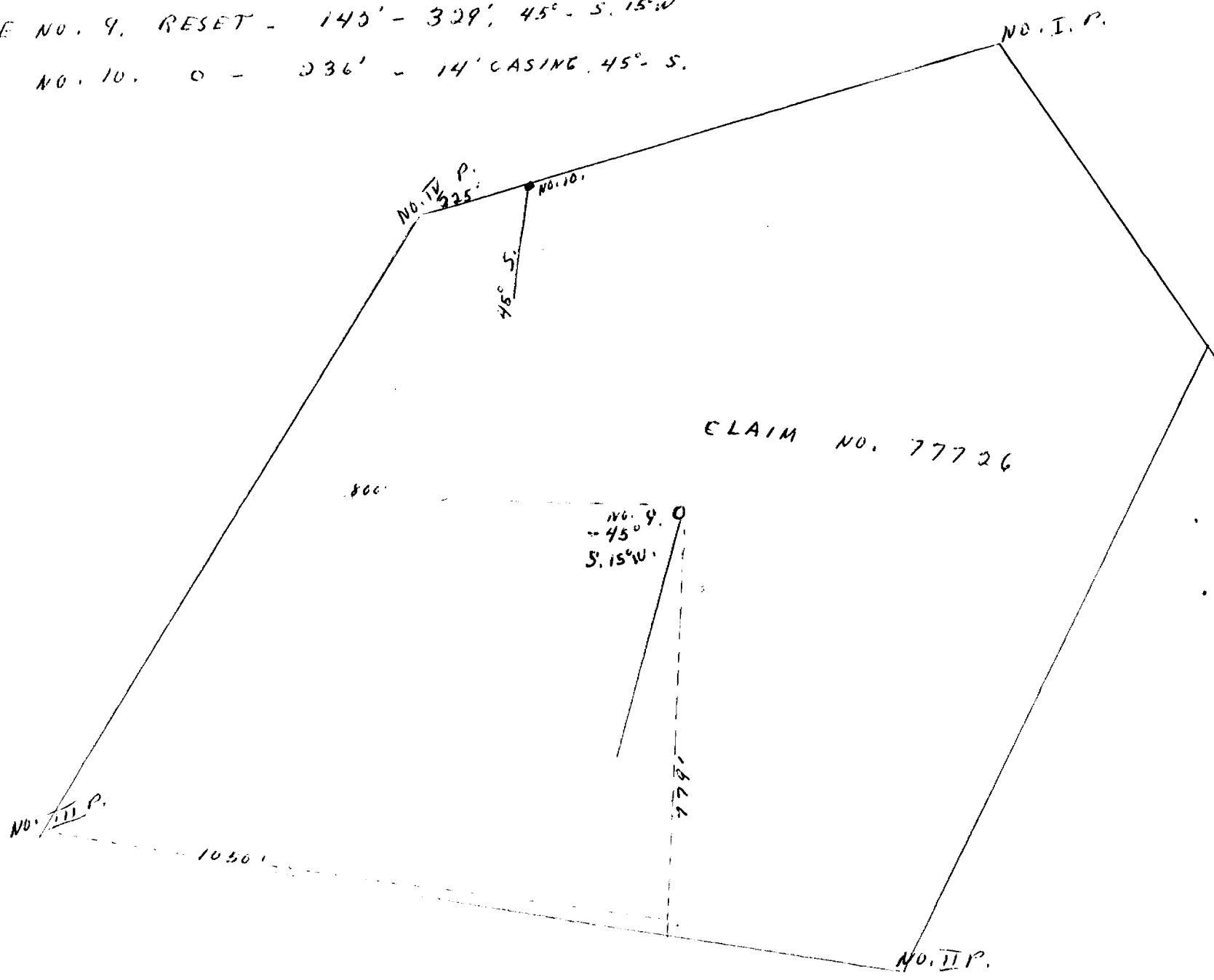
10 Sc. x S.

*logged by P. J. Mearns BSc
April 2, 1968.*

THIN SECTION @ _____

HOLE NO. 9. RESET - 143' - 329', 45° - S. 15° W

HOLE NO. 10. O - 236' - 14' CASING, 45° - S.



GAUTHIER TOWNSHIP

HOLE NO. 9

CORE LOG

CAUTHIER TWP.

"RESET"

142' - 154'-6"	CARBONATE TUFF, WITH A FEW QUARTZ STRINGERS
154'-6" - 169'	BROKEN UP RHYOLITE, MINERALIZED, VISIBLE IRON, COPPER & COBALT
169' - 194'	MOSTLY RHYOLITE, SOME WHITE IRON, A FEW QUARTZ STRINGERS.
194' - 202'	CARBONATE TUFF WITH A LITTLE IRON, SOME QUARTZ STRINGERS
202' - 219'	RHYOLITE, MINERALIZED, WITH IRON, COPPER AND COBALT VISIBLE,
219' - 244'	RHYOLITE, QUARTZ STRINGERS, MINERALIZED, IRON, COPPER, COBALT, AND TRACES OF OTHER MINERALS.
244' - 263'	MINERALIZED, RHYOLITE, BROKEN GROUND
263' - 287'	" " " "
287' - 312'	SOFT HIGHLY SCHISTED ROCK, WITH SOME MINERALIZED QUARTZ STRINGERS. RHYOLITE & CARBONATE TUFF.
312' - 329'	BROKEN UP GROUND, SOME QUARTZ, LITTLE MINERAL.

HOLE NOT FINISHED, DRILL STILL SET UP ON HOLE.

Thomas C. Taylor

HOLE NO 110

CORE LOG

CAUTHIER TWP.

0' - 14'	CASING.
14' - 50' 6"	CARBONATE TUFF, SOME RUSTY SEAMS, NOT MUCH MINERAL, MUD SEAM AT 33'.
50' 6" - 90'	CARBONATE TUFF, A FEW RUSTY SEAMS, VERY LITTLE MINERAL ALTERED WITH MUD SEAMS AT 63' 6", VERY SOFT GROUND.
90' - 115'	MINERALIZED RHYOLITE, SOME VISABLE IRON, COPPER & COBALT.
115' - 137'	RHYOLITE, LITTLE MINERAL, SOME IRON & COPPER, RUSTY SEAMS.
137' - 140'	SCHISTED ROCK, SOME BROKEN GROUND, SOME RHYOLITE FORMATION WITH A LITTLE IRON.
140' - 165'	RHYOLITE, MINERALIZED, IN PLACES QUITE MASSIVE.
165' - 193'	MOSTLY RHYOLITE, QUARTZ STRINGERS, QUITE BARREN, VERY LITTLE MINERAL.
193' - 221'	RHYOLITE, VERY LITTLE MINERAL, SOME IRON, A FEW QUARTZ STRINGERS.
22' - 236'	RHYOLITE, VERY BARREN.

HOLE FINISHED AT 236'

Thomas C. Taylor