

DIAMOND DRILLING



32D04NW0246 27 LEBEL

010

TOWNSHIP: Lebel

REPORT No.: 27

WORK PERFORMED BY: Lampe Resources Co. Ltd.

<u>CLAIM No.</u>	<u>HOLE No.</u>	<u>FOOTAGE</u>	<u>DATE</u>	<u>NOTE</u>
L 531765	KK-82-2	587.0	Aug/82	(1)

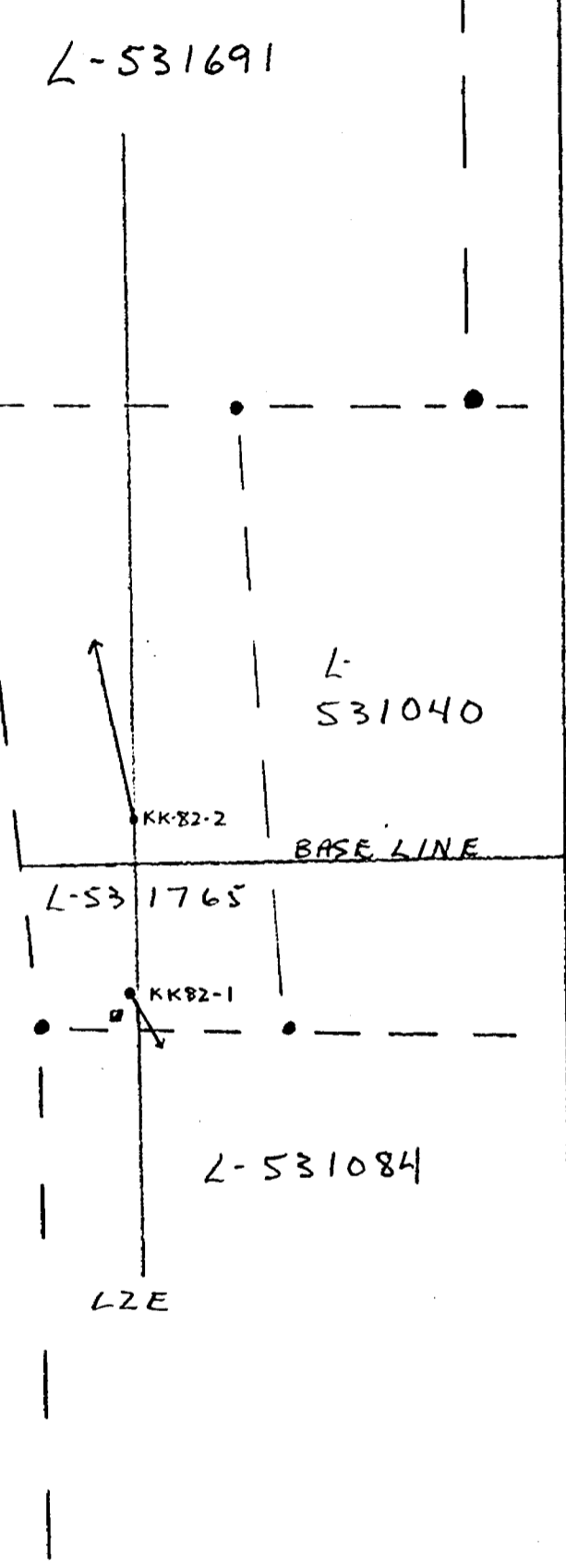
NOTES: (1) #327-82

DIAMOND DRILL HOLE KK82-1,2

1" = 400'

LEBEL TOWNSHIP

LAMPE RESOURCE CO. LTD.



Michael Leahy 08/07/82, 30/09/82

Drilling Company Lampe Resource Co. Ltd.		Collar Elevation	Bearing of hole from true North N 10° W	Total Footage 587	Dip of Hole at Collar 50	Location of hole in relation to a fixed point on the claim. L2E+90N	Map Reference No. L-531765
Date Hole Started Aug 15, 1982	Date Completed Sept 29, 1982	Date Logged Sept 29/82	Logged by Michael LEAHY			CORE SIZE - BQ	Location (Twp., Lot, Con. or Lat. and Long.) LEBEL TOWNSHIP.
Exploration Co., Owner or Optionee Lampe Resource Co. Ltd.		Date Submitted Sept 30/82	Submitted by (Signature) Michael Leahy		Dip of Hole at 587 Ft. 50		

Footage From	Footage To	Rock Type	Description Colour, grain size, texture, minerals, alteration, etc.	Planar Feature Angle *	Core Specimen Footage †	Your Sample No.	Sample Footage From	Sample Footage To	Sample Length	Assays †
0	3	CASING								
3	22.8	SEDIMENT	gray, med. grained, porphyritized with Alk. Fe phenocrysts to 5mm, pyritized up to 4% with fine cubes, blebs + stringers, minor sericite, few quartz-carbonate stringers.							
22.8	24.5	SEDIMENT	gray, fine grained, chlorite spots to 8mm, 2% fine gr. py.							
24.5	39	"	gray, med. gr., porphyritized, few narrow quartz-carb. stringers, fine grained disseminated pyrite up to 4%.							
39	41	"	gray-green, med. to fine grained porphyritized, with numerous quartz-carb stringers to 15mm, 3-4% fine gr. py.							
41	47	"	gray, med. to fine grained, porphyritized, a few quartz-carb. stringers to 5mm, 3-4% fine gr. py.							
47	60	"	gray-green, med. to fine grained, slightly porphyritized in places, brecciated with chlorite seams, minor sericite, 3-5% fine grained pyrite.							
60	110	"	gray, medium grained, porphyritized, a few quartz-carbonate stringers up to 10mm, minor sericite, 3-4% fine grained pyrite.							
110	125	"	gray-green, less porphyritized, med. to fine grained, few quartz-carb. stringers to 10mm, minor sericite, 3-4% fine-grained pyrite.							
125	150	"	gray-green, less porphyritized, medium to fine grained, numerous quartz carb. stringers to 50mm, well fractured in places, sericitized, 2-3% fine grained pyrite.							
150	156.5	"	green-gray, fine grained, minor sericite + fuchsite, 2% fine grained pyrite.							
156	256.5	"	gray, medium to fine grained, porphyritized in places, chlorite on slips, a few narrow quartz-carb. stringers, 1-2% fine gr. py.							
256.5	265	"	gray, medium to fine grained, porphyritized in places, numerous quartz carb stringers, minor post-quartz faulting.							

Drilling Company Lampe Resource Co. Ltd.		Collar Elevation	Bearing of hole from true North N10°W	Total Footage 587	Dip of Hole at Collar 50	Location of hole in relation to a fixed point on the claim. L2E+90N	Map Reference No.	Claim No. L-531765
Date Hole Started Aug 15, 1982	Date Completed Sept 29, 1982	Date Logged Sept 29/82	Logged by Michael LEAHY				Location (Twp., Lot, Con. or Lat. and Long.) LEBEL Twp.	
Operator Co., Owner or Optionee LAMPE RESOURCE Co. Ltd.		Date Submitted Sept 30/82	Submitted by (Signature) Michael Leahy				Property Name King Kirkland	

Footage From	Footage To	Rock Type	Description Colour, grain size, texture, minerals, alteration, etc.	Planar Faulture Angle *	Core Specimen Footage †	Your Sample No.	Sample Footage		Sample Length	Assays †
							From	To		
265	325	SEDIMENT	gray, medium grained with a few fine grained sections, very few narrow quartz-carb. stringers 1-2% fine disseminated pyrite, sericite on slips, chlorite spots in fine grained sections							
325	400	"	lighter gray, finer grained, a few narrow quartz-carb. stringers, slightly porphyritized, 1-2% fine grained pyrite.							
400	417.5	"	lighter gray, finer grained, less porphyritized, a few narrow quartz-carb. veins, 2-3% fine grained pyrite							
417.5	421.5	"	light gray, fine grained, brecciated with numerous quartz-carbonate stringers, sericite, chlorite, fine grained pyrite to 7%.							
421.5	429	"	gray, fine grained, slightly porphyritized, 3-5% fine grained py.							
429	431	"	gray-green, fine grained, sericite, chlorite, fuchsite, quartz-carb. stringers to 20 mm, 5% py							
431	587	"	light to dark gray, medium to fine grained, porphyritized in places, a few quartz-carb. stringers to 20 mm 1-3% fine grained py. minor sericite.							
			END OF HOLE.							