



32D04NW0260 2.3646 LEBEL

LAMPE RESOURCE CO

010

REPORT ON
TRENCHING AND SAMPLING PROGRAM
LEBEL TOWNSHIP , ONTARIO

In November, 1980 a program of trenching and sampling was done on an 11 claim group in Lebel township. The property consists of parts of the Lebel Oro and King Kirkland properties.

A back hoe owned and operated by Louis Metson of Tarzwell, Ont. was used to excavate trenches at several locations within the group.

Samples were taken by M. Leahy at each of the sites. Both freshly broken rock and muck from the old trenches were assayed for gold.

Location of samples are as follows:

✓ Samples KK-1 to KK-14 incl. were taken from the shaft vein on claim # L-531765 west of the shaft.

Samples KK-15 to KK-19 incl. were taken from a trench parallel to and north of the shaft vein on claim # L-531765.

Sample KK-20 was taken from the waste dump adjacent to the shaft on claim # 531765.

Samples KK-21, KK-22 were taken from the small trench 90 feet north of the shaft on claim # 531765.

Samples KK-23 to KK-25 incl. were taken from muck beside the shaft vein west of the shaft on claim # 531765.

Samples KK-26 to KK-28 incl. were taken from the trench beside the road on claim # L-531084.

✓ Samples KK-29 to KK-32 incl. were taken from the trench beside the road south of King Lake on claim # L-531083.

✓ Samples KK-33 to KK-37 incl. were taken from the Lebel Oro shaft area on claim # L-531691.

Samples KK-38 to KK-43 were taken from the trench east of the shaft on claim # L-531765.

The best values were found in quartz-calcite veins in the King Kirkland shaft area.

Geology in the King Kirkland shaft area according to A. MacLean, 1950 should be a porphyrite but the shaft vein is in a strongly altered zone within the porphyrite. This zone was observed to be 90 feet wide north from the shaft and strikes roughly parallel to the shaft vein. Identical material was encountered in the trench south of King Lake approximately 1,000 feet to the west. In hand specimen this rock type appears quite similar to parts of the main Larder Break in that it is carbonated, pyritized and contains enough chrome mica to give the rock a green color. Further study will be required to more accurately identify this rock type and it's relationship to the surrounding geology. The 1981 exploration program will include geophysical surveys, geological mapping and diamond drilling.

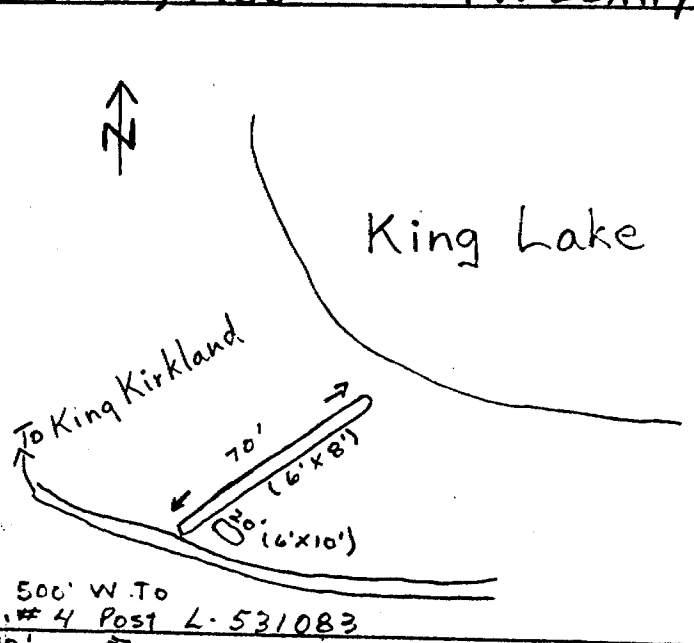
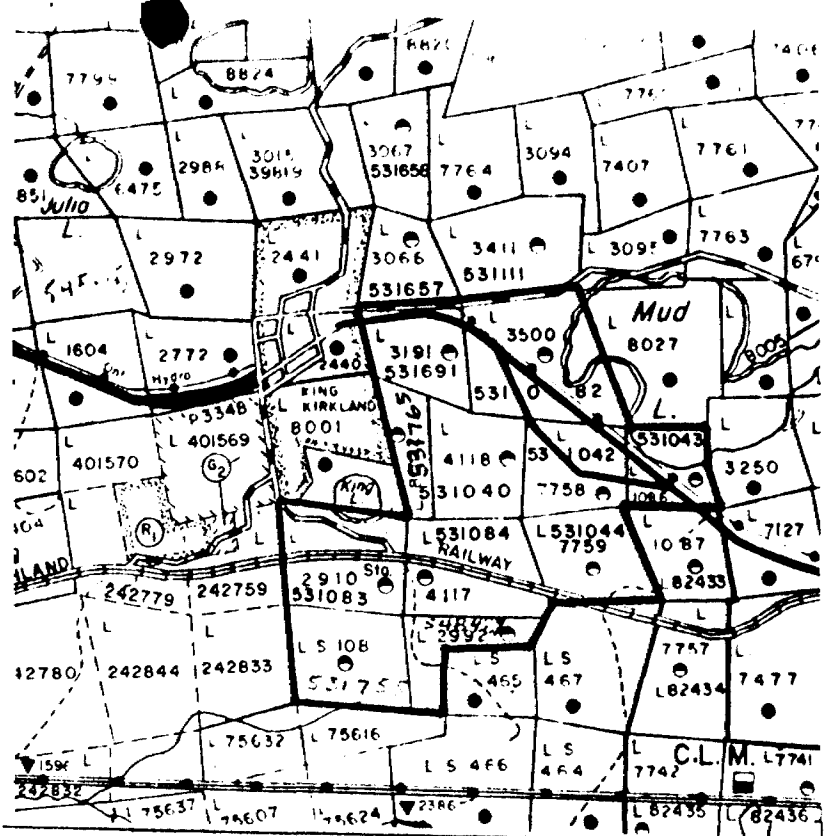
M. Leahy December, 1980

Michael Leahy

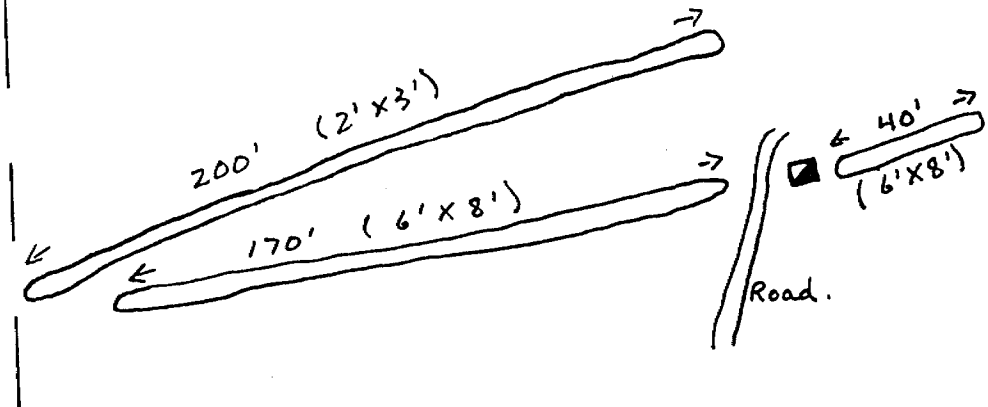
Key Map - 1" = 1/2 mile
 LEBEL Township.

Lampe Resource Co. Limited
 Lebel Tp. Property
 Trenching Plan
 1" = 50'

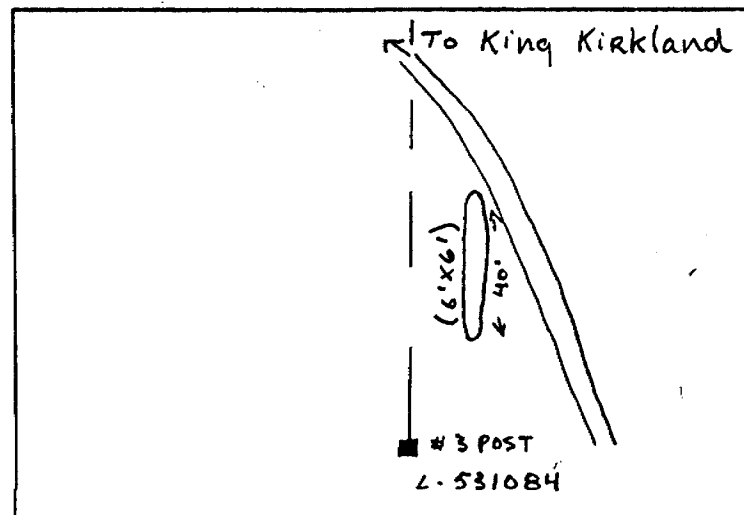
DEC, 1980 M. LEAHY



500' W. To # 4 Post L-531083
 (3'x3') SHAFT AREA



#3 Post L-531765



#3 Post L-531084



SWASTIKA LABORATORIES LIMITED

P.O. BOX 10, SWASTIKA, ONTARIO P0K 1T0

TELEPHONE: (705) 642-3244

ANALYTICAL CHEMISTS • ASSAYERS • CONSULTANTS

Certificate of Analysis

Certificate No. 50587

Date: Nov.25, 1980

Received Nov.19, 1980 14 Samples of ore

Submitted by Mike Leahy, Kirkland Lake, Ontario

SAMPLE NO.	GOLD Oz./ton
KK-1	0.005
2	0.01
3	0.01
4	0.01
5	0.13
6	0.002
7	0.005
8	0.005
9	0.005
10	0.002
11	0.002
12	0.002
13	0.002
14	0.002

Per G. Lebel
G. Lebel, Manager

ESTABLISHED 1928





SWASTIKA LABORATORIES LIMITED

P.O. BOX 10, SWASTIKA, ONTARIO P0K 1T0
TELEPHONE: (705) 642-3244
ANALYTICAL CHEMISTS • ASSAYERS • CONSULTANTS

Certificate of Analysis

Certificate No. 50622

Date: Nov. 28, 1980

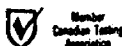
Received Nov. 25, 1980 23 Samples of ore

Submitted by Mr. M. Leahy, Kirkland Lake, Ontario

SAMPLE NO.	GOLD Oz./ton
KK-15	0.005
16	0.005
17	0.005
18	0.002
19	0.005
20	0.002
21	0.002
22	0.002
23	0.005
24	0.002
25	0.002
26	NIL
27	NIL
28	NIL
29	0.02
30	0.01
31	0.002
32	0.002
33	0.002
34	0.005
35	NIL
36	0.002
37	0.002

Per G. Lebel
G. Lebel, Manager

ESTABLISHED 1928





SWASTIKA LABORATORIES LIMITED

P.O. BOX 10, SWASTIKA, ONTARIO P0K 1T0
TELEPHONE: (705) 642-3244
ANALYTICAL CHEMISTS • ASSAYERS • CONSULTANTS

Certificate of Analysis

Certificate No. 50679


Date: Dec. 12, 1980

Received Dec. 5, 1980 6 Samples of ore

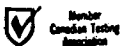
Submitted by Mr. M. Leahy, Kirkland Lake, Ontario

SAMPLE NO.	GOLD Oz./ton
KK-38	0.005
KK-39	0.005
KK-40	0.002
KK-41	0.68
KK-42	0.005
KK-43	0.17

Per


G. Lebel, Manager

ESTABLISHED 1928





SWASTIKA LABORATORIES LIMITED

P.O. BOX 10, SWASTIKA, ONTARIO P0K 1T0

TELEPHONE: (705) 642-3244

ANALYTICAL CHEMISTS • ASSAYERS • CONSULTANTS

Certificate of Analysis

Certificate No. 50955

Date: February 27 1981

Received _____ 2 Samples of Pulp from previous assay

Submitted by Lampe Resources Ltd., Kirkland Lake, Ontario Per: M. Leahy

SAMPLE NO.	SILVER Oz./ton
KK-41	0.18
KK-43	0.03

Per *G. Lebel*
G. Lebel - Manager

ESTABLISHED 1928



SWASTIKA LABORATORIES LIMITED

P.O. BOX 10, SWASTIKA, ONTARIO P0K 1T0

TELEPHONE: (705) 642-3244

ANALYTICAL CHEMISTS • ASSAYERS • CONSULTANTS

Certificate of Analysis

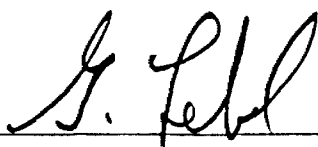
Certificate No. 51067

Date: March 18, 1981

Received _____ 1 Samples of pulp from previous assay

Submitted by Mr. M. Leahy, Kirkland Lake, Ontario

SAMPLE NO.	SILVER Oz./ton
KK-38	0.02

Per 

G. Lebel, Manager

ESTABLISHED 1928

LAMPE
RESOURCE CO. LTD.

TRENCHING + SAMPLING

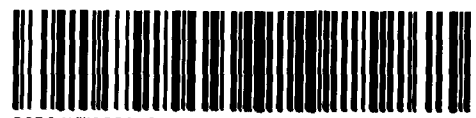
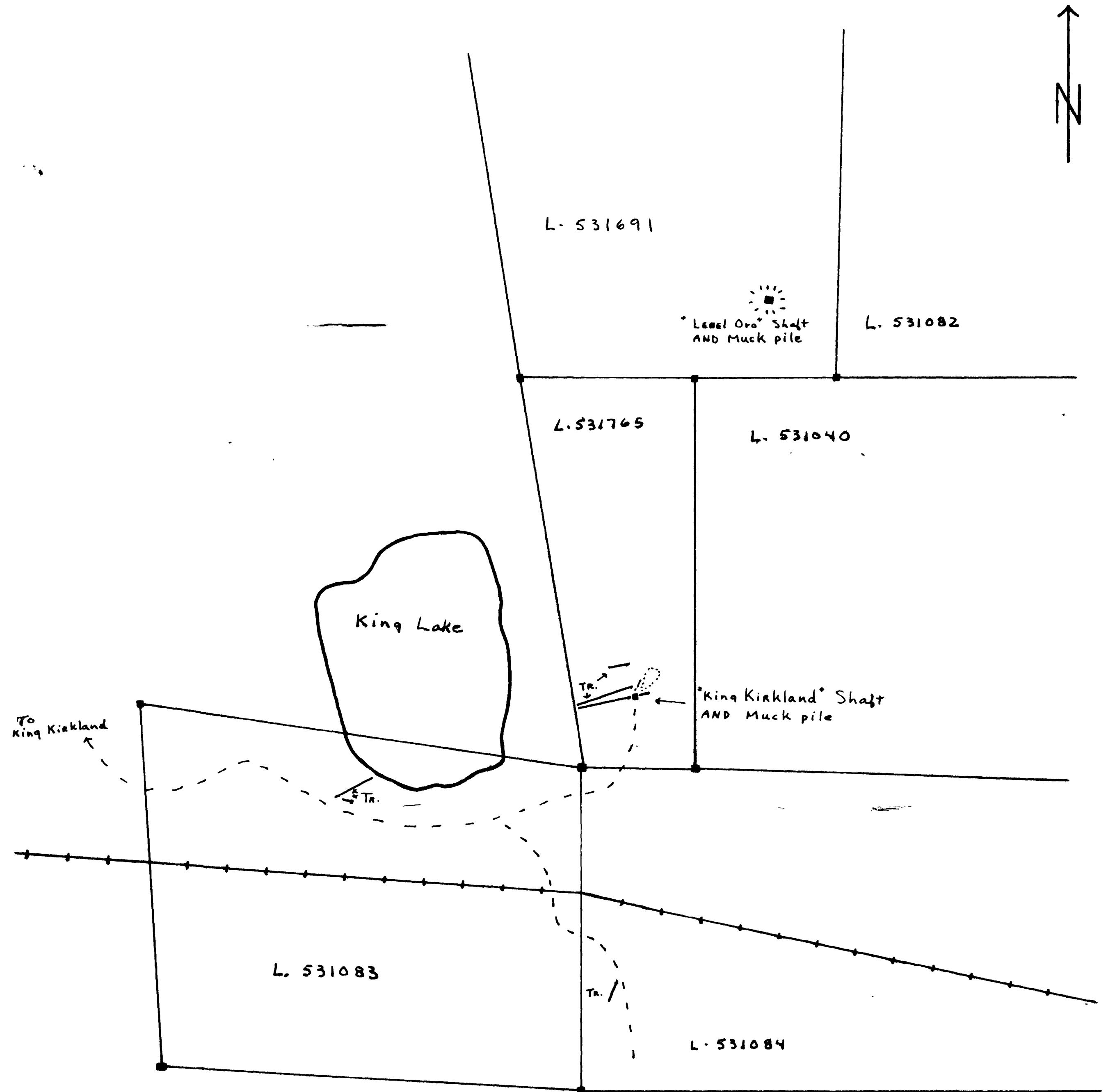
LEBEL TP.

SCALE - 1" = 300'

Trench - Tr.

FOR DETAIL See Report (DEC. 1980)

M. LEAHY MARCH, 1981



32084NW6288 2.3846 LEBEL