

*Morrissette
Tehel claims
to south of No 1 showing*

LABORATORY AND RESEARCH BRANCH
DEPARTMENT OF MINES AND NORTHERN AFFAIRS
77 GRENVILLE STREET, 11th FLOOR
TORONTO 181, ONTARIO



32004NW0285 2.1627 MORRISSETTE

010

B 10339

LABORATORY REPORT

DATE October 20, 1972

Telephone: 365-1337

Issued To: Emil Chorzepa, 22A, McCamus Ave., Kirkland Lake, Ontario

SAMPLE NUMBER	GOLD OZ. PER TON	GOLD VALUE PER TON	SILVER OZ. PER TON	
#1	Trace			

Fees Received
1 coupon
Card # 2135

\$ 3.50 as per schedule of fees

D.A. Moddle

(D.A. Moddle, P. Eng.)
DIRECTOR

Except by special permission, reproduction of these results must include any qualifying remarks made by this department with reference to any sample.

Morissette No 2 showing

LABORATORY AND RESEARCH BRANCH
DEPARTMENT OF MINES AND NORTHERN AFFAIRS
77 GRENVILLE STREET, 11th FLOOR
TORONTO 181, ONTARIO



REPORT NUMBER

B 10379

LABORATORY REPORT

DATE *Nov. 16/72*

Telephone: 365-1337

Issued To: Emil Chorzepa, 22a McCamus Avenue, Kirkland Lake, Ontario

SAMPLE NUMBER	GOLD OZ. PER TON	GOLD VALUE PER TON	SILVER OZ. PER TON
#1	Nil		
#2	Nil		
<i>Morissette</i> #3	Trace		
" #4	Trace		

Fees Received

4 Coupons
Card #2135

\$14.00 as per schedule of fees

D.A. Moddle
(D.A. Moddle, P. Eng.)

DIRECTOR

Except by special permission, reproduction of these results must include any qualifying remarks made by this department with reference to any sample.

missile slugger work

LABORATORY AND RESEARCH BRANCH
DEPARTMENT OF MINES AND NORTHERN AFFAIRS
77 GRENVILLE STREET, 11th FLOOR
TORONTO 181, ONTARIO



REPORT NUMBER

B 10418

LABORATORY REPORT

DATE *Jan. 15, 1973*

Telephone: 365-1337

Issued To: *Emil Chorzepa, Box 428, Kirkland Lake, Ontario*

SAMPLE NUMBER	GOLD OZ. PER TON	GOLD VALUE PER TON	SILVER OZ. PER TON	
		<i>Valued @ \$35. per oz.</i>		
<i>(1)</i> #1	Trace		Trace	<i>sulphides (assorted)</i>
<i>(2)</i> #2	0.01	\$0.35	Trace	<i>chalcocite in calcite (selected)</i>

Fees Received

4 Coupons
Card #2304

\$14.00 as per schedule of fees

D.A. Moddle (D.A. Moddle, P. Eng.)
DIRECTOR

Except by special permission, reproduction of these results must include any qualifying remarks made by this department with reference to any sample.



LABORATORY REPORT
 MINISTRY OF NATURAL RESOURCES
 MINERAL RESEARCH BRANCH
 77 GRENVILLE STREET, 11TH FLOOR
 TORONTO 181, ONTARIO
 TELEPHONE: 965-1337

REPORT NUMBER

B 10632

DATE August 14, 1973

Issued To: Emil Chorzepa, Box 428, Kirkland Lake, Ontario

SAMPLE NUMBER	GOLD OZ. PER TON	GOLD VALUE PER TON	SILVER OZ. PER TON
(4) #3	Trace		
(5) #4	Trace		
(6) #5	Trace		
(7) #6	Trace		
(8) #7	Trace		
(9) #8	0.01		

*
*
2 1.00
3.50
3.50
3.50
1 4.00
1 4.00
3.50
6 3.00
6 0 4.00
6 6 7.00*

*Shear zone running N. 135° W 1000' E of ob. & boundary
 & containing sulphides & rust*

Fees Received

6 Coupons
 Card #2304

\$ 21.00 as per schedule of fees

D.A. Moddle
 (D.A. Moddle, P. Eng.)

DIRECTOR



LABORATORY REPORT
 MINISTRY OF NATURAL RESOURCES
 MINERAL RESEARCH BRANCH
 77 GRENVILLE STREET, 11TH FLOOR
 TORONTO 181, ONTARIO
 TELEPHONE: 965-1337

REPORT NUMBER

B 10550

DATE June 7, 1973

Emil Chorzepa, Box 428, Kirkland Lake, Ontario P2N 3J1

Issued To:

SAMPLE NUMBER	GOLD OZ. PER TON	GOLD VALUE PER TON	SILVER OZ. PER TON	Remarks
#1	Trace			Sulphides next to .05 oz

Fees Received

1 Coupon
 Card #2304

\$3.50 as per schedule of fees

D.A. Moddle

(D.A. Moddle, P. Eng.)
 DIRECTOR



LABORATORY REPORT
 MINISTRY OF NATURAL RESOURCES
 MINERAL RESEARCH BRANCH
 77 GRENVILLE STREET, 11TH FLOOR
 TORONTO 181, ONTARIO
 TELEPHONE: 965-1337

REPORT NUMBER

B 10506

DATE May 2, 1973

Emil Chorzepa, Box 428, Kirkland Lake, Ontario

Issued To:

SAMPLE NUMBER	GOLD OZ. PER TON	GOLD VALUE PER TON	SILVER OZ. PER TON
(3) #CR Rusty - carbonated Quartz - Feldspar Porphyry behind camp.	0.01	Valued @ \$35. per oz. \$0.35	

Fees Received

1 Coupon
 Card #2304

\$3.50 as per schedule of fees

(D.A. Moddle, P. Eng.)

DIRECTOR



LABORATORY REPORT
MINISTRY OF NATURAL RESOURCES
MINERAL RESEARCH BRANCH
77 GRENVILLE STREET, 11TH FLOOR
TORONTO 181, ONTARIO
TELEPHONE: 965-1337

REPORT NUMBER

B 10502

DATE April 27, 1973

Issued To: Emil Chorzepa, Box 428, Kirkland Lake, Ontario

SAMPLE NUMBER	GOLD OZ. PER TON	GOLD VALUE PER TON	SILVER OZ. PER TON	
#Q	Trace			

Fees Received

1 Coupon
Card #2304

\$ 3.50 as per schedule of fees

(D.A. Moddle, P. Eng.)
DIRECTOR

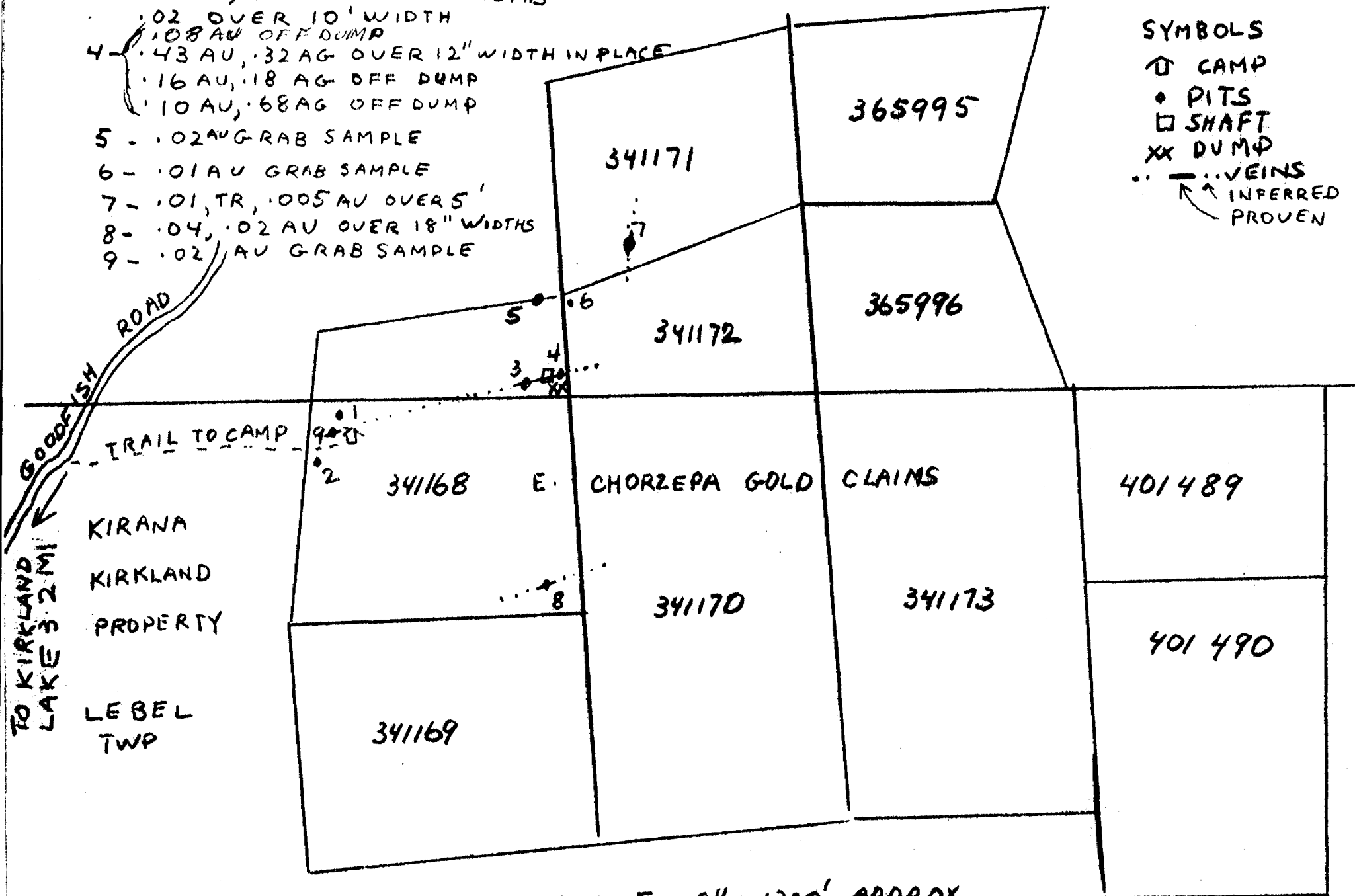
VALUES OBTAINED IN POSITION NO. 1, 2 ETC.

- 1 - .02 AU OVER 12" WIDTHS
- 2 - .05 AND .01 AU GRAB SAMPLES
- 3 - .06 AU, .32 AG OVER 12" WIDTHS
.02 OVER 10' WIDTH
- 4 - .08 AU OFF DUMP
.43 AU, .32 AG OVER 12" WIDTH IN PLACE
.16 AU, .18 AG OFF DUMP
.10 AU, .68 AG OFF DUMP
- 5 - .02 AU GRAB SAMPLE
- 6 - .01 AU GRAB SAMPLE
- 7 - .01, TR, .005 AU OVER 5'
- 8 - .04, .02 AU OVER 18" WIDTHS
- 9 - .02 AU GRAB SAMPLE



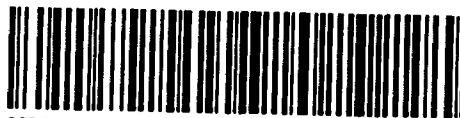
MORRISETTE
TWP.

- SYMBOLS
- ↑ CAMP
 - PITS
 - SHAFT
 - XX DUMP
 - VEINS
 - ↗ INFERRED
 - ↘ PROVEN



SCALE 2" = 1320' APPROX

Recorded Holder	<u>Emil Chorzepa</u>
Township or Area	<u>Lebel Township</u>



900

Type of survey and number of Assessment days credit per claim	ASSAYING
<p>Geophysical</p> <p>Electromagnetic _____ days</p> <p>Magnetometer _____ days</p> <p>Radiometric _____ days</p> <p>Induced polarization _____ days</p> <p>Section 86 (18) <u>see across</u> days</p> <p>Geological _____ days</p> <p>Geochemical _____ days</p> <p>Man days <input type="checkbox"/> Airborne <input type="checkbox"/></p> <p>Special provision <input type="checkbox"/> Ground <input checked="" type="checkbox"/></p>	<p><u>Trench, Pit and Shaft Sampling</u></p> <p>154 Samples collected from Mining Claims L. 341168 - 71 and 72</p> <p>Amount expended on assaying samples = \$667.00</p> <p>Total assessment days credit allowed = 44</p> <p>Mining Claims L. 341168 - 71 and 72 may be grouped under Section 85 (6) for the purposes of recording the work credits of <u>44 days</u>.</p>
<p>Notice of Intent to be issued:</p> <p><input type="checkbox"/> Credits have been reduced because of partial coverage of claims.</p> <p><input type="checkbox"/> Credits have been reduced because of corrections to work dates and figures of applicant.</p> <p><input type="checkbox"/> No credits have been allowed for the following mining claims as they were not sufficiently covered by the survey:</p> <p>_____</p> <p>_____</p> <p>_____</p> <p>_____</p> <p>_____</p>	<p><i>Les Benis</i></p> <p>Approved</p> <p>April 15, 1975</p>

The Mining Recorder may reduce the above credits if necessary in order that the total number of approved assessment days recorded on each claim does not exceed the maximum allowed as follows: Geophysical — 80; Geological — 40; Geochemical — 40;

Morrisette Tp. (M.374)

THE TOWNSHIP
OF **2.1627**
LEBEL

DISTRICT OF
TIMISKAMING

LARDER LAKE
MINING DIVISION

SCALE: 1-INCH = 40 CHAINS

LEGEND

- PATENTED LAND ● or ⊕
- CROWN LAND SALE C.S.
- LEASES ⊙
- LOCATED LAND Loc.
- LICENSE OF OCCUPATION L.O.
- MINING RIGHTS ONLY M.R.O.
- SURFACE RIGHTS ONLY S.R.O.
- ROADS —
- IMPROVED ROADS —
- KING'S HIGHWAYS —
- RAILWAYS —
- POWER LINES —
- MARSH OR MUSKEG —
- MINES ⋈
- CANCELLED C.
- PATENTED FOR SURFACE RIGHTS ONLY ⊙

NOTES

400' surface rights reservation along the shores of all lakes and rivers.

For status of summer resort locations shown thus; refer to departmental files.

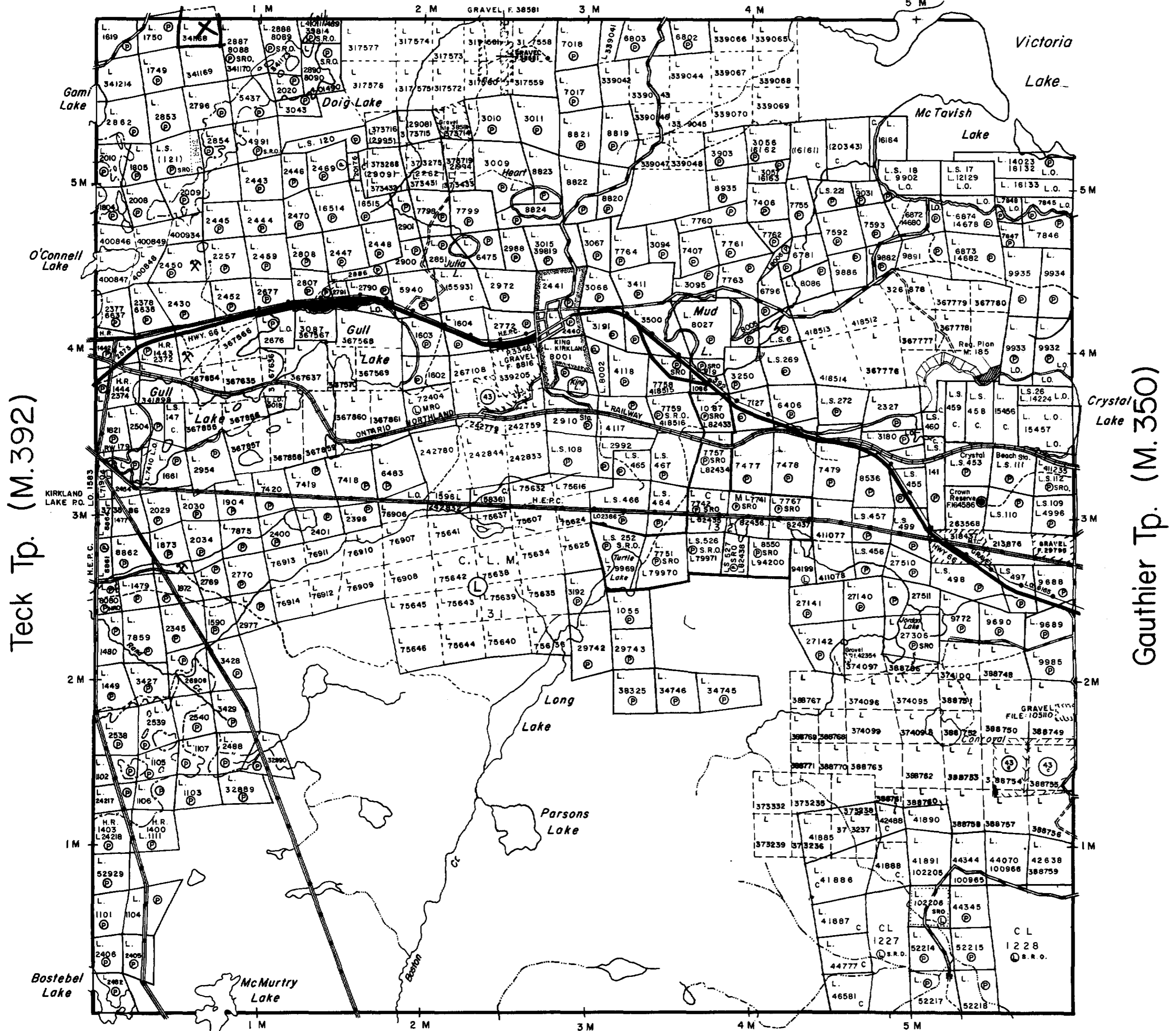
Areas withdrawn from staking under Section 43 of the Mining Act. (R.S.O. 1970.)

Order No.	File	Date	Disposition
	Ⓢ 165484	20 Nov 69	S. R. O.
	Ⓢ 165484	25 Jun '71	S. R. O.
W.4/74	Ⓢ 108382	5/2/74	S. R. O.
W.53/73	Ⓢ 105110	27/11/73	S. R. O.

MINING LANDS
DATE OF ISSUE
NOV 20 1974
MINISTRY OF NATURAL RESOURCES

PLAN NO. **M.359**

ONTARIO
MINISTRY OF NATURAL RESOURCES
SURVEYS AND MAPPING BRANCH



Teck Tp. (M.392)

Gauthier Tp. (M.350)

Boston Tp. (M.332)



Bisley Twp. (M. 328)

THE TOWNSHIP OF
MORRISETTE

DISTRICT OF
TIMISKAMING

LARDER LAKE
MINING DIVISION

SCALE: 1-INCH = 40 CHAINS

LEGEND

- PATENTED LAND
- CROWN LAND SALE
- LEASES
- LOCATED LAND
- LICENSE OF OCCUPATION
- MINING RIGHTS ONLY
- SURFACE RIGHTS ONLY
- ROADS
- IMPROVED ROADS
- KING'S HIGHWAYS
- RAILWAYS
- POWER LINES
- MARSH OR MUSKEG
- MINES
- CANCELLED

NOTES

400' SURFACE RIGHTS RESERVATION AROUND ALL LAKES AND RIVERS

SURFACE RIGHTS ON MINING CLAIM L 10772 TEMPORARILY WITHDRAWN FILE 13155

Mining Claims within area show they are subject to rights and privileges granted by Mining Court Order 2280 April 1, 1966 File No. 19697

Areas withdrawn from staking under Section 43 of the Mining Act (R.S.O. 1970)

Order No.	File	Date	Disposition
43	W 22	180705	26/4/74 surface rights

MINING LANDS
DATE OF ISSUE
JAN 23 1976
MINISTRY
OF NATURAL RESOURCES

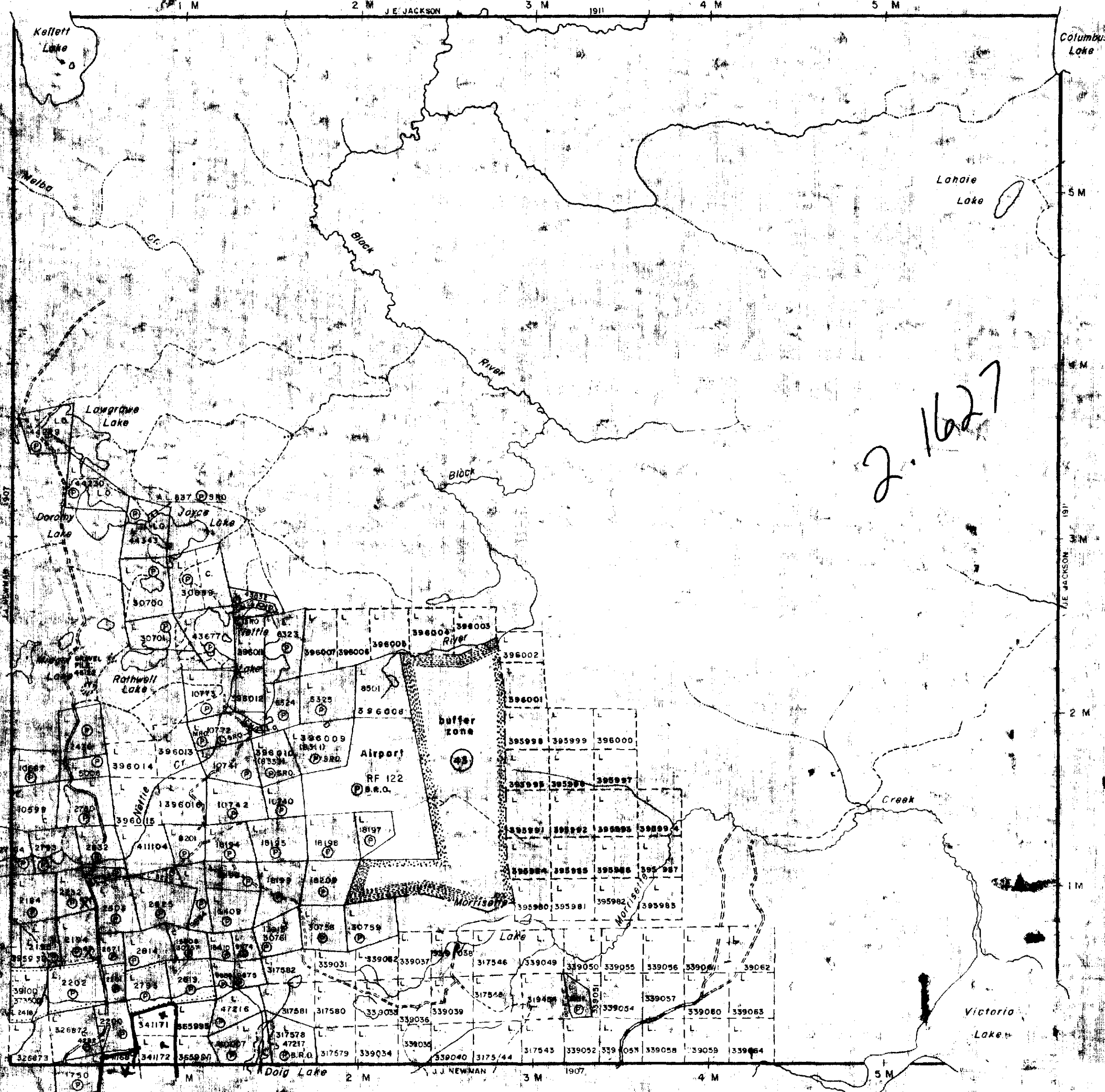
PLAN NO. M. 374

ONTARIO
MINISTRY OF NATURAL RESOURCES
SURVEYS AND MAPPING BRANCH

Bernhardt Twp. (M. 327)

Arnold Twp. (M. 321)

2.1627



Lebel Twp. (M. 359)



CLAIM 341171

SCALE 1" = 100' APPROX.

CLAIM 341172

CLAIM 341170

CLAIM 341168

CLAIM 341169

MORRISETTE TWP

LEBEL TWP.

TWP LINE

TO HANNAH LAKE
3.5 MI

TO CAMP
1700'

SAMPLE NO.	TYPE SAMPLE	ROCK TYPE ETC.	ASSAY RESULTS
9	CHIP 12"	CARBONATED QTZ PORPHYRY	TRACE AU
10	GRAB	SERIALIZED QTZ PORPHYRY	TRACE AU
11	GRAB	"	TRACE AU
12	GRAB	QUARTZ PORPHYRY SULPHIDES	NIL AU
13	CHIP 12"	SHEARED QTZ PORPHYRY S.	TRACE AU
14	CHIP 12"	QTZ PORPHYRY & SULPHIDES	0.02 AU
15	CHIP 12"	"	TRACE AU
16	CHIP 12"	"	0.015 AU
17	CHIP 12"	"	NIL AU
18	CHIP 12"	"	TRACE AU
19	CHIP 24"	SHEARED LAVA CALCITE STR.	TRACE AU
20	CHIP 24"	"	TRACE AU
21	CHIP 24"	"	TRACE AU
22	CHIP 24"	"	TRACE AU
23	CHIP 24"	CONTACT QTZ PORPHYRY	NIL AU
24	CHIP 12"	QUARTZ PORPHYRY CALCITE	TRACE AU
25	GRAB	QTZ-CALCITE/EPICLASTIC	0.02 AU
26	GRAB	PYRITE IN CALCITE	TRACE AU
27	CHIP 24"	SHEARED LAVA CALCITE STR.	0.02 AU
28	CHIP 24"	ANGKORALDOLAN/CALCITE/S.	NIL AU
29	CHIP 24"	"	NIL AU
30	CHIP 24"	"	NIL AU
31	CHIP 24"	"	NIL AU
32	CHIP 24"	"	NIL AU
33	CHIP 24"	"	TRACE AU
34	CHIP 24"	SHEARED ANDESITE CALCS	TRACE AU
35	CHIP 24"	"	NIL AU
36	GRAB	QTZ CALCITE MINOR S.	TRACE AU
37	CHIP 12"	QTZ CAL. VEIN 1 FOOT WIDE	TRACE AU
38	CHIP 12"	QTZ PORPHYRY & SULPHIDES	NIL AU
39	CHIP 12"	"	NIL AU
40	CHIP 12"	"	NIL AU
41	CHIP 12"	"	NIL AU
42	CHIP 12"	"	NIL AU
43	CHIP 24"	"	TRACE AU
44	CHIP 24"	"	0.01 AU
45	CHIP 24"	"	NIL AU
46	CHIP 36"	RADIOLACED SHEAR ZONE IN LAVA	0.005 AU
47	CHIP 12"	RUSTY SILICIFIED LAVA/SULPHIDES	TRACE AU
48	CHIP 24"	"	0.01 AU
49	CHIP 12"	QTZ CALCITE VEIN, RUSTY	TRACE AU
50	CHIP 6 FEET	ULCANIC BRECCIA & SILICIFIED	0.005 AU
51	CHIP 30"	ANDESITE & SULPHIDES	TRACE AU
52	CHIP 36"	RUSTY SHEAR LAVA & SULPHIDES	NIL AU
53	CHIP 48"	"	NIL AU
54	CHIP 48"	"	TRACE AU
55	CHIP 30"	"	0.01 AU
56	CHIP 30"	"	TRACE AU
57	GRAB	SULPHIDES IN RUSTY LAVA	0.01 AU
58	CHIP 24"	ULCANIC BRECCIA & SILICIFIED	TRACE AU
59	CHIP 12"	ANDESITE, CALCITE, SPHALERITE	0.01 AU
60	CHIP 24"	"	TRACE AU
61	CHIP 24"	"	0.005 AU
62	4" DRILL CUTTINGS	SHEARED LAVA CALCITES	0.005 AU
63	4" "	"	0.005 AU
64	4" "	"	TRACE AU
65	4" "	"	TRACE AU
66	4" "	"	0.005 AU
67	4" "	"	0.005 AU
68	4" "	"	TRACE AU
69	COMPOSITE CROSS SECTION	"	"
70	CHIP 36"	SHEARED SILICIFIED LAVA	0.005 AU
71	CHIP 18"	SHEARED RED SPOTTED LAVA	TRACE AU
72	CHIP 24"	"	0.02 AU
73	CHIP 36"	SPOTTED SHEAR LAVA & SULPHIDES	TRACE AU
74	CHIP 48"	"	0.01 AU
75	GRAB	RUSTY SHEAR IN LAVA	NIL AU
76	GRAB	"	NIL AU
77	CHIP 24"	SHEARED SPOTTED LAVA TRUST	NIL AU
78	CHIP 36"	"	NIL AU
79	CHIP 36"	"	NIL AU
80	CHIP 36"	"	NIL AU
81	4" DRILL CUTTINGS	"	TRACE AU
82	CHIP 24"	HEAVY SULPHIDES IN SHEARED LAVA	0.04 AU
83	CHIP 48"	"	0.01 AU
84	CHIP 52"	"	TRACE AU
85	CHIP 36"	RUSTY SPOTTED LAVA SHEAR	TRACE AU
86	CHIP 36"	"	TRACE AU
87	CHIP 24"	SILICIFIED ANDESITE/SULPHIDES	NIL AU
88	CHIP 24"	"	NIL AU
89	CHIP 24"	"	NIL AU
90	GRAB	QTZ PORPHYRY & SULPHIDES	NIL AU
91	GRAB	ULCANIC BRECCIA & SULPHIDES	0.02 AU
92	CHIP 12"	QTZ-CALCITE VEIN GREENISH	TRACE AU
93	CHIP 36"	RUSTY SPOTTED LAVA SHEAR	0.01 AU
94	CHIP 12"	SULPHIDES IN QTZ PORPHYRY	0.02 AU
95	CHIP 12"	"	TRACE AU
96	CHIP 12"	"	0.01 AU
97	CHIP 12"	SULPHIDE SHEAR IN LAVA	TRACE AU
98	CHIP 24"	RUSTY LAVA & SULPHIDES	TRACE AU
99	CHIP 24"	"	TRACE AU
100	GRAB	QTZ & SULPHIDES	NIL AU
101	GRAB	"	NIL AU
102	GRAB	SHEARED LAVA & CALCITE RUSTY	NIL AU
103	GRAB	"	TRACE AU
104	CHIP 30"	ULCANIC BRECCIA & SULPHIDES	TRACE AU
105	CHIP 30"	"	TRACE AU
106	CHIP 30"	"	NIL AU
107	CHIP 30"	"	NIL AU

SAMPLE NO.	TYPE SAMPLE	ROCK TYPE ETC.	ASSAY RESULTS
108	CHIP 30"	SHEARED SPOTTED LAVA TRUST	TRACE AU
109	CHIP 30"	"	TRACE AU
110	CHIP 30"	"	TRACE AU
111	CHIP 30"	SILICIFIED LAVA/SULPHIDES	NIL AU
112	CHIP 30"	"	NIL AU
113	CHIP 30"	"	NIL AU
114	CHIP 30"	"	TRACE AU
115	CHIP 30"	"	TRACE AU
116	CHIP 30"	"	NIL AU
117	CHIP 30"	"	TRACE AU
118	CHIP 30"	"	TRACE AU
119	CHIP 30"	"	TRACE AU
120	CHIP 36"	ANDESITE & SULPHIDES	TRACE AU
121	CHIP 36"	"	TRACE AU
122	CHIP 36"	"	NIL AU
123	CHIP 36"	"	NIL AU
124	GRAB	CALCITE VEIN & SULPHIDES	TRACE AU
125	GRAB	"	NIL AU
126	CHIP 24"	QTZ CALCITE VEIN & SULPHIDES	0.01 AU
127	CHIP 24"	"	NIL AU
128	CHIP 24"	ULCANIC BRECCIA & SULPHIDES	TRACE AU
129	CHIP 24"	"	TRACE AU
130	CHIP 24"	"	TRACE AU
131	CHIP 24"	"	TRACE AU
132	COMPOSITE SAMPLE	"	0.16 AU
133	COMPOSITE SAMPLE	"	0.15 AU
134	COMPOSITE SAMPLE	"	0.10 AU
135	CHIP 24"	ULCANIC BRECCIA & SULPHIDES	NIL AU
136	CHIP 12"	CALCITE VEIN & SULPHIDES	0.01 AU
137	CHIP 24"	CALCITE VEIN & SULPHIDES	0.05 AU
138	CHIP 12"	CALCITE VEIN & SULPHIDES	TRACE AU
139	CHIP 12"	SULPHIDES IN LAVA	NIL AU

SAMPLE NO.	TYPE SAMPLE	ROCK TYPE ETC.	ASSAY RESULTS
140	CHIP 30"	SULPHIDES IN LAVA	NIL AU
141	GRAB	SERIALIZED SILICIFIED LAVA	NIL AU
142	GRAB	ANDESITE WITH SULPHIDES	TRACE AU
143	CHIP 24"	ULCANIC BRECCIA/S	TRACE AU
144	CHIP 12"	ULCANIC BRECCIA/S	0.43 AU
145	CHIP 24"	ULCANIC BRECCIA/S	TRACE AU
146	CHIP 12"	CALCITE VEIN & SULPHIDES	0.02 AU
147	CHIP 36"	CARBONATED QTZ PORPHYRY S.	NIL AU
148	"	"	TRACE AU
149	"	"	TRACE AU
150	CHIP 36"	ULCANIC BRECCIA	NIL AU
151	"	"	NIL AU
152	"	"	NIL AU
153	GRAB	QTZ PORPHYRY S.	TRACE AU
154	GRAB	"	TRACE AU
155	GRAB	"	0.05 AU
156	GRAB	STRONGER CALCITE IN FACIES	TRACE AU
157	GRAB	"	TRACE AU
158	GRAB	"	TRACE AU
159	GRAB	"	TRACE AU
160	GRAB	"	TRACE AU
161	GRAB	"	TRACE AU
162	GRAB	"	TRACE AU
163	GRAB	"	TRACE AU
164	GRAB	"	TRACE AU
165	GRAB	"	TRACE AU
166	GRAB	"	TRACE AU
167	GRAB	"	TRACE AU
168	GRAB	"	TRACE AU
169	GRAB	"	TRACE AU
170	GRAB	"	TRACE AU
171	GRAB	"	TRACE AU
172	GRAB	"	TRACE AU
173	GRAB	"	TRACE AU
174	GRAB	"	TRACE AU
175	GRAB	"	TRACE AU
176	GRAB	"	TRACE AU
177	GRAB	"	TRACE AU
178	GRAB	"	TRACE AU
179	GRAB	"	TRACE AU
180	GRAB	"	TRACE AU
181	GRAB	"	TRACE AU
182	GRAB	"	TRACE AU
183	GRAB	"	TRACE AU
184	GRAB	"	TRACE AU
185	GRAB	"	TRACE AU
186	GRAB	"	TRACE AU
187	GRAB	"	TRACE AU
188	GRAB	"	TRACE AU
189	GRAB	"	TRACE AU
190	GRAB	"	TRACE AU
191	GRAB	"	TRACE AU
192	GRAB	"	TRACE AU
193	GRAB	"	TRACE AU
194	GRAB	"	TRACE AU
195	GRAB	"	TRACE AU
196	GRAB	"	TRACE AU
197	GRAB	"	TRACE AU
198	GRAB	"	TRACE AU
199	GRAB	"	TRACE AU
200	GRAB	"	TRACE AU